

AD-A193 248

REAL-TIME SNOW SIMULATION MODEL FOR THE MONONGAHELA
RIVER BASIN(U) HYDROLOGIC ENGINEERING CENTER DAVIS CA
D H HOGGAN ET AL. DEC 87 HEC-TP-118

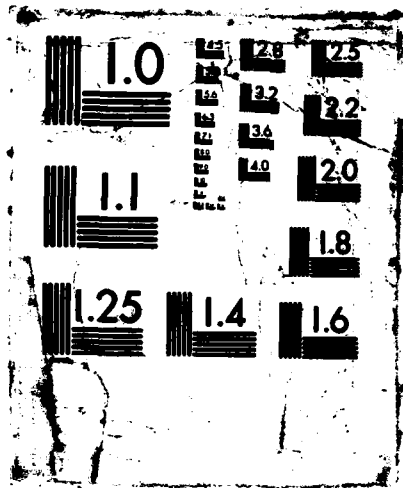
1/1

UNCLASSIFIED

F/G 8/12

NL







**US Army Corps
of Engineers**

**The Hydrologic
Engineering Center**

4

AD-A193 240

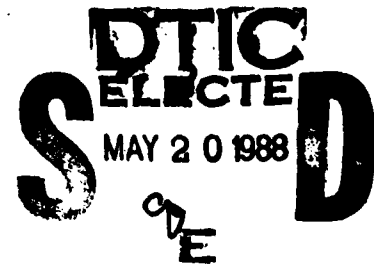
REAL-TIME SNOW SIMULATION MODEL FOR THE MONONGAHELA RIVER BASIN

by

Daniel H. Hoggan, John C. Peters, and Werner Loehlein

Technical Paper No. 118

December 1987



Approved for Public Release. Distribution Unlimited.

88 5 19 068

REAL-TIME SNOW SIMULATION MODEL FOR THE MONONGAHELA RIVER BASIN¹

Daniel H. Hoggan, John C. Peters, and Werner Loehlein²

ABSTRACT: The Pittsburgh District, U.S. Army Corps of Engineers, is responsible for operating two multipurpose reservoirs in the 7384 square mile (19198 square kilometer) Monongahela Basin. A third reservoir, presently under construction, will soon be operating. The real-time forecasting of runoff for operational purposes requires simulation of snow accumulation and snowmelt throughout the Basin during the winter season. This article describes capabilities of SNOSIM, a model being developed for performing such simulation. The application of this model as part of a comprehensive system of water control software, and some initial simulation results are presented.

(KEY TERMS: real-time forecasting; snow simulation; snowmelt modeling; reservoir operation; Monongahela River.)

BASIN AND RESERVOIR SYSTEM CHARACTERISTICS

The Monongahela Basin is situated in the unglaciated Allegheny Plateau and is characterized by rugged, high rolling hills. The Basin is long and narrow with a total length of 144 miles and an average width of 51 miles. Elevations range from about 4800 feet at the southern divide to 710 feet at Pittsburgh (Figure 1).

Two existing reservoirs, Tygart and Youghiogheny, and a reservoir presently being constructed, Stonewall Jackson, comprise a system for which the primary purpose is flood control. The reservoirs are also used to store water for navigation, pollution abatement, and water supply. The winter season flood control capacities for the Tygart, Youghiogheny, and Stonewall Jackson reservoirs are 278,000, 151,000, and 38,550 acre feet, respectively. Flood control reservations for the summer season are somewhat less.

A real-time data collection network for water control is presently based on 52 self-timed data collection platforms (DCP's) that report via satellite telemetry. The DCP's report stages and elevations measured at 33 stream and reservoir sites, air temperature at 11 sites, and precipitation at 28 sites. Precipitation data from an additional 14 sites outside the Basin are used for making estimates of subbasin-average precipitation. The Basin is divided into 40 subbasins for purposes of runoff simulation.

COMPUTER PROGRAM SNOSIM

The SNOSIM program simulates snow accumulation, ripening, and melt processes to determine snowmelt contributions to runoff, and computes rainfall attenuation and lag caused by snow on the ground. Rain that passes through the snowpack is added to snowmelt to obtain "equivalent precipitation," which is treated as being equivalent to rainfall as an input to a rainfall-runoff model (Hoggan, *et al.*, 1986).

SNOSIM is a component of an on-line software system that includes the capability for data acquisition and processing, precipitation analysis, streamflow forecasting, reservoir system analysis, and graphical display of data and simulation results (Pabst and Peters, 1983). A Data Storage System (DSS) provides a means for the storage and retrieval of measured data and simulation results. An interactive executive program facilitates the use of the software system. Alternative future precipitation and temperature scenarios, or alternative operational constraints, can be readily specified with this program.

SNOSIM is unusual in at least two respects: 1) its computational time interval can be made very short (3 hours, for example), and 2) it is designed for shallow snowpacks. Most snowmelt models have been developed for relatively deep snowpacks in mountainous locations, and most compute at longer time intervals. The procedures embodied in the SNOSIM program are those used by the Pittsburgh District, Corps of Engineers, and would be most applicable to shallow to medium depth snowpacks.

DATA REQUIREMENTS

Data requirements for SNOSIM are subbasin averages of maximum and minimum temperatures, snow depths, and precipitation. Aperiodic snow density data can be used for updating computed snow density. In addition to the streamflow and precipitation data available from the network described earlier, daily measurements of temperature (30 stations) and snow depth (50 stations) are available, and aperiodic measurements of snow density are taken at three stations.

¹ Paper No. 87016 of the *Water Resources Bulletin*. Discussions are open until August 1, 1988.

² Respectively, Professor, Civil and Environmental Engineering, Utah Water Research Laboratory, Utah State University, Logan, Utah 84322; Hydraulic Engineer, Hydrologic Engineering Center, 609 Second St., Davis, California 95616; and Hydraulic Engineer, Pittsburgh District, Corps of Engineers, William S. Moorhead Federal Building, 1000 Liberty Ave., Pittsburgh, Pennsylvania 15222-4186.

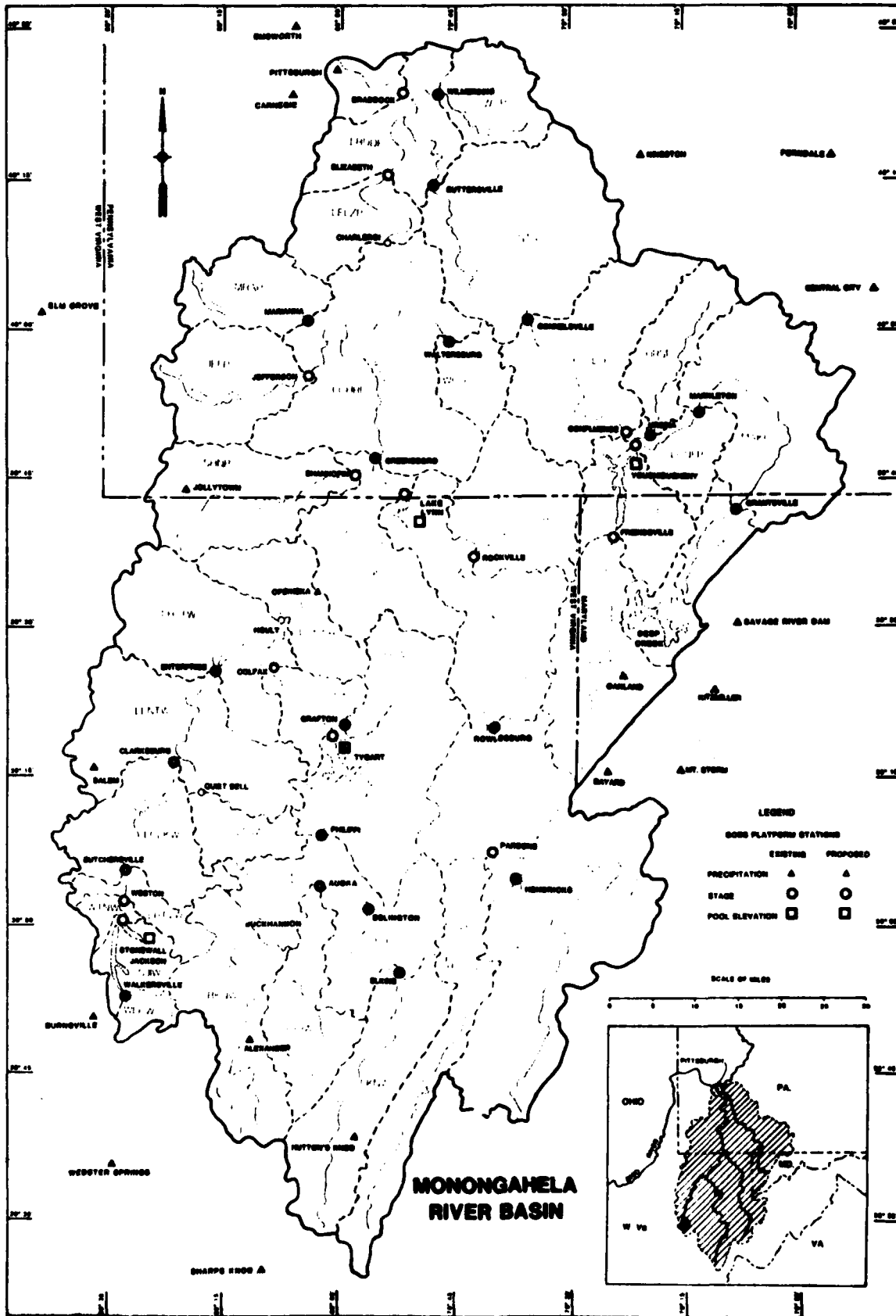


Figure 1. Map of the Monongahela River Basin.

DATA ADJUSTMENTS

Snow depths ordinarily reach a maximum of three to four feet at the highest elevations in the Basin, and all of the snow may melt within a few days from the influence of abnormally high temperatures. The time interval of computations, which may be selected from a range of one to several hours, must be relatively short (e.g., 3 hours) to effectively simulate these conditions. Daily maximum and minimum temperatures are converted to simulation time interval values according to a diurnal temperature distribution used by Pittsburgh District. A linear approximation of temperature distribution between maximum and minimum points is used to simplify computations (Figure 2). Daily snow depths are interpolated linearly to obtain simulation time interval values. Although actual changes in snow depth are not linear, particularly during periods of freezing and thawing, the effect of this assumption on simulation results is minimal because of the small deviation that would occur during a 24-hour period.

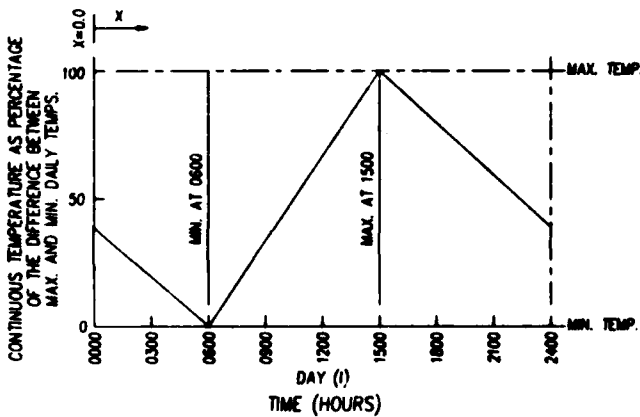


Figure 2. Diurnal Temperature Curve.

Observed snow depths under 20 inches are adjusted upward according to a curve (Figure 3) developed by the Pittsburgh District. For snow depths in this range, the District has found that observed depths based on gage readings are consistently low when compared with the results of snow surveys.

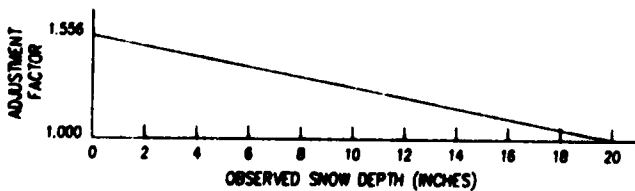


Figure 3. Snow Depth Adjustment Curve.

COMPUTATIONAL LOGIC

Precipitation is divided into rain or snow according to a freezing temperature index. If the average temperature in $^{\circ}\text{F}$ is greater than freezing temperature plus 2 degrees, precipitation is computed as rain. Rain, thus obtained, is treated in one of three ways: 1) if there is no snow on the ground, it is added directly to equivalent precipitation; 2) if snowpack exists, but is not ripe (snow density is less than threshold melt density), then the rain is absorbed by the snow; and 3) if the snow is ripe, the rain is lagged before being added to equivalent precipitation.

Snow ripening and melt processes are divided into two stages, from the beginning of the period of simulation until the time of forecast, and from the time of forecast until the end of the period of simulation.

First Stage of Simulation

In the first stage, subbasin averages of observed precipitation, temperature, and snow depth and an initial value of snow density are used to compute a regular time series of water equivalent, snowmelt, and snow density values. This series of computations may be updated with a user assigned value of snow density for any time interval in the simulation.

Tracking of the average snowpack density is essential in the simulation to determine when melt will be triggered. In the model, it is assumed that the average density must reach a threshold density to indicate ripeness before melt will leave the snowpack. Density accounting is accomplished by additions and subtractions to the water equivalent. Precipitation, whether rain or snow, is added; snowmelt and evaporation/sublimation are subtracted.

When snow density is less than the threshold melt density and precipitation occurs, the water equivalent is equal to the water equivalent in the previous time interval plus precipitation.

When there is no precipitation, the water equivalent of the previous period is reduced by a small loss, which includes an evaporation/sublimation loss and any loss from melt and infiltration at the ground surface interface. Evaporation/sublimation from the snowpack is a function of the vapor pressure difference between the snow surface and the air, and wind speed. At middle latitudes during the winter and early spring, the evaporation/sublimation from snow averages less than 0.5 inches per month (U.S. Army Corps of Engineers, 1960). This would amount to about 0.02 inches per day. Loss due to ground melt and infiltration could increase this rate slightly.

If the snow is ripe and the air temperature is above freezing, snowmelt is occurring, and the water equivalent from the previous period is reduced by the amount of melt. Although rainfall also may be occurring, the rain is in transit through the snowpack and does not add to the water equivalent of the snow. The rain is accounted for separately and added to melt later in the process after adjustment for lag. Rain does, however, accelerate snowmelt slightly, so the melt

rate is increased by an amount proportional to the intensity of the rainfall (U.S. Army Corps of Engineers, 1960).

Combining the rain-melt equation with that for other melt yields an equation for melt during time interval I .

$$M_i = \frac{I}{1440} (C_M + 0.007 R_i) (T_i - T_F) \quad (1)$$

where:

M_i = snow melt in inches,

I = simulation time interval in minutes,

C_M = coefficient of snowmelt (degree-day factor) in inches of melt per mean daily degree ($^{\circ}$ F) above freezing,

R_i = observed rainfall in inches,

T_i = air temperature in $^{\circ}$ F, and

T_F = freezing temperature in $^{\circ}$ F.

Otherwise, if there is no rainfall, the equation is basically the same except that the rain melt factor is eliminated.

After snowmelt has been computed for a time interval, the water equivalent is computed.

Second Stage of Simulation

In the second stage of simulation, which occurs after the time of forecast, predictions of precipitation and temperature are used, and the computations are essentially the same as in the preceding stage except that no snow depths are available. Snow depths are computed in four different ways depending on temperature and snow density conditions.

In the first case, when the snow density is equal to or above the threshold melt density and the air temperature is greater than freezing, melt is occurring and the density can be expected to remain fairly constant. Snow depth under these conditions is computed by dividing the water equivalent in the current time interval by the density in the preceding time interval.

$$S_i = \frac{W_i}{D_{i-1}} \quad (2)$$

where:

S_i = computed snow depth in inches,

W_i = water equivalent of snowpack in inches of water, and

D_{i-1} = percent snow density expressed as a decimal.

This approach produces a reasonable approximation of snow depth because the density is relatively stable while melt is occurring.

In the second case, when snow density is less than melt density and the air temperature is greater than freezing, the snow depth is reduced slightly by consolidation. Although no melt is occurring in the usual sense of water leaving the snowpack, liquid water from melt occurring at the snow surface is moving to lower levels and increasing snowpack density (Corps of Engineers, 1956). For shallow snowpacks, the reduction in the snow depth under these conditions is directly proportional to the amount of melt occurring at the surface based on air temperature and inversely proportional to the average density of the snowpack.

$$S_i = S_{i-1} - \left(\frac{I}{1440} \cdot \frac{C_M(T_i - T_F)}{D_{i-1}} \right) \quad (3)$$

In the third case, when the air temperature is below freezing and the snow depth is greater than zero, the snow depth in the current period is equal to snow depth in the previous period reduced by sublimation and increased by snowfall, if any has occurred. The average density of new snow in the United States has been found to be approximately 10 percent (Osborn, *et al.*, 1982), and this value is adopted for computing the depth of new snow.

$$S_i = S_{i-1} - \left(\frac{I}{1440} \cdot \frac{C_s}{(D_{i-1} + \frac{0.10}{O_i})} \right) \quad (4)$$

where:

C_s = sublimation/evaporation loss in inches per day, and

O_i = observed snow fall in inches of water.

In the fourth case, when the air temperature is less than freezing and there is no snow on the ground for the previous period, the snow depth is equal to any new snowfall that occurs during the period divided by the density of new snow (0.10). The snow density for each time interval during the forecast period is computed by dividing the water equivalent by the snow depth.

The lag of liquid water in transit through the snowpack is computed with a lag factor that has the effect of imposing minutes of lag per inch of snow depth. A study by the U.S. Army Corps of Engineers (1960) indicates 3 to 4 hours of lag for moderate depths of snow. The Pittsburgh District has used 4 to 6 hours of lag for depths ranging up to 2 or 3 feet. Based on this information, 30 minutes of lag per inch of depth is probably reasonable for vertical drainage.

Since most snowmelt originates at the snow surface and travels down through the snowpack, snowmelt as well as rain are adjusted for lag.

In regions of mild to flat slopes, the delay to runoff caused by snowpack may be much longer than for vertical transit of water through the snowpack alone (U.S. Army Corps of Engineers, 1960). Thus, a large lag factor may be needed to simulate runoff in areas of low relief. Although a single (i.e., global) coefficient of lag may be set for all subbasins in the model with program input, larger or smaller lag coefficients for selected subbasins also may be specified.

The lag diminishes with decreasing snow depth; however, for shallow snowpacks that may entirely disappear during the course of a snowmelt event, a counteracting effect may tend to increase the lag of snowmelt as depth decreases. In a subbasin with moderate to high relief, typical of subbasins in the Monongahela River Basin, snow cover recession generally will begin at the mouth of the subbasin and move upstream toward higher and more distant areas. Thus, as the effective center of snowpack mass moves farther away from the mouth, the average travel time for the snowmelt to reach the mouth increases. To compensate to some extent for this effect, the lag for snowmelt, established at the depth when the pack first becomes ripe, is retained until the snow depth diminishes to zero. Rainfall lag, on the other hand, is not affected in this manner and decreases with diminishing depth.

As a final step, after rain and snowmelt are adjusted for lag, lagged amounts of each occurring in the same time interval are added and combined with any other rainfall (which may occur in the case of snow-free time intervals) to produce an equivalent precipitation hyetograph for the entire period of simulation. When there is no snow on the ground, the equivalent precipitation is set equal to the observed rainfall.

INPUT AND OUTPUT

Much of the input required, aside from the climatological data to be processed, is ordinarily generated with the interactive executive program that links SNOSIM with data storage and other software. However, the input can alternatively be entered with a card image input file. The forecast data and time, the starting and ending times of simulation, and the computational time interval are set. Zone-specified future precipitation and maximum and minimum temperature departures from normal may be entered. Five simulation parameters may be set: 1) the coefficient of lag (COEFLG); 2) the freezing temperature (FRZTP); 3) the threshold melt density (RMLTDN); 4) the snowmelt coefficient (SMCOEF); and 5) the sublimation factor (SUBFAC). Snow density data for updating can be specified either zonally or for individual subbasins and by a specified amount or percentage change to existing values.

Since the model has the capability to assign temperature, snow density, and precipitation values by zones, a basin zone file is required, which assigns subbasins to common zones.

Departures from normal daily temperatures are used in forecasting, and normal daily temperatures are used to fill in missing data, so a file of normal daily temperatures for each subbasin also is required. This file can be generated from daily normal temperature data for stations with the program PRECIP (U.S. Army Corps of Engineers, 1986), which computes subbasin averages from station data.

Output from the model consists of two tables: a subbasin output table for each subbasin, which lists observed and computed values of key variables for all time intervals in the simulation; and a summary table, which presents totals and other comparative data for all subbasins.

PROCEDURE FOR REAL TIME FORECASTING

The following sequence of operations is performed in a real-time application of SNOSIM.

The computer program PRECIP is used to develop subbasin-average values of precipitation with a 3-hour interval, and of maximum and minimum air temperature, and snow depth, with a daily interval. PRECIP is designed to search for the nearest reporting gages so that missing data does not have to be filled in prior to developing the estimates with spatial and other weighting factors.

SNOSIM is then executed to determine the equivalent precipitation. The information required by the program is automatically retrieved from various files. Such information includes:

- a. time parameters that define the starting and ending times for the simulation and the time of forecast;
- b. subbasin-average values for precipitation, maximum and minimum daily temperature and snow depth;
- c. future precipitation amounts, and future maximum and minimum daily temperatures (in terms of departures from normal);
- d. normal daily maximum and minimum temperatures; and
- e. snow density data, if available.

The computer program HEC-1F (U.S. Army Corps of Engineers, 1986) is used to calculate discharge hydrographs for each subbasin. Hydrographs are routed and combined throughout the basin to provide forecasted hydrographs of inflow to reservoirs and hydrographs at downstream control points. Observed streamflow data are used wherever it is available in the process of tracking flood wave movement through the stream network. The capability also exists to optimize runoff parameters for gaged headwater subbasins (Peters and Ely, 1985).

Both the discharge hydrographs that are calculated with HEC-1F and the reservoir storages are input to the computer program HEC-5 (U.S. Army Corps of Engineers, 1986) for simulation of the reservoir system and determination of reservoir releases. Releases are determined in accordance with constraints at downstream control points while keeping the system "in balance." A wide variety of factors that affect release decisions can be accommodated, including

channel capacities at downstream control points, emergency conditions requiring prereleases, minimum-flow requirements, etc. Output such as hydrographs of discharge, reservoir stage, and storage are written to the Data Storage System so that they can be readily displayed and analyzed.

Iterations of the above sequence can be made as required to enable the evaluation of alternative future precipitation/temperature conditions or operations constraints.

TEST APPLICATION

A snowmelt flood event in February 1985 was used for testing SNOSIM. A build up of snowpack in mid-February was completely melted by high temperatures in the period of a week, producing high runoff.

The model was first applied to the 15 headwater subbasins in the Monongahela River Basin. No special weighting factors for temperatures or snow depths were used in the computation of subbasin averages from gage data. The program PRECIP has the capability for introducing normalized weights, such as normal maximum and minimum temperatures and normal snow depths. Elevation differences may also be used for weighting temperature data. The purpose of the weighting is to adjust point (gage) values for local variations.

The real-time rainfall-runoff model HEC1-F was run following SNOSIM, using equivalent precipitation computed by SNOSIM as an input to compute hydrographs for all subbasins. A comparison of the computed and the observed hydrographs revealed that the fit was quite good in some subbasins; for example, subbasin MAKP (Figure 4), but the timing of peak discharge was not good in others; for example, subbasin BKNW (Figure 5). Through the introduction of snow depth weighting based upon elevation differences and adjustment of lag factors, a satisfactory fit of hydrographs could be achieved for all subbasins (note the improvement in fit for subbasin BKNW in Figure 6).

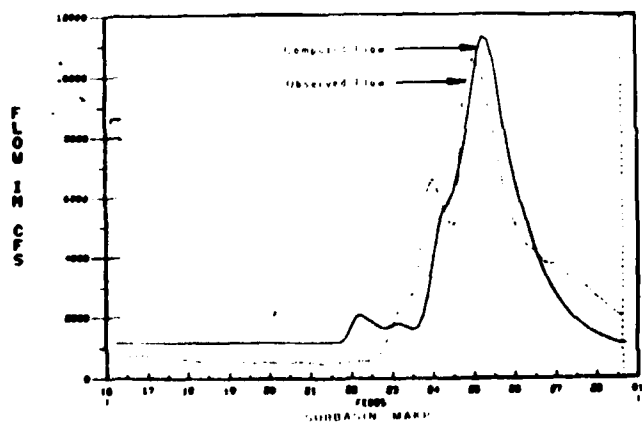


Figure 4. Observed and Computed Flow for Subbasin MAKP.

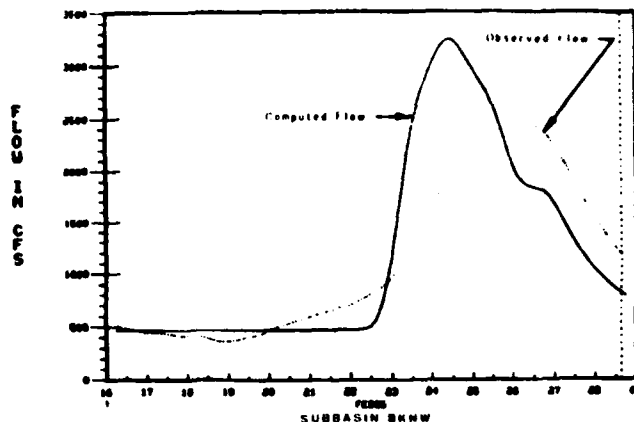


Figure 5. Observed and Computed Flow for Subbasin BKNW.

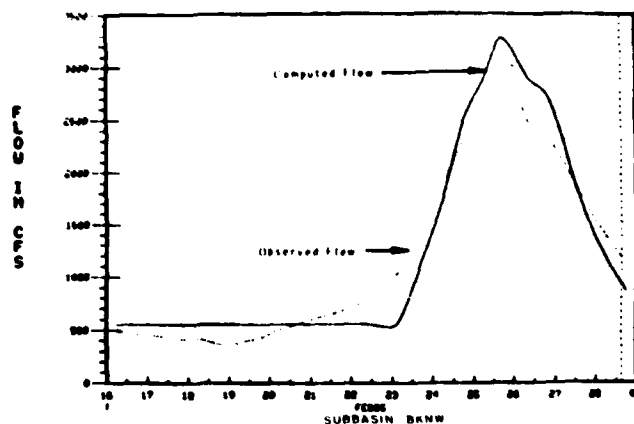


Figure 6. Observed and Computed (with weighting and lag adjustment) Flows for Subbasin BKNW.

One of the key computations in SNOSIM is for the snow depth after the time of forecast, when no observed values are available. Comparison of computed with observed snow depths indicated that the model produced a reasonably good approximation. See the results for subbasin MAKP shown in Figure 7. Because of the lack of significant rainfall in the test event, verification of the rain-on-snow melt simulation in the model was not possible.

CONCLUSIONS

Although snow accumulation and melt processes are highly complex and are influenced by a large number of variables, an attempt was made to keep the level of model sophistication consistent with data availability and operational requirements. Thus, data inputs have been limited to temperature, snow depth, precipitation, and snow density. However,

several parameters and weighting factors can be adjusted by the user to reflect the influence of complex factors that are not included in the model.

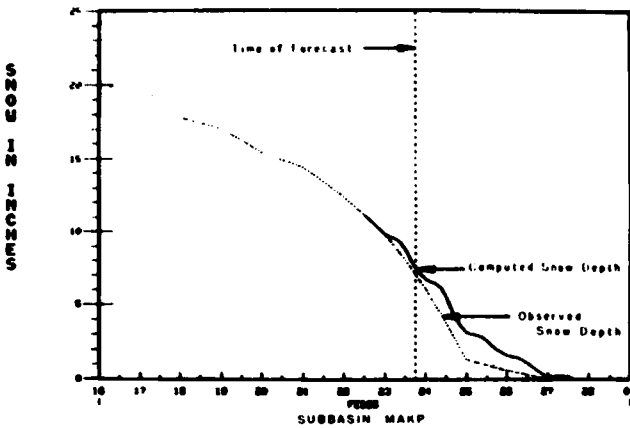


Figure 7. Observed and Computed Snow Depths for Subbasin MAKP.

Testing of the model with data from the February 1985 flood event indicated that obtaining the correct timing of runoff from subbasins is probably the most significant problem to be anticipated. Since different factors or combinations of factors can be employed to influence the timing, the question arises as to what strategy to use. For example, all of the following factors affect timing, so any or all could be considered for adjustment: 1) initial snow density; 2) threshold melt density; 3) freezing temperature (air); 4) snowmelt coefficient; 5) coefficient of lag; 6) temperature weighting factors used in subbasin averaging by program PRECIP; 7) snow depth weighting factors used in subbasin averaging by program PRECIP; and 8) loss rates used by program HEC1-F.

The factors that produce the greatest effect on timing are the weighting factors used in subbasin averaging and the lag factor. In testing the model, lag factors were used almost exclusively to correct timing problems; however, future operation of the model may indicate that more emphasis needs to be given to weighting in the subbasin averaging process. Good spatial averaging of snow depth data measured at stations is particularly difficult to achieve, and further research in this area is needed. Testing of the model with this one event obviously is just a start in the process of developing an effective operational system. Refinement of the model based on experience and data from future events is anticipated.

ACKNOWLEDGMENTS

Appreciation is expressed to Dr. Arthur Pabst of the Corps of Engineers Hydrologic Engineering Center (HEC) for useful suggestions in developing procedures and designing the program. Dennis Huff of HEC was particularly helpful in assisting with data processing and program development. William Salesky and Robert Yue of the Corps of Engineers Pittsburgh District provided valuable assistance in providing data and information.

LITERATURE CITED

Hoggan, D. H., J. C. Peters, and W. Loehlein, 1986. Real-Time Precipitation-Snowmelt Model for the Monongahela River Basin. Water Forum '86: World Water Issues in Evolution, Vol. 1, American Society of Civil Engineers.

Osborn, H. P., L. J. Lane, C. W. Richardson, and M. Molnau, 1982. Precipitation. In: Hydrologic Modeling of Small Watersheds. American Society of Agricultural Engineers.

Pabst, A. F. and J. C. Peters, 1983. A Software System to Aid in Making Real-Time Water Control Decisions. Paper presented at the Technical Conference on Mitigation of Natural Hazards Through Real-Time Data Collection and Hydrological Forecasting. Technical Paper No. 89, Hydrologic Engineering Center, Davis, California.

Peters, J. C. and P. B. Ely, 1985. Flood-Runoff Forecasting With HEC-1F. Water Resources Bulletin 21(1):7-13.

U.S. Army Corps of Engineers, 1956. Snow Hydrology. North Pacific Division, Portland, Oregon.

U.S. Army Corps of Engineers, 1960. Runoff From Snowmelt. EM 1110-2-1406.

U.S. Army Corps of Engineers, 1986. Water Control Software, Forecast and Operations. Hydrologic Engineering Center, Davis, California.

| | |
|--------------------|-------------------------------------|
| Accession For | |
| NTIS GRA&I | <input checked="" type="checkbox"/> |
| DTIC TAB | <input type="checkbox"/> |
| Unannounced | <input type="checkbox"/> |
| Justification | |
| By _____ | |
| Distribution/ | |
| Availability Codes | |
| Dist | Avail and/or Special |
| A-1 | |



UNCLASSIFIED

SECURITY CLASSIFICATION OF THIS PAGE

REPORT DOCUMENTATION PAGE

Form Approved
OMB No. 0704-0188

| | | | |
|---|---|--|-------------------------|
| 1a. REPORT SECURITY CLASSIFICATION UNCLASSIFIED | | 1b. RESTRICTIVE MARKINGS | |
| 2a. SECURITY CLASSIFICATION AUTHORITY | | 3. DISTRIBUTION/AVAILABILITY OF REPORT | |
| 2b. DECLASSIFICATION/DOWNGRADING SCHEDULE | | | |
| 4. PERFORMING ORGANIZATION REPORT NUMBER(S) Technical Paper No. 118 | | 5. MONITORING ORGANIZATION REPORT NUMBER(S) | |
| 6a. NAME OF PERFORMING ORGANIZATION U.S. Army Corps of Engineers The Hydrologic Engineering Center | 6b. OFFICE SYMBOL (if applicable) CEWRC-HEC | 7a. NAME OF MONITORING ORGANIZATION | |
| 6c. ADDRESS (City, State, and ZIP Code) 609 Second Street Davis, CA 95616 | | 7b. ADDRESS (City, State, and ZIP Code) | |
| 8a. NAME OF FUNDING/SPONSORING ORGANIZATION | 8b. OFFICE SYMBOL (if applicable) | 9. PROCUREMENT INSTRUMENT IDENTIFICATION NUMBER | |
| 8c. ADDRESS (City, State, and ZIP Code) | | 10. SOURCE OF FUNDING NUMBERS | |
| | | PROGRAM ELEMENT NO. | PROJECT NO. |
| | | TASK NO. | WORK UNIT ACCESSION NO. |
| 11. TITLE (Include Security Classification) Real-Time Snow Simulation Model for the Monongahela River Basin (UNCLASSIFIED) | | | |
| 12. PERSONAL AUTHOR(S) Daniel H. Hoggan, John C. Peters, Werner Loehlein | | | |
| 13a. TYPE OF REPORT Technical Paper | 13b. TIME COVERED FROM _____ TO _____ | 14. DATE OF REPORT (Year, Month, Day) 1987 December | 15. PAGE COUNT 7 |
| 16. SUPPLEMENTARY NOTATION Paper No. 87016, Published in Vol. 23, No. 6 of the Water Resources Bulletin, December 1987 (American Water Resources Association) | | | |
| 17. COSATI CODES | | 18. SUBJECT TERMS (Continue on reverse if necessary and identify by block number) | |
| FIELD | GROUP | Real-Time Forecasting; Snow Simulation; Snowmelt Modeling; Reservoir Operations; Monongahela River | |
| | | | |
| | | | |
| 19. ABSTRACT (Continue on reverse if necessary and identify by block number) The Pittsburgh District, U.S. Army Corps of Engineers, is responsible for operating two multipurpose reservoirs in the 7384 square mile (19198 square kilometer) Monongahela Basin. A third reservoir, presently under construction, will soon be operating. The real-time forecasting of runoff for operational purposes requires simulation of snow accumulation and snowmelt throughout the Basin during the winter season. This article describes capabilities of SNOSIM, a model being developed for performing such simulation. The application of this model as part of a comprehensive system of water control software, and some initial simulation results are presented. | | | |
| 20. DISTRIBUTION/AVAILABILITY OF ABSTRACT <input type="checkbox"/> UNCLASSIFIED/UNLIMITED <input type="checkbox"/> SAME AS RPT. <input type="checkbox"/> DTIC USERS | | 21. ABSTRACT SECURITY CLASSIFICATION | |
| 22a. NAME OF RESPONSIBLE INDIVIDUAL | | 22b. TELEPHONE (Include Area Code) | 22c. OFFICE SYMBOL |

TECHNICAL PAPER SERIES
(\$2.00 per paper)

- TP-1 Use of Interrelated Records to Simulate Streamflow
- TP-2 Optimization Techniques for Hydrologic Engineering
- TP-3 Methods of Determination of Safe Yield and Compensation Water from Storage Reservoirs
- TP-4 Functional Evaluation of a Water Resources System
- TP-5 Streamflow Synthesis for Ungaged Rivers
- TP-6 Simulation of Daily Streamflow
- TP-7 Pilot Study for Storage Requirements for Low Flow Augmentation
- TP-8 Worth of Streamflow Data for Project Design - A Pilot Study
- TP-9 Economic Evaluation of Reservoir System Accomplishments
- TP-10 Hydrologic Simulation in Water-Yield Analysis
- TP-11 Survey of Programs for Water Surface Profiles
- TP-12 Hypothetical Flood Computation for a Stream System
- TP-13 Maximum Utilization of Scarce Data in Hydrologic Design
- TP-14 Techniques for Evaluating Long-Term Reservoir Yields
- TP-15 Hydrostatistics - Principles of Application
- TP-16 A Hydrologic Water Resource System Modeling Techniques
- TP-17 Hydrologic Engineering Techniques for Regional Water Resources Planning
- TP-18 Estimating Monthly Streamflows Within a Region
- TP-19 Suspended Sediment Discharge in Streams
- TP-20 Computer Determination of Flow Through Bridges
- TP-21 An Approach to Reservoir Temperature Analysis
- TP-22 A Finite Difference Method for Analyzing Liquid Flow in Variably Saturated Porous Media
- TP-23 Uses of Simulation in River Basin Planning
- TP-24 Hydroelectric Power Analysis in Reservoir Systems
- TP-25 Status of Water Resource Systems Analysis
- TP-26 System Relationships for Panama Canal Water Supply
- TP-27 System Analysis of the Panama Canal Water Supply
- TP-28 Digital Simulation of an Existing Water Resources System
- TP-29 Computer Applications in Continuing Education
- TP-30 Drought Severity and Water Supply Dependability.
- TP-31 Development of System Operation Rules for an Existing System by Simulation
- TP-32 Alternative Approaches to Water Resource System Simulation
- TP-33 System Simulation for Integrated Use of Hydroelectric and Thermal Power Generation
- TP-34 Optimizing Flood Control Allocation for a Multipurpose Reservoir
- TP-35 Computer Models for Rainfall-Runoff and River Hydraulic Analysis
- TP-36 Evaluation of Drought Effects at Lake Atitlan
- TP-37 Downstream Effects of the Levee Overtopping at Wilkes-Barre, PA, During Tropical Storm Agnes
- TP-38 Water Quality Evaluation of Aquatic Systems
- TP-39 A Method for Analyzing Effects of Dam Failures in Design Studies
- TP-40 Storm Drainage and Urban Region Flood Control Planning
- TP-41 NEC-5C, A Simulation Model for System Formulation and Evaluation
- TP-42 Optimal Sizing of Urban Flood Control Systems
- TP-43 Hydrologic and Economic Simulation of Flood Control Aspects of Water Resources Systems
- TP-44 Sizing Flood Control Reservoir Systems by Systems Analysis
- TP-45 Techniques for Real-Time Operation of Flood Control Reservoirs in the Merrimack River Basin
- TP-46 Spatial Data Analysis of Nonstructural Measures
- TP-47 Comprehensive Flood Plain Studies Using Spatial Data Management Techniques
- TP-48 Direct Runoff Hydrograph Parameters Versus Urbanization
- TP-49 Experience of NEC in Disseminating Information on Hydrological Models
- TP-50 Effects of Dam Removal: An Approach to Sedimentation
- TP-51 Design of Flood Control Improvements by Systems Analysis: A Case Study
- TP-52 Potential Use of Digital Computer Ground Water Models
- TP-53 Development of Generalized Free Surface Flow Models Using Finite Element Techniques
- TP-54 Adjustment of Peak Discharge Rates for Urbanization
- TP-55 The Development and Servicing of Spatial Data Management Techniques in the Corps of Engineers
- TP-56 Experiences of the Hydrologic Engineering Center in Maintaining Widely Used Hydrologic and Water Resource Computer Models
- TP-57 Flood Damage Assessments Using Spatial Data Management Techniques
- TP-58 A Model for Evaluating Runoff-Quality in Metropolitan Master Planning

- TP-59 Testing of Several Runoff Models on an Urban Watershed
- TP-60 Operational Simulation of a Reservoir System with Pumped Storage
- TP-61 Technical Factors in Small Hydropower Planning
- TP-62 Flood Hydrograph and Peak Flow Frequency Analysis
- TP-63 HEC Contribution to Reservoir System Operation
- TP-64 Determining Peak-Discharge Frequencies in an Urbanizing Watershed: A Case Study
- TP-65 Feasibility Analysis in Small Hydropower Planning
- TP-66 Reservoir Storage Determination by Computer Simulation of Flood Control and Conservation Systems
- TP-67 Hydrologic Land Use Classification Using LANDSAT
- TP-68 Interactive Nonstructural Flood-Control Planning
- TP-69 Critical Water Surface by Minimum Specific Energy Using the Parabolic Method
- TP-70 Corps of Engineers Experience with Automatic Calibration of a Precipitation-Runoff Model
- TP-71 Determination of Land Use from Satellite Imagery for Input to Hydrologic Models
- TP-72 Application of the Finite Element Method to Vertically Stratified Hydrodynamic Flow and Water Quality
- TP-73 Flood Mitigation Planning Using HEC-SAM
- TP-74 Hydrographs by Single Linear Reservoir Model
- TP-75 HEC Activities in Reservoir Analysis
- TP-76 Institutional Support of Water Resource Models
- TP-77 Investigation of Soil Conservation Service Urban Hydrology Techniques
- TP-78 Potential for Increasing the Output of Existing Hydroelectric Plants
- TP-79 Potential Energy and Capacity Gains from Flood Control Storage Reallocation at Existing U. S. Hydropower Reservoirs
- TP-80 Use of Non-Sequential Techniques in the Analysis of Power Potential at Storage Projects
- TP-81 Data Management Systems for Water Resources Planning
- TP-82 The New HEC-1 Flood Hydrograph Package
- TP-83 River and Reservoir Systems Water Quality Modeling Capability
- TP-84 Generalized Real-Time Flood Control System Model
- TP-85 Operation Policy Analysis: Sam Rayburn Reservoir
- TP-86 Training the Practitioner: The Hydrologic Engineering Center Program
- TP-87 Documentation Needs for Water Resources Models
- TP-88 Reservoir System Regulation for Water Quality Control
- TP-89 A Software System to Aid in Making Real-Time Water Control Decisions
- TP-90 Calibration, Verification and Application of a Two-Dimensional Flow Model
- TP-91 HEC Software Development and Support
- TP-92 Hydrologic Engineering Center Planning Models
- TP-93 Flood Routing Through a Flat, Complex Flood Plain Using a One-Dimensional Unsteady Flow Computer Program
- TP-94 Dredged-Material Disposal Management Model
- TP-95 Infiltration and Soil Moisture Redistribution in HEC-1
- TP-96 The Hydrologic Engineering Center Experience in Nonstructural Planning
- TP-97 Prediction of the Effects of a Flood Control Project on a Meandering Stream
- TP-98 Evolution in Computer Programs Causes Evolution in Training Needs: The Hydrologic Engineering Center Experience
- TP-99 Reservoir System Analysis for Water Quality
- TP-100 Probable Maximum Flood Estimation - Eastern United States
- TP-101 Use of Computer Program HEC-5 for Water Supply Analysis
- TP-102 Role of Calibration in the Application of HEC-6
- TP-103 Engineering and Economic Considerations in Formulating
- TP-104 Modeling Water Resources Systems for Water Quality
- TP-105 Use of a Two-Dimensional Flow Model to Quantify Aquatic Habitat
- TP-106 Flood-Runoff Forecasting with HEC-1F
- TP-107 Dredged-Material Disposal System Capacity Expansion
- TP-108 Role of Small Computers in Two-Dimensional Flow Modeling
- TP-109 One-Dimensional Model For Mud Flows
- TP-110 Subdivision Froude Number
- TP-111 HEC-50: System Water Quality Modeling
- TP-112 New Developments in HEC Programs for Flood Control
- TP-113 Modeling and Managing Water Resource Systems for Water Quality
- TP-114 Accuracy of Computed Water Surface Profiles - Executive Summary
- TP-115 Application of Spatial-Data Management Techniques in Corps Planning
- TP-116 The HEC's Activities in Watershed Modeling
- TP-117 HEC-1 and HEC-2 Applications on the MicroComputer
- TP-118 Real-Time Snow Simulation Model for the Monongahela River Basin

END

DATE

FILMED

DTIC

JULY 88