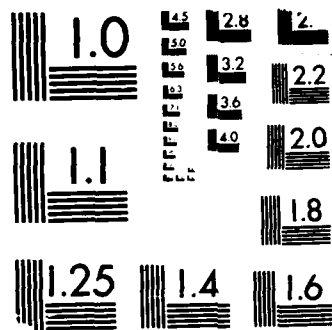


AD-A193 313 CORRELATIONS OF NORBORNENYL CROSSLINKED POLYIMIDE RESIN 1/1
STRUCTURES WITH R. (U) NATIONAL AERONAUTICS AND SPACE
ADMINISTRATION CLEVELAND OH LE. W B ALSTON 1988
UNCLASSIFIED NASA-E-3966 NASA-TM-100791 F/G 7/6 NL





MICROCOPY RESOLUTION TEST CHART
NBS 1963-A

2

AD-A193 313

NASA
Technical Memorandum 100791

AVSCOM
Technical Report 88-C-004

DTIC FILE COPY

Correlations of Norbornenyl Crosslinked Polyimide Resin Structures With Resin Thermo-Oxidative Stability, Resin Glass Transition Temperature and Composite Initial Mechanical Properties

William B. Alston
Propulsion Directorate
U.S. Army Aviation Research and Technology Activity—AVSCOM
Lewis Research Center
Cleveland, Ohio

DTIC
ELECTE
APR 04 1988
S H D

Prepared for the
Multidisciplinary Workshop on "Chemistry and Properties of High Performance Composites"
sponsored by the American Chemical Society
Jackson, Wyoming, March 28-31, 1988

NASA



DISTRIBUTION STATEMENT A
Approved for public release
Distribution Unlimited

88 4 1 121

Correlations of Norbornenyl Crosslinked Polyimide Resin Structures With
Resin Thermo-Oxidative Stability, Resin Glass Transition Temperature
and Composite Initial Mechanical Properties

William B. Alston
Propulsion Directorate
U.S. Army Aviation Research and Technology Activity - AVSCOM
Lewis Research Center
Cleveland, OH 44135

As part^{1,2} of a continuation of a larger investigation directed toward understanding the high temperature degradation of addition cured polymers, seventy norbornenyl cured polyimide resins were processed as neat resin discs and their long-term thermo-oxidative stability at 316°C, and glass transition temperatures (T_g) were determined after curing and postcuring at 316°C. The resin variables investigated in this study were systematic changes in both the monomeric composition and in the molecular distance between the norbornenyl crosslinks. From the resin compositions that exhibited satisfactory processing flow, thirty different unidirectional Celion 6000 graphite fiber composites were fabricated and characterized for composite initial mechanical properties and, for later portions of the larger study, long-term composite thermo-oxidative stability and composite mechanical property retention at 316°C. The purpose of this portion of the larger study was threefold. The first purpose was to determine if any relationships existed between the rate of resin weight loss per unit surface area and the monomer combinations used. The second purpose was to determine if any relationships existed between T_g and changing the distance and/or monomer variation between the norbornenyl crosslink sites. The third purpose was to determine if any relationships existed between any molecular structural modification/T_g relationship observed and the composite initial mechanical strengths¹ obtained. What was observed for the thermo-oxidative stability portion¹ of the study was the 316°C weight loss always decreases with decreasing aliphatic content. However, more importantly, the 316°C weight loss decreases in direct correlation to increasing benzylic/aliphatic stoichiometry over a wide range of resin compositions when the norbornenyl resins contain benzylic type groups, as shown in the figures in reference 1. In contrast, the 316°C weight loss for non-benzylic/norbornenyl resins only competes with the benzylic/norbornenyl resins when the resins are based on 6F dianhydride (diacid-diester, HFDE) used with no diamine connecting group (as in paraphenylenediamine, PPDA). All the other non-benzylic/norbornenyl resins exhibit greater weight losses than either the benzylic type/norbornenyl resins or norbornenyl resins based on very stable monomer combinations as in HFDE/PPDA. What² was observed for the T_g and composite initial mechanical property portion² of the study was an almost linear correlation between T_g and molecular distance between the crosslinks, as shown in the figures in reference 2. An attempt was made to correlate T_g with composite initial mechanical properties (flexural strength and interlaminar shear strength). However, the scatter in mechanical strength data prevented obtaining as clear a correlation as was observed between T_g and changing the molecular distance between the crosslinks. Instead, only a range of composite mechanical properties was obtained at each test temperature studied (room temperature, 288 and 316°C) as shown below and in the figures in reference 2. Perhaps more importantly, what did become apparent during the

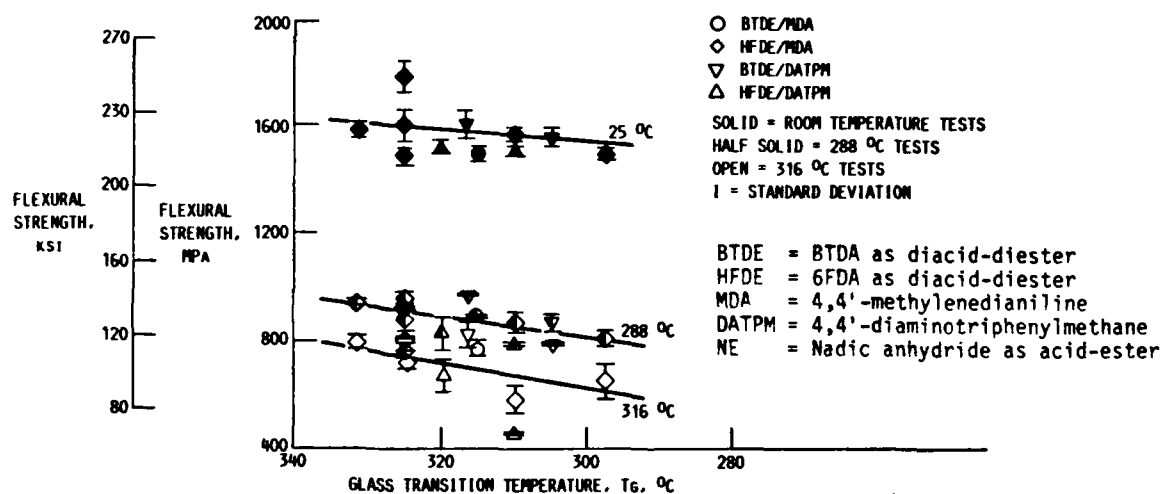
correlation study² was (a) that polymerization of monomeric reactant (PMR) methodology could be used to prepare composites from resins that contain a wide variety of monomer modifications, and (b) that these composites almost invariably provided satisfactory initial mechanical properties as long as the PMR resins formulated exhibited satisfactory processing flow.

References

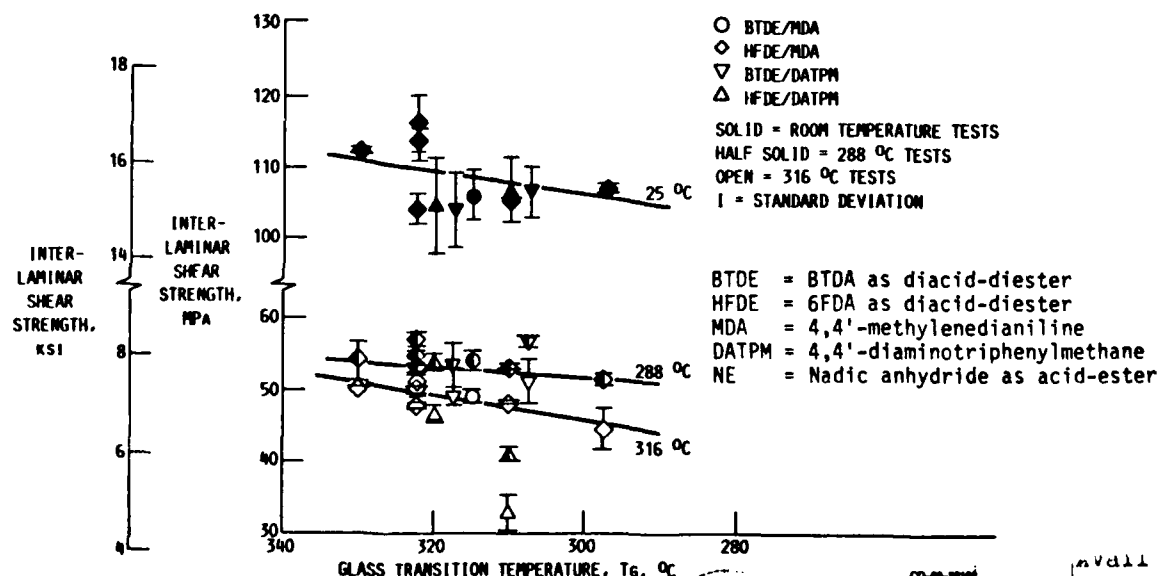
1. Alston, William B., "Structure-to-Property Relationships in Addition Cured Polymers. I. - Thermo-oxidative Stability of Norbornenyl Cured Polyimide Resins," American Chemical Society Polymer Preprints, Vol. 27, No. 2, September 1986, pp. 410-411. Also AVSCOM TR 86-C-35.
2. Alston, William B., "Structure-to-Property Relationships in Addition Cured Polymers. II. - Resin Tg and Composite Initial Mechanical Properties of Norbornenyl Cured Polyimide Resins," Proceedings of 18th International SAMPE Technical Conference, Seattle, WA, October 1986, pp. 1006-1014. Also AVSCOM TR 86-C-22, NASA TM 88794.

Tg - RESIN STRUCTURE/COMPOSITE MECHANICAL PROPERTY CORRELATION

FLEXURAL STRENGTH OF ALL BTDE AND HFDE/MDA AND DATPM/NE COMPOSITES



INTERLAMINAR SHEAR STRENGTH OF ALL BTDE AND HFDE/MDA AND DATPM/NE COMPOSITES



or	<input checked="" type="checkbox"/>
	<input type="checkbox"/>
	<input type="checkbox"/>
by Codes	
Special	
Dist	
A-1	

1. Report No. NASA TM-100791 AVSCOM TR-88-C-004		2. Government Accession No. ADA193 313		3. Recipient's Catalog No.	
4. Title and Subtitle Correlations of Norbornenyl Crosslinked Polyimide Resin Structures With Resin Thermo-Oxidative Stability, Resin Glass Transition Temperature and Composite Initial Mechanical Properties				5. Report Date 1988	
				6. Performing Organization Code	
7. Author(s) William B. Alston				8. Performing Organization Report No. E-3966	
				10. Work Unit No. 535-07-01	
9. Performing Organization Name and Address NASA Lewis Research Center Cleveland, Ohio 44135-3191 and Propulsion Directorate U.S. Army Aviation Research and Technology Activity—AVSCOM Cleveland, Ohio 44135-3191				11. Contract or Grant No.	
				13. Type of Report and Period Covered Technical Memorandum	
12. Sponsoring Agency Name and Address National Aeronautics and Space Administration Washington, D.C. 20546-0001 and U.S. Army Aviation Systems Command St. Louis, Mo. 63120-1798				14. Sponsoring Agency Code	
				15. Supplementary Notes Prepared for the Multidisciplinary Workshop on "Chemistry and Properties of High Performance Composites" sponsored by the American Chemical Society, Jackson, Wyoming, March 28-31, 1988.	
16. Abstract PMR (polymerization of monomeric reactants) methodology was used to prepare seventy different polyimide oligomeric resins and thirty different unidirectional graphite fiber/polyimide composites. Monomeric composition as well as chain length between sites of crosslinks were varied to examine their effects on resin thermo-oxidative stability and glass transition temperature (Tg) of the cured/postcured resins. A linear correlation of decreasing 316 °C resin weight loss/surface area versus (a) decreasing aliphatic content or (b) increasing benzylic/aliphatic stoichiometry ratio over a wide range of resin compositions was observed. An almost linear correlation of Tg versus molecular distance between the crosslinks was also observed. An attempt was made to correlate Tg with initial composite mechanical properties (flexural strength and interlaminar shear strength). However, the scatter in mechanical strength data prevented obtaining a clear correlation. Instead, only a range of composite mechanical properties was obtained at 25, 288 and 316 °C. Perhaps more importantly, what did become apparent during the correlation study was (a) that PMR methodology could be used to prepare composites from resins that contain a wide variety of monomer modifications, (b) that these composites almost invariably provided satisfactory initial mechanical properties as long as the resins formulated exhibited satisfactory processing flow, and (c) that PMR resins exhibited predictable rates of 316 °C weight loss/surface area based on their benzylic/aliphatic stoichiometry ratio.					
17. Key Words,(Suggested by Author(s)) Glass transition temperature, Tg; Composite mechanical properties; Polyimide; PMR-15; Thermo-oxidative stability; Graphite fiber composites.			18. Distribution Statement Unclassified—Unlimited Subject Category 27		
19. Security Classif. (of this report) Unclassified		20. Security Classif. (of this page) Unclassified		21. No of pages	22. Price*

END

DATE

FILMED

DTIC

July 88