

AD-A194 934

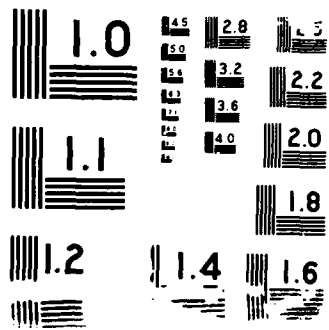
PRIME CONTRACT AWARDS BY STATE FIRST HALF FISCAL YEAR  
1988(U) WASHINGTON HEADQUARTERS SERVICES (DOD) DC  
DIRECTORATE FOR INFORMATION OPERATIONS AND REPORTS  
1988 DIOR/P09-88/01 F/G 5/1

1/1

UNCLASSIFIED

NL





DTIC FILE COPY

P09

12

AD-A194 934

# Department of Defense PRIME CONTRACT AWARDS BY STATE

## First Half Fiscal Year 1988



DTIC  
 SELECTED  
 JUL 1 1 1988  
 S a D

DISTRIBUTION STATEMENT A  
 Approved for public release  
 Distribution Unlimited

# PRIME CONTRACT AWARDS BY STATE

First Half Fiscal Year 1988



Accession For	
NTIS CRA&I	<input checked="" type="checkbox"/>
DTIC TAB	<input type="checkbox"/>
Unannounced	<input type="checkbox"/>
Justification	
by	
Distribution	
Availability Codes	
Dist	Avail and/or Ordeal
A-1	

Department of Defense  
Washington Headquarters Services  
Directorate for Information  
Operations and Reports

~~For sale by the Superintendent of Documents, U.S. Government Printing Office, Washington, D.C. 20402~~

DTIC and NTIS identification number for this publication is DIOR/P09-88/01

## FOREWORD

*Prime Contract Awards by State* is published semiannually.

This report provides information on Department of Defense procurement actions. Data are broken down into three categories:

- 1) Total U.S. Actions;
- 2) Actions Not Distributed by State; and
- 3) Total State Actions, which is further divided into separate totals for each state.

## TABLE OF CONTENTS

Introduction. . . . . 1

Tables:

Table 1. Net Value and Percent Distribution of DoD Procurement  
Actions, by State: First Half FY 1988, First Half FY 1987,  
and Second Quarters FY 1988 and FY 1987 . . . . . 3

Table 2. Net Value and Percent Distribution of DoD Military  
Procurement Actions, by State: First Half FY 1988, First Half  
FY 1987, and Second Quarters FY 1988 and FY 1987. . . . . 4

Table 3. Net Value and Percent Distribution of DoD Military  
Procurement Actions, by State, According to Defense Component:  
First Half FY 1988. . . . . 5

## INTRODUCTION

*Prime Contract Awards by State* provides a wide variety of information on all Department of Defense (DoD) procurement actions. Both military and civil functions (i.e., U.S. Army Corps of Engineers--Civil Works) procurements are represented. The data are presented by state and include the net value of procurements awarded to each state as well as each state's percentage of the total for all state procurements.

The total net value of procurement actions for the first half of Fiscal Year (FY) 1988 and FY 1987 are shown for all of DoD in Table 1 and for its military components only in Table 2. These tables also provide, for comparison purposes, data for the second quarters of FY 1988 and FY 1987. The total net value of military procurement actions for the first half of FY 1988 (presented in Table 2) are displayed according to defense component in Table 3.

## NOTES ON COVERAGE

Data in this report reflect the net value of debit and credit procurement actions over \$25,000, i.e., terminations, price changes, or other downward adjustments which are deducted from a contractor's total award amount, while modifications and other positive adjustments are treated as increases. Procurement actions include definitive contracts; the obligated portions of letter contracts; and job orders, task orders, delivery orders, or any other orders against existing contracts. Contracts for research and development, services, construction, and supplies and equipment are included. Contracts awarded by DoD to other Government agencies as intragovernmental orders and foreign military sales (reimbursable sales to foreign governments) are also included.

The data base from which information for this report is collected does not include data on those parts of indefinite quantity contracts (except for petroleum products) that have not been translated into specific orders to businesses, those contracts that have not yet become mutually binding agreements between the Government and the contractor, or prime contracts awarded by other U.S. government agencies and financed with DoD funds.

The previous first half figures appearing in this publication differ from the originally published figures. This is due to changes received during the second half of the fiscal year for records originally submitted in the first half and represents the most accurate data available for the previous first half.

## Totals

The United States total in the tables includes all contracts awarded for work performed in the United States. The United States as used here includes the 50 states, the District of Columbia and the outlying areas of the United States. The U.S. outlying areas include American Samoa, the Federated States of Micronesia, Guam, the Marshall Islands, Northern Mariana Islands, Palau, Puerto Rico, the U.S. Minor Outlying Islands, and the Virgin Islands of the U.S.

The subtotal "NOT DISTRIBUTED BY STATE" includes all contract actions of \$25,000 or less for performance in the United States. This subtotal also includes all contract actions, regardless of size, for performance in the U.S. outlying areas and all contract actions for performance in classified locations.

State subtotals include the net value of procurement actions over \$25,000 awarded to each state and the District of Columbia.

## Location of Contracts

Contract work is not necessarily performed in the state where the contract is awarded. Most manufacturing contracts have been attributed to the contractor's location where the product will be processed and assembled. When contract work has been performed at more than one plant, the contract has been attributed to the location where the largest dollar amount of work was produced. Both construction and service contracts have been attributed to the state where the work is to be performed. Contracts for transportation and communications services have been attributed to the state where the contractor's home office is located. For purchases from wholesale or other distribution firms, the location is the contractor's business address.

## HIGHLIGHTS

The total United States prime contract awards for the first half of Fiscal Year 1988 totaled \$60,475.6 million, a decrease of \$6,301.7 million or -9.4 percent less than the first half of Fiscal Year 1987. The state that showed the largest dollar amount of change was New York with a decrease of \$1,872.7 million or -38.5 percent. The state with the second largest dollar amount of change was Georgia with a decrease of \$1,868.5 million or -81.1 percent. It should be noted that Mississippi showed a net increase of 347.1 percent in DoD procurement awards during this report period, which was the largest percentage change among the states (including the District of Columbia).

Thirty-one states (including the District of Columbia) showed a decrease with a median of -\$100.3 million while twenty states showed an increase with a median of \$46.1 million. The average change for all the states was -\$148.6 million with a median of -\$19.1 million. The ten states showing the largest amount of procurement award dollar change for the first half of FY 1988 as compared to the first half of FY 1987 are as follows:

(AMOUNTS IN THOUSANDS OF DOLLARS)

STATE	FIRST HALF FY 1988 AMOUNT	AMOUNT OF INCREASE OR DECREASE FROM FIRST HALF FY 1987	PERCENT OF CHANGE FROM FIRST HALF FY 1987
NEW YORK	\$ 2,992,445	\$ -1,872,732	-38.5
GEORGIA	436,326	-1,868,535	-81.1
MASSACHUSETTS	3,722,359	-1,649,518	-30.7
VIRGINIA	2,143,192	-1,516,107	-41.4
MISSISSIPPI	1,862,443	+1,445,837	+347.1
CALIFORNIA	9,629,013	-1,284,053	-11.8
TEXAS	4,782,808	+619,495	+14.9
NEW JERSEY	1,607,402	+591,149	+58.2
INDIANA	653,851	-483,409	-42.5
MARYLAND	1,542,643	-395,691	-20.4

**Table 1. Net Value and Percent Distribution of DoD Procurement Actions, by State: First Half FY 1988, First Half FY 1987, and Second Quarters FY 1988 and FY 1987<sup>1,2</sup>**

(Amounts in Thousands)

STATE	FISCAL YEAR TO DATE				THREE MONTH PERIOD			
	1988 (OCT 87-MAR 88)		1987 (OCT 86-MAR 87)		FISCAL YEAR 1988 (JAN-MAR 1988)		FISCAL YEAR 1987 (JAN-MAR 1987)	
	AMOUNT	PERCENT	AMOUNT	PERCENT	AMOUNT	PERCENT	AMOUNT	PERCENT
TOTAL, U.S.	\$60,475,645		\$66,777,382		\$33,832,665		\$38,489,863	
NOT DISTRIBUTED BY STATE	6,797,402		5,522,081		3,768,723		3,210,001	
STATE TOTALS	53,678,243	100.0	61,255,301	100.0	30,063,942	100.0	35,279,862	100.0
Alabama	766,195	1.4	726,417	1.2	421,928	1.4	382,148	1.1
Alaska	138,048	0.3	238,301	0.4	27,694	0.1	113,388	0.3
Arizona	1,319,705	2.5	1,692,044	2.8	455,848	1.5	517,694	1.5
Arkansas	547,000	1.0	553,431	0.9	526,681	1.8	261,506	0.7
California	9,629,013	17.9	10,913,066	17.8	5,835,911	19.4	6,770,953	19.2
Colorado	1,538,695	2.9	1,543,641	2.5	524,741	1.7	928,816	2.6
Connecticut	2,247,603	4.2	2,248,719	3.7	1,569,430	5.2	1,350,059	3.8
Delaware	129,473	0.2	49,213	0.1	115,442	0.4	13,787	*
District of Columbia	373,115	0.7	468,737	0.8	118,925	0.4	176,591	0.5
Florida	3,060,869	5.7	2,857,424	4.7	1,461,326	4.9	1,054,628	3.0
Georgia	436,326	0.8	2,304,861	3.8	227,278	0.8	1,634,026	4.6
Hawaii	148,333	0.3	183,104	0.3	35,075	0.1	96,483	0.3
Idaho	17,865	*	24,441	*	10,334	*	8,582	*
Illinois	516,944	1.0	786,449	1.3	274,604	0.9	438,848	1.2
Indiana	653,851	1.2	1,137,260	1.9	259,821	0.9	854,398	2.4
Iowa	155,238	0.3	102,903	0.2	80,085	0.3	84,851	0.2
Kansas	411,409	0.8	548,418	0.9	148,006	0.5	161,480	0.5
Kentucky	126,521	0.2	185,304	0.3	76,437	0.3	81,378	0.2
Louisiana	508,788	0.9	730,202	1.2	379,599	1.3	526,058	1.5
Maine	336,202	0.6	78,041	0.1	301,802	1.0	49,162	0.1
Maryland	1,542,643	2.9	1,938,334	3.2	846,980	2.8	1,140,770	3.2
Massachusetts	3,722,359	6.9	5,371,877	8.8	1,611,666	5.4	3,679,313	10.4
Michigan	396,580	0.7	677,614	1.1	190,125	0.6	429,574	1.2
Minnesota	748,247	1.4	812,068	1.3	580,063	1.9	570,371	1.6
Mississippi	1,862,443	3.5	416,606	0.7	1,707,087	5.7	283,601	0.8
Missouri	2,205,781	4.1	2,087,229	3.4	1,308,173	4.4	731,234	2.1
Montana	30,150	0.1	27,285	*	22,451	0.1	8,220	*
Nebraska	117,155	0.2	105,068	0.2	60,333	0.2	42,078	0.1
Nevada	114,187	0.2	112,475	0.2	20,546	0.1	53,234	0.2
New Hampshire	89,348	0.2	121,796	0.2	42,511	0.1	69,174	0.2
New Jersey	1,607,402	3.0	1,016,253	1.7	1,263,663	4.2	555,290	1.6
New Mexico	295,938	0.6	267,426	0.4	133,074	0.4	159,655	0.5
New York	2,992,445	5.6	4,885,177	7.9	1,349,224	4.5	2,708,815	7.7
North Carolina	486,169	0.9	472,195	0.8	269,705	0.9	251,101	0.7
North Dakota	27,487	0.1	56,011	0.1	12,266	*	35,035	0.1
Ohio	2,135,051	4.0	1,785,575	2.9	1,016,211	3.4	1,349,244	3.8
Oklahoma	207,714	0.4	273,796	0.4	84,561	0.3	86,939	0.2
Oregon	106,448	0.2	125,554	0.2	69,384	0.2	52,115	0.1
Pennsylvania	1,968,679	3.7	2,127,964	3.5	1,122,316	3.7	1,043,653	3.0
Rhode Island	172,326	0.3	183,528	0.3	112,118	0.4	98,577	0.3
South Carolina	172,726	0.3	261,933	0.4	96,957	0.3	153,787	0.4
South Dakota	16,057	*	15,956	*	8,498	*	6,723	*
Tennessee	626,228	1.2	496,413	0.8	442,045	1.5	311,037	0.9
Texas	4,782,808	8.9	4,163,313	6.8	2,472,803	8.2	2,066,052	5.9
Utah	346,775	0.6	367,385	0.6	226,258	0.8	241,139	0.7
Vermont	57,916	0.1	32,980	0.1	30,907	0.1	23,126	0.1
Virginia	2,143,192	4.0	3,659,299	6.0	1,098,166	3.7	2,669,776	7.6
Washington	1,313,878	2.4	1,701,537	2.8	777,627	2.6	724,330	2.1
West Virginia	84,468	0.2	51,745	0.1	65,835	0.2	30,815	0.1
Wisconsin	239,283	0.4	293,306	0.5	168,829	0.6	209,287	0.6
Wyoming	5,127	*	-4,273	*	2,593	*	-9,050	*

1. For clarification on the limitations and conditions of coverage, see the introduction.

2. All figures include civil functions procurement actions.

Note: An asterisk in the percent column represents a figure of less than 0.05 percent. Percentages may not add up due to rounding.

**Table 2. Net Value and Percent Distribution of DoD Military Procurement Actions, by State: First Half FY 1988, First Half FY 1987, and Second Quarters FY 1988 and FY 1987<sup>1</sup>**

(Amounts in Thousands)

STATE	FISCAL YEAR TO DATE				THREE MONTH PERIOD			
	1988 (OCT 87-MAR 88)		1987 (OCT 86-MAR 87)		FISCAL YEAR 1988 (JAN-MAR 1988)		FISCAL YEAR 1987 (JAN-MAR 1987)	
	AMOUNT	PERCENT	AMOUNT	PERCENT	AMOUNT	PERCENT	AMOUNT	PERCENT
TOTAL U.S.	\$59,906,593		\$65,980,652		\$33,412,804		\$38,116,591	
NOT DISTRIBUTED BY STATE	6,683,491		5,389,474		3,690,018		3,147,973	
STATE TOTALS	53,223,108	100.0	60,591,178	100.0	29,722,786	100.0	34,968,618	100.0
Alabama	751,706	1.4	707,709	1.2	416,550	1.4	369,449	1.1
Alaska	136,758	0.3	225,862	0.4	26,483	0.1	112,857	0.3
Arizona	1,319,672	2.5	1,686,892	2.8	455,815	1.5	517,445	1.5
Arkansas	533,027	1.0	533,791	0.9	516,210	1.7	254,552	0.7
California	9,603,099	18.0	10,884,036	18.0	5,825,953	19.6	6,761,185	19.3
Colorado	1,538,579	2.9	1,543,099	2.5	524,625	1.8	928,527	2.7
Connecticut	2,246,762	4.2	2,248,426	3.7	1,568,589	5.3	1,350,033	3.9
Delaware	126,280	0.2	40,998	0.1	114,497	0.4	11,879	*
District of Columbia	372,127	0.7	460,456	0.8	118,104	0.4	175,006	0.5
Florida	3,049,597	5.7	2,829,806	4.7	1,456,957	4.9	1,039,841	3.0
Georgia	417,930	0.8	2,285,189	3.8	210,093	0.7	1,621,024	4.6
Hawaii	148,333	0.3	183,058	0.3	35,075	0.1	96,516	0.3
Idaho	17,619	*	15,181	*	10,334	*	8,177	*
Illinois	489,306	0.9	742,457	1.2	255,440	0.9	410,461	1.2
Indiana	652,907	1.2	1,136,888	1.9	258,877	0.9	854,437	2.4
Iowa	152,213	0.3	100,737	0.2	77,163	0.3	84,131	0.2
Kansas	408,667	0.8	545,390	0.9	145,938	0.5	160,730	0.5
Kentucky	124,637	0.2	174,084	0.3	74,605	0.3	77,521	0.2
Louisiana	446,768	0.8	615,789	1.0	317,667	1.1	473,876	1.4
Maine	336,177	0.6	77,651	0.1	301,777	1.0	48,772	0.1
Maryland	1,530,288	2.9	1,926,853	3.2	834,874	2.8	1,136,684	3.3
Massachusetts	3,719,301	7.0	5,366,930	8.9	1,608,680	5.4	3,677,522	10.5
Michigan	392,675	0.7	671,306	1.1	186,412	0.6	427,031	1.2
Minnesota	741,251	1.4	800,847	1.3	574,715	1.9	565,883	1.6
Mississippi	1,846,890	3.5	387,011	0.6	1,695,141	5.7	268,358	0.8
Missouri	2,188,035	4.1	2,064,949	3.4	1,297,745	4.4	717,703	2.1
Montana	29,642	0.1	26,955	*	22,131	0.1	8,192	*
Nebraska	114,862	0.2	103,526	0.2	58,442	0.2	41,049	0.1
Nevada	114,100	0.2	112,380	0.2	20,511	0.1	53,234	0.2
New Hampshire	89,318	0.2	121,666	0.2	42,481	0.1	69,174	0.2
New Jersey	1,602,713	3.0	1,001,503	1.7	1,260,275	4.2	542,733	1.6
New Mexico	295,167	0.6	263,779	0.4	132,303	0.4	157,952	0.5
New York	2,987,671	5.6	4,860,459	8.0	1,346,963	4.5	2,706,604	7.7
North Carolina	479,682	0.9	463,763	0.8	263,218	0.9	249,281	0.7
North Dakota	26,982	0.1	55,036	0.1	11,830	*	34,383	0.1
Ohio	2,126,292	4.0	1,769,082	2.9	1,009,164	3.4	1,337,573	3.8
Oklahoma	201,808	0.4	264,284	0.4	79,493	0.3	84,258	0.2
Oregon	90,563	0.2	91,031	0.2	55,456	0.2	32,511	0.1
Pennsylvania	1,949,908	3.7	2,103,692	3.5	1,106,314	3.7	1,033,113	3.0
Rhode Island	171,328	0.3	183,268	0.3	111,151	0.4	98,506	0.3
South Carolina	168,196	0.3	258,333	0.4	93,400	0.3	151,718	0.4
South Dakota	15,424	*	14,233	*	8,058	*	6,652	*
Tennessee	613,653	1.2	487,676	0.8	429,470	1.4	305,749	0.9
Texas	4,753,167	8.9	4,120,540	6.8	2,452,255	8.3	2,041,264	5.8
Utah	346,775	0.7	367,385	0.6	226,258	0.8	241,139	0.7
Vermont	57,873	0.1	32,893	0.1	30,864	0.1	23,087	0.1
Virginia	2,127,265	4.0	3,639,962	6.0	1,095,046	3.7	2,653,844	7.6
Washington	1,289,850	2.4	1,668,848	2.8	767,066	2.6	719,089	2.1
West Virginia	38,261	0.1	44,516	0.1	23,208	0.1	28,276	0.1
Wisconsin	236,877	0.4	285,880	0.5	166,517	0.6	208,906	0.6
Wyoming	5,127	*	-4,897	*	2,593	*	-9,269	*

<sup>1</sup> For clarification on the limitations and conditions of coverage, see the introduction.  
 Note: An asterisk in the percent column represents a figure of less than 0.05 percent. Percentages may not add up due to rounding.

**Table 3. Net Value and Percent Distribution of DoD Military Procurement Actions, by State, According to Defense Component:  
First Half FY 1988 <sup>1</sup>**

(Amounts in Thousands)

STATE	TOTAL <sup>2</sup>		ARMY	NAVY	AIR FORCE	DEFENSE LOGISTICS AGENCY
	AMOUNT	PERCENT				
TOTAL, U.S.	\$59,906,599		\$12,097,243	\$22,974,374	\$19,688,857	\$4,499,520
NOT DISTRIBUTED BY STATE	6,683,491		1,526,700	1,646,940	2,451,985	974,147
STATE TOTALS	53,223,108	100.0	10,570,543	21,327,434	17,236,872	3,525,373
Alabama	751,706	1.4	407,395	87,207	74,190	179,309
Alaska	136,758	0.3	34,214	1,898	93,531	7,084
Arizona	1,319,672	2.5	741,112	193,693	370,174	14,002
Arkansas	533,027	1.0	285,804	177,007	38,877	31,339
California	9,603,999	18.0	1,083,928	4,131,405	4,057,597	190,588
Colorado	1,538,579	2.9	106,593	195,562	1,200,725	13,291
Connecticut	2,246,762	4.2	546,735	1,489,842	179,349	30,778
Delaware	126,280	0.2	3,391	4,791	7,670	110,386
District of Columbia	372,127	0.7	29,397	256,074	43,725	3,223
Florida	3,049,597	5.7	563,926	422,934	1,946,681	110,405
Georgia	417,930	0.8	161,389	43,406	144,086	67,863
Hawaii	148,333	0.3	24,058	38,709	51,960	31,461
Idaho	17,619	*	3,337	2,055	5,230	6,997
Illinois	489,306	0.9	110,842	90,543	163,519	119,415
Indiana	652,907	1.2	362,574	117,335	113,959	58,815
Iowa	152,213	0.3	66,693	20,955	40,149	24,416
Kansas	408,667	0.8	118,875	39,881	236,104	13,778
Kentucky	124,637	0.2	61,802	8,956	7,691	45,936
Louisiana	446,768	0.8	95,851	56,044	68,784	226,055
Maine	336,177	0.6	4,174	305,249	4,774	21,980
Maryland	1,530,288	2.9	191,533	856,731	410,774	30,172
Massachusetts	3,719,301	7.0	1,344,349	1,353,308	896,083	97,916
Michigan	392,675	0.7	147,447	52,397	142,163	49,032
Minnesota	741,251	1.4	184,219	431,072	75,197	49,208
Mississippi	1,846,890	3.5	34,182	1,656,517	43,529	112,305
Missouri	2,188,035	4.1	272,059	936,472	934,931	38,502
Montana	29,642	0.1	19,938	1,121	8,319	264
Nebraska	114,862	0.2	28,475	1,409	62,291	19,588
Nevada	114,100	0.2	21,204	5,708	87,531	1,699
New Hampshire	89,318	0.2	18,588	41,400	22,132	5,547
New Jersey	1,602,713	3.0	246,261	1,030,998	200,019	123,470
New Mexico	295,167	0.6	97,145	27,930	158,480	2,013
New York	2,987,671	5.6	148,510	1,973,135	631,541	194,176
North Carolina	479,682	0.9	93,025	248,546	48,019	85,868
North Dakota	26,982	0.1	4,056	-505	22,489	942
Ohio	2,126,292	4.0	743,064	160,699	1,112,692	108,180
Oklahoma	201,808	0.4	54,491	9,590	128,825	8,863
Oregon	80,563	0.2	7,952	20,951	39,360	10,215
Pennsylvania	1,949,908	3.7	442,863	1,095,936	244,230	162,282
Rhode Island	171,328	0.3	1,792	148,889	2,216	14,591
South Carolina	168,196	0.3	33,291	57,583	18,735	49,061
South Dakota	15,424	*	1,089	53	9,927	4,355
Tennessee	613,653	1.2	185,786	152,609	215,317	59,891
Texas	4,753,167	8.9	584,843	1,371,415	1,947,317	841,558
Utah	346,775	0.7	45,333	96,661	190,020	13,132
Vermont	57,873	0.1	11,622	21,204	22,792	2,255
Virginia	2,137,265	4.0	460,577	1,221,104	241,272	53,015
Washington	1,289,850	2.4	210,610	614,301	444,216	18,850
West Virginia	38,261	0.1	16,003	9,335	6,486	6,437
Wisconsin	236,877	0.4	107,814	37,294	16,976	54,313
Wyoming	5,127	*	332	25	4,218	552

<sup>1</sup> For clarification on the limitations and conditions of coverage, see the introduction.

<sup>2</sup> Total includes all departments shown, plus other Defense agencies.

Note: An asterisk in the percent column represents a figure of less than 0.05 percent. Percentages may not add up due to rounding.

END

DATE

FILMED

8-88

DTIC