

AD-A195 344

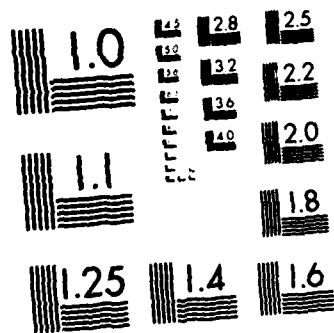
MEASUREMENT OF VERTICAL VELOCITY USING CLEAR-AIR  
DOPPLER RADAR: (I) CONTROL DATA CORP MINNEAPOLIS MN  
METEOROLOGICAL RESEARCH CENTER 1 E UANZANDI ST AL  
25 MAR 88 AFOSR-IA-88-0495 F49620-86-C-0027 P/C 17/9

1/1

UNCLASSIFIED

NL

END  
DATE  
FILMED  
9 8



MICROCOPY RESOLUTION TEST CHART  
NATIONAL BUREAU OF STANDARDS-1963-A

DOCUMENTATION PAGE

Form Approved  
OMB No. 0704-0188

**AD-A195 344**

4d. DECLASSIFICATION / DOWNGRADING SCHEDULE		1b. RESTRICTIVE MARKINGS	
4. PERFORMING ORGANIZATION REPORT NUMBER(S)		3. DISTRIBUTION / AVAILABILITY OF REPORT DISTRIBUTION UNLIMITED / APPROVED FOR PUBLIC RELEASE.	
6a. NAME OF PERFORMING ORGANIZATION Meteorology Research Center Control Data Corporation		6b. OFFICE SYMBOL (if applicable)	7a. NAME OF MONITORING ORGANIZATION AFOSR/NC
6c. ADDRESS (City, State, and ZIP Code) 2800 E. Old Shakopee Road Minneapolis MN 55420		7b. ADDRESS (City, State, and ZIP Code) Building 410 Bolling AFB, DC 20332-6448	
8a. NAME OF FUNDING / SPONSORING ORGANIZATION AFOSR	8b. OFFICE SYMBOL (if applicable) NC	9. PROCUREMENT INSTRUMENT IDENTIFICATION NUMBER Contract No. F49620-86-C-0027	
8c. ADDRESS (City, State, and ZIP Code) Building 410 Bolling AFB, D.C. 20332		10. SOURCE OF FUNDING NUMBERS	WORK UNIT ACCESSION NO.
		PROGRAM ELEMENT NO. 61102F	PROJECT NO. 2310
		TASK NO. A1	
11. TITLE (Include Security Classification) Measurement Of Vertical Velocity Using Clear-Air Doppler Radars			
12. PERSONAL AUTHOR(S) T.E. VanZandt, J.L. Green, G.D. Nastrom, K.S. Gage, W.L. Clark, and J.M. Warnock			
13a. TYPE OF REPORT Reprint	13b. TIME COVERED FROM 3/23/88 TO 3/23/88	14. DATE OF REPORT (Year, Month, Day) 88/3/23	15. PAGE COUNT 2
16. SUPPLEMENTARY NOTATION Presented at the Symposium on Lower Tropospheric Profiling: Needs and Technologies, May 31-June 3, 1988, Boulder, Colorado			
17. COSATI CODES		18. SUBJECT TERMS (Continue on reverse if necessary and identify by block number)	
FIELD	GROUP	SUB-GROUP	
19. ABSTRACT (Continue on reverse if necessary and identify by block number)  SEE BACK			
20. DISTRIBUTION / AVAILABILITY OF ABSTRACT <input checked="" type="checkbox"/> UNCLASSIFIED/UNLIMITED <input checked="" type="checkbox"/> SAME AS RPT. <input type="checkbox"/> DTIC USERS		21. ABSTRACT SECURITY CLASSIFICATION UNCLASSIFIED	
22a. NAME OF RESPONSIBLE INDIVIDUAL Lt Col James P. Koermer, USAF		22b. TELEPHONE (Include Area Code) (202) 767-4960	22c. OFFICE SYMBOL NC

DTIC  
ELECTE  
S MAY 03 1988 D  
D

W

Since the development of the clear-air Doppler radar technique (also called the wind-profiling or MST-radar technique) at Jicamarca, Peru (Woodman and Guillen, 1974), and Sunset, Colorado (Green et al., 1975), it has been applied to a wide range of meteorological problems (see, e.g., Liu and Kato, 1985). Despite this rapid progress, research on some important problems has been frustrated by the fact that most clear-air Doppler radars are near mountains. The resulting orographic effects act as geophysical noise on observations of other processes. These effects are especially serious for studies of the vertical component of motion. For example, Ecklund et al. (1982) found that when the wind flowed over the mountains, the variance of the vertical velocity was strongly correlated with the wind speed. Nastrom et al. (1985) found that they could extract the small synoptic-scale vertical velocity only when the horizontal wind was not from the direction of nearby mountains. Following their suggestion, we have constructed a new clear-air Doppler radar, called the Flatland radar, in very flat terrain near Champaign-Urbana, Illinois. We find that the vertical velocity field over very flat terrain is indeed quite different from that near rough terrain, and we present observations that suggest that the vertical velocity due to other processes, such as synoptic-scale motions and gravity waves, can be studied by clear-air Doppler radars in very flat terrain.

X

# AFOSR-TR- 88-0495

## MEASUREMENT OF VERTICAL VELOCITY USING CLEAR-AIR DOPPLER RADARS

by

T.E. VanZandt,<sup>1</sup> J.L. Green,<sup>1</sup> G.D. Nastrom,<sup>2</sup> K.S. Gage,<sup>1</sup> W.L. Clark,<sup>1</sup> and J.M. Warnock<sup>1</sup>

<sup>1</sup>Aeronomy Laboratory, National Oceanic and Atmospheric Administration, Boulder, CO 80303

<sup>2</sup>Meteorology Research, Control Data Corporation, Minneapolis, MN 55440

### 1. INTRODUCTION

Since the development of the clear-air Doppler radar technique (also called the wind-profiling or MST-radar technique) at Jicamarca, Peru (Woodman and Guillen, 1974), and Sunset, Colorado (Green et al., 1975), it has been applied to a wide range of meteorological problems (see, e.g., Liu and Kato, 1985). Despite this rapid progress, research on some important problems has been frustrated by the fact that most clear-air Doppler radars are near mountains. The resulting orographic effects act as geophysical noise on observations of other processes. These effects are especially serious for studies of the vertical component of motion. For example, Ecklund et al. (1982) found that when the wind flowed over the mountains, the variance of the vertical velocity was strongly correlated with the wind speed. Nastrom et al. (1985) found that they could extract the small synoptic-scale vertical velocity only when the horizontal wind was not from the direction of nearby mountains. Following their suggestion, we have constructed a new clear-air Doppler radar, called the Flatland radar, in very flat terrain near Champaign-Urbana, Illinois. We find that the vertical velocity field over very flat terrain is indeed quite different from that near rough terrain, and we present observations that suggest that the vertical velocity due to other processes, such as synoptic-scale motions and gravity waves, can be studied by clear-air Doppler radars in very flat terrain.

### 2. EXPERIMENTAL DESIGN

The Flatland Radar is located at 40.5°N, 88.4°W, 212m above mean sea level (MSL), about 8km west of the Champaign-Urbana Airport. The radar operates at a frequency of 49.8MHz (wavelength, 6.02m), with a pulse length and the range resolution of 750m. The 3dB, two-way beamwidth is 3.2°. To minimize contamination of vertical velocity measurements by horizontal winds, the antenna was carefully leveled to within 0.02° from the vertical. The Doppler spectra have a velocity resolution of  $5\text{ cm s}^{-1}$  and an unaliased velocity range of  $\pm 3.2\text{ ms}^{-1}$ . The Flatland radar has been measuring the vertical velocity every 153 seconds almost continuously since March 2, 1987. The second phase of the Flatland radar, with steerable oblique beams to measure both components of the horizontal wind, will be implemented in early 1988. A more detailed description of the radar and some preliminary results are given in Green et al., 1988.

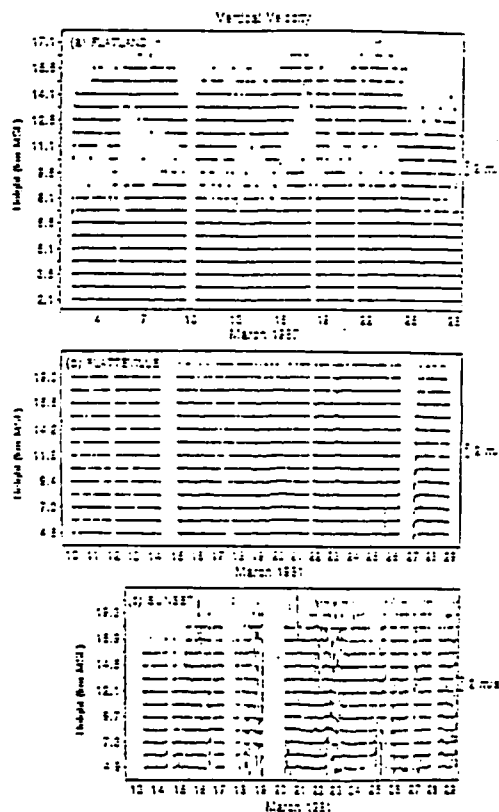


Figure 1. Radar vertical velocities averaged over fifteen-minute periods: (a) Flatland radar during March 1987; (b) Platteville radar during March 1981. (Panels (b) and (c) are from Ecklund et al., 1982.)

### 3. RESULTS

Figure 1 presents time series of 15-minute averages of the vertical velocity in each range gate of three radars, each located in a different kind of terrain. Panel (a) is from the Flatland radar and panels (b) and (c) are from the Platteville and Sunset radars in Colorado, 80 and 16km east of the crest of the Front Range ( $\sim 4000\text{m MSL}$ ), respectively. In the Flatland time series the smaller upper height limit and the data gaps around 10km are thought to be due to a smaller signal-to-noise ratio.

