

DTIC FILE COPY

①

SCT SYSTEMS CONTROL TECHNOLOGY, INC.

2300 GENG ROAD P.O. BOX 10180 PALO ALTO, CALIFORNIA 94303 0888 (415) 494 2233

AD-A220 502

CORPS HELICOPTER ATTACK PLANNING SYSTEM
(CHAPS)

STUDENT'S TRAINING COURSE GUIDE

Prepared For:

Department of the Army
Joint Tactical Fusion Program
1500 Planning Research Drive
McLean, VA 22102-5099

DTIC
ELECTE
APR 11 1990
S B D
Co

Contract Number:
F6154688D0003


6

Prepared By:

Systems Control Technology, Inc.
Mission Effectiveness Department

*Original contains color
plates: All DTIC reproductions
will be in black and
white*

Approved By:



Peter D. Bernstein
CHAPS Project Manager

"The views and conclusions contained in this document are those of the authors,
and should not be interpreted as necessarily representing the official policies,
either expressed or implied, of the U.S. Government."

DISTRIBUTION STATEMENT A

Approved for public release;
Distribution Unlimited

90 04 10 062

UNCLASSIFIED

SECURITY CLASSIFICATION OF THIS PAGE

7

REPORT DOCUMENTATION PAGE

1a. REPORT SECURITY CLASSIFICATION UNCLASSIFIED		1b. RESTRICTIVE MARKINGS	
2a. SECURITY CLASSIFICATION AUTHORITY NA		3. DISTRIBUTION/AVAILABILITY OF REPORT UNLIMITED	
2b. DECLASSIFICATION/DOWNGRADING SCHEDULE NA			
4. PERFORMING ORGANIZATION REPORT NUMBER(S) NA		5. MONITORING ORGANIZATION REPORT NUMBER(S) NA	
6a. NAME OF PERFORMING ORGANIZATION SYSTEMS CONTROL TECHNOLOGY, INC MISSION EFFECTIVENESS DEPARTMENT		6b. OFFICE SYMBOL (if applicable)	7a. NAME OF MONITORING ORGANIZATION HQ USAFE/ DIRECTORATE OF OPERATIONS ANALYSIS
6c. ADDRESS (City, State, and ZIP Code) 2300 GENG ROAD PALO ALTO CA 94303-0888		7b. ADDRESS (City, State, and ZIP Code) HQ USAFE/DOA APO NY 09094-5001	
8a. NAME OF FUNDING/SPONSORING ORGANIZATION DEPARTMENT OF THE ARMY	8b. OFFICE SYMBOL (if applicable) JTF-PMO	9. PROCUREMENT INSTRUMENT IDENTIFICATION NUMBER FG154688D003	
8c. ADDRESS (City, State, and ZIP Code) 1500 PLANNING RESEARCH DRIVE MCLEAN, VA 22102-5099		10. SOURCE OF FUNDING NUMBERS	
		PROGRAM ELEMENT NO.	PROJECT NO.
		TASK NO.	WORK UNIT ACCESSION NO.
11. TITLE (Include Security Classification) CORPS HELICOPTER ATTACK PLANNING SYSTEM (CHAPS) STUDENT'S TRAINING COURSE GUIDE			
12. PERSONAL AUTHOR(S)			
13a. TYPE OF REPORT FINAL	13b. TIME COVERED FROM 870915 TO 891001	14. DATE OF REPORT (Year, Month, Day) UNDATED	15. PAGE COUNT 91
16. SUPPLEMENTARY NOTATION			
17. COSATI CODES		18. SUBJECT TERMS (Continue on reverse if necessary and identify by block number)	
FIELD	GROUP	SUB-GROUP	
15	03		AUTOMATED PLANNING SYSTEM
01	03	01	
19. ABSTRACT (Continue on reverse if necessary and identify by block number)			
<p>This document was developed as a hands-on student training manual for the US Army's CORPS Helicopter Attack Planning System (CHAPS). There are five manuals for CHAPS. CHAPS was developed by Systems Control Technology, Inc, Palo Alto, CA for the Joint Tactical Fusion Program Management Office (JTFFMO). CHAPS is a derivative of USAFE's Force Level Automated Planing System (FLAPS) and was extensively modified to incorporate US Army attack helicopters. The CHAPS program consists of two major stand-alone software programs: the SUPR program which defines a 3-D real-world statespace area where the helicopters would operate; and CHAPS which provides survivability estimates for attacking helicopters given a specific battlefield scenario and real-world threat. This manual compliments the CHAPS Instructor/Lesson Guide and Positional Handbook by describing CHAPS' basic operating commands that are used with the JTFFMO's Portable Analyst Workstation (PAWS), presenting actual color screen output displays, and providing examples of CHAPS output messages. This document provides an excellent pictorial of CHAPS' output capabilities.</p>			
20. DISTRIBUTION/AVAILABILITY OF ABSTRACT <input type="checkbox"/> UNCLASSIFIED/UNLIMITED <input checked="" type="checkbox"/> SAME AS RPT <input type="checkbox"/> DTIC USERS		21. ABSTRACT SECURITY CLASSIFICATION UNCLASSIFIED	
22a. NAME OF RESPONSIBLE INDIVIDUAL JACK L. WINGER		22b. TELEPHONE (Include Area Code) 496371-47-6911	22c. OFFICE SYMBOL HQ USAFE/DOA

DD FORM 1473, 84 MAR

83 APR edition may be used until exhausted

SECURITY CLASSIFICATION OF THIS PAGE

90 04 10 062

All other editions are obsolete.

UNCLASSIFIED

CHAPS STUDENT TRAINING COURSE GUIDE

TABLE OF CONTENTS

- 1 INTRODUCTION TO CHAPS
- 2 GETTING STARTED IN CHAPS
- 3 MODIFYING THE CHAPS DATABASE
- 4 CHAPS DISPLAYS
- 5 CREATING MINIMUM RISK ROUTES
- 6 MODIFYING ROUTES WITH MANUAL
- 7 OBSERVING ROUTE COORDINATION
- 8 THREAT SUPPRESSION WITH CHAPS
- 9 CREATING AND UPDATING A STATESPACE

LESSON 1 INTRODUCTION TO CHAPS
NOTE TAKING SHEET NO. 1

I. INTRODUCTION

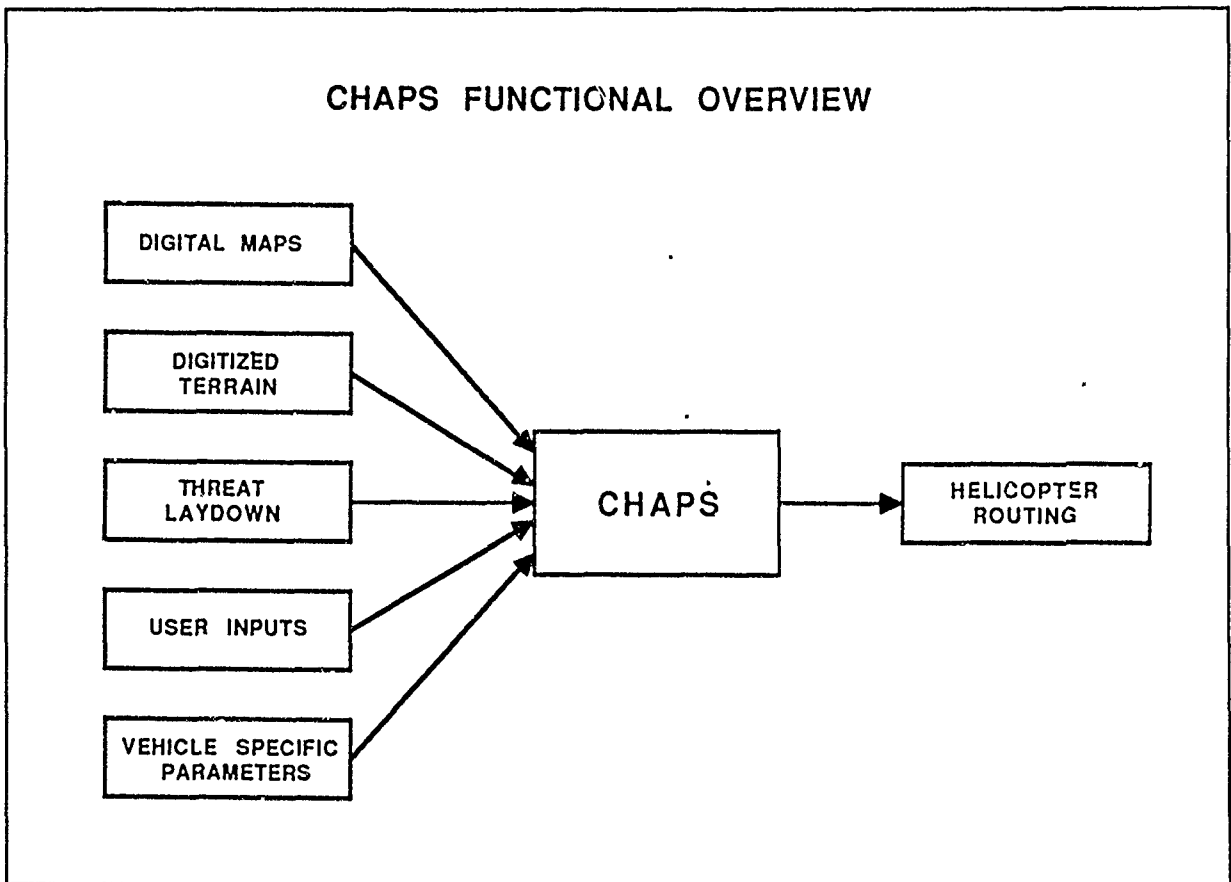


DY.C
COPY
INSPECTED

Accession For	
NTIS GRA&I	<input checked="" type="checkbox"/>
DTIC TAB	<input type="checkbox"/>
Unannounced	<input type="checkbox"/>
Justification	
By _____	
Distribution/	
Availability Codes	
Dist	Avail and/or Special
A-1	

A. Purpose

B. Functions



1. Minimum risk routes
2. Displays
3. Modify routes
4. Suppress threats
5. Detailed analysis of routes
6. Route coordination

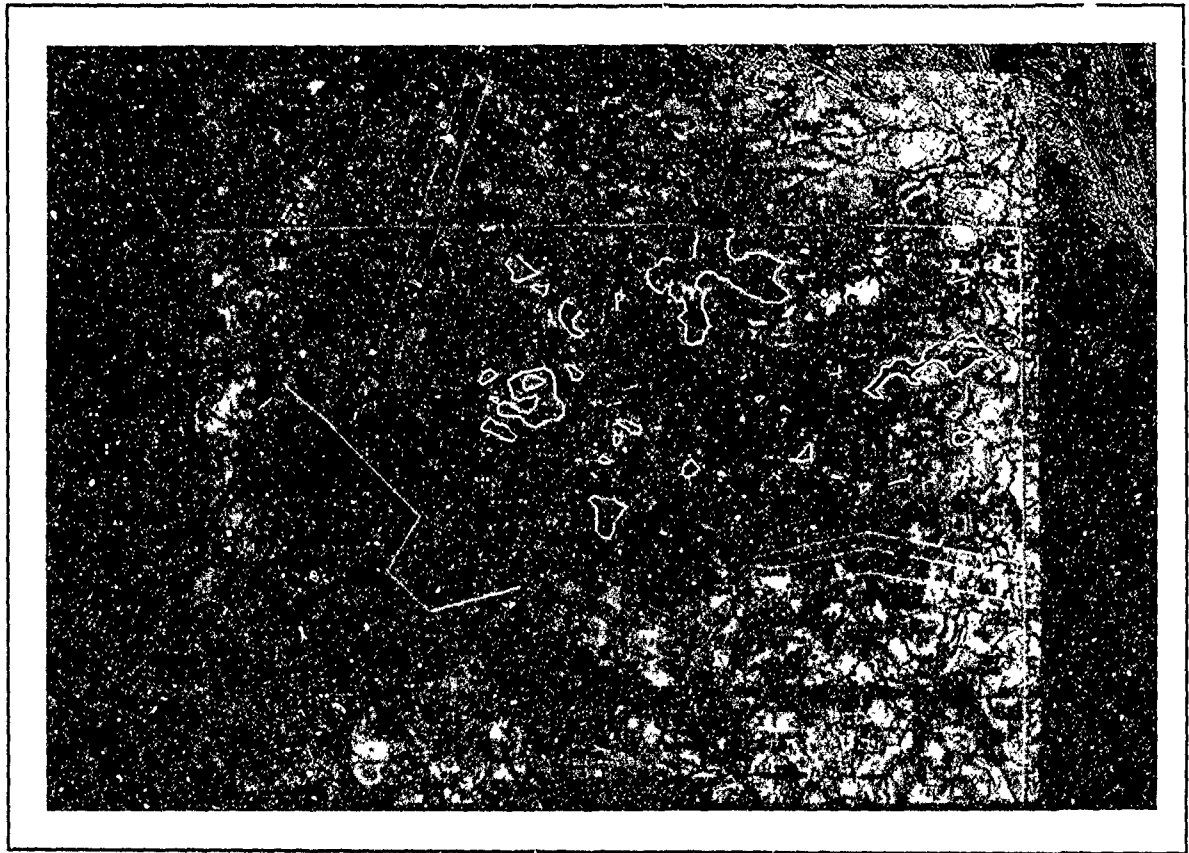
II. CAPABILITIES

A. Overview

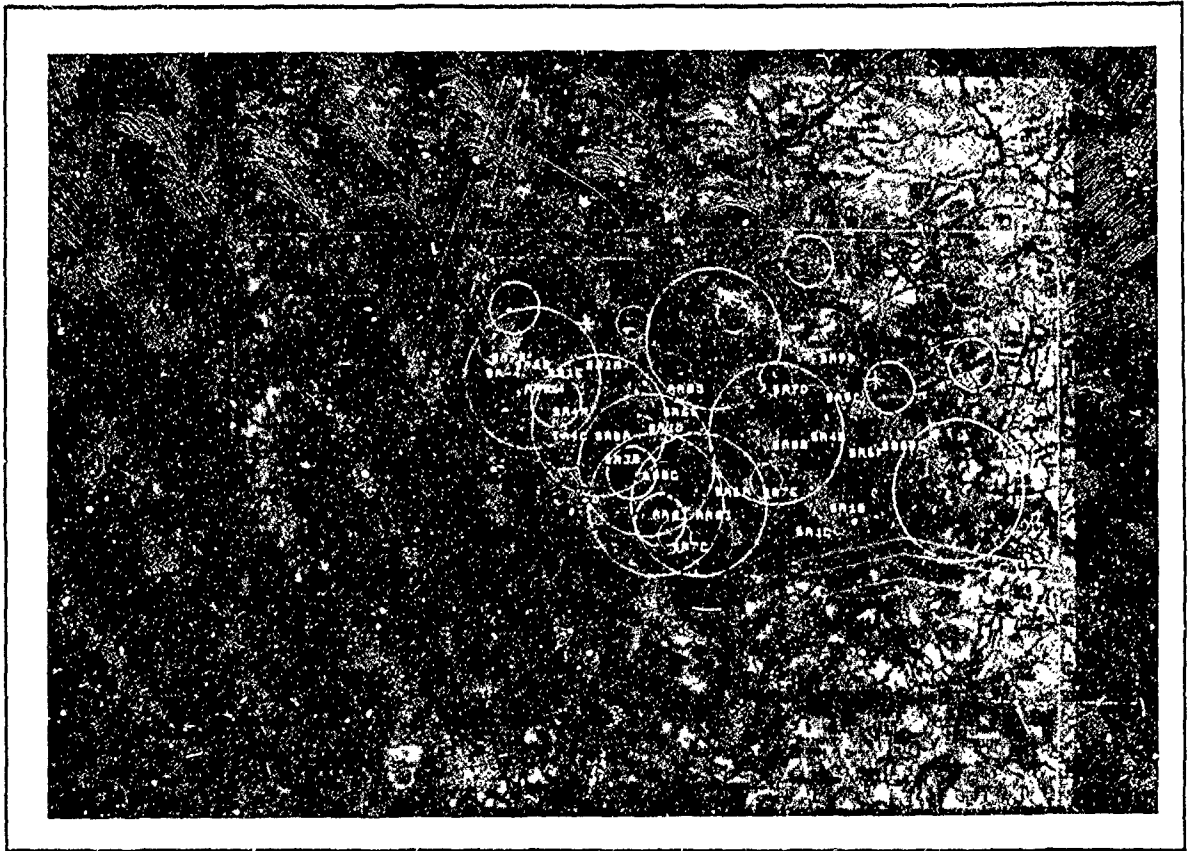
B. Digitized map background



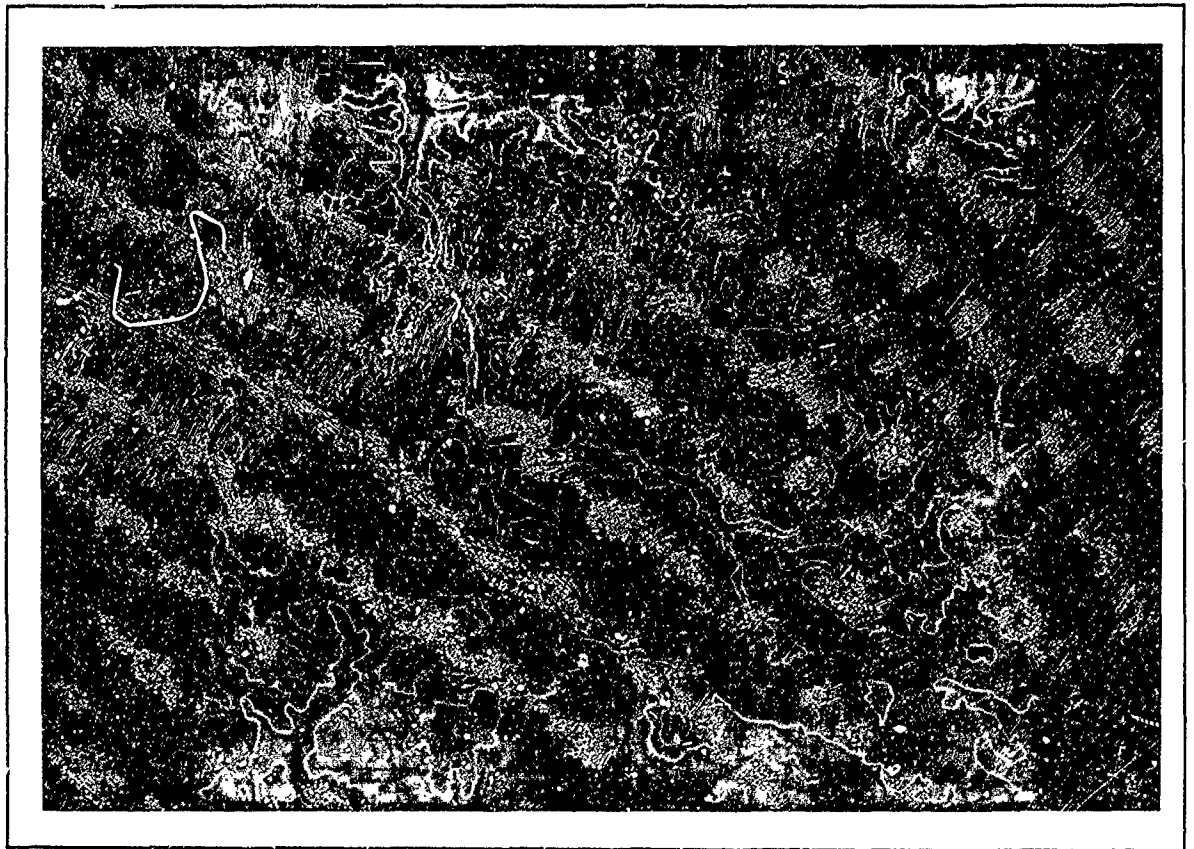
C Minimum risk routes



1. Relative lethality and threat position data



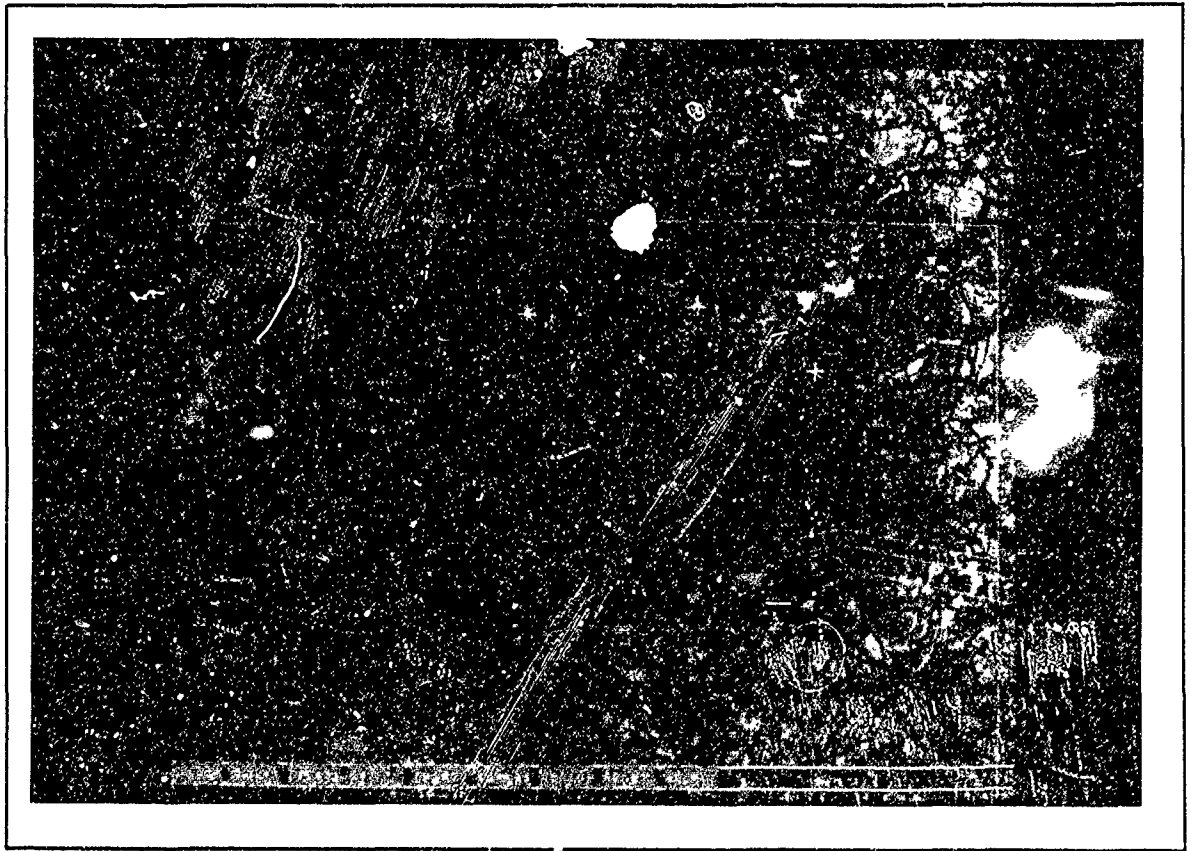
2. Terrain masking effects



3. Multiple pass DPA

D. Route Modification

1. Add or delete waypoints



2. Fuel consumption and danger

E. Threat suppression

1. Statespace suppression

2. Rerouting capability

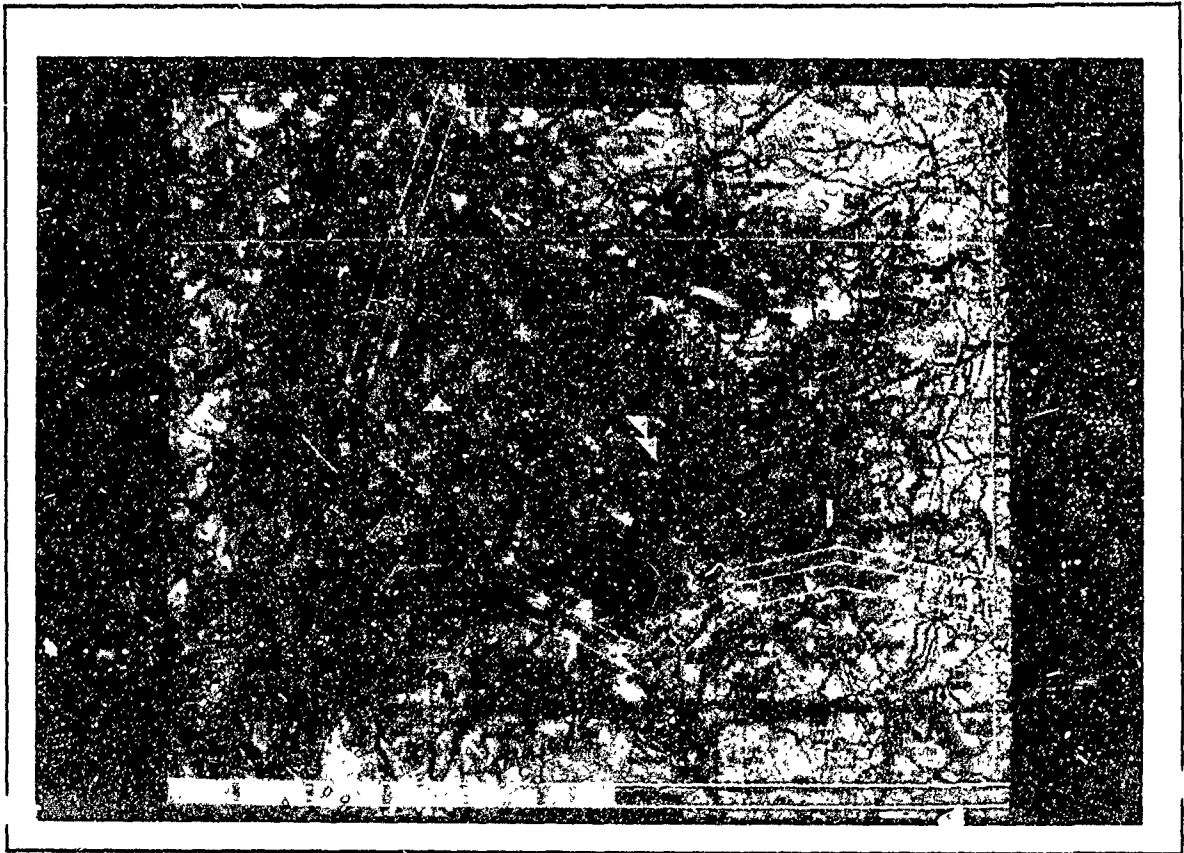
F. Route Analysis

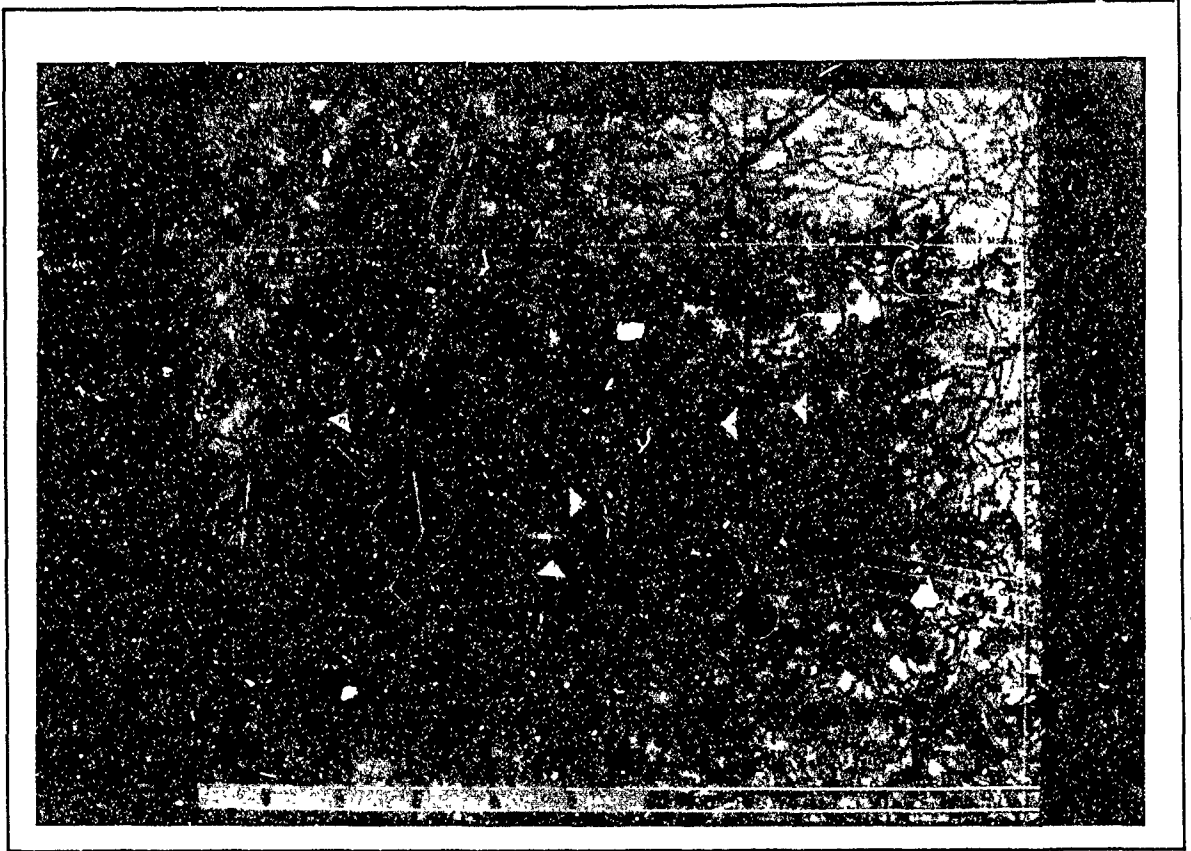
1. Leg-to-leg

G. Multi-route in-flight coordination

1. Auto-generated or modified routes

2. Enroute deconfliction





LESSON 2 GETTING STARTED IN CHAPS
NOTE TAKING SHEET NO. 2

I. INTRODUCTION

II. THE PAWS CONFIGURATION

A. Mouse

B. Displays

C. Logging in

D. Running CHAPS

III. POP-UP MENUS

A. Getting the first menu

B. Selecting items

1. Highlighting
2. Color changes
3. Moving windows
4. Scroll bars
5. Exiting
6. Input boxes

IV. TEXT MENUS

A. Selecting

B. Type ahead

C. Paging

D. Toggles

E. Active windows

V. MESSAGES

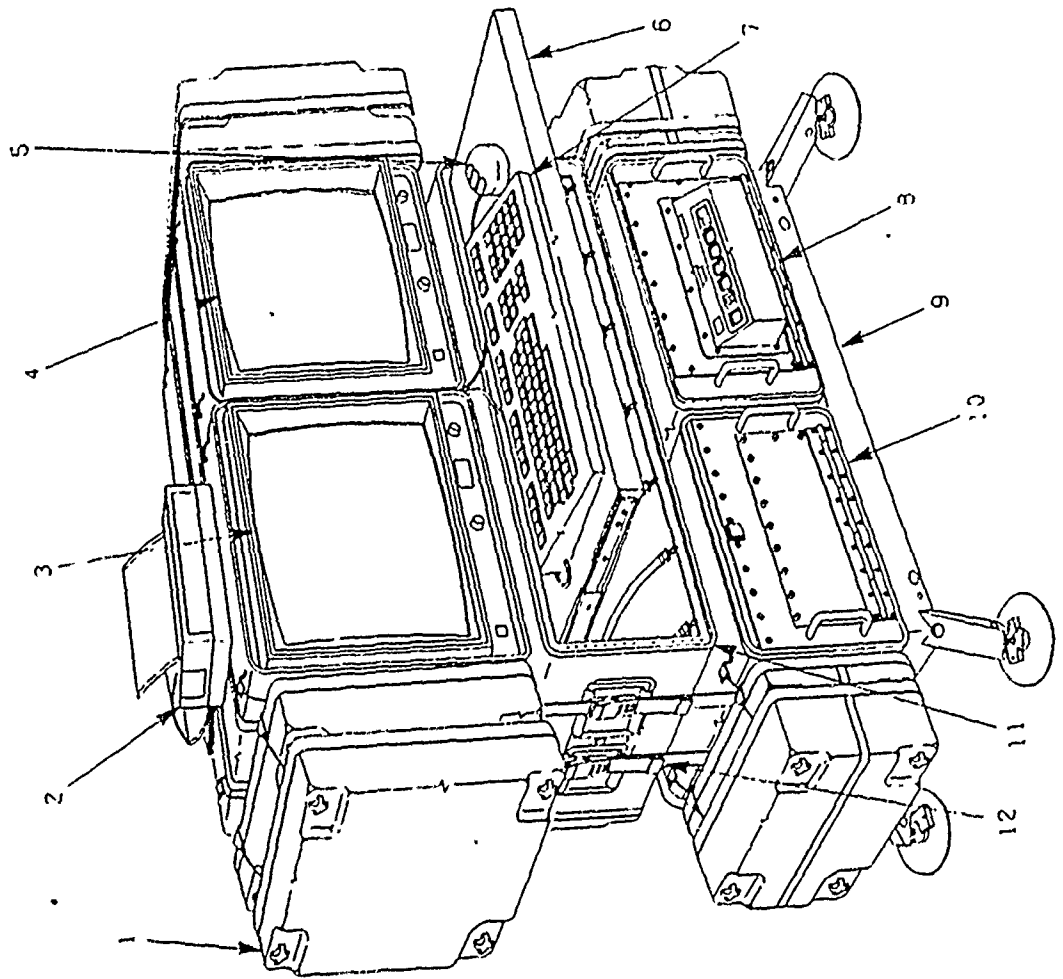
A. User response

B. Documentation

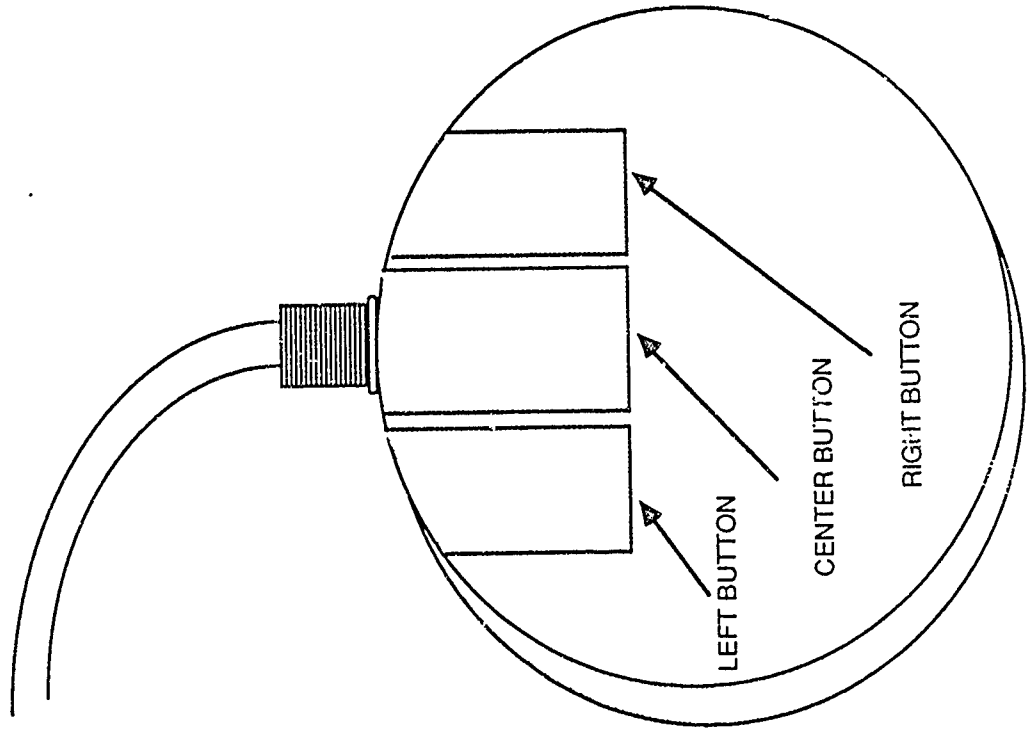
PAWS WORKSTATION CONFIGURATION

LEGEND

1. TRANSIT CASE COVER
2. PRINTER
3. TEXT GRAPHICS MONITOR ASSEMBLY (TGMA)
4. VIDEO GRAPHICS MONITOR ASSEMBLY (VGMA)
5. MOUSE
6. WORK SURFACE ASSEMBLY (WSA)
7. KEYBOARD
8. PROCESSOR ASSEMBLY (PA)
9. LEVELING BASE ASSEMBLY (LBA)
10. VIDEO ASSEMBLY (VA)
11. STORAGE ASSEMBLY (SA)
12. ADJUSTABLE STRAP



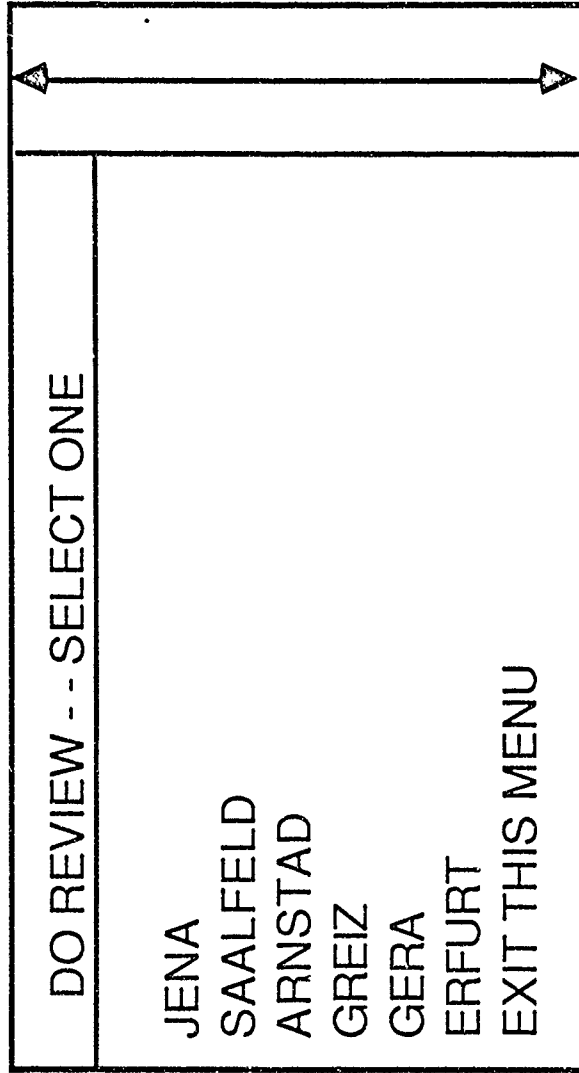
PAWS WORKSTATION MOUSE



CHAPS MAIN POP-UP MENU

MAIN	SECTION ONE
DATA	BASE
DISP	LAY
PLAN	
PIPE	L
SPEC	IAL
PERM	ITRAIS
EXIT	THIS MENU

POP-UP MENU WITH SCROLL BAR



SAMPLE MESSAGE

DOMENU05-ERR:

YOU ENTERED THE COMMAND:
DISP

THIS IS NOT ACCEPTABLE. TRY AGAIN.

HIT CARRIAGE RETURN TO CONTINUE, OR ENTER A RESPONSE TO NEXT MENU

SAMPLE MESSAGE DOCUMENTATION

DOMENU05 - YOU ENTERED THE COMMAND:

<CHAR>

THIS IS NOT ACCEPTABLE. TRY AGAIN.

MESSAGE TYPE: ERROR

CAUSE: An invalid command was entered.

PROGRAM ACTION: Return an invalid completion code to the calling subroutine.

USER ACTION REQUIRED: Enter a valid option.

LESSON 3 USING THE DATABASE MANAGER
NOTE TAKING SHEET NO. 3

I. INTRODUCTION

II. TEXT WINDOWS

III. DATABASE STRUCTURE

A. Tables

B. Records

C. Items

1. Vector items

2. Parallel vector items

IV. DATABASE FUNCTIONS

A. Add

B. Delete

C. Change

D. Copy

E. Show

F. Write

V. REPORT GENERATOR

A. Show

B. Create

DATABASE TEXT MENU

KB

VI220 Terminal

UNCLASSIFIED US ARMY

UNCLASSIFIED US ARMY

S7

```
DATA BASE : SPECIFY DATA BASE OPERATION      P. 1 OF 1
-----+-----+-----+-----+-----+-----+
F1--DONE      - DONE WITH DATABASE OPERATIONS      (/ )
F2--ADD       - ADD A RECORD TO A TABLE            (AD )
F3--DELETE    - DELETE RECORD(S) FROM A TABLE      (DE )
F4--CHANGE    - CHANGE RECORD(S) FROM A TABLE      (CH )
F5--COPY      - COPY A RECORD IN A TABLE           (CO )
F6--SHOW      - SHOW RECORD(S) OF A TABLE          (SH )
F7--REPORT    - CREATE OR MODIFY A REPORT           (RE )
F8--WRITE     - WRITE CONTENTS OF DATABASE TO OUTPUT FILE (WR )
-----+-----+-----+-----+-----+
S1--HELP      :S2--NEXT PAGE                       :S3--GO TO 1ST PAGE :S4--FIND A STRING
S5--GO TO PAGE :S6--GRAPHICS ON/OFF:S7--MAIN MENU   :S8--MENU BACKUP
-----+-----+-----+-----+-----+

```

UNCLASSIFIED US ARMY

DATABASE STRUCTURE CHART

BASE IDENTIFIER	LATITUDE/ LONGITUDE	NUMBER OF WEAPON TYPES	WEAPONS TYPES	NUMBER OF WEAPONS
UPHA	51-56-16 N 001-15-30 W	6	APHID	120
			ATOLL	300
			KERRY	500
			KAREN	200
			KINGBOLT	100
			SAGGER	700
LAKE	52-24-19 N 000-33-01 W	4	KERRY	700
			ATOL	200
			KINGBOLT	100
			KELT	50

DATABASE FUNCTIONS SUMMARY

FUNCTION	TABLE	RECORDS	ITEMS
Add	X		X
Delete	X	X	
Change	X	X	X.
Copy	X	X	*
Show	X	X	X
Write	X	X	
* specify identifier only			

REPORT INFORMATION

VT220 Terminal KB

HEADERS	DESCRIPTION	UNITS	LOWER BOUND	UPPER BOUND	TABLE ITEM
DMPI ID	DMPI ID	----	----	----	DMPI ID
DMPI CLAS	CLASSIFICATION (EG. OCA)	----	RECE	----	DMPI CLAS
DMPI TYPE	DMPI TYPE	----	----	----	DMPI TYPE
DMPI ACTY	AIRCRAFT TYPE	----	----	----	DMPI ACTY
DMPI WPTY	WEAPON TYPE	----	----	----	DMPI WPTY
DMPI DSOL	DESCPTN OF SOLTN STATUS	----	----	----	DMPI DSOL

HIT CARRIAGE RETURN TO CONTINUE, TYPE Q TO QUIT

DMPI ID	DMPI CLAS	DMPI TYPE	DMPI ACTY	DMPI WPTY	DMPI DSOL
RECE1	RECE	RECE	OH-58D	PHOTO	PASSED WEAPONNEERING
RECE2	RECE	RECE	OH-58D	PHOTO	PASSED WEAPONNEERING
RECE3	RECE	RECE	OH-58D	PHOTO	PASSED WEAPONNEERING

HIT CARRIAGE RETURN TO SEE REPORT PROC. MENU
OR IF YOU WISH TO TYPE AHEAD, ENTER SELECTION

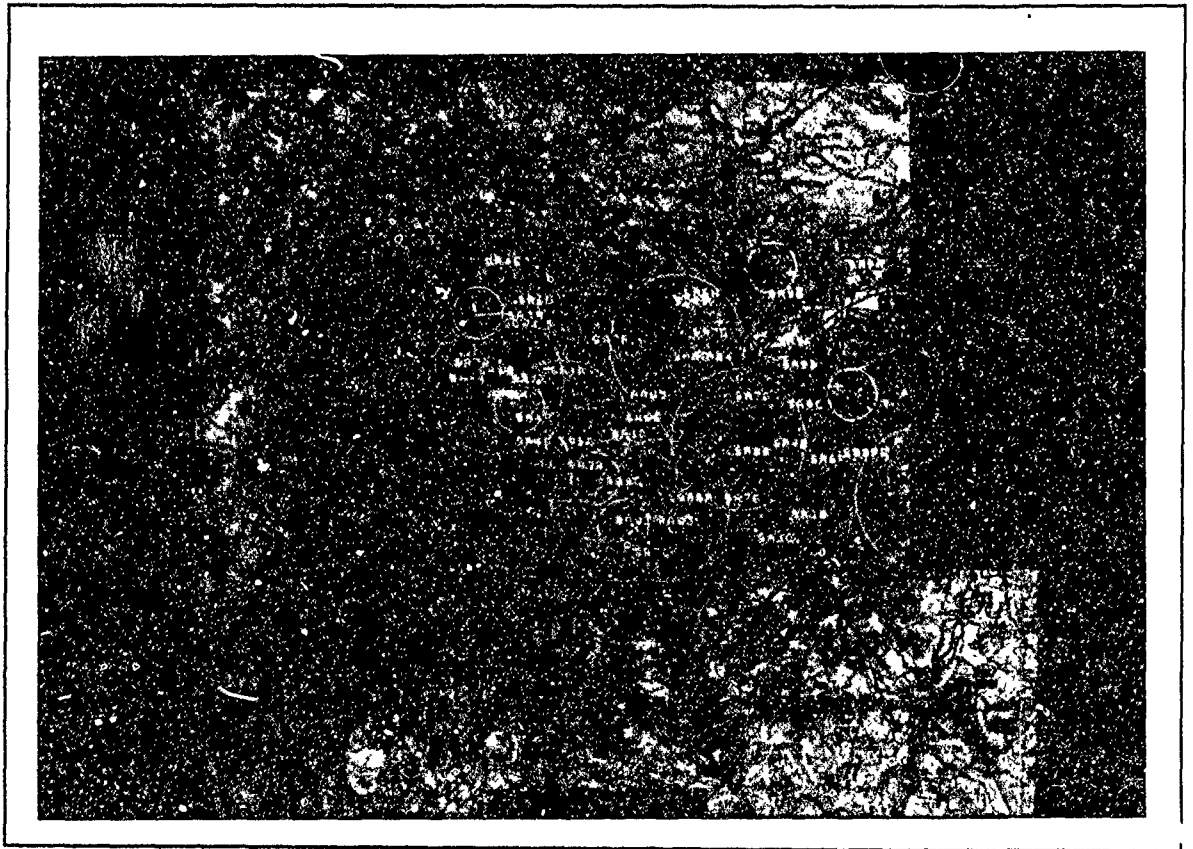
LESSON 4 THE CHAPS DISPLAY
NOTE TAKING SHEET NO. 4

I. INTRODUCTION

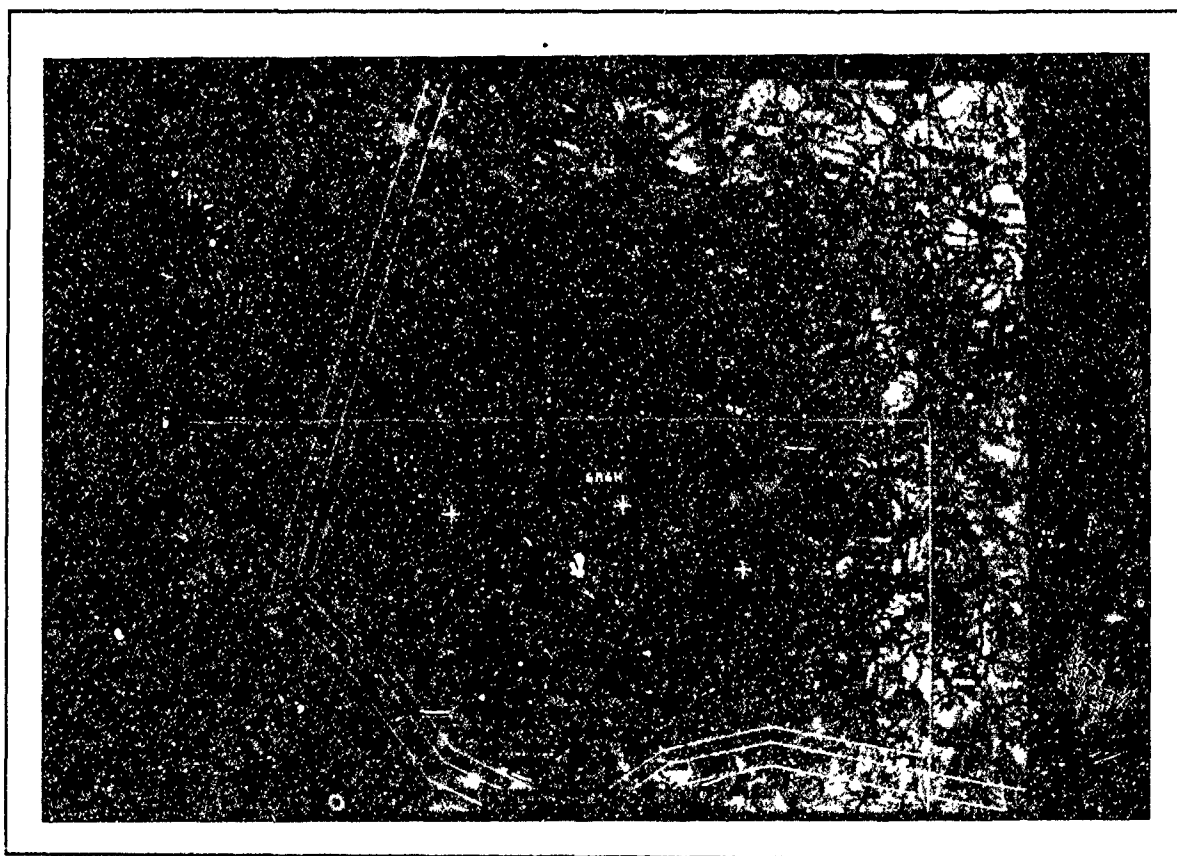
II. GRAPHICS DISPLAYS

A. Select threats

B. Circles

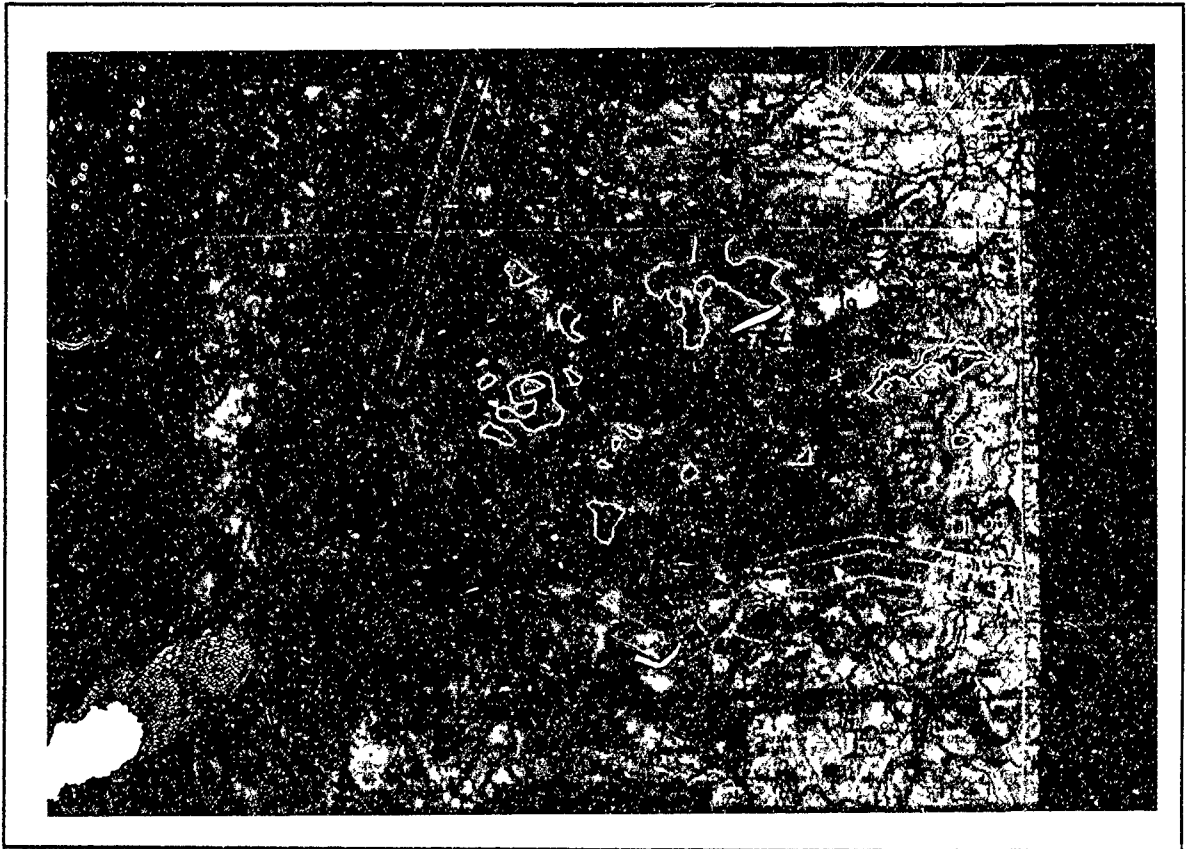


C Exposure



D. Threat IDs

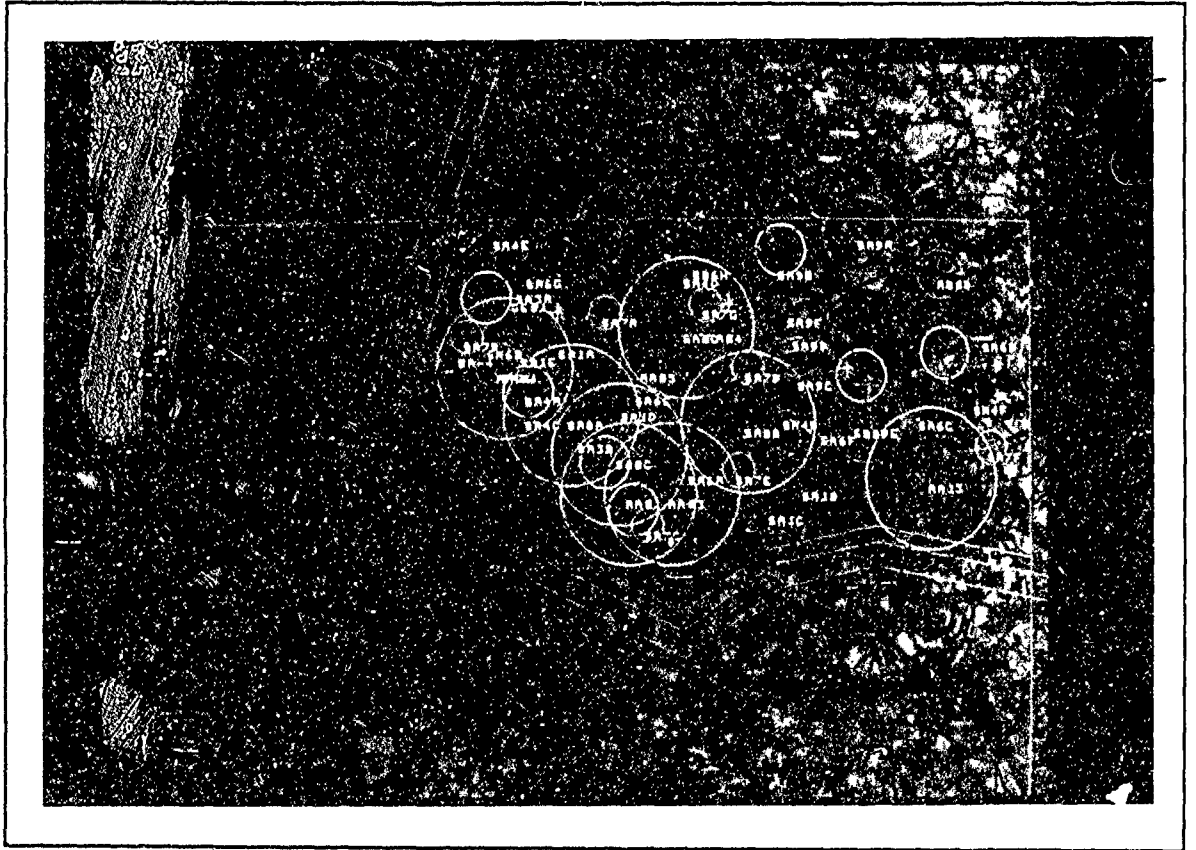
E. Danger



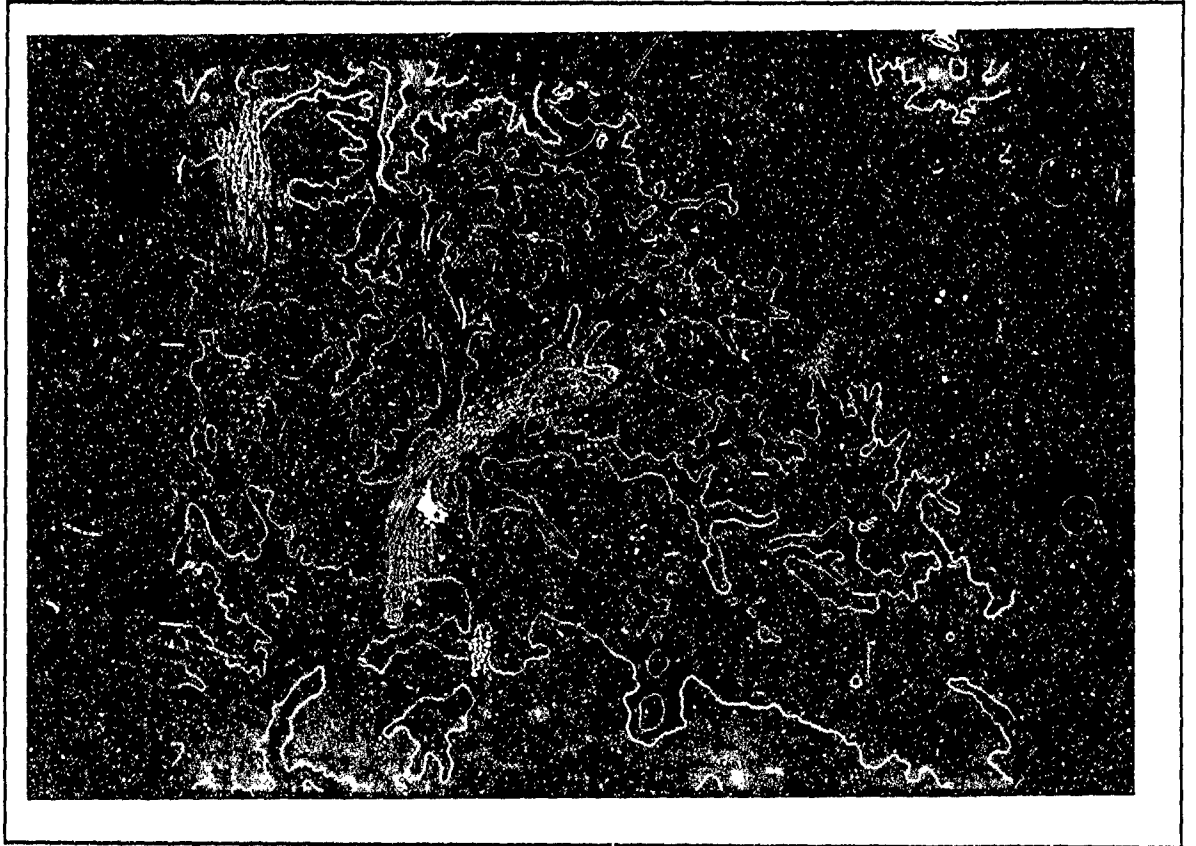
F. Plan



G. Legend

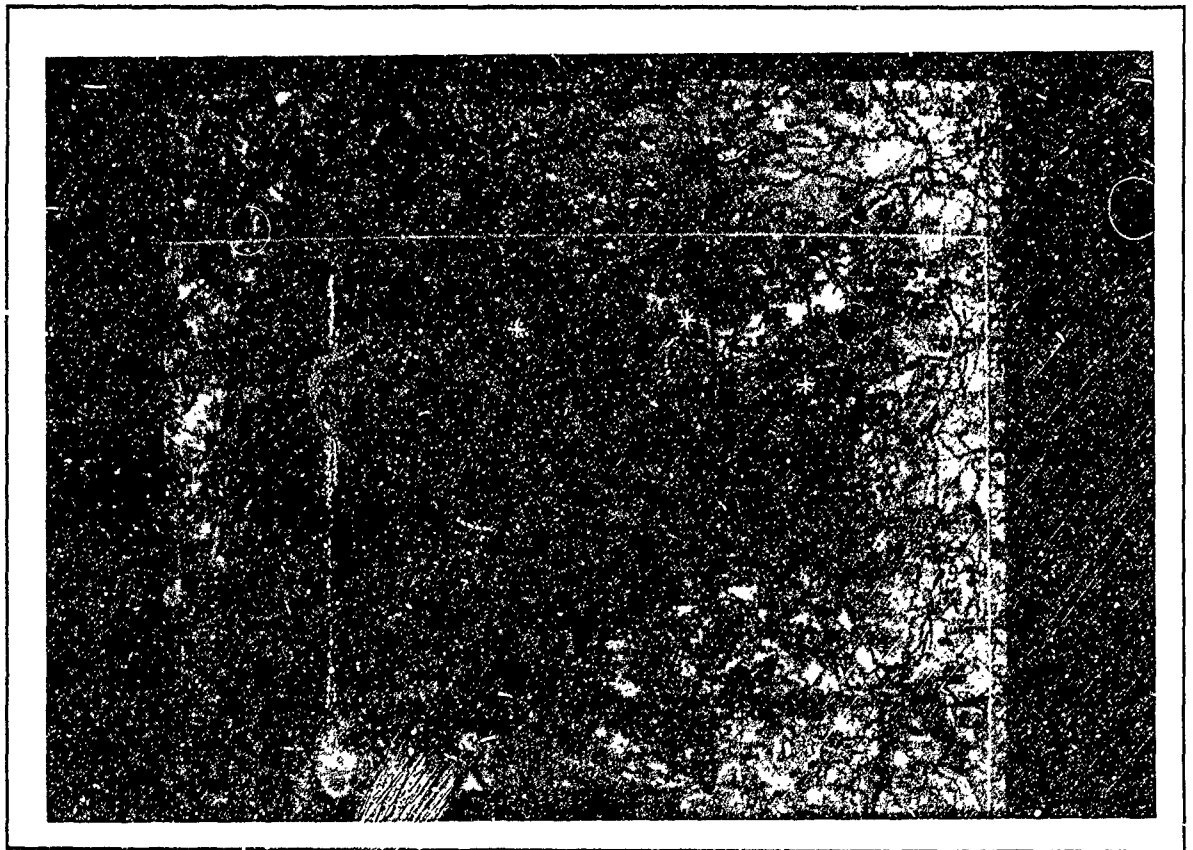


H. Terrain

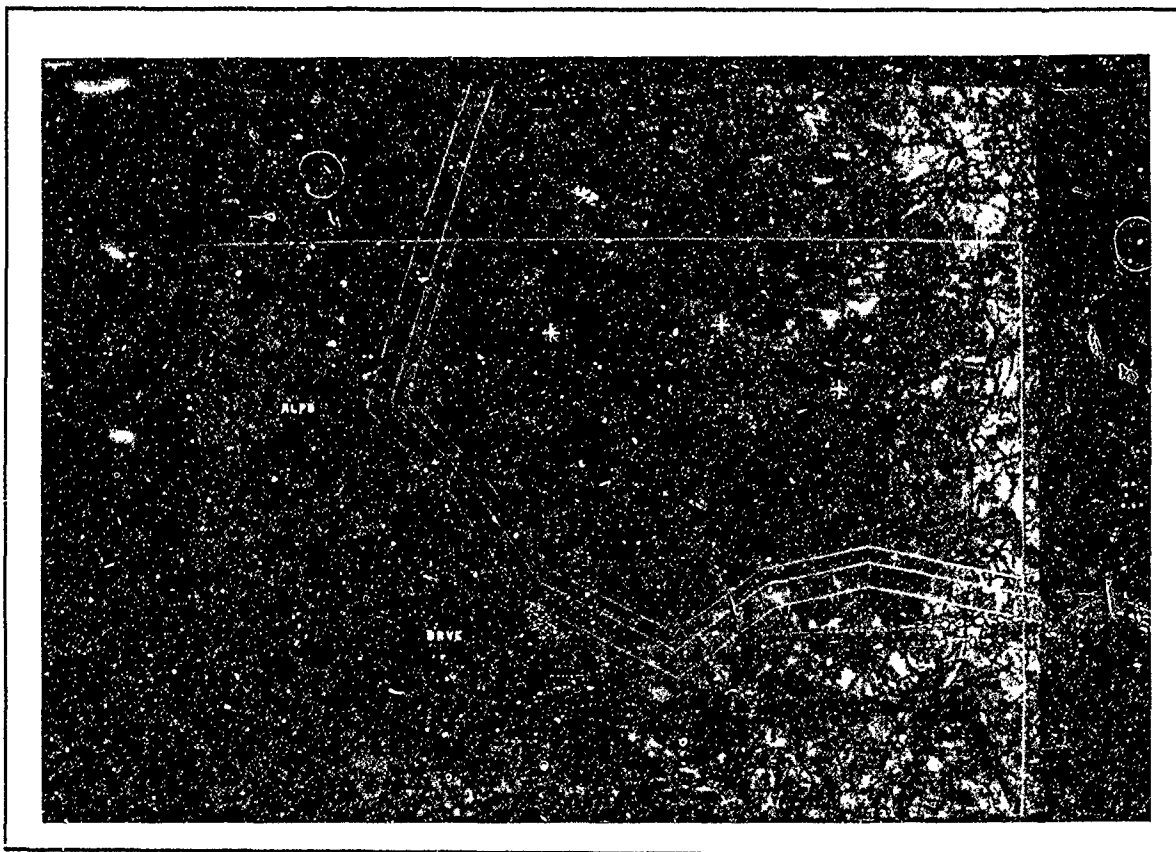


I. Features

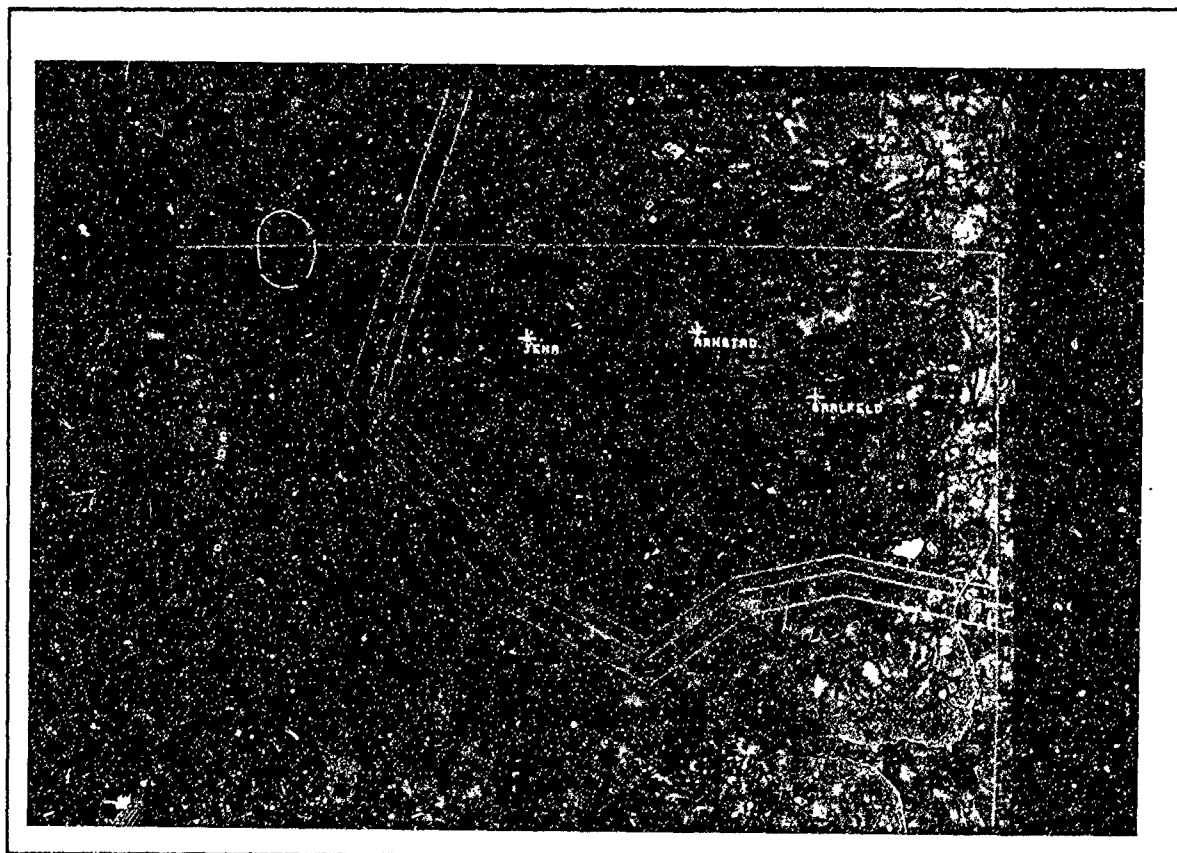
J. FLOT



K Bases

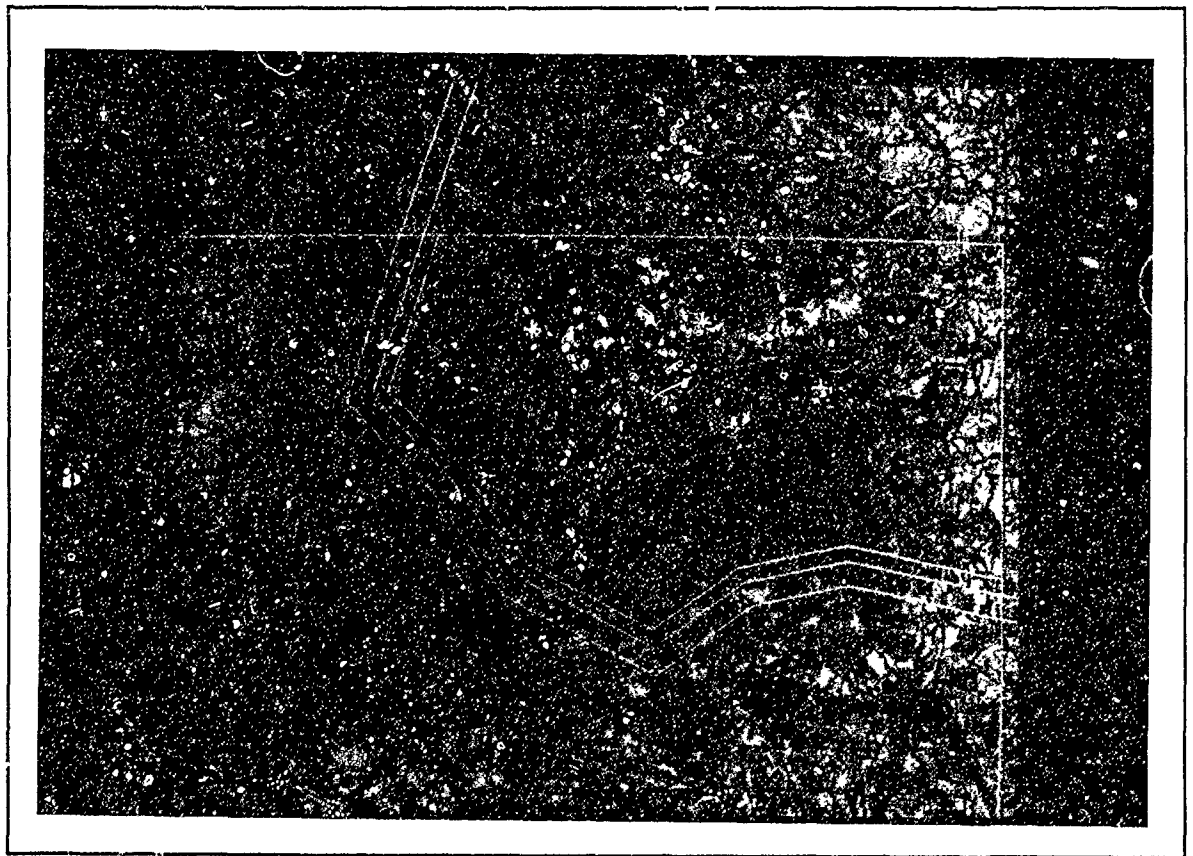


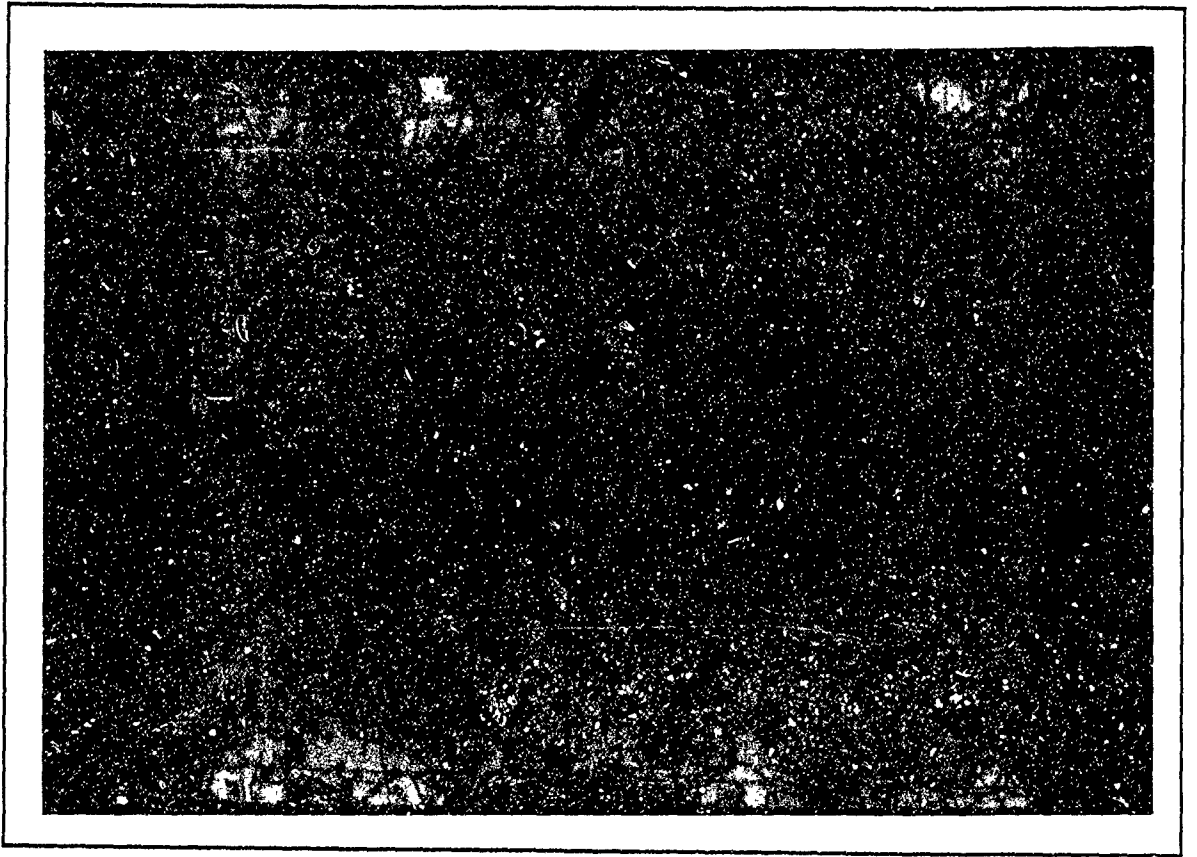
L. Targets



III. MAP DISPLAYS

A. Map scales

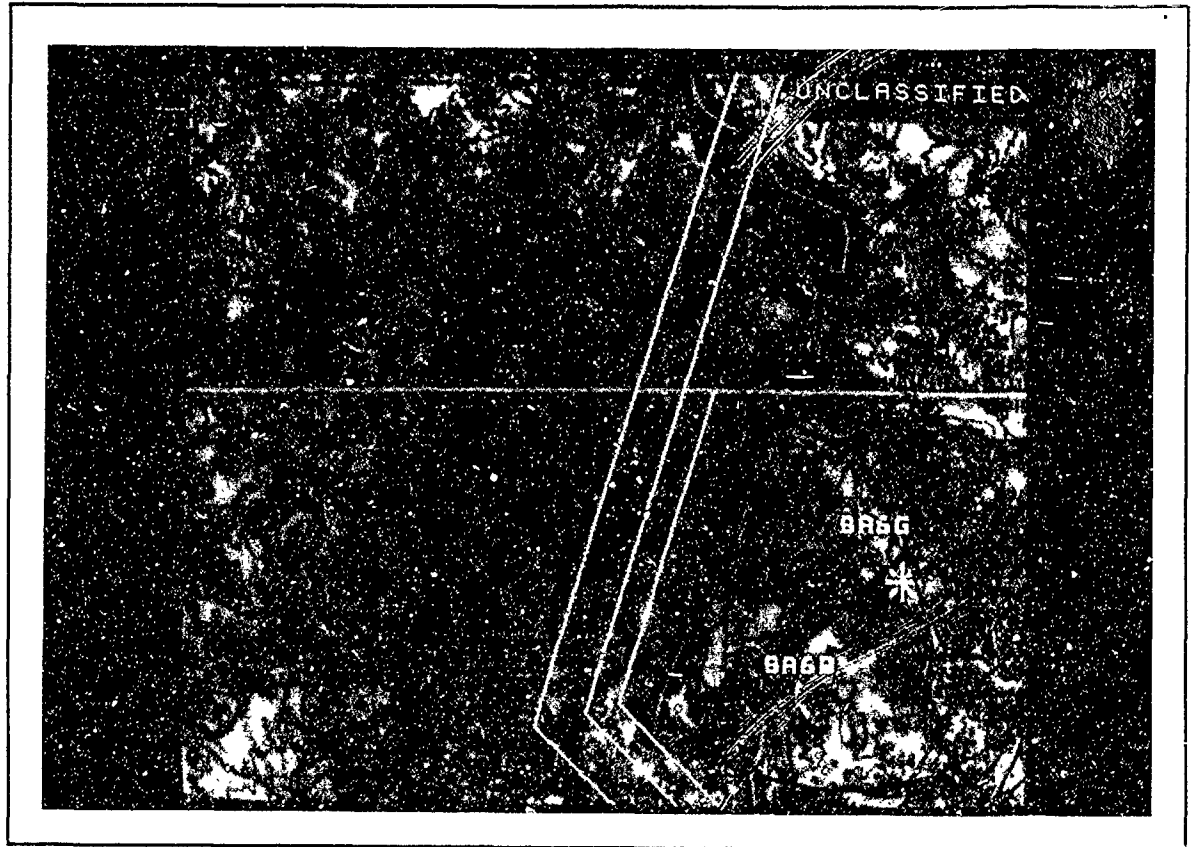




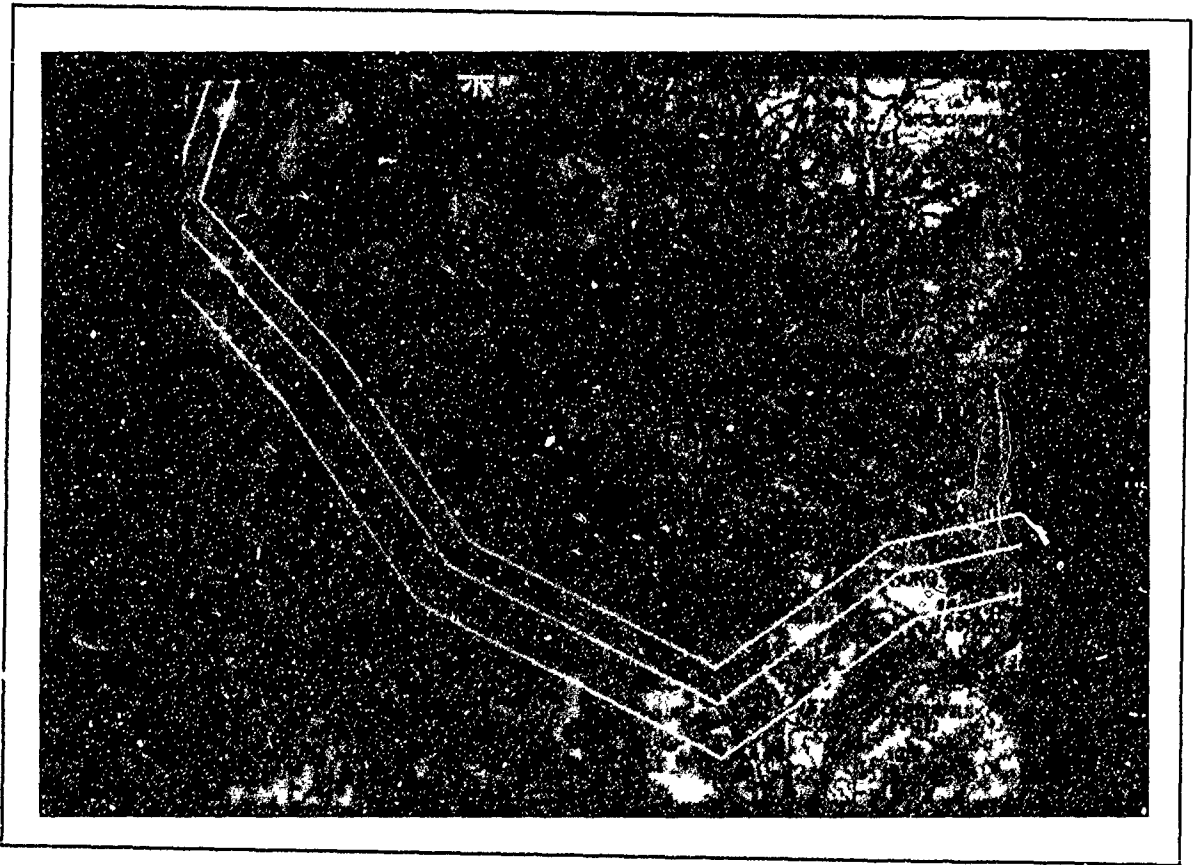
B. Scenario



C Zoom



D. Magnify

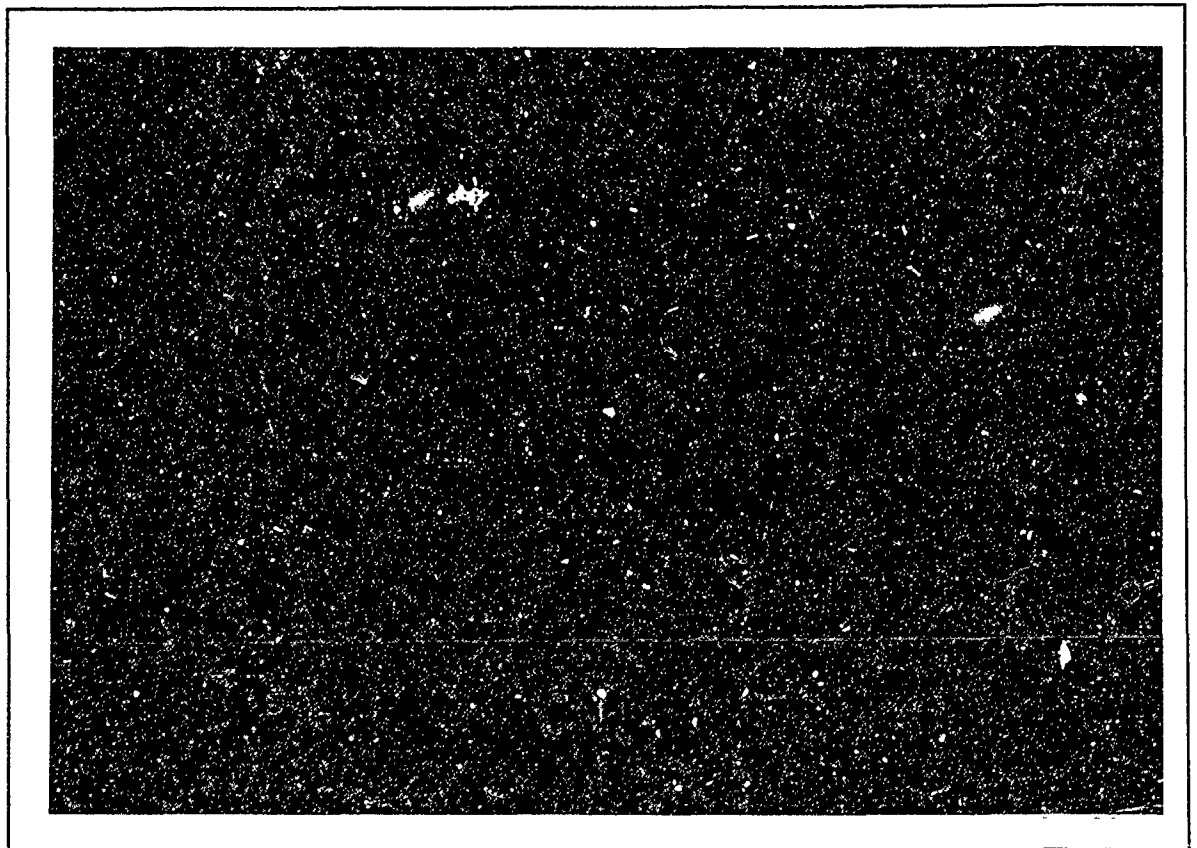


E. Intensity

F. Jump to

G. Roam

H. Gray map



I. Slide Map

J. Location

LESSON 5 CREATING MINIMUM RISK ROUTES
NOTE TAKING SHEET NO. 5

I. INTRODUCTION

II. TASKING

A. The tasking form

B. Database changes

C. Checking

III. ROUTING

A. Penetration Altitude

B. Creation

C Save

IV. OUTPUT

A. Analysis

TASKING INPUT FORM

APPENDIX/CHARLIE/ATTK//

RESOURCES/-//

UNIT/LOCN/TYPAC/NR/SORTIES/DIV1/DIV2/NOTES//
ALPB198/ALPB/AH-64A/20/40/-/-/-//
BRVE9/BRVE/AH-64A/20/40/-/-/-//
SORTISUM/80//

APPENDIX/DELTA/ATTK//

UNIT/MSNR/OBJ/TGT/TOT/NLT/TYPAC/NR/SCL/NOTES//
ALPB198/01LC301/36/ATTK1/1910/1914/AH-64A/6/16HELLFIRE/1//

ALPB198/01LC302/36/ATTK2/1915/1919/AH-64A/6/16HELLFIRE/1//

ALPB198/01LC303/36/ATTK3/1920/1924/AH-64A/6/16HELLFIRE/1//

BRVE9/01LC304/36/ATTK4/1925/1929/AH-64A/6/16HELLFIRE/1//

BRVE9/01LC305/36/ATTK5/1930/1934/AH-64A/6/16HELLFIRE/1//

BRVE9/01LC320/36/ATTK6/1930/1934/AH-64A/6/16HELLFIRE/1//

SORTISUM/ALPB198/18//

SORTISUM/BRVE9/18//
SORTISUM/36//

NOTES//
1/TOT-WINDOW/1900-TO-1950//

PROCEDURE FOR ADDING NEW TARGETS

- ADD A TARGET TO THE TGT TABLE AT THE NEW
LATITUDE/LONGITUDE
- ADD A DMPI RECORD OF THE SAME TYPE OF ATTACK
TO A NEW DMPI ID (RECCE OR ATTK)
- CHANGE THE TGT ITEM OF THE NEW DMPI TO THE
NEW TARGET NAME
- CHANGE OR ADD A TASKING LINE TO THE TASKING
FORM USING THE NEW DMPI AND TARGET

PROCEDURE FOR MOVING OR ADDING HELICOPTER UNITS

- IF THERE IS NO BASE RECORD IN THE BASE TABLE FOR THE LOCATION AT WHICH THE HELICOPTER UNIT IS, COPY ANOTHER BASE AND CHANGE THE LAT/LON (ITEM X).
- IF THERE IS NO AIRS UNIT FOR THE HELICOPTER UNIT, CREATE ONE BY COPYING AN EXISTING AIRS UNIT AND MODIFYING THE BASE AND NUMBER OF HELICOPTERS AVAILABLE ITEMS.
- IF THERE IS A UNIT, CHANGE THE BASE ITEM TO THE BASE NAME AT THE NEW LOCATION.
- MODIFY THE TASKING FORM USING THE NEW AIRS UNIT (IF ADDING A NEW UNIT).

PENETRATION POP-UP MENU

PENETRATION -- SELECT ONE

LEVEL	1	:	50.00	FEET
LEVEL	2	:	75.00	FEET
LEVEL	3	:	100.00	FEET
LEVEL	4	:	150.00	FEET
LEVEL	5	:	200.00	FEET

EXIT THIS MENU

DETAILED ROUTE ANALYSIS (1)

RNSRP -- ARRAY NISN -- POSSIBLE MISSIONS FOR TARGET ARNSTAD (3)
 MISSION NUMBER - 1 DMPI - RECE3
 WEAP SOLUTION - 0 X OH-58D - 1 X PHOTO SCL - REECE
 STAGING BASE - BRVE RECOVERY BASE - BRVE ALTERNATE - ALPB
 INGRESS LLTR /LN03 X-ON(240)/
 EGRESS LLTR /LN03 X-ON(240)/
 FUEL REQUIRED / 614.2 / COMBAT RESERVE VIOLATION
 TIMING:(TAKE OFF/IN-TANKER/IN-FEBA / TOT /EG-FEBA /EG-TANKER/ RECOVER)
 (1721 / 1721 / 1739 / 1800 / 1823 / 1840 / 1840)
 INGRESS DISTANCE / 67. NM INGRESS DANGER / 78.82
 EGRESS DISTANCE / 67. NM EGRESS DANGER / 78.82
 LOCATION PREFERENCE - WILL NOT BE CONSIDERED
 M-ON-N RESULT - THIS MISSION WAS CHOSEN

TIME	LATITUDE/LONGITUDE	ALT	HDS	MODE	DIST	DANGER
0.0	32U NA642595	50.0	311	BRVE	7.63	0.1144
0.0	32U NA534686	50.0	033	TRC3	8.31	0.1244
0.0	32U NA616817	100.0	099	WAYPOINT	6.46	0.0968
3.2	32U NA734800	100.0	056	WAYPOINT	6.32	0.0949
6.4	32U NA831867	100.0	032	LN03 X-ON	0.56	0.0084
6.7	32U NA936875	100.0	090	WAYPOINT	6.94	0.3219
10.1	32U NA965878	100.0	045	WAYPOINT	1.41	0.1310
10.8	32U NA983997	100.0	090	WAYPOINT	5.94	5.9322
13.8	32U PA094999	100.0	045	WAYPOINT	7.03	0.5774
17.3	32U PA184993	100.0	000	WAYPOINT	2.00	0.1747
18.3	32U PB193030	100.0	045	WAYPOINT	7.03	0.4499
21.8	32U PB272125	100.0	000	WAYPOINT	5.00	0.2784
24.3	32U PB270218	100.0	090	WAYPOINT	1.97	20.8026
25.3	32U PB307217	100.0	026	WAYPOINT	2.23	35.0828
26.4	32U PB324256	100.0	045	WAYPOINT	1.40	14.8040
27.1	32U PB342275	100.0	013	WAYPOINT	2.06	0.0929
28.2	32U PB350313	100.0	193	ARNSTAD	2.06	0.0829

DETAILED ROUTE ANALYSIS (2)

29.2	32U	PB342275	100.0	225	WAYPOINT	1.40	14.9040
29.9	32U	PB324256	100.0	206	WAYPOINT	2.23	35.0828
31.0	32U	PB307219	100.0	270	WAYPOINT	1.97	20.8026
32.0	32U	PB270218	100.0	190	WAYPOINT	5.00	0.2784
34.5	32U	PB272125	100.0	225	WAYPOINT	7.03	0.4498
38.0	32U	PB183030	100.0	180	WAYPOINT	2.00	0.1747
39.0	32U	PA184993	100.0	225	WAYPOINT	7.03	0.5774
42.5	32U	PA094899	100.0	270	WAYPOINT	5.94	5.9322
45.5	32U	NA983897	100.0	225	WAYPOINT	1.41	0.1310
46.2	32U	NA965878	100.0	270	WAYPOINT	6.94	0.3219
49.7	32U	NA936875	100.0	212	WAYPOINT	0.56	0.0084
50.0	32U	NA831867	100.0	236	LN03	6.32	0.0949
53.1	32U	NA734800	100.0	279	WAYPOINT	6.46	0.0968
56.3	32U	NA616817	50.0	213	WAYPOINT	8.31	0.1244
56.3	32U	NA534686	50.0	131	TRC3	7.63	0.1144
56.3	32U	NA642595	50.0	131	BRVE	0.00	0.0000

TOTAL DISTANCE = 144.54 NM TOTAL DANGER = 158.1532

THREATS ENCOUNTERED BY MISSION

THREAT ID	MODEL ID	TYPE	LATITUDE/LONGITUDE	RANGE
A3A	SA-3	SAM	32U NB83303393	32.00
A1A	SA-11	IR	32U NB94102113	17.00
A3B	SA-3	SAM	32U NA9229898	32.00
A6A	SA-6	SAM	32U PA26579215	18.50
A01	SA-8	SAM	32U PA11318625	9.00
A8A	SA-8	SAM	32U NB96760450	9.00
A6B	SA-6	SAM	32U NB76452085	18.50
A4C	SA-14	IR	32U NB86140431	6.00
A02	57MM SUN	AAA	32U PA05249354	3.30
A03	SA-9	SAM	32U PA21968648	9.00
A1D	SA-11	IR	32U PB09700661	17.00
A04	ZSU-23-4	AAA	32U PB30472562	3.10
A1E	SA-11	IR	32U NB84721912	17.00
A6E	SA-5	SAM	32U PB13161039	18.50
A8C	SA-8	SAM	32U PA08759546	9.00
E01	SQUATEYE	ACQ	32U NB82163206	29.23

LESSON 6 MODIFYING ROUTES WITH CHAPS
NOTE TAKING SHEET NO. 6

I. INTRODUCTION

II. GETTING IN

A. Menus

B. Command boxes

C. Zoom

III. TEXT SUMMARY

A. First line

B. Second line

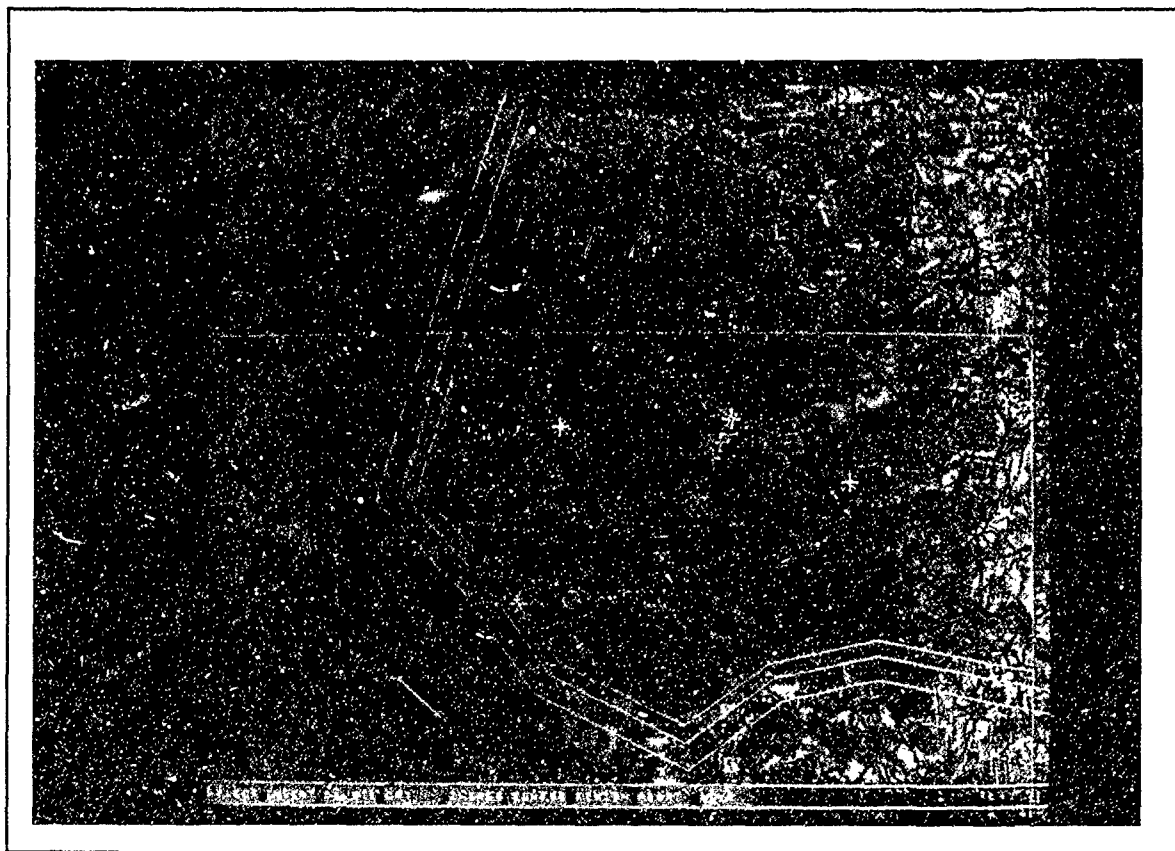
C Third line

D Messages

IV. THE MAP DISPLAY

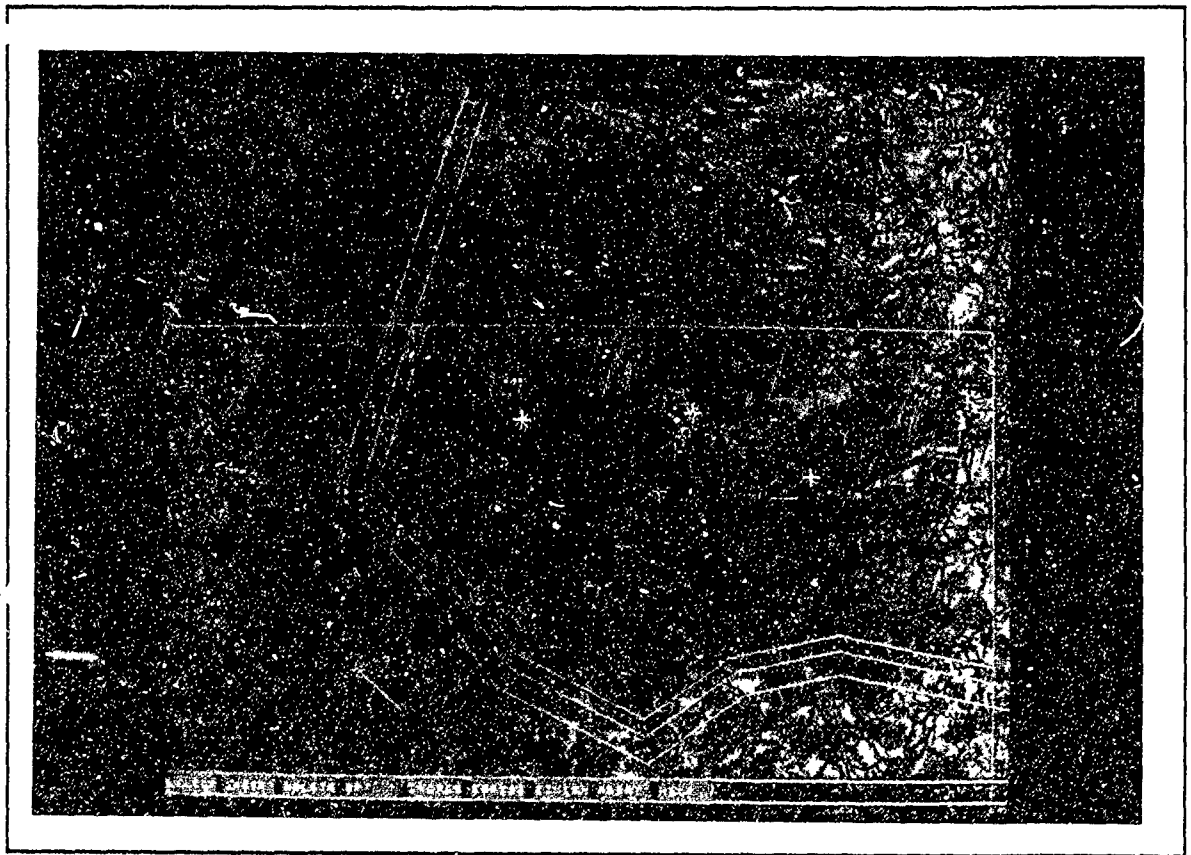
A. Selected poi..

B. Route display



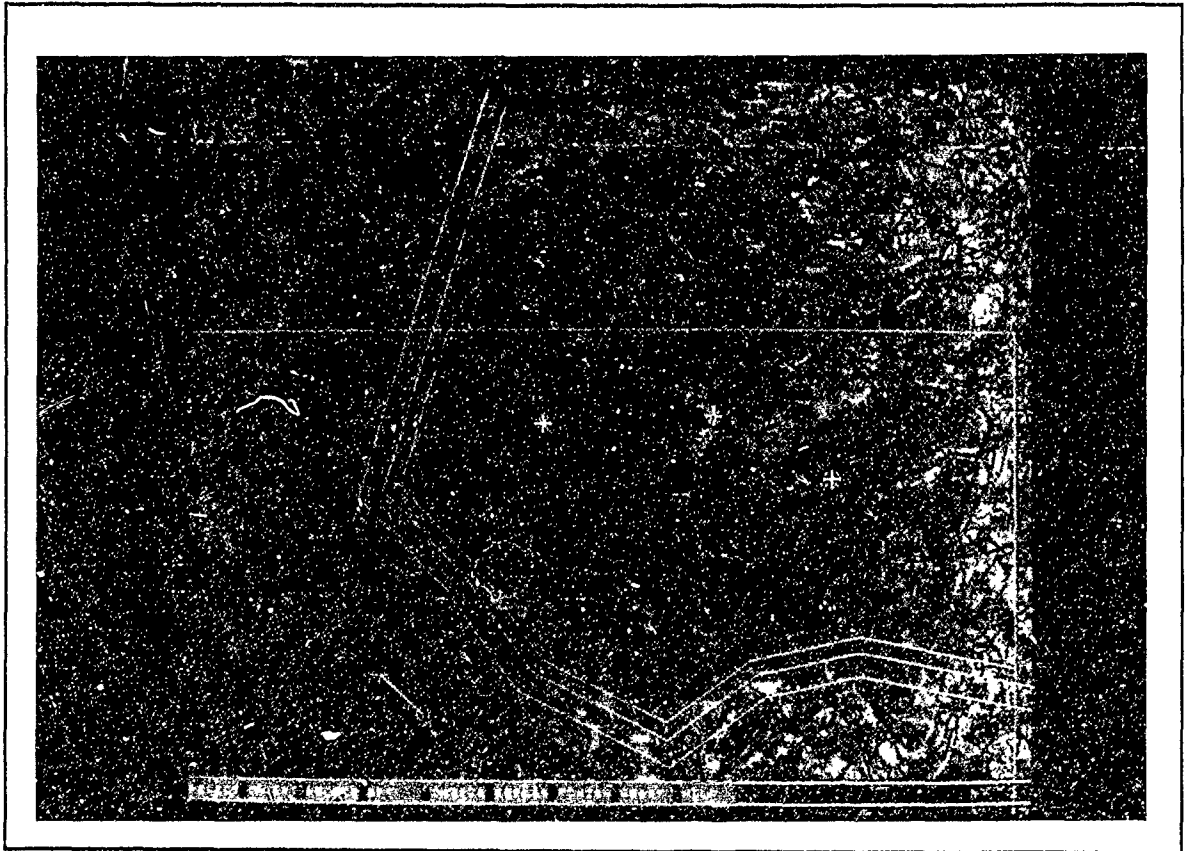
V. THE COMMAND BOXES

A. Select

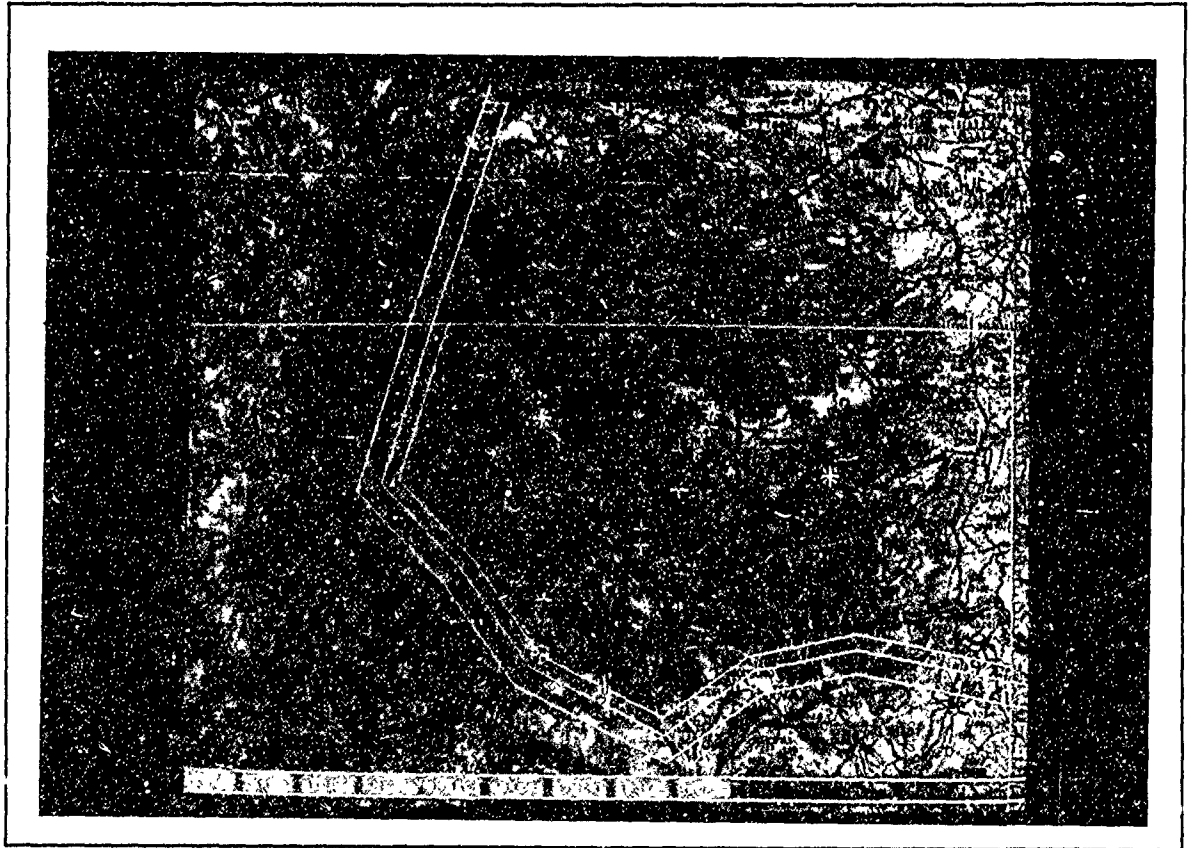


B. Insert

C Delete



D. Optimize



E. Ingress

F. Egress

G. Finish

H. Abort

I. Help

PLAN OPTIONS POP-UP MENU

PLAN OPTIONS -- SELECT ONE
ROUTE
SAVE
SHOW
SUPPORT
REROUTE
REVIEW
REPORTS
MANUAL
TIME PHASE
EXIT THIS MENU

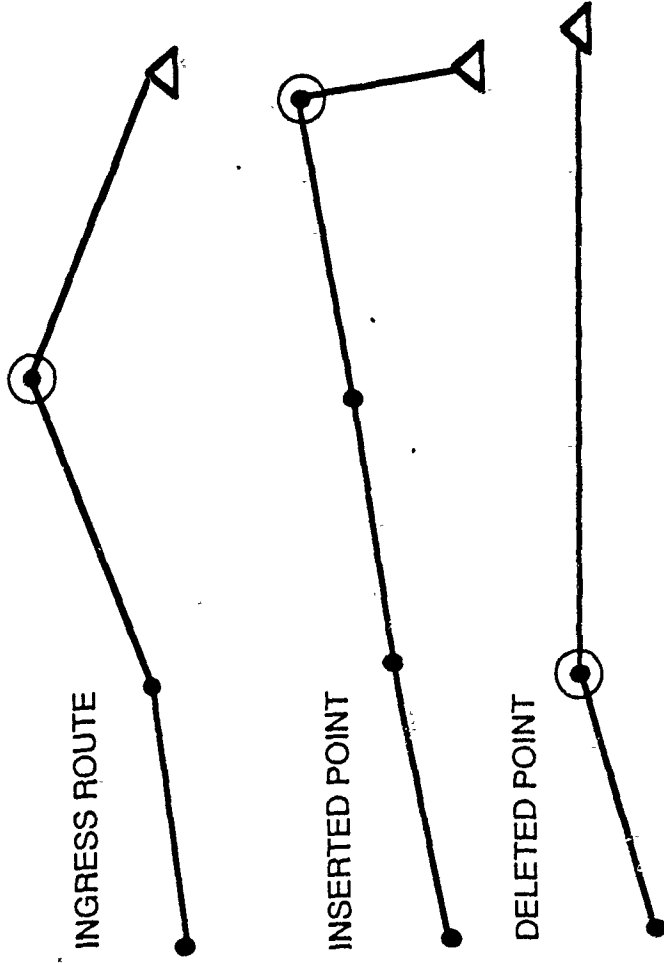
MANUAL TEXT SUMMARY

MISSION = 00LC303 OH-58D INGRESS MODE = COMMAND
WP = 1 BRVE 32U NA64265952 TIME = 0000 REM FUEL = 940
PREV LEG: FUEL USED = 000 DIST = 0.0 DANG = 0.0 HEAD = 0.0
ROUTE TOTALS: FUEL USED = 635 DIST = 144.5 DANG = 158.4

TO CHOOSE AN OPTION:
PLACE CROSSHAIRS IN COMMAND BOX & HIT A BUTTON ON MOUSE
INGRESS PORTION OF ROUTE DISPLAYED

OPERATION OF INSERT AND DELETE POINTS

+ CURSOR POSITION



LESSON 7 OBSERVING MULTIPLE ROUTE COORDINATION
NOTE TAKING LESSON NO. 7

I. INTRODUCTION

II. GETTING INTO TIME PHASE

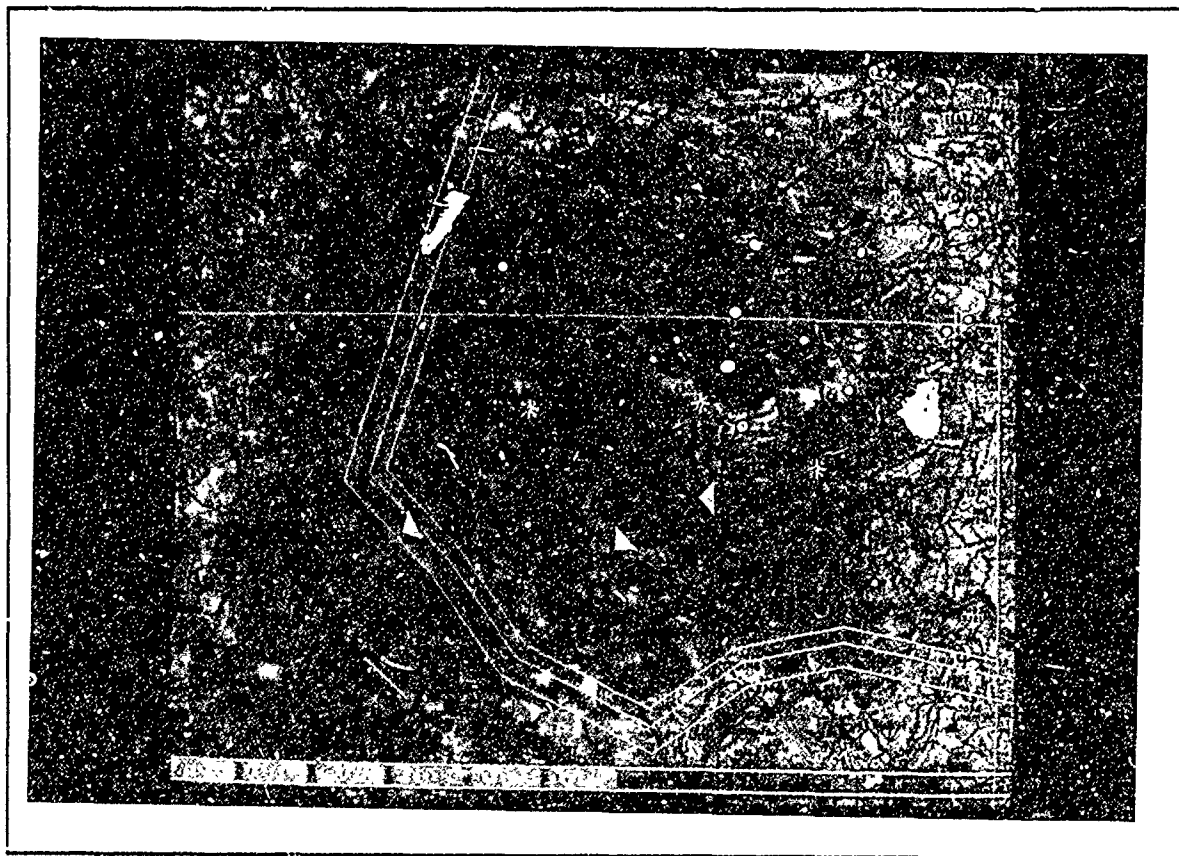
A. Menus

B. Command boxes

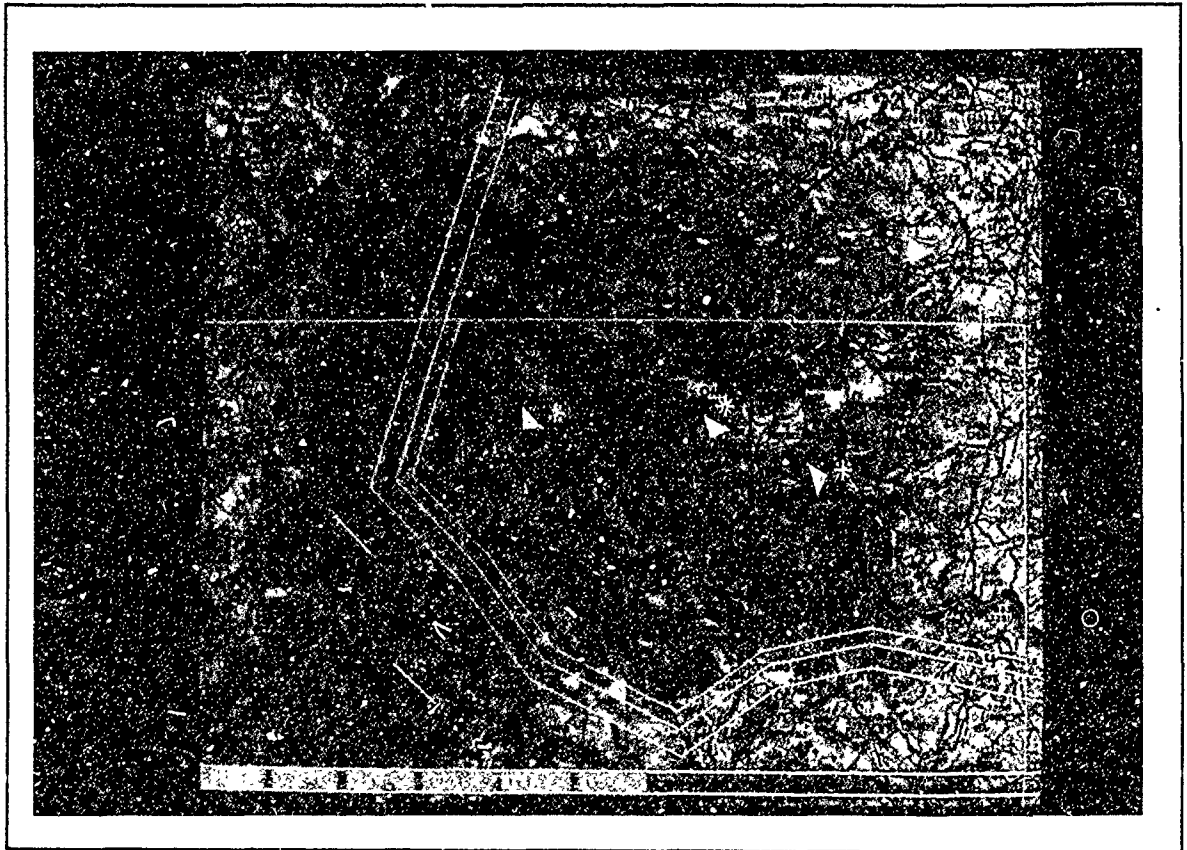
III. COMMAND BOXES

A. Advance





B. Reverse



C Start

D Increment

E Help

F Abort

IV. THE TEXT EXPLANATION

A. Display details

B. Mission numbers

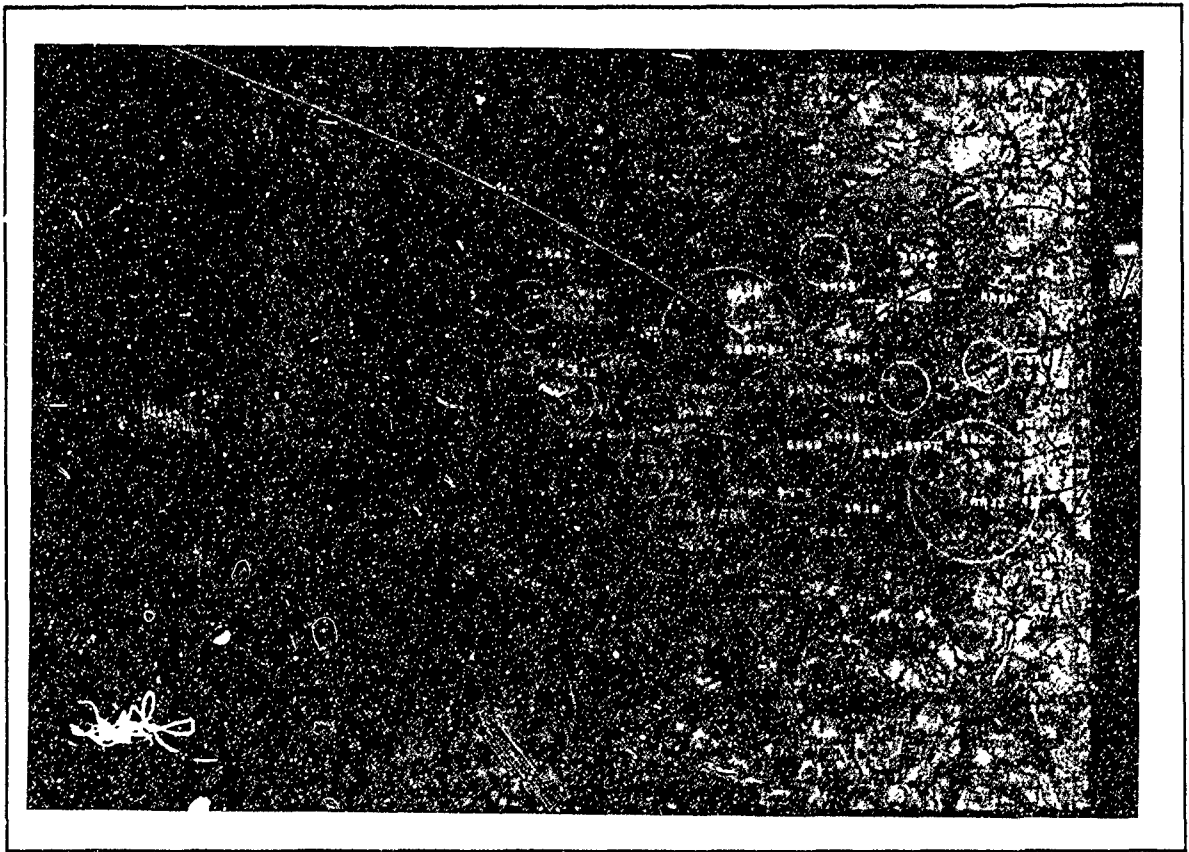
LESSON 8 SUPRESSING THREATS AND MODIFYING ROUTES
NOTE TAKING SHEET NO. 8

I. INTRODUCTION



II. THREAT SUPPRESSION

A. Threat identification



B. How to reroute



C. Save

D. Display

LESSON 9 CREATING AND UPDATING A STATESPACE
NOTE TAKING SHEET NO. 9

I. INTRODUCTION

II. DATA SOURCES

A. ASCII file

B. LOCE

C. Updates

D. Text menus

III. CULLING AND ADDING THREATS

A. Location

B. Time of Report

C. Uncertainty

D. Movement

E. Updating

IV. MANUALLY GOVERNED PURGES

A. By type

B. By time

C. By type and time

SUPR MAIN MENU

VR220 Terminal

KB

TMDL NREC, LREC= 16 1126
MAS1 = 8 5 121 156
TOBS = 3620400 1 1 1
MASK = 1 1 185 118
IHDR= 8. 49. 12. 51. 600 1200 8 16
CPUTIM, WALLTIM, PAGEFLTS= 0.030 0.029 0.000
CPUTIM, WALLTIM, PAGEFLTS= 0.040 0.070 0.000
UNCLASSIFIED US ARMY

SUPR MAIN : SELECT COMMAND P. 1 OF 1

F1--DATABASE - DATA BASE COMMANDS (DA)
F2--UPDATE - UPDATE THREAT SCENARIO (UP)
F3--PURGE - PURGE THREATS FROM SCENARIO (PU)
F4--LOCE - PREPROCESS LOCE INTELL DATA (LO)
F5--SPECIAL - SPECIAL PROGRAMMER OPTIONS (SP)
F6--QUIT - EXIT SUPR (QU)

S1--HELP :S2--NEXT PAGE :S3--GO TO 1ST PAGE :S4--FIND A STRING
S5--GO TO PAGE :S6--GRAPHICS ON/OFF:S7--MAIN MENU :S8--MENU BACKUP

UNCLASSIFIED US ARMY

THREAT LOCATION INFORMATION

SA7A 1200M	SA-7 1000M 090.0	010203Z504900.0N0102900.0E
SA3A 800M	SA-3 600M 175.0	010203Z505100.0N0101100.0E
SA1A 1000M	SA-11 600M 350.0	010203Z504400.0N0102000.0E
SA4A 900M	SA-14 500M 040.0	010203Z503800.0N0101300.0E
SA7C 800M	SA-7 600M 315.0	010203Z502100.0N0103800.0E
CA01 2000M	CONV ARM 1000M 005.0	010203Z503700.0N0111400.0E
CA02 1000M	CONV ARM 600M 090.0	010203Z504900.0N0125800.0E
AA14 600M	LAND ROLL 400M 120.0	010203Z504100.0N0100900.0E
SA9F 800M	SA-9 600M 180.0	010203Z504900.0N0110800.0E
6E01 750M	SQUATEYE 500M 340.0	010203Z505000.0N0101000.0E
SA66 900M	SA-6 600M 180.0	010203Z505300.0N0101300.0E
AA15 900M	FLAP WHEEL 800M 020.0	010203Z503800.0N0101300.0E

THREAT UPDATE RULES

CASE	SUPR ACTION
Identical report Same report with minor modification Same report with significant movement	Ignored, no change to statespace. If location change is small and threat type is squatter or fixed, update uncertainty and time of report. Do not recalculate statespace. Considered as two entities and added into the statespace.
All threats inside the statespace are purged from the statespace by LOCE when twice the dwell time of their threat type has passed since their time of last reporting.	

PURGE TYPE MENU

KB

V1220 Terminal

UNCLASSIFIED US ARMY

UNCLASSIFIED US ARMY

PURGE : EITHER SELECT A THREAT TYPE TO PURGE OR P. 1 CF 2
SPECIFY THAT ALL THREAT TYPES ARE TO BE PURGED

- F1--ALL - PURGE ALL THREAT TYPES (AL)
- F2--CONV ARM - CONVENTIONAL ARMS (2)
- F3--57MM GUN - 57MM GUIDED AA GUN (3)
- F4--ZSU-23-4 - ZSU-23-4 MOBILE AA GUN (4)
- F5--SA-2 - SA-2/FAN SONG SAM (5)
- F6--SA-3 - SA-3/LOW BLOW SAM (6)
- F7--SA-4 - SA-4/PAT HAND SAM (7)
- F8--SA-6 - SA-6/STRAIGHT FLUSH SAM (8)

- S1--HELP :S2--NEXT PAGE :S3--GO TO 1ST PAGE :S4--FIND A STRING
- S5--GO TO PAGE :S6--GRAPHICS ON/OFF:S7--MAIN MENU :S8--MENU BACKUP

UNCLASSIFIED US ARMY

PURGE TIME MENU

VT220 Terminal

KB

S1--HELP :S2--NEXT PAGE :S3--GO TO 1ST PAGE :S4--FIND A STRING
S5--GO TO PAGE :S6--GRAPHICS ON/OFF:S7--MAIN MENU :S8--MENU BACKUP

UNCLASSIFIED US ARMY

UNCLASSIFIED US ARMY

PURGE TIME EITHER ENTER DATE/TIME FOR PURGING P. 1 OF 1
OBSOLETE THREATS OR SPECIFY THAT THREATS ARE
TO BE PURGED REGARDLESS OF OBSOLESCENCE

F1--WHENEVER - PURGE THREATS REGARDLESS OF LAST REPORT TIME (WH)

S1--HELP :S2--NEXT PAGE :S3--GO TO 1ST PAGE :S4--FIND A STRING
S5--GO TO PAGE :S6--GRAPHICS ON/OFF.S7--MAIN MENU :S8--MENU BACKUP

DATE/TIME SPECIFIES DAY OF MONTH, HOURS, MINUTES (ZULU); AND MUST
CONSIST OF EXACTLY 6 DIGITS WITH NO SPACES: ddhmm (example: 071200)

UNCLASSIFIED US ARMY