

AD-A249 991 to
etc



UNCLASSIFIED

2

DTIC

ELECTE

MAY 7 1992

UNLIMITED
DISTRIBUTION

DRESS **S** **C** **D**

SUFFIELD MEMORANDUM

NO. 1376

**RAPID IMMUNOFILTRATION ASSAY OF
FRANCISELLA TULARENSIS**

by

H. Gail Thompson and William E. Lee

DISTRIBUTION STATEMENT A
Approved for public release;
Distribution Unlimited

PCN 351SQ

92-11880

March 1992



DEFENCE RESEARCH ESTABLISHMENT SUFFIELD, RALSTON, ALBERTA

WARNING
The use of this information is permitted subject to
recognition of proprietary and patent rights.

Canada

4 29 134

UNCLASSIFIED

**DEFENCE RESEARCH ESTABLISHMENT SUFFIELD
RALSTON ALBERTA**

Suffield Memorandum No. 1376

**RAPID IMMUNOFILTRATION ASSAY OF
FRANCISELLA TULARENSIS**

by

H. Gail Thompson and William E. Lee

PCN No. 351SQ

WARNING
"The use of this information is permitted subject to
recognition of proprietary and patent rights".

Accession For	
NTIS GRA&I	<input checked="" type="checkbox"/>
DTIC TAB	<input type="checkbox"/>
Unannounced	<input type="checkbox"/>
Justification	
By _____	
Distribution/	
Availability Codes	
Dist	Avail and/or Special
A-1	

UNCLASSIFIED



UNCLASSIFIED

ACKNOWLEDGEMENTS

We would like to thank John Cherwonogrodzky for his helpful discussions during the course of this work and critical review of the manuscript.

UNCLASSIFIED

UNCLASSIFIED

ABSTRACT

A rapid immunofiltration assay for a killed bacterial preparation of *Francisella tularensis* was developed. Formalin treated cells of *Francisella tularensis* were incubated with polyclonal antibody to *Francisella tularensis* and an anti-species antibody conjugated to urease. The reaction mixture was filtered through albumin coated 0.45 μm nitrocellulose membranes following incubation periods which varied from 1 to 60 min. The pH sensing capability of the detector, a light-addressable potentiometric (LAP) sensor, was employed to detect the presence of immobilized urease-conjugated antibodies. The time required for the assay was about 5 min exclusive of the incubation period. Limits of detection (LOD) of the assay, determined as a function of the incubation time were 1.2×10^5 , 5×10^4 and 3.4×10^3 cells for incubations of 1, 5 and 60 min. The speed and ease of the assays suggest that the LAP sensor technology is suitable as a detection system for a mobile field laboratory.

NON CLASSIFIÉ

RÉSUMÉ

On a mis au point une méthode de dosage par immunofiltration rapide qui s'applique à des préparations bactériennes de *Francisella tularensis* tuées. Des cellules de *Francisella tularensis* traitées à la formaline ont été incubées avec un anticorps polyclonal dirigé contre *Francisella tularensis* et un anticorps anti-spécifique conjugué à l'uréase. Après une incubation variant de 1 à 60 minutes, le mélange réactif a été filtré sur des membranes de nitrocellulose (0,45 μm) enduites d'albumine. La capacité de détection du pH propre au détecteur, un capteur potentiométrique adressable par la lumière (CPAL), a été mise à profit pour déceler la présence d'anticorps immobilisés conjugués à l'uréase. Le dosage peut être réalisé en 5 minutes environ, sans compter la période d'incubation. Les limites de détection déterminées en fonction de la durée de l'incubation, étaient de $1, 2 \times 10^5$, 5×10^4 et $3, 4 \times 10^3$ cellules pour des périodes d'incubation de 1,5 et de 60 minutes. La rapidité et la facilité de réalisation de la méthode laissent croire que le capteur potentiométrique adressable par la lumière constitue un système approprié de détection pour le laboratoire mobile de campagne.

UNCLASSIFIED

TABLE of CONTENTS

	Page
Abstract	i
Table of Contents	ii
Introduction	1
Materials and Methods	3
Results	5
Discussion	6
References	8
Table I	11
Figures 1-6	12-17

UNCLASSIFIED

INTRODUCTION

Advances in molecular biology have augmented the potential of pathogens to be deployed as BW agents. The detection of pathogens presents a major challenge to the bioanalytical capabilities of defence research. Effective protection and therapy against BW agents rest on the ability to detect and identify these threats.

Francisella tularensis, a gram-negative bacterium responsible for tularemia, has been reported in North America, Europe, Japan and Russia (1-4). Although it is largely a disease of wildlife, especially rabbits, the zoonotic nature of the bacterium make it a threat to human health (5). Clinical manifestations have been classified based on portal of entry: ulceroglandular, glandular, oculoglandular, oroglandular, oropharyngeal, typhoidal and pneumonic (6). The treatment of choice for tularemia is streptomycin sulfate (6); kanamycin sulfate, gentamicin, tetracycline hydrochloride and choramphenicol have been shown effective (7,8).

Owing to the BW threat posed by bacterial pathogens, the Canadian Forces have formulated a need for a mobile field laboratory for the identification and quantitation of pathogens and threat agents. The ideal assay system for a mobile field laboratory would be sensitive, rapid, and adaptable to a wide range of threat agents. In addition, other desirable features would include compact physical size, ruggedness (deriving from a limited number of mechanical parts) and an ease of operation with regard to the amount of time and skill required by the operator to conduct assays. A technology having strong potential for defence related bioanalysis is the light-addressable potentiometric (LAP) sensor (Figure 1) (9). The sensing component of the device is a silicon semiconductor chip which is able to monitor changes in pH caused by enzymes such as urease and penicillinase. Coupled with rapid filtration capture, and used in conjunction with enzyme immunoassay technology, the LAP sensor is a useful detection system and is able to meet

the above criteria. The LAP sensor is employed in the biosensor module of the BioChemical Detector (BCD) and has proven successful in the quantitative analysis of simulants for virus, toxin and bacteria threat agents (10-12).

This work presents an example of an assay on a LAP sensor for a killed-cell bacterial preparation, *Francisella tularensis*. The rapid quantitative immunofiltration assay described in this report was undertaken to assess the feasibility of employing the LAP sensor-based instrument for a mobile field laboratory. Formalin treated cells of *Francisella tularensis* were incubated with polyclonal antibody to *Francisella tularensis* and an anti-species antibody conjugated to urease. The cells were captured by filtering reaction mixture through albumin coated 0.45 μm nitrocellulose membranes. The time required for processing a sample in the assay system was about five minutes, exclusive of the incubation period. Limits of detection (LOD) of the assay, determined as a function of the incubation time were 1.2×10^5 , 5×10^4 and 3.4×10^3 cells for incubations of 1, 5 and 60 min.

MATERIALS AND METHODS

Bovine serum albumin (BSA), sodium chloride, sodium dihydrogen phosphate, Tween 20, Triton X-100, phosphate buffered saline (PBS) anti-rabbit IgG (goat) urease conjugate, and urea were purchased from Sigma Chemical Co. (St Louis, MO) and used without further purification. Streptavidin was obtained from Scripps Laboratories (San Diego, CA). It was reconstituted in distilled water to yield a stock concentration of 10 mg/mL. Polyclonal antibodies to *Francisella tularensis* from rabbit (purified by caprylic acid and ammonium sulfate precipitations) were a generous gift of the Molecular Biology Group, DRES. Immunoelectrophoresis performed by the Molecular Biology Group indicated a high IgG content. Protein concentration of the antibody preparation was determined spectrophotometrically to be 3.1 mg/mL by means of a BCA protein assay kit (Pierce Chemical Co., Rockford, IL) and bovine plasma IgG standards (BioRad, Mississauga, ON). The antigen, *Francisella tularensis*, LVS strain, was acquired from U. S. Army Medical Research Institute for Infectious Diseases (Frederick, MD), deactivated with 0.5% formaldehyde and stored as a lyophilized powder. It was reconstituted in PBS and sonicated (Soniprep sonicator model 150, power setting 4) for four cycles of 15 sec bursts followed by 45 sec cooling on ice.

For the immunofiltration assays, wash solution consisted of 150 mM NaCl, 10 mM phosphate buffer, pH 6.5, plus 0.2% Tween 20 detergent. The dilution buffer was the wash solution titrated to pH 7.0, containing 1% BSA and 0.25% Triton X-100. The substrate solution for the enzyme assays was wash solution containing 100 mM urea.

Apparatus

The apparatus for these assays was a commercially available LAP sensor, marketed under the name Threshold UnitTM. It was purchased from the manufacturer, Molecular Devices Corp. (Menlo Park, CA). The instrument was controlled by an IBM PS/2 model 30 microcomputer and custom designed software supplied by Molecular Devices Corp. The design of the Threshold Unit allowed eight samples to be tested simultaneously. Nitrocellulose membrane filters (0.44 μm pore size) coated with BSA were purchased from Molecular Devices Corp.

Immunofiltration Assay

Figure 2 depicts the scheme of an immunofiltration assay for *Francisella tularensis*. Reagent solutions consisted of 3 μL anti-*Francisella tularensis* and 10 μL anti-rabbit IgG in 10 mL diluent solution. An aliquot (150 μL) of reagent solution was added to each sample (100 μL) of killed suspended cells, mixed thoroughly and allowed to incubate at room temperature. After the required incubation time had elapsed, a portion (150 μL) of the reaction mixture was delivered to a well of the filtration assembly and filtered through the membrane at 250 $\mu\text{L min}^{-1}$. After the filtration was completed, 500 μL of wash buffer was added to the well and the rate of filtration was increased to 750 $\mu\text{L min}^{-1}$.

The membrane stick containing the immobilized antigen-antibody complexes was removed from the filter assembly and inserted into reader compartment of the Threshold Unit which contained the LAP sensor and the substrate solution. The membrane was pressed against the silicon surface of the sensor by a mechanical plunger. The apparatus was constructed so that the spots (3 mm dia.) on the membrane which contained the immobilized antigen/antibody complexes aligned with the sensing areas on the silicon chip. Hydrolysis of urea to carbon

dioxide and ammonia at the membrane-sensor surface interface resulted in an increase of pH which was detected as a change in surface electropotential. The membrane was monitored for enzyme induced pH change for one minute. The data was collected and stored on the microcomputer using software designed by Molecular Devices Corp. The rate of change of pH at the surface of the silicon sensor was monitored by the rate of change with respect to time of the surface potential as $\mu\text{v}/\text{sec}$.

RESULTS

Assays of *Francisella tularensis* were carried out with incubation times of 1, 5 and 60 min. The results of a 1 min incubation assay of *Francisella tularensis* are presented in Figure 3. The standards ranged from 100 to 1500 ng per well and were run simultaneously on a single membrane stick. Each data point represents the mean of three consecutive assays performed with the same reagents. The data, $\mu\text{v}/\text{sec}$ versus ng of antigen was well represented by a linear plot ($r^2 = 0.998$). The errors associated with the individual points on the calibration curve were about 10%. The LOD taken to be the intersection of the calibration curve with the mean background (output of the LAP sensor for reagents only, zero *Francisella tularensis* antigen) plus two standard deviations (SD) of the mean background was about 130 ng per well or 1.7×10^5 cells per well (based on a weight of 8×10^{-13} g per cell (20)).

A 5 min incubation assay of *Francisella tularensis* was carried out in a similar manner with standards ranging from 75 to 1200 ng per well (Figure 4). Employing the criterion as above, the LOD was determined to be about 56 ng (7.5×10^4 cell) per well. For a sixty minute assay (Figure 5), a LOD of 3.8 ng (5.1×10^3 cells) was obtained. In terms of relative detectability, the assays of 5 and 60 min displayed an increase of 2.3- and 34-fold, respectively. The results are summarized in Table I.

Quantitations of *Francisella tularensis* were carried out by presenting samples to the LAP sensor. The recovered values of *Francisella tularensis* were on average within 4% of the spiked amounts. A linear regression (Figure 6) yielded a high correlation ($r^2 = 0.9996$) between spiked and recovered quantities.

DISCUSSION

In the assay for *Francisella tularensis*, bacterial cells were captured onto solid phase nitrocellulose membrane by filtration. The time required for immobilization of bacterial cells via filtration was approximately 1-2 min, a significant reduction over that of microtiter plates (typically 1 h) wherein the rate of immobilization is governed by diffusion or gravity. The immunocomplexes of antibody reagents and antigen were formed in a one-step homogeneous incubation further reducing the number of steps and the total time required per assay. In practice the time per assay was about 5 min plus the time allotted for incubation. In addition, the solid support nitrocellulose membranes required none of the pre-assay preparation required for microtiter plates, namely capture antibody coating and blocking. The LOD of a 5 min incubation immunofiltration assay for *Francisella tularensis* proved to be as low as that for a 4 h colorimetric microtiter plate assay (13).

The immunoreagents employed for the assay were an anti-*Francisella tularensis* polyclonal IgG (rabbit) and a commercially available anti-rabbit IgG covalently linked to urease. No chemical modifications, conjugations or purifications of antibodies were required on the part of the user. The LAP sensor is adaptable to other antigens including viruses and proteins. For noncellular antigens, immobilization onto nitrocellulose is accomplished through biotin-streptavidin interactions. Assays of Newcastle Disease Virus and mouse immunoglobulin G yielded LODs of about 3 ng and 10 pg, respectively, for incubations of 1 h (10,11).

The detection system described in this work is fully capable of providing rapid clinical diagnosis of bacterial diseases, such as tularemia in the field. Enzyme-linked immunosorbent assays (ELISAs) for serodiagnosis of tularemia have been developed for anti-*Francisella tularensis* antibodies (14), whole cells (15,16), bacterial antigens (14,17), lipopolysaccharides (3,14) and outer membrane proteins (16,18,19). On the LAP sensor, assays of these clinical indicators can be completed within a period of about thirty minutes.

The physical dimensions of the LAP sensor system and the associated apparatus are about 0.05 m³ (2 cu. ft) and 7 kg (15 lb). It is a commercially available unit with relatively few moving parts and as a consequence is rugged and durable. The principal mechanical features are a vacuum pump to facilitate filtration and a plunger to press the membrane against the surface of the silicon chip. The sensor chip, itself, is contained in a plastic compartment (10 x 10 x 3 cm) and can be considered to be a consumable item, replaced at regular intervals (2 to 8 weeks).

The LAP sensor is the detection system of the BioChemical Detector (BCD). Since the BCD is a self-contained automated detector, the physical shape and size are different than the apparatus employed here and the final BCD model would most likely not be suitable as a laboratory device. Nevertheless, the homology of these systems is great, especially for the immunoreagents. Advances made in procuring and screening of antibodies for the BCD project are available *gratis* to a field detector. Furthermore, if the BCD is to function as a remote alarm system, a complementary identification and quantitation would be required in a field laboratory and there are definite advantages for employing the same immunoassay format at the remote and mobile sites. The assays described in this report were performed in a laboratory environment in the absence of contaminants or interfering agents. The object of this report was to demonstrate that the LAP sensor detection system, combined with enzyme immunoassay technology has potential for mobile field laboratory applications.

REFERENCES

1. Larsen, C. L., "Tularemia" in Tice's Practice of Medicine, vol 3, Harper & Row Publishers Inc., Hagerstown, MD pp 663-676
2. Hopla, C. E., "The Ecology of Tularemia", Adv. Vet. Sci. Comp. Med., 18 (1974) pp 25-53.
3. Carlsson, H. E., Lindberg, A. A., Hederstedt, B., Karlsson, K.-A. and Agell, B. O., "Enzyme-Linked Immunosorbent Assay for Immunological Diagnosis of Human Tularemia", J. Clin. Microbiol., 10 (1979) pp 6715-621.
4. Francis, E., "Tularemia", J. Amer. Med. Assoc., 84 (1925) pp 1243-1250.
5. Warring, W. B. and Ruffin, J. S., "A Tick-Borne Epidemic of Tularemia", New Engl. J. Med., 243 (1946) pp 137-140.
6. Sanford, J. P., "Tularemia", J. Amer. Med. Assoc., 250 (1983) pp 3225-3226.
7. Alford, R. H., John, J. T. and Bryant, R. E., "Tularemia Treated Successfully with Gentamicin", Am. Rev. Respir. Dis., 106 (1972) pp 265-268.
8. Sawyer, W. D., Dangerfield, H. G. and Hogge, A. L., "Antibiotic Prophylaxis and Therapy in Airborne Tularemia", Bacteriol. Rev., 30 (1966) pp 542-548.

9. Hafeman, D. G., Parce, J. W. and McConnell, H. M., "Light-Addressable Potentiometric Sensor for Biochemical Systems", *Science* 240 (1988) pp 1182-1185.
10. Lee, W. E., Wong, J. P. and Fulton, R. E., "Light-Addressable Potentiometric (LAP) Sensor Assay of Newcastle Disease Virus (U)", Suffield Report 553, Defence Research Establishment Suffield, April 1991, UNCLASSIFIED.
11. Thompson, H. G. and Lee, W. E., "Immunoassay of Mouse Immunoglobulin G by a Light-Addressable Potentiometric Sensor (U)", Suffield Report 554, Defence Research Establishment Suffield, April 1991, UNCLASSIFIED.
12. Thompson, H. G., and Lee, W. E., unpublished results.
13. Nagata, L., personal communication.
14. Vijanen, M. K., Nurmi, T. and Salminen, A., "Enzyme-Linked Immunosorbent Assay (ELISA) with Bacterial Sonicate Antigen for IgM, IgA, and IgG Antibodies to *Francisella tularensis*: Comparison with Bacterial Agglutination Test and ELISA with Lipopolysaccharide Antigen", *J. Infect. Dis.*, 148 (1983) pp 715-720.
15. Mersheryakova, I. S., Umnova, N. S., Shakhanina, L. K. and Pavlova, I. P. "ELISA in the Detection of *Francisella-tularensis*" *Zh. Mikrobiol. Epidemiol. Microbiol.*, 0 (2) (1986) 87-91.

16. Siddiqui, Y. M., Fulton, R. E., Knodel M. H. and Bhatti, A. R., " Sensitive Fluoregenic Enzyme-Linked Immunosorbent Assay for Identification of *Francisella-tularensis*", 90th Annual Meeting Amer. Soc. Microbiol., Anaheim, CA, May 1990.
17. Umnova, N. S., Shakhanina, L. K., Pavlova, I. P. and Mersheryakova, I. S., "Use of Solid Phase ELISA for Determination of Tularemia Antigen", Zh. Mikrobiol. Epidemiol. Microbiol., 0 (5) (1984) pp 88-92.
18. Bevanger, L., Maeland, J. A. and Naess, A. I., "Agglutins and Antibodies to *Francisella tularensis* Outer Membrane Antigens in the Early Diagnosis of the Disease during an Outbreak of Tularemia", J. Clin. Microbiol., 26 (1988) pp 433-437.
19. Bevanger, L., Maeland, J. A. and Naess, A. I., "Competitive Enzyme Immunoassay for Antibodies to a 43,000-Molecular-Weight *Francisella tularensis* Outer Membrane Protein for the Diagnosis of Tularemia", J. Clin. Microbiol., 27 (1989) pp 922-926.
20. Cherwonogrodzky, J., personal communication.

Table I. Summary of Results of Immunofiltration Assay

incubation time	LOD		Relative Detectability
min	ng	cells ¹	
1	130	1.5×10^5	1.0
5	56	7.5×10^4	2.3
60	3.8	5.1×10^3	34

¹based on a weight of 8×10^{-13} g per cell (20).

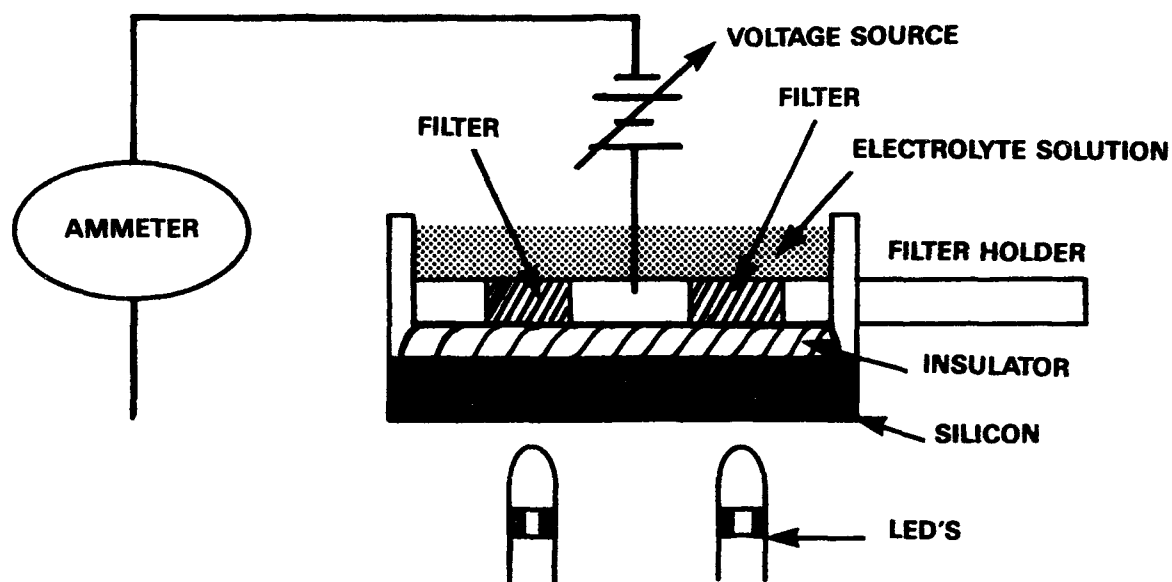


Figure 1

SCHEMATIC DIAGRAM OF SILICON SENSOR DESCRIBED BY HAFEMAN ET AL. (9). THE SILICON IS COVERED WITH AN INSULATOR WHICH SEPARATES IT FROM THE ELECTROLYTE SOLUTION CONTAINING ENZYME SUBSTRATE. THE ELECTRICAL POTENTIAL ON THE SURFACE OF THE INSULATOR (LOCATED UNDER THE FILTERS) IS MEASURED VIA A LIGHT-GENERATED ALTERNATING CURRENT. BY ELIMINATING THE LIQUID ABOVE THE MEMBRANE WITH A PLUNGER (NOT SHOWN), REDUCED VOLUME AND THUS GREATER SENSITIVITY ARE ACHIEVED. LED, LIGHT-EMITTING DIODE. AFTER LIBBY AND WADA, J. CLIN. MICROBIOL., 27, 1456-1459 (1989).

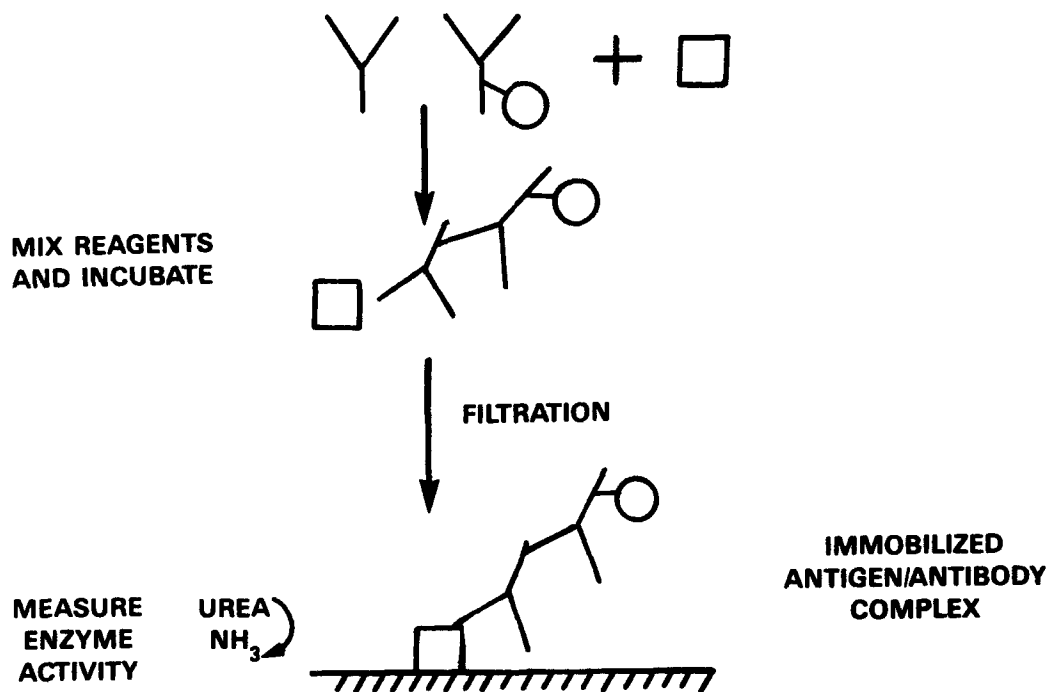


Figure 2
REACTION SCHEME OF THE LAP SENSOR IMMUNOFILTRATION ASSAY.

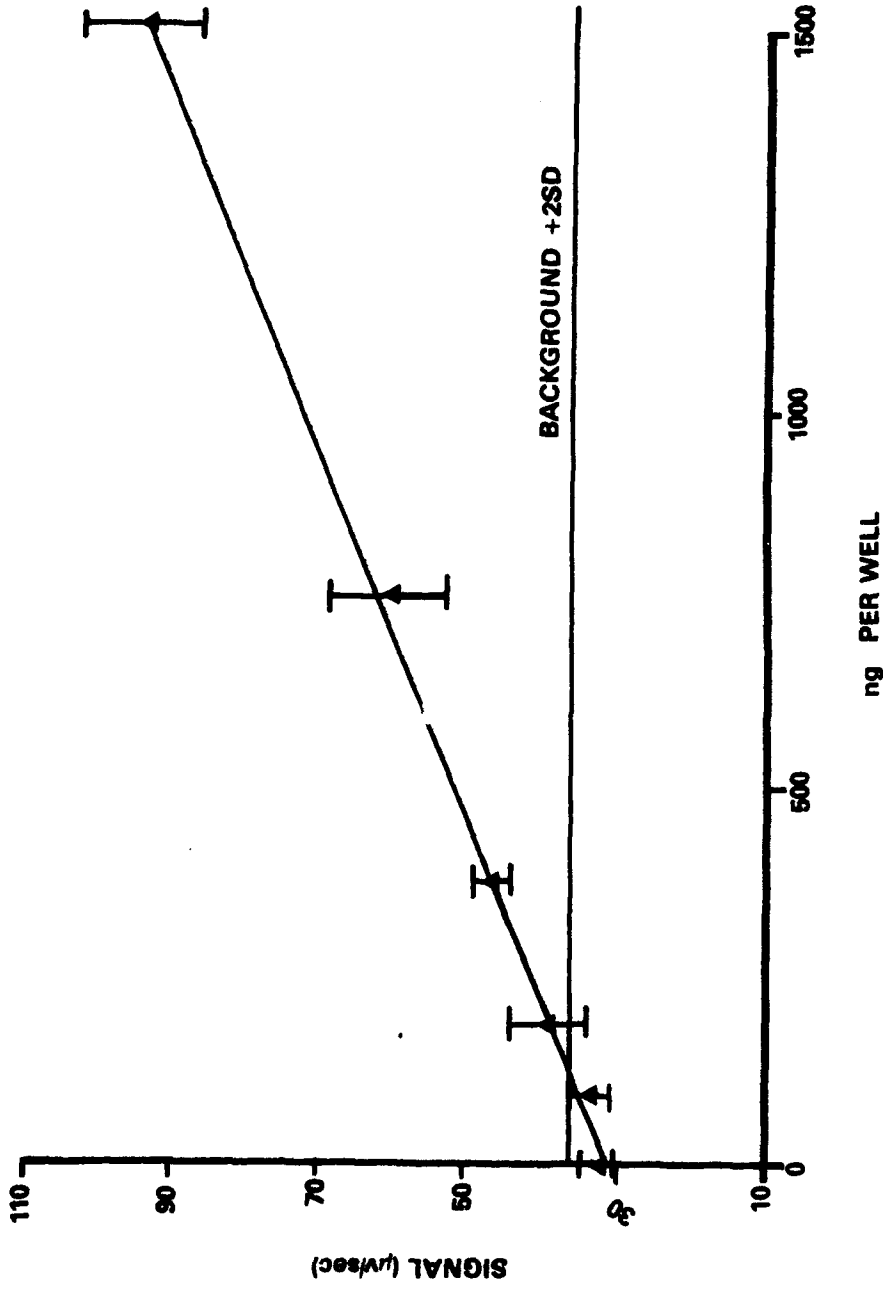


Figure 3

1 min ASSAY OF *Francisella tularensis*. THE ERROR BARS REPRESENT \pm S.D. ($n = 4$, $r^2 = 0.998$)

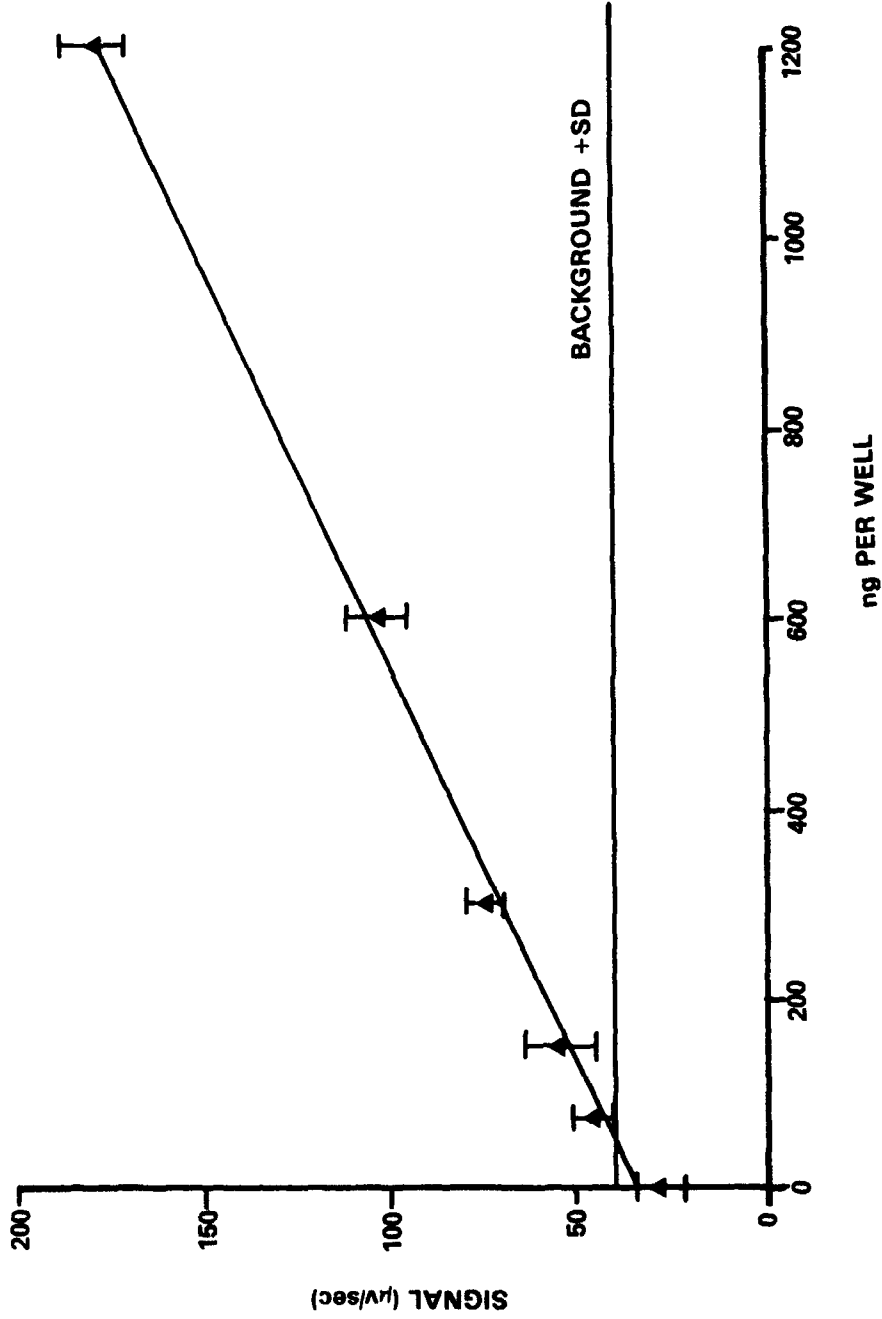


Figure 4

5 min ASSAY OF *Francisella tularensis*. THE ERROR BARS REPRESENT \pm S.D. ($n = 4$, $r^2 = 0.998$).

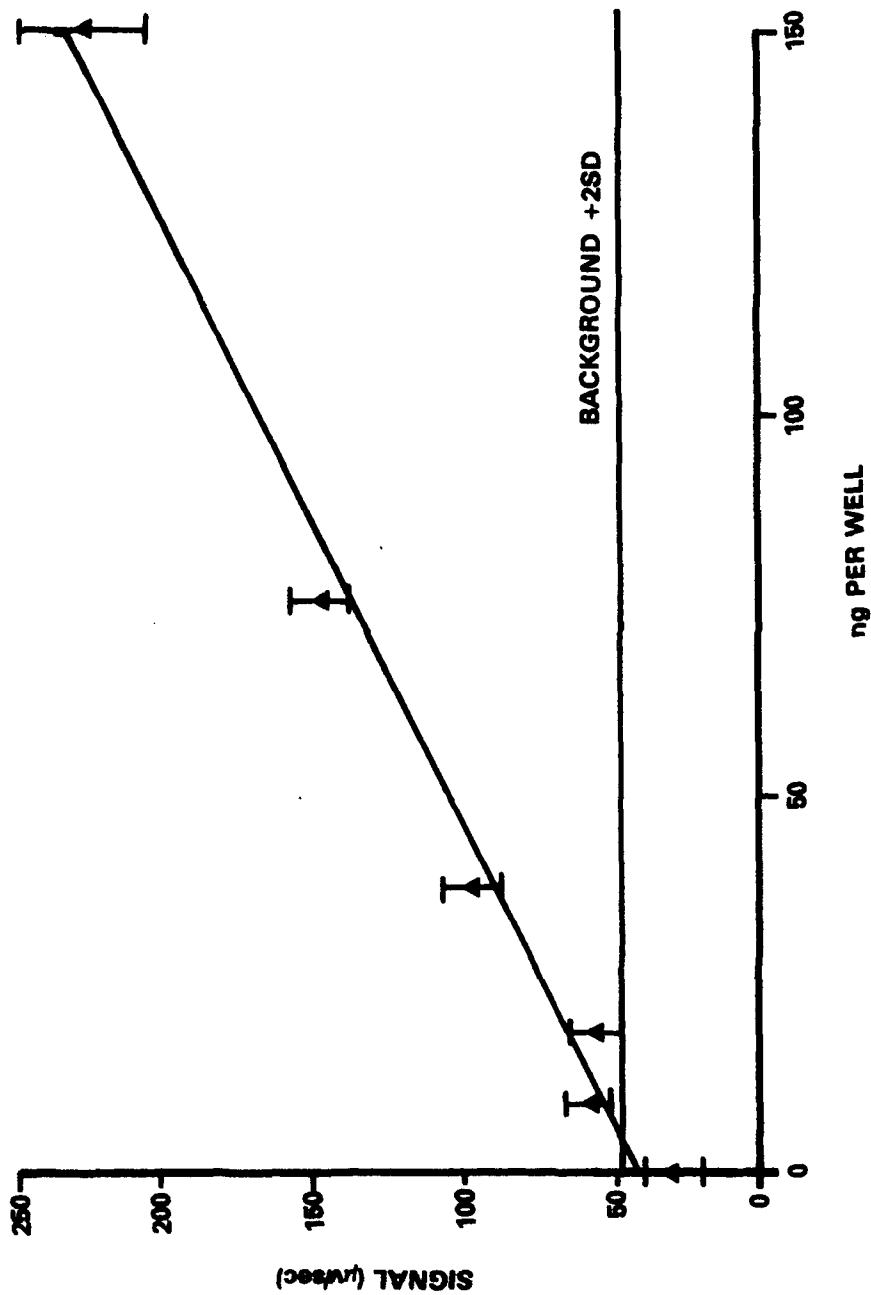


Figure 5

60 min ASSAY OF *Francisella tularensis*. THE ERROR BARS REPRESENT \pm S.D. ($n = 4$, $r^2 = 0.991$)

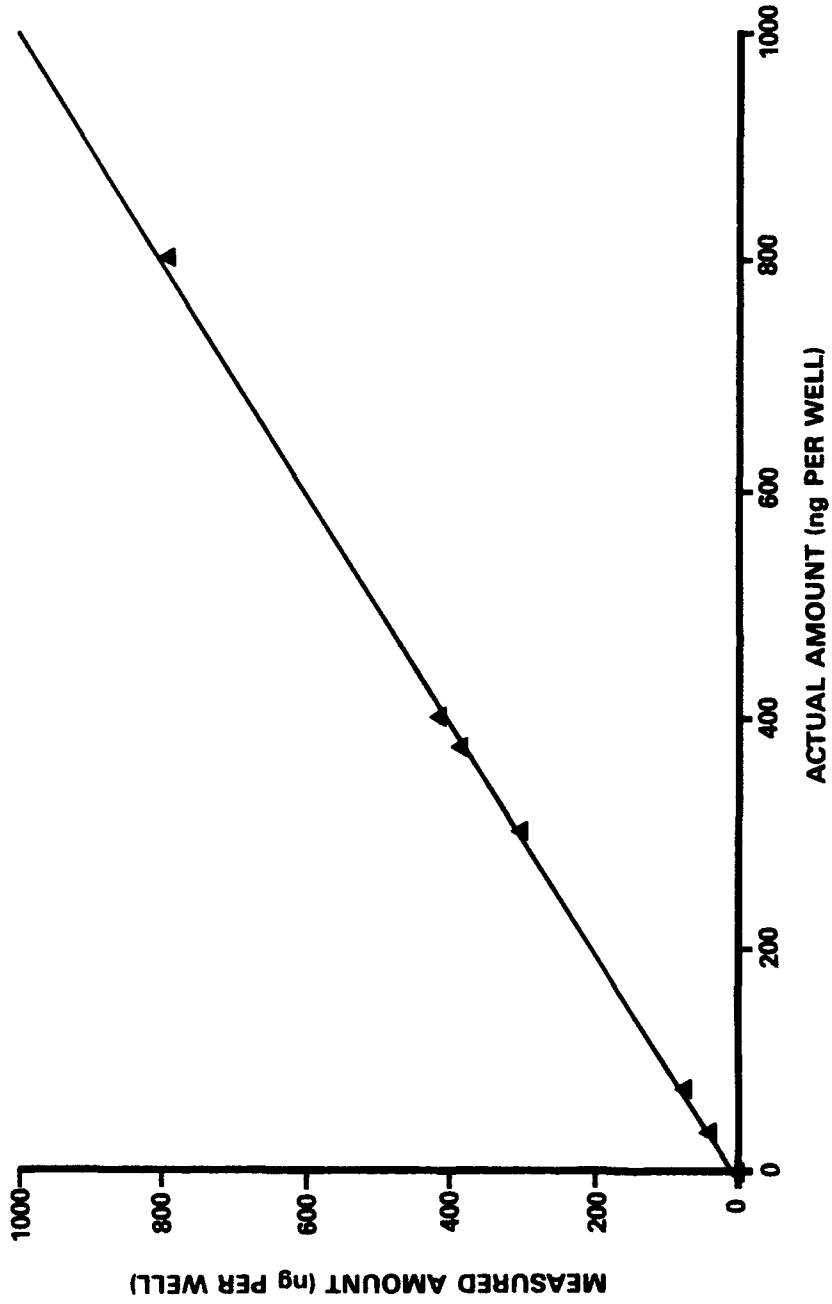


Figure 6

QUANTITATION OF UNKNOWN SAMPLES OF *Francisella tularensis* ($r^2 = 0.999$).

DOCUMENT CONTROL DATA

(Security classification of title, body of abstract and indexing annotation must be entered when the overall document is classified)

1. ORIGINATOR (the name and address of the organization preparing the document. Organizations for whom the document was prepared, e.g. Establishment sponsoring a contractor's report, or tasking agency, are entered in section 8.) Defence Research Establishment Suffield Box 4000 Medicine Hat, Alberta T1A 8K6		2. SECURITY CLASSIFICATION (overall security classification of the document, including special warning terms if applicable) Unclassified	
3. TITLE (the complete document title as indicated on the title page. Its classification should be indicated by the appropriate abbreviation (S,C,R or U) in parentheses after the title.) Rapid Immunofiltration Assay of Francisella Tularensis (U)			
4. AUTHORS (Last name, first name, middle initial. If military, show rank, e.g. Doe, Maj. John E.) Thompson, H. Gail and Lee, William E.			
5. DATE OF PUBLICATION (month and year of publication of document) March 1992		6a. NO. OF PAGES (total containing information. Include Annexes, Appendices, etc.) 18	6b. NO. OF REFS (total cited in document) 20
6. DESCRIPTIVE NOTES (the category of the document, e.g. technical report, technical note or memorandum. If appropriate, enter the type of report, e.g. interim, progress, summary, annual or final. Give the inclusive dates when a specific reporting period is covered.) Suffield Memorandum			
8. SPONSORING ACTIVITY (the name of the department project office or laboratory sponsoring the research and development. Include the address.) Defence Research Establishment Suffield Box 4000 Medicine Hat, Alberta T1A 8K6			
9a. PROJECT OR GRANT NO. (if appropriate, the applicable research and development project or grant number under which the document was written. Please specify whether project or grant) 351 SQ		9b. CONTRACT NO. (if appropriate, the applicable number under which the document was written)	
10a. ORIGINATOR'S DOCUMENT NUMBER (the official document number by which the document is identified by the originating activity. This number must be unique to this document.) SM 1376		10b. OTHER DOCUMENT NOS. (Any other numbers which may be assigned this document either by the originator or by the sponsor)	
11. DOCUMENT AVAILABILITY (any limitations on further dissemination of the document, other than those imposed by security classification) (X) Unlimited distribution () Distribution limited to defence departments and defence contractors; further distribution only as approved () Distribution limited to defence departments and Canadian defence contractors; further distribution only as approved () Distribution limited to government departments and agencies; further distribution only as approved () Distribution limited to defence departments; further distribution only as approved () Other (please specify):			
12. DOCUMENT ANNOUNCEMENT (any limitation to the bibliographic announcement of this document. This will normally correspond to the Document Availability (11). However, where further distribution (beyond the audience specified in 11) is possible, a wider announcement audience may be selected.)			

UNCLASSIFIED

13. **ABSTRACT** (a brief and factual summary of the document. It may also appear elsewhere in the body of the document itself. It is highly desirable that the abstract of classified documents be unclassified. Each paragraph of the abstract shall begin with an indication of the security classification of the information in the paragraph (unless the document itself is unclassified) represented as (S), (C), (R), or (U). It is not necessary to include here abstracts in both official languages unless the text is bilingual).

A rapid immunofiltration assay for a killed bacterial preparation of *Francisella tularensis* was developed. Formalin treated cells of *Francisella tularensis* were incubated with polyclonal antibody to *Francisella tularensis* and an anti-species antibody conjugated to urease. The reaction mixture was filtered through albumin coated 0.45 μ m nitrocellulose membranes following incubation periods which varied from 1 to 60 min. The pH sensing capability of the detector, a light-addressable potentiometric (LAP) sensor, was employed to detect the presence of immobilized urease-conjugated antibodies. The time required for the assay was about 5 minutes exclusive of the incubation period. Limits of detection (LOD) of the assay,⁴ determined as a function of the incubation time were 1.2×10^5 , 5×10^4 , and 3.4×10^3 cells for incubations of 1, 5, and 60 minutes. The speed and ease of the assays suggest that the LAP sensor technology is suitable as a detection system for a mobile field laboratory.

14. **KEYWORDS, DESCRIPTORS or IDENTIFIERS** (technically meaningful terms or short phrases that characterize a document and could be helpful in cataloging the document. They should be selected so that no security classification is required. Identifiers, such as equipment model designation, trade name, military project code name, geographic location may also be included. If possible keywords should be selected from a published thesaurus. e.g. Thesaurus of Engineering and Scientific Terms (TEST) and that thesaurus-identified. If it is not possible to select indexing terms which are Unclassified, the classification of each should be indicated as with the title.)

Immunofiltration

Filtration

Immunoassay

Antibody

Francisella tularensis

Bacteria

Urease

Nitrocellulose