

2

AD-A253 985



IDA DOCUMENT D-796

A USER'S MANUAL FOR
THE REVISED DEFENSE TRANSLATOR MODEL

Thomas P. Frazier, *Project Leader*
Jeffrey B. Tate

June 1990

DTIC
ELECTE
JUL 21 1992
S B D

Prepared for
Office of the Assistant Secretary of Defense
(Program Analysis and Evaluation)

Approved for public release; distribution unlimited.

92-19166



INSTITUTE FOR DEFENSE ANALYSES
1801 N. Beauregard Street, Alexandria, Virginia 22311-1772

DEFINITIONS

IDA publishes the following documents to report the results of its work.

Reports

Reports are the most authoritative and most carefully considered products IDA publishes. They normally embody results of major projects which (a) have a direct bearing on decisions affecting major programs, (b) address issues of significant concern to the Executive Branch, the Congress and/or the public, or (c) address issues that have significant economic implications. IDA Reports are reviewed by outside panels of experts to ensure their high quality and relevance to the problems studied, and they are released by the President of IDA.

Group Reports

Group Reports record the findings and results of IDA established working groups and panels composed of senior individuals addressing major issues which otherwise would be the subject of an IDA Report. IDA Group Reports are reviewed by the senior individuals responsible for the project and others as selected by IDA to ensure their high quality and relevance to the problems studied, and are released by the President of IDA.

Papers

Papers, also authoritative and carefully considered products of IDA, address studies that are narrower in scope than those covered in Reports. IDA Papers are reviewed to ensure that they meet the high standards expected of refereed papers in professional journals or formal Agency reports.

Documents

IDA Documents are used for the convenience of the sponsors or the analysts (a) to record substantive work done in quick reaction studies, (b) to record the proceedings of conferences and meetings, (c) to make available preliminary and tentative results of analyses, (d) to record data developed in the course of an investigation, or (e) to forward information that is essentially unanalyzed and unevaluated. The review of IDA Documents is suited to their content and intended use.

The work reported in this document was conducted under contract MDA 903 89 C 0003 for the Department of Defense. The publication of this IDA document does not indicate endorsement by the Department of Defense, nor should the contents be construed as reflecting the official position of that Agency.

This Document is published in order to make available the material it contains for the use and convenience of interested parties. The material has not necessarily been completely evaluated and analyzed, nor subjected to formal IDA review.

UNCLASSIFIED

REPORT DOCUMENTATION PAGE			<i>Form Approved</i> OMB No. 0704-0188	
<small>Public reporting burden for this collection of information is estimated to average 1 hour per response, including the time for reviewing instructions, searching existing data sources, gathering and maintaining the data needed, and completing and reviewing the collection of information. Send comments regarding this burden estimate or any other aspect of this collection of information, including suggestions for reducing this burden, to Washington Headquarters Services, Directorate for Information Operations and Reports, 1215 Jefferson Davis Highway, Suite 1204, Arlington, VA 2220-4302, and to the Office of Management and Budget, Paperwork Reduction Project (0704-0188), Washington, DC 20503.</small>				
1. AGENCY USE ONLY (Leave blank)	2. REPORT DATE June 1990	3. REPORT TYPE AND DATES COVERED Final Report, Oct 1988 - Sep 1989		
4. TITLE AND SUBTITLE A User's Manual for the Revised Defense Translator Model			5. FUNDING NUMBERS C-MDA-903-89C-0003 T-Q7-337	
6. AUTHOR(S) Thomas P. Frazier and Jeffrey B. Tate				
7. PERFORMING ORGANIZATION NAME(S) AND ADDRESS(ES) Institute for Defense Analyses 1801 N. Beauregard Street Alexandria, VA 22311-1772			8. PERFORMING ORGANIZATION REPORT NUMBER IDA-D-796	
9. SPONSORING/MONITORING AGENCY NAME(S) AND ADDRESS(ES) OASD(PA&E) Room 2D311, The Pentagon Washington, D.C. 20301			10. SPONSORING/MONITORING AGENCY REPORT NUMBER	
11. SUPPLEMENTARY NOTES				
12A. DISTRIBUTION/AVAILABILITY STATEMENT Approved for public release; distribution unlimited.			12B. DISTRIBUTION CODE	
13. ABSTRACT (Maximum 200 words) The Defense Economic Impact Modeling System (DEIMS) Translator is an accounting and analytic device for determining the percentage of DoD purchases supplied by various industries. The translator is periodically updated to reflect changes in the amount and types of goods and services purchased by the DoD. The procedure for updating the translator has been automated for the Operations and Maintenance (O&M) portion of the translator. The document serves as a user's manual for that automated procedure.				
14. SUBJECT TERMS Defense Economic Impact Modeling System (DEIMS), Department of Defense, Computer Models, Instruction Manuals			15. NUMBER OF PAGES 81	
			16. PRICE CODE	
17. SECURITY CLASSIFICATION OF REPORT Unclassified	18. SECURITY CLASSIFICATION OF THIS PAGE Unclassified	19. SECURITY CLASSIFICATION OF ABSTRACT Unclassified	20. LIMITATION OF ABSTRACT SAR	

NSN 7540-01-280-5500

Standard Form 298 (Rev. 2-89)
Prescribed by ANSI Std. Z39-18
298-102

UNCLASSIFIED

IDA DOCUMENT D-796

A USER'S MANUAL FOR
THE REVISED DEFENSE TRANSLATOR MODEL

Thomas P. Frazier, *Project Leader*
Jeffrey B. Tate

June 1990

Approved for public release; distribution unlimited.



INSTITUTE FOR DEFENSE ANALYSES

Contract MDA 903 89 C 0003

Task T-Q7-337

PREFACE

This Document was prepared by the Institute for Defense Analyses (IDA) for the Office of the Assistant Secretary of Defense (Program Analysis and Evaluation), under contract MDA 903 89 C 0003, Task Order T-Q7-337, issued 8 July 1985, and amendments. Part of the objective of the task was to assess the feasibility of automating the updating procedure for the Operations and Maintenance (O&M) vectors contained in the Defense Economic Impact Modeling System (DEIMS). This Document is the user's manual for the model that resulted from that effort.

Accession For	
NTIS GRA&I	<input checked="" type="checkbox"/>
DTIC TAB	<input type="checkbox"/>
Unannounced	<input type="checkbox"/>
Justification	
By _____	
Distribution/	
Availability Codes	
Dist	Avail and/or Special
A-1	

CONTENTS

Preface.....	iii
I. Introduction	1
II. Analytical Procedures	3
III. How to Use the Model.....	9
A. General Instructions.....	9
B. Start Up.....	9
C. Data Input	10
D. Viewing and Printing the Results	13
Appendix A. Description of the DEIMS Source Code.....	A-1
Appendix B. O&M Vectors for Army (Active).....	B-1
Appendix C. O&M Vectors for Navy (Active)	C-1
Appendix D. O&M Vectors for Air Force (Active).....	D-1
Appendix E. O&M Vectors for Marine Corps (Active).....	E-1
Appendix F. O&M Vectors for Defense Agencies.....	F-1
Appendix G. O&M Vectors for Army (Reserve).....	G-1
Appendix H. O&M Vectors for Navy (Reserve)	H-1
Appendix I. O&M Vectors for Marine Corps (Reserve).....	I-1
Appendix J. O&M Vectors for Air Force (Reserve).....	J-1
Appendix K. O&M Vectors for Army (National Guard).....	K-1
Appendix L. O&M Vectors for Air Force (National Guard)	L-1

FIGURES

1. Basic Approach	4
2. Main Menu.....	10
3. O&M Service Entities.....	10
4. File Selection Screen.....	11
5. Data Entry Screen	11
6. Selecting a File	12

7. File Name Error Message	12
8. Data File Screen	13
9. Displaying the Output.....	14
10. Output Display	14
11. Saving the Results	15
A-1. DEIMS Flow Diagram.....	A-1

TABLES

1. Matrix Representation of the Defense Translator.....	3
2. Operations and Maintenance, Army.....	5
3. Summary of Object Class to DRI Sectors.....	7

I. INTRODUCTION

This Document is the user's manual for the Defense Economic Impact Modeling System (DEIMS) Translator. The translator is both an accounting device and an analytic device. In the former role, it accounts for the distribution of defense spending among the industries that produce the goods or services that DoD buys. As an analytical tool, the translator attempts to describe the commodity composition of defense demand. In the simplest terms, the translator is the percentage of DoD purchases supplied by various industries.

There are translators for each budget account (i.e., Military Personnel; Operations and Maintenance; Procurement; Research, Development, Test and Evaluation; and Military Construction and Family Housing). Applied to outlays from those accounts, the translator yields dollar estimates of DoD purchases from various industries.

The translator was developed in the early 1980s by what was then the Office of the Director, Program Analysis and Evaluation (now the Office of the Assistant Secretary of Defense) with contract assistance from Data Resources Incorporated (DRI). Subsequently, the translator has undergone a series of revisions in order to reflect changes in computational methods and in the amount and types of goods and services purchased by the DoD.

IDA originally documented the Defense Translator in 1984.¹ Subsequent documentation of the translator was prepared so that it may serve as an authoritative and complete view of the translator as it was used to project portions of the FY 1985 through FY 1988 budgets.²

With the goal of reducing the labor required to update the translator, an approach that made use of automated databases was investigated. The Operations and Maintenance (O&M) budget account portion of the translator was selected as the logical candidate for automation. The O&M account was next in the updating cycle, and it was in many ways

¹ Thomas, R. William, et al. *The Defense Translator*. Record Document D-62, Institute for Defense Analyses, June 1984.

² Frazier, Thomas P., et al. *The Revised Defense Translator*. Paper P-2141, Institute for Defense Analyses, August 1988.

the least amenable of all the accounts to automate. Many of the databases sampled from in order to construct the O&M vectors were not scheduled to be automated.

The goal was to develop a computer model that could be used by PA&E analysts to quickly construct a new translator in response to "what if" questions without the laborious effort required in the past. The result is a model that can be used on any PC or PC-compatible computer that will estimate the percentage of DoD O&M purchases applied by various industries, given some set of minimal inputs from the user.

The computer model has been constructed in such a manner that it will make future automation of the other budget accounts simple and compatible with the O&M accounts.

This manual is divided into three sections. This introduction is section one. The second section contains an overview of the analytical procedures embodied in the model. The third section contains a tutorial on how to use the model.

There are twelve appendices to this manual. Appendix A is a description of the computer source code. Appendices B through L present the final FY 1988 O&M translator vectors for all the services plus defense agencies.

II. ANALYTICAL PROCEDURES

A starting point for any discussion of the translator is a description of its mathematical form. The translator for any one year can be viewed as a rectangular array, or matrix, of 10 rows by 432 columns. For purposes of discussion, a simplified translator is shown in Table 1. Each element of the translator displays the percentage of total spending in a budget category supplied by the indicated industrial sector. Thus, the hypothetical entry in the first row, first column (2.1 percent) indicates the percentage of total Military Personnel expenditures supplied by firms in industry 1. Across the rows, the percentages total 100.

Table 1. Matrix Representation of the Defense Translator

Industry	Mil Pers	O&M	Procurement						R&D	MILCON/ FH
			A/C	Mis	Veh	Wpn	Ship	Other		
1	2.1									
2	0.0									
3	0.1									
.	.									
.	.									
.	.									
432	89.5									
Total	100	100	100	100	100	100	100	100	100	

In this work, a vector is a 432-by-1 matrix, where the single row represents a service, the defense agencies, an account, or a system, and the 432 columns represent industrial sectors.

The task of the translator is to fill in the elements of the matrix. Unfortunately, no single source of data allows one to easily compute the value for each element in the matrix. This fact influenced our approach to estimating these elements. Our basic approach is presented in Figure 1.

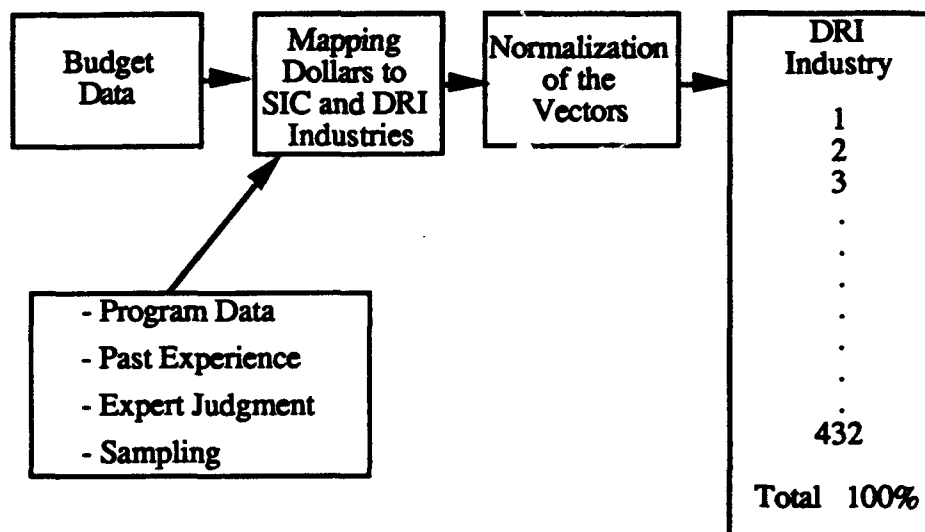


Figure 1. Basic Approach

Our approach begins with the budget data that account for all spending in a given appropriation account. Then we disaggregate these data down into subaccounts. For each of the 10 budget accounts listed in Table 1, there are from a few dozen to a few hundred subaccounts. These subaccounts and their related dollars are then "mapped" to individual DRI industries based on information from program descriptions, past experience, expert judgment, and sampling from data collection systems. The dollars are then totaled and individual industry percentages of the total are calculated. These percentages are renormalized as necessary to take into account information concerning the conversion of purchaser's price to producer's price and other special computational issues.

The process begins by taking budget data in the form of object classification for each of the appropriations. The object classification scheme is reported in the appendix to the President's Budget Submission. This scheme identifies categories of spending only in broad terms; it was designed to provide Congress with an overview of how money is spent, not to identify particular supplier industries. A typical entry from the 1988 President's Budget is shown in Table 2. Here, Army O&M outlays are characterized by budget object class (e.g., compensation, travel of persons, transportation of things, printing, communications, etc.).

**Table 2. Operations and Maintenance, Army
(Dollars in Thousands)**

Identification code 17-1804-0-1-051	1986 actual	
Direct obligations:		
Personnel compensation		
11.1	Full-time permanent	2,410,332
11.3	Other than full-time permanent	175,743
11.5	Other personnel compensation	117,114
11.8	Special personal services payments	<u>848</u>
11.9	Total personnel compensation	2,704,037
12.1	Personnel benefits: Civilian	353,764
13.0	Benefits for former personnel	6,654
21.0	Travel and transportation of persons	324,067
22.0	Transportation of things	410,868
23.1	Rental payments to GSA	138,571
23.2	Rental payments to others	70,590
23.3	Communications, utilities, and miscellaneous charges	832,091
24.0	Printing and reproduction	40,092
25.0	Other services:	
	Payments to foreign national indirect hire personnel	69,014
25.0	Purchases from industrial funds	6,167,395
25.0	Contracts	7,927,949
25.0	Other	18,565
26.0	Supplies and materials	3,556,478
31.0	Equipment	<u>555,822</u>
99.0	Subtotal, direct obligations	23,175,957
99.0	Reimbursable obligations	<u>2,962,153</u>
99.9	Total obligations	<u>26,138,110</u>

Where possible, we try to break these categories into subaccounts. These subaccounts and their associated dollars are then mapped to one or more of the Standard Industrial Classification (SIC) and DRI industry sectors. The data source used to construct the mappings varies from one appropriation category to the next. The selection of the "best" data takes into account the scope of the data (i.e., does it account for all or a good deal of the appropriation funds) and the depth of data (i.e., does it provide a detailed description of the spending so that it is possible to identify the distribution of funds among the supplying industries). For example, the best source of data relating O&M expenditures to their supplying industries is the Prime Contract Awards database. This database

contains all DoD contracts awarded by each military service and by defense agencies that are valued at more than \$25,000.

The basic approach outlined above was used to create the elements that make up the O&M vector. Table 3 presents a summary of the procedures used to map budget data (in object classification form) to DRI industries.

Table 3. Summary of Object Class to DRI Sectors

Object	Mapped to DRI Sector(s)	Mapping Method
11.0 Personnel Compensation	432 - Federal Employee	Direct
12.0 Personnel Benefits	432 - Federal Employee	Direct
13.0 Benefits Former Employ	432 - Federal Employee	Direct
21.0 Travel/Transportation Personnel	381 - Passenger Transportation, N.E.C.	Fraction assigned. Each sector is based upon the size of their relative Domestic Demand as computed by BEA
	384 - Air Carriers and Rel. Services	
	399 - Hotels and Lodging Places	
	415 - Eating and Drinking Places	
	416 - Auto Rental and Leasing	
22.0 Transportation of Things	380 - Railroads and Rail Rel. Services	Fraction assigned. Each sector is based upon the size of their relative Domestic Demand as computed by BEA
	382 - Motor Freight	
23.0 Rent/Comm/Utilities	387 - Communications, Ex. Radio & TV	Fraction assigned. Each sector is based upon the size of their relative Domestic Demand as computed by BEA
	389 - Electric Utilities	
	390 - Gas Utilities	
	391 - Water and Sewer Services	
	398 - Real Estate	
	427 - U.S. Postal Services	

Table 3. Summary of Object Class to DRI Sectors (Continued)

Object	Mapped to DRI Sector(s)	Mapping Method
24.0 Printing and Reproduction	161 - Commercial Printing 428 - Other Fed. Gov't Enterprises	Fraction assigned. Each sector is based upon the size of their relative Domestic Demand as computed by BEA
25.0 Payments Foreign Nationals	430 - Noncomparable Imports	Direct
25.0 Contracts	Various Sectors	Fraction assigned. Each sector is based upon the size of the O&M contracts awarded to that sector in FY1988. These data are taken from the Prime Contract Awards.
26.0 Supplies and Materials	Various Sectors	Fraction assigned. Each sector is based upon the relative size of DoD purchases of these commodities. These data are taken from various reporting management information systems for each military service.
31.0 Equipment	Various Sectors	Fraction assigned. Each sector is based upon the relative size of DoD purchases of these commodities. These data are taken from various reporting management information systems for each military service.

III. HOW TO USE THE MODEL

This section demonstrates how the model can be used to generate the translator vectors. Instructions for starting up the model, inputting the data, and viewing and printing the vectors are presented, using the Army O&M budget data as an example.

A. GENERAL INSTRUCTIONS

The program is menu-driven. The following general instructions apply:

- If the menu consists of a question, respond to it by typing Y for "yes" or N for "no." The program provides a new menu based on your answer.
- When the menu consists of several items, use the arrow keys to move the cursor through the menu choices. When the cursor is on a particular item, that item is highlighted. You can then select that item by pressing the <enter> key.
- If the menu requires only one selection, making a selection causes the next menu to appear. If more than one selection is possible, the current menu remains so that other selections can be made.
- Whenever you want to leave a given menu, use the <escape> key (marked ESC on some systems). This signals the program to close the active menu and either return to a higher level menu or to move on to the next menu.
- At the bottom of most screens, brief descriptions of the response options available are displayed.

B. START UP

Make the disk where DEIMS resides the default drive. Then make the DEIMS directory the default by typing CD\DEIMS and pressing the <enter> key. Type DEIMS at the DOS prompt, and press the <enter> key.

After you call DEIMS the main menu will appear. This screen is shown in Figure 2. The main menu contains four options: R&D, Procurement, O&M, and MILCON/FH. Only the O&M option is operational at this point. The other three options are place-holders for future automation of the translator.

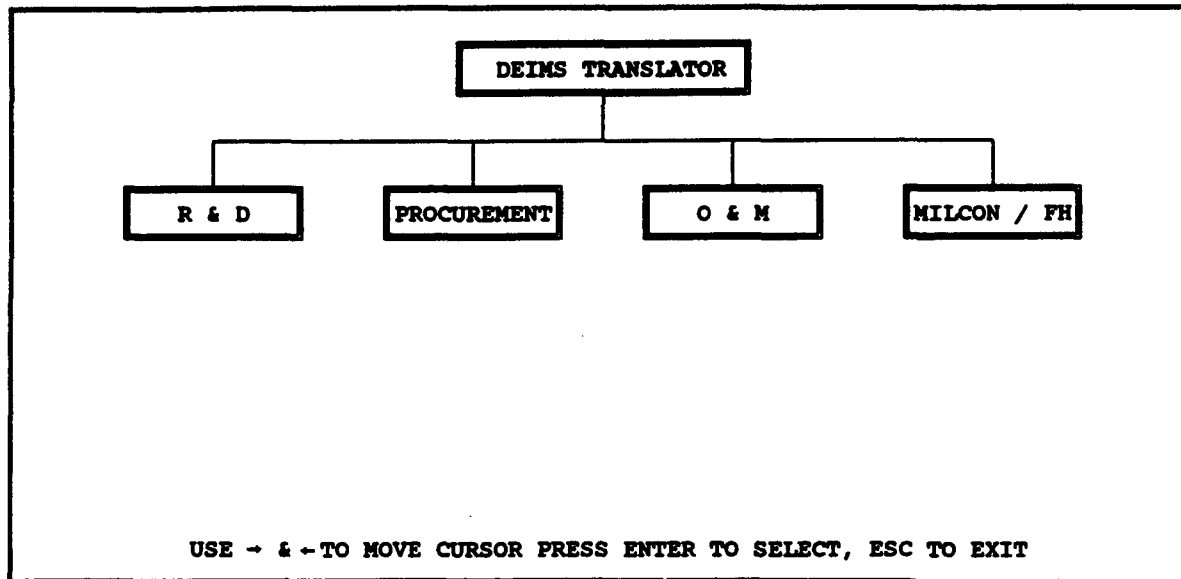


Figure 2. Main Menu

C. DATA INPUT

Once you select the O&M option from the main menu, a window appears on the screen that lists all the service entities that receive O&M monies. This screen is shown in Figure 3. Once you select a service entity, a new screen appears (Figure 4) that identifies the service entity selected and asks if you want to retrieve data from a previously created dBASE file that contains the budget data in object classification form for the selected service.

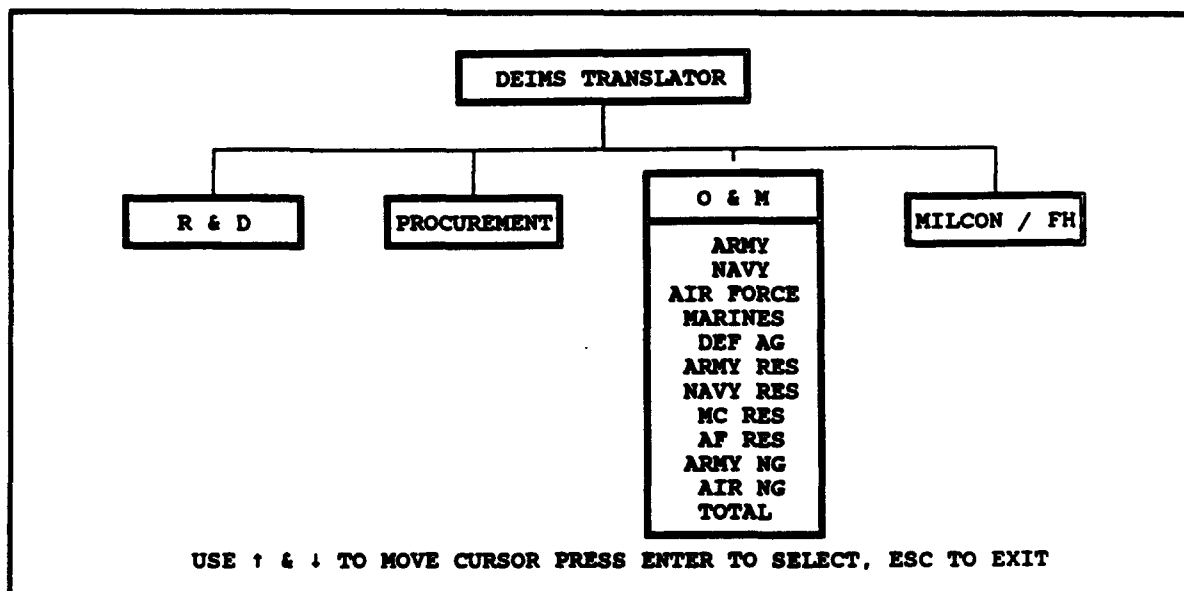


Figure 3. O&M Service Entities

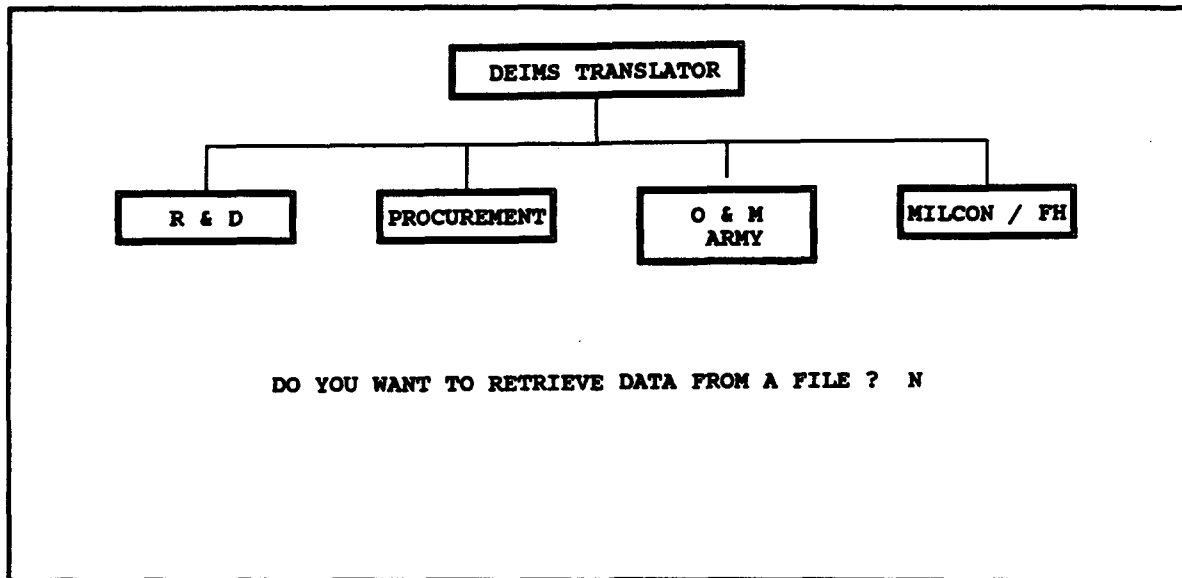


Figure 4. File Selection Screen

If you type N, you will see an input screen as shown in Figure 5. At this point, type the appropriate values for each object classification. When completed, move to the last line (99.0 Subtotal, DIR OB) and press the <enter> or the <down arrow> key.

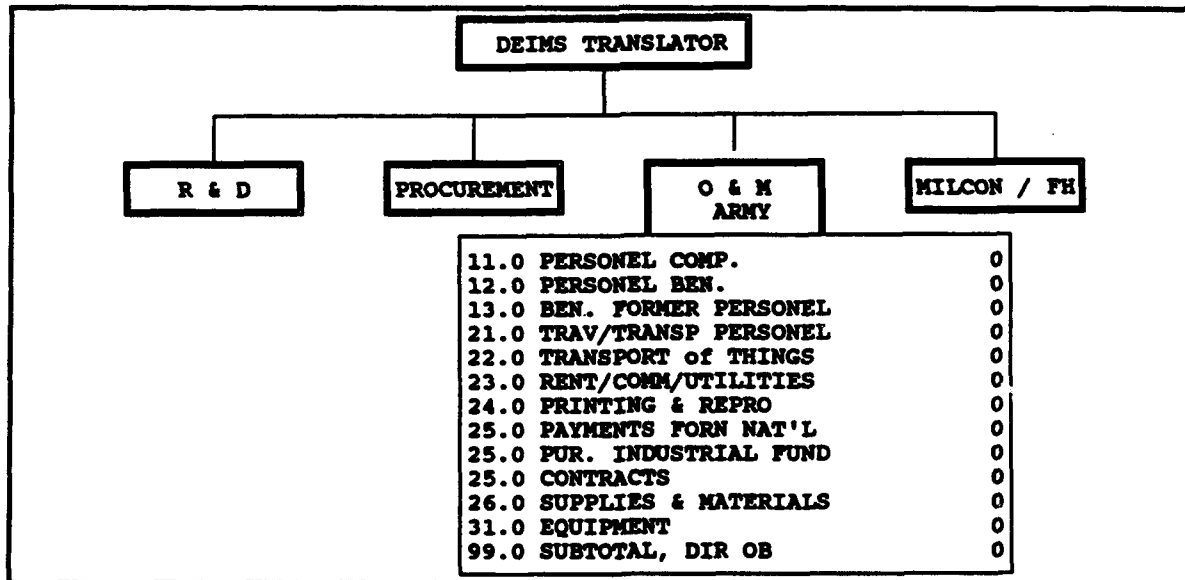


Figure 5. Data Entry Screen

If you answer Y, a new screen as shown in Figure 6 will appear. The screen has an eight-character field in which to enter the name of the file. If you enter a file name that cannot be located, an error message as shown in Figure 7 will appear.

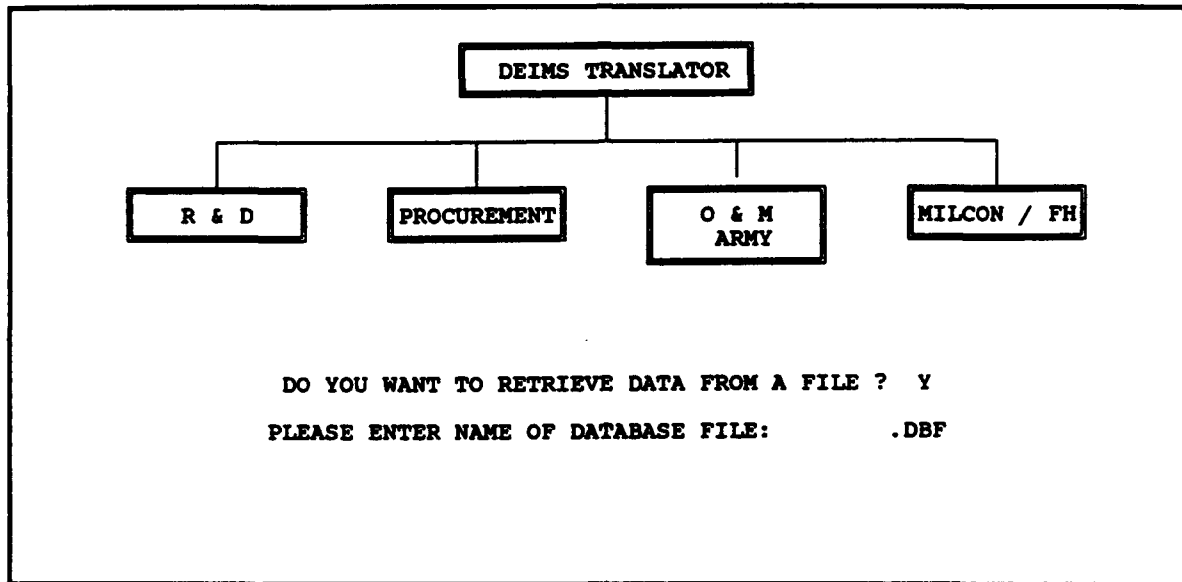


Figure 6. Selecting a File

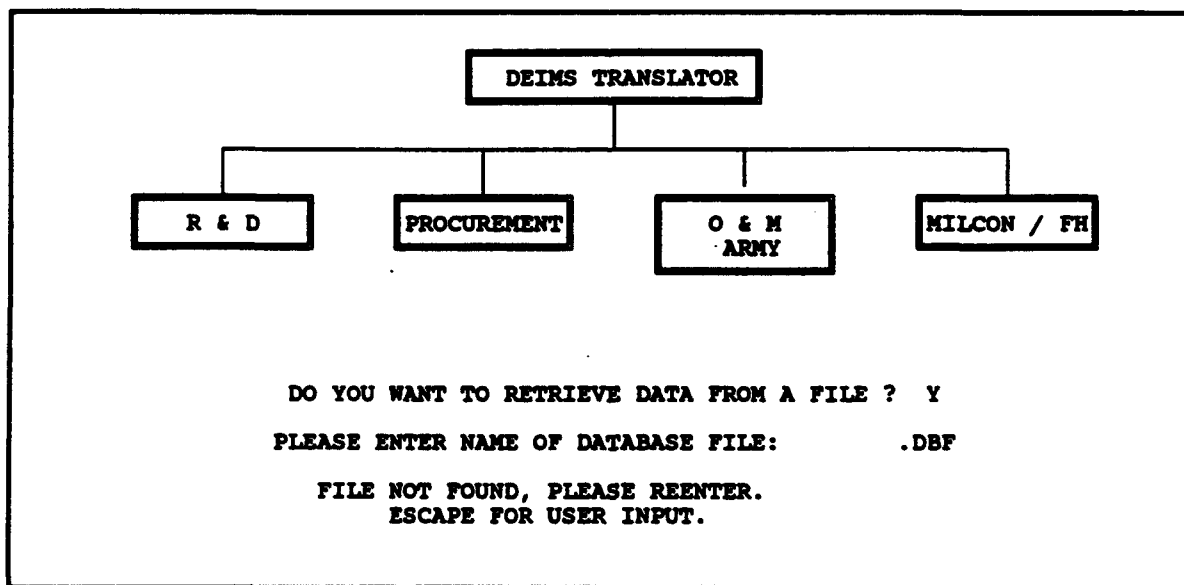


Figure 7. File Name Error Message

Once the data file has been successfully loaded, a screen with data displayed will appear. Figure 8 is an example.

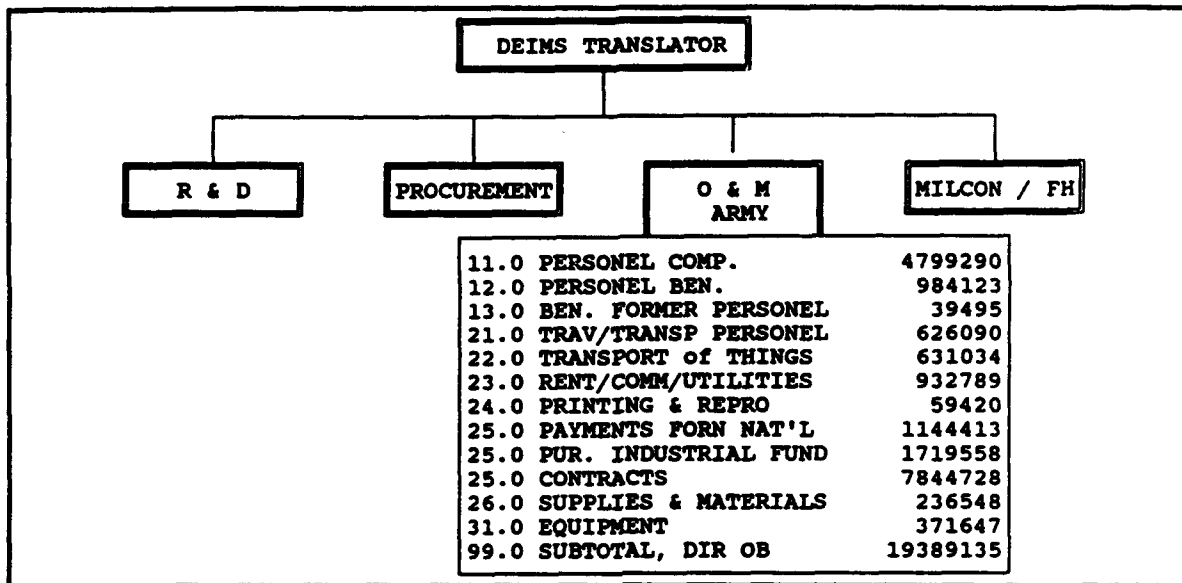


Figure 8. Data File Screen

D. VIEWING AND PRINTING THE RESULTS

Once all the inputs and selections are completed, the program will compute the vectors for the selected service entity. You will be given the opportunity to direct the results to one or more of the following output media:

- screen
- printer
- ASCII file.

A screen, illustrated in Figure 9, will appear with the query "Do You Want The Output Displayed?" If you answer Y, a series of screens with the DRI codes, industry, descriptions, and computer vector values will appear. For example, Figure 10 is the first of twelve screens of results for the Army O&M budget data. (A complete listing of the results for all service entities is presented in Appendices B through L.

If you answer N (the default in this case), a new screen will appear asking if you want the output directed to your printer. If you answer Y, the results will be printed to your designated printer. If you answer N, then a new screen asking if you want to save the results to a file will appear.

O & M ARMY		
DRI CODE	INDUSTRY	VECTOR
50	COMPLETE GUIDED MISSILES	4.95584
51	AMMO, EXCEPT SMALL ARMS, N.E.C	5.01436
52	TANKS & TANK COMPONENTS	3.11818
53	SMALL ARMS	0.51582
54	SMALL ARMS AMMUNITION	0.26406
55	OTHER ORDNANCE & ACCESSORIES	0.39811
63	ICE CREAM & FROZEN DESSERTS	0.03612
64	FLUID MILK	0.05649
69	PICKLES, SAUCES & SALAD DRESS.	0.00014
70	FRESH OR FROZEN PACKAGED FISH	0.00452
71	FROZEN FRUITS & VEGETABLES	0.00005
74	BLENDED & PREPARED FLOUR	0.00696
89	BOTTLED & CANNED SOFT DRINKS	0.00167
99	FOOD PREPARATIONS, N.E.C.	0.09995
104	BROADWOVEN FABRIC PLANTS	0.00558
108	FLOOR COVERINGS	0.00302
111	TEXTILE GOODS N.E.C.	0.01937

USE ↑, ↓, PgUp, PgDn, Home, & End TO SCAN THE TABLE
PRESS Esc TO EXIT

Figure 9. Displaying the Output

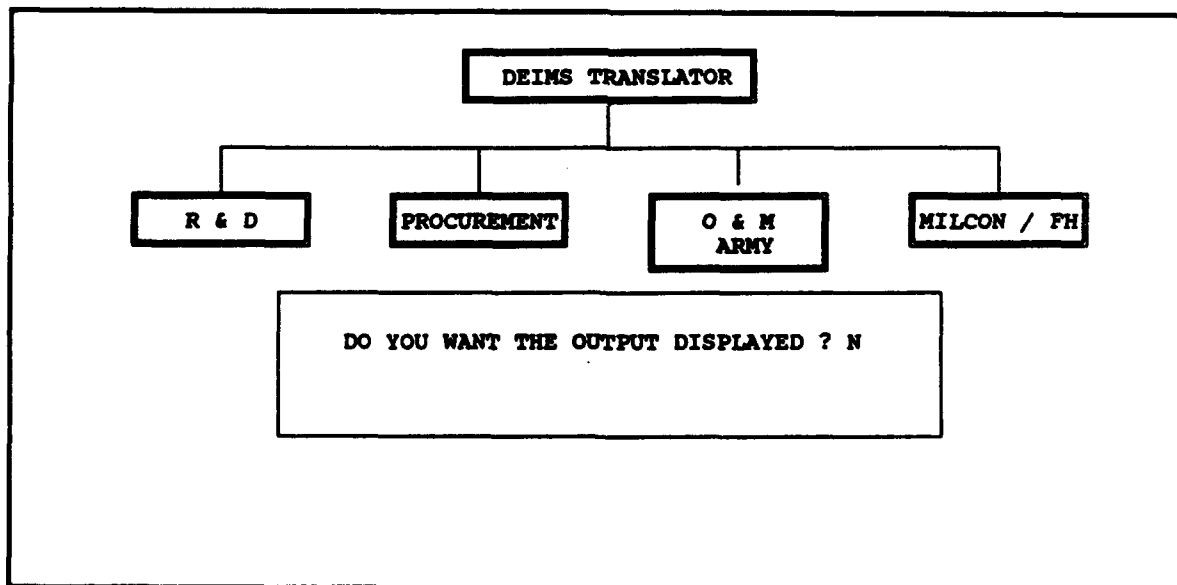


Figure 10. Output Display

If you answer Y, the program will prompt you to enter the name of the output file you want created. Figure 11 shows this screen. An ASCII file will be written and placed in DEIMS directory. Once the file is written (or if you responded N to the output file

question), the program will return you to the main menu. At this point you may select a new O&M service entity or you may exit the program by pressing the <escape> key.

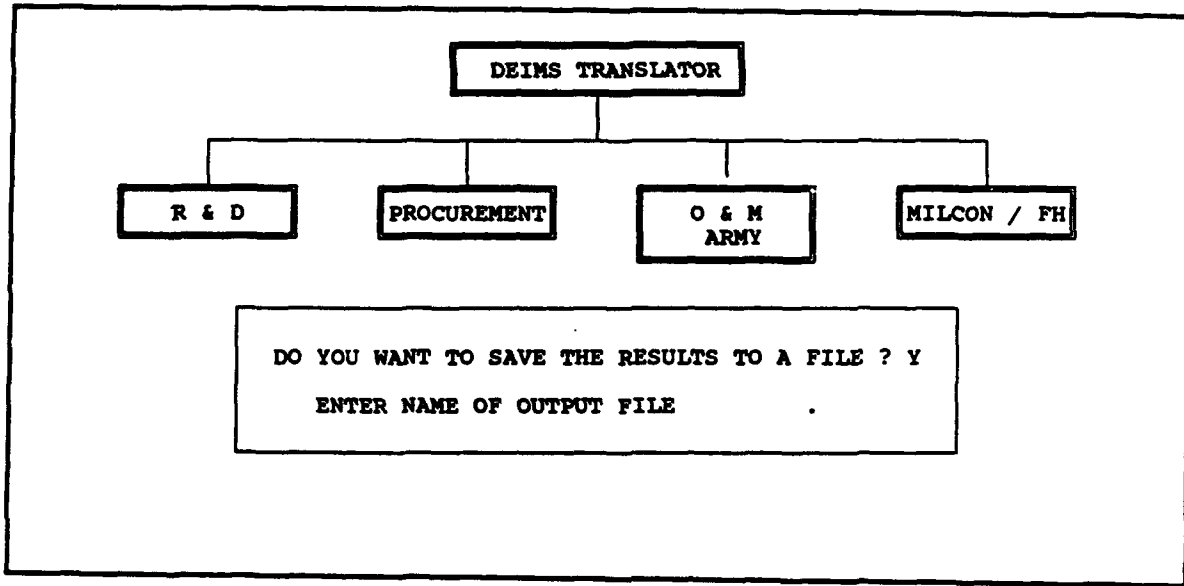


Figure 11. Saving the Results

APPENDIX A.
DESCRIPTION OF THE DEIMS SOURCE CODE

APPENDIX A. DESCRIPTION OF THE DEIMS SOURCE CODE

This appendix briefly summarizes the structure of DEIMS and describes the function of each subroutine. Figure A-1 is a flow diagram of the program subroutines.

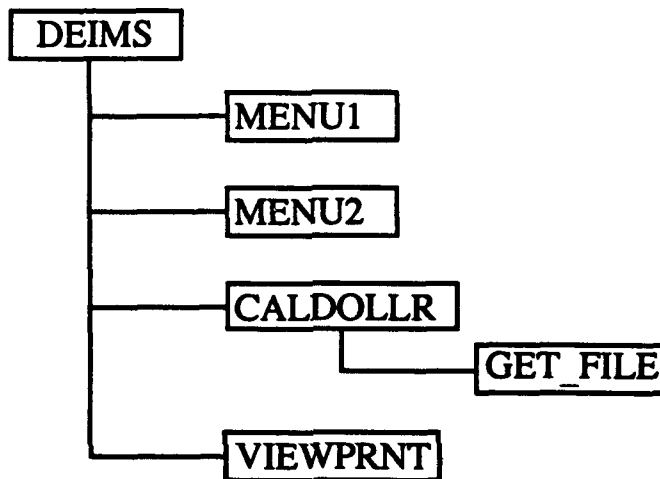


Figure A-1. DEIMS Flow Diagram

DEIMS is implemented in Clipper, a compiled version of dBASE III+. All subroutines shown in the figure have the DOS extension .PRG, which is the default for dBASE/Clipper source code files. They are compiled and linked to the machine code file DEIMS.EXE.

DEIMS is the program that calls all the subroutines in the DEIMS model. It also sets up the assigns values to variables used in the MENU2 subroutine.

MENU1 displays the first set of choices, R&D, Procurement, O&M, and MILCON/FH.

MENU2 displays the choices set up in DEIMS, which are dependent on the selection made in MENU1.

CALDOLLR calls GET_FILE, allows the user to edit or enter cost data into thirteen categories, and calculates the percentages of where the money is spent.

VIEWPRNT displays the non-zero percentages on the screen and allows the user to send this information to a printer.

GET_FILE allows the user to retrieve from a specific data file the cost data for the thirteen categories.

APPENDIX B.
O&M VECTORS FOR ARMY (ACTIVE)

DRI CODE	INDUSTRY	VECTOR
50	COMPLETE GUIDED MISSILES	4.95584
51	AMMO, EXCEPT SMALL ARMS, N.E.C	5.01436
52	TANKS & TANK COMPONENTS	3.11818
53	SMALL ARMS	0.51582
54	SMALL ARMS AMMUNITION	0.26406
55	OTHER ORDNANCE & ACCESSORIES	0.39811
63	ICE CREAM & FROZEN DESSERTS	0.03612
64	FLUID MILK	0.05649
69	PICKLES, SAUCES & SALAD DRESS.	0.00014
70	FRESH OR FROZEN PACKAGED FISH	0.00452
71	FROZEN FRUITS & VEGETABLES	0.00005
74	BLENDED & PREPARED FLOUR	0.00696
89	BOTTLED & CANNED SOFT DRINKS	0.00167
99	FOOD PREPARATIONS, N.E.C.	0.09995
104	BROADWOVEN FABRIC PLANTS	0.00558
108	FLOOR COVERINGS	0.00302
111	TEXTILE GOODS N.E.C.	0.01937
112	HOSIERY & KNIT GOODS	0.15398
114	APPAREL FROM PURCHASED MATERIAL	0.00999
115	HOUSE FURNISHINGS	0.00111
116	FABRIC TEXTILE PRODUCTS, N.E.C	0.03945
118	SAWMILLS & PLANING MILLS, GEN	0.00418
123	VENEER & PLYWOOD	0.00033
130	WOODEN CONTAINERS	0.03994
131	WOOD HOUSEHOLD FURNITURE	0.01517
136	MATTRESSES & BEDSPRINGS	0.00117
137	WOOD OFFICE FURNITURE	0.05933
143	FURNITURE & FIXTURES, N.E.C.	0.04963
145	PAPER MILLS, EX. BLDING PAPER	0.00259
149	BLDING PAPER & BOARD MILLS	0.00123
151	BAGS, EXC. TEXTILE BAGS	0.00033
155	PAPERBOARD CONTAINERS & BOXES	0.00268
156	NEWSPAPER	0.00203
158	BOOK PUBLISHING	0.00782
160	MISC. PUBLISHING	0.00721
161	COMMERCIAL PRINTING	0.25068
162	MANIFOLD BUSINESS FORMS	0.00907
168	INORGANIC & ORGANIC CHEMICALS	0.01827
171	AG CHEMICALS, N.E.C.	0.00030
173	ADHESIVES & SEALANTS	0.00018
174	EXPLOSIVES	0.06953
177	CHEM. PREPARATIONS, N.E.C.	0.03356
182	DRUGS	0.01233
183	SOAP & OTHER DETERGENTS	0.00015
184	POLISHES & SANITATION GOODS	0.00211
187	PAINTS & ALLIED PRODUCTS	0.00066

DRI CODE	INDUSTRY	VECTOR
188	PETROL. REFINING & REL. PROD.	1.28279
189	LUB OILS & GREASES	0.00024
193	TIRES & INNER TUBES	0.07575
196	FABRICATED RUBBER PROD., N.E.C	0.00066
197	MISC. PLASTIC PRODUCTS	0.00048
198	HOSE & BELTING	0.00344
200	FOOTWEAR, CUT STOCK	0.00032
204	LEATHER GOODS, N.E.C.	0.00243
205	GLASS & PROD., EXC. CONTAINERS	0.00086
208	STRUCTURAL CLAY PRODUCTS	0.00637
209	KITCHEN POTTERY	0.00036
211	CONCRETE BLOCK & BRICK	0.00503
212	CONCRETE PRODUCTS, N.E.C.	0.00012
217	ABRASIVE PRODUCTS	0.00035
218	ASBESTOS PROD. & SEALING DEV.	0.00765
222	NONMETALLIC MIN. PROD., N.E.C.	0.00129
223	BLAST FURNACES & STEEL MILLS	0.00938
224	ELECTROMETALLURGICAL PRODUCTS	0.00014
225	STEEL WIRE & RELATED PRODUCTS	0.00147
231	PRIMARY METAL PRODUCTS, N.E.C.	0.00013
240	NONFER. ROLL. & DRAW., N.E.C.	0.00340
241	NONF.WIRE DRAW. & INSULATING	0.00012
243	BRASS, BRONZE & COPPER CASTING	0.00075
246	METAL CANS	0.00310
247	METAL BARRELS, DRUMS & PAILS	0.00082
248	METAL SANITARY WARE	0.00181
249	PLUMBING FITTINGS & TRIM	0.00133
250	HEATING EQUIP, EXC. ELECTRICAL	0.00492
251	FABRICATED STRUCTURAL METAL	0.11817
253	FABRIC. PLATE WORK (BOILERSHOP	0.02846
255	ARCHITECTURAL METAL WORK	0.00106
256	MISC. METAL WORK	0.11697
257	SCREW MACHINE PRODUCTS	0.01479
259	OTHER METAL STAMPINGS	0.00031
260	CUTLERY	0.02671
261	HAND & EDGE TOOLS, N.E.C.	0.01006
263	HARDWARE, N.E.C.	0.00805
266	MISC. FABRICATED WIRE PRODUCTS	0.00405
267	STEEL SPRINGS	0.00118
268	PIPE VALVES & PIPE FITTINGS	0.02317
270	FABR. METAL PRODUCTS, N.E.C.	0.06664
271	STEAM ENGINES & TURBINES	0.58993
272	INTERNAL COMB. ENGINES, N.E.C.	0.13418
273	FARM MACHINERY	0.00133
274	LAWN & GARDEN EQUIPMENT	0.00127
275	CONSTRUCTION MACHINERY	0.11022

DRI CODE	INDUSTRY	VECTOR
276	MINING MACH., EXC. OIL	0.02008
277	OIL FIELD MACHINERY	0.01026
279	CONVEYORS & CONVEYING EQUIP.	0.00043
280	HOISTS, CRANES & MONORAILS	0.04189
281	INDUSTRIAL TRUCKS & TRACTORS	0.23560
282	MACHINE TOOLS, METAL CUTTING	0.03917
283	MACHINE TOOLS, METAL FORMING	0.00946
284	SPECIAL DIES, TOOLS, ACCESS.	0.00293
285	POWER DRIVEN HAND TOOLS	0.00106
286	ROLLING MILL MACHINERY	0.00019
287	METALWORKING MACHINERY, N.E.C.	0.01464
288	FOOD PRODUCTS MACHINERY	0.00017
289	TEXTILE MACHINERY	0.03036
290	WOODWORKING MACHINERY	0.00049
291	PAPER INDUSTRIES MACHINERY	0.00085
292	PRINTING TRADES MACHINERY	0.01740
293	SP. INDUSTRY MACHINERY, N.E.C.	0.07108
294	PUMPS & COMPRESSORS	0.02199
295	BALL & ROLLER BEARINGS	0.01753
296	BLOWERS & FANS	0.00900
298	POWER TRANSMISSION EQUIPMENT	0.04625
299	INDUSTRIAL FURNACES & OVENS	0.00391
300	GEN. INDUSTRIAL MACH., N.E.C.	0.11318
303	ELECTRONIC COMPUTING EQUIP.	1.27229
304	CALCULATING & ACCOUNTING MACH.	0.01244
306	OFFICE MACHINES, N.E.C.	0.01291
307	AUTO. MERCHANDISING MACHINERY	0.00030
308	COMMERCIAL LAUNDRY EQUIPMENT	0.02582
309	REFRIG. & HEATING EQUIPMENT	0.04820
311	SERVICE INDUSTRY MACH., N.E.C.	0.03302
312	ELECTRIC MEASURING INSTRUMENTS	0.11765
313	TRANSFORMERS	0.00460
314	SWITCHGEAR & SWITCHBOARDS	0.01602
315	MOTORS & GENERATORS	0.25943
316	INDUSTRIAL CONTROLS	0.01762
318	CARBON & GRAPHITE PRODUCTS	0.00024
319	ELECTRIC INDUSTR. APPAR, N.E.C	0.07422
320	HOUSEHOLD COOKING EQUIP.	0.00070
326	HOUSEHOLD APPL., N.E.C.	0.01600
327	ELECTRIC LAMPS	0.00006
328	LIGHTING FIXTURES	0.00055
329	WIRING DEVICES	0.02125
330	RADIO & TV RECEIVING SETS	0.02248
331	PHONOGRAPH RECORDS & TAPE	0.00060
332	TELEPHONE & TELEGRAPH EQUIP.	0.16505
333	RADIO & TV COMM. EQUIPMENT	5.22645

DRI CODE	INDUSTRY	VECTOR
334	ELECTRON TUBES	0.02249
335	SEMICONDUCTORS	0.00827
336	ELECTRONIC CAPACITORS	0.00048
337	RESISTORS, FOR ELEC. APPLIC.	0.00063
338	ELEC. COILS, TRANSFORMERS, ETC	0.00128
340	ELECTRONIC COMPONENTS, N.E.C.	0.13643
341	STORAGE BATTERIES	0.03045
342	PRIMARY BATTERIES, DRY & WET	0.09329
343	X-RAY APPRATUS & TUBES	0.00415
345	ELECTRICAL EQUIP., N.E.C.	0.01029
347	TRUCK TRAILERS	0.22755
348	MOTOR VEHICLES-AUTOS	0.52746
349	MOTOR VEHICLES-OTHER	1.73323
350	MOTOR VEHICLE PARTS & ACCESS.	1.23032
351	AIRCRAFT	2.56899
352	AIRCRAFT ENG. & ENG. PARTS	0.68116
353	AIRCRAFT PARTS & EQUIP., N.E.C	0.94641
354	SHIPBUILDING & REPAIRING	0.18917
355	BOATBUILDING & REPAIRING	0.01018
356	RAILROAD EQUIPMENT	0.00717
357	MOTORCYCLES, BICYCLES & PARTS	0.00061
361	ENGINEERING & SCIENTIFIC INST.	0.22961
362	MEASURING & CONTROL INSTRUMENT	0.15522
363	SURGICAL & MEDICAL INSTRUMENTS	0.03155
364	SURGICAL APPLIANCES & SUPPLIES	0.00860
365	DENTAL EQUIP. & SUPPLIES	0.00075
367	OPTICAL INSTR. & LENSES	0.34072
369	PHOTOGRAPHIC EQ. & SUPPLIES	0.01672
370	JEWELRY, PRECIOUS METAL	0.00004
374	MUSICL INSTRUMENTS & PARTS	0.00068
375	TOYS AND SPORTING GOODS	0.00405
376	OFFICE & ARTISTS' MATERIALS	0.00157
379	MISC. MFGING, DURABLE GOODS.	0.49565
380	RAILROADS & RAIL-RELATED SERV.	0.52829
381	PASSENGER TRANSPORTATION, N.E.C	0.11382
382	MOTOR FREIGHT	2.21822
383	WATER TRANS. & REL. SERVICES	0.00068
384	AIR CARRIERS & REL. SERVICES	1.44935
386	TRANSPORTION SERVICES, N.E.C.	0.15918
387	COMMUNICATIONS, EX. RADIO & TV	1.42060
389	ELECTRIC UTILITIES	2.09392
390	GAS UTILITIES	0.35195
391	WATER & SEWER SERVICES	0.22070
398	REAL ESTATE	0.52012
399	HOTELS & LODGING PLACES	0.69788
403	COMPUTER & DATA PROCESSING	0.60557

DRI CODE	INDUSTRY	VECTOR
405	EQUIP. RENTAL & LEASING	0.19348
406	MISC. BUSINESS SERVICES	4.66978
411	OTHER	0.01609
412	LEGAL SERVICES	0.00016
413	ENG., ARCHIT., SURVEYING	1.40296
415	EATING & DRINKING PLACES	0.39033
416	AUTO RENTAL & LEASING (W/ODR.)	0.05125
419	AMUSEMENT & RECREATION SERVICE	0.00100
420	DOCTORS & DENTISTS	0.05434
422	NURSING&PERSONAL CARE	0.03334
423	OTHER MEDICAL & HEALTH SERVICE	0.23169
424	EDUCATIONAL SERVICES	0.49309
426	SOCIAL SERVICES, N.E.C.	0.00395
427	U.S. POSTAL SERVICE	0.30548
428	OTHER FED. GOV'T ENTERPRISES	0.05092
430	NONCOMPARABLE IMPORTS	4.86137
431	SCRAP	0.05904
432	FEDERAL EMPLOYEE	41.06309

APPENDIX C.
O&M VECTORS FOR NAVY (ACTIVE)

DRI CODE	INDUSTRY	VECTOR
50	COMPLETE GUIDED MISSILES	6.99785
51	AMMO, EXCEPT SMALL ARMS, N.E.C	0.68670
52	TANKS & TANK COMPONENTS	0.00360
53	SMALL ARMS	0.85313
54	SMALL ARMS AMMUNITION	0.05379
55	OTHER ORDNANCE & ACCESSORIES	1.11017
63	ICE CREAM & FROZEN DESSERTS	0.00741
64	FLUID MILK	0.00013
69	PICKLES, SAUCES & SALAD DRESS.	0.00165
70	FRESH OR FROZEN PACKAGED FISH	0.00300
71	FROZEN FRUITS & VEGETABLES	0.00221
74	BLENDED & PREPARED FLOUR	0.00565
81	SUGAR	0.00042
89	BOTTLED & CANNED SOFT DRINKS	0.00329
94	ANIMAL & MARINE FATS & OILS	0.00014
95	ROASTED COFFEE	0.00107
99	FOOD PREPARATIONS, N.E.C.	0.02751
104	BROADWOVEN FABRIC PLANTS	0.00129
108	FLOOR COVERINGS	0.00280
111	TEXTILE GOODS N.E.C.	0.00370
114	APPAREL FROM PURCHASED MATERIAL	0.03418
115	HOUSE FURNISHINGS	0.00107
116	FABRIC TEXTILE PRODUCTS, N.E.C	0.00606
118	SAWMILLS & PLANING MILLS, GEN	0.00052
121	MILLWORK	0.00009
123	VENEER & PLYWOOD	0.00033
130	WOODEN CONTAINERS	0.08058
131	WOOD HOUSEHOLD FURNITURE	0.01290
136	MATTRESSES & BEDSPRINGS	0.00053
137	WOOD OFFICE FURNITURE	0.02936
143	FURNITURE & FIXTURES, N.E.C.	0.00914
147	ENVELOPES	0.01784
149	BLDING PAPER & BOARD MILLS	0.00122
151	BAGS, EXC. TEXTILE BAGS	0.00152
154	STATIONARY & MISC. PAPER	0.00946
155	PAPERBOARD CONTAINERS & BOXES	0.00422
156	NEWSPAPER	0.00742
157	PERIODICALS	0.00123
158	BOOK PUBLISHING	0.00551
160	MISC. PUBLISHING	0.14452
161	COMMERCIAL PRINTING	0.07294
162	MANIFOLD BUSINESS FORMS	0.00583
168	INORGANIC & ORGANIC CHEMICALS	2.45897
173	ADHESIVES & SEALANTS	0.00167
174	EXPLOSIVES	0.00209
177	CHEM. PREPARATIONS, N.E.C.	0.00581

DRI CODE	INDUSTRY	VECTOR
178	PLASTIC MATERIALS & RESINS	0.00008
182	DRUGS	0.00362
183	SOAP & OTHER DETERGENTS	0.00162
186	TOILET PREPARATIONS	0.00218
187	PAINTS & ALLIED PRODUCTS	0.00399
188	PETROL. REFINING & REL. PROD.	3.89889
189	LUB OILS & GREASES	0.00183
190	PROD OF PETR & COAL NEC	0.00181
193	TIRES & INNER TUBES	0.00660
196	FABRICATED RUBBER PROD., N.E.C	0.01895
197	MISC. PLASTIC PRODUCTS	0.01092
198	HOSE & BELTING	0.00307
200	FOOTWEAR, CUT STOCK	0.00016
203	LUGGAGE	0.00004
205	GLASS & PROD., EXC. CONTAINERS	0.00017
206	GLASS CONTAINERS	0.00007
208	STRUCTURAL CLAY PRODUCTS	0.00050
209	KITCHEN POTTERY	0.00017
211	CONCRETE BLOCK & BRICK	0.00023
212	CONCRETE PRODUCTS, N.E.C.	0.00010
217	ABRASIVE PRODUCTS	0.00258
218	ASBESTOS PROD. & SEALING DEV.	0.00754
222	NONMETALLIC MIN. PROD., N.E.C.	0.00225
223	BLAST FURNACES & STEEL MILLS	0.01176
224	ELECTROMETALLURGICAL PRODUCTS	0.00008
225	STEEL WIRE & RELATED PRODUCTS	0.00369
227	STEEL PIPES & TUBES	0.00058
231	PRIMARY METAL PRODUCTS, N.E.C.	0.00175
236	PRIM. NONFERROUS METALS, N.E.C	0.00107
240	NONFER. ROLL. & DRAW., N.E.C.	0.00601
241	NONF.WIRE DRAW. & INSULATING	0.00006
243	BRASS, BRONZE & COPPER CASTING	0.24475
246	METAL CANS	0.00018
247	METAL BARRELS, DRUMS & PAILS	0.00011
248	METAL SANITARY WARE	0.00228
249	PLUMBING FITTINGS & TRIM	0.00076
250	HEATING EQUIP, EXC. ELECTRICAL	0.00079
251	FABRICATED STRUCTURAL METAL	0.00449
253	FABRIC. PLATE WORK (BOILERSHOP	0.97685
254	SHEET METAL WORK	0.00079
255	ARCHITECTURAL METAL WORK	0.00253
256	MISC. METAL WORK	0.04451
257	SCREW MACHINE PRODUCTS	0.01013
259	OTHER METAL STAMPINGS	0.00036
260	CUTLERY	0.00010
261	HAND & EDGE TOOLS, N.E.C.	0.00848

DRI CODE	INDUSTRY	VECTOR
263	HARDWARE, N.E.C.	0.33183
266	MISC. FABRICATED WIRE PRODUCTS	0.00467
267	STEEL SPRINGS	0.00005
268	PIPE VALVES & PIPE FITTINGS	0.07800
270	FABR. METAL PRODUCTS, N.E.C.	0.03196
271	STEAM ENGINES & TURBINES	0.12597
272	INTERNAL COMB. ENGINES, N.E.C.	0.20290
273	FARM MACHINERY	0.00033
274	LAWN & GARDEN EQUIPMENT	0.00041
275	CONSTRUCTION MACHINERY	0.01491
276	MINING MACH., EXC. OIL	0.00433
278	ELEVATORS & MOVING STAIRWAYS	0.00022
279	CONVEYORS & CONVEYING EQUIP.	0.00151
280	HOISTS, CRANES & MONORAILS	0.04289
281	INDUSTRIAL TRUCKS & TRACTORS	0.15795
282	MACHINE TOOLS, METAL CUTTING	0.04830
283	MACHINE TOOLS, METAL FORMING	0.01110
284	SPECIAL DIES, TOOLS, ACCESS.	0.00361
285	POWER DRIVEN HAND TOOLS	0.00166
287	METALWORKING MACHINERY, N.E.C.	0.01002
288	FOOD PRODUCTS MACHINERY	0.00003
289	TEXTILE MACHINERY	0.00036
290	WOODWORKING MACHINERY	0.00111
291	PAPER INDUSTRIES MACHINERY	0.00021
292	PRINTING TRADES MACHINERY	0.01725
293	SP. INDUSTRY MACHINERY, N.E.C.	0.02823
294	PUMPS & COMPRESSORS	0.04668
295	BALL & ROLLER BEARINGS	0.02041
296	BLOWERS & FANS	0.02661
298	POWER TRANSMISSION EQUIPMENT	0.03142
299	INDUSTRIAL FURNACES & OVENS	0.00419
300	GEN. INDUSTRIAL MACH., N.E.C.	0.04371
303	ELECTRONIC COMPUTING EQUIP.	0.87600
304	CALCULATING & ACCOUNTING MACH.	0.00183
306	OFFICE MACHINES, N.E.C.	0.01795
308	COMMERCIAL LAUNDRY EQUIPMENT	0.00314
309	REFRIG. & HEATING EQUIPMENT	0.02390
311	SERVICE INDUSTRY MACH., N.E.C.	0.01634
312	ELECTRIC MEASURING INSTRUMENTS	0.19085
313	TRANSFORMERS	0.00135
314	SWITCHGEAR & SWITCHBOARDS	0.01596
315	MOTORS & GENERATORS	0.12461
316	INDUSTRIAL CONTROLS	0.01705
317	WELDING APPARATUS	0.00254
318	CARBON & GRAPHITE PRODUCTS	0.00014
319	ELECTRIC INDUSTR. APPAR, N.E.C	0.03802

DRI CODE	INDUSTRY	VECTOR
320	HOUSEHOLD COOKING EQUIP.	0.00167
325	SEWING MACHINES	0.00007
326	HOUSEHOLD APPL., N.E.C.	0.00159
327	ELECTRIC LAMPS	0.00318
329	WIRING DEVICES	0.10702
330	RADIO & TV RECEIVING SETS	0.05803
331	PHONOGRAPH RECORDS & TAPE	0.00001
332	TELEPHONE & TELEGRAPH EQUIP.	0.03070
333	RADIO & TV COMM. EQUIPMENT	6.63747
334	ELECTRON TUBES	0.05658
335	SEMICONDUCTORS	0.01858
336	ELECTRONIC CAPACITORS	0.00015
337	RESISTORS, FOR ELEC. APPLIC.	0.00140
338	ELEC. COILS, TRANSFORMERS, ETC	0.00153
340	ELECTRONIC COMPONENTS, N.E.C.	0.87948
341	STORAGE BATTERIES	0.00567
342	PRIMARY BATTERIES, DRY & WET	0.02849
343	X-RAY APPRATUS & TUBES	0.00265
345	ELECTRICAL EQUIP., N.E.C.	0.00493
347	TRUCK TRAILERS	0.00643
348	MOTOR VEHICLES-AUTOS	0.00094
349	MOTOR VEHICLES-OTHER	0.00917
350	MOTOR VEHICLE PARTS & ACCESS.	0.01364
351	AIRCRAFT	7.25564
352	AIRCRAFT ENG. & ENG. PARTS	0.99588
353	AIRCRAFT PARTS & EQUIP., N.E.C	1.82297
354	SHIPBUILDING & REPAIRING	10.65914
355	BOATBUILDING & REPAIRING	0.05798
356	RAILROAD EQUIPMENT	0.00163
357	MOTORCYCLES, BICYCLES & PARTS	0.00025
359	MOBILE HOMES	0.01023
361	ENGINEERING & SCIENTIFIC INST.	0.34628
362	MEASURING & CONTROL INSTRUMENT	0.04051
363	SURGICAL & MEDICAL INSTRUMENTS	0.13953
364	SURGICAL APPLIANCES & SUPPLIES	0.00558
365	DENTAL EQUIP. & SUPPLIES	0.00120
367	OPTICAL INSTR. & LENSES	0.06749
369	PHOTOGRAPHIC EQ. & SUPPLIES	0.01819
374	MUSICL INSTRUMENTS & PARTS	0.00004
375	TOYS AND SPORTING GOODS	0.00161
376	OFFICE & ARTISTS' MATERIALS	0.01180
378	BROOMS, BRUSH, HD SURF FLR. COV.	0.00042
379	MISC. MFGING, DURABLE GOODS.	0.07747
380	RAILROADS & RAIL-RELATED SERV.	0.21884
381	PASSENGER TRANSPORTATION, N.E.C	0.03634
382	MOTOR FREIGHT	0.90997

DRI CODE	INDUSTRY	VECTOR
383	WATER TRANS. & REL. SERVICES	1.11411
384	AIR CARRIERS & REL. SERVICES	0.47755
386	TRANSPORTION SERVICES, N.E.C.	0.03682
387	COMMUNICATIONS, EX. RADIO & TV	0.90328
389	ELECTRIC UTILITIES	1.09797
390	GAS UTILITIES	0.11812
391	WATER & SEWER SERVICES	0.11972
398	REAL ESTATE	0.37080
399	HOTELS & LODGING PLACES	0.22176
403	COMPUTER & DATA PROCESSING	0.96869
404	MGMT & COUSULTING, LABS	8.99044
405	EQUIP. RENTAL & LEASING	0.12658
406	MISC. BUSINESS SERVICES	2.83584
411	OTHER	0.01763
412	LEGAL SERVICES	0.00176
413	ENG., ARCHIT., SURVEYING	1.80575
414	ACCTING.AUDITING & MISC. PROJ.	0.00439
415	EATING & DRINKING PLACES	0.12324
416	AUTO RENTAL & LEASING (W/ODR.)	0.01635
419	AMUSEMENT & RECREATION SERVICE	0.00006
420	DOCTORS & DENTISTS	0.01650
422	NURSING&PERSONAL CARE	0.00096
423	OTHER MEDICAL & HEALTH SERVICE	0.00332
424	EDUCATIONAL SERVICES	0.34775
426	SOCIAL SERVICES, N.E.C.	0.00703
427	U.S. POSTAL SERVICE	0.21790
428	OTHER FED. GOV'T ENTERPRISES	0.06333
430	NONCOMPARABLE IMPORTS	0.28603
431	SCRAP	0.17945
432	FEDERAL EMPLOYEE	28.38597

APPENDIX D.
O&M VECTORS FOR AIR FORCE (ACTIVE)

DRI CODE	INDUSTRY	VECTOR
50	COMPLETE GUIDED MISSILES	7.88024
51	AMMO, EXCEPT SMALL ARMS, N.E.C	0.10992
52	TANKS & TANK COMPONENTS	0.00034
53	SMALL ARMS	0.35572
54	SMALL ARMS AMMUNITION	0.03374
55	OTHER ORDNANCE & ACCESSORIES	0.04962
63	ICE CREAM & FROZEN DESSERTS	0.00102
64	FLUID MILK	0.00048
69	PICKLES, SAUCES & SALAD DRESS.	0.00017
70	FRESH OR FROZEN PACKAGED FISH	0.01727
71	FROZEN FRUITS & VEGETABLES	0.00109
74	BLENDED & PREPARED FLOUR	0.00097
81	SUGAR	0.00032
89	BOTTLED & CANNED SOFT DRINKS	0.00199
94	ANIMAL & MARINE FATS & OILS	0.00014
95	ROASTED COFFEE	0.00387
99	FOOD PREPARATIONS, N.E.C.	0.00977
104	BROADWOVEN FABRIC PLANTS	0.00030
108	FLOOR COVERINGS	0.00614
111	TEXTILE GOODS N.E.C.	0.00322
112	HOSIERY & KNIT GOODS	0.00040
114	APPAREL FROM PURCHASED MATERIAL	0.01254
115	HOUSE FURNISHINGS	0.00231
116	FABRIC TEXTILE PRODUCTS, N.E.C	0.03103
118	SAWMILLS & PLANING MILLS, GEN	0.00041
130	WOODEN CONTAINERS	0.00999
131	WOOD HOUSEHOLD FURNITURE	0.01908
136	MATTRESSES & BEDSPRINGS	0.00206
137	WOOD OFFICE FURNITURE	0.04230
143	FURNITURE & FIXTURES, N.E.C.	0.01511
145	PAPER MILLS, EX. BLDING PAPER	0.00009
149	BLDING PAPER & BOARD MILLS	0.00039
151	BAGS, EXC. TEXTILE BAGS	0.00016
155	PAPERBOARD CONTAINERS & BOXES	0.00067
156	NEWSPAPER	0.00291
158	BOOK PUBLISHING	0.00353
160	MISC. PUBLISHING	0.00473
161	COMMERCIAL PRINTING	0.19638
162	MANIFOLD BUSINESS FORMS	0.00649
168	INORGANIC & ORGANIC CHEMICALS	0.00252
171	AG CHEMICALS, N.E.C.	0.00014
173	ADHESIVES & SEALANTS	0.00023
177	CHEM. PREPARATIONS, N.E.C.	0.06315
178	PLASTIC MATERIALS & RESINS	0.00011
182	DRUGS	0.00069
183	SOAP & OTHER DETERGENTS	0.00124

DRI CODE	INDUSTRY	VECTOR
184	POLISHES & SANITATION GOODS	0.00014
186	TOILET PREPARATIONS	0.00035
187	PAINTS & ALLIED PRODUCTS	0.00057
188	PETROL. REFINING & REL. PROD.	9.13396
189	LUB OILS & GREASES	0.00025
190	PROD OF PETR & COAL NEC	0.00047
193	TIRES & INNER TUBES	0.02784
196	FABRICATED RUBBER PROD., N.E.C	0.00374
197	MISC. PLASTIC PRODUCTS	0.00072
198	HOSE & BELTING	0.00313
200	FOOTWEAR, CUT STOCK	0.00077
203	LUGGAGE	0.00013
204	LEATHER GOODS, N.E.C.	0.00013
209	KITCHEN POTTERY	0.00019
211	CONCRETE BLOCK & BRICK	0.00034
217	ABRASIVE PRODUCTS	0.00054
218	ASBESTOS PROD. & SEALING DEV.	0.00848
222	NONMETALLIC MIN. PROD., N.E.C.	0.00004
223	BLAST FURNACES & STEEL MILLS.	0.00015
225	STEEL WIRE & RELATED PRODUCTS	0.00268
240	NONFER. ROLL. & DRAW., N.E.C.	0.00018
243	BRASS, BRONZE & COPPER CASTING	0.00012
246	METAL CANS	0.00045
247	METAL BARRELS, DRUMS & PAILS	0.00334
248	METAL SANITARY WARE	0.00170
249	PLUMBING FITTINGS & TRIM	0.00743
250	HEATING EQUIP, EXC. ELECTRICAL	0.00173
251	FABRICATED STRUCTURAL METAL	0.00456
253	FABRIC. PLATE WORK (BOILERSHOP	0.00361
254	SHEET METAL WORK	0.00044
255	ARCHITECTURAL METAL WORK	0.00138
256	MISC. METAL WORK	0.03183
257	SCREW MACHINE PRODUCTS	0.01379
259	OTHER METAL STAMPINGS	0.00120
260	CUTLERY	0.00260
261	HAND & EDGE TOOLS, N.E.C.	0.00245
263	HARDWARE, N.E.C.	0.00178
266	MISC. FABRICATED WIRE PRODUCTS	0.00035
267	STEEL SPRINGS	0.00081
268	PIPE VALVES & PIPE FITTINGS	0.03782
270	FABR. METAL PRODUCTS, N.E.C.	0.01516
271	STEAM ENGINES & TURBINES	0.25759
272	INTERNAL COMB. ENGINES, N.E.C.	0.00653
273	FARM MACHINERY	0.00016
274	LAWN & GARDEN EQUIPMENT	0.00081
275	CONSTRUCTION MACHINERY	0.00646

DRI CODE	INDUSTRY	VECTOR
276	MINING MACH., EXC. OIL	0.00131
279	CONVEYORS & CONVEYING EQUIP.	0.01191
280	HOISTS, CRANES & MONORAILS	0.00130
281	INDUSTRIAL TRUCKS & TRACTORS	0.19755
282	MACHINE TOOLS, METAL CUTTING	0.02072
283	MACHINE TOOLS, METAL FORMING	0.00534
284	SPECIAL DIES, TOOLS, ACCESS.	0.00677
285	POWER DRIVEN HAND TOOLS	0.00082
286	ROLLING MILL MACHINERY	0.00005
287	METALWORKING MACHINERY, N.E.C.	0.00090
288	FOOD PRODUCTS MACHINERY	0.00009
289	TEXTILE MACHINERY	0.01981
290	WOODWORKING MACHINERY	0.00018
291	PAPER INDUSTRIES MACHINERY	0.00032
292	PRINTING TRADES MACHINERY	0.00698
293	SP. INDUSTRY MACHINERY, N.E.C.	0.00560
294	PUMPS & COMPRESSORS	0.04177
295	BALL & ROLLER BEARINGS	0.01897
296	BLOWERS & FANS	0.00203
298	POWER TRANSMISSION EQUIPMENT	0.02466
299	INDUSTRIAL FURNACES & OVENS	0.00583
300	GEN. INDUSTRIAL MACH., N.E.C.	0.10035
303	ELECTRONIC COMPUTING EQUIP.	1.22602
304	CALCULATING & ACCOUNTING MACH.	0.00815
306	OFFICE MACHINES, N.E.C.	0.02781
308	COMMERCIAL LAUNDRY EQUIPMENT	0.00459
309	REFRIG. & HEATING EQUIPMENT	0.01273
311	SERVICE INDUSTRY MACH., N.E.C.	0.00853
312	ELECTRIC MEASURING INSTRUMENTS	0.24570
313	TRANSFORMERS	0.00049
314	SWITCHGEAR & SWITCHBOARDS	0.00678
315	MOTORS & GENERATORS	0.13403
316	INDUSTRIAL CONTROLS	0.02755
317	WELDING APPARATUS	0.00049
318	CARBON & GRAPHITE PRODUCTS	0.00009
319	ELECTRIC INDUSTR. APPAR, N.E.C.	0.01167
320	HOUSEHOLD COOKING EQUIP.	0.00110
326	HOUSEHOLD APPL., N.E.C.	0.01136
327	ELECTRIC LAMPS	0.00076
329	WIRING DEVICES	0.01863
330	RADIO & TV RECEIVING SETS	0.01428
331	PHONOGRAPH RECORDS & TAPE	0.00050
332	TELEPHONE & TELEGRAPH EQUIP.	0.07114
333	RADIO & TV COMM. EQUIPMENT	5.65220
334	ELECTRON TUBES	0.03026
335	SEMICONDUCTORS	0.02594

DRI CODE	INDUSTRY	VECTOR
336	ELECTRONIC CAPACITORS	0.00016
337	RESISTORS, FOR ELEC. APPLIC.	0.00419
338	ELEC. COILS, TRANSFORMERS, ETC	0.00392
340	ELECTRONIC COMPONENTS, N.E.C.	0.38015
341	STORAGE BATTERIES	0.00728
342	PRIMARY BATTERIES, DRY & WET	0.00410
343	X-RAY APPRATUS & TUBES	0.00238
345	ELECTRICAL EQUIP., N.E.C.	0.00097
347	TRUCK TRAILERS	0.00551
348	MOTOR VEHICLES-AUTOS	0.00035
349	MOTOR VEHICLES-OTHER	0.03273
350	MOTOR VEHICLE PARTS & ACCESS.	0.02796
351	AIRCRAFT	6.39944
352	AIRCRAFT ENG. & ENG. PARTS	3.33205
353	AIRCRAFT PARTS & EQUIP., N.E.C	2.89644
354	SHIPBUILDING & REPAIRING	0.02651
355	BOATBUILDING & REPAIRING	0.00016
356	RAILROAD EQUIPMENT	0.00053
357	MOTORCYCLES, BICYCLES & PARTS	0.00044
361	ENGINEERING & SCIENTIFIC INST.	7.11775
362	MEASURING & CONTROL INSTRUMENT	2.24719
363	SURGICAL & MEDICAL INSTRUMENTS	0.04119
364	SURGICAL APPLIANCES & SUPPLIES	0.00114
365	DENTAL EQUIP. & SUPPLIES	0.00291
367	OPTICAL INSTR. & LENSES	0.01507
369	PHOTOGRAPHIC EQ. & SUPPLIES	0.02963
374	MUSICL INSTRUMENTS & PARTS	0.00012
375	TOYS AND SPORTING GOODS	0.00204
376	OFFICE & ARTISTS' MATERIALS	0.00036
379	MISC. MFGING, DURABLE GOODS.	2.42705
380	RAILROADS & RAIL-RELATED SERV.	0.51887
381	PASSENGER TRANSPORTATION, N.E.C	0.09201
382	MOTOR FREIGHT	2.15581
383	WATER TRANS. & REL. SERVICES	0.00013
384	AIR CARRIERS & REL. SERVICES	2.01063
386	TRANSPORTION SERVICES, N.E.C.	0.01616
387	COMMUNICATIONS, EX. RADIO & TV	1.68191
389	ELECTRIC UTILITIES	2.56841
390	GAS UTILITIES	0.33518
391	WATER & SEWER SERVICES	0.28001
398	REAL ESTATE	0.67557
399	HOTELS & LODGING PLACES	0.64013
403	COMPUTER & DATA PROCESSING	1.13896
405	EQUIP. RENTAL & LEASING	0.09350
406	MISC. BUSINESS SERVICES	5.06143
411	OTHER	0.01400

DRI CODE	INDUSTRY	VECTOR
412	LEGAL SERVICES	0.00035
413	ENG., ARCHIT., SURVEYING	0.23059
414	ACCTING.AUDITING & MISC. PROJ.	0.00428
415	EATING & DRINKING PLACES	0.36112
416	AUTO RENTAL & LEASING (W/ODR.)	0.04788
419	AMUSEMENT & RECREATION SERVICE	0.00005
420	DOCTORS & DENTISTS	0.00847
422	NURSING&PERSONAL CARE	0.00206
423	OTHER MEDICAL & HEALTH SERVICE	0.01528
424	EDUCATIONAL SERVICES	0.12767
426	SOCIAL SERVICES, N.E.C.	0.00011
427	U.S. POSTAL SERVICE	0.39687
428	OTHER FED. GOV'T ENTERPRISES	0.14687
430	NONCOMPARABLE IMPORTS	1.11128
431	SCRAP	0.42039
432	FEDERAL EMPLOYEE	28.33634

APPENDIX E.
O&M VECTORS FOR MARINE CORPS (ACTIVE)

DRI CODE	INDUSTRY	VECTOR
50	COMPLETE GUIDED MISSILES	6.09296
51	AMMO, EXCEPT SMALL ARMS, N.E.C	0.59791
52	TANKS & TANK COMPONENTS	0.00314
53	SMALL ARMS	0.74281
54	SMALL ARMS AMMUNITION	0.04684
55	OTHER ORDNANCE & ACCESSORIES	0.96661
63	ICE CREAM & FROZEN DESSERTS	0.00645
64	FLUID MILK	0.00011
69	PICKLES, SAUCES & SALAD DRESS.	0.00144
70	FRESH OR FROZEN PACKAGED FISH	0.00261
71	FROZEN FRUITS & VEGETABLES	0.00192
74	BLENDED & PREPARED FLOUR	0.00492
81	SUGAR	0.00037
89	BOTTLED & CANNED SOFT DRINKS	0.00286
94	ANIMAL & MARINE FATS & OILS	0.00012
95	ROASTED COFFEE	0.00093
99	FOOD PREPARATIONS, N.E.C.	0.02396
104	BROADWOVEN FABRIC PLANTS	0.00112
108	FLOOR COVERINGS	0.00244
111	TEXTILE GOODS N.E.C.	0.00322
114	APPAREL FROM PURCHASED MATERIAL	0.02976
115	HOUSE FURNISHINGS	0.00093
116	FABRIC TEXTILE PRODUCTS, N.E.C	0.00528
118	SAWMILLS & PLANING MILLS, GEN	0.00045
121	MILLWORK	0.00007
123	VENEER & PLYWOOD	0.00029
130	WOODEN CONTAINERS	0.07016
131	WOOD HOUSEHOLD FURNITURE	0.01123
136	MATTRESSES & BEDSPRINGS	0.00046
137	WOOD OFFICE FURNITURE	0.02557
143	FURNITURE & FIXTURES, N.E.C.	0.00796
147	ENVELOPES	0.02010
149	BLDING PAPER & BOARD MILLS	0.00106
151	BAGS, EXC. TEXTILE BAGS	0.00133
154	STATIONARY & MISC. PAPER	0.01066
155	PAPERBOARD CONTAINERS & BOXES	0.00368
156	NEWSPAPER	0.00802
157	PERIODICALS	0.00139
158	BOOK PUBLISHING	0.00480
160	MISC. PUBLISHING	0.12583
161	COMMERCIAL PRINTING	0.28381
162	MANIFOLD BUSINESS FORMS	0.00507
168	INORGANIC & ORGANIC CHEMICALS	2.76756
173	ADHESIVES & SEALANTS	0.00145
174	EXPLOSIVES	0.00182
177	CHEM. PREPARATIONS, N.E.C.	0.00506

DRI CODE	INDUSTRY	VECTOR
178	PLASTIC MATERIALS & RESINS	0.00007
182	DRUGS	0.00315
183	SOAP & OTHER DETERGENTS	0.00141
186	TOILET PREPARATIONS	0.00190
187	PAINTS & ALLIED PRODUCTS	0.00348
188	PETROL. REFINING & REL. PROD.	1.16376
189	LUB OILS & GREASES	0.00159
190	PROD OF PETR & COAL NEC	0.00158
193	TIRES & INNER TUBES	0.00574
196	FABRICATED RUBBER PROD., N.E.C	0.01650
197	MISC. PLASTIC PRODUCTS	0.00951
198	HOSE & BELTING	0.00267
200	FOOTWEAR, CUT STOCK	0.00014
203	LUGGAGE	0.00004
205	GLASS & PROD., EXC. CONTAINERS	0.00015
206	GLASS CONTAINERS	0.00006
208	STRUCTURAL CLAY PRODUCTS	0.00043
209	KITCHEN POTTERY	0.00015
211	CONCRETE BLOCK & BRICK	0.00020
212	CONCRETE PRODUCTS, N.E.C.	0.00009
217	ABRASIVE PRODUCTS	0.00225
218	ASBESTOS PROD. & SEALING DEV.	0.00657
222	NONMETALLIC MIN. PROD., N.E.C.	0.00196
223	BLAST FURNACES & STEEL MILLS	0.01024
224	ELECTROMETALLURGICAL PRODUCTS	0.00007
225	STEEL WIRE & RELATED PRODUCTS	0.00321
227	STEEL PIPES & TUBES	0.00051
231	PRIMARY METAL PRODUCTS, N.E.C.	0.00152
236	PRIM. NONFERROUS METALS, N.E.C	0.00093
240	NONFER. ROLL. & DRAW., N.E.C.	0.00523
241	NONF.WIRE DRAW. & INSULATING	0.00005
243	BRASS, BRONZE & COPPER CASTING	0.21310
246	METAL CANS	0.00016
247	METAL BARRELS, DRUMS & PAILS	0.00009
248	METAL SANITARY WARE	0.00199
249	PLUMBING FITTINGS & TRIM	0.00067
250	HEATING EQUIP, EXC. ELECTRICAL	0.00069
251	FABRICATED STRUCTURAL METAL	0.00391
253	FABRIC. PLATE WORK (BOILERSHOP	0.85053
254	SHEET METAL WORK	0.00069
255	ARCHITECTURAL METAL WORK	0.00221
256	MISC. METAL WORK	0.03876
257	SCREW MACHINE PRODUCTS	0.00882
259	OTHER METAL STAMPINGS	0.00031
260	CUTLERY	0.00008
261	HAND & EDGE TOOLS, N.E.C.	0.00739

DRI CODE	INDUSTRY	VECTOR
263	HARDWARE, N.E.C.	0.28892
266	MISC. FABRICATED WIRE PRODUCTS	0.00407
267	STEEL SPRINGS	0.00004
268	PIPE VALVES & PIPE FITTINGS	0.06792
270	FABR. METAL PRODUCTS, N.E.C.	0.02783
271	STEAM ENGINES & TURBINES	0.10968
272	INTERNAL COMB. ENGINES, N.E.C.	0.17666
273	FARM MACHINERY	0.00029
274	LAWN & GARDEN EQUIPMENT	0.00036
275	CONSTRUCTION MACHINERY	0.01298
276	MINING MACH., EXC. OIL	0.00377
278	ELEVATORS & MOVING STAIRWAYS	0.00019
279	CONVEYORS & CONVEYING EQUIP.	0.00132
280	HOISTS, CRANES & MONORAILS	0.03734
281	INDUSTRIAL TRUCKS & TRACTORS	0.13752
282	MACHINE TOOLS, METAL CUTTING	0.04206
283	MACHINE TOOLS, METAL FORMING	0.00967
284	SPECIAL DIES, TOOLS, ACCESS.	0.00314
285	POWER DRIVEN HAND TOOLS	0.00144
287	METALWORKING MACHINERY, N.E.C.	0.00872
288	FOOD PRODUCTS MACHINERY	0.00002
289	TEXTILE MACHINERY	0.00032
290	WOODWORKING MACHINERY	0.00097
291	PAPER INDUSTRIES MACHINERY	0.00018
292	PRINTING TRADES MACHINERY	0.01502
293	SP. INDUSTRY MACHINERY, N.E.C.	0.02458
294	PUMPS & COMPRESSORS	0.04064
295	BALL & ROLLER BEARINGS	0.01777
296	BLOWERS & FANS	0.02317
298	POWER TRANSMISSION EQUIPMENT	0.02736
299	INDUSTRIAL FURNACES & OVENS	0.00365
300	GEN. INDUSTRIAL MACH., N.E.C.	0.03806
303	ELECTRONIC COMPUTING EQUIP.	0.76272
304	CALCULATING & ACCOUNTING MACH.	0.00159
306	OFFICE MACHINES, N.E.C.	0.01563
308	COMMERCIAL LAUNDRY EQUIPMENT	0.00273
309	REFRIG. & HEATING EQUIPMENT	0.02081
311	SERVICE INDUSTRY MACH., N.E.C.	0.01422
312	ELECTRIC MEASURING INSTRUMENTS	0.16617
313	TRANSFORMERS	0.00118
314	SWITCHGEAR & SWITCHBOARDS	0.01389
315	MOTORS & GENERATORS	0.10850
316	INDUSTRIAL CONTROLS	0.01484
317	WELDING APPARATUS	0.00221
318	CARBON & GRAPHITE PRODUCTS	0.00013
319	ELECTRIC INDUSTR. APPAR, N.E.C	0.03311

DRI CODE	INDUSTRY	VECTOR
320	HOUSEHOLD COOKING EQUIP.	0.00146
325	SEWING MACHINES	0.00006
326	HOUSEHOLD APPL., N.E.C.	0.00139
327	ELECTRIC LAMPS	0.00277
329	WIRING DEVICES	0.09318
330	RADIO & TV RECEIVING SETS	0.05052
331	PHONOGRAPH RECORDS & TAPE	0.00001
332	TELEPHONE & TELEGRAPH EQUIP.	0.02673
333	RADIO & TV COMM. EQUIPMENT	5.77918
334	ELECTRON TUBES	0.04926
335	SEMICONDUCTORS	0.01618
336	ELECTRONIC CAPACITORS	0.00013
337	RESISTORS, FOR ELEC. APPLIC.	0.00122
338	ELEC. COILS, TRANSFORMERS, ETC	0.00133
340	ELECTRONIC COMPONENTS, N.E.C.	0.76575
341	STORAGE BATTERIES	0.00494
342	PRIMARY BATTERIES, DRY & WET	0.02480
343	X-RAY APPRATUS & TUBES	0.00231
345	ELECTRICAL EQUIP., N.E.C.	0.00429
347	TRUCK TRAILERS	0.00559
348	MOTOR VEHICLES-AUTOS	0.00082
349	MOTOR VEHICLES-OTHER	0.00798
350	MOTOR VEHICLE PARTS & ACCESS.	0.01188
351	AIRCRAFT	6.31742
352	AIRCRAFT ENG. & ENG. PARTS	0.86710
353	AIRCRAFT PARTS & EQUIP., N.E.C	1.58724
354	SHIPBUILDING & REPAIRING	9.28081
355	BOATBUILDING & REPAIRING	0.05049
356	RAILROAD EQUIPMENT	0.00142
357	MOTORCYCLES, BICYCLES & PARTS	0.00022
359	MOBILE HOMES	0.00891
361	ENGINEERING & SCIENTIFIC INST.	0.30151
362	MEASURING & CONTROL INSTRUMENT	0.03527
363	SURGICAL & MEDICAL INSTRUMENTS	0.15458
364	SURGICAL APPLIANCES & SUPPLIES	0.00486
365	DENTAL EQUIP. & SUPPLIES	0.00105
367	OPTICAL INSTR. & LENSES	0.05876
369	PHOTOGRAPHIC EQ. & SUPPLIES	0.01584
374	MUSICL INSTRUMENTS & PARTS	0.00003
375	TOYS AND SPORTING GOODS	0.00141
376	OFFICE & ARTISTS' MATERIALS	0.01303
378	BROOMS, BRUSH, HD SURF FLR. COV.	0.00037
379	MISC. MFGING, DURABLE GOODS.	0.06746
380	RAILROADS & RAIL-RELATED SERV.	0.57822
381	PASSENGER TRANSPORTATION, N.E.C	0.11947
382	MOTOR FREIGHT	2.39391

DRI CODE	INDUSTRY	VECTOR
383	WATER TRANS. & REL. SERVICES	0.97004
384	AIR CARRIERS & REL. SERVICES	1.83399
386	TRANSPORTION SERVICES, N.E.C.	0.03206
387	COMMUNICATIONS, EX. RADIO & TV	1.94420
389	ELECTRIC UTILITIES	2.36147
390	GAS UTILITIES	0.25425
391	WATER & SEWER SERVICES	0.25769
398	REAL ESTATE	0.79811
399	HOTELS & LODGING PLACES	0.86243
403	COMPUTER & DATA PROCESSING	0.84343
404	MGMT & COUSULTING, LABS	10.12957
405	EQUIP. RENTAL & LEASING	0.11021
406	MISC. BUSINESS SERVICES	2.46914
411	OTHER	0.01535
412	LEGAL SERVICES	0.00153
413	ENG., ARCHIT., SURVEYING	1.57225
414	ACCTING.AUDITING & MISC. PROJ.	0.00383
415	EATING & DRINKING PLACES	0.48556
416	AUTO RENTAL & LEASING (W/ODR.)	0.06441
419	AMUSEMENT & RECREATION SERVICE	0.00005
420	DOCTORS & DENTISTS	0.01437
422	NURSING&PERSONAL CARE	0.00084
423	OTHER MEDICAL & HEALTH SERVICE	0.00289
424	EDUCATIONAL SERVICES	0.30278
426	SOCIAL SERVICES, N.E.C.	0.00612
427	U.S. POSTAL SERVICE	0.46900
428	OTHER FED. GOV'T ENTERPRISES	0.05666
430	NONCOMPARABLE IMPORTS	2.50837
432	FEDERAL EMPLOYEE	26.36381

APPENDIX F.
O&M VECTORS FOR DEFENSE AGENCIES

DRI CODE	INDUSTRY	VECTOR
50	COMPLETE GUIDED MISSILES	0.00298
51	AMMO, EXCEPT SMALL ARMS, N.E.C	0.00007
52	TANKS & TANK COMPONENTS	0.00055
53	SMALL ARMS	0.00389
55	OTHER ORDNANCE & ACCESSORIES	0.00298
63	ICE CREAM & FROZEN DESSERTS	0.17675
69	PICKLES, SAUCES & SALAD DRESS.	0.07093
70	FRESH OR FROZEN PACKAGED FISH	0.86165
71	FROZEN FRUITS & VEGETABLES	0.27823
74	BLENDED & PREPARED FLOUR	0.23567
81	SUGAR	0.08919
89	BOTTLED & CANNED SOFT DRINKS	0.02618
94	ANIMAL & MARINE FATS & OILS	0.02348
95	ROASTED COFFEE	0.04022
99	FOOD PREPARATIONS, N.E.C.	0.41933
104	BROADWOVEN FABRIC PLANTS	0.18661
106	YARN MILLS & TEXTILE FINISHING	0.00008
108	FLOOR COVERINGS	0.00051
111	TEXTILE GOODS N.E.C.	0.01508
112	HOSIERY & KNIT GOODS	0.04789
114	APPAREL FROM PURCHASED MATERIAL	1.26820
116	FABRIC TEXTILE PRODUCTS, N.E.C	0.13649
118	SAWMILLS & PLANING MILLS, GEN	0.02399
121	MILLWORK	0.00029
123	VENEER & PLYWOOD	0.01058
130	WOODEN CONTAINERS	0.00380
131	WOOD HOUSEHOLD FURNITURE	0.01264
136	MATTRESSES & BEDSPRINGS	0.02604
137	WOOD OFFICE FURNITURE	0.03024
143	FURNITURE & FIXTURES, N.E.C.	0.03565
145	PAPER MILLS, EX. BLDING PAPER	0.00256
147	ENVELOPES	0.00623
151	BAGS, EXC. TEXTILE BAGS	0.00965
154	STATIONARY & MISC. PAPER	0.00330
155	PAPERBOARD CONTAINERS & BOXES	0.01591
156	NEWSPAPER	0.00214
157	PERIODICALS	0.00043
158	BOOK PUBLISHING	0.00474
160	MISC. PUBLISHING	0.01469
161	COMMERCIAL PRINTING	0.43292
162	MANIFOLD BUSINESS FORMS	0.00478
168	INORGANIC & ORGANIC CHEMICALS	1.00969
171	AG CHEMICALS, N.E.C.	0.01648
177	CHEM. PREPARATIONS, N.E.C.	0.04247
182	DRUGS	0.47820
183	SOAP & OTHER DETERGENTS	0.05899

DRI CODE	INDUSTRY	VECTOR
186	TOILET PREPARATIONS	0.06410
188	PETROL. REFINING & REL. PROD.	0.06262
189	LUB OILS & GREASES	0.12316
190	PROD OF PETR & COAL NEC	0.00104
196	FABRICATED RUBBER PROD., N.E.C	0.01001
197	MISC. PLASTIC PRODUCTS	0.01658
198	HOSE & BELTING	0.02825
200	FOOTWEAR, CUT STOCK	0.30939
203	LUGGAGE	0.01313
205	GLASS & PROD., EXC. CONTAINERS	0.00072
206	GLASS CONTAINERS	0.00015
209	KITCHEN POTTERY	0.00724
212	CONCRETE PRODUCTS, N.E.C.	0.00018
218	ASBESTOS PROD. & SEALING DEV.	0.01706
221	NONCLAY REFRACTORIES	0.00033
222	NONMETALLIC MIN. PROD., N.E.C.	0.00101
223	BLAST FURNACES & STEEL MILLS	0.03824
225	STEEL WIRE & RELATED PRODUCTS	0.00084
231	PRIMARY METAL PRODUCTS, N.E.C.	0.00242
240	NONFER. ROLL. & DRAW., N.E.C.	0.03259
241	NONF.WIRE DRAW. & INSULATING	0.00017
243	BRASS, BRONZE & COPPER CASTING	0.00340
246	METAL CANS	0.00159
248	METAL SANITARY WARE	0.00261
249	PLUMBING FITTINGS & TRIM	0.00501
250	HEATING EQUIP, EXC. ELECTRICAL	0.00082
251	FABRICATED STRUCTURAL METAL	0.00020
253	FABRIC. PLATE WORK (BOILERSHOP	0.01021
255	ARCHITECTURAL METAL WORK	0.00193
256	MISC. METAL WORK	0.00862
257	SCREW MACHINE PRODUCTS	0.07649
259	OTHER METAL STAMPINGS	0.00013
260	CUTLERY	0.00070
263	HARDWARE, N.E.C.	0.02559
266	MISC. FABRICATED WIRE PRODUCTS	0.02351
267	STEEL SPRINGS	0.00076
268	PIPE VALVES & PIPE FITTINGS	0.11002
270	FABR. METAL PRODUCTS, N.E.C.	0.00711
271	STEAM ENGINES & TURBINES	0.01985
272	INTERNAL COMB. ENGINES, N.E.C.	0.02203
273	FARM MACHINERY	0.00076
275	CONSTRUCTION MACHINERY	0.22904
276	MINING MACH., EXC. OIL	0.00479
277	OIL FIELD MACHINERY	0.00187
279	CONVEYORS & CONVEYING EQUIP.	0.00294
280	HOISTS, CRANES & MONORAILS	0.00473

DRI CODE	INDUSTRY	VECTOR
281	INDUSTRIAL TRUCKS & TRACTORS	0.23630
282	MACHINE TOOLS, METAL CUTTING	0.00253
283	MACHINE TOOLS, METAL FORMING	0.00256
284	SPECIAL DIES, TOOLS, ACCESS.	0.00254
285	POWER DRIVEN HAND TOOLS	0.00026
287	METALWORKING MACHINERY, N.E.C.	0.01482
289	TEXTILE MACHINERY	0.00171
290	WOODWORKING MACHINERY	0.00012
291	PAPER INDUSTRIES MACHINERY	0.00206
292	PRINTING TRADES MACHINERY	0.01044
293	SP. INDUSTRY MACHINERY, N.E.C.	0.00582
294	PUMPS & COMPRESSORS	0.05571
295	BALL & ROLLER BEARINGS	0.04382
296	BLOWERS & FANS	0.01069
298	POWER TRANSMISSION EQUIPMENT	0.04003
299	INDUSTRIAL FURNACES & OVENS	0.00128
300	GEN. INDUSTRIAL MACH., N.E.C.	0.08553
303	ELECTRONIC COMPUTING EQUIP.	0.52927
304	CALCULATING & ACCOUNTING MACH.	0.00070
306	OFFICE MACHINES, N.E.C.	0.04954
308	COMMERCIAL LAUNDRY EQUIPMENT	0.00373
309	REFRIG. & HEATING EQUIPMENT	0.02822
311	SERVICE INDUSTRY MACH., N.E.C.	0.02579
312	ELECTRIC MEASURING INSTRUMENTS	0.03007
313	TRANSFORMERS	0.00431
314	SWITCHGEAR & SWITCHBOARDS	0.05020
315	MOTORS & GENERATORS	0.04777
316	INDUSTRIAL CONTROLS	0.02312
317	WELDING APPARATUS	0.00275
318	CARBON & GRAPHITE PRODUCTS	0.00228
319	ELECTRIC INDUSTR. APPAR, N.E.C.	0.00335
320	HOUSEHOLD COOKING EQUIP.	0.00926
325	SEWING MACHINES	0.00105
326	HOUSEHOLD APPL., N.E.C.	0.00871
327	ELECTRIC LAMPS	0.00917
329	WIRING DEVICES	0.14370
330	RADIO & TV RECEIVING SETS	0.05371
332	TELEPHONE & TELEGRAPH EQUIP.	0.03157
333	RADIO & TV COMM. EQUIPMENT	0.09657
334	ELECTRON TUBES	0.10274
335	SEMICONDUCTORS	0.04278
336	ELECTRONIC CAPACITORS	0.00294
337	RESISTORS, FOR ELEC. APPLIC.	0.00661
338	ELEC. COILS, TRANSFORMERS, ETC	0.01139
340	ELECTRONIC COMPONENTS, N.E.C.	0.08394
341	STORAGE BATTERIES	0.01627

DRI CODE	INDUSTRY	VECTOR
342	PRIMARY BATTERIES, DRY & WET	0.00658
343	X-RAY APPRATUS & TUBES	0.08241
345	ELECTRICAL EQUIP., N.E.C.	0.01356
347	TRUCK TRAILERS	0.00005
348	MOTOR VEHICLES-AUTOS	0.00039
349	MOTOR VEHICLES-OTHER	0.00409
350	MOTOR VEHICLE PARTS & ACCESS.	0.08096
352	AIRCRAFT ENG. & ENG. PARTS	0.06886
353	AIRCRAFT PARTS & EQUIP., N.E.C	0.08868
354	SHIPBUILDING & REPAIRING	0.00058
356	RAILROAD EQUIPMENT	0.00023
357	MOTORCYCLES, BICYCLES & PARTS	0.00028
361	ENGINEERING & SCIENTIFIC INST.	0.02966
362	MEASURING & CONTROL INSTRUMENT	0.12104
363	SURGICAL & MEDICAL INSTRUMENTS	0.13498
364	SURGICAL APPLIANCES & SUPPLIES	0.04010
365	DENTAL EQUIP. & SUPPLIES	0.00672
367	OPTICAL INSTR. & LENSES	0.04309
369	PHOTOGRAPHIC EQ. & SUPPLIES	0.02103
374	MUSICL INSTRUMENTS & PARTS	0.00111
376	OFFICE & ARTISTS' MATERIALS	0.00481
378	BROOMS, BRUSH, HD SURF FLR. COV.	0.00069
379	MISC. MFGING, DURABLE GOODS.	0.63600
380	RAILROADS & RAIL-RELATED SERV.	0.95931
381	PASSENGER TRANSPORTATION, N.E.C	0.12171
382	MOTOR FREIGHT	3.96323
384	AIR CARRIERS & REL. SERVICES	1.95116
386	TRANSPORTION SERVICES, N.E.C.	0.00092
387	COMMUNICATIONS, EX. RADIO & TV	2.65017
389	ELECTRIC UTILITIES	2.43620
390	GAS UTILITIES	0.26350
391	WATER & SEWER SERVICES	0.26508
398	REAL ESTATE	0.82105
399	HOTELS & LODGING PLACES	0.92201
403	COMPUTER & DATA PROCESSING	0.40455
404	MGMT & COUSULTING, LABS	3.14025
405	EQUIP. RENTAL & LEASING	0.33938
406	MISC. BUSINESS SERVICES	1.89956
411	OTHER	0.10539
412	LEGAL SERVICES	0.00013
413	ENG., ARCHIT., SURVEYING	0.02055
414	ACCTING.AUDITING & MISC. PROJ.	0.02181
415	EATING & DRINKING PLACES	0.52041
416	AUTO RENTAL & LEASING (W/ODR.)	0.06903
420	DOCTORS & DENTISTS	0.00015
422	NURSING&PERSONAL CARE	0.24597

DRI CODE	INDUSTRY	VECTOR
423	OTHER MEDICAL & HEALTH SERVICE	0.05643
424	EDUCATIONAL SERVICES	0.00246
426	SOCIAL SERVICES, N.E.C.	0.23636
427	U.S. POSTAL SERVICE	0.48245
428	OTHER FED. GOV'T ENTERPRISES	0.00299
430	NONCOMPARABLE IMPORTS	0.77018
432	FEDERAL EMPLOYEE	66.57667

APPENDIX G.
O&M VECTORS FOR ARMY (RESERVE)

DRI CODE	INDUSTRY	VECTOR
50	COMPLETE GUIDED MISSILES	3.09810
51	AMMO, EXCEPT SMALL ARMS, N.E.C	3.13469
52	TANKS & TANK COMPONENTS	6.35379
53	SMALL ARMS	0.32246
54	SMALL ARMS AMMUNITION	0.16508
55	OTHER ORDNANCE & ACCESSORIES	0.24888
63	ICE CREAM & FROZEN DESSERTS	0.02258
64	FLUID MILK	0.03531
69	PICKLES, SAUCES & SALAD DRESS.	0.00009
70	FRESH OR FROZEN PACKAGED FISH	0.00283
71	FROZEN FRUITS & VEGETABLES	0.00003
74	BLENDED & PREPARED FLOUR	0.00435
89	BOTTLED & CANNED SOFT DRINKS	0.00104
99	FOOD PREPARATIONS, N.E.C.	0.06248
104	BROADWOVEN FABRIC PLANTS	0.00349
108	FLOOR COVERINGS	0.00189
111	TEXTILE GOODS N.E.C.	0.01211
112	HOSIERY & KNIT GOODS	1.22000
114	APPAREL FROM PURCHASED MATERIAL	0.00625
115	HOUSE FURNISHINGS	0.00070
116	FABRIC TEXTILE PRODUCTS, N.E.C	0.02466
118	SAWMILLS & PLANING MILLS, GEN	0.00261
123	VENEER & PLYWOOD	0.00020
130	WOODEN CONTAINERS	0.02497
131	WOOD HOUSEHOLD FURNITURE	0.00948
136	MATTRESSES & BEDSPRINGS	0.00073
137	WOOD OFFICE FURNITURE	0.03709
143	FURNITURE & FIXTURES, N.E.C.	0.03102
145	PAPER MILLS, EX. BLDING PAPER	0.00162
149	BLDING PAPER & BOARD MILLS	0.00077
151	BAGS, EXC. TEXTILE BAGS	0.00021
155	PAPERBOARD CONTAINERS & BOXES	0.00167
156	NEWSPAPER	0.00127
158	BOOK PUBLISHING	0.00489
160	MISC. PUBLISHING	0.00451
161	COMMERCIAL PRINTING	0.89053
162	MANIFOLD BUSINESS FORMS	0.00567
168	INORGANIC & ORGANIC CHEMICALS	0.01142
171	AG CHEMICALS, N.E.C.	0.00019
173	ADHESIVES & SEALANTS	0.00011
174	EXPLOSIVES	0.04347
177	CHEM. PREPARATIONS, N.E.C.	0.02098
182	DRUGS	0.00771
183	SOAP & OTHER DETERGENTS	0.00009
184	POLISHES & SANITATION GOODS	0.00132
187	PAINTS & ALLIED PRODUCTS	0.00041

DRI CODE	INDUSTRY	VECTOR
188	PETROL. REFINING & REL. PROD.	1.61911
189	LUB OILS & GREASES	0.00015
193	TIRES & INNER TUBES	0.04736
196	FABRICATED RUBBER PROD., N.E.C	0.00041
197	MISC. PLASTIC PRODUCTS	0.00030
198	HOSE & BELTING	0.00215
200	FOOTWEAR, CUT STOCK	0.00020
204	LEATHER GOODS, N.E.C.	0.00152
205	GLASS & PROD., EXC. CONTAINERS	0.00054
208	STRUCTURAL CLAY PRODUCTS	0.00398
209	KITCHEN POTTERY	0.00023
211	CONCRETE BLOCK & BRICK	0.00315
212	CONCRETE PRODUCTS, N.E.C.	0.00008
217	ABRASIVE PRODUCTS	0.00022
218	ASBESTOS PROD. & SEALING DEV.	0.00478
222	NONMETALLIC MIN. PROD., N.E.C.	0.00081
223	BLAST FURNACES & STEEL MILLS	0.00586
224	ELECTROMETALLURGICAL PRODUCTS	0.00009
225	STEEL WIRE & RELATED PRODUCTS	0.00092
231	PRIMARY METAL PRODUCTS, N.E.C.	0.00008
240	NONFER. ROLL. & DRAW., N.E.C.	0.00213
241	NONF.WIRE DRAW. & INSULATING	0.00008
243	BRASS, BRONZE & COPPER CASTING	0.00047
246	METAL CANS	0.00194
247	METAL BARRELS, DRUMS & PAILS	0.00051
248	METAL SANITARY WARE	0.00113
249	PLUMBING FITTINGS & TRIM	0.00083
250	HEATING EQUIP, EXC. ELECTRICAL	0.00308
251	FABRICATED STRUCTURAL METAL	0.07388
253	FABRIC. PLATE WORK (BOILERSHOP	0.01779
255	ARCHITECTURAL METAL WORK	0.00066
256	MISC. METAL WORK	0.07312
257	SCREW MACHINE PRODUCTS	0.00925
259	OTHER METAL STAMPINGS	0.00020
260	CUTLERY	0.01670
261	HAND & EDGE TOOLS, N.E.C.	0.00629
263	HARDWARE, N.E.C.	0.00503
266	MISC. FABRICATED WIRE PRODUCTS	0.00253
267	STEEL SPRINGS	0.00074
268	PIPE VALVES & PIPE FITTINGS	0.01449
270	FABR. METAL PRODUCTS, N.E.C.	0.04166
271	STEAM ENGINES & TURBINES	0.36879
272	INTERNAL COMB. ENGINES, N.E.C.	0.08388
273	FARM MACHINERY	0.00083
274	LAWN & GARDEN EQUIPMENT	0.00079
275	CONSTRUCTION MACHINERY	0.06890

DRI CODE	INDUSTRY	VECTOR
276	MINING MACH., EXC. OIL	0.01255
277	OIL FIELD MACHINERY	0.00642
279	CONVEYORS & CONVEYING EQUIP.	0.00027
280	HOISTS, CRANES & MONORAILS	0.02618
281	INDUSTRIAL TRUCKS & TRACTORS	0.14728
282	MACHINE TOOLS, METAL CUTTING	0.02449
283	MACHINE TOOLS, METAL FORMING	0.00591
284	SPECIAL DIES, TOOLS, ACCESS.	0.00183
285	POWER DRIVEN HAND TOOLS	0.00066
286	ROLLING MILL MACHINERY	0.00012
287	METALWORKING MACHINERY, N.E.C.	0.00915
288	FOOD PRODUCTS MACHINERY	0.00010
289	TEXTILE MACHINERY	0.01898
290	WOODWORKING MACHINERY	0.00031
291	PAPER INDUSTRIES MACHINERY	0.00053
292	PRINTING TRADES MACHINERY	0.01088
293	SP. INDUSTRY MACHINERY, N.E.C.	0.04444
294	PUMPS & COMPRESSORS	0.01375
295	BALL & ROLLER BEARINGS	0.01096
296	BLOWERS & FANS	0.00562
298	POWER TRANSMISSION EQUIPMENT	0.02891
299	INDUSTRIAL FURNACES & OVENS	0.00244
300	GEN. INDUSTRIAL MACH., N.E.C.	0.07075
303	ELECTRONIC COMPUTING EQUIP.	0.79536
304	CALCULATING & ACCOUNTING MACH.	0.00778
306	OFFICE MACHINES, N.E.C.	0.00807
307	AUTO. MERCHANDISING MACHINERY	0.00019
308	COMMERCIAL LAUNDRY EQUIPMENT	0.01614
309	REFRIG. & HEATING EQUIPMENT	0.03013
311	SERVICE INDUSTRY MACH., N.E.C.	0.02064
312	ELECTRIC MEASURING INSTRUMENTS	0.07355
313	TRANSFORMERS	0.00287
314	SWITCHGEAR & SWITCHBOARDS	0.01002
315	MOTORS & GENERATORS	0.16218
316	INDUSTRIAL CONTROLS	0.01101
318	CARBON & GRAPHITE PRODUCTS	0.00015
319	ELECTRIC INDUSTR. APPAR, N.E.C	0.48383
320	HOUSEHOLD COOKING EQUIP.	0.00044
326	HOUSEHOLD APPL., N.E.C.	0.01000
327	ELECTRIC LAMPS	0.00004
328	LIGHTING FIXTURES	0.00034
329	WIRING DEVICES	0.01329
330	RADIO & TV RECEIVING SETS	0.01406
331	PHONOGRAPH RECORDS & TAPE	0.00037
332	TELEPHONE & TELEGRAPH EQUIP.	0.10318
333	RADIO & TV COMM. EQUIPMENT	9.80423

DRI CODE	INDUSTRY	VECTOR
334	ELECTRON TUBES	0.01406
335	SEMICONDUCTORS	0.00517
336	ELECTRONIC CAPACITORS	0.00030
337	RESISTORS, FOR ELEC. APPLIC.	0.00039
338	ELEC. COILS, TRANSFORMERS, ETC	0.00080
340	ELECTRONIC COMPONENTS, N.E.C.	0.08529
341	STORAGE BATTERIES	0.01903
342	PRIMARY BATTERIES, DRY & WET	0.05832
343	X-RAY APPRATUS & TUBES	0.00259
345	ELECTRICAL EQUIP., N.E.C.	0.00643
347	TRUCK TRAILERS	0.71355
348	MOTOR VEHICLES-AUTOS	4.13652
349	MOTOR VEHICLES-OTHER	1.08352
350	MOTOR VEHICLE PARTS & ACCESS.	1.20278
351	AIRCRAFT	2.15466
352	AIRCRAFT ENG. & ENG. PARTS	0.42582
353	AIRCRAFT PARTS & EQUIP., N.E.C	0.59164
354	SHIPBUILDING & REPAIRING	0.11826
355	BOATBUILDING & REPAIRING	0.00636
356	RAILROAD EQUIPMENT	0.00448
357	MOTORCYCLES, BICYCLES & PARTS	0.00038
361	ENGINEERING & SCIENTIFIC INST.	0.59794
362	MEASURING & CONTROL INSTRUMENT	0.63440
363	SURGICAL & MEDICAL INSTRUMENTS	0.01972
364	SURGICAL APPLIANCES & SUPPLIES	0.00538
365	DENTAL EQUIP. & SUPPLIES	0.00047
367	OPTICAL INSTR. & LENSES	0.21300
369	PHOTOGRAPHIC EQ. & SUPPLIES	0.01045
370	JEWELRY, PRECIOUS METAL	0.00003
374	MUSICL INSTRUMENTS & PARTS	0.00043
375	TOYS AND SPORTING GOODS	0.00253
376	OFFICE & ARTISTS' MATERIALS	0.00098
379	MISC. MFGING, DURABLE GOODS.	0.30985
380	RAILROADS & RAIL-RELATED SERV.	0.08083
381	PASSENGER TRANSPORTATION, N.E.C	0.29474
382	MOTOR FREIGHT	0.35626
383	WATER TRANS. & REL. SERVICES	0.00042
384	AIR CARRIERS & REL. SERVICES	4.51638
386	TRANSPORTION SERVICES, N.E.C.	0.09951
387	COMMUNICATIONS, EX. RADIO & TV	1.73935
389	ELECTRIC UTILITIES	2.34244
390	GAS UTILITIES	0.33135
391	WATER & SEWER SERVICES	0.25080
398	REAL ESTATE	0.67461
399	HOTELS & LODGING PLACES	2.14022
403	COMPUTER & DATA PROCESSING	0.37857

DRI CODE	INDUSTRY	VECTOR
405	EQUIP. RENTAL & LEASING	0.12095
406	MISC. BUSINESS SERVICES	2.91927
411	OTHER	0.01006
412	LEGAL SERVICES	0.00010
413	ENG., ARCHIT., SURVEYING	0.87705
415	EATING & DRINKING PLACES	1.20695
416	AUTO RENTAL & LEASING (W/ODR.)	0.15977
419	AMUSEMENT & RECREATION SERVICE	0.00062
420	DOCTORS & DENTISTS	0.03397
422	NURSING&PERSONAL CARE	0.02084
423	OTHER MEDICAL & HEALTH SERVICE	0.14484
424	EDUCATIONAL SERVICES	0.30825
426	SOCIAL SERVICES, N.E.C.	0.00247
427	U.S. POSTAL SERVICE	0.39632
428	OTHER FED. GOV'T ENTERPRISES	0.03690
432	FEDERAL EMPLOYEE	37.80880

APPENDIX H.
O&M VECTORS FOR NAVY (RESERVE)

DRI CODE	INDUSTRY	VECTOR
50	COMPLETE GUIDED MISSILES	7.62842
51	AMMO, EXCEPT SMALL ARMS, N.E.C	0.74858
52	TANKS & TANK COMPONENTS	0.00393
53	SMALL ARMS	0.93000
54	SMALL ARMS AMMUNITION	0.05864
55	OTHER ORDNANCE & ACCESSORIES	1.21020
63	ICE CREAM & FROZEN DESSERTS	0.00808
64	FLUID MILK	0.00014
69	PICKLES, SAUCES & SALAD DRESS.	0.00180
70	FRESH OR FROZEN PACKAGED FISH	0.00327
71	FROZEN FRUITS & VEGETABLES	0.00241
74	BLENDED & PREPARED FLOUR	0.00616
81	SUGAR	0.00046
89	BOTTLED & CANNED SOFT DRINKS	0.00358
94	ANIMAL & MARINE FATS & OILS	0.00015
95	ROASTED COFFEE	0.00116
99	FOOD PREPARATIONS, N.E.C.	0.02999
104	BROADWOVEN FABRIC PLANTS	0.00141
108	FLOOR COVERINGS	0.00305
111	TEXTILE GOODS N.E.C.	0.00403
114	APPAREL FROM PURCHASED MATERIAL	0.03726
115	HOUSE FURNISHINGS	0.00117
116	FABRIC TEXTILE PRODUCTS, N.E.C	0.00661
118	SAWMILLS & PLANING MILLS, GEN	0.00056
121	MILLWORK	0.00009
123	VENEER & PLYWOOD	0.00036
130	WOODEN CONTAINERS	0.08784
131	WOOD HOUSEHOLD FURNITURE	0.01406
136	MATTRESSES & BEDSPRINGS	0.00057
137	WOOD OFFICE FURNITURE	0.03201
143	FURNITURE & FIXTURES, N.E.C.	0.00996
147	ENVELOPES	0.03912
149	BLDING PAPER & BOARD MILLS	0.00133
151	BAGS, EXC. TEXTILE BAGS	0.00166
154	STATIONARY & MISC. PAPER	0.02074
155	PAPERBOARD CONTAINERS & BOXES	0.00460
156	NEWSPAPER	0.01482
157	PERIODICALS	0.00270
158	BOOK PUBLISHING	0.00601
160	MISC. PUBLISHING	0.15754
161	COMMERCIAL PRINTING	0.09569
162	MANIFOLD BUSINESS FORMS	0.00635
168	INORGANIC & ORGANIC CHEMICALS	5.37862
173	ADHESIVES & SEALANTS	0.00182
174	EXPLOSIVES	0.00228
177	CHEM. PREPARATIONS, N.E.C.	0.00634

DRI CODE	INDUSTRY	VECTOR
178	PLASTIC MATERIALS & RESINS	0.00008
182	DRUGS	0.00394
183	SOAP & OTHER DETERGENTS	0.00176
186	TOILET PREPARATIONS	0.00238
187	PAINTS & ALLIED PRODUCTS	0.00435
188	PETROL. REFINING & REL. PROD.	8.72597
189	LUB OILS & GREASES	0.00199
190	PROD OF PETR & COAL NEC	0.00198
193	TIRES & INNER TUBES	0.00719
196	FABRICATED RUBBER PROD., N.E.C	0.02065
197	MISC. PLASTIC PRODUCTS	0.01191
198	HOSE & BELTING	0.00334
200	FOOTWEAR, CUT STOCK	0.00018
203	LUGGAGE	0.00005
205	GLASS & PROD., EXC. CONTAINERS	0.00019
206	GLASS CONTAINERS	0.00008
208	STRUCTURAL CLAY PRODUCTS	0.00054
209	KITCHEN POTTERY	0.00019
211	CONCRETE BLOCK & BRICK	0.00026
212	CONCRETE PRODUCTS, N.E.C.	0.00011
217	ABRASIVE PRODUCTS	0.00282
218	ASBESTOS PROD. & SEALING DEV.	0.00822
222	NONMETALLIC MIN. PROD., N.E.C.	0.00245
223	BLAST FURNACES & STEEL MILLS	0.01282
224	ELECTROMETALLURGICAL PRODUCTS	0.00009
225	STEEL WIRE & RELATED PRODUCTS	0.00402
227	STEEL PIPES & TUBES	0.00063
231	PRIMARY METAL PRODUCTS, N.E.C.	0.00190
236	PRIM. NONFERROUS METALS, N.E.C	0.00117
240	NONFER. ROLL. & DRAW., N.E.C.	0.00655
241	NONF.WIRE DRAW. & INSULATING	0.00006
243	BRASS, BRONZE & COPPER CASTING	0.26680
246	METAL CANS	0.00020
247	METAL BARRELS, DRUMS & PAILS	0.00012
248	METAL SANITARY WARE	0.00249
249	PLUMBING FITTINGS & TRIM	0.00083
250	HEATING EQUIP, EXC. ELECTRICAL	0.00086
251	FABRICATED STRUCTURAL METAL	0.00490
253	FABRIC. PLATE WORK (BOILERSHOP	1.06487
254	SHEET METAL WORK	0.00086
255	ARCHITECTURAL METAL WORK	0.00276
256	MISC. METAL WORK	0.04852
257	SCREW MACHINE PRODUCTS	0.01105
259	OTHER METAL STAMPINGS	0.00039
260	CUTLERY	0.00011
261	HAND & EDGE TOOLS, N.E.C.	0.00925

DRI CODE	INDUSTRY	VECTOR
263	HARDWARE, N.E.C.	0.36173
266	MISC. FABRICATED WIRE PRODUCTS	0.00510
267	STEEL SPRINGS	0.00006
268	PIPE VALVES & PIPE FITTINGS	0.08503
270	FABR. METAL PRODUCTS, N.E.C.	0.03484
271	STEAM ENGINES & TURBINES	0.13732
272	INTERNAL COMB. ENGINES, N.E.C.	0.22118
273	FARM MACHINERY	0.00036
274	LAWN & GARDEN EQUIPMENT	0.00044
275	CONSTRUCTION MACHINERY	0.01625
276	MINING MACH., EXC. OIL	0.00472
278	ELEVATORS & MOVING STAIRWAYS	0.00024
279	CONVEYORS & CONVEYING EQUIP.	0.00165
280	HOISTS, CRANES & MONORAILS	0.04675
281	INDUSTRIAL TRUCKS & TRACTORS	0.17218
282	MACHINE TOOLS, METAL CUTTING	0.05266
283	MACHINE TOOLS, METAL FORMING	0.01211
284	SPECIAL DIES, TOOLS, ACCESS.	0.00394
285	POWER DRIVEN HAND TOOLS	0.00181
287	METALWORKING MACHINERY, N.E.C.	0.01092
288	FOOD PRODUCTS MACHINERY	0.00003
289	TEXTILE MACHINERY	0.00040
290	WOODWORKING MACHINERY	0.00121
291	PAPER INDUSTRIES MACHINERY	0.00023
292	PRINTING TRADES MACHINERY	0.01881
293	SP. INDUSTRY MACHINERY, N.E.C.	0.03077
294	PUMPS & COMPRESSORS	0.05088
295	BALL & ROLLER BEARINGS	0.02224
296	BLOWERS & FANS	0.02901
298	POWER TRANSMISSION EQUIPMENT	0.03425
299	INDUSTRIAL FURNACES & OVENS	0.00456
300	GEN. INDUSTRIAL MACH., N.E.C.	0.04765
303	ELECTRONIC COMPUTING EQUIP.	0.95494
304	CALCULATING & ACCOUNTING MACH.	0.00199
306	OFFICE MACHINES, N.E.C.	0.01957
308	COMMERCIAL LAUNDRY EQUIPMENT	0.00342
309	REFRIG. & HEATING EQUIPMENT	0.02605
311	SERVICE INDUSTRY MACH., N.E.C.	0.01781
312	ELECTRIC MEASURING INSTRUMENTS	0.20805
313	TRANSFORMERS	0.00147
314	SWITCHGEAR & SWITCHBOARDS	0.01740
315	MOTORS & GENERATORS	0.13584
316	INDUSTRIAL CONTROLS	0.01858
317	WELDING APPARATUS	0.00277
318	CARBON & GRAPHITE PRODUCTS	0.00016
319	ELECTRIC INDUSTR. APPAR, N.E.C	0.04145

DRI CODE	INDUSTRY	VECTOR
320	HOUSEHOLD COOKING EQUIP.	0.00182
325	SEWING MACHINES	0.00008
326	HOUSEHOLD APPL., N.E.C.	0.00174
327	ELECTRIC LAMPS	0.00347
329	WIRING DEVICES	0.11666
330	RADIO & TV RECEIVING SETS	0.06326
331	PHONOGRAPH RECORDS & TAPE	0.00001
332	TELEPHONE & TELEGRAPH EQUIP.	0.03347
333	RADIO & TV COMM. EQUIPMENT	7.23558
334	ELECTRON TUBES	0.06168
335	SEMICONDUCTORS	0.02025
336	ELECTRONIC CAPACITORS	0.00016
337	RESISTORS, FOR ELEC. APPLIC.	0.00153
338	ELEC. COILS, TRANSFORMERS, ETC	0.00166
340	ELECTRONIC COMPONENTS, N.E.C.	0.95873
341	STORAGE BATTERIES	0.00618
342	PRIMARY BATTERIES, DRY & WET	0.03105
343	X-RAY APPRATUS & TUBES	0.00289
345	ELECTRICAL EQUIP., N.E.C.	0.00537
347	TRUCK TRAILERS	0.00700
348	MOTOR VEHICLES-AUTOS	0.00102
349	MOTOR VEHICLES-OTHER	0.00999
350	MOTOR VEHICLE PARTS & ACCESS.	0.01487
351	AIRCRAFT	7.90945
352	AIRCRAFT ENG. & ENG. PARTS	1.08562
353	AIRCRAFT PARTS & EQUIP., N.E.C	1.98724
354	SHIPBUILDING & REPAIRING	11.61963
355	BOATBUILDING & REPAIRING	0.06321
356	RAILROAD EQUIPMENT	0.00177
357	MOTORCYCLES, BICYCLES & PARTS	0.00027
359	MOBILE HOMES	0.01115
361	ENGINEERING & SCIENTIFIC INST.	0.37749
362	MEASURING & CONTROL INSTRUMENT	0.04416
363	SURGICAL & MEDICAL INSTRUMENTS	0.29461
364	SURGICAL APPLIANCES & SUPPLIES	0.00608
365	DENTAL EQUIP. & SUPPLIES	0.00131
367	OPTICAL INSTR. & LENSES	0.07357
369	PHOTOGRAPHIC EQ. & SUPPLIES	0.01983
374	MUSICL INSTRUMENTS & PARTS	0.00004
375	TOYS AND SPORTING GOODS	0.00176
376	OFFICE & ARTISTS' MATERIALS	0.02471
378	BROOMS, BRUSH, HD SURF FLR. COV.	0.00046
379	MISC. MFGING, DURABLE GOODS.	0.08445
380	RAILROADS & RAIL-RELATED SERV.	0.01704
381	PASSENGER TRANSPORTATION, N.E.C	0.05173
382	MOTOR FREIGHT	0.07680

DRI CODE	INDUSTRY	VECTOR
383	WATER TRANS. & REL. SERVICES	1.21450
384	AIR CARRIERS & REL. SERVICES	0.71623
386	TRANSPORTION SERVICES, N.E.C.	0.04013
387	COMMUNICATIONS, EX. RADIO & TV	0.97892
389	ELECTRIC UTILITIES	1.18993
390	GAS UTILITIES	0.12802
391	WATER & SEWER SERVICES	0.12975
398	REAL ESTATE	0.40185
399	HOTELS & LODGING PLACES	0.33409
403	COMPUTER & DATA PROCESSING	1.05598
404	MGMT & COUSULTING, LABS	19.71198
405	EQUIP. RENTAL & LEASING	0.13798
406	MISC. BUSINESS SERVICES	3.09138
411	OTHER	0.01922
412	LEGAL SERVICES	0.00192
413	ENG., ARCHIT., SURVEYING	1.96847
414	ACCTING.AUDITING & MISC. PROJ.	0.00479
415	EATING & DRINKING PLACES	0.18653
416	AUTO RENTAL & LEASING (W/ODR.)	0.02474
419	AMUSEMENT & RECREATION SERVICE	0.00006
420	DOCTORS & DENTISTS	0.01799
422	NURSING&PERSONAL CARE	0.00105
423	OTHER MEDICAL & HEALTH SERVICE	0.00362
424	EDUCATIONAL SERVICES	0.37909
426	SOCIAL SERVICES, N.E.C.	0.00767
427	U.S. POSTAL SERVICE	0.23614
428	OTHER FED. GOV'T ENTERPRISES	0.06914
432	FEDERAL EMPLOYEE	5.94168

APPENDIX I.
O&M VECTORS FOR MARINE CORPS (RESERVE)

DRI CODE	INDUSTRY	VECTOR
50	COMPLETE GUIDED MISSILES	6.15291
51	AMMO, EXCEPT SMALL ARMS, N.E.C	0.60379
52	TANKS & TANK COMPONENTS	0.00317
53	SMALL ARMS	0.75012
54	SMALL ARMS AMMUNITION	0.04730
55	OTHER ORDNANCE & ACCESSORIES	0.97612
63	ICE CREAM & FROZEN DESSERTS	0.00652
64	FLUID MILK	0.00012
69	PICKLES, SAUCES & SALAD DRESS.	0.00145
70	FRESH OR FROZEN PACKAGED FISH	0.00263
71	FROZEN FRUITS & VEGETABLES	0.00194
74	BLENDED & PREPARED FLOUR	0.00497
81	SUGAR	0.00037
89	BOTTLED & CANNED SOFT DRINKS	0.00289
94	ANIMAL & MARINE FATS & OILS	0.00012
95	ROASTED COFFEE	0.00094
99	FOOD PREPARATIONS, N.E.C.	0.02419
104	BROADWOVEN FABRIC PLANTS	0.00113
108	FLOOR COVERINGS	0.00246
111	TEXTILE GOODS N.E.C.	0.00325
114	APPAREL FROM PURCHASED MATERIAL	0.03006
115	HOUSE FURNISHINGS	0.00094
116	FABRIC TEXTILE PRODUCTS, N.E.C	0.00533
118	SAWMILLS & PLANING MILLS, GEN	0.00046
121	MILLWORK	0.00008
123	VENEER & PLYWOOD	0.00029
130	WOODEN CONTAINERS	0.07085
131	WOOD HOUSEHOLD FURNITURE	0.01134
136	MATTRESSES & BEDSPRINGS	0.00046
137	WOOD OFFICE FURNITURE	0.02582
143	FURNITURE & FIXTURES, N.E.C.	0.00803
147	ENVELOPES	0.03531
149	BLDING PAPER & BOARD MILLS	0.00107
151	BAGS, EXC. TEXTILE BAGS	0.00134
154	STATIONARY & MISC. PAPER	0.01872
155	PAPERBOARD CONTAINERS & BOXES	0.00371
156	NEWSPAPER	0.01324
157	PERIODICALS	0.00243
158	BOOK PUBLISHING	0.00485
160	MISC. PUBLISHING	0.12707
161	COMMERCIAL PRINTING	0.49805
162	MANIFOLD BUSINESS FORMS	0.00512
168	INORGANIC & ORGANIC CHEMICALS	4.85285
173	ADHESIVES & SEALANTS	0.00146
174	EXPLOSIVES	0.00184
177	CHEM. PREPARATIONS, N.E.C.	0.00511

DRI CODE	INDUSTRY	VECTOR
178	PLASTIC MATERIALS & RESINS	0.00007
182	DRUGS	0.00318
183	SOAP & OTHER DETERGENTS	0.00142
186	TOILET PREPARATIONS	0.00192
187	PAINTS & ALLIED PRODUCTS	0.00351
188	PETROL. REFINING & REL. PROD.	1.61178
189	LUB OILS & GREASES	0.00161
190	PROD OF PETR & COAL NEC	0.00159
193	TIRES & INNER TUBES	0.00580
196	FABRICATED RUBBER PROD., N.E.C	0.01666
197	MISC. PLASTIC PRODUCTS	0.00960
198	HOSE & BELTING	0.00270
200	FOOTWEAR, CUT STOCK	0.00014
203	LUGGAGE	0.00004
205	GLASS & PROD., EXC. CONTAINERS	0.00015
206	GLASS CONTAINERS	0.00006
208	STRUCTURAL CLAY PRODUCTS	0.00044
209	KITCHEN POTTERY	0.00015
211	CONCRETE BLOCK & BRICK	0.00021
212	CONCRETE PRODUCTS, N.E.C.	0.00009
217	ABRASIVE PRODUCTS	0.00227
218	ASBESTOS PROD. & SEALING DEV.	0.00663
222	NONMETALLIC MIN. PROD., N.E.C.	0.00198
223	BLAST FURNACES & STEEL MILLS	0.01034
224	ELECTROMETALLURGICAL PRODUCTS	0.00007
225	STEEL WIRE & RELATED PRODUCTS	0.00324
227	STEEL PIPES & TUBES	0.00051
231	PRIMARY METAL PRODUCTS, N.E.C.	0.00153
236	PRIM. NONFERROUS METALS, N.E.C	0.00094
240	NONFER. ROLL. & DRAW., N.E.C.	0.00528
241	NONF.WIRE DRAW. & INSULATING	0.00005
243	BRASS, BRONZE & COPPER CASTING	0.21520
246	METAL CANS	0.00016
247	METAL BARRELS, DRUMS & PAILS	0.00009
248	METAL SANITARY WARE	0.00201
249	PLUMBING FITTINGS & TRIM	0.00067
250	HEATING EQUIP, EXC. ELECTRICAL	0.00070
251	FABRICATED STRUCTURAL METAL	0.00395
253	FABRIC. PLATE WORK (BOILERSHOP	0.85890
254	SHEET METAL WORK	0.00069
255	ARCHITECTURAL METAL WORK	0.00223
256	MISC. METAL WORK	0.03914
257	SCREW MACHINE PRODUCTS	0.00891
259	OTHER METAL STAMPINGS	0.00032
260	CUTLERY	0.00009
261	HAND & EDGE TOOLS, N.E.C.	0.00746

DRI CODE	INDUSTRY	VECTOR
263	HARDWARE, N.E.C.	0.29176
266	MISC. FABRICATED WIRE PRODUCTS	0.00411
267	STEEL SPRINGS	0.00005
268	PIPE VALVES & PIPE FITTINGS	0.06858
270	FABR. METAL PRODUCTS, N.E.C.	0.02810
271	STEAM ENGINES & TURBINES	0.11076
272	INTERNAL COMB. ENGINES, N.E.C.	0.17840
273	FARM MACHINERY	0.00029
274	LAWN & GARDEN EQUIPMENT	0.00036
275	CONSTRUCTION MACHINERY	0.01311
276	MINING MACH., EXC. OIL	0.00381
278	ELEVATORS & MOVING STAIRWAYS	0.00019
279	CONVEYORS & CONVEYING EQUIP.	0.00133
280	HOISTS, CRANES & MONORAILS	0.03771
281	INDUSTRIAL TRUCKS & TRACTORS	0.13888
282	MACHINE TOOLS, METAL CUTTING	0.04247
283	MACHINE TOOLS, METAL FORMING	0.00976
284	SPECIAL DIES, TOOLS, ACCESS.	0.00317
285	POWER DRIVEN HAND TOOLS	0.00146
287	METALWORKING MACHINERY, N.E.C.	0.00881
288	FOOD PRODUCTS MACHINERY	0.00002
289	TEXTILE MACHINERY	0.00032
290	WOODWORKING MACHINERY	0.00098
291	PAPER INDUSTRIES MACHINERY	0.00019
292	PRINTING TRADES MACHINERY	0.01517
293	SP. INDUSTRY MACHINERY, N.E.C.	0.02482
294	PUMPS & COMPRESSORS	0.04104
295	BALL & ROLLER BEARINGS	0.01794
296	BLOWERS & FANS	0.02340
298	POWER TRANSMISSION EQUIPMENT	0.02763
299	INDUSTRIAL FURNACES & OVENS	0.00368
300	GEN. INDUSTRIAL MACH., N.E.C.	0.03843
303	ELECTRONIC COMPUTING EQUIP.	0.77023
304	CALCULATING & ACCOUNTING MACH.	0.00161
306	OFFICE MACHINES, N.E.C.	0.01579
308	COMMERCIAL LAUNDRY EQUIPMENT	0.00276
309	REFRIG. & HEATING EQUIPMENT	0.02101
311	SERVICE INDUSTRY MACH., N.E.C.	0.01436
312	ELECTRIC MEASURING INSTRUMENTS	0.16781
313	TRANSFORMERS	0.00119
314	SWITCHGEAR & SWITCHBORADS	0.01403
315	MOTORS & GENERATORS	0.10956
316	INDUSTRIAL CONTROLS	0.01499
317	WELDING APPARATUS	0.00223
318	CARBON & GRAPHITE PRODUCTS	0.00013
319	ELECTRIC INDUSTR. APPAR, N.E.C	0.03343

DRI CODE	INDUSTRY	VECTOR
320	HOUSEHOLD COOKING EQUIP.	0.00147
325	SEWING MACHINES	0.00006
326	HOUSEHOLD APPL., N.E.C.	0.00140
327	ELECTRIC LAMPS	0.00280
329	WIRING DEVICES	0.09409
330	RADIO & TV RECEIVING SETS	0.05102
331	PHONGRAPH RECORDS & TAPE	0.00001
332	TELEPHONE & TELEGRAPH EQUIP.	0.02700
333	RADIO & TV COMM. EQUIPMENT	5.83605
334	ELECTRON TUBES	0.04975
335	SEMICONDUCTORS	0.01634
336	ELECTRONIC CAPACITORS	0.00013
337	RESISTORS, FOR ELEC. APPLIC.	0.00123
338	ELEC. COILS, TRANSFORMERS, ETC	0.00134
340	ELECTRONIC COMPONENTS, N.E.C.	0.77329
341	STORAGE BATTERIES	0.00499
342	PRIMARY BATTERIES, DRY & WET	0.02505
343	X-RAY APPRATUS & TUBES	0.00233
345	ELECTRICAL EQUIP., N.E.C.	0.00433
347	TRUCK TRAILERS	0.00565
348	MOTOR VEHICLES-AUTOS	0.00082
349	MOTOR VEHICLES-OTHER	0.00806
350	MOTOR VEHICLE PARTS & ACCESS.	0.01199
351	AIRCRAFT	6.37958
352	AIRCRAFT ENG. & ENG. PARTS	0.87563
353	AIRCRAFT PARTS & EQUIP., N.E.C	1.60286
354	SHIPBUILDING & REPAIRING	9.37213
355	BOATBUILDING & REPAIRING	0.05098
356	RAILROAD EQUIPMENT	0.00143
357	MOTORCYCLES, BICYCLES & PARTS	0.00022
359	MOBILE HOMES	0.00900
361	ENGINEERING & SCIENTIFIC INST.	0.30447
362	MEASURING & CONTROL INSTRUMENT	0.03562
363	SURGICAL & MEDICAL INSTRUMENTS	0.26480
364	SURGICAL APPLIANCES & SUPPLIES	0.00491
365	DENTAL EQUIP. & SUPPLIES	0.00106
367	OPTICAL INSTR. & LENSES	0.05934
369	PHOTOGRAPHIC EQ. & SUPPLIES	0.01599
374	MUSICL INSTRUMENTS & PARTS	0.00003
375	TOYS AND SPORTING GOODS	0.00142
376	OFFICE & ARTISTS' MATERIALS	0.02219
378	BROOMS, BRUSH, HD SURF FLR. COV.	0.00037
379	MISC. MFGING, DURABLE GOODS.	0.06812
380	RAILROADS & RAIL-RELATED SERV.	0.68903
381	PASSENGER TRANSPORTATION, N.E.C	0.24439
382	MOTOR FREIGHT	2.85177

DRI CODE	INDUSTRY	VECTOR
383	WATER TRANS. & REL. SERVICES	0.97959
384	AIR CARRIERS & REL. SERVICES	3.85016
386	TRANSPORTION SERVICES, N.E.C.	0.03237
387	COMMUNICATIONS, EX. RADIO & TV	3.21765
389	ELECTRIC UTILITIES	3.90745
390	GAS UTILITIES	0.42079
391	WATER & SEWER SERVICES	0.42648
398	REAL ESTATE	1.32088
399	HOTELS & LODGING PLACES	1.81396
403	COMPUTER & DATA PROCESSING	0.85173
404	MGMT & COUSULTING, LABS	17.78956
405	EQUIP. RENTAL & LEASING	0.11130
406	MISC. BUSINESS SERVICES	2.49344
411	OTHER	0.01550
412	LEGAL SERVICES	0.00154
413	ENG., ARCHIT., SURVEYING	1.58772
414	ACCTING.AUDITING & MISC. PROJ.	0.00386
415	EATING & DRINKING PLACES	1.02328
416	AUTO RENTAL & LEASING (W/ODR.)	0.13574
419	AMUSEMENT & RECREATION SERVICE	0.00005
420	DOCTORS & DENTISTS	0.01451
422	NURSING&PERSONAL CARE	0.00084
423	OTHER MEDICAL & HEALTH SERVICE	0.00292
424	EDUCATIONAL SERVICES	0.30576
426	SOCIAL SERVICES, N.E.C.	0.00619
427	U.S. POSTAL SERVICE	0.77620
428	OTHER FED. GOV'T ENTERPRISES	0.05868
432	FEDERAL EMPLOYEE	9.62472

APPENDIX J.
O&M VECTORS FOR AIR FORCE (RESERVE)

DRI CODE	INDUSTRY	VECTOR
50	COMPLETE GUIDED MISSILES	6.00547
51	AMMO, EXCEPT SMALL ARMS, N.E.C	0.08377
52	TANKS & TANK COMPONENTS	0.00026
53	SMALL ARMS	0.27109
54	SMALL ARMS AMMUNITION	0.02572
55	OTHER ORDNANCE & ACCESSORIES	0.03781
63	ICE CREAM & FROZEN DESSERTS	0.00078
64	FLUID MILK	0.00037
69	PICKLES, SAUCES & SALAD DRESS.	0.00013
70	FRESH OR FROZEN PACKAGED FISH	0.01316
71	FROZEN FRUITS & VEGETABLES	0.00083
74	BLENDED & PREPARED FLOUR	0.00074
81	SUGAR	0.00024
89	BOTTLED & CANNED SOFT DRINKS	0.00152
94	ANIMAL & MARINE FATS & OILS	0.00011
95	ROASTED COFFEE	0.00295
99	FOOD PREPARATIONS, N.E.C.	0.00745
104	BROADWOVEN FABRIC PLANTS	0.00023
108	FLOOR COVERINGS	0.00468
111	TEXTILE GOODS N.E.C.	0.00245
112	HOSIERY & KNIT GOODS	0.00030
114	APPAREL FROM PURCHASED MATERIAL	0.00956
115	HOUSE FURNISHINGS	0.00176
116	FABRIC TEXTILE PRODUCTS, N.E.C	0.02365
118	SAWMILLS & PLANING MILLS, GEN	0.00031
130	WOODEN CONTAINERS	0.00761
131	WOOD HOUSEHOLD FURNITURE	0.01454
136	MATTRESSES & BEDSPRINGS	0.00157
137	WOOD OFFICE FURNITURE	0.03224
143	FURNITURE & FIXTURES, N.E.C.	0.01151
145	PAPER MILLS, EX. BLDING PAPER	0.00007
149	BLDING PAPER & BOARD MILLS	0.00030
151	BAGS, EXC. TEXTILE BAGS	0.00012
155	PAPERBOARD CONTAINERS & BOXES	0.00051
156	NEWSPAPER	0.00222
158	BOOK PUBLISHING	0.00269
160	MISC. PUBLISHING	0.00360
161	COMMERCIAL PRINTING	0.07786
162	MANIFOLD BUSINESS FORMS	0.00494
168	INORGANIC & ORGANIC CHEMICALS	0.00192
171	AG CHEMICALS, N.E.C.	0.00011
173	ADHESIVES & SEALANTS	0.00018
177	CHEM. PREPARATIONS, N.E.C.	0.04812
178	PLASTIC MATERIALS & RESINS	0.00008
182	DRUGS	0.00052
183	SOAP & OTHER DETERGENTS	0.00095

DRI CODE	INDUSTRY	VECTOR
184	POLISHES & SANITATION GOODS	0.00011
186	TOILET PREPARATIONS	0.00026
187	PAINTS & ALLIED PRODUCTS	0.00043
188	PETROL. REFINING & REL. PROD.	11.47780
189	LUB OILS & GREASES	0.00019
190	PROD OF PETR & COAL NEC	0.00036
193	TIRES & INNER TUBES	0.02121
196	FABRICATED RUBBER PROD., N.E.C	0.00285
197	MISC. PLASTIC PRODUCTS	0.00055
198	HOSE & BELTING	0.00238
200	FOOTWEAR, CUT STOCK	0.00059
203	LUGGAGE	0.00010
204	LEATHER GOODS, N.E.C.	0.00010
209	KITCHEN POTTERY	0.00014
211	CONCRETE BLOCK & BRICK	0.00026
217	ABRASIVE PRODUCTS	0.00041
218	ASBESTOS PROD. & SEALING DEV.	0.00646
222	NONMETALLIC MIN. PROD., N.E.C.	0.00003
223	BLAST FURNACES & STEEL MILLS	0.00012
225	STEEL WIRE & RELATED PRODUCTS	0.00204
240	NONFER. ROLL. & DRAW., N.E.C.	0.00014
243	BRASS, BRONZE & COPPER CASTING	0.00009
246	METAL CANS	0.00034
247	METAL BARRELS, DRUMS & PAILS	0.00254
248	METAL SANITARY WARE	0.00129
249	PLUMBING FITTINGS & TRIM	0.00567
250	HEATING EQUIP, EXC. ELECTRICAL	0.00132
251	FABRICATED STRUCTURAL METAL	0.00348
253	FABRIC. PLATE WORK (BOILERSHOP	0.00275
254	SHEET METAL WORK	0.00034
255	ARCHITECTURAL METAL WORK	0.00105
256	MISC. METAL WORK	0.02426
257	SCREW MACHINE PRODUCTS	0.01051
259	OTHER METAL STAMPINGS	0.00092
260	CUTLERY	0.00198
261	HAND & EDGE TOOLS, N.E.C.	0.00187
263	HARDWARE, N.E.C.	0.00136
266	MISC. FABRICATED WIRE PRODUCTS	0.00026
267	STEEL SPRINGS	0.00062
268	PIPE VALVES & PIPE FITTINGS	0.02882
270	FABR. METAL PRODUCTS, N.E.C.	0.01155
271	STEAM ENGINES & TURBINES	0.19631
272	INTERNAL COMB. ENGINES, N.E.C.	0.00498
273	FARM MACHINERY	0.00012
274	LAWN & GARDEN EQUIPMENT	0.00062
275	CONSTRUCTION MACHINERY	0.00493

DRI CODE	INDUSTRY	VECTOR
276	MINING MACH., EXC. OIL	0.00100
279	CONVEYORS & CONVEYING EQUIP.	0.00908
280	HOISTS, CRANES & MONORAILS	0.00099
281	INDUSTRIAL TRUCKS & TRACTORS	0.15055
282	MACHINE TOOLS, METAL CUTTING	0.01579
283	MACHINE TOOLS, METAL FORMING	0.00407
284	SPECIAL DIES, TOOLS, ACCESS.	0.00516
285	POWER DRIVEN HAND TOOLS	0.00063
286	ROLLING MILL MACHINERY	0.00004
287	METALWORKING MACHINERY, N.E.C.	0.00069
288	FOOD PRODUCTS MACHINERY	0.00007
289	TEXTILE MACHINERY	0.01510
290	WOODWORKING MACHINERY	0.00014
291	PAPER INDUSTRIES MACHINERY	0.00024
292	PRINTING TRADES MACHINERY	0.00532
293	SP. INDUSTRY MACHINERY, N.E.C.	0.00427
294	PUMPS & COMPRESSORS	0.03183
295	BALL & ROLLER BEARINGS	0.01445
296	BLOWERS & FANS	0.00155
298	POWER TRANSMISSION EQUIPMENT	0.01879
299	INDUSTRIAL FURNACES & OVENS	0.00444
300	GEN. INDUSTRIAL MACH., N.E.C.	0.07647
303	ELECTRONIC COMPUTING EQUIP.	0.93434
304	CALCULATING & ACCOUNTING MACH.	0.00621
306	OFFICE MACHINES, N.E.C.	0.02120
308	COMMERCIAL LAUNDRY EQUIPMENT	0.00350
309	REFRIG. & HEATING EQUIPMENT	0.00970
311	SERVICE INDUSTRY MACH., N.E.C.	0.00650
312	ELECTRIC MEASURING INSTRUMENTS	0.18724
313	TRANSFORMERS	0.00037
314	SWITCHGEAR & SWITCHBORADS	0.00517
315	MOTORS & GENERATORS	0.10214
316	INDUSTRIAL CONTROLS	0.02100
317	WELDING APPARATUS	0.00037
318	CARBON & GRAPHITE PRODUCTS	0.00007
319	ELECTRIC INDUSTR. APPAR, N.E.C	0.00890
320	HOUSEHOLD COOKING EQUIP.	0.00084
326	HOUSEHOLD APPL., N.E.C.	0.00866
327	ELECTRIC LAMPS	0.00058
329	WIRING DEVICES	0.01420
330	RADIO & TV RECEIVING SETS	0.01088
331	PHONOGRAPH RECORDS & TAPE	0.00038
332	TELEPHONE & TELEGRAPH EQUIP.	0.05422
333	RADIO & TV COMM. EQUIPMENT	4.30750
334	ELECTRON TUBES	0.02306
335	SEMICONDUCTORS	0.01977

DRI CODE	INDUSTRY	VECTOR
336	ELECTRONIC CAPACITORS	0.00012
337	RESISTORS, FOR ELEC. APPLIC.	0.00319
338	ELEC. COILS, TRANSFORMERS, ETC	0.00299
340	ELECTRONIC COMPONENTS, N.E.C.	0.28971
341	STORAGE BATTERIES	0.00555
342	PRIMARY BATTERIES, DRY & WET	0.00313
343	X-RAY APPRATUS & TUBES	0.00181
345	ELECTRICAL EQUIP., N.E.C.	0.00074
347	TRUCK TRAILERS	0.00420
348	MOTOR VEHICLES-AUTOS	0.00026
349	MOTOR VEHICLES-OTHER	0.02494
350	MOTOR VEHICLE PARTS & ACCESS.	0.02131
351	AIRCRAFT	6.26033
352	AIRCRAFT ENG. & ENG. PARTS	2.53933
353	AIRCRAFT PARTS & EQUIP., N.E.C	2.20736
354	SHIPBUILDING & REPAIRING	0.02020
355	BOATBUILDING & REPAIRING	0.00012
356	RAILROAD EQUIPMENT	0.00040
357	MOTORCYCLES, BICYCLES & PARTS	0.00033
361	ENGINEERING & SCIENTIFIC INST.	7.32815
362	MEASURING & CONTROL INSTRUMENT	2.69246
363	SURGICAL & MEDICAL INSTRUMENTS	0.03139
364	SURGICAL APPLIANCES & SUPPLIES	0.00087
365	DENTAL EQUIP. & SUPPLIES	0.00222
367	OPTICAL INSTR. & LENSES	0.01149
369	PHOTOGRAPHIC EQ. & SUPPLIES	0.02258
374	MUSICL INSTRUMENTS & PARTS	0.00009
375	TOYS AND SPORTING GOODS	0.00156
376	OFFICE & ARTISTS' MATERIALS	0.00027
379	MISC. MFGING, DURABLE GOODS.	1.84964
380	RAILROADS & RAIL-RELATED SERV.	0.07677
381	PASSENGER TRANSPORTATION, N.E.C	0.04195
382	MOTOR FREIGHT	0.32645
383	WATER TRANS. & REL. SERVICES	0.00010
384	AIR CARRIERS & REL. SERVICES	1.07737
386	TRANSPORTION SERVICES, N.E.C.	0.01232
387	COMMUNICATIONS, EX. RADIO & TV	0.49296
389	ELECTRIC UTILITIES	0.99975
390	GAS UTILITIES	0.15228
391	WATER & SEWER SERVICES	0.10884
398	REAL ESTATE	0.19103
399	HOTELS & LODGING PLACES	0.27313
403	COMPUTER & DATA PROCESSING	0.86799
405	EQUIP. RENTAL & LEASING	0.07126
406	MISC. BUSINESS SERVICES	3.85728
411	OTHER	0.01067

DRI CODE	INDUSTRY	VECTOR
412	LEGAL SERVICES	0.00027
413	ENG., ARCHIT., SURVEYING	0.17573
414	ACCTING.AUDITING & MISC. PROJ.	0.00326
415	EATING & DRINKING PLACES	0.15387
416	AUTO RENTAL & LEASING (W/ODR.)	0.02040
419	AMUSEMENT & RECREATION SERVICE	0.00003
420	DOCTORS & DENTISTS	0.00646
422	NURSING&PERSONAL CARE	0.00157
423	OTHER MEDICAL & HEALTH SERVICE	0.01165
424	EDUCATIONAL SERVICES	0.09730
426	SOCIAL SERVICES, N.E.C.	0.00009
427	U.S. POSTAL SERVICE	0.11216
428	OTHER FED. GOV'T ENTERPRISES	0.11143
432	FEDERAL EMPLOYEE	42.77994

APPENDIX K.
O&M VECTORS FOR ARMY (NATIONAL GUARD)

DRI CODE	INDUSTRY	VECTOR
50	COMPLETE GUIDED MISSILES	2.62746
51	AMMO, EXCEPT SMALL ARMS, N.E.C	2.65849
52	TANKS & TANK COMPONENTS	7.55318
53	SMALL ARMS	0.27347
54	SMALL ARMS AMMUNITION	0.14000
55	OTHER ORDNANCE & ACCESSORIES	0.21107
63	ICE CREAM & FROZEN DESSERTS	0.01915
64	FLUID MILK	0.02995
69	PICKLES, SAUCES & SALAD DRESS.	0.00008
70	FRESH OR FROZEN PACKAGED FISH	0.00240
71	FROZEN FRUITS & VEGETABLES	0.00003
74	BLENDED & PREPARED FLOUR	0.00369
89	BOTTLED & CANNED SOFT DRINKS	0.00088
99	FOOD PREPARATIONS, N.E.C.	0.05299
104	BROADWOVEN FABRIC PLANTS	0.00296
108	FLOOR COVERINGS	0.00160
111	TEXTILE GOODS N.E.C.	0.01027
112	HOSIERY & KNIT GOODS	1.58694
114	APPAREL FROM PURCHASED MATERIAL	0.00530
115	HOUSE FURNISHINGS	0.00059
116	FABRIC TEXTILE PRODUCTS, N.E.C	0.02092
118	SAWMILLS & PLANING MILLS, GEN	0.00221
123	VENEER & PLYWOOD	0.00017
130	WOODEN CONTAINERS	0.02117
131	WOOD HOUSEHOLD FURNITURE	0.00804
136	MATTRESSES & BEDSPRINGS	0.00062
137	WOOD OFFICE FURNITURE	0.03146
143	FURNITURE & FIXTURES, N.E.C.	0.02631
145	PAPER MILLS, EX. BLDING PAPER	0.00137
149	BLDING PAPER & BOARD MILLS	0.00065
151	BAGS, EXC. TEXTILE BAGS	0.00018
155	PAPERBOARD CONTAINERS & BOXES	0.00142
156	NEWSPAPER	0.00108
158	BOOK PUBLISHING	0.00415
160	MISC. PUBLISHING	0.00382
161	COMMERCIAL PRINTING	0.43413
162	MANIFOLD BUSINESS FORMS	0.00481
168	INORGANIC & ORGANIC CHEMICALS	0.00969
171	AG CHEMICALS, N.E.C.	0.00016
173	ADHESIVES & SEALANTS	0.00009
174	EXPLOSIVES	0.03686
177	CHEM. PREPARATIONS, N.E.C.	0.01779
182	DRUGS	0.00654
183	SOAP & OTHER DETERGENTS	0.00008
184	POLISHES & SANITATION GOODS	0.00112
187	PAINTS & ALLIED PRODUCTS	0.00035

DRI CODE	INDUSTRY	VECTOR
188	PETROL. REFINING & REL. PROD.	2.68687
189	LUB OILS & GREASES	0.00013
193	TIRES & INNER TUBES	0.04016
196	FABRICATED RUBBER PROD., N.E.C	0.00035
197	MISC. PLASTIC PRODUCTS	0.00026
198	HOSE & BELTING	0.00182
200	FOOTWEAR, CUT STOCK	0.00017
204	LEATHER GOODS, N.E.C.	0.00129
205	GLASS & PROD., EXC. CONTAINERS	0.00046
208	STRUCTURAL CLAY PRODUCTS	0.00338
209	KITCHEN POTTERY	0.00019
211	CONCRETE BLOCK & BRICK	0.00267
212	CONCRETE PRODUCTS, N.E.C.	0.00007
217	ABRASIVE PRODUCTS	0.00019
218	ASBESTOS PROD. & SEALING DEV.	0.00406
222	NONMETALLIC MIN. PROD., N.E.C.	0.00069
223	BLAST FURNACES & STEEL MILLS	0.00497
224	ELECTROMETALLURGICAL PRODUCTS	0.00007
225	STEEL WIRE & RELATED PRODUCTS	0.00078
231	PRIMARY METAL PRODUCTS, N.E.C.	0.00007
240	NONFER. ROLL. & DRAW., N.E.C.	0.00180
241	NONF.WIRE DRAW. & INSULATING	0.00007
243	BRASS, BRONZE & COPPER CASTING	0.00040
246	METAL CANS	0.00164
247	METAL BARRELS, DRUMS & PAILS	0.00044
248	METAL SANITARY WARE	0.00096
249	PLUMBING FITTINGS & TRIM	0.00071
250	HEATING EQUIP, EXC. ELECTRICAL	0.00261
251	FABRICATED STRUCTURAL METAL	0.06265
253	FABRIC. PLATE WORK (BOILERSHOP	0.01509
255	ARCHITECTURAL METAL WORK	0.00056
256	MISC. METAL WORK	0.06201
257	SCREW MACHINE PRODUCTS	0.00784
259	OTHER METAL STAMPINGS	0.00017
260	CUTLERY	0.01416
261	HAND & EDGE TOOLS, N.E.C.	0.00533
263	HARDWARE, N.E.C.	0.00427
266	MISC. FABRICATED WIRE PRODUCTS	0.00215
267	STEEL SPRINGS	0.00063
268	PIPE VALVES & PIPE FITTINGS	0.01229
270	FABR. METAL PRODUCTS, N.E.C.	0.03533
271	STEAM ENGINES & TURBINES	0.31277
272	INTERNAL COMB. ENGINES, N.E.C.	0.07114
273	FARM MACHINERY	0.00070
274	LAWN & GARDEN EQUIPMENT	0.00067
275	CONSTRUCTION MACHINERY	0.05843

DRI CODE	INDUSTRY	VECTOR
276	MINING MACH., EXC. OIL	0.01064
277	OIL FIELD MACHINERY	0.00544
279	CONVEYORS & CONVEYING EQUIP.	0.00023
280	HOISTS, CRANES & MONORAILS	0.02221
281	INDUSTRIAL TRUCKS & TRACTORS	0.12491
282	MACHINE TOOLS, METAL CUTTING	0.02077
283	MACHINE TOOLS, METAL FORMING	0.00501
284	SPECIAL DIES, TOOLS, ACCESS.	0.00155
285	POWER DRIVEN HAND TOOLS	0.00056
286	ROLLING MILL MACHINERY	0.00010
287	METALWORKING MACHINERY, N.E.C.	0.00776
288	FOOD PRODUCTS MACHINERY	0.00009
289	TEXTILE MACHINERY	0.01609
290	WOODWORKING MACHINERY	0.00026
291	PAPER INDUSTRIES MACHINERY	0.00045
292	PRINTING TRADES MACHINERY	0.00922
293	SP. INDUSTRY MACHINERY, N.E.C.	0.03769
294	PUMPS & COMPRESSORS	0.01166
295	BALL & ROLLER BEARINGS	0.00929
296	BLOWERS & FANS	0.00477
298	POWER TRANSMISSION EQUIPMENT	0.02452
299	INDUSTRIAL FURNACES & OVENS	0.00207
300	GEN. INDUSTRIAL MACH., N.E.C.	0.06000
303	ELECTRONIC COMPUTING EQUIP.	0.67453
304	CALCULATING & ACCOUNTING MACH.	0.00660
306	OFFICE MACHINES, N.E.C.	0.00684
307	AUTO. MERCHANDISING MACHINERY	0.00016
308	COMMERCIAL LAUNDRY EQUIPMENT	0.01369
309	REFRIG. & HEATING EQUIPMENT	0.02556
311	SERVICE INDUSTRY MACH., N.E.C.	0.01751
312	ELECTRIC MEASURING INSTRUMENTS	0.06237
313	TRANSFORMERS	0.00244
314	SWITCHGEAR & SWITCHBOARDS	0.00850
315	MOTORS & GENERATORS	0.13754
316	INDUSTRIAL CONTROLS	0.00934
318	CARBON & GRAPHITE PRODUCTS	0.00013
319	ELECTRIC INDUSTR. APPAR, N.E.C	0.62531
320	HOUSEHOLD COOKING EQUIP.	0.00037
326	HOUSEHOLD APPL., N.E.C.	0.00848
327	ELECTRIC LAMPS	0.00003
328	LIGHTING FIXTURES	0.00029
329	WIRING DEVICES	0.01127
330	RADIO & TV RECEIVING SETS	0.01192
331	PHONOGRAPH RECORDS & TAPE	0.00032
332	TELEPHONE & TELEGRAPH EQUIP.	0.08751
333	RADIO & TV COMM. EQUIPMENT	11.52748

DRI CODE	INDUSTRY	VECTOR
334	ELECTRON TUBES	0.01192
335	SEMICONDUCTORS	0.00439
336	ELECTRONIC CAPACITORS	0.00026
337	RESISTORS, FOR ELEC. APPLIC.	0.00033
338	ELEC. COILS, TRANSFORMERS, ETC	0.00068
340	ELECTRONIC COMPONENTS, N.E.C.	0.07233
341	STORAGE BATTERIES	0.01614
342	PRIMARY BATTERIES, DRY & WET	0.04946
343	X-RAY APPRATUS & TUBES	0.00220
345	ELECTRICAL EQUIP., N.E.C.	0.00546
347	TRUCK TRAILERS	0.88592
348	MOTOR VEHICLES-AUTOS	5.37900
349	MOTOR VEHICLES-OTHER	0.91892
350	MOTOR VEHICLE PARTS & ACCESS.	1.23319
351	AIRCRAFT	2.09699
352	AIRCRAFT ENG. & ENG. PARTS	0.36113
353	AIRCRAFT PARTS & EQUIP., N.E.C	0.50177
354	SHIPBUILDING & REPAIRING	0.10029
355	BOATBUILDING & REPAIRING	0.00540
356	RAILROAD EQUIPMENT	0.00380
357	MOTORCYCLES, BICYCLES & PARTS	0.00033
361	ENGINEERING & SCIENTIFIC INST.	0.73043
362	MEASURING & CONTROL INSTRUMENT	0.80211
363	SURGICAL & MEDICAL INSTRUMENTS	0.01673
364	SURGICAL APPLIANCES & SUPPLIES	0.00456
365	DENTAL EQUIP. & SUPPLIES	0.00040
367	OPTICAL INSTR. & LENSES	0.18064
369	PHOTOGRAPHIC EQ. & SUPPLIES	0.00887
370	JEWELRY, PRECIOUS METAL	0.00002
374	MUSICL INSTRUMENTS & PARTS	0.00036
375	TOYS AND SPORTING GOODS	0.00215
376	OFFICE & ARTISTS' MATERIALS	0.00083
379	MISC. MFGING, DURABLE GOODS.	0.26278
380	RAILROADS & RAIL-RELATED SERV.	0.22909
381	PASSENGER TRANSPORTATION,N.E.C	0.08237
382	MOTOR FREIGHT	0.96538
383	WATER TRANS. & REL. SERVICES	0.00036
384	AIR CARRIERS & REL. SERVICES	1.12400
386	TRANSPORTION SERVICES, N.E.C.	0.08439
387	COMMUNICATIONS, EX. RADIO & TV	0.81700
389	ELECTRIC UTILITIES	1.18764
390	GAS UTILITIES	0.19494
391	WATER & SEWER SERVICES	0.12547
398	REAL ESTATE	0.30196
399	HOTELS & LODGING PLACES	0.53782
403	COMPUTER & DATA PROCESSING	0.32106

DRI CODE	INDUSTRY	VECTOR
405	EQUIP. RENTAL & LEASING	0.10258
406	MISC. BUSINESS SERVICES	2.47580
411	OTHER	0.00853
412	LEGAL SERVICES	0.00009
413	ENG., ARCHIT., SURVEYING	0.74382
415	EATING & DRINKING PLACES	0.30179
416	AUTO RENTAL & LEASING (W/ODR.)	0.03975
419	AMUSEMENT & RECREATION SERVICE	0.00053
420	DOCTORS & DENTISTS	0.02881
422	NURSING&PERSONAL CARE	0.01768
423	OTHER MEDICAL & HEALTH SERVICE	0.12284
424	EDUCATIONAL SERVICES	0.26142
426	SOCIAL SERVICES, N.E.C.	0.00209
427	U.S. POSTAL SERVICE	0.17736
428	OTHER FED. GOV'T ENTERPRISES	0.02908
432	FEDERAL EMPLOYEE	43.20392

APPENDIX L.
O&M VECTORS FOR AIR FORCE (NATIONAL GUARD)

DRI CODE	INDUSTRY	VECTOR
50	COMPLETE GUIDED MISSILES	15.31302
51	AMMO, EXCEPT SMALL ARMS, N.E.C	0.21359
52	TANKS & TANK COMPONENTS	0.00066
53	SMALL ARMS	0.69124
54	SMALL ARMS AMMUNITION	0.06557
55	OTHER ORDNANCE & ACCESSORIES	0.09642
63	ICE CREAM & FROZEN DESSERTS	0.00198
64	FLUID MILK	0.00094
69	PICKLES, SAUCES & SALAD DRESS.	0.00033
70	FRESH OR FROZEN PACKAGED FISH	0.03356
71	FROZEN FRUITS & VEGETABLES	0.00212
74	BLENDED & PREPARED FLOUR	0.00189
81	SUGAR	0.00061
89	BOTTLED & CANNED SOFT DRINKS	0.00387
94	ANIMAL & MARINE FATS & OILS	0.00027
95	ROASTED COFFEE	0.00751
99	FOOD PREPARATIONS, N.E.C.	0.01898
104	BROADWOVEN FABRIC PLANTS	0.00058
108	FLOOR COVERINGS	0.01193
111	TEXTILE GOODS N.E.C.	0.00626
112	HOSIERY & KNIT GOODS	0.00077
114	APPAREL FROM PURCHASED MATERIAL	0.02438
115	HOUSE FURNISHINGS	0.00449
116	FABRIC TEXTILE PRODUCTS, N.E.C	0.06030
118	SAWMILLS & PLANING MILLS, GEN	0.00079
130	WOODEN CONTAINERS	0.01941
131	WOOD HOUSEHOLD FURNITURE	0.03708
136	MATTRESSES & BEDSPRINGS	0.00400
137	WOOD OFFICE FURNITURE	0.08220
143	FURNITURE & FIXTURES, N.E.C.	0.02936
145	PAPER MILLS, EX. BLDING PAPER	0.00017
149	BLDING PAPER & BOARD MILLS	0.00076
151	BAGS, EXC. TEXTILE BAGS	0.00031
155	PAPERBOARD CONTAINERS & BOXES	0.00130
156	NEWSPAPER	0.00566
158	BOOK PUBLISHING	0.00686
160	MISC. PUBLISHING	0.00919
161	COMMERCIAL PRINTING	0.00010
162	MANIFOLD BUSINESS FORMS	0.01261
168	INORGANIC & ORGANIC CHEMICALS	0.00490
171	AG CHEMICALS, N.E.C.	0.00027
173	ADHESIVES & SEALANTS	0.00045
177	CHEM. PREPARATIONS, N.E.C.	0.12271
178	PLASTIC MATERIALS & RESINS	0.00020
182	DRUGS	0.00133
183	SOAP & OTHER DETERGENTS	0.00241

DRI CODE	INDUSTRY	VECTOR
184	POLISHES & SANITATION GOODS	0.00028
186	TOILET PREPARATIONS	0.00067
187	PAINTS & ALLIED PRODUCTS	0.00110
188	PETROL. REFINING & REL. PROD.	2.81492
189	LUB OILS & GREASES	0.00049
190	PROD OF PETR & COAL NEC	0.00091
193	TIRES & INNER TUBES	0.05409
196	FABRICATED RUBBER PROD., N.E.C	0.00727
197	MISC. PLASTIC PRODUCTS	0.00139
198	HOSE & BELTING	0.00607
200	FOOTWEAR, CUT STOCK	0.00149
203	LUGGAGE	0.00026
204	LEATHER GOODS, N.E.C.	0.00025
209	KITCHEN POTTERY	0.00036
211	CONCRETE BLOCK & BRICK	0.00066
217	ABRASIVE PRODUCTS	0.00105
218	ASBESTOS PROD. & SEALING DEV.	0.01648
222	NONMETALLIC MIN. PROD., N.E.C.	0.00008
223	BLAST FURNACES & STEEL MILLS	0.00029
225	STEEL WIRE & RELATED PRODUCTS	0.00521
240	NONFER. ROLL. & DRAW., N.E.C.	0.00035
243	BRASS, BRONZE & COPPER CASTING	0.00022
246	METAL CANS	0.00087
247	METAL BARRELS, DRUMS & PAILS	0.00649
248	METAL SANITARY WARE	0.00329
249	PLUMBING FITTINGS & TRIM	0.01445
250	HEATING EQUIP, EXC. ELECTRICAL	0.00336
251	FABRICATED STRUCTURAL METAL	0.00886
253	FABRIC. PLATE WORK (BOILERSHOP	0.00702
254	SHEET METAL WORK	0.00086
255	ARCHITECTURAL METAL WORK	0.00269
256	MISC. METAL WORK	0.06185
257	SCREW MACHINE PRODUCTS	0.02680
259	OTHER METAL STAMPINGS	0.00234
260	CUTLERY	0.00505
261	HAND & EDGE TOOLS, N.E.C.	0.00477
263	HARDWARE, N.E.C.	0.00346
266	MISC. FABRICATED WIRE PRODUCTS	0.00067
267	STEEL SPRINGS	0.00158
268	PIPE VALVES & PIPE FITTINGS	0.07349
270	FABR. METAL PRODUCTS, N.E.C.	0.02946
271	STEAM ENGINES & TURBINES	0.50056
272	INTERNAL COMB. ENGINES, N.E.C.	0.01269
273	FARM MACHINERY	0.00031
274	LAWN & GARDEN EQUIPMENT	0.00158
275	CONSTRUCTION MACHINERY	0.01256

DRI CODE	INDUSTRY	VECTOR
276	MINING MACH., EXC. OIL	0.00255
279	CONVEYORS & CONVEYING EQUIP.	0.02315
280	HOISTS, CRANES & MONORAILS	0.00252
281	INDUSTRIAL TRUCKS & TRACTORS	0.38388
282	MACHINE TOOLS, METAL CUTTING	0.04026
283	MACHINE TOOLS, METAL FORMING	0.01037
284	SPECIAL DIES, TOOLS, ACCESS.	0.01316
285	POWER DRIVEN HAND TOOLS	0.00160
286	ROLLING MILL MACHINERY	0.00010
287	METALWORKING MACHINERY, N.E.C.	0.00175
288	FOOD PRODUCTS MACHINERY	0.00017
289	TEXTILE MACHINERY	0.03849
290	WOODWORKING MACHINERY	0.00035
291	PAPER INDUSTRIES MACHINERY	0.00062
292	PRINTING TRADES MACHINERY	0.01357
293	SP. INDUSTRY MACHINERY, N.E.C.	0.01089
294	PUMPS & COMPRESSORS	0.08117
295	BALL & ROLLER BEARINGS	0.03685
296	BLOWERS & FANS	0.00395
298	POWER TRANSMISSION EQUIPMENT	0.04791
299	INDUSTRIAL FURNACES & OVENS	0.01133
300	GEN. INDUSTRIAL MACH., N.E.C.	0.19500
303	ELECTRONIC COMPUTING EQUIP.	2.38243
304	CALCULATING & ACCOUNTING MACH.	0.01584
306	OFFICE MACHINES, N.E.C.	0.05405
308	COMMERCIAL LAUNDRY EQUIPMENT	0.00892
309	REFRIG. & HEATING EQUIPMENT	0.02474
311	SERVICE INDUSTRY MACH., N.E.C.	0.01657
312	ELECTRIC MEASURING INSTRUMENTS	0.47745
313	TRANSFORMERS	0.00095
314	SWITCHGEAR & SWITCHBOARDS	0.01318
315	MOTORS & GENERATORS	0.26045
316	INDUSTRIAL CONTROLS	0.05354
317	WELDING APPARATUS	0.00094
318	CARBON & GRAPHITE PRODUCTS	0.00018
319	ELECTRIC INDUSTR. APPAR, N.E.C	0.02268
320	HOUSEHOLD COOKING EQUIP.	0.00213
326	HOUSEHOLD APPL., N.E.C.	0.02208
327	ELECTRIC LAMPS	0.00148
329	WIRING DEVICES	0.03621
330	RADIO & TV RECEIVING SETS	0.02775
331	PHONOGRAPH RECORDS & TAPE	0.00098
332	TELEPHONE & TELEGRAPH EQUIP.	0.13825
333	RADIO & TV COMM. EQUIPMENT	10.98347
334	ELECTRON TUBES	0.05881
335	SEMICONDUCTORS	0.05041

DRI CODE	INDUSTRY	VECTOR
336	ELECTRONIC CAPACITORS	0.00030
337	RESISTORS, FOR ELEC. APPLIC.	0.00814
338	ELEC. COILS, TRANSFORMERS, ETC	0.00762
340	ELECTRONIC COMPONENTS, N.E.C.	0.73872
341	STORAGE BATTERIES	0.01414
342	PRIMARY BATTERIES, DRY & WET	0.00797
343	X-RAY APPRATUS & TUBES	0.00462
345	ELECTRICAL EQUIP., N.E.C.	0.00188
347	TRUCK TRAILERS	0.01070
348	MOTOR VEHICLES-AUTOS	0.00067
349	MOTOR VEHICLES-OTHER	0.06360
350	MOTOR VEHICLE PARTS & ACCESS.	0.05434
351	AIRCRAFT	6.47493
352	AIRCRAFT ENG. & ENG. PARTS	6.47489
353	AIRCRAFT PARTS & EQUIP., N.E.C	5.62842
354	SHIPBUILDING & REPAIRING	0.05152
355	BOATBUILDING & REPAIRING	0.00030
356	RAILROAD EQUIPMENT	0.00102
357	MOTORCYCLES, BICYCLES & PARTS	0.00085
361	ENGINEERING & SCIENTIFIC INST.	5.62847
362	MEASURING & CONTROL INSTRUMENT	0.14463
363	SURGICAL & MEDICAL INSTRUMENTS	0.08004
364	SURGICAL APPLIANCES & SUPPLIES	0.00222
365	DENTAL EQUIP. & SUPPLIES	0.00565
367	OPTICAL INSTR. & LENSES	0.02929
369	PHOTOGRAPHIC EQ. & SUPPLIES	0.05758
374	MUSICL INSTRUMENTS & PARTS	0.00023
375	TOYS AND SPORTING GOODS	0.00397
376	OFFICE & ARTISTS' MATERIALS	0.00070
379	MISC. MFGING, DURABLE GOODS.	4.71629
380	RAILROADS & RAIL-RELATED SERV.	0.00002
381	PASSENGER TRANSPORTATION, N.E.C	0.01592
382	MOTOR FREIGHT	0.02377
383	WATER TRANS. & REL. SERVICES	0.00026
384	AIR CARRIERS & REL. SERVICES	1.27714
386	TRANSPORTION SERVICES, N.E.C.	0.03141
387	COMMUNICATIONS, EX. RADIO & TV	0.07146
389	ELECTRIC UTILITIES	1.10999
390	GAS UTILITIES	0.23324
391	WATER & SEWER SERVICES	0.12040
398	REAL ESTATE	0.00042
399	HOTELS & LODGING PLACES	0.00266
403	COMPUTER & DATA PROCESSING	2.21325
405	EQUIP. RENTAL & LEASING	0.18170
406	MISC. BUSINESS SERVICES	9.83546
411	OTHER	0.02721

DRI CODE	INDUSTRY	VECTOR
412	LEGAL SERVICES	0.00068
413	ENG., ARCHIT., SURVEYING	0.44808
414	ACCTING.AUDITING & MISC. PROJ.	0.00831
415	EATING & DRINKING PLACES	0.00028
416	AUTO RENTAL & LEASING (W/ODR.)	0.00000
419	AMUSEMENT & RECREATION SERVICE	0.00009
420	DOCTORS & DENTISTS	0.01646
422	NURSING&PERSONAL CARE	0.00400
423	OTHER MEDICAL & HEALTH SERVICE	0.02969
424	EDUCATIONAL SERVICES	0.24810
426	SOCIAL SERVICES, N.E.C.	0.00022
427	U.S. POSTAL SERVICE	0.00001
428	OTHER FED. GOV'T ENTERPRISES	0.28276
430	NONCOMPARABLE IMPORTS	9.23102
432	FEDERAL EMPLOYEE	8.19681