

AD-A260 034



2

TGAL-92-03

**DEVELOP AN X-WINDOWS TOOL TO COMPUTE
GAUSSIAN BEAM SYNTHETIC SEISMOGRAMS**

J. Peter Davis and Ivan H. Henson

Teledyne Geotech Alexandria Laboratories
314 Montgomery Street
Alexandria, Virginia 22314-1581

APRIL 1992

SEMI-ANNUAL REPORT: No. 1 (23 August 1991 - 4 April 1992)
ARPA ORDER NO.: 6731
PROJECT TITLE: X-Windows Tool to Compute Gaussian Beam
Synthetic Seismograms
CONTRACT NO.: F29601-91-C-DB04

Approved for Public Release; Distribution Unlimited

Prepared for:
PHILLIPS LABORATORY
KIRTLAND AFB, NM 87117-5320

Monitored by:
DEFENSE ADVANCED RESEARCH PROJECTS AGENCY
NUCLEAR MONITORING RESEARCH OFFICE
3701 NORTH FAIRFAX DRIVE
ARLINGTON, VA 22203-1714

DTIC
SELECTE
NOV 10 1992
S B D

The views and conclusions contained in this report are those of the authors and should not be interpreted as representing the official policies, either expressed or implied, of the Defense Advanced Research Projects Agency or the U.S. Government.

92-29156



REPORT DOCUMENTATION PAGE

Form Approved
OMB No. 0704-0188

Public reporting burden for this collection of information is estimated to average 1 hour per response, including the time for reviewing instructions, searching existing data sources, gathering and maintaining the data needed, and completing and reviewing the collection of information. Send comments regarding this burden estimate or any other aspect of this collection of information, including suggestions for reducing this burden, to Washington Headquarters Services, Directorate for Information Operations and Reports, 1215 Jefferson Davis Highway, Suite 1204, Arlington, VA 22202-4302, and to the Office of Management and Budget, Paperwork Reduction Project (0704-0188), Washington, DC 20503.

1. AGENCY USE ONLY (Leave blank)	2. REPORT DATE 4 April 1992	3. REPORT TYPE AND DATES COVERED Technical Report, 23 Aug 1991 - 4 Apr 1992	
4. TITLE AND SUBTITLE Develop an X-Windows Tool to Compute Gaussian Beam Synthetic Seismograms		5. FUNDING NUMBERS Contract F29601-91-C-DB04	
6. AUTHOR(S) J. Peter Davis and Ivan H. Henson			
7. PERFORMING ORGANIZATION NAME(S) AND ADDRESS(ES) Teledyne Geotech Alexandria Laboratory 314 Montgomery Street Alexandria, VA 22314-1581		8. PERFORMING ORGANIZATION REPORT NUMBER TGAL-92-03	
9. SPONSORING/MONITORING AGENCY NAME(S) AND ADDRESS(ES) DARPA-NMRO 3701 N. Fairfax Drive #717 Arlington, VA 22203-1714		10. SPONSORING/MONITORING AGENCY REPORT NUMBER Phillips Laboratory (PL/PKRC) Kirtland AFB, NM 87117-5320	
11. SUPPLEMENTARY NOTES			
12a. DISTRIBUTION/AVAILABILITY STATEMENT Approved for Public Release; Distribution Unlimited		12b. DISTRIBUTION CODE	
13. ABSTRACT (Maximum 200 words) This report consists of two principal sections: an introduction in which the functional flow and the basic architecture of a prototype system for computing synthetic seismograms using the Gaussian Beam method are described, and a second section in which progress toward implementing that design is outlined. To maximize functionality, the design integrates as much as possible software already developed under the NMRD initiative: code for handling database transactions, inter-process communication and graphical display of seismograms are assumed to exist. The system has two modules. The first provides X-Windows graphics to allow the user to construct and manipulate two-dimensional earth models, and also to trace the propagation of seismic waves through those models. The second module computes synthetic seismograms and/or calculate traveltimes for models constructed with the first. It has no graphical component. The raytracing capabilities of the program have been found to be very fast, owing in part to the way the velocity model has been parameterized. Several figures demonstrating model construction and raytracing are included.			
14. SUBJECT TERMS Gaussian Beams, Synthetic Seismograms, X-Windows tools		15. NUMBER OF PAGES 19	
		16. PRICE CODE	
17. SECURITY CLASSIFICATION OF REPORT Unclassified	18. SECURITY CLASSIFICATION OF THIS PAGE Unclassified	19. SECURITY CLASSIFICATION OF ABSTRACT Unclassified	20. LIMITATION OF ABSTRACT UL

Table of Contents

Table of Contents	i
1. Objectives	1
2. Functional Outline	1
3. System Architecture	3
4. Progress	5
5. Future Plans	7
6. Distribution List	9

DTIC QUALITY INSPECTION

Accession For	
NTIS GRA&I	<input checked="" type="checkbox"/>
DTIC TAB	<input type="checkbox"/>
Unannounced	<input type="checkbox"/>
Justification	
By _____	
Distribution/	
Availability Codes	
Dist	Avail and/or Special
A-1	

(THIS PAGE INTENTIONALLY LEFT BLANK)

1. OBJECTIVES

The principal objective of this project is to create an X-Windows-based graphics tool to compute rapidly and efficiently, synthetic seismograms for laterally heterogeneous, two-dimensional, isotropic velocity models using the Gaussian beam method. The existing Gaussian beam software is written in Fortran code and can be very labor intensive to use. Our goal is to construct an X-Windows Graphical User Interface (GUI) which will eliminate much of the tedium of introducing lateral heterogeneity into two-dimensional velocity models.

In this report, we describe the overall architecture of the modules and how they interface with software already developed under the rubric of the NMRD. A brief explanation of how Gaussian beam seismograms are computed is included for clarity. Finally we conclude with an outline of progress to date and our objectives for the remainder of the contract.

2. FUNCTIONAL OUTLINE

The functional flow for computing Gaussian beam seismograms and/or calculating traveltimes through heterogeneous media is shown in Figure 1. The first step is either to create an input model from scratch or to access a fully two-dimensional model which has been created previously. The former is generally done by beginning with a one-dimensional model and extending it into a second dimension. Once in this extended form the user may impose an overall heterogeneity, such as ellipticity in the case of a global model, or a localized heterogeneity, such as a sedimentary basin with low-velocity lens in the case of a regional model. Additional heterogeneity may be created by manually manipulating the model elements with a mouse. Whether created or read in and modified, the model may be stored at the end of this step.

The velocity model is specified as a series of knotpoints and triangles. Each knotpoint fixes v_p , v_s , and ρ at a point in space. Because the velocity gradient is assumed to be linear between each knotpoint, the velocity is effectively specified fully in two dimensions. (One exception is at discontinuities: there two knotpoints are spatially co-located and specify the velocity and density on each side of the discontinuity.) Knotpoints are grouped into triplets to form triangles. A value for Q_α and Q_β , the P - and S -wave attenuation, is assigned to the space enclosed by each triangle. The program tracks which triangles share knotpoints and are therefore "neighbors."

Under these linear gradient conditions, there is an analytical solution for the raypath across a triangle. Raytracing through the model is accomplished by stepwise tracing analytically through each component triangle along the raypath. Anelasticity is accounted for by computing a t^* operator using Q_α and Q_β from the triangles. This is the second step shown in Figure 1. Results from this step are also stored for later reference.

The essentials for traveltime calculation or seismogram computation are now complete. One should remember that in the Gaussian beam method, it is not necessary to compute rays which travel directly from source to receiver. Rather, it is sufficient to compute a number of rays which originate at the source and terminate within several

Functional Analysis

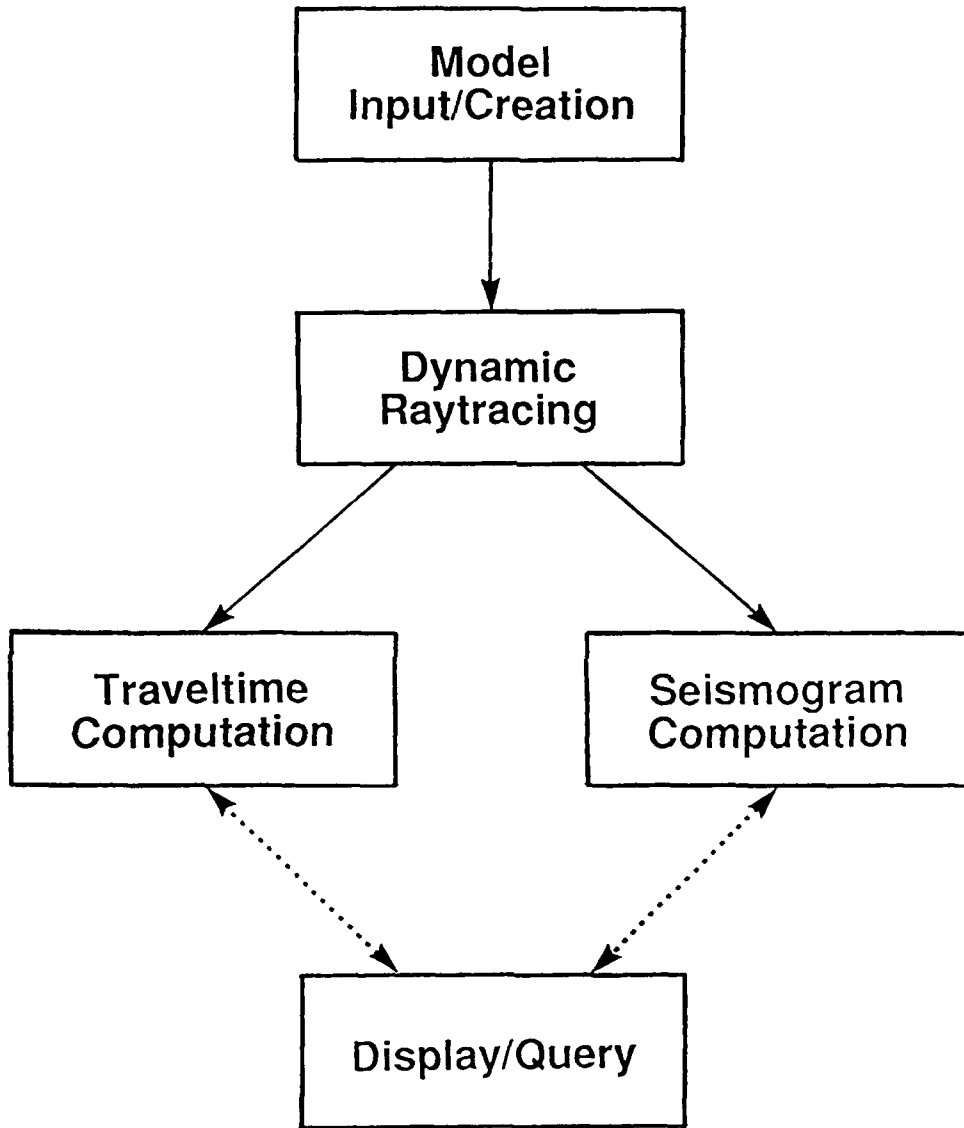


Figure 1.

wavelengths of the receiver. Therefore, to obtain a traveltime or seismogram, one must first specify the source-receiver geometry and phase, or component phases in the latter case.

System Architecture

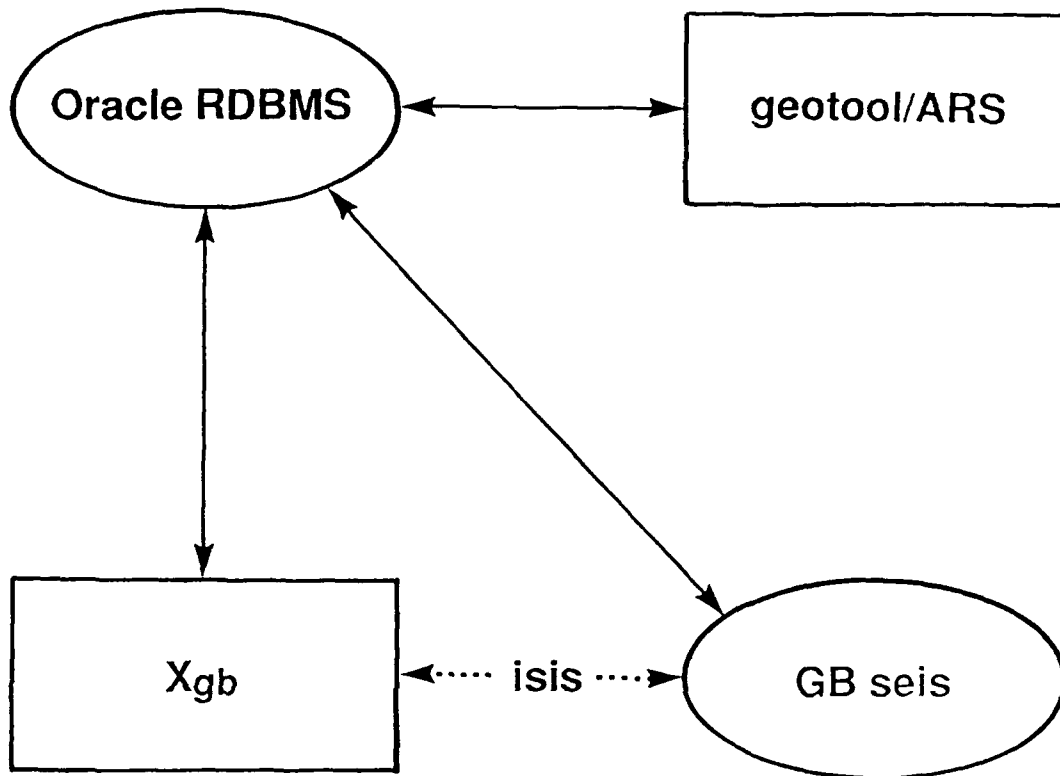


Figure 2.

This is represented by the display/query box at the bottom of Figure 1. Since the prerequisites have all been computed, one may repeatedly access the model and ray information to obtain traveltimes and seismograms for different receivers and focal mechanisms.

3. SYSTEM ARCHITECTURE

How the functional capabilities are realized is outlined in Figure 2. In this diagram, rectangles represent programs with an X-windows graphical component, ellipses enclose the names of background processes, and ISIS is the name of the interprocess communication (IPC) module employed by the NMRD system. The modules being developed for this project are *Xgb* and *GBseis*.

It is *Xgb* which is at the heart of this system. The X-windows interface allows the user to create or modify two-dimensional earth models. If a velocity structure is to be assembled from scratch, the user is presented with a suite of one-dimensional models,

either global, regional, or customized by the user. The one-dimensional model is recast into triangles extending laterally. Alternatively, the user may read in a model created with *Xgb* on a previous run. This is accessed from where it is stored on disc via the Oracle Relational Database Management System (RDBMS) running at the Center for Seismic Studies. A prototype application-specific database table to handle Gaussian beam model storage is shown in Table 1 as relation *gbmodel*.

Once the models are input, they may be modified in several ways. One way is to apply a spatial filter to all knotpoints. Examples of situations for which this may be desirable are to account for ellipticity in global models, or for synclines or inclined layers in local or regional models. The outcome of the filtering process is displayed immediately, so the user can inspect to see if the results are satisfactory, and if not, can reverse the process.

Additionally, the user may introduce heterogeneity via the mouse by manipulating the spatial location of knotpoints or by selecting a triangle or series of triangles and allowing the user to modify the properties of those selected. This includes the velocities and densities assigned to the constituent knotpoints as well as the attenuation. The functionality is provided as an overlay of the filtering mechanism. That is to say, mouse manipulation may be done before or after a filtering operation.

Once the model is adjusted to the satisfaction of the operator, raytracing may be performed with *Xgb*. This is accomplished by specifying the initial ray parameter of the ray and by describing the discontinuity interactions, namely what discontinuities the ray encounters and whether it is reflected, transmitted, or converted there. The user has mouse control of the source location, and every time the source position is changed, rays are automatically retraced through the medium. The operator has the option of modifying the model and retracing the rays. Therefore iteration of model alteration, source position change, and ray specification can be done until the operator wishes to preserve the results. Like the model, raytracing results are stored in a file for later reference, and a pointer to this file location is passed to the Oracle RDBMS. A prototype table for storing this information is shown in Table 1 as relation *gbrays*.

The computational functions of *Xgb* are complete at this stage. Traveltime calculation and synthetic seismogram computation are performed by the non-graphic server process *GBseis*. This is accessed via IPC messages instructing it what function, traveltime or synthetic seismogram, to fulfill. If the function is traveltime calculation, *GBseis* will return its results via IPC reply. If it is seismogram computation, the results will be written to disk, registered in the database, and an IPC acknowledgment sent. *Xgb* will be able to form the proper IPC messages to prompt *GBseis* to perform the described calculations, and specifications of the IPC messages will be provided so that other processes will be able to do so as well.

By design, there is no capability in either *Xgb* or *GBseis* to display the resulting synthetic seismograms. In keeping with the NMRD goal of modular design and distributed processing, this task is left to modules such as the Analyst Review Station (ARS) or Geotool, both under NMRD development.

<i>Relation:</i>		gbmodel			
<i>Description:</i>		Gaussian beam models			
attribute name	field no.	storage type	external format	character positions	attribute description
modelid	1	i4	i8	1-8	model id
dir	2	c64	a64	10-73	directory
dfile	3	c32	a32	75-106	data file
commid	4	i4	i8	108-115	comment id
lddate	5	date	a17	117-133	load date

<i>Relation:</i>		gbrays			
<i>Description:</i>		Gaussian beam raytracing results			
attribute name	field no.	storage type	external format	character positions	attribute description
modelid	1	i4	i8	1-8	model id
dir	2	c64	a64	10-73	directory
dfile	3	c32	a32	75-106	data file
xsrc	4	f8	f16.3	108-123	x src coordinate
zsrc	5	f8	f16.3	125-140	z src coordinate
commid	6	i4	i8	142-149	comment id
lddate	7	date	a17	151-167	load date

Table 1.

4. PROGRESS

The basic core of the module *Xgb* is nearly complete. The code for model construction and kinematic raytracing has been translated from Fortran to C so that it may be more smoothly integrated into the X-windows display routines. The user may now select from a suite of one-dimensional models, the starting model that is projected into a second dimension and displayed using NMRD plotting widgets developed elsewhere.

Such a display is shown in Figure 3. Here a simple four-layer velocity model has been extended laterally. At this stage, all knotpoints at a given depth share the same velocity and density as befits the one-dimensional model from which they were generated. What cannot be shown in this black-and-white representation is that there are discontinuities between the first and second layers and between the second and third layers. On a color display, these discontinuities are shown in a different color to indicate they are different from normal triangle sides.

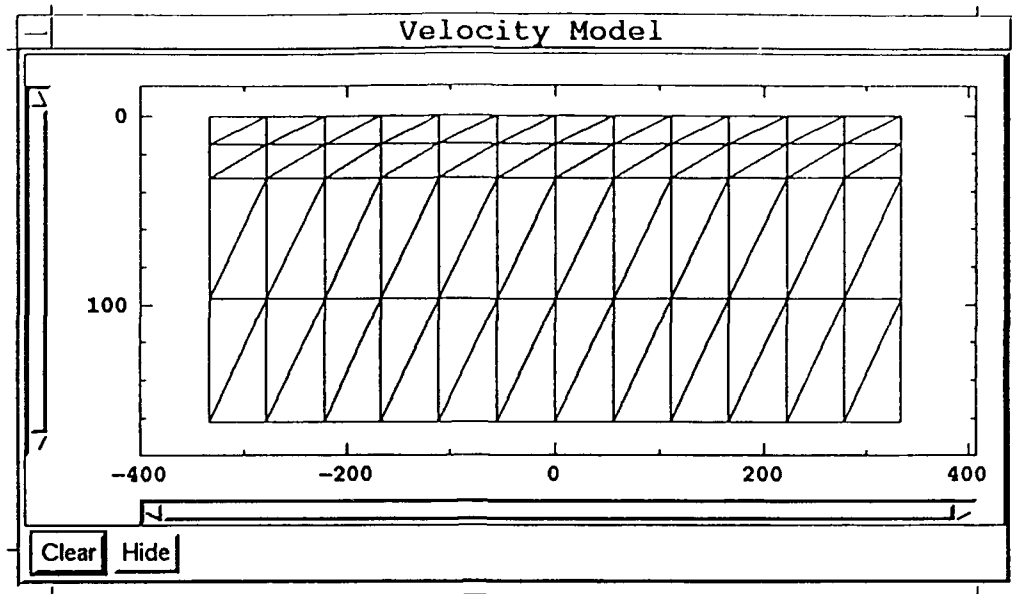


Figure 3

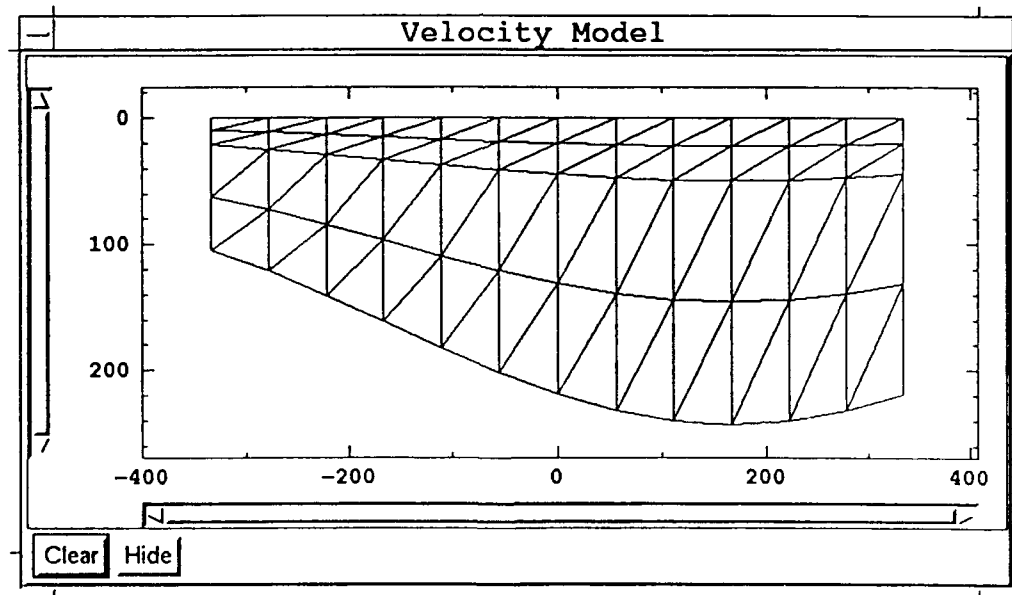


Figure 4

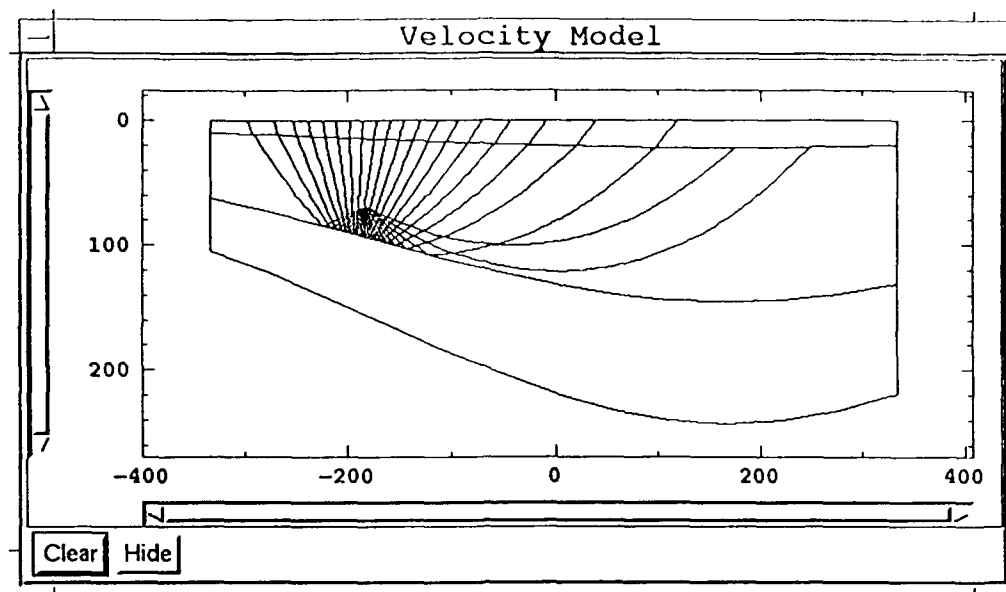


Figure 5

The capacity to warp the model into a simple synclinal or anticlinal form is now available. The results of applying this simple filter may be seen in Figure 4. Here the one-dimensional model of Figure 3 has been filtered to deform it into a broad synclinal structure. The properties of the knotpoints have not been changed -- only their vertical coordinates. As stated above, this is just one of several filters the operator will be able to apply in the completed version.

The code for accomplishing kinematic raytracing is complete. Figure 5 shows rays reflecting off a discontinuity of the model shown in Figure 4. The triangles are omitted from the display here for clarity -- only the rays and the discontinuities are shown. Before synthetic seismograms can be computed, the dynamic aspects of the raytracing must be incorporated. This is a straightforward extension of the raytracing functions already coded.

5. FUTURE PLANS

There are three principle developments which must be accomplished in the near term for this system to function: (1) the dynamic raytracing must be coded into *Xgb*, (2) the code for the *GBseis* module must be translated from Fortran to C and IPC hooks installed, and (3) the *Xgb* interface must be modified to allow the user to manipulate individual knots and triangles. At this writing, the logic for (3) had been conceived, and we anticipate only two or three man-days for it to be completed. Likewise, (1) involves another Fortran translation, but with the C structures already implemented, this should not require more than 1-2 man-weeks. The greatest task may be (2), but we expect that the structure of C is so much better suited for computations of this kind that a substantial amount of resources will not be required to complete that task.

When these problems are solved, refinements to the *Xgb* will be added to make the module easier to use. Included in this are plans to (1) allow phases whose rays are to be computed to be selected from a menu list, (2) specify source type as either explosion or double couple, and if the latter, allow the user, via graphics, to alter the orientation of the fault planes and have the changes be reflected in the computed seismograms, and (3) allow the user to project "target" receivers onto the model and check the ray density of rays terminating within a fixed number of wavelengths of the target.

NON-GOVERNMENT CONTRACTORS

Prof. Thomas Ahrens
Seismological Lab, 252-21
Div. of Geol. & Planetary Sciences
California Institute of Technology
Pasadena, CA 91125

Dr. Thomas C. Bahe, Jr.
Dr. Thomas J. Serena, Jr.
Science Applications Int'l Corp.
10260 Campus Point Drive
San Diego, CA 92121
(2 copies)

Dr. Peter Basham
Dr. Robert North
Earth Physics Branch
Geological Survey of Canada
1 Observatory Crescent
Ottawa, Ontario, CANADA K1A 0Y3

Dr. Douglas R. Baumgardt
Dr. Zoltan Dax
ENSCO, Inc.
5400 Port Royal Road
Springfield, VA 22151-2388

Prof. Jonathan Berger
IGPP, A-025
Scripps Institution of Oceanography
University of California, San Diego
La Jolla, CA 92093

Dr. G. A. Bollinger
Department of Geological Sciences
Virginia Polytechnic Institute
21044 Derring Hall
Blacksburg, VA 24061

The Librarian
Dr. Jerry Carter
Dr. Stephen Bratt
Center for Seismic Studies
1300 North 17th Street, Suite 1450
Arlington, VA 22209-2308
(3 copies)

Michael Browne
Teledyne Geotech
3401 Shiloh Road
Garland, TX 75041

Dr. Lawrence J. Burdick
Woodward-Clyde Consultants
566 El Dorado Street
Pasadena, CA 91109-3245

Dr. Theodore Cherry
Science Horizons, Inc.
710 Encinitas Blvd., Suite 200
Encinitas, CA 92024 (2 copies)

Dr. Kin Yip Chun
Geophysics Division
Physics Department
University of Toronto
Ontario, CANADA M5S 1A7

Dr. Paul M. Davis
Dept. Earth & Space Sciences
University of California (UCLA)
Los Angeles, CA 90024

Prof. Steven Day
Department of Geological Sciences
San Diego State University
San Diego, CA 92182

Ms. Eva Johannisson
Senior Research Officer
National Defense Research Institute
P.O. Box 27322
S-102 54 Stockholm, SWEDEN

Dr. Mark D. Fisk
Mission Research Corporation
735 State Street
P.O. Drawer 719
Santa Barbara, CA 93102

Prof. Stanley Flatte
Applied Sciences Building
University of California
Santa Cruz, CA 95064

Robert C. Kemerait
ENSCO, Inc.
445 Pineda Court
Melbourne, FL 32940

Dr. Roger Fritzel
Pacific Sierra Research
1401 Wilson Blvd., Suite 1100
Arlington, VA 22209

Prof. Brian L. N. Kennett
Research School of Earth Sciences
Institute of Advanced Studies
G.P.O. Box 4
Canberra 2601, AUSTRALIA

Dr. Holly K. Given
Inst. Geophys. & Planet. Phys.
Scripps Inst. Oceanography (A-025)
University of California-San Diego
La Jolla, CA 92093

Dr. Richard LaCoss
MIT-Lincoln Laboratory
M-200B
P.O. Box 73
Lexington, MA 02173-0073

Prof. Hans-Peter Harjes
Institute for Geophysik
Ruhr University/Bochum
P.O. Box 102148
4630 Bochum 1, FRG

Prof. Fred K. Lamb
Univ. of Illinois
Department of Physics
1110 West Green Street
Urbana, IL 61801

Prof. Donald V. Helmberger
Seismological Laboratory
Div. of Geol. & Planetary Sciences
California Institute of Technology
Pasadena, CA 91125

Prof. Charles A. Langston
Geosciences Department
403 Deike Building
The Pennsylvania State University
University Park, PA 16802

Prof. Eugene Herrin
Prof. Brian Stump
Inst. for the Study of Earth and Man
Geophysical Laboratory
Southern Methodist University
Dallas, TX 75275

Prof. Thorne Lay
Dr. Susan Schwartz
Institute of Tectonics
Earth Science Board
University of California, Santa Cruz
Santa Cruz, CA 95064

Prof. Bryan Isacks
Prof. Muawia Barazangi
Cornell University
Department of Geological Sciences
SNEE Hall
Ithaca, NY 14850

Prof. Arthur Lerner-Lam
Prof. Paul Richards
Prof. C. H. Scholz
Lamont-Doherty Geol. Observatory
of Columbia University
Palisades, NY 10964

Prof. Lane R. Johnson
Prof. Thomas V. McEvilly
Seismographic Station
University of California
Berkeley, CA 94720

Dr. Manfred Henger
Fed. Inst. for Geosci. & Nat'l Res.
Postfach 510153
D-3000 Hanover 51, FRG

Dr. Peter Marshall
Procurement Executive
Ministry of Defense
Blacknest, Brimpton
Reading RG7-4RS, UNITED KINGDOM

Mr. Jack Murphy
S-CUBED
11800 Sunrise Valley Drive
Suite 1212
Reston, VA 22091
(2 copies)

Dr. Randolph Martin, III
New England Research, Inc.
76 Olcott Drive
White River Junction, VT 05001

Dr. Jay J. Pulli
Radix Systems, Inc.
2 Taft Court, Suite 203
Rockville, MD 20850

Dr. Bernard Massinon
Societe Radiomana
27 rue Claude Bernard
75005 Paris, FRANCE (2 copies)

Dr. Frode Ringdal
Dr. Svein Mykkeltveit
NTNF/NORSAR
P.O. Box 51
N-2007 Kjeller, NORWAY
(2 copies)

Dr. Gary McCartor
Prof. Henry L. Gray
Department of Physics
Southern Methodist University
Dallas, TX 75275

Dr. Wilmer Rivers
Teledyne Geotech
314 Montgomery Street
Alexandria, VA 22314
(2 copies)

Dr. Keith L. McLaughlin
S-CUBED
P.O. Box 1620
La Jolla, CA 92038-1620

Dr. Richard Sailor
TASC, Inc.
55 Walkers Brook Drive
Reading, MA 01867

Dr. Pierre Mecheler
Societe Radiomana
27 rue Claude Bernard
75005 Paris, FRANCE

Prof. Charles G. Sammis
Prof. Kei Aki
Center for Earth Sciences
University of Southern California
University Park
Los Angeles, CA 90089-0741

Prof. Bernard Minster
Prof. John Orcutt
Dr. Holly Given
IGPP, A-025
Scripps Institute of Oceanography
University of California, San Diego
La Jolla, CA 92093

Prof. David G. Simpson
Lamont-Doherty Geological Observatory
of Columbia University
Palisades, NY 10964

Prof. Brian J. Mitchell
Dr. Robert Herzmann
Dept of Earth & Atmospheric Sciences
St. Louis University
St. Louis, MO 63156

Dr. Stewart W. Smith
Geophysics AK-50
University of Washington
Seattle, WA 98195

Prof. Clifford Thurber
 Prof. Robert P. Meyer
 University of Wisconsin-Madison
 Department of Geology & Geophysics
 1215 West Dayton Street
 Madison, WI 53706

Prof. M. Nafi Toksoz
 Prof. Anton Dainty
 Earth Resources Lab
 Mass. Institute of Technology
 42 Carleton Street
 Cambridge, MA 02142

Prof. Terry C. Wallace
 Department of Geosciences
 Building #77
 University of Arizona
 Tucson, AZ 85721

Dr. William Wortman
 Mission Research Corporation
 735 State Street
 P.O. Drawer 719
 Santa Barbara, CA 93102

U.S. GOVERNMENT AGENCIES

Mr. Alfred Lieberman
 ACDA/VI-OA, Room 5726
 320 21st Street, N.W.
 Washington, DC 20451

Colonel Jerry J. Perrizo
 AFOSR/NP, Building 410
 Bolling AFB
 Washington, DC 20331-6448

Dr. Robert Blandford
 AFTAC/CSS
 1300 No. 17th St., Suite 1450
 Arlington, VA 22209

AFTAC/CA
 (STINFO)
 Patrick AFB, FL 32925-6001

Dr. Frank F. Pilotte
 HQ AFTAC/TT
 Patrick AFB, FL 32925-6001

Katie Poley
 CIA-ACIS/TMC
 Room 4X16NHB
 Washington, DC 20505

Dr. Larry Turnbull
 CIA-OSWR/NED
 Washington, DC 20505

Dr. Ralph W. Alewine, III
 Dr. Alan S. Ryall, Jr.
 Ms. Ann U. Kerr
 DARPA/NMRO
 1400 Wilson Blvd.
 Arlington, VA 22209-2308
(7 copies)

DARPA/OASB/Librarian
 1400 Wilson Blvd.
 Arlington, VA 22209-2308

Dr. Dale Glover
 DIA/DT-1B
 Washington, DC 20301

Dr. Michael Shore
 Defense Nuclear Agency/SPSS
 6801 Telegraph Road
 Alexandria, VA 22310

Dr. Max Koontz
 U.S. Dept of Energy/DP-5
 Forrestal Building
 1000 Independence Avenue
 Washington, DC 20585

Defense Technical Information Center
 Cameron Station
 Alexandria, VA 22314 (2 copies)

Dr. John J. Cipar, PL/LW
 Phillips Lab/Geophysics Directorate
 Hanscom AFB, MA 01731

James F. Lawkowitz, PL/LW
Phillips Lab/Geophysics Directorate
Hanscom AFB, MA 01731

Phillips Laboratory (PL/XO)
Hanscom AFB, MA 01731

Dr. James Hannon
Lawrence Livermore National Laboratory
P.O. Box 808
Livermore, CA 94550 (2 copies)

Office of the Secretary of Defense
DDR&E
Washington, DC 20330

Eric Chael
Division 9241
Sandia Laboratory
Albuquerque, NM 87185

Dr. William Leith
U.S. Geological Survey
Mail Stop 928
Reston, VA 22092

Dr. Robert Masse
Box 25046, Mail Stop 967
Denver Federal Center
Denver, CO 80225

Dr. Robert Reinke
WL/NTESG
Kirtland AFB, NM 87117-6008

CDRL MAILING LIST-NM

ORGANIZATION	NAME	NO. COPIES
NON-GOVERNMENT CONTRACTORS		
CALTECH	AHRENS	1
SAC, SAN DIEGO	BACHE, SERENO	2
CANADA, GEOL SURVEY	BASHAM	1
ENSCO, SPRINGFIELD, VA	BAUMGARDT/DER	1
UCSD	BEFGER	1
VPI	BOLLINGER	1
SAC, ROSGLYN	BRATT, CARTER, LIBRARIAN	3
TELEDYNE, GARLAND, TX	BROWNE	1
WOODWARD-CLYDE	BURDICK	1
SHI	CHEFFY	1
U. TORONTO	CHLN	1
UCLA	DAVIS	1
SAN DIEGO STATE U.	DAY	1
SWEDEN, NAT. DEF. RES. INST.	EVA JOHANNISSON	1
MRC, SANTA BARBARA	FISK	1
UCSC	FLATTE	1
PSR	FRITZEL	1
GERMANY, RUHR U	HARJES	1
CALTECH	HELMBERGER	1
SMUGEOPHYS. LAB	HERRIN, STUMP	1
CORNELL	ISACKS, BARAZANGI	1
UCB	JOHNSON, MCEVILLY	1
ENSCO, MELBOURNE, FL	KEMERAT	1
ANU	KENNETT	1
LINCOLN LAB	LACOSS	1
U. ILL	LAMB	1
PENN STATE U.	LANGSTON	1
UCSC	LAY, SCHWARTZ	1
LDGO	LEPNER-LAM/RICHARDS	1
GERMANY, FED INST	MANFRED HENGER	1
AWFE	MARSHALL	1
NER	MARTIN	1
FRANCE, RADIOMANA	MASSON, MECHELER	2
SMUPHYSICS DEPT	MCCARTOR, GRAY	1
S-CUBED, LA JOLLA	MCLAUGHLIN	1
UCSD	MINSTER, ORCUTT, GIVEN	2
ST LOUIS U	MITCHELL, HERFMANN	1
S-CUBED, RESTON	MURPHY	2
RADIX	PULLI	1
NORWAY, NTNIF	RINGDAL	2
TELEDYNE, ALEXANDRIA, VA	RIVERS	2
TASC	SAILOR	1

CDRL MAILING LIST-NM

ORGANIZATION	NAME	NO. COPIES
UBC	SAMMIS, AKI	1
IRIS	IMPSON	2
U. WASHINGTON	SMITH	1
U. WISCONSIN	THURBER, MEYER	1
MIT	TOKSOZ/DAINTY	1
U. AZ	WALLACE	1
MFC, NEWINGTON, VA	WORTMAN	1
US GOVERNMENT AGENCIES		
ACDA	LIEBERMAN	1
APOS/RNP	JERRY PERRIZO	1
AFTAC, CSS, ROSSLYN, VA	BLANDFORD	1
AFTAC/GA	STINFO	1
AFTAC/TT	PILOTTE	1
CIA/ACIS	KATIE POLEY	1
CIA/OSWR	TURNBULL	1
DARPA	ALEWINE, RYALL, KERR	7
DARPA/RMO	LIBRARIAN	1
DIA	GLOVER	1
DNA/SPSS	SHORE	1
DDE	KOONTZ	1
DTIC	INFO CTR	2
GLL/WH	CIPAR	1
GLL/WH	LEWKOWICZ	1
GL/XO	XO	1
LLNL	HANNON	2
OSD	DDFE	1
SANDIA	CHAEI	1
USGS	LEITH	1
USGS	MASSE	1
WL/NTESG	REINKE	1
TOTAL NUMBER OF REPORTS		88