

AD-A264 768



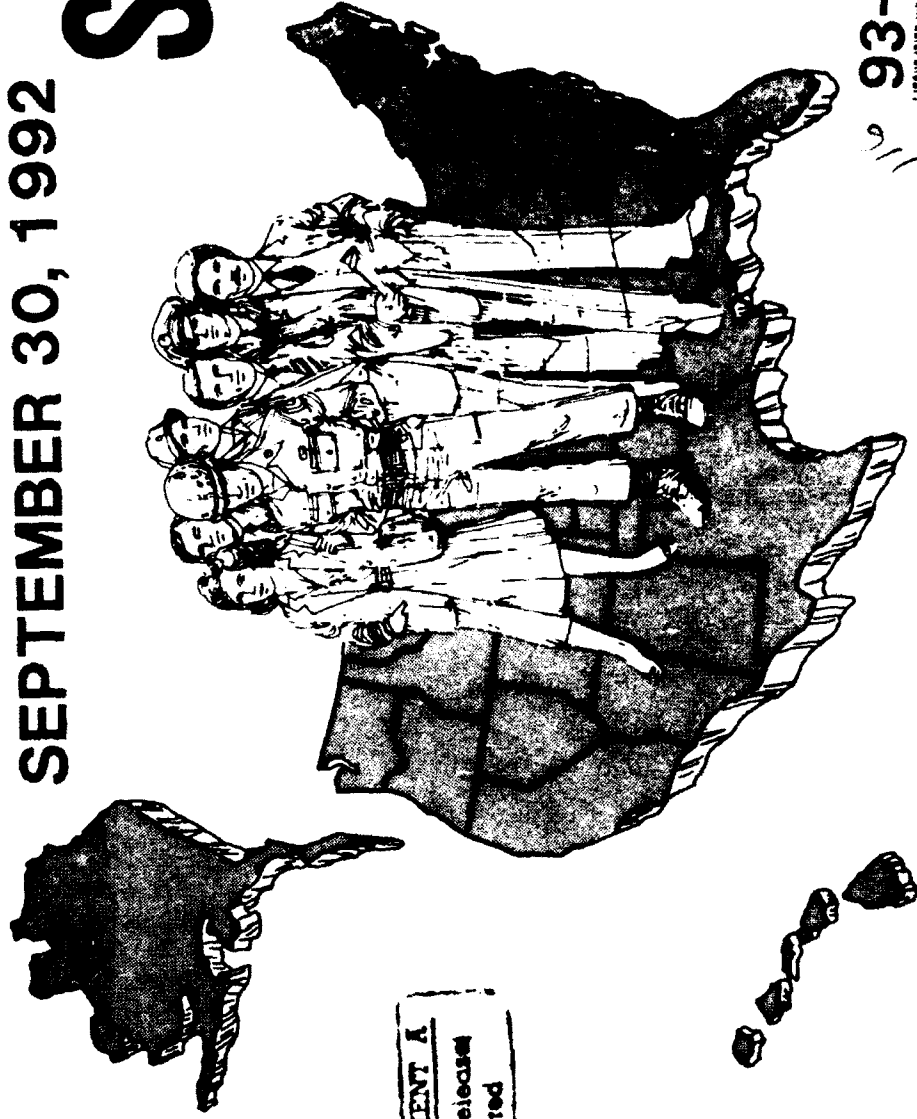
Department of Defense

DISTRIBUTION OF PERSONNEL BY STATE AND BY SELECTED LOCATIONS

SD 1201-201-02 TWECO-DEFENSE NEWS

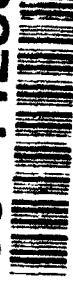
SEPTEMBER 30, 1992

DTIC
ELECTE
MAY 24 1993
S C D



DISTRIBUTION STATEMENT A
Approved for public release
Distribution Unlimited

93-11285



5 00 00 5

12
M02

DEPARTMENT of DEFENSE

DISTRIBUTION OF PERSONNEL BY STATE AND BY SELECTED LOCATIONS

September 30, 1992

DTIC QUALITY INSPECTED 8

*Issued Annually by
Washington Headquarters Services
Directorate for Information
Operations and Reports*

For Sale by the Superintendent of Documents
U.S. Government Printing Office, Washington, D.C. 20402

DTIC AND NTIS IDENTIFICATION NUMBER FOR THIS PUBLICATION IS DIOR/M02-92

Accession For	
NTIS	<input checked="" type="checkbox"/> CRA&I
DTIC	<input type="checkbox"/> TAB
Unannounced	<input type="checkbox"/>
Justification	
By	
Distribution /	
Availability Codes	
Dist	Avail and/or Special
A-1	

FOREWORD

Distribution of Personnel by State and by Selected Locations is published annually by the Office of the Secretary of Defense, Washington Headquarters Services, Directorate for Information Operations and Reports (WHS/DIOR).

This report provides information on Department of Defense (DoD) personnel by operating location as of September 30, 1992. This information is provided in two sections showing:

1. The percent distribution of DoD active duty military and direct hire civilian personnel, by state, according to Defense component; and
2. DoD active duty military and direct hire civilian personnel, by installation or selected city, according to Defense component.

TABLE OF CONTENTS

INTRODUCTION.....	1
SECTION 1. Percent distribution of DoD Active Duty Military and Direct Hire Civilian Personnel, by State, According to Defense Component: September 30, 1992.....	3
SECTION 2. DoD Active Duty Military and Direct Hire Civilian Personnel, by Installation or City, According to Defense Component: September 30, 1992.....	11
Alabama.....	13
Alaska.....	14
Arizona.....	15
Arkansas.....	16
California.....	17
Colorado.....	21
Connecticut.....	22
Delaware.....	23
District of Columbia.....	24
Florida.....	25
Georgia.....	27
Hawaii.....	29
Idaho.....	30
Illinois.....	31
Indiana.....	32
Iowa.....	33
Kansas.....	34
Kentucky.....	35
Louisiana.....	36

Maine.....	37
Maryland.....	38
Massachusetts.....	40
Michigan.....	41
Minnesota.....	42
Mississippi.....	43
Missouri.....	44
Montana.....	45
Nebraska.....	46
Nevada.....	47
New Hampshire.....	48
New Jersey.....	49
New Mexico.....	50
New York.....	51
North Carolina.....	53
North Dakota.....	54
Ohio.....	55
Oklahoma.....	56
Oregon.....	57
Pennsylvania.....	58
Rhode Island.....	59
South Carolina.....	60
South Dakota.....	61
Tennessee.....	62
Texas.....	63
Utah.....	65
Vermont.....	66
Virginia.....	67
Washington.....	70
West Virginia.....	72
Wisconsin.....	73
Wyoming.....	74
Undistributed.....	75

INTRODUCTION

This publication is prepared from information submitted annually to Washington Headquarters Services, Directorate for Information Operations and Reports (WHS/DIOR), under Reports Control Symbol DD-COMP(A) 1600. Information is reported to WHS/DIOR by the Military Departments and Defense Agencies. These data provide statistics on the number of active duty military and direct hire civilian personnel by operating location in the United States with operating location defined as the geographic location where personnel are located for the performance of work.

This report is divided into two sections. In each, the information is presented according to Defense component, including the Military Departments (Army, Navy, and Air Force) and the category "Other DoD Organizations." This latter classification includes the following:

Office of the Secretary of Defense (OSD)	On-Site Inspection Agency (OSIA)
Joint Chiefs of Staff (JCS)	Strategic Defense Initiative Organization (SDIO)
Department of Defense Inspector General (DoD IG)	American Forces Information Service (AFIS)
Advanced Research Projects Agency (ARPA)	Defense Medical Support Activity (DMSA)
Defense Commissary Agency (DeCA)	Defense Technology Security Administration (DTSA)
Defense Contract Audit Agency (DCAA)	Department of Defense Dependents Schools (DoDDS)
Defense Finance and Accounting Service (DFAS)	Office of Civilian Health and
Defense Information Services Agency (DISA)	Medical Program Office (OCHAMPUS)
Defense Investigative Service (DIS)	Office of Economic Adjustment (OEA)
Defense Legal Services Agency (DLSA)	Washington Headquarters Services (WHS)
Defense Logistics Agency (DLA)	U.S. Court of Military Appeals
Defense Mapping Agency (DMA)	Uniformed Services University
Defense Nuclear Agency (DNA)	of the Health Sciences (USUHS)
Defense Security Assistance Agency (DSAA)	

In Section One, the total number of active duty military and direct hire civilian personnel as of September 30, 1992, are presented by state according to Defense component. Included is information on the percentage of each component's personnel located in each state. In Section Two, the active duty military and direct hire civilian personnel are shown for selected cities and installations in each state according to Defense component.

Special attention is directed to the following:

1. In some instances, the Military Departments report personnel by parent installation rather than their operating location. Such variations tend to occur in metropolitan areas where military activities are scattered among many political jurisdictions. In addition, personnel on temporary duty (TDY) on September 30, 1992, may be reported at their assigned locations.
2. Military personnel in each department include a number of personnel in a transient status. These personnel are in a travel, proceed, leave en route, or temporary duty status while on permanent change of station (PCS) orders. Personnel reported in this category, entitled "Undistributed," also include personnel for which an exact location is undetermined or classified.
3. Excluded from the direct hire civilian personnel in this publication are those who are not subject to Office of Management and Budget (OMB) ceiling controls. This includes personnel such as summer aids, employees in the Stay-in-School Federal Junior Fellowship and Worker-Trainee Opportunity Programs, and those covered by other official exemptions granted by OMB. As of September 30, 1992, the Department of Defense employed 10,784 nonceiling civilian employees.
4. Department of the Army direct hire civilian personnel subject to OMB ceilings include employees involved in civil functions in the United States. This consisted of 29,338 employees of the Army Corps of Engineers and 135 Army cemeterial employees. Also included in this report is one civil function personnel of the Air Force.
5. Department of the Navy military personnel include those in the military services of the Navy and Marine Corps. The Navy Department military totals consist of shore-based personnel and exclude those personnel who are afloat (206,526) and temporary shore-based (45,301).

Further information on DoD personnel can be found in the WHS/DIOR annual publications *Selected Manpower Statistics (M01)* and *Atlas/Data Abstract for the United States and Selected Areas (L03)*, and the quarterly publications *Worldwide Manpower Distribution by Geographical Area (M05)*, *Civilian Manpower Statistics (M04)*, and *Military Manpower Statistics (M03)*.

SECTION 1

PERCENT DISTRIBUTION OF DoD ACTIVE DUTY MILITARY AND DIRECT HIRE CIVILIAN

PERSONNEL, ACCORDING TO DEFENSE COMPONENT: SEPTEMBER 30, 1992

Percent Distribution of DoD Active Duty Military and Direct Hire Civilian Personnel By State, According to Defense Component: SEPTEMBER 30, 1992

STATE	TYPE OF PERSONNEL	1990 CENSUS #1		ARMY #2		NAVY #3		AIR FORCE		OTHER DoD ORGANIZATIONS		TOTAL DEPARTMENT OF DEFENSE	
		NUMBER	PCT. U.S.	NUMBER	PCT. USA	NUMBER	PCT. USN	NUMBER	PCT. USAF	NUMBER	PCT. ODA	NUMBER	PCT. DoD
Alabama	MILITARY	11,835	2.6	956	2.6	2	2	4,798	1.3	1,658	1.3	17,589	1.4
	CIVILIAN	21,152	7.2	2,204	7.2	1	1	2,962	1.5	1,658	1.3	26,020	2.9
	TOTAL	32,987	4.4	1,204	4.4	2	2	7,760	1.3	1,658	1.3	43,609	2.0
Alaska	MILITARY	9,456	2.1	1,979	2.1	5	5	10,773	2.8	276	2	22,208	1.8
	CIVILIAN	2,464	1.8	2,250	1.8	1	1	1,707	1.9	276	2	4,697	1.5
	TOTAL	11,920	1.6	2,229	1.6	3	3	12,480	2.2	276	2	26,905	1.3
Arizona	MILITARY	5,637	1.2	5,589	1.2	1.4	1.4	10,798	2.8	1,035	1.8	22,024	1.8
	CIVILIAN	4,439	1.5	4,445	1.5	2	2	3,845	2.0	1,035	1.8	9,764	1.1
	TOTAL	10,076	1.4	6,034	1.4	9	9	14,643	2.5	1,035	1.8	31,788	1.5
Arkansas	MILITARY	1,336	3	249	3	1	1	5,000	1.3	147	1	6,585	5
	CIVILIAN	3,297	1.1	17	1.1	0	0	1,037	1.5	147	1	4,498	5
	TOTAL	4,633	1.6	266	1.6	0	0	6,037	1.0	147	1	11,083	5
California	MILITARY	24,208	5.3	115,009	5.3	27.9	27.9	38,944	10.2	14,174	11.3	178,161	14.3
	CIVILIAN	14,010	4.8	67,702	4.8	23.8	23.8	24,055	12.2	14,174	11.3	119,941	13.3
	TOTAL	38,218	5.1	182,711	5.1	26.2	26.2	62,999	10.9	14,174	11.3	298,102	13.9
Colorado	MILITARY	18,710	4.1	888	4.1	2	2	18,114	4.7	3,428	2.7	37,712	3.0
	CIVILIAN	4,875	1.7	77	1.7	0	0	5,634	2.9	3,428	2.7	14,014	1.6
	TOTAL	23,585	3.2	965	3.2	1	1	23,748	4.1	3,428	2.7	51,726	2.4
Connecticut	MILITARY	28	0	6,337	0	1.5	1.5	101	0	1,149	0.9	6,466	5
	CIVILIAN	571	2	2,846	2	1.0	1.0	268	1	1,149	0.9	4,834	5
	TOTAL	599	1.1	9,183	1.1	1.3	1.3	369	1	1,149	0.9	11,300	5
Delaware	MILITARY	27	0	32	0	0	0	4,347	1.1	103	1	4,406	4
	CIVILIAN	218	1	5	1	0	0	1,447	1.7	103	1	1,773	2
	TOTAL	245	0	37	0	0	0	5,794	1.0	103	1	6,179	3
District of Col	MILITARY	5,447	1.2	4,862	1.2	1.2	1.2	3,822	1.0	559	4	14,131	1.1
	CIVILIAN	6,356	2.2	8,638	2.2	3.0	3.0	1,215	1.6	559	4	16,768	1.9
	TOTAL	11,803	1.6	13,500	1.6	1.9	1.9	5,037	1.9	559	4	30,899	1.4

*1 The Bureau of Census data used herein are the 1990 Census data which contains both military and civilian personnel.
 *2 Army includes Civil Functions.
 *3 Navy excludes temporary shore based and afloat. Includes Marine Corps.

Prepared by: Washington Headquarters Services
 Directorate for Information Operations and Reports

Percent Distribution of DoD Active Duty Military and Direct Hire Civilian Personnel By State, According to Defense Component: SEPTEMBER 30, 1992

STATE	TYPE OF PERSONNEL	1990 CENSUS *1		ARMY *2		NAVY *3		AIR FORCE		OTHER DoD ORGANIZATIONS		TOTAL DEPARTMENT OF DEFENSE	
		NUMBER	PCT. U.S.	NUMBER	PCT. USA	NUMBER	PCT. USN	NUMBER	PCT. USAF	NUMBER	PCT. ODA	NUMBER	PCT. DoD
Florida	MILITARY	2,211	5	40,393	9.8	32,237	8.4	2,580	2.1	74,841	6.0	32,349	3.6
	CIVILIAN	2,059	7	18,256	6.4	9,454	4.8	2,580	2.1	32,349	3.6	107,190	5.0
	TOTAL	4,270	6	58,649	8.4	41,691	7.2	3,829	3.0	60,808	4.9	37,255	4.1
Georgia	MILITARY	47,882	10.6	5,342	1.3	7,584	2.0	3,829	3.0	60,808	4.9	37,255	4.1
	CIVILIAN	14,307	4.9	4,942	1.7	14,177	7.2	3,829	3.0	37,255	4.1	98,063	4.6
	TOTAL	62,189	8.3	10,284	1.5	21,761	3.8	643	5	44,864	3.6	17,893	2.0
Hawaii	MILITARY	18,666	4.1	21,266	5.2	4,932	1.3	643	5	44,864	3.6	62,757	2.9
	CIVILIAN	4,933	1.7	10,886	3.8	1,431	7	643	5	17,893	2.0	62,757	2.9
	TOTAL	23,599	3.2	32,152	4.6	6,363	1.1	643	5	62,757	2.9	4,744	4
Idaho	MILITARY	23	0	1,158	3	3,565	9	64	1	4,744	4	1,525	2
	CIVILIAN	626	2	67	0	768	4	64	1	1,525	2	6,269	3
	TOTAL	649	1	1,223	2	4,333	7	64	1	6,269	3	29,793	2.4
Illinois	MILITARY	1,213	3	17,448	4.2	11,132	2.9	1,571	1.2	29,793	2.4	19,264	2.1
	CIVILIAN	10,712	3.7	2,161	8	4,820	2.5	1,571	1.2	19,264	2.1	49,057	2.3
	TOTAL	11,925	1.6	19,609	2.8	15,952	2.7	3,604	2.9	49,057	2.3	5,322	4
Indiana	MILITARY	2,513	6	589	1	2,220	6	3,604	2.9	15,665	1.7	15,665	1.7
	CIVILIAN	3,411	1.2	7,370	2.6	1,280	7	3,604	2.9	15,665	1.7	20,987	1.0
	TOTAL	5,924	1.8	7,959	1.1	3,500	6	3,604	2.9	20,987	1.0	417	0
Iowa	MILITARY	199	0	70	0	148	0	133	1	417	0	1,542	2
	CIVILIAN	871	3	5	0	533	3	133	1	1,542	2	1,959	1
	TOTAL	1,070	1.1	75	0	681	1	133	1	1,959	1	21,326	1.7
Kansas	MILITARY	17,622	3.9	305	1	3,399	9	525	4	21,326	1.7	6,752	8
	CIVILIAN	4,876	1.7	198	1	1,153	6	525	4	6,752	8	28,078	1.3
	TOTAL	22,498	3.0	503	1	4,552	8	1,989	1.6	28,078	1.3	34,812	2.8
Kentucky	MILITARY	34,134	7.5	333	1	345	1	1,989	1.6	34,812	2.8	14,151	1.6
	CIVILIAN	9,369	3.2	2,576	9	217	9	1,989	1.6	14,151	1.6	48,963	2.3
	TOTAL	43,503	5.8	2,909	4	562	1	1,989	1.6	48,963	2.3		

*1 The Bureau of Census data used herein are the 1990 Census data which contains both military and civilian personnel.

*2 Army includes Civil Functions.

*3 Navy excludes temporary shore based and afloat. Includes Marine Corps.

Prepared by: Washington Headquarters Services
Directorate for Information Operations and Reports

Percent Distribution of DoD Active Duty Military and Direct Hire Civilian Personnel By State, According to Defense Component: SEPTEMBER 30, 1992

STATE	TYPE OF PERSONNEL	1990 CENSUS #1		ARMY #2		NAVY #3		AIR FORCE		OTHER DoD ORGANIZATIONS		TOTAL DEPARTMENT OF DEFENSE	
		NUMBER	PCT. U.S.	NUMBER	PCT. USA	NUMBER	PCT. USN	NUMBER	PCT. USAF	NUMBER	PCT. ODA	NUMBER	PCT. DoD
Louisiana	MILITARY	13,463	3.0	1,727	4	6,452	1.7	507	4	21,642	1.7		
	CIVILIAN	4,493	1.5	2,001	0.7	2,003	1.0	507	4	9,004	1.0		
	TOTAL	17,956	2.4	3,723	0.5	8,455	1.5	507	4	30,646	1.4		
Maine	MILITARY	192	0	1,771	4	2,721	7	186	1	4,684	4		
	CIVILIAN	354	1	7,014	2.5	793	4	186	1	8,347	5		
	TOTAL	546	1	8,785	1.3	3,514	6	186	1	13,031	6		
Maryland	MILITARY	11,161	2.5	15,217	3.7	5,947	1.6	5,794	4.6	32,325	2.6		
	CIVILIAN	16,476	5.6	15,867	5.6	2,357	1.2	5,794	4.6	40,494	4.5		
	TOTAL	27,637	3.7	31,084	4.5	8,304	1.4	5,794	4.6	72,819	3.4		
Massachusetts	MILITARY	3,726	8	937	2	2,516	7	1,992	1.6	7,179	6		
	CIVILIAN	4,434	1.5	742	0.3	3,898	2.0	1,992	1.6	11,066	1.2		
	TOTAL	8,160	1.1	1,679	0.2	6,414	1.1	1,992	1.6	18,245	1.8		
Michigan	MILITARY	661	1	555	1	5,317	1.4	1,942	1.5	6,533	5		
	CIVILIAN	6,927	2.4	125	0	2,072	1.1	1,942	1.3	11,066	1.2		
	TOTAL	7,588	1.0	680	0.1	7,389	1.3	1,942	1.5	17,599	1.8		
Minnesota	MILITARY	293	1	358	1	248	1	500	4	899	3		
	CIVILIAN	1,553	5	34	0	824	4	500	4	2,911	3		
	TOTAL	1,846	2	392	0.1	1,072	2	500	4	3,810	2		
Mississippi	MILITARY	261	1	3,037	7	9,035	2.4	343	3	12,333	1.0		
	CIVILIAN	4,864	1.7	2,936	1.0	2,870	1.5	343	3	11,013	1.2		
	TOTAL	5,125	1.7	5,973	0.9	11,905	2.1	343	3	23,346	1.1		
Missouri	MILITARY	10,883	4.4	791	2	3,599	9	4,771	3.8	15,273	1.2		
	CIVILIAN	11,760	4.0	469	0.2	1,325	0.7	4,771	3.8	18,325	2.0		
	TOTAL	22,643	3.0	1,260	0.2	4,924	0.8	4,771	3.8	33,598	1.6		
Montana	MILITARY	28	0	20	0	4,399	1.1	67	1	4,447	4		
	CIVILIAN	408	1	1	0	1,771	4	67	1	1,247	1		
	TOTAL	436	1	21	0	5,170	9	67	1	5,694	3		

*1 The Bureau of Census data used herein are the 1990 Census data which contains both military and civilian personnel.

*2 Army includes Civil Functions.

*3 Navy excludes temporary shore based and afloat.

Includes Marine Corps.

Prepared by: Washington Headquarters Services
Directorate for Information Operations and Reports

Percent Distribution of DoD Active Duty Military and Direct Hire Civilian Personnel By State, According to Defense Component: SEPTEMBER 30, 1992

STATE	TYPE OF PERSONNEL	1990 CENSUS *1		ARMY *2		NAVY *3		AIR FORCE		OTHER DoD ORGANIZATIONS		TOTAL DEPARTMENT OF DEFENSE	
		NUMBER	PCT. U.S.	NUMBER	PCT. USA	NUMBER	PCT. USN	NUMBER	PCT. USAF	NUMBER	PCT. ODA	NUMBER	PCT. DoD
Nebraska	MILITARY	79	0	426	1	10,002	2.6	104	1	0,507	8		
	CIVILIAN	1,965	7	44	0	1,646	8	104	1	3,759	4		
	TOTAL	2,044	3	470	1	11,648	2.0	104	1	14,266	7		
Nevada	MILITARY	14	0	956	2	6,772	1.8	152	1	7,742	6		
	CIVILIAN	275	1	352	1	1,306	7	152	1	2,085	2		
	TOTAL	289	0	1,308	2	8,078	1.4	152	1	9,827	5		
New Hampshire	MILITARY	17	0	195	0	151	0	173	0	363	0		
	CIVILIAN	589	2	322	1	309	2	173	1	1,393	2		
	TOTAL	606	1	517	1	460	1	173	1	1,756	1		
New Jersey	MILITARY	3,875	9	1,308	3	4,407	1.1	1,454	1.2	9,590	8		
	CIVILIAN	15,067	5.1	6,204	2.2	1,961	1.0	1,454	1.2	24,686	2.7		
	TOTAL	18,942	2.5	7,512	1.1	6,368	1.1	1,454	1.2	34,276	1.6		
New Mexico	MILITARY	1,025	2	482	1	13,880	3.6	755	6	15,387	1.2		
	CIVILIAN	4,416	1.5	194	1	3,823	1.9	755	6	9,188	1.0		
	TOTAL	5,441	7	676	1	17,703	3.1	755	6	24,575	1.1		
New York	MILITARY	13,635	3.0	3,128	8	6,979	1.8	2,699	2.1	23,742	1.9		
	CIVILIAN	9,857	3.4	657	2	4,619	2.3	2,699	2.1	17,832	2.0		
	TOTAL	23,492	3.2	3,785	5	11,598	2.0	2,699	2.1	41,574	1.9		
North Carolina	MILITARY	42,902	9.5	42,404	10.3	9,646	2.5	2,219	1.8	94,952	7.6		
	CIVILIAN	6,771	2.3	6,938	2.4	1,218	6	2,219	1.8	17,146	1.9		
	TOTAL	49,673	6.7	49,342	7.1	10,864	1.9	2,219	1.8	112,098	5.2		
North Dakota	MILITARY	28	0	8	0	9,650	2.5	107	1	9,684	8		
	CIVILIAN	408	1	1	0	1,352	1	107	1	1,868	2		
	TOTAL	434	1	9	0	11,002	1.9	107	1	11,552	5		
Ohio	MILITARY	596	1	890	2	9,402	2.5	13,187	10.5	10,888	9		
	CIVILIAN	1,933	7	218	1	19,341	9.8	13,187	10.5	34,679	3		
	TOTAL	2,529	3	1,108	2	28,743	5.0	13,187	10.5	45,567	2		

*1 The Bureau of Census data used herein are the 1990 Census data which contains both military and civilian personnel.

*2 Army includes Civil Functions.

*3 Navy excludes temporary shore based and afloat. Includes Marine Corps.

Prepared by: Washington Headquarters Services
Directorate for Information Operations and Reports

Percent Distribution of DoD Active Duty Military and Direct Hire Civilian Personnel By State, According to Defense Component: SEPTEMBER 30, 1992

STATE	1990 CENSUS #1		ARMY #2		NAVY #3		AIR FORCE		OTHER DoD ORGANIZATIONS		TOTAL DEPARTMENT OF DEFENSE	
	NUMBER	PCT. U.S.	NUMBER	PCT. USA	NUMBER	PCT. USN	NUMBER	PCT. USAF	NUMBER	PCT. ODA	NUMBER	PCT. DoD
Oklahoma	3,157,604	1.3	16,231 5,794 22,025	3.6 2.0 3.0	642 169 811	.2 .1 .1	11,403 14,355 29,758	3.0 7.3 4.4	1,554 1,554	1.2 1.2	28,276 21,872 50,148	2.3 2.4 2.3
Oregon	2,853,733	1.1	185 2,119 2,304	.0 .7 .3	465 27 492	.1 .0 .1	398 721 1,119	1.1 4.4 2.2	43 43	.0 .0	1,048 2,910 3,958	1.1 3.3 2.2
Pennsylvania	11,924,710	4.8	1,740 12,619 14,359	.4 4.3 1.9	2,871 21,209 24,080	.7 7.5 3.5	595 1,647 2,242	2.2 8.8 4.4	13,035 13,035	10.4 10.4	5,206 48,510 53,716	4.4 5.4 2.5
Rhode Island	1,005,984	.4	48 332 378	.0 .1 .1	3,517 3,510 7,027	.9 1.2 1.0	151 253 404	.0 .1 .1	146 146	.1 .1	3,714 4,241 7,955	3.3 5.5 4.4
South Carolina	3,505,707	1.4	11,879 3,028 14,907	2.6 1.0 2.0	16,263 11,326 27,589	3.9 4.0 4.0	10,979 2,092 13,071	2.9 1.1 2.3	1,196 1,196	1.0 1.0	39,121 17,642 56,763	3.1 2.0 2.6
South Dakota	699,999	.3	32 501 533	.0 .2 .1	6 6	.0 .0 .0	6,090 710 6,800	1.6 4.4 1.2	77 77	.1 .1	6,128 1,288 7,416	5.5 1.1 3.3
Tennessee	4,896,641	2.0	357 2,756 3,113	.1 .9 .4	7,513 1,102 8,615	1.8 .4 1.2	499 1,032 1,531	1.1 5.5 3.3	2,674 2,674	2.1 2.1	8,369 7,564 15,933	7.7 8.8 7.7
Texas	17,059,805	6.8	56,851 22,687 79,538	12.6 7.7 10.7	6,199 2,187 8,386	1.5 .8 1.2	45,763 26,820 72,583	11.9 13.6 12.5	6,458 6,458	5.1 5.1	108,813 58,152 166,965	8.7 6.5 7.8
Utah	1,727,784	.7	547 4,543 5,090	.1 1.6 1.7	114 92 206	.0 .0 .0	4,972 11,679 16,651	1.3 5.9 2.9	3,557 3,557	2.8 2.8	5,633 19,871 25,504	5.5 2.2 1.2

*1 The Bureau of Census data used herein are the 1990 Census data which contains both military and civilian personnel.
 *2 Army includes Civil Functions.
 *3 Navy excludes temporary shore based and afloat. Includes Marine Corps.

Prepared by: Washington Headquarters Services
 Directorate for Information Operations and Reports

Percent Distribution of DoD Active Duty Military and Direct Hire Civilian Personnel By State, According to Defense Component: SEPTEMBER 30, 1992

STATE	TYPE OF PERSONNEL	1990 CENSUS #1		ARMY #2		NAVY #3		AIR FORCE		OTHER DoD ORGANIZATIONS		TOTAL DEPARTMENT OF DEFENSE	
		NUMBER	PCT U.S.	NUMBER	PCT. USA	NUMBER	PCT. USN	NUMBER	PCT. USAF	NUMBER	PCT. ODA	NUMBER	PCT. DoD
Vermont	MILITARY CIVILIAN TOTAL	564,964	.2	21 311 332	.0 .1 .0	15 1 16	.0 .0 .0	105 277 382	.0 .1 .1	53 53	.0 .0	141 642 783	.0 .1 .0
Virginia	MILITARY CIVILIAN TOTAL	6,216,568	2.5	27,181 27,438 54,619	6.0 9.4 7.3	50,055 53,921 103,976	12.1 19.0 14.9	15,014 4,287 19,301	3.9 2.2 3.3	20,665 20,665	16.4 16.4	92,250 106,311 198,561	7.4 11.8 9.2
Washington	MILITARY CIVILIAN TOTAL	4,887,941	2.0	17,830 5,740 23,570	3.9 2.0 3.2	9,069 19,820 28,689	2.2 6.9 4.1	8,764 2,094 10,858	2.3 1.1 1.9	1,541 1,541	1.2 1.2	35,663 28,995 64,658	2.9 3.2 3.0
West Virginia	MILITARY CIVILIAN TOTAL	1,801,625	.7	178 1,232 1,410	.0 .4 .2	220 50 270	.1 .0 .0	142 379 521	.0 .2 .1	29 29	.0 .0	540 1,690 2,230	.0 .1 .1
Wisconsin	MILITARY CIVILIAN TOTAL	4,906,745	2.0	333 2,366 2,699	.1 .8 .4	248 74 320	.1 .0 .0	285 801 1,086	.1 .4 .2	196 196	.2 .2	864 3,437 4,301	.1 .4 .2
Wyoming	MILITARY CIVILIAN TOTAL	455,975	.2	14 207 221	.0 .1 .0	2 2	.0 .0	3,533 733 4,266	.9 .4 .7	124 124	.1 .1	3,549 1,064 4,613	.3 .1 .2
Undistributed	MILITARY CIVILIAN TOTAL		.0	15,524 15,524	3.4 2.1	18,530 18,530	4.5 2.7	1,532 290 1,822	.4 .1 .3		.0 .0	35,586 290 35,876	2.8 .0 1.7
UNITED STATES (INCL. ALASKA & HAWAII)	MILITARY CIVILIAN TOTAL	249,632,692	100.0	452,933 292,769 745,702	100.0 100.0 100.0	412,740 284,086 696,836	100.0 100.0 100.0	383,607 196,661 580,268	100.0 100.0 100.0	125,767 125,767	100.0 100.0	1,249,280 899,293 2,148,573	100.0 100.0 100.0

#1 The Bureau of Census data used herein are the 1990 Census data which contains both military and civilian personnel.
 #2 Army includes Civil Functions.
 #3 Navy excludes temporary shore based and afloat. Includes Marine Corps.

Prepared by: Washington Headquarters Services
 Directorate for Information Operations and Reports

SECTION 2

**DOD ACTIVE DUTY MILITARY AND DIRECT HIRE CIVILIAN PERSONNEL BY
INSTALLATION OR CITY, ACCORDING TO DEFENSE COMPONENT:**

SEPTEMBER 30, 1992

DoD Active Duty Military and Direct Hire Civilian Personnel
By Installation or City, According to Defense Component: September 30, 1992
Alabama

INSTALLATION/ CITY	Military Personnel				Civilian Personnel						TOTAL DEPARTMENT OF DEFENSE
	Army	Navy	Air Force	Sub- Total	Army	Navy	Air Force	Other DoD Organizations	Sub- Total		
Anniston	42			42	3,699			487	4,186	4,228	
Auburn	20	116	13	149		2			2	151	
Birmingham	24	90	92	206	218		183		661	867	
Fort McClellan	3,619	153	9	3,781	1,228	7	133		1,371	5,152	
Fort Rucker	4,660	1	32	4,693	2,745	27	207		2,979	7,672	
Gunter Annex	12		1,422	1,434	38	42	57		1,044	2,478	
Huntsville	138	66	8	212	2,083	5	153		2,271	2,483	
Maxwell AFB		57	3,093	3,150	15	13	273		1,707	4,857	
Mobile		168	7	175	1,170	109	13		1,292	1,467	
Montgomery	249	185	80	514	445	8	281		734	1,248	
Redstone Arsenal	2,590	39		2,629	8,645	29	89		8,763	11,392	
Tuscaloosa	8	4	11	23	105	1	1		107	130	
Other	473	77	31	581	761	5	62		903	1,484	
TOTAL	11,835	956	4,798	17,589	21,152	248	1,658		26,020	43,609	

Prepared by: Washington Headquarters Services
 Directorate for Information
 Operations and Reports

DoD Active Duty Military and Direct Hire Civilian Personnel
By Installation or City, According to Defense Component: September 30, 1992
Alaska

INSTALLATION/ CITY	Military Personnel			Civilian Personnel					TOTAL DEPARTMENT OF DEFENSE	
	Army	Navy	Air Force	Sub- Total	Army	Navy	Air Force	Other DoD Organizations		Sub- Total
Adak Naval Air Station		1,843	2	1,845		230		10	240	2,085
Anchorage	20	105	97	222	45	1	205	8	259	481
Clear AFS			70	70			38		39	109
Eielson AFB			2,984	2,984	3		406	31	440	3,424
Elmendorf AFB		13	6,609	6,622	346	12	1,019	75	1,452	8,074
Fort Greely	4			4	239			26	265	269
Fort Richardson	4,357		37	4,394	1,102			54	1,156	5,550
Fort Wainwright	4,585		45	4,640	628			70	698	5,338
Galena			223	223			18		18	241
King Salmon			197	197			19		19	218
Shemya AFB			508	508			1		1	509
Sleetmute	442			442						142
Other	38	18	1	57	101	7		2	110	167
TOTAL	9,456	1,979	10,773	22,208	2,464	250	1,707	276	4,697	26,905

Prepared by: Washington Headquarters Services
 Directorate for Information
 Operations and Reports

**DoD Active Duty Military and Direct Hire Civilian Personnel
By Installation or City, According to Defense Component: September 30, 1992
Arizona**

INSTALLATION/ CITY	Military Personnel				Civilian Personnel				TOTAL DEPARTMENT OF DEFENSE	
	Army	Navy	Air Force	Sub- Total	Army	Navy	Air Force	Other DoD Organizations		Sub- Total
	Davis-Monthan AFB	21	2	4,677	4,700	4	1	1,393		109
Fort Huachuca	4,895	80	17	4,992	2,839	23	2	173	3,037	8,029
Gila Bend			138	138	2		106	7	115	253
Luke AFB	16		4,447	4,463	5		1,119	91	1,215	5,678
Mesa	40		3	43	10			131	141	184
Phoenix	185	109	114	408	395	7	281	155	838	1,246
Tempe	10	2	39	51	2	1		46	49	100
Tucson		44	235	279	30	4	622	134	790	1,069
Williams AFB			1,046	1,046	2	3	317	45	367	1,413
Yuma	262	5,351	2	5,615	996	388		73	1,457	7,072
Other	208	1	80	289	154	18	5	71	248	537
TOTAL	5,637	5,589	10,798	22,024	4,439	445	3,845	1,035	9,764	31,788

Prepared by: Washington Headquarters Services
Directorate for Information
Operations and Reports

**DoD Active Duty Military and Direct Hire Civilian Personnel
By Installation or City, According to Defense Component: September 30, 1992
Arkansas**

INSTALLATION/ CITY	Military Personnel				Civilian Personnel				TOTAL DEPARTMENT OF DEFENSE		
	Army		Navy		Army		Navy				
	Army	Navy	Air Force	Sub- Total	Army	Navy	Air Force	Other DoD Organizations		Sub- Total	
Camp Jos T. Robinson			1	1	414		8			422	423
Fort Chaffee	37		6	43	614					614	657
Fort Smith		1	50	51	22		223	1		246	297
Ira Eaker AFB			404	404			98	2		100	504
Jacksonville	29		6	35			180			180	215
Little Rock	989		10	1,235	54	13	5	9		81	1,316
Little Rock AFB			4,501	4,501	30	2	503	100		635	5,136
North Little Rock	6		8	14	96	1				97	111
Pine Bluff			1	1	1,345					1,345	1,346
Other	275	4	21	300	722	1	20	35		778	1,078
TOTAL	1,336	249	5,000	6,585	3,297	17	1,037	147		4,498	11,083

Prepared by: Washington Headquarters Services
Directorate for Information
Operations and Reports

**DoD Active Duty Military and Direct Hire Civilian Personnel
By Installation or City, According to Defense Component: September 30, 1992
California**

INSTALLATION/ CITY	Military Personnel			Civilian Personnel					TOTAL DEPARTMENT OF DEFENSE		
	Army	Navy		Air Force	Sub- Total	Army	Navy	Air Force		Other DoD Organizations	Sub- Total
		11	3								
Alameda	137	1,957	11	2,105	30	4,506		392		4,928	7,033
Anaheim		3	6	9		23		182		205	214
Barstow	24	532		556	2	1,804		104		1,910	2,466
Beale AFB			3,341	3,341	1		391	49		441	3,782
Bridgeport		244		244		23				23	267
Camp Pendleton		30,084	1	30,085	33	2,104		169		2,306	32,391
Camp Roberts					243					243	243
Camp SanLuis Obispo					152		1			153	153
Castle AFB			4,113	4,113			330	66		396	4,509
China Lake NMC		987	1	988		5,080		25		5,105	6,093
Concord		476		476	1	1,802		13		1,816	2,292
Corona	8	7		15	1	1,079				1,080	1,095
Coronado		2,443		2,443		380				380	2,823
Edwards AFB	15	4	4,232	4,251	102	11	2,991	68		3,172	7,423
El Centro		287		287	4	81		6		91	378
El Segundo		1	20	21	3	2	1,270	823		2,098	2,119
El Toro		5,340	3	5,343		729		287		1,016	6,359
Fairbrook		69		69		302				302	371
Ferndale		227		227		49				49	276
Fort Hunter Liggett					188			7		195	195

Prepared by: Washington Headquarters Services
Directorate for Information
Operations and Reports

**DoD Active Duty Military and Direct Hire Civilian Personnel
By Installation or City, According to Defense Component: September 30, 1992
California**

INSTALLATION/ CITY	Military Personnel				Civilian Personnel					TOTAL DEPARTMENT OF DEFENSE
	Army	Navy	Air Force	Sub- Total	Army	Navy	Air Force	Other DoD Organizations	Sub- Total	
	Fort Irwin	4,874		28	4,902	732			52	
Fort Ord	12,454		83	12,537	1,929			97	2,026	14,563
Fresno		67	76	143	174	3	308	120	485	628
Fullerton	18	3	3	24	4	1			125	149
George AFB			1,006	1,006			466	35	501	1,507
Hawthorne	9		2	11			1	118	119	130
Huntington Beach	12		1	13	2			92	94	107
Imperial Beach		18		18		23		183	216	234
Lathrop	16	10		26	3	6		1,577	1,586	1,612
Lemoore		2,470	1	2,471		745		35	780	3,251
Long Beach	14	2,284	32	2,330	142	5,233	19	252	5,646	7,976
Los Alamitos		12		12	336	1	4		341	353
Los Angeles	270	487	2,011	2,768	679	53	56	1,025	1,813	4,581
March AFB	174	9	3,303	3,486	19		1,195	73	1,287	4,773
Mare Isl Nav Shipyd		1,278		1,278		6,830		7	6,837	8,115
Mather AFB			1,718	1,718	3	1	735	122	901	2,619
McClellan AFB			2,926	2,926	24		10,247	135	10,406	13,332
Miramar NAS		3,682	4	3,686		837		158	995	4,681
Moffett Field NAS		1,829	91	1,920	132	463	147	79	821	2,741
Monterey	2,041	2,201	127	4,369	1,216	1,285		134	2,635	7,004

Prepared by: Washington Headquarters Services
Directorate for Information
Operations and Reports

**DoD Active Duty Military and Direct Hire Civilian Personnel
By Installation or City, According to Defense Component: September 30, 1992
California**

INSTALLATION/ CITY	Military Personnel			Civilian Personnel					TOTAL DEPARTMENT OF DEFENSE		
	Army	Navy		Air Force	Sub- Total	Army	Navy	Air Force		Other DoD Organizations	Sub- Total
		1	5,571								
Mountain View		1		1	25	1			87	113	114
North Island NAS		5,571		5,571		3,638			57	3,695	8,266
Norton AFB			3,420	3,420	8	7	1,900		84	1,997	5,417
Oakland	21	2,342	23	2,386	750	4,594			593	5,937	8,323
Ontario			41	41	13		25		94	132	173
Oxnard AFB						259				259	259
Palmdale			72	72			16		73	89	161
Pasadena		20	1	21	8	4	3		77	92	113
Point Mugu PMTC		1,753	1	1,754		3,781			13	3,794	5,548
Pomona		4	1	5		101			108	209	214
Port Hueneme		1,391		1,391		4,260	258		76	4,594	5,985
Presidio of SF	1,835	1	721	2,557	1,369				105	1,474	4,031
Redondo Beach			7	7			1		145	146	153
Sacramento	699	278	26	1,003	3,365	63	20		368	3,816	4,819
San Bruno	5	21		26	2	382			137	521	547
San Clemente		148		148							148
San Diego	25	31,860	52	31,937	72	13,969	21	1,447		15,509	47,446
San Francisco	11	1,346	14	1,371	387	651	18	17		1,073	2,444
San Jose	43	34	14	91	28	3	1		143	175	266
San Nicolas Island		63		63		96				96	159

Prepared by: Washington Headquarters Services
Directorate for Information
Operations and Reports

**DoD Active Duty Military and Direct Hire Civilian Personnel
By Installation or City, According to Defense Component: September 30, 1992
California**

INSTALLATION/ CITY	Military Personnel				Civilian Personnel				TOTAL DEPARTMENT OF DEFENSE	
	Army	Navy	Air Force	Sub- Total	Army	Navy	Air Force	Other DoD Organizations		Sub- Total
Santa Ana		73	3	76	15			189	204	280
Seal Beach		177		177		953		16	969	1,146
Sierra Army Depot					766	1		24	791	791
Sierra City	326		21	347						347
Skaggs Island NSG		173		173		1			1	174
Stockton		215	2	217	166			152	544	761
Sunnyvale	3	26	734	763	6	127	225	305	663	1,426
Tracy	24	2	3	29	1			1,530	1,531	1,560
Travis AFB	20	19	7,259	7,298		3	2,022	106	2,131	9,429
Tustin		3,413		3,413		78			78	3,491
Twentynine Palms		8,241		8,241		628		45	673	8,914
Vallejo	12	584	3	599	3	6		64	73	672
Vandenberg AFB			3,208	3,208	10	1	1,233	75	1,319	4,527
Ventura		5	1	6	10	99			109	115
Other	1,118	237	177	1,532	813	314	155	1,545	2,827	4,359
TOTAL	24,208	115,009	38,944	178,161	14,010	67,702	24,055	14,174	119,941	298,102

Prepared by: Washington Headquarters Services
Directorate for Information
Operations and Reports

**DoD Active Duty Military and Direct Hire Civilian Personnel
By Installation or City, According to Defense Component: September 30, 1992
Colorado**

INSTALLATION/ CITY	Military Personnel				Civilian Personnel					TOTAL DEPARTMENT OF DEFENSE
	Army	Navy	Air Force	Sub- Total	Army	Navy	Air Force	Other DoD Organizations	Sub- Total	
Air Force Academy	6		6,969	6,975		19	1,845	36	1,700	8,675
Aurora	1,839	103	18	1,960	1,604	5		194	1,803	3,763
Boulder		25	49	74	10	1	2	17	30	104
Buckley AGB			369	369	3		375		378	747
Camp George West					104	1			105	105
Cheyenne Mtn Complex			2	2						171
Colorado Springs	192	190	1,082	1,464	104	12	301	64	481	1,945
Denver	79	429	25	533	81	15	15	2,401	2,512	3,045
Englewood			2	2	42		9		144	146
Falcon AFB			1,961	1,961		1	311		312	2,273
Fort Carson	15,767	2	90	15,859	2,125	9	11	163	2,308	18,167
Lowry AFB	330	96	4,390	4,816	12	15	1,497	98	1,622	6,438
Peterson AFB	121	40	3,029	3,190	12		1,277	94	1,383	4,573
Pueblo	4		3	7	526			14	540	547
Rocky Mountain Ars					172			3	175	175
Other	372	3	125	500	80		21	251	352	852
TOTAL	18,710	888	18,114	37,712	4,875	77	5,634	3,428	14,014	51,726

Prepared by: Washington Headquarters Services
Directorate for Information
Operations and Reports

**DoD Active Duty Military and Direct Hire Civilian Personnel
By Installation or City, According to Defense Component: September 30, 1992
Connecticut**

INSTALLATION/ CITY	Military Personnel			Civilian Personnel					TOTAL DEPARTMENT OF DEFENSE	
	Army	Navy	Air Force	Sub- Total	Army	Navy	Air Force	Other DoD Organizations		Sub- Total
East Granby					1		218	1	220	220
East Hartford			3	3				263	263	266
Groton		5,381		5,381	87	1,437		62	1,586	6,967
Hartford	7	77	4	88	132	2	8	45	187	275
New London	4	327	1	332	4	1,407		69	1,480	1,812
Stratford		22	3	25	14			329	343	368
Windsor		489		489				3	3	492
Windsor Locks			64	64	170			97	267	331
Other	17	41	26	84	163		42	280	485	569
TOTAL	28	6,337	101	6,466	571	2,848	268	1,149	4,834	11,300

Prepared by: Washington Headquarters Services
Directorate for Information
Operations and Reports

**DoD Active Duty Military and Direct Hire Civilian Personnel
By Installation or City, According to Defense Component: September 30, 1992
Delaware**

INSTALLATION/ CITY	Military Personnel				Civilian Personnel				TOTAL DEPARTMENT OF DEFENSE	
	Army	Navy	Air Force	Sub- Total	Army	Navy	Air Force	Other DoD Organizations		Sub- Total
	Dover AFB			4,265	4,265	1		1,280		83
New Castle Newport			71	71	124		164		124	124
Other	27	32	11	70	93	5	3	20	121	191
TOTAL	27	32	4,347	4,406	218	5	1,447	103	1,773	6,179

Prepared by: Washington Headquarters Services
Directorate for Information
Operation and Reports

**DoD Active Duty Military and Direct Hire Civilian Personnel
By Installation or City, According to Defense Component: September 30, 1992
District of Columbia**

INSTALLATION/ CITY	Military Personnel				Civilian Personnel				TOTAL DEPARTMENT OF DEFENSE	
	Army	Navy	Air Force	Sub- Total	Army	Navy	Air Force	Other DoD Organizations		Sub- Total
Bolling AFB	126		2,100	2,226		3	1,096	132	1,231	3,457
Fort McNair			171	171	4			111	115	286
Washington	5,321	4,862	1,551	11,734	6,352	8,635	119	316	15,422	27,156
Other										
TOTAL	5,447	4,862	3,822	14,131	6,356	8,638	1,215	559	16,768	30,899

Prepared by Washington Headquarters Services
Directorate for Information
Operations and Reports

DoD Active Duty Military and Direct Hire Civilian Personnel
By Installation or City, According to Defense Component: September 30, 1992
Florida

INSTALLATION/ CITY	Military Personnel				Civilian Personnel				TOTAL DEPARTMENT OF DEFENSE	
	Army	Navy	Air Force	Sub- Total	Army	Navy	Air Force	Other DoD Organizations		Sub- Total
Avon Park			116	116	28		93	6	127	243
Camp Blanding			22	22	182		6		188	210
Cape Canaveral		178		178	20	88		16	124	302
Cape Canaveral AFS	100		237	337	7		241		248	585
Cecil Field NAS	19	3,305	2	3,326		513		23	536	3,862
Clearwater		3	5	8		3		104	107	115
Crestview					1		347		348	348
Eglin AFB	160	147	8,988	9,275	52	35	3,973	120	4,180	13,455
Eglin Aux Fld 9		7	6,062	6,069	7		393	54	454	6,523
Fort Lauderdale		78	1	79	12	34	1	23	70	149
Gainesville		150	30	180	8	2	2	3	15	195
Homestead		204	1	205		1			1	206
Homestead AFB			3,278	3,278	3	41	890	55	989	4,267
Jacksonville	123	5,947	99	6,169	741	4,948	288	300	6,277	12,446
Key West	80		185	265	4			24	28	293
Key West NAS		1,439		1,439		532	2		534	1,973
MacDill AFB	754	458	4,910	6,122	8		937	192	1,137	7,259
Mayport		3,079		3,079		836		47	883	3,962
Melbourne	14		94	108	10	2	6	34	52	160
Miami	19	175	22	216	87	10	5	9	111	327

Prepared by: Washington Headquarters Services
 Directorate for Information
 Operations and Reports

Florida
DoD Active Duty Military and Direct Hire Civilian Personnel
By Installation or City, According to Defense Component: September 30, 1992

INSTALLATION/ CITY	Military Personnel			Civilian Personnel				TOTAL DEPARTMENT OF DEFENSE		
	Army	Navy	Air Force	Sub- Total	Army	Navy	Air Force		Other DoD Organizations	Sub- Total
Milton		1,709		1,709		224		15	239	1,948
Orlando	22	15,672	28	15,722	66	2,040	2	423	2,531	18,253
Panama City	12	644	2	658	66	1,336	1	4	1,407	2,065
Patrick AFB		16	3,017	3,033	10		1,176	110	1,296	4,329
Pensacola	17	6,978	7	7,002	28	7,480	6	373	7,887	14,889
Saint Augustine	8	3	1	12	182		11	36	229	241
Saint Petersburg	6		4	10	26			66	92	102
Taft	286			286						286
Tallahassee	69	45	49	163	30	1	1	7	39	202
Tampa	47	57	206	310	90	46	2	31	169	479
Tyndall AFB		4	4,825	4,829	5		1,021	70	1,096	5,925
Warrington	112			112						112
West Palm Beach		6	9	15	20	48	2	124	194	209
Other	363	89	57	509	366	36	48	311	761	1,270
TOTAL	2,211	40,393	32,237	74,841	2,059	18,256	9,454	2,580	32,349	107,190

Prepared by: Washington Headquarters Services
 Directorate for Information
 Operations and Reports

**DoD Active Duty Military and Direct Hire Civilian Personnel
By Installation or City, According to Defense Component: September 30, 1992**

Georgia

INSTALLATION/ CITY	Military Personnel				Civilian Personnel				TOTAL DEPARTMENT OF DEFENSE	
	Army	Navy	Air Force	Sub- Total	Army	Navy	Air Force	Other DoD Organizations		Sub- Total
	Albany	3	1,128	18	1,149	17	2,649			302
Athens	31	359	11	401	10	66		19	95	496
Atlanta	325	154	55	534	557	27	38	44	666	1,200
Columbus	168	2		170	24			8	32	202
Dahlonaga	179			179	36			2	38	217
Dobbins ARB			170	170	47		797		844	1,014
East Point	58			58	64				64	122
Forest Park					737			105	842	842
Fort Benning	15,030	27	68	15,125	3,641	24		645	4,310	19,435
Fort Gordon	7,920	118	36	8,074	2,614	12		101	2,727	10,801
Fort McPherson	1,840	11	58	1,909	2,517	13	7	28	2,565	4,474
Fort Stewart	17,051		61	17,112	2,187	5		394	2,586	19,698
Hunter Army Airfield	4,816		28	4,844	397		8	49	454	5,298
Kings Bay		2,883		2,883	3	1,860		32	1,895	4,778
Macon		136	15	151	32	10	19	2	63	214
Marietta		451	28	479	58	176	91	659	984	1,463
Moody AFB			3,027	3,027			400	47	447	3,474
Robins AFB		2	3,837	3,839	13	35	12,522	1,237	13,807	17,646
Savannah		45	125	170	714	36	227	9	986	1,156

Prepared by: Washington Headquarters Services
Directorate for Information
Operations and Reports

**DoD Active Duty Military and Direct Hire Civilian Personnel
By Installation or City, According to Defense Component: September 30, 1992**

Georgia

INSTALLATION/ CITY	Military Personnel				Civilian Personnel				TOTAL DEPARTMENT OF DEFENSE	
	Army	Navy	Air Force	Sub- Total	Army	Navy	Air Force	Other DoD Organizations		Sub- Total
	Other	461	26	47	534	639	29	68		146
TOTAL	47,882	5,342	7,584	60,808	14,307	4,942	14,177	3,829	37,255	
										1,416
										98,063

Prepared by: Washington Headquarters Services
Directorate for Information
Operations and Reports

**DoD Active Duty Military and Direct Hire Civilian Personnel
By Installation or City, According to Defense Component: September 30, 1992**

Hawaii

INSTALLATION/ CITY	Military Personnel				Civilian Personnel					TOTAL DEPARTMENT OF DEFENSE
	Army	Navy	Air Force	Sub- Total	Army	Navy	Air Force	Other DoD Organizations	Sub- Total	
Aiea	284	361	3	648		210		28	238	886
Barbers Point NAS		1,260	42	1,302	13	334		20	367	1,669
Camp H.M. Smith		574	225	799						799
Ford Island	120	212		332	1	35			36	368
Fort Shafter	1,210			1,210	1,682		22		1,704	2,914
Hickam AFB		9	3,800	3,809	50	3	1,274	133	1,460	5,269
Honolulu		303	24	327	211	28	12	61	312	639
Kailua		134		134				17	17	151
Kaneohe		7,841		7,841	23	522		73	618	8,459
Kapalama					109				109	109
Kauai Island		128	3	131		122			122	253
Kunia	125	280		405	47				47	452
Lualualei		209		209	18	274			292	501
Pearl Harbor		9,354	110	9,464	72	9,195		126	9,393	18,857
Schofield Barracks	14,910		17	14,927	967	4		95	1,066	15,993
Tripler Army Med Ctr	1,900			1,900	1,220				1,220	3,120
Wahiawa		580		580	5	139		2	146	726
Wheeler AFB	68	19	606	693	262	2	116	35	415	1,108
Other	49	2	102	153	253	18	29	31	331	484
TOTAL	18,666	21,266	4,932	44,864	4,933	10,886	1,431	643	17,893	62,757

Prepared by: Washington Headquarters Services
Directorate for Information
Operations and Reports

**DoD Active Duty Military and Direct Hire Civilian Personnel
By Installation or City, According to Defense Component: September 30, 1992**

Idaho

INSTALLATION/ CITY	Military Personnel			Civilian Personnel				TOTAL DEPARTMENT OF DEFENSE		
	Army	Navy	Air Force	Sub- Total	Army	Navy	Air Force		Other DoD Organizations	Sub- Total
	Boise	5	20	220	245	477	1		336	5
Idaho Falls		1,087		1,087	10	17		1	28	1,115
Mountain Home AFB		1	3,281	3,282	2		430	51	483	3,765
Other	18	48	64	130	137	49	2	7	195	325
TOTAL	23	1,156	3,565	4,744	626	67	768	64	1,525	6,269

Prepared by: Washington Headquarters Services
Directorate for Information
Operations and Reports

**DoD Active Duty Military and Direct Hire Civilian Personnel
By Installation or City, According to Defense Component: September 30, 1992**

Illinois

INSTALLATION/ CITY	Military Personnel				Civilian Personnel					TOTAL DEPARTMENT OF DEFENSE	
	Army	Navy		Air Force	Sub- Total	Army	Navy	Air Force	Other DoD Organizations		Sub- Total
		9	203								
Champaign	10	9	3	22	380	1				381	403
Chanute AFB		203	3,976	4,179		6	667	46		719	4,898
Chicago	32	80	38	148	467	17	684	621		1,789	1,937
Forest Park	40	4		44	56	1				57	101
Fort Sheridan	495	1	1	497	704	1		44		749	1,246
Glenview		537	2	539	58	243		1		302	841
Granite City	20		1	21	206	1		79		286	307
Great Lakes	83	16,327	37	16,447	2	1,802		80		1,884	18,331
Peoria	21	11	66	98	91		249	3		343	441
Rock Island	150	91	14	255	7,070	49		50		7,169	7,424
Savanna Army Depot					489			1		490	490
Scott AFB	114	96	6,770	6,980	67	26	2,949	449		3,491	10,471
Springfield	28		62	88	285		258	1		524	612
Other	222	89	164	475	857	14	13	186		1,080	1,555
TOTAL	1,213	17,448	11,132	28,793	10,712	2,161	4,820	1,571		19,264	49,057

Prepared by: Washington Headquarters Services
Directorate for Information
Operations and Reports

**DoD Active Duty Military and Direct Hire Civilian Personnel
By Installation or City, According to Defense Component: September 30, 1992
Indiana**

INSTALLATION/ CITY	Military Personnel				Civilian Personnel				TOTAL DEPARTMENT OF DEFENSE	
	Army		Air Force		Navy		Other DoD Organizations			Sub- Total
	Army	Navy	Air Force	Sub- Total	Army	Navy	Air Force	Other DoD Organizations		
Crane		73	1	74	733	3,995		23	4,751	4,825
Edinburgh			16	16	113		2		115	131
Ft Benjamin Harrison	2,025	49	68	2,142	1,375		1	598	1,974	4,116
Fort Wayne		12	63	75	21		262	86	369	444
Grissom AFB			1,878	1,878	21		773	43	837	2,715
Indianapolis	150	364	48	562	437	3,367	14	2,692	6,510	7,072
Jefferson Prov Grnd			10	10	350				350	360
South Bend	18	16	3	37	31		1	44	76	113
Terre Haute		4	60	64	11		216	1	228	292
Other	320	71	73	464	319	8	11	117	455	919
TOTAL	2,513	589	2,220	5,322	3,411	7,370	1,280	3,604	15,665	20,987

Prepared by: Washington Headquarters Services
Directorate for Information
Operations and Reports

**DoD Active Duty Military and Direct Hire Civilian Personnel
By Installation or City, According to Defense Component: September 30, 1992**

Iowa

INSTALLATION/ CITY	Military Personnel			Civilian Personnel					TOTAL DEPARTMENT OF DEFENSE	
	Army	Navy	Air Force	Sub- Total	Army	Navy	Air Force	Other DoD Organizations		Sub- Total
Cedar Rapids		4	1	5	20			113	133	138
Des Moines		30	68	98	75	4	260	3	342	440
Grimes					252		11		263	263
Sioux City	4		40	44	17		236		253	297
Other	195	36	39	270	507	1	26	17	551	821
TOTAL	199	70	148	417	871	5	533	133	1,542	1,959

Prepared by: Washington Headquarters Services
Directorate for Information
Operations and Reports

**DoD Active Duty Military and Direct Hire Civilian Personnel
By Installation or City, According to Defense Component: September 30, 1992**

Kansas

INSTALLATION/ CITY	Military Personnel			Civilian Personnel					TOTAL DEPARTMENT OF DEFENSE	
	Army	Navy	Air Force	Sub- Total	Army	Navy	Air Force	Other DoD Organizations		Sub- Total
Forbes Field			84	84			223		223	307
Fort Leavenworth	2,980	139	114	3,233	1,871	40		84	1,995	5,228
Fort Riley	14,455		68	14,523	2,187	10	2	99	2,298	16,821
McConnell AFB			3,065	3,065			808	67	975	4,040
Overland Park		7	3	10	1	115			116	126
Topeka	40	14	6	60	275		17		292	352
Wichita	12	18	18	48	87	1	2	246	336	384
Other	135	127	41	303	455	32	1	29	517	820
TOTAL	17,622	305	3,389	21,326	4,876	198	1,153	525	6,752	28,078

Prepared by: Washington Headquarters Services
Directorate for Information
Operations and Reports

**DoD Active Duty Military and Direct Hire Civilian Personnel
By Installation or City, According to Defense Component: September 30, 1992
Kentucky**

INSTALLATION/ CITY	Military Personnel				Civilian Personnel				TOTAL DEPARTMENT OF DEFENSE	
	Army	Navy	Air Force	Sub- Total	Army	Navy	Air Force	Other DoD Organizations		
								Sub- Total		
Fort Campbell	22,022		114	22,136	2,505	7	3	768	3,283	25,419
Fort Knox	11,688	112	43	11,843	3,856	38		870	4,764	16,607
Frankfort	20		1	21	309		7		316	337
Lexington	35	17	17	69	863	4	1	44	912	981
Louisville	31	204	104	339	920	2,527	205	282	3,944	4,283
Richmond	12		56	68	533		1	1	535	603
Other	326		10	336	383			14	397	733
TOTAL	34,134	333	345	34,812	9,369	2,576	217	1,989	14,151	48,963

Prepared by: Washington Headquarters Services
Directorate for Information
Operations and Reports

**DoD Active Duty Military and Direct Hire Civilian Personnel
By Installation or City, According to Defense Component: September 30, 1992
Louisiana**

INSTALLATION/ CITY	Military Personnel			Civilian Personnel					TOTAL DEPARTMENT OF DEFENSE	
	Army	Navy	Air Force	Sub- Total	Army	Navy	Air Force	Other DoD Organizations		Sub- Total
Barksdale AFB			5,541	5,541		5	1,142	112	1,259	6,800
Baton Rouge	30	33	13	76	65	2	1	9	77	153
Belle Chasse		312		312		225	291	1	517	829
Camp Beauregard			3	3	189		7		196	199
England AFB			654	654			185	83	268	922
Fort Polk	12,721		75	12,796	2,211	3	1	84	2,299	15,095
New Orleans	192	1,332	112	1,336	1,476	1,686	352	160	3,674	5,310
Shreveport	358	13	11	382	97	1		20	118	500
Other	162	37	43	242	455	79	24	38	596	838
TOTAL	13,463	1,727	6,452	21,642	4,493	2,001	2,003	507	9,004	30,646

Prepared by: Washington Headquarters Services
Directorate for Information
Operations and Reports

**DoD Active Duty Military and Direct Hire Civilian Personnel
By Installation or City, According to Defense Component: September 30, 1992
Maryland**

INSTALLATION/ CITY	Military Personnel			Civilian Personnel					TOTAL DEPARTMENT OF DEFENSE	
	Army	Navy	Air Force	Sub- Total	Army	Navy	Air Force	Other DoD Organizations		Sub- Total
Aberdeen Prov Grnd	3,558	97	37	3,692	7,630	28	5	140	7,803	11,495
Adelphi		5		5	1,547	1			1,548	1,553
Andrews AFB	20	318	5,098	5,436	2	158	1,887	129	2,176	7,612
Annapolis		5,688	15	5,703	4	2,708	34	69	2,815	8,518
Baltimore	9	79	160	248	1,055	16	10	587	1,668	1,916
Bethesda	470	3,435	277	4,182	187	1,628		857	2,672	6,854
Brookmont			12	12				2,735	2,735	2,747
Carderock Springs		12		12		1,496			1,496	1,508
Cheltenham		157		157		260			260	417
Edgewood	364		1	365	76				76	441
Fort Detrick	810	42	34	886	1,234	55	29	40	1,358	2,244
Fort Meade	4,609	1,289	1	5,899	2,908	33	41	262	3,244	9,143
Fort Ritchie	925	15	76	1,016	948		9	48	1,005	2,021
Hanover		1		1	223	8	2	36	269	270
Harmans								100	100	100
Havre de Grace					145				145	145
Hyattsville		148	1	149	4	11			15	164
Indian Head	88	401	50	539	6	2,819	1		2,826	3,385
Linthicum Heights		88	6	94	17	1	1	17	38	130
Middle River					131		325	11	467	467

Prepared by: Washington Headquarters Services
Directorate for Information
Operations and Reports

**DoD Active Duty Military and Direct Hire Civilian Personnel
By Installation or City, According to Defense Component: September 30, 1992
Maryland**

INSTALLATION/ CITY	Military Personnel				Civilian Personnel				TOTAL DEPARTMENT OF DEFENSE	
	Army	Navy	Air Force	Sub- Total	Army	Navy	Air Force	Other DoD Organizations		Sub- Total
	Patuxent River NATC	7	2,634	9	2,650		3,410			40
Silver Spring			1	1	92	1		146	239	240
St. Inigoes		38		38		347			347	385
Suitland		534		534	3	1,150	1	1	1,155	1,689
Thurmont		133	2	135		1			1	136
Towson		1	5	6	5			292	297	303
White Oak		12		12	2	1,631			1,633	1,645
Other	301	90	162	553	257	105	12	284	658	1,211
TOTAL	11,161	15,217	5,947	32,325	16,476	15,867	2,357	5,794	40,494	72,819

Prepared by: Washington Headquarters Services
Directorate for Information
Operations and Reports

**DoD Active Duty Military and Direct Hire Civilian Personnel
By Installation or City, According to Defense Component: September 30, 1992
Massachusetts**

INSTALLATION/ CITY	Military Personnel				Civilian Personnel				TOTAL DEPARTMENT OF DEFENSE		
	Army	Navy	Air Force	Sub- Total	Army	Navy	Air Force	Other DoD Organizations		Sub- Total	
Ayer	4			4	146					146	150
Boston	118	313	52	483	54	363	2	838	1,257	1,740	
Burlington		5	4	9		1		164	165	174	
Cambridge	7	63	43	113	7	12	284	2	305	418	
Fort Devens	3,389	210	121	3,720	1,342	4		122	1,468	5,188	
Hanscom AFB			1,947	1,947	69	5	1,824		1,898	3,845	
Lexington					6		96	33	135	135	
Lynn		3	1	4				139	139	143	
Natick	153	2	2	157	1,281	53	6		1,340	1,497	
Otis AGB			83	83	70		331		401	484	
Pittsfield		3	1	4	8	40		81	129	133	
Sagamore			108	108						108	
Waltham			1	1	469	2	11	146	628	629	
Watertown	10			10	511	3		3	517	527	
Westfield					14		222		236	236	
Westover AFB		8	68	76	30		992	2	1,024	1,100	
Weymouth		210		210		236		2	238	448	
Worcester	13	33	19	65	11	1	53	3	68	133	
Other	32	87	66	185	416	22	77	457	972	1,157	
TOTAL	3,726	937	2,516	7,179	4,434	742	3,898	1,992	11,066	18,245	

Prepared by: Washington Headquarters Services
Directorate for Information
Operations and Reports

**DoD Active Duty Military and Direct Hire Civilian Personnel
By Installation or City, According to Defense Component: September 30, 1992
Michigan**

INSTALLATION/ CITY	Military Personnel				Civilian Personnel				TOTAL DEPARTMENT OF DEFENSE		
	Army	Navy		Air Force	Sub- Total	Army	Navy	Air Force		Other DoD Organizations	Sub- Total
Battle Creek		14	71	85	9	24	628	1,195	1,856	1,941	
Detroit	395	370	7	772	379	13		170	562	1,334	
Grand Rapids		14	4	18	12		1	101	114	132	
Grayling					108				108	108	
K. I. Sawyer AFB			3,133	3,133	5		393	51	449	3,582	
Lansing		8	17	25	371	3	14	3	391	416	
Sault Ste. Marie		1		1	178				178	179	
Selfridge AGB	16	41	211	268	135	60	748	86	1,029	1,297	
Warren		6		6	5,217	12		65	5,294	5,300	
Wurtsmith AFB			1,707	1,707	2		267	42	311	2,018	
Other	250	101	167	518	511	13	21	229	774	1,292	
TOTAL	661	555	5,317	6,533	6,927	125	2,072	1,942	11,066	17,599	

Prepared by: Washington Headquarters Services
Directorate for Information
Operations and Reports

**DoD Active Duty Military and Direct Hire Civilian Personnel
By Installation or City, According to Defense Component: September 30, 1992
Minnesota**

INSTALLATION/ CITY	Military Personnel				Civilian Personnel				TOTAL DEPARTMENT OF DEFENSE	
	Army	Navy	Air Force	Sub- Total	Army	Navy	Air Force	Other DoD Organizations		Sub- Total
Bloomington			6	6	3			121	124	130
Duluth	10	4	99	113	53		254	11	318	431
Fort Snelling Mil Res	235		23	258	160			5	165	423
Little Falls			1	1	320		1		321	322
Minneapolis		326	87	413	53	20	338	137	548	961
St. Paul	17	12	11	40	585	2	229	26	842	882
Other	31	16	21	68	379	12	2	200	593	661
TOTAL	293	358	248	899	1,553	34	824	500	2,911	3,810

Prepared by: Washington Headquarters Services
Directorate for Information
Operations and Reports

**DoD Active Duty Military and Direct Hire Civilian Personnel
By Installation or City, According to Defense Component: September 30, 1992
Mississippi**

INSTALLATION/ CITY	Military Personnel				Civilian Personnel					TOTAL DEPARTMENT OF DEFENSE
	Army	Navy	Air Force	Sub- total	Army	Navy	Air Force	Other DoD Organizations	Sub- Total	
Bay St. Louis	6	103		109	5	1,365		71	1,441	1,550
Camp Shelby					328				328	328
Columbus AFB			1,466	1,466	1		315	34	350	1,816
Flowood					133		223		356	356
Greenville					220				220	220
Grenada					113				113	113
Gulfport	14	806	76	896	122	619	38	29	808	1,704
Jackson	149	30	76	255	233		10	13	256	511
Keesler AFB			7,284	7,284		16	2,034	95	2,145	9,429
Meridian		1,813	104	1,917	58	342	250	18	668	2,585
Pascagoula	5	244		249	1	566		31	598	847
Vicksburg		1		1	3,097	19		1	3,117	3,118
Other	87	40	29	156	553	9		51	613	769
TOTAL	261	3,037	9,035	12,333	4,864	2,936	2,870	343	11,013	23,346

Prepared by: Washington Headquarters Services
Directorate for Information
Operations and Reports

**DoD Active Duty Military and Direct Hire Civilian Personnel
By Installation or City, According to Defense Component: September 30, 1992
Missouri**

INSTALLATION/ CITY	Military Personnel				Civilian Personnel					TOTAL DEPARTMENT OF DEFENSE	
	Army	Navy		Air Force	Sub- Total	Army	Navy	Air Force	Other DoD Organizations		Sub- Total
		15	417								
Fort Leonard Wood	9,900	15	32	9,947	2,055	9	3	101	2,168	12,115	
Jefferson City	24	10	10	34	328	13	341	375	341	375	
Kansas City	166	21	21	604	724	385	2	578	1,689	2,293	
Lemay	18	18	18	18	280	280	280	280	280	298	
Overland		2	2	2	1,797	1,797	1,797	1,797	1,797	1,799	
Richards Gebaur ARS		4	4	4	388	388	388	388	388	392	
Springfield	34	20	2	56	128	1	131	2	131	187	
St. Ann		2	7	9	13	294	294	294	294	294	
St. Joseph		288	246	924	5,936	53	182	1	196	205	
St. Louis	390	288	246	924	5,936	53	7	3,534	9,530	10,454	
Whiteman AFB		3,226	3,226	3,226	71	385	508	52	508	3,734	
Other	351	49	49	449	708	21	51	223	1,003	1,452	
TOTAL	10,883	791	3,599	15,273	11,760	469	1,325	4,771	18,325	33,598	

Prepared by: Washington Headquarters Services
Directorate for Information
Operations and Reports

**DoD Active Duty Military and Direct Hire Civilian Personnel
By Installation or City, According to Defense Component: September 30, 1992
Montana**

INSTALLATION/ CITY	Military Personnel			Civilian Personnel				TOTAL DEPARTMENT OF DEFENSE		
	Army	Air Force		Navy	Army	Navy	Air Force		Other DoD Organizations	Sub-Total
Great Falls		1	52		7		295	2	304	357
Helena	6		4		259		9		268	278
Malmstrom AFB			4,168		3		462	48	513	4,681
Other	22	19	175		139	1	5	17	162	378
TOTAL	28	20	4,399		408	1	771	67	1,247	5,694

Prepared by: Washington Headquarters Services
Directorate for Information
Operations and Reports

**DoD Active Duty Military and Direct Hire Civilian Personnel
By Installation or City, According to Defense Component: September 30, 1992
Nebraska**

INSTALLATION/ CITY	Military Personnel			Civilian Personnel				TOTAL DEPARTMENT OF DEFENSE		
	Army	Navy	Air Force	Sub- Total	Army	Navy	Air Force		Other DoD Organizations	Sub- Total
Lincoln		18	64	82	257	2	239	4	502	584
Offutt AFB	30	31	9,779	9,840	27	17	1,395	68	1,507	11,347
Omaha	30	377	21	428	1,505	25	3	28	1,561	1,989
Other	19		138	157	176		9	4	189	346
TOTAL	79	426	10,002	10,507	1,965	44	1,646	104	3,759	14,266

Prepared by: Washington Headquarters Services
Directorate for Information
Operations and Reports

**DoD Active Duty Military and Direct Hire Civilian Personnel
By Installation or City, According to Defense Component: September 30, 1992
Nevada**

INSTALLATION/ CITY	Military Personnel			Civilian Personnel					TOTAL DEPARTMENT OF DEFENSE	
	Army	Navy	Air Force	Sub- Total	Army	Navy	Air Force	Other DoD Organizations		Sub- Total
Carson City			5	5	112		10	3	125	130
Fallon		917		917		315		20	335	1,252
Las Vegas		24	14	38	20		73	9	102	140
Nellis AFB			6,668	6,668	9		951	88	1,048	7,716
Reno		12	69	81	59	1	225	5	290	371
Other	14	3	16	33	75	36	47	27	185	218
TOTAL	14	956	6,772	7,742	275	352	1,306	152	2,085	9,827

Prepared by: Washington Headquarters Services
Directorate for Information
Operations and Reports

**DoD Active Duty Military and Direct Hire Civilian Personnel
By Installation or City, According to Defense Component: September 30, 1992
New Hampshire**

INSTALLATION/ CITY	Military Personnel			Civilian Personnel					TOTAL DEPARTMENT OF DEFENSE	
	Army	Navy	Air Force	Sub- Total	Army	Navy	Air Force	Other DoD Organizations		Sub- Total
Concord			4	4	153		5		158	162
Hanover	7	1		8	319	5			324	332
Nashua		1	3	4				96	96	100
Pease AGS			80	80	1		244	1	246	326
Portsmouth		110	24	134	6	316	4	22	348	482
Other	10	83	40	133	110	1	56	54	221	354
TOTAL	17	195	151	363	589	322	309	173	1,393	1,756

Prepared by: Washington Headquarters Services
Directorate for Information
Operations and Reports

**DoD Active Duty Military and Direct Hire Civilian Personnel
By Installation or City, According to Defense Component: September 30, 1992
New Jersey**

INSTALLATION/ CITY	Military Personnel			Civilian Personnel					TOTAL DEPARTMENT OF DEFENSE	
	Army	Navy	Air Force	Sub- Total	Army	Navy	Air Force	Other DoD Organizations		Sub- Total
Bayonne	59	66	5	130	790	2,392	3	57	3,242	3,372
Cherry Hill			2	2	11	46		86	143	145
Colts Neck		442		442		839		11	850	1,292
Fort Dix	2,177	53	234	2,464	1,087	2	1		1,090	3,554
Fort Monmouth	1,464	5	13	1,482	7,143	15	2	187	7,347	8,829
Iselin		169		169		6			6	175
Jersey City					113				113	113
Lakehurst	17	330		347	13	2,159		40	2,212	2,559
Lawrenceville					168		1		169	169
McGuire AFB		6	4,041	4,047			1,658	127	1,785	5,832
Moorestown		63		63		24		61	85	148
Picatinny Arsenal	89	15		104	5,055	21		30	5,106	5,210
Pleasantville							281		281	281
Springfield		2	3	5				175	175	180
Trenton		24	2	26	113	680	8	6	807	833
Other	69	133	107	309	574	20	7	674	1,275	1,584
TOTAL	3,875	1,308	4,407	9,590	15,067	6,204	1,961	1,454	24,686	34,276

Prepared by: Washington Headquarters Services
Directorate for Information
Operations and Reports

**DoD Active Duty Military and Direct Hire Civilian Personnel
By Installation or City, According to Defense Component: September 30, 1992
New Mexico**

INSTALLATION/ CITY	Military Personnel				Civilian Personnel					TOTAL DEPARTMENT OF DEFENSE
	Army	Navy	Air Force	Sub- Total	Army	Navy	Air Force	Other DoD Organizations	Sub- Total	
Albuquerque		391	29	420	310	14	346	379	1,049	1,489
Cannon AFB		2	4,780	4,782	10		441	52	503	5,285
Holloman AFB			4,552	4,552	129	4	969	70	1,172	5,724
Kirtland AFB		6	4,461	4,467	21	87	2,047	181	2,336	6,803
Santa Fe	22		7	29	223		6		229	258
White Sands Msl Rge	766	81	38	885	3,354	89	5	49	3,497	4,382
Other	237	2	13	252	369		9	24	402	654
TOTAL	1,025	482	13,880	15,387	4,416	194	3,823	755	9,188	24,575

Prepared by: Washington Headquarters Services
Directorate for Information
Operations and Reports

**DoD Active Duty Military and Direct Hire Civilian Personnel
By Installation or City, According to Defense Component: September 30, 1992
New York**

INSTALLATION/ CITY	Military Personnel			Civilian Personnel				TOTAL DEPARTMENT OF DEFENSE		
	Army	Navy	Air Force	Sub- Total	Army	Navy	Air Force		Other DoD Organizations	Sub- Total
Albany		182	12	194	81	9		1	91	285
Ballston Spa		1,081		1,081						1,081
Bethpage		10	1	11		3		208	211	222
Buffalo	45	233	16	294	325	10		55	390	684
Fort Drum	10,466		85	10,551	1,878			97	1,975	12,526
Fort Hamilton	380	8	8	396	210			42	252	648
Fort Totten	22			22	125		2		127	149
Fort Wadsworth					4	227		15	246	246
Garden City		91		91		25		268	293	384
Great Neck		7		7		33		100	133	140
Griffiss AFB	65	2	3,952	4,019	1		2,468	96	2,565	6,584
Latham					227				227	227
Newburgh	162	145	4	311	45		442	5	492	803
Niagara Falls			75	75	72	3	597	6	678	753
Peekskill			2	2	114	1			115	117
Plattsburgh AFB			2,178	2,178			379		379	2,557
Richmond	161	1,103	42	1,306	782	179	4	529	1,494	2,800
Rochester		37	18	55	149		3	42	194	249
Romulus	542			542	917			29	946	1,488
Schenectady		7	42	49	31	7	177	24	239	288

Prepared by: Washington Headquarters Services
Directorate for Information
Operations and Reports

**DoD Active Duty Military and Direct Hire Civilian Personnel
By Installation or City, According to Defense Component: September 30, 1992
New York**

INSTALLATION/ CITY	Military Personnel				Civilian Personnel					TOTAL DEPARTMENT OF DEFENSE
	Army	Navy	Air Force	Sub- Total	Army	Navy	Air Force	Other DoD Organizations	Sub- Total	
Scotia		84		84		47		47	94	178
Stewart AGS			209	209	47			1	48	257
Syracuse	55	26	43	124	134	12	273	143	562	686
Watervliet					2,056	4		5	2,065	2,065
West Point Mil Res	1,529	5	15	1,549	2,121	19		207	2,347	3,896
Westhampton Beach							190		190	190
Other	208	107	277	592	538	78	84	779	1,479	2,071
TOTAL	13,635	3,128	6,979	23,742	9,857	657	4,619	2,699	17,832	41,574

Prepared by: Washington Headquarters Services
Directorate for Information
Operations and Reports

**DoD Active Duty Military and Direct Hire Civilian Personnel
By Installation or City, According to Defense Component: September 30, 1992
North Carolina**

INSTALLATION/ CITY	Military Personnel				Civilian Personnel					TOTAL DEPARTMENT OF DEFENSE
	Army	Navy	Air Force	Sub- Total	Army	Navy	Air Force	Other DoD Organizations	Sub- Total	
Asheville		5	3	8	19	5	77	6	107	115
Camp Lejeune		25,260		25,260		2,116		827	2,943	28,203
Charlotte	14	42	86	142	91	3	231	14	339	481
Cherry Point MCAS		8,352		8,352		4,626		272	4,898	13,250
Durham		17	17	34	129	1		1	131	165
Fort Bragg	42,412	18	252	42,682	4,906	19		861	5,786	48,468
Greensboro	36	31	9	76	15	3	1	53	72	148
Jacksonville		8,233	1	8,234	3	137		32	172	8,406
Pope AFB			4,490	4,490			350		350	4,840
Raleigh	215	310	40	565	377	15	8	16	416	981
Seymour Johnson AFB			4,678	4,678	6		516	53	575	5,253
Sunny Point MOT					334				334	334
Wilmington	12	13	2	27	406			1	407	434
Other	213	123	68	404	485	13	35	83	616	1,020
TOTAL	42,902	42,404	9,646	94,952	6,771	6,938	1,218	2,219	17,146	112,098

Prepared by: Washington Headquarters Services
Directorate for Information
Operations and Reports

**DoD Active Duty Military and Direct Hire Civilian Personnel
By Installation or City, According to Defense Component: September 30, 1992
North Dakota**

INSTALLATION/ CITY	Military Personnel				Civilian Personnel				TOTAL DEPARTMENT OF DEFENSE	
	Army	Navy	Air Force	Sub- Total	Army	Navy	Air Force	Other DoD Organizations		Sub- Total
	Bismarck	4		2	6	186		4		
Fargo	13	8	79	100	30	1	296	2	329	
Grand Forks AFB			4,670	4,670	4		444	43	491	
Minot AFB			4,807	4,807	1		597	46	644	
Other	9		92	101	187		11	16	214	
TOTAL	26	8	9,650	9,684	408	1	1,352	107	1,868	

Prepared by: Washington Headquarters Services
Directorate for Information
Operations and Reports

**DOD Active Duty Military and Direct Hire Civilian Personnel
By Installation or City, According to Defense Component: September 30, 1992**

Ohio

INSTALLATION/ CITY	Military Personnel				Civilian Personnel					TOTAL DEPARTMENT OF DEFENSE
	Army	Navy	Air Force	Sub- Total	Army	Navy	Air Force	Other DoD Organizations	Sub- Total	
Akron		16	10	26	5			125	130	156
Cincinnati	85	108	44	237	300	4	3	91	398	635
Cleveland	180	260	19	459	82	46	16	2,078	2,222	2,681
Columbus	63	285	102	450	430	24	24	4,714	5,192	5,642
Dayton		54	90	144	19	11	1	160	191	335
Evendale							1	139	140	140
Kettering					19	11	53	2,357	2,440	2,440
Lima					20			96	116	116
Mansfield				49	9		175	8	192	241
Newark				65	126	2	1,935	7	2,070	2,135
Rickenbacker AGB				136			739		739	875
Springfield				57	11		261	4	276	333
Swanton							239		239	239
Toledo		5	49	54	136		2	23	161	215
Whitehall	92			92	1	18		2,882	2,901	2,993
Wright Patterson AFB		33	8,679	8,712	34	78	15,432	211	15,755	24,467
Youngstown		12	6	18	13		389	2	404	422
Other	176	117	96	389	728	24	71	290	1,113	1,502
TOTAL	596	890	9,402	10,888	1,933	218	19,341	3,187	34,679	45,567

Prepared by: Washington Headquarters Services
Directorate for Information
Operations and Reports

**DoD Active Duty Military and Direct Hire Civilian Personnel
By Installation or City, According to Defense Component: September 30, 1992
Oklahoma**

INSTALLATION/ CITY	Military Personnel			Civilian Personnel				TOTAL DEPARTMENT OF DEFENSE		
	Army	Navy	Air Force	Sub- Total	Army	Navy	Air Force		Other DoD Organizations	Sub- Total
Altus AFB			3,078	3,078	9		452	32	493	3,571
Fort Sill	15,926	303	15	16,244	2,758	28	7	144	2,937	19,181
McAlester		10	2	12	1,256	69		5	1,330	1,342
Norman	32	24	27	83	105				105	188
Oklahoma City	93	211	86	390	187	20	691	51	949	1,339
Tinker AFB		74	7,100	7,174	28	49	12,869	1,225	14,171	21,345
Tulsa	16	4	48	66	720	3	238	62	1,023	1,089
Vance AFB			1,035	1,035	1		93	28	122	1,157
Other	164	16	14	194	730		5	7	742	936
TOTAL	16,231	642	11,403	28,276	5,794	169	14,355	1,554	21,872	50,148

Prepared by: Washington Headquarters Services
Directorate for Information
Operations and Reports

**DoD Active Duty Military and Direct Hire Civilian Personnel.
By Installation or City, According to Defense Component: September 30, 1992**

Oregon

INSTALLATION/ CITY	Military Personnel			Civilian Personnel					TOTAL DEPARTMENT OF DEFENSE	
	Arm.	Sub- Total		Army	Navy	Air Force	Other DoD Organizations	Sub- Total		
		Navy	Air Force							
Bonneville				149					149	149
Clackamas				118					118	118
Corvallis	6	80	8	3	3				6	100
Hermiston	5			219					219	224
Kingsley Field			236			109			109	345
Portland	92	327	130	1,014	23	555	28		1,620	2,169
Salem		15	3	212		12			224	242
Other	82	43	21	404	1	45	15		465	611
TOTAL	185	465	398	2,119	27	721	43		2,910	3,958

Prepared by: Washington Headquarters Services
Directorate for Information
Operations and Reports

**DoD Active Duty Military and Direct Hire Civilian Personnel
By Installation or City, According to Defense Component: September 30, 1992
Pennsylvania**

INSTALLATION/ CITY	Military Personnel			Civilian Personnel					TOTAL DEPARTMENT OF DEFENSE	
	Army	Navy	Air Force	Sub- Total	Army	Navy	Air Force	Other DoD Organizations		Sub- Total
Carlisle Barracks	600		24	624	563	6		43	612	1,236
Coraopolis			1	1	31		392		423	424
Fairfield					118				118	118
Harrisburg	87	129	60	276	27	9	237	28	301	577
Indiantown Gap	95		24	119	1,152	3	89		1,244	1,363
Letterkenny Army Depot	82			82	3,818	7		1,456	3,825	3,907
Mechanicsburg	17	124	5	146	3	5,013			6,472	6,618
New Cumberland	68	58	27	153	706	14	3	2,410	3,133	3,286
Oakdale	80			80	189			34	223	303
Philadelphia	296	1,477	73	1,846	587	13,364	14	8,106	22,071	23,917
Pittsburgh		291	176	467	526	22	355	144	1,047	1,514
Reading	9	19	3	31	19			68	87	118
State College	26	35	49	110	7	3	31	15	56	166
Tobyhanna	24			24	3,261	5		51	3,317	3,341
Warminster		232		232		2,516		3	2,519	2,751
Wilkes-Barre	13	11	17	41	68	1	1	10	80	121
Willow Grove	12	367	62	441	96	237	513	8	854	1,295
Other	331	128	74	533	1,448	9	12	659	2,128	2,661
TOTAL	1,740	2,871	585	5,206	12,619	21,209	1,647	13,035	48,510	53,716

Prepared by: Washington Headquarters Services
Directorate for Information
Operations and Reports

**DoD Active Duty Military and Direct Hire Civilian Personnel
By Installation or City, According to Defense Component: September 30, 1992
Rhode Island**

INSTALLATION/ CITY	Military Personnel				Civilian Personnel				TOTAL DEPARTMENT OF DEFENSE	
	Army	Navy	Air Force	Sub- Total	Army	Navy	Air Force	Other DoD Organizations		Sub- Total
	Davisville		5		5		91			4
Newport		3,473	59	3,532		3,413		88	3,501	7,033
North Kingstown			62	62	59		174		233	295
Providence	36	23	7	66	150	6	12	7	175	241
Other	10	16	23	49	123		67	47	237	286
TOTAL	46	3,517	151	3,714	332	3,510	253	146	4,241	7,955

Prepared by: Washington Headquarters Services
Directorate for Information
Operations and Reports

**DoD Active Duty Military and Direct Hire Civilian Personnel
By Installation or City, According to Defense Component: September 30, 1992
South Carolina**

INSTALLATION/ CITY	Military Personnel				Civilian Personnel				TOTAL DEPARTMENT OF DEFENSE	
	Army	Navy	Air Force	Sub- Total	Army	Navy	Air Force	Other DoD Organizations		Sub- Total
	Beaufort	19	3,157	2	3,178	1	589			136
Charleston	14	6,700		6,714	175	10,238		470	10,883	17,597
Charleston AFB	8		4,088	4,096			1,079	70	1,149	5,245
Columbia	270	221	25	516	371	9	7	20	407	923
Eastover					140				140	140
Fort Jackson	11,303	12	9	11,324	1,842	6		271	2,119	13,443
Greenville	5	10	3	18	68	2	3	20	93	111
McEntire AGB			72	72			277		277	349
Myrtle Beach AFB			1,390	1,390			196	95	291	1,681
Parris Island MCRD		6,163		6,163		493		39	532	6,695
Shaw AFB			5,360	5,360		1	521	69	591	5,951
Other	260		30	290	431	8	9	6	454	744
TOTAL	11,879	16,263	10,979	39,121	3,028	11,326	2,092	1,196	17,642	56,763

Prepared by: Washington Headquarters Services
Directorate for Information
Operations and Reports

**DoD Active Duty Military and Direct Hire Civilian Personnel
By Installation or City, According to Defense Component: September 30, 1992
South Dakota**

INSTALLATION/ CITY	Military Personnel			Civilian Personnel				TOTAL DEPARTMENT OF DEFENSE		
	Army	Navy	Air Force	Sub- Total	Army	Navy	Air Force		Other DoD Organizations	Sub- Total
Ellsworth AFB	5		5,958	5,963	2		463	67	532	6,495
Rapid City	14	1	2	17	178		3	3	184	201
Sioux Falls		5	55	60	19		242	5	266	326
Other	13		75	88	302		2	2	306	394
TOTAL	32	6	6,090	6,128	501		710	77	1,288	7,416

Prepared by: Washington Headquarters Services
Directorate for Information
Operations and Reports

**DoD Active Duty Military and Direct Hire Civilian Personnel
By Installation or City, According to Defense Component: September 30, 1992
Tennessee**

INSTALLATION/ CITY	Military Personnel				Civilian Personnel				TOTAL DEPARTMENT OF DEFENSE	
	Army	Navy	Air Force	Sub- Total	Army	Navy	Air Force	Other DoD Organizations		Sub- Total
	Arnold AFB			143	143	31		209		32
Knoxville	28	31	19	78	87		259	9	355	433
Memphis	41	199	80	320	1,058	50	204	2,467	3,779	4,099
Millington		6,979		6,979	1	1,024		45	1,070	8,049
Murfreesboro	20		136	156	6				6	162
Nashville	200	276	92	568	820	17	308	46	1,191	1,759
Other	68	28	29	125	753	11	52	75	891	1,016
TOTAL	357	7,513	499	8,369	2,756	1,102	1,032	2,674	7,564	15,933

Prepared by: Washington Headquarters Services
Directorate for Information
Operations and Reports

**DoD Active Duty Military and Direct Hire Civilian Personnel
By Installation or City, According to Defense Component: September 30, 1992**

Texas

INSTALLATION/ CITY	Military Personnel				Civilian Personnel				TOTAL DEPARTMENT OF DEFENSE	
	Army		Sub- Total		Army		Sub- Total			
	Navy	Air Force	Navy	Air Force	Army	Navy	Air Force	Other DoD Organizations		
Arlington	18	50	1	69	3	9	7	28	47	116
Austin	52	60	78	190	87	9	2	85	183	373
Bergstrom AFB	37	2,385		2,422	1		738	86	825	3,247
Brooks AFB		1,616		1,616	1	2	1,412	49	1,464	3,080
Camp Mabry		1		1	424		13		437	438
Carswell AFB	20	3,514		3,534	1	1	693	84	779	4,313
Chase Field NAS		3	384	387		151		19	170	557
Corpus Christi		4	1,905	1,909	3,383	1,005	1	54	4,443	6,352
Dallas		119	737	856	277	282	201	197	957	1,813
Dyess AFB		5,146		5,146	2		362	73	437	5,583
El Paso	1,688	20	62	1,770	981	5		18	1,004	2,774
Eldorado		102		102			20		20	122
Ellington Field AGS		81	1	82	71		296		367	449
Fort Bliss	14,122	59	90	14,271	2,664	24	1	171	2,860	17,131
Fort Hood	30,733	152		30,885	3,852	8	1	228	4,089	34,974
Fort Sam Houston	8,333	35	279	8,647	3,984	18	1	110	4,113	12,760
Fort Worth		54	30	84	862	7	12	471	1,352	1,436
Galveston			19	19	327	1			328	347
Gatesville					249				249	249
Goodfellow AFB	584	1,840	102	2,526	3	9	325	45	382	2,908

Prepared by: Washington Headquarters Services
Directorate for Information
Operations and Reports

**DoD Active Duty Military and Direct Hire Civilian Personnel
By Installation or City, According to Defense Component: September 30, 1992
Texas**

INSTALLATION/ CITY	Military Personnel				Civilian Personnel					TOTAL DEPARTMENT OF DEFENSE
	Army	Navy	Air Force	Sub- Total	Army	Navy	Air Force	Other DoD Organizations	Sub- Total	
Grand Prairie				49	129			1	130	130
Greenville			49		1			72	80	129
Houston		316	69	385	107			109	235	620
Ingleside		301		301		133			133	434
Irving	37		5	42	18			101	119	161
Kelly AFB		6	4,335	4,341	18		15,006	1,741	16,817	21,158
Killeen	236		1	237	1				1	238
Kingsville		772		772	2			10	359	1,131
Lackland AFB		219	12,539	12,758	16		2,631	164	2,821	15,579
Laughlin AFB			1,441	1,441	1		846	30	878	2,319
Randolph AFB		9	4,762	4,771	4		2,612	121	2,810	7,581
Red River Army Depot	9			9	3,507			1,438	4,949	4,958
Reese AFB			1,345	1,345	1		381	34	416	1,761
Richardson			1	1				520	520	521
San Angelo		193	8	201	23				23	224
San Antonio		452	298	1,345	665		81	164	921	2,266
Sheppard AFB/Wichita			5,519	5,519	8		1,103	84	1,201	6,720
Other	387	243	150	780	1,014		60	151	1,233	2,013
TOTAL	56,851	6,199	45,763	108,813	22,687	2,187	26,820	6,458	58,152	166,965

Prepared by: Washington Headquarters Services
Directorate for Information
Operations and Reports

**DoD Active Duty Military and Direct Hire Civilian Personnel
By Installation or City, According to Defense Component: September 30, 1992**

Utah

INSTALLATION/ CITY	Military Personnel			Civilian Personnel					TOTAL DEPARTMENT OF DEFENSE		
	Army	Navy	Air Force	Sub- Total	Army	Navy	Air Force	Other DoD Organizations		Sub- Total	
Brigham City			5	5		6			153	59	164
Draper					242					242	242
Dugway	112		112		781	1	19		29	830	942
Fort Douglas	88	2	95	5	157	1			5	163	258
Harrisville	208		208								208
Hill AFB		1	4,800	4,799	55	43	11,275		693	12,066	16,866
Magna		9	20	11		24			65	89	109
Murray	105		105		2					2	107
Ogden	7	5	15	3	19	3			2,101	2,123	2,138
Salt Lake City		40	158	118	75	8	298		108	489	647
Tooele Army Depot	20	1	21		3,001	5			361	3,367	3,388
Other	7	56	94	31	211	1	87		42	341	435
TOTAL	547	114	5,633	4,972	4,543	92	11,679		3,557	19,871	25,504

Prepared by: Washington Headquarters Services
Directorate for Information
Operations and Reports

**DoD Active Duty Military and Direct Hire Civilian Personnel
By Installation or City, According to Defense Component: September 30, 1992
Vermont**

INSTALLATION/ CITY	Military Personnel				Civilian Personnel					TOTAL DEPARTMENT OF DEFENSE			
	Army		Navy		Air Force		Sub- Total	Army	Navy		Air Force	Other DoD Organizations	Sub- Total
Burlington	5	2	88	95	2	266	38	306	401				
Colchester	6	4	10	152	11	173	173	173	173				
Other	10	13	36	157	1	15	209	209	209				
TOTAL	21	15	105	141	1	277	53	642	783				

Prepared by: Washington Headquarters Services
Directorate for Information
Operations and Reports

DoD Active Duty Military and Direct Hire Civilian Personnel
By Installation or City, According to Defense Component: September 30, 1992
Virginia

INSTALLATION/ CITY	Military Personnel			Civilian Personnel					TOTAL DEPARTMENT OF DEFENSE	
	Army	Navy	Air Force	Sub- Total	Army	Navy	Air Force	Other DoD Organizations		Sub- Total
Alexandria	3,632	249	180	4,061	4,372	608	19	3,254	8,253	12,314
Arlington	4,720	7,699	4,883	17,302	3,727	14,369	2,045	6,800	26,941	44,243
Baileys Crossroads	178		38	216	143	51		4	198	414
Cameron Station					533	2		103	638	638
Charlottesville		41	23	64	559	2		13	574	638
Chesapeake		1,112	1	1,113	3	520		2	525	1,638
Dahlgren		736	2	738		3,489	1	38	3,528	4,266
Dale City	116			116						116
Dulles Int A/P		13		13				198	198	211
Fairfax		14	136	150	7		1	14	22	172
Falls Church	328	20	27	375	1,015	44		349	1,408	1,783
Fort Belvoir	2,260	82	239	2,581	5,783	17	45	197	6,042	8,623
Fort Eustis	5,880	21	13	5,914	2,486	18		80	2,584	8,498
Fort Hill					324				324	324
Fort Lee	4,222	80	26	4,328	2,396	24		814	3,234	7,562
Fort Myer	1,920		4	1,924	658			51	709	2,633
Fort Pickett					502				502	502
Fort Story		52		52	105	41		40	186	238
Hampton	932	10	6	948	1,744	8	3	118	1,873	2,821
Hybla Valley	22			22				348	348	370

Prepared by Washington Headquarters Services
 Directorate for Information
 Operations and Reports

**DoD Active Duty Military and Direct Hire Civilian Personnel
By Installation or City, According to Defense Component: September 30, 1992**

Virginia

INSTALLATION/ CITY	Military Personnel			Civilian Personnel					TOTAL DEPARTMENT OF DEFENSE	
	Army	Navy	Air Force	Sub- Total	Army	Navy	Air Force	Other DoD Organizations		Sub- Total
Langley AFB	21	4	8,949	8,974	51	11	1,842	134	2,038	11,012
McLean		7	23	30	50			122	172	202
Merrifield								478	478	478
Newport News		167	2	169	8	494		47	549	718
Norfolk	221	17,406	171	17,798	442	14,908	1	1,453	16,804	34,602
Portsmouth		3,466	1	3,467	27	13,450		85	13,562	17,029
Quantico		6,556	32	6,588		1,660		323	1,983	8,571
Radford			1	1	151			14	165	166
Reston	21	3	34	58		7	11	1,046	1,064	1,122
Richmond	282	280	62	624	395	19	4	3,471	3,889	4,513
Sandston			75	75	91		252		343	418
Tabb	169			169						169
Tysons Corner								163	163	163
Vinton	880			880	12				12	892
Virginia Beach	1,020	10,531	26	11,577	11	2,002		430	2,443	14,020
Wallops Flight Ctr		145		145		55			55	200
Warrenton	59			59	1,091			62	1,153	1,212
Williamsburg	30	249	1	280	4	131		36	171	451
Winchester			1	1	372				372	372
Woodbridge			1	1	94	1		11	106	107

Prepared by: Washington Headquarters Services
Directorate for Information
Operations and Reports

**DoD Active Duty Military and Direct Hire Civilian Personnel
By Installation or City, According to Defense Component: September 30, 1992**

Virginia

INSTALLATION/ CITY	Military Personnel				Civilian Personnel				TOTAL DEPARTMENT OF DEFENSE	
	Army	Navy	Air Force	Sub- Total	Army	Navy	Air Force	Other DoD Organizations		Sub- Total
	Yorktown		1,025		1,025		1,939			13
Other	268	87	57	412	282	51	63	354	750	1,162
TOTAL	27,181	50,055	15,014	92,250	27,438	53,921	4,287	20,665	106,311	198,561

Prepared by: Washington Headquarters Services
Directorate for Information
Operations and Reports

**DoD Active Duty Military and Direct Hire Civilian Personnel
By Installation or City, According to Defense Component: September 30, 1992
Washington**

INSTALLATION/ CITY	Military Personnel				Civilian Personnel					TOTAL DEPARTMENT OF DEFENSE
	Army	Navy	Air Force	Sub- Total	Army	Navy	Air Force	Other DoD Organizations	Sub- Total	
	Bangor		2,385		2,385		2,266		58	
Bremerton	20	1,601		1,621		13,012		238	13,250	14,871
Bridgeport					104				104	104
Camp Murry			38	38	197		70		267	305
Dallesport					103				103	103
Fairchild AFB			4,144	4,144			710	97	807	4,951
Fort Lawton	160			160	80				80	240
Fort Lewis	15,935	7	100	16,042	2,279	8	1	339	2,627	18,669
Hadlock						104			104	104
Keyport		265		265		2,787			2,787	3,052
Lacey	122		2	124						124
McChord AFB		4	4,287	4,291		3	1,151	183	1,337	5,628
Oak Harbor		458		458		28			28	486
Seattle	21	986	123	1,130	705	379	45	408	1,537	2,667
Silverdale		129		129		153			153	282
Spokane	30	33	13	76	62	8	1	11	82	158
Tacoma	1,360	26	5	1,391	1,235	6	1	8	1,250	2,641
Walla Walla			1	1	360				368	369
Whidbey Island NAS		3,122	3	3,125		712		58	770	3,895
Yakima	80	10	1	91	165			4	169	260

Prepared by: Washington Headquarters Services
Directorate for Information
Operations and Reports

**DoD Active Duty Military and Direct Hire Civilian Personnel
By Installation or City, According to Defense Component: September 30, 1992
Washington**

INSTALLATION/ CITY	Military Personnel				Civilian Personnel				TOTAL DEPARTMENT OF DEFENSE	
	Army	Navy	Air Force	Sub- Total	Army	Navy	Air Force	Other DoD Organizations		Sub- Total
	Other	102	43	47	192	450	146	115		137
TOTAL	17,830	9,069	8,764	35,663	5,740	19,620	2,094	1,541	28,995	
										1,040
										64,658

Prepared by: Washington Headquarters Services
Directorate for Information
Operations and Reports

**DoD Active Duty Military and Direct Hire Civilian Personnel
By Installation or City, According to Defense Component: September 30, 1992
West Virginia**

INSTALLATION/ CITY	Military Personnel				Civilian Personnel				TOTAL DEPARTMENT OF DEFENSE	
	Army	Navy	Air Force	Sub- Total	Army	Navy	Air Force	Other DoD Organizations		Sub- Total
	Beckley	147	5	9	161	32				
Charleston	3	54	59	116	69	1	177	3	250	366
Huntington	8	1	2	11	544	4		2	550	561
Martinsburg			54	54	3		200		203	257
Sugar Grove		145		145		40			40	185
Other	20	15	18	53	584	5	2	24	615	668
TOTAL	178	220	142	540	1,232	50	379	29	1,690	2,230

Prepared by: Washington Headquarters Services
Directorate for Information
Operations and Reports

DoD Active Duty Military and Direct Hire Civilian Personnel
By Installation or City, According to Defense Component: September 30, 1992
Wisconsin

INSTALLATION/ CITY	Military Personnel				Civilian Personnel				TOTAL DEPARTMENT OF DEFENSE	
	Army	Navy	Air Force	Sub- Total	Army	Navy	Air Force	Other DoD Organizations		Sub- Total
	Camp Douglas			75	75	67		20		
Camp Williams					179		1		180	180
Fort McCoy	146			146	1,251			35	1,286	1,432
Fountain City					122				122	122
Madison		45	75	120	183	1	231		415	535
Milwaukee	80	149	115	344	141	13	548	115	817	1,161
Other	107	52	20	179	423	60	1	46	530	709
TOTAL	333	246	285	864	2,366	74	801	196	3,437	4,301

Prepared by: Washington Headquarters Services
 Directorate for Information
 Operations and Reports

**DoD Active Duty Military and Direct Hire Civilian Personnel
By Installation or City, According to Defense Component: September 30, 1992
Wyoming**

INSTALLATION/ CITY	Military Personnel			Civilian Personnel				TOTAL DEPARTMENT OF DEFENSE		
	Army	Navy	Air Force	Sub- Total	Army	Navy	Air Force		Other DoD Organizations	Sub- Total
Cheyenne	14	1	61	76	119		187	4	310	386
F.E. Warren AFB			3,389	3,389	1		544	116	661	4,050
Other		1	83	84	87		2	4	93	177
TOTAL	14	2	3,533	3,549	207		733	124	1,064	4,613

Prepared by: Washington Headquarters Services
Directorate for Information
Operations and Reports

**DoD Active Duty Military and Direct Hire Civilian Personnel
By Installation or City, According to Defense Component: September 30, 1992
Undistributed**

INSTALLATION/ CITY	Military Personnel				Civilian Personnel				TOTAL DEPARTMENT OF DEFENSE	
	Army	Navy	Air Force	Sub- Total	Army	Navy	Air Force	Other DoD Organizations		Sub- Total
	Various	15,524	18,530	1,532	35,586			290		
Other										
TOTAL	15,524	18,530	1,532	35,586			290		290	35,876

Prepared by: Washington Headquarters Services
Directorate for Information
Operations and Reports