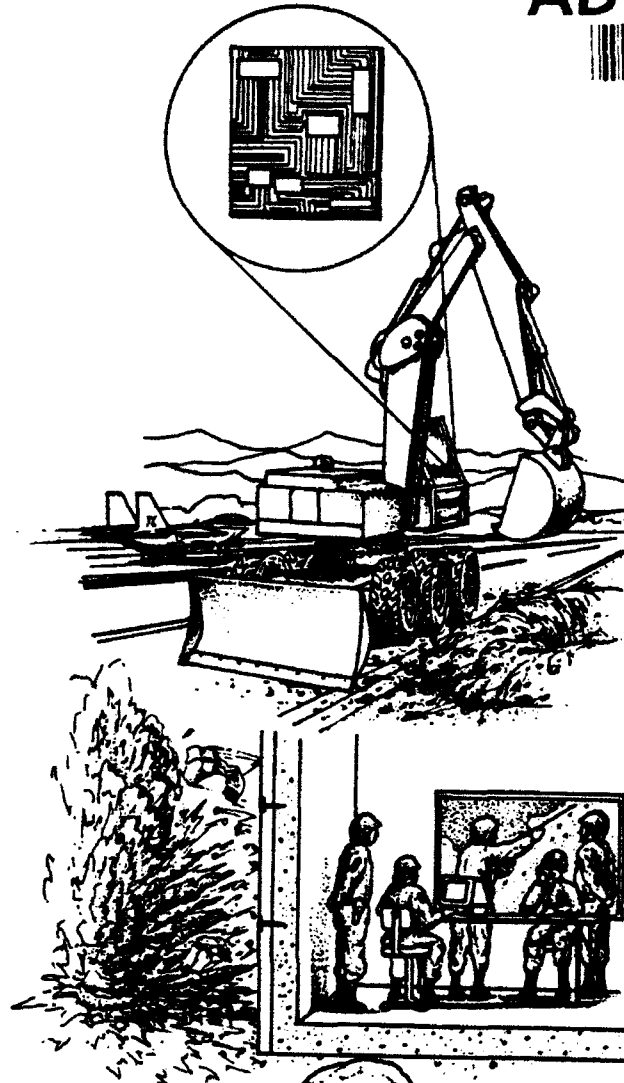


AD-A270 122



ESL-TR-91-22
Volume V

1



**THE POST-DAM SYSTEM
VOLUME V - HARVARD PROJEC
MANAGER (HPM)**

**T.L. WARREN, J.J. HOWARD,
D.H. MERKLE**

**APPLIED RESEARCH ASSOCIATES, INC.,
POST OFFICE BOX 40128
TYNDALL AFB FL 32403**

OCTOBER 1992

FINAL REPORT

FEBRUARY 1989 - MARCH 1991

**APPROVED FOR PUBLIC RELEASE:
DISTRIBUTION UNLIMITED**



**SDTIC
ELECTE
OCT 06 1993
S A D**

93-23072



**ENGINEERING RESEARCH DIVISION
Air Force Civil Engineering Support Agency
Civil Engineering Laboratory
Tyndall Air Force Base, Florida 32403**



93 10 1 142

NOTICE

The following commercial products (requiring Trademark®) are mentioned in The POST-DAM System Volumes 1 through 8. Because of the frequency of usage, the Trademark is not indicated. If it is necessary to reproduce a document segment containing any of these names, this notice must be included as part of that reproduction.

Alarm Clock	Ethernet	MICRORIM
AskSam	Evercom 24	Manifest
AT	Evercom 24 Plus	Miltope
AutoCAD	Fast Graphs	Mitsubishi
AutoCAD 386	Folio Views	MS-DOS
BASICA	FoxBASE Plus	PC
BASIC	FoxPro	PC-DOS
BRIEF Editor	Framework II	PC's Limited
Byline	Framework III	PC's Limited 286
Clarion	Freelance Plus 2	PC Magazine
Crosstalk	Harvard	Personal System/2
Crosstalk Mk.4	Hayes	PS/2
DataEase	Hays Smartmodem 300	QEMM 386
dBASE II	Hays Smartmodem 1200/1200B	R:BASE
dBASE III Plus	Hays Smartmodem 2400/2400B	Telxon
dBASE IV	Hays V-Series Smartmodem 2400	UNIX
DCA	Hays V-Series Smartmodem 9600	WANG
DeskMate	HP	WANG PC 386
DESQview	IBM	XT
DESQview 386	KPC 2400	XON/OFF
DisplayWrite 4	LaserJet	Zoom/Modem MX
DOS Services	Logitech	
Enable	LAN	

Mention of a product listed above does not constitute Air Force endorsement or rejection of that product. Use of information contained herein for advertising purposes, without obtaining clearance according to existing contractual agreements is prohibited.

Screen captures from the Harvard® Manager Version 3.01, including text material, are used with the permission of Software Publishing Corporation, which owns the copyright to such product. Harvard® Project Manager is a trademark of Software Publishing Corporation.

NOTICE

Please do not request copies of this report from
HQ AFESC/RD (Engineering and Services Laboratory).

Additional copies may be purchased from:

Defense Technical Information Center

Cameron Station

Alexandria, Virginia 22314

REPORT DOCUMENTATION PAGE

Form Approved
OMB No. 0704-0188

Public reporting burden for this collection of information is estimated to average 1 hour per response, including the time for reviewing instructions, searching existing data sources, gathering and maintaining the data needed, and completing and reviewing the collection of information. Send comments regarding this burden estimate or any other aspect of this collection of information, including suggestions for reducing this burden, to Washington Headquarters Services, Directorate for Information Operations and Reports, 1215 Jefferson Davis Highway, Suite 1204, Arlington, VA 22202-4302, and to the Office of Management and Budget, Paperwork Reduction Project (0704-0188), Washington, DC 20503.

1. AGENCY USE ONLY (Leave blank)		2. REPORT DATE October 1992	3. REPORT TYPE AND DATES COVERED Draft, 1 February 1989 - 1 March 1991	
4. TITLE AND SUBTITLE The POST-DAM System Volume 5 - Harvard Project Manager (HPM)			5. FUNDING NUMBERS C: F08635-88-C-0067	
6. AUTHOR(S) Thomas L. Warren J. Jeffery Howard Douglas H. Merkle				
7. PERFORMING ORGANIZATION NAME(S) AND ADDRESS(ES) Applied Research Associates, Inc. P.O. Box 40128 Tyndall Air Force Base, FL 32403			8. PERFORMING ORGANIZATION REPORT NUMBER	
9. SPONSORING/MONITORING AGENCY NAME(S) AND ADDRESS(ES) HQ Air Force Civil Engineering Support Agency Tyndall AFB FL 32403			10. SPONSORING/MONITORING AGENCY REPORT NUMBER ESL-TR-91-22 Vol V	
11. SUPPLEMENTARY NOTES				
12a. DISTRIBUTION/AVAILABILITY STATEMENT Approved for public release. Distribution unlimited.			12b. DISTRIBUTION CODE	
13. ABSTRACT (Maximum 200 words) Mission accomplishment in PACAF and USAFE depends on base recovery capability in a postattack environment. Base recovery includes identifying, analyzing, and repairing facility damage. For facilities critical to sortie generation, this process must be accomplished expediently. In a postattack environment, field information on facility damage is collected and analyzed to determine structural integrity and usability. From this analysis, a repair schedule is developed. This is currently a time consuming process that is shortened by using a computerized system. The scope of this effort was to develop a computerized postattack damage assessment system that recommends repair strategies, keeps inventory of materials and equipment, and schedules repairs based on manpower and equipment availability.				
14. SUBJECT TERMS			15. NUMBER OF PAGES	
			16. PRICE CODE	
17. SECURITY CLASSIFICATION OF REPORT UNCLASSIFIED-	18. SECURITY CLASSIFICATION OF THIS PAGE UNCLASSIFIED	19. SECURITY CLASSIFICATION OF ABSTRACT UNCLASSIFIED	20. LIMITATION OF ABSTRACT UL	

EXECUTIVE SUMMARY

A. OBJECTIVE

The objective of this report is to describe the software and hardware of the POST-DAM System, developed by Applied Research Associates, Inc., for airbase facility postattack damage assessment. This report contains descriptions of prototype software and hardware, and recommendations for full-scale development of both software and hardware.

B. BACKGROUND

In a postattack environment, field information on mission-critical facility damage is collected and analyzed to determine structural integrity and usability. From this analysis, a repair schedule is developed. This is a time-consuming process when done without the aid of a computerized system. Consequently, the POST-DAM System was developed to determine repair strategies with an expert system, keep track of materials and equipment with a relational database management system, and schedule repairs based on manpower and equipment availability with a project management system.

C. SCOPE

This technical report consists of nine volumes. Volume I describes software and hardware used with the prototype POST-DAM System, and recommends software and hardware for full-scale development. Volumes II through VIII are software user's manuals, which describe how to install and use the prototype software with the POST-DAM System. Volume IX is a field manual that contains diagrams of structures that are used with the POST-DAM system to locate damaged elements.

D. EVALUATION METHODOLOGY

The prototype POST-DAM System was developed using commercial, off-the-shelf (COTS) software and hardware. The system was constructed by integrating the software and hardware in such a way that a remote computer in the field can communicate with a host computer in the Base Civil Engineering (BCE) Damage Control Center (DCC). The POST-DAM system determines repair strategies, keeps track of materials and equipment, and schedules repairs based on manpower and equipment availability. This prototype system has been evaluated in-depth, and subsequent recommendations are made herein about software and hardware that should be used for full-scale development.

E. CONCLUSIONS

The prototype POST-DAM System is functional, but has limitations with respect to both hardware and software. The following problems were encountered:

1. The prototype remote computer is not portable, and cannot be used in the field. No satisfactory, hand-held remote terminal was available for this project.

2. The expert system cannot hold all the information required for full-scale development, because it cannot use extended memory.

3. Both the relational database management system and project management system require more human interaction than desired.

4. The communication system software is not compatible with the Survivable Base Recovery After Attack Communication System (SBCS) being developed for ESD by Sumaria Systems, Inc., with which the POST-DAM System is required to interface.

F. RECOMMENDATIONS

For full-scale development, the following features should be incorporated in the POST-DAM System.

1. Replace the prototype remote computer with a hand-held terminal unit having at least 2 Mb of random access memory, and which can run applications requiring 640 Kb of base memory.

2. Replace the prototype host computer with a system having at least 4 Mb of random access memory, IEEE 802.3 LAN ports, and able to support multi-tasking operations.

3. Replace the CLIPS expert system shell with an expert system shell capable of supporting applications at least twice as large as those developed for the prototype system.

4. Set the host computer up to interface with the IEEE 802.3 Ethernet local area network (LAN) used by SBCS.

5. Construct a single computer program to replace the relational database management system and the project management system, to minimize the required amount of human intervention. This system should be developed by personnel with a strong background in computer science.

PREFACE

This report was prepared by Applied Research Associates, Inc. (ARA), P.O. Box 40128, Tyndall Air Force Base, FL 32403, under Contract F08635-88-C-0067, for the Air Force Civil Engineering Support Agency, Tyndall Air Force Base, Florida.

This report (Volumes I through IX) summarizes work completed between 1 February 1989 and 1 March 1991. Lt. James Underwood (USN) was the HO AFCESA/RACS Project Officer.

This report has been reviewed by the Public Affairs Office, and is releasable to the National Technical Information Service (NTIS). At NTIS it will be available to the public, including foreign nations.

This technical report has been reviewed and is approved for publication.



Dan Shenbach, Maj., IAF
Project Officer



Felix Uhlik, Lt. Col., USAF
Chief, Engineering Research Division



William S. Strickland
Chief, Airbase Survivability Branch



Frank P. Gallagher, III, Col., USAF
Director, Civil Engineering Laboratory

DTIC QUALITY INSPECTED 2

Accession For	
NTIS CRA&I	<input checked="" type="checkbox"/>
DTIC TAB	<input type="checkbox"/>
Unannounced	<input type="checkbox"/>
Justification	
By	
Distribution /	
Availability Codes	
Dist	Availability or Special
A-1	

TABLE OF CONTENTS

Section	Title	Page
1	INTRODUCTION.....	1
1.1	OBJECTIVE.....	1
1.2	BACKGROUND.....	1
1.3	APPROACH.....	1
2	APPLICABLE DOCUMENTS.....	3
2.1	SETA CONTRACT.....	3
2.2	POST-DAM SYSTEM USER'S MANUALS.....	3
2.3	SOFTWARE USER'S MANUALS.....	3
3	INSTRUCTIONS FOR USE.....	5
3.1	INSTALLING HPM.....	5
3.1.1	System Configuration.....	5
3.1.2	Installing HPM Files.....	5
3.2	STARTING THE HPM SYSTEM.....	5
3.3	USING HPM.....	7
3.3.1	Starting a New Project.....	7
3.3.1.1	Removing Old Projects.....	7
3.3.1.2	Resources.....	7
3.3.1.3	Creating a Project.....	7
3.3.1.3.1	Exprepair Calendar.....	10
3.3.1.3.2	Timescale.....	10
3.3.1.4	Saving the Fast Track Project Form.....	14
3.3.1.5	Exiting Fast Track.....	14
3.3.2	Exiting HPM from the Main Menu.....	14
3.3.3	Editing a Project.....	14
3.3.3.1	Adding Repairs.....	14
3.3.3.2	Adding Multiple Facilities.....	26
3.3.3.3	Resource Conflicts.....	30
3.3.3.4	Deleting a Repair.....	33
3.3.4	Output.....	33
3.3.4.1	Allocations by Task Text Report.....	34
3.3.4.2	Resources by Time Text Report.....	34
3.3.4.3	Fast Track Chart Graphics Report.....	37

LIST OF FIGURES

Figure	Title	Page
3.1	HPM Title Screen.....	6
3.2	Main Menu.....	6
3.3	Project List.....	8
3.4	Files Menu.....	8
3.5	Remove Project.....	9
3.6	Resource List.....	9
3.7	Fast Track Display.....	10
3.8	Data Menu.....	11
3.9	Project Form.....	11
3.10	Project Form with EXPREPAIR Calendar.....	12
3.11	Format Menu.....	12
3.12	Fast Track Display Form.....	13
3.13	Fast Track Display Form Using Hours.....	13
3.14	Other Menu.....	15
3.15	Save Project Window.....	15
3.16	Save Project as POSTDAM Display.....	16
3.17	Project List.....	16
3.18	Files Menu.....	17
3.19	Save Project.....	17
3.20	Edit a Project.....	18
3.21	Repair Strategy File.....	19
3.22	Edit Menu.....	20
3.23	Building 1 Added to the Notes Section.....	20
3.24	Add Task Window.....	21
3.25	Entering the Task wbl1.....	21
3.26	Fast Track Form with the wbl1 Repair.....	22
3.27	Fast Track Form with the wbl1 and cs11 Repairs.....	23
3.28	Work Breakdown Outline.....	23
3.29	Changing the wbl1 Planned Duration to Res.....	24
3.30	Changing the Planned Duration for All Repairs to Res.....	24
3.31	Fast Track Form with Cursor on wbl1.....	25
3.32	Allocation List for wbl1.....	25
3.33	Adding sc Machine to the wbl1 Allocation List.....	26
3.34	Changing Working hrs/day to 24.0.....	27
3.35	Starting a New Row in the wbl1 Allocation List.....	27
3.36	Finished Allocation List for wbl1.....	28
3.37	Fast Track Form with wbl1 Scheduled.....	28
3.38	Allocation List for cs11.....	29
3.39	Schedule of Repairs for Building 1.....	29
3.40	Schedule of Repairs for Buildings 1 and 2.....	30
3.41	Schedule of Repairs with Resource Conflicts.....	31
3.42	Allocations for fr13.....	31
3.43	Allocations for cs13.....	32
3.44	Moving Task Window.....	32
3.45	Schedule of Repairs for Buildings 1, 2, and 3.....	33
3.46	Remove Task Window.....	34
3.47	Reports Form.....	35

LIST OF FIGURES
(Concluded)

Figure	Title	Page
3.48	Print Options Menu.....	35
3.49	Text Report Option Window.....	36
3.50	Disk File pdat1.....	36
3.51	Allocations by Task Output.....	37
3.52	Disk File pdrt1.....	38
3.53	Resources by Time Output.....	38
3.54	Graphics Report Options Window.....	39
3.55	Print File pdft1.....	39
3.56	Fast Track Chart Output.....	40

SECTION 1

INTRODUCTION

1.1 OBJECTIVE

The objective of this software user's manual (SUM) is to explain the procedures for using the Harvard Project Manager (HPM) project-management system with the POST-DAM Relational Data Base Management System (RDBMS), and TED 1.1 Text Editor to schedule repairs based on equipment and manpower availability. HPM is a complete project management package for planning and tracking projects of any complexity. However, only the project management tools and techniques used with POST-DAM are discussed in this SUM.

1.2 BACKGROUND

HPM allows the user to schedule expedient repairs to mission-critical facilities in a postattack environment. HPM is a commercial project management system distributed by Software Publishing Corporation. It is menu-driven, and designed for use on the IBM PC and compatible computers.

1.3 APPROACH

After a group of repairs is selected for a facility, the user activates HPM from POST-DAM RDBMS, using DESQview 386 as described in Section 3.4 of Document 2.2.3. The user then enters the facility number, required repairs, and required equipment and manpower for each repair. For each repair, the user selects the time at which the repair will start, and HPM then determines the repair duration based on manpower and equipment requirements. For each structure the repairs are scheduled consecutively to reduce repair team relocation time. However, repairs to different structures can be scheduled concurrently, provided there are no over-allocations. If over-allocations exist, HPM will alert the user, and repairs can be re-scheduled to eliminate the conflict. After repairs are scheduled for a facility, the user exits HPM using DESQview 386, and runs TED 1.1 to update the repair strategy file, as described in Document 2.2.6.

SECTION 2
APPLICABLE DOCUMENTS

2.1 SETA CONTRACT

2.1.1 Postattack Damage Assessment of Facilities, Subtask 2.02, Air Force Engineering and Services Center, SETA Contract F08635-88-C-0067, December 87.

2.1.2 Postattack Damage Assessment of Facilities, Subtask 2.02.1, Air Force Engineering and Services Center, SETA Contract F08635-88-C-0067, October 88.

2.1.3 Postattack Damage Assessment of Facilities, Subtask 2.02.2, Air Force Engineering and Services Center, SETA Contract F08635-88-C-0067, February 89.

2.2 POST-DAM SYSTEM USER'S MANUALS

2.2.1 The POST-DAM System, Volume 1, Introduction to the POST-DAM System, Applied Research Associates, Inc., Report to AFESC, March 91.

2.2.2 The POST-DAM System, Volume 2, Software User's Manual for the Expert System, Applied Research Associates, Inc., Report to AFESC, February 91.

2.2.3 The POST-DAM System, Volume 3, Software User's Manual for DESQview 386, Applied Research Associates, Inc., Report to AFESC, December 90.

2.2.4 The POST-DAM System, Volume 4, Software User's Manual for the Relational Data Base Management System, Applied Research Associates, Inc., Report to AFESC, December 90.

2.2.5 The POST-DAM System, Volume 6, Software User's Manual for Crosstalk Mk.4 on the Host Computer, Applied Research Associates, Inc., Report to AFESC, December 90.

2.2.6 The POST-DAM System, Volume 7, Software User's Manual for the TED 1.1 Editor, Applied Research Associates, Inc., Report to AFESC, December 90.

2.2.7 The POST-DAM System, Volume 8, Software User's Manual for Crosstalk Mk.4 on the Remote Computer, Applied Research Associates, Inc., Report to AFESC, March 91.

2.2.8 The POST-DAM System, Volume 9, Field Manual of Mission-Critical Facilities for Use with the Prototype POST-DAM System, Applied Research Associates, Inc., Report to AFESC, March 91.

2.3 SOFTWARE USER'S MANUALS

2.3.8 Harvard Project Manager 3.0 User's Manual, Software Publishing Corporation, 1988.

SECTION 3
INSTRUCTIONS FOR USE

3.1 INSTALLING HPM

3.1.1 System Configuration

HPM is designed to run with PC-DOS 2.0 or higher on the IBM PC, or a 100 percent compatible microcomputer with 512 K random access memory (RAM), color or monochrome monitor, hard disk, and 5.25-inch floppy disk drive. HPM is also designed to interface with most commercial printers. Further information about HPM system requirements is given in Document 2.3.8.

To run HPM, the computer needs a DOS config.sys file, with a FILES command accommodating at least 20 open files. Before installing HPM, be sure the following command is in the config.sys file:

FILES=N

where N is no smaller than 20.

3.1.2 Installing HPM Files

HPM files are copied directly from the five HPM program disks into a single subdirectory in the hard disk root directory. Starting from the hard disk root directory, use the DOS MAKE DIRECTORY command to create the subdirectory HPM by typing

C:\>md\hpm [Enter]

where C is the hard disk root directory, highlighted characters are typed by the user, and [Enter] means press the enter key after typing the command. Next, using the DOS CHANGE DIRECTORY command, change to the subdirectory HPM by typing

C:\>cd\hpm [Enter]

Next, copy the files from the five HPM program disks by inserting one program disk at a time into floppy disk drive A:, and typing

C:\hpm>copy a:*. * [Enter]

until all five disks have been copied into the HPM subdirectory.

3.2 STARTING THE HPM SYSTEM

HPM is executed from the DESQview 386 utility. This process is described in Section 3.4 of Document 2.2.3. After starting HPM, the title screen appears as shown in Figure 3.1, then the main menu appears as shown in Figure 3.2.

HARVARD Project Manager

Figure 3.1. HPM Title Screen.

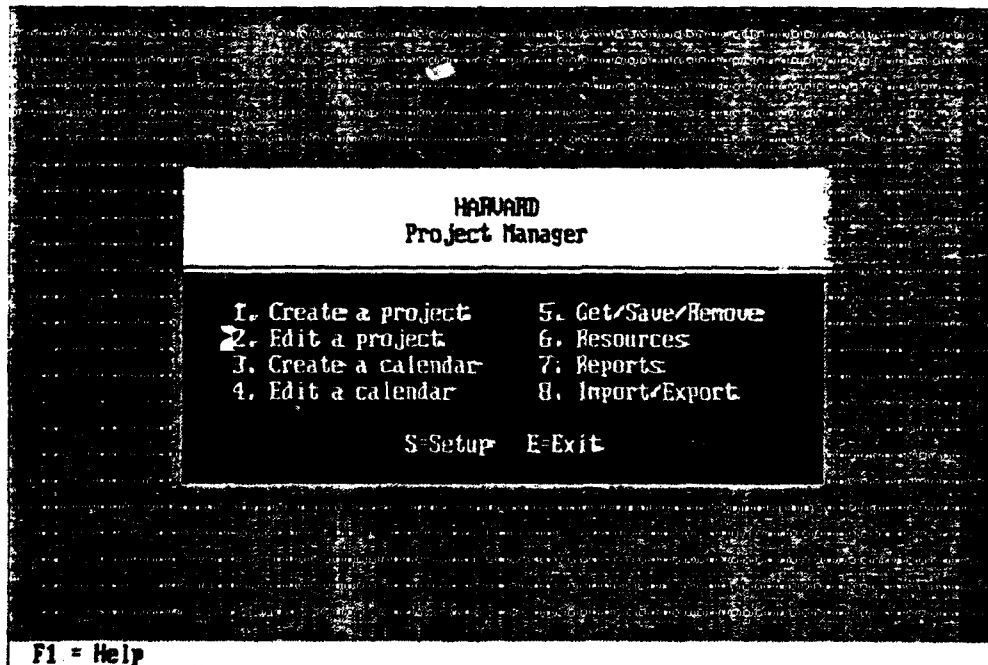


Figure 3.2. Main Menu.

3.3 USING HPM

This section of the SUM tells how to use HPM with POST-DAM RDBMS and TED 1.1 to schedule repairs to mission-critical facilities.

3.3.1 Starting a New Project

After entering the HPM Main Menu for the first time from RDBMS, using DESQview 386, the user must remove all old versions of the project "POSTDAM.PRJ," check that all resources are current, define a new project, and save the new project.

3.3.1.1 Removing Old Projects

To remove old projects, the user selects Option 5, "Get/Save/Remove," in the main menu. This is accomplished by either pressing the [5] key, or using the arrow keys to move the cursor to Option 5 and pressing [Enter]. The project list then appears on the screen, as shown in Figure 3.3, with the cursor pointing to the file POSTDAM.PRJ. To remove this file, the user presses the [F2] key, which displays the list of options shown in Figure 3.4. The user then selects Option 3 by pressing the [3] key, or using the arrow keys to move the cursor to Option 3 and pressing [Enter]. The user is then prompted to remove the project by pressing [F10], or to save the project by pressing [Esc], as shown in Figure 3.5. By pressing [F10], the file POSTDAM.PRJ is removed, and the user is returned to the project list. The user then exits the project list by pressing [Esc], and is returned to the main menu.

3.3.1.2 Resources

To check the available resource list, the user selects Option 6 "Resources" in the main menu. This is accomplished by either pressing the [6] key, or using the arrow keys to move the cursor to Option 6 and pressing [Enter]. The HPM resource list then appears on the screen, as shown in Figure 3.6, with the cursor pointing to "bulldozer". The user then manually compares the HPM resource list with the RDBMS resource list described in Section 3.3.1.6.5 of Document 2.2.4. The cursor is moved around the resource list by using the arrow keys to move it up and down, and the [Tab] and [Shift] [Tab] keys to move it to the right and left respectively. The resource list is edited by typing over the existing data, and [Esc] returns the user to the HPM main menu.

3.3.1.3 Creating a Project

To create a new project, the user selects Option 1, "Create a Project," in the main menu. This is accomplished by either pressing the [1] key, or using the arrow keys to move the cursor to Option 1 and pressing [Enter]. The fast track display then appears on the screen, as shown in Figure 3.7. At this point, the user must define the "EXPREPAIR" calendar and a time scale for the new POST-DAM project.

F1-Help F2-Files F3-Directories			
Project	Description	Calendar	Status
*POSTDAM.FAJ		DCPREPAIR	

Project list - Get 1x Full

Figure 3.3. Project List.

F1-Help F2-Files F3-Directories			
Project	Description	Calendar	Status
*POSTDAM.FAJ		DCPREPAIR	

- 1. Get project C
- 2. Save project C (Ctrl S)
- 3. Remove project C
- 4. Remove project C
- 5. Remove project C

- 6. Get calendar
- 7. Save calendar
- 8. Remove calendar
- 9. Remove calendar
- 0. Remove calendar

Project list - Get 1x Full

Figure 3.4. Files Menu.

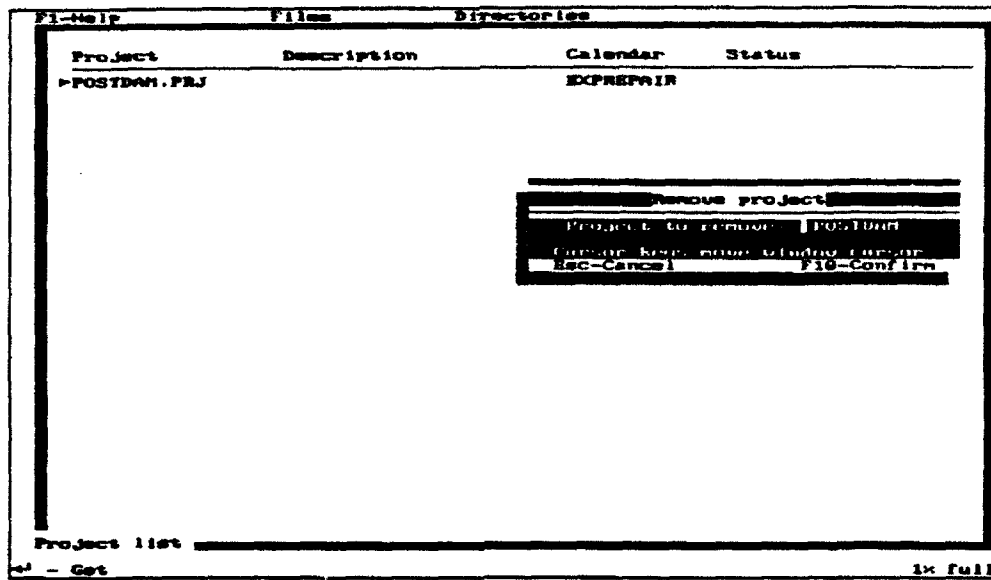


Figure 3.5. Remove Project.

Resource	Quantity	Cost/unit	Time Units	Resource calendar	Hourly Overtime rate
bulldozer	5.000	0.00	Hrs		0.00
taxi	25.000	0.00	Hrs		0.00
repair team	2.000	0.00	Hrs		0.00
sc machine	50.000	0.00	Hrs		0.00
shoring Jack	1.000	0.00	Dns		0.00

Resource list

POSTDAM: full

Figure 3.6. Resource List.

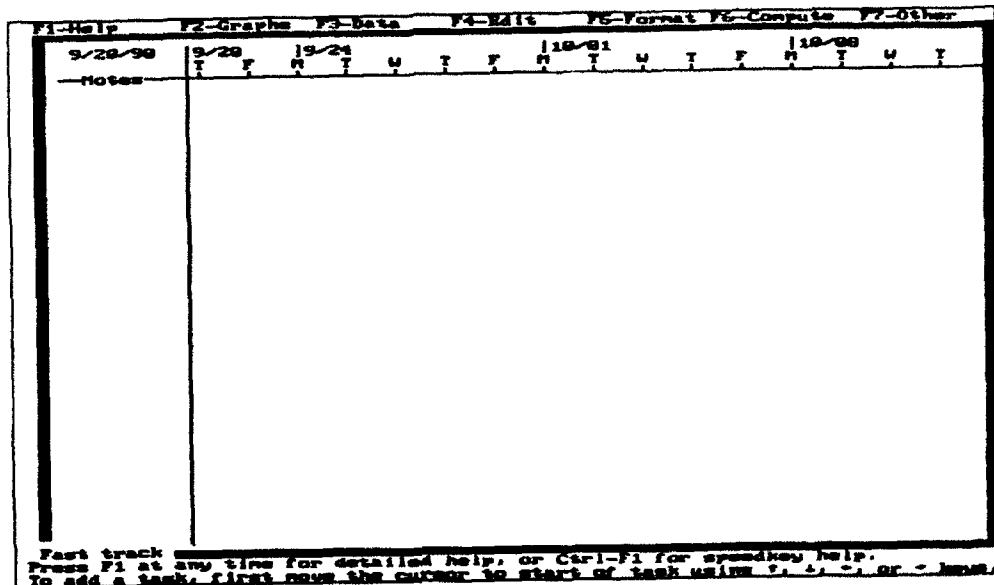


Figure 3.7. Fast Track Display.

3.3.1.3.1 Exprepair Calendar

After entering the Fast Track Form, the user must change the project calendar from the standard calendar to the exprepair calendar. This is done by pressing the [F3] key, which displays the "Data" Menu, as shown in Figure 3.8. The user then selects Option 6 "Project Form" by either pressing the [6] key or using the arrow keys to move the small arrowhead to Option 6 and pressing [Enter]. The project form then appears on the screen, as shown in Figure 3.9, with the cursor in the Planned Start Section. The user then moves the cursor to the Calendar Section by using the arrow keys and the [Tab] key. At the Calendar Section, the user types "EXPREPAIR" over "STANDARD," as shown in Figure 3.10. The user saves the calendar, and returns to the Fast Track Form by pressing the [F10] key.

3.3.1.3.2 Timescale

To change the time scale, the user starts at the Fast Track Form and presses the [F5] key, which displays the "Format" Menu, as shown in Figure 3.11. The user selects Option 4 "Fast Track Display" by either pressing the [4] key, or using the arrow keys to move the small arrow head to Option 4 and pressing [Enter]. The Fast Track Display Form then appears on the screen, as shown in Figure 3.12, with the small arrowhead pointing to Dys. The user moves the arrowhead to Hrs by pressing the left arrow key, as shown in Figure 3.13. The user saves the new time scale, and returns to the Fast Track Form by pressing the [F10] key.

F1-Help F2-Graphs F3-Data F4-Edit F5-Format F6-Compute F7-Other

9/24/90 9/24

Notes

1. Task List
2. Resource List
3. Allocation List
4. Work breakdown structure

5. Task form
6. Project form
7. Project calendar form
8. Resource calendar form

W T F M

Fast track

POSTION: 4% CALL

Figure 3.8. Data Menu.

Esc-Cancel F10-Confirm

Planned start: 24-Sep-1990 Responsible Calendar: STANDARD

Planned finish: 24-Sep-1990 Act overhead cost: 0.00

Pin overhead cost: 0.00

Schedule (SLAP/RSAP): Duration (Horr/Res): Default units: Minimum slack: Show times:

Penalty Cost of: 0.00 per hour after 0.00

Description	Start	Finish	Duration	Res work
Planned	24-Sep-1990	24-Sep-1990	0.00 Dye U	0.00 Dye U
Actual (None)	(None)	(None)	(None)	0.00 Dye U
Baseline (None)	(None)	(None)	(None)	(None)
x Complete	0	Slack	0.00 Dye U	

	Overhead	Resource	Other	Total cost
Planned	0.00	0.00	0.00	0.00
Actual	0.00	0.00	0.00	0.00
Projected	0.00	0.00	0.00	0.00

<Unsaved> project form

Fast track

4% CALL

Figure 3.9. Project Form.

Esc-Cancel F10-Confirm

Planned start 24-Sep-1990 Responsible Calendar EXPREPAIR
 Planned finish 24-Sep-1990 Act overhead cost 0.00

Schedule (ALAP/ASAP) (None) Default units (None) Minimum slack 0.00 Show times (None)
 Duration (None/Res) (None)

Penalty Cost of 0.00 per (Dys W) after 24-Sep-1990

Description	Start	Finish	Duration	Res work
Planned	24-Sep-1990	24-Sep-1990	0.00 Dys W	0.00 Dys W
Actual (None)	(None)	(None)	(None)	0.00 Dys W
Baseline (None)	(None)	(None)	(None)	(None)
x Complete	0	Slack 0.00 Dys W		

	Overhead	Resource	Other	Total cost
Planned	0.00	0.00	0.00	0.00
Actual	0.00	0.00	0.00	0.00
Projected	0.00	0.00	0.00	0.00

<Unsaved> project form
 Fast track

4K full

Figure 3.10. Project Form with EXPREPAIR Calendar.

F1-Help F2-Graphs F3-Data F4-Edit F5-Format F6-Compute F7-Other

9/24/90 9/24
 Notes I W T F S S

- 1. Split window display
- 2. Switch window
- 3. Split screen
- 4. Split screen display
- 5. Split screen display
- 6. Split screen display
- 7. Top PLOT chart/Bottom chart
- 8. Split screen display
- 9. Task list display
- 0. Work breakdown outline display

Fast track

POSTPRN:4K full

Figure 3.11. Format Menu.

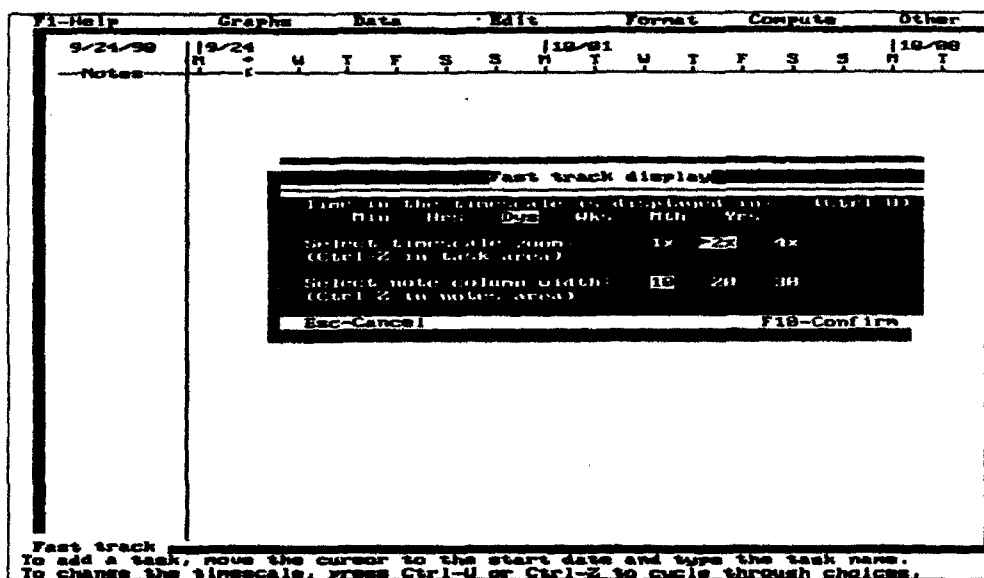


Figure 3.12. Fast Track Display Form.

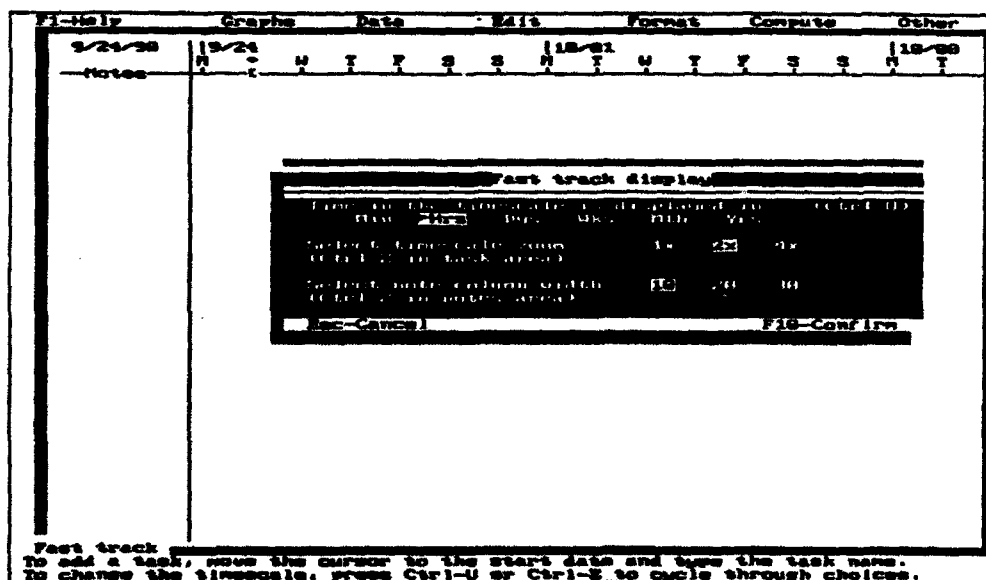


Figure 3.13. Fast Track Display Form Using Hours.

3.3.1.4 Saving the Fast Track Project Form

To save the current Fast Track configuration, the user starts at the Fast Track Form and presses the [F7] key, which displays the "Other" Menu, as shown in Figure 3.14. The user selects Option 5 "Quick Save" by either pressing the [5] key, or using the arrow keys to move the small arrowhead to Option 5 and pressing [Enter]. The Save Project Window then appears on the screen, as shown in Figure 3.15, prompting the user for a project name. The user then types "POSTDAM," as shown in Figure 3.16. The user presses the [F10] key, which first saves the project in a file called POSTDAM.PRJ, then returns the user to the Fast Track Form.

3.3.1.5 Exiting Fast Track

To leave the Fast Track Form, the user presses the [Esc] key, and is returned to the HPM main menu.

3.3.2 Exiting HPM from the Main Menu

Before leaving the HPM system from the main menu, the user must save the latest version of the POSTDAM.PRJ file. To save the file, the user selects Option 5 "Get/Save/Remove" in the main menu. This is accomplished by either pressing the [5] key, or using the arrow keys to move the cursor to Option 5 and pressing [Enter]. The project list then appears on the screen, as shown in Figure 3.17, with the cursor pointing to the file POSTDAM.PRJ. To save this file, the user presses the [F2] key, which displays the list of options shown in Figure 3.18. Here, the user selects Option 2 by pressing the [2] key, or using the arrow keys to move the cursor to Option 2 and pressing [Enter]. The user is then prompted as shown in Figure 3.19, to either save the project POSTDAM by pressing the [F10] key, or cancel it by pressing the [Esc] key. Pressing the [F10] key saves the file POSTDAM.PRJ, and returns the user to the project list. The user exits the project list by pressing [Esc], and is returned to the main menu. The user pushes the [E] key, and is returned to the RDBMS program.

3.3.3 Editing a Project

After the POSTDAM.PRJ file has been created, the user can enter HPM and edit the file by using DESQview 386, as described in Section 3.4 of Document 2.2.3. To access the POSTDAM.PRJ file, the user selects Option 2 "Edit a Project" in the main menu. This is accomplished by either pressing the [2] key, or using the arrow keys to move the cursor to Option 2 and pressing [Enter]. The project list then appears on the screen, as shown in Figure 3.20, with POSTDAM.PRJ highlighted. Here, the user presses [Enter], and the Fast Track Form appears on the screen. From the Fast Track Form, the user can add, reschedule, and/or delete repairs.

3.3.3.1 Adding Repairs

Before entering HPM, the user must get a hard copy of the repair strategy file for the mission-critical facility to be repaired. That process is described in Section 3.3.1.7.1 of Document 2.2.4. An example repair strategy file is shown

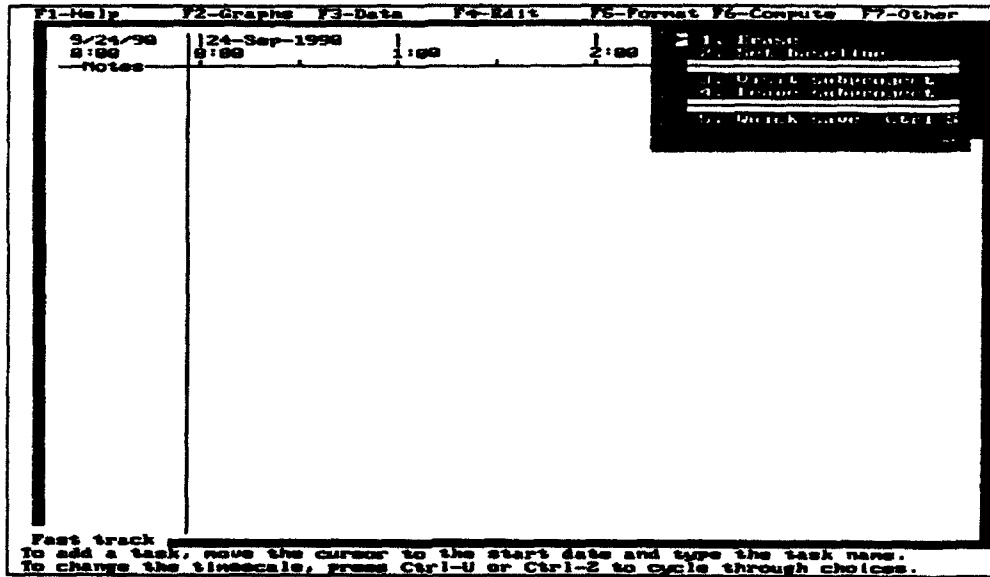


Figure 3.14. Other Menu.

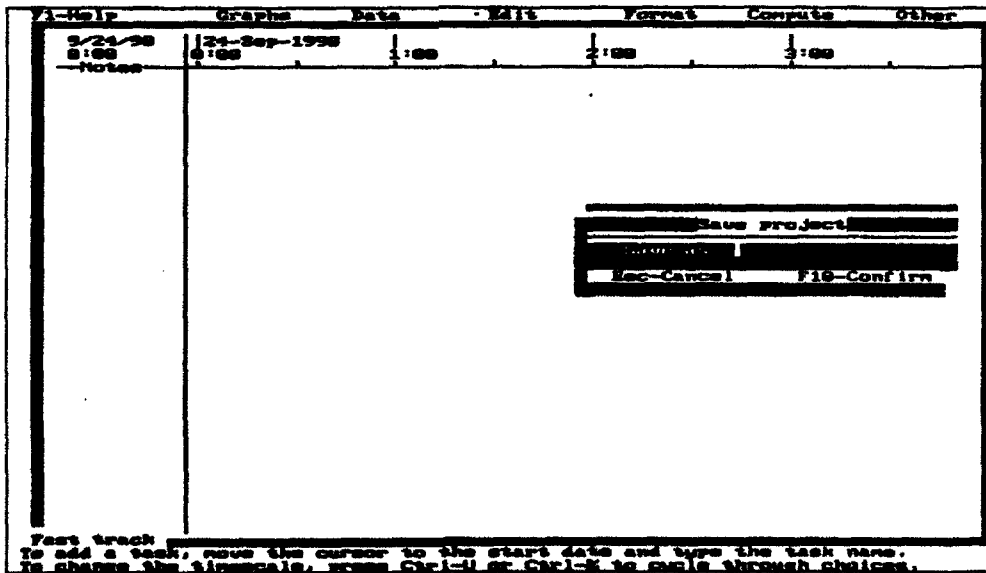


Figure 3.15. Save Project Window.

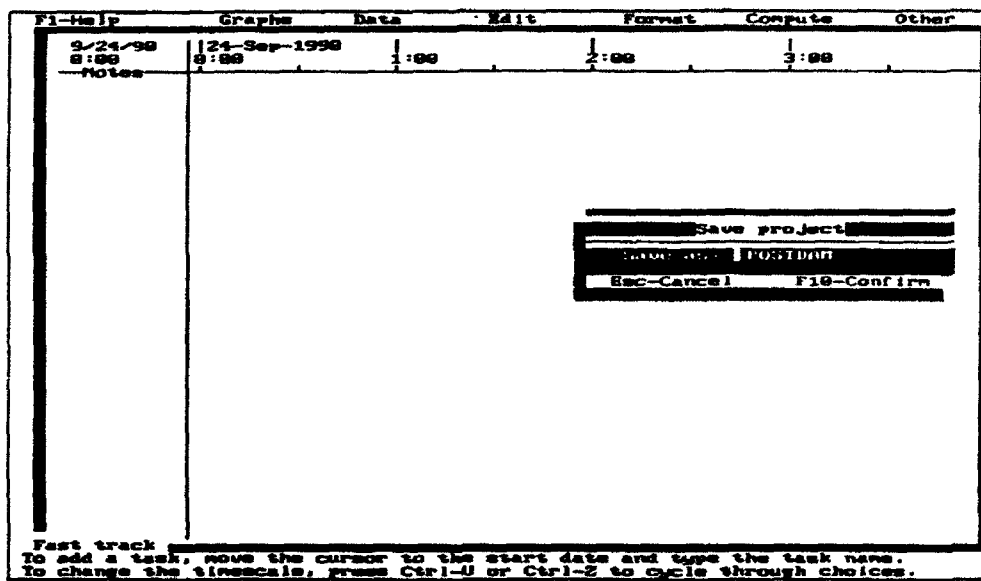


Figure 3.16. Save Project as POSTDAM Display.

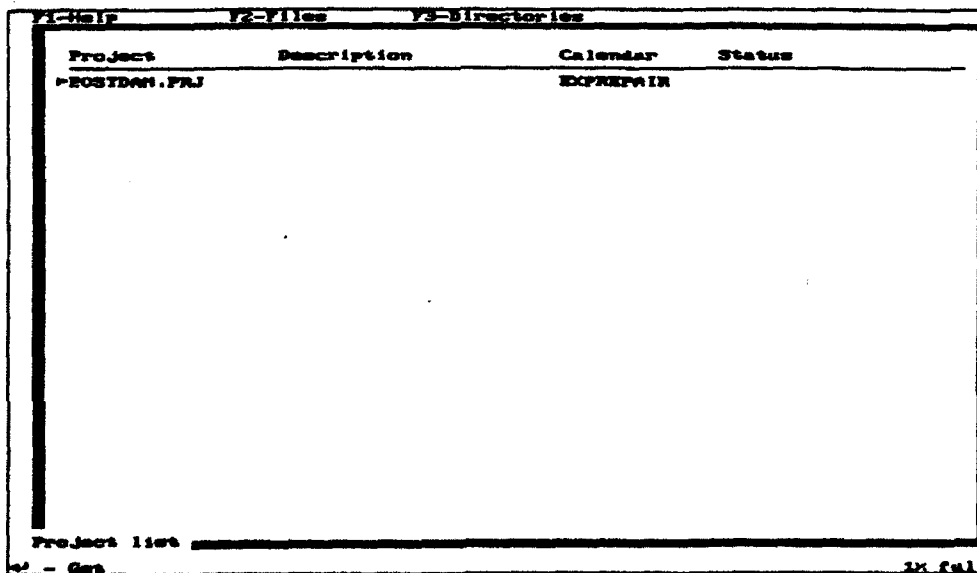


Figure 3.17. Project List.

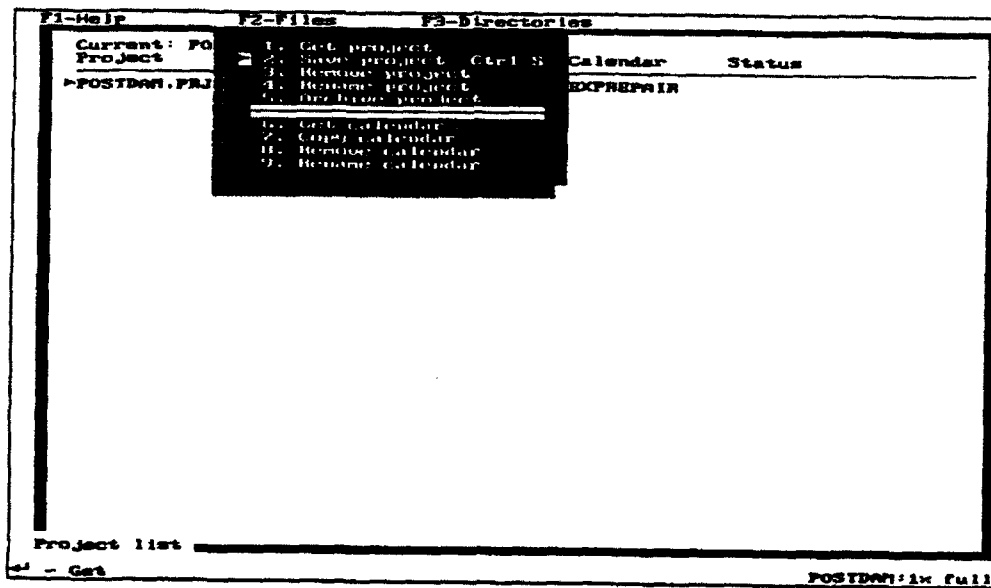


Figure 3.18. Files Menu.

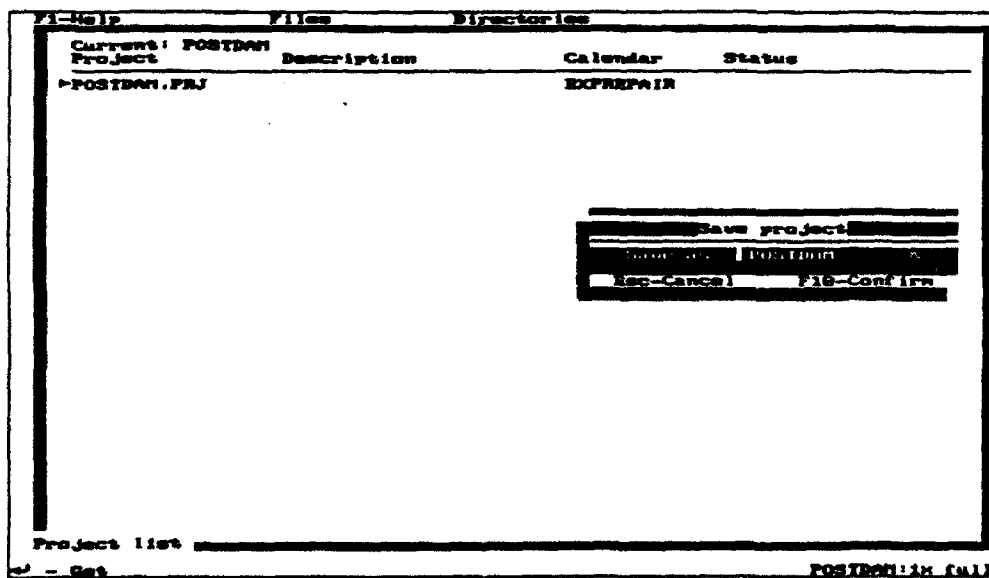


Figure 3.19. Save Project.

Project	Description	Calendar	Status
POSTDAM.PRJ		EXPREPAIR	

Project list

Get

in full

Figure 3.20. Edit a Project.

in Figure 3.21 for "Building 1," which requires a wall breach repair, and a column splint repair.

The repairs required by a mission-critical facility are entered into the POSTDAM.PRJ file from the Fast Track Form. The user begins by pressing the [F4] key, which displays the "Edit" menu shown in Figure 3.22. From the Edit Menu, the user selects Option 7 "Notes," which puts the cursor in the Notes Section of the Fast Track Form. Using the data in Figure 3.21 as an example, the user types the building number in the Notes Section, as shown in Figure 23.

From the Notes Section, the user then presses the [F4] key, which displays the "Edit" Menu, as shown in Figure 3.22. From the Edit Menu, the user selects Option 2 "Add Task," which displays the "Add Task" window shown in Figure 3.24. The first repair on the list is a wall breach, so at the "Task Name" prompt the user types in wb11, as shown in Figure 3.25. The letters wb stands for wall breach; the first 1 after wb means it is the first wall breach in Building 1 to be considered; the second 1 corresponds to the Building Number. In the "Duration" section, "How many time units?" is set to 0.00, and "Which time units?" is set to Hrs. The user then presses the [F10] key, and repair wb11 appears on the Fast Track Form, as shown in Figure 3.26. To add the second task to the repair strategy file, the user returns to the Edit Menu and repeats the

POST-ATTACK DAMAGE ASSESSMENT OF
FACILITY NUMBER 1
BITSBURG AIR BASE, GEORGIA

I.) GENERAL FACILITY INFORMATION

Function : "Mission Control Center"
Priority : 1
Description : "Three Story Reinforced Concrete Structure"

II.) DAMAGE ASSESSMENTS

Damage Assessment Number : 1

A.) General Element Information

Element Number : 100
Element Description : EXTERIOR WALL
Damage Mode : WALL BREACH
Damaged Width : 12.0 ft.
Damaged Height : 8.0 ft.
Repair Strategy : SHOTCRETE

B.) Expedient Repair Information

1.) Repair Strategy :

SHOTCRETE

2.) Required Materials :

2x4 : 25.0 ft.
Plywood : 53.3 sq. ft.
Wire Mesh : 32.0 sq. ft.
Shotcrete : 1.8 cubic yards
Water : 60.0 gallons

3.) Required Equipment :

Shotcrete machine : 1
Ramsset : 2
Repair Team : 1

4.) Estimated Repair Time :

Repair Team Hours : 1.7

5.) Remarks :

Broken gas lines in the area.

6.) Start Repair :

Finish Repair :

Damage Assessment Number : 2

A.) General Element Information

Element Number : 600
Element Description : COLUMN
Damage Mode : CRACKING/STEEL DEBONDING
Repair Strategy : COLUMN SPLINT

B.) Expedient Repair Information

1.) Repair Strategy :

COLUMN SPLINT

2.) Required Materials :

Column Splint : 1

3.) Required Equipment :

Repair Team : 1

4.) Estimated Repair Time :

Repair Team Hours : 0.50

5.) Remarks :

6.) Start Repair :

Finish Repair :

Figure 3.21. Repair Strategy File.

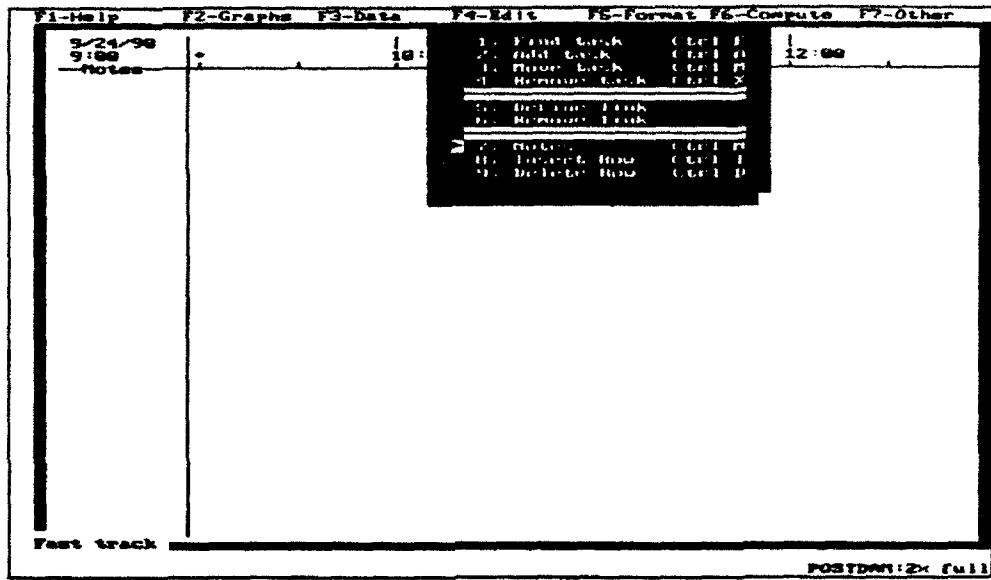


Figure 3.22. Edit Menu.

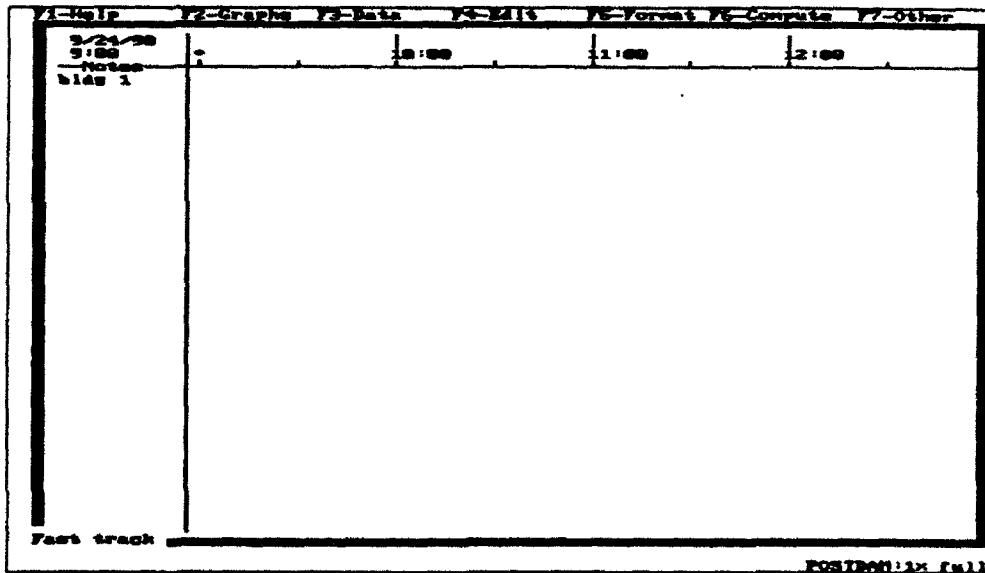


Figure 3.23. Building 1 Added to the Notes Section.

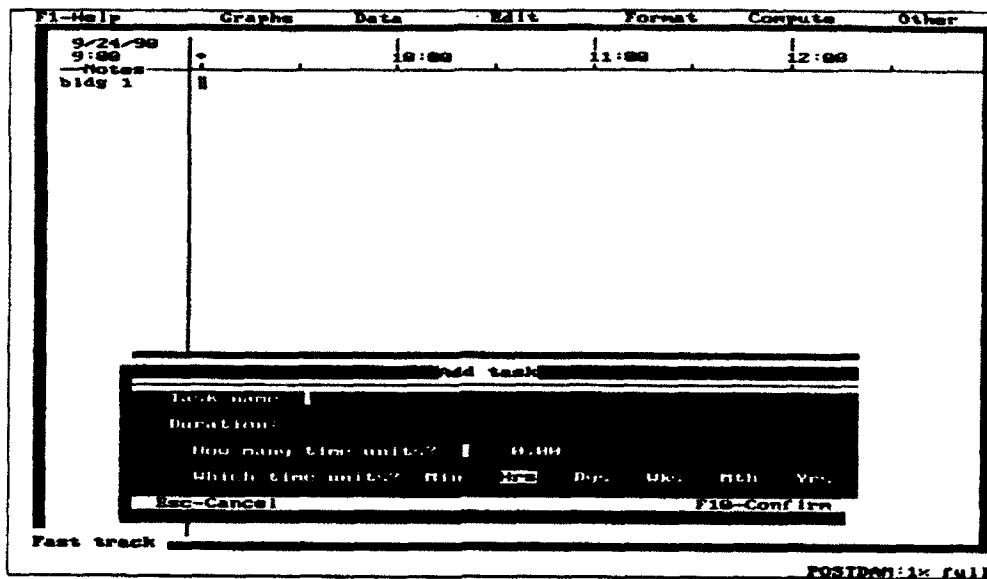


Figure 3.24. Add Task Window.

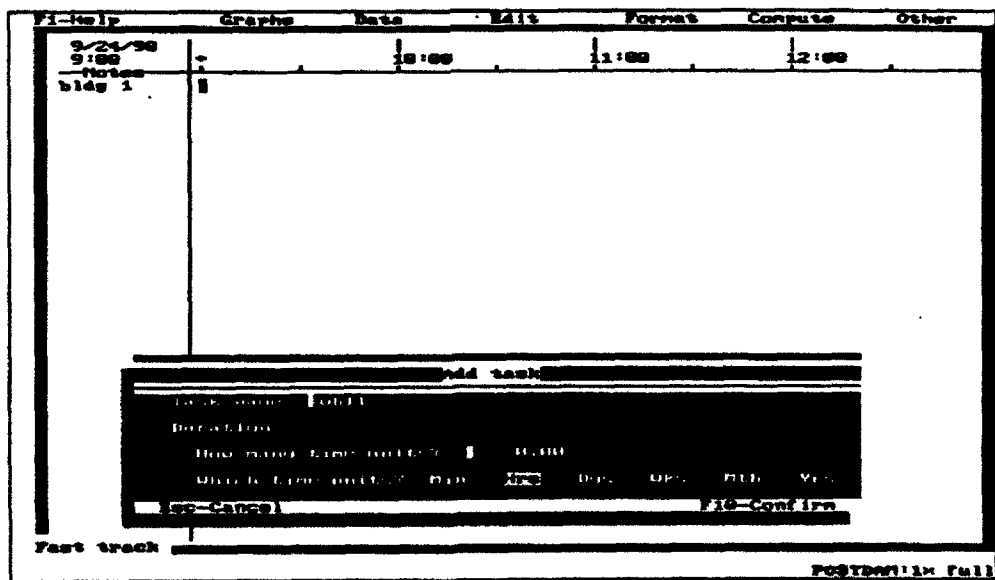


Figure 3.25. Entering the Task wbl1.

F1-Menu	F2-Graphs	F3-Data	F4-Edit	F5-Format	F6-Compute	F7-Other
8-24-90			10:00	11:00	12:00	
Notes						
bidg 1		wb11				

Fast track

Needs Calc POSTDEF:4k full

Figure 3.26. Fast Track Form with the wb11 Repair.

above process, but using the task name cs11, which stands for the first column splint repair in Building 1. The two repairs then appear in the Fast Track Form, as shown in Figure 3.27.

The duration of a repair is determined by the available equipment and labor. To do this, the user presses [F3], which displays the Data Menu shown in Figure 3.8. From the Data Menu, the user selects Option 4, "Work Breakdown Outline," which displays the work breakdown outline shown in Figure 3.28, with the cursor on wb11. Using the [Tab] key, the user moves the cursor to the planned duration column, and types res (abbreviation for resource) over the existing data, then uses the [Delete] key to remove the remaining data, as shown in Figure 3.29. The user then presses the [Enter] key to confirm the planned duration, then repeats the procedure for cs11, as shown in Figure 3.30. The user then returns to the Fast Track Form by pressing the [Esc] key twice.

Equipment and labor are now allocated to the repairs. By using the arrow keys, the user places the cursor at the small square in the Fast Track Form, so wb11 is in the lower left corner, as shown in Figure 3.31. The user then presses the [F3] key, which displays the Data Menu shown in Figure 3.8. From the Data Menu, the user selects Option 3 "Allocations List," which displays the allocation list for repair wb11, as shown in Figure 3.32. Using the information from Figure 3.21, the user types sc machine (abbreviation for shotcrete machine) in the resource column, as shown in Figure 3.33. Next using the [Tab] key to move

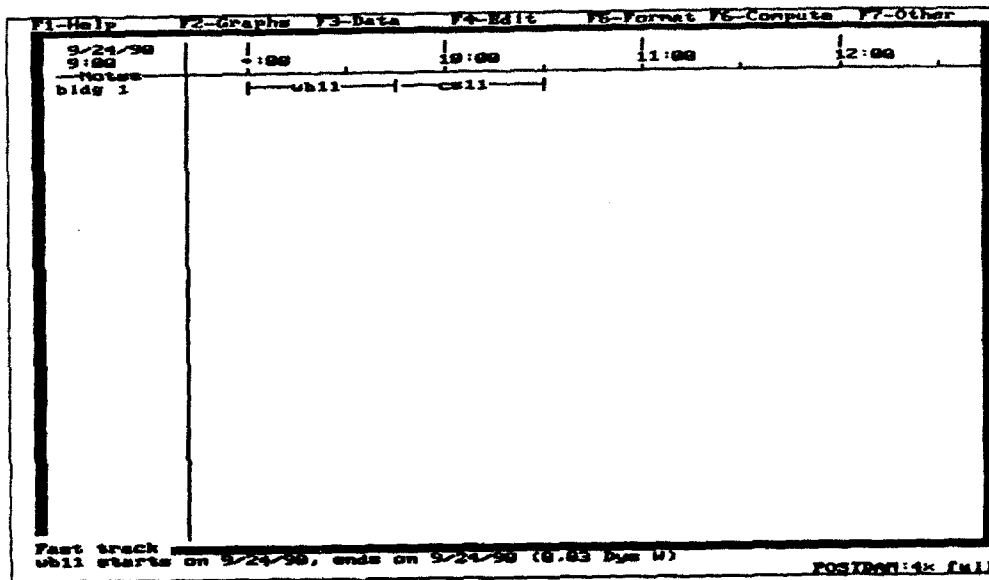


Figure 3.27. Fast Track Form with the wb11 and cs11 Repairs.



Figure 3.28. Work Breakdown Outline.

Name	Lvl	Planned duration	WB Code	Resp
-wb11	1	res	1	
-cell	0	0.00 Dye U	2	

Mark breakdown outline
Fast track

POSITION: ex full

Figure 3.29. Changing the wb11 Planned Duration to res.

Name	Lvl	Planned duration	WB Code	Resp
-wb11	1	res	MIN	
-cell	1	0.00 Dye U		

Mark breakdown outline
Fast track

POSITION: ex full

Figure 3.30. Changing the Planned Duration for all Repairs to res.

F1-Help		F2-Graphs		F3-Data		F4-Edit		F5-Format		F6-Compute		F7-Other	
9/24/80		1:00		10:00		11:00		12:00					
Notes													
wb1													
Fast track wb1 starts on 9/24/80, ends on 9/24/80 (6.00 Dyr 4)													
												POSTDWN:3: full	

Figure 3.31. Fast Track Form with Cursor on wb1.

F1-Help		F2-Graphs		F3-Data		F4-Edit		F5-Format		F6-Compute		F7-Other	
Resource	Quantity	Work units	Lag start	Planned work	Actual work	Remaining work	More						
	1.000	Dyr	0.00	0.00	0.00	0.00							
wb1 allocations													POSTDWN:3: full

Figure 3.32. Allocation List for wb1.

Resource	Quantity	Work units	Lag start	Planned work	Actual work	More Remaining work
sc machine	1.000	Hrs	0.00	1.75	0.00	0.00

F1-Help F2-Graphs F3-Data F4-Edit F5-Format F6-Compute F7-Other
 wbl1 allocations
 Fast track Needs Calc POSTDATA: Full

Figure 3.33. Adding sc Machine to the wbl1 Allocations List.

between the columns, the user changes Work Units to Hrs, planned work to 1.75 (duration time is rounded off to the nearest quarter hour), and working hrs/day to 24.0, as shown in Figures 3.33 and 3.34. The user then presses [Enter], and is returned to a new row in the resource column, as shown in Figure 3.35. Figure 3.36 shows the completed allocation form for the repair wbl1. When a resource item quantity is greater than 1, the repair duration time must be multiplied by the quantity to obtain the planned work value, has been doubled.

After all required equipment and labor resources have been entered in the wbl1 allocations list, the user presses [Esc], and is returned to the Fast Track Form, as shown in Figure 3.37. The user then positions the cursor at the right end of wbl1, whereupon cs11 appears at the bottom left corner of the Fast Track Form, as shown in Figure 3.37. The above procedure is then repeated for wbl1. The allocations list for cs11 is shown in Figure 3.38, and the Fast Track repair schedule for Building 1 is shown in Figure 3.39.

3.3.3.2 Adding Multiple Facilities

To add a new facility to the Fast Track Form, the user uses the arrow keys to move the cursor to the empty row just below where the last facility was added. The user then follows the same procedure used for Building 1 in Section 3.3.3.1 of this SUM. For example, the second facility, "Building 2," is added to the Fast Track Form, as shown in Figure 3.40, where wbl2 is a wall breach repair, and

F1-Help F2-Graphs F3-Data F4-Edit F5-Format F6-Compute F7-Other							
Resource	Planned work	Actual work	Remaining work	Working hrs/day	Overtime hrs/day	More -- Planned cost	
ac machine	1.75	0.00	0.00	24.00	0.00	0.00	

wbl1 allocations
 Fast track Needs Calc POSTDEF:?? full

Figure 3.34. Changing Working hrs/day to 24.0.

F1-Help F2-Graphs F3-Data F4-Edit F5-Format F6-Compute F7-Other							
Resource	Quantity	Work units	Lag start	Planned work	Actual work	Remaining work	
ac machine	1.000	Hrs	0.00	1.75	0.00	0.00	
	1.000	Dys	0.00	0.00	0.00	0.00	

wbl1 allocations
 Fast track POSTDEF:?? full

Figure 3.35. Starting a New Row in the wbl1 Allocations List.

F1-Help F2-Graphs F3-Data F4-Edit F5-Format F6-Compute F7-Other						
Resource	Quantity	Work units	Lag start	Planned work	Actual work	More Remaining work
sc machine	1.000	Hrs	0.00	1.75	0.00	0.00
repair team	1.000	Hrs	0.00	1.75	0.00	0.00
ranset	2.000	Hrs	0.00	3.50	0.00	0.00
	1.000	Dye	0.00	0.00	0.00	0.00

wbl1 allocations
 Fast track
 POSTMAN:2: full

Figure 3.36. Finished Allocations List for wbl1.

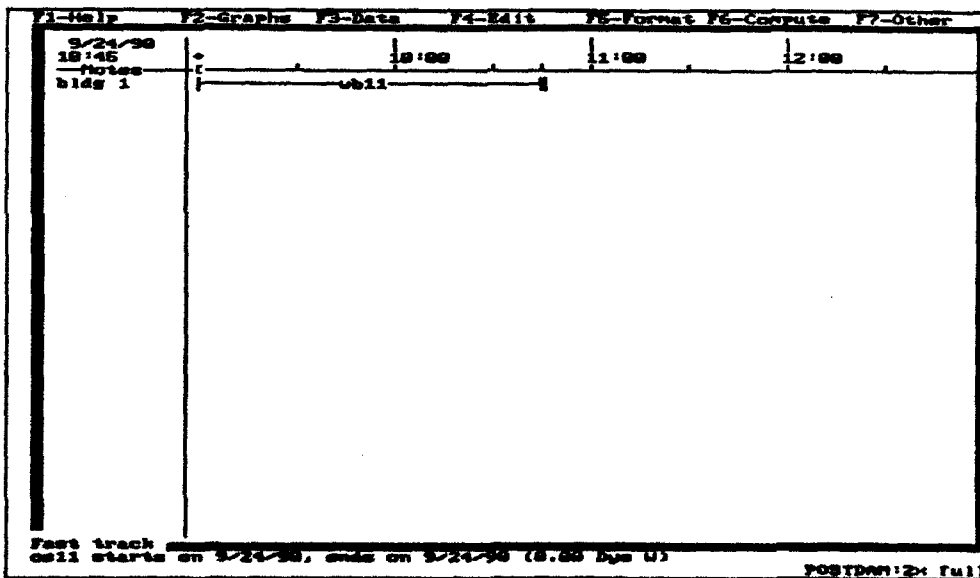


Figure 3.37. Fast Track Form with wbl1 Scheduled.

F1-Help F2-Graphs F3-Data F4-Edit F5-Format F6-Compute F7-Other						
Resource	Quantity	Work units	Low start	Planned work	Actual work	More Remaining work
repair team	1.000	Hrs	0.00	0.00	0.00	0.00
	1.000	Dys	0.00	0.00	0.00	0.00

cell allocations
fast track

POSITION: Full

Figure 3.38. Allocations List for cs11.

F1-Help F2-Graphs F3-Data F4-Edit F5-Format F6-Compute F7-Other			
9/24/90	10:00	11:00	12:00
11:15			
Notes	cs11		
bidg 1	cs11		

Fast track
cell starts on 9/24/90, ends on 9/24/90 (8.00 Dys 0)

POSITION: Full

Figure 3.39. Schedule of Repairs for Building 1.

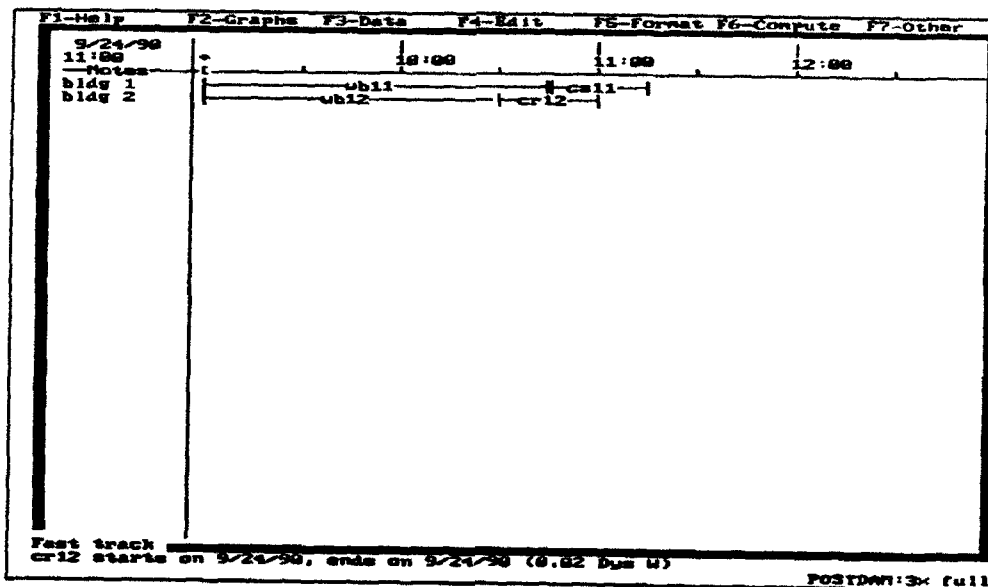


Figure 3.40. Schedule of Repairs for Buildings 1 and 2.

cr12 is a column replacement. Because there is no resource conflict, repairs to these two buildings can be done simultaneously, as shown on the Fast Track Form in Figure 3.40.

3.3.3.3 Resource Conflicts

The HPM system alerts the user if a resource conflict exists. As an example, the third facility, "Building 3" has been added to the Fast Track Form shown in Figure 3.41, where fr13 is a floor repair, and cs13 is a column splint repair. In Figure 3.41, HPM alerts the user of a resource conflict by writing the word Resource at the bottom of the Fast Track Form. The user can determine the exact nature of the resource conflict by viewing the allocations lists, as described in Section 3.3.3.1 of this SUM. Figures 3.42 and 3.43 show the allocations lists for fr13 and cs13, respectively, and the R on the left hand side of repair team indicates that the resource has been over allocated.

Resource conflicts are eliminated by delaying lower priority repairs. To reschedule a repair, the user places the cursor in the Fast Track Form on the repair to be rescheduled then selects the [F4] key to display the "Edit" Menu shown in Figure 3.22. From the Edit Menu, the user selects Option 3 "Move Task," which displays the "Moving Task" Window shown in Figure 3.44, with fr13 as the repair to be rescheduled. The user then reschedules the repair using the arrow keys, and confirms the action by pressing the [F10] key. Figure 3.45 shows the

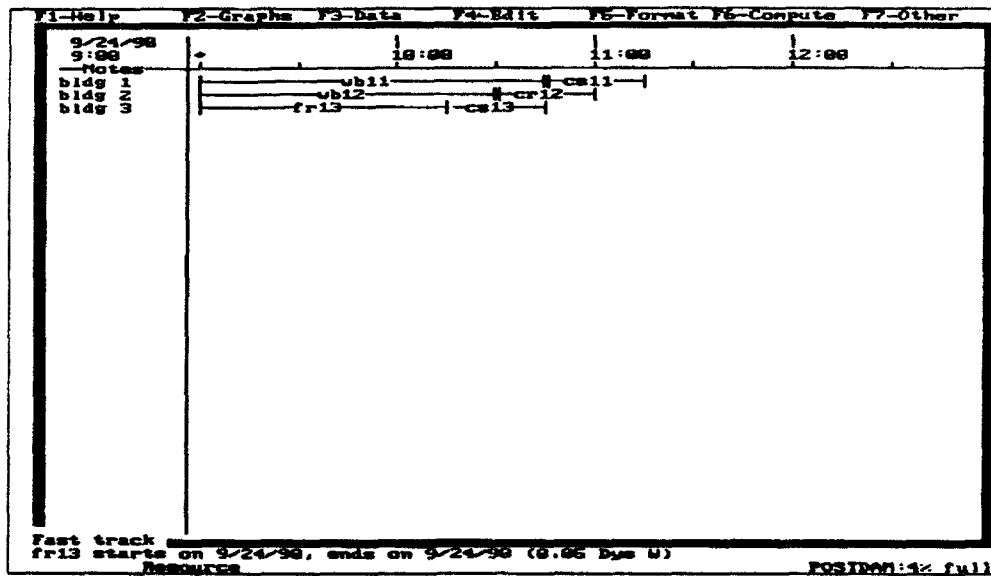


Figure 3.41. Schedule of Repairs with Resource Conflicts.

Resource	Quantity	Work units	Log start	Planned work	Actual work	More Remaining work
repair team	1.000	Hrs	0.00	1.25	0.00	0.00
ramset	1.000	Hrs	0.00	1.25	0.00	0.00
	1.000	Hrs	0.00	0.00	0.00	0.00

fr13 allocations
Fast track
Resource

POSITION: 7% full

Figure 3.42. Allocations for fr13.

F1-Help F2-Graphs F3-Data F4-Edit F5-Format F6-Compute F7-Other							
Resource	Quantity	Work units	Lag start	Planned work	Actual work	More	Remaining work
R repair team	1.000	Hrs	0.00	0.00	0.00		0.00
	1.000	Dyn	0.00	0.00	0.00		0.00

cs13 allocations
Fast track Resource POSTION:9: full

Figure 3.43. Allocations for cs13.

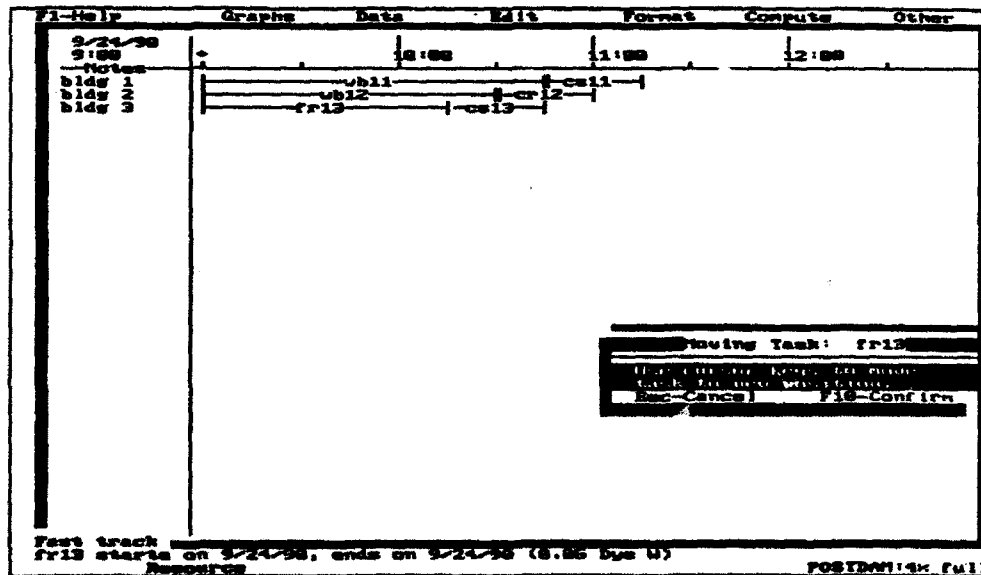


Figure 3.44. Moving Task Window.

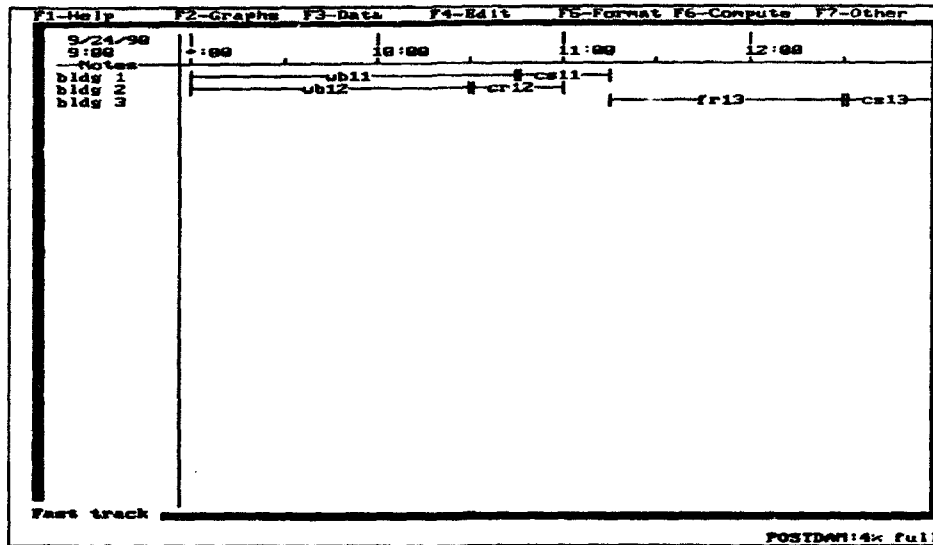


Figure 3.45. Schedule of Repairs for Building 1, 2, and 3.

rescheduled repairs for Building 3. A 15-minute relocation period is always shown at the end of a facility repair period, to allow the repair team(s) time to move to the next damaged facility.

3.3.3.4 Deleting a Repair

To delete a repair from the Fast Track Form, the user places the cursor in the Fast Track Form on the repair to be deleted, then selects the [F4] key to display the "Edit" Menu shown in Figure 3.22. From the Edit Menu, the user selects Option 4, "Remove Task," which displays the "Remove Task" window shown in Figure 3.46, with cs13 as the repair to be deleted. The user then presses the [F10] key, and the repair is deleted.

3.3.4 Output

HPM produces 26 different reports, which provide a wide variety of information about the status of a project. The reports can be sent either to a disk file for permanent storage, or directly to a printer. For POST-DAM, only the Allocations by Task text report, Resources by Time Text Report, and Fast Track Graphics Report are of interest.

To access the reports section of HPM, the user selects Option 7, "Reports," in the main menu. This is accomplished by either pressing the [7] key, or using

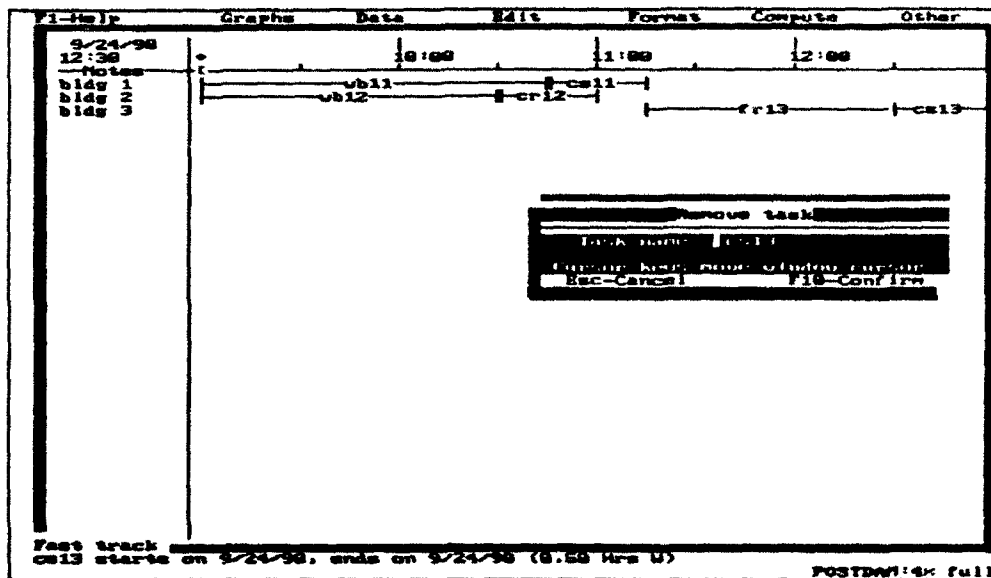


Figure 3.46. Remove Task Window.

the arrow keys to move the cursor to Option 7 and pressing [Enter]. The reports form then appears on the screen, as shown in Figure 3.47.

3.3.4.1 Allocations by Task Text Report

To output the Allocations by Task Text Report, the user places the cursor on "Allocations by Task" in the reports form, using the arrow keys, then presses the [F2] key, to display the Print Options Menu shown in Figure 3.48. The user then selects Option 1, "Run Report," and the Text Report Option Window appears on the screen, as shown in Figure 3.49. If a hard copy of the report is required, the user presses the [F10] key and the report is sent to the printer. If the report needs to be stored in a file, the user types in a filename (e.g., pdat1) at the "Filename" prompt, and changes the "Print To" option to "Disk File," as shown in Figure 3.50. An example of the Allocations by Task Output is shown in Figure 3.51.

3.3.4.2 Resources by Time

To output the Resources by Time Text Report, the user places the cursor on "Resources by Time" in the reports form using the arrow keys, then presses the [F2] key to display the Print Options Menu shown in Figure 3.48. The user then selects Option 1, "Run Report," and the Text Report Option Window appears on the

F1-Help	F2-Print Options	F3-Lists	F4-Templates
Text reports		Graphic reports	
Task & Milestone Form		Fast Track Chart	
Task Work Summary		Gantt Chart	
Task & Milestone List		PERT Chart	
Project List		PERT Half Zoom	
Resource List		PERT Full Zoom	
Allocations by Resource		PERT Time Relative	
Allocations by Task		Work Breakdown Graph	
Resources by Time		Cost Graph, cumulative	
Project Cost by Time		Cost Graph, per time unit	
Earned Value Report		Cost Graph, earned value	
Work Breakdown Report		Resource Allocations	
Work Breakdown Summary		Resource Loading	
Work Breakdown CSM			
Calendar Mallochart			
Reports			
POSTDOW:18: Full			

Figure 3.47. Reports Form.

F1-Help	F2-Print Options	F3-Lists	F4-Templates
<ul style="list-style-type: none"> 1. Run report 2. Run using template 3. Run by reports 4. Run by task 		Graphic reports	
Task & Milestone List		Fast Track Chart	
Project List		Gantt Chart	
Resource List		PERT Chart	
Allocations by Resource		PERT Half Zoom	
Allocations by Task		PERT Full Zoom	
Resources by Time		PERT Time Relative	
Project Cost by Time		Work Breakdown Graph	
Earned Value Report		Cost Graph, cumulative	
Work Breakdown Report		Cost Graph, per time unit	
Work Breakdown Summary		Cost Graph, earned value	
Work Breakdown CSM		Resource Allocations	
Calendar Mallochart		Resource Loading	
Reports			
POSTDOW:18: Full			

Figure 3.48. Print Options Menu.

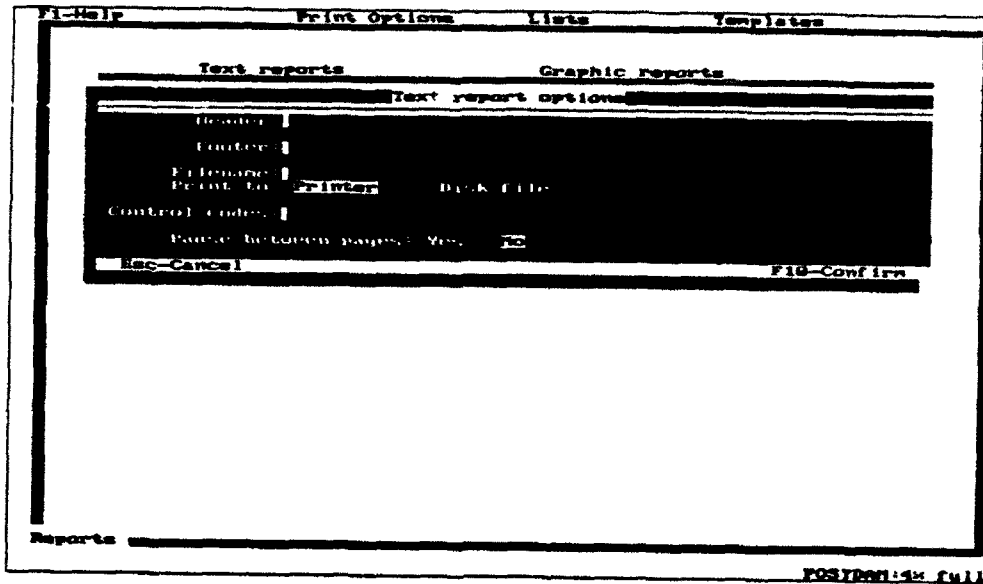


Figure 3.49. Text Report Option Window.

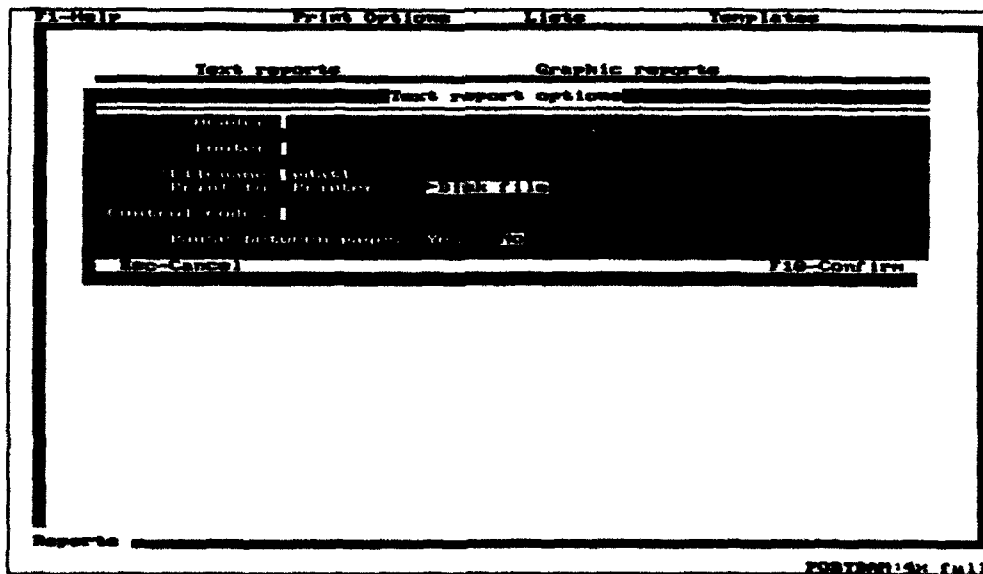


Figure 3.50. Disk File pdat1.

<u>Task name</u>	<u>Resource name</u>	<u>Resource quantity</u>	<u>Planned work</u>
cr12	ranset	1.000	0.50 Hrs W
cr12	shoring jack	1.000	0.50 Hrs W
cr12	repair team	1.000	0.50 Hrs W
cs11	repair team	1.000	0.50 Hrs W
cs13	repair team	1.000	0.50 Hrs W
fr13	repair team	1.000	1.25 Hrs W
fr13	ranset	1.000	1.25 Hrs W
wb11	repair team	1.000	1.75 Hrs W
wb11	sc machine	1.000	1.75 Hrs W
wb11	ranset	1.000	1.75 Hrs W
wb12	repair team	1.000	1.50 Hrs W
wb12	ranset	2.000	3.00 Hrs W
wb12	sc machine	1.000	1.50 Hrs W

Figure 3.51. Allocations by Task Output.

screen, as shown in Figure 3.49. If a hard copy of the report is required, the user presses the [F10] key and the report is sent to the printer. If the report needs to be stored in a file, the user types in a filename (e.g., pdrt1) at the "Filename" prompt, and changes the "Print to" option to "Disk File," as shown in Figure 3.52. An example of the Resources by Time output is shown in Figure 3.53 for 9:00 and 9:15.

3.3.4.3 Fast Track Chart Graphics Report

To output the Fast Track Chart Graphics Report, the user places the cursor on "Fast Track Chart" in the reports form using the arrow keys, then presses the [F2] key to display the Print Options Menu shown in Figure 3.48. The user then selects Option 1, "Run Report," and the Graphics Report Options Window appears on the screen, as shown in Figure 3.54. If a hard copy of the report is required, the user presses the [F10] key and the report is sent to the printer. If the report needs to be stored in a file, the user types in a filename (e.g., pdft1) at the "Filename" prompt, and changes the "Print to" option to "Print file," as shown in Figure 3.55. An example of the Fast Track Chart output is shown in Figure 3.56.

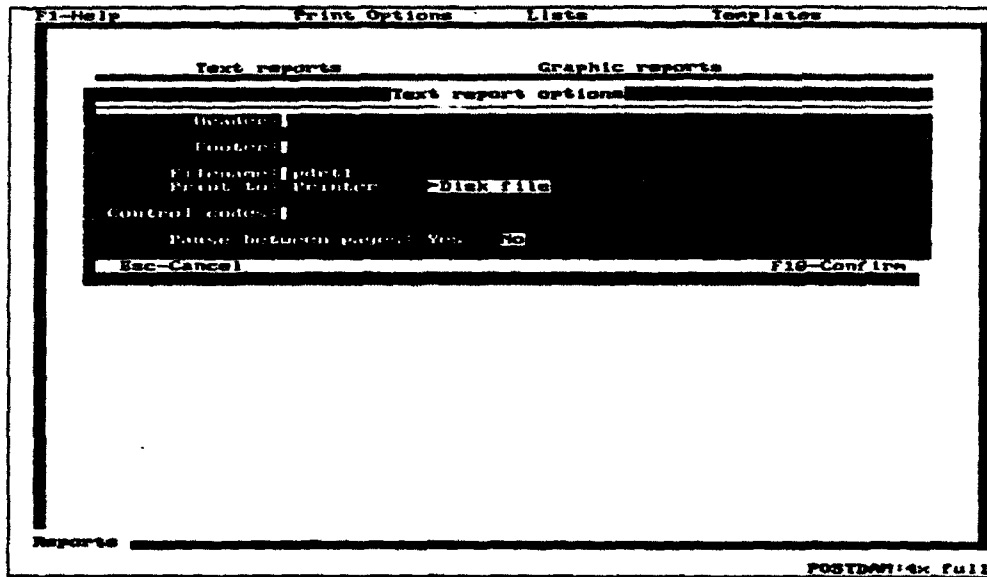


Figure 3.52. Disk File pdrt1.

Page 1-1

Resources by Time	31-Oct-1990	
	24-Sep-1990 9:00	24-Sep-1990 9:15
bulldozer Resource loading	0.00	0.00
ranset Resource loading	3.00	3.00
repair team Resource loading	2.00	2.00
sc machine Resource loading	2.00	2.00
shoring jack Resource loading	0.00	0.00

Figure 3.53. Resources by Time Output.

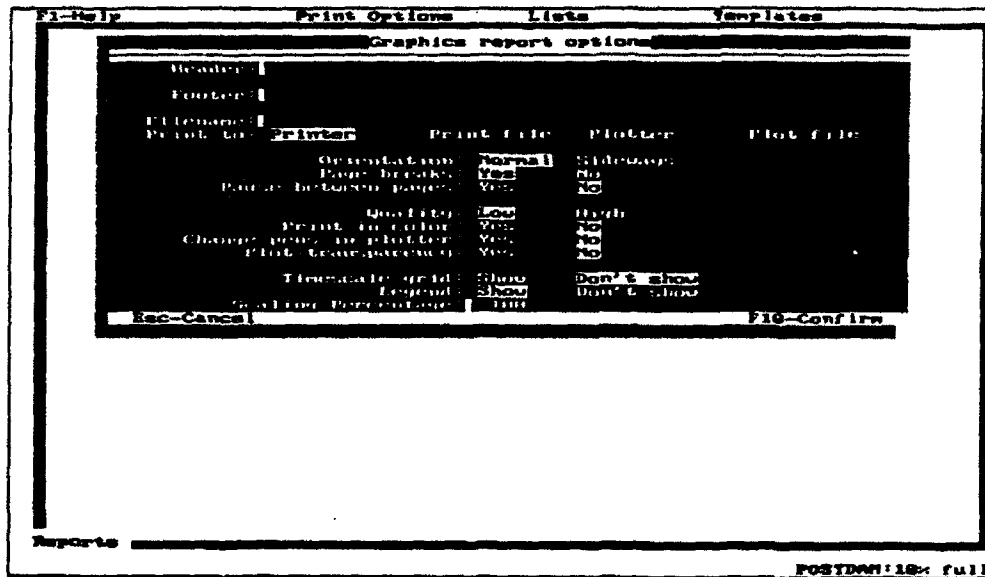


Figure 3.54. Graphics Report Options Window.

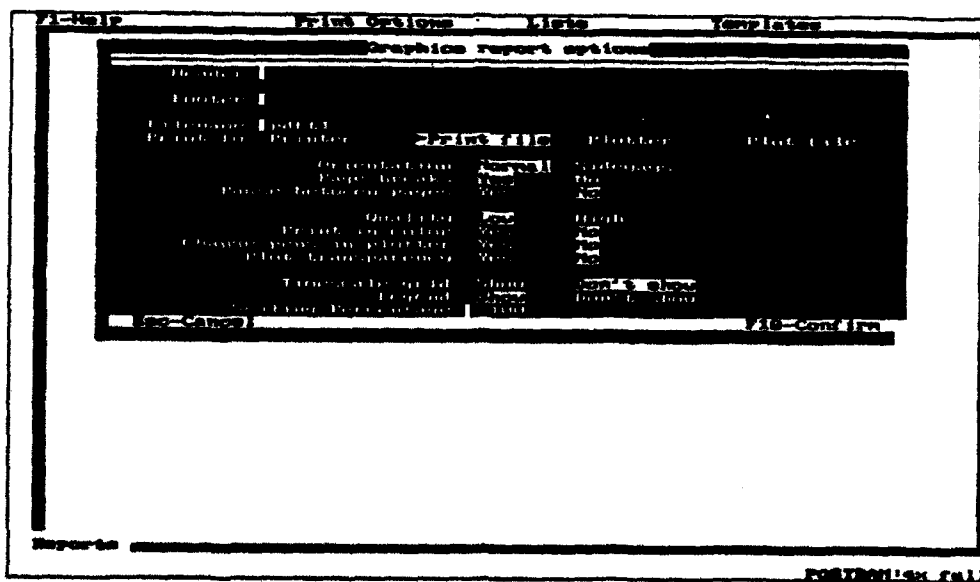


Figure 3.55. Print File pdft1.

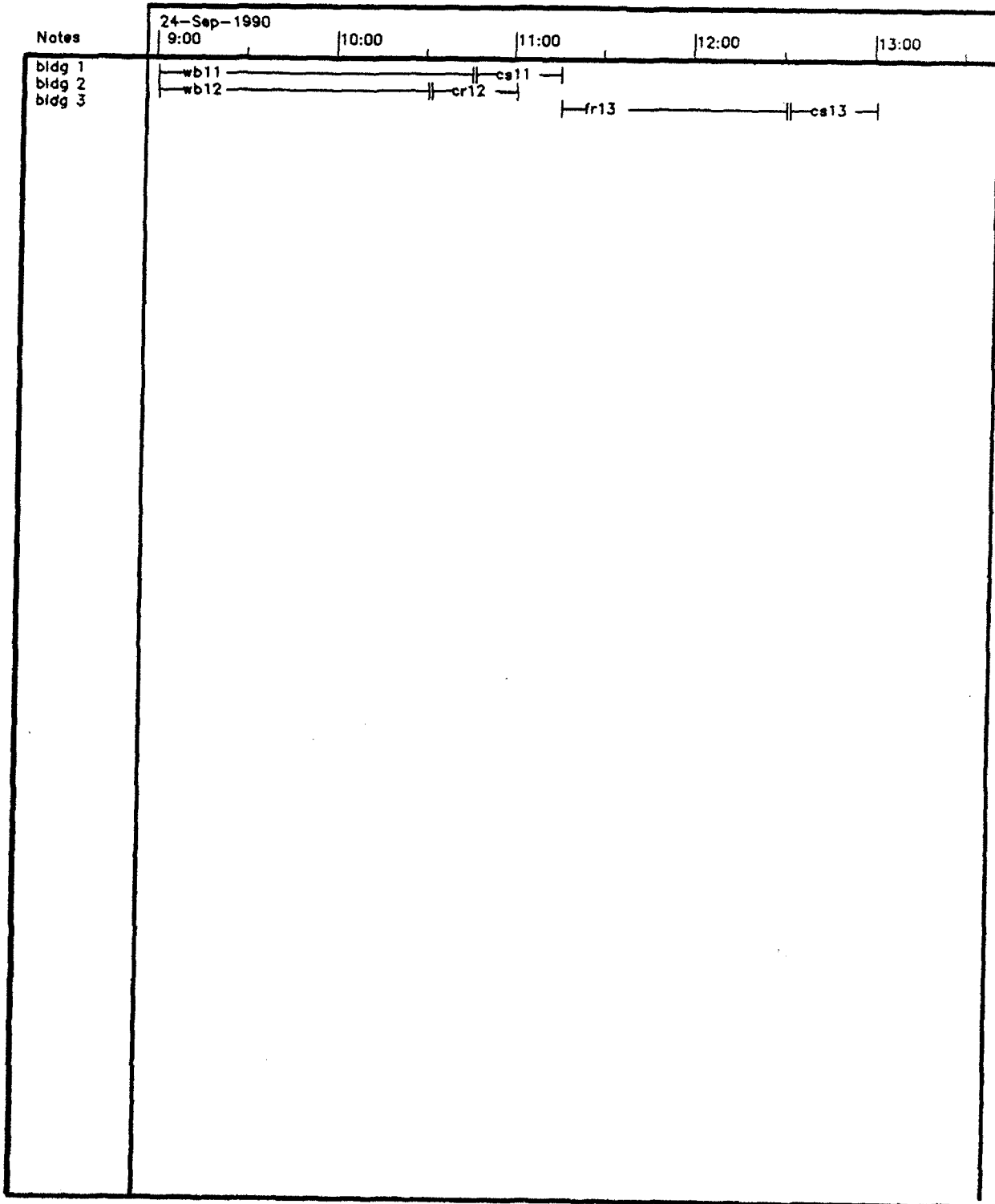


Figure 3.56. Fast Track Chart Output.