



COMPREHENSIVE MONITORING PROGRAM

Contract Number DAAA15-87-0095

DRAFT FINAL TECHNICAL PLAN

Version 3.3

SEPTEMBER 1990

GROUND WATER

Original contains color plates; All DTIC reproductions will be in black and white

Prepared by:

**R. L. STOLLAR & ASSOCIATES INC.
HARDING LAWSON ASSOCIATES
EBASCO SERVICES INCORPORATED
DATACHEM LABORATORIES
ENVIRONMENTAL SCIENCE AND ENGINEERING, INC.
MIDWEST RESEARCH INSTITUTE**

Prepared for:

**U.S. ARMY PROGRAM MANAGER'S OFFICE FOR
ROCKY MOUNTAIN ARSENAL**

THE VIEWS, OPINIONS, AND/OR FINDINGS CONTAINED IN THIS REPORT ARE THOSE OF THE AUTHOR(S) AND SHOULD NOT BE CONSTRUED AS AN OFFICIAL DEPARTMENT OF THE ARMY POSITION, POLICY, OR DECISION, UNLESS SO DESIGNATED BY OTHER DOCUMENTATION.

THE USE OF TRADE NAMES IN THIS REPORT DOES NOT CONSTITUTE AN OFFICIAL ENDORSEMENT OR APPROVAL OF THE USE OF SUCH COMMERCIAL PRODUCTS. THE REPORT MAY NOT BE CITED FOR PURPOSES OF ADVERTISEMENT.

DTIC QUALITY INSPECTED 3

19950620 018

**Rocky Mountain Arsenal
Information Center
Commerce City, Colorado**

REPORT DOCUMENTATION PAGE

Form Approved
OMB No. 0704-0188

Public reporting burden for this collection of information is estimated to average 1 hour per response, including the time for reviewing instructions, searching existing data sources, gathering and maintaining the data needed, and completing and reviewing the collection of information. Send comments regarding this burden estimate or any other aspect of this collection of information, including suggestions for reducing this burden, to Washington Headquarters Services, Directorate for Information Operations and Reports, 1215 Jefferson Davis Highway, Suite 1204, Arlington, VA 22202-4302, and to the Office of Management and Budget, Paperwork Reduction Project (0704-0188), Washington, DC 20503.

1. AGENCY USE ONLY (Leave blank)		2. REPORT DATE 09/00/90	3. REPORT TYPE AND DATES COVERED	
4. TITLE AND SUBTITLE COMPREHENSIVE MONITORING PROGRAM, GROUNDWATER, DRAFT FINAL TECHNICAL PLAN, VERSION 3.3 (ADDENDUM)			5. FUNDING NUMBERS	
6. AUTHOR(S)			DAAA15 87 0095	
7. PERFORMING ORGANIZATION NAME(S) AND ADDRESS(ES) ROBERT L. STOLLAR AND ASSOCIATES DENVER, CO			8. PERFORMING ORGANIZATION REPORT NUMBER 92203R01	
9. SPONSORING / MONITORING AGENCY NAME(S) AND ADDRESS(ES) HARDING LAWSON ASSOCIATES DENVER, CO			10. SPONSORING / MONITORING AGENCY REPORT NUMBER	
11. SUPPLEMENTARY NOTES				
12a. DISTRIBUTION / AVAILABILITY STATEMENT APPROVED FOR PUBLIC RELEASE; DISTRIBUTION IS UNLIMITED			12b. DISTRIBUTION CODE	
13. ABSTRACT (Maximum 200 words) THIS ADDENDUM DETAILS MODIFICATIONS PROPOSED FOR THE CMP GROUNDWATER MONITORING PROGRAM. THESE MODIFICATIONS ARE BASED ON PREVIOUS CMP MONITORING EXPERIENCE AND ARE DIRECTED TOWARD OPTIMIZING NETWORK EFFICIENCIES AND MAXIMIZING DATA UTILITY.				
14. SUBJECT TERMS CONTAMINANTS DISTRIBUTION, WATER LEVEL			15. NUMBER OF PAGES	
			16. PRICE CODE	
17. SECURITY CLASSIFICATION OF REPORT UNCLASSIFIED	18. SECURITY CLASSIFICATION OF THIS PAGE	19. SECURITY CLASSIFICATION OF ABSTRACT	20. LIMITATION OF ABSTRACT	

COMPREHENSIVE MONITORING PROGRAM
GROUND-WATER ELEMENT
FY90/91 DRAFT FINAL TECHNICAL PLAN ADDENDUM

This addendum details modifications proposed for the CMP ground-water monitoring program. These modifications are based on previous CMP monitoring experience and are directed toward optimizing network efficiencies and maximizing data utility. Data gathered during the first two years of the CMP provide comprehensive data sets for RI/FS verification and system operational purposes. These data, in addition to data from the RI/FS, indicate that the hydrologic system at RMA is relatively static with respect to contaminant migration when examined over a one to two year time frame. Therefore, the proposed modifications include revisions of the sampling frequency for the annual and semiannual monitoring programs. It is proposed that the annual monitoring program be replaced with a biennial monitoring event and the semiannual monitoring program be replaced with an annual "benchmark wells" monitoring event. Quarterly water-quality sampling will continue to be conducted in support of IRAs. Figure 1 shows the current and proposed monitoring schedules. It is proposed that the biennial monitoring event will occur in the first quarter of even-numbered fiscal years and the benchmark monitoring event will occur in the first quarter of odd-numbered fiscal years. The proposed adjustments are consistent with the purpose and specific objectives of the CMP ground-water element as outlined in the Final Technical Plan (June 1989).

Water-Level Monitoring Program

This addendum proposes no major modifications to the current water-level monitoring well network. This network has consistently grown since the CMP program began in 1988. This growth is attributable, in large part, to the addition of newly-installed wells. The FY89 water-level monitoring network (1013 wells) is shown in Table 1.

Water-Quality Monitoring Program

The Biennial Sampling Round:

1988 and 1989 CMP analytical results indicate that regional contaminant distribution patterns have not significantly changed in areas unaffected by current IRA and boundary system cleanup efforts. Therefore, a biennial regional monitoring network is proposed to replace the current annual monitoring network. This sampling round is essentially the same monitoring network as the former annual event, but the proposed sampling frequency has been changed to every other year. It remains the largest network for CMP water-quality sampling. Figures 2 and 3 show locations for proposed

↓
□
□
□

Codes	
Dist	Avail and/or Special
A-1	

biennial unconfined and confined flow system monitoring well networks, respectively, and Table 2 lists these wells.

The Fall 1989 annual event consisted of approximately 620 wells. Approximately 630 wells are proposed for the new biennial event (Table 2). Wells to be sampled in the event include wells in the Benchmark and Basin F IRA quarterly sampling networks. The size of the biennial monitoring network will provide for continued detail in interpreting contaminant plume configurations.

The Annual Benchmark Well Sampling Round:

The proposed benchmark well sampling round is a modification of the former semiannual sampling round. It is proposed that instead of sampling twice annually, however, benchmark wells be sampled once annually. Benchmark wells, which are a subset of the biennial network, will provide annual data for the purpose of assessing long-term contaminant concentration trends in response to contamination cleanup. To a lesser extent, the benchmark well monitoring program will provide support to Interim Response Action (IRA) areas and areas of current interest or priority. Figures 4 and 5 show locations for the proposed unconfined and confined flow system monitoring wells comprising the benchmark well network. Table 3 lists these wells.

Minor alterations to the benchmark monitoring network may be made in the future as the monitoring needs of the different IRAs change. The majority of the wells comprising the benchmark monitoring network, however, will not be changed as constancy and sampling continuity are critical factors for assessing long-term trends. The well selection criteria for the benchmark monitoring network remains largely unchanged from those listed in the Final Technical Plan (June 1989).

The Quarterly Sampling Round:

The quarterly monitoring event has been expanded to include an additional thirteen wells installed to monitor new IRA facilities. Figure 6 presents the locations of new wells along with wells currently in the quarterly monitoring network for the Basin F IRA. The new wells are numbered 26160 through 26171, and 26173. In addition, five wells have been added to the quarterly sampling round to support the Basin A Neck IRA and the Ground-water System North of Basin F IRA. These wells, 26501, 26503, 35505, 35506, and AMW-201 are shown on Figure 2. The total number of wells in the quarterly monitoring network is now 69 (Table 4).

Laboratory Analysis Program

Since its inception, the CMP list of analytical parameters has been largely the same for the annual, semiannual, and quarterly monitoring events. At this time, no changes to the analytical parameters list are proposed for the biennial, benchmark, and quarterly monitoring events.

In the future, changes to the list of parameters may be made based on annual assessments of analytical results. Changes may include the addition or deletion of analytes or groups of analytes on an area-by-area basis.

Table 1 CMP Water-level Monitoring Network, FY89

Section Number	Total Wells	Wells
Unconfined Flow System Wells		
01	41	001, 004, 007, 008, 010, 011, 012, 014, 016, 018, 019, 021, 024, 030, 033, 041, 044, 047, 049, 055, 061, 068, 069, 070, 073, 074, 075, 078, 501, 510, 514, 518, 522, 525, 528, 534, 537, 554, 568, 586, 588
02	28	001, 002, 003, 005, 006, 007, 008, 011, 014, 020, 023, 026, 034, 037, 040, 049, 050, 052, 055, 056, 058, 059, 520, 545, 578, 580, 583, 585
03	5	001, 002, 005, 011, 517
04	39	007, 008, 010, 013, 014, 015, 016, 017, 019, 020, 021, 022, 023, 024, 025, 026, 027, 028, 029, 035, 036, 037, 038, 039, 040, 041, 042, 043, 044, 045, 046, 047, 048, 049, 050, 051, 076, 077, 525
06	2	002, 003
07	2	001, 003
08	2	002, 003
09	10	002, 005, 006, 007, 008, 010, 011, 013, 014, 015
11	4	002, 005, 006, 007
12	6	001, 002, 005, 007, 008, 009
19	3	001, 003, 004
22	17	004, 006, 008, 015, 016, 018, 019, 020, 021, 022, 033, 036, 040, 043, 049, 053, 060
23	83	002, 004, 007, 010, 011, 013, 016, 021, 025, 026, 028, 029, 030, 036, 039, 040, 045, 046, 047, 049, 050, 053, 057, 058, 059, 072, 079, 084, 085, 092, 094, 095, 096, 102, 106, 108, 110, 118, 119, 120, 121, 122, 123, 125, 134, 135, 140, 142, 146, 150, 151, 157, 159, 160, 166, 178, 179, 182, 185, 188, 191, 196, 197, 198, 199, 202, 203, 204, 205, 206, 207, 208, 211, 220, 223, 226, 231, 232, 235, 237, 238, 239, 241
24	87	001, 003, 004, 007, 010, 013, 014, 015, 016, 017, 018, 019, 020, 021, 023, 024, 025, 027, 041, 046, 049, 051, 052, 055, 056, 057, 058, 062, 063, 064, 081, 085, 086, 092, 093, 094, 095, 096, 097, 098, 101, 102, 103, 104, 105, 106, 107, 108, 111, 112, 113, 114, 117, 121, 122, 123, 124, 127, 128, 130, 135, 149, 150, 151, 152, 158, 161, 162, 163, 164, 165, 166, 173, 178, 179, 180, 181, 183, 184, 185, 187, 188, 191, 196, 199, 200, 201

Table 1 CMP Water-Level Monitoring Network, FY89 (continued)

Section Number	Total Wells	Wells
25	19	001, 003, 011, 015, 018, 022, 028, 035, 038, 041, 042, 043, 044, 046, 047, 048, 052, 054, 055
26	49	006, 010, 015, 016, 017, 019, 020, 040, 041, 046, 048, 049, 050, 062, 063, 065, 068, 071, 073, 076, 081, 083, 085, 088, 091, 093, 124, 127, 133, 143, 145, 148, 154, 157, 158, 159, 160, 161, 162, 163, 164, 165, 166, 167, 168, 169, 170, 171, 173
27	43	002, 003, 004, 005, 006, 007, 009, 010, 011, 015, 016, 018, 025, 031, 037, 040, 041, 042, 043, 044, 045, 049, 051, 053, 057, 062, 063, 064, 066, 068, 070, 071, 072, 074, 075, 077, 080, 081, 082, 083, 084, 085, 086
28	14	003, 006, 008, 012, 014, 018, 020, 021, 022, 023, 024, 027, 503, 513
30	3	001, 002, 009
31	5	002, 003, 005, 009, 016
32	2	001, 004
33	53	001, 002, 014, 018, 019, 020, 021, 022, 023, 024, 025, 030, 033, 048, 049, 050, 053, 054, 060, 061, 062, 063, 064, 065, 066, 067, 068, 069, 070, 071, 072, 073, 074, 075, 076, 077, 078, 079, 500, 501, 502, 505, 507, 509, 510, 512, 576, 577, 579, 580, 581, 582, 583
34	5	002, 005, 008, 009, 515
35	22	007, 013, 014, 023, 025, 030, 040, 047, 048, 052, 053, 058, 061, 065, 069, 077, 079, 087, 088, 090, 091, 092
36	43	013, 017, 056, 060, 062, 063, 065, 067, 068, 069, 073, 075, 076, 077, 081, 082, 084, 085, 086, 087, 089, 090, 093, 109, 112, 137, 139, 141, 142, 145, 146, 163, 164, 165, 166, 167, 168, 169, 177, 180, 181, 184, 185
Off-Post	68	37304, 37306, 37307, 37308, 37309, 37310, 37312, 37313, 37320, 37323, 37327, 37330, 37331, 37332, 37333, 37334, 37335, 37336, 37337, 37338, 37339, 37340, 37341, 37342, 37343, 37344, 37345, 37346, 37347, 37348, 37349, 37350, 37351, 37352, 37353, 37354, 37355, 37356, 37358, 37359, 37360, 37361, 37362, 37363, 37364, 37366, 37367, 37368, 37369, 37370, 37371, 37373, 37374, 37377, 37378, 37381, 37382, 37383, 37385, 37386, 37389, 37391, 37392, 37395, 37396, 37397, 37398, 37399
Total Unconfined Flow System Wells = 655		

Table 1 CMP Water-Level Monitoring Network, FY89 (continued)

Section Number	Total Wells	Wells
<u>Confined Flow System Wells</u>		
01	29	015, 022, 023, 025, 028, 029, 031, 032, 034, 035, 036, 037, 039, 040, 042, 043, 045, 046, 048, 050, 067, 071, 072, 076, 077, 079, 080, 081, 082
02	33	004, 009, 010, 012, 013, 015, 016, 018, 019, 021, 022, 024, 025, 027, 028, 030, 031, 032, 033, 035, 036, 038, 039, 041, 042, 043, 044, 045, 046, 047, 048, 057, 060
03	5	003, 004, 006, 007, 012
04	3	009, 011, 012
05	3	001, 002, 003
06	2	004, 005
07	2	004, 005
08	1	004
09	2	003, 004
11	2	003, 004
12	2	003, 004
19	10	002, 005, 006, 007, 011, 015, 016, 017, 018, 019
22	8	023, 024, 027, 028, 030, 031, 079, 080
23	31	055, 144, 161, 176, 177, 180, 181, 183, 184, 186, 187, 189, 190, 192, 193, 200, 201, 209, 218, 219, 221, 222, 224, 225, 227, 228, 229, 230, 233, 234, 236
24	19	080, 082, 083, 087, 089, 109, 125, 126, 136, 137, 159, 167, 168, 171, 172, 174, 175, 197, 198
25	26	004, 007, 008, 009, 010, 012, 013, 014, 016, 017, 019, 020, 021, 023, 024, 026, 029, 031, 033, 034, 037, 039, 040, 049, 050, 051

Table 1 CMP Water-Level Monitoring Network, FY89 (continued)

Section Number	Total Wells	Wells
26	54	023, 024, 025, 026, 027, 028, 029, 047, 051, 055, 056, 057, 058, 060, 061, 064, 066, 067, 069, 072, 074, 075, 077, 079, 080, 082, 084, 086, 089, 090, 092, 094, 096, 097, 123, 128, 129, 130, 134, 135, 136, 140, 141, 142, 144, 146, 147, 149, 150, 151, 152, 153, 155, 156
27	3	054, 055, 058
28	4	025, 026, 028, 029
29	2	002, 003
30	7	004, 005, 006, 007, 008, 010, 011
31	5	006, 007, 008, 010, 011
32	2	002, 003
33	9	015, 026, 027, 028, 029, 031, 032, 034, 035
34	8	003, 004, 006, 007, 010, 011, 012, 013
35	37	005, 008, 009, 012, 015, 016, 017, 027, 028, 032, 033, 036, 038, 039, 041, 050, 051, 054, 055, 056, 059, 062, 063, 066, 067, 068, 070, 071, 073, 074, 078, 080, 081, 082, 083, 084, 089
36	35	010, 024, 029, 036, 043, 057, 061, 066, 072, 078, 079, 083, 092, 099, 104, 105, 110, 113, 114, 117, 118, 119, 121, 122, 138, 140, 147, 158, 170, 171, 178, 179, 182, 183, 186
Off-Post	14	37316, 37317, 37318, 37319, 37321, 37322, 37365, 37372, 37376, 37379, 37380, 37387, 37388, 37390

Total Confined Flow System Wells = 358

Table 2 Proposed CMP Biennial Water Quality Monitoring Network

Section No.	Total Wells	Well Numbers
<u>Unconfined Flow System Wells</u>		
01	24	007, 008, 014, 017, 019, 020, 024, 027*, 036, 041, 047, 055, 061, 068, 073, 074, 075*, 078, 510, 511, 516, 517, 524, 525
02	17	003, 005, 007, 008, 014, 020*, 023*, 034*, 037, 040, 055, 056, 059, 505*, 509, 513, 545
03	6	002, 005, 010, 011, 517, 523
04	30	007, 008, 010, 014, 016, 019, 020, 021, 024, 026, 029, 030, 033, 036, 037, 038, 039, 041, 042, 043, 044, 045, 046, 047, 048, 049, 050, 076, 077, 524
06	2	002, 003
07	1	001
08	1	003
09	12	002, 005, 006, 007, 008, 009, 010, 011, 012, 013, 014, 015
11	4	002, 005, 007, 018
12	1	002
19	2	001, 003
22	11	006, 008*, 011*, 015, 016, 018, 019, 021, 043*, 051*, 053*
23	38	047*, 049 ⁺ , 050, 052, 053, 057*, 058, 085*, 095 ⁺ , 096, 106, 108 ⁺ , 118*, 123*, 142 ⁺ , 150, 151, 179 ⁺ , 182, 185, 188 ⁺ , 191 ⁺ , 197*, 198*, 202*, 203*, 204*, 205*, 220 ⁺ , 223, 226*, 231*, 232*, 235*, 237 ⁺ , 238 ⁺ , 239 ⁺ , 241 ⁺ , AMW-201 ⁺
24	29	013, 027, 049, 063*, 081, 086, 092, 094, 101*, 106, 107, 111, 124, 127*, 135*, 161*, 163*, 164*, 166*, 181, 183, 184*, 185*, 188, 191*, 196, 199*, 200*, 201*
25	14	011, 018, 022, 038, 041, 042, 043, 044, 046, 047, 048, 052, 054, 055

Table 2 Proposed CMP Biennial Water Quality Monitoring Network (continued)

Section No.	Total Wells	Well Numbers
26	40	005, 006, 011*, 015+, 017+, 019+, 020+, 041+, 063, 065+, 068, 071+, 073+, 076*, 083+, 085+, 088, 127+, 133+, 145+, 148+, 154, 157+, 158*, 159, 160+, 161+, 162+, 163+, 164+, 165+, 166+, 167+, 168+, 169+, 170+, 171+, 173+, 501*, 503*
27	31	003*, 005, 007, 016+, 025, 028, 031, 037*, 040, 042, 043, 044*, 049, 051, 053*, 056*, 057*, 059*, 062*, 064*, 071*, 072*, 073*, 074*, 076*, 079*, 082*, 083*, 084, 085*, 086*
28	5	002*, 018, 022, 023*, 027
30	5	009, 018, 019, 020, 021
31	5	005, 012, 014, 015, 016
32	1	004
33	20	001, 002, 025, 030, 033, 048*, 063, 064, 066, 068, 074, 075, 076, 077*, 078*, 079*, 509, 514, 578, 581*
34	5	002, 005, 008, 009, 508
35	21	013, 018, 020, 023, 034, 037, 052, 058, 061, 065, 077, 079, 087, 088, 090, 091, 092, 504, 505*, 506*, 507*
36	26	001, 056, 065, 069, 074, 075, 076, 080, 084, 090, 094, 108, 109, 112, 123, 139, 142, 146, 168, 169, 177, 180, 181, 184, 185, 592
Offpost	86	37304*, 37307*, 37308*, 37309*, 37312*, 37313*, 37320, 37323*, 37327*, 37330*, 37331*, 37333*, 37334*, 37335*, 37336, 37337*, 37338*, 37339*, 37341, 37342, 37343*, 37344, 37345*, 37346, 37347, 37348, 37349, 37350, 37351, 37352, 37353, 37354, 37355, 37356, 37357, 37358*, 37359, 37360, 37361, 37362*, 37363, 37364, 37366, 37367, 37368, 37369*, 37370*, 37371*, 37373*, 37374*, 37377*, 37378*, 37381*, 37382*, 37383, 37385*, 37386*, 37389*, 37391*, 37392*, 37395, 37396*, 37397, 37403, 37404, 37407*, 37428, 37429, 37430, 37433, 37434, 37438*, 37439*, 37441*, 37442, 37443, Other Wells - 005*, 198-608, 198-611, 198-614, DCGW01, DCGW03, SACMW03, SACMW08, SACMW11, SAC18

Total Unconfined Wells = 438

Table 2 Proposed CMP Biennial Water Quality Monitoring Network (continued)

Section No.	Total Wells	Well Numbers
<u>Confined Flow System Wells</u>		
01	18	015, 022, 025, 028*, 029*, 031, 032, 037, 048, 067, 071, 072, 076*, 077, 079, 080, 081, 082
02	16	018, 019, 021*, 025*, 030, 031, 035, 036, 039, 041, 043, 044, 047, 048, 057, 060
03	4	003, 004, 006, 012
04	3	009, 011, 012
05	1	001
06	2	004, 005
07	2	004, 005
08	1	005
09	1	003
11	1	004
12	2	003, 004
19	3	015, 016, 017
22	7	023*, 027*, 028*, 030*, 031*, 079*, 080
23	24	177*, 180+, 181+, 183*, 184, 186, 187, 189+, 190+, 192+, 193+, 200*, 201*, 218*, 219*, 221+, 222+, 224, 225, 227*, 230*, 233*, 234*, 236*
24	9	089, 136*, 168*, 171*, 172*, 174*, 175*, 197, 198
25	11	004, 009, 013, 014, 016, 017, 019, 039, 049, 050, 051
26	24	055, 058, 061, 066+, 067+, 069, 072+, 075+, 084+, 086+, 089, 090, 096, 129+, 140+, 142+, 146+, 149+, 150+, 151, 152, 153+, 155+, 156+
27	4	054*, 055*, 058*, 060
28	2	025*, 028

Table 2 Proposed CMP Biennial Water Quality Monitoring Network (continued)

Section No.	Total Wells	Well Numbers
30	1	011
32	1	002
33	4	026, 031, 032, 034
34	5	003, 006, 011, 012, 013
35	22	008, 016, 017, 021, 036, 038, 039, 054, 062, 063, 066, 067, 068, 070, 071, 078, 080, 081, 082, 083, 084, 089
36	20	066, 083, 110, 114, 117, 119, 122, 148, 149, 154, 158, 159, 160, 170, 171, 178, 179, 182, 183, 186
Offpost	14	37316*, 37317*, 37318*, 37319*, 37321, 37322, 37365*, 37372*, 37376*, 37379*, 37380*, 37387*, 37388*, 37390*

Total Denver Fm Wells = 202

+ IRA Monitoring Network Wells

* Benchmark Network Wells

Table 3 Proposed CMP Benchmark Water Quality Monitoring Network

Section No.	Total Wells	Well Numbers
Unconfined Flow System Wells		
01	2	027, 075
02	4	020, 023, 034, 505
22	5	008, 011, 043, 051, 053
23	27	047, 049 ⁺ , 057, 085, 095 ⁺ , 108 ⁺ , 118, 123, 142 ⁺ , 179 ⁺ , 188 ⁺ , 191 ⁺ , 197, 198, 202, 203, 204, 205, 220 ⁺ , 226, 231, 232, 235, 237 ⁺ , 238 ⁺ , 239 ⁺ , 241 ⁺ , AMW-201 ⁺
24	14	063, 101, 127, 135, 161, 163, 164, 166, 184, 185, 191, 199, 200, 201
26	33	011, 015 ⁺ , 017 ⁺ , 019 ⁺ , 020 ⁺ , 041 ⁺ , 065 ⁺ , 071 ⁺ , 073 ⁺ , 076, 083 ⁺ , 085 ⁺ , 127 ⁺ , 133 ⁺ , 145 ⁺ , 148 ⁺ , 157 ⁺ , 158, 160 ⁺ , 161 ⁺ , 162 ⁺ , 163, 164 ⁺ , 165 ⁺ , 166 ⁺ , 167 ⁺ , 168 ⁺ , 169 ⁺ , 170 ⁺ , 171 ⁺ , 173 ⁺ , 501 ⁺ , 503 ⁺
27	20	003, 016 ⁺ , 037, 044, 053, 056, 057, 059, 062, 064, 071, 072, 073, 074, 076, 079, 082, 083, 085, 086
28	2	002, 023
33	5	048, 077, 078, 079, 581
35	3	505 ⁺ , 506 ⁺ , 507
Offpost	40	37304, 37307, 37308, 37309, 37312, 37313, 37323, 37327, 37330, 37331, 37333, 37334, 37335, 37337, 37338, 37339, 37343, 37345, 37358, 37362, 37369, 37370, 37371, 37373, 37374, 37377, 37378, 37381, 37382, 37385, 37386, 37389, 37391, 37392, 37396, 37407, 37438, 37439, 37441, Other Well - 005

Total Unconfined Flow System Wells = 156

Table 3 Proposed CMP Benchmark Water Quality Monitoring Network (continued)

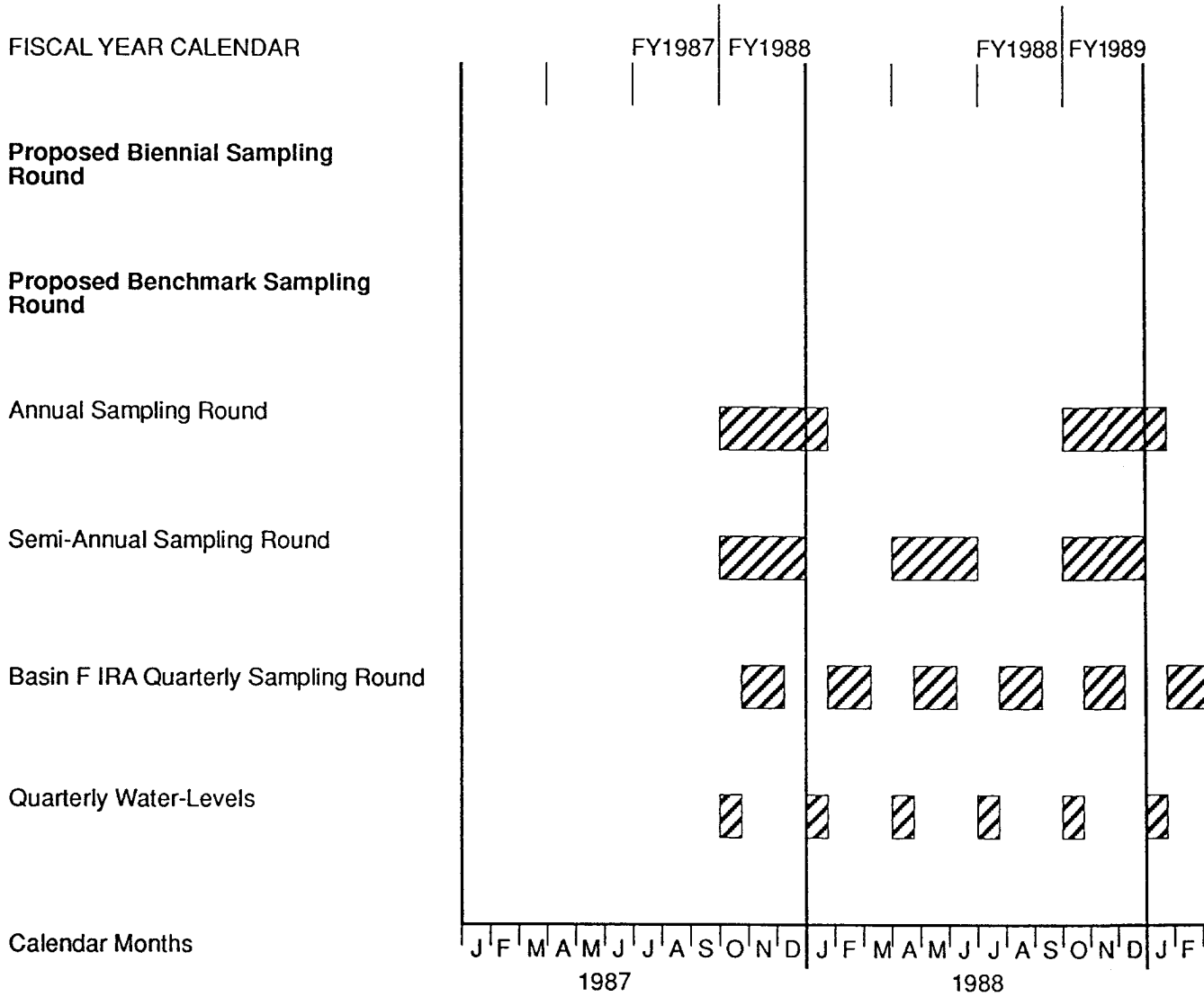
Section No.	Total Wells	Well Numbers
<u>Confined Flow System Wells</u>		
1	3	028, 029, 076
2	2	021, 025
22	6	023, 027, 028, 030, 031, 079
23	19	177, 180 ⁺ , 181 ⁺ , 183, 189 ⁺ , 190 ⁺ , 192 ⁺ , 193 ⁺ , 200, 201, 218, 219, 221 ⁺ , 222 ⁺ , 227, 230, 233, 234, 236
24	6	136, 168, 171, 172, 174, 175
26	15	066 ⁺ , 067 ⁺ , 072 ⁺ , 075 ⁺ , 084 ⁺ , 086 ⁺ , 129 ⁺ , 140 ⁺ , 142 ⁺ , 146 ⁺ , 149 ⁺ , 150 ⁺ , 153 ⁺ , 155 ⁺ , 156 ⁺
27	3	054, 055, 058
28	1	025
Offpost	12	37316, 37317, 37318, 37319, 37365, 37372, 37376, 37379, 37380, 37387, 37388, 37390

Total Confined Flow System Wells = 67

⁺ IRA Monitoring Network Wells

Table 4 Proposed CMP IRA Quarterly Sampling Network

Section No.	Total Wells	Well Numbers
<u>Unconfined Flow System Wells</u>		
23	13	049, 095, 108, 142, 179, 188, 191, 220, 237, 238, 239, 241, AMW-201
26	30	015, 017, 019, 020, 041, 065, 071, 073, 083, 085, 127, 133, 145, 148, 157, 160, 161, 162, 163, 164, 165, 166, 167, 168, 169, 170, 171, 173, 501, 503
27	1	016
35	2	505, 506
Total Unconfined Flow System Wells = 46		
<u>Confined Flow System Wells</u>		
23	8	180, 181, 189, 190, 192, 193, 221, 222
26	15	066, 067, 072, 075, 084, 086, 129, 140, 142, 146, 149, 150, 153, 155, 156
Total Confined Flow System Wells = 23		



Prepared for:
**Program Manager for
 Rocky Mountain Arsenal**
 Commerce City, Colorado

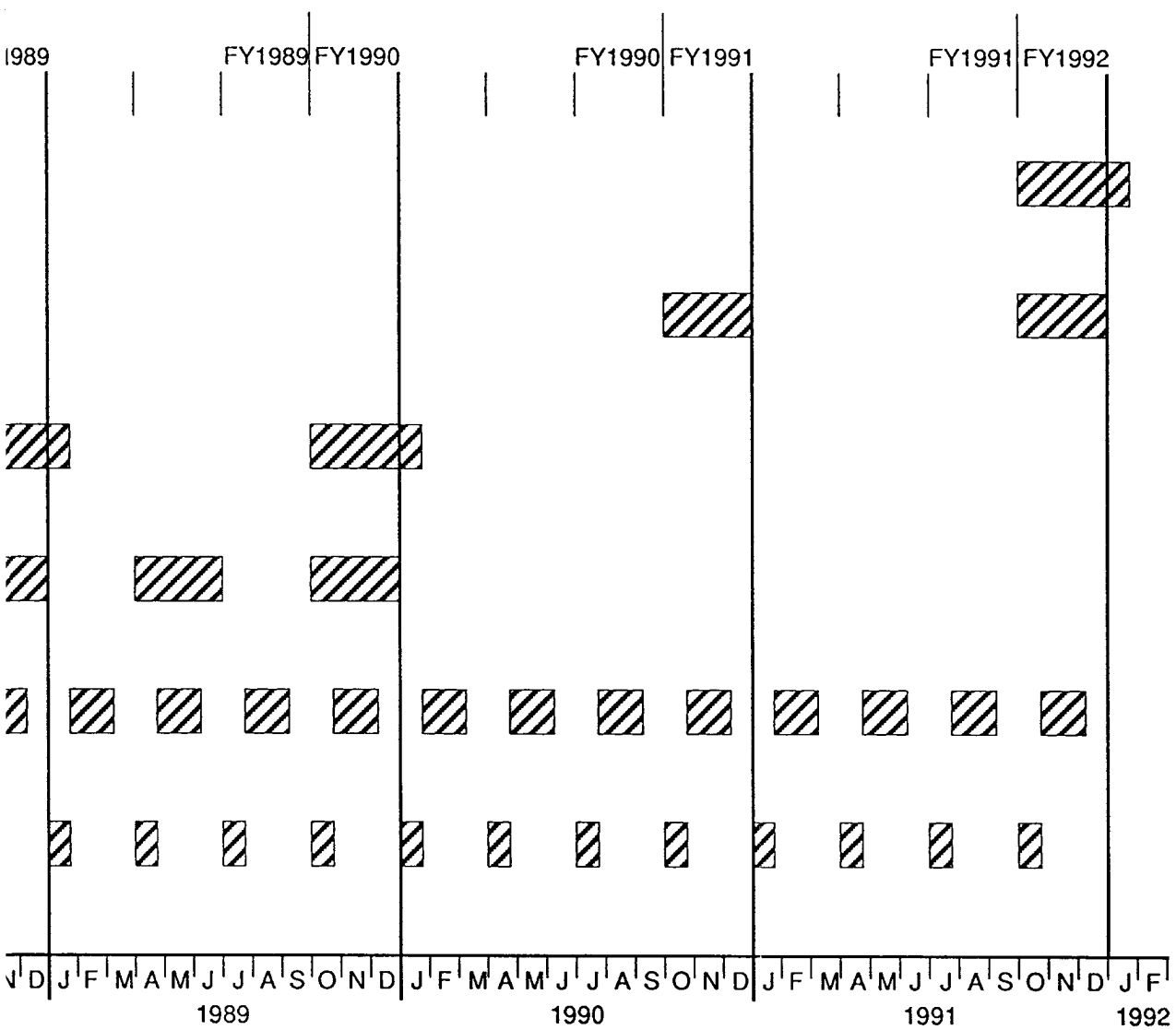
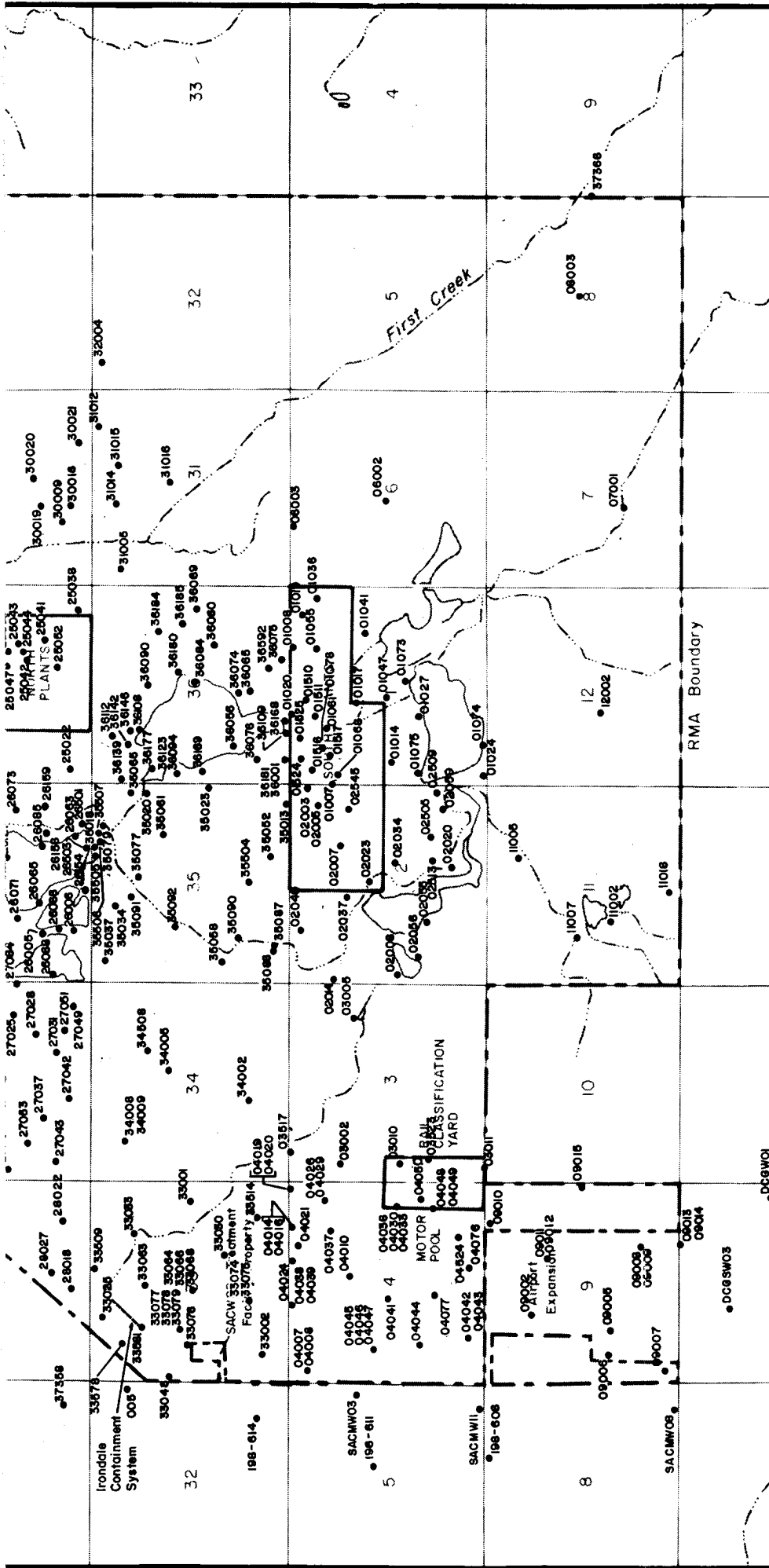


Figure 1
 PROPOSED CMP MONITORING SCHEDULE
 CMP Ground-Water Monitoring Technical Plan Addendum
 Prepared by: R.L. Stollar and Associates
 Harding Lawson Associates



Prepared for:

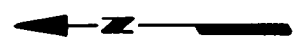
U.S. Army Program Manager for
 Rocky Mountain Arsenal
 Commerce City, Colorado

Prepared by:

R.L. Stollar & Associates, Inc.
 Harding Lawson Associates

Figure 2

**Unconfined Flow System Wells
 Proposed CMP Biennial
 Sampling Network**



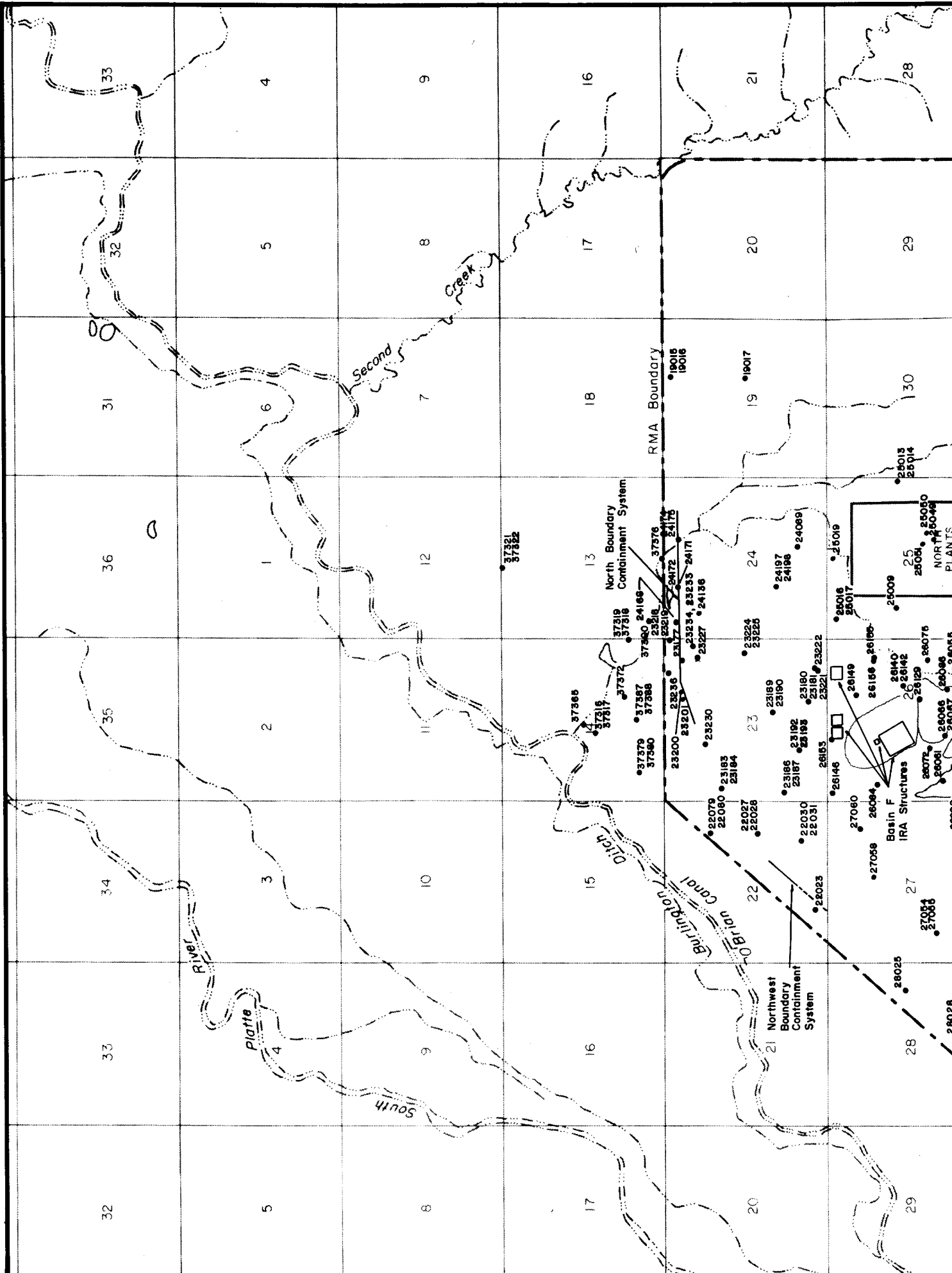
Explanation

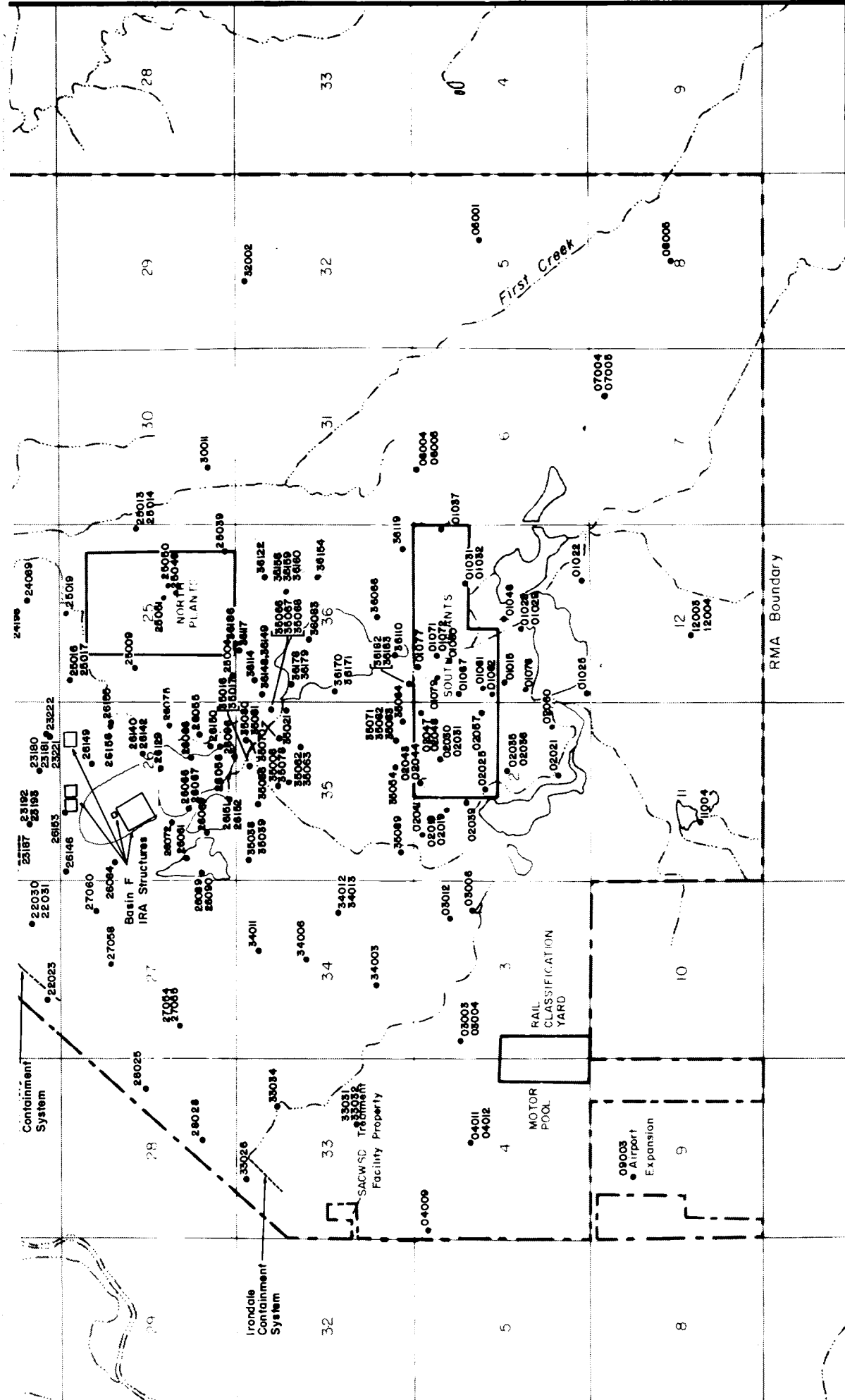
• 1007 Unconfined Well Location and Well Identification Number

— Containment System

— Physical Barrier

— Hydraulic Barrier





Prepared for :
 U.S. Army Program Manager for
 Rocky Mountain Arsenal
 Commerce City, Colorado

Prepared by :
 R.L. Stollar & Associates, Inc.
 Harding Lawson Associates

Figure 3
 Confined Flow System Wells

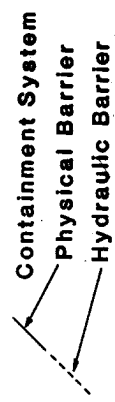
Explanation

- 34011 Denver Formation Well
- Location and Well Identification Number
- Containment System
- - - Physical Barrier
- - - Hydraulic Barrier

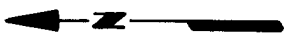
RMA Boundary

Explanation

• 34011 Denver Formation Well
Location and Well
Identification Number



Containment System
Physical Barrier
Hydraulic Barrier



Prepared for :

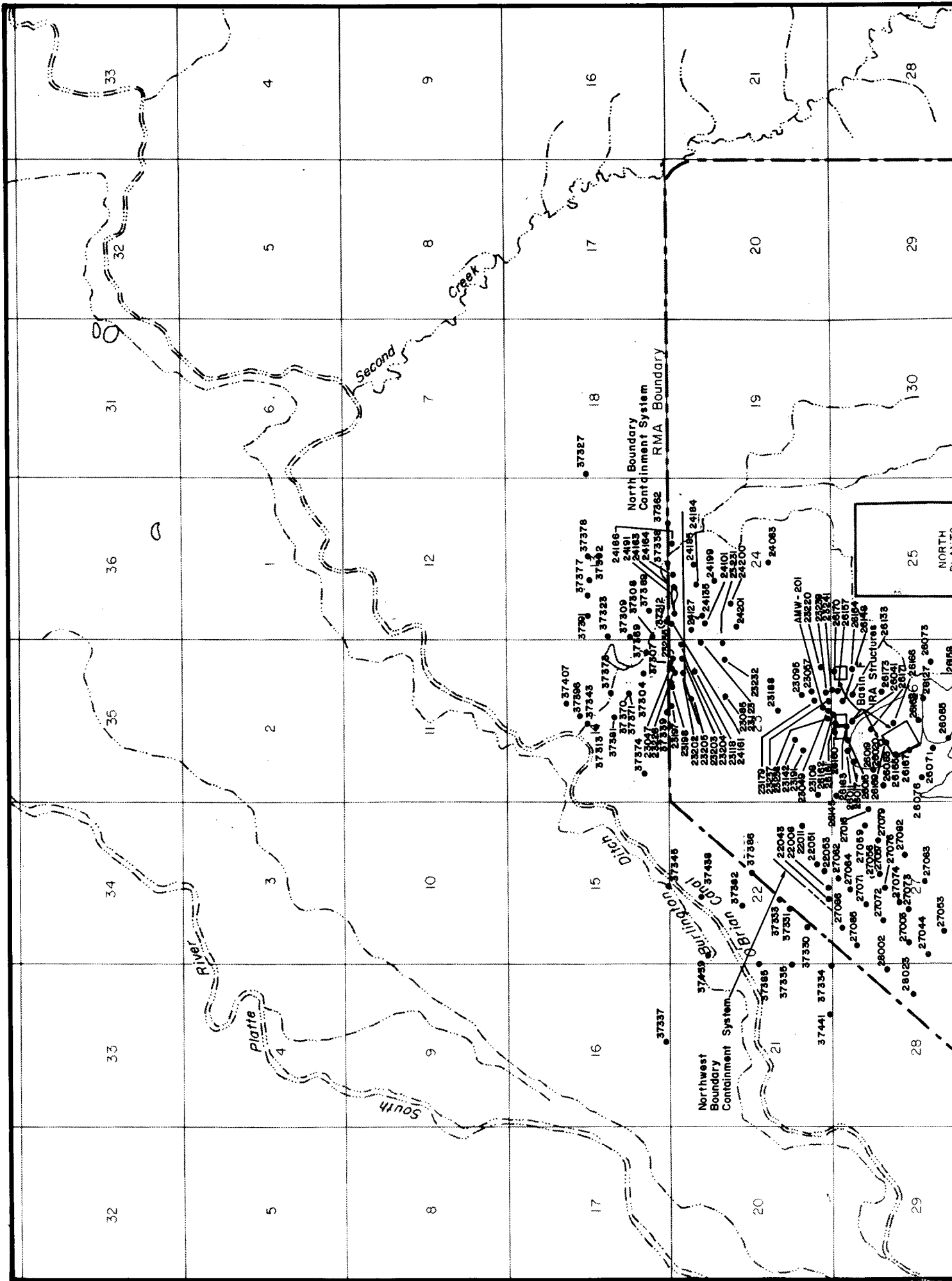
U.S. Army Program Manager for
Rocky Mountain Arsenal
Commerce City, Colorado

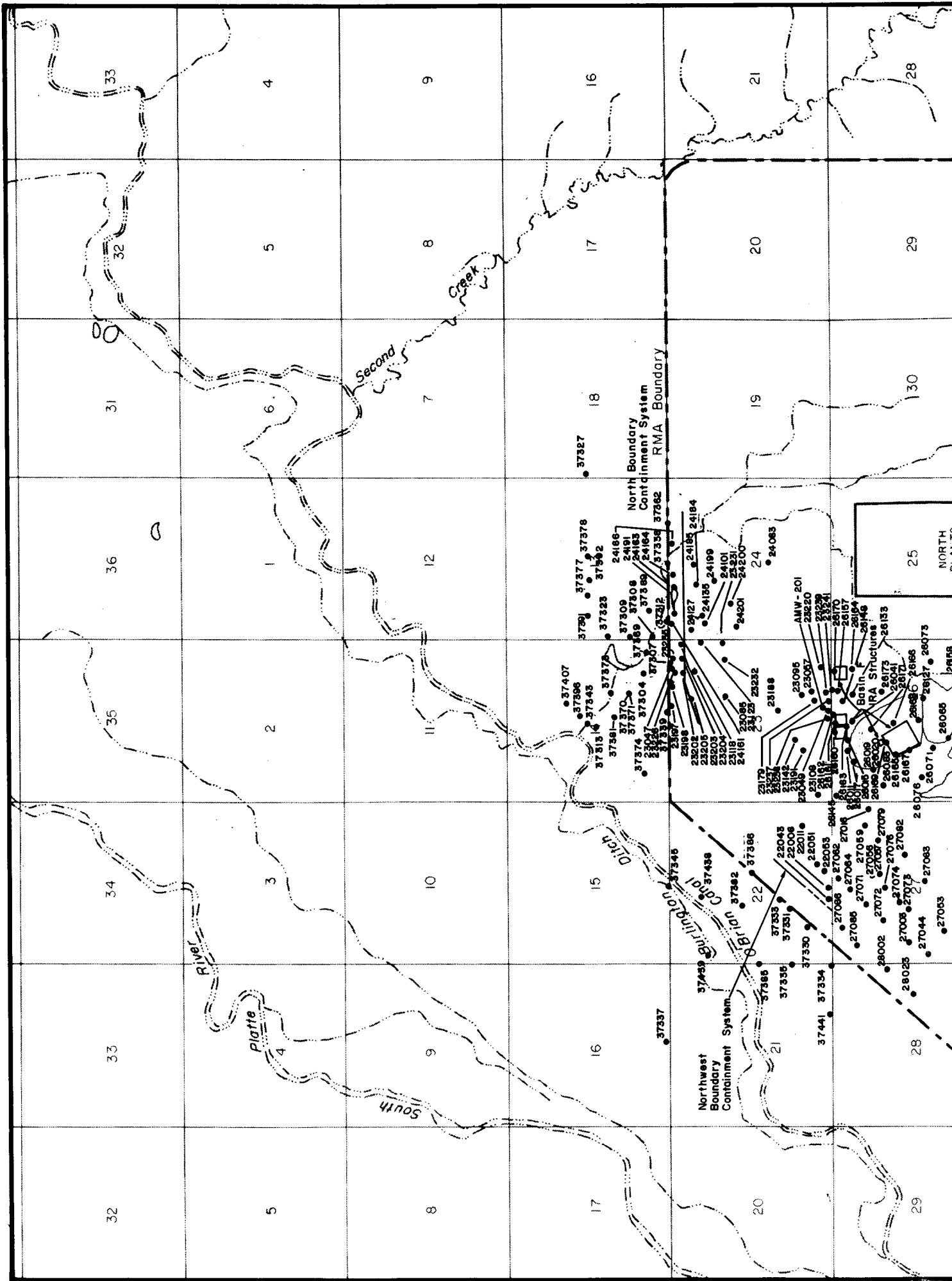
Prepared by :

R.L. Stollar & Associates, Inc.
Harding Lawson Associates

Figure 3

Confined Flow System Wells
Proposed CMP Biennial
Sampling Network





25
NORTH
PLANTS

North Boundary
Containment System
RMA Boundary

Northwest
Boundary
Containment System

AMW - 201
28220
28229
28170
28146
28145

IRA Structures
26173
26041
26174
26177
26187
26086
26127
26073

Basin
26133
26173
26041
26174
26177
26187
26086
26127
26073

28095
25097
28220
28229
28170
28146
28145

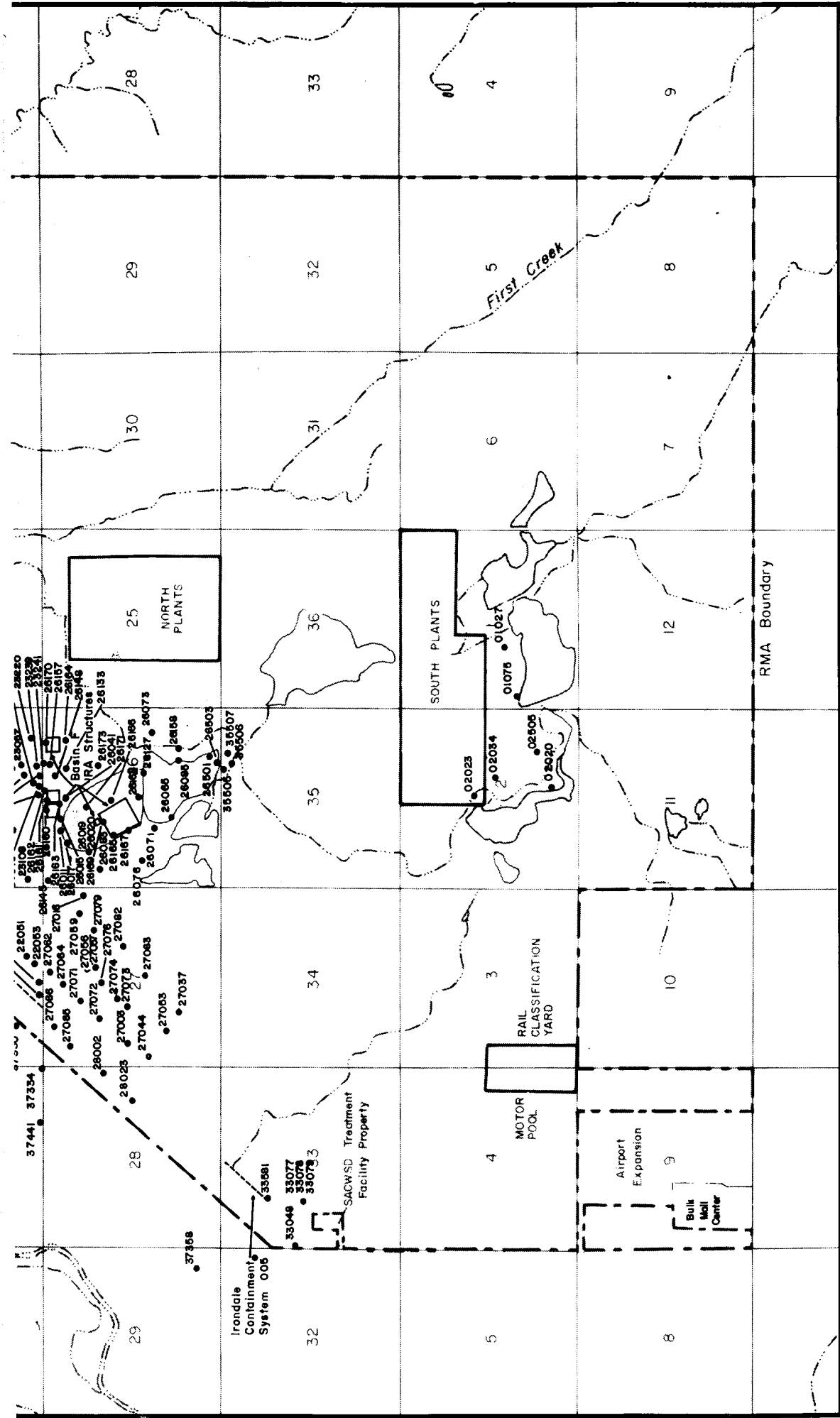
23179
23184
23142
23145
23146
23108
23102
23103
23104
23105
23106
23107
23108
23109
23110
23111
23112
23113
23114
23115
23116
23117
23118
23119
23120
23121
23122
23123
23124
23125
23126
23127
23128
23129
23130
23131
23132
23133
23134
23135
23136
23137
23138
23139
23140
23141
23142
23143
23144
23145
23146
23147
23148
23149
23150
23151
23152
23153
23154
23155
23156
23157
23158
23159
23160
23161
23162
23163
23164
23165
23166
23167
23168
23169
23170
23171
23172
23173
23174
23175
23176
23177
23178
23179
23180
23181
23182
23183
23184
23185
23186
23187
23188
23189
23190
23191
23192
23193
23194
23195
23196
23197
23198
23199
23200

28002
27075
27076
27077
27078
27079
27080
27081
27082
27083
27084
27085
27086
27087
27088
27089
27090
27091
27092
27093
27094
27095
27096
27097
27098
27099
27100
27101
27102
27103
27104
27105
27106
27107
27108
27109
27110
27111
27112
27113
27114
27115
27116
27117
27118
27119
27120
27121
27122
27123
27124
27125
27126
27127
27128
27129
27130
27131
27132
27133
27134
27135
27136
27137
27138
27139
27140
27141
27142
27143
27144
27145
27146
27147
27148
27149
27150
27151
27152
27153
27154
27155
27156
27157
27158
27159
27160
27161
27162
27163
27164
27165
27166
27167
27168
27169
27170
27171
27172
27173
27174
27175
27176
27177
27178
27179
27180
27181
27182
27183
27184
27185
27186
27187
27188
27189
27190
27191
27192
27193
27194
27195
27196
27197
27198
27199
27200

28025
27044
27063
27065

28025
27044
27063
27065

28025
27044
27063
27065



Prepared for :
 U.S. Army Program Manager for
 Rocky Mountain Arsenal
 Commerce City, Colorado

Prepared by :
 R.L. Stollar & Associates, Inc.
 Harding Lawson Associates

Figure 4

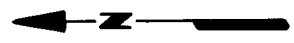
Unconfined Flow System Wells

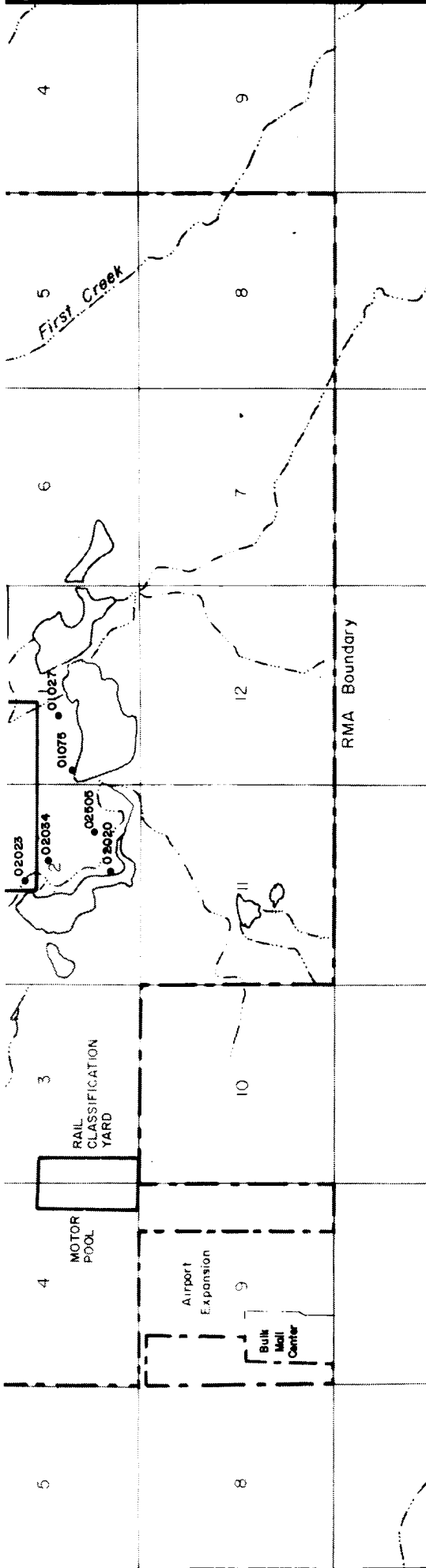
Explanation

3 561. Unconfined Well Location and Well Identification Number

Containment System

- Physical Barrier
- Hydraulic Barrier





Prepared for :
 U.S. Army Program Manager for
 Rocky Mountain Arsenal
 Commerce City, Colorado

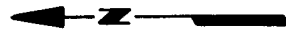
Prepared by :
 R.L. Stollar & Associates, Inc.
 Harding Lawson Associates

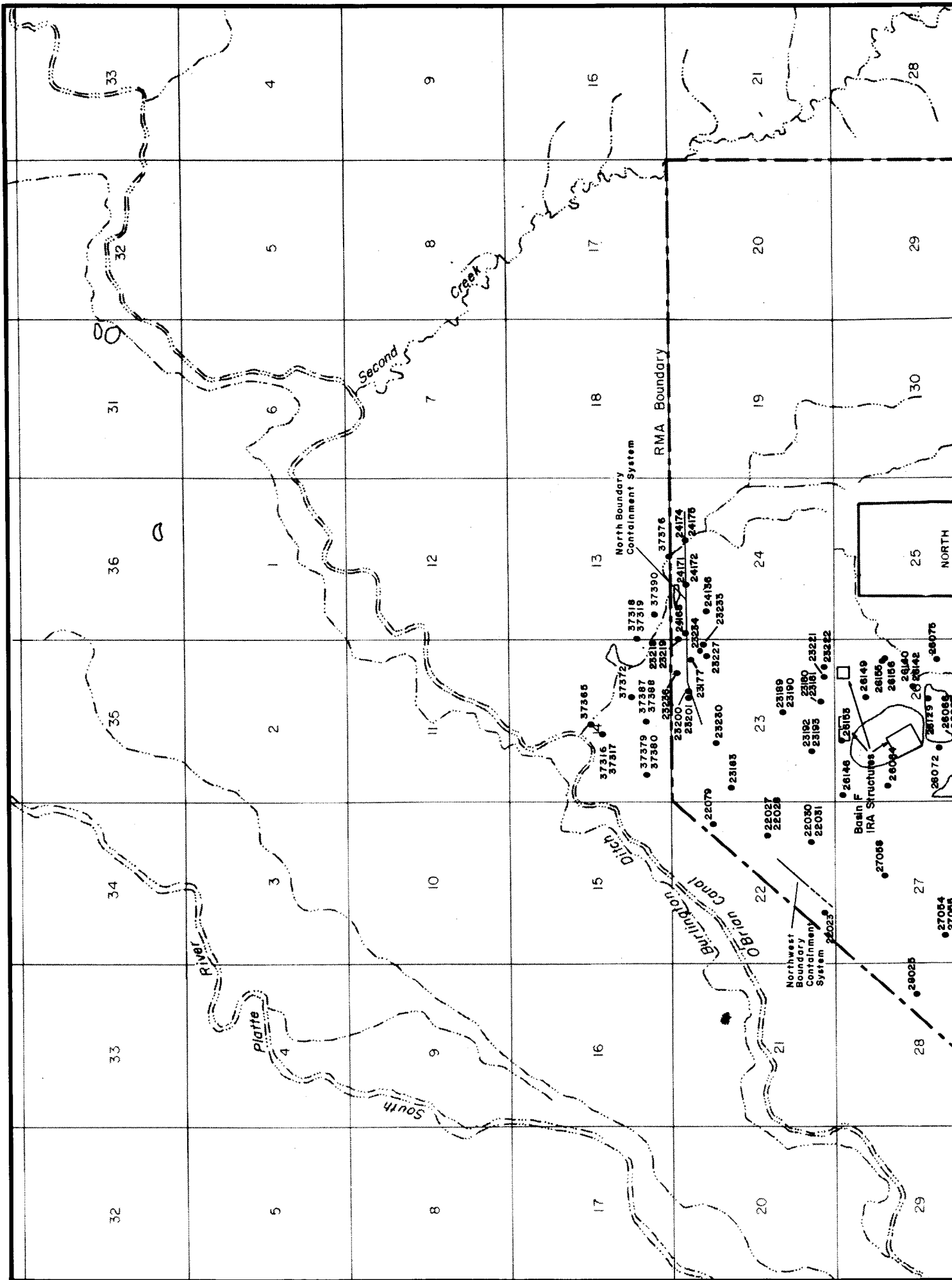
Figure 4
Unconfined Flow System Wells
Proposed CMP Benchmark
Sampling Network

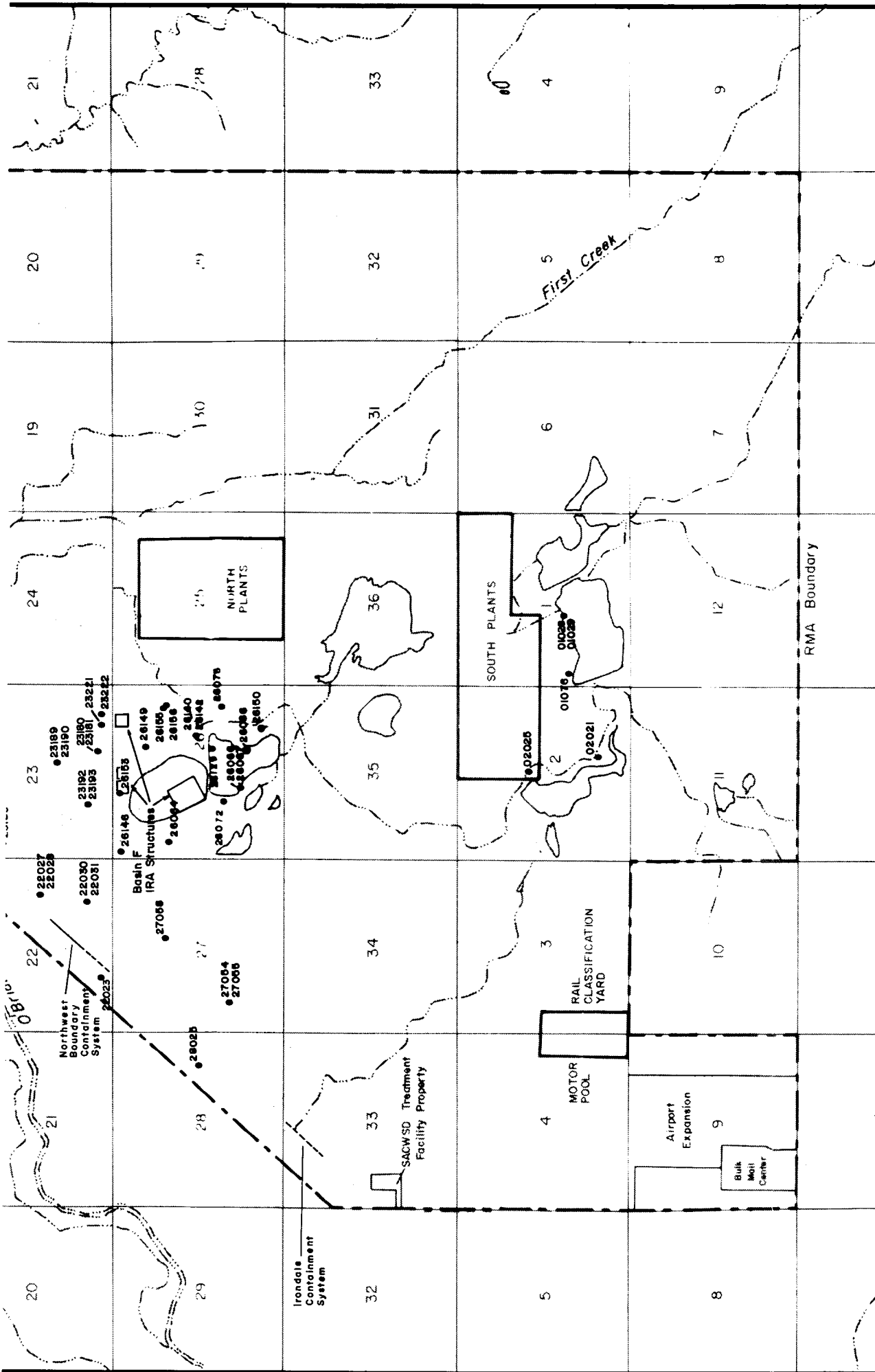
Explanation

3 561. Unconfined Well Location and Well Identification Number

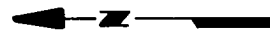
- Containment System
- Physical Barrier
- Hydraulic Barrier





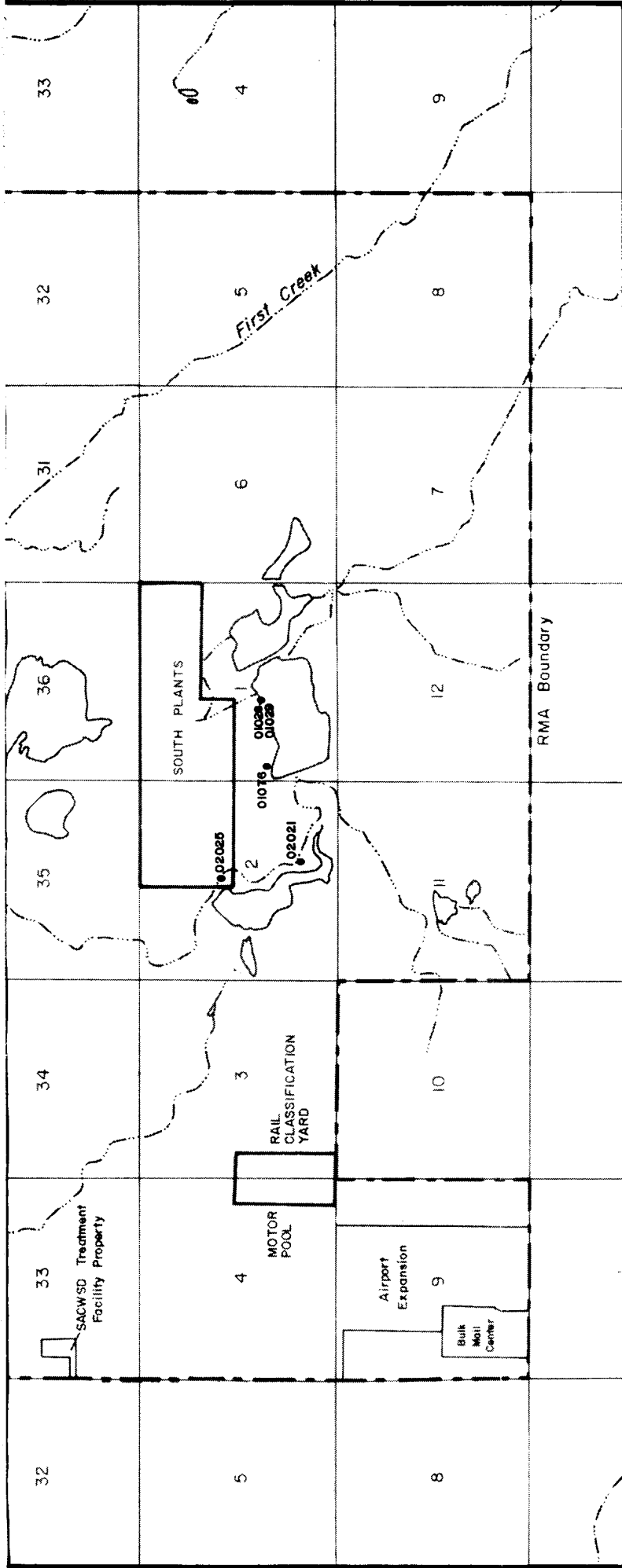


Prepared for:
 Program Manager's Office for
 Rocky Mountain Arsenal Cleanup
 Commerce City, Colorado



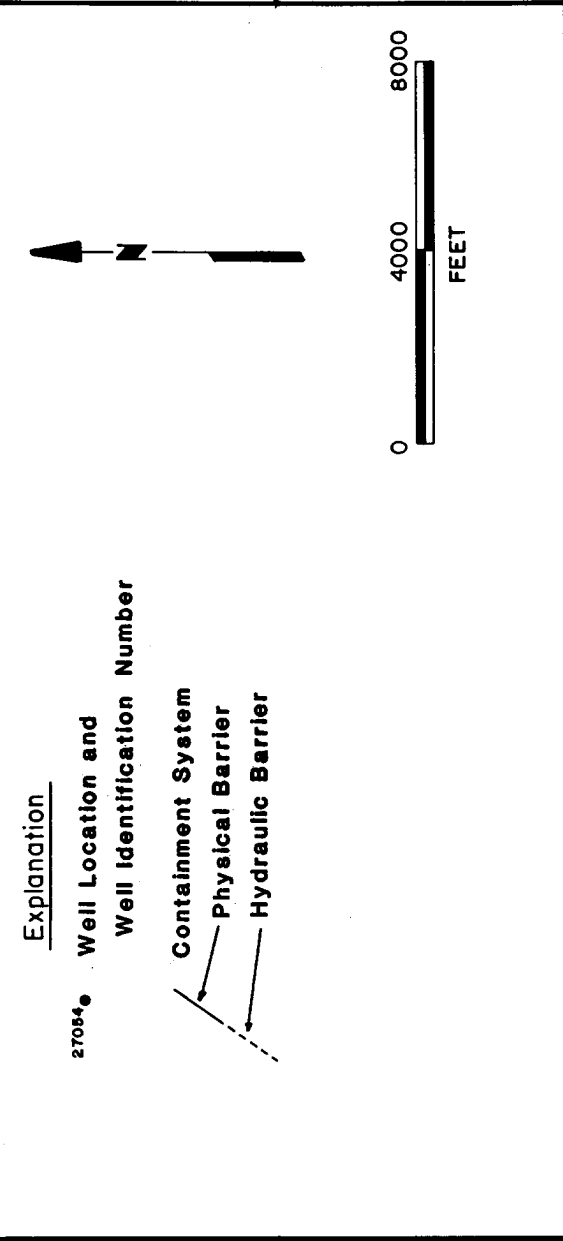
- Explanation**
- 27054 Well Location and Well Identification Number
 - Containment System
 - Physical Barrier
 - Hydraulic Barrier

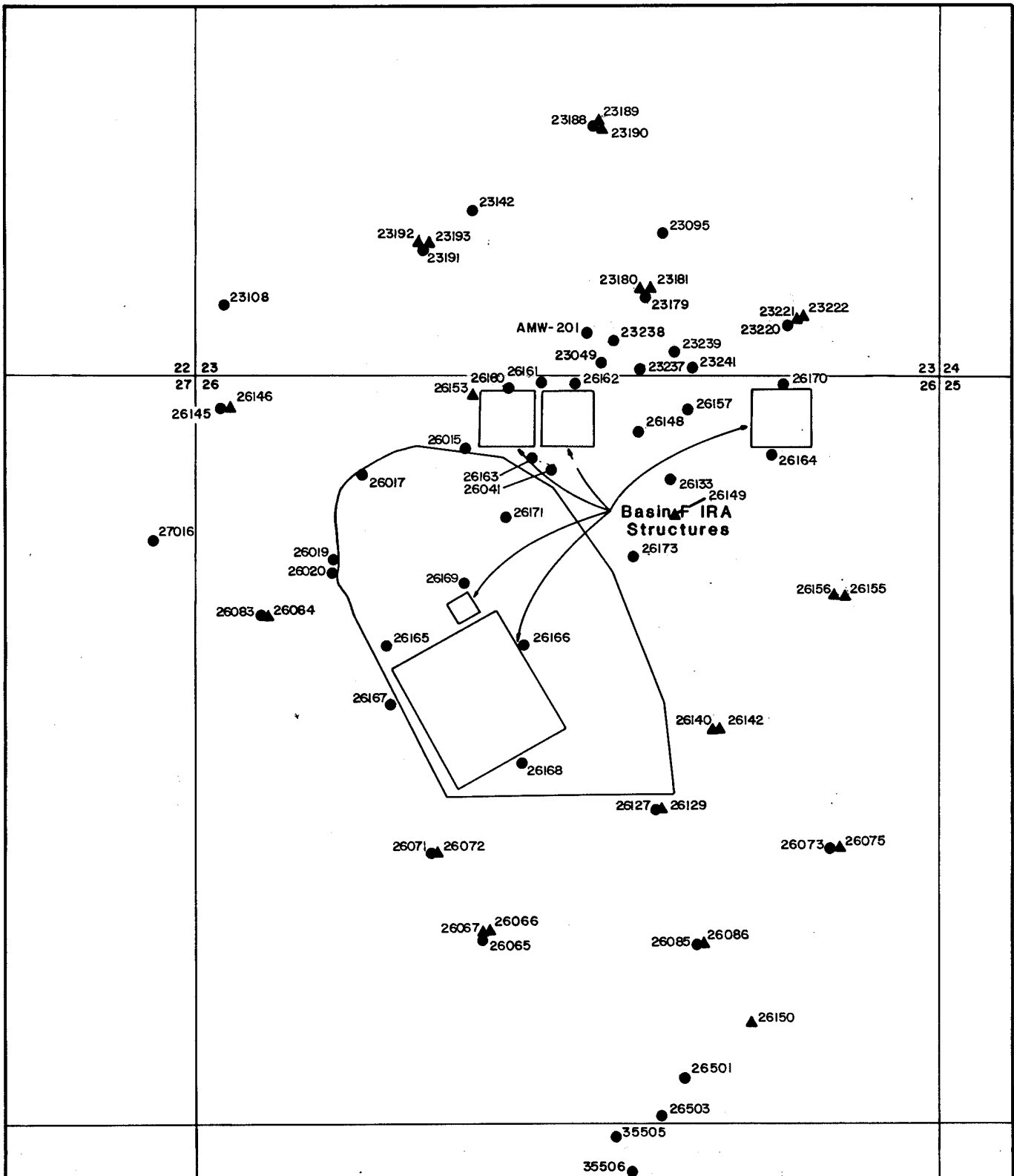
27054



Prepared for:
 Program Manager's Office for
 Rocky Mountain Arsenal Cleanup
 Commerce City, Colorado

FIGURE 5
 Confined Flow System Wells
 Proposed CMP Benchmark
 Sampling Network
 Prepared by: R.L. Stollar and Associates, Inc.
 Harding Lawson Associates





EXPLANATION

- 26167 ● Unconfined Well
- 23086 ▲ Denver Formation Well

Prepared for:
 U.S. Army Program Manager for
 Rocky Mountain Arsenal
 Commerce City, Colorado
 Prepared by:
 R. L. Stollar & Associates, Inc.
 Harding Lawson Associates

Figure 6
 Quarterly Sampling
 IRA Support Network

