

AD _____

GRANT NO: DAMD17-94-J-4150

TITLE:

Wnt-5a and wnt-4 regulates cell growth in C57MG mammary epithelial cells.

PRINCIPAL INVESTIGATOR:

Daniel J. Olson, Ph.D.

CONTRACTING ORGANIZATION:

The Pennsylvania State University
The Milton S. Hershey Medical Center
Hershey Pennsylvania 17033

REPORT DATE:

July 30, 1995

19950929 019

TYPE OF REPORT:

Annual

PREPARED FOR: U.S. Army Medical Research and Materiel
Command
Fort Detrick, Maryland 21702-5012

DISTRIBUTION STATEMENT: Approved for public release;
distribution unlimited

The views, opinions and/or findings contained in this report are those of the author(s) and should not be construed as an official Department of the Army position, policy or decision unless so designated by other documentation.

DTIC QUALITY INSPECTED 5

REPORT DOCUMENTATION PAGE

Form Approved
OMB No. 0704-0188

Public reporting burden for this collection of information is estimated to average 1 hour per response, including the time for reviewing instructions, searching existing data sources, gathering and maintaining the data needed, and completing and reviewing the collection of information. Send comments regarding this burden estimate or any other aspect of this collection of information, including suggestions for reducing this burden, to Washington Headquarters Services, Directorate for Information Operations and Reports, 1215 Jefferson Davis Highway, Suite 1204, Arlington, VA 22202-4302, and to the Office of Management and Budget, Paperwork Reduction Project (0704-0188), Washington, DC 20503.

1. AGENCY USE ONLY (Leave blank)	2. REPORT DATE July 30, 1995	3. REPORT TYPE AND DATES COVERED Annual 1 Jul 94 - 30 Jun 95
----------------------------------	---------------------------------	---

4. TITLE AND SUBTITLE WNT-5a and WNT-4 Regulates Cell Growth in C57MG Mammary Epithelial Cells	5. FUNDING NUMBERS DAMD17-94-J-4150
---	--

6. AUTHOR(S) Daniel J. Olson, Ph.D.	
--	--

7. PERFORMING ORGANIZATION NAME(S) AND ADDRESS(ES) Pennsylvania State University Milton S. Hershey Medical Center Hershey, Pennsylvania 17033	8. PERFORMING ORGANIZATION REPORT NUMBER
--	--

9. SPONSORING / MONITORING AGENCY NAME(S) AND ADDRESS(ES) U.S. Army Medical Research and Materiel Command Fort Detrick, Maryland 21702-5012	10. SPONSORING / MONITORING AGENCY REPORT NUMBER
---	--

11. SUPPLEMENTARY NOTES

12a. DISTRIBUTION / AVAILABILITY STATEMENT Approved for public release, distribution unlimited	12b. DISTRIBUTION CODE
---	------------------------

13. ABSTRACT (Maximum 200 words)

The implications for determining whether *wnt-5a* and *wnt-4* act as mediators of normal cell growth are relevant to the detection, diagnosis, and the treatment of breast cancer. That is, it is important ultimately to understand whether the inappropriate downregulation of certain *wnt*-genes that are spatially-temporally expressed in developing mammary glands, such as *wnt-5a* and *wnt-4*, leads to loss of growth control.

C57MG mammary epithelial cells have recently been found to endogenously express *wnt-5a* and *wnt-4* whose RNA levels are reduced in the presence *wnt*-gene family members which transform this cell line. The intent of this proposal has been to develop new cell lines by transfecting C57MG cells with DNA *wnt-5a* and/or *wnt-4* constructs which express antisense RNA to determine whether cell transformation will occur. In conjunction with this, new cell lines were also to be formulated by overexpressing *wnt-5a* and/or *wnt-4* in an attempt to revert an already transformed phenotype. Preliminary results found are consistent with the importance for normal *wnt-5a* and/or RNA transcripts levels in directing C57MG mammary epithelial cell phenotype, including cell proliferation and transformation.

14. SUBJECT TERMS Oncogene Breast Cancer Transformation Wnt#Genes Cell Growth/Differentiation	15. NUMBER OF PAGES 15
	16. PRICE CODE

17. SECURITY CLASSIFICATION OF REPORT Unclassified	18. SECURITY CLASSIFICATION OF THIS PAGE Unclassified	19. SECURITY CLASSIFICATION OF ABSTRACT Unclassified	20. LIMITATION OF ABSTRACT Unlimited
---	--	---	---

enclosure

GENERAL INSTRUCTIONS FOR COMPLETING SF 298

The Report Documentation Page (RDP) is used in announcing and cataloging reports. It is important that this information be consistent with the rest of the report, particularly the cover and title page. Instructions for filling in each block of the form follow. It is important to *stay within the lines* to meet *optical scanning requirements*.

Block 1. Agency Use Only (Leave blank).

Block 2. Report Date. Full publication date including day, month, and year, if available (e.g. 1 Jan 88). Must cite at least the year.

Block 3. Type of Report and Dates Covered. State whether report is interim, final, etc. If applicable, enter inclusive report dates (e.g. 10 Jun 87 - 30 Jun 88).

Block 4. Title and Subtitle. A title is taken from the part of the report that provides the most meaningful and complete information. When a report is prepared in more than one volume, repeat the primary title, add volume number, and include subtitle for the specific volume. On classified documents enter the title classification in parentheses.

Block 5. Funding Numbers. To include contract and grant numbers; may include program element number(s), project number(s), task number(s), and work unit number(s). Use the following labels:

C - Contract	PR - Project
G - Grant	TA - Task
PE - Program Element	WU - Work Unit Accession No.

Block 6. Author(s). Name(s) of person(s) responsible for writing the report, performing the research, or credited with the content of the report. If editor or compiler, this should follow the name(s).

Block 7. Performing Organization Name(s) and Address(es). Self-explanatory.

Block 8. Performing Organization Report Number. Enter the unique alphanumeric report number(s) assigned by the organization performing the report.

Block 9. Sponsoring/Monitoring Agency Name(s) and Address(es). Self-explanatory.

Block 10. Sponsoring/Monitoring Agency Report Number. (If known)

Block 11. Supplementary Notes. Enter information not included elsewhere such as: Prepared in cooperation with...; Trans. of...; To be published in.... When a report is revised, include a statement whether the new report supersedes or supplements the older report.

Block 12a. Distribution/Availability Statement. Denotes public availability or limitations. Cite any availability to the public. Enter additional limitations or special markings in all capitals (e.g. NOFORN, REL, ITAR).

DOD - See DoDD 5230.24, "Distribution Statements on Technical Documents."

DOE - See authorities.

NASA - See Handbook NHB 2200.2.

NTIS - Leave blank.

Block 12b. Distribution Code.

DOD - Leave blank.

DOE - Enter DOE distribution categories from the Standard Distribution for Unclassified Scientific and Technical Reports.

NASA - Leave blank.

NTIS - Leave blank.

Block 13. Abstract. Include a brief (*Maximum 200 words*) factual summary of the most significant information contained in the report.

Block 14. Subject Terms. Keywords or phrases identifying major subjects in the report.

Block 15. Number of Pages. Enter the total number of pages.

Block 16. Price Code. Enter appropriate price code (*NTIS only*).

Blocks 17. - 19. Security Classifications. Self-explanatory. Enter U.S. Security Classification in accordance with U.S. Security Regulations (i.e., UNCLASSIFIED). If form contains classified information, stamp classification on the top and bottom of the page.

Block 20. Limitation of Abstract. This block must be completed to assign a limitation to the abstract. Enter either UL (unlimited) or SAR (same as report). An entry in this block is necessary if the abstract is to be limited. If blank, the abstract is assumed to be unlimited.

FOREWORD

Opinions, interpretations, conclusions and recommendations are those of the author and are not necessarily endorsed by the US Army.

Where copyrighted material is quoted, permission has been obtained to use such material.

Where material from documents designated for limited distribution is quoted, permission has been obtained to use the material.

DR Citations of commercial organizations and trade names in this report do not constitute an official Department of Army endorsement or approval of the products or services of these organizations.

DR In conducting research using animals, the investigator(s) adhered to the "Guide for the Care and Use of Laboratory Animals," prepared by the Committee on Care and Use of Laboratory Animals of the Institute of Laboratory Resources, National Research Council (NIH Publication No. 86-23, Revised 1985).

For the protection of human subjects, the investigator(s) adhered to policies of applicable Federal Law 45 CFR 46.

DR In conducting research utilizing recombinant DNA technology, the investigator(s) adhered to current guidelines promulgated by the National Institutes of Health.

DR In the conduct of research utilizing recombinant DNA, the investigator(s) adhered to the NIH Guidelines for Research Involving Recombinant DNA Molecules.

DR In the conduct of research involving hazardous organisms, the investigator(s) adhered to the CDC-NIH Guide for Biosafety in Microbiological and Biomedical Laboratories.

Accession For	
NTIS CRA&I	<input checked="" type="checkbox"/>
DTIC TAB	<input type="checkbox"/>
Unannounced	<input type="checkbox"/>
Justification	
By	
Distribution /	
Availability Codes	
Dist	Avail and/or Special
A-1	

Daniel Olson 7/30/85
PI - Signature Date

Table of Contents

	Pages
Front Cover	i
SF 298 Report Documentation Page	ii
Foreword	iii
Table of Contents	iv
Introduction	1-3
Body of Report	3-5
Conclusions	5
References	6-7
Appendices	8-11

Introduction

Wnt-gene family

The sixteen known members of the *wnt* family of genes express growth factor-like molecules which are thought to be implicated in mammary tumorigenesis and in early developmental events. The *wnt-1* gene was first identified in mouse mammary tumor virus (MMTV) induced tumors occurring often in certain mouse strains (1). Analysis of these tumors revealed that MMTV proviral integration occurred in close proximity to either the 5' or 3' region of the *wnt-1* gene locus, presumably activating *wnt-1* through MMTV enhancer sequences (2). Since these insertions do not interrupt the protein coding sequences (3), there is expression of an intact protein. Therefore, inappropriate expression of the normal *wnt-1* protein is implicated in cellular transformation. *Wnt-2* and *Wnt-3* have also been isolated from several mouse mammary tumors with activated MMTV provirus (4).

Wnt-gene mechanism of action

The mechanism of action of *wnt* genes is unknown, although several characteristics have been reported which provide insight into how their products may be important. Analysis of genomic (3) and cDNA (5) sequences has revealed that mouse *wnt-1* encodes a cysteine rich 370 amino acid polypeptide with a leader sequence. The leader sequence, which has a potential peptidase cleavage site after amino acid 27 (6), appears to be necessary for protein function (7). Previous studies suggest that *wnt-1* protein enters the secretory pathway, is glycosylated, and may be secreted (8), but remains strongly bound to the cell surface and/or extracellular matrix (9,10), possibly to heparin (10), and is seldom found in the medium of cultured cells (9). This suggests that *wnt-1* acts locally, possibly in an autocrine or paracrine manner. This is strengthened by the finding that mouse *wnt-1* when transfected into 3T3 fibroblasts, which resulted in no obvious phenotype, can yet transform the mammary epithelial cell-line C57MG when co-cultured (11). This may be related to competence modification of cells by *wnt* signals to growth factors, including bFGF and activin (12). It has been speculated that this may occur at least in part through *wnt*-mediated gap junctional communication (13-15) as a result of influencing the expression of β -catenin to ultimately enhance Ca^{2+} dependent cadherin-associated cell adhesion (16).

Wnt-genes in mammary cell differentiation and in tumorigenesis

Besides the ability of the expression of certain *wnts* to determine cell competence during pattern formation in vertebrate development, an *in vivo* role for MMTV directed *wnt-1* expression in mammary tumorigenesis has been directly shown in transgenic mice (17). More recently, *wnt-3* has also been found to be transcriptionally activated by MMTV provirus in mouse mammary carcinomas (7). In addition, *wnt-2* has been implicated in mammary tumorigenesis since it is overexpressed and amplified in transplanted virally induced tumors (4). In cell culture systems, the ectopic expression of *wnt-1* or *wnt-2* is able to transform certain mammary epithelial cell lines (7), including C57MGs derived from normal mammary gland of a C57 B 1/6 mouse (18). However, little is known how various members of the *wnt*-gene are capable of transforming mammary epithelial cells and are involved in mammary tumorigenesis. Some investigators believe that *wnt-1* and other transforming *wnt*-gene peptides act on endogenous *wnt*-gene signalling pathways to transform cell types.

Recent findings by Gavin and McMahon (19) have demonstrated that at least five

members of the fifteen known mouse *wnt*-genes, including *wnt-5a* and *wnt-4*, are differentially expressed during the postnatal development of the mouse mammary gland, implicating their importance in mammary development. That is, *wnt-5a* and *wnt-4* and other *wnts* are expressed in virgin glands and during early to mid-pregnancy. However, when pregnancy approaches term, these same genes become nonexpressive and other types of *wnt*-genes are concomitantly transcriptionally activated. That is, *wnt-2* has recently been detected during the ductal phase of mammary gland development and reduced at the onset of pregnancy and lactation, a profile opposite to that found for *wnt-5a* and *wnt-4* (20). **This interplay between various *wnt*-gene family members in mammary gland development may have implications for how *wnt-1* and *wnt-2* are able to transform cells. That is, the type of *wnt*-gene ultimately expressed may dictate the competence of the cell to respond to various growth factors and hormones and thus dictate the pattern of cell growth.**

Growth factors have been shown to cooperate with some *wnt*-peptides during early vertebrate development (12). This may also be relevant to how *wnt*-gene peptides are involved in tumorigenesis and in the *wnt*-mediated transformation of certain cell lines. In support of this, the influence of *wnt-1*, *wnt-2*, *int-2*, bFGF, EGF, and TGF- β 1 on C57MG mammary epithelial cell phenotype has recently been reported (21). In addition, C57MG cells have recently been found to endogenously express *wnt-5a* and *wnt-4* (19). Other experiments have revealed that there is a reduction of endogenous *wnt-5a* and/or *wnt-4* RNA levels in the presence of each growth factor tested, including the *wnt-1* and *wnt-2* gene products (21). Furthermore, when C57MGs that were fully transformed by the ectopic expression of activated *neu* T [c-erbB2 (22)] were analyzed, it was found that transcriptional expression for each endogenous gene was virtually absent. **This suggests that endogenous *wnt-5a* and *wnt-4* genes in C57MG mammary epithelial cells may play a functional role in determining cell growth** and that adequate RNA expression levels of both may be important in controlling cell proliferation and perhaps transformation (21).

The implications for determining whether *wnt-5a* and *wnt-4* act as mediators of normal cell growth are relevant to the detection, diagnosis, and the treatment of breast cancer. That is, it is important ultimately to understand whether the inappropriate downregulation of certain *wnt*-genes that are spatially-temporally expressed in developing mammary glands, such as *wnt-5a* and *wnt-4*, leads to loss of growth control. This would have direct application to testing biopsied mammary tissue for loss of appropriate *wnt*-gene expression and whether the re-establishment of gene expression could result in reversal of transformation. This proposal was submitted for a **Career Development Award** to allow the opportunity to direct the laboratory toward continuing to pursue the long term goal of understanding and controlling breast cancer. The Principal Investigator is in a unique position as a member of a surgical department clinically involved in the treatment of breast cancer to examine underlying basic mechanisms.

With this in mind, a series of technical objectives was formulated, as summarized below, in order to determine the importance of *wnt*-genes in cell growth and differentiation. It was proposed that:

1. Fully transformed *neu*-T (c-erbB2) activated C57MG mammary epithelial cells would be transfected with sense *wnt-5a* and/or *wnt-4* DNA constructs in a manner which allows for clonal selection in hygromycin B. The same was to be done for partially transformed C57MG mammary epithelial cells constitutively expressing *wnt-1*. Anchorage independent soft agar assays was to be done to determine whether the transfectants have regained cell contact growth dependence and ^3H -thymidine assays would be done to determine whether the transfectants have lost the ability to proliferate at confluence, which is a hallmark of transformation in this cell type.

2. To ascertain whether *wnt-5a* and *wnt-4* genes act as repressors of cell proliferation in C57MG mammary epithelial cells, DNA constructs were to be made to express anti-sense RNA for *wnt-5a* and *wnt-4*. These constructs would be co-transfected with plasmids containing a NEO-resistant gene into the C57MG parental cell line to allow for clonal selection in G-418. Anchorage independent soft agar assays were to be done to determine whether the transfectants have gained contact growth independence. ³H-thymidine assays were to be done to determine whether the transfectants have gained the ability to proliferate at confluence unlike the parental cells.

3. Since there is little information concerning the expression of *wnt-5a* and *wnt-4* in mouse or human mammary cell lines or tumors, human and mouse cell lines as well as tumors were to be probed for the expression of *wnt-5a* and *wnt-4* by Northern blot analysis. Assuming there is significant loss in the expression of *wnt-5a* and/or *wnt-4* which correlates with malignant transformation, an attempt was to be made to re-express these genes to in order to re-establish growth control using nude mice.

Body

Experimental Methods

1. Transfection of transformed C57MG mammary epithelial cells not expressing *wnt-5a* or *wnt-4* normally.

Transformed C57MG cells expressing activated V659E rat *neu* gene (provided by Oncogene Science) under the control of an MLV LTR promoter were maintained in Dulbecco's modified Eagle (DME) medium supplemented with 5% fetal calf serum and 5% bovine calf serum (HyClone), and 250 ug/ml G-418 (Gibco). The cells were transfected with the mammalian expression vector pRSV ligated to *wnt-5a* or *wnt-4* (provided by Andrew McMahon, Harvard) in the sense orientation using lipofection as described (23). The cells were co-transfected with the SV2HYG mammalian expression vector carrying the gene for hygromycin B resistance, and resistant colonies selected and expanded into cell lines. RNA was extracted (24) and cells expressing *wnt-5a* and *wnt-4* verified by Northern blot analysis using specific hybridization probes for *wnt-5a* and *wnt-4* and compared to those cells only transfected with the SV2HYG vector. The same technique was used to transfect *wnt-1* expressing C57MG cells (provided by Jackie Papkoff, Sugan, California) which are maintained normally in Dulbecco's modified Eagle medium as above also supplemented with 250 ug/ml G-418 (Gibco) with pRSV*wnt-5a* and/or pRSV*wnt-4*.

RNA isolation and Northern Blot Analysis

Total cellular RNA was isolated from multiple dishes of confluent cells (24). Twenty ug of total RNA was analyzed when probing for transfected gene expression. To ascertain effects on endogenous levels of *wnt* RNA transcripts, it was necessary to select for poly (A+) RNA using an oligo d(T) cellulose column. Two ug of each poly (A+) RNA sample were separated on a 1.2% agarose formaldehyde gel followed by transfer to a Hybond-N (Amersham) membrane. The membranes were cross-linked (Stratagene) and prehybridized for 3-6 hours at 61°C, and then hybridized at 61°C overnight with labeled riboprobes made with a Ribosystem II kit (Promega). The riboprobe vectors containing sequences for *wnt-4* or *wnt-5a* (McMahon, Harvard) have been described (19). The hybridization/prehybridization solution consisted of 50% formamide, 4X SSPE, 0.2 mg/ml sheared salmon sperm DNA, 2.5X Denhardt's, and 1% sodium dodecyl sulfate (SDS). Membranes were washed at room temperature twice in 2X SSC, 1% SDS, followed by several washes in 0.1X SSC, 0.1% SDS at 65°C.

Cell Morphology Assays

Cells lines were maintained in G-418 and hygromycin B and grown to confluence. C57MG/*wnt-1*, C57MG/*neu T*, C57MG, C57MG/*wnt-1/wnt-5a* and/or *wnt-4*, and C57MG/*neu T/wnt-5a* and/or *wnt-4* cells were plated at a density of 5×10^5 cells per 10 cm tissue culture dish and photographed for phenotype comparison.

2. Transfection of C57MG mammary epithelial cells with antisense constructs for *wnt-5a* or *wnt-4*.

The cells were initially maintained in Dulbecco's modified Eagle's medium until mid-log phase and transfected by lipofection (23) with either pRSV*wnt-5a* and/or *wnt-4* DNA mammalian expression vectors ligated in the antisense orientation. The cells were co-transfected with the mammalian expression vector SV2NEO to allow for clonal selection in G-418. Individual resistant colonies were selected and expanded into cell lines. To determine whether the antisense RNA leads to specific loss of *wnt-5a* or *wnt-4* transcripts, Northern blots were done.

RNA isolation and Northern Blot Analysis

Total cellular RNA was isolated from multiple dishes of confluent cells (24). Twenty μg of total RNA was analyzed when probing for transfected gene expression. To ascertain effects on endogenous levels of *wnt* RNA transcripts, it was necessary to select for poly (A+) RNA using an oligo d(T) cellulose column (62). Two μg of each poly (A+) RNA sample were separated on a 1.2% agarose formaldehyde gel followed by transfer to a Hybond-N (Amersham) membrane. The membranes were cross-linked (Stratagene) and prehybridized for 3-6 hours at 61°C , and then hybridized at 61°C overnight with labeled riboprobes made with a Ribosystem II kit (Promega). The riboprobe vectors containing sequences for *wnt-4* or *wnt-5a* (McMahon, Harvard) have been described (19). The hybridization/prehybridization solution consisted of 50% formamide, 4X SSPE, 0.2 mg/ml sheared salmon sperm DNA, 2.5X Denhardt's, and 1% sodium dodecyl sulfate (SDS). Membranes were washed at room temperature twice in 2X SSC, 1% SDS, followed by several washes in 0.1X SSC, 0.1% SDS at 65°C .

Cell Morphology Assays

Cells lines were maintained in G-418 and hygromycin B and grown to confluence. C57MG/*wnt-1*, C57MG/*neu T*, C57MG, C57MG/*wnt-1/wnt-5a* and/or *wnt-4*, and C57MG/*neu T/wnt-5a* and/or *wnt-4* cells were plated at a density of 5×10^5 cells per 10 cm tissue culture dish and photographed for phenotype comparison.

Preliminary Results

Preliminary studies indicate that transfecting *wnt-1* expressing C57MG cells with a construct which constitutively expresses *wnt-4* partially rescues the *wnt-1* mediated transformed phenotype based on morphologic assays as indicated in the microphotographs in Fig 1. It was also found that C57MG cells fully transformed with *neu T* also revert to a more normal appearing phenotype by morphologic criteria particularly when the cells are transfected simultaneously with both *wnt-5a* and *wnt-4* as shown in Fig 2.

To determine whether the endogenous expression of *wnt-4* and/or *wnt-5a* are important for normal cell growth, DNA constructs were made which allow for the expression of *wnt-4* or *wnt-5a* antisense RNA. By morphologic criteria, antisense *wnt-5a* dramatically alters cell phenotype, as noted in Fig 3 (b) and (c) when compared to the normal parental line as shown in Fig 3 (a) and Fig 1 (a). This change in phenotype mimics the transformed phenotype observed in the presence of the overexpression of *wnt-1* in this cell line, as shown in Fig 1 (b). Furthermore, cells which are expressing antisense *wnt-5a* have the ability to continue to grow after confluence unlike the parental

cell line. This change in phenotype becomes even more exaggerated in those cell lines which are constitutively expressing antisense *wnt-5a* and *wnt-4* simultaneously.

These preliminary findings suggest the importance of the presence of *wnt-5a* and/or RNA transcripts in directing C57MG mammary epithelial cell phenotype and cell proliferation, and may be the underlying mechanism for how *wnt-1* is able to transform the cell phenotype. These results are consistent with the proposed hypothesis that *wnt-5a* and/or *wnt-4* control normal cell growth and provide a basis for continuing this line of research for understanding mammary cancer etiology. We have fulfilled the goals proposed for the first 12 months of the grant proposal by establishing all the stably transfected cell lines outlined in the proposal and now are characterizing these cell lines by various assays. We are currently or will be soon studying these cell lines with anchorage independent assays, 3H-thymidine incorporation, flow cytometry, and the use of nude mice, as described in the proposal.

Conclusions

The results indicate to date that *wnt-4* and *wnt-5a* gene expression is necessary for normal cell growth of C57MG mammary epithelial cells. This is an important finding since *wnt-4* and *wnt-5a* are differentially expressed in normal developing mouse mammary gland. Considering that *wnt-1* transgenic mice develop mammary gland hyperplasias and adenocarcinomas and *wnt-1* expressing C57MG cells transform, it becomes critical to understand the *wnt-1* mechanism of action. **One conclusion to draw from the results already published by this author and from the preliminary results derived from this proposal, is that it appears that *wnt-1* transforms cells by altering the normal expression of other *wnt*-gene family members, including *wnt-5a* and *wnt-4*.** It may be that whatever, *wnt*-gene family member predominates in a cell or collection of cells dictates the cell phenotype. This has important implications to determine *wnt*-gene expression in breast cancer. Interestingly, this proposal included ascertaining *wnt-5a* and *wnt-4* RNA levels in human breast cancer tissue and cell lines. Published studies have now shown that *wnt-5a* and *wnt-4* is minimally expressed, if at all, in human breast cancer cell lines (25, 26). Tissue from normal human breast when compared to benign breast tumors and malignant breast tumors for *wnt-5a* and *wnt-4* gene expression gives conflicting results, but generally follows the pattern that benign tissue *wnt-5a* and *wnt-4* expression is significantly increased while that for malignant tumors is decreased. The important point is that *wnt-5a* and *wnt-4* gene expression is altered depending on the state of cell growth.

We are planning to extend these results by searching for genes that may be transcriptionally regulated in the presence or absence of *wnt-1*, and *wnt-4* or *wnt-5a* using PCR-based RNA fingerprinting by differential display (27). This technique should provide for a systematic approach for uncovering *wnt*-mediated gene transcription. The cell lines already established in this proposal will be of particular use for minimizing false positives in searching for specific genes controlled by *wnt*-transcription.

References

1. Nusse, R and Varmus, H.E. Many tumors induced by the mouse mammary tumor virus contain a provirus integrated in the same region of the host genome. *Cell* **31**:99 (1982).
2. Nusse, R. et al., Mode of proviral activation of a putative mammary oncogene (int-1) on mouse chromosomal 15. *Nature* **307**:131 (1984).
3. Van Ooyen, A. and Nusse, R. Structure and nucleotide sequence of the putative mammary oncogene int-1: proviral insertions leave the protein-coding domain intact. *Cell* **39**:233 (1984).
4. Roelink, H., Wagenaar, E., and Nusse, R. Amplification and proviral activation of several *wnt*-genes during progression and clonal variation of mouse mammary tumors. *Oncogene* **7**:487 (1992).
5. Fung, Y.K., et al., Nucleotide sequence and expression in vitro of cDNA derived mRNA of *int-1*, a provirally activated mouse mammary oncogene. *Mol. Cell. Biol.* **5**, 3337-3344 (1985). (published erratum appears in *Mol. Cell. Biol.* **6**, 1362 (1986).
6. Brown, A.M.C. et al., Identification of protein products encoded by the proto-oncogene *int-1*. *Mol. Cell. Biol.* **7**, 3971-3977 (1987).
7. Nusse, R. and Varmus, H.E. *Wnt* genes. *Cell* **69**:1073 (1992).
8. Papkoff, J. Inducible overexpression and secretion of *int-1* protein. *Mol. Cell. Biol.* **9**, 3377-3384 (1989).
9. Papkoff, J. and Schryver, B. Secreted *int-1* protein is associated with the cell surface. *Mol. Cell. Biol.* **10**, 2723-2730 (1990).
10. Bradley, R.S. and Brown, A.M.C. The proto-oncogene *int-1* encodes a secreted protein associated with the extracellular matrix. *EMBO J.* **9**, 1569-1575 (1990).
11. Jue, S.F. et al., The mouse *wnt-1* gene can act via a paracrine mechanism in transformation of mammary epithelial cells. *Mol. Cell. Biol.* **12**, 321-328 (1992).
12. Christian, J.L., Olson, D.J., and Moon, R.T. *Xwnt-8* modifies the character of mesoderm induced by bFGF in isolated *Xenopus* ectoderm. *EMBO J.* **11**, 33-41 (1992).
13. Olson, D.J., Christian, J.L., and Moon, R.T. Effect of *wnt-1* and related proteins on gap junctional communication in *Xenopus* embryos. *Science* **252**, 1173-1176 (1991).
14. Olson, D.J. and Moon, R.T. Distinct effects of ectopic expression of *wnt-1*, activin B, and bFGF on gap junctional permeability in 32-cell *Xenopus* embryos. *Dev. Biol.* **151**, 204-212 (1992).
15. Moon, R.T., DeMarais, A., and Olson, D.J. Responses to *Wnt* signals in vertebrate embryos may involve changes in cell adhesion and cell movement. *J. Cell Science*, **Supplement 17**:183-188 (1993).

16. Hinck, L., Nelson, W.J., and Papkoff, J. *Wnt-1* modulates cell-cell adhesion in mammalian cells by stabilizing β -catenin binding to the cell adhesion protein cadherin. *J. Cell Biol.* **124**:729-741 (1994).
17. Tsukamoto, A.S. et al., Expression of the *int-1* gene in transgenic mice is associated with mammary gland hyperplasia and adenocarcinomas in male and female mice. *Cell* **55**, 619-625 (1988).
18. Vaidya, A.B. et al., Murine mammary tumor virus (MuMTV) infection of an epithelial cell-line established from C57BL/6 mouse mammary glands. *Virology* **90**, 12-22 (1978).
19. Gavin, B.J. and McMahon, A.P. Differential regulation of the *wnt* gene family during pregnancy and lactation suggests a role in postnatal development of the mammary gland. *Mol. Cell. Biol.* **12**, 2418-2423 (1992).
20. Buhler, T.A., Dale, T.C., Kieback, C., Humphreys, R.C., and Rosen, J.M. Localization and Quantification of *wnt-2* gene expression in mouse mammary development. *Dev. Biol.* **155**:87-96 (1993).
21. Olson, D.J. and Papkoff, J.P. Regulated expression of *wnt* family members during proliferation of C57MG mammary cells. *Cell Growth and Diff.* **5**:197-206 (1994).
22. Bargmann, C.I., Hung, M.-C., and Weinberg, R.A. The *neu* oncogene encodes an epidermal growth factor receptor-related protein. *Nature* **319**, 226-230 (1986).
23. Felgner, P.L. et al., Lipofection: a highly efficient lipid-mediated DNA transfection procedure. *PNAS* **84**:7413-7417 (1987).
24. Chomczynski, P. and Sacchi, N. Single-step method of RNA isolation by acid guanidinium thiocyanate-phenol-chloroform extraction. *Anal. Biochem.* **162**:156 (1987).
25. Lejeune, S., et al., *Wnt-5a* cloning, expression, and up-regulation in human primary breast cancers. *Clinical Cancer Research* **1**:215-222 (1995).
26. Huguet, E.L., et al., Differential expression of human *wnt* genes 2, 3, 4, and 7B in human breast cell lines and normal and disease states of human breast tissue. *Cancer Research* **54**:2615-2621 (1994).
27. Liang, P and Pardee, A.B. Differential display of eukaryotic mRNA by means of the polymerase chain reaction. *Science* **257**:967-971.

Appendices

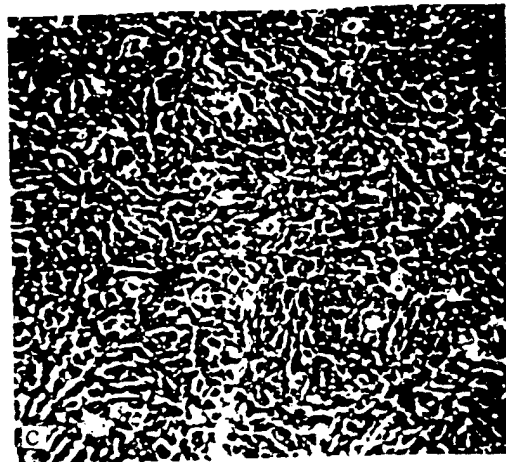
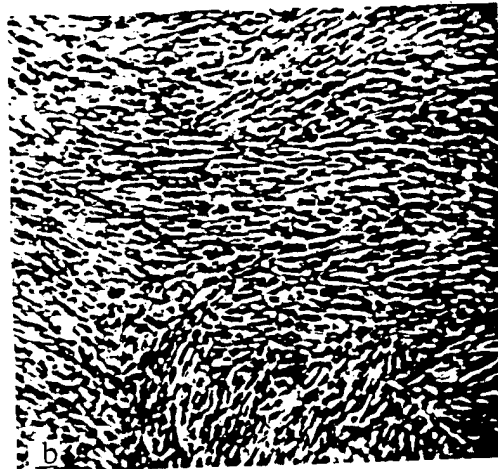
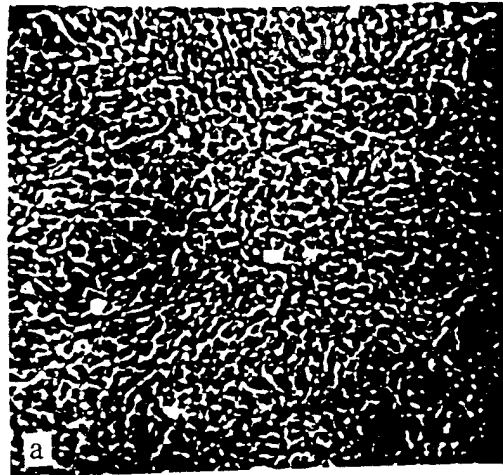


Fig 1. Photomicrographs of a morphology assay showing C57MG mammary epithelial cells at confluence which compare (a) normal parental cells with (b) *wnt-1* expressing cells and with (c) *wnt-1* expressing that have been co-transfected with *wnt-4* in the sense orientation.

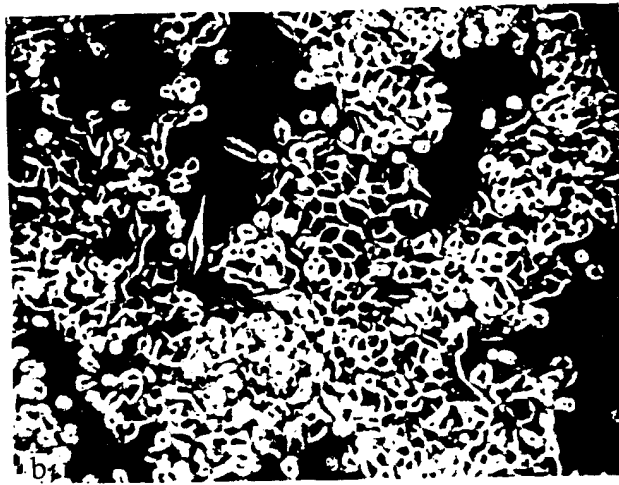
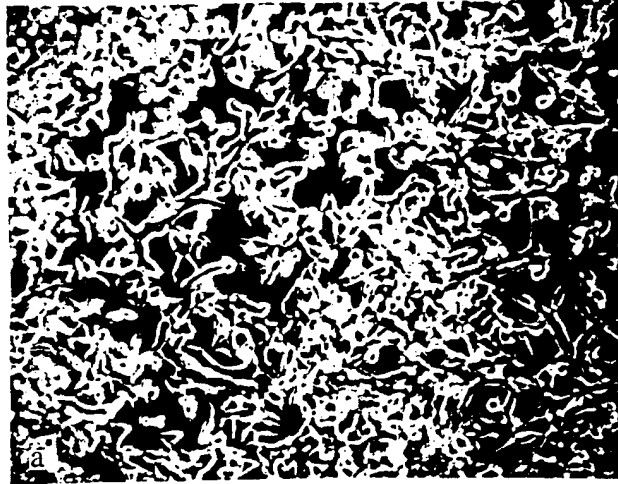


Fig. 2 Photomicrographs of C57MG mammary epithelial cells which compare (a) cells which are expressing rat *neu T* and are fully transformed to (b) cells which are expressing rat *neuT*, and are co-transfected with *wnt-5a* and *wnt-4* in the sense orientation.

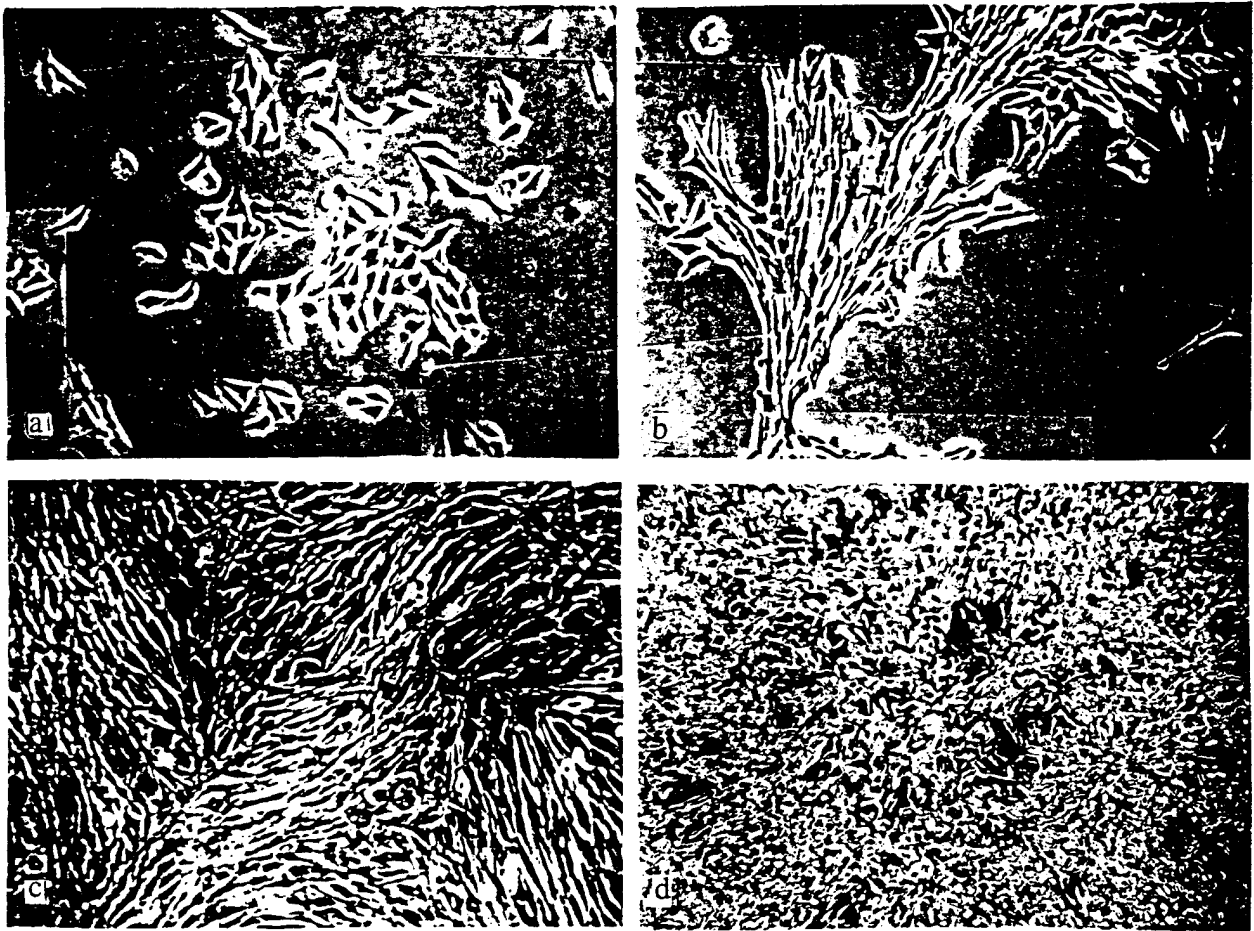


Fig 3. Photomicrographs of C57MG mammary epithelial cells which compare (a) normal parental cells at subconfluence to (b) cells which have been transfected with *wnt-5a* in the antisense orientation and to (c) cells transfected with antisense *wnt-5a* at confluence. Compare (c) with Fig 1 (a). The photomicrograph represented in (d) are cells at confluence which have been transfected with both *wnt-5a* and *wnt-4* in the antisense orientation, which can be compared to Fig 2 (a).