

Naval Medical Research Institute

8901 Wisconsin Avenue
Bethesda, MD 20889-5607

NMRI 95-83

December 1995



MULTIPLE GENE BLOTTING TO SCREEN FOR CYTOKINE RNA EXPRESSION APPLICATION TO ENDOTHELIUM CELLS

H. Chang
Y-Y. Li
P. D. Siebert
F. M. Rollwagen
T. B. Nielsen

Naval Medical Research
and Development Command
Bethesda, Maryland 20889-5606

Department of the Navy
Naval Medical Command
Washington, DC 20372-5210

Approved for public release;
distribution is unlimited

19960213 011

NOTICES

The opinions and assertions contained herein are the private ones of the writer and are not to be construed as official or reflecting the views of the naval service at large.

When U. S. Government drawings, specifications, or other data are used for any purpose other than a definitely related Government procurement operation, the Government thereby incurs no responsibility nor any obligation whatsoever, and the fact that the Government may have formulated, furnished or in any way supplied the said drawings, specifications, or other data is not to be regarded by implication or otherwise, as in any manner licensing the holder or any other person or corporation, or conveying any rights or permission to manufacture, use, or sell any patented invention that may in any way be related thereto.

Please do not request copies of this report from the Naval Medical Research Institute. Additional copies may be purchased from:

Office of the Under Secretary of Defense (Acquisition & Technology)
Defense Technical Information Center
8725 John J. Kingman Road, Suite 0944
Ft. Belvoir, VA 22060-6218

Federal Government agencies and their contractors registered with the Defense Technical Information Center should direct requests for copies of this report to:

TECHNICAL REVIEW AND APPROVAL

NMRI 95-83

The experiments reported herein were conducted according to the principles set forth in the current edition of the "Guide for the Care and Use of Laboratory Animals," Institute of Laboratory Animal Resources, National Research Council.

This technical report has been reviewed by the NMRI scientific and public affairs staff and is approved for publication. It is releasable to the National Technical Information Service where it will be available to the general public, including foreign nations.

THOMAS J. CONTRERAS
CAPT, MSC, USN
Commanding Officer
Naval Medical Research Institute

REPORT DOCUMENTATION PAGE			Form Approved OMB No. 0704-0188	
Public reporting burden for this collection of information is estimated to average 1 hour per response, including the time for reviewing instructions, searching existing data sources, gathering and maintaining the data needed, and completing and reviewing the collection of information. Send comments regarding this burden estimate or any other aspect of this collection of information, including suggestions for reducing this burden, to Washington Headquarters Services, Directorate for Information Operations and Reports, 1215 Jefferson Davis Highway, Suite 1204, Arlington, VA 22202-4302, and to the Office of Management and Budget, Paperwork Reduction Project (0704-0188), Washington, DC 20503.				
1. AGENCY USE ONLY (Leave blank)	2. REPORT DATE December 1995	3. REPORT TYPE AND DATES COVERED Technical Report 1992-1994		
4. TITLE AND SUBTITLE Multiple Gene Blotting to Screen for Cytokine RNA Expression: Application to Endothelioma Cells		5. FUNDING NUMBERS PE - 61153N 62233N PR - MR04120 MM33C30 TA - 00F 001 WU - 1203 1107		
6. AUTHOR(S) H. Chang, Y-Y Li, P. D. Siebert, F. M., Rollwagen, T. B. Nielsen		8. PERFORMING ORGANIZATION REPORT NUMBER NMRI 95-83		
7. PERFORMING ORGANIZATION NAME(S) AND ADDRESS(ES) Naval Medical Research Institute Commanding Officer 8901 Wisconsin Avenue Bethesda, Maryland 20889-5607		10. SPONSORING / MONITORING AGENCY REPORT NUMBER		
9. SPONSORING / MONITORING AGENCY NAME(S) AND ADDRESS(ES) Naval Medical Research and Development Command National Naval Medical Center Building 1, Tower 12 8901 Wisconsin Avenue Bethesda, Maryland 20889-5606		11. SUPPLEMENTARY NOTES		
12a. DISTRIBUTION / AVAILABILITY STATEMENT Approved for public release; distribution is unlimited.		12b. DISTRIBUTION CODE		
13. ABSTRACT (Maximum 200 words) BACKGROUND: Because normal and tumor cells can secrete different cytokines, it has been a matter of educated guesswork to select which factors to study. Nevertheless, many can be missed, so we have developed a method to screen for unanticipated cytokine expression. EXPERIMENTAL DESIGN: Amplification products from polymerase chain reactions (PCR) of different cytokine genes were spotted onto nylon membranes, and probed with radioactive cDNAs made from mouse endothelioma cells. RESULTS: The presence of interleukin-3 was detected, and confirmed by conventional Northern blotting and polymerase chain reaction (PCR). CONCLUSIONS: This method may be useful to survey cells for the expression of cytokine genes.				
14. SUBJECT TERMS Assay, blot, cytokine, expression, screening		15. NUMBER OF PAGES		16. PRICE CODE
17. SECURITY CLASSIFICATION OF REPORT Unclassified	18. SECURITY CLASSIFICATION OF THIS PAGE Unclassified	19. SECURITY CLASSIFICATION OF ABSTRACT Unclassified	20. LIMITATION OF ABSTRACT Unlimited	

**Multiple Gene Blotting to Screen for Cytokine RNA Expression:
Application to Endothelioma Cells**

Henry Chang, M.D.^{1,4}, Ying-yue Li, M.D.², Paul D. Siebert, Ph.D.³, Florence M. Rollwagen,
Ph.D.¹, Thor B. Nielsen, Ph.D.¹

¹Wound Repair Enhancement Program

Naval Medical Research Institute, Code 63, Bethesda, MD 20889-5607

²Geo-Centers, Inc., Ft. Washington, MD 20744

³Clontech Laboratories, Inc.

4030 Fabian Way, Palo Alto, CA 94303

⁴Corresponding author (address given above)

Running title: Multiple cytokine blotting

The assertions contained herein are not to be construed as official, or as the views of the Navy,
the Department of Defense, or the U.S. Government. This work was funded by NMRDC DD1498
Nos. 61153N.MR04120.OOF.1203 and 62233N.MM33C30.001-1107.

Abstract

BACKGROUND: Because normal and tumor cells can secrete different cytokines, it has been a matter of educated guesswork to select which factors to study. Nevertheless, many can be missed, so we have developed a method to screen for unanticipated cytokine expression.

EXPERIMENTAL DESIGN: Amplification products from polymerase chain reactions (PCR) of different cytokine genes were spotted onto nylon membranes, and probed with radioactive cDNAs made from mouse endothelioma cells. **RESULTS:** The presence of interleukin-3 was detected, and confirmed by conventional Northern blotting and polymerase chain reaction (PCR).

CONCLUSIONS: This method may be useful to survey cells for the expression of cytokine genes.

Keywords: Assay/blot/cytokine/expression/screening

Introduction

A formidable problem in the study of cytokines is the determination of factors produced by single or different types of cells. Many cytokines have been described, each interacting with others. Since there are multiple species, where does one start to look? Currently, many investigators make an educated guess, and test for certain cytokines individually. This is not only a laborious process, but has the disadvantage of potentially missing important cytokines.

To address this problem, we have developed an approach to screen for multiple cytokines using a single mRNA extract from cells or tissues. In this method, polymerase chain reaction (PCR) products from multiple cytokine genes are spotted onto nylon membranes, and probed with labeled cDNA made from total mRNA extracted from the cells of interest. As a model, we screened a mouse endothelioma (EOMA) cell line (1) for unknown cytokine gene expression, and were surprised to detect the presence of large quantities of interleukin-3 (IL-3) mRNA. This result was confirmed by standard Northern blot and PCR.

Experimental Design and Methods

Conditioned medium was prepared from 5×10^6 /ml rat spleen cells incubated with $5 \mu\text{g}/\text{ml}$ concanavalin A (Sigma Chemical, St. Louis, MO) in RPMI-1640 medium plus 20mM HEPES, 1mM sodium pyruvate, 100U penicillin and 100ug streptomycin. After 48 hours at 37°C , the supernatant (CAS) was collected (5). This fluid typically contains about 250U/ml interleukin-2, 12U/ml interleukin-6, 6,000U/ml tumor necrosis factor, and some interleukin-5 and interferon- γ , but no detectable interleukin-1 or macrophage colony stimulating factor (6).

A final volume of 10% of this conditioned medium was added to a mouse endothelioma (EOMA) cell line (strain 129, H-2b) obtained from Robert Auerbach (1), to induce cytokine

production. After 2 hours, their RNA was prepared with RNA STAT-60 (TEL-TEST "B", Inc. Friendswood, TX) (7). Mixed cDNA probes were made with a SuperScript kit (GIBCO/BRL, Gaithersburg, MD) with 5-10 μ g RNA, 25ng random hexamers, and α -³²P-dATP (3000 Ci/mmol, Dupont NEN, Boston, MA) substituted for non-radioactive dATP (8).

To make the multiple cytokine blots, polymerase chain reaction (PCR) was performed on multiple human cytokine genes with AmplimersTM and conditions from Clontech (Palo Alto, CA). The PCR products were equalized visually by band intensity on agarose gel electrophoresis, and about 100ng was applied to each spot on a positively-charged nylon membrane (Nytran, Schleicher and Schuell, Keene, NH). The DNA was fixed to the membranes by ultraviolet light (Stratalinker, Stratagene, La Jolla, CA). The radioactive probes were hybridized to these blots at 42°C overnight and washed at 57°C by standard methods (9). The blots were exposed to Kodak XAR film with an intensifying screen at -70°C.

To confirm detection, EOMA RNA (15 μ g/lane) was electrophoresed in a 1% agarose-formaldehyde gel (9), and transferred to a nylon membrane (Hybond-N, Amersham, Arlington Heights, IL). The blot was baked, and probed with a radioactive PCR product for mouse interleukin-3 and a mouse housekeeping gene, glyceraldehyde-3-phosphate dehydrogenase (G-3-PDH) (9) at 42°C. The blots were washed and autoradiographed as above.

For cytokine confirmation by PCR, 4 μ g EOMA RNA was primed with 25ng oligo-dT in the SuperScript kit to make cDNA. Then 5' and 3' Clontech amplimers for mouse IL-3 and G-3-PDH, at final concentrations of 0.4 μ M each, were used for 100 μ l PCRs on a thermal cycler (MJ Research, Watertown, MA). The mixtures were heated at 95°C for 2 min., followed by 95°C for 40 sec., 55°C for 1 min., 72°C for 1 min. for 35 cycles, and finally incubated at 75°C for 10 min.

Aliquots were electrophoresed on agarose gels, stained with ethidium bromide, and the bands were photographed under ultraviolet light.

Results

We were interested in the mouse endothelioma cell line as a model for angiogenesis, but it had been poorly characterized for cytokine production. Therefore, PCR was used to prepare human DNA fragments from different cytokines, which then were spotted on a nylon membrane as shown in Fig. 1a (left panel). When probed with radioactive EOMA cDNA, the blot showed that, of the seven interleukin genes surveyed, only IL-3 was detected in substantial amounts (Fig. 1a, right panel). The presence of this mRNA was confirmed by Northern blot (Fig. 1b) and PCR (Fig. 1c). Because the latter is a sensitive technique, an IL-3 band also was found in unstimulated cells. However, a Western blot revealed a greater amount of IL-3 protein after stimulation with CAS (data not shown).

Discussion

This endothelioma cell line exemplifies a daunting problem, namely, since there are many cytokines, where does one start to look? We report here success in the use of a single extract of mRNA to screen for expression of multiple cytokine genes. We detected the presence of IL-3, which was unexpected, because human endothelial cells, stimulated with phytohemagglutinin and phorbol esters, do not express this cytokine (2). One of us (T.B.N.) had found previously that endothelial cells can support the growth of hematopoietic stem cells cultured with granulocyte-macrophage colony stimulating factor (3). Small amounts of IL-3 could be synergistic.

During our studies, a similar method for analysis of gene expression patterns was published (4). These workers spotted plasmid DNA on slot blots and detected c-myc, PCNA, and GAPDH

expressed by cardiac fibroblasts. Although their method may be slightly more sensitive because of larger plasmid targets (see below), our variation may be easier, since PCR fragments can be obtained directly from genes without cloning or multiple plasmid preparations.

In related experiments (by Y.Y.L. and F.M.R.), another cytokine also was detected, but did not show up on the multiple cytokine blots. Several explanations are possible. The PCR fragments that were used to make the blots were from human genes, and there could have been less nucleotide homology between other mouse cytokine sequences and human ones. A second possibility is that this screening procedure picks up only highly expressed messages, because the presence of the mouse housekeeping gene was not detected either. Finally, other mRNAs may not be produced in quantity at this time point of stimulation.

This method also could be used to follow the time course of expression for various cytokines, but some caveats should be kept in mind. Several factors limit the quantifiability of the detection system. The first is the unequal size of the inserts or PCR fragments between cytokines, which may vary by a few hundred nucleotides and lead to different amounts of DNA bound to each spot. The second is the variation in cDNA probe sizes, due to inherent disparities in mRNA length as well as variable efficiencies of cDNA synthesis. The longer or isotopically rich probes would give a higher signal. Thus interpretations should be made with care. Despite these uncertainties, it should be possible to increase the sensitivity of the assay. The challenge will be to amplify the signal of the cDNA probes without alteration of the relative ratios of the cytokine mRNAs.

In summary, we have developed a rapid screening system for cytokine gene expression. Our results indicate that the availability of multiple cytokine blots should be extremely useful to the scientific community.

Acknowledgements

We thank Dr. Robert Auerbach for the gift of the EOMA cells.

References

1. Obeso J, Weber J, Auerbach R (1990) Methods in Laboratory Investigation. A hemangioendothelioma-derived cell line: its use as a model for the study of endothelial cell biology. *Lab. Invest.* 63:259-269.
2. Niemeyer CM, Sieff CA, Mathey-Prevot B, Wimperis JZ, Bierer BE, Clark SC, Nathan DG (1989) Expression of human interleukin-3 is restricted to human lymphocytes and T-cell tumor lines. *Blood.* 73:945-951.
3. Monroy RL, Davis TA, Nielsen TB, Staton AJ (1992) Peripheral blood hematopoietic progenitor/stem cells proliferate to form colonies in liquid culture, but require contact with vascular endothelial cells and GM-CSF. *Internat. J. Cloning* 10:105-115.
4. Chalifour LE, Fahmy R, Holder EL, Hutchinson EW, Osterlund CK, Schipper HM, Wang E (1994) A method for analysis of gene expression patterns. *Anal. Biochem.* 216:299-304.
5. Watson J, Aarden LA, Lefkovits I (1979) The purification and quantitation of helper T cell-replacing factors secreted by murine spleen cells activated by concanavalin A. *J. Immunol.* 122:209-15.
6. Rollwagen FM, Pacheco ND, Baqar S (1993) An improved model for the examination of biological effects of locally administered cytokines. *J. Immunol. Meth.* 166:223-232.
7. Chomczynski P, Sacchi N (1987) Single-step method of RNA isolation by acid guanidinium thiocyanate-phenol-chloroform extraction. *Anal. Biochem.* 162:156-159.
8. Schowalter DB, Sommer SS (1989) The generation of radiolabeled DNA and RNA probes

with polymerase chain reaction. Anal. Biochem. 177:90-4.

9. Sambrook J, Fritsch EF, Maniatis T (1989) Northern Hybridization. In Molecular Cloning, a Laboratory Manual, 2nd Ed., Cold Spring Harbor Laboratory Press, Cold Spring Harbor, N.Y., pp. 7.39-7.52.

Legends

Fig. 1a: (Left panel) Grid for multiple cytokine blot. (Right panel) Autoradiograph after hybridization with ³²P-labeled cDNA from EOMA cells stimulated with concanavalin A supernatant (CAS).

Fig. 1b: Northern blots of EOMA RNA before (left lane) and after (right lane) stimulation with CAS. The probes were IL-3 (above), and G-3-PDH (below).

Fig. 1c: PCR with IL-3 primers and EOMA RNA. (L to R) Lane 1: unstimulated cells, Lane 2: stimulated with CAS, Lane 3: control IL-3 cDNA, Lane 4: control G-3-PDH.

a

GPDH	IL-1a	IL-1b
IL-3	IL-4	IL-5
IL-6	IL-11	

b

● - IL-3

● ● - G-3-PDH

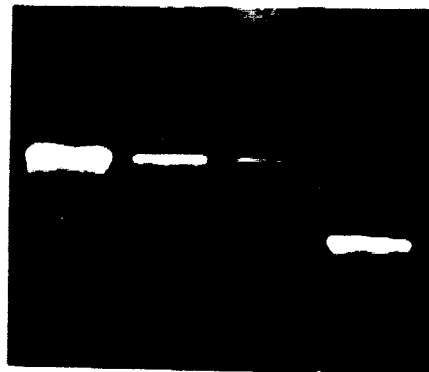


Fig 1a-c