

ARMY RESEARCH LABORATORY



The MAVEN Approximation Method Within the MUVES Environment

Mark D. Burdeshaw

ARL-TR-787

July 1995

APPROVED FOR PUBLIC RELEASE; DISTRIBUTION IS UNLIMITED.

19960222 033

DTIC QUALITY INSPECTED 1

NOTICES

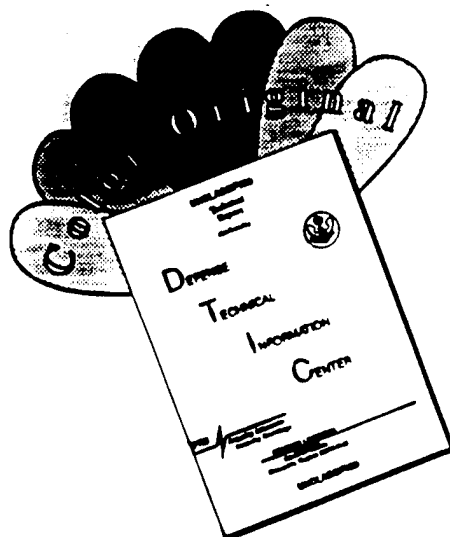
Destroy this report when it is no longer needed. DO NOT return it to the originator.

Additional copies of this report may be obtained from the National Technical Information Service, U.S. Department of Commerce, 5285 Port Royal Road, Springfield, VA 22161.

The findings of this report are not to be construed as an official Department of the Army position, unless so designated by other authorized documents.

The use of trade names or manufacturers' names in this report does not constitute indorsement of any commercial product.

DISCLAIMER NOTICE



THIS DOCUMENT IS BEST QUALITY AVAILABLE. THE COPY FURNISHED TO DTIC CONTAINED A SIGNIFICANT NUMBER OF COLOR PAGES WHICH DO NOT REPRODUCE LEGIBLY ON BLACK AND WHITE MICROFICHE.

REPORT DOCUMENTATION PAGE			Form Approved OMB No. 0704-0188	
Public reporting burden for this collection of information is estimated to average 1 hour per response, including the time for reviewing instructions, searching existing data sources, gathering and maintaining the data needed, and completing and reviewing the collection of information. Send comments regarding this burden estimate or any other aspect of this collection of information, including suggestions for reducing this burden, to Washington Headquarters Services, Directorate for Information Operations and Reports, 1215 Jefferson Davis Highway, Suite 1204, Arlington, VA 22202-4302, and to the Office of Management and Budget, Paperwork Reduction Project(0704-0188), Washington, DC 20503.				
1. AGENCY USE ONLY (Leave blank)	2. REPORT DATE July 1995	3. REPORT TYPE AND DATES COVERED Final, Jan 94-May 95		
4. TITLE AND SUBTITLE The MAVEN Approximation Method Within the MUVES Environment			5. FUNDING NUMBERS PR: 1L162618AH80	
6. AUTHOR(S) Mark D. Burdeshaw				
7. PERFORMING ORGANIZATION NAME(S) AND ADDRESS(ES) U.S. Army Research Laboratory ATTN: AMSRL-SL-BA Aberdeen Proving Ground, MD 21005-5068			8. PERFORMING ORGANIZATION REPORT NUMBER ARL-TR-787	
9. SPONSORING/MONITORING AGENCY NAMES(S) AND ADDRESS(ES)			10. SPONSORING/MONITORING AGENCY REPORT NUMBER	
11. SUPPLEMENTARY NOTES				
12a. DISTRIBUTION/AVAILABILITY STATEMENT Approved for public release; distribution is approved.			12b. DISTRIBUTION CODE	
13. ABSTRACT (Maximum 200 words) The Modular Air-System Vulnerability Estimation Network (MAVEN) is a stochastic, pointburst model for all classes of air targets to include fixed- and rotary-wing aircraft and missiles. MAVEN is an approximation method under the Modular UNIX-based Vulnerability Estimation Suite (MUVES) and follows the Ballistic Vulnerability/Lethality Division (BVLVD) Vulnerability/Lethality (V/L) process structure. MAVEN is intended to be used during all phases of the acquisition life cycle, from research and development through test and evaluation and fielding. The purpose of this report is to describe the initial version of MAVEN which models armor-piercing (AP) and armor-piercing incendiary (API) munitions.				
14. SUBJECT TERMS vulnerability, methodology, lethality, air system			15. NUMBER OF PAGES 29	
			16. PRICE CODE	
17. SECURITY CLASSIFICATION OF REPORT UNCLASSIFIED	18. SECURITY CLASSIFICATION OF THIS PAGE UNCLASSIFIED	19. SECURITY CLASSIFICATION OF ABSTRACT UNCLASSIFIED	20. LIMITATION OF ABSTRACT UL	

INTENTIONALLY LEFT BLANK

ACKNOWLEDGMENTS

The author would like to acknowledge the contributions of Dr. James N. Walbert, who first envisioned a new air system vulnerability/lethality model, and Mrs. Lisa K. Roach, Ballistic Vulnerability/Lethality Division (BVLD), U.S. Army Research Laboratory (ARL), and thank them for their technical guidance, leadership, and contributions during the MAVEN development effort.

Thanks are also extended to Mrs. Roach (again), and Mr. William Merma-
gen, Jr., BVLD, ARL, Ms. Lisa Garriques, SURVICE Engineering Company,
and Mr. Eric Edwards, LB&B Incorporated, for their technical and editorial
reviews of the draft report and insightful comments that improved this docu-
ment.

INTENTIONALLY LEFT BLANK

Table of Contents

	<u>Page</u>
Acknowledgements.....	iii
List of Figures.....	vii
1. Introduction.....	1
2. Overview.....	1
2.1 Vulnerability/Lethality Process Structure.....	1
2.2 The Modular UNIX-Based Vulnerability Estimation Suite (MUVES).....	3
2.3 Consolidation of Models Under MUVES.....	5
2.4 MUVES Terminology.....	5
3. Armor-Piercing (AP) and Armor-Piercing Incendiary (API) Modeling.....	6
3.1 The Abstraction.....	6
3.2 The Representation.....	7
3.2.1 Threat Information.....	7
3.2.2 Target Information.....	8
3.2.3 O _{1,2} Mapping.....	9
3.2.4 O _{2,3} Mapping.....	11
3.2.4.1 System Definition File.....	12
3.2.4.2 States File.....	12
3.2.4.3 Damage Evaluation Selection (DES) File.....	13
3.3 The Implementation.....	13
3.3.1 Additions to the Physical Interaction (Pi) Package.....	14
3.3.2 Additions to the Threat (Th) Package.....	15
3.3.3 Additions to the System Evaluation (Se) Package.....	15
3.3.4 The Method-Specific (MAVEN) Directory.....	16
3.3.5 Verification of MAVEN.....	16
4. Future Development Efforts.....	16
4.1 High-Explosive (HE) and High-Explosive Incendiary (HEI) Modeling.....	16
4.2 Multiple Fragments.....	17
4.3 Dry Bay Fire Modeling.....	17
4.4 Hit-to-Kill.....	17
5. Conclusion.....	17
6. References.....	19
Distribution List.....	21

INTENTIONALLY LEFT BLANK

List of Figures

	<u>Page</u>
V/L process structure.	2
MUVES environment.....	4
MUVES top-level diagram.....	4
Projectile design.	7
Initial threat file.	8
MUVES vulnerability computation for one shotline.	10
Principal computations for AP and API projectiles.	11
Series, parallel, and combination fault trees.	12
System definitions for series, parallel, and combination fault trees.....	13
States file.	14
Damage evaluation selection file.....	15
JTCG/ME penetration modules in MUVES.....	15

INTENTIONALLY LEFT BLANK

1. Introduction

The Modular Air-system Vulnerability Estimation Network (MAVEN) is a stochastic, point-burst model for all classes of air targets to include fixed- and rotary-wing aircraft and missiles. MAVEN is an approximation method under the Modular UNIX¹-based Vulnerability Estimation Suite (MUVES) (Hanes et al. 1991 and Murray, Moss, and Coates 1994) and follows the Ballistic Vulnerability/Lethality Division (BVLD) vulnerability/lethality (V/L) process structure (see section 2.1 for a full description).

MAVEN is intended to be used during all phases of the acquisition life cycle, from research and development through test and evaluation and fielding (Roach 1994). The MAVEN project began in 1993 as an internal BVLD development project and may become the basis for the Advanced Joint Effectiveness Model (AJEM), a new air-system V/L model being jointly developed by the Joint Technical Coordinating Group for Munitions Effectiveness (JTCG/ME), and the Joint Technical Coordinating Group on Aircraft Survivability (JTCG/AS).

The purpose of this report is to describe the initial version of MAVEN which models armor-piercing (AP) and armor-piercing incendiary (API) munitions. The penetration algorithms for this class of threat are based on the JTCG/ME Penetration Equations Handbook for Kinetic Energy Penetrators (JTCG/ME 1985). Before MAVEN is discussed, some background material is presented on the V/L process structure and MUVES.

2. Overview

2.1 Vulnerability/Lethality Process Structure

The BVLD V/L process structure is a mathematical and conceptual framework for thinking about V/L problems (Deitz and Ozolins 1989; Kloplic, Starks, and Walbert 1992; Walbert, Roach, and Burdeshaw 1993). This framework, also called the V/L taxonomy, can be thought of as a series of distinct levels of information through which analyses pass, as shown in Figure 1, and mappings between those levels. For a formal mathematical explanation of the V/L taxonomy, see the report by Walbert (1994). Level 0 is not formally part of the V/L taxonomy but is shown here for illustrative purposes only. The V/L part of the problem traditionally starts at Level 1.

1. UNIX is a registered trademark of AT&T.

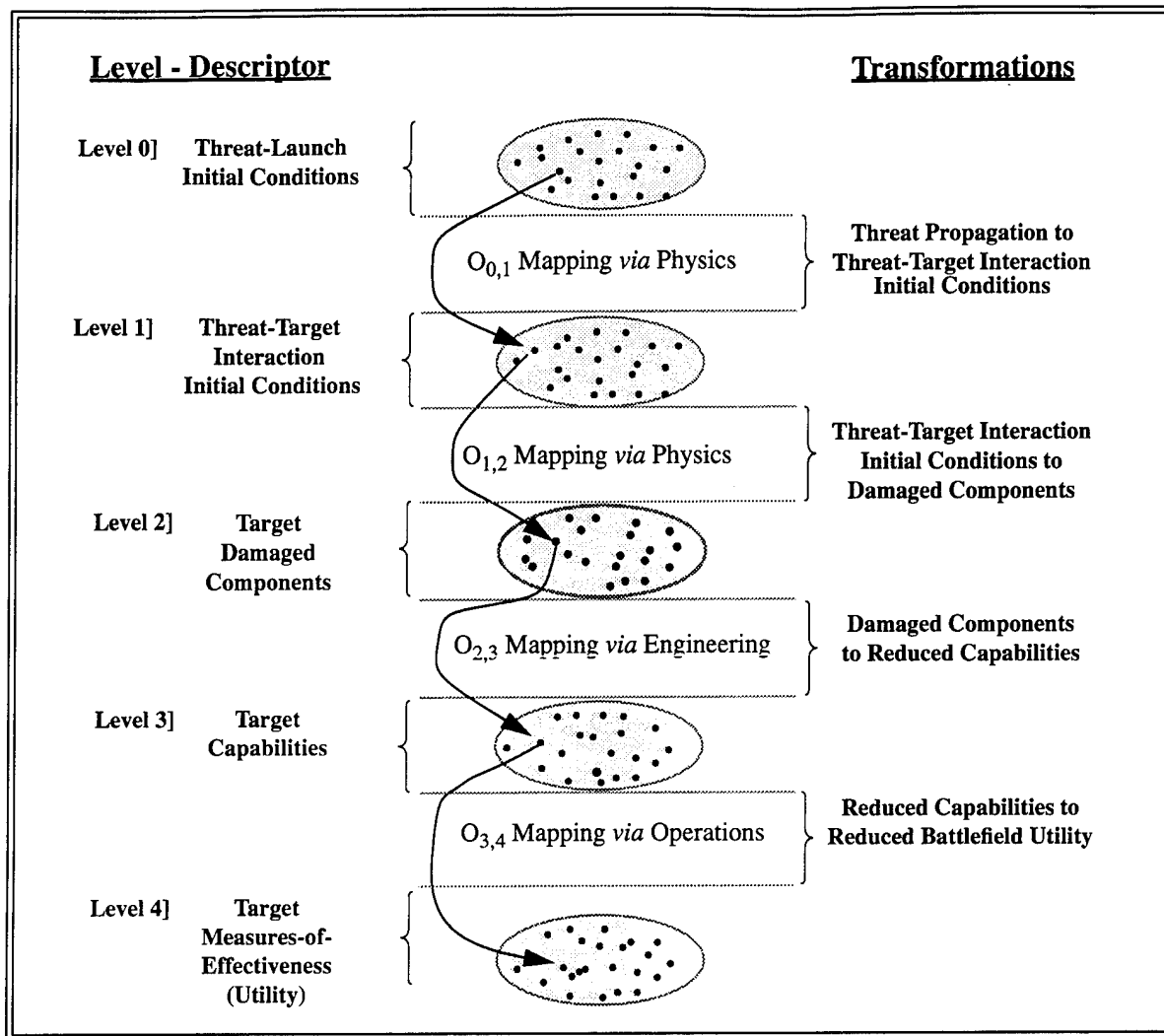


FIGURE 1. V/L process structure.

Level 1 represents all possible combinations of target-threat interaction initial conditions. Each point in the space represents a unique combination of these initial conditions. Fundamentally, the mapping from Level 1 to Level 2 ($O_{1,2}$) deals with physics such as penetration algorithms, fracture mechanics, etc. The result of this mapping is a list of damaged components. Level 2 represents the set of all possible combinations of damaged components, each combination represented by a point in the space. The mapping from Level 2 to Level 3 ($O_{2,3}$) primarily involves engineering with the result being a set of target residual capabilities. Each point in level 3 represents a unique combination of capabilities. These residual capabilities will have different effects on the target's combat utility depending on the mission and scenario and are determined via the $O_{3,4}$ mapping. The target's combat utility can be found by various operations research techniques such as force-on-force models and com-

bat simulations. Most importantly, at all levels, the results will be measurable and/or observable.

2.2 The Modular UNIX-Based Vulnerability Estimation Suite (MUVES)

Simulation models have been used in BVLD for performing V/L studies for over 30 years. These models have changed continuously as methodologies and algorithms have been developed or enhanced. These codes evolved individually and created a substantial support burden and configuration control problem. In 1985, BVLD initiated the MUVES project. Some goals of this project are:

- Use Ballistic Research Laboratory²-Computer Aided Design (BRL-CAD) Multi-device Graphics Editor (MGED) (Muuss 1991a) and ray-tracing libraries for solid modeling and target interrogation (Muuss 1991b)
- Minimize code redundancy
- Control code design and maintenance
- Facilitate extension of the production code for:
 - New situations
 - New analysis methods
 - Experimental applications
- Provide a modeling environment for developing new approximation methods.

MUVES can be thought of as a modeling environment within which approximation methods are developed and implemented (see Figure 2). An approximation method is roughly equivalent to what was considered a stand-alone model before MUVES. For example, it contains the collection of mathematical models and equations, assumptions, simplifications, and empirical data used to represent the physical process of the threat interacting with the target.

Figure 3 shows the top-level flow diagram for MUVES. There are three main parts of MUVES: the user interface, the vulnerability estimator, and the ray-tracer. The only part with which the analyst interacts directly is the user interface. Through this interface, the analyst can specify the parameters for a run and/or may perform file or project management functions. When setting up a run, the parameters for that run are stored in a file called a session file. This session file is stored as part of the audit trail of the analysis.

2. On 30 September 1992, the U.S. Army Ballistic Research Laboratory (BRL) was deactivated and subsequently became part of the U.S. Army Research Laboratory (ARL) on 1 October 1992.

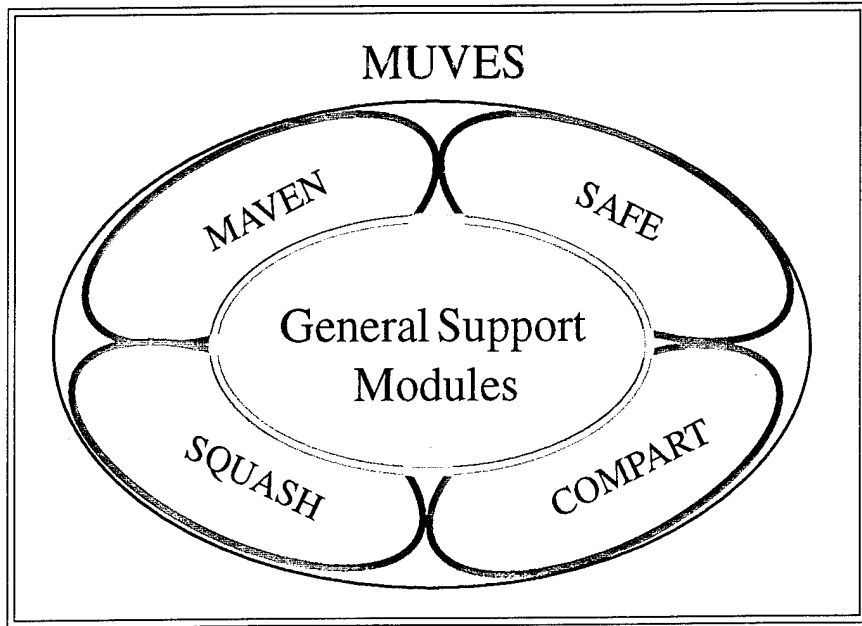


FIGURE 2. MUVES environment.

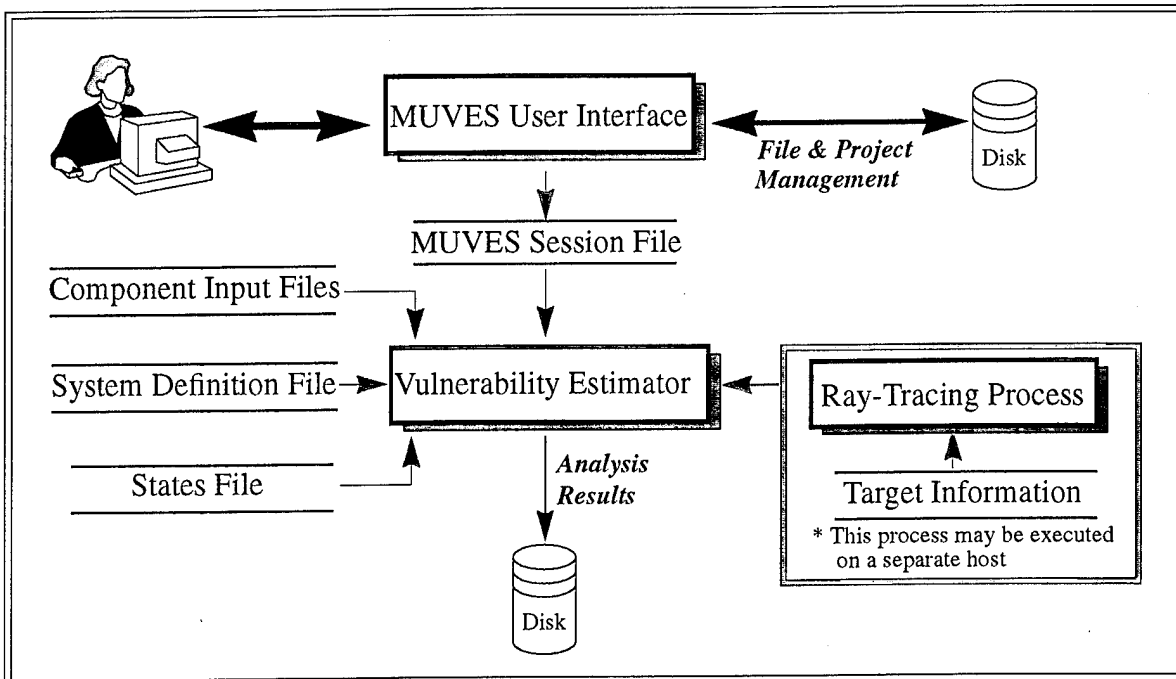


FIGURE 3. MUVES top-level diagram.

The session file is then used as input to the vulnerability estimator. Once this analysis is started, the analyst may then return to preparing inputs, through the user interface, for subsequent runs. The vulnerability estimator initiates a separate ray-tracing process to get the ray-trace information. The ray-tracing process may be run on the same machine as the user interface and the vulnerability estimator or on a separate host. This

allows the most compute-intensive part of the analysis to be run on a bigger, more powerful machine.

2.3 Consolidation of Models Under MUVES

There is currently a division-wide effort to consolidate all BVLD V/L models under the MUVES environment. This includes models for ground and air targets, and direct and indirect fire weapon systems. Likewise, MAVEN may ultimately replace a variety of air-system V/L models, such as the Computation Of Vulnerable Areas and Repair Times (COVART) (JTTCG/ME Undated), which is used for AP munitions and single fragments. Others modules which eventually will be included are for blast and fragment munitions, potentially replacing the Personal Computer Assisted Vulnerability Assessment Methodology (PCAVAM) (Mayerhoffer and Douglass 1989), HEVART (Burk et al. 1987), and HEIVAM (ASI Systems Int. 1988).

The hit-to-kill modules in MAVEN will supplement PEELS and the LEGS family of codes (MLEGS, RLEGS, etc.) making use of the Tate cratering model (Frank and Zook 1991).

2.4 MUVES Terminology

In order to make clearer the description of AP and API modeling in section 3, some common MUVES terms are defined here. This section is a subset of the glossary in the MUVES Analyst's Guide.

- ***component trace*** - A component trace is the geometric information calculated for a single component during the course of a ray-trace through the target. Depending on the needs of the approximation method, it may contain entry and exit points, normal vectors, and curvature information.
- ***damage packet*** - A data structure which defines the type of damage done to a component and contains any parameters needed to describe the degree of damage (e.g., number of impacting fragments, hole diameter, deposited energy, etc.). Note that this data structure contains only the physical parameters of the damage and contains no information about the effects of the damage on the component's functionality.
- ***evaluation module (EM)*** - This is a module written by the approximation method developer to compute the functionality of a component based on the damage to that component during its interaction(s) with the threat(s).
- ***initial threat path*** - An initial threat path is a list of component traces from a ray-traced path through a target plus the parameters for the threat impacting the first component (before any interactions have occurred).

- ***interaction module (IM)*** - This is a module written by the approximation method developer to perform the calculations involved in the interaction of a single component with a threat. MUVES selects these functions based on the approximation method, the component category, and the threat type.
- ***ray-trace*** - Simulating the path of a projectile through a target. Used to ascertain the geometric information (line-of-sight and normal thickness, impactor/target obliquity) which is necessary for the penetration calculations.
- ***threat path*** - A list of component traces from a ray-traced path through a target, plus the parameters for a threat propagating along that path. This information is required to propagate a threat through a series of IMs in order to compute the damage to the target as a result of threat/component interactions; the subsequent components in a threat path may also change as a result of the interactions.

3. Armor-Piercing (AP) and Armor-Piercing Incendiary (API) Modeling

In this section, the abstraction-representation-implementation paradigm is used to describe the model for AP and API munitions (Barzel 1992). The abstraction is the set of key or salient ideas that capture the essence of the model. It is not necessarily mathematically precise. The representation is the formalization of the abstraction (mathematical model). It can be edited, copied, analyzed, debated, etc. The representation consists of two parts: the $O_{1,2}$ mapping and the $O_{2,3}$ mapping; these two parts are discussed in separate sections. The implementation expands or carries out the representation in some fashion. For MAVEN, it is the creation of the computer software that will be used by the analyst.

3.1 The Abstraction

The abstraction for AP/API is as follows: model the physical interaction between an AP or API munition against fixed- and rotary-wing aircraft and missiles; determine the effect of the damage on each component's ability to function; determine the residual capabilities of the target.

3.2 The Representation

3.2.1 Threat Information

For the JTCG/ME penetration equations, there are a number of parameters needed to fully describe an AP munition which fall into four basic categories: projectile dimensions, material properties, functional capacity, and state of motion. One assumption of the JTCG/ME penetration equations is that all AP projectiles have a cone-shaped nose.

The projectile description consists of the primary dimensions of length and diameter, as shown in Figure 4, and the parameters that describe the

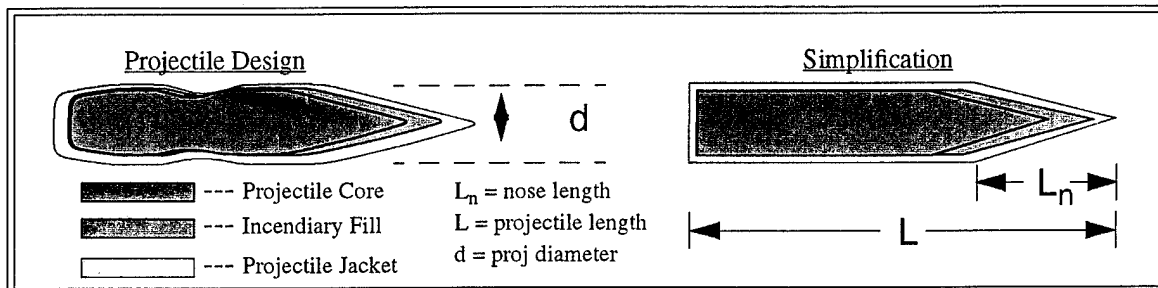


FIGURE 4. Projectile design.

shape: cone angle, ogive radius, and nose length. These parameters are required for both the overall projectile and the projectile core. Also required are the jacket thickness and the weights of the full projectile and core, as well as material properties: elastic modulus, tensile strength, density, Brinell hardness, and speed of sound in the material, which pertain to the core.

Incendiary functioning capability, which indicates whether the round still has incendiary capability, is either true or false. There are four functioning ratios required for the JTCG/ME incendiary functioning algorithms: complete, partial, delayed, and slow burn. The equations for incendiary functioning also require nine empirical constants as described in the JTCG/ME handbook (JTCG/ME 1985), six for the Δq and three for q_a .

The state of motion of the projectile is described by the velocity, yaw angle, and yaw factor. In order to correctly represent the interaction of the projectile and the target, the target's velocity must also be input. Figure 5 is an example of an initial threat file.

```

# Threat      Threat
# Name       Type
# -----
threat2      AntiArmorPiercingProjectile
{
  projectile_diameter = 0.90           # inches
  projectile_length = 3.91            # inches
  projectile_nose_length = 0.80       # inches
  projectile_weight = 2968            # grains
  projectile_tip_diameter = 0.05      # inches
  core_diameter = 0.90                # inches
  core_length = 2.55                  # inches
  core_nose_length = 0.80             # inches
  core_weight = 2550.                 # grains
  core_elastic_modulus = 211.E9       # Pascals
  core_tensile_strength = 1.055E9     # Pascals
  core_density = 1980.0                # grains/cu. in.
  core_sound_speed = 16586.0          # feet/second
  brinell_hardness = 300.0            # feet/second
  jacket_thickness = .05              # inches
  velocity = 3000.0                  # feet/second
  yaw_angle = 0.0                    # radians
  yaw_factor = 1.0                   # between 0 and 1.
  target_speed = 0.0                 # feet/second
  q1 = 0.0                           # delta q constant
  q2 = 0.0                           # delta q constant
  q3 = 0.0                           # delta q constant
  q4 = 0.0                           # delta q constant
  q5 = 0.0                           # delta q constant
  kf2 = 0.0                          # delta q constant
  qf0 = 2.07                         # qa constant
  qf1 = 1.59                         # qa constant
  kf = -.702                         # qa constant
  incendiary = true                   #
  complete_function_ratio = 1.0       #
  partial_function_ratio = 0.5        #
  slow_burn_ratio = 0.5               #
  delayed_function_ratio = 0.5        #
  deflect = false                     #
}

```

FIGURE 5. Initial threat file.

Another input file required to characterize the threat contains the probabilities of incendiary functioning for the various functioning modes: complete, delayed, slow burn, and partial. The probabilities are functions of the incendiary functioning parameters, q_{tn} and q_a , which are described in the JTCG/ME handbook on pages 23 to 30.

3.2.2 Target Information

There are a variety of target-related input files. The first file is the *target description*. The only geometry currently supported by MUVES is BRL-CAD (Muuss 1991a). The second file required is called the *region map file*. It associates the region identification numbers with names which are determined by the analyst. This allows the analyst to group the regions into larger entities (i.e., components). These names from the region map file are then used in all the other component-related input files. Third, the *component category map file* is used to group components. Each group in the component category map file corresponds to a unique IM in MUVES. In other words, the physical interaction of the threat with the components in a particular component category is handled with the same IM. The next component-related input file is the *component properties*

file. This file contains all pertinent component properties necessary for the algorithms being used in MAVEN such as density, Brinell hardness number, bulk modulus, etc. Lastly, the probability of component dysfunction given a hit ($P_{cd/h}$) is required for each component. These probabilities are contained in a file called the *component $P_{cd/h}$ file* and are based on the impactor's mass and velocity.

3.2.3 $O_{1,2}$ Mapping

The $O_{1,2}$ mapping takes place in two steps (see Figure 6). First, the physical interactions between the impactor and the target components are simulated for each component on the threat path. The initial threat parameters and the geometry information (component trace) for the first component on the threat path are passed to the IM for that threat and component category combination. Since the damage criterion for AP projectiles against components is a probability of component dysfunction given a hit ($P_{cd/h}$) as a function of impactor mass and velocity, the impactor's mass and velocity (if the component is critical) are written to a damage packet.

As stated earlier, the mathematical model used to represent the penetration of the impactor through the target is derived from the JTCG/ME handbook (JTCG/ME 1985). Figure 7 shows the flowchart for the principal computation for AP and API projectiles. The algorithms and equations from this handbook apply to the AP and API munitions between 7.62 mm and 57 mm. Target components are relatively thin, and the majority are made primarily from aluminum alloys or low-strength steels. Target components are approximated as plates, even though they may be curved because of the intense localization of the forces from the impactor.

The first step is to calculate the presented area of the projectile. Then a decision is made on the modes of perforation (either piercing or plugging) or ricochet. A different set of equations is used to calculate the changes in the state of motion for each of the three choices. Next, a decision is made on the mode of impactor failure to include core breakup and incendiary functioning.

The JTCG/ME penetration equations are used to calculate the residual mass, velocity, and obliquity of the impactor. In the initial version of MAVEN, the residual obliquity information is not used. In future versions, it will be an analyst's option to generate a new threat path using the residual obliquity (the penetration algorithms are discussed in greater detail later in this section). The residual threat parameters and the geometric information of the next component on the threat path are then passed on to the IM for that threat and component category combination,

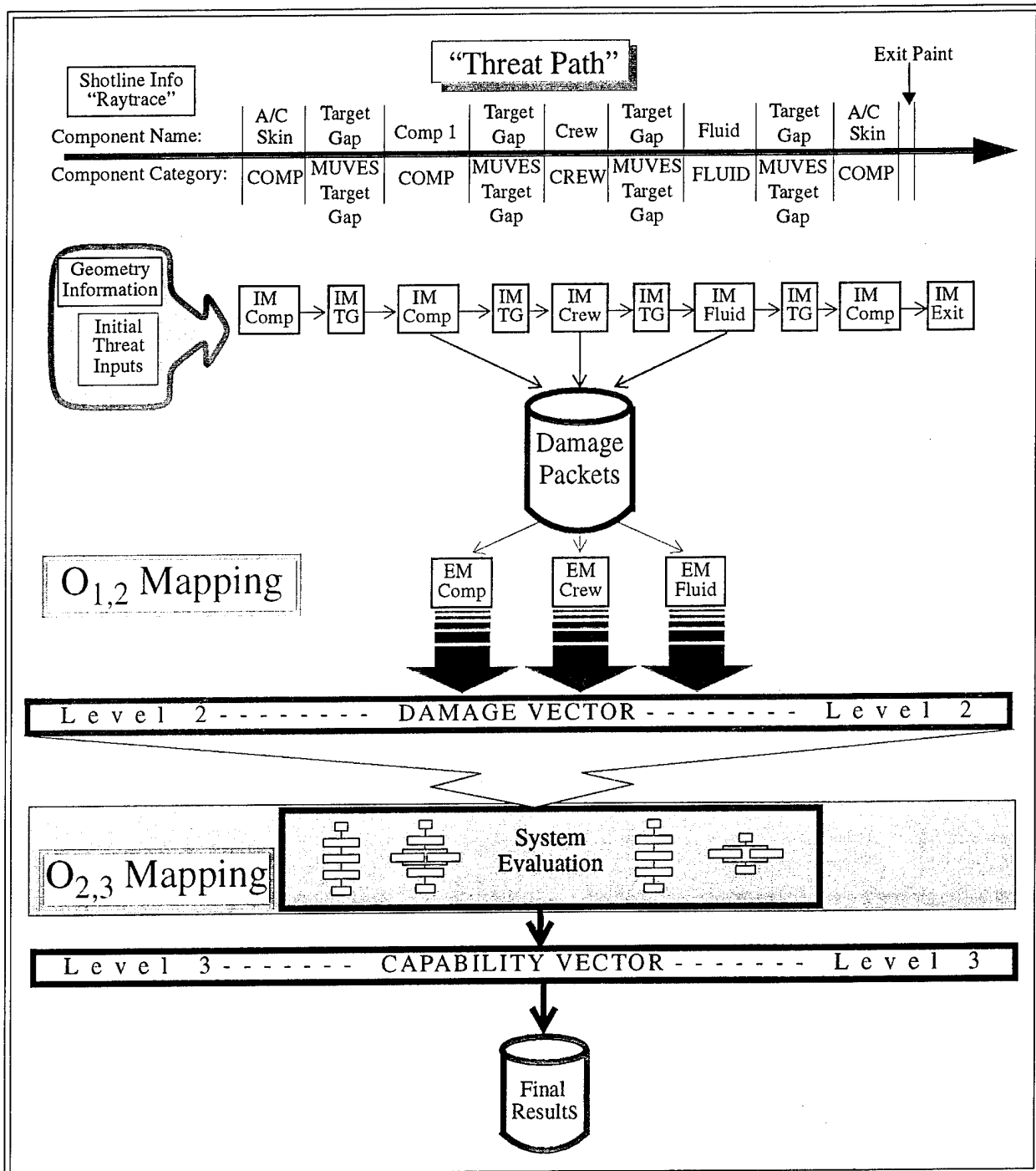


FIGURE 6. MUVES vulnerability computation for one shotline.

where damage is computed, and the damage packet is written for that component. This process is repeated until the impactor exits the target or its velocity or mass is reduced to zero.

Once all target-impactor interactions are processed, the damage packets that were produced are sorted by component. All of the damage packets

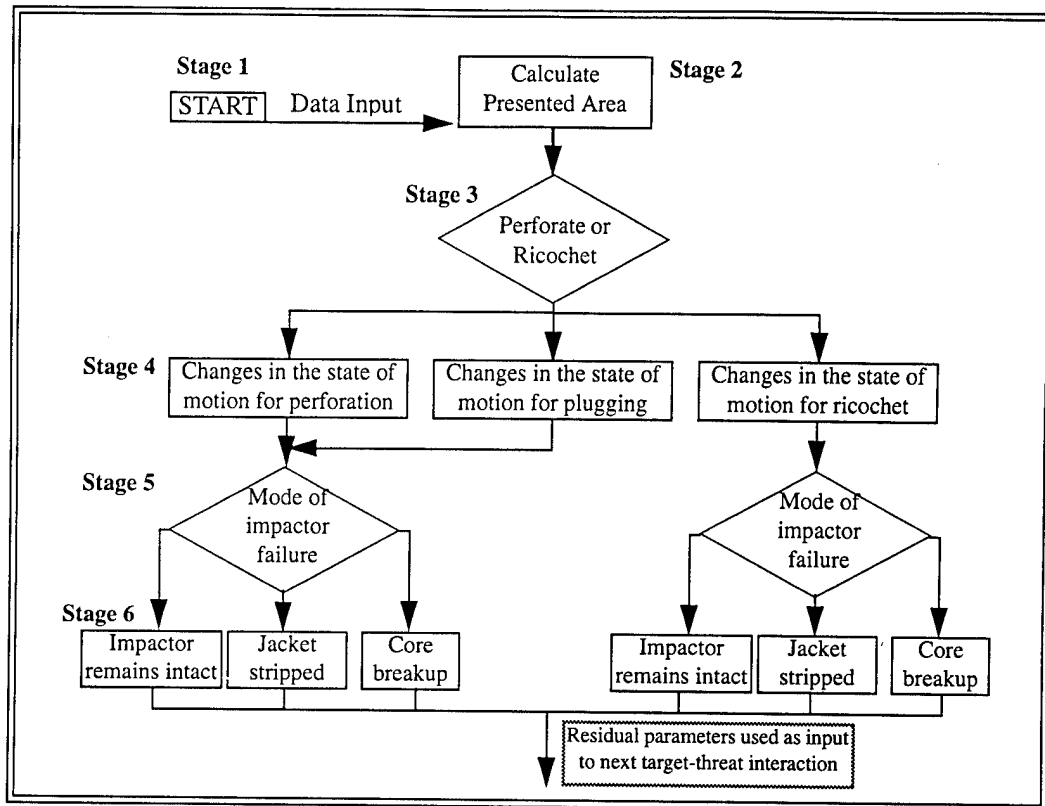


FIGURE 7. Principal computations for AP and API projectiles.

for one component are then passed to the EM for that component. The EM then finishes the $O_{1,2}$ mapping by taking the damage information, mass, and velocity of the impactor and looking up the $P_{cd/h}$ for that component. A random draw is then performed, and the component is determined to be either functional or nonfunctional. That Boolean value is then stored in the damage vector.

The result of the $O_{1,2}$ mapping is a damage vector. The damage vector is a list of the functional state of each critical component (i.e., they are either functional or nonfunctional). Since the fault trees in MAVEN are created using positive logic (see section 3.2.4), the damaged component information is also created using positive logic. Positive logic infers that a fully functional component is represented by a 1 and a completely dysfunctional component is represented by a 0. MAVEN currently produces only Boolean component information.

3.2.4 $O_{2,3}$ Mapping

The $O_{2,3}$ mapping, which converts damaged component information to residual capabilities, is done using fault trees. This is commonly referred to as the Degraded States Vulnerability Methodology (DSVM) (Abell, Roach, Starks 1989). Figure 8 shows an example of series, parallel and combination fault trees. For a series fault tree, all elements of the tree

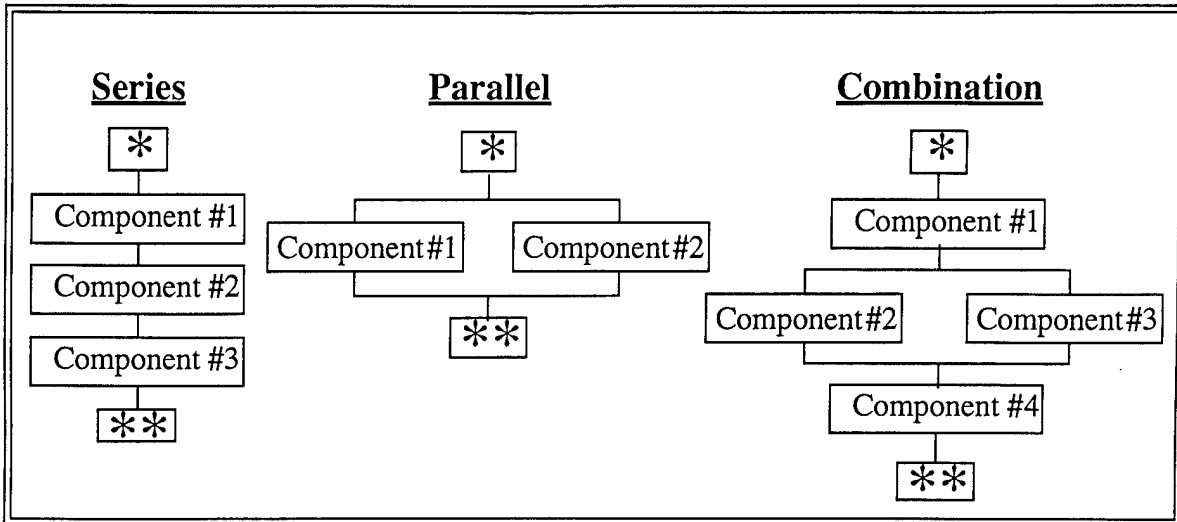


FIGURE 8. Series, parallel, and combination fault trees.

must be functional in order for the capability represented by the tree to be available. In other words, the series relationship is translated into a Boolean “AND”. For the parallel fault tree, if either component is functional, the capability represented by that fault tree is available (i.e., a Boolean “OR” relationship). The third type of fault tree is a combination of the two.

3.2.4.1 System Definition File

The system definition file (*sysdef*) contains the fault trees for all of the systems of interest to the analyst. MUVES has a unique built-in language for specifying fault trees called the system definition language. Figure 9 shows examples of the three types of fault trees discussed in the previous section.

3.2.4.2 States File

The *states* file specifies the output metric for a target to be written to the final results file after it has been damaged by a threat. A states file consists of one or more state vectors. Each state vector contains the name and type of vector followed by one or more vector elements. The vector elements may be either component names, as defined in the region map file, or system names as defined in the system definition file. One or more of the state vectors defined in the states file may be selected by the analyst when running MUVES. It is most useful to the analyst to create a states file containing all of the state vectors that are expected to be needed. Then when conducting an analysis it is simply a matter of selecting the appropriate state vectors from the states file. Figure 10 is an example states file.

Series

```
#  
# Definition for Intermediate Gearbox  
#  
"Intermediate Gearbox" =  
    igb_input_drive_flange  
    & igb_input_bevel_pinion_gear_shaft  
    & igb_input_and_output_gear_shaft_inner_brngs  
    & ibg_output_bevel_gear_shaft  
    & ibg_output_drive_flange_shaft  
    & ibg_input_and_output_gear_shaft_outer_brngs  
    & igb_housing  
    & igb_fan_gearbox
```

Parallel

```
#  
# Definition for M4  
#  
M4 =  
    (  
        lt_engine_inlet_front_frame  
        | rt_engine_inlet_front_frame  
    )
```

Combination

```
#  
# Definition for Main Transmission Lube  
#  
"Main Transmission Lube" =  
    main_transmission_gear_case  
    & (  
        no_1_oil_filter  
        | no_2_oil_filter  
    )  
    & xmsn_oil_sumps_no_1_and_no_2
```

FIGURE 9. System definitions for series, parallel, and combination fault trees.

3.2.4.3 *Damage Evaluation Selection (DES) File*

The damage evaluation selection file is used by the analyst to specify the name of the EM desired to evaluate damage for each critical component. There should be one EM specified for each category of components from the component category map file. Figure 11 shows an example of a DES file.

3.3 The Implementation

The MUVES source code is organized into a variety of different packages where each package is designed to serve a certain need. For example, the Ray-Tracing (Rt) package contains all of the code related to performing ray tracing in MUVES. The software implementation of the MAVEN approximation method required additions to the existing MUVES code. These were additions to the Physical Interaction (Pi) package, the Threat package (Th) and the System Evaluation (Se) package. In the "methods" directory a "maven" directory was added which contains the IM and EM code and other utility functions for initializing data structures and initializing and terminating a MAVEN analysis.

```

#
# State Vector file for maven.
#
#
systems killed -
{
    lt_engine_agb,
    rt_engine_agb
}

mobility killed -
{
    ANY_MOBILITY,
    ALL_MOBILITY,
    M1,
    M2,
    M3,
    M4,
    M5,
    M6,
    M7,
    M8,
    M9,
    M10,
    M11,
    M12,
    M13,
    M14,
    M15,
    M16
}

operate killed -
{
    ANY_OPERATE,
    ALL_OPERATE,
    O1,
    O2,
    O3,
    O4,
    O5,
    O6,
    O8
}

communicate killed -
{
    ANY_COMMUNICATE,
    ALL_COMMUNICATE,
    C1,
    C2,
    C3
}

```

FIGURE 10. States file.

3.3.1 Additions to the Physical Interaction (Pi) Package

The code for doing penetration calculations along the shotline in MUVES is included in the Pi package. The JTCG/ME penetration equations were not previously part of MUVES. There is one main module, PiMeApPen, which controls the flow of calculations and is called from an IM, and a group of smaller modules which carry out specific calculations. Figure 12 is a structure chart which shows the hierarchy of these modules. PiGetPkts and PiGeomPkt get pointers to the threat packet and the geometry information, respectively. PiProjAp contains the equations for calculating the presented area of the projectile on the target component along the shotline. PiModeofPerf calculates the mode of perfora-

```

#
# Damage Evaluation Selection file for target
#
# Critical Component
# Category                               Evaluation Module function name
# -----                               -
components                               aaapp_mass_velocity

# Future component categories shown below
# fluids                                 aaapp_fluids
# dry_bay                               aaapp_fire
# crew                                  aaapp_crew

```

FIGURE 11. Damage evaluation selection file.

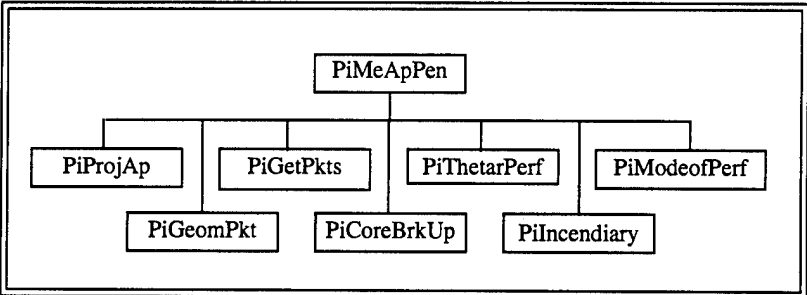


FIGURE 12. JTCG/ME penetration modules in MUVES.

tion, either piercing, plugging, or ricochet. PiThetarPerf calculates the residual obliquity after the impactor has perforated. PiCoreBrkUp performs the core breakup calculations, and PiIncendiary calculates the incendiary functioning probabilities.

3.3.2 Additions to the Threat (Th) Package

The threat information is contained in a data structure called the threat packet. The functions added to the Th package are used to initialize the threat packet, read the initial threat file, and write out information about the threat to the intermediate results file.

3.3.3 Additions to the System Evaluation (Se) Package

The traditional damage vectors and fault trees in MUVES are expressed using negative logic. It was decided that for MAVEN analyses, the fault trees would be expressed using positive logic. Therefore, the Se package was modified to allow production of damage vectors in terms of either positive or negative logic. This functionality was added specifically to support MAVEN, but can be utilized by other approximation methods as well.

3.3.4 *The Method-Specific (MAVEN) Directory*

This directory contains all method-specific code. The file `maven.c` contains all method initialization functions and some utility functions for initiating and terminating analyses. All of the IM and EM code is also contained in this directory. There are four IM's: AP vs. components, AP vs. target gap, flag threat vs. components or target gap, and any threat vs. exit point. A flag threat is a fictitious threat which is propagated down the threat path after the real threat has ceased to penetrate.

3.3.5 *Verification of MAVEN*

To date, a limited verification has been conducted to ensure that the penetration calculations performed in MAVEN are working properly. This has involved modifying COVART 3.3 and MAVEN with many additional print statements to output the values of the intermediate calculations. The values from both codes were then compared. There are a number of deviations between the COVART code and the JTTCG/ME handbook. This is because the last version of the handbook was published in 1985. Since that time the algorithms have evolved and several typographical errors in the handbook have been discovered and corrected. Therefore, the "state-of-the-art" in terms of the JTTCG/ME penetration equations are reflected by the COVART source code. These deviations were confirmed by a COVART expert (Burk 1995). The penetration calculations in MAVEN were changed to agree with those in COVART, Version 3.3.

4. **Future Development Efforts**

There are a number of ongoing development efforts which will greatly increase the functionality of the MAVEN model and enable analysts to perform analyses on a wider range of threats. The next threats to be modeled will be high-explosive and high-explosive incendiary munitions. This will involve modeling both blast and fragments for internally bursting munitions. Also implemented will be a multiple fragments model (externally bursting munitions), a dry bay fire model developed by the U.S. Air Force, and a body-to-body methodology for modeling anti-air munitions against tactical ballistic missiles.

4.1 **High-Explosive (HE) and High-Explosive Incendiary (HEI) Modeling**

There are currently two different methodologies being implemented into MAVEN to model HE and HEI munitions. The first is PCAVAM, which is a combination of manual and spreadsheet calculations. This model considers the combined effects of blast and fragment damage. For MAVEN, only the blast portion of PCAVAM is being used. For the frag-

ment modeling, the FATEPEN 2 (Yatteau, Zernow, and Recht 1991) methodologies will be used. FATEPEN 2 has already been reconfigured and rewritten in the C programming language for use in MAVEN.

4.2 Multiple Fragments

Multiple fragments from externally bursting munitions will be modeled in MAVEN. This work will take advantage of work done by the Logistical and Tactical Targets Branch (LTTB) of BVLD. This approximation method is called the Stochastic Analysis of Fragmenting Effects (SAFE) (Hunt, J.E. 1995). The fragment penetration will be modeled with FATEPEN 2.

4.3 Dry Bay Fire Modeling

The U.S. Air Force, through a contractor, has developed a dry bay fire model (Pascal, A.M. 1994) which calculates the probability of fire initiation and determines the temperature and pressure-time history within three dry bay regions. The model is physics based and very detailed.

4.4 Hit-to-Kill

BVLD is developing the capability to model the lethality of hit-to-kill interceptors. This methodology will use the Tate cratering methodology to simulate the physical interaction of the interceptor missile and the target. This model will differ from current missile lethality simulations in the following ways:

- Measurable/observable results
- Direct use of BRL-CAD target descriptions of both target and interceptor
- Stochastic modeling of physical mechanisms.

5. Conclusion

The Modular Air-system Vulnerability Estimation Network (MAVEN) is part of the Modular UNIX-based Vulnerability Estimation Suite (MUVES) and is a stochastic point-burst model for all classes of air targets to include fixed- and rotary-wing aircraft and missiles. It is to be used during all phases of the acquisition life cycle, from research and development through test and evaluation and fielding. Armor-piercing projectiles are currently the only threats modeled. However, high-explosive, fragmenting and hit-to-kill munitions are currently being added to MAVEN.

INTENTIONALLY LEFT BLANK

6. References

Abell, J. M., L. K. Roach, and M. W. Starks. "Degraded States Vulnerability Analysis." BRL-TR-3010, U.S. Army Ballistic Research Laboratory, Aberdeen Proving Ground, MD, June 1989.

ASI Systems International. "HEIVAM Methodology Documentation User Manual." Anaheim, CA, May 1988.

Barzel, R. Physically-Based Modeling for Computer Graphics. Pasadena, CA: Academic Press, Inc., 1992.

Burk, J. B., D. M. Clausen, R. L. Stadter, and J. H. Young. "HEVART User Manual." Ketron, Inc., Towson, MD, April 1987.

Burk, J. Private Communications. Ketron Division, Bionetics Corporation, Baltimore, MD, 1995.

Deitz, P. H., and A. Ozolins. "Computer Simulations of the Abrams Live-Fire Field Testing." BRL-MR-3755, U.S. Army Ballistic Research Laboratory, Aberdeen Proving Ground, MD, May 1989.

Frank, K., and J. A. Zook. "Energy-Efficient Penetration of Targets." BRL-MR-3885, U.S. Army Ballistic Research Laboratory, Aberdeen Proving Ground, MD, February 1991.

Hanes, P. J., S. L. Henry, K. R. Murray, G. S. Moss, and W. A. Winner. "Modular UNIX^R-based Vulnerability Estimation Suite (MUVES) Analyst's Guide." BRL-TR-3954, U.S. Army Ballistic Research Laboratory, Aberdeen Proving Ground, MD, December 1991.

Hunt, J. E. "An Indirect-fire Muves Approximation Method." Draft, U.S. Army Research Laboratory, Aberdeen Proving Ground, MD, June 1995.

Joint Technical Coordinating Group for Munitions Effectiveness. "COVART 3.0 Users Manual." Aberdeen Proving Ground, MD, Undated.

Joint Technical Coordinating Group for Munitions Effectiveness. "Penetration Equations Handbook for Kinetic Energy Penetrators." 61 JTCG/ME-77-16, Revision 1, Aberdeen Proving Ground, MD, 15 October 1985.

Klopcic, J. T., M. W. Starks, and J. N. Walbert. "A Taxonomy for the Vulnerability/Lethality Analysis Process." BRL-MR-3972, U.S. Army Ballistic Research Laboratory, Aberdeen Proving Ground, MD, May 1992.

Mayerhoffer, R. D., and W. J. Douglass. "Description of the Personal Computer Assisted Vulnerability Assessment Methodology (PCAVAM)." KDR-151-89, Ketron, Inc., Towson, MD, December 1989.

Murray, K. R., G. S. Moss, and S. A. Coates. "Modular UNIX^R-based Vulnerability Estimation Suite (MUVES) Analyst's Guide, Release 2.0." Draft, U.S. Army Research Laboratory, Aberdeen Proving Ground, MD, May 1994.

Muuss, M. J. (compiler). "The Ballistic Research Laboratory CAD Package Release 4.0, Volume IV, The MGED User's Manual." U.S. Army Ballistic Research Laboratory, Aberdeen Proving Ground, MD, December 1991a.

Muuss, M. J. (compiler). "The Ballistic Research Laboratory CAD Package Release 4.0, Volume II, The BRL-CAD User's Manual." U.S. Army Ballistic Research Laboratory, Aberdeen Proving Ground, MD, December 1991b.

Roach, L. K. "Rationale for the Modular Air-system Vulnerability Estimation Network." ARL-TR-581, U.S. Army Research Laboratory, Aberdeen Proving Ground, MD, September 1994.

Walbert, J. N., L. K. Roach, and M. D. Burdeshaw. "Current Directions in the Vulnerability/Lethality Process Structure." ARL-TR-296, U.S. Army Research Laboratory, Aberdeen Proving Ground, MD, October 1993.

Walbert, J. N. "The Mathematical Structure of the Vulnerability Spaces." ARL-TR-634, U.S. Army Research Laboratory, Aberdeen Proving Ground, MD, November 1994.

Pascal, A. M., "Air Force Live Fire Dry Bay Fire Model." Survivability/Vulnerability Information Center, Wright-Patterson AFB, OH, June 1994.

Yatteau, J. D., R. H. Zernow, and R. F. Recht. "Compact Fragment Multiple Plate Penetration Model (FATEPEN 2) Volume 1 - Model Description." NAVSWC TR-91-399, Naval Surface Warfare Center, Dahlgren, VA, January 1991.

NO. OF
COPIES ORGANIZATION

2 ADMINISTRATOR
DEFENSE TECHNICAL INFO CTR
ATTN DTIC DDA
CAMERON STATION
ALEXANDRIA VA 22304-6145

1 DIRECTOR
US ARMY RESEARCH LAB
ATTN AMSRL OP SD TA
2800 POWDER MILL RD
ADELPHI MD 20783-1145

3 DIRECTOR
US ARMY RESEARCH LAB
ATTN AMSRL OP SD TL
2800 POWDER MILL RD
ADELPHI MD 20783-1145

1 DIRECTOR
US ARMY RESEARCH LAB
ATTN AMSRL OP SD TP
2800 POWDER MILL RD
ADELPHI MD 20783-1145

ABERDEEN PROVING GROUND

5 DIR USARL
ATTN AMSRL OP AP L (305)

<u>NO. OF COPIES</u>	<u>ORGANIZATION</u>
1	OSD OUSD AT STRT TAC SYS ATTN DR SCHNEITER 3090 DEFNS PENTAGON RM 3E130 WASHINGTON DC 20301-3090
1	ODDRE AT ACQUISITION AND TECH ATTN DR GONTAREK 3080 DEFENSE PENTAGON WASHINGTON DC 20310-3080
1	ASST SECY ARMY RESEARCH DEVELOPMENT ACQUISITION ATTN SARD ZD RM 2E673 103 ARMY PENTAGON WASHINGTON DC 20310-0103
1	ASST SECY ARMY RESEARCH DEVELOPMENT ACQUISITION ATTN SARD ZP RM 2E661 103 ARMY PENTAGON WASHINGTON DC 20310-0103
1	ASST SECY ARMY RESEARCH DEVELOPMENT ACQUISITION ATTN SARD ZS RM 3E448 103 ARMY PENTAGON WASHINGTON DC 20310-0103
1	ASST SECY ARMY RESEARCH DEVELOPMENT ACQUISITION ATTN SARD ZT RM 3E374 103 ARMY PENTAGON WASHINGTON DC 20310-0103
1	UNDER SEC OF THE ARMY ATTN DUSA OR RM 2E660 102 ARMY PENTAGON WASHINGTON DC 20310-0102
1	ASST DEP CHIEF OF STAFF OPERATIONS AND PLANS ATTN DAMO FDZ RM 3A522 460 ARMY PENTAGON WASHINGTON DC 20310-0460
1	DEPUTY CHIEF OF STAFF OPERATIONS AND PLANS ATTN DAMO SW RM 3C630 400 ARMY PENTAGON WASHINGTON DC 20310-0400

<u>NO. OF COPIES</u>	<u>ORGANIZATION</u>
1	ARMY RESEARCH LABORATORY ATTN AMSRL ST DR FRASIER 2800 POWDER MILL RD ADELPHI MD 20783-1197
1	ARMY RESEARCH LABORATORY ATTN AMSRL SL DR WADE WSMR NM 88002-5513
1	ARMY RESEARCH LABORATORY ATTN AMSRL SL E MR MARES WSMR NM 88002-5513
1	ARMY TRADOC ANL CTR ATTN ATRC W MR KEINTZ WSMR NM 88002-5502
1	ARMY TRNG & DOCTRINE CMND ATTN ATCD B FT MONROE VA 23651 <u>ABERDEEN PROVING GROUND</u>
1	CDR USATECOM ATTN: AMSTE-TA
2	CDR USAMSA ATTN: AMXSY-ST AMXSY-D
4	DIR USARL ATTN: AMSRL-SL, J WADE (433) AMSRL-SL-I, M STARKS (433) AMSRL-SL-C, W HUGHES (E3331) AMSRL-SL-B, P DEITZ (328)

<u>NO. OF COPIES</u>	<u>ORGANIZATION</u>	<u>NO. OF COPIES</u>	<u>ORGANIZATION</u>
1	HQDA ATTN SARD TR DR R CHAIT PENTAGON WASHINGTON DC 20310-0103	1	DUSA FOR OP RSRCH ATTN SAUS OR HON WALT HOLLIS PENTAGON RM 2E660 WASHINGTON DC 20310-0102
1	HQDA ATTN OUSDA A DDRE T&E COL BERNARD B FERGUSON PENTAGON WASHINGTON DC 20301-3110	1	OFC OF THE DEP DIR OF DEF R&E ATTN DR WILLIAM SNOWDEN PENTAGON RM 3D359 WASHINGTON DC 20301
2	HQDA ATTN OUSDA A DDRE R&AT ET MR RICK L MENZ PENTAGON RM 3D1089 WASHINGTON DC 20301-3080	1	ADVANCED RESEARCH PROJECTS AGENCY ATTN MR B BANDY 3701 N FAIRFAX DR ARLINGTON VA 22203-1714
1	HQDA ATTN SARD ZD DR HERBERT K FALLIN JR PENTAGON WASHINGTON DC 20310-0102	1	DEPT OF THE NAVY ATTN RADM CHARLES R MCGRAIL JR PENTAGON RM 4E536 WASHINGTON DC 20350-2000
1	HQDA ATTN OUSD A DDT&E JAMES OBRYON PENTAGON RM 3D1084 WASHINGTON DC 20301-3110	1	COMMANDER ATTN AMCDE PI DAN MARKS 5001 EISENHOWER AVE ALEXANDRIA VA 22333-0001
2	HQDA ATTN OUSD A DDT&E A RAINIS PENTAGON RM 3E1081 WASHINGTON DC 20301-3110	1	COMMANDER ATTN AMCPD DAROLD GRIFFIN 5001 EISENHOWER AVE ALEXANDRIA VA 22333-0001
1	HQDA ATTN SAF AQT MR GEORGE WARREN PENTAGON RM BE939 WASHINGTON DC 2033-1000	2	DIRECTOR ATTN SLCRO MA DR J CHANDRA PO BOX 12211 RSRCH TRI PK NC 27709-2211
1	OFC OF THE ASST SEC OF THE ARMY RD&A ATTN LTG CIANCIOLO MILITARY DEPT PENTAGON WASHINGTON DC 20310-0100	1	COMMANDER ATTN SMCAR TD JIM KILLEN USA ARDEC PICATINNY ARSNL NJ 07806-5000
1	OFC OF THE SEC OF THE ARMY RD&A ATTN MG BELTSON DEPUTY FOR SYSTEMS MANAGEMENT WASHINGTON DC 20310-0103	1	COMMANDER ATTN STRBE FC ASH PATIL RD&E CENTER FT BELVOIR VA 22060-5606

<u>NO. OF COPIES</u>	<u>ORGANIZATION</u>	<u>NO. OF COPIES</u>	<u>ORGANIZATION</u>
1	COMMANDER ATTN STRBE JDA MELVIN GOSS RD&E CENTER FT BELVOIR VA 22060-5606	1	DIRECTOR ATTN SFUS MIS EUGENE P VISCO CRYSTAL SQUARE 2 STE 808 1725 JEFFERSON DAVIS HWY ARLINGTON VA 22202
1	COMMANDER ATTN AMSMI RD J BRADAS US ARMY MISSILE CMD REDSTONE ARSNL AL 35898-5000	1	DIRECTOR ATTN AMSRL SL E USARL WSMR NM 88002-5513
1	COMMANDER ATTN AMSMI YTSD GLENN ALLISON US ARMY MISSILE CMD REDSTONE ARSNL AL 35898-5070	1	COMMANDER ATTN 5164J J JOLLEY US NAVAL AIR SYS CMD USTC AS WASHINGTON DC 20361
1	COMMANDER ATTN AMSMI REX W PITTMAN US ARMY MISSILE CMD REDSTONE ARSNL AL 35898-5500	1	COMMANDER ATTN CODE AIR 516J LTC EXUM US NAVAL AIR SYS CMD WASHINGTON DC 20361
1	COMMANDER ATTN ASST DC OF STAFF FOR COMBAT OPS HQ TRADOC FT MONROE VA 23651-5000	1	COMMANDER ATTN CODE AIR 41112I TOM FURLOUGH ADR PROG MGR WASHINGTON DC 20361-4110
1	COMMANDER ATTN ATAN AP MARK W MURRAY TRADOC FT MONROE VA 23651-5143	2	COMMANDER ATTN CODE 21806 DAVID H HALL CODE 3386 TIM HORTON US NAVAL WEAPONS CENTER CHINA LAKE CA 93555-6001
1	COMMANDER ATTN MG STEPHENSON USA OT&E AGENCY 4501 FORD AVE ALEXANDRIA VA 22302-1458	1	NAVAL GRADUATE SCHOOL ATTN PROF ROBERT E BALL DEPT OF AERONAUTICS AND ASTRONAUTICS MONTEREY CA 93943
1	COMMANDER ATTN LTC GORDON CRUPPER USA OT&E AGENCY 4501 FORD AVE 870 ALEXANDRIA VA 22302-1435	3	COMMANDER ATTN PHILIP WEINBERG JTCG AS5 AIR 516J5 NAVAL AIR SYS CMD WASHINGTON DC 20361-5160
1	DIRECTOR ATTN ATRC WEC P SHUGART TRAC WSMR WSMR NM 88002-5502		

<u>NO. OF COPIES</u>	<u>ORGANIZATION</u>	<u>NO. OF COPIES</u>	<u>ORGANIZATION</u>
2	COMMANDER ATTN GERALD BENNETT MARTIN LENTZ ASB XRM WRIGHT PAT AFB OH 45433	1	COMMANDER ATTN ATZQ TDS SM HQ USA AVIATION CTR & FT RUCKER FT RUCKER AL 36362-5000
1	COMMANDER ATTN KEVIN NELSON FTD SDMBU WRIGHT PAT AFB OH 45433	1	DIRECTOR ATTN US ARMY CONCEPTS ANALYSIS AGY 8120 WOODMONT AVE BETHESDA MD 20814-2797
1	COMMANDER ATTN TOM REINHARDT FTD WRIGHT PAT AFB OH 45433	1	INSTITUTE FOR DEFENSE ANALYSES ATTN MR IRWIN A KAUFMAN 1801 N BEAUREGARD ST ALEXANDRIA VA 22311
1	COMMANDER ATTN JOE SUGRUE FTD SDAEA WRIGHT PAT AFB OH 45433	1	INSTITUTE FOR DEFENSE ANALYSES ATTN CARL F KOSSACK 1005 ATHENS WAY SUN CITY FL 33570
1	COMMANDER ATTN VINCENT VELTEN AFWAL AARA WRIGHT PAT AFB OH 45433	1	INSTITUTE FOR DEFENSE ANALYSES ATTN DR NATARAJAN SUBRAMONIAN 14309 HOLLYHOCK WAY BURTONSVILLE MD 20866
1	COMMANDER ATTN AFATL DLY JAMES B FLINT AIR FORCE ARMAMENT LABORATORY EGLIN AFB FL 32542-5000	1	ADPA ATTN DONNA R ALEXANDER TWO COLONIAL PLACE STE 400 2101 WILSON BLVD ARLINGTON VA 22201-3061
1	COMMANDANT ATTN ATSA DTN SY USA AIR DEFENSE ARTILLERY SCHOOL FT BLISS TX 79916-7090	1	DALE ATKINSON 7703 CARRLEIGHT PARKWAY SPRINGFIELD VA 22152
1	COMMANDANT ATTN ATSA CDC USA AIR DEFENSE ARTILLERY SCHOOL FT BLISS TX 79916-7090	1	AFELM THE RAND CORPORATION ATTN LIBRARY D 1700 MAIN ST SANTA MONICA CA 90406
1	COMMANDANT ATTN ATSK CD USA ORD MIS & MUN CTR & SCHOOL REDSTONE ARSNL AL 35897-6500	2	AIR FORCE WRIGHT AERONAUTICAL LABS ATTN CDJ CPT JOST JOSEPH FAISON WRIGHT PAT AFB OH 45433-6523
1	COMMANDER ATTN ATZQ CDC HQ USA AVIATION CTR & FT RUCKER FT RUCKER AL 36362-5000	1	ASI SYSTEMS INTERNATIONAL ATTN DR MICHAEL STAMATELATOS 3319 LONE JACK RD ENCINITAS CA 92024

<u>NO. OF</u> <u>COPIES</u>	<u>ORGANIZATION</u>	<u>NO. OF</u> <u>COPIES</u>	<u>ORGANIZATION</u>
1	BATTELLE ATTN TWSTIAC 505 KING AVE COLUMBUS OH 43201-2693	1	COMMANDER ATTN ATZL HFM DWAIN SKELTON COMBINED ARMS COMBAT DEVELOPMENT FT LEAVENWORTH KS 66027-5300
1	BATTELLE ATTN ROY GOLLY 2113 EMMORTON PARK RD EDGEWOOD OPERATIONS EDGEWOOD MD 21040	1	COMMANDER ATTN CODE 1210 SEYMOUR N GOLDSTEIN NSWC CARDEROCK DIV BETHESDA MD 20084-5000
1	THE BDM CORPORATION ATTN EDWIN J DORCHAK 7915 JONES BRANCH DR MCLEAN VA 22102-3396	1	DENVER RESEARCH INSTITUTE ATTN LAWRENCE G ULLYATT BW 228 2050 E ILIFF AVE DENVER CO 80208
1	BELL HELICOPTER TEXTRON ATTN JACK R JOHNSON PO BOX 482 FT WORTH TX 76101	1	FMC CORPORATION ATTN RONALD S BECK 881 MARTIN AVE SANTA CLARA CA 95052
1	BOARD ON ARMY SCIENCE & TECHNOLOGY ATTN RM MH 280 2101 CONSTITUTION AVE NW NATIONAL RESEARCH COUNCIL WASHINGTON DC 20418	1	BDM INTERNATIONAL ATTN MR STEVE CHURCH FX2B307 7915 JONES BRANCH DR MCLEAN VA 22102-3396
1	BOOZ ALLEN AND HAMILTON INC ATTN DR RICHARD B BENJAMIN 4141 COLONEL GLENN HWY STE 131 DAYTON OH 45431	1	BDM INTERNATIONAL ATTN MR TOM HOOKER FF2B304 7915 JONES BRANCH DR MCLEAN VA 22102-3396
1	BOOZ ALLEN AND HAMILTON INC ATTN LEE F MALLETT 1300 N 17TH ST STE 1610 ROSSLYN VA 22209	1	GENERAL DYNAMICS CORPORATION ATTN MZ 2650 DAVE BERGMAN PO BOX 748 FT WORTH TX 76101-0748
2	BOOZ ALLEN AND HAMILTON INC ATTN JOHN M VICE WRDC FIVS SURVIAC BLDG 45 AREA B WRIGHT PAT AFB OH 45433-6553	1	CALIFORNIA INSTITUTE OF TECHNOLOGY ATTN D LEWIS 4800 OAK GROVE DR JET PROPULSION LABORATORY PASADENA CA 91109
1	COMMANDER ATTN ATZL CAP LTC MORRISON COMBINED ARMS COMBAT DEVELOPMENT FT LEAVENWORTH KS 66027-5300	1	KAMAN SCIENCES CORPORATION ATTN TIMOTHY S PENDERGRASS 600 BOULEVARD SOUTH STE 208 HUNTSVILLE AL 35802

<u>NO. OF COPIES</u>	<u>ORGANIZATION</u>
1	KETRON INC ATTN ROBERT S BENNETT 901 DULANEY VALLEY RD STE 220 BALTIMORE MD 21204-2600
1	OKLAHOMA STATE UNIVERSITY ATTN THOMAS M BROWDER JR PO BOX 1925 COL OF ENG ARCH & TECH EGLIN AFB FL 32542
1	SOUTHWEST RESEARCH INSTITUTE ATTN MARTIN GOLAND PO DRAWER 28255 SAN ANTONIO TX 78228-0255
1	SPARTA INC ATTN DAVID M MCKINLEY 4901 CORPORATE DR HUNTSVILLE AL 35805-6201
1	SRI INTERNATIONAL ATTN DONALD R CURRAN 333 RAVENSWOOD AVE MENLO PARK CA 94025
1	TASC ATTN RICHARD E KINSLER 1992 LEWIS TURNER BOULEVARD FT WALTON BCH FL 32548-1255
1	SURVICE ENGINEERING ATTN JIM FOULK 1003 OLD PHILADELPHIA RD STE 103 ABERDEEN MD 21001
1	COLEMAN RESEARCH CORPORATION ATTN GEN GLENN OTIS USA RET 5950 LAKEHURST DR ORLANDO FL 32819

<u>NO. OF COPIES</u>	<u>ORGANIZATION</u>
	<u>ABERDEEN PROVING GROUND</u>
2	DIR, USAMSAA ATTN: AMXSY-A, W. CLIFFORD AMXSY-J, A. LAGRANGE
2	CDR, USATECOM ATTN: AMSTE CG AMSTE-TA-L, N. HARRINGTON
1	CDR, USAOC&S ATTN: ATSL-CD-TE
24	DIR, USARL ATTN: AMSRL-SL-BA, DR. JAMES N. WALBERT (1068) MR. RONALD BOWERS (1068) MR. MARK BURDESHAW (1068) MR. STEPHEN POLYAK (1068) MS. LISA ROACH (1068) (10 CPS) MR. ROBERT WALTHER (1068) MR. WILBUR WARFIELD (1068) MR. EARL WEAVER (1068) MR. JEFF HANES (1068) MR. ROBERT KUNKEL (1068) MR. DIRCK TEN BROECK (1068) AMSRL-SL-BL, MR. DENNIS BELY (328) AMSRL-SL-I, DR. MICHAEL W. STARKS (328) AMSRL-SL-BV, MS. JILL H. SMITH (247) AMSRL-SL-N, MR. WILLIAM HUGHES (E3331-EA)

INTENTIONALLY LEFT BLANK.

USER EVALUATION SHEET/CHANGE OF ADDRESS

This Laboratory undertakes a continuing effort to improve the quality of the reports it publishes. Your comments/answers to the items/questions below will aid us in our efforts.

1. ARL Report Number ARL-TR-787 Date of Report July 1995

2. Date Report Received _____

3. Does this report satisfy a need? (Comment on purpose, related project, or other area of interest for which the report will be used.) _____

4. Specifically, how is the report being used? (Information source, design data, procedure, source of ideas, etc.)

5. Has the information in this report led to any quantitative savings as far as man-hours or dollars saved, operating costs avoided, or efficiencies achieved, etc? If so, please elaborate. _____

6. General Comments. What do you think should be changed to improve future reports? (Indicate changes to organization, technical content, format, etc.) _____

CURRENT
ADDRESS

Organization

Name

Street or P.O. Box No.

City, State, Zip Code

7. If indicating a Change of Address or Address Correction, please provide the Current or Correct address above and the Old or Incorrect address below.

OLD
ADDRESS

Organization

Name

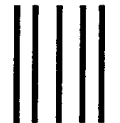
Street or P.O. Box No.

City, State, Zip Code

(Remove this sheet, fold as indicated, tape closed, and mail.)
(DO NOT STAPLE)

DEPARTMENT OF THE ARMY

OFFICIAL BUSINESS



NO POSTAGE
NECESSARY
IF MAILED
IN THE
UNITED STATES

BUSINESS REPLY MAIL
FIRST CLASS PERMIT NO 0001,APG,MD

POSTAGE WILL BE PAID BY ADDRESSEE

DIRECTOR
U.S. ARMY RESEARCH LABORATORY
ATTN: AMSRL-SL-BA
ABERDEEN PROVING GROUND, MD 21005-5068

