

AD \_\_\_\_\_

GRANT NUMBER DAMD17-94-J-4277

TITLE: Breast Tumor Immunity in the Paraneoplastic Neurologic Disorders

PRINCIPAL INVESTIGATOR: Robert B. Darnell, M.D., Ph.D.

CONTRACTING ORGANIZATION: Rockefeller University  
New York, New York 10021

REPORT DATE: October 1996

TYPE OF REPORT: Annual

PREPARED FOR: Commander  
U.S. Army Medical Research and Materiel Command  
Fort Detrick, Frederick, Maryland 21702-5012

DISTRIBUTION STATEMENT: Approved for public release;  
distribution unlimited

The views, opinions and/or findings contained in this report are those of the author(s) and should not be construed as an official Department of the Army position, policy or decision unless so designated by other documentation.

19970326 008

DATE QUALITY INSPECTED 1

# DISCLAIMER NOTICE



**THIS DOCUMENT IS BEST QUALITY AVAILABLE. THE COPY FURNISHED TO DTIC CONTAINED A SIGNIFICANT NUMBER OF PAGES WHICH DO NOT REPRODUCE LEGIBLY.**

# REPORT DOCUMENTATION PAGE

*Form Approved*  
OMB No. 0704-0188

Public reporting burden for this collection of information is estimated to average 1 hour per response, including the time for reviewing instructions, searching existing data sources, gathering and maintaining the data needed, and completing and reviewing the collection of information. Send comments regarding this burden estimate or any other aspect of this collection of information, including suggestions for reducing this burden, to Washington Headquarters Services, Directorate for Information Operations and Reports, 1215 Jefferson Davis Highway, Suite 1204, Arlington, VA 22202-4302, and to the Office of Management and Budget, Paperwork Reduction Project (0704-0188), Washington, DC 20503.

<b>1. AGENCY USE ONLY (Leave blank)</b>	<b>2. REPORT DATE</b> October 1996	<b>3. REPORT TYPE AND DATES COVERED</b> Annual (1 Oct 95 - 30 Sep 96)	
<b>4. TITLE AND SUBTITLE</b> Breast Tumor Immunity in the Paraneoplastic Neurologic Disorders		<b>5. FUNDING NUMBERS</b> DAMD17-94-J-4277	
<b>6. AUTHOR(S)</b> Robert B. Darnell, M.D., Ph.D.			
<b>7. PERFORMING ORGANIZATION NAME(S) AND ADDRESS(ES)</b> Rockefeller University New York, New York 10021		<b>8. PERFORMING ORGANIZATION REPORT NUMBER</b>	
<b>9. SPONSORING/MONITORING AGENCY NAME(S) AND ADDRESS(ES)</b> U.S. Army Medical Research and Materiel Command Fort Detrick Frederick, Maryland 21702-5012		<b>10. SPONSORING/MONITORING AGENCY REPORT NUMBER</b>	
<b>11. SUPPLEMENTARY NOTES</b>			
<b>12a. DISTRIBUTION / AVAILABILITY STATEMENT</b> Approved for public release; distribution unlimited		<b>12b. DISTRIBUTION CODE</b>	
<b>13. ABSTRACT (Maximum 200 words)</b> Paraneoplastic neurologic disease (PND) antigens are proteins normally expressed specifically in neurons that are expressed ectopically in tumors. It is believed that when expressed in tumors outside of the immunologically privileged nervous system, PND antigens stimulate the development of anti-tumor immunity, but also stimulate an autoimmune neuronal degeneration. We are studying PND's associated with breast cancer and immunity to the Nova and cdr2 antigens, assaying PND expression in clinical breast tumor specimens, and establishing animal models for the disorders. A prerequisite to studying the abnormal expression of PND antigens is an understanding of their normal expression. We have found that the Nova gene and antigen is normally restricted in expression to neurons. Strikingly, we have discovered that the cdr2 gene is widely expressed, but that its mRNA is under tight translational control, so that the cdr2 antigen is normally made only in neurons and (immune privileged) testes. This observation provides a novel insight to the biology of breast tumors, suggesting that they may dysregulate translational control to express abnormal proteins, and alters our approach to the analysis of cdr2 expression in vivo. We have also made significant progress in generating gene constructs to generate mouse models of PND.			
<b>14. SUBJECT TERMS</b> Breast Cancer, paraneoplastic, neurologic disorders, tumor antigens, onconeural antigens, animal model		<b>15. NUMBER OF PAGES</b> 15	
		<b>16. PRICE CODE</b>	
<b>17. SECURITY CLASSIFICATION OF REPORT</b> Unclassified	<b>18. SECURITY CLASSIFICATION OF THIS PAGE</b> Unclassified	<b>19. SECURITY CLASSIFICATION OF ABSTRACT</b> Unclassified	<b>20. LIMITATION OF ABSTRACT</b> Unlimited

FOREWORD

Opinions, interpretations, conclusions and recommendations are those of the author and are not necessarily endorsed by the U.S. Army.

(X) Where copyrighted material is quoted, permission has been obtained to use such material

(X) Where material from documents designated for limited distribution is quoted, permission has been obtained to use the material.

(X) Citations of commercial organizations and trade names in this report do not constitute an official Department of the Army endorsement or approval of the products or services of these organizations.

(X) In conducting research using animals, the investigator(s) adhered to the "Guide for the Care and Use of Laboratory Animals," prepared by the Committee on Care and Use of Laboratory Animals of the Institute of Laboratory Animal Resources, National Research Council (NIH Publication No. 86-23, Revised 1985

(X) For the protection of human subjects, the investigator(s) have adhered to policies of applicable Federal Law 45 CFR 46.

(X) In conducting research utilizing recombinant DNA technology, the investigator(s) adhered to current guidelines promulgated by the National Institutes of Health.

RO B D  
Principal Investigator's Signature

10-28-96  
Date

TABLE OF CONTENTS:

FRONT COVER ..... p. 1  
SF 298 ..... p. 2  
FOREWORD ..... p. 3  
TABLE OF CONTENTS ..... p. 4  
INTRODUCTION ..... p. 5  
BODY ..... p. 6-9  
CONCLUSIONS ..... p. 9-11  
METHODS ..... p. 11-12  
REFERENCES ..... p. 13-14  
APPENDIX (Figures 1-5) ..... p. 15-18

**INTRODUCTION:**

Paraneoplastic neurologic disease (PND) antigens are proteins normally expressed specifically in the central nervous system (CNS) that are expressed ectopically in tumors, most commonly breast, ovarian and lung cancers (Posner and Furneaux, 1990), and we have termed such proteins onconeural antigens (Darnell et al., 1991; Darnell, 1994; Darnell, 1996). It is believed that their expression in tumors outside of the immunologically privileged CNS allows for their recognition by the immune system, and consequently a clinically effective anti-tumor immune response (Posner and Furneaux, 1990; Darnell, 1996). Tumor suppression is a significant factor in the majority of PND patients (Darnell and DeAngelis, 1993; Darnell, 1994; Darnell, 1996).

Studies of the expression and function of onconeural antigens in tumors and brain are lacking, as are animal models of their role in tumor biology and immunology. The purpose of the present work is to expand our understanding of the expression of onconeural antigens, and to develop an animal model for these syndromes. These studies are necessary to test and refine our model of the pathogenesis of these disorders. PND's provide examples of *bona fide* anti-breast tumor immunity in humans, and our hope is that the studies underway in this project will enable a detailed analysis of the mechanisms of successful anti-tumor immunity.

The methods of study in this project depend on the use of cloned genes (Sakai et al., 1990; Fathallah-Shaykh et al., 1991; Buckanovich et al., 1993; Corradi and Darnell, 1993) encoding the PND breast tumor antigens Nova and cdr2. The first specific aim is to assay clinical tumor specimens for the expression of PND genes and the presence of PND antigens. In some cases, it will also be appropriate to assay for co-factors that might be associated with the immune recognition of PND antigen (i.e. if we cannot establish a direct relationship between PND antigen expression and anti-tumor immunity). The second and third aims are complementary approaches aimed at establishing animal models for the breast tumor associated PND's, using breast tumor cell lines transfected with PND genes and transgenic mice making breast tumors expressing PND genes, respectively.

**BODY:**Characterization of the Expression of PND Genes:

One test of the model presented for the pathogenesis of the PND's is that the expression of onconeural antigens is normally restricted to neurons, allowing them to be recognized by the immune system as "foreign" antigens when ectopically expressed in breast tumors. We have focused on the "Yo" antigen, which is expressed in breast and ovarian tumors. This antigen is normally expressed in Purkinje neurons and is targeted in patients with paraneoplastic cerebellar degeneration (PCD) in clinical tumor specimens and in normal tissues. Recently an additional neuronal gene termed *cdr3*, highly related to the *cdr2* gene thought to encode the Yo tumor antigen, has been cloned (Posner et al., personal communication, unpublished data). To establish which *cdr* gene, if either, is expressed and thereby able to encode the 52kD Yo breast and ovarian tumor antigen, we obtained three clinical tumor specimens from patients with PCD. From one patient, we were also able to obtain a section of cerebellum (courtesy of Dr. J. Dalmau) to confirm that the patient had typical PCD. Figure 1 shows that immunohistochemical staining of a section of brain from patient 3 and a normal control using PCD antiserum. There is no cellular neuronal staining in the section of brain from the PCD, and all of the Purkinje neurons are absent (presumably destroyed), confirming that this patient suffered from typical immune-mediated PCD. RNA was extracted from tumor samples from this and two other patients and the expression of *cdr2* and *cdr3* was evaluated by RT-PCR analysis. Figure 2 demonstrates that each tumor expressed readily detectable *cdr2* mRNA, but no detectable *cdr3* mRNA. As a control, brain RNA assayed for expression of *cdr2* and *cdr3* mRNA was found to express readily detectable levels of both.

In addition to confirming that *cdr2* is likely to be the relevant gene encoding the *bona fide* breast and ovarian "Yo" tumor antigen, we have pursued our studies of *cdr2* mRNA expression. Surprisingly, we have found that *cdr2* mRNA is abundant in all tissues, as assessed by Northern blot and RT-PCR analysis (data shown last year). Moreover, sequencing of full length cDNA clones from brain and spleen revealed no changes in the sequence of the mRNA in either tissue (data not shown). We also have shown that antibody to *cdr2* only recognizes protein in brain and testis, as assessed by Western blot analysis (Figure 3A in 1995 Report).

To confirm and extend these results, we have now compared immunohistochemical and *in situ* hybridization analysis of *cdr2* protein and mRNA expression. These studies demonstrate that the *cdr2* antigen is indeed expressed in a tissue-specific manner. Within the nervous system, both *cdr2* protein and mRNA are found within discrete sets of neurons (primarily Purkinje cerebellar neurons, a few brainstem nuclei, and dorsal root ganglia; Figure 3 and data not shown). Outside of the nervous system *cdr2* mRNA is widely expressed, although, surprisingly, with a high degree of tissue specificity within some tissues (e.g. splenic cortex, testicular spermatogonia; Figure 3). However, immunohistochemical analysis of Yo antigen expression revealed no expression outside of the nervous system except within the spermatogonia of the testis (Figure 3). Notably, normal breast tissue or ovarian tissue did not express *cdr2* antigen, while tumor tissue does (Darnell, 1996; data not shown). We also note in this context that testis is normally the major immunologically isolated site outside of the nervous system.

The observation that *cdr2* antigen expression is tissue specific is consistent with the current model of PND pathogenesis, and is particularly significant for the current project. It indicates that the study of *cdr2* mRNA in breast and ovarian tumor tissues, as originally proposed, is not the appropriate level of analysis. Rather, an analysis of *cdr2* antigen expression, as assayed by Western blot and immunohistochemistry, will be the relevant focus of study for this antigen. We have now pursued this observation by examining expression of the *cdr2* antigen from non-PND human tumor samples. We have found that

~60% of all human ovarian tumors appear to express the cdr2 antigen by Western blot analysis (N=16; Figure 4). To determine whether the immunoreactive band co-migrating on one dimensional SDS-PAGE in tumor and brain is actually the same protein, we have also examined cdr2 expression by two-dimensional IEF/SDS-PAGE analysis. We find that brain, testis, and ovarian tumors and HeLa cells all express identically migrating PCD antigen reactive with affinity purified Yo antisera (Figure 5). These data indicate that the majority of human ovarian tumors express the cdr2 tumor antigen. We have also begun to look at human non-PND breast tumors, and find in a small sample that 25% of these tumors express cdr2 (N=4; data not shown).

Preliminary work indicated that the expression of the Nova antigen was normally restricted to neurons using PND antisera to assay protein expression (Buckanovich, et al., 1993) However, since we have found evidence for more than one Nova gene family member (Darnell et al., unpublished data), we have pursued this observation at the level of expression of the Nova-1 gene, using a gene specific probe for *in situ* hybridization. These studies (Buckanovich et al., 1996) confirm that the Nova-1 gene and antigen are restricted to neurons at all points during the normal development of mice, and support the model for the pathogenesis of the PNDs outlined in the introduction. Studies of Nova mRNA and protein expression in non-PND breast and ovarian tumor tissue is currently underway.

#### Animal Models of Breast Tumor Immunity

We have proposed to establish a model for anti-breast tumor immunity in mice using a breast tumor cell line (RAC) transfected with the PND breast tumor antigens Nova and cdr2. For reasons that we do not understand, we have not been able to maintain stable RAC cell lines expressing cdr2. In several independent experiments, cells transfected with cdr2 expression constructs and selectable markers (pcDNA3 or pMSG) were selected for 3-4 weeks in the presence of either G418 or gpt selection medium. In every case, drug resistant clones were obtained, but in no case did they express cdr2 protein (assayed by Western blot analysis). This contrasts with our background data (presented in Figure 5, 1995 Report) demonstrating that these constructs do express high levels of cdr2 in transient transfection assays. We are currently pursuing these observations by analyzing whether cdr2 expression might cause functional changes in these cells that interfere with cell growth. One such function would be impingement on cell cycle progression or viability.

We also had difficulty obtaining stable lines expressing Nova-1, although again transient transfections with the pcDNA-Nova construct showed robust levels of protein expression. We have, however, succeeded in establishing a stable RAC cell line expressing Nova-1 from the MMTV promoter. Clonal cell lines are currently being established for use in the planned tumor implantation experiments in mice.

We have also proposed using currently available breast tumor transgenic mice (MMTV-wnt, neu and myc) to test the role of PND antigens in anti-tumor immunity. To adequately control these studies, we plan to adoptively transfer transgenic breast tumors that either do or do not express PND antigens into naive syngeneic mice.

The background work to establish such experiments includes an analysis of transgenic breast tumors for endogenous PND antigen expression, followed by construction of MMTV-driven PND expression vectors. To date, we have obtained MMTV-myc and MMTV-wnt breast tumor tissue (from Charles River and H. Varmus, respectively) for analysis of PND expression. We have analyzed these tumors for Nova antigen expression, and find no evidence that they express this antigen (data not shown). Initial studies indicated that each tumor type expressed cdr2 mRNA (data not shown); however, given our results indicating that cdr2 is under tight translational control, we also evaluated cdr2 antigen expression in these tumors by Western blot analysis. We found that the myc, and possibly wnt tumors, appear to express cdr2 antigen by one-dimensional SDS-PAGE analysis. While this may be consistent with our observation that up to 60% of non-PND

tumors express cdr2, it would also complicate our animal model studies. We are thus currently re-analyzing the putative cdr2 expression in these tumors using the 2D-SDS-PAGE analysis we have established.

Since we have obtained evidence that significant numbers of human tumors express onconeural antigens without evidence of a concomitant paraneoplastic immune response, there must exist additional factors that determine the development of the immune response. One candidate factor discussed in the original proposal that we now wish to investigate are the presence of co-stimulators (e.g. B7-1, B7-2). This will be done by immunohistochemical analysis of frozen sections of both PND and non-PND associated breast and ovarian tumors. The expression of such molecules specifically in tumors that are associated with the paraneoplastic immune response would allow insight into the nature of the PND anti-tumor immunity. The results of these studies will also help us to better plan our transgenic animal model in a way which more closely mimics human tumor immunity (e.g. developing transgenic breast tumor mice that co-express cdr2 and co-stimulator). At the same time, we will complete our studies of Nova expression in human tumors. If we do not find evidence of Nova expression in non-PND breast tumors, we will continue with the originally planned transgenic animal model, using the MMTV-driven Nova expression construct we have made.

### CONCLUSIONS:

The completed research demonstrates that the Nova and cdr2 PND antigens are both normally expressed in immune-privileged sites. This supports our general model for the pathogenesis of the breast tumor immunity seen in PND patients. That is, the immune system appears to recognize these antigens in the context of breast tumor cells as foreign antigens; their normal restriction to neurons (and testis for cdr2) sequesters them from immune surveillance and prevents their recognition as self antigens. Strikingly, we have found that the mechanisms for sequestering Nova and cdr2 antigens to neurons are very different. Nova mRNA and protein are found to be sequestered to neurons at all developmental times. In contrast, cdr2 mRNA is widely expressed in various tissues; within the nervous system its expression is restricted to Purkinje cerebellar neurons, brainstem neurons and dorsal root ganglia, but outside the nervous system many tissues express the gene. Tight restriction of cdr2 antigen expression to neurons and testis is demonstrated by Western blot and immunohistochemical analysis, leading to the conclusion that post-transcriptional (likely translational) regulatory mechanisms restrict the expression of cdr2 to immune-privileged sites.

These studies suggest that the cdr2 gene is under strict regulatory control. Our findings are reminiscent of observations of neuron-specific gene transcription mediated by transcriptional silencers outside of the nervous system (Chong et al., 1995). Moreover, a direct precedent for our findings can be found in studies of the expression of the BTEB transcription factor. BTEB mRNA is made in many tissues but, due to 5'-UTR translational control elements, the protein is made only in brain and testis (Imataka et al., 1994).

Our observations have important implications for the role of cdr2 in breast and ovarian tumor biology, suggesting for example that tumors that ectopically express cdr2 antigen have dysregulated translational control mechanisms. Such dysregulation has not been previously observed in breast tumors, and suggests a possible target for therapeutic intervention. Moreover, these observations suggest a means for identifying this control mechanism. We have begun a systematic analysis of cdr2 translational control, work that should bear on the mechanism of its induction in breast tumors.

By substantiating the observation that the cdr2 antigen is expressed *de novo* in a significant number of ovarian and perhaps breast tumors, we have accomplished several of the goals of this work. First, we have established the identification of these antigens as bona fide

tumor markers. Second, by expanding their utility from markers in rare patients with PND to markers in many breast and ovarian tumor patients, we will have greatly broadened the practical significance of this observation.

Most importantly, we are now interested in exploring the significance of this result to anti-tumor immunity. Specifically, it is known that large numbers (perhaps all) small cell lung cancers (SCLCa) express the Hu onconeural antigen, and that up to 15% of SCLCa harbor low titer antibodies to the Hu antigen. Remarkably, this subset of SCLCa patients also have limited disease (Dalmau et al., 1990), as well as an associated increased complete response to therapy and improved survival (Graus et al., in press). By analogy, then, our observation that large numbers of ovarian and perhaps breast tumor patients express the cdr2 and perhaps Nova onconeural antigens predicts a simple way to identify patients with inherent anti-tumor immunity without neurologic disease. We hypothesize that some of the patients (perhaps 15%) whose tumors express these onconeural antigens will have evidence of active anti-tumor immunity--limited disease, complete response to therapy, and/or improved survival. To establish support for this hypothesis, however, we will need to generate a sensitive assay for anti-cdr2 or anti-Nova low level immunity. This would be established using the recombinant onconeural fusion proteins. One complication that would need to be addressed in setting up such a study is the insolubility of the cdr2 fusion protein. One straightforward solution to this problem would be to express the protein in baculovirus, a project currently underway.

## METHODS

*Tumor RNA Extraction and RT-PCR.* Frozen samples of ovarian tumors removed from patients with Yo-positive PCD were obtained from the Memorial Sloan Kettering Cancer Center. 100mg sections were used for purification of either total or poly A+ RNA. Total RNA was prepared by the method of Chomczynski and Sacchi (Chomczynski and Sacchi, 1987), and the samples were subsequently treated with RQ1 RNase-free DNase (Promega, Madison, WI) before RT-PCR analysis. For the purification of poly A+ RNA, the section was homogenized by sonication in 400µl extraction buffer (4M guanidinium thiocyanate, 0.1M Tris-HCl pH 8.0, 1% dithiothreitol, 0.5% lauryl sarcosinate), 800µl of binding buffer (0.1M Tris-HCl pH 8.0, 0.4M LiCl, 20mM EDTA) was added and the lysate was centrifuged at 18,000 x g for five minutes. Magnetic Dynabeads Oligo (dT)<sub>25</sub> (DynaL, Inc., Great Neck, NY) were prepared by washing 300µl of beads once with 200µl Binding Buffer. The lysate supernatant was added to the Dynabeads, mixed, and incubated at room temperature for 3-5 minutes. A magnet was used to immobilize the beads, the supernatant was removed and the beads were washed three times with 0.5 ml wash buffer (10mM Tris-HCl pH 8.0, 0.15M LiCl, 1mM EDTA). PolyA+ RNA was then eluted in 20µl 2mM EDTA pH 8.0 at 65°C for two minutes.

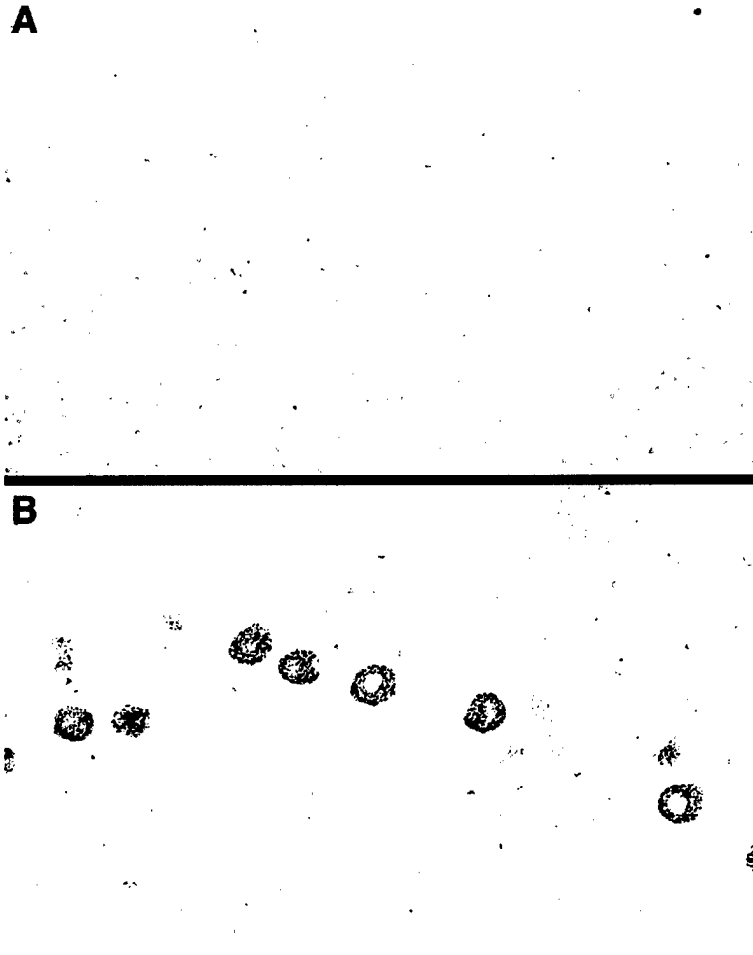
For RT-PCR reactions 2µl tumor polyA+ RNA, 1-2µg total tumor RNA or 20ng polyA+ RNA from normal tissues (CLONTECH Laboratories, Inc., Palo Alto, CA) were denatured at 70°C for ten minutes and placed on ice. The RNA was reverse transcribed using random hexanucleotide primers (Boehringer Mannheim, Indianapolis, IN) and Superscript reverse transcriptase (Gibco BRL, Gaithersburg, MD) at 42°C for 50 minutes and the reaction stopped by incubation at 95°C for 5 minutes. One-tenth of the first strand cDNA sample was used as template for a PCR reaction using AmpliTaq polymerase (Perkin Elmer Corp., Norfolk, CT) and the following forward and reverse oligonucleotide primers corresponding to cdr2: 5'-TGAATGGAGTTGAGA AGCTGGTG-3' and 5'-GAGATGCCCCCTCTGTTTCAC AG-3'; and cdr3: 5'-CATTGAGCGCCTCCAGGCT-3' and 5'-AGCTCCTTGAGG CAGGGGAA-3'. The product was amplified for 35 cycles (94°C for 30 seconds, 55°C for 30 seconds, 72°C for 1 minute). PCR products were labeled by addition of trace amounts of  $\alpha^{32}\text{P}$ -dCTP (Amersham Life Science Inc., Arlington

Heights, IL) to the reaction mixtures and were loaded on a 10% non-denaturing acrylamide gel and visualized by autoradiography.

*Two-dimensional gel electrophoresis.* Cerebella and testes from Sm/Ckc mice were homogenized in 2D lysis buffer (9.5M urea, 2% NP-40, 5%  $\beta$ -mercaptoethanol, 2% Biolyte ampholytes (BioRad Labs, Hercules, CA) consisting of 75% 3/5 range and 25% 3/10 range Biolytes). The lysate was clarified by centrifugation at 2100 x g for five minutes, and protein concentrations were adjusted with 2D lysis buffer. Isoelectric focusing (IEF) gels were performed essentially by the method of O'Farrell (O'Farrell, 1975). 0.75mm IEF slab gels (9.2M urea, 4% acrylamide (ReadySol IEF, Pharmacia Biotech), 2% NP-40, and 5% Biolyte ampholytes) were loaded with 40 $\mu$ g of total protein per lane, and the samples were covered with sample overlay buffer (7% urea, 2.5% ampholytes, 5%  $\beta$ -mercaptoethanol). The gels were run using 0.01M H<sub>3</sub>PO<sub>4</sub> and 0.02M NaOH buffers as described (O'Farrell, 1975) at 4W constant power. Voltage was limited to 700V and gels were run for 1800V-hr. Lanes containing the samples were cut from the gel, equilibrated with 1X SDS sample buffer for five minutes, and loaded horizontally onto a 1mM 9% SDS-PAGE gel with a 3% stacking gel. A single well was loaded with 40 $\mu$ g protein extract in SDS sample buffer for one-dimensional analysis. Gels were transferred to nitrocellulose and probed with PCD antisera.

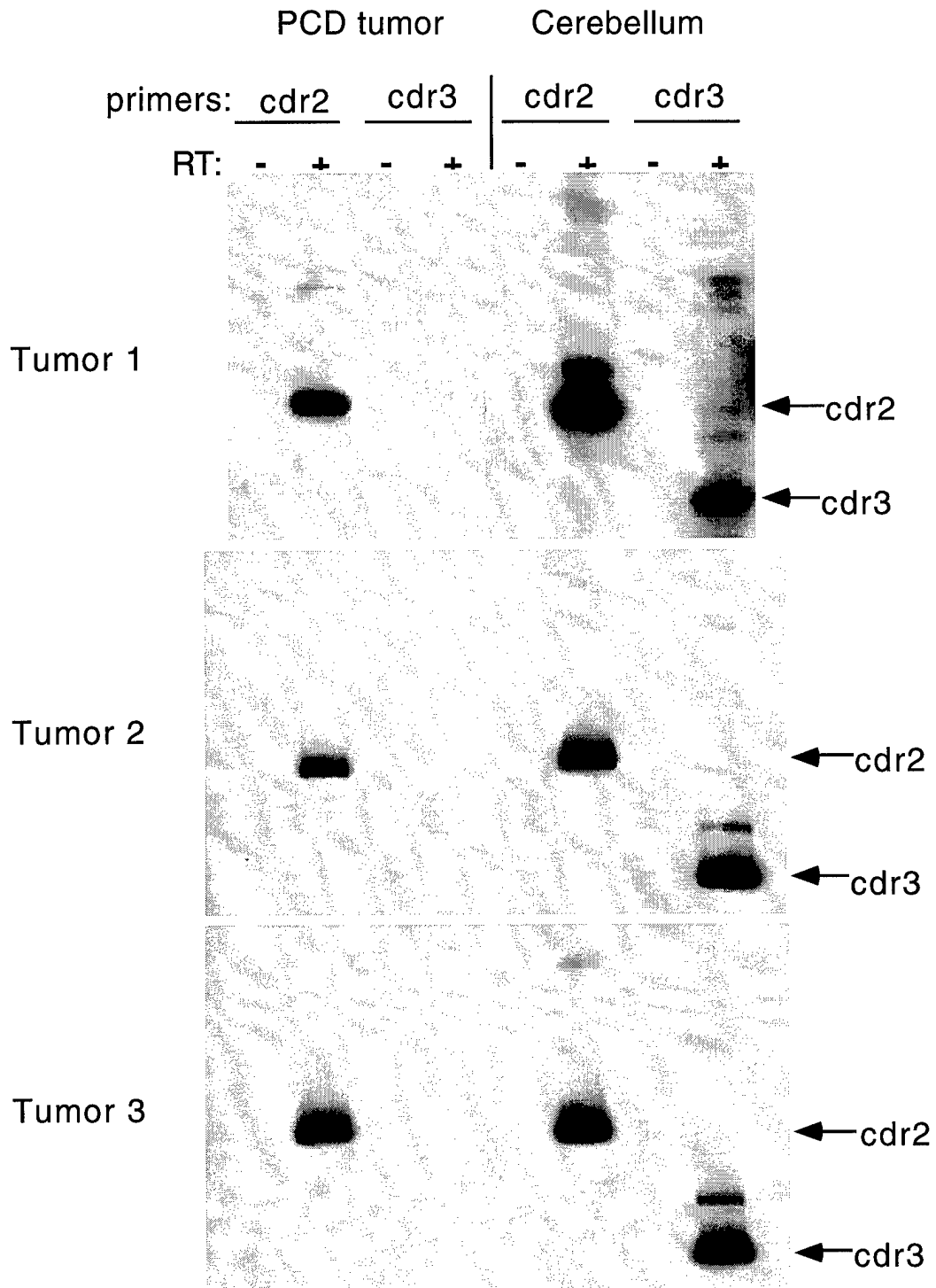
**REFERENCES:**

- Buckanovich, RJ, Posner, JB and Darnell, RB (1993) Nova, the paraneoplastic Ri antigen, is homologous to an RNA-binding protein and is specifically expressed in the developing motor system. *Neuron* 11: 657-672.
- Buckanovich, RJ, Yang, YY and Darnell, RB (1996) The onconeural antigen Nova-1 is a neuron-specific RNA binding protein, the activity of which is inhibited by paraneoplastic antibodies. *J Neurosci* 16: 1114-1122.
- Chomczynski, P and Sacchi, N (1987) Single-step method of RNA isolation by acid guanidinium thiocyanate-phenol-chloroform extraction. *Anal. Biochem.* 162: 156-159.
- Chong, JA, Tapia-Ramire, J, Kim, S, Toledo-Aral, JJ, Zheng, Y, Boutros, MC, Altshuler, YM, Frohman, MA, Kraner, SD and Mandel, G (1995) REST: a mammalian silencer protein that restricts sodium channel gene expression to neurons. *Cell* 80: 949-957.
- Corradi, J and Darnell, R (1993) The paraneoplastic antigen CDR2, a Purkinje neuron-specific leucine zipper protein, has a novel structure in tumor cells. *J Cell Biochem* 17: 251.
- Dalmau, J, Furneaux, HM, Gralla, RJ, Kris, MG and Posner, JB (1990) Detection of the anti-Hu antibody in the serum of patients with small cell lung cancer--a quantitative Western blot analysis. *Ann Neurol* 27: 544-552.
- Darnell, RB (1994) Paraneoplastic syndromes. In *Current diagnosis in neurology*, E. Feldmann, eds. (Mosby-Year Book, Inc., Philadelphia), pp. 137-141.
- Darnell, RB (1996) Onconeural antigens and the paraneoplastic neurologic disorders: at the intersection of cancer, immunity and the brain. *Proc Natl Acad Sci USA* 93: 4529-4536.
- Darnell, RB and DeAngelis, LM (1993) Regression of small-cell lung carcinoma in patients with paraneoplastic neuronal antibodies. *Lancet* 341: 21-22.
- Darnell, RB, Furneaux, HM and Posner, JR (1991) Antiserum from a patient with cerebellar degeneration identifies a novel protein in Purkinje cells, cortical neurons, and neuroectodermal tumors. *J Neuroscience* 11: 1224-1230.
- Fathallah-Shaykh, H, Wolf, S, Wong, E, Posner, J and Furneaux, H (1991) Cloning of a leucine-zipper protein recognized by the sera of patients with antibody-associated paraneoplastic cerebellar degeneration. *Proc Natl Acad Sci USA* 88: 3451-3454.
- Imataka, H, Nakayama, K, Yasumoto, K, Mizuno, A, Fujii-Kuriyama, Y and Hayami, M (1994) Cell-specific translational control of transcription factor BTEB expression. *J Biol Chem* 269: 20668-20673.
- O'Farrell, PH (1975) High resolution two-dimensional electrophoresis of proteins. *J Biol Chem* 250: 4007-4021.
- Posner, JB and Furneaux, HM (1990) Paraneoplastic syndromes. In *Immunologic mechanisms in neurologic and psychiatric disease*, B. H. Waksman, eds. (Raven Press, Ltd., New York), pp. 187-219.
- Sakai, K, Mitchell, D, Tsukamoto, T and Steinman, L (1990) Isolation of a complementary DNA clone encoding an autoantigen recognized by an anti-neuronal antibody from a patient with paraneoplastic cerebellar degeneration. *Ann Neurol* 28: 692-698.

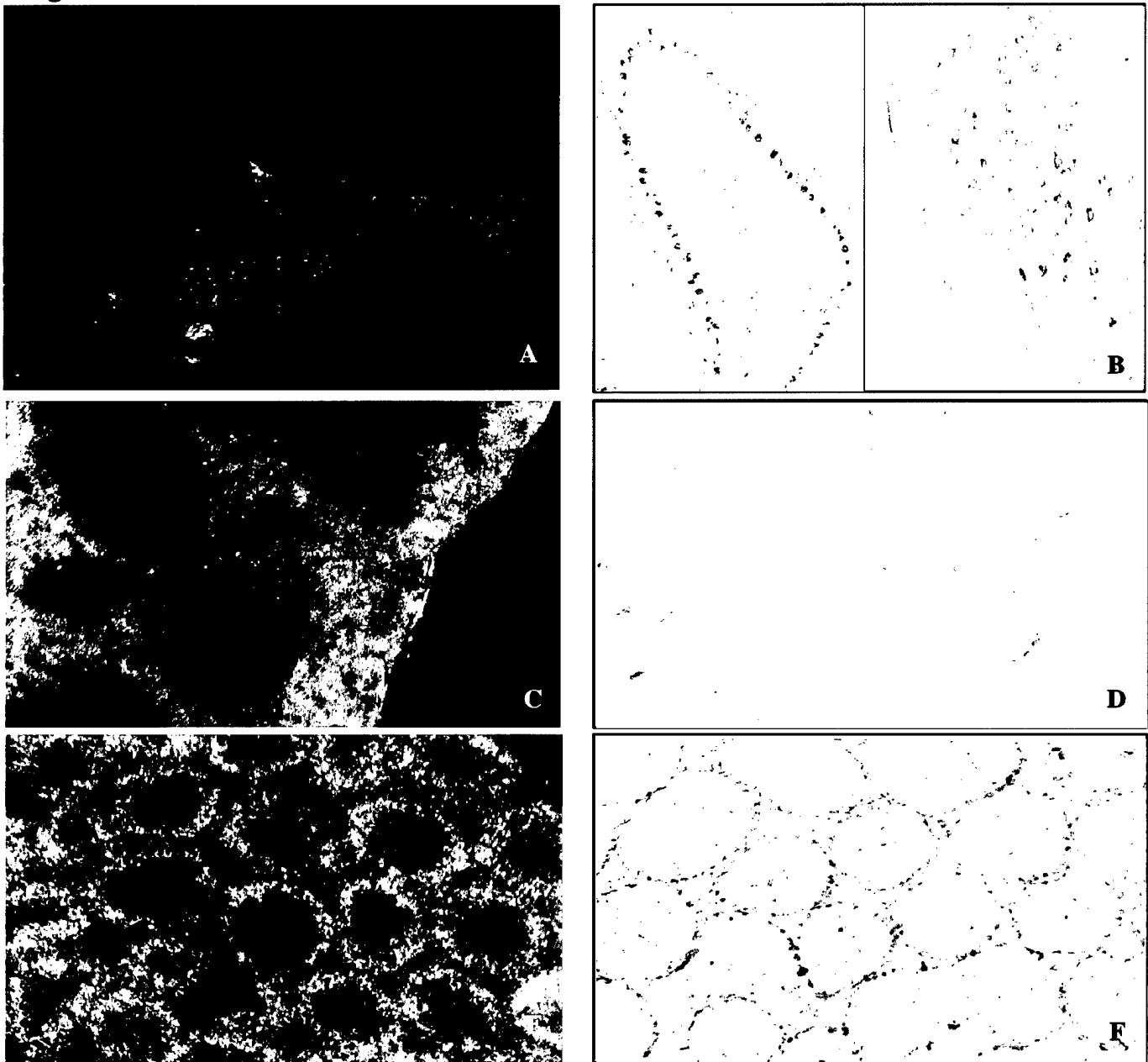


**Figure 1.** Immunohistochemical analysis of paraffin sections of cerebellum using antisera from a patient with paraneoplastic cerebellar degeneration (PCD). A. Cerebellum of a patient with PCD (corresponding to Tumor 3 in Figure 2) showing complete lack of reactivity with biotinylated PCD antisera and the absence of Purkinje neurons. B. Cerebellum of a neurologically normal patient demonstrating anti-Yo reactivity within the Purkinje cell cytoplasm.

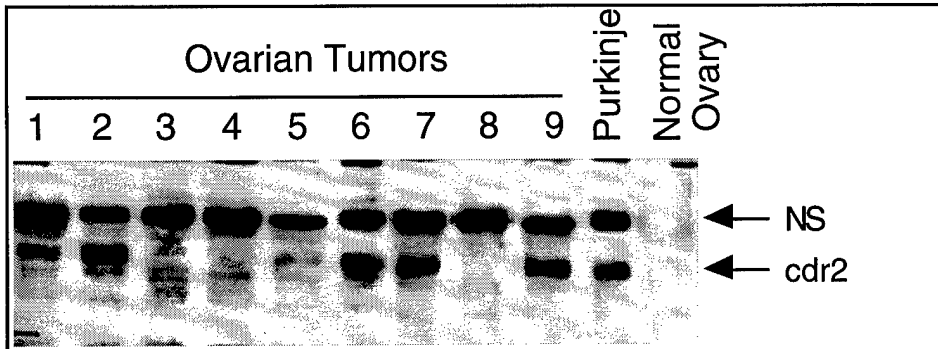
**Figure 2**



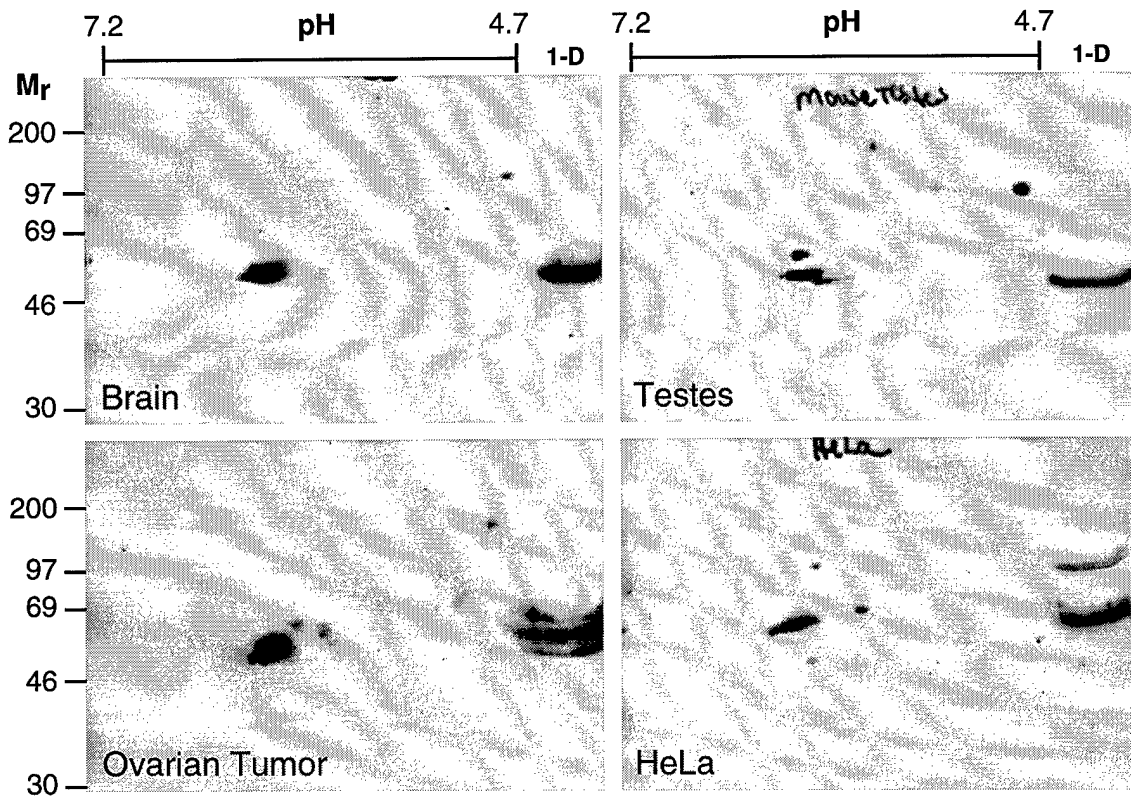
**Figure 3**



**Figure 3. Comparison of *cdr2* mRNA and protein expression.** Frozen sections of adult mouse brain (A-B), spleen (C-D) or testes (E-F) were assessed for *cdr2* mRNA expression by *in situ* hybridization (A, C, E) or protein expression by immunohistochemistry (B, D, F). For *in situ* hybridization slides were incubated with a 3' UTR *cdr2* antisense riboprobe and imaged under darkfield. Specific reactivity was seen in cerebellar Purkinje and brainstem neurons (A), splenic cortical cells (C) and spermatogonia in testes (E). No reactivity was evident with a *cdr2* sense probe. For immunohistochemistry, affinity purified antibody to *cdr2* reacted to each tissue showed staining only to Purkinje and brainstem neurons (B) and spermatogonia (F).



**Figure 4. Western blot analysis of cdr2 expression in human ovarian tumors.** Protein extracts from 9 human ovarian tumors were run on Western blots and probed with biotinylated affinity purified PCD antibody. Strong cdr2 reactivity was evident in tumors 1, 2, 6, 7 and 9, as well as in extracts of human Purkinje neurons; there was no reactivity with a protein extract of normal human ovary. Reprobing the blot with an anti-tubulin antibody showed equal immunoreactive protein in each lane (including normal ovary; data not shown). A non-specific (NS) band was present in Purkinje extracts and ovarian tumors that reacted with streptavidin-peroxidase secondary alone (data not shown).



**Figure 5. IEF/SDS-PAGE analysis of cdr2 expression.** An immunoreactive band of identical Mr and pI is present in each indicated tissue. Extraneous cross reactive bands seen in standard SDS gels (1-D, as indicated) using HeLa or ovarian tumor extracts do not resolve on IEF. Identical results were obtained with human Purkinje cell extracts and affinity purified cdr2 antibody (data not shown).