

REPORT DOCUMENTATION PAGE

Form Approved OMB No. 0704-0188

Public reporting burden for this collection of information is estimated to average 1 hour per response, including the time for reviewing instructions, searching existing data sources, gathering and maintaining the data needed, and completing and reviewing the collection of information. Send comments regarding this burden estimate or any other aspect of this collection of information, including suggestions for reducing this burden to Washington Headquarters Services, Directorate for Information Operations and Reports, 1215 Jefferson Davis Highway, Suite 1204, Arlington, VA 22202-4302, and to the Office of Management and Budget, Paperwork Reduction Project (0704-0188), Washington, DC 20503.

1. AGENCY USE ONLY (Leave blank)		2. REPORT DATE Oct 97	3. REPORT TYPE AND DATES COVERED Final Report	
4. TITLE AND SUBTITLE Study Of The Coupling Efficiencies Of Advanced X-Ray Sources Of Gamma-Ray Laser Media			5. FUNDING NUMBERS F6170896w0276	
6. AUTHOR(S) Prof. Ion Popescu				
7. PERFORMING ORGANIZATION NAME(S) AND ADDRESS(ES) Institute of Atomic Physics -IFTAR P.O. box MG-6 Bucharest, Magurele 76900 Romania			8. PERFORMING ORGANIZATION REPORT NUMBER N/A	
9. SPONSORING/MONITORING AGENCY NAME(S) AND ADDRESS(ES) EOARD PSC 802 BOX 14 FPO 09499-0200			10. SPONSORING/MONITORING AGENCY REPORT NUMBER SPC 96-4076	
11. SUPPLEMENTARY NOTES				
12a. DISTRIBUTION/AVAILABILITY STATEMENT Approved for public release; distribution is unlimited.			12b. DISTRIBUTION CODE A	
13. ABSTRACT (Maximum 200 words) This report results from a contract tasking Institute of Atomic Physics -IFTAR as follows: The contractor will investigate advanced X-Ray sources for possible use in X-Ray schemes. In order to complete this task the contractor will perform a literature search to identify appropriate X-Ray sources. He will then develop sc to adapt these sources to available pulsed-Power generators. Each scheme will be analyzed to determine the critical parameters which limit performance.				
DTIC QUALITY INSPECTED 4				
14. SUBJECT TERMS Pulsed Power			15. NUMBER OF PAGES 4	
			16. PRICE CODE N/A	
17. SECURITY CLASSIFICATION OF REPORT UNCLASSIFIED	18. SECURITY CLASSIFICATION OF THIS PAGE UNCLASSIFIED	19. SECURITY CLASSIFICATION OF ABSTRACT UNCLASSIFIED	20. LIMITATION OF ABSTRACT UL	

AQ

**Institute of Atomic Physics
National Institute for Laser, Plasma and Radiation Physics**

P.O. Box MG-36, Bucharest, ROMANIA, Fax: 40-1-4231701

SPC 96-4076

TO: Dr. Martin STICKLEY
European Office of Aerospace Research and Development
223/231 Old Marylebone Rd.
London NW1 5TH, United Kingdom
Fax: 44-171-514-4960/ 44-171-514-3126
mstickley@eoard.af.mil

FROM: Prof. Ioan Iovitz POPESCU
Institute of Atomic Physics
National Institute for Laser, Plasma and Radiation Physics
Low Temperature Plasma Department (Lab. 26)
P.O.Box MG-36, Magurele, Bucharest, ROMANIA
Fax: 40-1-4231701
E-mail: icige@roifa.ifa.ro

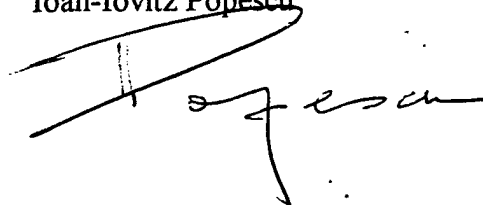
Dear Dr. Sticklely,

Please find enclosed a copy of my final report on **STUDY OF THE COUPLING EFFICIENCIES OF ADVANCED X-RAY SOURCES OF GAMMA-RAY LASER MEDIA**, contract F61708-96-W0276.

I will be very grateful if you would confirm me the receive of this report.

Yours most sincere

Ioan-Iovitz Popescu



19971209 032

Phase 1 Basic Research on Induced Gamma Emission (IGE)

Contract F61708-96-W0276

Final report

Submitted by: Ioan-Iovitz POPESCU
Professor

Address: Institute of Atomic Physics
National Institute for Laser, Plasma and Radiation Physics
Low Temperature Plasma Department
P.O.Box MG-36, Bucharest, ROMANIA
Fax: 40-1-4231701, E-mail: icige@roifa.ifa.ro

Title of Research: **STUDY OF THE COUPLING EFFICIENCIES OF
ADVANCED X-RAY SOURCES OF GAMMA-RAY
LASER MEDIA**

The production of pulsed intense electron beams in table top devices is important for the development of compact intense X-ray sources. Perhaps one of the most dynamic development in this direction was achieved by using high voltage transient discharges in gases. Since the electron generation, electron acceleration and self-focused beam propagation are intimately correlated in the frame of a common mechanism, these devices are very compact.

The pseudospark [1], the channel-spark [2], and more recently, the preionization controlled open ended hollow cathode configuration (PCOHC) transient discharge device [3-5] are among such devices the most advanced. The typical parameters of the electron beams produced in these devices are: beam current of 100 A - 1 kA, beam duration of 10 - 100 ns, electron energy in the range of a few keV to the energy corresponding to the maximum applied voltage (10 - 30 kV), beam diameter of about 1 mm, power density of $10^8 - 10^9$ W/cm² and repetition rate of tens of Hz.

In a PCOHC device the main high voltage discharge takes place between an open ended hollow cathode 30 mm in diameter, and a plane anode [6-8]. In the multielectrode configuration, there are in addition five plane electrodes each 2 mm thick, with 2 mm central bore holes, separated by disk shaped insulators each 3 mm thick, with 10 mm bore holes (Fig.1).

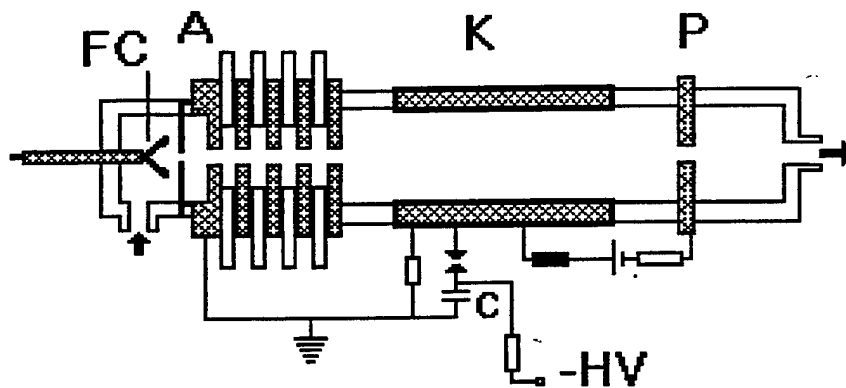


Figure 1. PCOHC geometry with multielectrode configuration, electrical circuit and device for beam current measurements (FC - Faraday cup; A - anode; K - open ended hollow cathode; P - preionization electrode; C - external capacitor; HV - high voltage supply).

The first 4 electrodes are floating and the last one is connected to the external capacitor (0.5 - 2 nF), playing the role of the anode. A spark-gap in the selfbreakdown mode was used to close the main discharge circuit. In most experiments, the working gas was air at pressure in the range 0.05 - 0.3 torr. For a given pressure and geometry, there is an optimum preionization current that matches the electron beam parameters. The geometry and implicitly the self capacitance of the electrode configuration have a direct and important influence on the fast electron beam parameters.

In Figure 2 typical electron beam currents (fast and total) are presented for single gap (Fig.2b) and multigap configurations (Fig.2a).

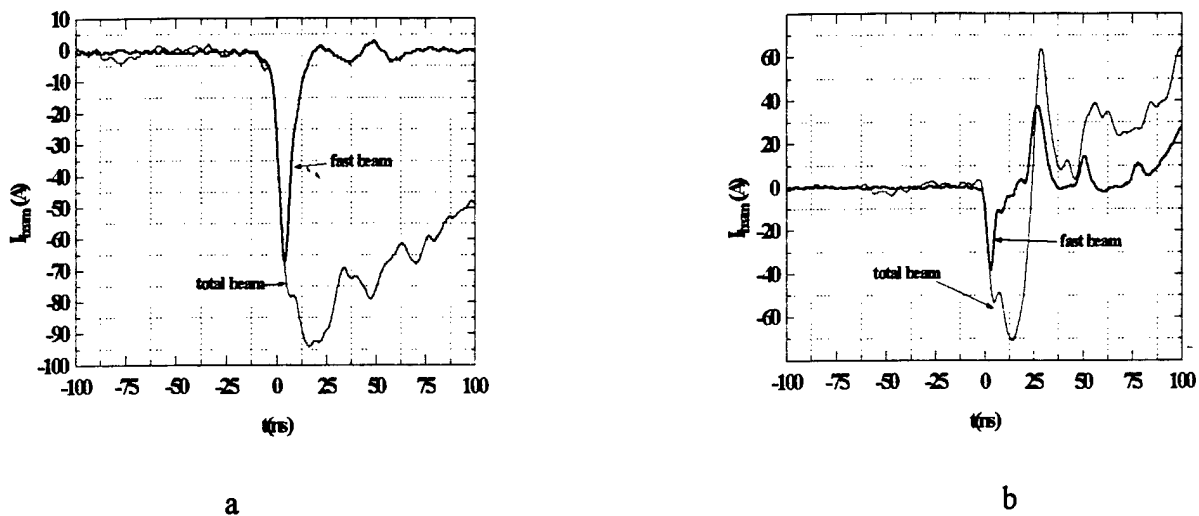


Figure 2. Fast and total beam currents for similar applied voltages (22 kV maximum applied voltage, 75 ns FWHM) in multigap (a) and single gap (b) configurations; working gas: air (0.1 - 0.3 mbar), D.C. auxiliary discharge of 0.25 mA (a) and 1 mA (b).

The beam currents were obtained for similar voltage pulses (22 kV breakdown voltage and 75 ns FWHM). The multigap fast beam current has a maximum value of 80 A, larger than the one obtained in the single gap configuration (40 A). The maximum total beam current is also increased in the multigap configuration (100 A) in comparison with the one obtained in the single gap configuration (75 A).

In PCOHC with multielectrode geometry we realized the beam parameters obtained in the pseudospark under similar conditions of input energy, gas pressure and diameter of the electrode bore holes. It is very interesting to note that, even though the maximum discharge current and its oscillation period depend on the value of the external capacitor (from $I = 375$ A for $C = 0.5$ nF to $I = 750$ A for $C = 2$ nF), the maximum beam currents (total and fast) are practically the same for each value of the external capacitor between 0.5 and 2 nF (Fig. 3a and 3b). The slow decreasing of the total beam current for an oscillating form of the discharge current was either attributed to a diffusion of the electron current of the discharge through the anodic aperture [9], or to a beam induced plasma formation in the drift tube [10].

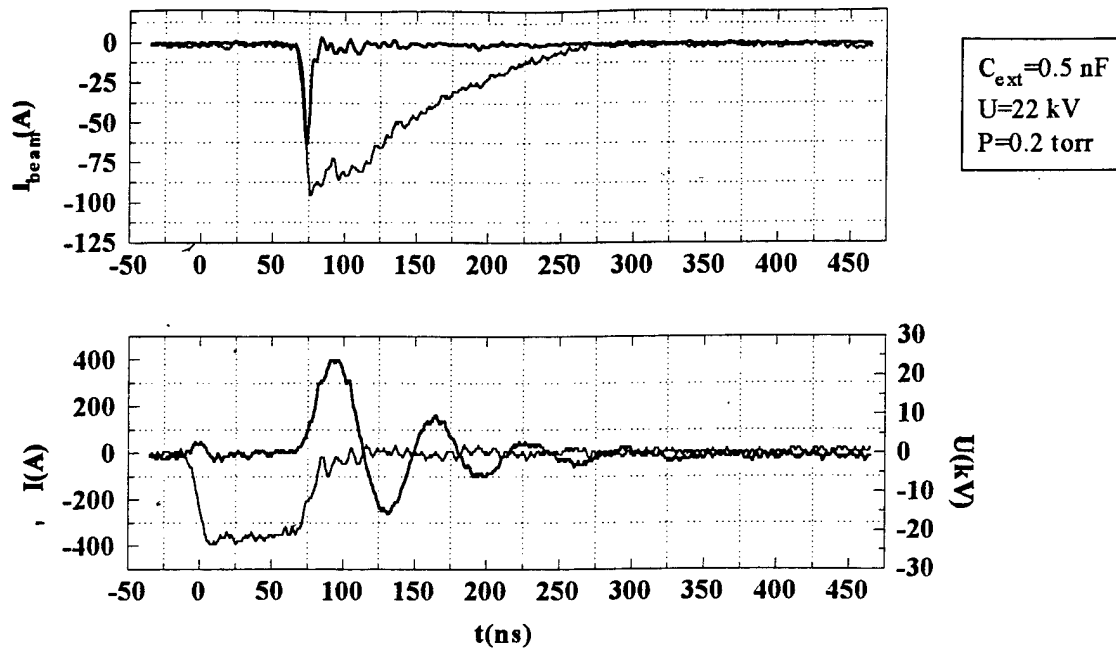


Figure 3. a) Typical oscillograms for the fast beam current, total beam current, discharge current and discharge voltage for $C = 0.5$ nF.

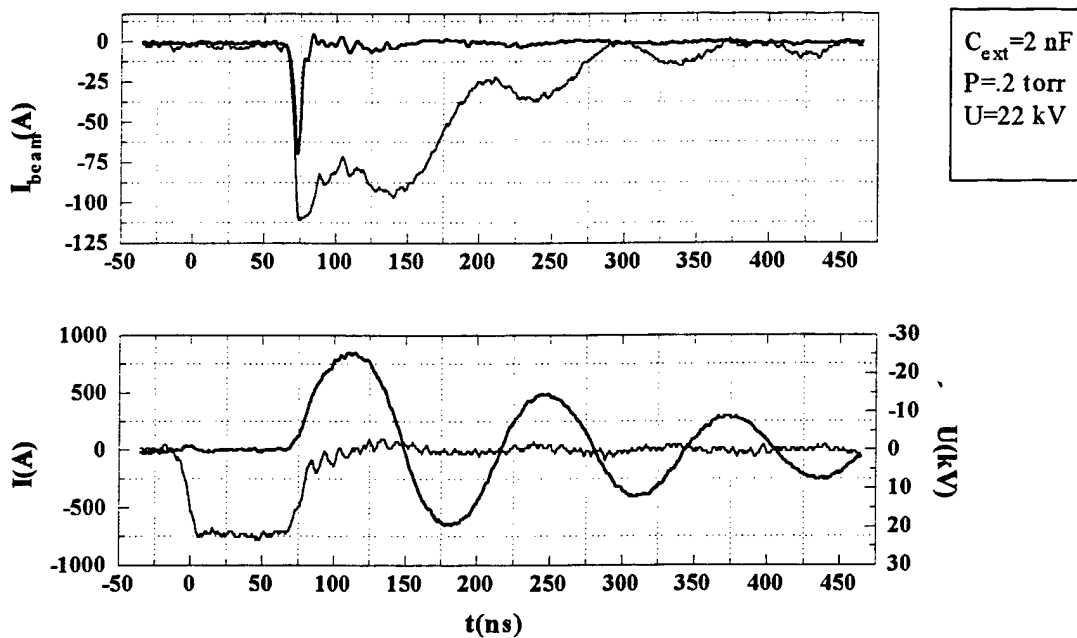


Figure 3. b) Typical oscillograms for the fast beam current, total beam current, discharge current and discharge voltage for $C = 2$ nF.

The PCOHC, which has an open ended hollow cathode, can also be used with a dielectric cathode [3]. In this case, the later phases of the discharge, which appear after the electron beam phase, are strongly suppressed. That means a longer life time for the cathode,

which is not damaged by the high currents concentrated in small spots, characteristic to the later phases of the discharge.

The geometry of the cathode and the presence of the small current (few mA) preionization discharge, which assures a constant number of charge carriers for the main discharge (400 - 800 A), determine a high reproducibility in the electron beam parameters from one shot to another. Apart from the measurements made with the Faraday cup, the most reliable measurements on the reproducibility of the high energy electron beam were realized by recording the X-ray emission from the interaction of the electron beam with a thin Al foil (25 μm). The X-ray pulses were recorded with a fast scintillator-PM system; the peak values were reproducible in 20% and the FWHM in less than 5%.

The X-ray source diameter, meaning the diameter of the high energy electron beam, was estimated from X-ray pinhole measurements. The pinhole was made of Pb and had a 0.1 mm diameter. Due to the foil absorption, only radiation with energies higher than approximately 5 keV was measured. After about 10,000 shots the diameter of the spot recorded on the X-ray film was only about 0.4 mm. This measurement provides a clear information on the high spatial stability of the beam.

In this way one can obtain intense point-like X-ray sources strongly coupled with the material to be irradiated; in the extreme case the material itself can be the target for the electron beam. Hence, these nanosecond, intense, point-like sources can be attractive for fundamental studies concerning the induced gamma emission in small quantities of isomers.

REFERENCES

- [1] J. Christiansen and C. Schultheiss, *Z. Phys.*, vol. A290, (1979) 35
- [2] F. Hoffman, M. Konijnenberg, C. Schultheiss, M. Schwall, K. Mittag, G. Muller, *KfK-Nachr. Jahrg.*, **254**, (1992) 254
- [3] M. Ganciu, G. Modreanu, A. M. Pointu, I.-Iovitz Popescu, *J. Phys. D: Appl. Phys.* **27**, (1994) 1370
- [4] M. Ganciu, A. M. Pointu, I. I. Popescu, N. B. Mandache, V. Zoran, *Rom. Journ. Phys.*, **40**, 673 (1995)
- [5] M. Ganciu, A. M. Pointu, N. B. Mandache, I. Iovitz Popescu, *SPIE*, **2461**, 40 (1995)
- [6] N. B. Mandache, A. M. Pointu, E. Dewald, M. Nistor, M. Ganciu, G. Musa, and I.-Iovitz Popescu, *Plasma Sources Sci. and Techn.*, **6**, 1(1997)
- [7] E. Dewald, K. Frank, D. H. H. Hoffmann, R. Stark, M. Ganciu, N. B. Mandache, M. Nistor, A. M. Pointu and I.-Iovitz Popescu, *IEEE Trans. Plasma Sci.*, **25**, 272 (1997)
- [8] E. Dewald, M. Ganciu, N. B. Mandache, G. Musa, M. Nistor, A. M. Pointu, I. I. Popescu, K. Frank, D. H. H. Hoffmann, R. Stark, *IEEE Trans. Plasma Sci.*, **25**, 279 (1997)
- [9] K. K. Jain, E. Boggasch, M. Reiser and M. J. Rhee, *Phys. Fluids B* **2**, (1990) 2487
- [10] A. Niederlöhner, H. Grönn and H. Langhoff, *J. Phys. D: Appl. Phys.* **27**, (1997) 101.