

AD _____

GRANT NUMBER DAMD17-96-1-6287

TITLE: Gene Therapy Mediated Breast Cancer Immunity

PRINCIPAL INVESTIGATOR: Stephen Eck, M.D., Ph.D.
Heike Boxhorn

CONTRACTING ORGANIZATION: University of Pennsylvania
Philadelphia, PA 15104

REPORT DATE: September 1997

TYPE OF REPORT: Annual

PREPARED FOR: Commander
U.S. Army Medical Research and Materiel Command
Fort Detrick, Frederick, Maryland 21702-5012

DISTRIBUTION STATEMENT: Approved for public release;
distribution unlimited

The views, opinions and/or findings contained in this report are those of the author(s) and should not be construed as an official Department of the Army position, policy or decision unless so designated by other documentation.

19980116 155

DTIC QUALITY INSPECTED 3

REPORT DOCUMENTATION PAGE

Form Approved
OMB No. 0704-0188

Public reporting burden for this collection of information is estimated to average 1 hour per response, including the time for reviewing instructions, searching existing data sources, gathering and maintaining the data needed, and completing and reviewing the collection of information. Send comments regarding this burden estimate or any other aspect of this collection of information, including suggestions for reducing this burden, to Washington Headquarters Services, Directorate for Information Operations and Reports, 1215 Jefferson Davis Highway, Suite 1204, Arlington, VA 22202-4302, and to the Office of Management and Budget, Paperwork Reduction Project (0704-0188), Washington, DC 20503.

1. AGENCY USE ONLY (Leave blank)		2. REPORT DATE September 1997	3. REPORT TYPE AND DATES COVERED Annual (15 Aug 96 - 14 Aug 97)	
4. TITLE AND SUBTITLE Gene Therapy Mediated Breast Cancer Immunity			5. FUNDING NUMBERS DAMD17-96-1-6287	
6. AUTHOR(S) Stephen Eck, M.D., Ph.D. Heike Boxhorn				
7. PERFORMING ORGANIZATION NAME(S) AND ADDRESS(ES) University of Pennsylvania Philadelphia, PA 15104			8. PERFORMING ORGANIZATION REPORT NUMBER	
9. SPONSORING/MONITORING AGENCY NAME(S) AND ADDRESS(ES) Commander U.S. Army Medical Research and Materiel Command Fort Detrick, Frederick, Maryland 21702-5012			10. SPONSORING/MONITORING AGENCY REPORT NUMBER	
11. SUPPLEMENTARY NOTES				
12a. DISTRIBUTION / AVAILABILITY STATEMENT Approved for public release; distribution unlimited			12b. DISTRIBUTION CODE	
13. ABSTRACT (Maximum 200) We sought to optimize the conditions under which B7-mediated gene transfer could effect anti-tumor immunity. Transduction of murine mammary carcinoma cell lines and human breast cancer cell lines with adenoviruses expressing B7-1 led to high levels of B7 expression. The expression of mB7-1 on melanoma cells but not mammary carcinoma cells results in reduced growth rate. Interestingly, adenovirus-mediated expression of mB7-1 on mammary carcinoma cells did not result in a reduced tumor growth rate. Furthermore, adenovirus-mediated expression of hB7 on breast cancer cells (e.g. MCF-7 or MCF-10 cells) did not lead to co-stimulation of allogeneic T cells <i>in vitro</i> . However, expression of B7-1 on human melanoma cells could confer to co-stimulatory functions. This suggests that tumor derived factors may play a direct role in limiting the immune response to breast cancer cells. We have shown that some human breast cancer cell lines produce soluble factors which inhibit the proliferative response of human T cells. We showed that TGFβ produced by MCF-7 cells does not account for the observed immune suppressive activity. Production of PGE ₂ appears to play a significant role. The treatment of MCF-7 cells with indomethacin partially alleviates the inhibitory effect. These results suggest that immunotherapy using intratumoral injection of Ad.hB7-1 may require other pharmacological measures for being effective for the treatment of breast cancer patients.				
14. SUBJECT TERMS Breast Cancer adenovirus, B7, T cell, immunity, gene therapy			15. NUMBER OF PAGES 28	
17. SECURITY CLASSIFICATION OF REPORT Unclassified			18. SECURITY CLASSIFICATION OF THIS PAGE Unclassified	
19. SECURITY CLASSIFICATION OF ABSTRACT Unclassified			20. LIMITATION OF ABSTRACT Unlimited	

FOREWORD

Opinions, interpretations, conclusions and recommendations are those of the author and are not necessarily endorsed by the U.S. Army.

____ Where copyrighted material is quoted, permission has been obtained to use such material.

____ Where material from documents designated for limited distribution is quoted, permission has been obtained to use the material.

____ Citations of commercial organizations and trade names in this report do not constitute an official Department of Army endorsement or approval of the products or services of these organizations.

X In conducting research using animals, the investigator(s) adhered to the "Guide for the Care and Use of Laboratory Animals," prepared by the Committee on Care and Use of Laboratory Animals of the Institute of Laboratory Resources, National Research Council (NIH Publication No. 86-23, Revised 1985).

____ For the protection of human subjects, the investigator(s) adhered to policies of applicable Federal Law 45 CFR 46.

____ In conducting research utilizing recombinant DNA technology, the investigator(s) adhered to current guidelines promulgated by the National Institutes of Health.

____ In the conduct of research utilizing recombinant DNA, the investigator(s) adhered to the NIH Guidelines for Research Involving Recombinant DNA Molecules.

____ In the conduct of research involving hazardous organisms, the investigator(s) adhered to the CDC-NIH Guide for Biosafety in Microbiological and Biomedical Laboratories.

Heike Boxhorn 9/12/97
PI - Signature Date

Table of contents

Front Cover

Standard Form

Foreword

Table of Contents

Introduction

Body

 Materials and Method

 Results

 Discussion

 Recommendations in relation of the Statement of Work outlined in the proposal

Conclusions

References

Introduction

T cell activation requires both an antigen-specific and an antigen-nonspecific signal as described by the two signal model of lymphocyte activation [1-4]. The antigen-specific signal is provided by the interaction of the T cell receptor (TCR) with peptides presented in the Major Histocompatibility Complex (MHC). A secondary signal is generated by a co-stimulatory molecule interacting with its cognate ligand on T cells, CD28. The absence of a co-stimulus results in anergy and programmed cell death of T cells [3, 5-8]. B7-1 is restricted in its expression to cells that traditionally act as antigen presenting cells, such as dendritic cells, macrophages, activated B cells and peritoneal exudate cells [9]. It is also functionally expressed on activated T cells, which suggests a possible mechanism of T cell autocrine co-stimulation [10]. It has been proposed that human tumor cells engineered to express B7-1 can be used to elicit anti-tumor immunity [11-13]. Many investigators have shown that the expression of B7-1 on murine tumors results in tumor rejection (Coughlin 95, Chen 92, Townsend 93, Allison 92, Hodge 94, Baskar 90, Yang 95) and the induction of protective immunity [13-19]. However, the effectiveness of B7-1 expression appears to be limited by the immunogenicity of the tumor studied [11]. It has been proposed that tumor cells may escape immune mediated destruction by producing immunosuppressive factors, such as TGF β [20], IL-10 [21], prostaglandins [22], leukotrienes [23] and other factors [24-26]. Breast carcinomas produce prostaglandins, mainly PGE₂ [Watson, 1992 #35; Fulton, 1991 #21] and PGE₂ levels are elevated in malignant breast cancer tissues [27]. PGE₂ is a metabolite of the arachidonic acid pathway that is catalyzed by cyclooxygenase. It is known as a potent immunomodulator. The immunosuppressive effects of PGE₂ include the inhibition of T cell proliferation [28, 29], the inhibition of the differentiation of lymphokine activated killer cells (LAK), the suppression of natural killer cell (NK) activity [22, 30, 31], the downregulation of a humoral response [32] and the suppression of lymphokine production [33, 34]. In this study we show that PGE₂ but not TGF β , both produced by MCF-7 cells, can limit the efficiency of the B7-1 mediated induction of an anti-breast cancer immune response.

Materials and Method

Adenoviral transduction

Tumor cells (3×10^6 cells/100 mm dish) were transduced with Ad.hB7-1 or Ad.lacZ at a MOI of 100 in a total volume of 3.5 ml growth medium containing 2% FBS. The next day fresh growth medium was added and on day 3 transgene expression was confirmed by flow cytometry.

Flow cytometry

Analysis of the Ad.hB7-1 transduced cells by flow cytometry was performed using the BB-1/B7-1 mAb (Becton-Dickinson, CA) or a mIgG1 Isotype control followed by an goat anti-mouse IgG, FITC labeled (Sigma). Tumor cells transduced with Ad.mB7-1 were incubated with an anti-mCD80 (B7-1) antibody (Pharmingen) or a rat IgG2a Isoytype (Pharmingen) for 1 hour on ice followed by an FITC-labeled goat anti-rat IgG2a antibody. Flow cytometry of the Ad.lacZ transduced cells was carried out after incubation with FDG (fluorescein digalactosidase) (Molecular Probes) for 1 minute at 37°C followed by incubation on ice for 30 minutes.

Tumorigenicity study

Three days after *in vitro* transduction of the murine breast carcinoma cell line T2994 with Ad.mB7-1 or Ad.lacZ, Balb/c mice (Charles Rivers) were injected subcutaneously in the left flank with 1×10^6 untransduced or transduced T2994 cells (8 mice pre group). The animals were observed for tumor growth every other day and tumor sizes were monitored. Tumor volume was calculated as $(V=L \times W^2/2)$. As soon as a tumor reached a size of 1 cm in largest diameter the mice were euthanized. For the tumorigenesis study and re-challenge studies with the murine melanoma K1735 cells adenoviral transduction was performed at a MOI of 1000. Cells were harvested 3 days after transduction and injected subcutaneously into the right flank of C3H mice (1.0×10^6 cells/mouse, 10 mice/group). Mice injected with untransduced K1735 cells (1.0×10^6 cells/mouse, 10 mice) served as positive controls for tumor growth. Animals surviving to day 55 were re-challenged with 1.0×10^6 K1735 cells subcutaneously on the left flank. Naive mice injected with untransduced K1735 cells (1.0×10^6 cells/mouse, 5 mice) served as positive controls in the re-challenge experiments. The experiment was terminated on day 105.

Collecting conditioned medium (CM) from MCF-7 cells

MCF-7 cells (3×10^6 cells/100 mm dish) were cultured in 5 ml RPMI medium containing 10% heat inactivated FBS at 37°C in a for 24 hours. CM was collected, centrifuged to remove dead cells and stored in aliquots at -20°C. CM from MCF-7 cells used in the anti-TGF β thymidine assay was collected after 3 hours incubation of 3×10^6 MCF-7 cells in 5 ml serumfree RPMI medium.

Standard thymidine assay

Human mononuclear cells were obtained from peripheral blood by Ficoll density centrifugation (Pharmacia). The cells were plated at a concentration of 1×10^5 cells per well of a 96-well round bottom culture. Where indicated PHA (Sigma) was added at a concentration of 5 μ g/ml or phorbol-myristate acetate (PMA) (10 ng/ml) in combination with ionomycin (360 ng/ml) were added. PGE₂ (Fluka) and the pan-specific anti-TGF β neutralizing antibody (R&D Systems) were used in concentration indicated. Cells were cultured for 5 days, pulsed with 1 μ Ci thymidine and harvested 18 hours later in a scintillation counter. When tumor cells were used as stimulators, 1×10^6 tumor cells were treated with 100 μ g mitomycin C (Sigma) for 45 minutes 37°C in fresh RPMI-medium. Human T cells were purified from peripheral blood by negative selection using an monoclonal antibody mixture of mouse anti human CD14 (macrophages), CD16 (NK

cells), CD19 (on B cells) and MHC class II (L243 mAb) (gift from L. Turka, University of Pennsylvania) followed by incubation with BioMag goat anti mouse IgG magnetic beads (Perseptive Diagnostics). Tumor cells (2.5×10^4 cells/well) and human T cells (1×10^5 cells/well) were co-cultured for 5 days, pulsed with thymidine and harvested as described above.

Results

Transduction of the murine mammary carcinoma cell line T2994 and human breast cancer cell lines with Ad.mB7-1 and Ad.hB7-1 respectively, results in high level gene expression

The murine mammary carcinoma cell line T2994 does not express B7-1 in quantities that are detectable by flow cytometry (Figure 1). Upon transduction with Ad.mB7-1 or Ad.lacZ at an MOI of 100, greater than 82% of the T2994 cells expressed the transgene after three days. Similar results were obtained when the murine mammary carcinoma SCK cell line was transduced (data not shown). Human breast cancer cell lines MCF-7, MCF-10, BT-20, MDA MB-231 and BT-474 transduced with Ad.hB7-1 at an MOI of 100, results in B7-1 expression on at least 91% of the cells. None of these cells normally express hB7-1 in quantities detectable by flow cytometry. Thus, breast cancer cells can be readily transduced to express B7-1 at levels sufficient to allow T cell activation.

Tumorigenicity of the murine mammary carcinoma cell line T2994 transduced with Ad.mB7-1

We sought to compare the growth behavior of untransduced T2994 cells and Ad.mB7-1 transduced T2994 cells in immunocompetent mice. T2994 cells were transduced *in vitro* as discussed above. Cells were harvested 3 days after transduction and injected subcutaneously into the right flank of Balb/c mice. Mice injected with untransduced T2994 cells served as positive controls for tumor growth. The tumor incidence curve is shown in Figure 2. All the mice developed tumors by day 25. By day 40 the experiment was terminated due to the tumor mass. There was no significant difference of the tumor growth rate in the groups receiving transduced T2994 cells and untransduced tumor cells. Adenovirus-mediated expression of B7-1 on SCK cells resulted in a retardation of the tumor growth rate with all animals developing tumors at day (data not shown). In contrast, the murine melanoma K1735 cell line transduced with Ad.mB7-1 was rejected in immunocompetent mice. None of the mice developed tumors (Figure 3). Thus, we suggested that the observed difference in the ability of B7-1 to reduce the tumor growth rate between mammary carcinoma cells and melanoma cells was independent of co-stimulation.

MCF-7 and MCF-10 human breast cancer cells transduced with Ad.hB7-1 fail to co-stimulate allogeneic T cells

To test the hypothesis that adenoviral delivered B7-1 on tumor cells can co-stimulate human allogeneic T cell proliferation *in vitro*, we transduced the human breast cancer cell lines MCF-7 and MCF-10 with Ad.hB7-1. T cells co-cultured with B7-1 expressing MCF-7 did not proliferate (Figure 4). Similarly, the expression of B7-1 on MCF-10 cells also failed to induce proliferation of allogeneic T cells (data not shown); whereas, adenovirus mediated expression of B7-1 on the human melanoma cell line WM9 stimulated allogeneic T cells to proliferate (Figure 5). Thus, adenoviral delivered B7 on melanoma cells can provide co-stimulation but the breast cancer cells appear to be a poor substrate for B7-1 mediated T cell activation.

MCF-7 cells produce soluble factors which inhibit the proliferation of allogeneic T cells stimulated by WM9Ad.hB7-1 cells

The inability of MCF-7 cells transfected with Ad.hB7-1 to co-stimulate allogeneic T cells under conditions that worked for melanoma cells, suggested the possible presence of factors that inhibit T cell proliferation. Conditioned medium (CM) from MCF-7 cells was added to allogeneic T cells that were stimulated with the human melanoma cell line WM9 expressing B7-1 (see above). WM9 cells expressing hB7-1 were able to stimulate allogeneic T cells in the absence of MCF-7 supernatant; however, the proliferation was inhibited completely in a dose response manner by the addition of CM from MCF-7 cells

(Figure 6). This indicates that MCF-7 cells produce soluble factors that inhibit T cell proliferation under these conditions.

CM from MCF-7 cells inhibits the proliferation of human MN cells stimulated with PHA

The ability of CM from MCF-7 cells to inhibit the proliferation of T cells was tested when endogenous co-stimulatory signals were provided. Human mononuclear cells (MN) cells served as a source for B7 expressing antigen presenting cells and T cells. CM from MCF-7 cells was added to human MN cells stimulated with PHA. The addition of CM from MCF-7 cells blocked the proliferation of MN cells stimulated with PHA (Figure 7). This indicates that the inhibitory effect of CM from MCF-7 is effective even when endogenous antigen presenting cells are used for co-stimulation.

The inhibitory effect of CM from MCF-7 cells takes place downstream from co-stimulation and antigen recognition

To determine whether the inhibitory activity of the CM from MCF-7 cells is independent of co-stimulation, MN cells were stimulated with PMA/ionomycin. The inhibitory capacity of CM from MCF-7 cells was examined. Activated MN cells incorporated thymidine only in the absence of CM from MCF-7 cells. The inhibitory effect of CM from MCF-7 cells was dose-dependent (Figure 8). A dilution of 1:4000 of the CM from MCF-7 cells completely blocked the proliferation of stimulated T cells; whereas, the inhibitory activity of the CM was reduced at a dilution of 1:40000. Thus, co-stimulation was not required for the inhibition of the proliferation of MN cells by CM from MCF-7 cells.

The breast cancer cell lines MCF-10 and BT-474 produce soluble factors which inhibit the proliferative response of MN cells to PHA

Other breast cancer cell lines were examined for soluble factors that inhibit the proliferation of T cells. CM from MCF-10 cells, MDA-MB-231 cells, BT-474 cells, BT-20 cells, HBL 100 cells, T47D cells and SK-Br-3 were tested for their ability to inhibit the proliferation of MN cells stimulated with PHA. CM from MDA-MB-231 cells and BT-20 cells did not significantly alter the proliferation of stimulated MN cells (Figure 9). However, CM from MCF-10 cells and BT-474 cells inhibited the proliferation of MN cells in response to PHA to the same extent as the addition of MCF-7 supernatant. Thus, the production of soluble factors by breast cancer cells is a common but not universal finding.

TGF β does not account for the inhibitory effect of the CM from MCF-7 cells on the proliferation of MN cells in response to PHA

MCF-7 cells produce active TGF β which is known to block T cell activation. We tested if TGF β was responsible for the observed inhibitory effect of CM from MCF-7 cells. We found that 3×10^6 /5ml MCF-7 cells produced 578 pg/ml total TGF β (active and latent TGF β). MN cells were stimulated with PHA and treated with CM from MCF-7 cells containing anti-TGF β . The amount of the TGF β neutralizing antibody used was in excess of that needed to reduce both latent and active TGF β produced by MCF-7 cells as determined by a luciferase assay (data not shown). The proliferation of stimulated MN cells was inhibited by 1 μ l and 50 μ l of CM from MCF-7 cells (Figure 10). The addition of a TGF β pan-specific antibody did not reverse the inhibition of the proliferation of MN cells.

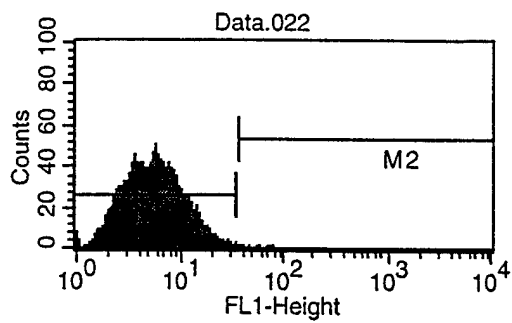
Prostaglandin E₂ (PGE₂) partially inhibits the proliferation of MN cells stimulated with PMA/ionomycin

MCF-7 cells have been shown to produce PGE₂. We investigated whether PGE₂ inhibits the proliferative response of mitogen-stimulated MN cells similarly to the observed inhibitory effect of CM from MCF-7 cells. Increasing amounts of PGE₂ (10 pg/ml to 10 μ g/ml) were added to PMA/ionomycin stimulated MN cells. There was a 23% inhibition of

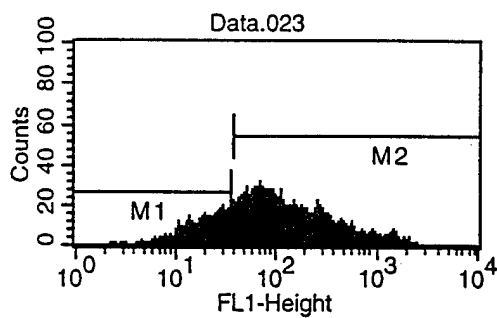
proliferation when PGE₂ was added at a concentration of 100 ng/ml PGE₂ and 51% inhibition when 10 µg/ml of PGE₂ was added (Figure 11). MCF-7 cells (3x10⁶ cells) produced 200 pg/ml PGE₂ per 24 hours as determined by mass spectrometry (data not shown). Therefore, MCF-7 produce PGE₂ in quantities that are sufficient to inhibit the proliferation of MN cells.

Indomethacin treatment of MCF-7 cells partially alleviates the immune suppressive effect of the CM from MCF-7 cells

To determine if the elimination of prostaglandin E₂ (PGE₂) in the CM of MCF-7 cells reversed its immune inhibitory capacity, MCF-7 cells were treated with the cyclooxygenase inhibitor indomethacin (100 µg/ml) for 24 hours in RPMI medium containing 10% heat inactivated FBS. The PGE₂ levels produced by the supernatants of untreated and indomethacin treated MCF-7 cells were added to PMA/ionomycin stimulated MN cells at different dilutions (1/40, 1/4000, 1/40000). CM from MCF-7 cells contained 40 pg/ml PGE₂ as determined by mass spectrometry. Indomethacin reduced the PGE₂ produced by MCF-7 cells to undetectable levels (data not shown). The high proliferation of PMA/ionomycin-stimulated MN cells was inhibited dramatically when MCF-7 supernatant was added at a dilution of 1/40 independent of indomethacin treatment (Figure 12). At a dilution of 1/4000, however, the supernatant of indomethacin treated MCF-7 cells reversed the inhibitory effect. The supernatant of untreated MCF-7 cells did not inhibit the proliferation of MN cells at a dilution of 1/40000. Indomethacin in the supernatant did not influence the response of MN cells to mitogen (data not shown).



untransduced



transduced with Ad.mB7-1

Figure 1: Transduction of the murine mammary carcinoma cell line T2994 with Ad.mB7-1. Tumor cells were transduced with and Ad.hB7-1 at a MOI of 100. Three days later B7-1 expression was determined by flow cytometry using an anti-mCD80 (B7-1) antibody and a rat IgG2a Isoytype. Greater than 82 % of the T2994 cells were positive for B7-1.

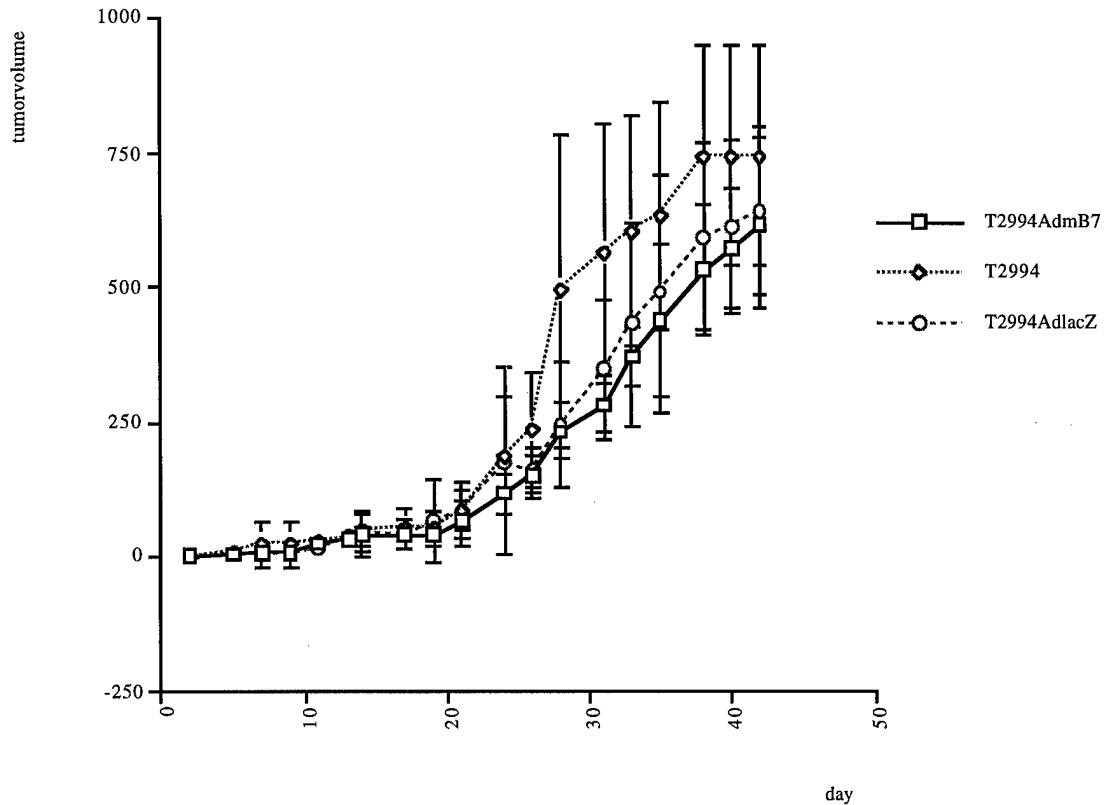


Figure 2: Tumorigenicity of the murine mammary carcinoma cell line T2994 transduced with Ad.mB7-1. Three days after in vitro transduction of the murine mammary carcinoma cell line T2994 with Ad.mB7-1 or Ad.lacZ, Balb/c mice were injected subcutaneously in the left flank with 1×10^6 untransduced or transduced T2994 cells (8 mice per group). The animals were observed for tumor growth every other day and tumor sizes were monitored. Tumor volume was calculated as $(V=L \times W^2/2)$. As soon as a tumor reached a size of 1 cm in largest diameter the mice were euthanized. There was no significant difference of the tumor growth rate in the groups receiving untransduced and transduced T2994 cells.

K1735 Live Challenge

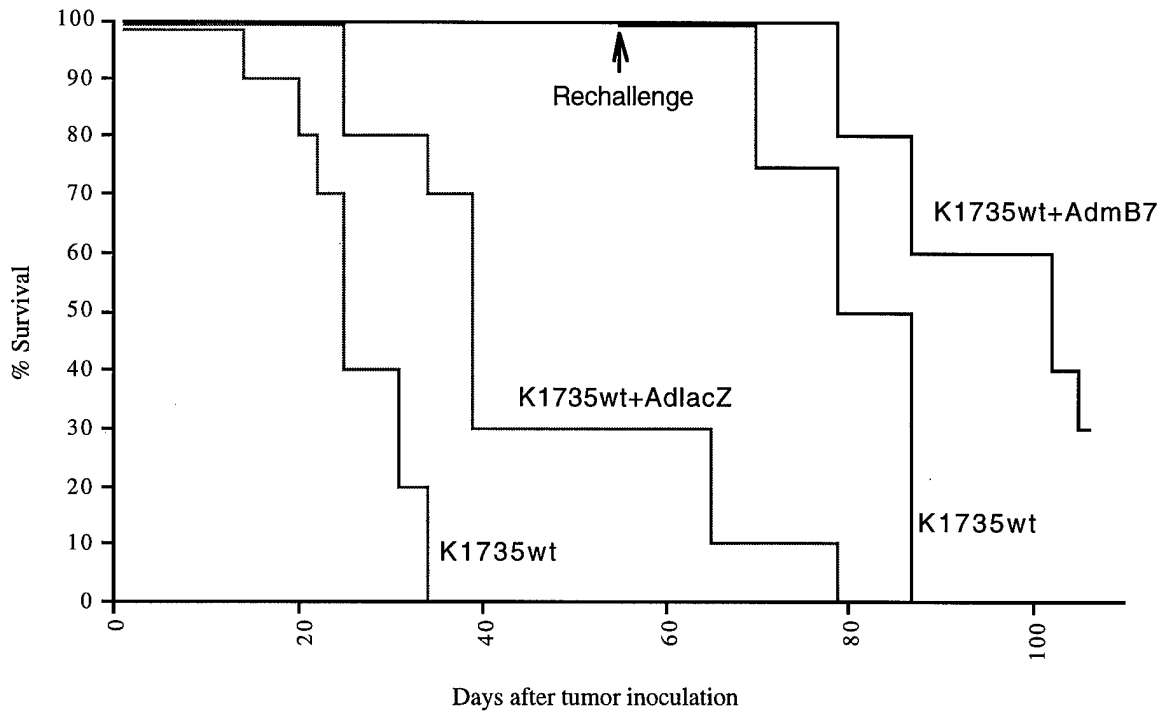


Figure 3: Survival of mice injected with the murine melanoma cell line K1735 transduced with Ad.mB7-1 and re-challenged with parental tumor cells. Untransduced and transduced cells were harvested 3 days after transduction and injected subcutaneously into the right flank of C3H mice (1.0×10^6 cells/mouse, 10 mice/group). Mice injected with untransduced K1735 cells (1.0×10^6 cells/mouse, 10 mice) served as positive controls for tumor growth. Animals surviving to day 55 were re-challenged with 1.0×10^6 K1735 cells subcutaneously on the left flank. Naive mice injected with untransduced K1735 cells (1.0×10^6 cells/mouse, 5 mice) served as positive controls in the re-challenge experiments. The experiment was terminated on day 105. None of the mice receiving K1735 cells transduced with Ad.mB7-1 developed tumors.

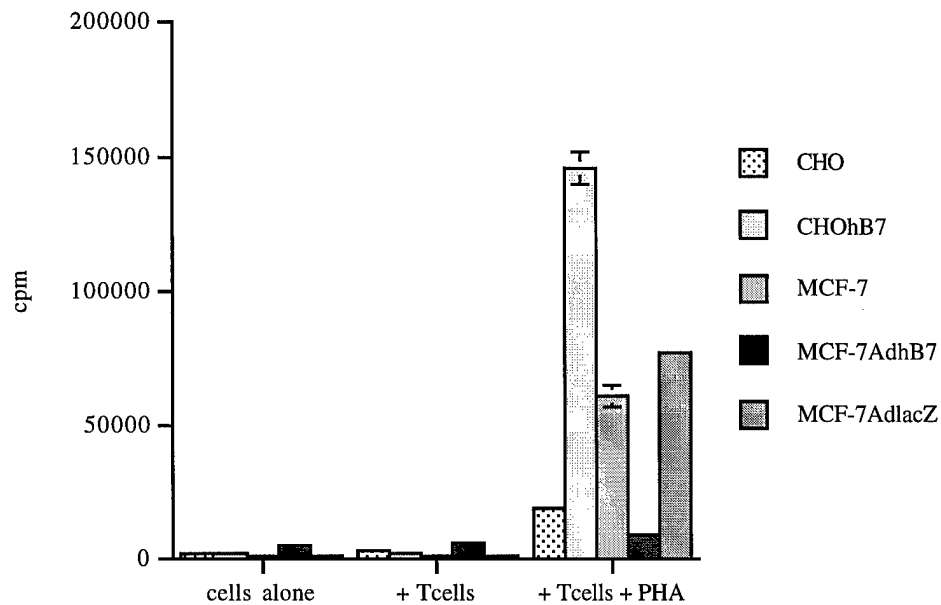


Figure 4: MCF-7 human breast cancer cells transduced with Ad.hB7-1 fail to co-stimulate allogeneic T cells. Three days after the transduction of MCF-7 cells with Ad.hB7-1 or Ad.lacZ, cells were mitomycin C treated. Untransduced and transduced cells (2.5×10^5 cells/well) were co-cultured with human allogeneic T cells (1×10^5 cells/well) for 5 days. PHA was added at a concentration of $5 \mu\text{g/ml}$. Cells were pulsed with thymidine for 18 hours before harvesting in a scintillation counter. T cells co-cultured with B7-1 expressing MCF-7 cells did not proliferate.

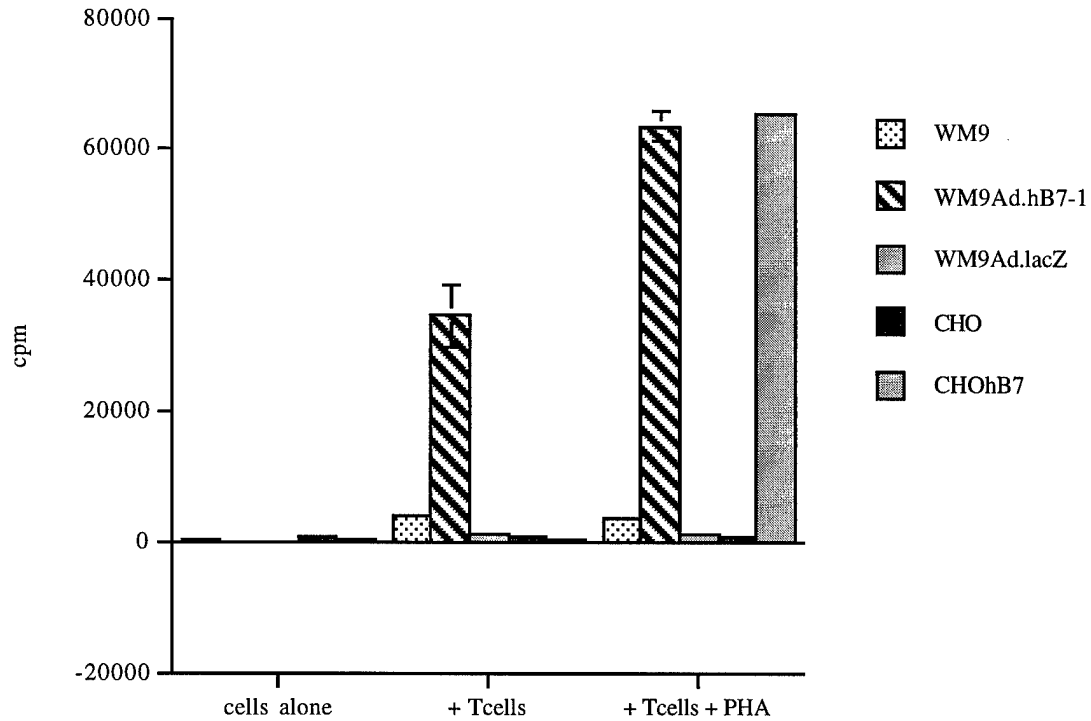


Figure 5: The human melanoma cell line WM9 transduced with Ad.hB7-1 co-stimulates allogeneic T cells. Three days after the transduction of WM9 cells with Ad.hB7-1 or Ad.lacZ, cells were mitomycin C treated. Untransduced and transduced cells (2.5×10^5 cells/well) were co-cultured with human allogeneic T cells (1×10^5 cells/well) for 5 days. PHA was added at a concentration of $5 \mu\text{g/ml}$. Cells were pulsed with thymidine for 18 hours before harvesting in a scintillation counter. The adenovirus-mediated expression of hB7-1 on the human melanoma cell line WM9 stimulated allogeneic T cells to proliferate.

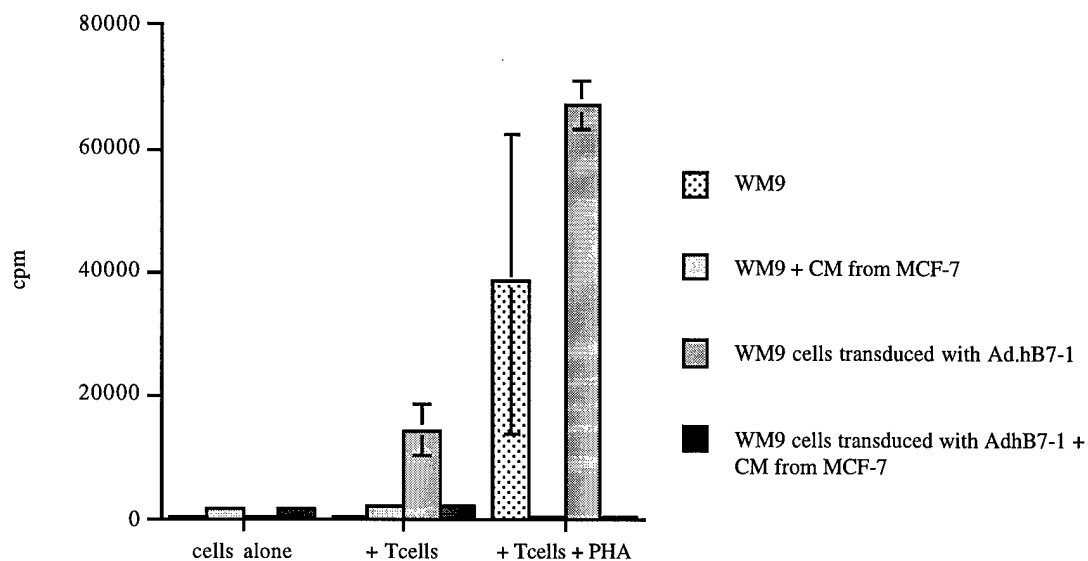


Figure 6: Addition of CM from MCF-7 cells to T cells stimulated by WM9 cells transduced with Ad.hB7-1. Three days after the transduction of WM9 cells with Ad.hB7-1 or Ad.lacZ, cells were mitomycin C treated. Untransduced and transduced cells (2.5×10^5 cells/well) were co-cultured with human allogeneic T cells (1×10^5 cells/well) for 5 days. PHA was added at a concentration of $5 \mu\text{g/ml}$. CM from MCF-7 cells was added ($50 \mu\text{l}$) at the initiation of the co-cultures. Cells were pulsed with thymidine for 18 hours before harvesting in a scintillation counter. MCF-7 cells produce soluble factors which inhibit the proliferation of T cells stimulated by WM9Ad.hB7-1 cells.

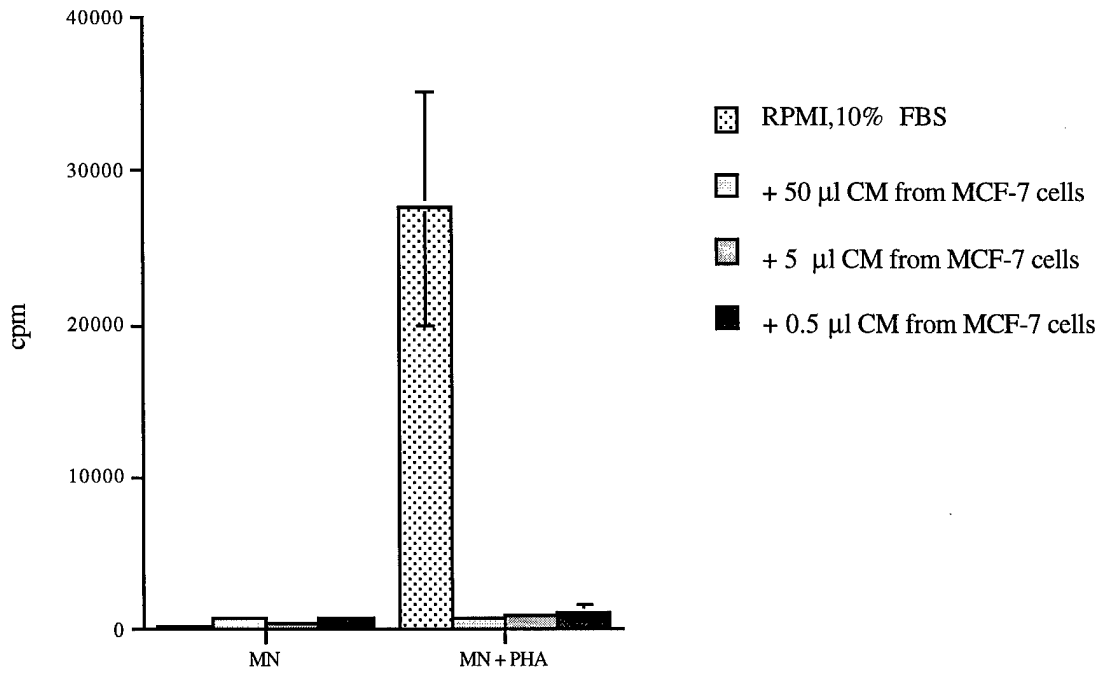


Figure 7: Addition of CM from MCF-7 cells to MN cells stimulated with PHA. Human MN cells (1×10^5 cells/well) were cultured in 96-well-plates for 5 days. PHA was added at a concentration of $5 \mu\text{g/ml}$. CM from MCF-7 cells was added at the initiation of the culture. Cells were pulsed with thymidine and harvested in a scintillation counter. CM from MCF-7 cells inhibits the proliferation of MN cells stimulated by PHA.

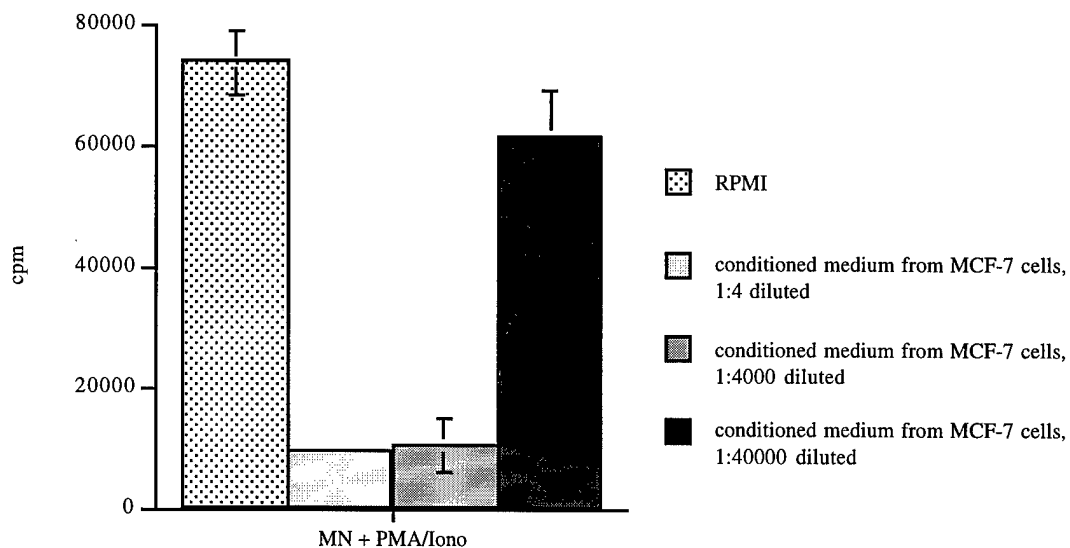


Figure 8: Addition of CM from MCF-7 cells to MN cells stimulated with PMA/ionomycin. Human MN cells (1×10^5 cells/well) were cultured in 96-well-plates for 5 days. PMA (10 ng/ml) and ionomycin (360 ng/ml) were added where indicated. CM from MCF-7 cells was added at the initiation of the culture. Cells were pulsed with thymidine and harvested in a scintillation counter. CM from MCF-7 cells inhibits the proliferation of MN cells stimulated by PHA. The inhibitory effect of CM from MCF-7 cells takes place downstream from co-stimulation and antigen recognition.

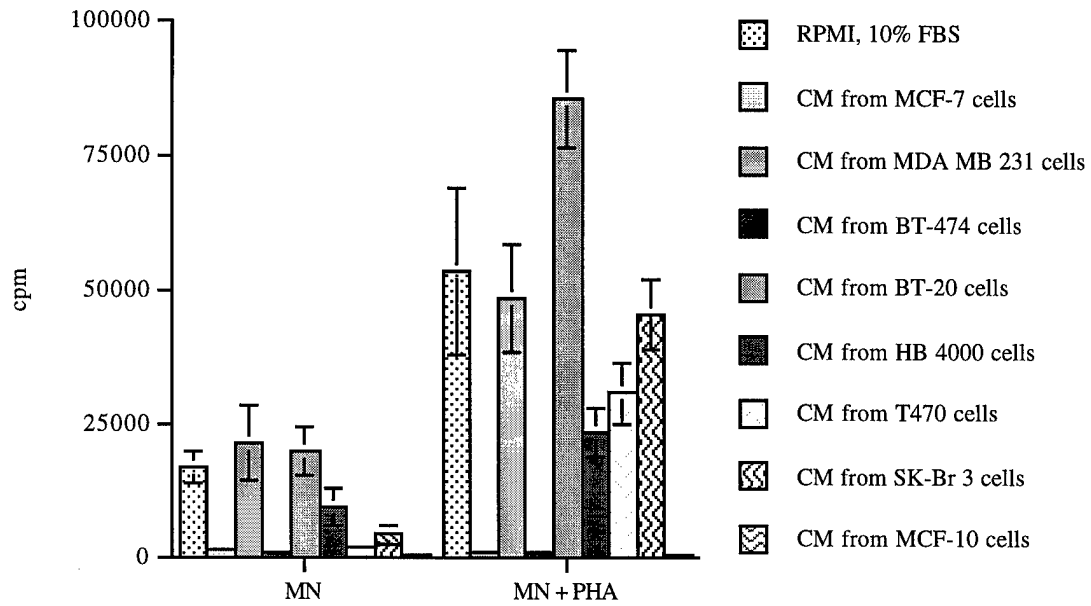


Figure 9: Addition of CM from different human breast cancer cells to MN cells stimulated with PHA. Human MN cells (1×10^5 cells/well) were cultured in 96-well-plates for 5 days. PHA was added at a concentration of $5 \mu\text{g/ml}$. CM from different human breast cancer cells were added at the initiation of the culture. Cells were pulsed with thymidine and harvested in a scintillation counter. The breast cancer cell lines MCF-10 and BT-474 produce soluble factors that inhibit the proliferative response.

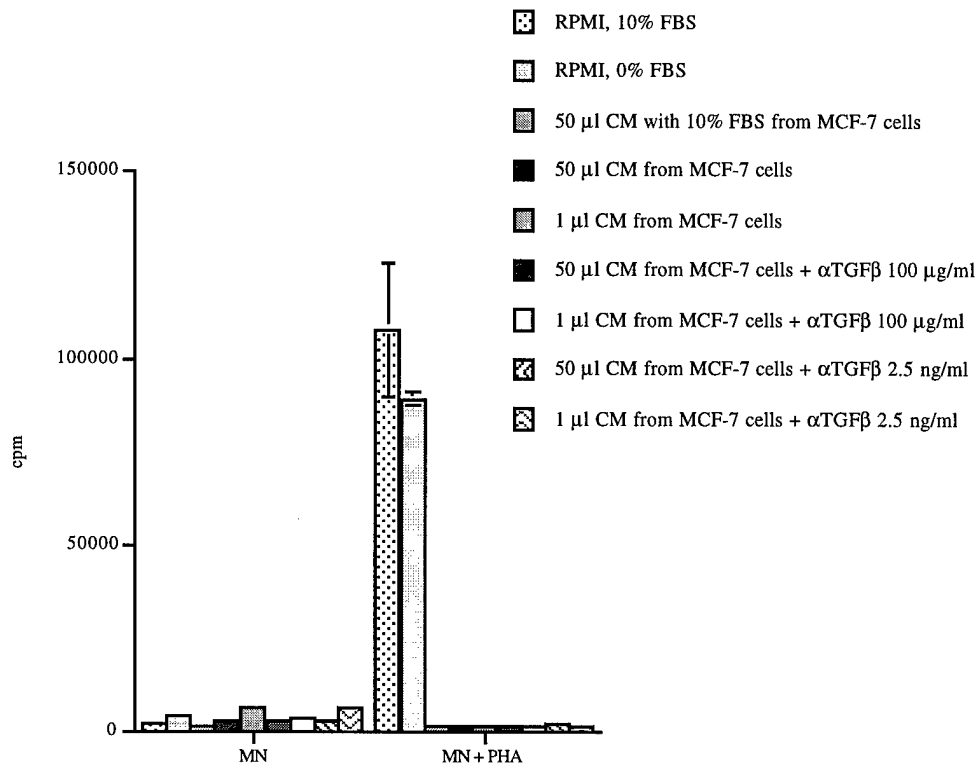


Figure 10: Testing the effect of CM from MCF-7 cells after incubation with an anti-TGFβ neutralizing antibody. Human MN cells (1×10^5 cells/well) were stimulated with PHA ($5 \mu\text{g/ml}$). CM from MCF-7 cells was obtained by incubating 3×10^6 cells in 5 ml of serumfree PRMI-medium for 3 hours. CM from MCF-7 cells were added at different dilutions in the presence or absence of a pan-specific TGFβ antibody (2.5 ng/ml or 100 µg/ml). Cells were pulsed with thymidine and harvested in a scintillation counter. TGFβ does not account for the inhibitory effect of the CM from MCF-7 cells.

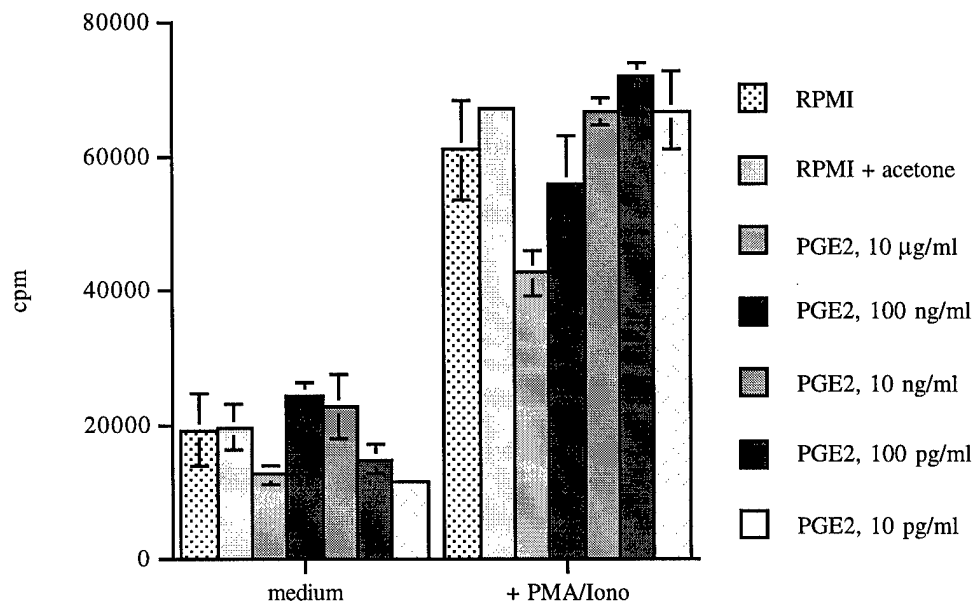


Figure 11: Addition of PGE₂ to MN cells stimulated by PMA/ionomycin. Human MN cells were stimulated with PMA (10 ng/ml) and ionomycin (360 ng/ml). PGE₂ was added at different concentrations ranging from 10 µg/ml to 10 pg/ml. PGE₂ partially inhibits the proliferation of MN cells stimulated with PMA/ionomycin.

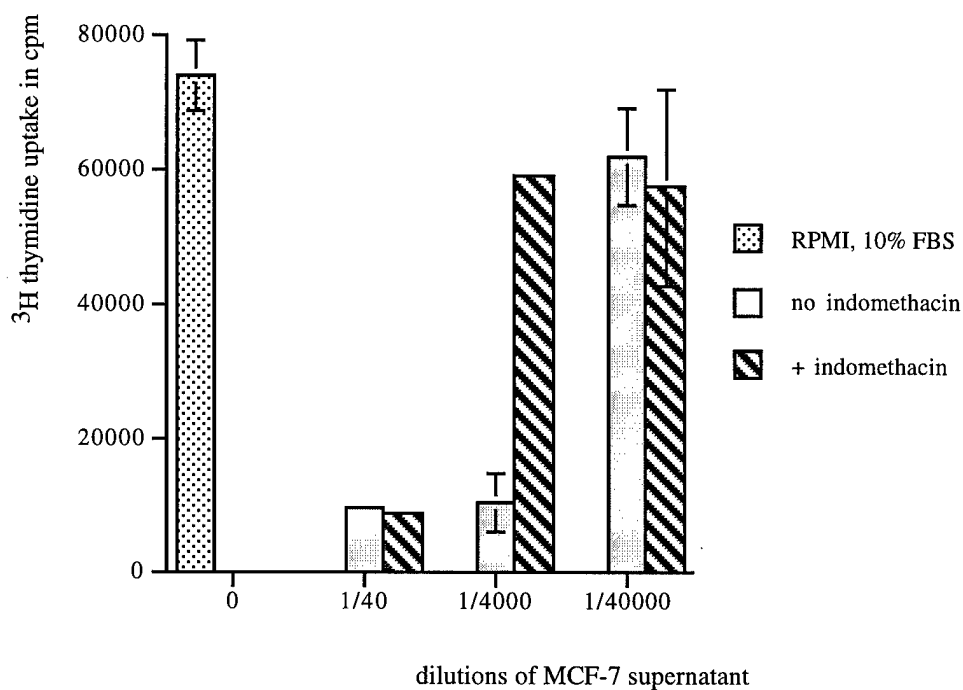


Figure 12: Testing the effect of CM MCF-7 cells treated with indomethacin. Human MN cells were stimulated with PMA (10 ng/ml) and ionomycin (360 ng/ml). MCF-7 cells were treated with indomethacin (100 $\mu\text{g}/\text{ml}$) for 24 hours. CM from untreated and indomethacin treated MCF-7 cells were added at the initiation of the culture. Cells were pulsed with thymidine and harvested in a scintillation counter. Indomethacin treatment of MCF-7 cells partially alleviates the immune suppressive effect of the CM from MCF-7 cells.

Discussion

This study was prompted by the findings from us and other investigators [13-19] that B7-1 expression can elicit an anti-tumor immune response. The efficacy of B7-mediated immunotherapy is depending on the tumor system studied. The outcome of a B7-induced anti-tumor immunity correlates with the immunogenicity of the tumor cells [11]. To confer these findings into a clinical application for breast cancer, efficient gene transfer *in vivo* is required. Adenoviral vectors are suitable vehicles to deliver B7-1 into human breast cancer cells because they transduce dividing and non-dividing cells and they yield high levels gene expression. We have shown that murine mammary carcinoma cells and human breast cancer cell lines are very susceptible to adenoviral transduction. Nevertheless, B7-1 expressing mammary carcinoma cells fail to induce an anti-tumor response *in vivo*. We hypothesized this failure may be in part due to the breast cancer cell derived immunosuppressive factor PGE₂.

PGE₂ is produced by a variety of tumors, including human breast cancer cells [35-37]. PGE₂ controls the growth of breast cancer cells in an autocrine fashion [38, 39]. However, there are conflicting data whether PGE₂ inhibits or promotes tumor cell replication [39, 40]. The effect of PGE₂ on tumor growth regulation is dependent of the stage of differentiation [41]. It has been shown that during mammary cancer progression the PGE₂ receptor is lost or altered resulting in advanced tumorigenesis. The inability of signal transduction through the PGE₂ receptor in advanced mammary tumors could explain the elevated levels of PGE₂ in tumor cells in a progressed stage of the disease [41]. Thus, the level of PGE₂ determines the stage of disease in breast cancer [27, 35]. Additionally, PGE₂ plays a role in mammary tumor metastasis [37]. The effects of PGE₂ in the immune system are mainly suppressive, although some immune stimulatory effects, such as the stimulation of Il-4 mediated class switch of B cells are described [42]. The immune suppressive functions of PGE₂ include the inhibition of T cell proliferation [28, 29], the inhibition of the differentiation of lymphokine activated killer cells (LAK), the suppression of natural killer cell (NK) activity [22, 30, 31], the downregulation of a humoral response [32] and the suppression of lymphokine production [33, 34]. We sought to demonstrate a direct effect of tumor derived PGE₂ on T cell activation. Indomethacin, an inhibitor of prostaglandin synthesis could not completely eliminate the immunosuppressive factors produced by the human breast cancer cell line MCF-7 suggesting the presence of other inhibitory factors. A number of immune inhibitory factors have been described, such as TGFβ, IL-10, leukotrienes and others. We are currently characterizing further immunosuppressive factors. We suggest that not only the expression of specific antigens, MHC molecules, co-stimulatory and accessory molecules on tumor cells but also the secretion of immunoregulatory molecules determines the immunogenicity of breast cancer cells.

Recommendations in relation to the Statement of Work outlined in the proposal

We showed that murine mammary carcinoma cells and human breast cancer cells can be efficiently transduced with Ad.mB7-1 and Ad.hB7-1, respectively (task 1 and 2 of the Statement of Work). We compared the in vivo growth behavior of untransduced and Ad.mB7-1 transduced mammary carcinoma cells in immunocompetent mice (task 5). T cell stimulation assays with transduced human breast cancer cells were performed to determine an anti-tumor response in vitro (task 9). Interestingly, B7 expression failed to reduce the tumorigenesis in vivo and to induce co-stimulation in vitro. Therefore, we hypothesized that human breast cancer cells produce immunoinhibitory factors. Our studies indicate that the tumor derived PGE2 partially inhibits T cell proliferation. We are currently characterizing other breast cancer derived immunoinhibitory factors.

Conclusions

We conclude from our study that there is a difference in the efficacy of adenovirus-mediated expression of B7-1 on melanoma cells and breast cancer cells. The inability of B7-1 expressing mammary carcinoma cells in reducing the tumor growth rate *in vivo* and the inability of B7-1 expressing breast cancer cell lines to induce T cell proliferation *in vitro* may in part be a consequence of the production of PGE₂ and other immunosuppressive factors. We are currently characterizing the breast cancer derived factors that are responsible for the observed inhibition of the proliferation of MN cells.

References

1. Janeway, C.A.J., *Approaching the asymptote?: evolution and revolution in immunology*. Vol. 54. 1989: cold spring harbor symp. quant. biol. 1-13.
2. Nossal, G.J.V., *Immunological tolerance: collaboration between antigen and lymphokines*. Science, 1989. **245**: p. 147-153.
3. Schwartz, R.H., *Acquisition of immunological self-tolerance*. Cell, 1989. **57**: p. 1073-1081.
4. June, C.H., et al., *The B7 and CD28 receptor families*. Immunology Today, 1994. **15**(7): p. 321-31.
5. Harding, F.A., et al., *CD28-mediated signalling co-stimulates murine T cells and prevents induction of anergy in T-cell clones*. Nature, 1992. **356**(16): p. 607-609.
6. Mueller, D.L., M.K. Jenkins, and R.H. Schwartz, *An accessory cell-derived costimulatory signal acts independently of protein kinase C activation to allow T cell proliferation and prevent the induction of unresponsiveness*. Journal of Immunology, 1989. **142**(8): p. 2617-28.
7. Gimmi, C.D., et al., *Human T-cell clonal anergy is induced by antigen presentation in the absence of B7 costimulation*. Proceedings of the National Academy of Sciences of the United States of America, 1993. **90**(14): p. 6586-90.
8. Allison, J.P., A.A. Hurwitz, and D.R. Leach, *Manipulation of costimulatory signals to enhance antitumor T-cell responses*. Current Opinion in Immunology, 1995. **7**(5): p. 682-6.
9. Razi-Wolf, Z., et al., *Expression and function of the murine B7 antigen, the major costimulatory molecule expressed by peritoneal exudate cells*. Proceedings of the National Academy of Sciences, USA., 1992. **89**(5): p. 4210-4214.
10. Azuma, M., et al., *Functional expression of B7/BB1 on activated T lymphocytes*. J. Exp. Med., 1993. **177**: p. 845-850.
11. Chen, L., et al., *Tumor immunogenicity determines the effect of B7 costimulation on T cell-mediated tumor immunity*. Journal of Experimental Medicine, 1994. **179**(2): p. 523-32.
12. Vile, R.G., *Gene therapy for cancer, the course ahead*. Cancer & Metastasis Reviews, 1996. **15**(3): p. 403-10.
13. Chen, L., et al., *Costimulation of antitumor immunity by the B7 counterreceptor for the T lymphocyte molecules CD28 and CTLA-4*. Cell, 1992. **71**: p. 1093-1102.
14. Coughlin, C.M., et al., *B7-1 and interleukin 12 synergistically induce effective antitumor immunity*. Cancer Research, 1995. **55**(21): p. 4980-7.
15. Baskar, S., et al., *Constitutive expression of B7 restores immunogenicity of tumor cells expressing truncated major histocompatibility complex class II molecules*. Proceedings of the National Academy of Sciences of the United States of America, 1993. **90**(12): p. 5687-90.
16. Matulonis, U., et al., *B7-1 is superior to B7-2 costimulation in the induction and maintenance of T cell-mediated antileukemia immunity. Further evidence that B7-1 and B7-2 are functionally distinct*. Journal of Immunology, 1996. **156**(3): p. 1126-31.
17. Martin-Fontecha, A., et al., *Heterogeneous effects of B7-1 and B7-2 in the induction of both protective and therapeutic anti-tumor immunity against different mouse tumors*. European Journal of Immunology, 1996. **26**(8): p. 1851-9.
18. Townsend, S.E. and J.P. Allison, *Tumor rejection after direct costimulation of CD8+ T cells by B7-transfected melanoma cells*. Science, 1993. **259**: p. 368-370.
19. Li, Y., et al., *Costimulation by CD48 and B7-1 induces immunity against poorly immunogenic tumors*. Journal of Experimental Medicine, 1996. **183**(2): p. 639-44.
20. Kuppner, M., et al., *Differential effects of leukotriene B4 on T4+ and T8+ lymphocyte*

- phenotype and immunoregulatory functions*. International Journal of Cancer, 1988. **42**(4): p. 562-7.
21. de Waal Malefyt, R., *et al.*, *Interleukin 10 (IL-10) and viral IL-10 strongly reduce antigen-specific human T cell proliferation by diminishing the antigen-presenting capacity of monocytes via downregulation of class II major histocompatibility complex expression*. Journal of Experimental Medicine, 1991. **174**(4): p. 915-24.
 22. Lala, P.K., R.S. Parhar, and P. Singh, *Indomethacin therapy abrogates the prostaglandin-mediated suppression of natural killer activity in tumor-bearing mice and prevents tumor metastasis*. Cellular Immunology, 1986. **99**(1): p. 108-18.
 23. Rola-Pleszczynski, M., *Differential effects of leukotriene B4 on T4+ and T8+ lymphocyte phenotype and immunoregulatory functions*. Journal of Immunology, 1985. **135**(2): p. 1357-60.
 24. Repique, C.J., J.D. Kettering, and D.S. Gridley, *Immunosuppression derived from human B-lymphoblastoid and melanoma cell lines*. Cancer Investigation, 1992. **10**(3): p. 201-8.
 25. Giacomoni, D., *et al.*, *Inhibitors of lymphocyte activation secreted by human melanoma cell lines*. Medical Oncology & Tumor Pharmacotherapy, 1990. **7**(4): p. 273-80.
 26. Morrone, G., *et al.*, *Transferrin-like autocrine growth factor, derived from T-lymphoma cells, that inhibits normal T-cell proliferation*. Cancer Research, 1988. **48**(12): p. 3425-9.
 27. Karmali, R.A., *et al.*, *Prostaglandins in breast cancer: relationship to disease stage and hormone status*. British Journal of Cancer, 1983. **48**(5): p. 689-96.
 28. Laning, J.C., C.M. Isaacs, and J. Hardin-Young, *Normal human keratinocytes inhibit the proliferation of unprimed T cells by TGFbeta and PGE2, but not IL-10*. Cellular Immunology, 1997. **175**(1): p. 16-24.
 29. Valitutti, S., *et al.*, *The role of arachidonic acid metabolite PGE2 on T cell proliferative response*. Journal of Clinical & Laboratory Immunology, 1989. **29**(4): p. 167-73.
 30. Skibinski, G., *et al.*, *Relative immunosuppressive activity of human seminal prostaglandins*. Journal of Reproductive Immunology, 1992. **22**(2): p. 185-95.
 31. Brunda, M.J., R.B. Herberman, and H.T. Holden, *Inhibition of murine natural killer cell activity by prostaglandins*. Journal of Immunology, 1980. **124**(6): p. 2682-7.
 32. Miao, D., G. Skibinski, and K. James, *The effects of human seminal plasma and PGE2 on mitogen induced proliferation and cytokine production of human splenic lymphocytes and peripheral blood mononuclear cells*. Journal of Reproductive Immunology, 1996. **30**(2-3): p. 97-114.
 33. Vercammen, C. and J.L. Ceuppens, *Prostaglandin E2 inhibits human T-cell proliferation after crosslinking of the CD3-Ti complex by directly affecting T cells at an early step of the activation process*. Cellular Immunology, 1987. **104**(1): p. 24-36.
 34. Murray, J.L., J. Dowd, and E.M. Hersh, *In vitro inhibition of interleukin-2 production by peripheral blood lymphocytes from stage III melanoma patients by prostaglandin E2: enhancement of lymphocyte proliferation by exogenous interleukin-2 plus indomethacin*. Journal of Biological Response Modifiers, 1986. **5**(1): p. 12-9.
 35. Watson, J. and S.Y. Chuah, *Technique for the primary culture of human breast cancer cells and measurement of their prostaglandin secretion*. Clinical Science, 1992. **83**(3): p. 347-52.
 36. Yang, C.Y. and C.L. Meng, *Regulation of PG synthase by EGF and PDGF in human oral, breast, stomach, and fibrosarcoma cancer cell lines*. Journal of Dental Research, 1994. **73**(8): p. 1407-15.

37. Fulton, A., S. Zhang, and Y. Chong, *Role of the prostaglandin E2 receptor in mammary tumor metastasis*. *Cancer Research*, 1991. **51**(8): p. 2047-50.
38. Hughes, R., P. Timmermans, and M.P. Schrey, *Regulation of arachidonic acid metabolism, aromatase activity and growth in human breast cancer cells by interleukin-1beta and phorbol ester: dissociation of a mediatory role for prostaglandin E2 in the autocrine control of cell function*. *International Journal of Cancer*, 1996. **67**(5): p. 684-9.
39. Noguchi, M., *et al.*, *Effects of piroxicam and esculetin on the MDA-MB-231 human breast cancer cell line*. *Prostaglandins Leukotrienes & Essential Fatty Acids*, 1995. **53**(5): p. 325-9.
40. Planchon, P., *et al.*, *Evidence for separate mechanisms of antiproliferative action of indomethacin and prostaglandin on MCF-7 breast cancer cells*. *Life Sciences*, 1995(57): p. 1233-40.
41. Planchon, P., *et al.*, *Alteration of prostaglandin E receptors in advanced breast tumour cell lines*. *Molecular & Cellular Endocrinology*, 1995. **111**(2): p. 219-23.
42. Roper, R., *et al.*, *Prostaglandin E2 promotes Il-4-induced IgE and IgG1 synthesis*. *Journal of Immunology*, 1990. **145**: p. 2644-2651.