



US Army Corps
of Engineers
Waterways Experiment
Station

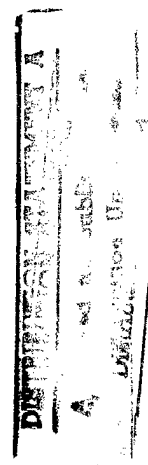
Zebra Mussel Research Technical Notes

Contents

January 1998

Section 1 — Environmental Testing

- ZMR-1-01** The Zebra Mussel: Biology, Ecology, and Recommended Control Strategies
- ZMR-1-02** Larval Monitoring in a Chlorine Treatment Program to Prevent Zebra Mussel Settlement in Hydropower Facilities
- ZMR-1-03** Louisville District Initiates a Zebra Mussel Monitoring Program
- ZMR-1-04** Hand-Held Sampler for Zebra Mussel Collection
- ZMR-1-05** Developing a Protocol to Ensure Environmental Compliance in a Zebra Mussel Control Program
- ZMR-1-06** Mussel Filtration Rates Using Natural Versus Artificial Particles in Suspension
- ZMR-1-07** Inadvertent Transport of Live Zebra Mussels on Barges — Experiences in the St. Louis District, Spring 1992
- ZMR-1-08** Environmental Effects of Zebra Mussels: Riverine Studies Initiated in 1991 and 1992
- ZMR-1-09** Transport of Live Zebra Mussels by Barge—Experiences in the Louisville District, 1992
- ZMR-1-10** The NEPA Process in a Zebra Mussel Control Program
- ZMR-1-11** Evaluating the Susceptibility of Structures to Zebra Mussel Infestation
- ZMR-1-12** Collection of Zebra Mussel Samples for Contaminant Analyses
- ZMR-1-13** Acclimation Response of Zebra Mussels to Laboratory Testing
- ZMR-1-14** Environmental Effects of Zebra Mussel Infestations
- ZMR-1-15** A Summary of Federal Regulations Related to Use of FIFRA-Registered Biocides and Region 5, USEPA, Use of These Biocides for Zebra Mussel Control
- ZMR-1-16** Bioaccumulation of Contaminants by Zebra Mussels



19980209 116

DTIC QUALITY INSPECTED

- ZMR-1-17** Distinguishing Zebra Mussels from Quagga Mussels by Sperm Examination
- ZMR-1-18** Zebra Mussel Infestation at Black Rock Lock, Buffalo, New York
- ZMR-1-19** Procedure for Measuring the Force Required to Remove Zebra Mussels from Substrate
- ZMR-1-20** Reports of Zebra Mussel Attachment to Ohio River Division Water Quality Monitors
- ZMR-1-21** Shell Shape Differences in *Dreissena* spp.
- ZMR-1-22** Registration Process Required by the USEPA for a New Pesticide
- ZMR-1-23** Zebra Mussels at Lock and Dam 6, Upper Mississippi River, January 1994
- ZMR-1-24** Distinguishing the Zebra Mussel, Quagga Mussel, and Conrad's False Mussel Based on Shell Morphology
- ZMR-1-25** Use of Bridal Veil to Collect Zebra Mussels
- ZMR-1-26** Toxicity and Environmental Effects of Disposal of Contaminated Zebra Mussels
- ZMR-1-27** Sediment Toxicity and Bioaccumulation of Contaminants in the Zebra Mussel at Times Beach, Buffalo, New York
- ZMR-1-28** Periodic Inspection at Black Rock Lock — A Review of Procedure
- ZMR-1-29** Introduction and Spread of *Dreissena polymorpha* in the U.S. Inland Waterway System, 1992-1993
- ZMR-1-30** Zebra Mussel Densities in St. Paul District, 1991-1994
- ZMR-1-31** Status of Zebra Mussel Infestation in Oklahoma
- ZMR-1-32** Tolerances of Zebra Mussels to Various Temperatures in the Mississippi and Ohio Rivers, 1988-1992
- ZMR-1-33** Influences of Zebra Mussels on Conditions at the Sediment-Water Interface
- ZMR-1-34** Impacts of Zebra Mussel Infestations on Water Quality

Section 2 — Control Methods

- ZMR-2-01** Thermal Sprayed Coatings
- ZMR-2-02** Copper-Based Marine Antifoulants
- ZMR-2-03** Zinc-Rich Paints
- ZMR-2-04** High-Pressure Water Jetting and Carbon Dioxide Pellet Blasting
- ZMR-2-05** Construction Materials That Act as Deterrents to Zebra Mussel Attachment
- ZMR-2-06** Vendors That Provide Services and Equipment for Zebra Mussel Control
- ZMR-2-07** Corrosion Rates of Ferrous Metals Associated with Zebra Mussel Infestations
(Revised)
- ZMR-2-08** Nontoxic Foul-Release Coatings for Zebra Mussel Control
- ZMR-2-09** Freeze Survival of Aerially Exposed Zebra Mussels
- ZMR-2-10** Aerial Exposure and Mortality of Zebra Mussels
- ZMR-2-11** Upper Temperature Limits of Zebra Mussels as Indicated by Respiration Rates
- ZMR-2-12** Use of a Copper-Containing Epoxy Material to Protect a Bay Class Tug from Zebra Mussel Infestations
- ZMR-2-13** Use of Decreased Air Pressure under Laboratory Conditions to Increase Zebra Mussel Mortality
- ZMR-2-14** Review of Zebra Mussel Control Methods
- ZMR-2-15** Metal Leaching Versus Antifoulant Control Efficacy
- ZMR-2-16** Use of Thermal Treatment at Shawnee Fossil Fuel Plant
- ZMR-2-17** Update on Floating Plant Components Susceptible to Zebra Mussel Infestations
- ZMR-2-18** Use of an Air Injection System to Control Zebra Mussels, May 1994
- ZMR-2-19** Comparison of the Component-Level Performance of Anti-Zebra Mussel Coating Systems with Research Coupon Results

Section 3 — Control Strategies

- ZMR-3-01** Controlling Zebra Mussel Infestations on Flap Gates Associated with Drainage Structures
- ZMR-3-02** Controlling Zebra Mussel Infestations in Fire Prevention Systems in Locks that Use Raw Water
- ZMR-3-03** Control of Zebra Mussel Infestations on Floating Plant of the U.S. Army Engineer District, Buffalo
- ZMR-3-04** Strategies for Zebra Mussel Infestations on Waterway Gauging Stations
- ZMR-3-05** Components of Hydropower Projects Sensitive to Zebra Mussel Infestations
- ZMR-3-06** Environmentally Sound Zebra Mussel Control Strategies at Drainage Structures, Pumping Stations, and Water Intakes
- ZMR-3-07** Components of Vessels and Dredges Susceptible to Zebra Mussel Infestations
- ZMR-3-08** Components of Navigation Locks and Dams Sensitive to Zebra Mussel Infestations
- ZMR-3-09** Control of Zebra Mussels in Service Water
- ZMR-3-10** Use of Reduced Pressure to Accelerate Death of Zebra Mussels
- ZMR-3-11** Use of Removable Intake Screens to Reduce Maintenance Problems Associated with Zebra Mussels
- ZMR-3-12** Use of Hot-Dip Zinc to Protect a Steel Pipe
- ZMR-3-13** Use of a Water-Level Transmitter Not Affected by Zebra Mussel Infestations
- ZMR-3-14** Modification of Water Intakes to Reduce Zebra Mussel Infestations
- ZMR-3-15** Development of a Zebra Mussel Control Strategy for the Cheatham Power Plant
- ZMR-3-16** A Proactive Zebra Mussel Infestation Impact Reduction Strategy
- ZMR-3-17** Buffalo District Floating Plant Experience with Zebra Mussels
- ZMR-3-18** Chemical Control Research Strategy for Zebra Mussels
- ZMR-3-19** Use of Microorganisms and Their Metabolites for Zebra Mussel Control
- ZMR-3-20** Design of an In-line Backwash Filtration System for Barkley Dam, Kentucky

Section 4 — Miscellaneous

- ZMR-4-01** Susceptibility of Different Ages of Concrete to Zebra Mussel Infestation
- ZMR-4-02** A Method for Calculating the Total Mass of Zebra Mussels
- ZMR-4-03** Susceptibility of Navigation Locks to Zebra Mussel Infestations
- ZMR-4-04** A Preliminary Examination of Odor Problems Caused by Decaying Zebra Mussels
- ZMR-4-05** Strategies Employed by the Power Industry to Reduce or Eliminate Problems Caused by Zebra Mussels
- ZMR-4-06** Estimation of Filtration Rate of Zebra Mussels
- ZMR-4-07** Reproductive Cycle of Zebra Mussels
- ZMR-4-08** Status of Zebra Mussels, Spring 1994