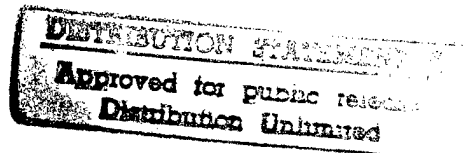


**NEURAL RESPONSES TO INJURY:
PREVENTION, PROTECTION, AND REPAIR
Annual Technical Report
1996**

Submitted by

Nicolas G. Bazan, M.D., Ph.D.
Project Director



Period Covered: 20 September, 1995, through 19 September, 1996

Cooperative Agreement DAMD17-93-V-3013

between

United States Army Medical Research and Development Command
(Walter Reed Army Institute of Research)

and

Louisiana State University Medical
Center
Neuroscience Center of Excellence

**Expansion of
Physical Facilities**

Volume 9 of 9

DTIC QUALITY INSPECTED 4

Project Director:
Nicolas G. Bazan, M.D., Ph.D.

19980323 155

Volume 9 Expansion of Physical Facilities

Project Directors: Nicolas G. Bazan, M.D., Ph.D.

Cover Page i
Table of Contents ii
Purpose 1
Use of Funding 1
Floor Plans for Level 8 and 9 3

DISTRIBUTION STATEMENT
Approved for public release
Distribution Unlimited

EXPANSION OF PHYSICAL FACILITIES

Purpose:

The addition of two floors to the existing building housing the LSU Eye Center and the Lions Eye Research Laboratories is now nearing completion. The Neuroscience Center will be occupying this space in February - March 1997. Plans for floors eight and nine have been included as an appendix of this volume.

The additional space will greatly enhance the capabilities of the research program of the Neuroscience Center. Many components of the eight research projects, as well as the associated Core research facilities and administrative units, will be housed in the new space. The benefits of the synergy created by proximity in the development of exciting new approaches to research problems related with Neural Responses to Injury: Prevention, Protection, and Repair will soon be realized. The centralization of the Core Research Facilities will allow cooperative usage and simplify oversight, reducing costs and eliminating duplication. Finally, the location of administrative functions in constant contact with the research facilities will permit efficient management and minimize wasteful miscommunications.

Use of funding:

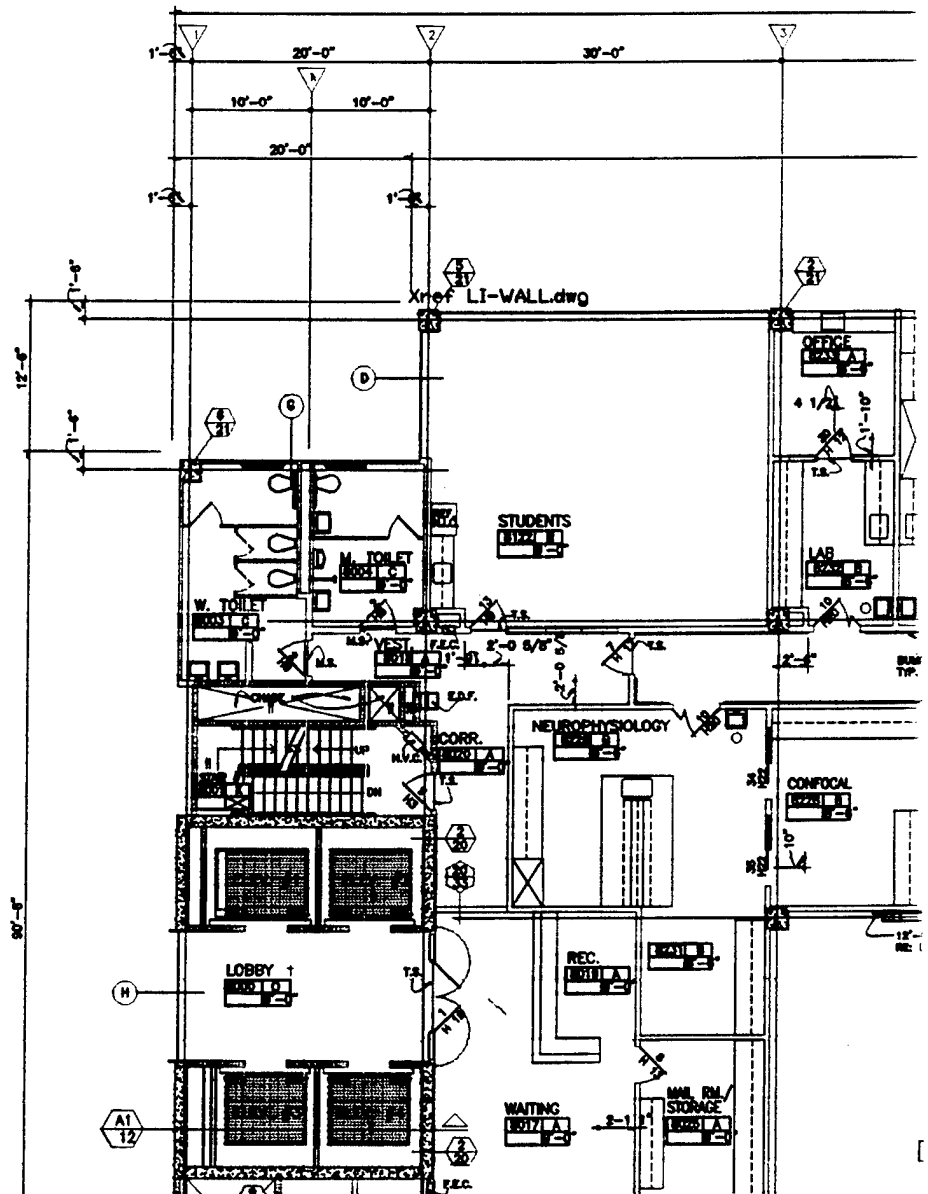
In addition to the \$5,731,635 funded through the present Cooperative Agreement, the Neuroscience Center has committed \$1,552,000 for costs associated with construction of floors eight and nine. These two additional floors, encompassing approximately 18,750 square feet of laboratory space, 8,200 square feet of Core Research Facilities space, 4,450 square feet of faculty and administrative office space, 8,725 square feet of conference and meeting rooms space, and animal facilities. Laboratory space will be allotted to investigators who are involved in collaborative studies

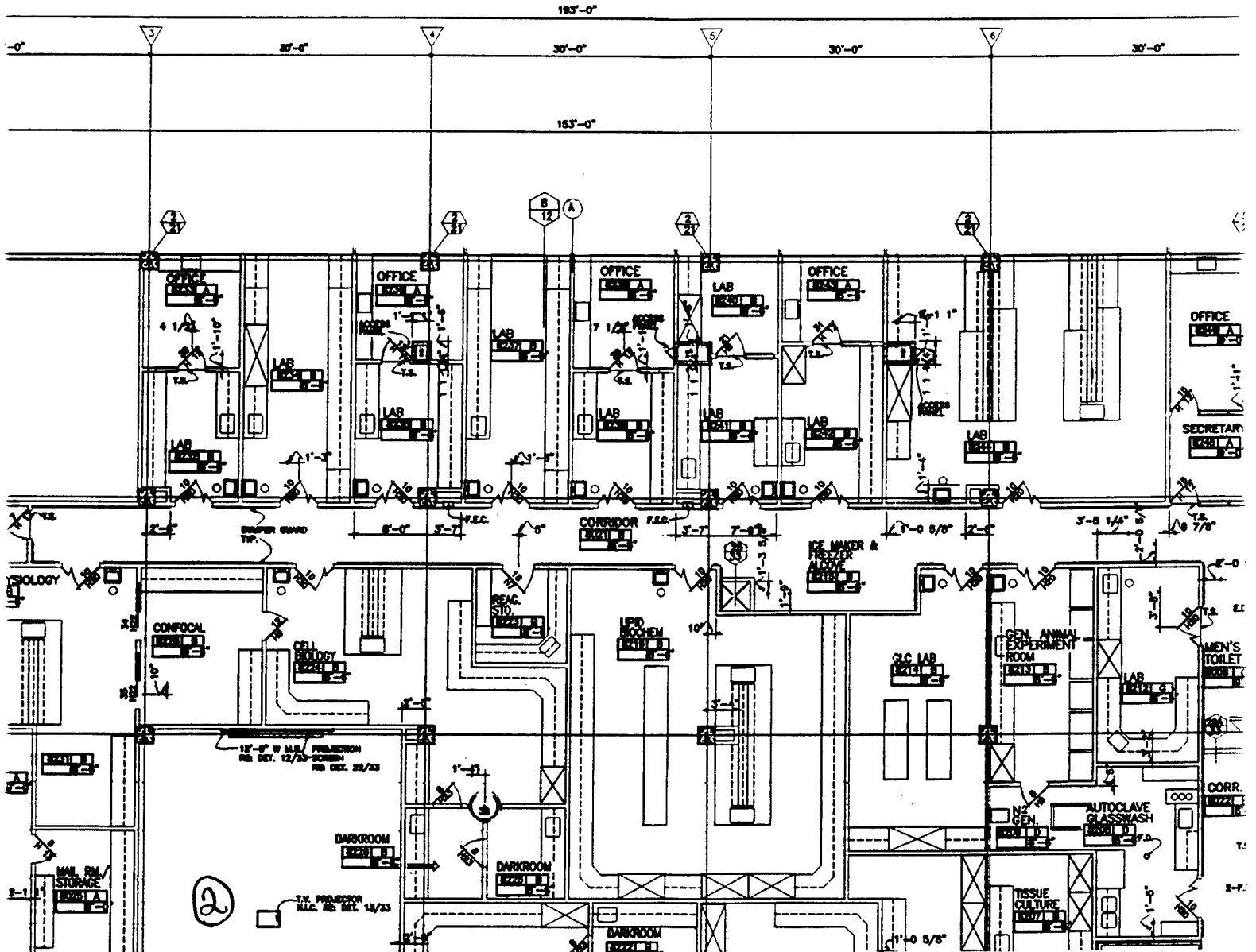
as described in this proposal; additional laboratory space will be made available for new investigators who address neural plasticity and molecular biological approaches to various aspects of neurobiology of disease and who will be recruited to enhance and expand these research projects. The Core Facilities space will bring together the state-of-art instrumentation acquired in conjunction with this project, as well as other equipment purchased through federal, private, and university funding sources. Faculty and administrative offices will be located close to the laboratory areas, to facilitate intellectual collaboration and management efficiency. The conference and meeting space will provide much needed facilities for seminars, committee meetings, formal and informal scientific interchanges, and interdepartmental and extrainstitutional symposia, all of which will provide a forum for the dissemination of information among the wide variety of scientists who are focused on the scientific problems and potential solutions of neuroscience research as proposed in the Cooperative Agreement.

The space will be the physical focus of neuroscience research projects in conjunction with the USAMRDC. The completion of the physical facilities will make possible the continuation and expansion of the current projects and initiation of new projects of relevant interest to the USAMRDC.

APPENDIX:

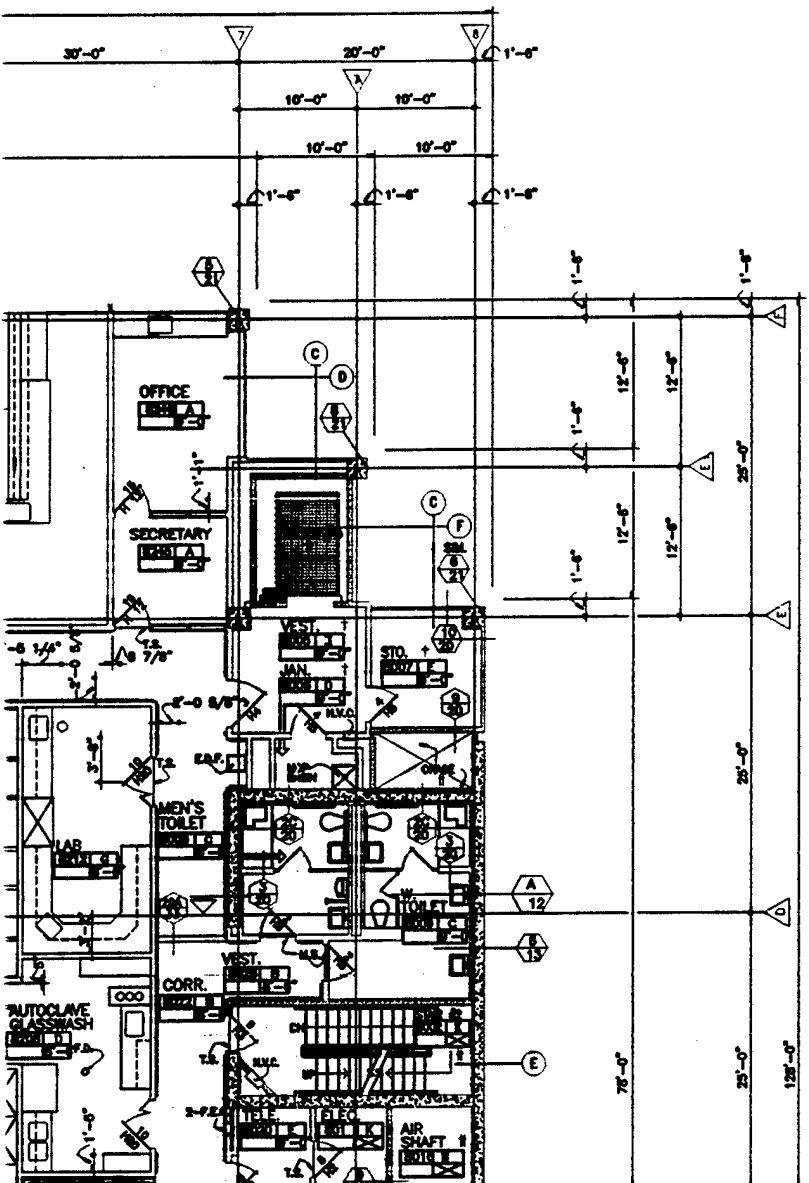
Floor Plans for Level 8 and 9





8001
 8002
 - TOILET ROOMS (8006, 8008 AND 8106)

SHEET 24



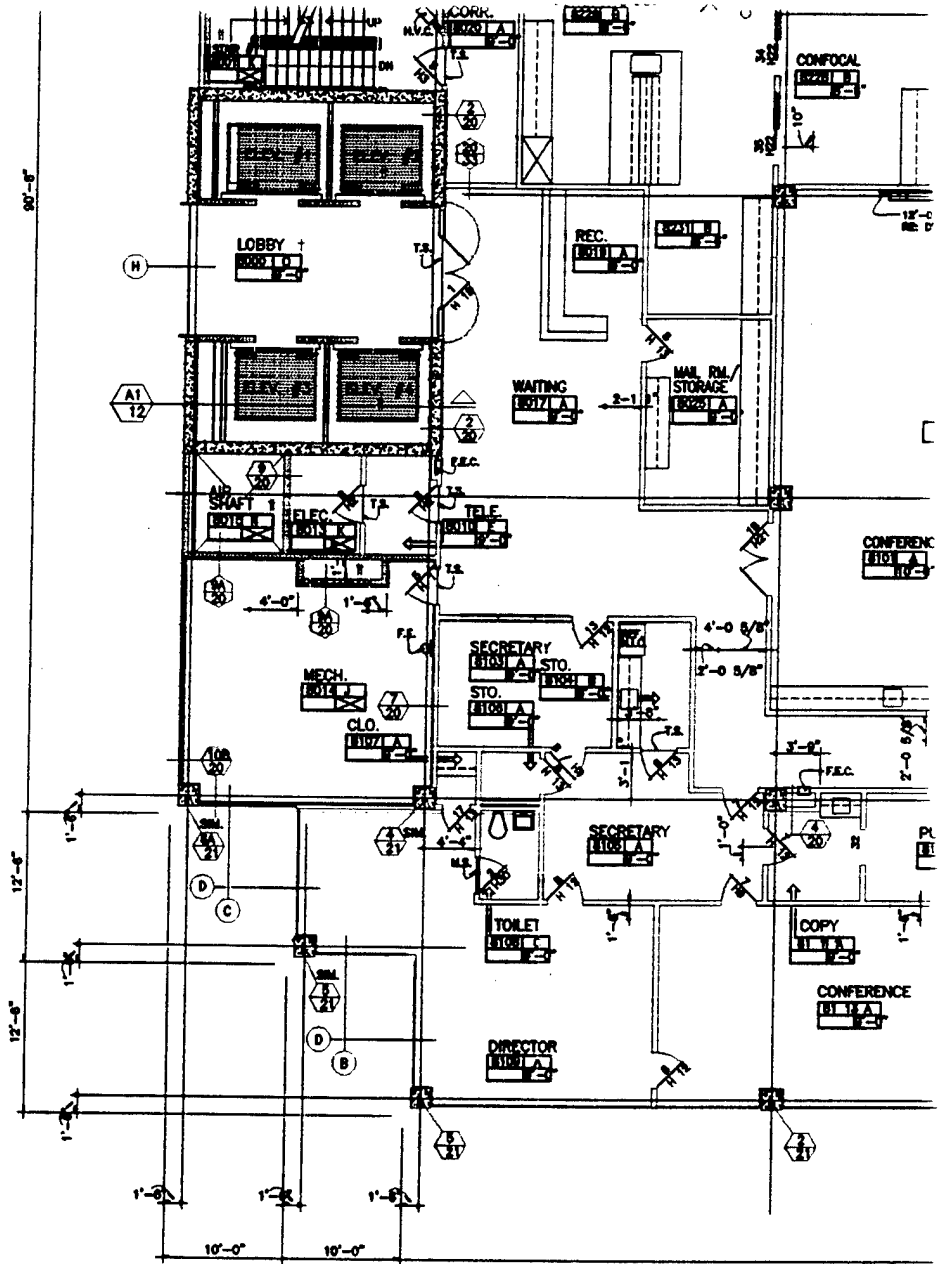
(3)

CIMINI MERIC DUPLANTIER ARCHITECTS
 PLANNERS
 a Professional Corporation
 220 DECATUR STREET NEW ORLEANS, LOUISIANA 70130-1016 504.588.9488 FAX 504.588.9490

**THREE ADDITIONAL LEVELS AND ENTRANCE
 CANOPY FOR LOUISIANA LIONS EYE
 FOUNDATION BUILDING
 LSU MEDICAL CENTER IN NEW ORLEANS**

PLT: APRIL 16, 1994.

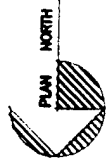
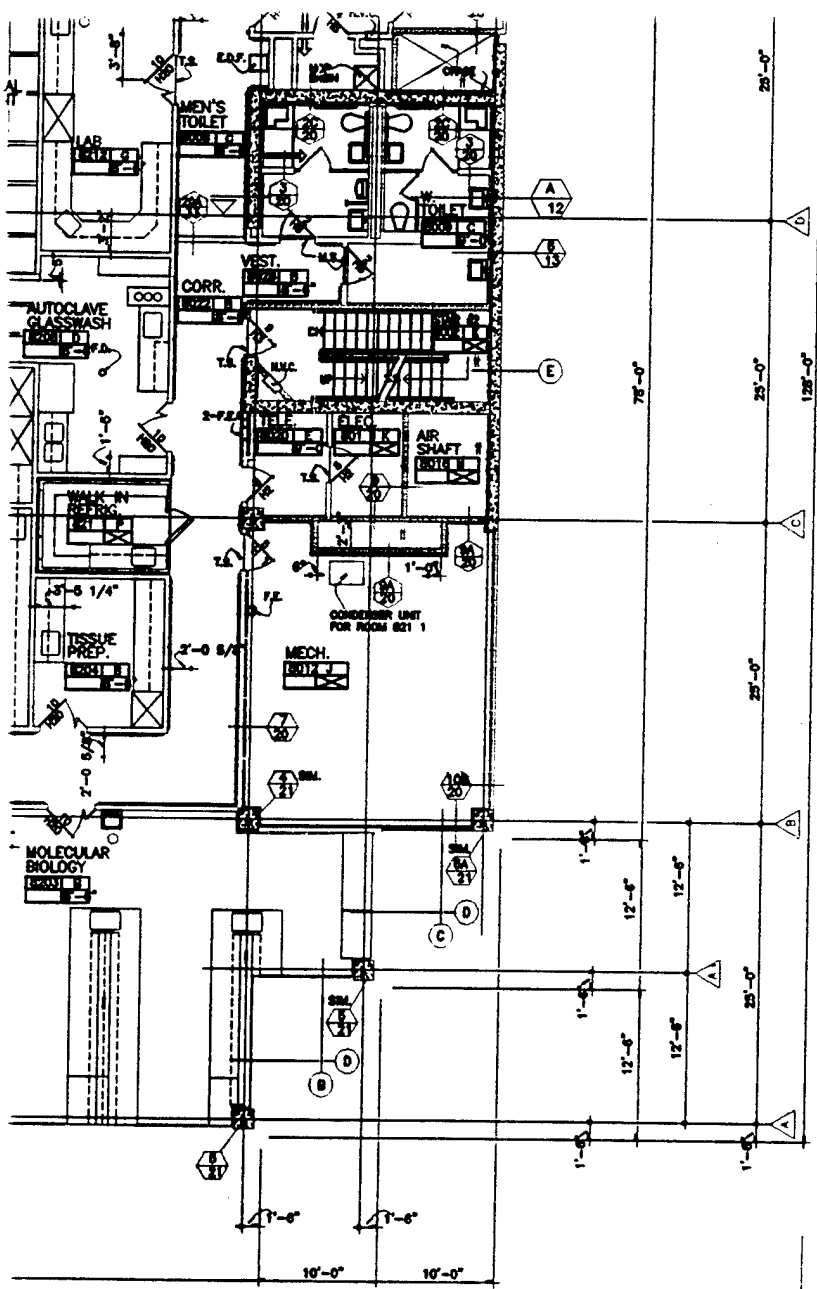
Kref FI-SC.dwg



LEVEL EIGHT

- † REFERS TO 1 HOUR FIRE RATED ENCLOSURE
- # REFERS TO 2 HOUR FIRE RATED ENCLOSURE

(4)

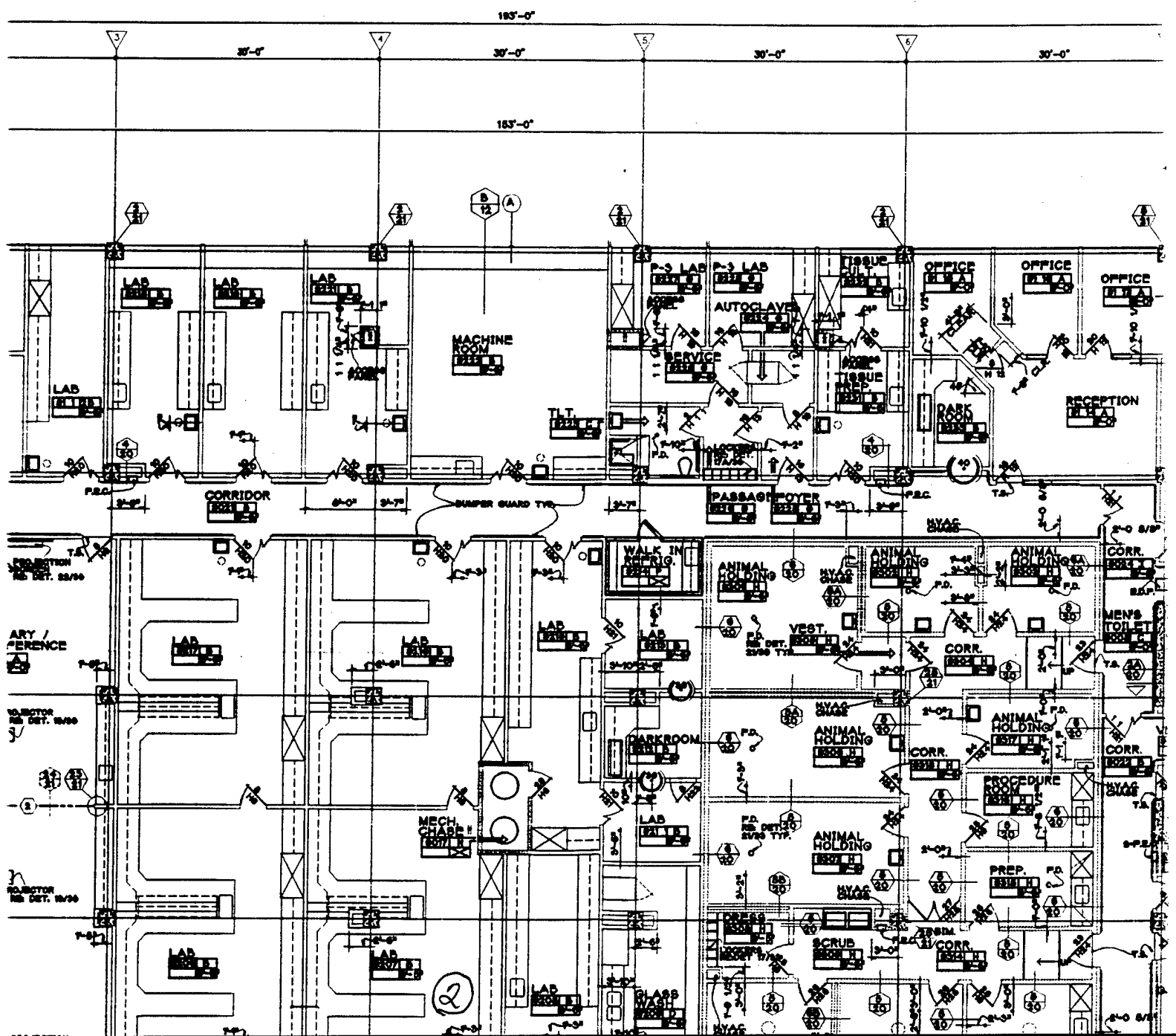


SCALE $\frac{1}{8}'' = 1'-0''$

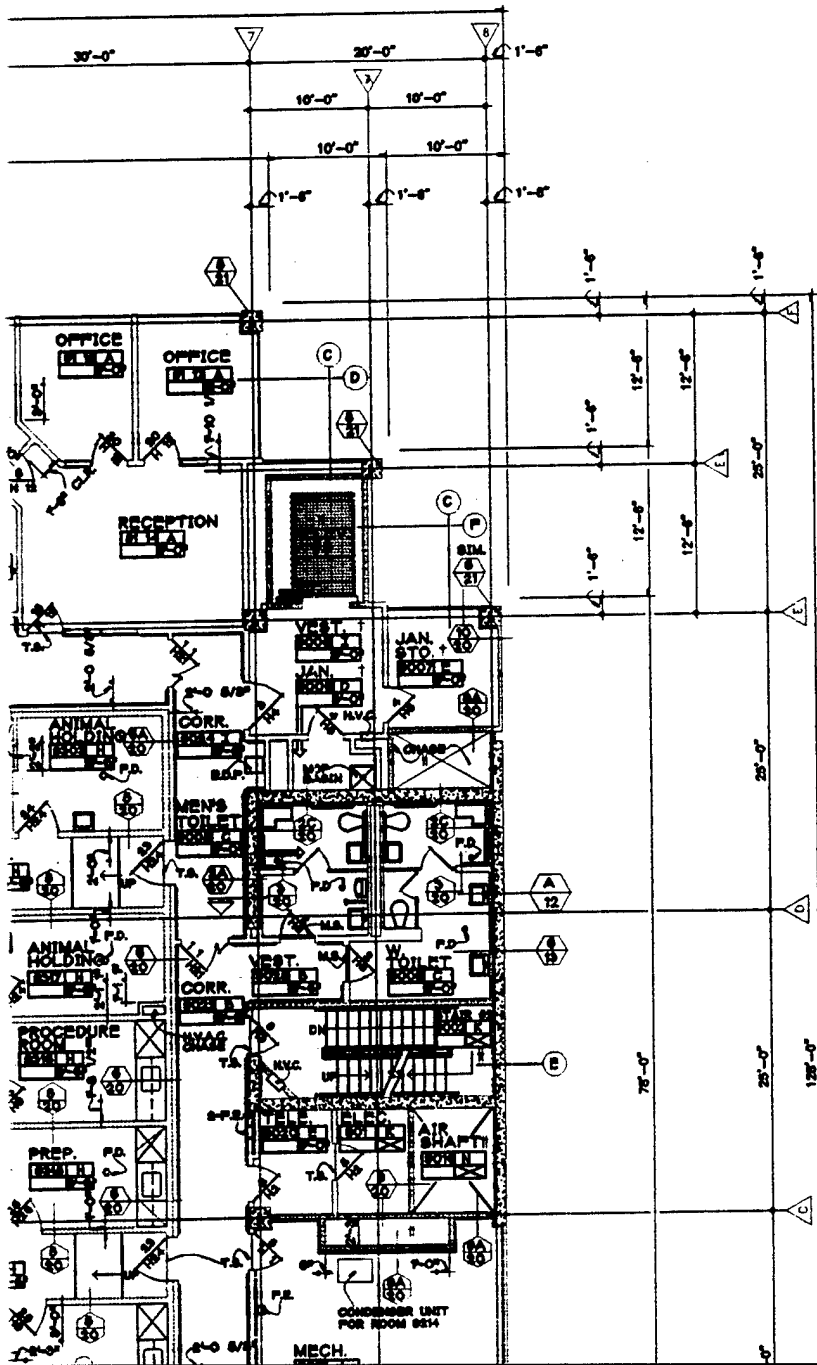
LEVEL 00

6

SHEET NO 5 OF 33	DATE DRAWN BY FJR CHECKED BY NO	REVISIONS	PACKAGE "A" COMMISSION 9301	THREE ADDITION CANOPY FOR FOUND LSU MEDICAL
-------------------------------	---	-----------	--	--



8001
 8002
 - TOILET ROOMS 223, 8008 AND 8009 SHEET 24

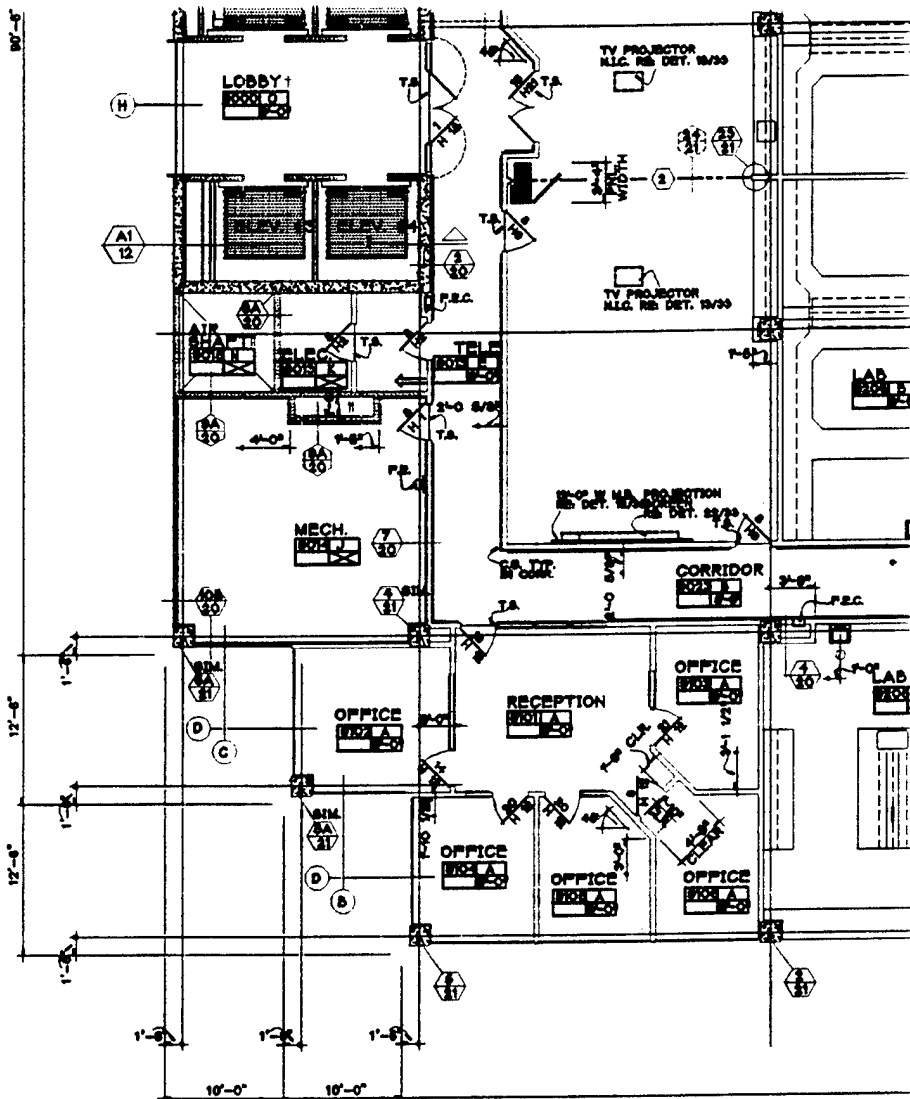


CIMINI MERIC DUPLANTIER ARCHITECTS PLANNERS
 a Professional Corporation
 239 DECATUR STREET NEW ORLEANS, LOUISIANA 70130-1016 504 589 9489 FAX 504 589 9490

THREE ADDITIONAL LEVELS AND ENTRANCE
 CANOPY FOR LOUISIANA LIONS EYE
 FOUNDATION BUILDING
 LSU MEDICAL CENTER IN NEW ORLEANS



PAGE "A"
 MISSION
 301



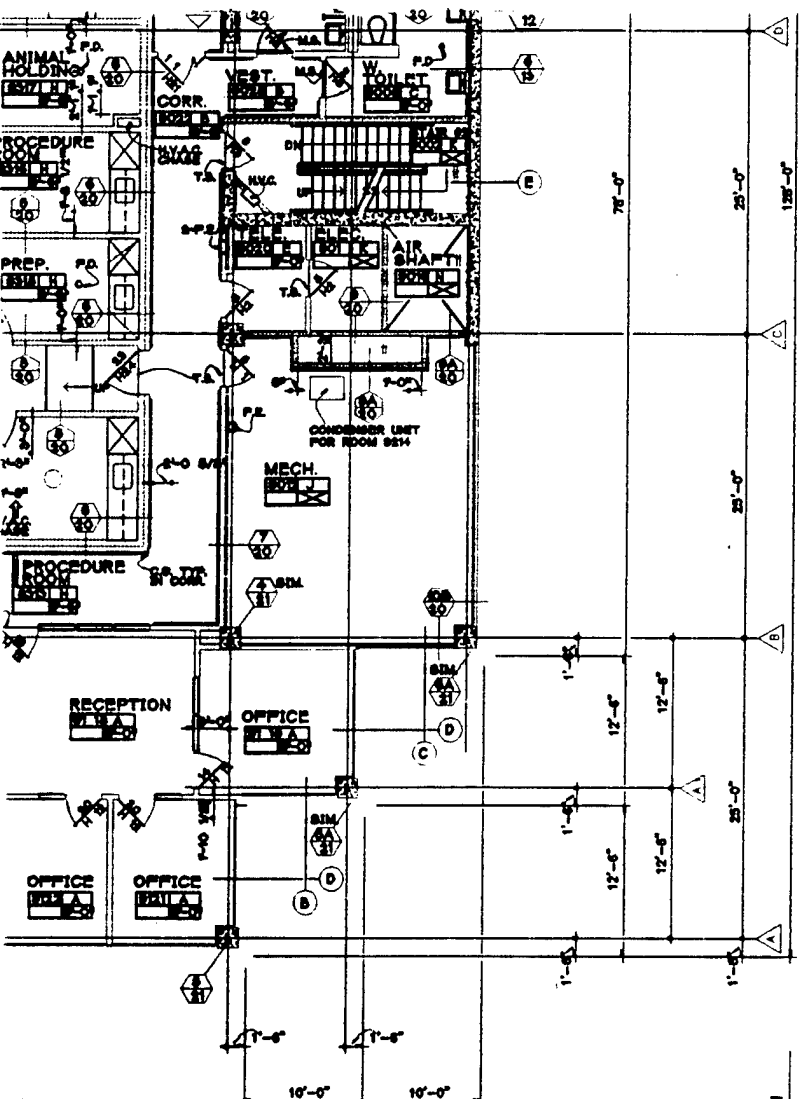
LEVEL NIN

- 1 REFERS TO 1 HOUR FIRE RATED ENCLOSURE
- 2 REFERS TO 2 HOUR FIRE RATED ENCLOSURE

PLOT: APRIL 16, 1994.

kref FI-SC.dwg

4



L A N



SCALE 1/8" = 1'-0"

1/16"

LEVEL

9

6

SHEET NO	DATE	DRAWN BY FOR CHECKED BY NO	REVISIONS	T1
			PACKAGE "A" COMMISSION 9301	L
6				
OF				

33