

076034

JPRS-CPI-84-001

9 January 1984

# China Report

PLANT AND INSTALLATION DATA

DISTRIBUTION STATEMENT A

Approved for public release;  
Distribution Unlimited

19980306 088

DTIC QUALITY INSPECTED 3

**FBIS**

FOREIGN BROADCAST INFORMATION SERVICE

10  
52  
A04

#### NOTE

JPRS publications contain information primarily from foreign newspapers, periodicals and books, but also from news agency transmissions and broadcasts. Materials from foreign-language sources are translated; those from English-language sources are transcribed or reprinted, with the original phrasing and other characteristics retained.

Headlines, editorial reports, and material enclosed in brackets [] are supplied by JPRS. Processing indicators such as [Text] or [Excerpt] in the first line of each item, or following the last line of a brief, indicate how the original information was processed. Where no processing indicator is given, the information was summarized or extracted.

Unfamiliar names rendered phonetically or transliterated are enclosed in parentheses. Words or names preceded by a question mark and enclosed in parentheses were not clear in the original but have been supplied as appropriate in context. Other unattributed parenthetical notes within the body of an item originate with the source. Times within items are as given by source.

The contents of this publication in no way represent the policies, views or attitudes of the U.S. Government.

#### PROCUREMENT OF PUBLICATIONS

JPRS publications may be ordered from the National Technical Information Service, Springfield, Virginia 22161. In ordering, it is recommended that the JPRS number, title, date and author, if applicable, of publication be cited.

Current JPRS publications are announced in Government Reports Announcements issued semi-monthly by the National Technical Information Service, and are listed in the Monthly Catalog of U.S. Government Publications issued by the Superintendent of Documents, U.S. Government Printing Office, Washington, D.C. 20402.

Correspondence pertaining to matters other than procurement may be addressed to Joint Publications Research Service, 1000 North Glebe Road, Arlington, Virginia 22201.

# NOTICE

Effective with this issue, JPRS is implementing a new numbering system for its reports in which the dual numbering system currently in use will be replaced with a single 15-character alphanumeric code. Within this code, each JPRS report will have a unique trigraph code. For example, the alphanumeric code for the first JPRS JAPAN REPORT issued in 1984 will be:

JPRS-JAR-84-001

## Explanation of Elements of Alphanumeric Code

- JPRS: Indicates that the report was published by the Joint Publications Research Service
- JAR: Trigraph code for the JAPAN REPORT
- 84: Indicates the year in which the report was published
- 001: First report in the series. Each report series will have a separate numbering system that will begin with 001 on 1 January every year and will end on 31 December every year with whatever 3-digit number has been reached.

The alphanumeric code described above will appear in the upper left-hand corner of each report. The date the report was prepared for publication will appear on the line below the code.

9 January 1984

CHINA REPORT  
PLANT AND INSTALLATION DATA

CONTENTS

I. Metallurgical Industry.....	1
II. Transportation Equipment Industry.....	3
III. Electronic and Precision Equipment Industries.....	6
IV. Chemical Industry.....	12
V. Fuel and Power Industries.....	16
VI. Machine-Building Industry.....	19
VII. Agricultural Machinery Industry.....	25
VIII. Miscellaneous Industries.....	26
IX. Photographs of Industrial Facilities.....	31

C

I. METALLURGICAL INDUSTRY

Item: Baotou Iron and Steel Company  
[0545 7333 6921 6993 0361 0361]

Location: Baotou, Nei Monggol AR, PRC

Data: The 60kg/m heavy rail and beam ultrasonic wave detection automatic production line has been put into operation at this company's rail and beam plant in March 1983. All technical indices are up to the standards specified in YB951-81 "Steel Rail Ultra-Sonic Wave Fault Detection Methods." From here on, all 60kg/m heavy rails will be inspected through ultrasonic wave detection before leaving the plant.

Source: Beijing GANGTIE [IRON AND STEEL] in Chinese No 7, 1983 p 77

Item: Shandong Aluminum Plant  
[1472 2639 6986 0617]

Location: Shandong Province, PRC

Data: A rotary kiln with an annual output of 400,000 tons of ordinary silicate cement was put into trial operation at this enterprise's cement plant on 1 June 1983. When the whole fitting project is completed, this plant's annual cement output will reach 1.1 million tons, making it one of three large cement plants in the country having an output capacity exceeding 1 million tons. Measuring 100 meters in length and 4.5 meters in diameter, this cement kiln was designed and built by personnel of this plant. It was completed 6 months ahead of schedule and built at a cost 30 percent less than the original estimates. The cost per ton of cement produced by the rotary kiln is 10 percent less than that of ordinary cement produced in the country, making it possible to realize 8.16 million yuan in profit and tax annually.

Source: Beijing ZHONGGUO JIANCAI [BUILDING MATERIALS IN CHINA] in Chinese No 4, 1983 p 4

Item: Guizhou Aluminum Plant  
[6311 1558 6986 0617]

Location: Guizhou, PRC

Data: This plant built with imported equipment has turned out 70,000 tons of aluminum ingots since it went into trial production in August 1982, according to Han Zhaohua, deputy director of the plant. The plant has a designed annual production capacity of 80,000 tons of electrolytic aluminum. The technology and equipment were imported from seven countries including Japan and France. Construction of the project with an investment of 700 million yuan started on October 1, 1979. Guizhou Province has large reserves of bauxite and sufficient electric power. Completion of the plant will help meet China's needs in aluminum supply.

Source: Beijing XINHUA in English 0714 GMT 2 Dec 83 OW]

## II. TRANSPORTATION EQUIPMENT INDUSTRY

Item: China State Shipbuilding Corporation  
[0022 0948 5307 5306 1562 2814 4920 0361 0674]

Location: Beijing, PRC

Data: During the January-August 1983 period, one 36,000 dwt bulk carrier, two 27,000 dwt bulk carriers, one 16,000 dwt multipurpose cargo ship, three 12,300 dwt cargo ships and two 4,400/6,400 dwt cargo ships were delivered to foreign buyers on schedule by this corporation. The ship construction period of the shipyards and factories subordinate to this enterprise has been shortened. For example, the construction period of the third 12,300 dwt container ship built by the Shanghai Shipyard was three months shorter than that of the first one; for the third 27,000 dwt cargo ship built by the Dalian Shipyard, the interval between launch and delivery was only two months.

Source: Beijing CHUANGBO SHIJIE [SHIP WORLD] in Chinese and English 12 Oct 83 p 2

Item: Guangzhou Shipyard  
[1684 1558 6644 5307 0617]

Location: Guangzhou, Guangdong, PRC

Data: This shipyard is equipped with 10,000-ton building berths, 5,000-ton berths, docks with 10,000-ton and 2,000-ton capacity respectively, 100-ton jib cranes and jib cranes under 40-ton capacity. Installed in the shops and instrumentation rooms of the yard are advanced and precision equipment for design, research, analysis and fabrication. The shipyard is capable of building in quantity modern vessels up to 20,000 dwt and repairing ships of various types and fabricating 20-40 foot containers.

Source: Beijing CHUANBO SHIJIE [SHIP WORLD] in Chinese and English 12 Oct 83  
p 11

Item: Chongqing Steamship Company  
[6850 1987 6544 5307 0361 0674]

Location: Chongqing, Sichuan, PRC

Data: Improved enterprise management and organization in shipping have enabled this company to gain marked economic results. During the January-October 1983 period, this company realized a profit of 2.76 million yuan. Because of poor management, the company, the largest shipping enterprise in Sichuan Province, has been operating at a loss for a long period. In 1981 alone, it incurred a loss of 2.66 million yuan. In 1982, the company again reported a loss of 860,000 yuan. The shipment of 180,000 tons of supplies to other parts of the country, such as Wuhan, Nanjing, Jiujiang, and Shanghai during the January-October 1983 period, has also earned for the company more than 6 million yuan, which accounts for 50 percent of its total earning. In addition, the company has adopted measures to promote safety and to save energy. During the January-October 1983 period, it saved 1,200 tons of oil valued at 350,000 yuan.

Source: Chengdu SICHUAN RIBAO in Chinese 14 Nov 83 p 1

Item: Zhenjiang Shipyard  
[6966 3068 5307 0617]

Location: Zhenjiang, Jiangsu, PRC

Data: Another new-type catamaran passenger ship was launched here 4 October. Designed by the Jiangsu Ship Design Institute, this twin-bodied passenger vessel is equipped with 1,000 seats. It will ply the navigation route from Qinglong Port of Nantong and Liuhe of Taicang in Jiangsu.

Source: Nanjing XINHUA RIBAO in Chinese 4 Oct 83 p 1

Item: Xinle Shipyard  
[2450 2867 6644 5307 0617]

Location: Yin Xian, Zhejiang, PRC

Data: Designated as a unit by the Zhejiang Province Shipbuilding Company to build 330-ton coastal freighters, this local government-owned shipyard has gone into mass production. The price per vessel is 400,000 yuan.

Source: Fuzhou FUJIAN RIBAO in Chinese 5 Nov 83 p 2

Item: Laoyeling Tunnel  
[5071 3639 1545 7143 6670]

Location: Shaanxi, PRC

Data: Construction of this project, the longest highway tunnel in Shaanxi Province, has begun. Located on the Qinling Range, 25 kilometers from the Western Mountains of Taishan, and 1,710 meters above sea level, this tunnel measuring 1,710 meters in length is expected to be completed in two years.

Source: Xi'an SHAANXI RIBAO in Chinese 9 Sep 83 p 1

### III. ELECTRONIC AND PRECISION EQUIPMENT INDUSTRIES

Item: Changzhou Navigation Instrument Plant  
[1603 1558 5300 3189 0308 0892 0617]

Location: Changzhou, Jiangsu, PRC

Data: Equipped with advanced processing machinery, this plant produces both mechanical and electrical devices. Its principal products include ship telephones, special telephones, monitor and alarm devices for engine rooms, gyrocompasses, standard time receivers ten-heads precision hole makers, digital coding quartz clocks, tape-recording devices, artificial kidney dialysers, and numerically controlled drawing machines.

Source: Beijing CHUANBO SHIJIE [SHIP WORLD] in Chinese and English 12 Oct 83 p 9

Item: Shanghai Institute of Electronic Physics  
[0006 3189 7193 1311 3670 3810 4282 4496 2076]

Location: Shanghai, PRC

Data: China's first X waveband ground scatterometer built by this institute passed an evaluation test here during the first 10 days of July 1983. The institute provided the department concerned with a prototype of the instrument last year. Tests conducted in the laboratories and fields showed that the technical performance of the meter has met the predetermined index and machinery operations were excellent. The scientists and technicians are now conducting research in an effort to further improve the instrument's performance.

Source: Shanghai DIANZI JISHU [ELECTRONIC TECHNOLOGY] in Chinese No 10, 1983  
p 39

Item: Shanghai Clock and Watch Parts Plant  
[0006 3189 6988 5903 0337 0115 0617]

Location: Shanghai, PRC

Data: In close cooperation with concerned scientific research departments and colleges, this plant has attained the wristwatch diamond bearing boring speed of 16 grain/second, reaching the advanced international level. Recently, on the basis of the high-speed laser processing principle, personnel here designed and built a high-speed laser cutting machine with a frequency rate reaching as high as 40 times. This new breakthrough has raised the application of high-speed laser technology to a new level.

Source: Shanghai JIEFANG RIBAO in Chinese 25 Sep 83 p 2

Item: Shanghai Telecommunication Equipment Plant No 6  
[0006 3189 7193 0207 6080 0271 0362 0617]

Location: Shanghai, PRC

Data: This plant specializes in manufacturing the "Yougong" [Excellent Work] brand communication equipment. Its products include transmitting antenna switchgear which can be operated under either manual or remote control, community television antenna, and community receiving antenna that serves six radio shortwave receivers.

Source: Shanghai DIANZI JISHU [ELECTRONIC TECHNOLOGY] in Chinese No 9, 1983 p 41

Item: Beijing Electronic Tubes Plant  
[0554 0079 7193 1311 4619 0617]

Location: Beijing, PRC

Data: The FU-914 cermet tube with an output of 400 kilowatts designed by this plant is the largest triode produced in this country. The tube's highest work frequency is 30 megacycle per second. It is primarily used on high-frequency welding unit and in other high-frequency heating.

Source: Beijing DIANZI SHIJIE [ELECTRIC WORLD] in Chinese No 2, 1983 p 8

Item: Baiyun Radio Plant  
[4101 0061 3541 4848 7193 0617]

Location: Guangzhou, Guangdong, PRC

Data: Since the beginning of 1983, this plant has put into production seven different types of recorders and eight different kinds of computers and computerized telephones, totaling 17 new products. For the January-September 1983 period, it has achieved an output value of 2.7 million yuan and realized a profit of 3.1 million yuan, registering increases of 1.25 times and 1.3 times respectively over 1982.

Source: Guangzhou NANFANG RIBAO in Chinese 1 Nov 83 p 1

Item: Shanghai Optical Instruments Plant No 2  
[0006 3189 0342 1331 0308 0892 1708 0617]

Location: Shanghai, PRC

Data: Using laser wavelength as the length datum for the first time, this plant has adopted the form of direct digital display to manufacture China's first JD005-J vertical laser length checking instrument, which passed the evaluation test recently. This instrument will help the domestic clock and watch, sewing machine, bearings, ship-building, instrument and meter, and precision machinery industries solve the problem of providing the length of measuring tools and precision parts with absolute precision measurements.

Source: Shanghai JIEFANG RIBAO in Chinese 28 Oct 83 p 2

Item: Yunnan Television Set Plant  
[0061 0589 7193 6018 2623 0617]

Location: Kunming, Yunnan, PRC

Data: During the January-September 1983 period, the workers here prefulfilled their annual output quota of 30,000 television sets and realized a profit of 1.3 million yuan, a 2.95-fold increase over 1982. Personnel here are currently striving to turn out 15,000 TV sets above the norm.

Source: Kunming YUNNAN RIBAO in Chinese 18 Oct 83 p 1

Item: Yonghong Materials Plant  
[3057 4767 0892 2624 0617]

Location: Tianshui, Gansu, PRC

Data: One of the major factories making semi-conductor integrated circuits in the country, this state-owned plant has since the beginning of 1983 developed and manufactured 42 kinds of new products. During the first three quarters of this year, it has overfulfilled the annual gross industrial output value plan by 177.9 percent. A recent Lanzhou meeting presided over by the Ministry of Electronics evaluated and approved 29 product varieties, including semi-conductor analogous integrated circuits, developed and produced by this plant.

Source: Lanzhou GANSU RIBAO in Chinese 17 Nov 83 p 1

Item: Hebei Province Electric Cable Plant  
[3109 0554 4164 7193 4968 0617]

Location: Huolu County, Hebei, PRC

Data: Designated by the Ministry of Post and Telecommunications as a factory specialized in making all-plastic communication electric cables, this plant supplies the users with plastic urban telephone electric cables, distribution cables, rural telephone cables, and iron-core parallel telephone lines. Its NHLYY 1x4xl.6--30 solid plastic three-circuit carrier electric cable and HYV 0.5 series urban telephone electric cable were appraised in 1981 as high-quality products of Hebei Province.

In a brief announcement carried in the source, the plant informs the customers that its contracts for goods in 1983 have been filled and is now taking orders for 1984.

Source: Beijing DIANXIN JISHU [TELECOMMUNICATION TECHNOLOGY] in Chinese No 9, 1983 p 48 and backcover

Item: Shanghai Communication Equipment Plant  
[0006 3189 6639 0207 6080 0271 0617]

Location: Shanghai, PRC

Data: Formerly known as Plant No 519 and subordinate to the Ministry of Post and Telecommunications, this plant advertises for sale its BD477 electric teletypewriter which has three speeds--50, 75, and 100 (wpm).

Source: Beijing DIANXIN JISHU [TELECOMMUNICATION TECHNOLOGY] in Chinese No 9, 1983, front cover

#### IV. CHEMICAL INDUSTRY

Item: Kunming Sodium Tripolyphosphate Plant  
[2492 2494 0005 5112 4340 6808 6871 0617]

Location: Kunming, Yunnan, PRC

Data: By mid-August this year, this plant's first-phase project has been completed and preparations for trial operations have also been made. The workers are now undergoing intensive training. Complete sets of equipment for the yellow phosphorus workshop of this plant, a key state project, are imported and the technicians and workers must familiarize themselves with the foreign-made equipment. Water supply from the pumping and purification stations is normal; the 18-kilometer-long 220,000 volts high voltage transmission line from Wenquan (Hot Spring) to the Maanshan Transformer Station has been linked. Three boilers and three coal gas furnaces have begun supplying coal gas, oxygen, nitrogen, compressed air, and steam; and the special railway has transported some of the anthracite, coke, asphalt and soda ash to the plant.

Source: Kunming YUNNAN RIBAO in Chinese 29 Sep 83 p 1

Item: Jindong Chemicals Plant  
[3160 2639 0553 1562 0617]

Location: Tianjin, PRC

Data: In collaboration with the Chemistry Department of the Fudan University, this plant has successfully developed a new technique of extracting blue oxidized tungsten by means of the internal reduction method. The new technique was evaluated at a meeting held at the Fudan University by the Ministry of Education on 31 October. In 1980, the Chemistry Department of the Fudan University was assigned the task to conduct research on the new technique. Under the leadership of Professor Gu Qidong, this project was declared successful following three years of research work. Metallic tungsten and tungsten products have wide applications in the machine-building, metallurgical, and chemical industries. China ranks first in the world in tungsten deposits, and the successful research on the new technique of extracting blue oxidized tungsten will certainly improve the tungsten production in China.

Source: Shanghai JIEFANG RIBAO in Chinese 1 Nov 83 p 1

Item: Nanjing Chemicals Corporation  
[0589 0070 0553 1562 0361 0674]

Location: Nanjing, Jiangsu, PRC

Data: Workers of the No 3 Vessel Workshop of this corporation's chemical machinery plant have built China's first 2.8-meter urea synthesis tower with an annual output capacity of 520,000 tons. Built for the Zhenhai Petrochemical Plant in Zhejiang, this tower measures 36 meters in length and weighs 322 tons and has a volume of 200 cubic meters. The Ministry of Chemical Industry called a quality assessment meeting at the end of October and highly commended the quality of this piece of equipment.

Source: Nanjing XINHUA RIBAO in Chinese 5 Nov 83 p 1

Item: Qixiashan Chemical Fertilizer Plant  
[2722 7209 1472 0553 5142 0617]

Location: Nanjing, Jiangsu, PRC

Data: As of 5 October, this plant, which has the highest nitrogen fertilizer output in Jiangsu Province, has produced 223,600 tons of synthetic ammonia and 370,700 tons of urea, surpassing the annual state plan. The plant is now equipped with large-sized imported facilities, which permitted the energy consumption per ton ammonia to drop 6.7 percent from the same 1982 period and helped to substantially reduce the production cost.

Source: Nanjing XINHUA RIBAO in Chinese 13 Oct 83 p 3

Item: Qinghai Potassium Fertilizer Plant  
[7230 3189 6905 5142 0617]

Location: Qaidam Basin, Qinghai, PRC

Data: Preparations for the construction of this project are under way. Erection of the 35,000-volt high voltage transmission from Golmud City to the salt field, measuring 65 kilometers in length, was completed at the end of July. Three imported 410-horsepower bulldozers are now in operation at the construction site and two large excavators have also arrived and will be put into operation shortly. The first phase project, which is scheduled for completion in 1987, will have an annual output comparable to four times the current national potassium fertilizer production.

Source: Beijing RENMIN RIBAO in Chinese 19 Aug 83 p 2

Item: Urumqi General Petrochemical Plant  
[3527 7627 2606 7841 4258 0553 4920 0617]

Location: Urumqi, Xinjiang, PRC

Data: The refinery of this plant was rated as a good project by the State Examination Committee for Project at the end of October. The construction of the refinery of this plant started in 1975. The refinery is designed to process 1.5 million metric tons of crude oil annually. By the end of 1982, its five sets of crude oil processing equipment and relevant auxiliary projects were successively completed and put into trial operation.

Source: Beijing XINHUA Domestic Service in Chinese 0023 GMT 4 Nov 83 OW

Item: Shanghai General Petrochemical Plant  
[0006 3189 4258 0553 4920 0617]

Location: Shanghai, PRC

Data: One of the 70 key projects of China, this plant has turned out its first batch of polyester chips, a spokesman of the plant announced here on 17 November. This marks the start of trial production in the second phase of the plant's construction, the spokesman said. The products turned out in the past three days by one of the six polyester installations meet all quality demands for viscosity, color and moisture as described in the contract, he added. The second phase construction of the plant started in 1980. The polyester units there, imported from Japan, have a total capacity of 200,000 tons of polyester chips annually, which can be made into 180,000 tons of fibers, equivalent to those produced by nearly 267,000 hectares of high-yield cotton fields.

Source: Beijing XINHUA in English 1458 GMT 17 Nov 83

V. FUEL AND POWER INDUSTRIES

Item: Plant No 404  
[0934 7190 0934 0617]

Location: Probably Lanzhou, Gansu, PRC

Data: [1] This numbered plant's 25th anniversary was celebrated here on 15 October 1983 at a gathering attended by hundreds of local (provincial) government and trade union representatives. In the past 25 years, this plant has received awards and commendations from the Ministry of Nuclear Industry on 44 occasions for its major contributions to the development of the country's nuclear industry.

[2] A memorial service was held here on 15 November for the late Zhang Tongxing [1728 0681 2502]. Leading members of the Ministry of Nuclear Industry, the Standing Committee of the Gansu People's Congress, the Gansu CPCC, the Gansu General Trade Union, and the Gansu Scientific Commission attended the meeting. Zhang Tongxing was hailed as an outstanding representative of the national defense front and of the scientific and technical workers. At the meeting, his son, Zhang Jing [1728 0079], pledged to follow his father's footsteps and continue to fight for the cause of atomic energy. Zhu Linfang [4376 7792 5364], who delivered the memorial speech, is manager of this plant.

Source: [1] Lanzhou GANSU RIBAO in Chinese 18 Oct 83 p 1  
[2] Lanzhou GANSU RIBAO in Chinese 18 Nov 83 p 1

Item: Tianjin Oil Refinery  
[1131 3160 3550 3111 0617]

Location: Tianjin, PRC

Data: During the January-September 1983 period, this plant, which is primarily responsible for the supply of liquefied petroleum gas to Tianjin, has supplied the city with 22,942 tons of liquefied gas, an increase of 3,655 tons over the same 1982 period. Despite that the sale of this byproduct accounts for only a small percentage of its total revenue, the leadership of the plant has placed the importance of its liquified petroleum production and made extra efforts toward raising the output of this product. Its current output of liquefied gas has jumped from an average of 5 percent last year to 6.8 percent.

Source: Tianjin TIANJIN RIBAO in Chinese 1 Nov 83 p 1

Item: Lanzhou Oil Refinery  
[5695 1558 3550 3111 0617]

Location: Lanzhou, Gansu, PRC

Data: Since it started operation 25 years ago, this refinery has fulfilled its gross industrial output value plan of 12.3 billion yuan, realized profits and taxes totaling 4.65 billion yuan and provided the state with accumulations comparable to 10.4 times the original value of all fixed assets. Its production facilities have increased from 16 sets to 52 sets and its product varieties have jumped from 16 to 270.

Source: Lanzhou GANSU RIBAO in Chinese 26 Oct 83 p 1

Item: Guangzhou City Coal Mine No 4  
[1639 1558 1579 4574 0934 3561 4349]

Location: North of Guangzhou, Guangdong, PRC

Data: After nearly 6 years of construction work, this mine, one of the key projects in Guangzhou City, was officially put into operation on 31 October. The largest pair of vertical coal shafts in the area, this project has a design annual output of 100,000 tons of anthracite. Its geological reserves are more than 5 million tons and its extractable deposits are 3.5 million tons.

Source: Guangzhou GUANGZHOU RIBAO in Chinese 1 Nov 83 p 1

Item: Maoming Petroleum Industrial Company  
[5399 0682 4258 3111 1562 2814 0361 0674]

Location: Maoming, Guangdong, PRC

Data: A large hydrocracking plant imported from Japan went into operation earlier this month here. This project, subordinate to this company, is designed to refine 800,000 tons of crude oil and produce 700,000 tons of petroleum products annually. The crude oil comes mainly from Daqing, China's largest oilfield in Heilongjiang Province, a company spokesman said. The plant, which involved an investment of nearly 200 million yuan, has refined 400,000 tons of crude oil and produced 390,000 tons of kerosene, diesel oil and naphtha since it started trial-operation a year ago. Installation of the plant began in November 1980 and was completed in one and a half years, he said.

Source: Beijing XINHUA in English 1203 GMT 14 Oct 83 OW

Item: Ningxia Coal Import and Export Branch Company  
[1337 1115 3561 8955 6651 0427 0656 0433 0361 0674]

Location: Ningxia, PRC

Data: The export of the Taixi coal from Ningxia, which is noted for its low contents of ash, phosphorus, and sulfur, has increased this year. By the end of July, 107,269 tons of the local coal have been exported. This is an increase of 16.6 percent over the same 1982 period.

Source: Yinchuan NINGXIA RIBAO in Chinese 30 Aug 83 p 1

VI. MACHINE-BUILDING INDUSTRY

Item: Sino-Czechoslovakia People's Friendship Plant  
[0022 2212 0086 3046 0645 6146 0617]

Location: Shenyang, Liaoning, PRC

Data: Formerly known as the Shenyang Machine Tool Plant No 2, this plant, the largest manufacturer of drilling and boring machines in China, specializes in the production of radial drilling machines, horizontal boring machines, floor-type boring machines, floor-type boring and milling machines, jig boring machines, and large-type honing machines. It covers an area of 300,000 square meters with building area of 94,700 square meters. The plant currently employs 5,900 workers and staff members, of whom 530 are technical personnel. It has 19 production workshops, metrological inspection center, physics and chemical laboratory, product and technology research laboratory, and a computer room. The Shenyang Drilling and Boring Machine Tool Research Institute is also established here, and it carries out the technical development and research work for the drilling and boring machine building industry of the whole country.

Source: Beijing JICHUANG [MACHINE TOOL] in Chinese No 9, 1983 p 47

Item: Nantong Machine Tool Plant No 2  
[0589 0639 2623 1643 4574 1708 0617]

Location: Nantong, Jiangsu, PRC

Data: An important factory designated by the Ministry of Machine-Building Industry to produce surface grinders, this plant currently employs 450 workers and staff members and covers a total area of 45,000 square meters, with a building area about 20,000 square meters. It is equipped with 193 machines, of which 124 are metal cutting machines. The plant also has a thermostat workshop covering 3,300 square meters of floor space for high precision machining and accurate measurement. Its principal products include vertical spindle round table surface grinder model M7475B, horizontal spindle rectangular table surface grinder model M7120A, MM7120, MG7120, and M7130. The plant also produces universal cylindrical grinder model MQ1420. In addition, it has developed new series of electro-etching machines, such as DJ39, D3932, DW3910, and DY3903 automatic or portable electroetching machines.

Source: Beijing JICHUANG [MACHINE TOOL] in Chinese No 10, 1983 p 45

Item: Zhenjiang Marine Diesel Engine Plant  
[6966 3068 5307 5306 2693 3111 2623 0617]

Location: Guantang Bridge, Zhenjiang, Jiangsu, PRC

Data: Under the China State Shipbuilding Corporation, this plant specializes in manufacturing Series 23 and 28 medium speed diesel engines under M.A. N.-B&W license. In addition to the above-mentioned diesel engines, it manufactures spare parts for diesel engine and injector test rigs. The plant is equipped with complete production machinery and testing facilities, including electric and hydrodynamic brakes for testing medium and high speed diesel generating sets and propeller characteristics of main engines.

Source: Beijing CHUANBO SHIJIE [SHIP WORLD] in Chinese and English 12 Oct 83  
p 48

Item: Zhenjiang Marine Auxiliary Machinery Plant  
[6966 3068 5307 5306 6534 2623 0617]

Location: Jianbi, Zhenjiang, Jiangsu Province, PRC

Data: Subordinate to the China State Shipbuilding Corporation, this plant specializes in the manufacture of marine auxiliary machinery. Its products include Type 3/5 electric cargo winch, 10-T automatic mooring winch, 4.0-T gravity collapsible davit and 4-T motor-incorporated davit. It is equipped with iron casting, steel casting, heat treatment, and metal-cutting machinery. It is also equipped with chemical and physics laboratories and technically advanced deck machinery testing platforms, which will insure the quality of its products.

Source: Beijing CHUANBO SHIJIE BAO [SHIP WORLD] in Chinese and English  
12 Oct 83 p 6

Item: Haiguang Machinery Plant  
[3189 0342 2623 2750 0617]

Location: Western suburbs of Taizhou, Jiangsu, PRC

Data: A subordinate unit of the China State Shipbuilding Corporation, this plant specializes in the manufacture of air compressors and has been making 64-115 free-piston air compressors, Type CZO.27/150, CZO.42/150 and various other types of marine air compressors for years. According to the compensation trade agreement between the China Shipbuilding Trading Company, Ltd. and the Tanabe Pneumatic Machinery Company, Ltd., this plant has the right to use the technology of air compressors of LSHC series, and the first batch of the products has been delivered to the Japanese firm.

Source: Beijing CHUANBO SHIJIE [SHIP WORLD] in Chinese and English 12 Oct 83 p 44

Item: Dongfang Electromachinery Plant  
[2639 2455 7193 2623 0617]

Location: Sichuan Province, PRC

Data: Recently this plant has successfully carried a negative sequence capacity of a 200,000-KW steam turbo generator, which has been a major research project in the country. More than 10,000 data obtained from the test show that the negative sequence capacity of the 200,000-KW large steam-turbo generator built by this plant is completely up to the international standards.

Source: Beijing GONGREN RIBAO in Chinese 19 Oct 83 p 2

Item: Guangming Equipment and Materials Plant  
[0342 2494 0892 2624 0617]

Location: Sichuan, PRC

Data: This plant has built China's first laser crystal workshop. Since it was put into batch production early this year, the workshop has been operating normally and has prefulfilled its annual production plan two months ahead of schedule. Commonly known as "synthetic diamond," the laser crystal is considered the best raw material for solid laser component and only a few countries are capable of producing it. The first batch of laser crystals produced by the workshop has met the international standards.

Source: Chengdu SICHUAN RIBAO in Chinese 25 Oct 83 p 2

Item: Hangzhou Power Generating Equipment Plant  
[2635 1558 4099 7193 6080 0271 0617]

Location: Hangzhou, Zhejiang, PRC

Data: By the end of 1982, this plant has signed contracts with the Philippines, the United States, Thailand, Nepal, and Malaysia for 91 sets of equipment, 31 sets of which have been delivered, earning for the state 4.45 million U.S. dollars in foreign exchange. In 1983, this plant has signed annual contracts with foreign firms amounting to nearly 6 million U.S. dollars, a 40-percent rise over the same 1982 period.

Source: Beijing RENMIN RIBAO in Chinese 19 Aug 83 p 2

Item: Wangjiang Machinery and Equipment Plant  
[2598 3068 2623 0892 0617]

Location: probably in Chengdu, Sichuan, PRC

Data: Identified as one of the plants in the defense industrial system in Sichuan Province taking part in the production of civilian goods, this plant has manufactured 88 types and 627 sets of equipment for the light and textile industries. The cigarette rolling equipment built by them has become a series and the plant has been named by the Ministry of Light Industry as one of the officially designated cigarette machinery plants in the country.

Source: Chengdu SICHUAN RIBAO in Chinese 15 Nov 83 p 2

Item: Changan Machinery and Equipment Plant  
[7022 1344 2623 0892 0617]

Location: Chongqing, Sichuan, PRC

Data: While fulfilling its military product output assignment, this plant is making vigorous efforts to supply high-quality products for the key state energy construction projects. Its 17.5-inch tri-cone bits are primarily for drilling and exploring petroleum gas well surface layers. In 1982, the plant provided the Daqing, Shengli, Huabei, Xinjiang, and Zhongyuan oilfields and the Sichuan Petroleum Gas Field with 190 "Silver Prize" bits. It delivered 350 additional bits during the January-August 1983 period.

Source: Chengdu SICHUAN RIBAO in Chinese 15 Oct 83 p 2

Item: Plant No 524  
[0063 0059 0934 0617]

Location: Northern suburbs of Xi'an City, Shaanxi, PRC

Data: MG260A woodwork combination machine tool is one of this plant's products. This numbered plant is under the jurisdiction of the Ministry of Nuclear Industry.

Source: Lanzhou GANSU RIBAO in Chinese 15 Nov 83 p 4

Item: (Taicang) Xian Machinery Plant  
[1132 0221 4905 2623 2750 0617]

Location: Taicang County, Jiangsu, PRC

Data: An 80-KW plasma spray painting device, the first of its kind made in China, has recently passed quality tests in Jiangsu Province. This is a principal piece of equipment for thermal spray painting, a new technology to be popularized during the Sixth 5-Year Plan period. It was designed by the No 625 Research Institute of the Ministry of Astronautics Industry and built by this plant,

Source: Beijing XINHUA Domestic Service in Chinese 0020 GMT 27 Nov 83 OW

Item: Nantong General Cigarette Filter Tips Plant  
[0589 6639 3533 3459 0878 4920 0617]

Location: Nantong, Jiangsu, PRC

Data: At a meeting which ended this date, Zhu Jian [2612 0494], leading member of the project group and mayor of Nantong City, urged the departments concerned in the city to start the construction of this plant project as soon as possible. This is one of 279 state projects slated for construction during the 6th Five-Year Plan period. Its completion will play a significant role in filling a void in China's cigarette filter tip production and in increasing the economic returns in cigarette production.

Source: Nanjing XINHUA RIBAO in Chinese 28 Oct 83 p 1

VIII. MISCELLANEOUS INDUSTRIES

Item: Huaihai Cement Plant  
[3232 3189 3055 3136 0617]

Location: Northern part of Xuzhou City, Jiangsu, PRC

Data: Construction of this project, one of the key construction projects in the country, was officially started on 1 July 1981. It has a design annual output capacity of 1 million tons of ordinary silicate cement. Complete sets of equipment are imported from Romania. The entire technical and electrical designs are also provided by Romania. The suspension pre-heating drying process is employed. It will attain the international level of the seventies upon completion. To date, over 100 support designs (facilities) have been completed and most of the 100,000-plus cubic meters concrete projects, as well as the limestone mine, have been finished. The track-laying of 4.9-kilometer special railway has begun and the 110,000-kilovolt high-voltage transmission line has been erected. Sixteen thousand tons of equipment and all kinds of materials have arrived at the construction site.

Source: Beijing ZHONGGUO JIANCAI [CHINA BUILDING MATERIALS] in Chinese No 4, 1983 p 33

Item: Huaihai Cement Plant  
[3232 3189 3055 3136 0617]

Location: Northern part of Xuzhou City, Jiangsu, PRC

Data: Location map of the Huaihai Cement Plant



A. Huaihai Cement Plant

Source: Beijing ZHONGGUO JIANCAI [CHINA BUILDING MATERIALS] in Chinese No 4, 1983 p 33

Item: Ningguo Cement Plant  
[1337 0948 3055 3136 0617]

Location: Anhui Province, PRC

Data: Construction of the No 1 power source of this plant, the Changlongshan-Ningguo Power Transmission Line measuring 153 kilometers in length, is in full swing. The key item of this project, a 220,000-volt large transformer station, is under construction. Its two main transformers have a design capacity of 240,000 KVA. Installation of the first transformer is expected to be completed in the first quarter of 1984. The 110 kilovolts transmission and transformer project from Xuancheng to Ningguo, totaling 35 kilometers in length, was commissioned in early April this year. A total of 8,392 pieces of equipment of all sizes are being imported for this cement plant project.

Source: Beijing ZHONGGUO JIANCAI [BUILDING MATERIALS IN CHINA] in Chinese  
No 5, 1983 p 33

Item: Benxi Cement Plant  
[2609 6007 3055 3136 0617]

Location: Benxi, Liaoning, PRC

Data: A new cement production line using the rotary kiln with a precalcinator for production with a daily capacity of 1,200 tons of cement clinker was installed at this plant and put into production on a trial basis on 27 September 1983. This production line, the largest of its kind in China, can increase cement output 1.5 times as compared with the old kiln.

Source: Shenyang LIAONING RIBAO in Mandarin 28 Sep 83 p 1 SK

Item: Xinyang Building Materials Equipment Plant  
[0207 7122 1696 6080 0271 0617]

Location: Xinyang, Henan, PRC

Data: China's first XW208 double-axle mixed clay purifier trial produced by this plant has undergone one year of successful tests at the Changshu Xian Brick and Tile Factory in Jiangsu. The grade of standard bricks made with clay processed through this purifying machine reaches 3006. This plant is now prepared to batch produce the high-quality bricks for the brick and tile factories in the country.

Source: Beijing ZHONGGUO JIANCAI [BUILDING MATERIALS IN CHINA] in Chinese  
No 4, 1983 p 36

Item: Youyi Sugar Mill  
[0645 6146 4743 0617]

Location: Jiamusi, Heilongjiang, PRC

Data: This plant resumed operation on 28 October following an expansion project. At this juncture, its daily sugarbeet processing capacity has increased from 1,500 tons to 3,000 tons, making it the second large-scale sugarbeet processing enterprise in the country that has doubled its capacity. The expansion project cost the plant only 27 million yuan, as against the investment cost of a new sugar mill with the same daily processing capacity.

Source: Harbin HEILONGJIANG RIBAO in Chinese 1 Nov 83 p 1

Item: Xibei (Northwest) Rubber Plant  
[6007 0554 2895 5231 0617]

Location: Xi'an, Shaanxi, PRC

Data: By putting greater efforts toward the production and sale of marketable civilian goods and the reduction of raw material and energy consumption, this plant was able to realize a profit of 8.15 million yuan during the January-September 1983 period, an increase of 32.95 percent over the same period of its most profitable year. Getting down from its high horse as a "defense plant," the enterprise has decided to develop 10 new product varieties of civilian goods, including television fluorescent screen grinding plates, special high-pressure steel wire braided rubber tubes, and paper pulp filtering rubber belts. It has either stopped or cut down the production of unprofitable products and is turning out more marketable goods. In 1982, ten of its product varieties had caused it to incur a loss of 660,000 yuan.

Source: Xi'an SHAANXI RIBAO in Chinese 29 Oct 83 p 1

Item: Changcheng Rubber Plant  
[7022 1004 2895 5231 0617]

Location: Yinchuan, Ningxia, PRC

Data: The Yinchuan Rubber Plant has reached an agreement with this plant on transferring the production of "Liupanshan" brand bicycle and pushcart tires to this plant whose recapping workshop has been idle for some time due to a shortage of old tires that need recapping. Because of limited space, the Yinchuan Rubber Plant had to shift the production of bicycles and pushcart tires to this plant in order to concentrate its efforts on the production of truck tires. This agreement was signed in June this year. According to the agreement, the Yinchuan Rubber Plant turned over without compensation equipment with a net worth of 120,000 yuan to this plant, and this plant also purchased the molds, parts and accessories, and tools, valued at 90,000 yuan, "belonging to the circulating funds." This plant is now installing the 49 pieces of equipment that have been moved into the factory.

Source: Yinchuan NINGXIA RIBAO in Chinese 21 Oct 83 p 2

Item: Lanzhou City Oil and Fat Processing Plant  
[5695 1558 1579 3111 0502 0617]

Location: Lanzhou, Gansu, PRC

Data: As of the end of September, this plant has realized a profit of 1.21 million yuan, a marked increase over last year. Equipped with five model 200 oil presses and employing 132 workers, this plant raised its output at the end of September to 3,483 tons, an increase of 28 percent over the same 1982 period. Its output value has reached 7,176,300 yuan, a 25.3-percent increase over the comparable period of last year. The leadership of the plant attributed its success to improved business management.

Source: Lanzhou GANSU RIBAO in Chinese 23 Oct 83 p 2

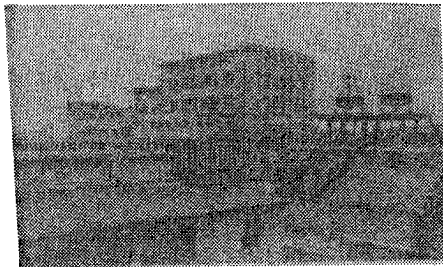


Fig. 1 View of the Fuping Dairy Products Plant in Shaanxi Province, which has recently gone into production. It has an annual output of 2,000 tons.  
[Source: Lanzhou GANSU RIBAO in Chinese 31 Oct 83 p 3]

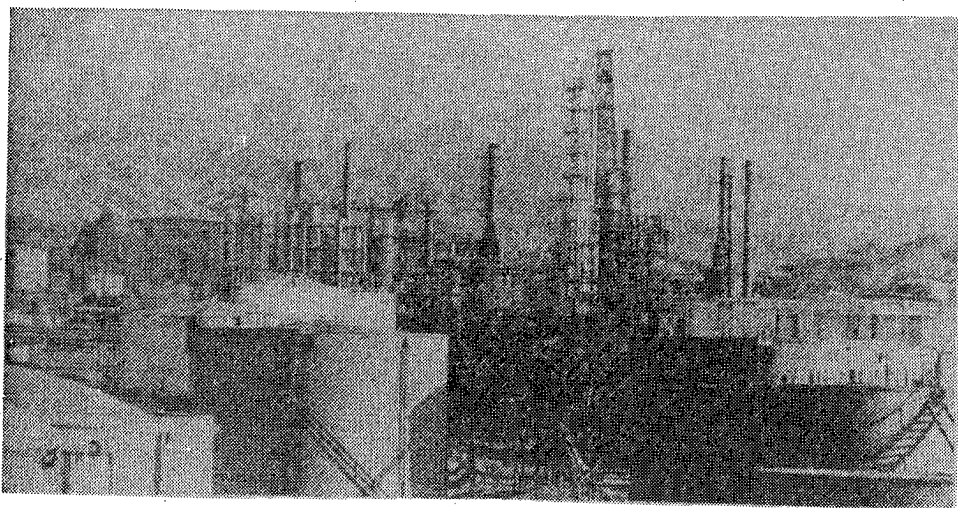


Fig. 2 Photograph of the Yumen Oil Refinery in Gansu Province  
[Source: Lanzhou GANSU RIBAO in Chinese 26 Jun 83 p 1]

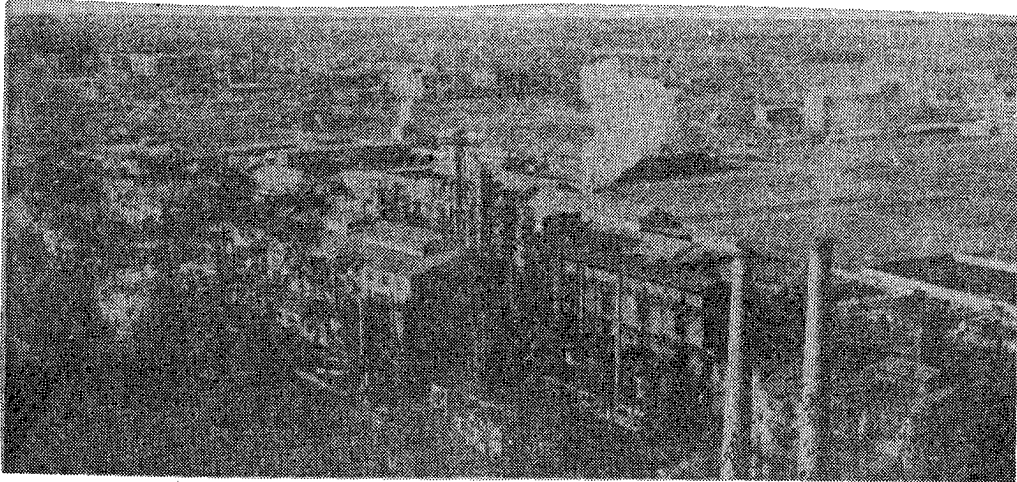


Fig. 3 View of the Baoji Nitrogenous Fertilizer Plant in Shaanxi  
[Source: Xi'an SHAANXI RIBAO in Chinese 10 Sep 83 p 1]

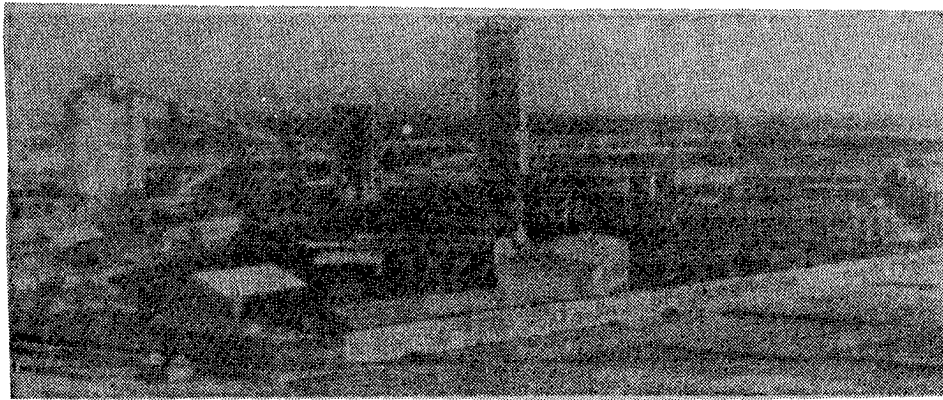


Fig. 4 Photograph of the Yaoqiao Mine in the Datun Mining Zone in Jilin Province.  
Two other mines, Xuzhuang and Kongzhuang Mines, have also been built here.  
[Source: Nanjing XINHUA RIBAO in Chinese 2 Nov 83 p 2]

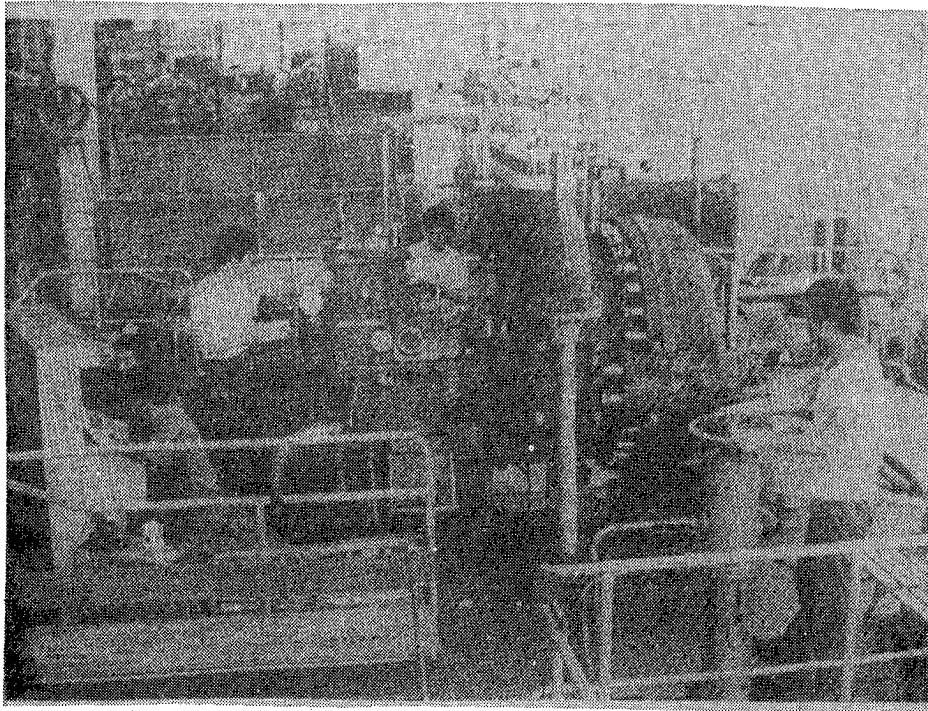


Fig. 5 Photo of a new residual heat steam turbine built by the Qingdao Steam Turbine Plant being tested before leaving the plant. The turbine uses residual or low heat in its operations, thus effecting substantial savings in energy.

[Source: Jinan DAZHONG RIBAO in Chinese 7 Aug 83 p 1]

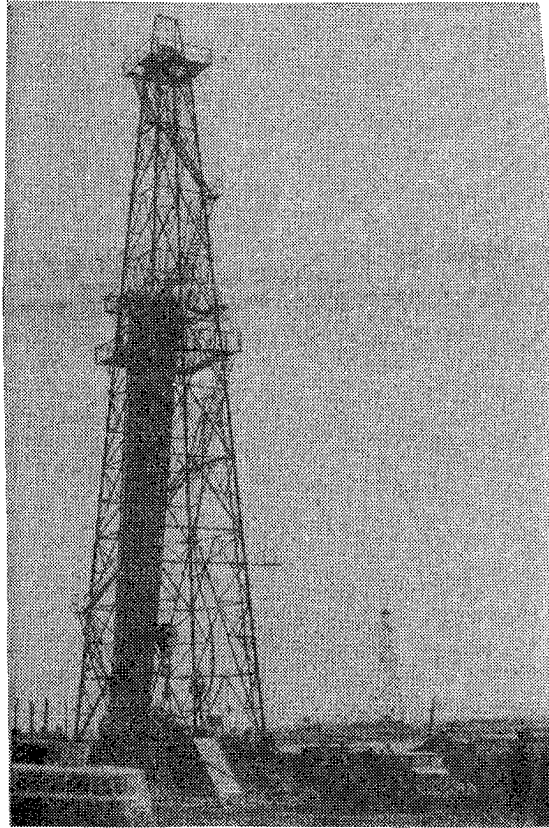


Fig. 6 A sectional view of the newly developed oil zone of the Shengli Oilfield. During the first 7 months of 1983, the Shengli Oilfield has produced 10,440,000 tons of crude oil, registering an increase of 10.7 percent over the same 1982 period and producing 978,000 tons of crude oil above the norm.

[Source: Jinan DAZHONG RIBAO in Chinese 7 Aug 83 p 1]

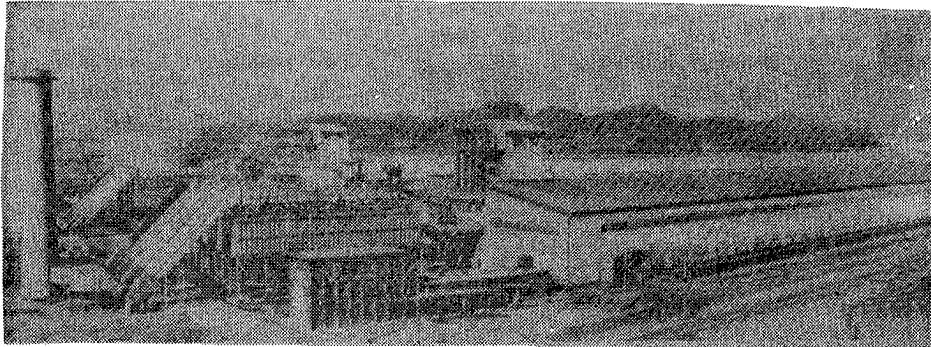


Fig. 7 Another view of the Guizhou Aluminum Plant, which has a design annual electrolytic aluminum output of 80,000 tons.  
[Source: Shanghai JIEFANG RIBAO in Chinese 6 Nov 83 p 3]

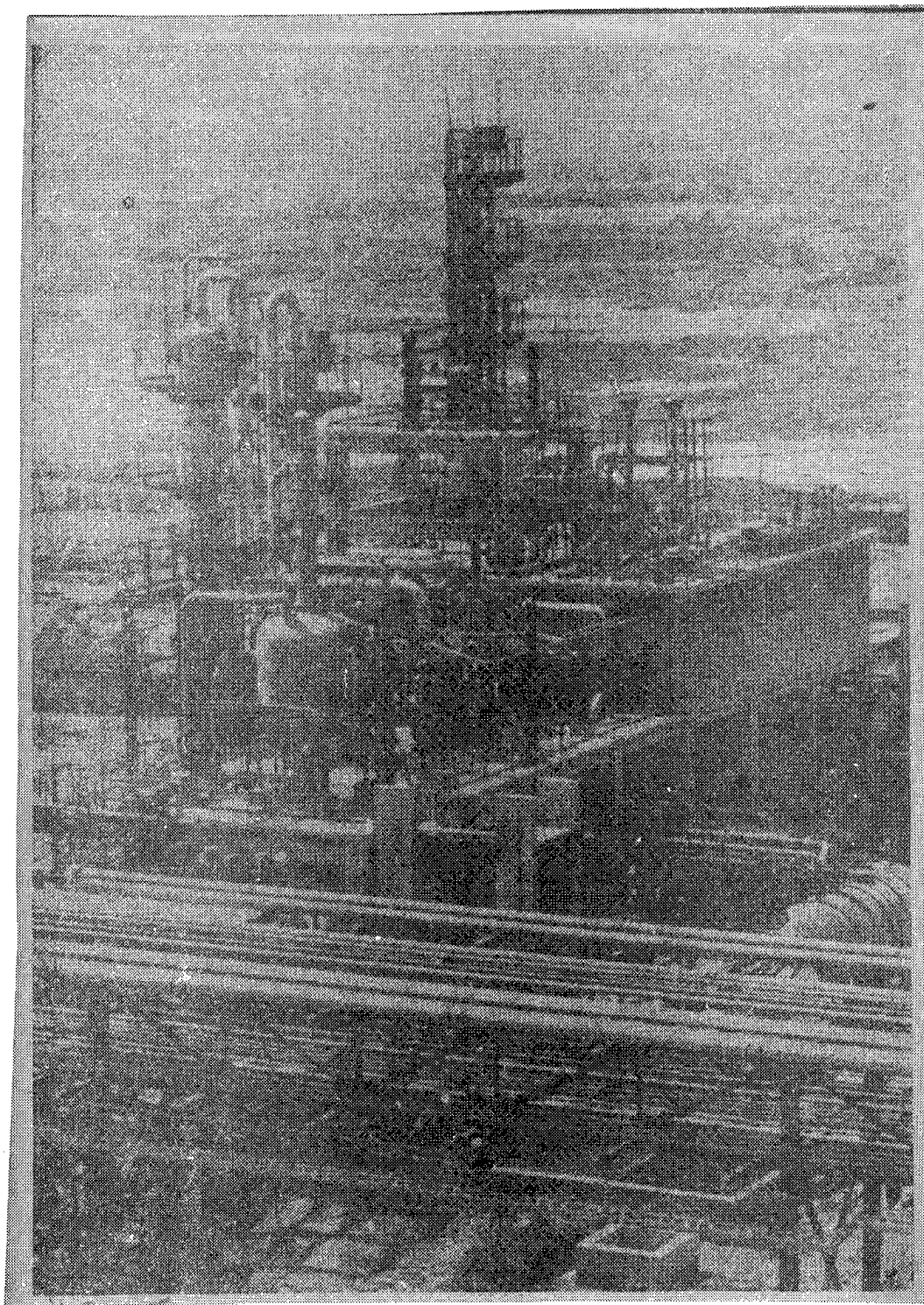


Fig. 8 An ethylene glycol recovery facility of the Yizheng Chemical Fiber Company in Jiangsu.  
[Source: Nanjing XINHUA RIBAO in Chinese 29 Aug 83 p 4]

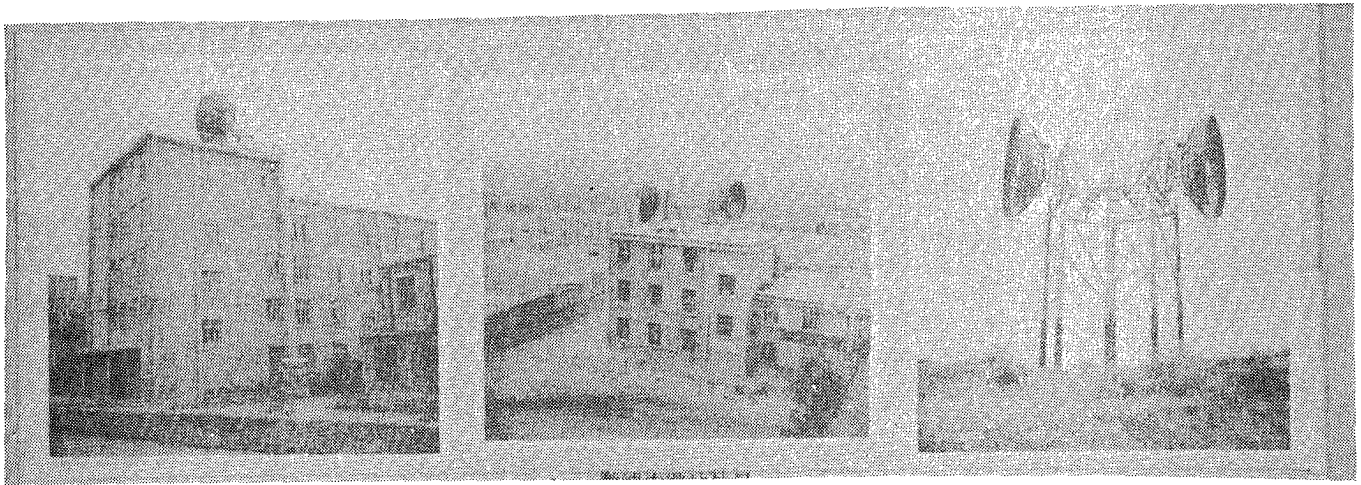


Fig. 9 Photos of microwave communications project built by the Xi'an Microwave Equipment Plant under the Ministry of Post and Telecommunications for the Hancheng Mining Bureau in Shaanxi: (A) outside view of the microwave equipment room; (B) external view of the microwave intermediate relay station; and (C) reactive intermediate relay station.  
 [Source: Beijing DIANXIN JISHU [TELECOMMUNICATION TECHNOLOGY] in Chinese No 11, 1983, inside frontcover]

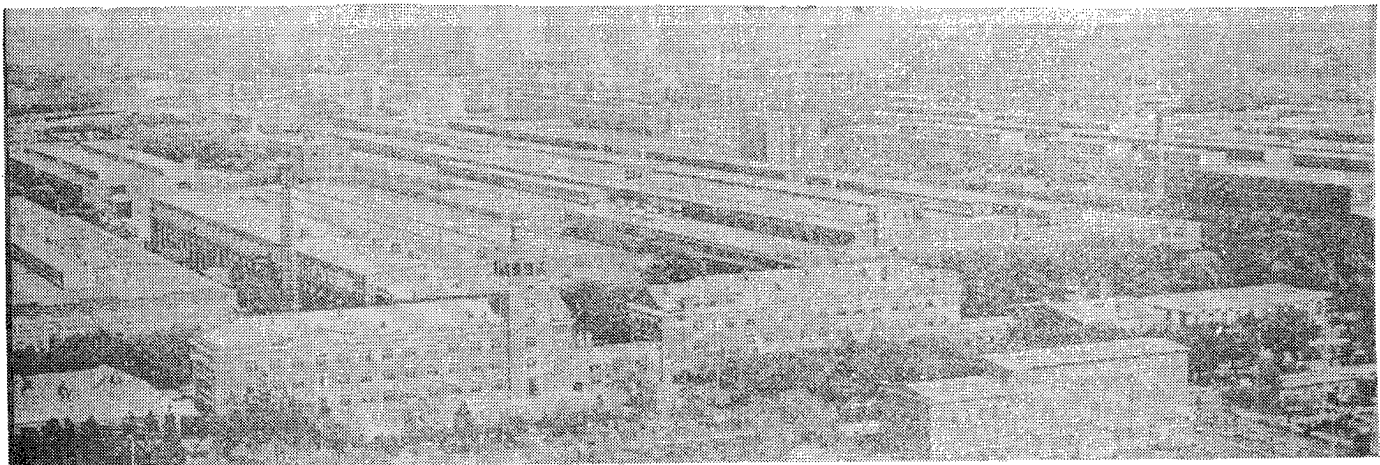


Fig. 10 A bird's eye view of the Dongbei [Northeast] Light Alloy Processing Plant in Harbin, Heilongjiang  
 [Source: Beijing ZHONGGUO-ZHILIANG GUANLI [QUALITY CONTROL IN CHINA] in Chinese No 10, 1983, inside frontcover]



Fig. 11 View of the Sino-Czechoslovakia People's Friendship Plant in Shenyang City  
[Source: Beijing JI CHUANG [MACHINE TOOL] in Chinese No 9, 1983, backcover]

# 临 湘



Fig. 12 A section of the Yueyang General Chemicals Plant in Linxiang of northern Hunan  
[Source: Changsha HUNAN HUABAO [HUNAN PICTORIAL] in Chinese No 10, 1983 p 19]



Fig. 13 A section of the Changchun Motor Vehicle Manufacturing Plant No 1  
[Source: Changchun JILIN HUABAO [JILIN PICTORIAL] in Chinese  
No 5, 1983 pp 2-3]

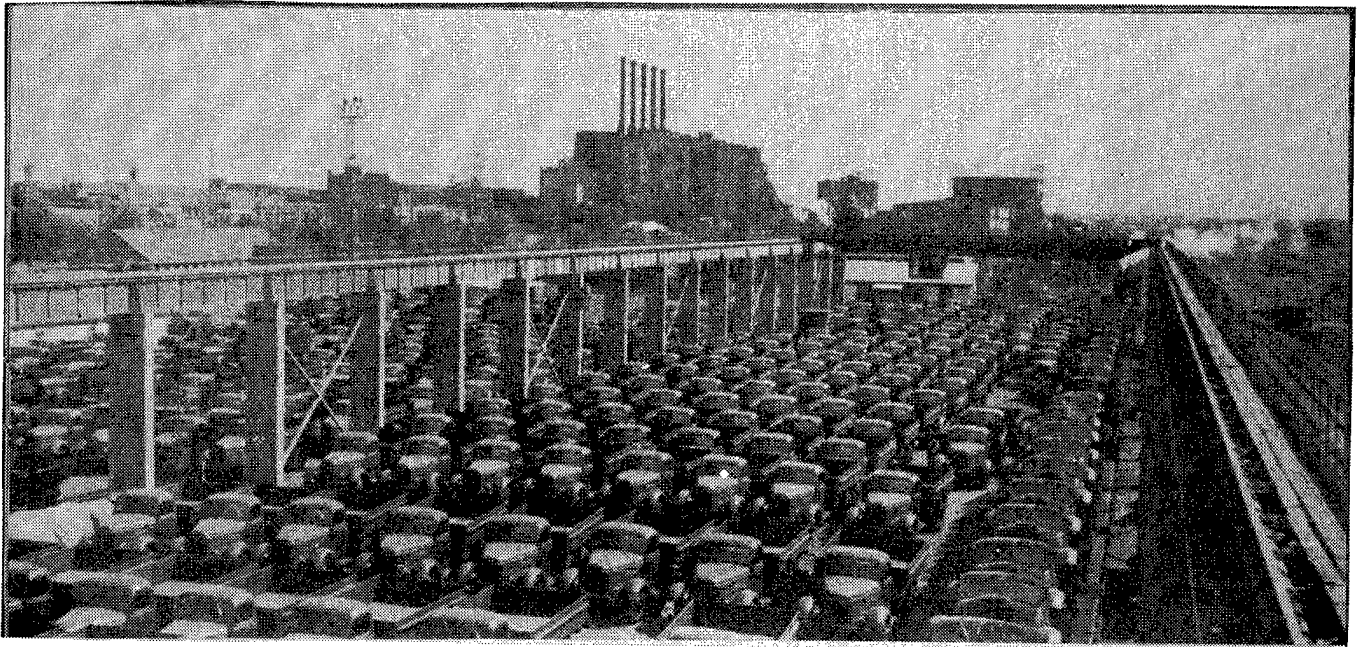


Fig. 14 The forging subplant of the Changchun Motor Vehicle Manufacturing Plant  
No 1  
[Source: Changchun JILIN HUABAO [JILIN PICTORIAL] in Chinese No 5,  
1983 p 3]

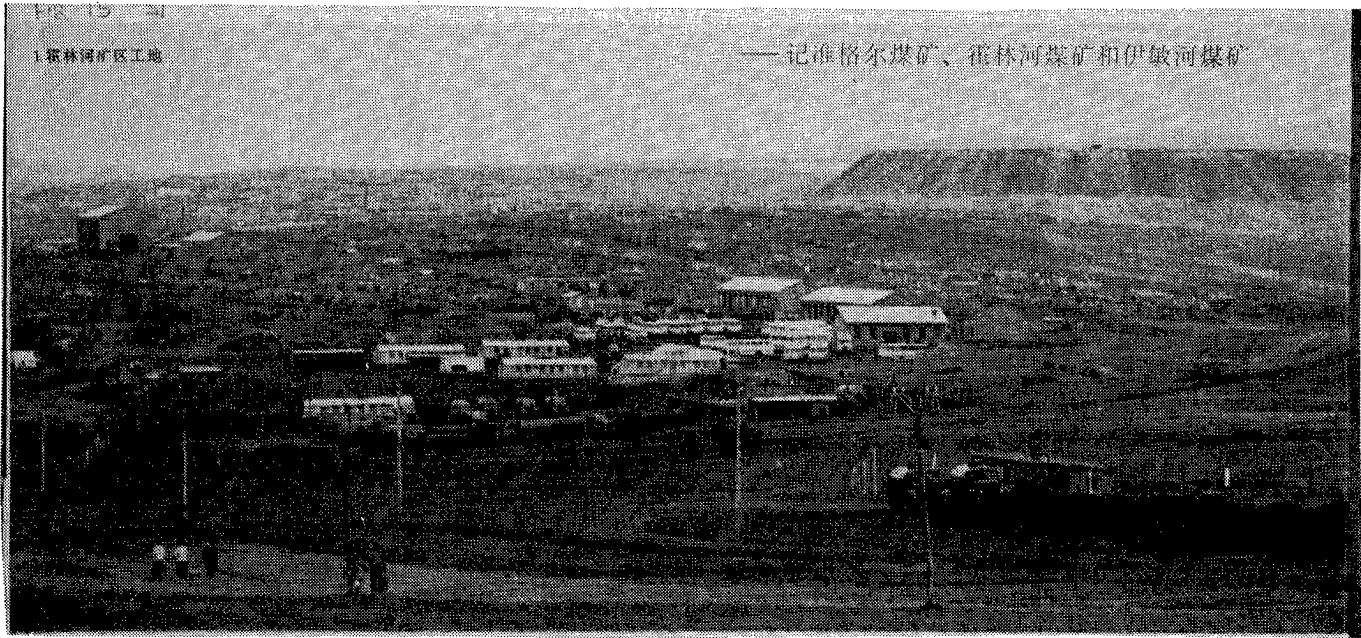


Fig. 15 Construction site at the Huolin He Mining Zone in Nei Monggol AR. Measuring 60 kilometers in length and 9 kilometers in width, this coalfield has a total reserve of 12.9 billion tons (brown coal). [Source: Hohhot NEIMENGGU in Chinese and Mongolian No 5, 1983 p 6]

伊敏河矿区的早晨

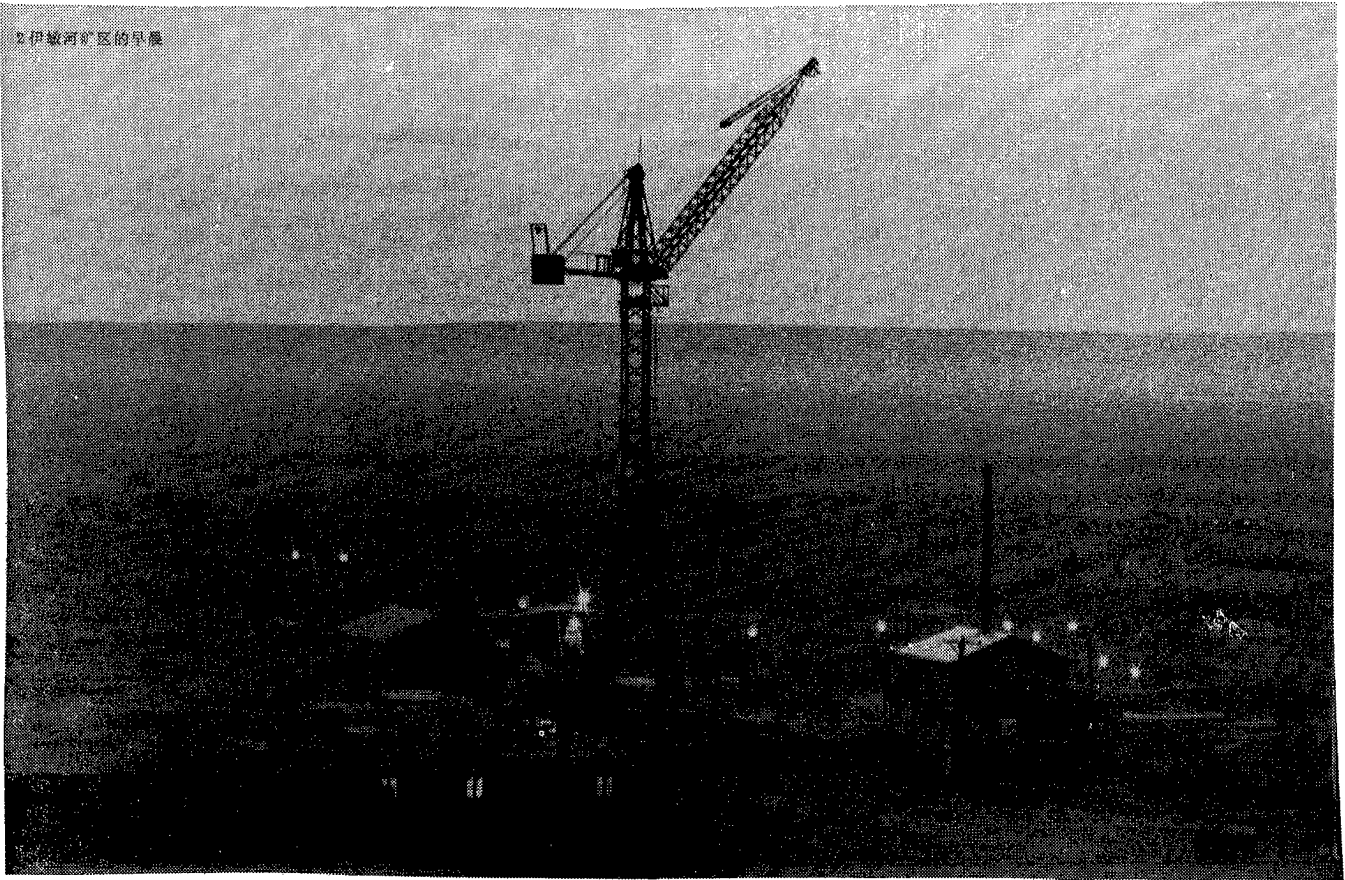


Fig. 16 A morning scene at the Yimin He Mining Zone in Nei Monggol AR. Covering an area of 520 square kilometers, this coalfield has a total reserve of 5 billion tons.

[Source: Hohhot NEIMENGGU in Chinese and Mongolian No 5, 1983 p 6]



Fig. 17 A section of the Heidaigou open-pit seams at the Junggar Coal Mine  
in Nei Monggol  
[Source: Hohhot NEIMENGGU in Chinese and Mongolian No 5, 1983 p 8]

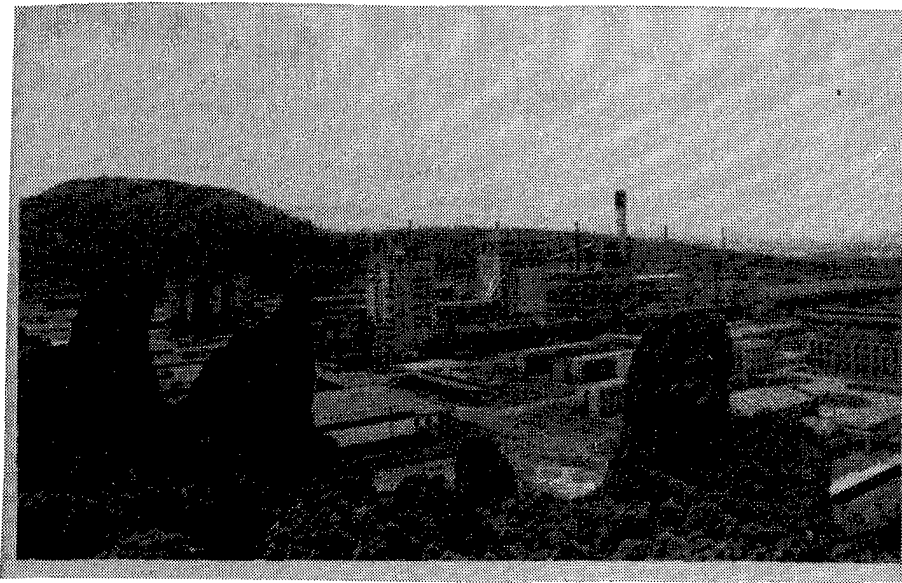


Fig. 18 Full view of the production area of the Kunming Sodium Tripolyphosphate Plant, the basic construction of which has entered the finishing stage. [Source: Kunming YUNNAN HUABAO [YUNNAN PICTORIAL] in Chinese No 5, 1983 p 5]

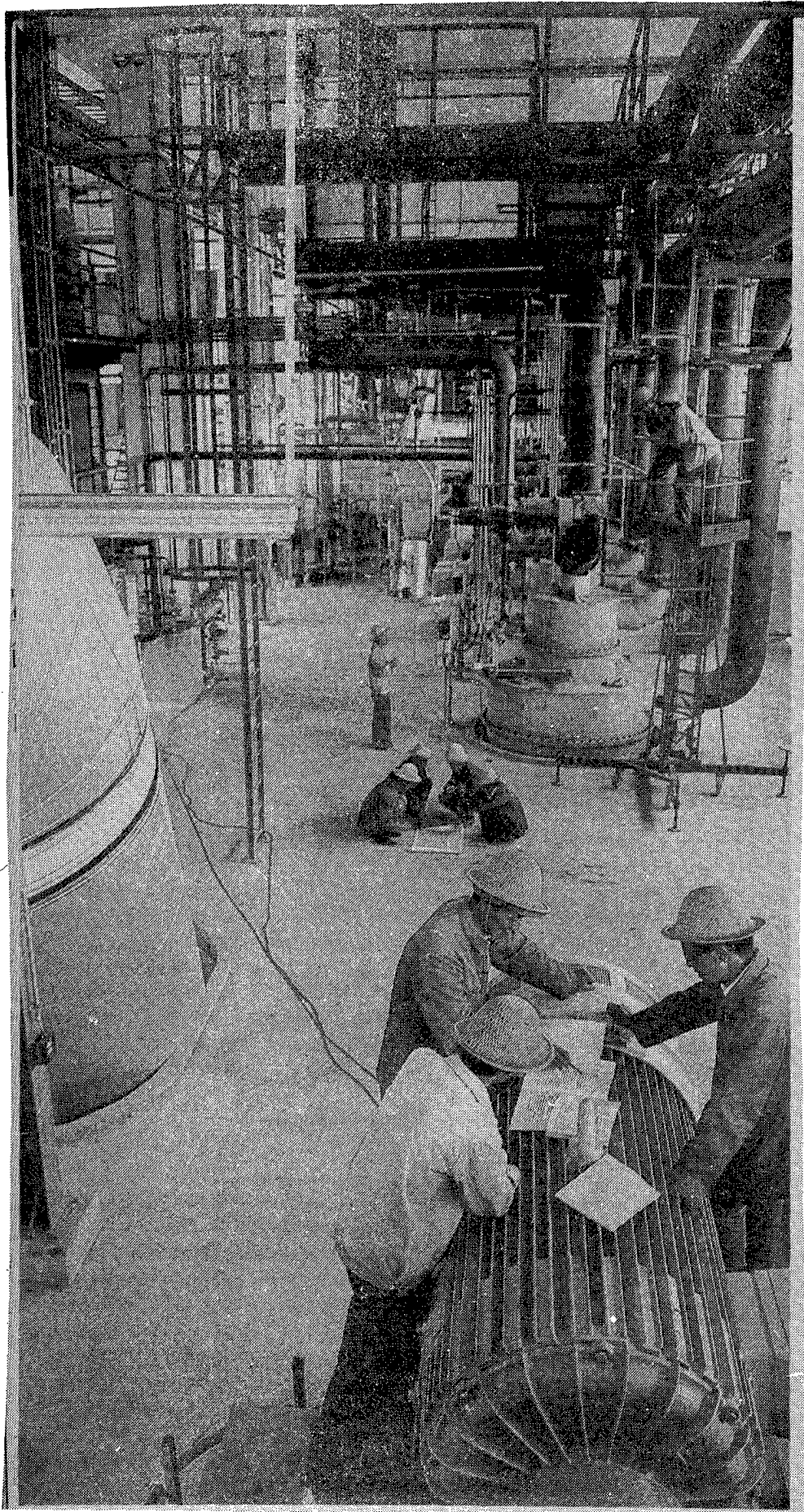


Fig. 19 View of the materials preparation workshop of the Kunming Sodium Tripolyphosphate Plant  
[Source: Kunming YUNNAN HUABAO [YUNNAN PICTORIAL] in Chinese No 5, 1983 p 4]

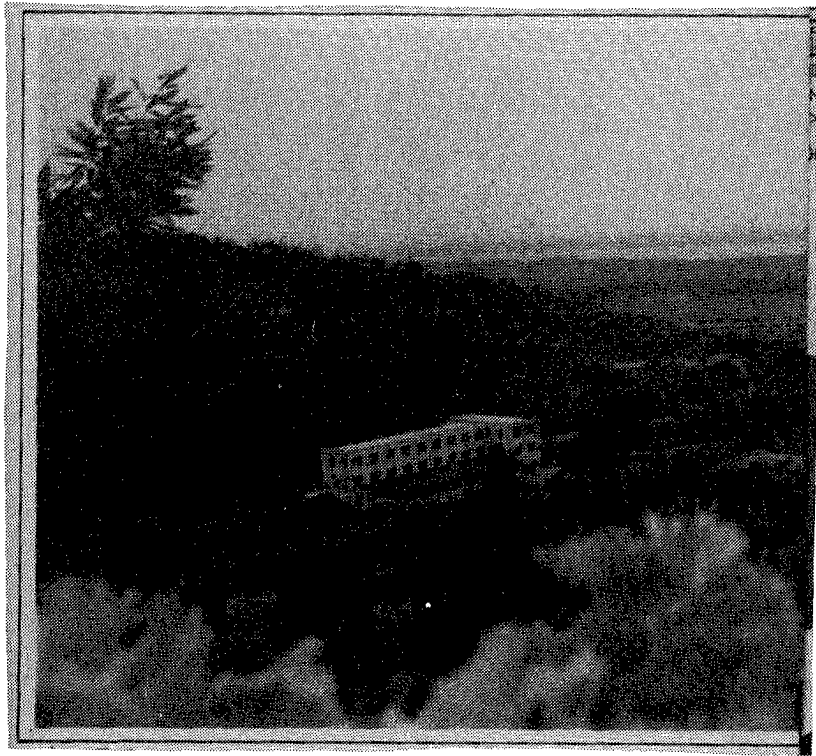
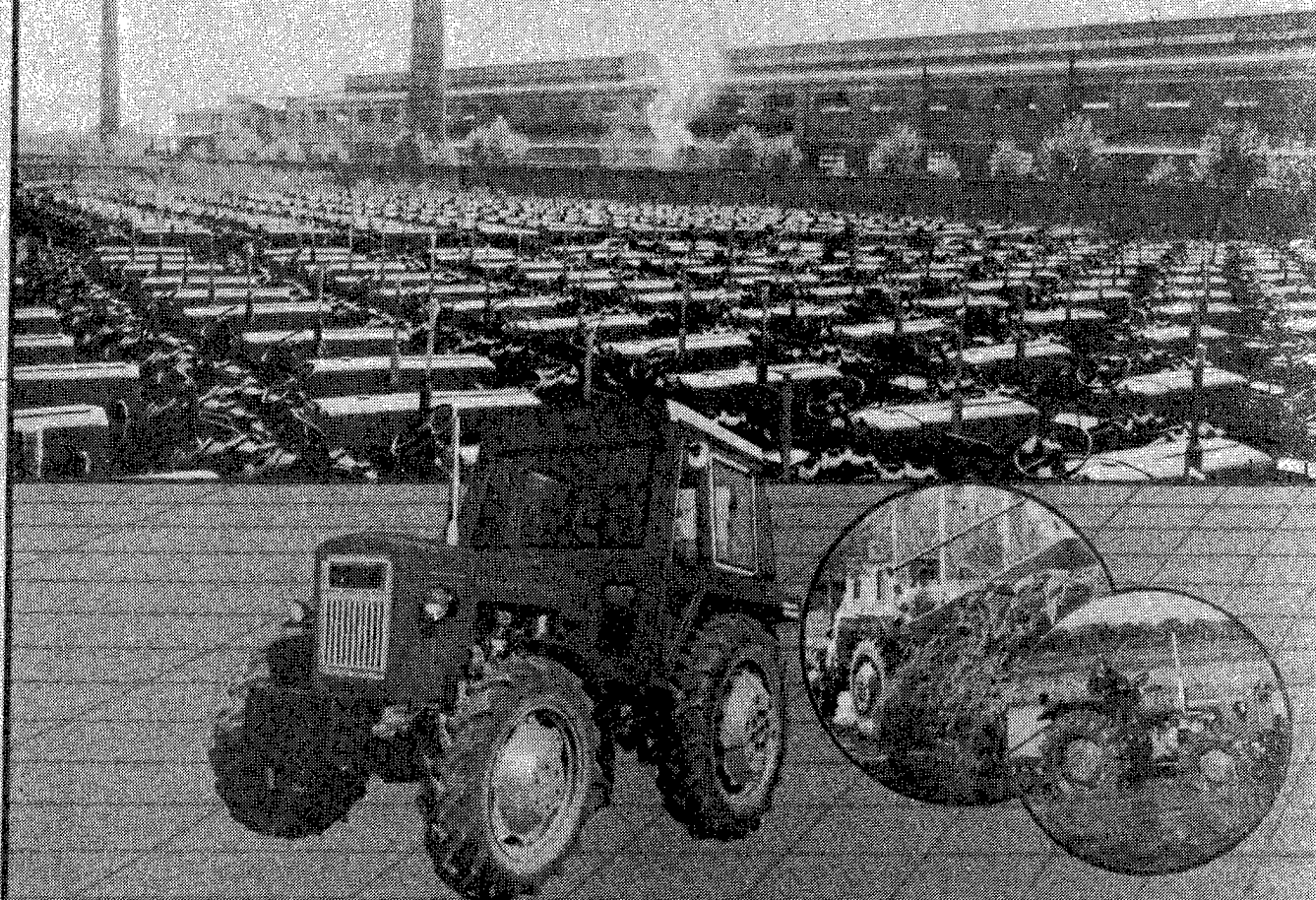


Fig. 20 Full view of the state-owned Hubei Automobile Lamps Plant. Equipped with 190 pieces of equipment and three continuous production lines, this plant is turning out 35 product varieties, including head lights, signal lights, and auxiliary lights.  
[Source: Wuchang HUBEI HUABAO [HUBEI PICTORIAL] in Chinese No 4, 1983 pp 16-17]

# 清江拖拉机厂

QINGJIANG TRACTOR FACTORY



There are three different kinds of Type Jiangsu-50 Series tractors:

- Basic type
- Four-wheel drive
- High seats from ground

They belong to standard forms in our country. One tractor was entitled as "Quality Product" by the Ministry of Machine Building Industry in 1982. Among them, the four-wheel drive type is distinguished for their good working property, high tractive force, shock-proof and high durability. Hence, they are most suitable for use in the paddy and muddy field. This is one of the advanced type in our country. In addition, we can also supply four-ton single axle self-unloading trailer and different kind of farming implements.

Fig. 21 View of the Qingjiang Tractor Plant in Qingjiang City, Jiangsu Province. Products include: Type Jiangsu-50 Series tractors, four-ton single axle self-unloading trailer and different kinds of farming implements. [Source: Hong Kong ZHONGGUO JIXIE [CHINA MACHINERY] in Chinese and English No 4, 1983 p 36]



Fig. 22 Photograph of the Lianyungang Transformer Plant in Jiangsu Province. Products include large, medium, and small electric transformers, transformers for carrier voltage regulators, electric furnaces, rectifiers, low tension strong electric current salt-bath furnaces and mines. The capacity of the transformers ranges from 10KVA to 31500KVA, and the class of voltage from 110KV down. [Source: Hong Kong ZHONGGUO JIXIE [CHINA MACHINERY] in Chinese and English No 4, 1983, back cover]

CSO: 4013/54

END