

249119

JPRS-CPI-84-005

26 July 1984

China Report

PLANT AND INSTALLATION DATA

19980306 085

DTIC QUALITY INSPECTED 4

DISTRIBUTION STATEMENT A

Approved for public release;
Distribution Unlimited

FBIS

FOREIGN BROADCAST INFORMATION SERVICE

REPRODUCED BY
NATIONAL TECHNICAL
INFORMATION SERVICE
U.S. DEPARTMENT OF COMMERCE
SPRINGFIELD, VA. 22161

6
23
103

NOTE

JPRS publications contain information primarily from foreign newspapers, periodicals and books, but also from news agency transmissions and broadcasts. Materials from foreign-language sources are translated; those from English-language sources are transcribed or reprinted, with the original phrasing and other characteristics retained.

Headlines, editorial reports, and material enclosed in brackets [] are supplied by JPRS. Processing indicators such as [Text] or [Excerpt] in the first line of each item, or following the last line of a brief, indicate how the original information was processed. Where no processing indicator is given, the information was summarized or extracted.

Unfamiliar names rendered phonetically or transliterated are enclosed in parentheses. Words or names preceded by a question mark and enclosed in parentheses were not clear in the original but have been supplied as appropriate in context. Other unattributed parenthetical notes within the body of an item originate with the source. Times within items are as given by source.

The contents of this publication in no way represent the policies, views or attitudes of the U.S. Government.

PROCUREMENT OF PUBLICATIONS

JPRS publications may be ordered from the National Technical Information Service, Springfield, Virginia 22161. In ordering, it is recommended that the JPRS number, title, date and author, if applicable, of publication be cited.

Current JPRS publications are announced in Government Reports Announcements issued semi-monthly by the National Technical Information Service, and are listed in the Monthly Catalog of U.S. Government Publications issued by the Superintendent of Documents, U.S. Government Printing Office, Washington, D.C. 20402.

Correspondence pertaining to matters other than procurement may be addressed to Joint Publications Research Service, 1000 North Glebe Road, Arlington, Virginia 22201.

26 July 1984

CHINA REPORT
PLANT AND INSTALLATION DATA

CONTENTS

I. Metallurgical Industry.....	1
II. Transportation Equipment Industry.....	3
III. Electronic and Precision Equipment Industries.....	4
IV. Chemical Industry.....	10
V. Fuel and Power Industries.....	11
VI. Machine-Building Industry.....	13
VII. Agricultural Machinery Industry.....	17
VIII. Miscellaneous Industries.....	18
IX. Photographs of Industrial Facilities.....	22

I. METALLURGICAL INDUSTRY

Item: Tianjin Nonferrous Metals Casting Plant
[1131 3160 2589 5331 6855 1466 6999 6644 0617]

Location: Tianjin, PRC

Data: In collaboration with the Shenyang Casting Research Institute and the Handan Automatic Instruments and Meters Plant, this plant has developed a diecasting technological parameters testing instrument that is sorely needed in the diecasting operations in the country. The instrument was examined at a meeting held in Tianjin by the Hebei Provincial Machinery Bureau during December 1983. Test results showed that all parameters are up to the design requirements. The Handan Automatic Instruments and Meters Plant is now mass producing the instrument.

Source: Shenyang ZHUZAO [FOUNDRY] in Chinese No 2, 1984 p 12

Item: Tongchuan City Aluminum Plant
[6894 1557 1579 6986 0617]

Location: Tongchuan City, Shaanxi, PRC

Data: Groundbreaking of this expansion project took place on 16 February. It is the largest joint project undertaken by Shaanxi Province and Shanghai City. Scheduled to be completed at the end of 1985, this project will turn out 9,500 tons of electrolytic aluminum annually.

Source: Xi'an SHAANXI RIBAO in Chinese 24 Feb 84 p 1

Item: Jinchuan Mining Zone No 2
[6855 1557 0059 4349 0575]

Location: Jinchang, Gansu, PRC

Data: A multimetallic ore base, Jinchuan has four mining zones, of which this zone ranks first, accounting for three-fourths of the known reserves in the whole area. The ore grade is high and deposits are deep-seated (generally 200 to 400 meters below the earth's surface). Capital construction work began here in 1966, but the special characteristics of the area, such as depth of deposits, fragmented rocks, and earth's pressure, have slowed the shaft and gallery construction work, thereby adversely affecting the early completion of these projects. With the help of research units concerned, the problem of support and propping has been initially solved. However, the shoring of some of the poor rock formations remains a difficult problem.

Source: Chongqing DIXIA GONGCHENG [UNDERGROUND ENGINEERING] in Chinese No 3, 1984 p 9

II. TRANSPORTATION EQUIPMENT INDUSTRY

Item: Hong'an Company
[4767 1344 0361 0674]

Location: Xi'an, Shaanxi, PRC

Data: This state-owned company has in recent years been devoting its efforts toward making civilian products, including "Yun-7" aircraft, communications antennas, products processed with materials from abroad, and shaped aluminum products. Its "Yun-7" aircraft is the first Chinese-built aircraft operating on domestic air routes. During 1984 and 1985, the company will deliver 15 aircraft to the Civil Aviation Administration. It is also producing 84 kinds of section aluminum materials which can be assembled into doors, windows, cabinets, shelves, book-cases, partition walls, and a host of other products. It has produced China's first aerial cable car. The company's output value of civilian products and commodity output value for the first quarter of 1984 registered increases of 38 and 165 percent respectively as compared to the like 1983 period.

Source: Xi'an SHAANXI RIBAO in Chinese 20 May 84 p 1

Item: Shaanxi Transporter Manufacturing Plant
[7103 6007 6663 6551 2623 0455 6644 0617]

Location: Shaanxi Province, PRC

Data: The Yun-8 Transport Plane, which made its maiden flight from Chengdu to Lhasa 20 May 1984, was built by this plant. The multi-purpose aircraft is equipped with four Chinese-built turbine propeller engines and has a maximum take-off weight of 61 tons. Its maximum carrying weight is 20 tons and maximum flying range is 5,600 kilometers.

Source: Xi'an SHAANXI RIBAO in Chinese 21 May 84 p 1

III. ELECTRONIC AND PRECISION EQUIPMENT INDUSTRIES

Item: Hongqi Instruments Plant
[4767 2475 0308 0892 0617]

Location: Changsha, Hunan, PRC

Data: In cooperation with the National Defense Science and Technology University, this plant has developed a CHT-2 resistance strain-type sensor multi-circuit signal regulator. It was recently evaluated and put into mass production. When fitted with a resistance strain-type sensing device, SY-2 strain-type sensor head, and display equipment, the regulator can become a complete information detecting, amplifying, and displaying system. It can also operate independently when fitted with a strain-type sensor.

Source: Beijing DIANZI SHIJIE [ELECTRONIC WORLD] in Chinese No 5, 1984 p 9

Item: Plant No 871
[0360 0003 0001 0617]

Location: Shaoxing, Zhejiang, PRC

Data: Peng Zhen, chairman of the NPC Standing Committee, recently visited this plant project which is still under construction. One of China's complexes developing the production of large-scale integrated circuits, this plant expects to catch up with the world's advanced level in microelectronic research and production by the year 2000. Its sterilized plant buildings have, in the main, been completed.

Source: Xi'an SHAANXI RIBAO in Chinese 16 Feb 84 p 4

Item: State-owned Plant No 262
[0948 3602 0059 0362 0059 0617]

Location: Probably Xi'an, Shaanxi, PRC

Data: This numbered plant is systematically transferring nuclear electronic technology to the civilian sector. To date, it has completed over 100 scientific research items, 26 of which have won prizes at the provincial and ministry levels. Fifty-nine new products have entered the market, nine of which have filled a void in the domestic market. Radiation protection and monitoring devices, r immunity counter, and automatic fire alarm are some of its new products. Technical transfer to the civilian sector has opened up a new phase in the production and business operation of this plant. Its output value of civilian goods in recent years accounted for 90 percent of its gross annual output value. In early April this year, it has signed civilian goods sale contracts amounting to 8.4 million yuan.

Source: Xi'an SHAANXI RIBAO in Chinese 19 May 84 p 2

Item: Tianjin Plant No 712
[1131 3160 0003 0001 0059 0617]

Location: Tianjin, PRC

Data: Eight of this plant's products have won prizes for top quality. Its 705 radio station has become China's first military tactical radio station with "reliable index." Its Beijing brand television set is one of the five brand names, averaging 5,000 hours without troubles. In 1978, the factory turned out 20,000 television sets and in 1982, 210,000 sets. It netted 1.66 million yuan in profit in 1979 and 20.64 million yuan in 1982.

Source: Beijing ZHONGGUO ZHILIANG GUANGLI [QUALITY CONTROL IN CHINA] in Chinese No 3, 1984 p 12

Item: Handan Automatic Instruments and Meters Plant
[6725 6779 5261 0520 0553 0308 0892 0617]

Location: Handan, Hebei, PRC

Data: In collaboration with the Shenyang Casting Institute and the Tianjin Nonferrous Metal Casting Plant, this plant has developed a TYZ-die-casting parameters testing instrument which is sorely needed in die-casting operations. The instrument was evaluated at a meeting held by the Hebei Machine-Building Bureau in December 1983 and was found to be up to the design requirements. This plant has been designated as batch producer of the instrument, which has a punch pressure of 0-250 kg force/cm² and 0-350 kg force/cm². Its precision is ± 2.5 percent.

Source: Shenyang ZHUZAO [FOUNDRY] in Chinese No 2, 1984 p 12

Item: Shanghai Telecommunication Equipment Plant No 6
[0006 3189 7193 0207 6080 0271 0362 0617]

Location: Shanghai, PRC

Data: GQZ industrial television optical fiber transmission system is a new product of this plant. The system is capable of transmitting a circuit of color (or black and white) television signal and a circuit of accompanying signal. The maximum transmission range is 3 kilometers. If the relay method is employed, its range can be extended considerably. The communications section of the Shanghai Public Security Bureau, the East China Electric Power Testing Institute, the Shanghai Tunnel Company, the Shijiazhuang City Television Station, and the Tianjin Television Station are now using the system.

Source: Shanghai DIANZI JISHU [ELECTRONIC TECHNOLOGY] in Chinese No 4, 1984, p 44

Item: Sichuan Province Post and Telecommunication Exchange Equipment Plant
[0934 1557 4164 6755 7193 0074 2255 6080 0271 0617]

Location: Chengdu, Sichuan, PRC

Data: Formerly known as Sichuan Province Plant No 701, this plant specializes in the manufacture of rural telephone lead-in equipment, including JPX01 lead-in derrick, JDY01 power equipment cabinet, JLG01 power distributor cabinet, and ZPX01 audio frequency line distributor.

Source: Beijing NONGCUN DIANXIN JISHU [TECHNOLOGY OF RURAL TELECOMMUNICATIONS] in Chinese No 4, 1984, inside back cover

Item: Wuhan Electronic Computer Plant
[2976 3352 7193 1311 6060 4615 2623 0617]

Location: Wuhan, Hubei, PRC

Data: This recently established plant "will lay a foundation for promoting electronic computer technology in Wuhan City." In March this year, the Wuhan City Government decided to organize and build this plant on the basis of the Computer Research Institute of the Wuhan City Radio Plant No 2. In just 2 months' time, this plant has built up a monthly output capacity of 500 microelectronic computers. Before the establishment of this plant, the former Computer Research Institute of the Wuhan Radio Plant No 2 had developed a batch of microelectronic computers. Since 1978, in cooperation with some units concerned, they developed drawing and mapping machines, military warehouse temperature and humidity remote checking and control systems, power supply real time monitoring system, software system for loom monitoring system and food grain procurement special-purpose electronic computers. When put into production, the plant will place emphasis on the development of popular microcomputers and intelligent electronic components to meet the needs of medium- and small-sized enterprises in their technical renovations, modernization of enterprise management, and computerization of household electrical appliances.

Source: Wuhan HUBEI RIBAO in Chinese 28 May 84 p 1

Item: Chengdu City Electronics Research Institute
[2052 6757 1579 7193 1311 4282 4496 2076]

Location: Chengdu, Sichuan, PRC

Data: This institute employs 120 people, over 60 percent of whom is research personnel. Thanks to the proper utilization of and positive role played by the research personnel, during the past 5 years since its inception, this institute has completed 38 successful experiments in trial production and made significant contributions to saving energy, carrying out technical reforms, and increasing economic benefits among enterprises.

Source: Chengdu SICHUAN RIBAO in Chinese 30 May 84 p 1

Item: Nanhu Radio Plant
[0589 3275 2477 4848 7193 0617]

Location: Yuhang, Zhejiang, PRC

Data: In cooperation with Zhejiang University and the Zhejiang Architectural Design Institute, this plant has successfully developed a type of MB coal integrating meter. Employing a photoelectric sensor, the meter converts the coal quantity signal into photoelectric pulse. After going through the coefficient multiplier, the pulse is put into the counter to be computed. The results of the computation show the actual numerical value of the coal consumption through the decoder. A printer can also be added to print out the data.

Source: Beijing DIANZI SHIJIE [ELECTRONIC WORLD] in Chinese No 5, 1984 p 9

Item: Huzhou City Radio Plant
[3275 1558 1579 2477 4848 7193 0617]

Location: Huzhou, Zhejiang, PRC

Data: The Beijing Institute of Photoelectric Technology has developed a JBD laser light wavelength scaling instrument that is up to world's advanced level. Its operational wavelength is 6000-7500 Å. It weighs 1.5 kg and its precision can reach 0.001 Å. This plant has been designated as the unit to produce the instrument on a limited basis.

Source: Beijing DIANZI SHIJIE [ELECTRONIC WORLD] in Chinese No 5, 1984 p 9

Item: Xi'an Petrochemical Plant
[6007 1344 4258 0553 0617]

Location: Xi'an, Shaanxi, PRC

Data: In collaboration with the Hong'an Machine Building Corporation under the Ministry of Aviation Industry, this plant has developed a new-type organic tempering agent, thus filling a void in alloy tempering media needed by China's aviation industry. High molecular organic tempering agents, which hitherto had to be imported, is sorely needed by the country for the development of its aviation industry.

Source: Xi'an SHAANXI RIBAO in Chinese 29 May 84 p 1

Item: Yangzi Ethylene Plant
[(2254 1311) 0044 7910 0617]

Location: Nanjing, Jiangsu, PRC

Data: Construction began today on this plant, one of the largest in China. Located near Nanjing, the plant will produce 630,000 tons of polyester and 1 million tons of other chemicals with an annual output value of 3.2 billion yuan (about 1.6 billion U.S. dollars) for petrochemical enterprises, including the nearby Yizheng Chemical Fiber Industrial Company and the Shanghai Jinshan Petrochemical Plant. Key equipment and technologies will be imported from Japan and the Federal Republic of Germany.

The plant is part of the program of the China Petrochemical Corporation to develop the country's petrochemical industry by equipping it with up-to-date technologies.

Source: Beijing XINHUA in English 1913 GMT 1 Jun 84

Item: Shangyuanmen Petroleum Processing Plant
[0006 0337 7024 4258 1444 0502 1562 0617]

Location: Nanjing, Jiangsu, PRC

Data: The Nanjing City Government has decided to close down this plant whose operations have polluted the piped water despite that it has gained some economic results. Production at the plant came to a full stop on 28 April 1984. Arrangements are being made to reassign the employees and workers. The plant has been turning over to the state 300,000 yuan in profits annually. However, the waste discharge outlet of the plant is located only 80 meters from where the river water is drawn. Despite all the efforts made to control the polluted water, the surface water still could not meet the standards, thus adversely affecting the quality of water entering the water plant. In order to minimize the economic losses suffered by the workers, the department concerned has allocated 135,000 yuan to be used as basic annual wages for all the employees and workers at the plant.

Source: Nanjing XINHUA RIBAO in Chinese 20 May 84 p 1

Item: Yanshitai Colliery
[4291 4258 0669 3561 4349]

Location: Nantong Mining Zone, Chongqing Municipality, Sichuan, PRC

Data: The accident of rock burst had occurred over 50 times here in the past 3 1/2 years. Statistics show that about 3,360 tons of coal have been "burst out," averaging 74 tons per burst. Analysis of the coal seam samples indicates that there is a tendency to occur rock burst at coal seam K₁ and there is no tendency at coal seam K₃ a₂ of the colliery. Analysis of the tectonic stress indicates that there is higher tectonic stress at the northern wing of the field. It is the important cause of formation for rock burst of the northern wing of the field.

Source: Chongqing CHONGQING DAXUE XUEBAO [JOURNAL OF CHONGQING UNIVERSITY]
in Chinese No 1, 1984 p 1-13 [as printed]

Item: Yindong Coal Mine
[6892 3159 3561 4349]

Location: Northern part of Pengyang County, Ningxia AR, PRC

Data: In the morning of 10 May 1984, a heavy rainstorm, the worst in many years, flooded the underground pathways of this mine and seriously damaged the stored coal and explosives and workers' living quarters. Local officials immediately adopted concrete measures to minimize the damages and losses. The engine rooms, dormitories, and underground pathways were cleared of mud and highways were repaired and restored to normal traffic in only 3 days.

Source: Yinchuan NINGXIA RIBAO in Chinese 30 May 84 p 4

Item: Chenghe Mining Administrative Bureau
[3397 0678 4349 0523 1444]

Location: Shaanxi, PRC

Data: This bureau's No 2 Mine has overfulfilled its semi-annual raw coal output plan by 766 tons, an increase of 44.65 percent over the same 1983 period. Its work face project quality was up to standards, consumption of materials showed a decline, and safety in production was satisfactory.

Source: Xi'an SHAANXI RIBAO in Chinese 31 May 84 p 2

VI. MACHINE-BUILDING INDUSTRY

Item: Shanghai Machine Tool Plant No 4
[0006 3189 4574 0934 2623 1643 0617]

Location: Shanghai, PRC

Data: This plant is one of key factories in the country specialized in making various milling machines. Its products include knee-type millers, planer millers, copying millers and all types of specialized millers for different uses. Since 1973, it has been mass producing 3-axis numerical control milling machines Model XSK 5040 and machining center Model XHK 6050. In 1979, it developed and completed the 500mm CNC bed-type milling machine series. Recently the plant developed a 4-axis simultaneously moving CNC milling machine Model XK715F-4.

Source: Beijing JICHUANG [MACHINE TOOLS] in Chinese No 3, 1984 p 47

Item: Shanghai Gearshift Machinery Plant No 1
[0006 3189 6239 6643 2623 2750 0001 0617]

Location: Shanghai, PRC

Data: This plant has been designated as a plant specialized in the manufacture of cycloidal pin-wheel speed reducer. Its Globe brand pin-wheel speed reducer employs the new-type cycloidal pin gearing and planetary transmission machinery which is used extensively in the drive and speed reduction mechanisms of the textile, printing and dyeing, light, food, metallurgical, mining, petroleum, chemicals, hoisting and transport, and construction machinery industries.

Source: Shanghai JIXIE ZHIZAO [MACHINERY] in Chinese No 4, 1984 p 27

Item: Qinchuan Machine Tool Plant
[4440 1557 2623 1643 0617]

Location: Baoji, Shaanxi, PRC

Data: Specialized in making gear grinders, hydraulic components and other precision machinery products, this factory was originally a segment of the Shanghai Machine Tool Plant, which moved to the present location and started operation in 1965. It employs 2,500 people, including 240 engineers, and covers an area of 260,000 square meters, of which 140,000 square meters are floor space installed with 796 units of major production equipment. A research laboratory affiliated with the plant is responsible for new product development and technical development planning. Model Y7125 and Y7132A gear grinders are some of its prize-winning products. Also recognized as an advanced factory in China's hydraulic component industry, this plant turns out 210 different specifications of hydraulic components, including vane pumps, electro-magnetic reversing valves of capacity up to 63 liters and speed regulating valves of capacity up to 100 liters. This enterprise also produces plastic molding machines, such as injection molding machine, polystyrol sponge molding machine, and middle hole molding machine.

Source: Beijing JICHUANG [MACHINE TOOL] in Chinese No 4, 1984 pp 46-47

Item: Xi'an Metallurgical Machinery Plant
[6007 1344 0396 6855 2623 2750 0617]

Location: Xi'an, Shaanxi, PRC

Data: In cooperation with Shanghai Steel Mill No 5, this plant has developed China's first 1,000-ton scrap steel hydraulic shear. One year of trial operations showed that its primary technical parameters are up to the designed indexes. It has an annual processing capacity of 250,000 tons, more than 30 times greater than the manual flame cutting method in efficiency.

Source: Xi'an SHAANXI RIBAO in Chinese 20 Feb 84 p 1

Item: Xi'an Heavy Machinery Research Institute
[6007 1344 6850 0992 2623 2750 4282 4496 2076]

Location: Xi'an, Shaanxi, PRC

Data: This institute has developed an "LL-50 continuous tube cold rolling machine which can raise productivity 10 to several dozen times and makes it easy to achieve automation of the entire rolling line. It has passed a technical evaluation test in March.

Source: Xi'an SHAANXI RIBAO in Chinese 28 May 84 p 1

Item: State-owned Plant No 524
[0948 3602 0063 0059 0934 0617]

Location: Probably Xi'an, Shaanxi, PRC

Data: The Ministry of Labor and Personnel has issued the design and manufacturing permit to this plant to mass produce the "three-type" pressure vessel suitable for use in the petroleum, chemicals, energy, and light industries.

Source: Xi'an SHAANXI RIBAO in Chinese 26 Mar 84 p 1

Item: Xiangfan City Capacity Plant No 12
[5980 2868 1579 0577 0059 7193 1363 0892 0617]

Location: Xiangfan, Hubei, PRC

Data: An automatic line with an annual output of 30 million aluminum electrolytic capacitors was put into operation here on 15 May. This project was carried out with loan granted by the International Trust Investment Company in Hubei. Forty-nine pieces of special equipment were imported from Japan through a Hong Kong firm. The automatic production line turns out more than 20 varieties of super small-sized "Globe" brand capacitors.

Source: Wuhan HUBEI RIBAO in Chinese 22 May 84 p 1

VII. AGRICULTURAL MACHINERY INDUSTRY

Item: Shangnan Xian Agricultural Machinery Repair and Parts Plant
[0794 0589 4905 6593 2623 0208 6792 0617]

Location: Shangnan County, Shaanxi, PRC

Data: This plant has turned out a tubular thresher that weighs 56 kilograms and can thresh 250 kilograms of wheat per hour. It was rated very high at a provincial wheat thresher evaluation meeting organized by the Shaanxi Agricultural and Animal Husbandry Department's Machinery Bureau in early May.

Source: Xi'an SHAANXI RIBAO in Chinese 28 May 84 p 1

Item: Haiyun Motor Vehicle Plant
[(3189 0061) 3086 6508 0617]

Location: Hainan Island, Guangdong, PRC

Data: On 31 May, the Hainan District Bureau of Machine Building Industry signed an agreement with the Yunnan Office of National Defense Science and Technology Industry to jointly produce light trucks for farm purposes. According to the agreement, both parties will jointly form the board of directors and establish this plant. The factory will manufacture Haiyun 130 model trucks for agricultural use, which will have a loading capacity of 1.75 tons and 2 rows of seats. The factory will manufacture 200 trucks in 1984, 1,500 to 2,000 in 1985, and strive as quickly as possible to reach an annual production capacity of 5,000 trucks.

Source: Haikou Hainan Island Service in Mandarin 0330 GMT 6 Jun 84 HK

Item: Huaxin Cement Plant
[5478 2450 3055 3136 0617]

Location: Huangshi City, Hubei, PRC

Data: From 1978 to 1982, this plant produced 46,626,000 tons of top-grade cement, an increase of 39 percent over the 1973-1977 period. Its gross industrial output value for the past 5 years has reached 311.102 million yuan, a 34.56-percent increase over the preceding 5 years. Its profits of 92,753,400 yuan for the past 5 years is 8.96 million yuan above the aggregate total of its fixed assets of 83.79 million yuan (total amount invested by the state). This enterprise employing 3,000 people can now earn for the state 20 million yuan in profits annually.

Source: Beijing ZHONGGUO ZHILIANG GUANLI [QUALITY CONTROL IN CHINA] in Chinese No 3, 1984 p 13

Item: Qianyang Xian Cement Plant
[0578 7122 4905 3055 3136 0617]

Location: Qianyang County, Shaanxi, PRC

Data: In 1983, this plant, employing only 180 employees and workers, invested 100,000 yuan to modify and update its equipment and scored marked economic results the same year. Last year, it turned over to the state 210,000 yuan in taxes and profits, showing an increase of 2.1 times over the preceding year.

Source: Xi'an SHAANXI RIBAO in Chinese 11 Feb 84 p 2

Item: Mei Xian Glass Plant
[4168 4905 3788 3863 0617]

Location: Mei County, Shaanxi, PRC

Data: The moving and expansion project of this plant has been completed and production of plate glass began on 16 February. This project with an annual plate glass output of 375,000 standard crates was finished way ahead of schedule, effecting a savings of about 3 million yuan.

Source: Xi'an SHAANXI RIBAO in Chinese 21 Feb 84 p 1

Item: Shaanxi Woolen Textile Mill No 2
[7104 6007 4574 0059 3029 4791 0617]

Location: Shaanxi, PRC

Data: Construction of this mill, one of Shaanxi's key projects, has begun. Covering a building area of 66,000 square meters, it is the first enterprise specialized in the production of woolen raw materials in Shaanxi. When completed in 1985, this mill will produce 1.2 million meters of woolen cloth and woolen rugs annually.

Source: Xi'an SHAANXI RIBAO in Chinese 24 Feb 84 p 1

Item: Hunan Artificial Board Plant
[3275 0589 0086 6644 2647 0617]

Location: Changsha, Hunan, PRC

Data: Construction on this plant, one of China's largest, began 30 May here. Upon completion in 1986, the plant with 110,000 square meters of floor space will have three major workshops and a whole range of auxiliary facilities including water supply and industrial sewage treatment. Annual production will be 50,000 cubic meters of plywood and 50,000 cubic meters of shaving board. The project is designed to help alleviate the shortage in timber supply through multi-purpose utilization of timber resources. The central China province of Hunan abounds in horse-tail pines which provide timber for making railway sleepers and pit props and the utilization rate has been low. It is expected the project will help raise the timber utilization rate up to 90 percent from the present 40 percent. The equipment and technology will be imported.

Source: Beijing XINHUA in English 1649 GMT 31 May 84 OW

Following are some of the plants and units listed as model collectives of Shanghai City for 1983:

National Defense Industry System

Electromachinery Bureau No 2

Shanghai Instrument and Meter Plant
Shanghai Broadcasting Equipment and Materials Plant
Xinhua Radio Plant in Shanghai
Shanghai Plant No 7013
Xinguang Telecommunication Equipment Plant in Shanghai
Xinzhonghua Machinery and Equipment Plant in Shanghai

Shipping Corporation

Hudong Shipyard
Zhonghua Shipyard
Shanghai Ship Repair and Building Plant
The No 9 Design Institute of the China Ship Building General Corporation
PLA Plant No 4805
Jiangnan Shipyard
Shanghai Navigational Instrument Plant
Xinzhong Motive Power Machinery Plant
Shanghai Navigational Instruments Plant
Qiuxin Shipyard
Donghai Ship Repair and Building Plant

Aviation Office

State-owned Plant No 3035
State-owned Plant No 5703
State-owned Plant No 573

Rear Base Administrative Bureau

Xin'an Electrical Engineering Plant
Shanghai Electronic Equipment and Materials Plant No 3

Source: Shanghai JIEFANG RIBAO in Chinese 26 Apr 84 p 4



Fig. 1 A view of the giant imported chemical fertilizer plant project under construction in Xinjiang. Single unit trial operation is scheduled to begin during the second half of 1984.

[Source: Chengdu SICHUAN RIBAO in Chinese 1 Nov 83 p 2]



Fig. 2 Photo of Film Plant No 1 under the Ministry of Chemical Industry. Built in the 1950's, this plant has become the largest photosensitive materials enterprise in the country. It accounts for 60 percent of the film output in China. To meet the special needs in defense and scientific research, this plant has developed remote sensing and aerial photography films, including color and black and white films. The plant is located in the western suburbs of Baoding City, Hebei.

[Source: Shijiazhuang HEBEI RIBAO in Chinese 28 May 84 p 4]

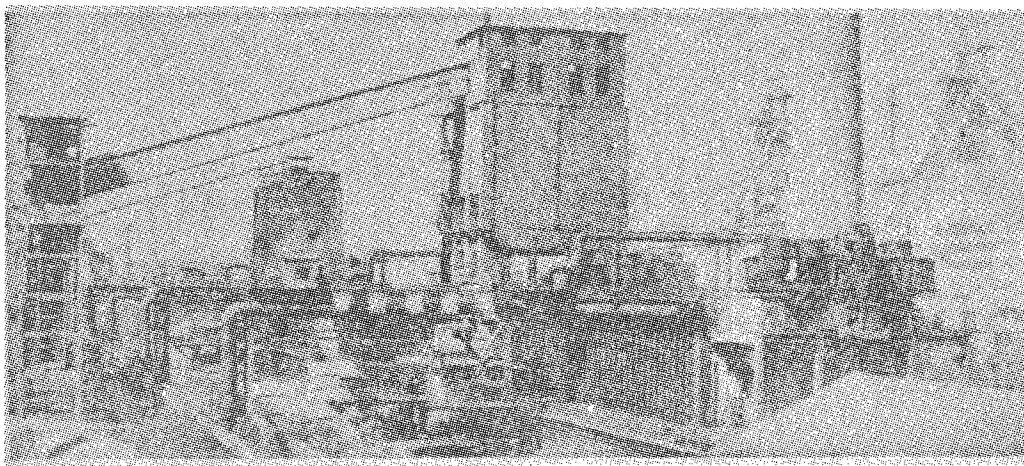


Fig. 3 A sectional view of the coking plant of the Panzhihua Iron and Steel Company. It has been named a "red banner unit" by the Ministry of Metallurgical Industry for its outstanding production and economic performances.

[Source: Chengdu SICHUAN RIBAO in Chinese 16 Apr 84 p 1]

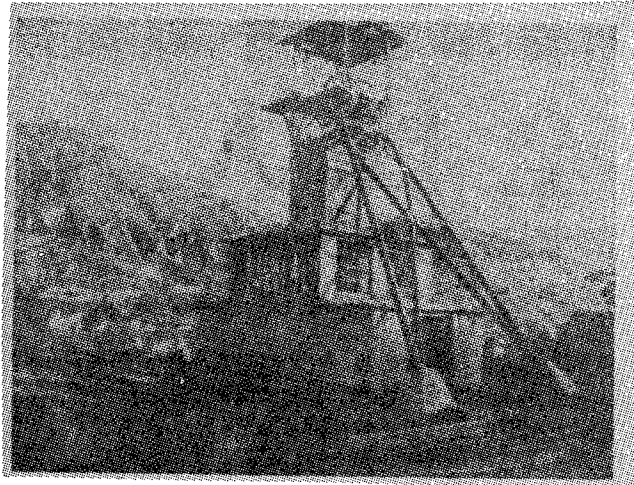


Fig. 4 Photograph of the No 5 Shaft of the Baizigou Coal Mine in Bin Xian, Shaanxi, which has carried out an automation project to double its lifting capacity.

[Source: Xi'an SHAANXI RIBAO in Chinese 1 Jun 84 p 1]

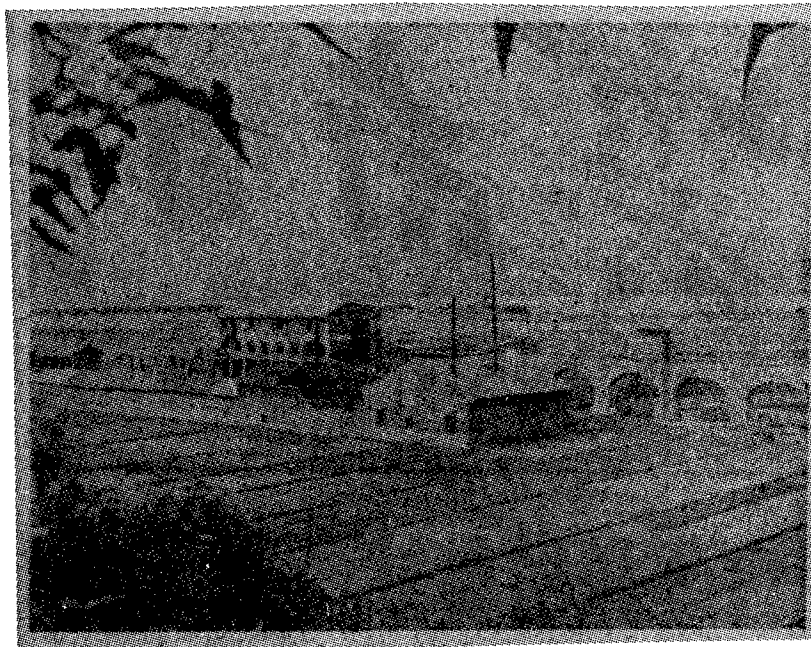


Fig. 5 The bone glue plant operated by the Yangguang Brigade in Tonghai County, Yunnan, renovated its equipment through self-reliant efforts to double its output of bone meal and other products. Its 1983 export quota was fulfilled ahead of schedule despite a shortage of electric power during a dry spell.

[Source: Kunming YUNNAN RIBAO in Chinese 25 Nov 83 p 2]

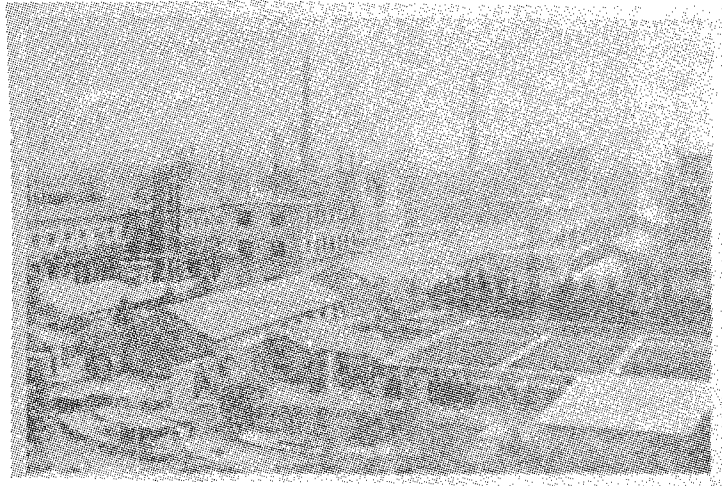


Fig. 6 A sectional view of the Taicang Chemical Fertilizer Plant in Jiangsu. The plant has won a prize for its outstanding management program in 1983.

[Source: Beijing GONGREN RIBAO in Chinese 12 Mar 84 p 3]



Fig. 7 Xi'an Radio Plant No 1 has built an assembly plant covering an area of 6,300 square meters and installed a black and white television set semi-automatic assembly line with an annual single shift output of 1-0,000 black and white television sets.

[Source: Xi'an SHAANXI RIBAO in Chinese 11 Feb 84 p 2]

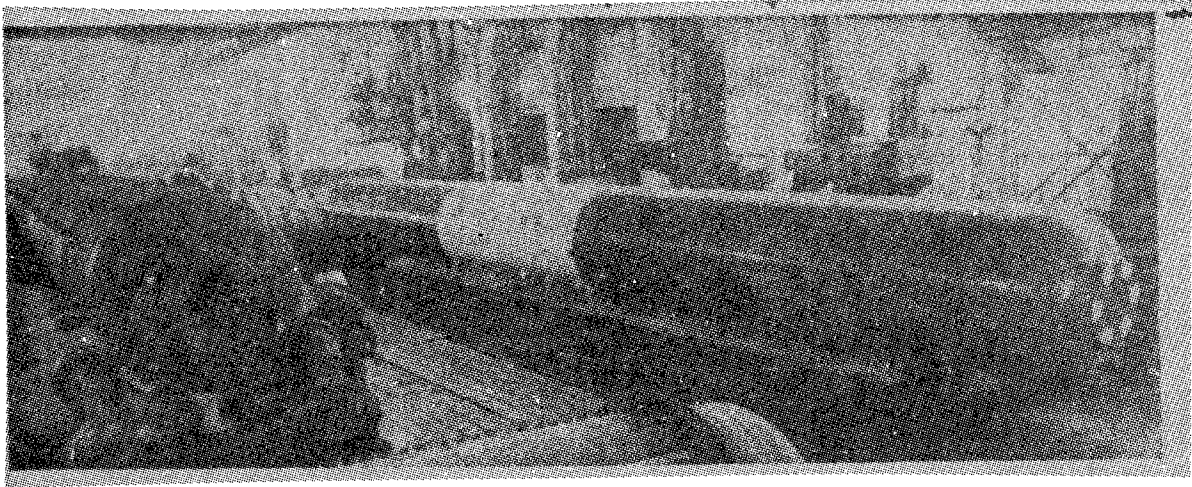


Fig. 8 Photo shows a batch of steam collectors built by the Dongfang Boiler Plant under the Ministry of Machine-Building Industry awaiting shipment. This plant accounts for one-fourth of the nation's power station boiler output. In the past 10 years, it has supplied 89 boilers to power stations in the country.

[Source: Chengdu SICHUAN RIBAO in Chinese 30 Apr 84 p 1]

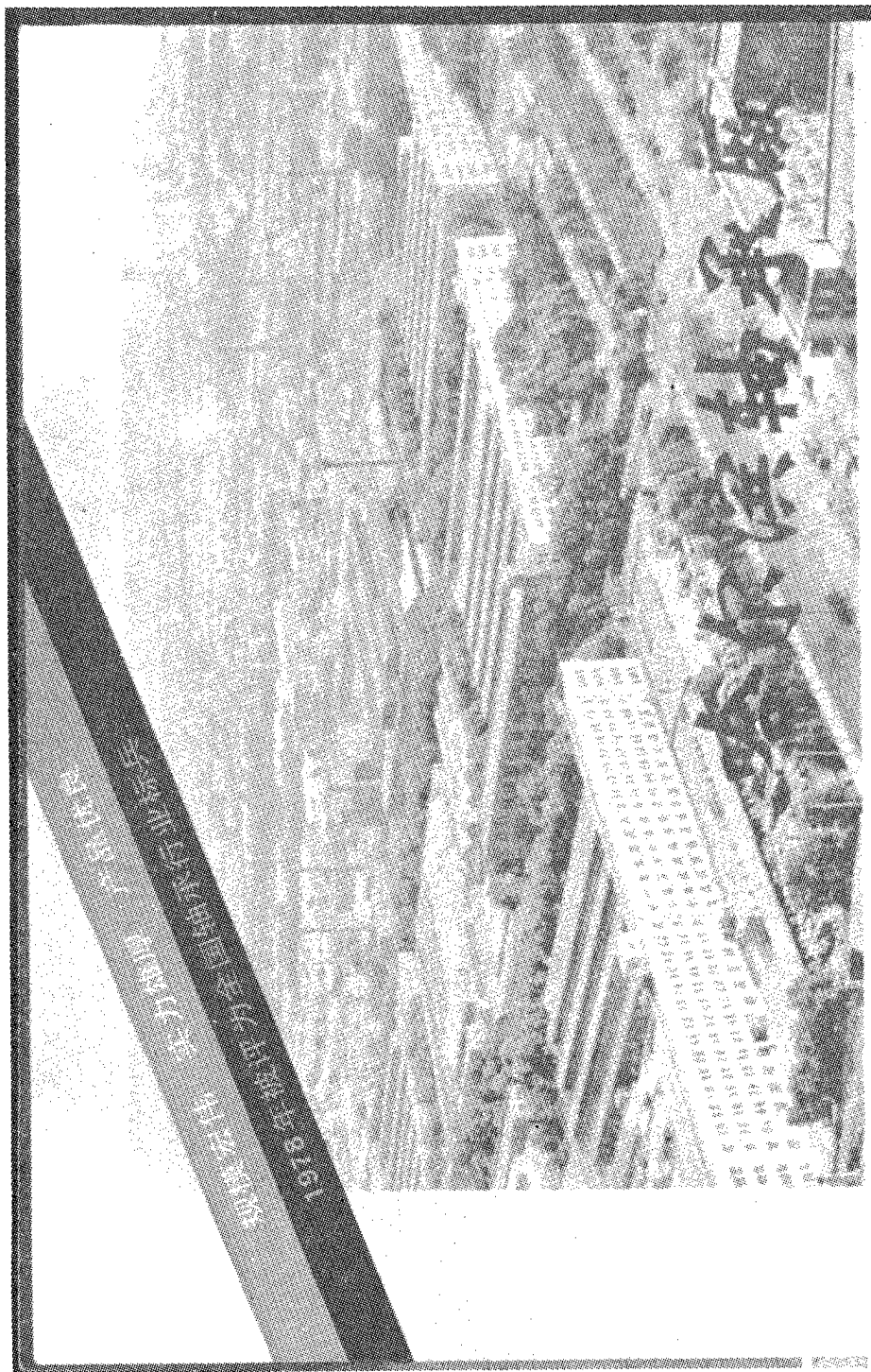


Fig. 9 Photograph of the Harbin Bearings Plant on the bank of the Songhua Jiang in Heilongjiang. The plant manufactures all kinds of bearings measuring 1 millimeter inside diameter to 250 millimeters outside diameter.

[Source: Beijing ZHILLANG GUANLI [QUALITY CONTROL] in Chinese No 4, 1984 inside frontcover]

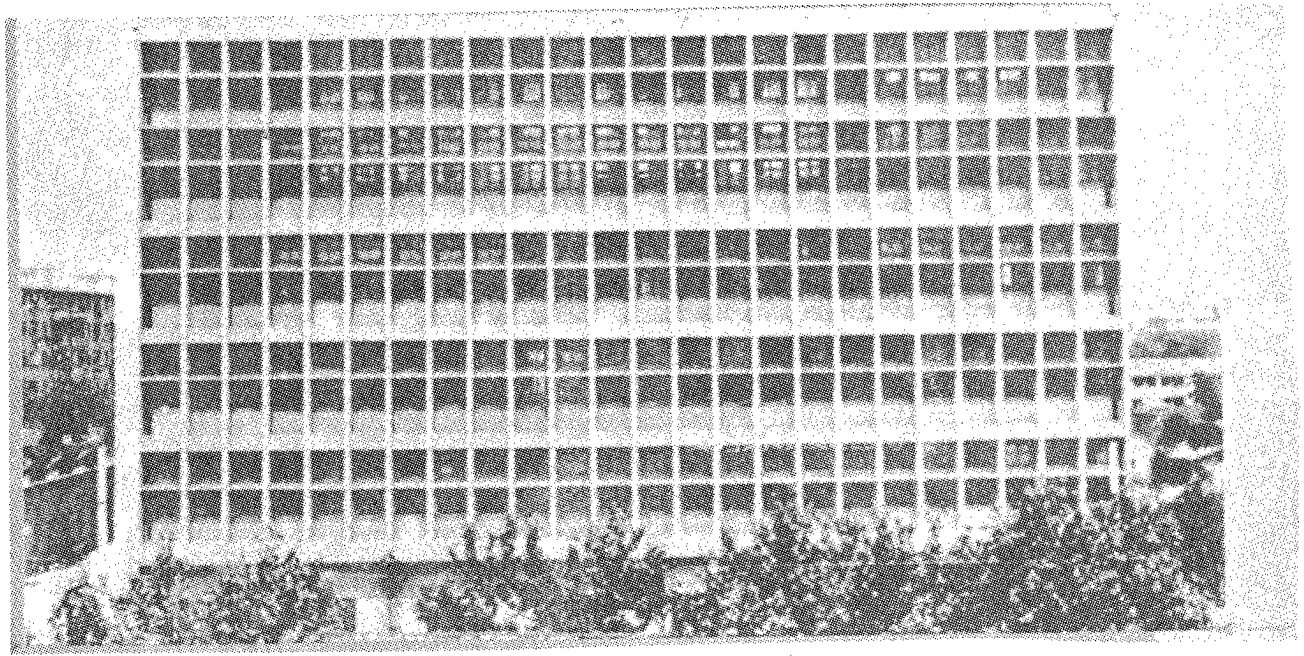


Fig. 10 A view of the Shanghai Motion Picture Machinery Plant which has in the past 30 years supplied the motion picture studios with more than 100 different types of cameras, recording machines, and other precision equipment. It is one of the major factories in the country making copying machines.

[Source: Beijing ZHILIANG GUANLI [QUALITY CONTROL] in Chinese No 3, 1984, inside frontcover]

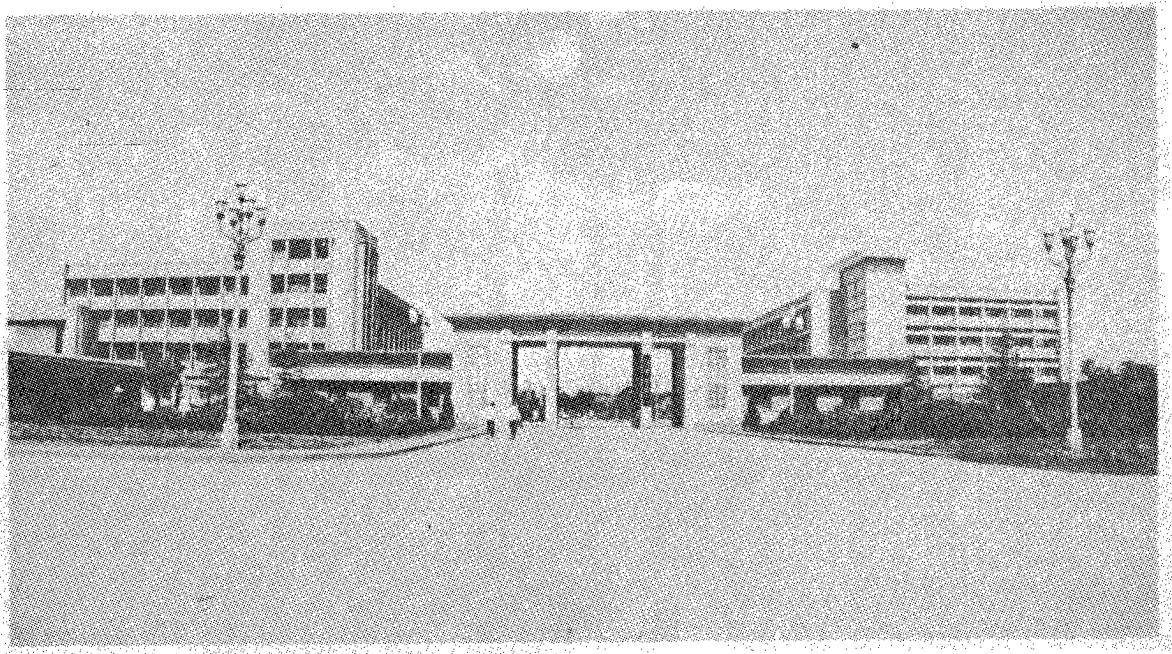


Fig. 11 Gate of the Xiangtan Cable Plant in Hunan Province. The plant produces wires and cables of more than 300 types of 12 categories.

[Source: Hong Kong ZHONGGUO JIXIE [CHINA MACHINERY] in Chinese & English No 3, 1984 p 12]

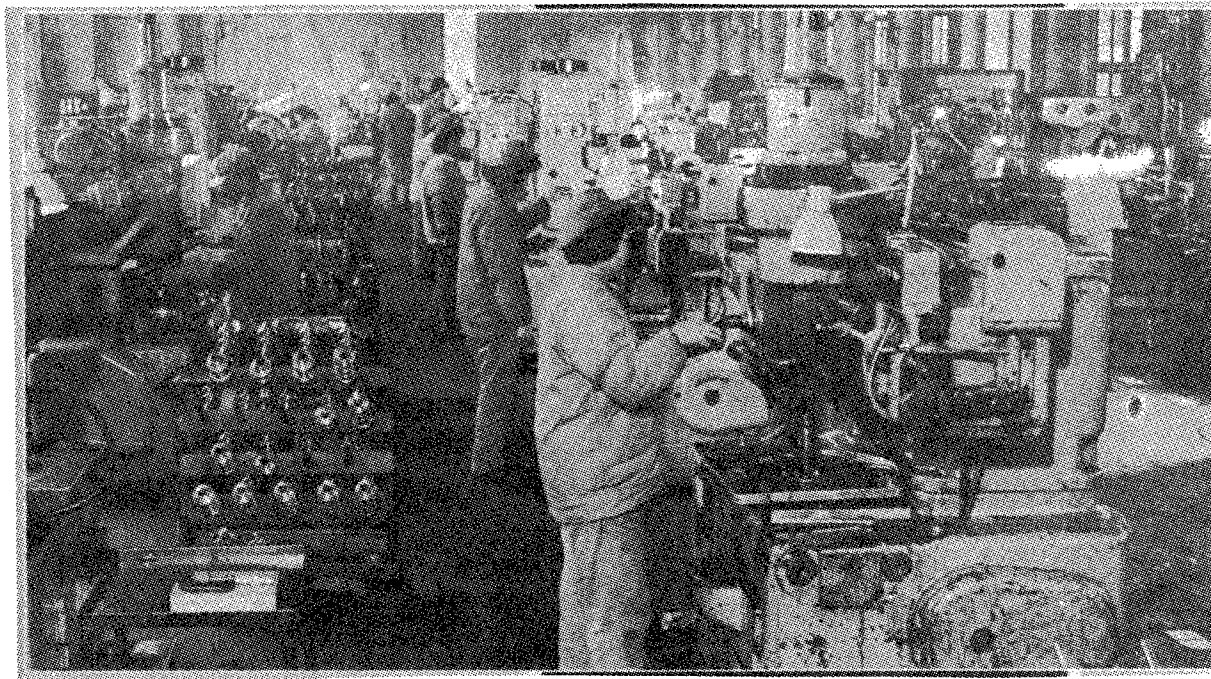


Fig. 12 Inside view of the Zhujiang City Machine Tool Plant in Hunan

[Source: Hong Kong ZHONGGUO JIXIE [CHINA MACHINERY] in Chinese & English No 3, 1984 p 62]

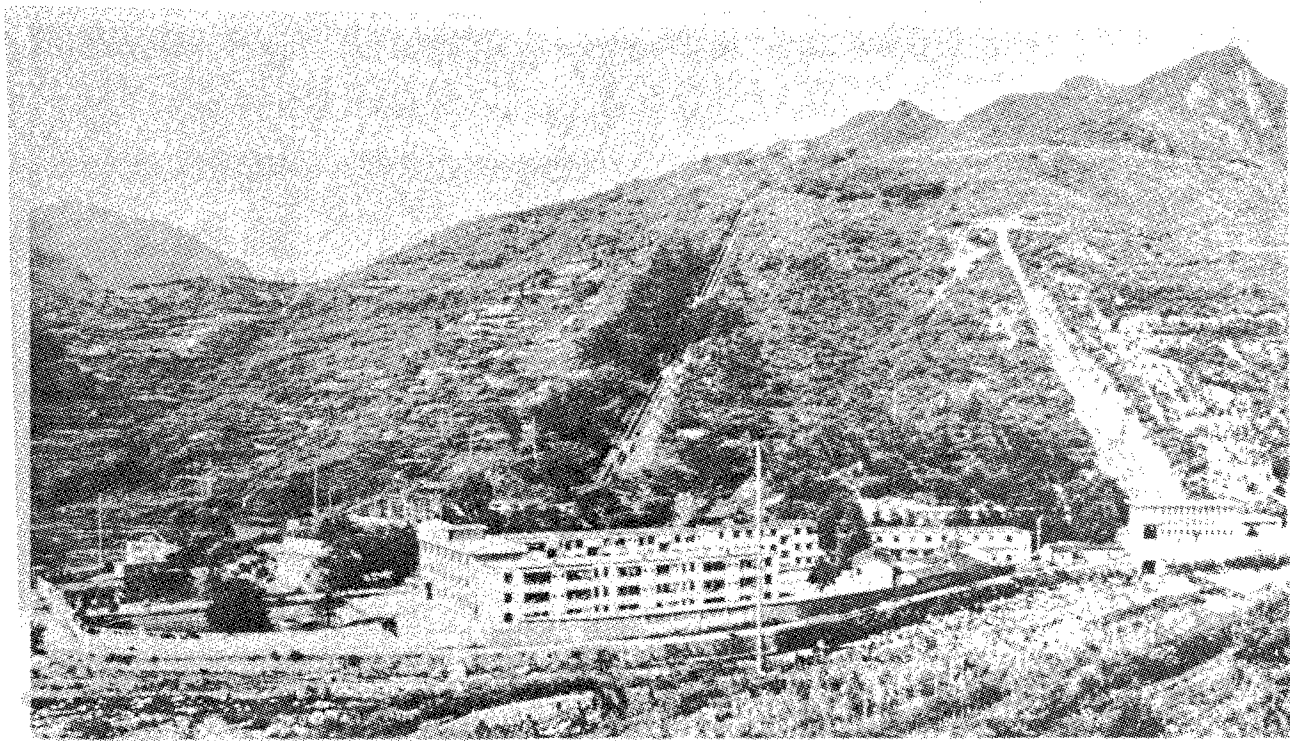


Fig. 13 The Guanpi Hydroelectric Power Station in Yangshan County, Guangdong Province.

[Source: Guangzhou GUANGDONG HUABAO [GUANGDONG PICTORIAL] in Chinese No 3, 1984 p 27]

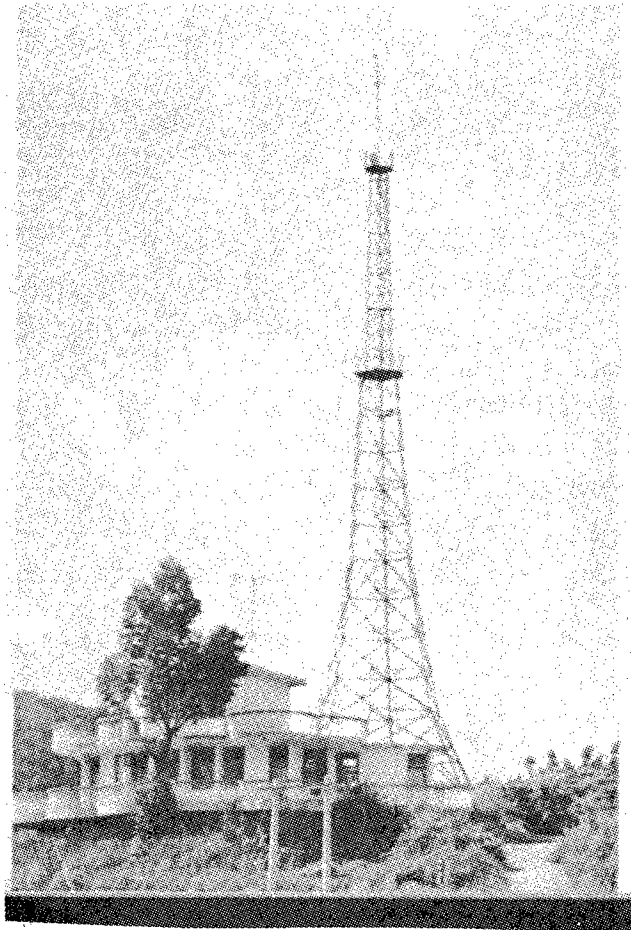


Fig. 14 A newly built television relay station in Yangshan County, Guangdong Province.

[Source: Guangzhou GUANGDONG HUABAO [GUANGDONG PICTORIAL] in Chinese No 3, 1984 p 27]

CSO: 4013/184

END