

AD \_\_\_\_\_

GRANT NUMBER DAMD17-96-1-6065

TITLE: Diagnostic Antigens of "Leishmania tropica"

PRINCIPAL INVESTIGATION: Steven G. Reed, Ph.D.

CONTRACTING ORGANIZATION: Infectious Disease Research Institute  
Seattle, Washington 98104

REPORT DATE: June 1997

TYPE OF REPORT: Annual

PREPARED FOR: Commander  
U.S. Army Medical Research and Materiel Command  
Fort Detrick, Frederick, Maryland 21702-5012

DISTRIBUTION STATEMENT: Approved for public release;  
distribution unlimited

The views, opinions and/or findings contained in this report are those of the author(s) and should not be construed as an official Department of the Army position, policy or decision unless so designated by other documentation.

19980427 183

DTIC QUALITY INSPECTED 3

# REPORT DOCUMENTATION PAGE

*Form Approved*  
*OMB No. 0704-0188*

Public reporting burden for this collection of information is estimated to average 1 hour per response, including the time for reviewing instructions, searching existing data sources, gathering and maintaining the data needed, and completing and reviewing the collection of information. Send comments regarding this burden estimate or any other aspect of this collection of information, including suggestions for reducing this burden, to Washington Headquarters Services, Directorate for Information Operations and Reports, 1215 Jefferson Davis Highway, Suite 1204, Arlington, VA 22202-4302, and to the Office of Management and Budget, Paperwork Reduction Project (0704-0188), Washington, DC 20503.

<b>1. AGENCY USE ONLY (Leave blank)</b>		<b>2. REPORT DATE</b> June 1997	<b>3. REPORT TYPE AND DATES COVERED</b> Annual (1 Jun 96 - 31 May 97)	
<b>4. TITLE AND SUBTITLE</b> Diagnostic Antigens of "Leishmania tropica"			<b>5. FUNDING NUMBERS</b> DAMD17-96-1-6065	
<b>6. AUTHOR(S)</b> Steven G. Reed, Ph.D.				
<b>7. PERFORMING ORGANIZATION NAME(S) AND ADDRESS(ES)</b> Infectious Disease Research Institute Seattle, Washington 98104			<b>8. PERFORMING ORGANIZATION REPORT NUMBER</b>	
<b>9. SPONSORING/MONITORING AGENCY NAME(S) AND ADDRESS(ES)</b> Commander U.S. Army Medical Research and Materiel Command Fort Detrick, Frederick, MD 21702-5012			<b>10. SPONSORING/MONITORING AGENCY REPORT NUMBER</b>	
<b>11. SUPPLEMENTARY NOTES</b>				
<b>12a. DISTRIBUTION / AVAILABILITY STATEMENT</b> Approved for public release; distribution unlimited			<b>12b. DISTRIBUTION CODE</b>	
<b>13. ABSTRACT (Maximum 200)</b>  The deployment of troops during the Gulf War resulted in exposure of individuals to the parasite <i>Leishmania tropica</i> . In some individuals this exposure has resulted in an unusual pathology, with a wide range of symptoms, including fever, nausea, and fatigue. The number of infected individuals remains unknown at this time due to the extreme difficulty in isolation of the parasite combined with a lack of common symptoms to aid in diagnosis. Therefore, there is an urgent need to develop sensitive methods to detect infection by <i>L. tropica</i> , or related species, in military personnel. We have previously isolated and characterized <i>L. tropica</i> antigens reactive with sera from <i>L. tropica</i> infected Desert Storm soldiers. The effort in the past year has been to further evaluate the diagnostic capabilities of a previously identified <i>L. tropica</i> antigen, through testing and optimization of synthetic peptides derived from this antigen. Effort has also been directed at recovery of additional immunodominant <i>Leishmania</i> antigens, specifically potent T cell antigens secreted by <i>Leishmania</i> promastigotes. Strategies to identify promastigote secreted antigens have resulted in the isolation of several novel antigens. These antigens are currently being expressed and evaluated both for cellular responses and serological reactivity in <i>L. tropica</i> infected individuals.				
<b>14. SUBJECT TERMS</b> Gulf War Illness Leishmania, parasite, viscerotropic			<b>15. NUMBER OF PAGES</b> 12	
			<b>16. PRICE CODE</b>	
<b>17. SECURITY CLASSIFICATION OF REPORT</b> Unclassified	<b>18. SECURITY CLASSIFICATION OF THIS PAGE</b> Unclassified	<b>19. SECURITY CLASSIFICATION OF ABSTRACT</b> Unclassified	<b>20. LIMITATION OF ABSTRACT</b> Unlimited	



## TABLE OF CONTENTS

Front Cover.....	1
Report Documentation Page.....	2
Foreword.....	3
Table of Contents.....	4
Introduction.....	5
Body.....	6
Conclusions.....	8
References.....	9
Appendices.....	10

## INTRODUCTION

Work performed over the previous twelve month period focused on three areas. First, continued work was performed on a peptide derived from the repeated portion of *L. tropica* antigen, Lt-1 (1). ELISA based assays were optimized, and data was generated to better determine the specificity and sensitivity of the peptide, using additional sera from non-deployed disease-free individuals, gulf war veterans, and cutaneous *L. tropica* patients.

Second, additional peptides derived from the Lt-1 repeat region and the repeat region from an additional *L. tropica* antigen, Lt-4, were evaluated as additional diagnostic components in an ELISA based assay using normal and gulf war VTL sera.

Third, an effort has been made to identify the antigenic components secreted or shed by *Leishmania* promastigotes. We have concentrated on expression cloning using sera from animals immunized with secreted protein from *Leishmania* promastigotes. We have identified several antigens of interest from *L. tropica*, *L. major*, and *L. chagasi* libraries. These antigens are currently being expressed and evaluated in cellular assays to determine their stimulatory potential and possible inclusion in a confirmatory diagnostic cellular based assay.

## BODY

The emphasis of work over the twelve month period included the optimization of the reactive epitope contained within the thirty-three amino acid repeat present in the Lt-1 antigen. Previous work with a subclone, Lt-1r, that encoded approximately one and one-third repeat, demonstrated the reactive epitope was present within this forty-five amino acid stretch. Because of continuing specificity problems with the Lt-1r recombinant, peptides were synthesized and evaluated. Three overlapping 20 amino acid peptides (Lt1r1, Lt1r2, Lt1r3) covering the 33 amino acid repeat failed to demonstrate reactivity with VTL patient sera.

Four larger peptides were synthesized representing overlapping portions of the first two repeats present in the Lt-1 recombinant. These were Lt1r4 (45 amino acid), Lt1r5 (33 amino acid), Lt1r6 (50 amino acids), and Lt1r7 (66 amino acids). These four peptides were evaluated on both VTL patient sera and normal sera in an ELISA based assay. Lt1r4 and Lt1r7 demonstrated increased reactivities with VTL patient sera compared to that seen with normal sera. Both of the peptides were superior to the Lt1r recombinant, with enhanced specificity. Lt1r4 demonstrated better specificity than Lt1r7, likely due to a single degeneracy present in the second repeat of the Lt1r7 peptide, but not present in the Lt1r4 peptide.

ELISA assays using Lt1r4 were optimized for antigen level, sera dilution, and reporting system. An increased level of sensitivity was achieved using a reporting system of Protein A-biotin, Streptavidin-HRP (horseradish peroxidase), and TMB (3, 3', 5, 5'-tetramethylbenzidine). Sensitivity and specificity of the Lt1r4 peptide was further assessed by using additional sera from non-deployed disease-free individuals, gulf war veterans, and Turkish cutaneous *L. tropica* patients. In an ELISA based assay (Fig. 1), a comparison of *L. tropica* infected cutaneous patient sera to a panel of normals yielded a sensitivity of 50% (6/12) and a specificity of 98.5% (67/68) using a cut-off established at normal mean + three standard deviations.

A panel of sera was received from a collaboration with Dr. Mike Riscoe (Portland Veterans Affairs Medical Center) involving the program project 'Unexplained Illness among Veterans of the Persian Gulf Conflict'. This panel, including sera from both symptomatic and asymptomatic individuals, was tested for reactivity with the Lt1r4 peptide (Fig. 2). A surprisingly high number of sera (10/110) had reactivities above the normal distribution (Figure 1), but it is unclear at this time whether these reactivities are indicative of an infection by *L. tropica*. Additional information obtained on this group in the course of the study may offer some clarification and contribute to the generation of an appropriate group of control sera useful in the evaluation of additional candidate diagnostic antigens.

A titration of sera from four of the high Army samples, one Turkish cutaneous leishmaniasis, and three normals (including the one normal found above mean + 3 SD) is shown in Figure 3, clearly indicating specific differential reactivity with the Lt1r4 peptide.

An additional serological epitope had been previously localized to a 39 amino acid repeat present in two overlapping *L. tropica* antigens, Lt-4 and Lt-5. A peptide approach was emphasized to maximize specificity. Two peptides were synthesized representing overlapping portions of the first two repeats present in the Lt-4 recombinant. These were Lt4pep1 (39 amino acids) and Lt4pep2 (78 amino acids). These two peptides were evaluated in an ELISA based assay and were not significantly more reactive with VTL patient sera than with normal sera (data not shown).

Due to the likelihood that multiple serological epitopes will be necessary to achieve an acceptable level of sensitivity, we have cloned an additional *L. tropica* gene by expression cloning using mouse sera immunized with promastigote secreted protein mixture. The resulting *L. tropica* gene cloned shows a high degree of homology with a family of thiol-specific antioxidant proteins. The gene has been re-engineered for expression (addition of histidine tag) and recombinant protein purified. The recombinant is currently being evaluated with VTL and normal sera in an ELISA based

format. The recombinant will also be tested in cellular assays using peripheral blood mononuclear cells from *L. tropica* infected cutaneous leishmaniasis patients from Saudi Arabia, recently received as part of a collaborative effort with Dr. Hashim Ghalib (King Saud University, Abha, Saudi Arabia).

An additional method used to isolate immunodominant antigens secreted or shed by *Leishmania* promastigotes has involved expression cloning of leishmania genomic and cDNA libraries with rabbit sera immunized with the promastigote secreted mixture. This has resulted in the isolation of several novel *Leishmania* genes. Genomic southern analysis has shown that all three genes are highly conserved among the different *Leishmania* species including *L. tropica* (data not shown). Recombinant antigens encoded by the three genes have been expressed and purified, and will be tested for serological reactivity and stimulatory activity in cellular assays.

Important progress has also been made towards the two major limitations in the development of a diagnostic for *L. tropica*. The first limitation is the lack of availability of a proper panel of control sera from individuals deployed to the Gulf during Operation Desert Storm but had no chance of exposure to *L. tropica*. A collaboration with Dr. Mike Riscoe at Portland Veterans Affairs Medical Center involving Gulf War Veterans may provide a number of sera from individuals with limited or incomplete deployment. The second limitation involves the need for additional sera from individuals with confirmed *L. tropica* infection. A longstanding collaborator, Dr. Hashim Ghalib, has recently re-located to Abha, Saudi Arabia, an area endemic for *L. tropica*. Through this collaboration, we have recently received both sera and PBMC from *L. tropica* infected individuals with cutaneous leishmaniasis. An additional collaboration with Dr. Nevin Turgay (Ege University Medical School, Izmir, Turkey), has provided a panel of sera from regional cases of cutaneous leishmaniasis caused by *L. tropica*.

The recent acquisition of a number of *L. tropica* infection sera with demonstrably higher titers against *L. tropica* antigens, including rLt-1, has simplified the approach of expression screening with patient sera. We have recently initiated additional expression screening of a genomic *L. tropica* library with *L. tropica* infection sera that do not recognize the Lt1r4 peptide. In addition we are constructing an *L. tropica* amastigote cDNA library for additional screening.

## CONCLUSIONS

The focus of work in this first year has included the further evaluation of known *L. tropica* antigens reactive with *L. tropica* infected military personnel. Persistent reactivity with normal sera led to the evaluation of peptides designed against repeated portions of the antigens. Evaluation of multiple peptides derived from the 33 amino acid repeat present in Lt-1, identified the best candidate, Lt1r4, which was optimized in an ELISA based assay. Use of the peptide did increase specificity to the current estimate of 98%, but sensitivity was not increased, estimated at approximately 50% in both cutaneous leishmaniasis and viscerotropic leishmaniasis. Although it is possible that the sensitivity could be increased by further generation and characterization of peptide variants, it is likely more fruitful to identify additional antigens that can complement the existing peptide. To that end, peptides derived from another *L. tropica* antigen known to react with VTL patient sera (rLt4 ) were generated and evaluated. These peptides failed to show increased reactivity with VTL sera. An additional recombinant reactive with VTL patient sera (Lt3) is currently being engineered for expression.

Another source of new antigens is the secreted or shed material from promastigotes, which contains potent T cell antigens. In the past year, effort has been made to identify these antigens, resulting in the recovery of a number of candidate clones, all of which have now been expressed and purified in milligram quantities. In addition, several other clones have been recovered that are still being characterized.

One area of work that will be emphasized is the discovery of additional antigens by expression screening with patient sera. Sera have been obtained through the collaborations with Dr. Nevin Turgay and Dr. Hashim Ghalib. The panel of *L. tropica* cutaneous sera now available, with generally higher titers than observed in VTL patient sera, will be valuable, both in expression screening and evaluation of reactivity of candidate antigens.

## REFERENCES

1. Dillon, D.C., C.H. Day, J.A. Whittle, A.J. Magill, and S.G. Reed. 1995. Characterization of a *Leishmania tropica* antigen that detects immune responses in Desert Storm viscerotropic leishmaniasis patients. **Proc. Nat. Acad. Sci. USA** 92:7981-7985.

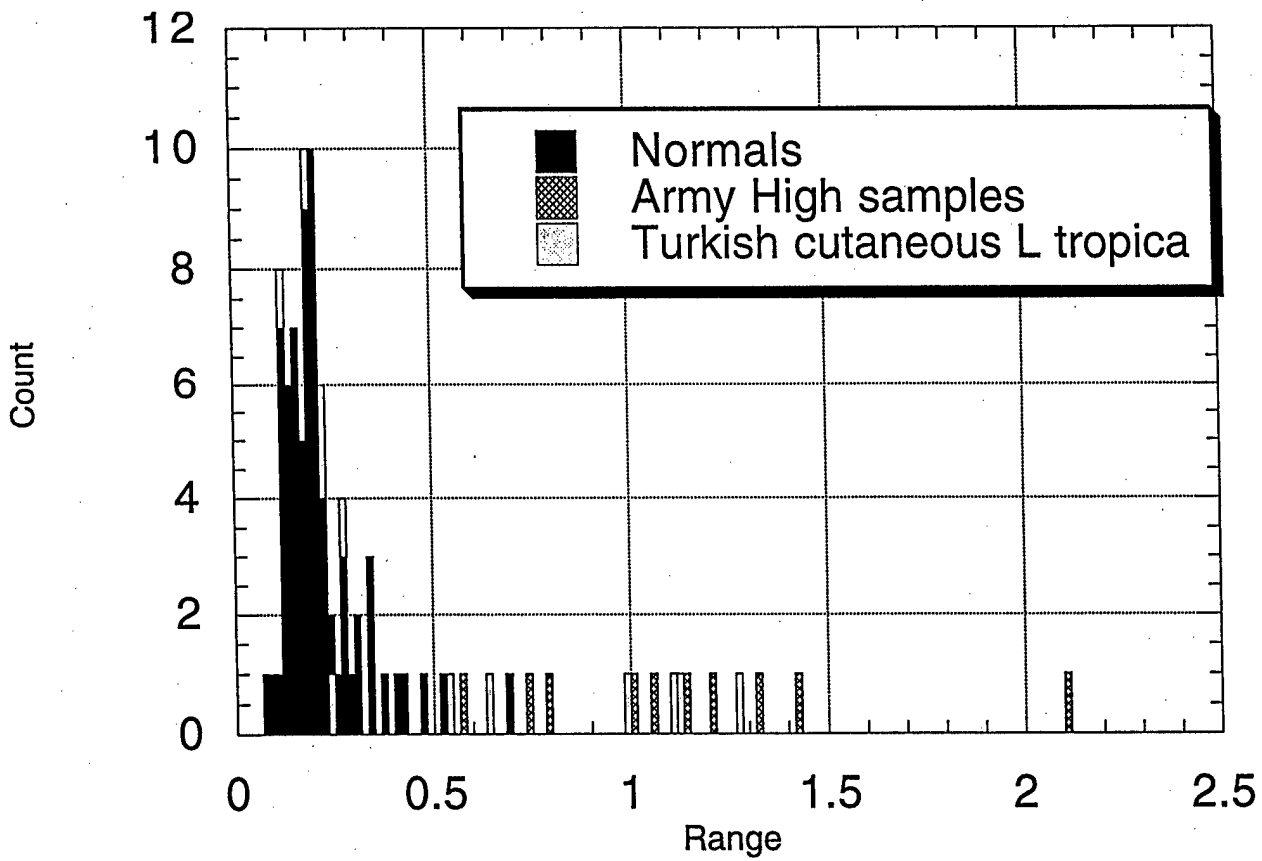


Figure 1. Distribution of reactivity of Lt1r4 peptide with patient and normal sera. Sera from normal individuals (n=68), *L. tropica* cutaneous leishmaniasis patients (n=12) and elevated peptide reactive Gulf War Veterans (n=10) used at 1:50 dilution in an ELISA based assay. Lt1r4 peptide was used at 1 ug /well. Bioin-Protein A (1:5000) and streptavidin-HRP (1:8000) were used and the substrated used was TMB.

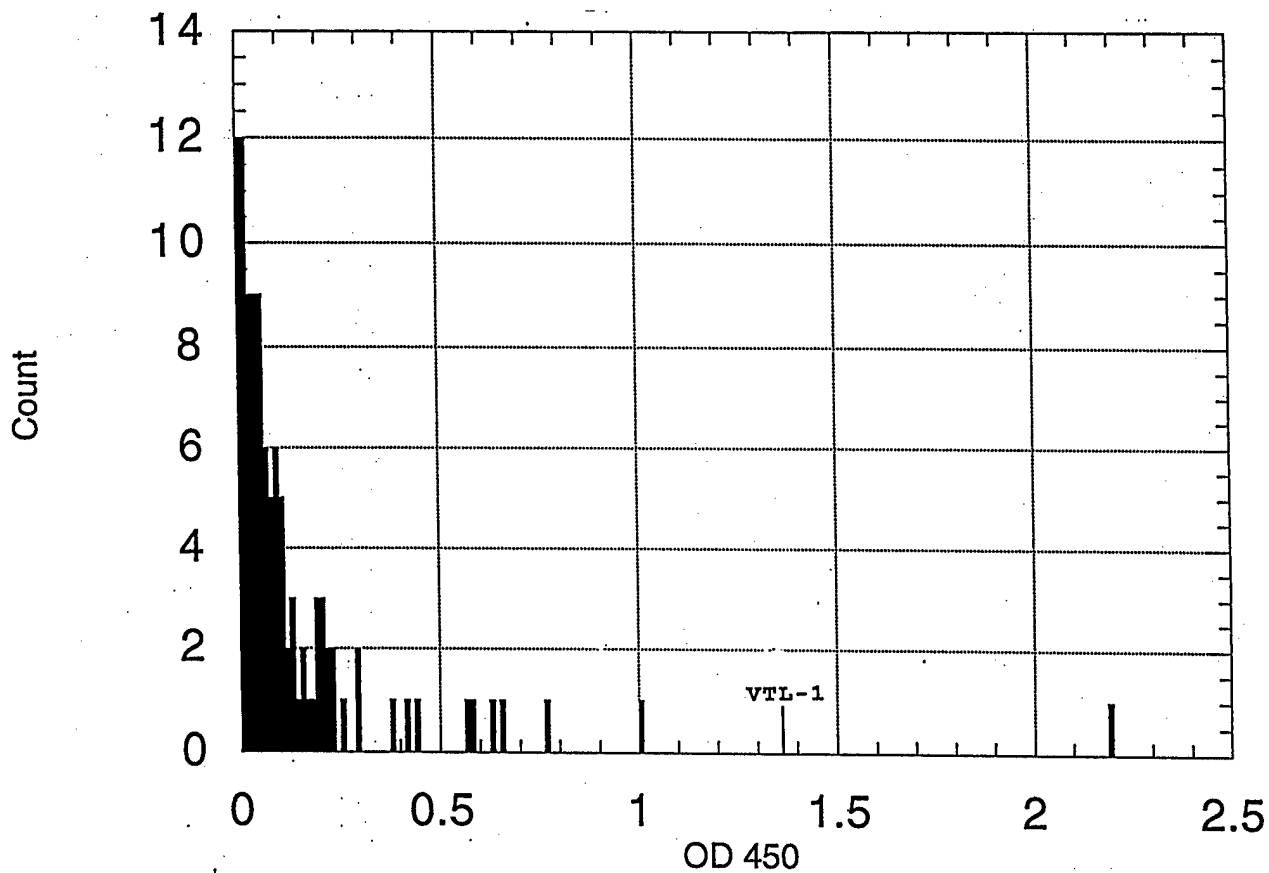


Figure 2. Distribution of reactivity of Lt1r4 peptide with Gulf War Veteran sera. Sera from Gulf War Veterans (n=110) used at 1:50 dilution in an ELISA based assay. Lt1r4 peptide was used at 1 ug /well. Bioin-Protein A (1:5000) and streptavidin-HRP (1:8000) were used and the substrated used was TMB. Reactivity of confirmed viscerotropic leishmaniasis sera (VTL-1) shown.

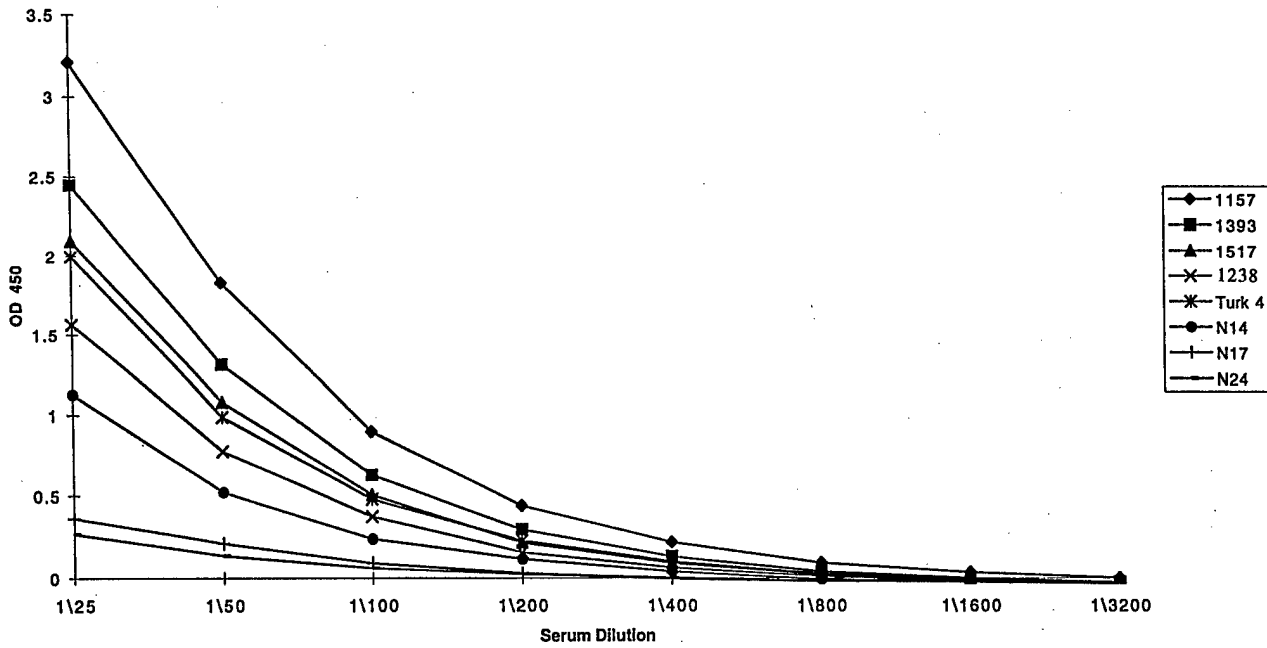


Figure 3. Titration of Sera . Titration of four reactive sera from Gulf War Veterans (1157, 1393, 1517, 1238), one reactive Turkish *L. tropica* cutaneous sera, and three normal sera (N14-normal sera sample above mean + 3 SD cut-off, N17, N24). Lt1r4 peptide was used at 1 ug /well. Bioin-Protein A (1:5000) and streptavidin-HRP (1:8000) were used and the substrated used was TMB.