



Mississippi State UNIVERSITY

Center for Air Sea Technology

BAROTROPIC TIDAL PREDICTIONS AND VALIDATION IN A RELOCATABLE MODELING ENVIRONMENT

by

Avichal Mehra, Ranjit Passi, Lakshmi Kantha,
Steven Payne, and Shuvobroto Brahmachari

Technical Report 01-98 (REVISED)*

20 MAY 1998

*THIS REPLACES PREVIOUSLY ISSUED MSU CAST TECHNICAL REPORT
01-98 DATED 1 APRIL 1998

19980702 141

Approved for public release; distribution is unlimited.
Mississippi State University Center for Air Sea Technology
Stennis Space Center, MS 39529-6000

TECHNICAL REPORT 01-98 (REVISED)

**BAROTROPIC TIDAL PREDICTIONS
AND VALIDATION
IN A RELOCATABLE MODELING ENVIRONMENT**

by

**AVICHAL MEHRA¹, RANJIT PASSI², LAKSHMI KANTHA⁴, STEVE PAYNE³,
and SHUVOBROTO BRAHMACHARI³**

¹ Postdoctoral Assistant, Mississippi State University Center for Air Sea Technology, Stennis Space Center, MS 39529-6000

² Senior Research Scientist, Mississippi State University Center for Air Sea Technology, Stennis Space Center, MS 39529-6000

³ Research Assistant I, Mississippi State University Center for Air Sea Technology, Stennis Space Center, MS 39529-6000

⁴ Professor, Colorado Center for Astrodynamics Research, University of Colorado, Campus Box 431, Boulder, CO 80309-0431

20 MAY 1998

This effort was supported by the Department of the Navy, Office of Naval Research Under Grant N00014-95-1-0203 and the Naval Oceanographic Office under NASA Contract NAS13-564 Delivery order 125 with Mississippi State University. The opinion, findings, conclusions, and recommendations expressed in this publication are those of the authors and do not necessarily reflect the views of the U.S. Government. No official endorsement should be inferred.

Table of Contents

Page Number

Cover Sheet	i
Table of Contents	ii
List of Figures	iii
Executive Summary	1
1. INTRODUCTION	2
2. MODEL DESCRIPTION	3
3. METHODOLOGY	4
3.1 Case I: Yellow Sea	4
3.1.1 Model Setup	4
3.1.2 Results	6
3.2 Case II: North Atlantic	6
3.2.1 Model Setup	6
3.2.2 Results	11
3.3 Case III: U.S. West Coast	11
3.3.1 Model Setup	11
3.3.2 Results	14
4. RELOCATABLE MODELING ENVIRONMENT (RME) GUI	14
5. CONCLUSIONS	17

ACKNOWLEDGEMENTS

REFERENCES

DISTRIBUTION LIST

REPORT DOCUMENTATION

LIST OF FIGURES

	Page Number
Figure 1. Yellow Sea Domain	5
Figure 2. Snapshot of Barotropic Currents	7
Figure 3. Comparison of Tidal Current Components in Yellow Sea . .	8
Figure 4. North Atlantic Domain (Coarse)	9
Figure 5. North Atlantic Domain (Fine)	10
Figure 6. Comparison of Tidal Current Components in the North Atlantic at Station BED60 (Moody Charts)	12
Figure 7. U.S. West Coast	13
Figure 8. Comparison of Sea Surface Elevations in San Diego Bay	15

BAROTROPIC TIDAL PREDICTIONS AND VALIDATION IN A RELOCATABLE MODELING ENVIRONMENT

EXECUTIVE SUMMARY

Under funding from the Office of Naval Research (ONR) and the Naval Oceanographic Office (NAVOCEANO), the Mississippi State University Center for Air Sea Technology (CAST) has been working on implementing a Relocatable Modeling Environment (RME) at NAVOCEANO to provide a uniform and unbiased infrastructure for efficiently configuring numerical models in any geographic/oceanic region. With our current emphasis on ocean tidal modeling, CAST has adopted the Colorado University's numerical ocean model, known as CURReNTSS (Colorado University Rapidly Relocatable Nestable Storm Surge) Model, as the model of choice. During the RME development process, CURReNTSS has been relocated to several coastal oceanic regions, providing excellent results that demonstrate its veracity. Only Case I, the Yellow Sea, was funded by NAVOCEANO. The other cases are included in this report to substantiate the validity of the model and its relocatability using the CAST RME in other geographic regions. This report documents the model validation results and provides a brief description of the Graphic User Interface (GUI). The following points are considered important:

- CURReNTSS is Colorado University's version of the Princeton Ocean Model incorporating relevant up-to-date physics.
- CURReNTSS provides the capability to assimilate satellite sea surface height (SSH) and tide-gauge data to provide accurate predictions of SSH and depth-averaged currents.
- CURReNTSS has been relocated using the CAST RME GUI to several coastal regions including the West Coast of Africa, San Diego Bay, Yellow Sea, and the North Atlantic Bight.
- The CAST RME GUI provides a user-friendly, automated capability for end-to-end configuration of CURReNTSS in a modular form including Grid Generation, Preprocessing, Model Packaging, Remote Model Execution, and Post-Processing.
- CURReNTSS embedded in the RME GUI offers itself as a prototype for transition to NAVOCEANO.

1. INTRODUCTION:

The Navy's warfare theater has moved from blue waters to the littoral regions where engagements are becoming increasingly frequent and significant. Successful execution of such operations in regions of interest requires an all-around quick-and-efficient response that depends on tidal heights and currents information. Because of the difficulties and costs involved in providing real-time measurements of such data, the use of numerical models that can provide accurate predictions of tidal heights and currents has become a practical alternative. For a model to be deployed operationally, it must satisfy some minimum requirements that include:

- The model should be readily relocated in any littoral region of interest;
- It should possess the correct physics so as to reproduce tidal phenomena for all regions of deployment;
- It should be fine-tuned with some minimal but readily available data to provide accurate predictions;
- And finally, the model must be thoroughly validated against available observations under varied geographic and bathymetric regimes.

This report describes one such model, CURReNTSS (Colorado University's Rapidly Relocatable Nestable Tides and Storm Surge) Model, which has been subjected to these rigors. Under ONR funding, the University of Colorado has developed CURReNTSS, which is currently a two-dimensional tidal model and the Mississippi State University Center for Air Sea Technology has embedded the model in a Relocatable Modeling Environment (RME), that provides a user-friendly, interactive interface that allows quick relocation of the model in any oceanic region for which databases and forcing fields exist. Under NAVOCEANO funding, the model was implemented and tested for NAVOCEANO use.

CURReNTSS is an enhanced version of the Princeton Ocean Model that incorporates the relevant up-to-date physics and has been employed in a variety of ocean modeling applications. It assimilates satellite sea surface height (SSH) and tide-gauge data to acquire an accurate nowcast state that leads to accurate predictions of SSH and barotropic currents. During the RME development process, CURReNTSS has been relocated in several coastal oceanic regions, providing excellent results that demonstrate its versatility.

This report documents the model validation results of CURReNTSS from three coastal regions: U.S West Coast (San Diego Bay), Yellow Sea, and the North Atlantic (Bay of Fundy). In an earlier study (Mehra et al., 1996), we provided the results of model implementation near the West Coast of Africa. Section 2 provides a description of the numerical model CURReNTSS, and Section 3 discusses the methodology used and results obtained. In Section 4, we give a brief description of the RME GUI, which has been completely revamped to provide an end-to-end automation of the tidal model relocation. Finally, we end by summarizing our conclusions in Section 5.

2. MODEL DESCRIPTION

MSU CAST and the University of Colorado have implemented CURReNTSS, a two-dimensional tidal model, embedded in RME that allows for quick relocation of the model to any oceanic region for which bathymetry and forcing fields exist. CURReNTSS is a finite difference, explicit, fully non-linear, vertically-integrated barotropic model that assimilates tidal component data from satellite altimetry, coastal tide gages, and from available bottom pressure gages. The model uses direct astrodynamical forcing, and it can incorporate surface forcing (winds stress and pressure fields) from atmospheric models to predict storm surges. The open boundary conditions, obtained from a global run of the model at 1/5th degree resolution, are pre-stored and are readily accessible from the GUI.

The GUI incorporates bathymetry from the ETOPO5 database and provides capability to edit and interpolate it to the model grid. It also allows the modeler to import bathymetry from other databases into the GUI. The model can be run with any number of tidal components including long term and compound tides. It employs a simple SSH data assimilation procedure that replaces the model predicted SSH at pre-determined intervals by a weighted sum of the model prediction and the observed SSH from the tide/bottom pressure at that grid point; the weights are determined a priori. The tide gage data comes from the database at the International Hydrographic Organization (1979), supplemented by the Admiralty charts (1993). This database is accessible via the GUI, and tidal components from relevant tidal stations are easily extracted for assimilation.

For applications requiring high-resolution sea levels and currents along a coast, the procedure is to nest a high-resolution local barotropic model at the desired resolution (1-5 km), within a larger domain at a relatively coarser resolution (5-20 km). The nesting approach works best when the bathymetry and surface forcing data bases for each nested domain have the appropriate

resolution. The approach then runs the coarse resolution CURReNTSS model with tidal boundary conditions derived from the CU global tidal model (that assimilates altimetric and tide gauge data) and atmospheric pressure and wind stress derived from FNMOC products. The output of this coarse model is saved on the boundaries of the nested model at each time step for providing the boundary conditions to the nested model.

Sea level predictions from this fully integrated 2D model have already been validated against tidal station data. The validity of predicted sea levels and barotropic tidal currents from model results is the subject of this report.

3. METHODOLOGY

The barotropic influences weigh heavily on the coastal and shallow waters, and the primary objective herein was to perform validation of sea levels and barotropic tidal currents with available observational data in suitable areas. Two validation studies of the predicted tidal currents were performed at different resolutions in the Yellow Sea and in the North Atlantic. Another validation study for the sea surface levels was performed on the U.S West Coast (San Diego Bay). For these regions, an enhanced version of the CURReNTSS model was used which is now capable of assimilating altimetry data, e.g., from TOPEX, for improved predictions of tidal elevations and currents. The altimetric tides from Topex Poseidon data, though very accurate, are only yet available for the M2 component.

3.1 Case I: Yellow Sea

For the first study, the CURReNTSS model was implemented in the Yellow Sea at a resolution of 1/5th degree. The gridded domain extended from 117.0 to 131.0 E and from 24.0 to 41.0 N as shown in Figure 1. The grid resolution resulted in a 71 by 86 grid. It covered the entire Eastern Chinese coast from Taiwan in the south to Anshan in the north and the entire Yellow Sea. The bathymetry was interpolated from a 1/6 degree Korean topographical database and other high resolution accurate databases provided by NAVOCEANO. The GUI provided data from 31 tidal stations in this region, which were assimilated into the model with a fixed weighing parameter (0.9). Global results available via the GUI were used to set up the boundary conditions for the open boundaries, south and east. Eight primary linear tidal constituents were included in the set up, namely M2, S2, N2, K2, K1, O1, P1 and Q1.

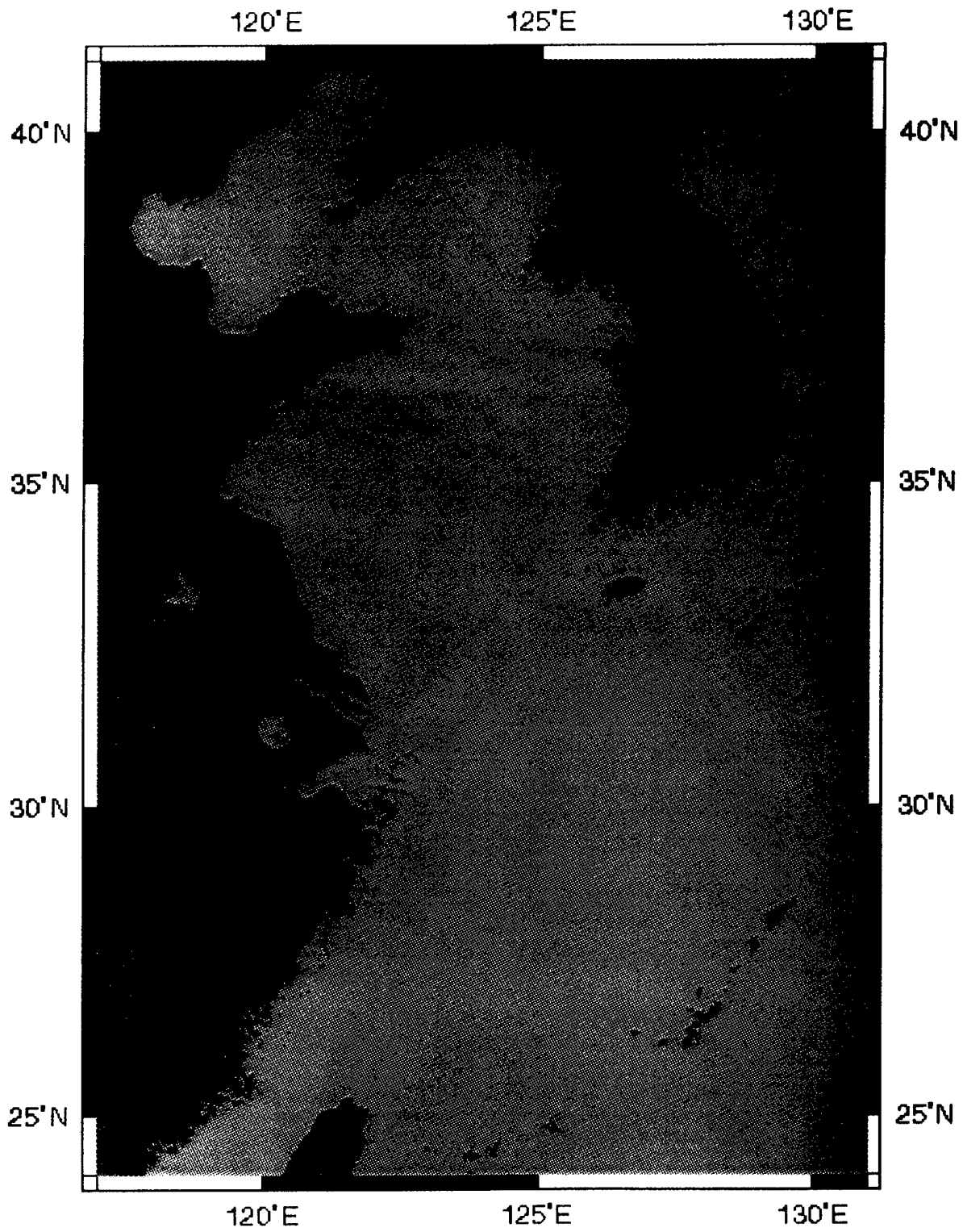


Figure 1: Yellow Sea Domain

The model was run for a period of twenty days with a ramp-up lasting five internal periods. The forcing was provided from astrodynamical tides to predict tidal elevations and currents. The external (barotropic) time step was 24 seconds and the bottom drag coefficient was fixed at 0.0015. A snapshot of barotropic tidal currents for a selected time is shown in Figure 2.

3.1.2. Results

A time series of induced tidal currents was obtained from the model output and compared against observed tidal currents at the nearest available grid point location. The observed tidal currents were measured using an Acoustic Doppler Current Profiler (ADCP) (at approximately 31.05 North and 126.034 East). The model results compared favorably with the observed values (Figure 3). After the initial ramp-up, the predicted tidal current phases matched well although some discrepancies were found in the magnitudes. These can be attributed to the fact that the model value represents the average value of the current over the grid-cell and not at a fixed point in space. Also, the model predicts depth-averaged currents unlike the observations which were obtained at a fixed depth (approximately at 70 % of the total depth).

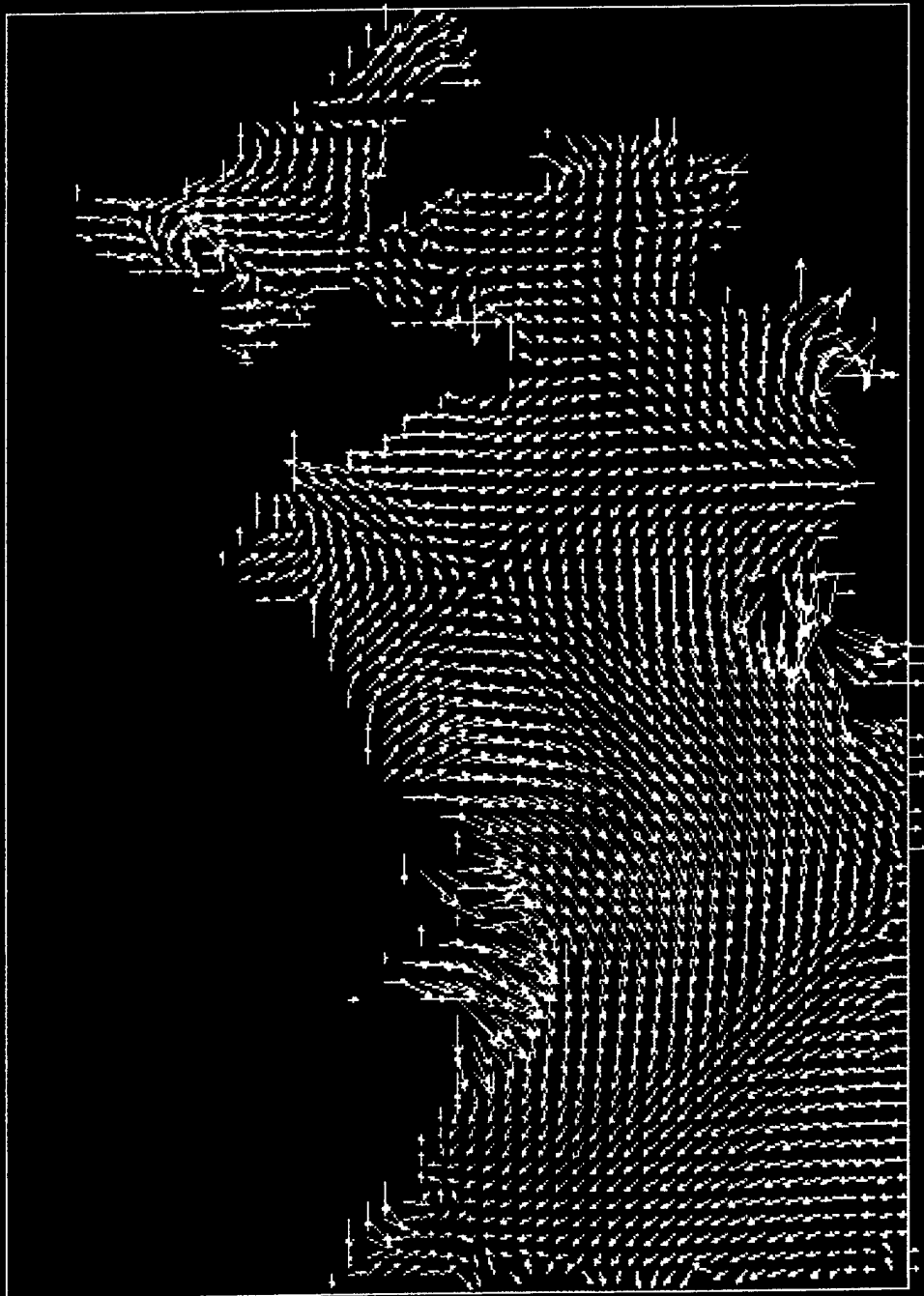
3.2. Case II: North Atlantic

3.2.1. Model Setup

The North Atlantic Bight boasts of some of the highest tidal ranges and fastest tidal currents in the world. The CURReNTSS model was run in a nested fashion at two different resolutions. The larger coarser domain at (1/12) degree resolution covered the entire bight from 77.0 W to 63.0 W and from 35.0 N to 45.0 N (see Figure 4). The nested high resolution fine grid at one minute resolution, which mainly covered the Bay of Fundy and some parts of Gulf of Maine, extended from ~68.0 W to 64.0 W and from 44.5 N to 45.5 N (Figure 5).

An accurate bathymetry was generated by fusing ETOPO5, half minute NOS data and an accurate (half minute) USGS topographic database. The boundary conditions were provided from the GUI as before and tidal station data from 144 gages in the region were assimilated into the model and the model results were saved at the boundary of the nested fine grid. The coarse resolution model was run first for ten days with astrodynamical forcing alone. Next, the fine grid model was run under similar forcing with boundary conditions provided from the encompassing coarse model for ten days.

0.000E+00 0.250E+01
Minimum Maximum



-2.24 -1.75 -1.27 -0.79 -0.30 0.18 0.67 1.15 1.64 2.12 2.61 3.09 3.57 4.09

Fig. 2: Snapshot of Barotropic Tidal Currents overlaid on Tidal Elevations (colored contours) for Yellow Sea.

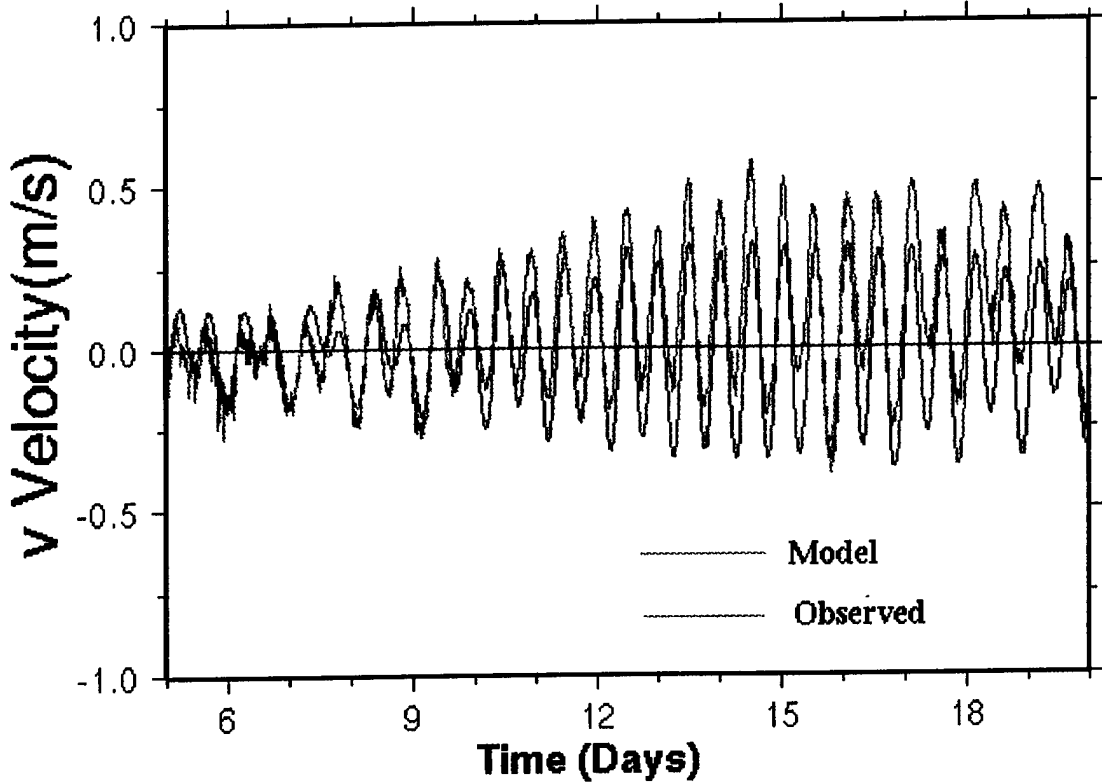
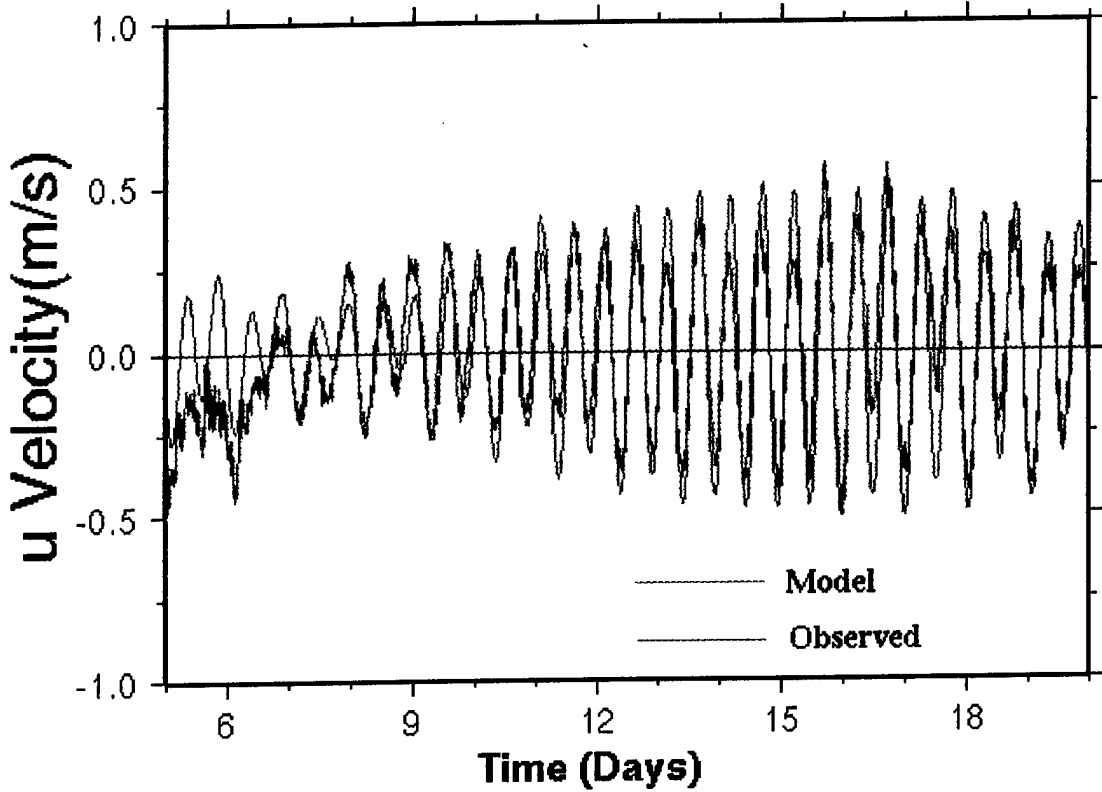


Figure 3: Comparison of Tidal Current Components in the Yellow Sea .

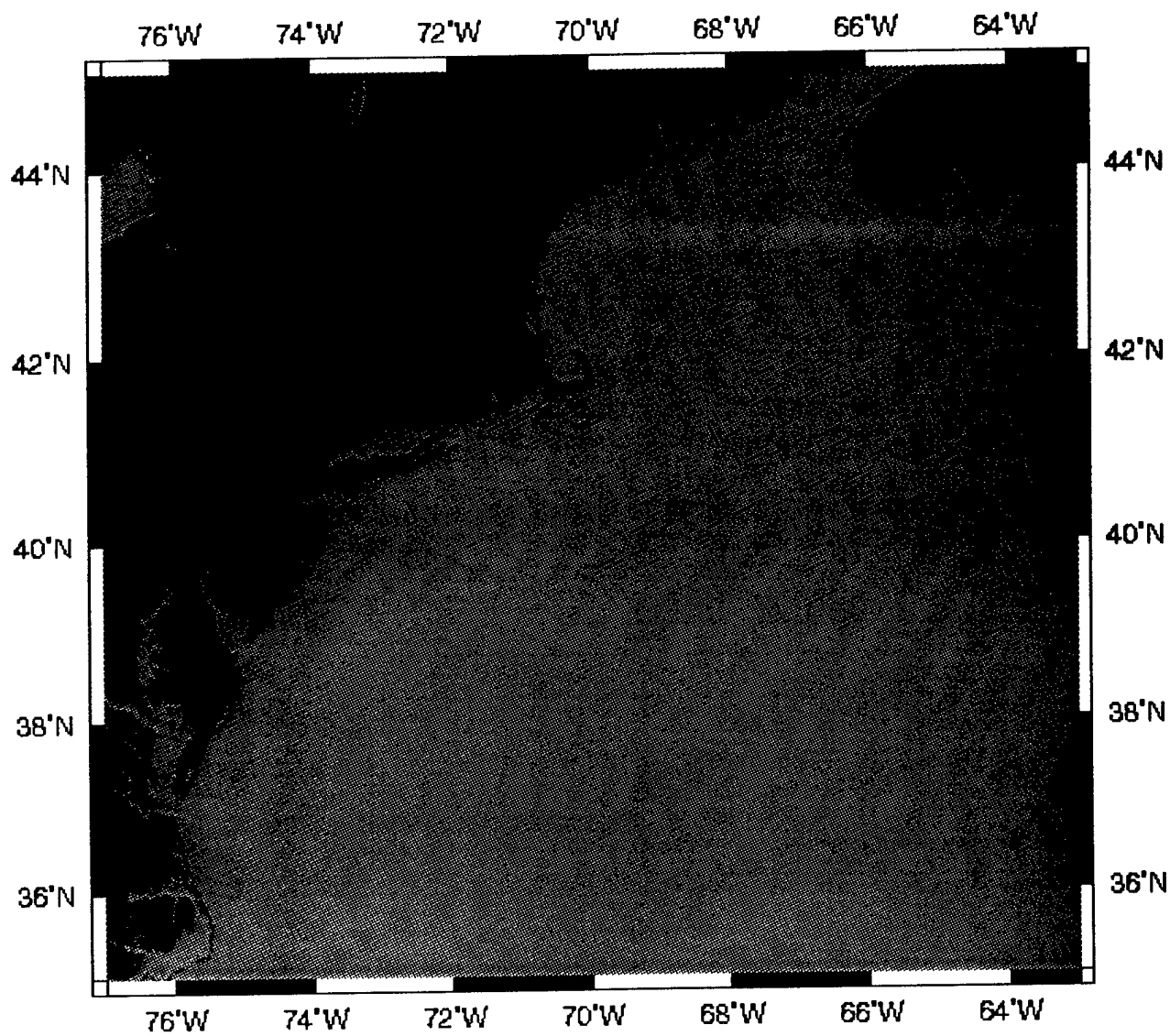


Figure 4: North Atlantic Domain (Coarse)

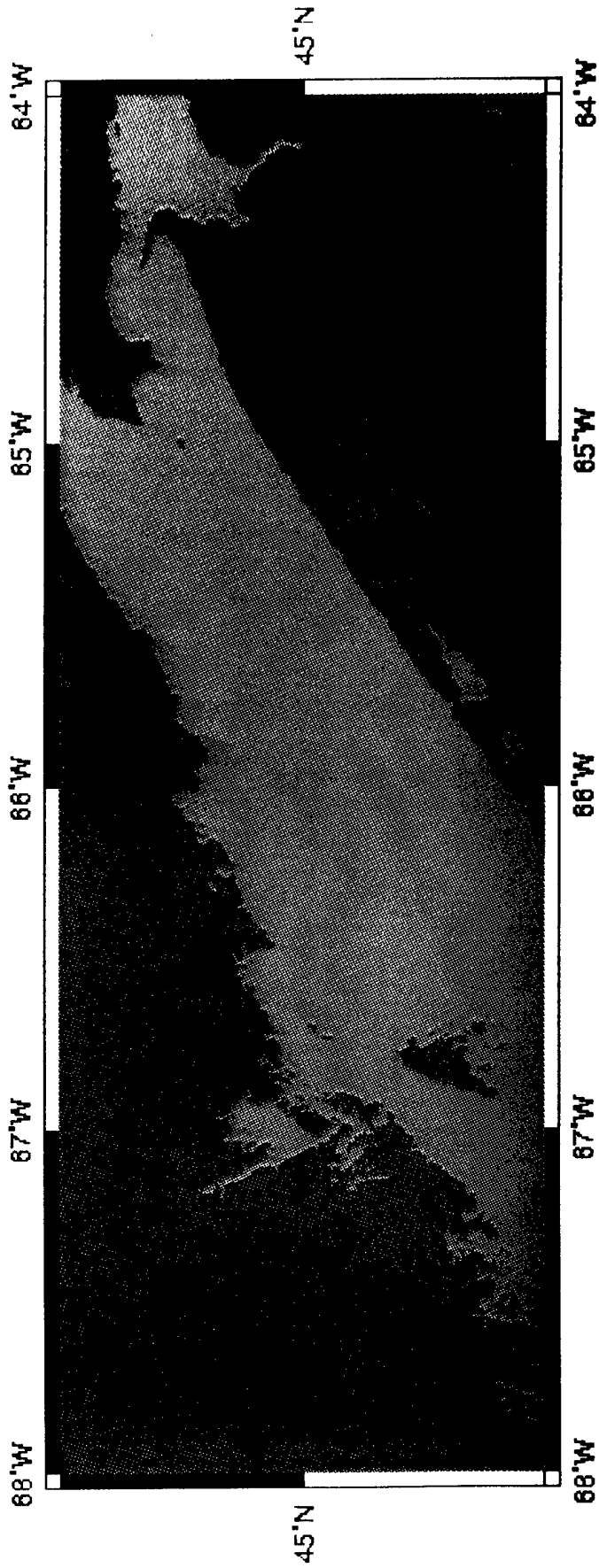


Figure 5: North Atlantic Domain (Fine)

3.2.2. Results

Comparison of model predicted tidal currents and those obtained from USGS charts at one location in Bay of Fundy (BED60) is shown in Figure 6. As before, the time series for observed tidal currents was obtained at a specific depth (71 m above bottom for BED60), unlike the modeling predictions which are barotropic currents. Also, the modeling results are for currents averaged over a grid cell and not at a single point in the domain. As shown, the predictions under estimates the magnitude of currents for BED60. But, the phase of predictions match well with those of the observed results (within 28 minutes for BED 60).

3.3 Case III: U.S. West Coast

3.3.1. Model Setup

The domain for the coarse grid extended from 119.97 to 116.58 W and from 31.87 to 34.5 N (see Figure 7 (a)). The grid resolution was 5 Km resulting in a 64 by 59 grid. It covered the California coast including the cities of San Diego in the south to Santa Barbara in the north. The bathymetry was interpolated from an available high resolution accurate database. The GUI provided data from 9 tidal stations in this region which were assimilated into the model with a fixed weighing parameter (0.9). The GUI was also used to set up the boundary conditions for the open boundaries, south and west, including only seven linear tidal constituents, which were M2, S2, N2, K2, K1, P1 and Q1. The model was run with both the astrodynamical tides and with surface wind forcing (obtained from COAMPS) to predict tides and storm surge. The bottom drag coefficient was chosen as 0.0035, and the coefficients of horizontal mixing were fixed at HORCON = 0.02 and AAA = 20.0. The external (barotropic) time step was 8 seconds.

The nested fine grid was centered around San Diego Bay at a resolution of 1 km, 117.28 to 117.03 W and 32.32 to 32.82 N as shown in Figure 7 (b). The nested domain is also shown "boxed-in" on the larger coarser domain. The total number of grid points at this resolution was 24 by 57. The bathymetry was obtained similarly as above and no tidal station data were assimilated. The boundary conditions for the open boundaries were provided by the output of the coarse model run. The nonlinear horizontal mixing coefficient, AAA, was changed to 2.0 while other coefficients were kept the same. Because of the higher resolution, the time step was reduced to 5 seconds.

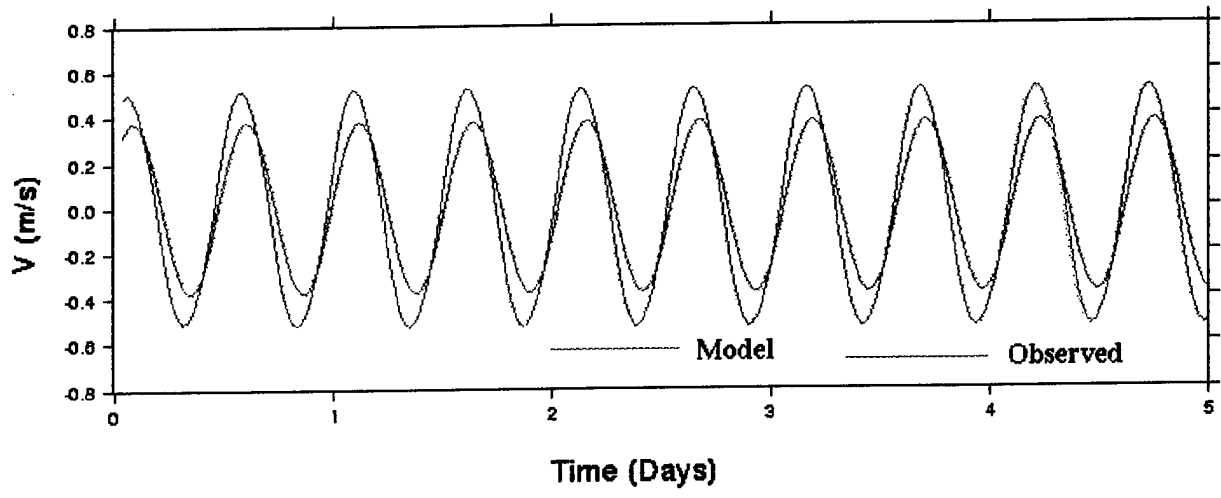
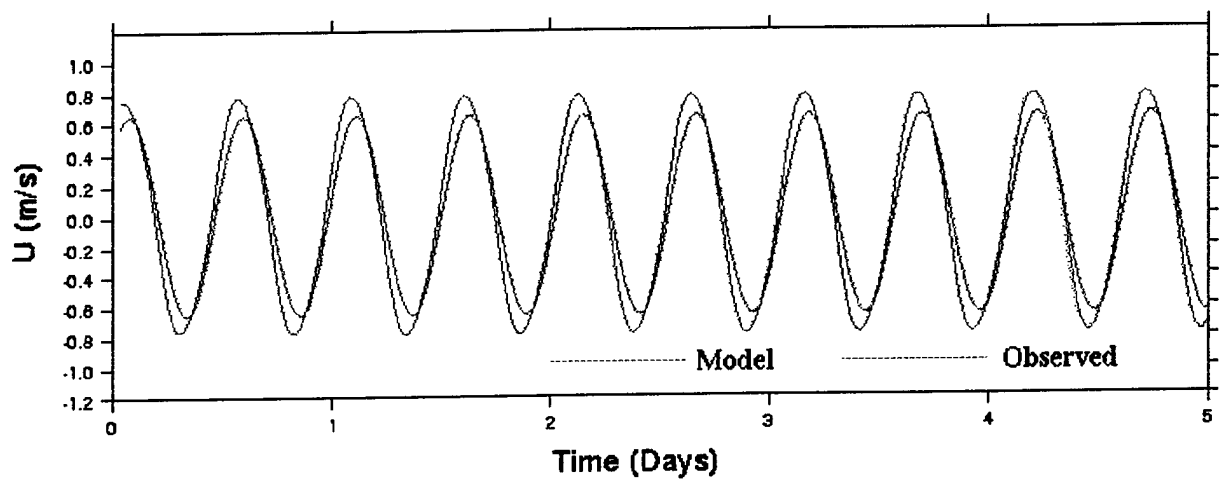


Figure 6: Comparison of Tidal Current Components in the North Atlantic at Station BED60 (Moody Charts).

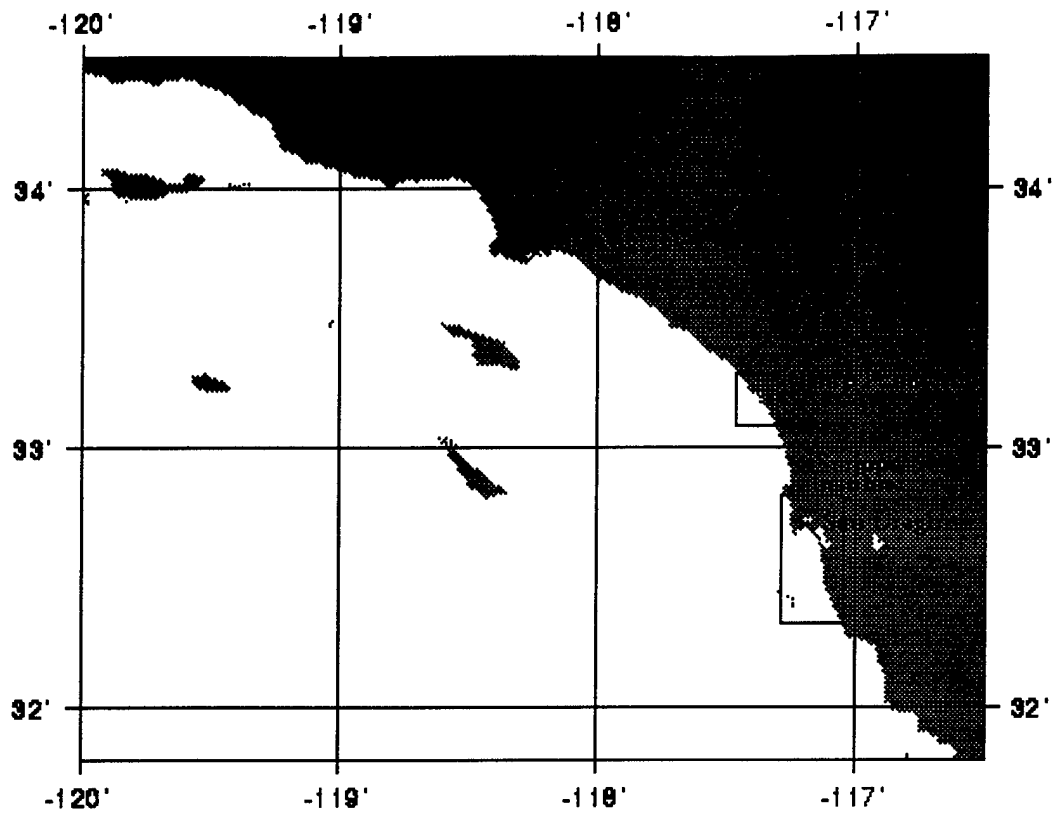


Figure 7 (a): U.S. West Coast (Coarse)

San Diego Bay (~1 km)

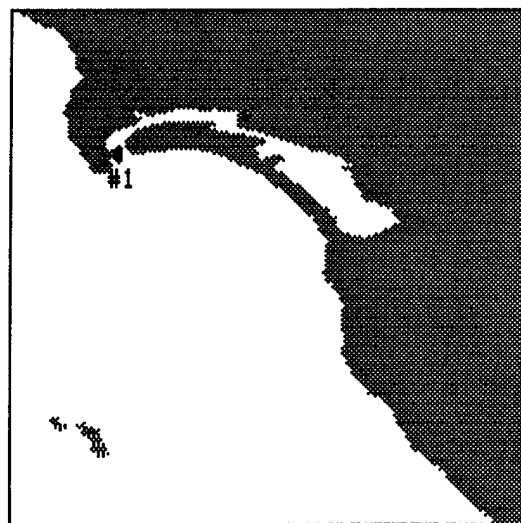


Figure 7 (b): U.S. West Coast (Fine)

3.3.2. Results

Figure 8 shows the time series of wind stress (from COAMPS) and the predicted sea level at one of the grid points located in the fine nested grid near San Diego Bay. It also shows a comparison of observed sea level data from NOS for the time period 3 to 15 January 1995. The data was obtained from a tidal gauge located at 32.71 N and 117.28 W (San Diego Bay), every six minutes. The model was run for the same time period with a one day ramp-up with forcing provided by astrodynamical tides and atmospheric forcing from a triply-nested run of the COAMPS numerical model.

The magnitudes of the model predicted sea surface elevations compare favorably with the observed ones except for a large spike which occurred on the fifth day of comparison. This spike corresponds to a significant sea level pressure drop but model results fail to predict it, the reasons for which remain inconclusive. The phase of the predicted sea levels differs from those of the observed value by an average of one hour.

4. RELOCATABLE MODELING ENVIRONMENT (RME) GUI

The many steps and logistics of setting-up a numerical model in a new region of interest are tedious and labor intensive. Much of this effort can be simplified with modern computer technology. For example, in setting-up a 2-D tidal model, one needs to: specify the domain; define the model grid of a specified resolution; select the appropriate bathymetry database and extract the data; edit the bathymetry for errors such as opening-up closed channels; select and extract ancillary data such as the International Hydrographic Office(IHO) tidal station data and make sure the stations fall on a grid point over water instead of land; edit the ancillary data to correct errors; define the model boundaries; specify the model boundary conditions; generate the model header files; and generate the model input and initialization files.

These steps need to be completed before the model can be run to obtain the first output. This process can consume anywhere from a couple of days to a couple of weeks depending on the complexity of the domain and data. For more complex, 3-D, data assimilating circulation models, there are also other steps. The user is also faced with postprocessing the model output and managing it systematically.

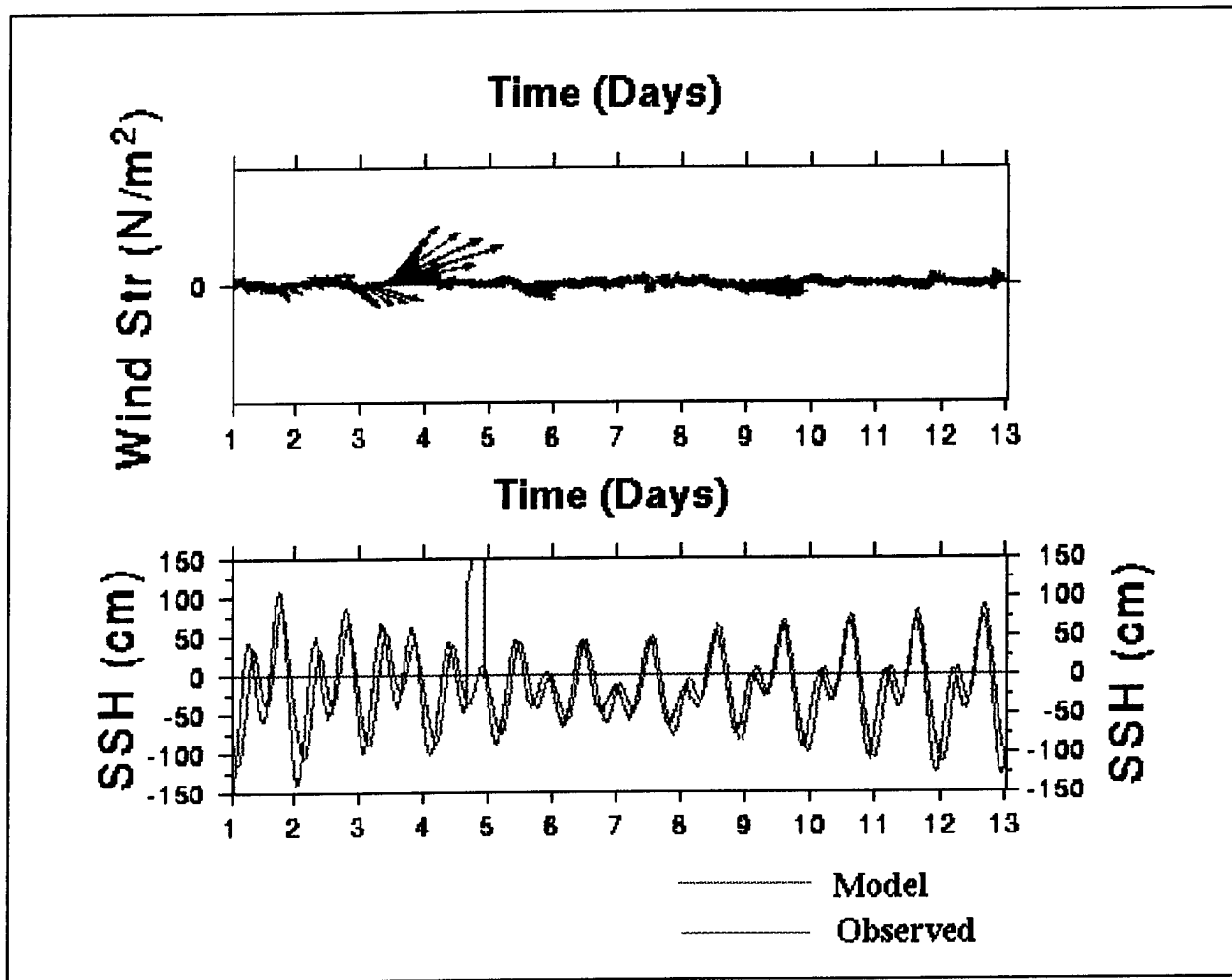


Figure 8: Comparison of Sea Surface Elevations in San Diego Bay

The main CAST objective is to provide a user-friendly, interactive GUI for an end-to-end implementation of the model including the modular functionalities discussed below. Their implementation is achieved using the Extensible Distributed Graphical Environment (EDGE) concept under development at CAST. With the current emphasis on tidal modeling, the available version is tuned to CURReNTSS. This section provides a brief description of these capabilities.

Grid Generation: The GUI produces a world map for selecting the region to be modeled. The user specifies a uniform grid spacing and two diagonal points on the model domain boundary, and the GUI automatically generates the "rectangular" grid (actually, grid lengths $\delta X = \delta Y$ are specified in degrees, and only for small domains is the grid approximately rectangular). Similarly, the nested grid is embedded in the coarse domain. The GUI automatically creates four files needed for model initialization: (1) (Longitude, Latitude) for each grid point in the coarse grid; (2) (Longitude, Latitude) for each grid point in the fine grid; (3) interpolated bathymetry for the coarse grid; and (4) interpolated bathymetry for the fine grid.

In addition, the GUI creates a file of tidal constituents from tide gauge stations located in the model domain, extracted from the IHO database (1979) supplemented with data from the Admiralty charts (1993). Data for each tidal constituent from the selected stations are assimilated during the model integration.

Pre-Processing: This module provides an interactive capability to edit the bathymetry and the IHO station files. The bathymetry editing capability allows one to open or close channels or change depths according to the information available at the time of model execution. Similarly, editing of the IHO station files provides the capability to de-select stations (for data assimilation), if so required, or to move them spatially (essentially altering their locations).

Model Packaging: This step is transparent to the user and interaction at this stage is not needed. The model packaging module readies data files for porting them to a remote host machine. This involves converting files to netCDF followed by tarring of all source code files and essential data files necessary for successful model execution.

Remote Execution: This module first offers the user an opportunity to modify any of the input parameters, e.g., bottom roughness, model integration

time-step, etc. After entering the URL address of the remote machine, the model package is ported to the remote machine. The files are automatically un-tarred, the source code compiled, and submitted to the machine for execution. After the execution is complete, the saved output files are automatically tarred and imported back to the local machine for post-processing, and the user receives the message of run completion displayed on the local machine.

Post-Processing: This module provides the capability of preparing graphics from the saved model output. These include time-series plots at selected locations of: vertically integrated velocity components U , V , and speed and sea surface height; snapshots of tidal current vectors with overlying contours of sea surface height which can be used for preparing animations of model results; tables for tidal events for a specified duration; and co-tidal and co-phase plots for all tidal constituents.

5. CONCLUSIONS

CURReNTSS has been successfully relocated and its results (tidal currents and sea levels) validated in varied regions around the globe. This has been facilitated by embedding the model in a user-friendly interactive GUI that automates all the tedious and complex tasks involved in setting up of the model, executing it successfully and then post-processing the results. The model predictions match well with the limited observational data available in the selected regions. The tidal currents are predicted within a reasonable accuracy, given the restrictions under which the comparisons were conducted. For more accurate tidal current predictions, a fully 3-D baroclinic/barotropic model would be necessary. A 3-D version of the CURReNTSS model is already under development at CU and CAST.

The newly enhanced next generation GUI is based on the EDGE architecture which can be ported and executed on different platforms much more efficiently. Unlike its predecessors, the current GUI architecture is also independent of proprietary third-party software, which further enhances the ease of its distribution and transition capability.

CAST is currently funded by ONR in FY98 to implement a 3-D version of the CURReNTSS tidal model in the RME framework. New functionalities will be added to the current GUI to provide vertical (sigma layers) dependence in the datasets for both pre- and post-processing modules. Additional features may also be added to provide further flexibility to the end-user.

A comprehensive RME with a user-friendly GUI will be a valuable tool for Navy modelers. It will facilitate the initial set up as well as the migration of numerical models to different regions of the world with relative ease. The long-term goal for this effort is to integrate all related numerical models, oceanographic and atmospheric (tides, waves, surf, circulation, thermal, and atmospheric forcing) that are regional or local in scale, into the RME GUI. This will not only improve utility but significantly reduce the learning curve for operational users.

ACKNOWLEDGEMENTS

The contributions by Drs. Robert Carter (NAVOCEANO) and Scott Dinnel (NAVOCEANO) are gratefully acknowledged. We have also benefitted greatly from guidance by Dr. Martha Head (NAVOCEANO), Mr. James Corbin (CAST), and Dr. Lanny Yeske (CAST).

REFERENCES

Mehra, A., V. Anantharaj, S. W. Payne and L. H. Kantha, "A Real Time Demonstration of Producing Tidal Heights and Currents for Naval Operational Use: A Case Study for West Coast of Africa", *MSU CAST Technical Report 96-2*, 24 March 1996, 50 pp.

Moody, J. A., B. Butman, R. C. Beardsley, W. S. Brown, P. Daifuku, J. D. Irish, D. A. Mayer, H. O. Mofjeld, B. Petrie, S. Ramp, P. Smith and W. R. Wright, "Atlas of Tidal Elevation and Current Observations on the Northeast American Continental Shelf and Slope", *U.S.G.S Bulletin 1611*, 1984.

Hydrographer of the Navy, 1993. *Admiralty Tide Tables*, Vol. 1-3, Her Majesty's Stationary Office, London.

International Hydrographic Organization, 1979. *Tidal Constituent Bank*. Station Catalogue, Ocean and Aquatic Sciences, Dept. of Fisheries and Oceans, Ottawa.

DISTRIBUTION LIST

1. Scientific Officer
Office of Naval Research
800 N. Quincy Street
Arlington, VA 22217-5000
- Dr. Tom Curtin
- Dr. Emanuel Fiadeiro
2. Administrative Grants Officer
Office of Naval Research Resident
Representative
101 Marietta Tower-Suite 2805
101 Marietta Street
Atlanta, GA 30303
3. Director
Naval Research Laboratory
Attention: Code 2627
Washington, DC 20375
4. Defense Technical Information
Center
8725 John Kingman Road
STE 0944
Fort Belvoir, VA 22060-6218
5. Oceanographer of the Navy
U.S. Naval Observatory
34th and Massachusetts
Washington, DC 20392
6. Technical Director
Naval Research Laboratory
Stennis Space Center, MS 39529
7. Naval Oceanographic Office
Stennis Space Center, MS 39529
- Technical Director
- Dr. Martha Head
- Dr. William Jobst
- Dr. Charles Horton
- CDR David Titley
- Dr. Robert Carter
- Dr. Scott Dinnell
8. Commanding Officer
Fleet Numerical Oceanography
Center
Monterey, CA 93943-5000
9. Technical Director
Naval Oceanography Command
Building 1020
Stennis Space Center, MS 39529

REPORT DOCUMENTATION PAGE

Form Approved
OMB No. 0704-0188

Public reporting burden for this collection of information is estimated to average 1 hour per response, including the time for reviewing instructions, searching existing data sources, gathering and maintaining the data needed, and completing and reviewing the collection of information. Send comments regarding this burden estimate or any other aspect of this collection of information, including suggestions for reducing this burden, to Washington Headquarters Services, Directorate for Information Operations and Reports, 1215 Jefferson Davis Highway, Suite 1204, Arlington, VA 22202-4302, and to the Office of Management and Budget, Paperwork Reduction Project (0704-0188), Washington, DC 20503.

1. Agency Use Only (Leave blank).		2. Report Date. 20 May 1998	3. Report Type and Dates Covered. TECHNICAL REPORT	
4. Title and Subtitle. BAROTROPIC TIDAL PREDICTIONS AND VALIDATION IN A RELOCATABLE MODELING ENVIRONMENT			5. Funding Numbers. Program Element No. Project No. Task No. Accession No.	
6. Author(s). Avichal Mehra, Ranjit Passi, Lakshmi Kantha, Steven Payne, and Shuvobroto Brahmachari			8. Performing Organization Report Number. CAST Technical Report 1-98 (Revised)	
7. Performing Organization Name(s) and Address(es). Mississippi State University Center for Air Sea Technology Stennis Space Center, MS 39529-6000			10. Sponsoring/Monitoring Agency Report Number. Report 1-98 (Revised)	
9. Sponsoring/Monitoring Agency Name(s) and Address(es). Office of Naval Research 800 North Quincy Street Arlington, VA 22217-5000 Naval Oceanographic Office Stennis Space Center, MS 39529			11. Supplementary Notes. This effort was supported under Office of Naval Research Grant No. N00014-95-1-203 and Naval Oceanographic Office under NASA Contract NAS13-564 / Delivery Order 125	
12a. Distribution/Availability Statement. Approved for public release; distribution is unlimited			12b. Distribution Code.	
13. Abstract (Maximum 200 words). Under funding from the Office of Naval Research (ONR), the Mississippi State University Center for Air Sea Technology (CAST) has been working on developing a Relocatable Modeling Environment (RME) to provide a uniform and unbiased infrastructure for efficiently configuring numerical models in any geographic/oceanic region. Under Naval Oceanographic Office (NAVOCEANO) funding, the model was implemented and tested for NAVOCEANO use. With our current emphasis on ocean tidal modeling, CAST has adopted the Colorado University's numerical ocean model, known as CURReNTSS (Colorado University Rapidly Relocatable Nestable Storm Surge) Model, as the model of choice. During the RME development process, CURReNTSS has been relocated to several coastal oceanic regions, providing excellent results that demonstrate its veracity. This report documents the model validation results and provides a brief description of the Graphic user Interface (GUI).				
14. Subject Terms. (U) CAST (U) CURRENTS (U) RME (U) MODELING (U) RELOCATABLE (U) TIDAL (U) MODELING			15. Number of Pages. 24	
17. Security Classification of Report UNCLASSIFIED			16. Price Code.	
18. Security Classification of This Page UNCLASSIFIED		19. Security Classification of Abstract UNCLASSIFIED		20. Limitation of Abstract.