

286237

JPRS 84110

12 August 1983

China Report

PLANT AND INSTALLATION DATA

No. 45

DIC QUALITY INSPECTED 4

19980707 247

FBIS

FOREIGN BROADCAST INFORMATION SERVICE

REPRODUCED BY
NATIONAL TECHNICAL
INFORMATION SERVICE
U.S. DEPARTMENT OF COMMERCE
SPRINGFIELD, VA. 22161

5
41
A03

NOTE

JPRS publications contain information primarily from foreign newspapers, periodicals and books, but also from news agency transmissions and broadcasts. Materials from foreign-language sources are translated; those from English-language sources are transcribed or reprinted, with the original phrasing and other characteristics retained.

Headlines, editorial reports, and material enclosed in brackets [] are supplied by JPRS. Processing indicators such as [Text] or [Excerpt] in the first line of each item, or following the last line of a brief, indicate how the original information was processed. Where no processing indicator is given, the information was summarized or extracted.

Unfamiliar names rendered phonetically or transliterated are enclosed in parentheses. Words or names preceded by a question mark and enclosed in parentheses were not clear in the original but have been supplied as appropriate in context. Other unattributed parenthetical notes within the body of an item originate with the source. Times within items are as given by source.

The contents of this publication in no way represent the policies, views or attitudes of the U.S. Government.

PROCUREMENT OF PUBLICATIONS

JPRS publications may be ordered from the National Technical Information Service, Springfield, Virginia 22161. In ordering, it is recommended that the JPRS number, title, date and author, if applicable, of publication be cited.

Current JPRS publications are announced in Government Reports Announcements issued semi-monthly by the National Technical Information Service, and are listed in the Monthly Catalog of U.S. Government Publications issued by the Superintendent of Documents, U.S. Government Printing Office, Washington, D.C. 20402.

Correspondence pertaining to matters other than procurement may be addressed to Joint Publications Research Service, 1000 North Glebe Road, Arlington, Virginia 22201.

JPRS REPORTS

Japan Report
 Korean Affairs Report
 Southeast Asia Report
 Mongolia Report

Near East/South Asia Report
 Sub-Saharan Africa Report
 West Europe Report
 West Europe Report: Science and Technology
 Latin America Report

USSR

Political and Sociological Affairs
 Problems of the Far East
 Science and Technology Policy
 Sociological Studies
 Translations from KOMMUNIST
 USA: Economics, Politics, Ideology
 World Economy and International Relations
 Agriculture
 Construction and Related Industries
 Consumer Goods and Domestic Trade
 Economic Affairs
 Energy
 Human Resources
 International Economic Relations
 Transportation

Physics and Mathematics
 Space
 Space Biology and Aerospace Medicine
 Military Affairs
 Chemistry
 Cybernetics, Computers and Automation Technology
 Earth Sciences
 Electronics and Electrical Engineering
 Engineering and Equipment
 Machine Tools and Metal-Working Equipment
 Life Sciences: Biomedical and Behavioral Sciences
 Life Sciences: Effects of Nonionizing Electromagnetic
 Radiation
 Materials Science and Metallurgy
 Meteorology and Hydrology

EASTERN EUROPE

Political, Sociological and Military Affairs
 Scientific Affairs

Economic and Industrial Affairs

CHINA

Political, Sociological and Military Affairs
 Economic Affairs
 Science and Technology

RED FLAG
 Agriculture
 Plant and Installation Data

WORLDWIDE

Telecommunications Policy, Research and
 Development
 Nuclear Development and Proliferation

Environmental Quality
 Epidemiology

FBIS DAILY REPORT

China
 Soviet Union
 South Asia
 Asia and Pacific

Eastern Europe
 Western Europe
 Latin America
 Middle East and Africa

To order, see inside front cover

CHINA REPORT
PLANT AND INSTALLATION DATA

No. 45

CONTENTS

I. Metallurgical Industry.....	1
II. Transportation Equipment Industry.....	5
III. Electronic and Precision Equipment Industries.....	7
IV. Chemical Industry.....	8
V. Fuel and Power Industries.....	10
VI. Machine-Building Industry.....	13
VII. Agricultural Machinery Industry.....	15
VIII. Miscellaneous Industries.....	16
IX. Photographs of Industrial Facilities.....	21

I. METALLURGICAL INDUSTRY

Item: Xinjiang Production and Construction Corps Iron and Steel Mill
[2450 3068 3932 3934 1696 6080 0365 0957 6921 6993 0617]

Location: Urumqi, Xinjiang, PRC

Data: With the help of a technical team from the Xinhua Iron and Steel Mill in Shanghai, this mill recently successfully rolled for the first time two kinds of new-type rolled steel, setting the conditions for the mass production of steel windows in the region. The Shanghai team of one section technical chief and six technicians arrived in March this year to help this mill in renovating its outdated equipment and training its workers. After more than 1 month of efforts, they finally rolled out two new varieties of rolled steel.

Source: Shanghai JIEFANG RIBAO in Chinese 18 May 83 p 1

Item: Jishan Xian Iron Mill
[4469 1472 4905 6993 0617]

Location: Jishan County, Shanxi, PRC

Data: After having switched to the production of slag sulfate white cement, this mill has increased its 1982 output to 7,000 tons and made a profit of more than 150,000 yuan. It has won praise from customers in 21 provinces, autonomous regions, and municipalities for its fine product quality, and over 20 enterprises have asked the mill to pass on its successful experience and production techniques.

Source: Tianjin JISHU SHICHANG in Chinese 30 Jun 83 p 1

Item: Guangzhou Aluminum Alloy Shaped Materials Plant
[1684 1558 6986 0678 6855 0992 2624 0455 0756 0617]

Location: Guangzhou, Guangdong, PRC

Data: Using imported new technical equipment, this plant has built a production line that casts and extrudes shaped materials, treats surfaces, and packs finished products, thus making it one of the larger enterprises turning out aluminum alloy shaped materials in the country's light industrial system. Its 1982 output registered an increase of 2.3 times over that of 1980. Its first quarter 1983 output showed a 43.8-percent rise over the same 1982 period. It is now producing 246 product varieties. This enterprise has signed a number of compensation trade agreements with Hong Kong business firms. As of April 1983, it has placed 1,500 tons of aluminum alloy shaped materials for sale in the markets of Hong Kong and Macao.

Source: Guangzhou NANFANG RIBAO in Chinese 22 May 83 p 2

Item: Maanshan Iron and Steel Company
[7456 7254 1472 692k [as printed] 6993 0361 0674]

Location: Maanshan, Anhui, PRC

Data: During the first 5 months of 1983, this company shipped 1,500 tons of rolled steel to support the Ningguo Cement Plant project, one of three major cement plants under construction in the country. At the request of the departments concerned, the company delivered 500 additional tons of rolled steel to the cement plant project in June, thereby making timely contributions to one of the nation's key construction projects.

Source: Beijing GONGREN RIBAO in Chinese 16 Jun 83 p 2]

Item: Daye Steel Mill
[2192 0396 6921 0617]

Location: Wuhan, Hubei, PRC

Data: In cooperation with the Huazhong Engineering Institute, this mill has produced a new steel variety--65 niobium cold pressed mold steel--which after proper heat treatment, shows excellent mechanical performance. In 1980 the Hangzhou Chain Plant employed this steel variety in link plate die, thus increasing the die service life by 6 times, lowering the production cost by 34 percent, and effecting a savings of 200,000 yuan a year. Subsequently the Hangzhou Scientific Commission organized the units concerned to promote the applications of 65 niobium cold pressed mold steel and achieved excellent results. Training classes have been organized to popularize the use of this specialty steel.

Source: Tianjin JISHU SHICHANG in Chinese 20 Jun 83 p 1

Item: Anshan Iron and Steel Company
[7254 1472 6921 6993 0361 0674]

Location: Anshan, Liaoning, PRC

Data: This company's No 3 Steel Mill has successfully employed the new top and bottom blown smelting technique on its No 1 Converter at noon on 16 June. The new technique not only shortens the smelting time and lowers oxygen consumption, but also makes it possible to increase the steel variety and improve the quality of steel. This project was successfully completed in only 34 days and nights.

Source: Shenyang LIAONING RIBAO in Chinese 17 Jun 83 p.2

Item: Lingyuan Iron and Steel Mill
[0407 3293 6921 6993 0617]

Location: Lingyuan County, Liaoning, PRC

Data: This mill's hot rolled band steel workshop, one of three major technical renovation projects of Liaoning's metallurgical system undertaken in 1982, was officially put into operation on 5 May following 9 months of intensive work. The renovated workshop has raised its production capacity by 2.6 times, turning out 80,000 metric tons of band steel annually. It can create a value of 40 million yuan and realize a profit of 2.6 million yuan, making it possible to recover the amount of money invested in the project in just 1 year.

Source: Shenyang LIAONING RIBAO in Chinese 9 May 83 p 1

Item: Shanxi Aluminum Plant
[1472 6007 0712 0617]

Location: Yumenkou, southwestern Shanxi, PRC

Data: Construction of China's largest aluminum plant began 1 July here, provincial authorities said. The plant will be built in three stages. The first stage, designed to produce 200,000 tons of aluminum oxide a year, is expected to be completed by 1986. When the whole project is completed by the year 2000, it will eventually produce 1.5 million tons of aluminum oxide annually, or one-third of China's planned target for this product for the end of the century, the officials said. Shanxi Province, China's leading coal producer, also has a large bauxite reserve of more than 300 million tons, one-third of the nation's total, providing sufficient ore for the province's aluminum industry.

Source: Beijing XINHUA in English 1430 GMT 1 Jul 83 OW

II. TRANSPORTATION EQUIPMENT INDUSTRY

Item: Guangzhou Shipyard
[1684 1558 6644 5307 0617]

Location: Guangzhou, Guangdong, PRC

Data: SS "Malan," presently the largest Chinese built freighter on the South China Coast Line, was launched on 26 June 1983. Built by this shipyard for the Guangzhou Ocean Shipping Bureau, the vessel has a displacement of 3,300 tons, measures 107 meters in length and 15 meters in width, and has a speed of 15.7 nautical miles per hour. The eight-storied ship carries 600 passengers and 260 tons of cargo.

Source: Guangzhou GUANGZHOU RIBAO in Chinese 27 Jun 83 p 1

Item: Guangxi Zhuang Autonomous Region Motor Transport Company
[1648 6007 1104 2469 5261 3112 0575 3086 6508 6663 6551 0361 0674]

Location: Guangxi AR, PRC

Data: This company has launched a drive to refit 4,100 older model buses and trucks with high fuel consumption. As of the end of April this year, it has refitted 3,100 vehicles. Each of the refitted motor cars can cut fuel consumption by 5 percent.

Source: Shanghai JIEFANG RIBAO in Chinese 3 Jun 83 p 3

Item: Changchun Motor Vehicle Plant No 1
[7022 2504 4574 0001 3086 6508 0617]

Location: Changchun, Jilin, PRC

Data: Since its founding over the past 30 years, this plant has been devoted to conducting technological innovations and transformations. There have been substantial increases in the output of cars and quality continues to improve. By the end of this June, the factory had produced 1.2 million cars of various models and delivered 5.1 billion yuan of tax and profits to the state, equivalent to 8.5 times the investment.

Source: Changchun Jilin Provincial Service in Mandarin 1030 GMT 12 Jul 83 SK

III. ELECTRONIC AND PRECISION EQUIPMENT INDUSTRIES

Item: Liaoning Wire Communications Equipment Plant No 1
[6697 1337 2589 4848 7193 0001 0617]

Location: Shenyang, Liaoning, PRC

Data: In one year's time, technical personnel of this plant have trial manufactured 13 new product varieties, seven of which are filling the product gap in the country. Twelve additional new products are being studied and manufactured here. All these have permitted this plant to realize a profit of 370,000 yuan instead of incurring a loss of 1 million yuan. Employing 60 assistant engineers or technicians of higher levels, this enterprise principally produces explosive-proof communications products. In efforts to improve their product quality, technical personnel have gone to the coal mines and oilfields to investigate the actual needs for their products.

Source: Shenyang LIAONING RIBAO in Chinese 7 Jun 83 p 3

Item: Beijing Television Equipment Plant
[0554 0079 7193 6018 6080 0271 0617]

Location: Beijing, PRC

Data: At the request of the sintering plant of the Capital Iron and Steel Company, the No 2 Design Office of this plant installed three industrial television sets at the end of the sintering machine of the No 2 Sintering Workshop to make on-the-spot observations of dust, thus freeing the steel workers from this hazardous task.

Source: Beijing GONGREN RIBAO in Chinese 30 Apr 83 p 1

IV. CHEMICAL INDUSTRY

Item: Yunfu Iron Sulfide Mine
[0061 3189 4288 6993 4349]

Location: Zhaoqing Prefecture along the lower reaches of Zhujiang and Xijiang Rivers in Guangdong Province, PRC

Data: [1] When completed, this mine, China's largest iron sulfide mine, will produce annually 2.4 million tons of standard iron sulfide, sufficient for the production of 2.4 million tons of sulfuric acid and 4.8 million tons of phosphate fertilizer, accounting for 38 percent, 30 percent, and 34 percent of the nation's total output respectively. During the construction of this mine, the problems of land acquisition and local employment were serious. With the approval of the Guangdong Provincial Party Committee, this mine set up a people's commune in the mining zone in 1978, and it was changed to the township of Gaofeng in 1981. The Yunfu County Party Committee and this mine assumed dual leadership over the township, with emphasis on the mine. A joint agricultural, industrial, and commercial company was established. It is charged with the task of organizing agricultural, forestry, animal husbandry, fishery, and sideline production, as well as industrial and business developments, thereby solving the local land acquisition and employment problems. From 1978 to the

[Continued on Card 2]

[Continued from Card 1]

Item: Yunfu Iron Sulfide Mine
[0061 3189 4288 6993 4349]

Location: Zhaoqing Prefecture along the lower reaches of Zhujiang and Xijiang Rivers in Guangdong Province, PRC

Data: present construction work on 23 of 25 single-item projects of the mine has begun. Ten of these projects have either been completed or are near completion.

[2] Construction of this mine, one of the largest construction projects in the country, is in full swing. With an annual output capacity of 3 million metric tons, this chemical mine is divided into two extraction zones--north and south. The thickest seam of the ore bed is 170 meters. The average iron sulfide content is 37 percent. Open-pit mining operations are feasible here. The mine is only 16.5 kilometers from the Xijiang (West River). Four berths for shipping iron sulfide ores have been built in Liudu Port on the bank of Xijiang River. Ore-shipping vessels can reach Wuzhou and Gui Xian on the upper reaches and Zhaoqing and Guangzhou on the lower reaches of the river.

Source: [1] Beijing RENMIN RIBAO in Chinese 30 May 83 p 1
[2] Shanghai JIEFANG RIBAO in Chinese 3 Jun 83 p 3

Item: China Petrochemical Corporation
[0022 0948 4258 3111 0553 0361 0674]

Location: Beijing, PRC

Data: This corporation, the largest economic entity of the country, will be inaugurated July 11 in Beijing. Chen Jinhua, a leading official of the corporation's preparation group, said today in an interview that the corporation will consist of 39 key enterprises including oil refineries, petrochemical companies and plants and chemical fiber works. Among them are the General Petrochemical Corporations and Plants in Beijing, Daqing, Lanzhou, Liaoyang, and Shanghai. China has produced 100 million tons of crude oil annually for each of the past five years, and now ranks as the sixth largest producer in the world. However, China's utilization of oil and its economic results are not so good, Chen said. He said the new corporation will have a unified leadership, overall planning and management of 13 petrochemical companies and plants, 17 oil refineries, four chemical fiber works, and five chemical works and fertilizer plants in order to achieve optimum utilization and the best possible economic results.

China's petrochemical industry was launched in the late 1950s, and now has an annual capacity of 595,000 tons of ethylene, 400,000 tons of chemical raw material for producing synthetic fiber, 500,000 tons

[Continued on Card 2]

[Continued from Card 1]

Item: China Petrochemical Corporation
[0022 0948 4258 3111 0553 0361 0674]

Location: Beijing, PRC

Data: of plastics, 137,000 tons of synthetic rubber, 2.24 million tons of synthetic ammonia and 3.58 million tons of urea.

After its establishment, Chen Jinhua said, the corporation will strengthen coordination between oil refineries and petrochemical enterprises and accelerate technical transformation to provide more high-quality fuel and new materials.

Source: Beijing XINHUA in English 1136 GMT 1 Jul 83

V. FUEL AND POWER INDUSTRIES.

Item: Lanzhou Oil Refinery
[5695 1558 3550 3111 0617]

Location: Lanzhou, Gansu, PRC

Data: Following 1 year of readjustment and reorganization, this refinery was issued a certificate of acceptance by the higher authorities indicating that it has met the five standards for enterprise readjustment. In the past 3 years, this refinery has paid to the state 1.01 billion yuan in taxes and profits, equivalent to 1.5 times its fixed assets.

Source: Lanzhou GANSU RIBAO in Chinese 17 May 83 p 1

Item: Ankou Coal Mine
[1344 0656 3561 4349]

Location: Huating, Gansu, PRC

Data: Since it instituted an economic responsibility system, this mine, subordinate to the Huating Mining Administrative Bureau, has achieved excellent economic results. During the January-April 1983 period, it has sharply reduced its consumption of shoring timber, cement, and rolled steel, effecting a savings of 160,000 yuan. The production cost per ton of coal was 4.3 percent lower than the planned target and product earnings reached 120,000 yuan, 3.2 times that of the same 1982 period.

Source: Lanzhou GANSU RIBAO in Chinese 17 May 83 p 1

Item: Shenyang Pressure Coal Gas Plant
[3476 7122 0502 1090 3561 3049 0617]

Location: Shenyang, Liaoning, PRC

Data: The cylindrical coal gas storage tank built by this plant is near completion. Inspection of the tank began 16 June. Upon completion, the cylindrical storage tank, measuring 12 meters in diameter and weighing 180 tons, can hold 16,000 cubic meters of coal gas. This plant will build seven more storage tanks of the same size for Shenyang City.

Source: Shenyang LIAONING RIBAO in Chinese 17 Jun 83 p 2

Item: Shijiazhuang Oil Refinery
[4258 1367 8369 3550 3111 0617]

Location: Shijiazhuang, Hebei, PRC

Data: The first set of combined facilities at this refinery was officially put into operation recently. On 2 April this year up-to-standard No 2 lamp kerosene, directly distilled gasoline, light diesel oil, and paraffin oil were produced. This refinery has an original annual design processing capacity of 3.5 million tons. It is now striving to realize its 1983 plan of trial producing 500,000 tons of crude oil.

Source: Shijiazhuang HEBEI RIBAO in Chinese 7 Apr 83 p 1

Item: Fengfeng Mining Administrative Bureau
[1496 1496 4349 0523 1444]

Location: Hebei, PRC

Data: After having fulfilled the state plan for the first quarter 3 days ahead of schedule this year, miners under this bureau produced 124,600 tons of coal above the norm and prefulfilled by 12 days and overfulfilled by 1,300 meters its exploitation plan. All 13 mines under this bureau reported higher output.

Source: Shijiazhuang HEBEI RIBAO in Chinese 7 Apr 83 p 1

Item: Kailuan Mining Administration
[7030 3497 4349 0523 1444]

Location: Kailuan, Hebei, PRC

Data: China's largest coal washing plant, designed to process 4 million tons of coal a year, started trial operation last week in Kailuan, a major coal producer in Hefei Province. Construction of the first stage project of the plant--located in the Fangezhuang Coal Mine--includes a 35-meter-high coal washing workshop, a belt conveyor, a warehouse and a special railway feeder, according to this mining administration. The coal washing workshop uses machinery and electric equipment imported from the Federal Republic of Germany, with computer-controlled production processes, the administration said. A drying workshop is to be built in the second stage of construction started in late April this year. The project is scheduled for completion in October 1984, the administration said. The Fangezhuang Coal Mine now produces 3 million tons annually. Washed coal is supplied to large iron and steel works and power plants in China, and some for export. This administration now has six washing plants and plans to build another large one in 1984. When completed, these plants will be able to process all of the administration's coal, 20 million tons a year.

Source: Beijing XINHUA in English 1122 GMT 4 Jul 83 OW

VI. MACHINE-BUILDING INDUSTRY

Item: Guangzhou Diesel Engine Plant
[1684 1558 2693 3111 2623 0617]

Location: Guangzhou, Guangdong, PRC

Data: A type of diesel generating unit for emergency use has been built by this plant. When outside power source is cut off, this generator can automatically start supplying power within 10 seconds, and when supply of outside power source is resumed, the 250-500 KW generating unit can automatically discharge and cease operation. The emergency diesel generating unit is especially designed for use by large firms, restaurants, hotels, and other high-rise buildings. A number of business firms in Hong Kong and units in Guangdong Province have signed contracts for the purchase of this type of generators.

Source: Guangzhou GUANGZHOU RIBAO in Chinese 11 May 83 p 1

Item: Tianshui City Casting Machinery Plant
[1131 3055 1579 6999 6644 2623 2750 0617]

Location: Tianshui, Gansu, PRC

Data: This small-scale city-run plant has increased its output value 25 percent by putting on the market and promoting its "pillar product," J514 horizontal self-dumping centrifugal casting machine. By April this year, this product has earned for the plant 100,000 yuan in profit. Employing 200 employees and workers and only three technicians, the plant primarily manufactures centrifuges. In cooperation with the Jinan Casting and Forging Research Institute, this small-sized enterprise has accepted the assignment to research and manufacture "low pressure casting machine" and "S1120 tumbling-type sand mixer," which are key 1983 S/T projects for the machine-building industry.

Source: Lanzhou GANSU RIBAO in Chinese 7 Jun 83 p 2

Item: (Jianchang) Machinery Plant
[(1696 2490) 2623 2750 0617]

Location: Hubei Province, PRC

Data: The multi-purpose pattern generator, a crucial equipment in the fabrication of large-scale integrated circuits, has been jointly developed by this plant of the Ministry of Electronic Industry as well as the Automation Institute, the Semiconductor Institute and the Changchun Optical Precision Institute under the Chinese Academy of Sciences. This pattern generator can be used for many purposes, with great precision and at high speed. It is very efficient in fabricating integrated circuits and its performance is very stable. Some of its technical requirements are of advanced world standards. It will certainly play an important role in the production of large-scale integrated circuits in China.

Source: Beijing Domestic Service in Mandarin 1600 GMT 16 Jun 83 OW

VII. AGRICULTURAL MACHINERY INDUSTRY

Item: Qingtongxia Xian Agricultural Machinery Repair and Manufacturing Plant
[7230 6894 1499 4905 6593 2623 0208 6644 0617]

Location: Qingtongxia County, Ningxia, PRC

Data: After adopting a piece work above-norm incentive system and a stringent quality inspection system, the workers here have substantially raised their up-to-standard product rate. The up-to-standard rate of their sowing machines manufactured during the January-March 1983 period had reached 98 percent. The plant had sold 1,872 small-scale wheat sowing machines, permitting it to overfulfill its annual profit plan.

Source: Yinchuan NINGXIA RIBAO in Chinese 3 May 83 p 2

Item: Shenyang Tractor Manufacturing Plant
[3088 7122 2151 2139 2623 0455 6644 0617]

Location: Shenyang, Liaoning, PRC

Data: This plant has modified its Dongfeng--28 tractor to suit the needs of the peasants. The modified tractor can now perform urban and rural transportation, as well as operate in the fields. When operating in the fields, the tractor can have four shifts and increase its speed from 2.6 to 7.4 kilometers an hour. When using as transporter, the modified tractor can increase its traveling speed from 10 to 28 kilometers per hour. Seven hundred of the modified tractors have been manufactured and put on sale in the market.

Source: Shenyang LIAONING RIBAO in Chinese 17 Jun 83 p 1

VIII. MISCELLANEOUS INDUSTRIES

Item: Sichuan Vinylon Plant
[0934 1557 4850 1441 4858 0617]

Location: Southwest of Changshou County, Sichuan, PRC

Data: This large chemical fiber complex was officially put into operation on 20 May 1983. Equipped with machinery imported from Japan and France, this complex uses natural gas as raw material and produces annually 42,000 tons of vinylon short fibers, 3,000 tons of (cut) yarn, and 95,000 tons of methyl alcohol. The total investment cost of this project is close to 1 billion yuan. It employs 9,400 employees and workers. The whole complex is divided into four subplants--chemical fiber, chemicals, heat and power, and machinery repair subplants. Since it was put into trial operation at the end of 1979, all the equipment has been operating normally. It boasts an accumulated output value of 300 million yuan and has delivered to the state 100 million yuan in taxes and profits.

Source: Chengdu SICHUAN RIBAO in Chinese 20 May 83 p 1

Item: Qingtongxia Cement Plant
[7230 6894 1499 3055 3136 0617]

Location: Ningxia, PRC

Data: This plant's expansion project has been completed. Trial operations of the new equipment were carried out in early May. The expansion project will permit this plant to increase its annual output capacity by 90,000 tons.

Source: Yinchuan NINGXIA RIBAO in Chinese 17 Jun 83 p 1

Item: Yaohua Glass Company
[5069 5478 0361 0674]

Location: Qinhuangdao, Hebei, PRC

Data: Construction of this company's new plant, a large-sized glass factory, is under way. The new plant's design annual output capacity is 3.5 million standard crates of plate glass, about one-tenth of the nation's output.

Source: Beijing GONGREN RIBAO in Chinese 5 Jul 83 p 1

Item: Yinchuan Sugar Mill
[6892 1557 4743 0617]

Location: Yinchuan, Ningxia, PRC

Data: The 13th sugarcane pressing season of this mill ended on 2 April this year. It produced 14,000 metric tons of sugar, a 1.68 fold increase over the preceding season. In 1982 Ningxia reaped a bumper sugarbeet harvest, and this mill processed 105,000 metric tons of sugarbeets. Compared to the preceding period, its production cost per ton of sugar was 19 percent lower. Its profit for this season was 2.84 million yuan, as compared to 93,000 yuan in the preceding season.

Source: Yinchuan NINGXIA RIBAO in Chinese 27 Apr 83 p 1

Item: PLA Plant No 6620
[6043 2397 7786 0362 0362 7190 0617]

Location: Probably in Chengdu, Sichuan, PRC

Data: On the premise of assuring the fulfillment of defense production quotas, personnel here are busily turning out civilian goods. From 1980 to 1982, this enterprise realized a net profit of 1.2 million yuan, of which profit from civilian goods accounts for 74 percent. Contracts it signed with consumers for civilian products have extended to 1984.

Source: Chengdu SICHUAN RIBAO in Chinese 16 May 83 p 2

Item: Pingluo Sugar Mill
[1627 5012 4743 0617]

Location: Pingluo County, Ningxia, PRC

Data: Construction of this new sugar mill project was officially started on 25 May 1983 after 1 year and 8 months of preparatory work. One of the key construction projects in Ningxia, this mill has a design daily sugar beet processing capacity of 1,000 tons and a daily alcohol output of 12,000 liters. Large numbers of workers and technicians are heading toward the construction site to insure the completion of this project in good time.

Source: Yinchuan NINGXIA RIBAO in Chinese 26 May 83 p 1

Item: Huaxin Cement Plant
[5478 2450 3055 3136 0617]

Location: Hubei Province, PRC

Data: This plant is responsible for assuring the supply of cement to such key projects as the Gezhouba Hydroelectric power station, the Anhui-Jiangxi line, Shanghai Port, Jiangsu's Yizheng Chemical Fiber Plant, and the Beijing-Wuhan-Guangzhou coaxial cable projects. Its share of cement supply to the Gezhouba Hydroelectric Power Station is 220,000 tons of dam cement, accounting for 25 percent of its annual output. By switching the production of slag cement to the production of dam cement, this plant will reduce its income by 800,000 yuan a year. Despite the loss in revenue, the workers are determined to produce quality cement. Early this year, because other cement plants stopped operations due to machinery inspection and repair, officials of the Gezhouba Hydroelectric Power Station project tentatively required this plant to deliver more cement. It transported on a priority basis cement to the key project. During the January-May 1983 period, it surpassed the plan to supply the Gezhouba project with cement by 5,000 tons.

Source: Beijing GONGREN RIBAO in Chinese 16 Jun 83 p 2

Item: Guangzhou Plastic Packing Materials Plant
[1684 1558 1043 2436 0545 5944 2624 2436 0617]

Location: Guangzhou, Guangdong, PRC

Data: Construction of this plant, the largest modernized plastic sheets manufacturing enterprise in the country, has been basically completed. Installation of the polypropylene film sheets production line imported from West Germany was completed by 18 June 1983. Jointly established by the Guangdong Trust Investment Company and the Guangzhou Petrochemical Industry Corporation, and the Guangzhou Petrochemical Plant, the project occupies 12,000 square meters of land and has a design annual polypropylene film sheet output of 6,400 tons and will create an annual output value of 40 million yuan.

Source: Guangzhou GUANGZHOU RIBAO in Chinese 27 Jun 83 p 1

Item: Linjiang Forestry Bureau
[5259 3068 2651 2814 1444]

Location: Hunjiang City, Jilin Province, PRC

Data: Construction has begun on China's biggest particle board mill here. The mill, the biggest timber multipurpose utilization project undertaken by China, will be able to produce 50,000 cubic meters of particle board by using leftovers from felling of trees and processing of timber. It will be operated under this bureau, provincial authorities said.

Source: Beijing XINHUA in English 0247 GMT 15 Jun 83 OW

IX. PHOTOGRAPHS OF INDUSTRIAL FACILITIES

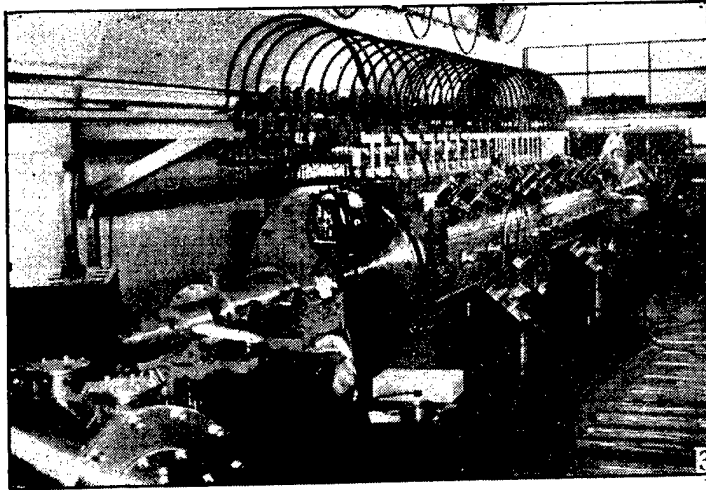


Fig. 1 Photograph of China's first 10MeV proton linear accelerator
[Source: Beijing GAONENG WULI (HIGH ENERGY PHYSICS) in Chinese
No 2, 1983, inside frontcover]



Fig. 2 Construction of the second floating method glass production line for the Luoyang Glass Plant in Henan is under way.
[Source: Beijing ZHONGGUO JIANCAI (CHINA BUILDING MATERIALS) in Chinese No 2, 1983, backcover]

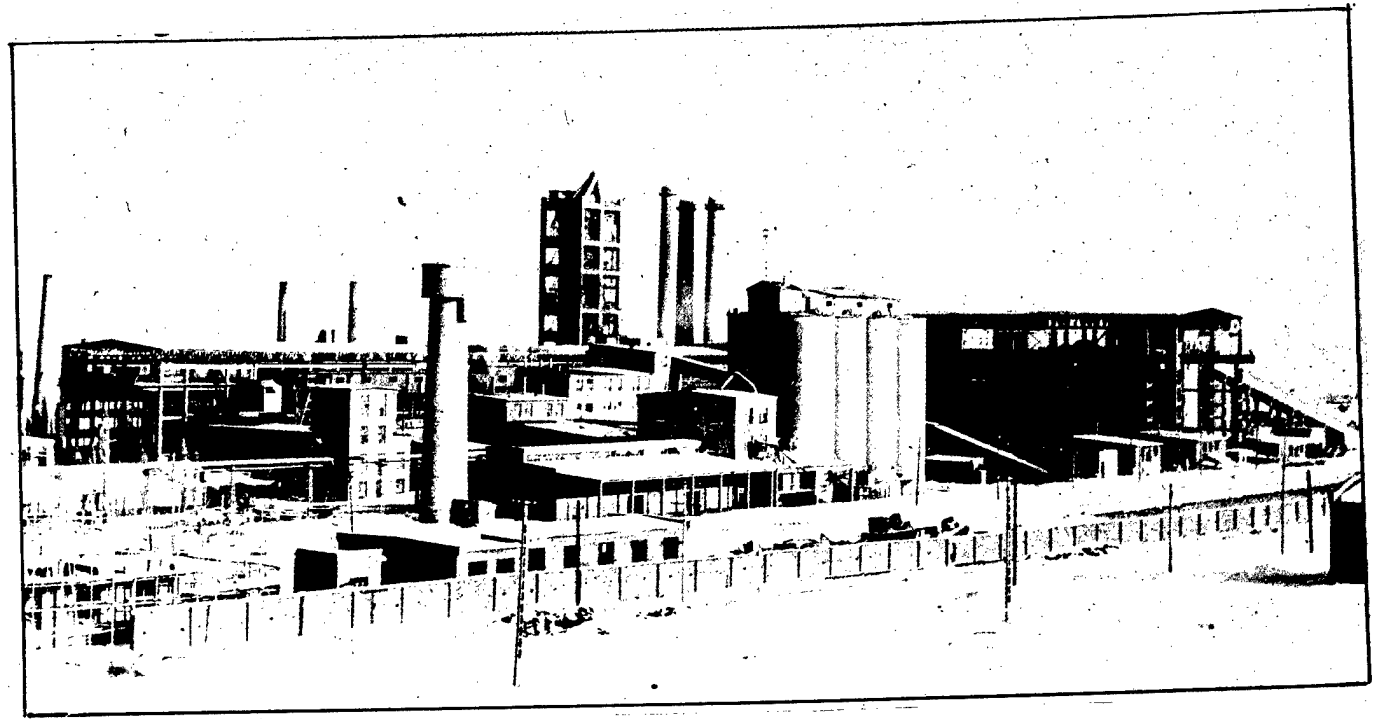


Fig. 3 View of the No 3 kiln of the Xinjiang Cement Plant, which employs the new external disintegration method.
[Source: Beijing ZHONGGUO JIANCAI (CHINA BUILDING MATERIALS) in Chinese No 3, 1983, inside backcover]

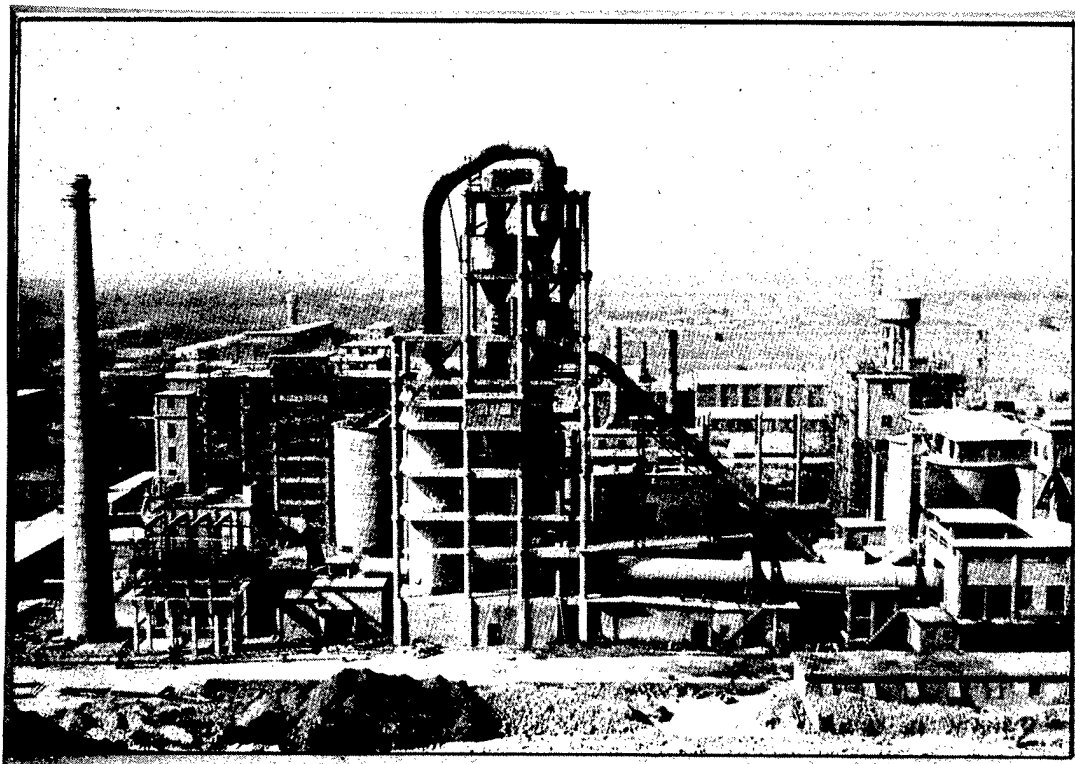


Fig. 4 Photo of the newly built cyclone disintegration kiln of the Peixian Cement Plant in Jiangsu.
[Source: Beijing ZHONGGUO JIANCAI (CHINA BUILDING MATERIALS) in Chinese No 3, 1983, backcover]



Fig. 5 Underground workshop of the Beijing Switch Factory.
[Source: Beijing ZHONGGUO JIANSHE (CHINA RECONSTRUCTS) in English No 4,
1983 p 7]



Fig. 6 A sectional view of the Gaoqiao General Petrochemicals Corporation in
Shanghai.
[Source: Shanghai SHANGHAI HUABAO (SHANGHAI PICTORIAL) in Chinese
No 3, 1983 p 12]

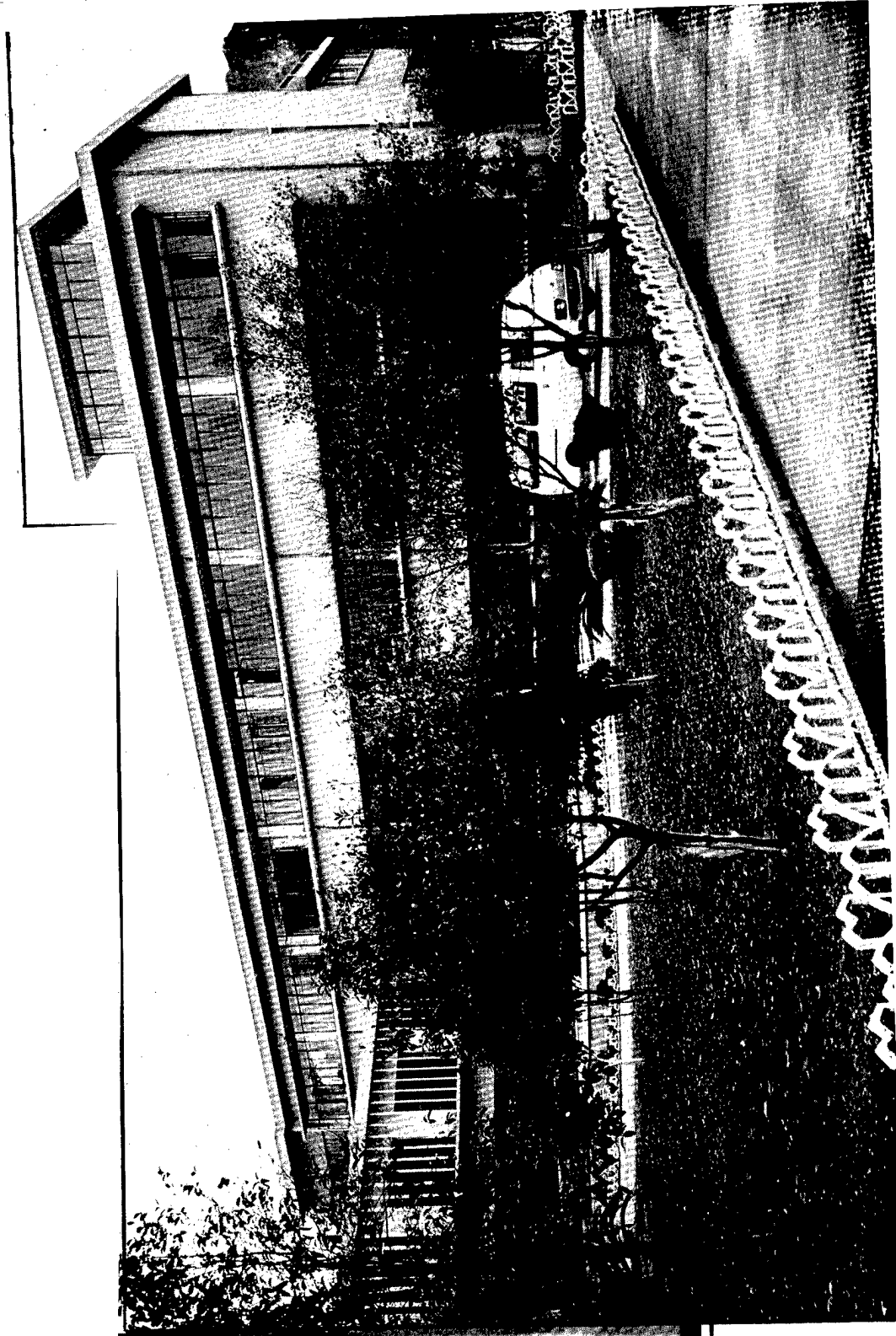


Fig. 7 Photograph of the Guilin Measuring and Cutting Tool Plant in Guangxi
[Source: Beijing ZHONGGUO JIXIE SHEBEI (CHINA MACHINERY AND EQUIPMENT) in English and
Chinese No 1, 1983 p 67]

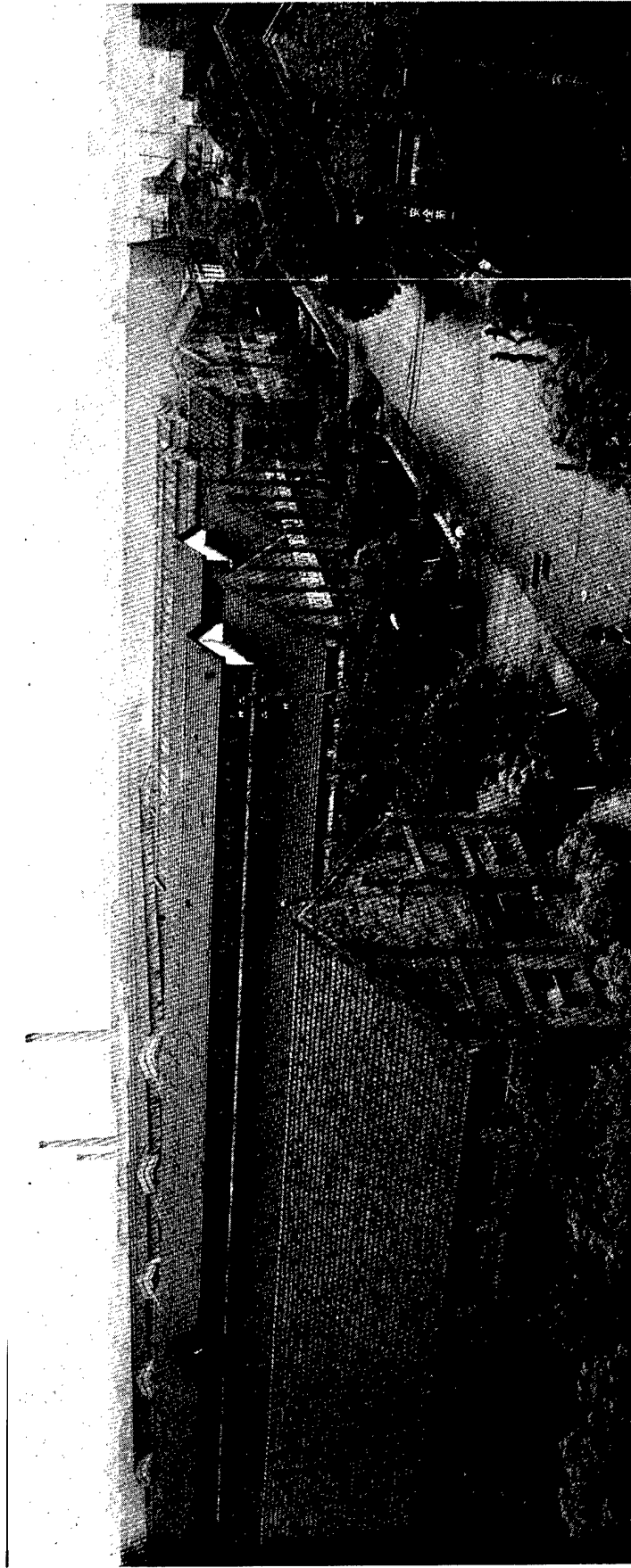


Fig. 8 View of the Nanning Machinery Plant in Guangxi
[Source: Beijing ZHONGGUO JIXIE SHEBEI (CHINA MACHINERY AND EQUIPMENT) in English and Chinese
No 1, 1983 p 84]

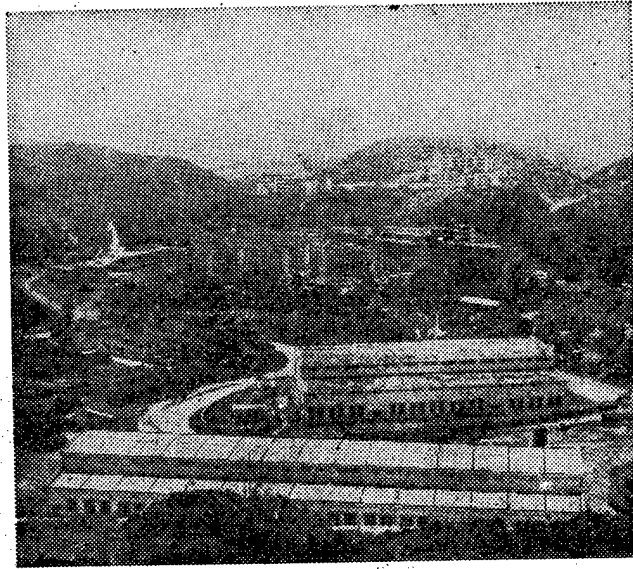


Fig. 9 Photograph of the Yunfu Iron Sulfide Mining Area in Zhaoqing, Guangdong, with its support facilities
[Source: Harbin HEILONGJIANG RIBAO in Chinese 4 Jun 83 p 4]

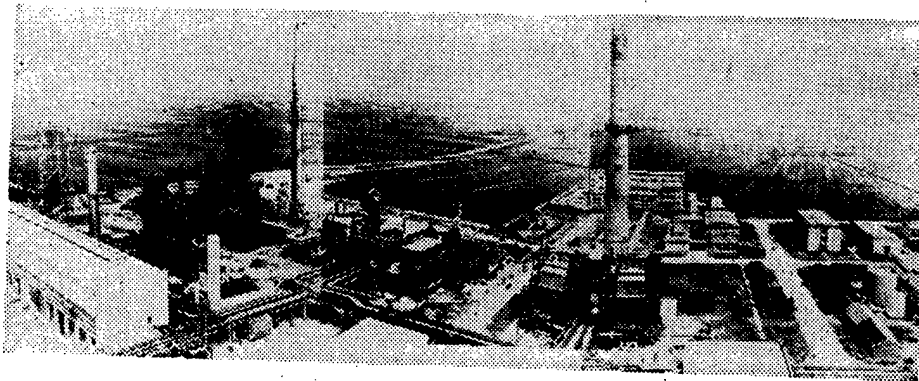


Fig. 10 Full view of the 300,000-ton synthetic ammonia project site of the Zhenhai Petrochemicals Plant in Zhejiang. Trial operation of the imported facility was successful.
[Source: Hangzhou ZHEJIANG RIBAO in Chinese 16 Jun 83 p 1]

建设中的“能源工厂”

——沈北加压煤气工程见闻

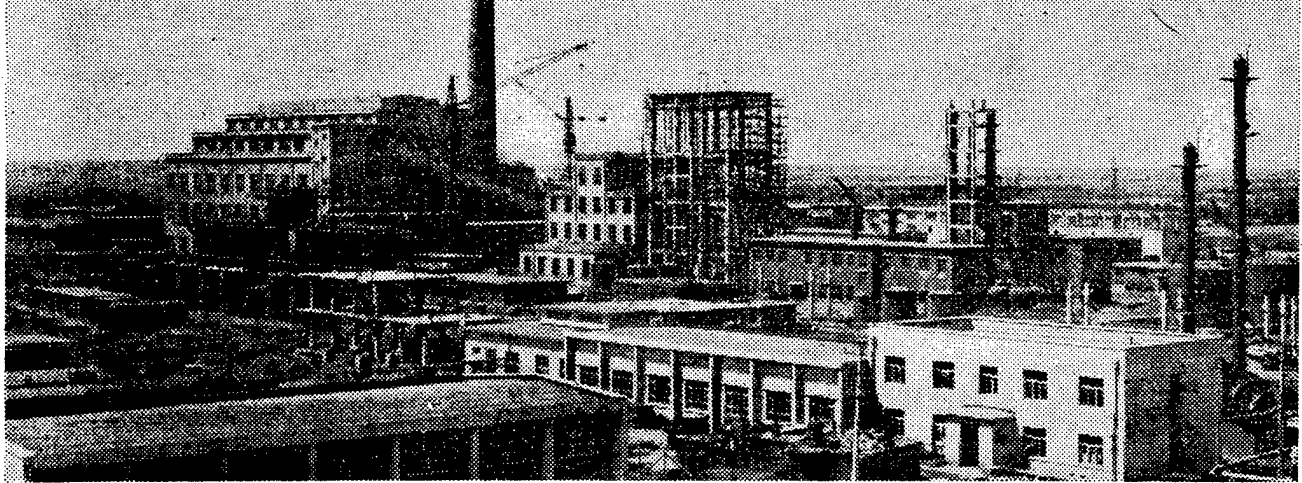


Fig. 11 Photo of the Shenbei Pressure Coal Gasification Plant in the northern suburbs of Shenyang City. Construction of this project is still in progress.

[Source: Shenyang LIAONING RIBAO in Chinese 9 May 83 p 2]

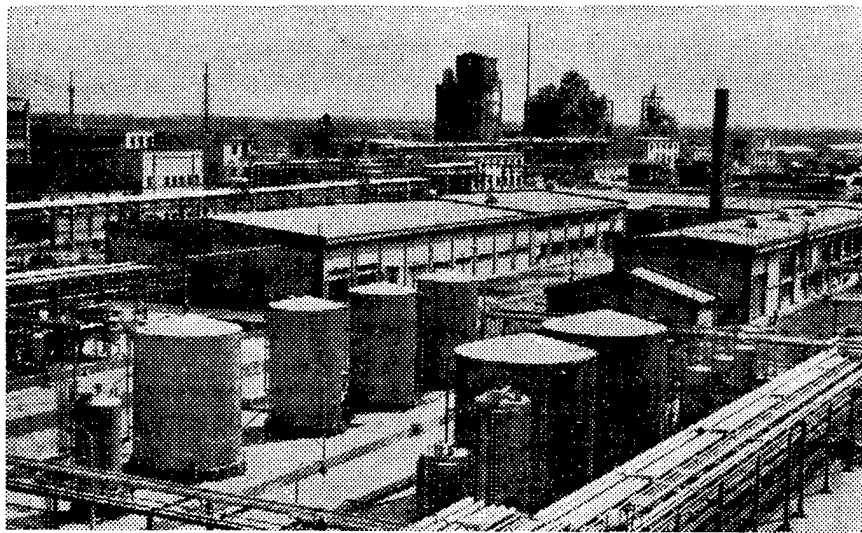


Fig. 12 Construction of the Yantai Synthetic Leather Plant in Shandong has been completed. This is one of 70 key projects in China.

[Source: Shanghai JIEFANG RIBAO in Chinese 23 May 83 p 3]

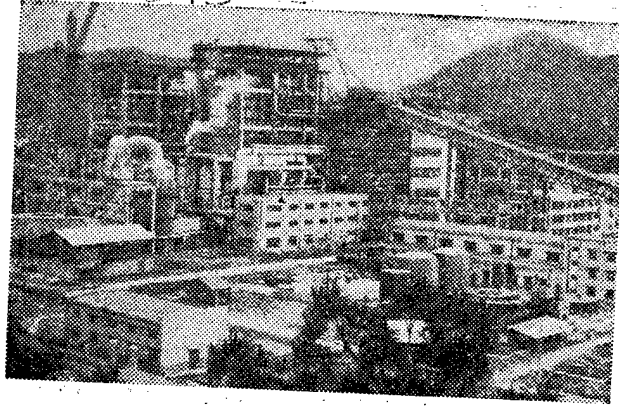


Fig. 13 Construction of the Taizhou Power Plant on the shore of the East China Sea in Zhejiang Province is in full swing. When completed in 1983 as scheduled, this project will be able to generate annually 1.5 billion kilowatt hours of electricity.
[Source: Harbin HEILONGJIANG RIBAO in Chinese 6 Jun 83 p 4]



Fig. 14 Outside view of the Shanghai General Camera Plant in Songjiang, Jiangsu. Currently employing 4,100 employees and workers, this plant expects to turn out 360,000 cameras in 1983, 6,000 more than its designed capacity.
[Source: Shanghai JIEFANG RIBAO in Chinese 4 Jun 83 p 1]



Fig. 15 Electric meter general assembly line of the Yinchuan Electric Meter and Instrument Plant in Ningxia
[Source: Yinchuan NINGXIA HUABAO (NINGXIA PICTORIAL) in Chinese, trial edition 1982]

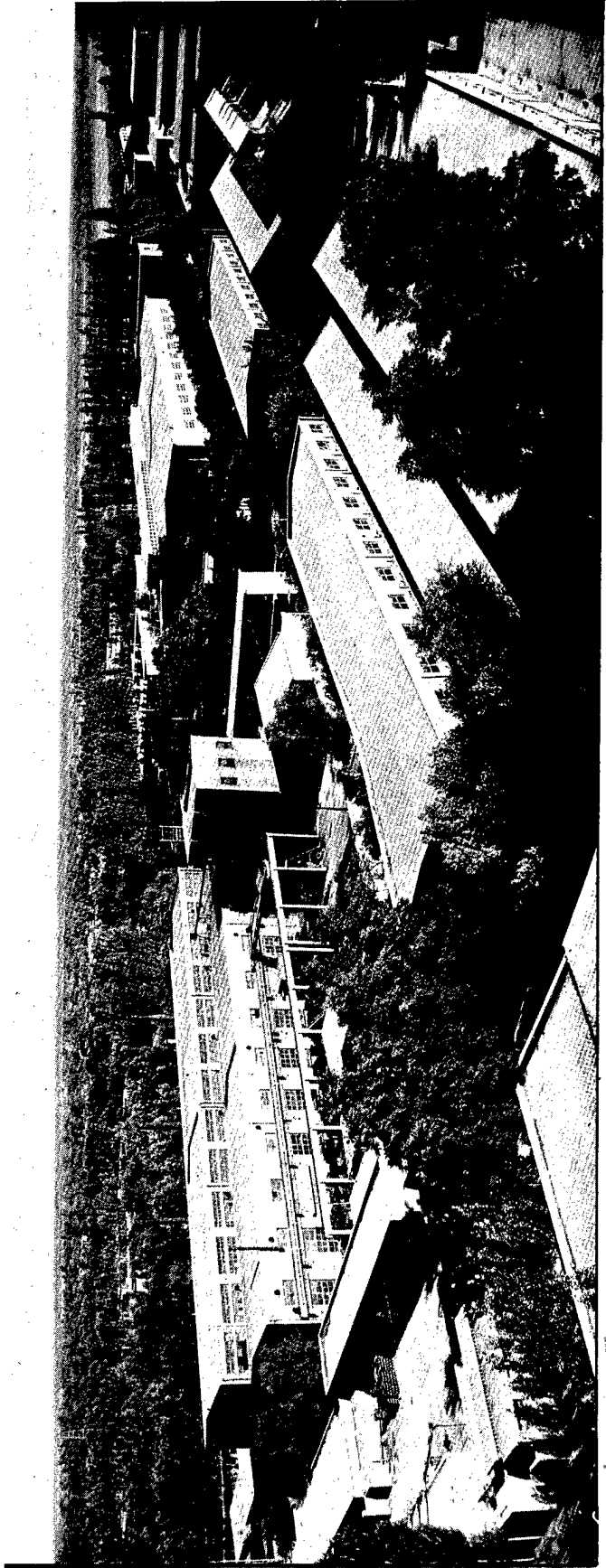


Fig. 16 View of the Wuzhong Materials Testing Machine Plant in Ningxia. This 20-year-old plant is turning out four series of products, including hardness, impact, creep persistence, and Erichsen cupping testing meters.
[Source: Yinchuan NINGXIA HUABAO (NINGXIA PICTORIAL) in Chinese, trial edition, 1982 p 33]

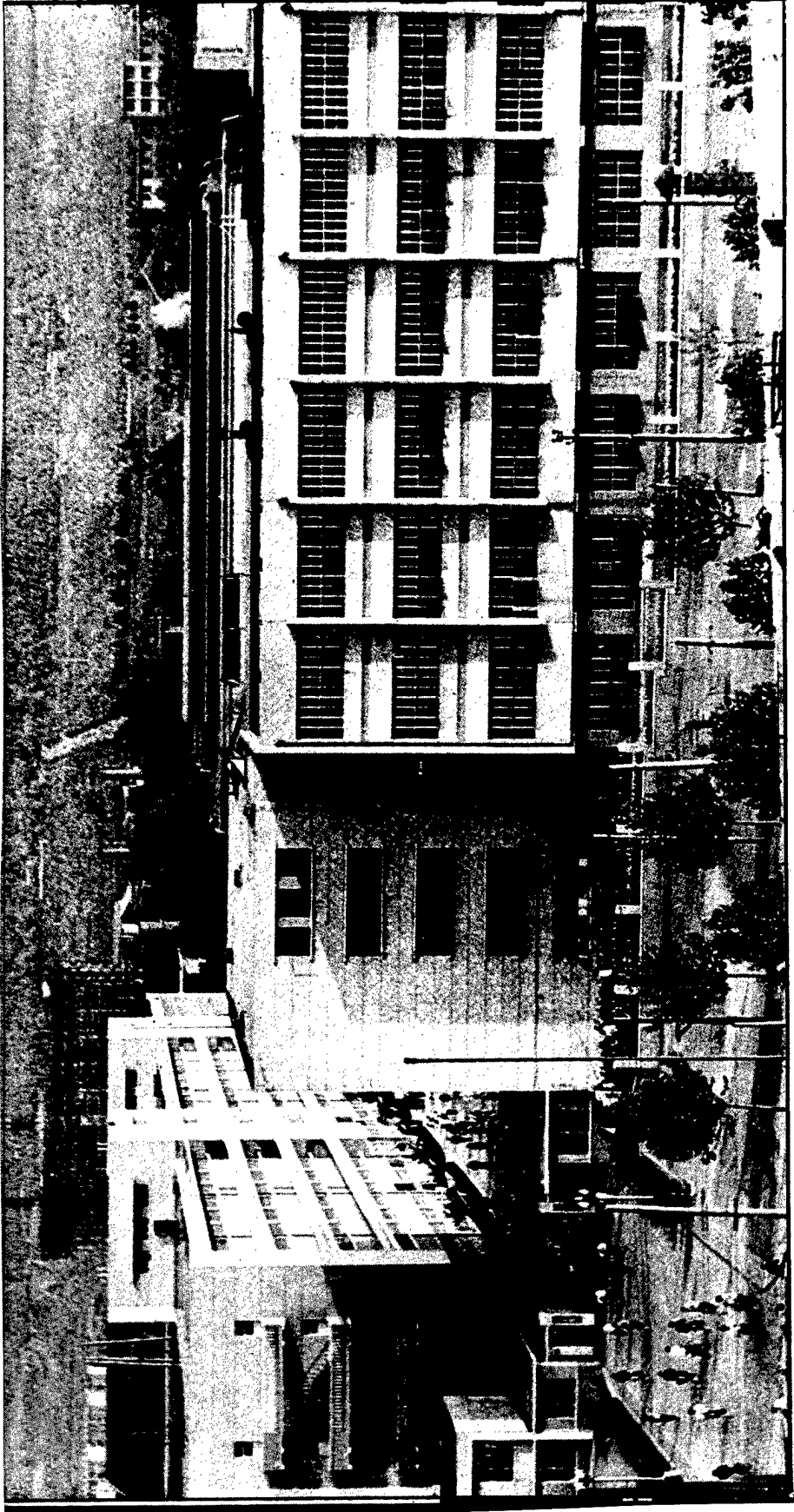


Fig. 17 Picture of the Jinan Diesel Engine Plant at the foot of Qianfo Mountains in Shandong
[Source: Jinan SHANDONG HUABAO (SHANDONG PICTORIAL) in Chinese No 5, 1983 p 6]



Fig. 18 General assembly shop of the above-mentioned diesel engine plant
[Source: Jinan SHANDONG HUABAO (SHANDONG PICTORIAL) in Chinese
No 5, 1983 p 7]

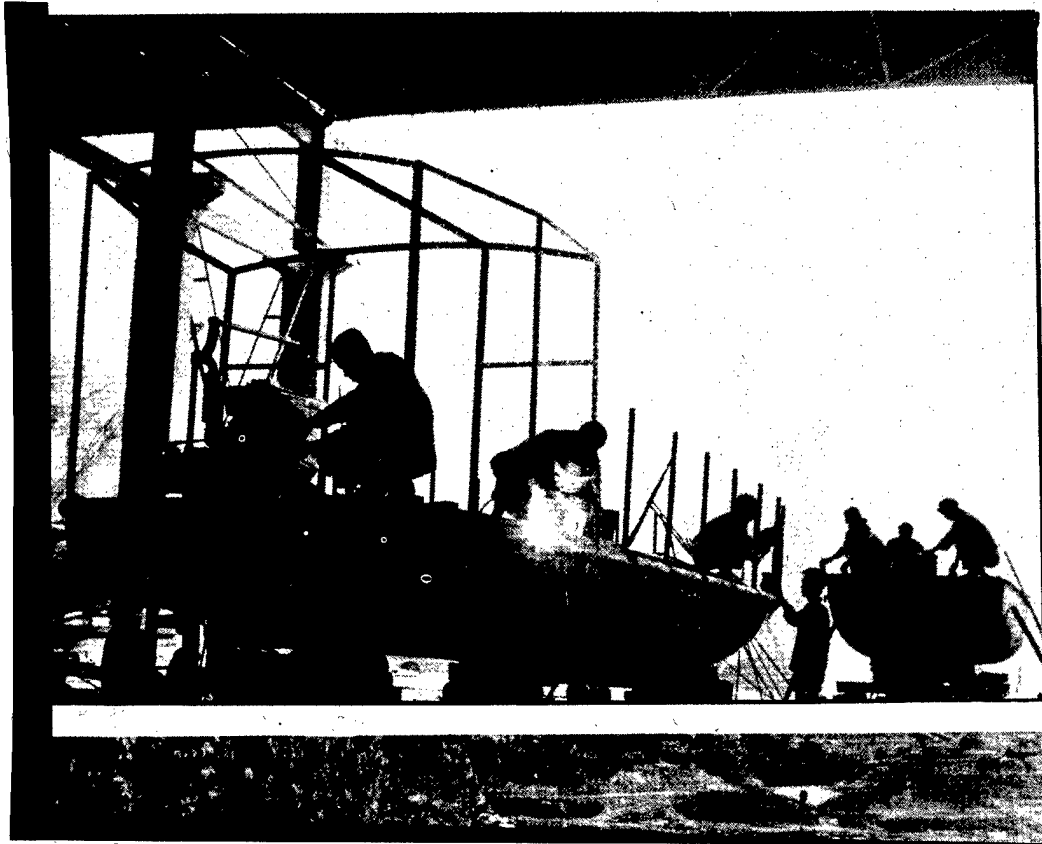


Fig. 19 The Sinan Shipyard, the largest shipyard in Guizhou Province
[Source: Guiyang GUIZHOU HUABAO (GUIZHOU PICTORIAL) in Chinese
No 2, 1983 p 10]

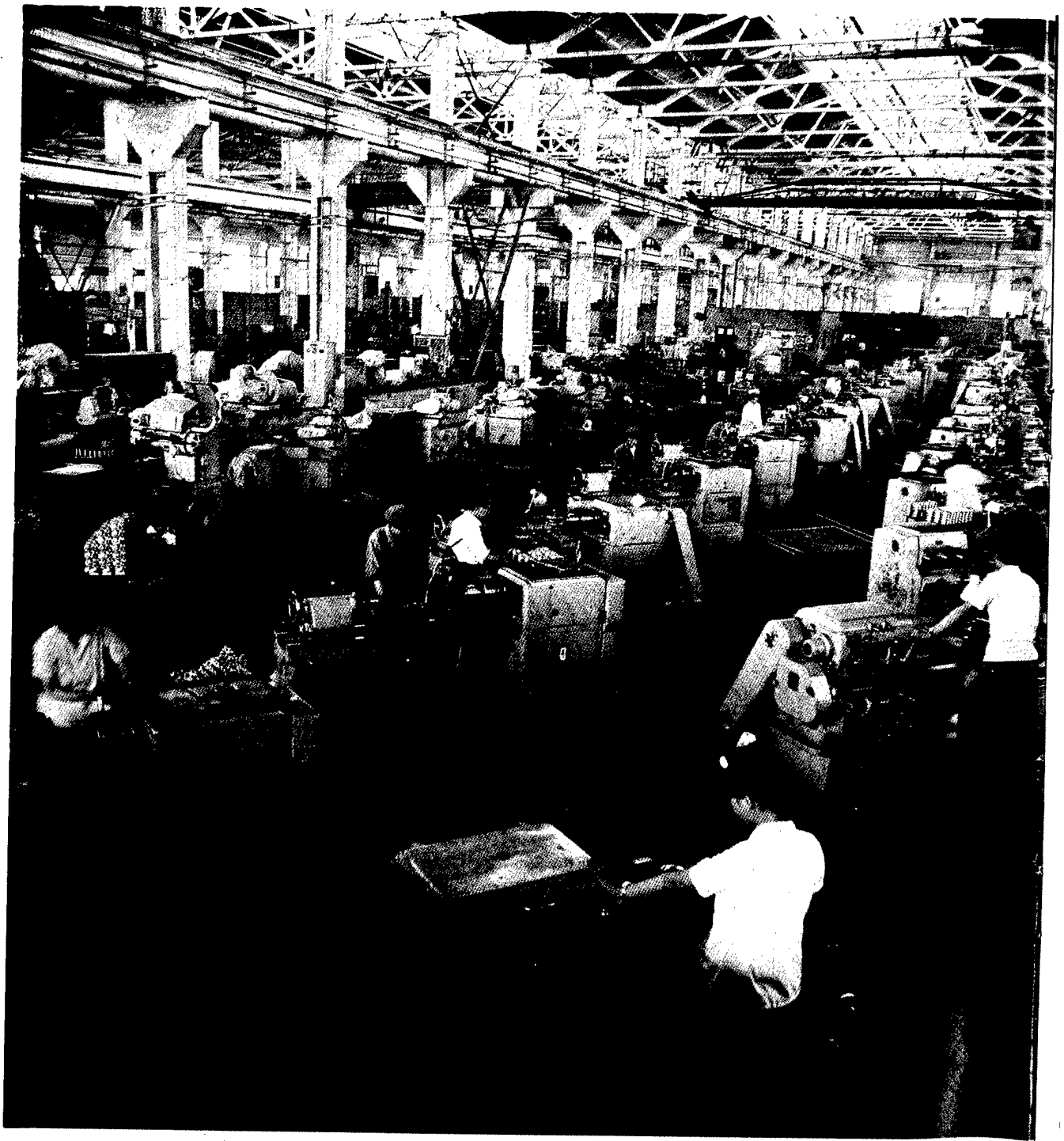


Fig. 20 The No 2 Machine Shop of the Lanzhou General Machinery Plant in Gansu
[Source: Lanzhou GANSU HUABAO (GANSU PICTORIAL) in Chinese No 2,
1983 p 4]



Fig. 21 Another view of the Yanchang Oilfield in Yanan, northern Shaanxi
[Source: Lanzhou GANSU HUABAO (GANSU PICTORIAL) in Chinese No 3,
1983 p 26]

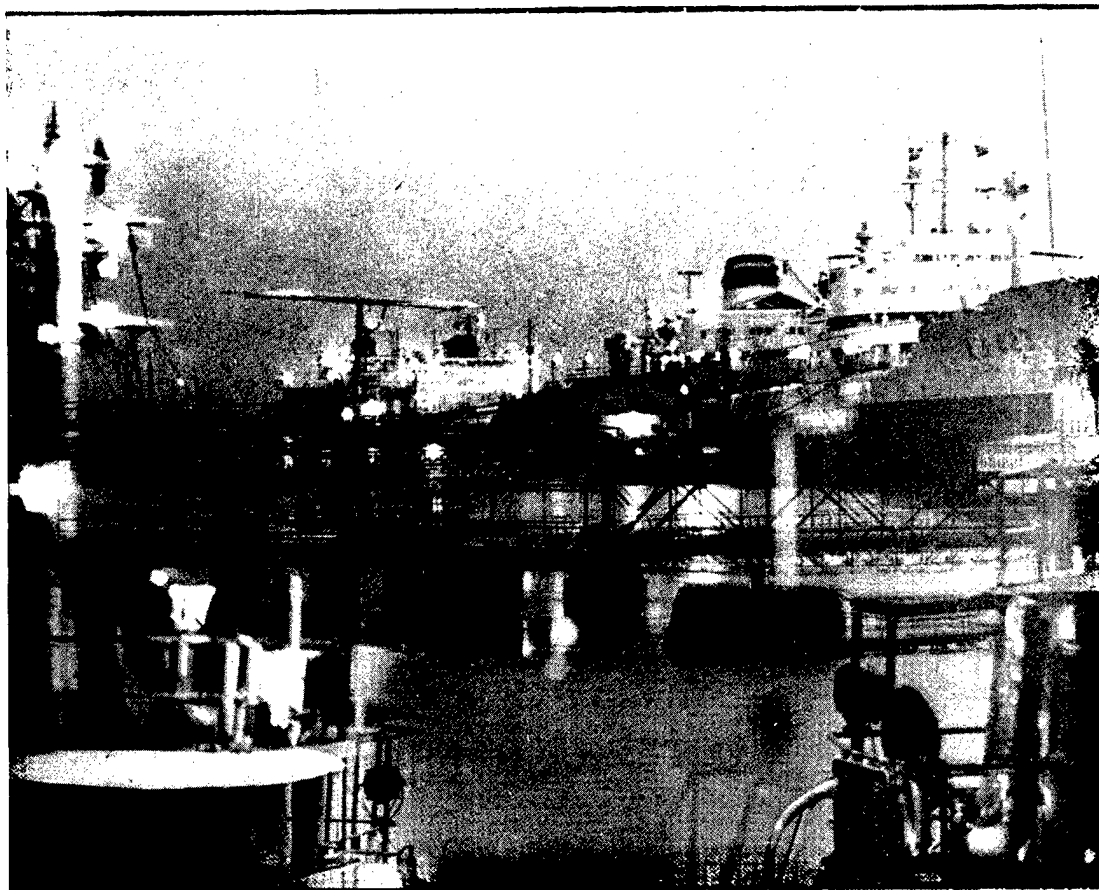


Fig. 22 Petroleum products pier of the Anqing General Petrochemicals Plant in
Anhui. It is the largest oil products pier along the Changjiang River.
[Source: Hefei ANHUI HUABAO (ANHUI PICTORIAL) in Chinese No 2, 1983 p 6]

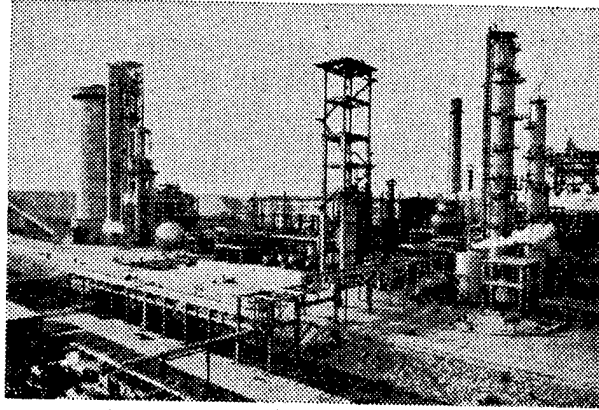


Fig. 23 Full view of the Anqing General Petrochemicals Plant's chemical fertilizer plant in Anhui.
[Source: Beijing GONGREN RIBAO in Chinese 13 Mar 83 p 3]

CSO: 4013/280

END