



NAVAL FACILITIES ENGINEERING SERVICE CENTER
Port Hueneme, California 93043-4370

Technical Report
TR-2087-ENV

**OPERATIONAL TEST REPORT FOR FIELD
DEMONSTRATION TESTING OF THE
MOBILE ALKALINE CLEANER RECYCLER**

by

Aviva Speecal

May 1998

19980901 039

DTIC QUALITY INSPECTED 1

Approved for public release; distribution is unlimited.

REPORT DOCUMENTATION PAGE			Form Approved OMB No. 0704-018	
Public reporting burden for this collection of information is estimated to average 1 hour per response, including the time for reviewing instructions, searching existing data sources, gathering and maintaining the data needed, and completing and reviewing the collection of information. Send comments regarding this burden estimate or any other aspect of this collection information, including suggestions for reducing this burden, to Washington Headquarters Services, Directorate for Information and Reports, 1215 Jefferson Davis Highway, Suite 1204, Arlington, VA 22202-4302, and to the Office of Management and Budget, Paperwork Reduction Project (0704-0188), Washington, DC 20503.				
1. AGENCY USE ONLY (Leave blank)		2. REPORT DATE May 1998		3. REPORT TYPE AND DATES COVERED Interim
4. TITLE AND SUBTITLE OPERATIONAL TEST REPORT FOR FIELD DEMONSTRATION TESTING OF THE MOBILE ALKALINE CLEANER RECYCLER			5. FUNDING NUMBERS	
6. AUTHOR(S) Aviva Speceal				
7. PERFORMING ORGANIZATION NAME(S) AND ADDRESSE(S) Naval Facilities Engineering Service Center 1100 23rd Avenue Port Hueneme, CA 93043-4370			8. PERFORMING ORGANIZATION REPORT NUMBER TR-2087-ENV	
9. SPONSORING/MONITORING AGENCY NAME(S) AND ADDRESSES Chief of Naval Operations Environmental Protection, Safety, and Occupational Health Division (N45) 2000 Navy Pentagon Washington, DC 20350-2000			10. SPONSORING/MONITORING AGENCY REPORT NUMBER	
11. SUPPLEMENTARY NOTES Program managed by Naval Facilities Engineering Command, Washington, DC				
12a. DISTRIBUTION/AVAILABILITY STATEMENT Approved for public release; distribution is unlimited.			12b. DISTRIBUTION CODE A	
13. ABSTRACT (Maximum 200 words) An automated crossflow filtration process using a ceramic membrane was evaluated for recycling spent alkaline cleaners generated from closed cabinet aqueous parts washers. Two field tests conducted at Naval Air Weapons Station Point Mugu, California, and the Naval Facilities Engineering Service Center, Port Hueneme, California, demonstrated an 80% removal of accumulated oil and grease from spent cleaners after recycling. The Mobile Alkaline Cleaner Recycler also demonstrated an 88% volumetric reduction of hazardous waste. The economics of the process is dependent on the generation of spent alkaline cleaner, local hazardous waste disposal costs, and alkaline cleaner replacement costs.				
14. SUBJECT TERMS Crossflow filtration, recycle alkaline cleaners, closed cabinet aqueous parts washers.			15. NUMBER OF PAGES 57	
			16. PRICE CODE	
17. SECURITY CLASSIFICATION OF REPORT Unclassified	18. SECURITY CLASSIFICATION OF THIS PAGE Unclassified	19. SECURITY CLASSIFICATION OF ABSTRACT Unclassified	20. LIMITATION OF ABSTRACT UL	

EXECUTIVE SUMMARY

Since the phase out of ozone depleting substances, the cleaning industry has switched to aqueous based alkaline cleaners for degreasing of metal parts. These alkaline cleaners are typically used in immersion baths and in closed cabinet aqueous parts washers. Once these aqueous cleaners have reached their emulsifying capacity they are disposed of as hazardous waste. It is estimated that the Navy currently uses 350 of these closed cabinet washers which generate approximately 580,000 pounds per year of spent alkaline cleaners. The generation of this waste stream is projected to increase as additional washers are received through the Navy's Pollution Prevention Procurement Program and as additional solvent cleaners are phased out and replaced with aqueous based alkaline cleaners. Naval Facilities Engineering Services Center (NFESC) was tasked with developing a mobile system for recycling spent alkaline cleaners from closed cabinet aqueous parts washers. NFESC developed the Mobile Alkaline Cleaner Recycler (MACR), an automated user-friendly recycling system, which utilizes a ceramic crossflow ultrafiltration membrane. This report summarizes the results from field demonstration tests conducted on the MACR.

The crossflow filtration is a pressure driven process. The technology is based upon turbulent flow through a cylinder made from porous material. The turbulent flow has a scouring effect on the membrane surface which reduces membrane fouling. Most of the flow travels a tangential path to the membrane surface, however, a small portion of flow travels from the inside membrane channel to the outside surface of the porous cylindrical membrane where it is collected for reuse. This is the purified stream known as the permeate. The major portion of flow which is rejected by the membrane exits via the tangential path. This portion is known as the retentate.

The two field demonstration tests were conducted at Naval Air Weapons Station, Pt. Mugu and at Naval Facilities Engineering Service Center, Port Hueneme using solution collected from Construction Equipment Department, CBC, Port Huemene. The main objectives of the test addressed the ability of the recycling system to remove oil and grease from spent alkaline cleaners, the effectiveness of the self-cleaning regime for membrane maintenance, membrane fouling tendencies, and process time.

Prior to field demonstration testing, the permeate flowrate of deionized water through the unused membrane filter was bench-marked at 2.3 gpm at 145 °F. After completing field testing, the final permeate flowrate of deionized water was measured was 2.5 gpm at 145 °F. The comparison of these two values indicated that no membrane fouling had occurred and the self-cleaning process effectively maintained the membrane's permeability.

A total of seven test runs were conducted which recycled nearly 1,000 gallons of spent alkaline cleaner. Each test run purified up to 140 gallons of spent cleaner in less than 6 hours. A total of 26 samples were collected from the feed, the permeate, and the retentate streams. Samples were analyzed for pH and oil and grease concentrations. The pH values of the samples taken were virtually unchanged indicating: 1) that the membrane had no effect on the pH of the test solutions, 2) the amounts of oils and greases removed from the purified solution had no noticeable effect on the pH of the cleaner. In the first field demonstration test the oil and grease concentrations for the feed, permeate, and retentate streams averaged 537.5 mg/L, 115 mg/L, and 11,750 mg/L respectively. The percent decrease of oil and grease in the purified permeate stream averaged 79%. In the second field demonstration test the oil and grease concentrations for the feed, permeate, and retentate streams averaged 3,950 mg/L, 848.5 mg/L, and 26,000 mg/L respectively. The percent decrease of oil and grease in the purified permeate stream averaged 83%.

The MACR demonstrated an 88 % volumetric reduction of hazardous waste. This volumetric reduction includes disposal of the membrane cleaner solution, a nonfoaming detergent, after the seventh use. The capability of reusing the membrane cleaner solution may vary depending upon the severity of contaminants in the spent cleaner. Currently the system is designed to process 140 gallons of spent cleaner yielding 12 gallons of concentrated hazardous waste and 128 gallons of reusable cleaner. With slight modifications to the system, process volumes can be increased to accommodate larger parts washer sumps.

The economics of the process are dependent on the generation of spent alkaline cleaner, local hazardous waste disposal costs, and alkaline cleaner replacement costs. For example, an activity with seven 140 gallon parts washers, a hazardous waste disposal rate of \$1.00 per pound, alkaline cleaner costs of \$1.68 per pound of solution, and a quarterly changeout of solution will experience annual operating costs of \$39,278. With recycling, the projected operating costs are estimated at \$11,462 resulting in an annual savings of \$27,816. Payback period is estimated to be 15 months. This estimation is based upon a sixfold extension of cleaner life and assumes equivalent labor costs.

ACKNOWLEDGEMENT

This work was funded by the Pollution Abatement Ashore Program, managed by Naval Facilities Engineering Command and sponsored by the Environmental Protection, Safety and Occupational Health Division (N45) of the Chief of Naval Operations. The information contained in this report will be used to procure and operate a mobile alkaline cleaner recycler.

TABLE OF CONTENTS

	Page
1.0 INTRODUCTION	1
2.0 BACKGROUND	1
3.0 OBJECTIVES	2
4.0 SYSTEM DESCRIPTION	2
4.1 Control Logic Description	4
4.1.1 Transfer Mode	4
4.1.2 Recycle Mode	4
4.1.3 Membrane Cleaning Mode	4
4.1.4 Rinse Mode	4
4.1.5 Return Mode	5
4.2 Valve Positions	7
4.3 Safety Switches and Tracking Devices	8
5.0 FIELD TEST DEMONSTRATION PROGRAM	8
5.1 Approach	8
5.2 Clean Water Permeability	8
5.3 Analytical Procedures	9
5.4 Monitoring	9
5.5 Standard Operating Procedures	11
5.6 Sampling Procedures	11
6.0 FIELD DEMONSTRATION TESTS	12
7.0 SYSTEM MODIFICATIONS	13
7.1 Modifications After First Field Demonstration Testing	13
7.2 Modifications After Second Field Demonstration Testing	13
8.0 FIELD DEMONSTRATION TEST RESULTS	13
8.1 Clean Water Permeability	13
8.2 Flowrate and Pressure Readings	15
8.3 Temperature Readings	16
8.4 Analytical Test Results	18
8.4.1 pH	18
8.4.2 Oil and Grease	19
8.4.3 Membrane Cleaner Solution	22

TABLE OF CONTENTS (Continued)

	Page
9.0 FURTHER CONSIDERATIONS	23
9.1 Volumetric Reduction of Hazardous Waste	23
9.2 Membrane Storage	23
10.0 CONCLUSIONS AND RECOMMENDATIONS	24
11.0 REFERENCES	26
APPENDIX A: MASS BALANCE CALCULATIONS	A-1
APPENDIX B: MATERIAL SAFETY DATA SHEETS FOR FIELD TESTING OF THE MOBILE ALKALINE CLEANER RECYCLER	B-1

LIST OF TABLES

	Page
Table 1: Ceramic Membrane Module Specifications	3
Table 2: Valve Positions During Operating Modes	7
Table 3: Clean Water Flow Rates and Permeability	14
Table 4: Flowrate, Volumetric, and Pressure Readings	15
Table 5: Temperature Readings of the Membrane Cleaner Solution	16
Table 6: pH Results For First Field Demonstration Test	18
Table 7: Laboratory Analysis of Oil and Grease For The First Field Demonstration Test	19
Table 8: Laboratory Analysis of Oil and Grease For The Second Field Demonstration Test	19
Table 9: Oil and Grease Removal	21
Table 10: Mass Balance Analysis of Oil And Grease For The Second Field Test	22
Table 11: Laboratory Analysis of Oil And Grease In The Used Membrane Cleaner Solution	23

LIST OF FIGURES

	Page
Figure 1: Process Flow Diagram	6
Figure 2: Gauge, Flow Meter, and Sampling Locations	10
Figure 3: Temperature Rise of Membrane Cleaning Solution, Run 5	18
Figure 4: Temperature Rise of Membrane Cleaning Solution, Run 6	18
Figure 5: Temperature Rise of Membrane Cleaning Solution, Run 7	19

1.0 INTRODUCTION

The Navy, like many industrial operators, is under increased regulatory, public and monetary pressures to reduce the quantities of hazardous waste that it generates each year. Executive Order 12856 mandates a 50% weight reduction by 2000 in the amount of hazardous waste produced, using 1992 as the base year, and to meet the Environmental Protection Agency (EPA) regulations. To this end, the Chief of Naval Operations (CNO) has called for a hazardous waste minimization program to put both procedures and the necessary equipment into place that would reduce the quantity of hazardous waste now treated and/or disposed of off-site under a contract or disposed of on-site at the installation.

2.0 BACKGROUND

Cleaning of metal surfaces in an aqueous alkaline solution to remove oil and grease from parts prior to finishing, coating, repair, or maintenance operations is a practice inherent to all DoD facilities that conduct depot or intermediate level maintenance. When an alkaline cleaner is used, contaminants in the form of emulsified oil and grease, and suspended solids comprised of metals, and carbonaceous particles accumulate in the solution. Over time, the levels of contaminants build to a point where they interfere with the surface cleaning reactions, and also exceed the capacity of the cleaning solution to emulsify additional oil. At this point the cleaner is rendered ineffective, and the solution is discarded, and replaced with fresh chemicals. After use, alkaline cleaning solutions, even if initially environmentally benign, are disposed off-site or treated on-site as hazardous wastes, due to the presence of chemically stabilized oil/water emulsions, and possibly Federally or state regulated heavy metals.

Spent alkaline cleaning solutions can be recycled by physically separating the suspended solids, emulsified oil, and grease from solution, while leaving the constituents of the cleaner-formulation intact. Crossflow filtration (CFF) is considered ideal for this application. CFF is a pressure driven process in which the feed stream flows in a path tangential to the filter or membrane surface. The advantage of this technology over barrier filtration is that the scouring action created by the turbulent flow through the membrane structure reduces fouling. Membrane pore sizes in the micro (0.1 to 5 microns) to ultrafiltration (0.005 - 0.1 to microns) range are required.

With the phase out of cleaning methods based on ozone depleting substances (ODS), the Navy has been purchasing cabinet-type parts-washers that utilize non-ODS aqueous solutions, typically alkaline cleaners, as substitutes. Driven by pollution prevention mandates, NAVFAC tasked Naval Facilities Engineering Service Center (NFESC) to develop a cost effective, user-friendly recycling system to extend the life of spent alkaline cleaners generated from closed cabinet aqueous parts washers. After testing various membranes, NFESC developed an automated recycling system utilizing crossflow technology with a ceramic membrane. The mobile system is designed to service multiple parts washers located throughout an activity.

3.0 OBJECTIVES

The objectives of the field demonstration test program were as follows:

- Determine the ability of the recycling system to remove oil and grease from a spent alkaline cleaner and from accumulated spent membrane cleaning solution.
- Determine membrane fouling tendencies (by conducting clean water permeability test before, between, and after recycling test runs and by monitoring permeate flowrates during recycle runs).
- Determine and evaluate the most effective membrane cleaning process (i.e. duration of membrane self-cleaning process, membrane cleaner solution, temperature, flow configuration).
- Determine the number of times the membrane cleaning solution can be reused before being rendered inadequate.
- Determine operation, maintenance, and life cycle costs.

4.0 SYSTEM DESCRIPTION

The Mobile Alkaline Cleaner Recycler (MACR) is a skid-mounted system with dimensions 8 x 5 x 6 feet. Basic system components consist of four tanks, a ceramic membrane manufactured by U.S. Filter, and three pumps supplied by Pump Engineering Company. The four tanks include a 55 gallon concentration or working tank, a 180 gallon permeate tank, a 37 gallon membrane cleaner tank, and a 37 gallon rinse tank. Two of the pumps are 1/2 horsepower close-coupled, positive-displacement, screw-type, progressive-cavity pumps used to transfer the feed and the purified solution. The third pump is a 7.5 horsepower close-coupled, centrifugal pump used to recirculate solution through the system. Piping and fittings are constructed from chlorinated polyvinylchloride (CPVC), polypropylene, or 316 stainless steel. The membrane specifications are presented in Table 1. The fully automated system requires no further operator assistance after hookup and includes a built-in membrane cleaning cycle. The system requires 240 volts and 3 phase power to operate the transfer pumps, the recirculation pump, and the actuated valves.

Table 1: Ceramic Membrane Module Specifications

Parameter	Specification
Service Type	Light Industrial
Gasket Material	Ethylene Propylene Rubber (EDPM)
Membrane Area	18 Square Feet
Channel Opening Diameter	4 Millimeters
Element Length	1020 Millimeters
Number of Elements	7
Channels Per Element	19
Nominal Pore Diameter	0.05 Microns
Support Layer Material	α -alumina
Filter Surface	Zircona
Fluid Temperature Range	60-200 °F
Feed Solution pH	8-14

After inserting inlet and outlet transfer hoses into the parts washer sump and activating the 'Start' button, contaminated bath solution is automatically transferred by pump from the aqueous parts washer sump, through a bag filter, and into the concentration tank. The contaminated solution is recirculated from the concentration tank through the membrane element and back to the concentration tank. At the membrane surface, contaminants in the form of oil and grease emulsions are rejected and exit the membrane longitudinally. This stream, which is referred to as the retentate, is returned to the concentration tank. The aqueous cleaning solution, which passes through the membrane, is purified for reuse and exits the membrane laterally. This stream, which is referred to as the permeate, is collected in the permeate tank. A series of liquid level switches in the concentration tank regulate the transfer of solution to prevent overfilling and to supply new spent solution as the permeate exits the recirculation loop. When all the solution in the parts washer sump has been transferred, the liquid level in the concentration tank draws down, thus concentrating the retentate, to a predetermined volume of 11.75 gallons. After draw-down, the unit switches over to the membrane cleaning mode. The membrane cleaning solution, a non-foaming detergent, is circulated through the membrane for 1 to 2 hours with the permeate line redirected back to the membrane cleaner tank. After the cleaning cycle is completed, rinse water is circulated through the system with the permeate line directed into the permeate tank. The rinse water volume which is directed to the permeate tank is equal to the volume of the retentate. When the rinse cycle is completed, the purified solution in the permeate tank is returned from to the parts washer sump. Prior to the next use, the concentrated retentate is manually drained from the bottom of the concentration tank and containerized for hazardous waste (HW) disposal. The water tank is then refilled to the fill line. The membrane cleaning solution is reused until it becomes ineffective. The MACR process flow is illustrated in Figure 1.

4.1 Control Logic Description

After connecting power to the unit, inserting the cleaner transfer hose and permeate return hose into the bottom of the aqueous parts washer sump, and starting the unit, the system transitions through five modes of operation as detailed below.

4.1.1 Transfer Mode

The Transfer Pump (TP) runs until the liquid level in the Concentration Tank (CT) reaches Liquid Level Switch 1 (LLS-1). The TP then runs intermittently based on inputs from LLS-1 and LLS-2 during the recycle mode. LLS-1 will cause the TP to turn off and LLS-2 will cause the TP to turn on. All actuated valves A-1 through A-5 are in the “a” position. Actuated valve A-6 is in the closed position.

4.1.2 Recycle Mode

Recirculating Pump (RP) starts running when the liquid level in the CT first reaches LLS-2. After the RP begins running, valve A-6 opens. When no flow is detected by the No Flow Switch (NFS) located on the discharge side of the TP, the TP pump turns off and remains off. Once this occurs, the liquid level in the CT draws down until the liquid level reaches LLS-3 causing the RP to turn off, thus terminating the recycle mode.

4.1.3 Membrane Cleaning Mode

Once RP turns off, a timer is activated for the membrane cleaning mode. Valves A-1, A-2, and A-3 move into the “b” position and A-6 closes. Valves A-4 and A-5 are in the “a” position. The RP begins running after which valve A-6 opens. The membrane is cleaned by circulating a hot, non-foaming detergent solution through the membrane with both the permeate and retentate directed back to the membrane cleaner tank (MCT). The RP will heat the detergent solution approximately one degree ^oF per minute. When the preset value of the timer is reached, or when the solution in the MCT reaches 180 ^oF the Membrane Cleaning Mode is automatically terminated.

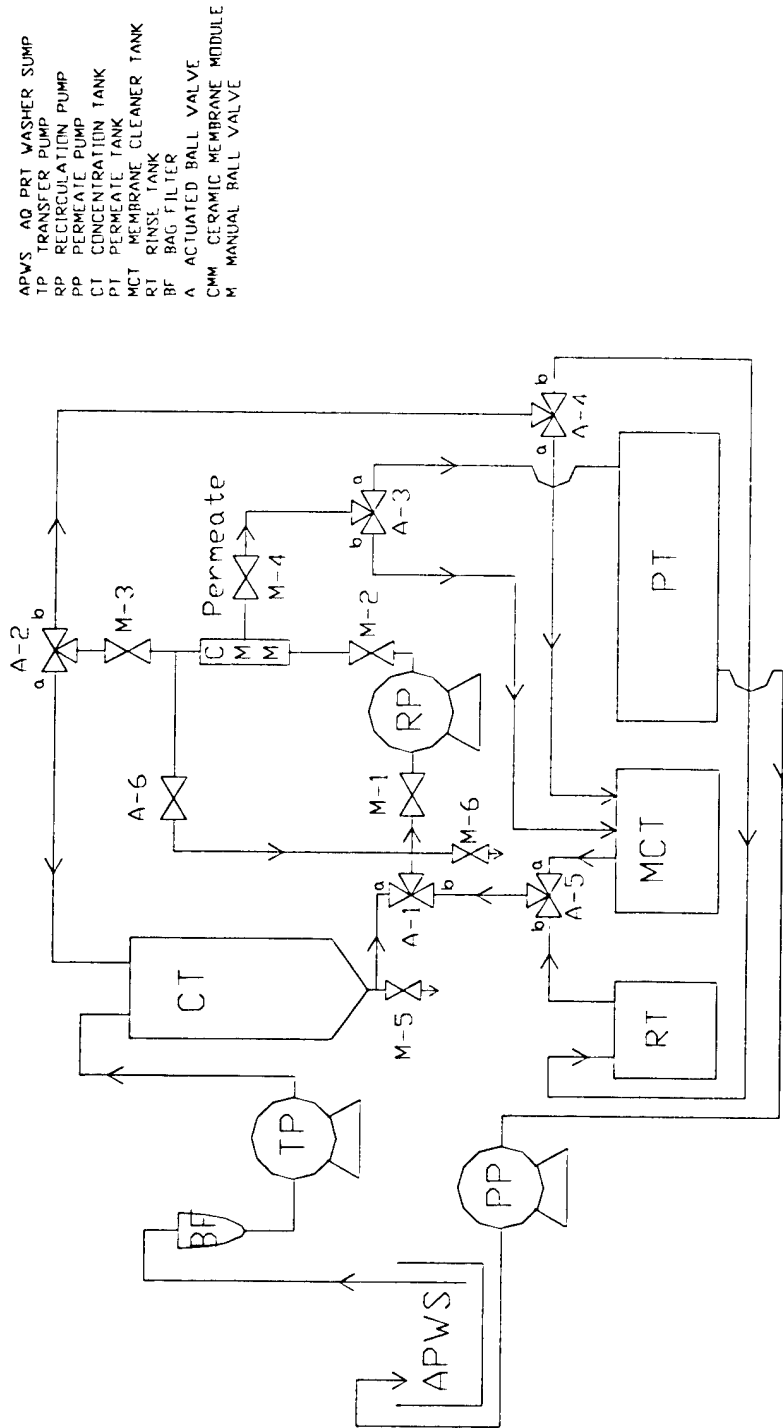
4.1.4 Rinse Mode

When the Membrane Cleaning Mode is terminated, the RP turns off. Valve A-6 closes, valve A-3 moves into the “a” position, and valves A-4 and A-5 move into the “b” position. The RP begins running after which valve A-6 opens and rinse water is circulated through the membrane with the permeate directed back into the permeate tank and the retentate directed back into the rinse tank (RT). The water level in the RT draws down to LLS-4 causing the RP to turn off and remain off, thus terminating the Rinse Mode.

4.1.5 Return Mode

After the RP turns off, valve A-6 closes and the permeate pump (PP) turns on. The permeate accumulated in the Permeate Tank (PT) is returned to the aqueous parts washer sump (APWS). When the liquid level in the permeate tank draws down and activates LLS-5, valves A-1, A-2, A-4, and A-5 return to the "a" position. Once the NFS, located on the discharge side of the PP, detects no flow, the PP turns off and the cycle is completed.

FIGURE 1: PROCESS FLOW DIAGRAM



4.2 Valve Positions

The automated and manual valve positions for the operating modes are presented in Table 2.

Table 2: Valve Positions During Operating Modes

Valve	Transfer	Recycle	Membrane Cleaning	Rinse	Return ¹
A-1	"a"	"a"	"b"	"b"	"a" ¹
A-2	"a"	"a"	"b"	"b"	"a" ¹
A-3	"a"	"a"	"b"	"a"	"a"
A-4	"a"	"a"	"a"	"b"	"a" ¹
A-5	"a"	"a"	"a"	"b"	"a" ¹
A-6	Closed	Closed / Open ²	Closed / Open ²	Closed / Open ²	Closed
M-1	Open	Open	Open	Open	Open
M-2 ³	Open	Open	Open	Open	Open
M-3	Open	Open	Open	Open	Open
M-4 ³	Open	Open	Open	Open	Open
M-5 ⁴	Closed	Closed	Closed	Closed	Closed
M-6 ⁴	Closed	Closed	Closed	Closed	Closed

- ¹ Valves change near end of cycle.
- ² Opens after RP Starts. Closes after RP stops.
- ³ Closed during storage.
- ⁴ Opened for periodic cleaning and draining the lines.

4.3 Safety Switches And Tracking Devices

- If LLS-1 malfunctions, LLS-6 will act as a High-High switch and will shut off the TP to prevent the concentration tank from overflowing.
- If the temperature probe in the MCT senses that the detergent solution exceeds 180 °F (due to the addition of pump energy into the system), the Membrane Cleaning Mode will terminate and the Rinse Mode will begin.
- LLS-7 will act as a High High switch and will shut off the TP to prevent the permeate tank from overflowing.
- If no flow is detected in either of the No Flow Switches (NFS) located on the discharge side of the TP and PP, the TP or PP will turn off.
- The Turbine Flow Meter with Totalizer (TFM) tracks the amount of permeate generated for record keeping purposes.

5.0 FIELD DEMONSTRATION TEST PROGRAM

5.1 Approach

The test program consisted of a total of seven performance runs processing two different spent alkaline cleaners, Ultraclean SP and Hotze Tubmate. Performance runs #1 through #4 were conducted during the first field demonstration test at Naval Air Weapons Station Pt. Mugu, CA and performance runs #5 through #7 were conducted during the second field demonstration test at NFESC, Port Hueneme, CA. Each performance run recycled up to 140 gallons of spent alkaline cleaner collected from one to four different closed cabinet aqueous parts washers. The performance of the MACR was measured by standard methods of chemical analysis, by clean water permeability (CWP) tests, and by monitoring the permeate flowrate during the performance runs.

5.2 Clean Water Permeability

Prior to field demonstration testing, the performance of the unused membrane filter was bench-marked according to the permeability of the membrane to deionized water at 140 °F. The value obtained, known as clean water permeability (CWP), is defined as the volume of permeate processed through the membrane per unit area of membrane surface per time (measured in L/m²-hr). The CWP is used to determine any decrease in membrane performance that is an indication of membrane fouling. Subsequent CWP tests were conducted after each of the four performance runs in the first field test and prior to run #5 and following run #7 in the second field test. Values obtained were compared with the bench-mark value.

5.3 Analytical Procedures

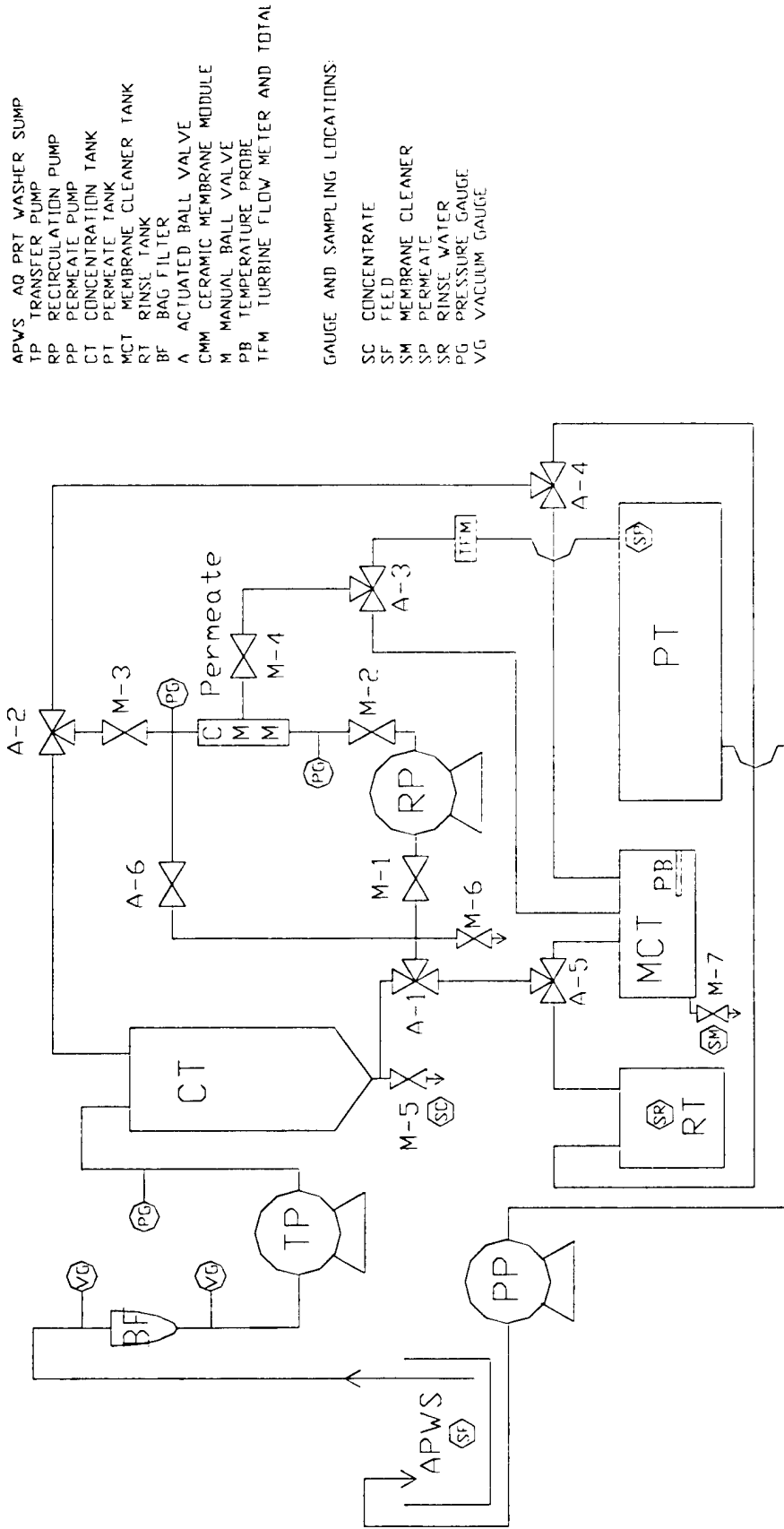
The samples collected during the first field demonstration test were analyzed for pH and oil and grease. The samples collected from the second field demonstration test were analyzed for oil and grease. Oil and grease and pH samples were analyzed by a local contracted laboratory using EPA Method 413.1 and EPA Method 150.1 respectively. Analysis was not performed for alkalinity, or surfactant losses for the following reasons:

- Tests results from a joint Naval Facilities Engineering Service Center (NFESC) and EPA Strategic Environmental Research and Development Program (SERDP) project conducted at Naval Aviation Depot (NADEP) North Island demonstrated that the pH and alkalinity of alkaline cleaner solutions are not affected by the presence of oil and grease nor are they affected by the CFF filtration process (Chen, Drescher, Pollack, and Wang).
- The permeate is not expected to contain surfactants (Chen, Drescher, Sass, Giammar, Hutson, and Pollack). The EPA SERDP study determined that surfactants which are bound to the oil and grease in the form of an emulsion, are basically removed from the cleaner during the filtration process.

5.4 Monitoring

The pressure gauges located on the transfer pump discharge side and the inlet and outlet sides of the membrane and vacuum gauges on the inlet and outlet side of the bag filter were monitored. Increased readings on the outlet vacuum gauge could indicate a clogging bag filter. Increased pressure readings on the membrane outlet could indicate possible membrane fouling or obstructions in the piping. A turbine flow meter on the permeate line tracked permeate flowrates and totalized the volume of permeate processed. Start and stop times and gallons processed were recorded. Figure 2 shows sampling and gauge locations.

FIGURE 2: GAUGE, FLOW METER, AND SAMPLING LOCATIONS



- APWS AQ PRT WASHER SUMP
- TP TRANSFER PUMP
- RP RECIRCULATION PUMP
- PP PERMEATE PUMP
- CT CONCENTRATION TANK
- PT PERMEATE TANK
- MCT MEMBRANE CLEANER TANK
- RT RINSE TANK
- BF BAG FILTER
- A ACTUATED BALL VALVE
- CMM CERAMIC MEMBRANE MODULE
- M MANUAL BALL VALVE
- PB TEMPERATURE PROBE
- TFM TURBINE FLOW METER AND TOTAL

- GAUGE AND SAMPLING LOCATIONS:
- SC CONCENTRATE
 - SF FEED
 - SM MEMBRANE CLEANER
 - SP PERMEATE
 - SR RINSE WATER
 - PG PRESSURE GAUGE
 - VG VACUUM GAUGE

5.5 Standard Operating Procedures

For each test run the following steps were taken: 1) 120 to 140 gallons of spent alkaline cleaner were pumped into a 200 gallon tank used to simulate the sump of an aqueous parts washer, 2) Deionized water was added to the rinse tank to the fill line, 3) Valves were checked for correct starting positions, 4) Prerun samples were taken, 5) After connecting to the utility hookup, the start button was activated, 6) As the system transferred solution, the unit was checked for leaks, pressure and vacuum gauges were monitored and recorded, and alkaline cleaner permeate and rinse water permeate samples taken, 7) As the recycling process progressed, additional permeate samples and retentate samples were collected and system operating conditions were monitored and recorded. Operating conditions included permeate flowrates, volumes of permeate processed, and temperature rises of the membrane cleaning solution. In the first field demonstration test, a CWP determination followed each test run. In the second field demonstration test, CWP tests were only performed before the fifth and after the final run. After the completion of each field demonstration test, all hazardous wastes were containerized, labeled, and disposed through proper channels.

5.6 Sampling Procedures

In the first field demonstration test, single samples were taken prior to the test runs, during the test runs, and after the test runs. The prerun sample set consisted of samples of alkaline cleaner from the feed stream, rinse water, and the membrane cleaner solution. Samples of the alkaline cleaner permeate and rinse water permeate were collected during the recycling mode. Postrun samples were taken of the rinse water, the membrane cleaner solution, and the retentate.

In the second field demonstration test, samples of alkaline cleaner were collected from the feed prior to testing and when approximately half of the feed had been processed. Multiple permeate samples were collected at the beginning, middle, and near the end of the recycling mode. Multiple retentate samples were also collected after the recycling mode terminated. A fifth and last test run was conducted using the spent membrane cleaner solution accumulated from the first and second field demonstration tests. Multiple samples were taken of the feed, the permeate, and the retentate.

Each 1 liter sample was collected in specially cleaned glass jars with Teflon lined lids and marked labels. The samples were collected and labeled by NFESC personnel and sent off-site to a contracted laboratory where they were analyzed.

During the first field test, sampling the feed, retentate, and membrane cleaner streams was accomplished by filling the collection jar via a sampling port located near the bottom of the respective tank. Sampling of the permeate was accomplished by filling the collection jar directly from the permeate effluent line. Sampling the water stream was accomplished by dipping the collection container into the middle of the rinse tank. During the second field test, sampling the feed was accomplished by dipping the sample

container into the middle of the feed tank while an aerator mixed the feed solution. The contents of the concentration tank were drained into a separate tank, measured, and sampled by dipping the sample container into the middle of the tank but without the aid of an aerator. Sampling of the permeate was accomplished by filling the sample container directly from the permeate effluent line. Sampling locations are shown in Figure 2.

6.0 FIELD DEMONSTRATION TESTS

The first field demonstration test was conducted at Naval Air Weapons Station Pt. Mugu, CA from 29 April to 12 May 1997. Four test runs were conducted using spent alkaline cleaner from one closed cabinet aqueous parts washer located in the Ground Support Equipment shop. The spent alkaline cleaner, Ultraclean SP, had been used in a Roto-Jet parts washer for one year. Four CWP tests were also performed after each of the four test runs to determine the degree of membrane fouling. A total of 28 samples were collected and analyzed for pH and oil and grease.

The first performance test run proceeded with a few minor interruptions due to a faulty circuit breaker at the utility connection. During the second run, however, the membrane showed evidence of severe fouling. Testing was halted and the membrane cleaning process re-examined. A solution of Cascade LiquiGel, a non-foaming dishwashing detergent, proved to be an effective cleaner. Testing resumed without further fouling incidents.

The second field demonstration test was conducted at NFESC, Port Hueneme, CA from 16 June to 15 August 1997. The testing consisted of four runs. Runs #5 through #7 processed spent alkaline cleaner collected from four different Better Engineering aqueous parts washers located at Construction Equipment Department (CED), CBC Port Hueneme. The collected alkaline cleaner, Hotzy Tubmate, was used to clean diesel engines and other automotive parts for vehicle maintenance. Shop personnel reported that over one year had passed since each of the parts washer solutions had been changed. The solution in one parts washer was reported to have in use for two years. The eighth and final run processed the used Cascade LiquiGel solution (accumulated from previous membrane cleanings) to determine the membranes capability to remove oil and grease from this waste stream. A total of 23 samples were collected and analyzed for and oil and grease.

7.0 SYSTEM MODIFICATIONS

7.1 Modifications After First Field Demonstration Testing

During the first field demonstration test, one of the automated controls presented an operational problem. The recirculation pump was programmed to run an additional minute after the liquid level in the concentration tank had drawn past the lowest liquid level switch (LLS-3). In the lowered position, the switch, would activate the system to begin the Membrane Cleaning Mode. Setting the recirculation pump to run an extra minute allowed the switch to remain in the lowered position when residual membrane drainage raised the liquid level. However, due to greater solution viscosities, some spent alkaline cleaners required the recirculation pump to run longer than one minute to prevent residual membrane drainage from raising the lowest liquid level switch. After the first field demonstration test, this problem was corrected by rewiring the electrical circuitry to accommodate variations in solution viscosity.

On the permeate line, between the membrane and the permeate tank, a two way actuated ball valve was replaced with a three way actuated ball valve. Instead of merely scouring the inner membrane wall, this new configuration allows the membrane cleaning solution to also pass through the membrane pores as permeate. The membrane cleaning solution permeate is then directed back to the membrane cleaner tank via the three way valve.

7.2 Modifications After Second Field Demonstration Testing

The modifications to the system after the second field demonstration test eliminated an immersion heater used for heating the membrane cleaning solution. A temperature safety feature was installed. When the temperature probe in the MCT senses the detergent solution exceeding 180 °F (due to the addition of pump energy into the system), the Membrane Cleaning Mode terminates and the Rinse Mode automatically begins. A system bypass button and switch were also installed to allow recirculation of harsh chemicals through the system without passing through each automated mode.

8.0 FIELD DEMONSTRATION TEST RESULTS

8.1 Clean Water Permeability

The performance of the unused membrane filter was established by an initial clean water permeability (CWP) test. CWP tests were also conducted after various test runs. Any decrease in permeability from the benchmarked CWP would indicate membrane fouling. CWP testing consisted of circulating deionized water (heated to approximately 175 °F) through the system. When the permeate temperature fell to 140 °F the permeate flowrate was recorded. Results of the initial benchmark test and subsequent CWP tests are shown in Table 3.

Table 3: Clean Water Flow Rates and Permeability

Run Number	Date	Location	Permeate Flowrate (gpm)	Permeate Temperature (°F)	Flux* (L/(m ² x hr))
Benchmark	4-25-97	NFESC, Port Hueneme	2.3	145	31.24
1	4-29-97	NAWS, Pt Mugu	1.5	100	20.37
2	4-30-97	NAWS, Pt Mugu	0.2	132	2.72
3	5-9-97	NAWS, Pt Mugu	1.8	140	24.45
4	5-12-97	NAWS, Pt Mugu	1.5	140	20.37
5**	6-4-97	NFESC, Port Hueneme	2.2	135	29.88
7	8-13-97	NFESC, Port Hueneme	2.5	143	33.95

* Flux is defined as the volume of permeate produced per square meter of membrane surface area per hour.

** CWP test performed prior to Run #5.

Clean Water Permeability tests were performed after each of the four runs in the first field demonstration test. It was felt that the added treatment of hot water running through the system after each test run might contribute an additional cleaning to the membrane and could possibly skew permeability flowrates for the following test run. Therefore, before conducting the second field demonstration test it was decided to perform a CWP test before the fifth run and after the last run in order to better determine the effect of membrane fouling during typical use in the field.

The permeability of the new ceramic membrane was benchmarked at 2.3 gpm at 145 °F. The subsequent tests in the first field demonstration series showed a steady decrease in the membrane's permeability. Although the permeability flowrate of 0.2 gpm in Run #2, indicated a fouled membrane, fouling was reversed as seen in Run #3 where the permeability flowrate was 1.8 gpm at 140 °F. The permeability flowrate of 1.5 gpm at 140 °F in the fourth (last permeability test of the Mugu field demonstration test) showed a 35% decrease from the benchmarked permeability.

The efficiency of the cleaning process in the NFESC field test increased after the system was reconfigured (from that used at Mugu) to allow the membrane cleaning solution to permeate through the membrane pores instead of just scouring the surface of the inner membrane wall. This increased cleaning efficiency is seen in the higher permeate flowrates of runs #5 through #7 which processed a spent cleaner heavily loaded with particulates and eight times more oil and grease than that found in the spent cleaner processed in the Mugu field demonstration test runs. After the seventh run, a total of approximately 950 gallons of spent solution was processed through the system and the final CWP, 2.5 gpm at 143 °F, was undiminished from the benchmarked permeability, 2.3 gpm at 145 °F.

8.2 Flowrate and Pressure Readings

Figure 2 shows the locations of the flow meter and pressure gauges on the system. Table 4 shows the flowrate and pressure readings recorded during the two field demonstration tests.

Table 4: Flowrate, Volumetric, and Pressure Readings

Run	Permeate Flowrate (gpm)	Permeate Accumulated (gal)	Membrane Pressure Inlet (psi)	Membrane Pressure Outlet (psi)	Transfer Pump Pressure (psi)
1	0.9	58	28	9	10
	0.8	83	28	9	-
	1.0	106	28	9	-
2	(Trickle)	-	30	8	10
	0.4	-	30	8	-
3	1.3	42	28	8	10
4	1.3	65	28	8	10
5	1.1	24	36	0	10
	0.9	45	36	0	-
	0.9	62	36	0	-
	0.8	73	36	0	-
6	1.3	20	35	0	10
	1.3	60	35	0	-
	1.4	85	35	0	-
7	1.3	19	35	0	10
	1.4	60	35	0	-
	1.3	85	35	0	-

In the first field demonstration, permeate flowrates ranged between 0.9 and 1.3 gpm and averaged 1.1 gpm. This excludes the extremely low flowrates from run #2 which indicated a fouled membrane. Permeate flowrates in the second field demonstration test ranged from 0.9 to 1.4 gpm and averaged 1.2 gpm. Though ranges and averages for the two demonstration tests appear similar, the system in the second field test was challenged with a solution notably higher in solids and with an oil and grease concentration 8 times greater than that processed in the first field demonstration test. The effects of this highly contaminated solution are clearly indicated in the initial run of the series, run #5, which showed a steady decline in permeate flowrates from 1.1 to 0.8 gpm. During this particular run the bag filter clogged twice during solution transfer. Transfer was prematurely halted to prevent a third clogging when a fine sludge was noticed settling in the bottom of the feed tank. Apparently enough particulates were screened out during this run that subsequent runs did not experience clogged bag filters or decreasing permeate flowrates.

Transfer pump pressure remained at 10 psi throughout all test runs. Membrane pressures for the first four runs average 28 psi for the inlet and 8.4 psi for the outlet. Membrane pressures for the last four runs average 35 psi for the inlet and 0 psi for the outlet. The difference in operating membrane pressures is probably a result of the different properties and contaminants of the two alkaline cleaners tested, Ultraclean SP and Hotzy Tubmate.

8.3 Temperature Readings of Membrane Cleaner Solution

Before each run in the first field demonstration test, the desired temperature of 140 °F for the membrane cleaning solution was programmed into the controller for the immersion heater. The immersion heater heated the solution to 140 °F in approximately 2 hours and this temperature was maintained until the membrane cleaning cycle started. During the membrane cleaning process the temperature of the membrane cleaner solution continued to climb past the programmed set point even though the heater was not active. This rise in temperature was attributed to the conversion of energy produced by the recirculating pump to heat. In order for the temperature of the solution not to exceed the temperature rating of 210 °F for CPVC piping, the cover of the membrane cleaner tank was removed to allow the system to cool. In the second field test demonstration, test runs #5 through #7 were conducted with the immersion heater disabled and the membrane cleaning time increased to approximately 2 hours. Run #5 has an initial temperature reading much higher than the ambient temperature. The heater was activated at the start of the run and approximately one hour later deactivated when testing without a heater had been decided. Table 5 shows the temperature readings for runs #5 through #7.

Table 5: Temperature Readings of the Membrane Cleaner Solution

Run	Membrane Cleaning Time (min)	Temperature of Membrane Cleaning Solution (°F)	Run	Membrane Cleaning Time (min)	Temperature of Membrane Cleaning Solution (°F)
5	0	125	6	0	76
	14	138		30	100
	15	140		78	140
	21	145	7	0	86
	25	150		25	112
	39	160		32	119
	50	168		53	140
-	-	90	165		

Figures 3, 4, and 5 show the effect of the recirculation pump on the temperature of the membrane cleaning solution per minute of membrane cleaning time for runs #5, #6, and #7. The linear relationship between temperature and time showed slopes of 0.87 for Run #5, 0.82 for Run #6, and 0.79 for Run #7. The three runs averaged a temperature rise of 0.83 °F per minute of membrane cleaning time, indicating that heating the membrane cleaner solution could be accomplished without the immersion heater.

Figure 3: Temperature Rise of Membrane Cleaning Solution, Run 5

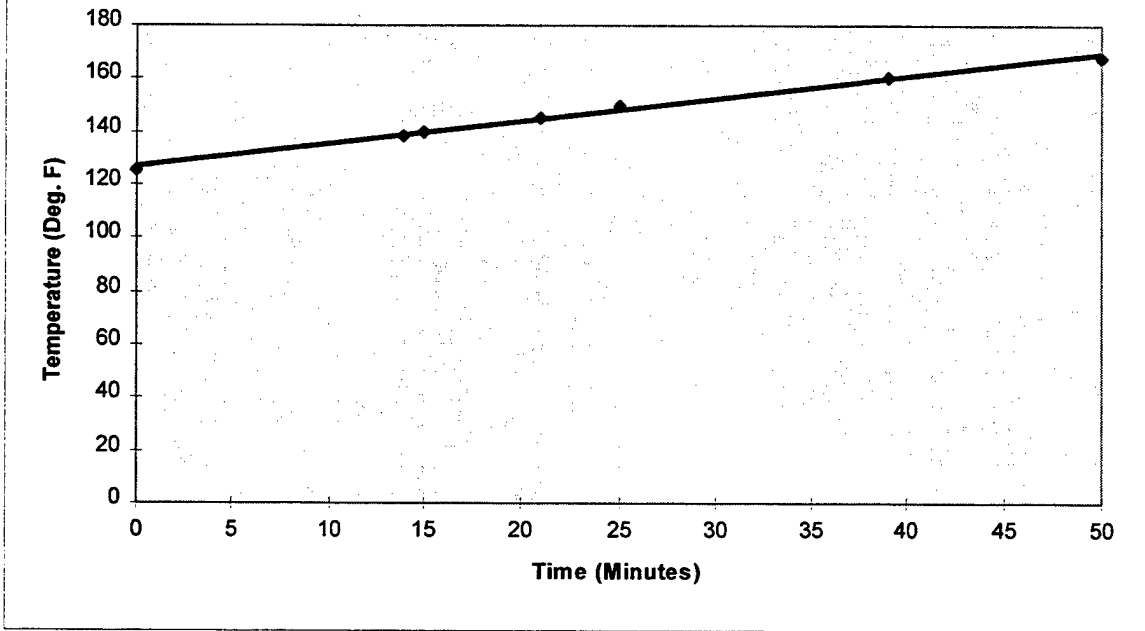
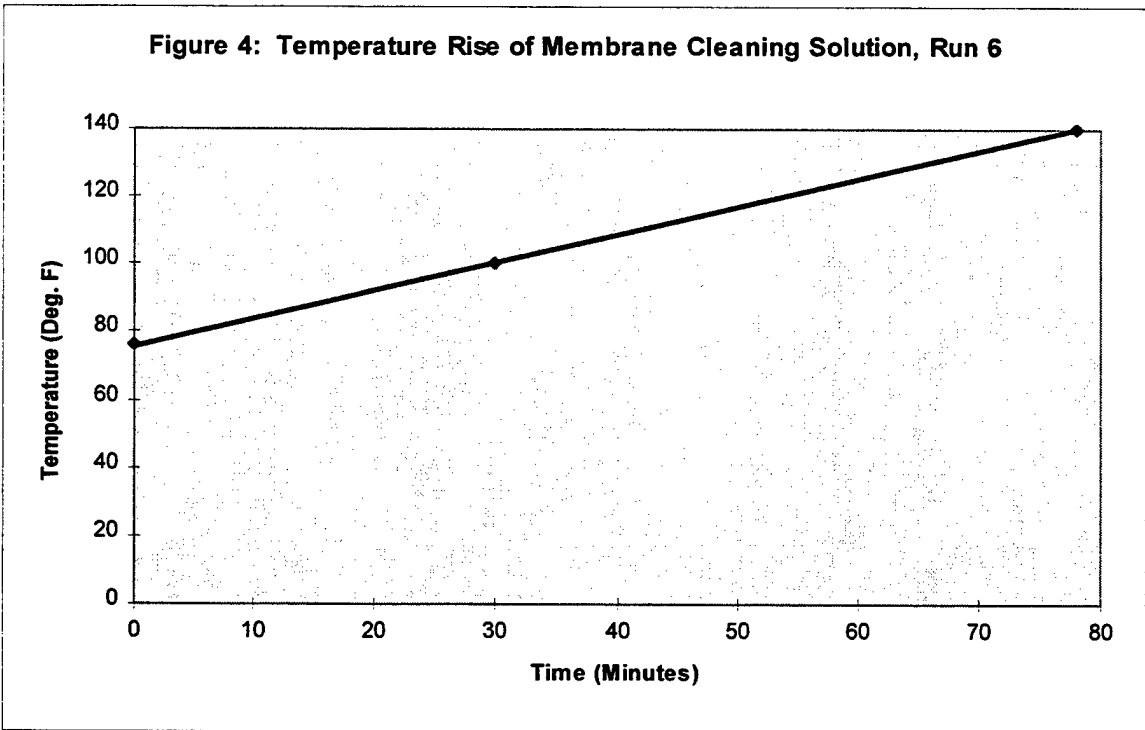
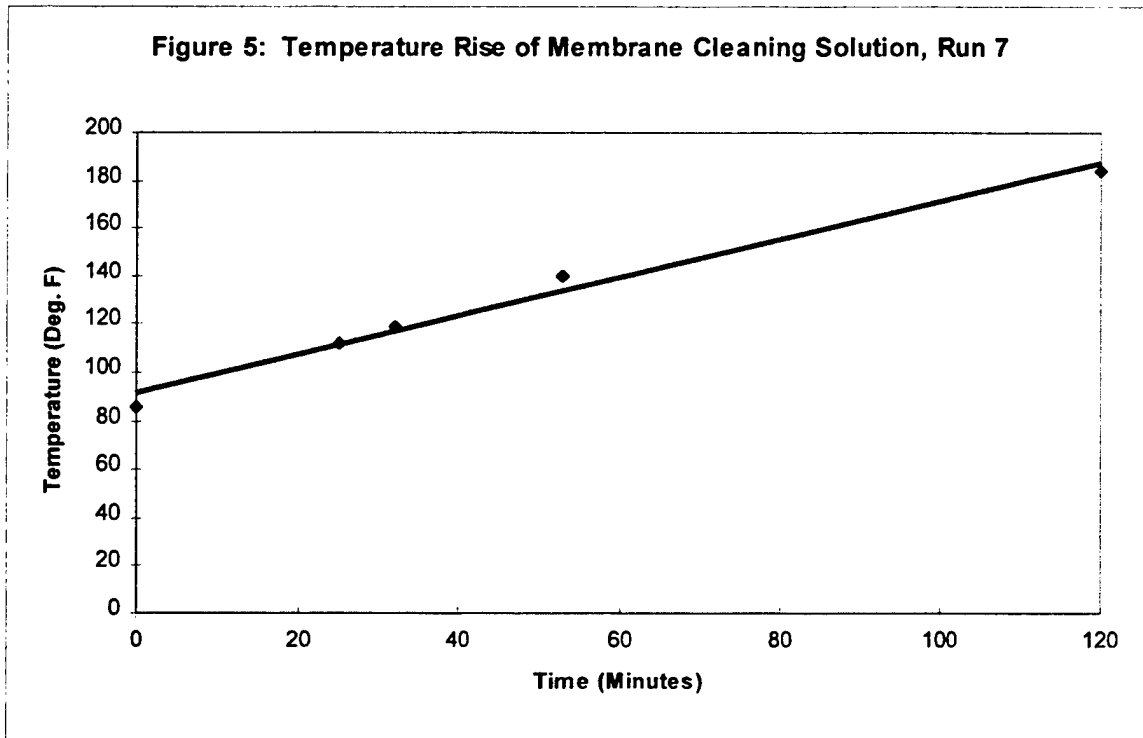


Figure 4: Temperature Rise of Membrane Cleaning Solution, Run 6





8.4 Analytical Test Results

8.4.1 pH

The following table presents the pH analysis for the first four test runs.

Table 6: pH Results For First Field Demonstration Test

Run	Feed	Permeate	Retentate	Rinse Water	Membrane Cleaner Solution
# 1					
Prerun	10.0	-	-	8.9	12.2
Postrun	-	9.9	9.9	12.2	12.6
# 2					
Prerun	9.9	-	-	11.7	12.6
Postrun	-	9.9	9.9	11.8	12.1
# 3					
Prerun	10.1	-	-	5.1	10.7
Postrun	-	10.0	10.0	9.6	9.8
# 4					
Prerun	10.0	-	-	9.6	9.8
Postrun	-	10.0	10.0	9.6	9.8

The pH values for each alkaline cleaner test run were virtually unchanged indicating: 1) that the membrane had no effect on the pH of the test solutions, 2) the amounts of oils and greases removed from the solution or concentrated in the solution had no noticeable effect on the pH of the various streams. The rinse water post run samples showed an increase in pH from the pre-run values indicating that there was some entrainment of the membrane cleaner solution into the rinse tank. However, there is negligible effect of this rinse water on the permeate as indicated by comparing the feed and permeate pH values which were the same in runs #2 and #4 and varied by 0.1 in runs #1 and #3.

8.4.2 Oil and Grease

The results of the oil and grease analysis for the two cleaner solutions are presented in the following two tables:

Table 7: Laboratory Analysis of Oil and Grease For First Field Demonstration Test

Run	Feed (mg/L)	Permeate (mg/L)	Retentate (mg/L)	Rinse Water (mg/L)	Membrane Cleaner Solution (mg/L)
# 1					
Prerun	640	-	-	3.8	12
During Run		180			
Postrun	-		11,000	1,300	1,400
# 2					
Prerun	520	-	-	640	1,400
During Run		110			
Postrun	-		13,000	4,100	7,500
# 3					
Prerun	490	-	-	39	520
During Run		110			
Postrun	-		12,000	810	2,700
# 4					
Prerun	500	-	-	810	2,700
During Run		60			
Postrun	-	-	11,000	1,200	3,600

Table 8: Laboratory Analysis of Oil and Grease For The Second Field Demonstration Test

Run	Sample	Feed (mg/L)	Permeate (mg/L)	Retentate (mg/L)
# 5	1	2,100	120	18,000
# 6	1	3,700	1,500	38,000
	2	6,400	570	-
	3	-	1,000	-
# 7	1	3,600	1,100	22,000
	2	-	820	-
	3	-	830	-

Conventionally, EPA Standard Methods 413.1 and 418.1 are used to determine oil and grease concentrations. The above values for oil and grease must be carefully examined due to the background interference inherent in the method of analysis, presumably caused by the presence of solvent-extractable organics in the cleaner in the form of surfactants and additives, aside from the oil and grease contaminants in the solutions measured. According to the manufacturer of the alkaline cleaner used in the first field test, Ultraclean SP contains 7.95 % organics by weight. None of the organics are considered volatile by testing using EPA Method 24. According to the manufacturer of the alkaline cleaner used in the second field demonstration test, Hotze Tubmate General Purpose Liquid, contains 6% (by weight) total organic material. Of the total organic material, 2% contains volatile organic compounds (VOCs). Considering that this spent cleaner had been used frequently for a minimum of one year and in one case two years, the VOCs would have completely evaporated leaving 4% of organic material in the alkaline cleaner. A total of 90 gallons of spent Hotze Tubmate were collected from 4 different aqueous parts washers. Assuming the manufacturer's recommended dilution factor of 4 fluid ounces of alkaline cleaner per gallon of water, a total of 2.81 gallons of cleaner were used to make up the original baths. Of this amount, 4 % (0.11 gallons) is considered to be the remaining organic material (0.125% of the total 90 gallons collected). Correcting the drag out of organic surfactants that occurs over high usage of the cleaner, the total hydrocarbon content in the form of surfactants/additives is estimated to be negligible compared to the hydrocarbon content in the form of oil and grease. Therefore it is reasonable to assume that the above analytical results in Table 8 are representative of the oil and grease content found in the collected samples. The results in Table 7 are also assumed to be representative oil and grease samples due to the surfactant drag out factor.

Table 9 shows the percent decrease of oil and grease in the alkaline cleaner permeate and the concentration factor of the retained waste end product for all the test runs. The percent decrease indicates the proportion of oil and grease removed from the feed by the membrane and is calculated by subtracting the permeate value from the feed value and dividing the difference by the feed value and multiplying by 100. The oil and grease concentration factor indicates the degree of concentration of oil and grease in the waste end product compared to the original feed. The factor shows that the contaminants were transported into a much more concentrated form. This factor is equal to the concentrate value divided by the feed value. The test run samples showed fairly consistent results for both field demonstration tests. In the first field demonstration test, runs #1 through #4, single samples were collected for the feed, permeate, and retentate streams. The feed, permeate, and retentate values for the four runs ranged from 490 to 640 mg/L, 60 to 180 mg/L, and 11,000 to 13,000 mg/L respectively. The feed, permeate, and retentate values averaged 537.5 mg/L, 115 mg/L, and 11,750 mg/L respectively. The percent decrease of oil and grease ranged from 71.88 % to 88.00 % and averaged 79.07 %. The concentration factor ranged from 17.19 to 25.00 and averaged 22.71.

Table 9: Oil and Grease Removal

Run	Sample	Feed (mg/L)	Permeate (mg/L)	Retentate (mg/L)	Percent Decrease of O&G In Permeate (%)	Concentration Factor
#1	1	640	180	11,000	71.88	17.19
#2	1	520	110	13,000	78.85	25.00
#3	1	490	110	12,000	77.55	24.50
#4	1	500	60	11,000	88.00	22.00
#5	1	2,100	120	18,000	94.29	8.57
#6	1	3,700	1,500	38,000	79.74*	7.52
	2	6,400	570	-		
	3	-	1,000	-		
#7	1	3,600	1,100	22,000	74.54*	6.11
	2	-	820	-		
	3	-	830	-		

* Based on averaged feed and permeate values.

In the second field demonstration test, runs #5 through #7, one to three samples were collected from the three streams. The feed, permeate, and retentate values ranged from 2,100 to 6,400 mg/L, 120 to 1,500 mg/L, and 18,000 to 38,000 mg/L respectively. The feed, permeate, and retentate values averaged 3,950 mg/L, 848.5 mg/L, and 26,000 mg/L respectively. The percent decrease of oil and grease ranged from 74.54 % to 94.29 % and averaged 82.86 %. The concentration factor ranged from 6.11 to 8.57 and averaged 7.40.

Table 10 presents the mass balance analysis for the second field demonstration test. Runs #5 through #7, showed a difference between the theoretical and actual feed values of less than 15 percent. The difference ranged from 3.88 to 14.75 percent and averaged 11.05 percent, indicating consistent results. A mass balance analysis was not performed on runs #1 through #4 due to inconsistent flow and volume readings resulting from start up problems. The problems encountered included power interruptions, membrane fouling, and timer adjustments which affected the accuracy of the flow controls. This prevented an accurate determination of the mass of oil and grease in the retentate.

Table 10: Mass Balance Analysis of Oil And Grease For Second Field Test

RUN	FEED (Actual)	PERMEATE	RETENTATE	FEED (Theoretical)	Percent Difference (%)
RUN 5					
Volume (L)	339.33	294.85	44.47		
Oil and Grease (mg/L)	2,100	120	18.000		
Oil and Grease (mg)	712,583	35,382	800,527	835,910	-14.75
RUN 6					
Volume (L)	388.08	343.68	44.40		
Oil and Grease (mg/L)	5,050*	1,023*	38.000		
Oil and Grease (mg)	1,959,784	351,697	1,687,126	2,038,823	-3.88
RUN 7					
Volume (L)	421.08	376.61	44.47		
Oil and Grease (mg/L)	3,600	917*	22,000		
Oil and Grease (mg)	1,515,892	345,224	978,422	1,323,646	+14.52

* Averaged value from multiple samples collected.

8.4.3 Membrane Cleaner Solution

One of the objectives of the field testing was to determine the number of times the membrane cleaner solution could be reused before it became ineffective as indicated by diminished permeate flowrates. The membrane cleaning solution, used for all but the first two test runs, was comprised of mixing approximately 8 oz. of LiquiGel Cascade Dishwashing Detergent in 25 gallons of deionized water. Fresh batches of membrane cleaner solutions were used on the 1st, 3rd, 5th, and 7th runs. The membrane cleaner solutions were changed out prematurely in order to correct problems associated with actuated valves and to perform other system modifications. It is estimated that the membrane cleaner solution can typically be reused a minimum of 6-7 times before it will become ineffective, however, reuse is dependent upon the degree of contamination of the alkaline cleaner processed. Processing spent alkaline cleaner heavily loaded with sludge would necessitate a more frequent changeout of membrane cleaner solution.

In the final run, 63 gallons of used membrane cleaner solution, Lemon Cascade LiquiGel (Automatic Dishwashing Detergent) was processed through the system to investigate the capability of the unit to minimize the volume of used membrane cleaning solution. The recycling process generated 51.20 gallons of permeate and 11.75 gallons of retentate. A total of seven samples were collected from the feed, permeate, and retentate streams and analyzed for oil and grease using EPA Method 413.1. Table 11 presents the sampling results from the membrane cleaner solution run.

Table 11: Laboratory Analysis of Oil and Grease in the Used Membrane Cleaner Solution

Run	Sample	Feed (mg/L)	Permeate (mg/L)	Retentate (mg/L)
# 8	1	500	31.00	7,500
	2	390	6.30	7,300
	3	-	16.00	-

The feed, permeate, and retentate values for oil and grease found in the used Lemon Cascade LiquiGel ranged from 390 to 500 mg/L, 6.30 to 31 mg/L, and 7,500 to 7,300 mg/L respectively. The feed, permeate, and retentate values averaged 445 mg/L, 17.77 mg/L, and 7,400 mg/L respectively. The percent decrease of total hydrocarbon content in the form of surfactants, additives, and oil and grease averaged 96.01 % and the concentration factor averaged 16.63. The above oil and grease values in Table 11 may also include the hydrocarbon content present in the detergent's formula which would cause background interference in the method of analysis due the extractable hydrocarbons as previously mentioned in Section 8.4.2. Since the percentage of hydrocarbons in the Cascade solution is considered proprietary information by the manufacturer and the membrane's rejection rate of the surfactants in the Cascade solution is unknown, a mass balance could not be performed. Nonetheless, the above results indicate that the filtration system is effective in removing oil and grease from the membrane cleaner solution. Further investigation may show the possibility of using the filtration system to recycle the membrane cleaner solution.

9.0 FURTHER CONSIDERATIONS

9.1 Volumetric Reduction of Hazardous Waste

The system was designed to service the Better Engineering aqueous parts washers, models F-4000-P and F-3000 with sump capacities of 140 and 75 gallons respectively, typically procured through the Navy's Pollution Prevention Procurement Program. Processing at maximum capacity of 140 gallons, the unit yields a 92% volumetric reduction in hazardous waste for a single run. If processing at maximum capacity and disposing the membrane cleaner solution after the seventh use as recommended, the unit yields an 88% volumetric reduction of total hazardous waste generated. To service parts washers with larger sump capacities the system can also be modified by increasing the size of the permeate tank or by connecting an additional permeate tank. This would result in greater volumetric reductions but may require the system to be used in a stationary position.

9.2 Membrane Storage

U.S. Filter, the manufacturer of the ceramic membrane, recommended the membrane be stored wet at all times. However, the manufacturer's experience with ceramic

membranes was limited to continual usage in dedicated systems and did not include periodic usage of a mobile system. Therefore, guidance could not be offered with respect to periodic usage of ceramic membranes. In the first field demonstration test the membrane was stored wet after each use. However, after the system was returned for in-house modifications, the membrane was afterwards stored dry for periods ranging between 8 and 19 days with no noticeable decrease in permeate flowrate. It appears that the membrane can be stored dry between usage without detrimental effect provided that it is properly cleaned and rinsed after each use.

10.0 CONCLUSIONS AND RECOMMENDATIONS

The objectives of the field demonstration test program were to: 1) determine the ability of the recycling system to remove oil and grease from a spent alkaline cleaner and from accumulated spent membrane cleaning solution, 2) determine membrane fouling tendencies by conducting clean water permeability tests and by monitoring permeate flowrates, 3) determine and evaluate the most effective membrane cleaning process (i.e. duration of membrane self-cleaning process, membrane cleaner solution, temperature, flow configuration), 4) determine the number of times the membrane cleaning solution can be reused before rendered ineffective, 5) determine the system's utility requirements for the development of an operating cost estimate.

The demonstrated test results and conclusions are summarized below:

- Analytical test results showed that compared to the feed stream, the concentration of oil and grease in the permeate was reduced by 79% in the first field demonstration tests and by 83% in the second field demonstration tests. Thus, the system is effective in removing oil and grease from the tested spent alkaline cleaners.
- Comparing the final CWP value, measured at 2.5 gpm at 143 °F, to the benchmarked CWP value, measured at 2.3 gpm at 145 °F, the membrane showed no decline in permeability. This indicates that the systems cleaning regime (the Cascade LiquiGel detergent circulated through the membrane at a minimum of 140 °F for an hour) maintains membrane permeability.
- Based on the performance of the membrane's self cleaning regime and the CWP values measured throughout testing, it is estimated that the membrane cleaner solution could typically be reused 6-7 times before rendering it inadequate. Processing a spent alkaline cleaner, heavily contaminated with sludge, may necessitate a more frequent changeout of membrane cleaner solution.
- Test runs conducted without the use of the immersion heater showed a temperature rise, via the heat generated by the recirculation pump, of close to 1 °F per minute of membrane cleaning time. Thus, heating the membrane cleaning solution can be effectively accomplished without the use of the immersion heater.

- The membrane showed no evidence of fouling after periods of dry storage. Therefore, the membrane can be stored dry without detrimental effect between usage provided that it is properly cleaned and rinsed after each use.
- The system can reduce the volume of hazardous waste generated from alkaline cleaning by 88 percent. This is based on operating the system at a full capacity of 140 gallons and using the membrane cleaner solution seven times.

The following recommendations are based on the demonstrated test results:

- A non-sudsing type of detergent is recommended for use as the membrane cleaning solution.
- Before the effectiveness of recycling spent membrane cleaning solution can be fully determined, the hydrocarbon content of the detergent and the membrane's rejection rate of the detergent's hydrocarbon components needs to be established.
- Although 964 gallons of spent alkaline cleaner were processed through the system during the two field tests, additional testing would permit the verification of the long term efficiency of the self cleaning regime.
- Although the heat generated by the recirculation pump, of close to 1 °F per minute of membrane cleaning time, can be controlled by a timer, it is recommended that the immersion heater be removed from the original design and the system rewired to terminate the membrane cleaning mode once the membrane cleaning solution reaches 180 °F.
- Before rendering the membrane cleaner solution ineffective after the sixth or seventh use, it would be desirable that this be verified with additional testing.

11.0 REFERENCES

Chen, A.S.C., E. H. Drescher, A. J. Pollack, L Wang. 1997. *Using Ceramic Crossflow Filtration To Recycle Spent Nonionic Aqueous-Based Metal Cleaning Solution: Pilot-Scale Testing*, CR 96.004. Report Prepared for Naval Facilities Engineering Service Center, Port Hueneme, CA.

Chen, A.S.C., E. H. Drescher, B. Sass, D. E. Giammer, T. Hutson. A. J. Pollack. 1996. *Using Ceramic Crossflow Filtration To Recycle Spent Nonionic Aqueous-Based Metal Cleaning Solutions*, CR 97.004. Report Prepared for Naval Facilities Engineering Service Center, Port Hueneme, CA.

APPENDIX A
MASS BALANCE CALCULATIONS

Mass balance calculations are based on analytical results for oil and grease concentrations in samples collected during Run #6.

$$\text{Average Feed Concentration} = (3700 \text{ (mg/L)} + 6400 \text{ (mg/L)}) / 2 = 5050 \text{ (mg/L)}$$

$$\text{Average Permeate Concentration} = (1000 \text{ (mg/L)} + 570 \text{ (mg/L)} + 1500 \text{ (mg/L)}) / 3 = 1023.33 \text{ (mg/L)}$$

$$\text{Average Concentrate Concentration} = 38000 \text{ (mg/L)}$$

$$\text{Feed Volume} = 102.53 \text{ (gal)} * 3.785 \text{ (L/gal)} = 388.08 \text{ (L)}$$

$$\text{Permeate Volume} = 90.8 \text{ (gal)} * 3.785 \text{ (L/gal)} = 343.68 \text{ (L)}$$

$$\text{Concentrate Volume} = 11.73 \text{ (gal)} * 3.785 \text{ (L/gal)} = 44.40 \text{ (L)}$$

$$\text{Amount of Oil and Grease In Feed (Experimental Value)} = 5050 \text{ (mg/L)} * 388.08 \text{ (L)} = 1959784 \text{ (mg)}$$

$$\text{Amount of Oil and Grease In Permeate} = 1023.33 \text{ (mg/L)} * 343.68 \text{ (L)} = 351697 \text{ (mg)}$$

$$\text{Amount of Oil and Grease In Concentrate} = 38000 \text{ (mg/L)} * 44.40 \text{ (L)} = 1687126 \text{ (mg)}$$

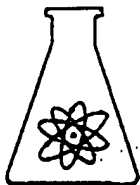
$$\begin{aligned} \text{Amount of Oil and Grease In Feed (Theoretical Value)} &= 351697 \text{ (mg)} + 1687126 \text{ (mg)} \\ &= 2038823 \text{ (mg)} \end{aligned}$$

$$\begin{aligned} \text{Percent Difference Of Mass Of Oil and Grease In Feed} \\ &= (\text{Theoretical Value} - \text{Experimental Value}) / \text{Theoretical Value} * 100 \\ &= (2038823 \text{ (mg)} - 1959784 \text{ (mg)}) / 2038823 \text{ (mg)} * 100 \\ &= 3.88 \% \end{aligned}$$

$$\text{Oil and Grease Concentration Factor} = 1687126 \text{ (mg)} / 1959784 \text{ (mg)} = 7.52$$

$$\begin{aligned} \text{Percent Decrease of Oil and Grease In Permeate} \\ &= (1959784 \text{ (mg)} - 351697 \text{ (mg)}) / 1959784 \text{ (mg)} * 100 \\ &= 79.74 \% \end{aligned}$$

APPENDIX B
MATERIAL SAFETY DATA SHEETS
FOR FIELD TESTING OF THE
MOBILE ALKALINE CLEANER RECYCLER

**DURA-CHEM, INC.**

1060-B ORTEGA WAY
PLACENTIA, CA 92670
(714) 630-4100 (800) 447-5008
FAX (714) 630-1647

PRODUCT INFORMATION BULLETIN

C.N. # 1-7

ULTRA CLEAN SP**Introduction**

ULTRA CLEAN SP is a water based detergent, designed for spray washing of metal parts in a recirculating parts washer. It is useful for removing stubborn grease, oil and grime. Replaces solvent degreasers. Rinsing is usually not required. Formulated to prevent rust.

Features:

No volatile organic compounds
Water based
No Hazardous fumes
Easily waste treatable

Exceptional cleaning

Benefits:

Not regulated by A.Q.M.D.
Will not burn
Worker Safety
Normal waste treatment methods
No foam above 100 F

Operating Data:

Time: As required
Temperature: 130 F - 160 F
Concentration: 20-30% by volume

Bath Makeup:

1. Fill reservoir 2/3 full with water.
2. Add detergent and mix.
3. Finish fill tank to working level with water.
4. Turn on heat.

Safety Procedures:

Read, understand and follow all safety procedures detailed in Material Safety Data sheet provided. Do not work with product until you understand the safety requirements.

MATERIAL SAFETY DATA SHEET

TRADE NAME: ULTRA CLEAN SP.

MANUFACTURER'S NAME: DURA-CHEM, INC.

ADDRESS: 1060-B ORTEGA WAY
PLACENTIA, CA. 92670

PHONE NUMBER FOR ADDITIONAL INFORMATION: (714) 630-4100

DATE PREPARED OR REVISED: JULY 13, 1995

NAME OF PREPARER: JOHN W. HASSELL

II. HAZARDOUS INGREDIENTS

COMPONENTS/IDENTIFY INFORMATION:	1	OSHA/PEL	ACGIH/TLV	CAS#
DETERGENT/ETHOXYLATES	1-3	N/E	N/E	N/E
BORAX	1-3	N/E	1 mg/m ³ TWA	1303-96-4

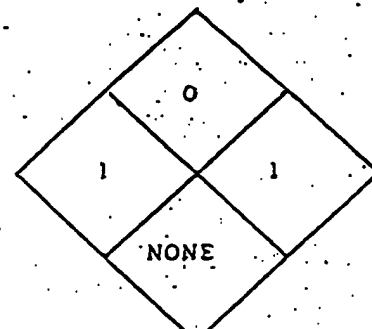
SPECIAL NOTES:

PEL AND TLV ARE APPLICABLE TO AIRBORN MIST. GENERATION OF MIST WOULD NOT BE EXPECTED THROUGH NORMAL USE OF THIS PRODUCT.

NPPA HAZARD RATING
Flammability (Red)

Health (Blue)

Reactivity (Yellow)



Special Hazard

Not a required category

N= Not Applicable N/E= Not Established
P= Not Found

4=EXTREME
3=HIGH
2=MODERATE
1=SLIGHT
0=INSIGNIFICANT

III. PHYSICAL PROPERTIES

Vapor density (air=1): N/E (Similar to water)
Specific gravity: Greater than water
Solubility in water: Complete (Material is a water-based detergent)
Vapor pressure mmHg at 20 degree C: N/E (Similar to water)
Melting point or range, degree F: 32°F
Boiling point or range, degree F: 212°F
Evaporating rate (butyl acetate=1): N/E (Similar to water)
Appearance and odor: pale yellow liquid, slight sharp odor, slight haze. pH (20% in water) 9.5-10

HOW TO DETECT THIS SUBSTANCE* (warning properties of substance as a gas, vapor, dust or mist)

IV. FIRE AND EXPLOSION

Flash point, degree F (give method) N/A
Auto ignition temperature, degree F N/A
Flammable limits in air, volume %: N/A
Lower (LEL) _____ Upper (UEL) _____

Fire extinguishing materials:

water spray carbon dioxide _____ other
 foam dry chemical

Special fire fighting procedures: Material is a water-solution and will not burn under ordinary conditions. Evaporation of the water will leave some combustible material, which will liberate traces of sulfur and phosphorus oxides and possibly carbon monoxide if somehow ignited. Wear self-contained breathing apparatus and protective clothing if fighting fire.

Unusual fire and explosion hazards: NONE

V. HEALTH HAZARD INFORMATION

SYMPTOMS OF OVER EXPOSURE FOR EACH POTENTIAL ROUTE OF EXPOSURE.

Inhaled: Mist irritating to nose, lungs and breathing passages.
Not expected to be a potential route of exposure.

Contact with skin or eyes: Minor irritation expected.
Skin irritation from defatting expected.

Absorbed through skin: Product contains small amount of Borax which can be absorbed through damaged skin. Prolonged or repeated exposure could cause harmful effect.

Swallowed: Not expected to be a potential route of exposure.
Gastrointestinal irritation, nausea, vomiting, diarrhea and possible Borax poisoning.

HEALTH EFFECTS OR RISKS FROM EXPOSURE.

(Explain in lay terms. Attach extra page if more space is needed.)

Acute: Eyes - Causes burning and irritation. Skin irritation.

Chronic: As with most detergents, contact with the eyes will cause immediate irritation. Prolonged contact with bare skin can cause defatting, drying, chapping and possible skin absorption.

FIRST AID: EMERGENCY PROCEDURES

Eye contact: Wash immediately with clean water for fifteen minutes. Get medical attention. Lift upper and lower lids when flushing.

Skin contact: Wash with clean water for 15 or more minutes. Remove and launder contaminated clothing before re-use.

Inhaled: Remove from area where product mist is present. Restore breathing if necessary. Seek medical attention at once.

Swallowed: If victim awake, give milk or water and induce vomiting. Get medical attention at once.

V. HEALTH HAZARD INFORMATION CONTINUED

SUSPECTED CANCER AGENT?

NO: This product's ingredients are not found in the lists below.

YES: FEDERAL OSHA NTP IARC

California employers using CAL/OSHA regulated carcinogens must register with CAL/OSHA. The CAL/OSHA and FEDERAL OSHA carcinogens lists are similar.

MEDICAL CONDITIONS AGGRAVATED BY EXPOSURE:

Dry or chapped skin would be aggravated by excessive contact with product. No other medical conditions known that would be aggravated by material.

VI. REACTIVITY DATA

Stability: Stable Unstable

Conditions to avoid: Strong acids.

Incompatibility(material to avoid): Strong oxidizing agents, acids.

Hazardous decomposition products(including combustion products):

Oxides of carbon, sulfur, phosphorus, and sulfuric and phosphoric acids.

Hazardous polymerization: May occur Will not occur

Additional notes:

VII. SPILL, LEAK AND DISPOSAL PROCEDURES

Spill response procedures (include employee protection measures):
Spills can be diked or otherwise contained and collected for waste disposal. Small amounts can be absorbed in inert material for disposal. Wear rubber boots, aprons, gloves and eye protection.

Preparing wastes for disposal:
(container types, neutralization, etc.)

Store in DOT-approved waste containers. Keep out of sewers, storm drains, surface waters and soils.

NOTE: Dispose of all waste in accordance with federal, state and local regulations.

VIII. SPECIAL HANDLING INFORMATION

Ventilation and engineering controls:

Normal room ventilation

Respiratory protection (type):

Normally none required

Eye protection (type):

Splash-proof chemical goggles or full face shield

Gloves (specify material):

Rubber gloves

Other clothing and equipment:

Rubber apron, long sleeved shirt

VIII, SPECIAL HANDLING INFORMATION (CONT'D)

Work practices, hygienic practices:

Remove and wash contaminated clothing before reusing. Remove even minor spills from work area.

Other handling and storage requirements:

Do not store in aluminum, Copper or their alloys

Protective measures during maintenance of contaminated equipment:

Wear recommended eye and skin protection

IX. SARA TITLE III SECTION 313

As required by Section 313 of SARA Title III of 1988 and 40 CFR part 372, this product contains the following items in a reportable quantity. Do not detach or separate this section from the others sections of this MSDS. Copying and redistribution of this MSDS shall include the copying and redistribution of this notification.

INGREDIENT	CAS#	WT%
------------	------	-----

NONE

OTHER REGULATORY INFORMATION

THIS PRODUCT CONTAINS THE FOLLOWING CHEMICAL(S) CONSIDERED BY THE STATE OF CALIFORNIA'S SAFE DRINKING WATER AND TOXIC ENFORCEMENT ACT OF 1986 (PROPOSITION 65) AS CAUSING CANCER OR REPRODUCTIVE TOXICITY AND FOR WHICH WARNING ARE NOW REQUIRED.

CHEMICAL	CAS NO.	WT
----------	---------	----

NONE

DOD Hazardous Materials Information System
DoD 6050.5-LR
AS OF July 1996

Proprietary Version - For U.S. Government Use Only

FSC: 6810

NIIN: 00N014604

Manufacturer's CAGE: 60928

Part No. Indicator: A

Part Number/Trade Name: SODIUM HYDROXIDE PELLETS, 99.99%, (SUP DAT)

=====
Nuclear Water Data
=====

This is not a Nuclear Water Chemical NIIN.

=====
Standard PMS Identification Number Data
=====

This is not a Standard PMS Identification Number NIIN.

=====
General Information
=====

Item Name:

Company's Name: ALDRICH CHEMICAL COMPANY

Company's Street:

Company's P. O. Box: 355

Company's City: MILWAUKEE

Company's State: WI

Company's Country: US

Company's Zip Code: 53201

Company's Emerg Ph #:

Company's Info Ph #: 414-273-3850

Distributor/Vendor # 1:

Distributor/Vendor # 1 Cage:

Distributor/Vendor # 2:

Distributor/Vendor # 2 Cage:

Distributor/Vendor # 3:

Distributor/Vendor # 3 Cage:

Distributor/Vendor # 4:

Distributor/Vendor # 4 Cage:

Safety Data Action Code:

Safety Focal Point: N

Record No. For Safety Entry: 001

Tot Safety Entries This Stk#: 001

Status: SMJ

Date MSDS Prepared: 29MAY90

Safety Data Review Date: 27MAR91

Supply Item Manager:

MSDS Preparer's Name:

Preparer's Company:

Preparer's St Or P. O. Box:

Preparer's City:

Preparer's State:

Preparer's Zip Code:

Other MSDS Number:

Report for NIIN: 00N014604

MSDS Serial Number: BKLDG
Specification Number:
Spec Type, Grade, Class:
Hazard Characteristic Code: C2
Unit Of Issue:
Unit Of Issue Container Qty:
Type Of Container:
Net Unit Weight:
NRC/State License Number:
Net Explosive Weight:
Net Propellant Weight-Ammo:
Coast Guard Ammunition Code:

=====

Ingredients/Identity Information

=====

Proprietary: NO
Ingredient: SODIUM HYDROXIDE (SARA III)
Ingredient Sequence Number: 01
Percent: 99.99
Ingredient Action Code:
Ingredient Focal Point: N
NIOSH (RTECS) Number: WB4900000
CAS Number: 1310-73-2
OSHA PEL: 2 MG/M3
ACGIH TLV: C 2 MG/M3; 9293
Other Recommended Limit: N/K

=====

Physical/Chemical Characteristics

=====

Appearance And Odor: WHITE PELLETS. ODORLESS (FP N).
Boiling Point: 2534F,1390C
Melting Point: 604F,318C
Vapor Pressure (MM Hg/70 F): <18 @ 20C
Vapor Density (Air=1): >1
Specific Gravity: 2.130
Decomposition Temperature: N/K
Evaporation Rate And Ref: NOT APPLICABLE
Solubility In Water: 40G IN 100 ML @ 0C
Percent Volatiles By Volume: N/K
Viscosity:
pH: N/K
Radioactivity:
Form (Radioactive Matl):
Magnetism (Milligauss): N/P
Corrosion Rate (IPY): N/K
Autoignition Temperature:

=====

Fire and Explosion Hazard Data

=====

Flash Point: NONCOMBUSTIBLE
Flash Point Method: N/P
Lower Explosive Limit: N/A
Upper Explosive Limit: N/A

Report for NIIN: 00N014604

Extinguishing Media: USE EXTINGUISHING MEDIA APPROPRIATE TO SURROUNDING FIRE CONDITIONS. DO NOT USE WATER.
Special Fire Fighting Proc: WEAR NIOSH/MSHA APPROVED SCBA AND PROTECTIVE CLOTHING TO PREVENT CONTACT WITH SKIN AND EYES.
Unusual Fire And Expl Hazrds: EMITS TOXIC FUMES UNDER FIRE CONDITIONS.

=====
Reactivity Data
=====

Stability: YES
Cond To Avoid (Stability): ABSORBS CO*2 FROM AIR. WATER (FP N).
Materials To Avoid: STRONG OXIDIZING AGENTS, STRONG ACIDS, ORGANIC MATERIALS, CHLORINATED SOLVENTS & ORGANIC PEROXIDE.
Hazardous Decomp Products: NATURE OF DECOMPOSITION PRODUCTS NOT KNOWN.
Hazardous Poly Occur: NO
Conditions To Avoid (Poly): NOT RELEVANT

=====
Health Hazard Data
=====

LD50-LC50 Mixture: LD50:(IPR,MUS) 40 MG/KG.
Route Of Entry - Inhalation: YES
Route Of Entry - Skin: YES
Route Of Entry - Ingestion: NO
Health Haz Acute And Chronic: ACUTE: HARMFUL IF SWALLOWED, INHALED OR ABSORBED THRU SKIN. MATL IS EXTREMELY DESTRUCTIVE TO TISS OF MUC MEMB & UPPER RESP TRACT, EYES & SKIN. CAUSES SEV BURNS. INHAL MAY BE FATAL AS A RESULT OF SPASM, INFLAM & EDEMA OF LARYNX & BRONCHI, CHEM PNEUM & PULM EDEMA.
Carcinogenicity - NTP: NO
Carcinogenicity - IARC: NO
Carcinogenicity - OSHA: NO
Explanation Carcinogenicity: NOT RELEVANT
Signs/Symptoms Of Overexp: BURNING SENSATION, COUGHING, WHEEZING, LARYNGITIS, SHORTNESS OF BREATH, HEADACHE, NAUSEA AND VOMITING.
Med Cond Aggravated By Exp: NONE SPECIFIED BY MANUFACTURER.
Emergency/First Aid Proc: EYES & SKIN: IMMED FLUSH W/COPIOUS AMTS OF WATER FOR AT LEAST 15 MIN WHILE REMOVING CONTAM CLTHG & SHOES. WASH BEFORE REUSE. DISCARD CONTAM SHOES. ASSURE ADEQ FLUSHING OF EYES BY SEP LIDS W/ FINGERS. INHAL: REMOVE TO FRESH AIR. IF NOT BRTHG GIVE ARTF RESP. IF BRTHG IS DFCLT, GIVE OXYGEN. CALL MD. INGEST: RINSE MOUTH W/WATER; DO NOT INDUCE VOMIT; DRINK 8-10 OZ WATER; CALL MD IMMED (FP N).

=====
Precautions for Safe Handling and Use
=====

Steps If Matl Released/Spill: EVAC AREA. WEAR NIOSH/MSHA APPROVED SCBA, RUBBER BOOTS & HEAVY RUBBER GLOVES. SWEEP UP, PLACE IN A BAG AND HOLD FOR WASTE DISPOSAL. VENTILATE AREA AND WASH SPILL SITE AFTER MATERIAL PICKUP IS COMPLETE.
Neutralizing Agent: NONE SPECIFIED BY MANUFACTURER.
Waste Disposal Method: SM QTYS: CAUTIOUSLY ADD TO LRG STIRRED EXCESS OF WATER. ADJUST PH TO NEUTRAL, SEPARATE ANY INSOLUBLE SOLIDS OR LIQUIDS & PACKAGE THEM FOR HAZ-WASTE DISP. FLUSH AQUEOUS SOLN DOWN DRAIN W/PLENTRY OF WATER. THE HYDROLYSIS & NEUTRALIZATION (SUPP DATA)
Precautions-Handling/Storing: DO NOT BREATHE DUST. KEEP TIGHTLY CLOSED.

Report for NIIN: 00N014604

STORE IN A COOL DRY PLACE.

Other Precautions: DO NOT GET IN EYES, ON SKIN AND CLOTHING. AVOID
PROLONGED OR REPEATED EXPOSURE. READILY ABSORBED THRU SKIN. TOXIC.
CORROSIVE. EXTREMELY HYGROSCOPIC. AIR SENSITIVE. CONT W/ALUMINUM, TIN &
ZINC LIBERATES HYDROGEN GAS. CONT WITH (SUPP DATA)

=====
Control Measures
=====

Respiratory Protection: WEAR APPROPRIATE NIOSH/MSHA APPROVED RESPIRATOR.
Ventilation: USE ONLY IN A CHEMICAL FUME HOOD.
Protective Gloves: CHEMICAL RESISTANT GLOVES.
Eye Protection: CHEM WORK GOGGLES, FACESHLD OPTL (FP N).
Other Protective Equipment: PROTECTIVE CLOTHING, FACESHIELD (8-INCH
MINIMUM), SAFETY SHOWER AND EYE BATH.
Work Hygienic Practices: WASH THOROUGHLY AFTER USE AND BEFORE EATING,
DRINKING, SMOKING OR USING SANITARY FACILITIES (FP N).
Suppl. Safety & Health Data: PART NO: SEMICONDUCTOR GRADE, 30657-6. WASTE
DISP METH: RXN MAY GEN HEAT & FUMES WHICH CAN BE CONTROLLED BY RATE OF
ADDN. DISPOSE OF I/A/W FEDERAL, STATE & LOCAL LAWS. OTHER PREC:
NITROMETHANE & OTHER SIMILAR NITRO CMPDS CAUSES FORMATION OF SHOCK
SENSITIVE SALTS.

=====
Transportation Data
=====

Transportation Action Code:
Transportation Focal Point: N
Trans Data Review Date: 91281
DOT PSN Code: NGU
DOT Symbol:
DOT Proper Shipping Name: SODIUM HYDROXIDE, SOLID
DOT Class: 8
DOT ID Number: UN1823
DOT Pack Group: II
DOT Label: CORROSIVE
DOT/DoD Exemption Number:
IMO PSN Code: NSX
IMO Proper Shipping Name: SODIUM HYDROXIDE, SOLID
IMO Regulations Page Number: 8225
IMO UN Number: 1823
IMO UN Class: 8
IMO Subsidiary Risk Label: -
IATA PSN Code: WSO
IATA UN ID Number: 1823
IATA Proper Shipping Name: SODIUM HYDROXIDE, SOLID
IATA UN Class: 8
IATA Subsidiary Risk Class:
IATA Label: CORROSIVE
AFI PSN Code: WSO
AFI Symbols:
AFI Prop. Shipping Name: SODIUM HYDROXIDE, SOLID
AFI Class: 8
AFI ID Number: UN1823
AFI Pack Group: II

Report for NIIN: 00N014604

AFI Label: CORROSIVE
AFI Special Prov:
AFI Basic Pac Ref: 12-7
MMAC Code:
N.O.S. Shipping Name:
Additional Trans Data:

=====
Disposal Data
=====

Disposal Data Action Code:
Disposal Data Focal Point:
Disposal Data Review Date:
Rec # For This Disp Entry:
Tot Disp Entries Per NSN:
Landfill Ban Item:
Disposal Supplemental Data:
1st EPA Haz Wst Code New:
1st EPA Haz Wst Name New:
1st EPA Haz Wst Char New:
1st EPA Acute Hazard New:
2nd EPA Haz Wst Code New:
2nd EPA Haz Wst Name New:
2nd EPA Haz Wst Char New:
2nd EPA Acute Hazard New:
3rd EPA Haz Wst Code New:
3rd EPA Haz Wst Name New:
3rd EPA Haz Wst Char New:
3rd EPA Acute Hazard New:

=====
Label Data
=====

Label Required: YES
Technical Review Date: 07JUN91
Label Date: 07JUN91
MFR Label Number:
Label Status: G
Common Name: SODIUM HYDROXIDE PELLETS
Chronic Hazard: N/P
Signal Word: DANGER!
Acute Health Hazard-None:
Acute Health Hazard-Slight:
Acute Health Hazard-Moderate:
Acute Health Hazard-Severe: X
Contact Hazard-None:
Contact Hazard-Slight:
Contact Hazard-Moderate:
Contact Hazard-Severe: X
Fire Hazard-None: X
Fire Hazard-Slight:
Fire Hazard-Moderate:
Fire Hazard-Severe:
Reactivity Hazard-None: X
Reactivity Hazard-Slight:

Report for NIIN: 00N014604

Reactivity Hazard-Moderate:

Reactivity Hazard-Severe:

Special Hazard Precautions: ACUTE:CAUSES SEVERE BURNS. DO NOT GET IN EYES, ON SKIN, OR ON CLOTHING. DO NOT BREATHE DUST. KEEP CONTAINER CLOSED. USE WITH ADEQUATE VENTILATION. WASH THOROUGHLY AFTER HANDLING. MAY BE FATAL IF INHALED. HARMFUL IF SWALLOWED, INHALED, OR ABSORBED THROUGH SKIN. CAUSES MUCOUS MEMBRANE, UPPER RESPIRATORY TRACT, EYE AND SKIN IRRITATION.

Protect Eye: Y

Protect Skin: Y

Protect Respiratory: Y

Label Name: ALDRICH CHEMICAL COMPANY

Label Street:

Label P.O. Box: 355

Label City: MILWAUKEE

Label State: WI

Label Zip Code: 53201

Label Country: US

Label Emergency Number:

Year Procured:

DOD Hazardous Materials Information System

DoD 6050.5-LR

AS OF July 1996

Proprietary Version - For U.S. Government Use Only

FSC: 6810

NIIN: 002372918

Manufacturer's CAGE: 81348

Part No. Indicator: A

Part Number/Trade Name: O-N-350

=====
General Information
=====

Item Name: NITRIC ACID

Company's Name: BOUGHT ACCORDING TO SPECIFICATION

Company's Street:

Company's P. O. Box:

Company's City:

Company's State:

Company's Country:

Company's Zip Code:

Company's Emerg Ph #:

Company's Info Ph #:

Distributor/Vendor # 1:

Distributor/Vendor # 1 Cage:

Distributor/Vendor # 2:

Distributor/Vendor # 2 Cage:

Distributor/Vendor # 3:

Distributor/Vendor # 3 Cage:

Distributor/Vendor # 4:

Distributor/Vendor # 4 Cage:

Safety Data Action Code:

Safety Focal Point: D

Record No. For Safety Entry: 010

Tot Safety Entries This Stk#: 012

Status:

Date MSDS Prepared: 01JAN85

Safety Data Review Date: 03APR81

Supply Item Manager: CX

MSDS Preparer's Name:

Preparer's Company:

Preparer's St Or P. O. Box:

Preparer's City:

Preparer's State:

Preparer's Zip Code:

Other MSDS Number:

MSDS Serial Number: BDLXS

Specification Number: O-N-350

Spec Type, Grade, Class:

Hazard Characteristic Code: C1

Unit Of Issue: BT

Unit Of Issue Container Qty: 80 FL OUNCES

Type Of Container: BOTTLE

Net Unit Weight: 7.75 LBS

Report for NIIN: 002372918

NRC/State License Number: N/R
Net Explosive Weight: N/R
Net Propellant Weight-Ammo: N/R
Coast Guard Ammunition Code:

=====
Ingredients/Identity Information
=====

Proprietary: NO
Ingredient: NITRIC ACID (SARA III)
Ingredient Sequence Number: 01
Percent: 61
Ingredient Action Code:
Ingredient Focal Point: D
NIOSH (RTECS) Number: QU5775000
CAS Number: 7697-37-2
OSHA PEL: 2 PPM/4 STEL
ACGIH TLV: 2 PPM/4 STEL; 9192
Other Recommended Limit:

=====
Physical/Chemical Characteristics
=====

Appearance And Odor: TRANSPARENT, COLORLESS TO YELLOW LIQUID WITH A PUNGENT ODOR.
Boiling Point: 187F,86C
Melting Point: UNKNOWN
Vapor Pressure (MM Hg/70 F): 62
Vapor Density (Air=1): UNKNOWN
Specific Gravity: 1.504
Decomposition Temperature: UNKNOWN
Evaporation Rate And Ref: UNKNOWN
Solubility In Water: COMPLETE
Percent Volatiles By Volume:
Viscosity: N/K
pH:
Radioactivity: N/R
Form (Radioactive Matl):
Magnetism (Milligauss): N/P
Corrosion Rate (IPY):
Autoignition Temperature:

=====
Fire and Explosion Hazard Data
=====

Flash Point: N/A
Flash Point Method: N/P
Lower Explosive Limit:
Upper Explosive Limit:
Extinguishing Media: WATER
Special Fire Fighting Proc: WEAR SELF-CONTAINED BREATHING APPARATUS
Unusual Fire And Expl Hazrds: REACTS EXPLOSIVELY WITH METALLIC POWDERS, CARBIDES, HYDROGEN SULFIDE AND TURPENTINE. SEE SUPPLEMENTAL.

Report for NIIN: 002372918

=====
Reactivity Data
=====

Stability: YES
Cond To Avoid (Stability): ELEVATED TEMPERATURES AND PRESSURES
Materials To Avoid:
Hazardous Decomp Products: HYDROGEN IN CONTACT WITH METALS:NITROGEN
OXIDES.
Hazardous Poly Occur: NO
Conditions To Avoid (Poly):
=====

=====
Health Hazard Data
=====

LD50-LC50 Mixture:
Route Of Entry - Inhalation: N/P
Route Of Entry - Skin: N/P
Route Of Entry - Ingestion: N/P
Health Haz Acute And Chronic:
Carcinogenicity - NTP: N/P
Carcinogenicity - IARC: N/P
Carcinogenicity - OSHA: N/P
Explanation Carcinogenicity:
Signs/Symptoms Of Overexp: ACCELERATED RESPIRATORY RATE,DECREASED VITAL
CAPACITY.CAUSES INTENSE PAIN AND SEVERE BURNS TO EYES
Med Cond Aggravated By Exp:
Emergency/First Aid Proc: EYES:RINSE WITH WATER.SKIN:FULLY WASH WITH 5%
SOLUTION OF SODIUM BICARBONATE,OR SOAP AND WATER.BURNS: TREAT WITH CLOTH
IMMERSED IN A SATURATED SOLUTION OF POTASSIUM THIOSULFATE.INTERNAL:ORALLY
ADMINISTER SOAP SOLUTION,CALCIUM HYDROXIDE,ALUMINUM HYDRO
=====

=====
Precautions for Safe Handling and Use
=====

Steps If Matl Released/Spill: FLUSH AREA WITH WATER SPRAY.COVER WITH
SODIUM CARBONATE OR AN EQUAL MIXTURE OF SODA ASH AND SLAKED LIME.AFTER
MIXING,ADD WATER IF NECESSARY TO FORM A SLURRY.
Neutralizing Agent:
Waste Disposal Method: ADD SLOWLY TO A LARGE AMOUNT OF SOLUTION OF SODA
ASH AND SLAKED LIME BY STIRRING. DISCHARGE THE SOLUTION INTO APPROVED
STORAGE CONTAINERS.
Precautions-Handling/Storing: PROTECT AGAINST PHYSICAL DAMAGE. KEEP AWAY
FROM METALLIC POWDER,CARBIDES,HYDROGEN SULFIDE,TURPENTINE,ORGANIC ACIDS.
Other Precautions: KEEP AWAY FROM ALL COMBUSTIBLE,ORGANIC AND OTHER
READILY OXIDIZABLE MATERIALS. AVOID DIRECT SUNLIGHT.
=====

=====
Control Measures
=====

Respiratory Protection: SELF-CONTAINED BREATHING APPARATUS.
Ventilation: GENERAL - YES
Protective Gloves: RUBBER
Eye Protection: SAFETY GOGGLES
Other Protective Equipment: FACE SHIELD, RUBBER SHOES,PROTECTIVE CLOTHING.
Work Hygienic Practices:
Suppl. Safety & Health Data: NITRIC ACID INCREASES FLAMMABILITY OF
=====

PROCTER & GAMBLE

MATERIAL SAFETY DATA SHEET

Laundry & Cleaning Products Division
Ivorydale Technical Center
Cincinnati, Ohio 45217

Issue Date: 5/93

SECTION I

EMERGENCY TELEPHONE NUMBERS

24 Hour P&G Operator Service 1-800-765-5516 or call local Poison Control Center.

IDENTITY Lemon Cascade LiquiGel (Automatic dishwashing detergent). TL

OTHER Ingredients: Water softeners (potassium and/or sodium complex phosphates and/or carbonate salts), cleaning agent (chlorine bleach), dishware, flatware, and dishwasher protection agents (sodium and/or potassium silicates), water, thickening agent, buffering agent, stabilizing agent, colorant, and perfume.

SECTION II -- HAZARDOUS INGREDIENTS/IDENTITY INFORMATION HAZARDOUS INGREDIENTS AS DEFINED BY OSHA, 29 CFR 1910.1200

CHEMICAL NAME	COMMON NAME	CAS NO.	ACGIH TLV	OSHA PEL	OTHER LIMITS RECOMMENDED
This alkaline mixture, when tested as a whole, is considered an eye irritant and a skin irritant within the meaning of the OSHA Hazard Communication Standard.					

SECTION III -- PHYSICAL/CHEMICAL CHARACTERISTICS

BOILING POINT (°F)

N.A.

SPECIFIC GRAVITY (H₂O = 1)

- 1.2 - 1.3 g/cc

VAPOR PRESSURE (MM HG)

N.A.

PERCENT VOLATILE BY VOLUME (%)

< 1

VAPOR DENSITY (AIR = 1)

N.A.

EVAPORATION RATE (nBuOAc = 1)

N.A.

SOLUBILITY IN WATER

Miscible with water. Contains small amount of insoluble, colloidal size particles.

APPEARANCE AND ODOR

Yellow color. Thick/viscous gel. Product is perfumed.

pH

1% solution = 10.8, as is = 12.2

SECTION IV -- FLAMMABILITY AND REACTIVITY DATA

FLASH POINT (METHOD USED)

N.A.

EXPLOSIVE LIMITS

LEL N.A. UEL N.A.

EXTINGUISHING MEDIA

N.A.

SPECIAL FIRE FIGHTING PROCEDURES

None

UNUSUAL FIRE HAZARDS

None

STABILITY

Stable. May lose available chlorine with time.

CONDITIONS TO AVOID

None known.

INCOMPATIBILITY (Materials to avoid)

Strong acids, ammonia or ammonia containing products including dishwashing liquids as hazardous fumes may result (product contains chlorine bleach).

HAZARDOUS DECOMPOSITION/BY PRODUCTS

Chlorine

HAZARDOUS POLYMERIZATION

Will not occur.

CONDITIONS TO AVOID

None known.

LEMON CASCADE LIQUIGEL Cont'd

SECTION V - HEALTH AND SAFETY DATA

HEALTH EFFECTS (ACUTE AND CHRONIC)

Ingestions: Ingestion of this alkaline mixture may cause vomiting and moderate to severe oral and/or gastrointestinal irritation.
Eye Contact: May cause moderate, transient irritation.
Skin: May cause moderate, transient irritation.

SIGNS AND SYMPTOMS OF EXPOSURE

Ingestion: Possible burning sensation and irritation of mouth and throat and possible nausea, vomiting, and diarrhea depending on the amount ingested.
Eye Contact: May cause stinging, tearing, itching, swelling, and/or redness
Skin: May result in transient skin irritation (redness, swelling) upon prolonged contact with undiluted material.

EMERGENCY AND FIRST AID PROCEDURES

Ingestion: Give a large glassful of water or milk, do not induce vomiting. Quantities which might normally be ingested in a work environment should not be of major concern. However, if volume of ingestion is greater than approximately 1 teaspoon (adult), a hospital emergency room or family physician should be consulted. If persistent vomiting occurs or if blood tinged vomitus is present, medical attention should be sought immediately.
Eye Contact: Flush thoroughly with water for 15 minutes.
Skin: Rinse skin thoroughly with water. If spilled on clothing, change clothes.

OTHER

Consumer product package has a caution statement:
"CAUTION: Harmful if swallowed. Eye and skin irritant. Keep out of reach of children. If swallowed, give a large glass of water or milk. Call a poison control center or physician. In case of eye contact, flush eye thoroughly with water. If spilled on skin, rinse with water."

SECTION VI - PRECAUTIONS FOR SAFE HANDLING AND USE

PRECAUTIONS TO BE TAKEN IN HANDLING AND STORING

No unusual precautions necessary.

OTHER PRECAUTIONS

None

STEPS TO BE TAKEN IN CASE MATERIAL IS RELEASED OR SPILLED

Flush small (household) quantities down acceptable sewer. Prevent large spills from reaching a waterway. Sorbents may be used. For large spills, protective clothing (coveralls, gloves, etc.) may be worn.

WASTE DISPOSAL METHOD

Disposal is to be performed in compliance with all regulations. Do not landfill. Incineration is preferred. Small or household quantities may be disposed of in sewer.

SECTION VII - SPECIAL PROTECTION INFORMATION

RESPIRATORY PROTECTION (Specify Type)

None required with normal use.

VENTILATION

LOCAL EXHAUST None required.

MECHANICAL (General) General dilution ventilation is acceptable.

OTHER None

EYE PROTECTION

None required with normal use.

If a splash is likely, chemical goggles may be needed.

PROTECTIVE GLOVES

None required with normal use.

Protective gloves (rubber, neoprene) should be used for prolonged direct contact.

OTHER PROTECTIVE EQUIPMENT

None required with normal use.

***N.A. - NOT APPLICABLE**

The submission of this MSDS may be required by law but this is not an assertion that this substance is hazardous when used in accordance with proper safety practices and normal handling procedures.