

013049

JPRS 82385

3 December 1982

# China Report

PLANT AND INSTALLATION DATA

No. 40

19980908 137

DISTRIBUTION STATEMENT A  
Approved for public release  
Distribution Unlimited

**FBIS**

FOREIGN BROADCAST INFORMATION SERVICE

3  
58  
A04

#### NOTE

JPRS publications contain information primarily from foreign newspapers, periodicals and books, but also from news agency transmissions and broadcasts. Materials from foreign-language sources are translated; those from English-language sources are transcribed or reprinted, with the original phrasing and other characteristics retained.

Headlines, editorial reports, and material enclosed in brackets [ ] are supplied by JPRS. Processing indicators such as [Text] or [Excerpt] in the first line of each item, or following the last line of a brief, indicate how the original information was processed. Where no processing indicator is given, the information was summarized or extracted.

Unfamiliar names rendered phonetically or transliterated are enclosed in parentheses. Words or names preceded by a question mark and enclosed in parentheses were not clear in the original but have been supplied as appropriate in context. Other unattributed parenthetical notes within the body of an item originate with the source. Times within items are as given by source.

The contents of this publication in no way represent the policies, views or attitudes of the U.S. Government.

#### PROCUREMENT OF PUBLICATIONS

JPRS publications may be ordered from the National Technical Information Service, Springfield, Virginia 22161. In ordering, it is recommended that the JPRS number, title, date and author, if applicable, of publication be cited.

Current JPRS publications are announced in Government Reports Announcements issued semi-monthly by the National Technical Information Service, and are listed in the Monthly Catalog of U.S. Government Publications issued by the Superintendent of Documents, U.S. Government Printing Office, Washington, D.C. 20402.

Correspondence pertaining to matters other than procurement may be addressed to Joint Publications Research Service, 1000 North Glebe Road, Arlington, Virginia 22201.

CHINA REPORT  
PLANT AND INSTALLATION DATA

No. 40

CONTENTS

I. Metallurgical Industry.....	1
II. Transportation Equipment Industry.....	4
III. Electronic and Precision Equipment Industries.....	7
IV. Chemical Industry.....	12
V. Fuel and Power Industries.....	15
VI. Machine-Building Industry.....	20
VII. Agricultural Machinery Industry.....	26
VIII. Miscellaneous Industries.....	27
IX. Photographs of Industrial Facilities.....	30

## I. METALLURGICAL INDUSTRY

Item: Gansu Rare Earth Corporation  
[3927 5126 0960 0960 0361 0674]

Location: Jingyuan, Gansu, PRC

Data: As a result of improved management and expansion projects, this corporation has increased the output of rare earth chloride, its principal product, by 300 percent, recovery rate by 33.09 percent, and gross industrial output value by 264.82 percent, and lowered its production cost by 55.9 percent. In 1981, despite a 14.77-percent reduction in the price of rare earth chloride, the corporation overfulfilled its annual profit plan by 19 percent. In 2.5 years' time, it accrued 7.7 million yuan in profits. It accounts for 50 percent of the rare earth chloride products exported from China. Its first phase technical reform project was completed before the 11th Party Congress and the second phase project was started immediately follow-  
int the party congress. The third phase technical reform project, which was originally scheduled for completion in 1985, is expected to be finished ahead of schedule in 1984.

Source: Lanzhou GANSU RIBAO in Chinese 13 Sep 82 p 2

Item: Chongqing Iron and Steel Company  
[6850 1987 6921 6993 0361 0674]

Location: Chongqing, Sichuan, PRC

Data: Since it was granted autonomy in decision making 3 years ago, this company has been reducing the production costs of its principal products and has realized profits totaling 188.93 million yuan. Its profit for the January-July 1982 period showed an increase of 35.14 percent over the same 1981 period.

Source: Chengdu SICHUAN RIBAO in Chinese 20 Sep 82 p 2

Item: Jinchuan Company  
[6855 1557 0361 0674]

Location: Jinchuan, Gansu, PRC

Data: This company's open-pit mine has fulfilled its 1982 ore output plan of 700,000 metric tons 103 days ahead of schedule. As of 19 September, with the help of the ore-dressing plant and transportation department, the open-pit mine turned out an additional 300,000 metric tons of ore, increasing its earnings by 6.43 million yuan.

Source: Lanzhou GANSU RIBAO in Chinese 24 Sep 82 p 1

Item: Shanghai Shaped Steel Tubings Mill  
[0006 3189 3976 0992 6921 4619 0617]

Location: Shanghai, PRC

Data: The tube-type arc shaped crystallizer built by this mill was successfully tested on 19 September at the Kunming Iron and Steel Mill. This piece of equipment, which is up to the world's advanced level in its technical targets, has closed a gap in China's shaped steel tubings production.

Source: Shanghai WEN HUI BAO in Chinese 22 Sep 82 p 1

Item: Suichang Gold Mine  
[6659 2490 6855 4349]

Location: Zhejiang Province, PRC

Data: As of 28 September, this mine has prefulfilled its 1982 gold output plan. Its silver output plan has also been overfulfilled. This year, the mine's average gold content per metric ton of ore was 3.1 grams lower than the preceding year. In order to fulfill or overfulfill the mine's annual gold and silver output quotas, the ore-dressing workshop adopted effective measures to improve its management, repair the main equipment, and raise operation efficiency. As a result, the amounts of ore processed during the January-September 1982 period were increased by 5,000 metric tons, as compared to 1981, and the amount of gold recovered was as high as 94.1 percent, a 12.42-percent increase over the preceding year.

Source: Hangzhou ZHEJIANG RIBAO in Chinese 16 Oct 82 p 1

Item: Harbin Cold-Rolled Strip Steel Plant  
[5756 1422 3453 0397 6509 1601 6921 0617]

Location: Harbin, Heilongjiang, PRC

Data: The first Chinese designed and built strip steel production line was put into production at this plant. This production line is designed to produce 32 metric tons of 200-meter-wide strip steel in 10 days.

Source: Harbin Heilongjiang Provincial Service in Mandarin 2200 GMT 17 Oct 82 SK

## II. TRANSPORTATION EQUIPMENT INDUSTRY

Item: Dalian Shipyard  
[2191 6647 6644 5307 0617]

Location: Dalian, Liaoning, PRC

Data: During the past 4 years, this 80-year-old shipyard has received orders for eight 27,000-ton ocean-going vessels and two offshore oil drilling rigs. In addition to orders received from foreign business firms, this shipyard has been assigned the task by the Ministry of Communications to build 22 vessels, totaling 500,000 tons.

Source: Shenyang LIAONING RIBAO in Chinese 30 Sep 82 p 1

Item: China Ship and Marine Engineering Design Institute  
[0022 0948 5307 0644 3189 1562 4453 6080 4282 4496 7108]

Location: Shanghai, PRC

Data: A small-sized amphibious hovercraft designed and built by this institute was recently checked and accepted by representatives of the Dagang Oilfield following a series of performance tests. Designed for geological prospecting along the beaches, this amphibious hovercraft measures 8.6 meters in length, 2.24 meters in height, and 3.4 meters in width and weighs 2,850 kilograms. It carries eight persons or 600 kilograms of cargo. With a speed of 46 kilometers per hour, the hovercraft can safely operate in wind under grade 4 or 5. It can also climb hills, cross ditches, and navigate on water, land and marshland.

Source: Shanghai JIEFANG RIBAO in Chinese 11 Sep 82 p 2

Item: Qiqihar Rolling Stock Plant  
[7841 7841 0761 1422 6508 6538 0617]

Location: Qiqihar, Heilongjiang, PRC

Data: China's first super weight and super length freight car was successfully trial manufactured by this plant. This Chinese-designed freight car is made of materials and parts produced in China. The vehicle is 62.2 meters long, weighs 3.50 metric tons, and can transport large generator rotors and heavy machinery and can move sideward, rise and descend, and perform self-dumping and self-loading operations. This achievement indicates that China has reached a new level in its freight car manufacturing technology.

Source: Shanghai JIEFANG RIBAO in Chinese 21 Sep 82 p 3

Item: Civil Aviation Plant No 102  
[3046 5300 0001 7190 1708 0617]

Location: Shanghai, PRC

Data: A new type of equipment that can [electrolyze] cyanide-bearing industrial and hospital liquid wastes has passed the appraisal test and is now in batch production. This set of equipment was jointly built by this plant and the Shanghai Civil Construction Design Institute. Its cyanide removal rate is 99.5 percent.

Source: Shanghai JIEFANG RIBAO in Chinese 7 Oct 82 p 2

Item: Motor Vehicle Plant No 2  
[4574 1702 3086 6508 0455 6644 0617]

Location: Hubei, PRC

Data: During January-July 1982, this plant turned out some 29,000 motor vehicles, surpassing the record for last year's corresponding period by more than 50 percent. Now the plant's production capacity has been boosted to 80,000 vehicles a year. Last year's profits exceeded 100 million yuan.

Source: Beijing XINHUA Domestic Service in Chinese 0117 GMT 23 Sep 82 OW

Item: Guangzhou Harbor Construction Company  
[1684 1558 3263 0656 1696 6080 0361 0674]

Location: Guangzhou, Guangdong, PRC

Data: China's largest engineering crane ship capable of lifting 500 metric tons left this harbor today for Qingdao, Shandong Province. The new ship--60 meters long and 26 meters wide--lifts as high as 60 meters. The ship was built in 10 months by the ship repair yard under the Guangzhou Harbor Construction Company using blueprints, raw materials and equipment provided by Japanese companies. The ship underwent trial operations 12 October.

Source: Beijing XINHUA in English 1250 GMT 19 Oct 82 OW

### III. ELECTRONIC AND PRECISION EQUIPMENT INDUSTRIES

Item: Plant No 4504  
[0934 0063 7190 9034 0617]

Location: Beijing, PRC

Data: More than 30 young Chinese scientists and technicians of the CAS Automation Institute, the Changchun Precision Optical Machinery Institute and this plant under the Ministry of Electronics Industry have self-reliantly manufactured the multipurpose pattern generator (dong gong neng tu xing fa sheng qi 1122 0501 5174 0956 1748 4099 3932 0892)--a key equipment for making photomarks for large integrated circuits. This is an internationally highly competitive and fast growing scientific research project with a high degree of technical difficulty. So far only a few countries can manufacture this pattern generator but they maintain a blockade and embargo on the export of this generator to China. Recent tests on this device by the CAS and the Ministry of Electronics Industry showed that the various technical data had reached or surpassed the original designed targets.

Source: Beijing XINHUA Domestic Service in Chinese 1346 GMT 21 Oct 82 OW

Item: Shuguang Radio Plant  
[2562 0342 3541 4848 7193 0617]

Location: Harbin, Heilongjiang, PRC

Data: In cooperation with the Harbin Industrial College, this plant has devised a new technique of making monocrystal silicon extension chips that are up to standards. Crystals produced in the past had impurities which makes it difficult to produce up-to-standard products. Associate professor Zhou Shiren and lecturer Ye Yizheng of the Harbin Industrial College and assistant engineer Zhou Weidong of this plant read voluminous materials, Chinese and foreign, and conducted countless tests before achieving this breakthrough.

Source: Harbin HEILONGJIANG RIBAO in Chinese 24 Sep 82 p 1

Item: Shanghai Quartz Glass Plant  
[0006 3189 4258 5391 3788 3863 0617]

Location: Shanghai, PRC

Data: In cooperation with the Shanghai Electric Cable Institute, this plant recently produced a four-core steel strip armored light weight optical fiber cable measuring 7.3 kilometers in length. Tested under -30°C temperature, the cable demonstrated excellent performance and resistance to strong electric field interference and lightning strike, thus insuring the quality of communications.

Source: Shanghai WEN HUI BAO in Chinese 22 Sep 82 p 1

Item: Shanghai Radio Plant No 32  
[0006 3189 4541 4848 7193 0005 0577 1708 0617]

Location: Shanghai, PRC

Data: A Chinese built continuous assembly line, which turns out one Yuyi [Friendship] brand television set every 2 minutes, passed an appraisal test here on 10 September. This continuous assembly line has an annual output capacity of 100,000 TV sets and measures 340 meters in total length. Its design began in April 1981 and installation work started in July the same year. Trial operation was carried out in early 1982.

[Photo available]

Source: Shanghai JIEFANG RIBAO in Chinese 11 Sep 82 p 2

Item: Shanghai Electric Meter Plant  
[0006 3189 7193 1653 5903 0617]

Location: Shanghai, PRC

Data: Former known as Hecheng Electric Equipment Plant [0735 2052 7193 0892 0617], this plant produces Hecheng brand kilowatt-hour meters, including DT8 threephase four-wire active electric meter, DS8 three-phase three-wire active electric meter, DX8 threephase reactive electric meter, precision grade threephase three-wire active, reactive electric meter, and SX8-J threephase three-wire reactive pulse electric meter.

Source: Beijing YIQI YU WEILAI [INSTRUMENTATION AND FUTURE] in Chinese No 8, 1982, inside backcover

Item: Shenyang Optical Instruments Plant  
[3088 7122 0342 1331 0308 0892 0617]

Location: Shenyang, Liaoning, PRC

Data: By taking low profits to increase the sale volume, this plant was able to overfulfill the 2 million yuan annual state quota by 50,000 yuan in mid-October. This plant's principal products include gas detector, infrared thermometer, and motion picture stereo enlargement lens. Early this year, due to poor product sales, the plant had operated at a loss. In the past, the profit from each gas detector produced by this plant was 120 yuan, and after the product quality has improved and production cost lowered, profit per detector dropped to only 60 yuan, thus making it possible to increase the sale volume. Recently the plant's leadership has pledged to surpass the profit plan by 500,000 yuan by the end of this year.

Source: Shenyang LIAONING RIBAO in Chinese 19 Oct 82 p 1

Item: Shanghai Light Bulb Plant  
[0006 3189 3597 3133 0617]

Location: Shanghai, PRC

Data: According to statistics compiled by this plant during the first 10 days of September, since June this year, the production line imported from Japan has turned out 1.2 million Jenmin (People's) brand TV picture tubes, the economic returns of which can pay for 80 percent of the capital invested by the state. The imported production line is capable of producing four 12-14 inch black and white television picture tubes per minute.

Source: Shanghai JIEFANG RIBAO in Chinese 6 Oct 82 p 2

Item: Huaibei Terminal Equipment Company  
[5478 0554 4807 4551 6080 0271 0361 0674]

Location: Beijing, PRC

Data: China has developed a Chinese character micro-computer. Designed by the Yanshan Computer Research Institute, produced by this company and appraised by the Computer Industry Administration under the Ministry of Electronics Industry, the ZD-2000 microcomputer will soon be put into batch production. This computer utilizes the world's most advanced module structure and is composed of a control console, a visual display, a storage memory, and a Chinese character printer. It also has a keyboard for both Chinese characters and the English alphabet. A Chinese character can be produced on the displayer either by touching the key of the Chinese character keyboard--which contains over 4,000 Chinese characters in common use--or by spelling the character in the Chinese phonetic alphabet on the English keyboard.

Source: Beijing XINHUA Domestic Service in Chinese 0244 GMT 21 Sep 82 OW

Item: Harbin City Instrument and Meter Research Institute  
[5756 1422 1579 3453 0308 5903 4282 4496 2076]

Location: Harbin, Heilongjiang, PRC

Data: The model GY 1 optometry instrument, first domestic manufacture, made by this institute was put into production in Heilongjiang Province on 5 October.

Source: Harbin Heilongjiang Provincial Service in Mandarin 1100 GMT  
25 Oct 82 SK

Item: China Computer Technological Service Company  
[0022 0948 6060 4516 2623 2591 0523 0361 0674]

Location: Tianjin, PRC

Data: The Tianjin branch of this company was officially established on 13 October.

Source: Tianjin City Service in Mandarin 0030 GMT 14 Oct 82 SK

#### IV. CHEMICAL INDUSTRY

Item: Mudanjiang Chemicals Plant No 1  
[3665 0030 3068 0553 1562 0001 0617]

Location: Mudanjiang, Heilongjiang, PRC

Data: A new 16,500 KVA internal combustion-type sealed carbide furnace built by this plant was put into operation on 27 September, and it is turning out up-to-standard products. Designed and built by personnel here, the furnace has lowered its power consumption per ton of carbide by 300 kwh. On the basis of the designed capacity, 9 million kilowatt hours of electricity can be saved annually. Upon completion, the furnace will be able to ease the shortage of carbide supply in Heilongjiang Province.

Source: Harbin HEILONGJIANG RIBAO in Chinese 8 Oct 82 p 1

Item: Haolianghe Chemical Fertilizer Plant  
[3185 5328 3109 0553 5142 0617]

Location: Heilongjiang, PRC

Data: In September, this plant produced 8,015 metric tons of urea, setting a new monthly output record among the country's urea-making enterprises of similar scale. The ammonia consumption rate per ton of urea produced declined from 655 to 620 kilograms. The plant operated 28 1/2 days continuously in September and earned a profit of 1.3 million yuan to lead enterprises of similar scale throughout the country in these targets.

Source: Harbin HEILONGJIANG RIBAO in Chinese 16 Oct 82 p 1

Item: Jiaozuo Chemical Plant No 3  
[3542 0155 0553 1562 0005 0617]

Location: Jiaozuo, Henan, PRC

Data: This plant has conducted scientific research to reduce the production cost of alkali. As a result, the cost for the production of each ton of pure alkali has been 53 yuan less than last year. The Kaifeng Dyestuff and Chemical Plant is producing five new products and its output value from January to September this year was approximately 2 million yuan more than in the same period last year. With the development of new techniques through scientific research, the chemical industrial system in Henan Province has increased its output value by some 20 million yuan and its profits by 3 million yuan.

Source: Zhengzhou Henan Provincial Service in Mandarin 1100 GMT 8 Oct 82 HK

Item: Nantong Fermentation Plant  
[0589 6639 4099 6806 0617]

Location: Nantong, Jiangsu, PRC

Data: This plant, China's largest citric acid producer, reports completion of the first stage of its expansion project, doubling its annual output of the product to 4,000 metric tons. The project, completed yesterday, covers 7.7 hectares of land and involves construction of 16,400 square meters of workshop buildings. The plant will be able to produce 7,000 metric tons of citric acid each year, upon completion of the second stage expansion, for which preparations are now under way. The plant accounts for about 30 percent of the country's total citric acid exports, a key raw material for food, beverage, pharmaceutical and printing and dyeing industries.

Source: Beijing XINHUA in English 0820 GMT 28 Oct 82 OW

Item: Nanjing Alkyl Benzene Plant  
[0589 0079 7909 1015 0058 0617]

Location: Nanjing, Jiangsu, PRC

Data: This plant, China's largest, was completed after 4 years of construction. The plant, built with U.S. and Italian equipment and technology, is capable of producing 50,000 metric tons of alkyl benzene a year, which can be used to manufacture 250,000 metric tons of laundry powder. (Wang Deying), member of the State Planning Commission and head of the Capital Construction Office; Wang Wenzhe, vice minister of the Light Industry Ministry; and Liu Hegeng, vice governor of Jiangsu, attended the ribbon-cutting ceremony held on 20 October.

Source: Nanjing Jiangsu Provincial Service in Mandarin 1100 GMT 20 Oct 82 OW

V. FUEL AND POWER INDUSTRIES

Item: Liancheng Power Plant  
[6647 1004 7193 0617]

Location: Gansu, PRC

Data: The first phase project of this plant, a large pit-mouth thermal power plant, has been completed 2 months ahead of schedule. The second generating unit is operating normally after a 72-hour continuous trial operation. It has joined the power network on 27 September. One of the state key construction projects, this plant has a planned total installed capacity of 400,000 kilowatts. The first phase project calls for the installation of two steam turbo-generating sets with inner water-cooled stators and rotors. The single-unit capacity is 100,000 kilowatts. The first generating set was put into operation at the end of 1981. The completion of the first phase project of this plant has increased the reliability of power supply during the dry season and will play an important role in adjusting the hydroelectric power and thermal power of the network.

Source: Lanzhou GANSU RIBAO in Chinese 30 Sep 82 p 1

Item: Dawukou Power Plant  
[2192 2976 0656 7193 0617]

Location: Ningxia Hui AR, PRC

Data: [1] Construction of this "pit-mouth" power plant, the first of its kind in Ningxia, was recently started. The project will be equipped with four 100,000-kilowatts generating units, with a total installed capacity of 400,000 kilowatts. The first generating unit is scheduled for completion in 1985. Upon completion of installation, the four generating units will generate 2 billion kilowatt hours of electricity a year, which is comparable to Ningxia's current total yearly electric power output.

[2] Construction of this large thermal power plant has been started near a coal mining area in the Ningxia Hui Autonomous Region, Northwest China, according to today's WORKERS DAILY [GONGREN RIBAO]. With a generating capacity of 400,000 kilowatts, the plant will be the biggest in the region, which is inhabited by Hui, Han and other nationalities. When completed, power output of Ningxia will be doubled. The power plant is scheduled to be linked with power networks of neighboring Shaanxi, Gansu and Qinghai provinces and Inner Mongolia. As a result, electricity supply and regulation in the Northwest are expected to be improved.

Source: [1] Shenyang LIAONING RIBAO in Chinese 4 Oct 82 p 4  
[2] Beijing XINHUA in English 1244 GMT 23 Sep 82 OW

Item: Fularji Thermal Power Plant  
[1381 2139 1422 1015 3583 7193 0617]

Location: Fularji, Heilongjiang, PRC

Data: The "Iron Pagoda" brand 10-percent glucose transfuse produced by this plant's pharmaceutical plant has won acclamation in Heilongjiang Province for its high quality. The small-scale pharmaceutical plant uses the plentiful condensed steam water from this plant to make this pharmaceutical, which has been officially included in the state plan. The pharmaceutical plant has become the only plant in western Heilongjiang making transfuse.

Source: Harbin HEILONGJIANG RIBAO in Chinese 23 Sep 82 p 1

Item: Qixing Mine  
[0003 2502 4349]

Location: Heilongjiang, PRC

Data: Inspired by the recent 12th Party Congress, the miners here have revised their annual coal output goal from 2.09 million metric tons to 2.3 million metric tons and their annual profit delivery plan from 15.6 million yuan to 18 million yuan. During the first 9 months of 1982, they produced for the state 220,000 metric tons of coal above the norm and turned over to the state 14 million yuan in profit.

Source: Harbin HEILONGJIANG RIBAO in Chinese 16 Oct 82 p 1

Item: Qitaihe Mining Zone  
[0003 0669 3109 4349 0575]

Location: Heilongjiang Province, PRC

Data: Located in the Boli Coalfield, this mining zone has a verified coal reserve of 1.4 billion metric tons, over 50 percent of which is coking coal. It is currently carrying out an all-round development plan to gradually expand its production scale. This expansion project is expected to be completed in 13 years.

The zone's current annual output capacity under the "unified distribution plan" has increased from 2 million to 3 million metric tons. Together with the output of local government-operated coal mines, the total output would reach 5 million metric tons.

Source: Harbin HEILONGJIANG RIBAO in Chinese 24 Sep 82 p 1

Item: Yanshan Petrochemical Corporation  
[3601 1472 4258 3111 0553 1562 0361 0674]

Location: Beijing, PRC

Data: In the last 3 years, this corporation has turned over to the state operating profit and tax payment to the amount of 3.36 billion yuan, equivalent to 140 percent of the state investment in this corporation. The corporation is also noted for achievement in conservation of energy. Its energy savings over the past 3 years are equivalent to 220,000 metric tons of standard coal. Now it makes more than 180 products, serving the needs of some 1,600 enterprises and establishments in the country. Some products are also for export.

Source: Beijing XINHUA Domestic Service in Chinese 0100 GMT 8 Oct 82 OW

Item: [Shenyang] General Petroleum Industry Corporation  
[(3088 7122) 4258 3111 1562 2814 4920 0361 0674]

Location: Jinzhou, Liaoning, PRC

Data: This corporation, which will be able to export over 500,000 metric tons of petroleum products annually, was established today here. The new corporation, under the Ministry of Petroleum Industry and the Liaoning Provincial Government, incorporates two oil refineries, one chemical plant and one petrochemical plant. Previously, the four were managed by different departments. They have been incorporated to streamline production and use of petroleum resources, according to a spokesman for the corporation. The corporation plans to meet its export quota by completing 15 technical renovation projects. As a result, it will pay an additional 100 million yuan in profits and taxes annually to the state, the spokesman said. It also plans to increase its annual synthetic rubber output from the present 6,000 metric tons to 10,000 metric tons, and isopropyl alcohol output from 8,000 metric tons to 20,000 metric tons, through the recovery of liquefied gas which used to be burned. This will result in an extra 22 million yuan in profits and taxes annually. The corporation is China's fourth transdepartmental petrochemical company established to end inefficient management. The other three are the Shanghai Gaoqiao Petrochemical Company, the Jinling General Petrochemical Corporation in Nanjing, capital of Jiangsu Province, and the Fushun General Petroleum Industry Corporation in Liaoning Province.

Source: Beijing XINHUA in English 1244 GMT 5 Nov 82

Item: Jixi Mining Administrative Bureau  
[7179 6007 4349 0523 1444]

Location: Jixi, Heilongjiang, PRC

Data: The construction of a large coal pit under this bureau, with a designed capacity of 900,000 metric tons, began after being approved by the Ministry of Coal Industry. All facilities, including railway, highway, communications and power and water supplies, are ready.

Source: Harbin Heilongjiang Provincial Service in Mandarin 2200 GMT 3 Oct 82 SK

Item: Daqing Ethylene Plant  
[2192 1987 0044 7910 0617]

Location: Heilongjiang, PRC

Data: With the placement of a 63.2-meter-high rectifying tower yesterday, full-scale equipment installation has begun at this large ethylene plant here in China's leading oilfield. The tower, which measures 1.9 meters in diameter and weighs 80.4 metric tons, will be used to produce butadiene, an important raw material for making synthetic rubber, plant officials said. The plant, designed to produce 300,000 metric tons of ethylene annually, will use light hydrocarbon recovered from natural gas and crude oil as its raw material. It will have 13 sets of technological production installations, part of which will be imported from Japan, West Germany and Britain. When completed, the plant is expected to be able to provide 587,600 metric tons of raw material for production of organic chemicals, plastics and chemical fibers.

Source: Beijing XINHUA in English 0832 GMT 30 Sep 82 OW]

VI. MACHINE-BUILDING INDUSTRY

Item: Wuhan Plant No 3303  
[2976 3352 0005 0005 7190 0005 0617]

Location: Wuhan, Hubei, PRC

Data: In order to meet the requirements for processing an unidentified product, this plant has modified the Y631K spline shaft milling machine, which has a maximum processing length of 600mm and is capable of processing 4-10 splines. The modification has permitted the milling machine to increase its processing length to 880mm and the number of teeth it processes to 63. The precision and smooth finish of products turned out by this modified machine tool are excellent.

Source: Shanghai JIXIE ZHIZAO [MACHINERY] in Chinese No 9, 1982 p 56

Item: Xi'an Plant No 524  
[6007 1344 0063 1708 0934 0617]

Location: Northern suburbs of Xi'an city, Shaanxi, PRC

Data: Subordinate to the China Atomic Energy Industry Corporation, this plant produces all types of pressure containers and chemical and general machinery made of carbon steel, stainless steel, aluminium, titanium, nickel and their alloys. It does forging, casting, riveting, welding, ramming, machining, heat treatment, processing of nonmetallic materials, electroplating, and non-destructive fault finding. It supplies complete sets of technical equipment for making beer and chemical fibers, for printing and dyeing, and for making pharmaceuticals, chemical fertilizer, and chemicals. Other products also include 15-200 liter liquid nitrogen container, combination machine tool for wood work, and liquid chlorine bottle.

Source: Beijing GONGREN RIBAO in Chinese 24 Sep 82 p 3

Item: Yunnan Electric Welding Machine Plant  
[0061 0589 7193 1880 2623 0617]

Location: Southern Suburbs, Huize County, Yunnan, PRC

Data: Formerly known as the Huize Xian Electric Welding Machine Plant, this plant is one of the key factories retained by the Yunnan Provincial Government to meet the needs in the four modernization program. It is subordinate to the Yunnan Electrical Industry Corporation. Its principal products include DC arc welding machines, silicon rectifier transformers, dual-purpose DC and AC welding machines, diesel engine-driven DC arc welding units, DC arc generating units, and chargers.

Source: Kunming YUNNAN RIBAO in Chinese 19 Jul 82 p 3

Item: Qianjin Machinery and Equipment Plant  
[0467 6651 2623 0892 0617]

Location: Probably Chengdu, Sichuan, PRC

Data: This special vehicle manufacturing plant has been stepping up its trial production of new products. Workshop No 5 has put the Dongfeng garbage truck into small-scale production. This workshop expects to turn out 30 high-pressure centrifugal pumps for its water transport trucks one month ahead of schedule. The oil transport trucks manufactured by the workshop in August were up to high quality standards. In September, the workers of Workshop No 2 set their goal for the production of high-quality military construction vehicles.

Source: Chengdu SICHUAN RIBAO in Chinese 18 Sep 82 p 2

Item: Harbin Construction Machinery Plant  
[0761 1422 3453 1562 4453 2623 2750 0617]

Location: Harbin, Heilongjiang, PRC

Data: China's first 25-ton hydraulic cross-country tired crane has been successfully built by this plant. It passed the appraisal test on 10 September. The plant can now manufacture three series totaling seven different types of cranes, including 12-ton truck crane and 16-ton tired crane. An imported 25-ton fully hydraulic cross-country tired crane now costs 600,000 to 700,000 yuan, whereas one such crane built by this plant costs only 300,000 yuan.

Source: Harbin HEILONGJIANG RIBAO in Chinese 1 Oct 82 [no page given]

Item: Dalian Heavy-duty Machinery and Equipment Plant  
[2192 6647 6850 0992 2623 0892 0617]

Location: Dalian, Liaoning, PRC

Data: Using imported foreign technologies, this plant has built China's first set of small square billet continuous casting machine. A major innovation in modern metallurgical industry, this machine can make molten steel cast into billets, eliminating the process of reheating and rolling the ingots. Consisting of 30 pieces of equipment, each set of machinery can cast 200,000-metric tons of steel billets and save 120,000 metric tons of coal annually. The technology for manufacturing this piece of machinery was obtained from West Germany.

Source: Shenyang LIAONING RIBAO in Chinese 31 Aug 82 p 3

Item: Lanzhou Petrochemical Machinery and Equipment Plant  
[5695 1558 4258 3111 0553 1562 2623 0892 0617]

Location: Lanzhou, Gansu, PRC

Data: This plant has successfully built another type of advanced deep-well drill rig--ZJ45J--with a drilling depth of 4,500 meters. Since this plant designed and built China's first oil drill rig in 1959, it has turned out 12 types of land and offshore drill rigs with different depths. Compared with other domestically produced drill rigs, the latest rig uses sealed winches, hydraulic [water] brake equipment with automatic water table regulator, high power three-cylinder single function mud pump, and a mobile system with a big lift capacity. In June 1980, the plant had successfully trial manufactured the first prototype and put it into trial operation at the Yumen Oilfield. Subsequently, it built 24 ZJ45J drill rigs, and since July 1981, placed them in operation at the Qinghai, Henan, Zhongyuan, Shengli, Dagang, and Huabei oilfields. The 4,500-meter drill rig is a basic type of drill rig needed the most in China's land oilfields.

Source: Gansu GANSU RIBAO in Chinese 30 Sep 82 p 1

Item: Hongya Xian Machinery Plant  
[3163 7161 4005 2623 2750 0617]

Location: Hongya County, Sichuan, PRC

Data: The "Feishui" brand XJ02/W/20 water turbines produced by this plant were exported for the first time to Peru in July this year. Because of its excellent product quality, the plant has found a market for its products in 10 provinces. In 1980, the Sichuan Government awarded prizes to the plant for its high quality products.

Source: Chengdu SICHUAN RIBAO in Chinese 23 Oct 82 p 2

Item: Chongqing Electric Power Condenser Plant  
[6850 1987 7193 0500 7193 1369 0892 0617]

Location: Chongqing, Sichuan, PRC

Data: This plant recently succeeded in producing an HWF 10-0.02 impact average voltage condenser and an NWF1.2-1.8 average voltage damp condenser. The Xi'an Electric Power Condenser Research Institute and the Xi'an Rectifier Research Institute have verified that the technical targets of the condensers have met the designed standards. The production of these condensers will contribute to the development of China's direct current power transmission projects.

Source: Chengdu SICHUAN RIBAO in Chinese 23 Oct 82 p 2

Item: Wuhan Heavy Machine Tool Plant  
[2976 3352 6850 0992 2623 1643 0617]

Location: Wuhan, Hubei, PRC

Data: The 1982 National Exhibition of Machine Tools and Accessories opened in this plant this morning. This is the largest scale exhibition of machine tools and accessories since the founding of the country. Units which are displaying products are some 800 factories in 29 provinces, municipalities and autonomous regions throughout the country. Some 300 machine tools and some 2,000 sets of accessories are on display. Of the products on display, some are advanced machine tools at home and some others reach the world advanced levels. Shen Liechu, vice minister of machine building; Tian Ying, vice governor of Hubei Province; and responsible persons of the China Machine Tool General Company in Wuhan Municipality attended today's opening ceremony. Vice minister Shen Liechu spoke at the opening ceremony. Vice governor Tian Ying cut the ribbon opening the exhibition. The exhibition will last 1 month. During the exhibition, machine tool trade throughout the country will be organized to carry out visiting and studying activities. A 1983 national conference on placing orders for machine tools and accessories will be held.

Source: Wuhan Hubei Provincial Service in Mandarin 1100 GMT 8 Oct 82

Item: Taiyuan Heavy-Duty Machinery Plant  
[1132 0626 6850 0992 2623 2750 0617]

Location: Taiyuan, Shanxi, PRC

Data: This plant has produced China's first electronic computer controlled 2,800mm variable section straightening machine. A technical assessment meeting organized by the Ministry of Machine-Building Industry established that the machine meets world standards in design, manufacture and performance. It is applicable in the production of high-strength, high-precision wedge-shaped sectional aluminum alloy plates in the aviation industry. A Chinese-made DJS-130 electronic computer is used in the control system.

Source: Beijing XINHUA in English 1240 GMT 18 Oct 82 OW

VII. AGRICULTURAL MACHINERY INDUSTRY

Item: Shiyue [October] Tractor Plant  
[0577 2588 2151 2139 2623 0617]

Location: Urumqi, Xinjiang, PRC

Data: This plant, which celebrated its 30th anniversary on 28 September, was founded in 1952. In the past 30 years, the plant has produced more than 6,000 vehicles, more than 8,300 engines, 13,300 tractors of different sizes and more than 70 types of mechanical engineering products. In addition, the plant has provided a large staff of administrative personnel in production techniques for Xinjiang's mechanical engineering industry and has accumulated rich experience in the administration of production techniques. It has made positive contributions to Xinjiang's mechanization of agriculture, communications and transportation.

Source: Urumqi Xinjiang Regional Service in Mandarin 1300 GMT 29 Sep 82 HK

VIII. MISCELLANEOUS INDUSTRIES

Item: Heilongjiang Dacron Plant  
[7815 7893 3068 3321 4858 0617]

Location: Heilongjiang, PRC

Data: Following more than a year of construction work, the main part of this plant's expansion project, filament workshop, is nearing completion. The main items of this expansion project include large plant buildings for the filament workshop, which covers 23,000 square meters, five dormitory units covering nearly 10,000 square meters of floor space, as well as a finished goods warehouse and a garage. After the completion of the filament workshop next year, the first production line will be able to turn out annually 2,000 metric tons of dacron filaments, sufficient to weave 12 million meters of dacron knitted materials. This expansion project will enable the knitwear plants in Heilongjiang to be fully self-sufficient in the supply of materials. A small portion of the products turned out by this project can also be supplied to other provinces and municipalities.

Source: Harbin HEILONGJIANG RIBAO in Chinese 19 Sep 82 p 2

Item: Shanghai Bicycle Plant  
[0006 3189 5261 5887 6508 0617]

Location: Shanghai, PRC

Data: Workers here have turned out China's first 30,000 ampere direct current stitch welding machine, filling a gap in the country's direct current stitch welding technology. All the parts and materials used on the machine are domestically made. This "breakthrough" will eliminate the faults of uneven surface on the bicycle rims caused by alternate current welding.

Source: Shanghai JIEFANG RIBAO in Chinese 11 Sep 82 p 2

Item: Huafeng Paper Mill  
[5478 0023 6644 4786 0617]

Location: Hangzhou, Zhejiang, PRC

Data: A new-type paper-making machine was put into operation at this mill on 5 October. Designed, built, and installed by the workers themselves, this new machine can produce for this mill 20 percent more copy papers for export and earn for the state 2 million yuan in profits and taxes, making it possible to pay back the loan for this piece of machinery in 2.5 years.

Source: Hangzhou ZHEJIANG RIBAO in Chinese 10 Oct 82 p 1

Item: Dalian Cement Plant  
[2192 6647 3055 3136 0617]

Location: Dalian, Liaoning, PRC

Data: Beginning August 1982, the Daqing Oilfield has begun trial employing an oil well-solidifying material--Grade A oil well cement--successfully trial produced by this plant. China has been importing this important cementing material from abroad. The successful trial production and large-scale production of Grade A oil well cement will fill a gap in China's building materials industry.

Source: Shenyang LIAONING RIBAO in Chinese 12 Oct 82 p 1

Item: Jixi Oil Processing Plant  
[7179 6007 0455 1444 0617]

Location: Jixi, Heilongjiang, PRC

Data: This plant was recently put into operation. Construction of this project began in 1980. Designed, built, and installed by the workers themselves, the plant has the capacity to process 30,000 metric tons of soybeans annually. It employs the "soaking" method which produces more oil than the pressing method.

Source: Harbin HEILONGJIANG RIBAO in Chinese 18 Sep 82 p 1

IX. PHOTOGRAPHS OF INDUSTRIAL FACILITIES

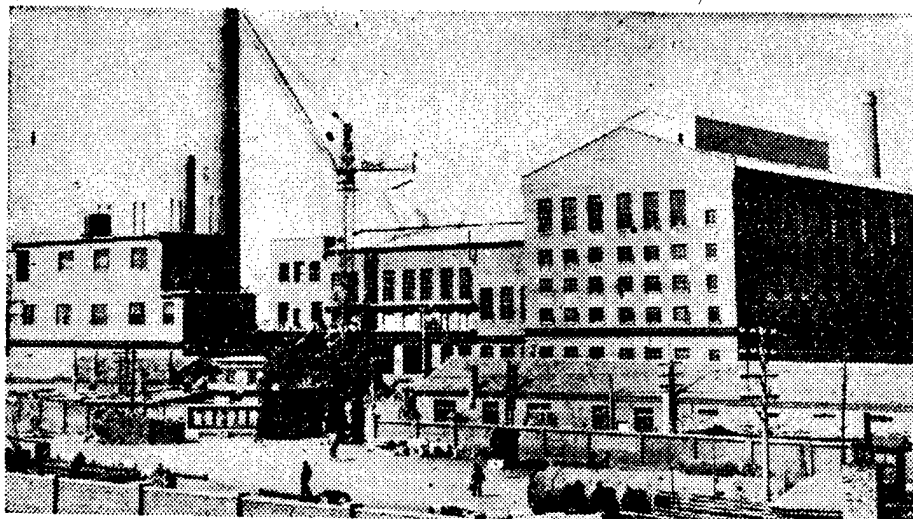


Fig. 1 A view of another medium-sized glass factory recently completed in China. Located in Fuxin City, Liaoning, this Chinese designed and built factory has a designed annual plate output of 920,000 standard crates.

[Source: Shenyang LIAONING RIBAO in Chinese 14 Oct 82 p 1]

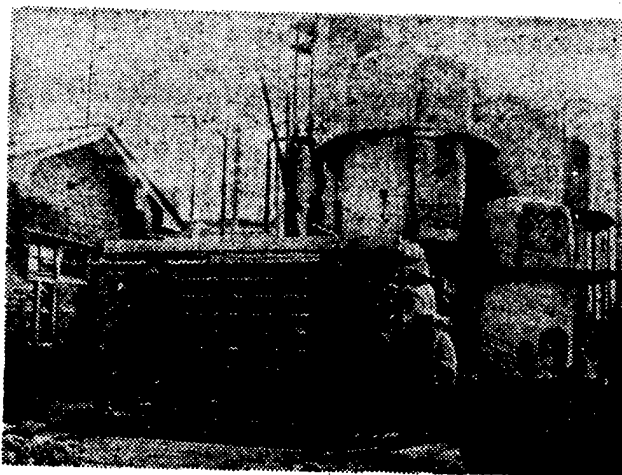


Fig. 2 Photograph showing the Hechuan Xian Nitrogenous Fertilizer Plant in Sichuan Province undergoing repair.

[Source: Chengdu SICHUAN RIBAO in Chinese 23 Oct 82 p 2]

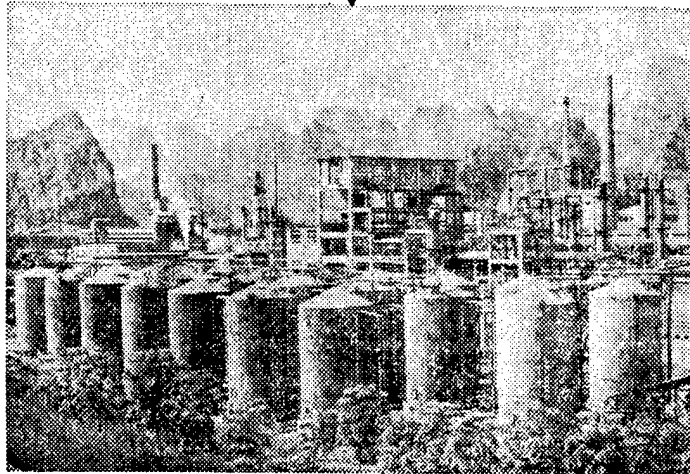


Fig. 3 Photo of the Yishan Vinylon Plant, one of China's key construction projects, in Guangxi Zhuang AR. It is now in partial operation.

[Source: Beijing GONGREN RIBAO in Chinese 22 Aug 82 p 2]

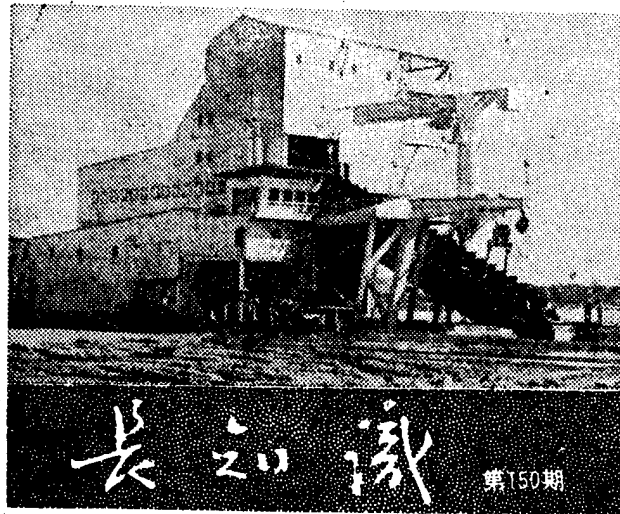


Fig. 4 Photograph of China's largest gold mining vessel. It is capable of extracting 40 ounces of free gold a day.

[Source: Beijing ZHONGGUO QINGNIAN BAO in Chinese 9 Oct 82 p 4]

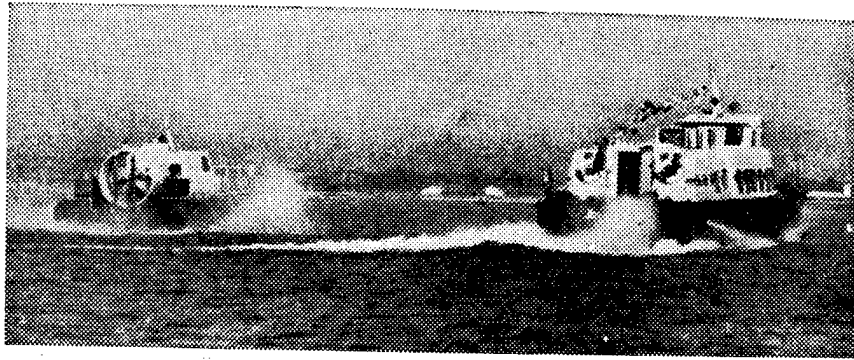


Fig. 5 Photo shows two Chinese-designed and -built air cushion craft operating at full speed in Lake Dianshan, Shanghai. Vessel on the right is a side-wall air cushion passenger ship. Vessel on the left is a full [cushion] lift AC craft, known as "air cushion jeep."

[Source: Shanghai JIEFANG RIBAO in Chinese 19 Oct 82 p 1]

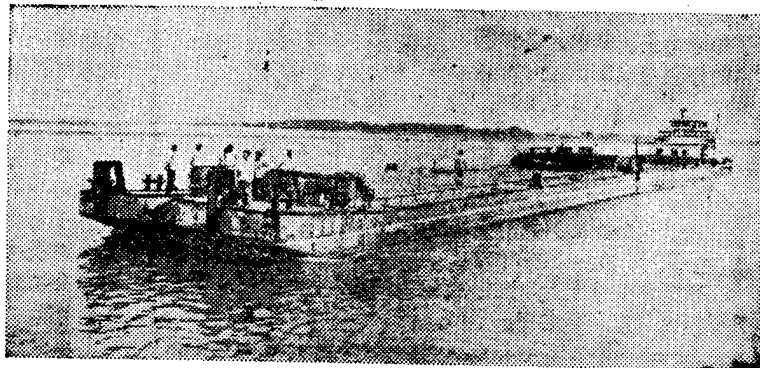


Fig. 6 View of a 250-ton air cushion barge built by the Heilongjiang Water Transport Research Institute

[Source: Harbin HEILONGJIANG RIBAO in Chinese 5 Aug 82 p 2]

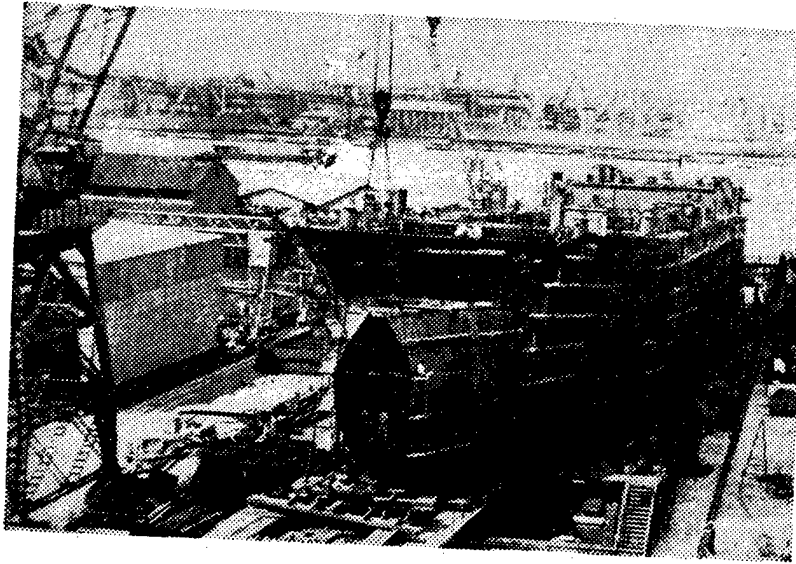


Fig. 7 A 12,300-ton container ship under construction at the Shanghai Shipyard. Construction of five 10,000-ton class freighters for export is in full swing at this shipyard.

[Source: Shanghai JIEFANG RIBAO in Chinese 24 Sep 82 p 1]

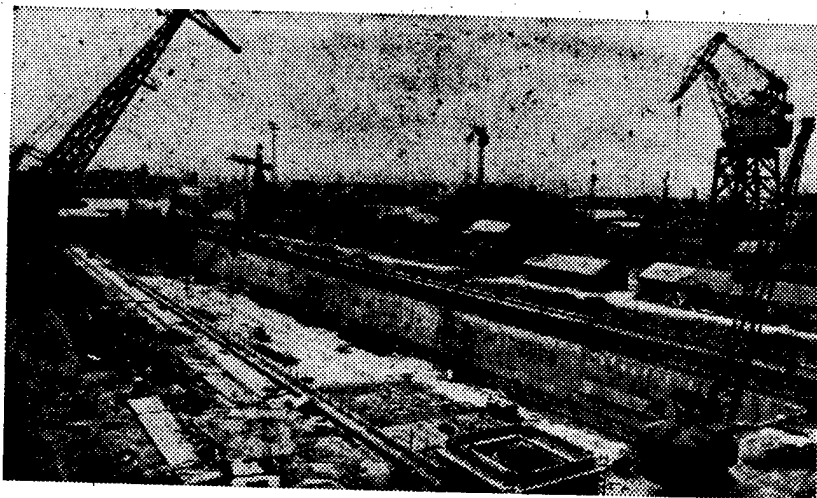


Fig. 8 Full view of a 50,000-ton-class drydock at the Jiangnan Shipyard in Shanghai

[Source: Shanghai JIEFANG RIBAO in Chinese 26 Sep 82 p 1]

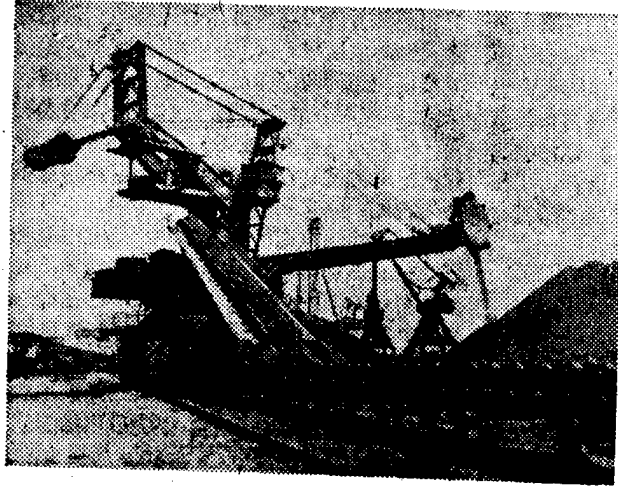


Fig. 9 A DQLK30 stacking machine designed and built by the Dalian Heavy Machinery and Equipment Plant in Liaoning. The largest bulk cargo loading and unloading equipment in China, this piece of equipment has a capacity of 1,250-2,000 metric tons per hour.

[Source: Beijing GUANGMING RIBAO in Chinese 22 Sep 82 p 3]

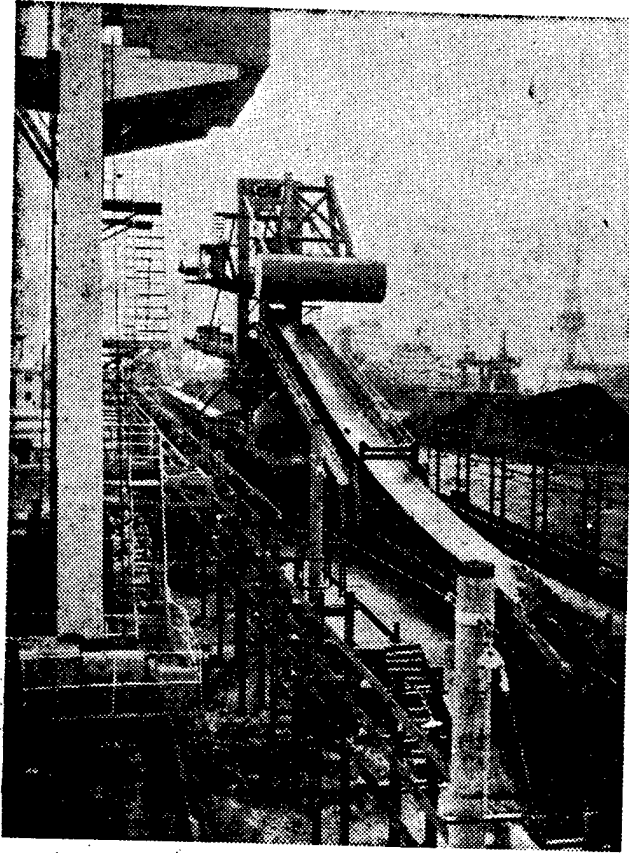


Fig. 10 The second phase renovation project of the No 8 pier at the Qinhuangdao Port, Hebei Province, has been completed. After the renovation, the No 8 pier will be equipped with a coal stacking machine capable of stacking 3,000 metric tons of coal per hour and four bucket-wheel materials handling machines, with which a 10,000-ton vessel can be loaded in only 6 hours.

[Source: Beijing GONGREN RIBAO in Chinese 13 Aug 82 p 1]

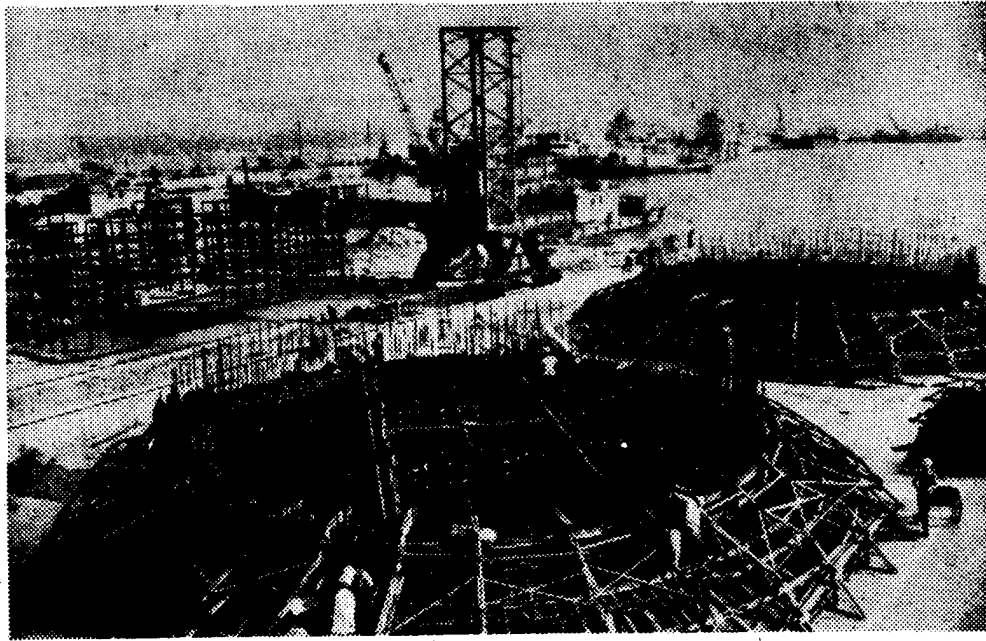


Fig. 11 Construction of the Shijiu Port in Shandong, a large deep-sea port, is proceeding smoothly. As of mid-September, 90 percent of the annual construction plan has been completed.

[Source: Beijing RENMIN RIBAO in Chinese 4 Oct 82 p 1]

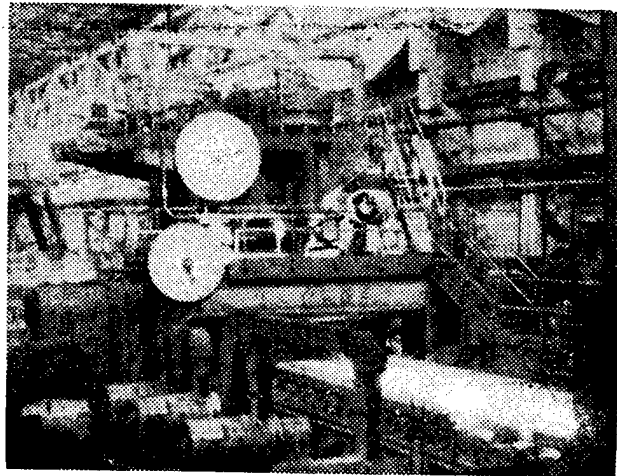


Fig. 12 Photo of a rough rolling machine, part of a 1.7 meter rolling machine unit designed and built by Chinese engineers, now in operation at the Benxi Iron and Steel Company

[Source: Shenyang LIAONING RIBAO in Chinese 26 Sep 82 p 1]

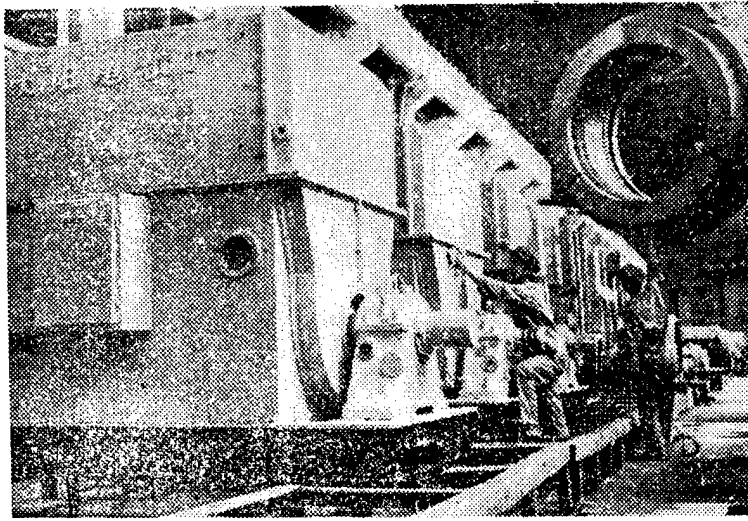


Fig. 13 A high-efficiency and fuel-saving YK1800KW high-speed electromotor has been successfully trial manufactured by the Shenyang City Electromachinery Plant. Each electromotor can save 324,000 kilowatt hours of electricity annually.

[Source: Shenyang LIAONING RIBAO in Chinese 12 Oct 82 p 1]

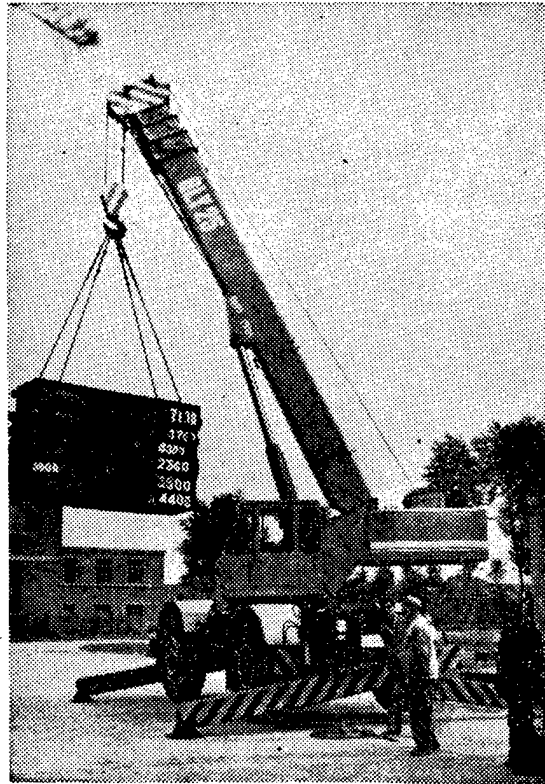


Fig. 14 Photo of a 25-ton fully hydraulic crane built by the Harbin Construction Machinery Plant in operation. The cost of building this crane by this plant was only 300,000 yuan, as against the price of 600,000-700,000 yuan for an imported 25-ton fully hydraulic cross country tired crane.

[Source: Harbin HEILONGJIANG RIBAO in Chinese 1 Oct 82 p 1]

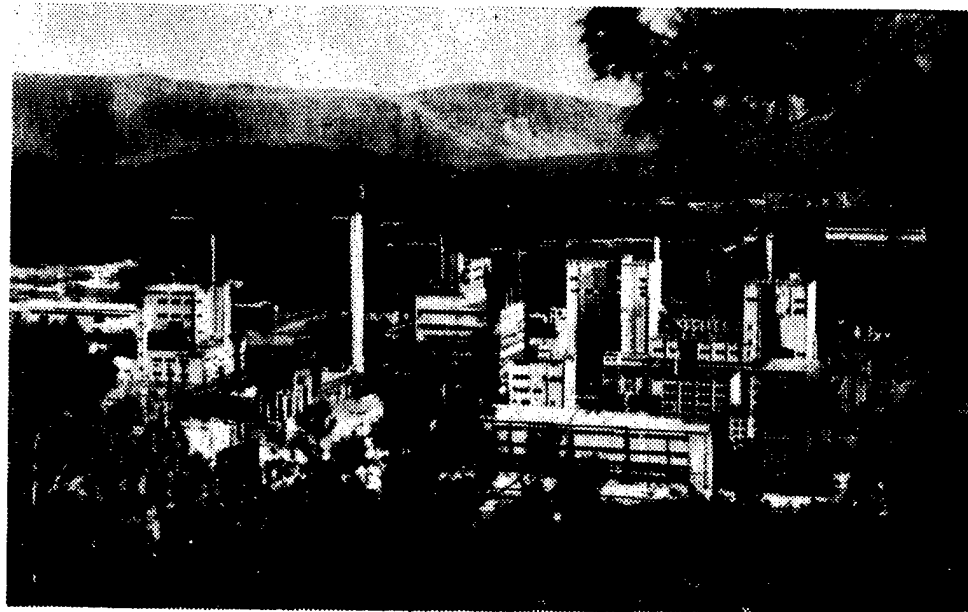


Fig. 15 China's largest detergent raw materials plant--Kunming Tertiary Sodium Phosphate Plant in Yunnan has entered into the equipment installation stage. It is expected to be completed in 1983.

[Source: Beijing RENMIN RIBAO in Chinese 6 Oct 82 p 1]

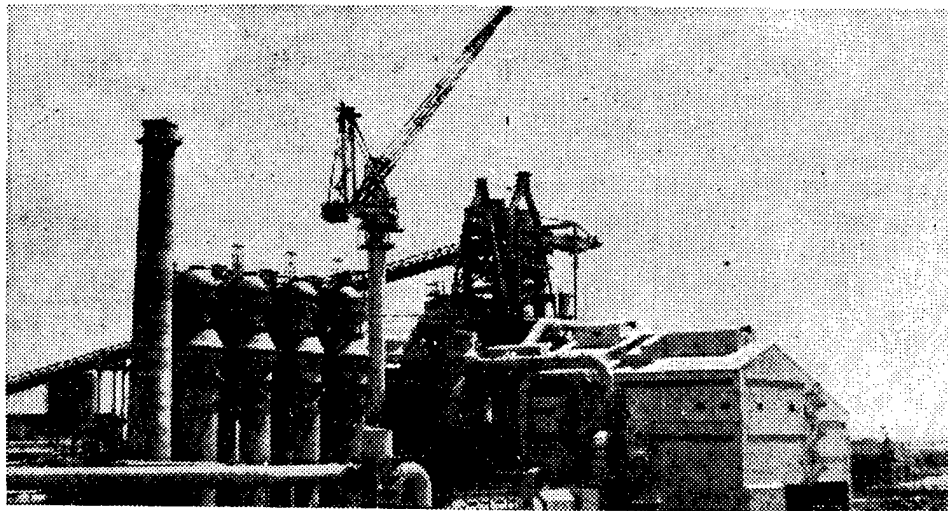


Fig. 16 Recent photo of Baoshan Iron and Steel Company's No 1 Blast Furnace

[Source: Shanghai JIEFANG RIBAO in Chinese 6 Sep 82 p 2]

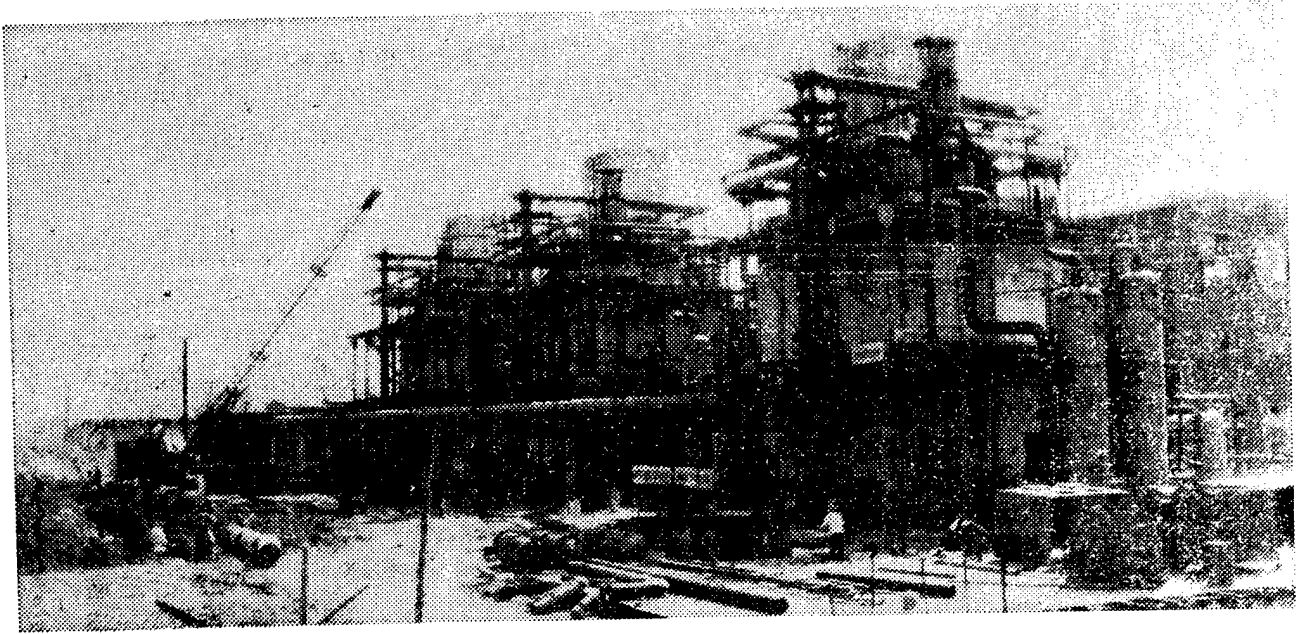


Fig. 17 The Shenyang Pressure Gasification Plant is now under construction. Trial run is scheduled for the first half of 1983. When completed, this project will provide coal gas to 250,000 additional households in Shenyang City, saving the state 154,000 metric tons of standard coal and 50,000 metric tons of heavy oil annually.

[Source: Shenyang LIAONING RIBAO in Chinese 2 Oct 82 p 2]

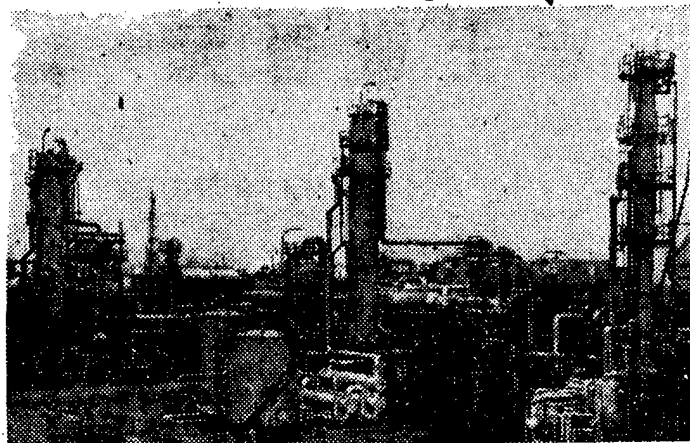


Fig. 18 Chuandong Gas Field in Sichuan, China's largest natural gas field, produces 6 million cubic meters of natural gas daily, which are transported through the newly built pipeline network to more than 100 consumers in Sichuan, Guizhou and Yunnan. Photo shows a desulfurization plant in the Chuandong mining zone.

[Source: Shanghai JIEFANG RIBAO in Chinese 12 Aug 82 p 3]

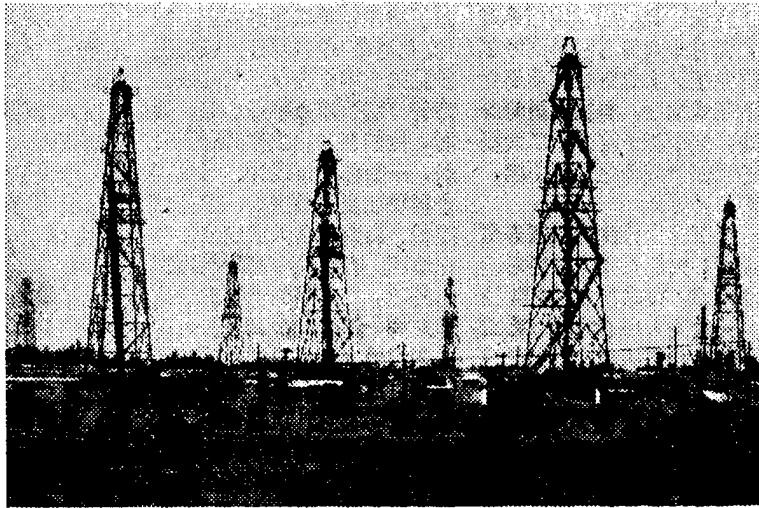


Fig. 19 The Daqing Oilfield has produced 600 million metric tons of crude oil and earned 57 billion yuan for the state since its inception 22 years ago.

[Source: Shanghai JIEFANG RIBAO in Chinese 3 Oct 82 p 2]

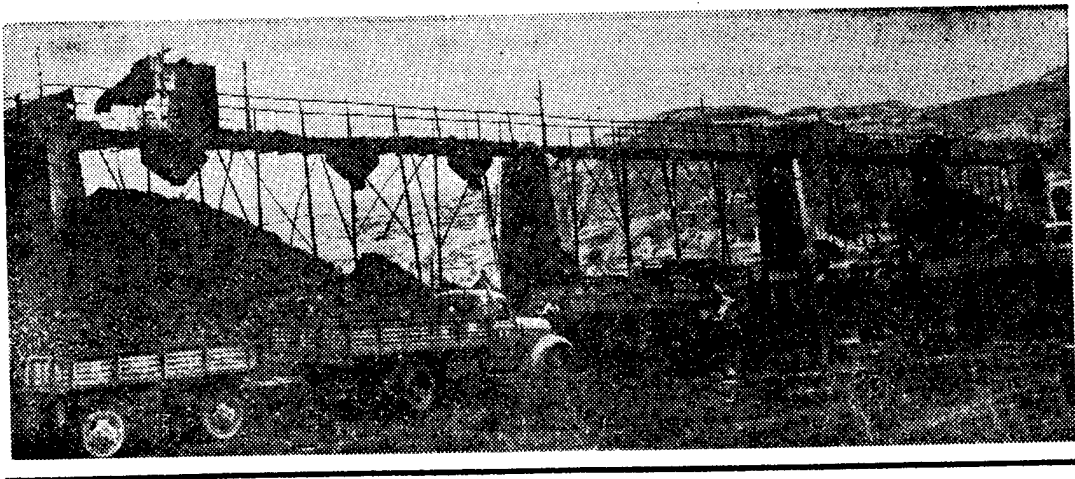


Fig. 20 Coal is being loaded onto trucks in front of the coal-dressing platform at the shaft opening of the Diantou Coal Mine in Huangling County, Shaanxi.

[Source: Xi'an SHAANXI RIBAO in Chinese 5 Oct 82 p 1]

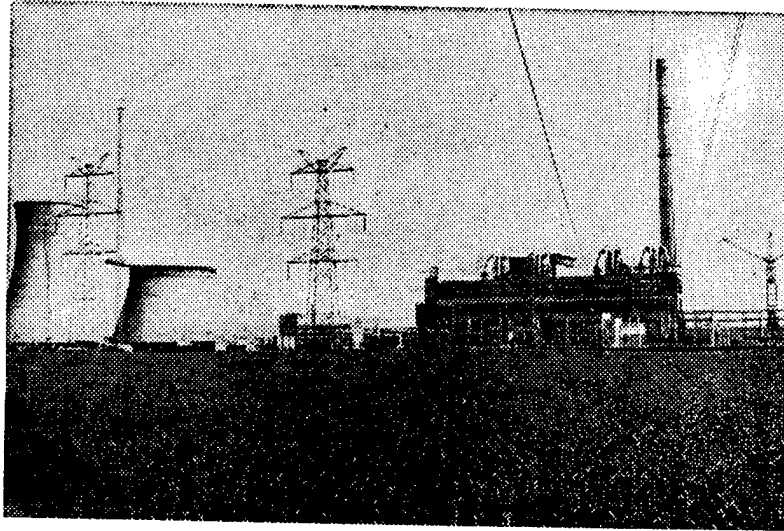


Fig. 21 Installation of major equipment for the Jinzhou Power Plant's first 200,000-KW steam turbine generating unit has been completed. This generating unit is expected to be incorporated into the power transmission network in November this year. One of the key state construction projects, the Jinzhou Power Plant has an installed capacity of 1.20 million kilowatts.

[Source: Shenyang LIAONING RIBAO in Chinese 22 Sep 82 p 1]

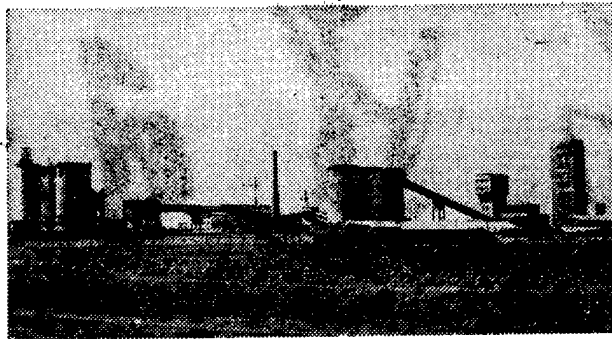


Fig. 22 The expansion project of the Zhuxianzhuang Coal Mine in Huaibei has been completed and is expected to go into operation shortly. Located in the eastern suburbs of Suzhou City, Anhui, the large coal shaft has a designed annual coal output capacity of 1.2 million metric tons and a coal reserve of 240 million metric tons.

[Source: Fuzhou FUJIAN RIBAO in Chinese 1 Oct 82 p 2]

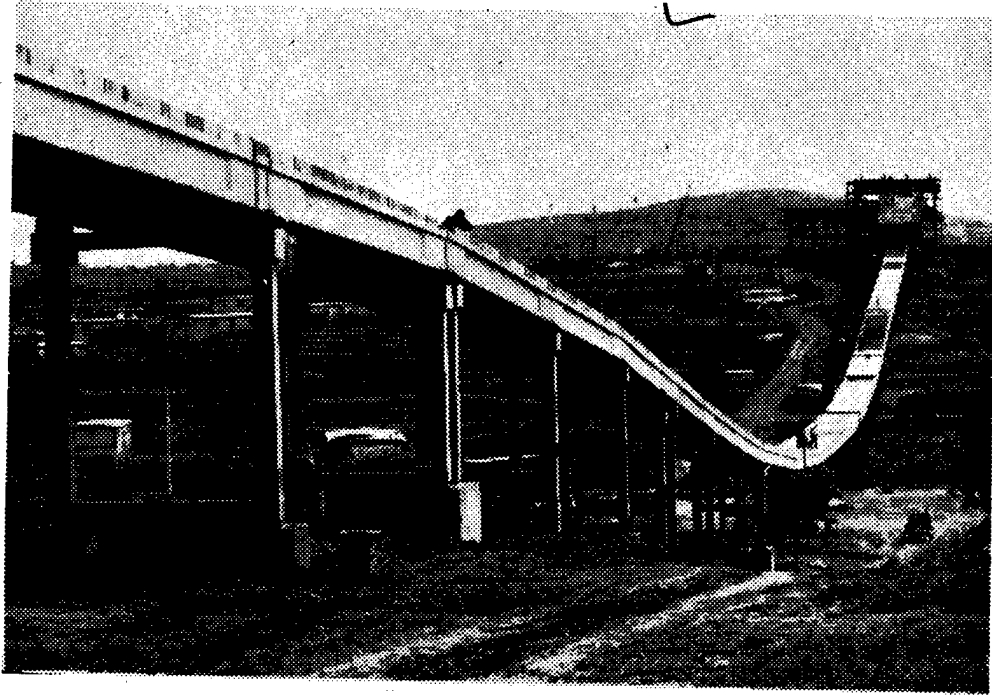


Fig. 23 A 9.8-kilometer-long belt conveyor of the newly built Jidong Cement Plant in Tangshan, Hebei

[Source: Beijing RENMIN RIBAO in Chinese 9 Oct 82 p 4]

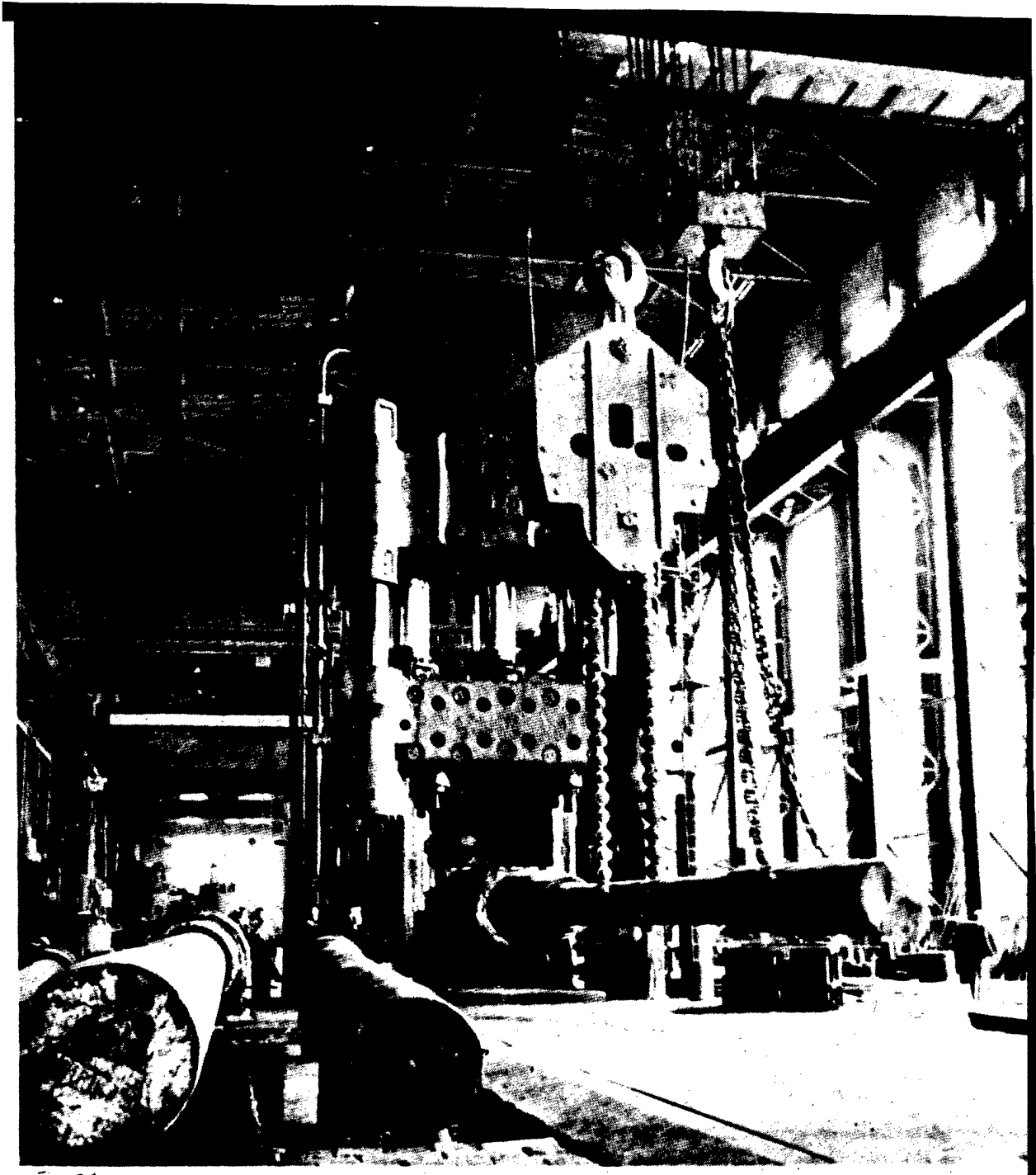


Fig. 24 A 12,000-ton free forging hydraulic press built by the Fularji Heavy Machinery Plant No 1 in Heilongjiang

[Source: Harbin HEILONGJIANG HUABAO [HEILONGJIANG PICTORIAL] in Chinese No 4, 1982 p 29]

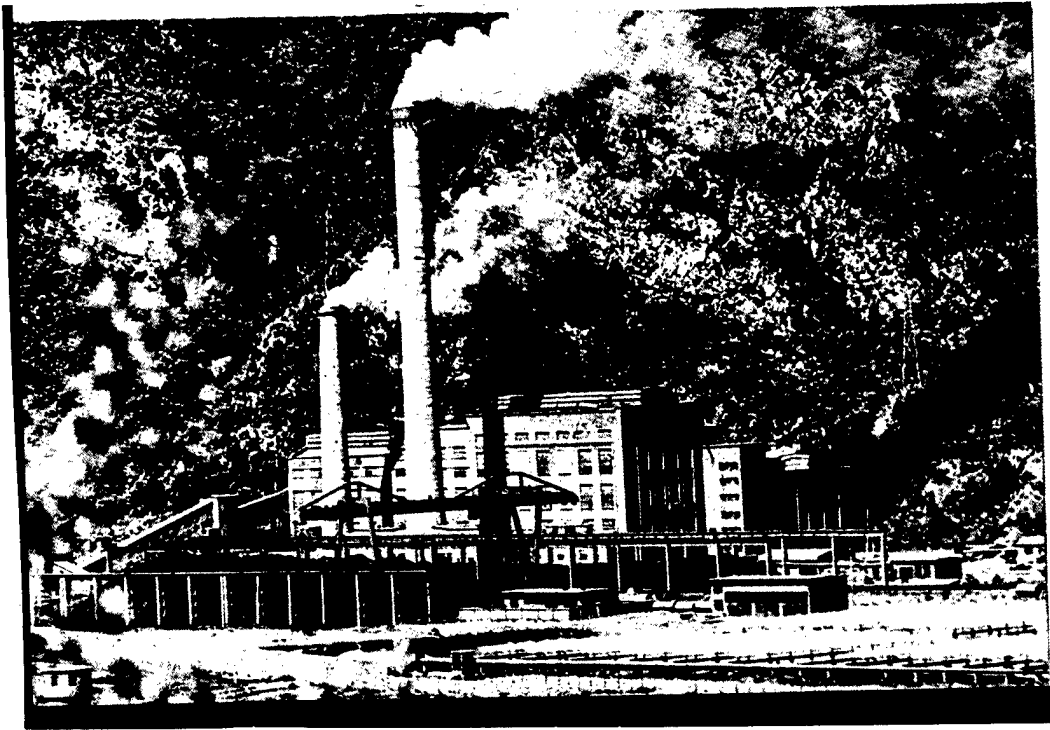


Fig. 25 Photograph of the Yushuchuan Power Plant in eastern Jilin Province

[Source: Changchun JILIN HUABAO [JILIN PICTORIAL] in Chinese No 4, 1982 p 2]

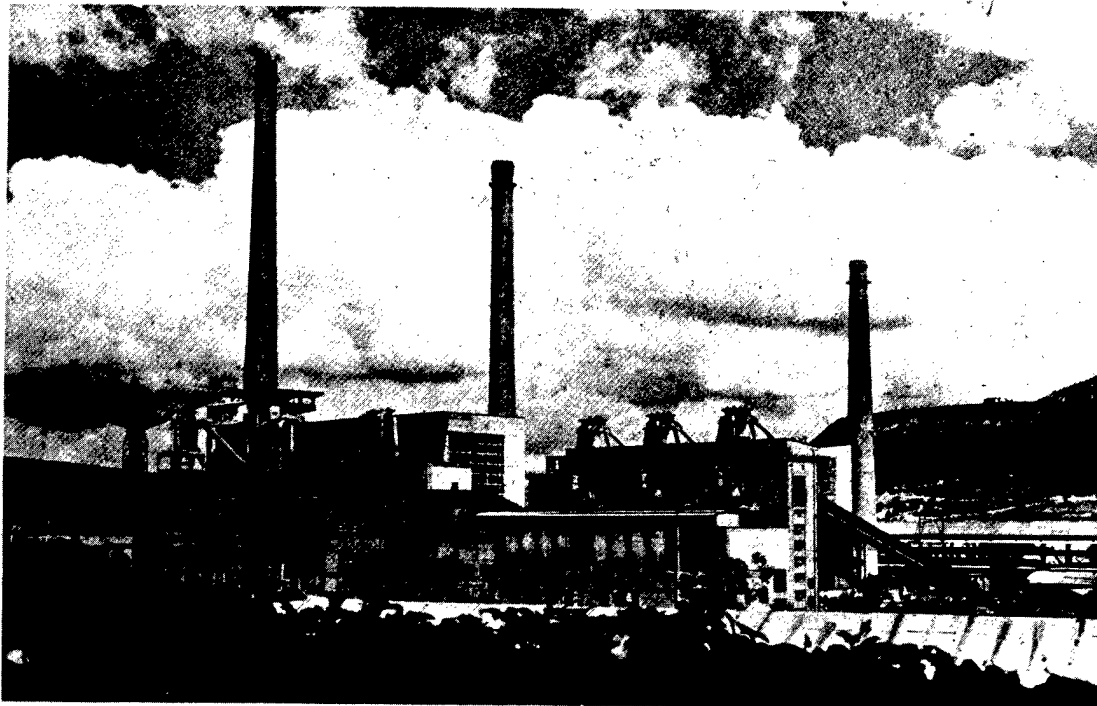


Fig. 26 View of the Heshan Power Plant in Guangxi. With an installed capacity of 325,000 kilowatts, this power plant supplies electric power to the whole region

[Source: Nanning GUANGXI HUABAO [GUANGXI PICTORIAL] in Chinese No 4, 1982 p 7]

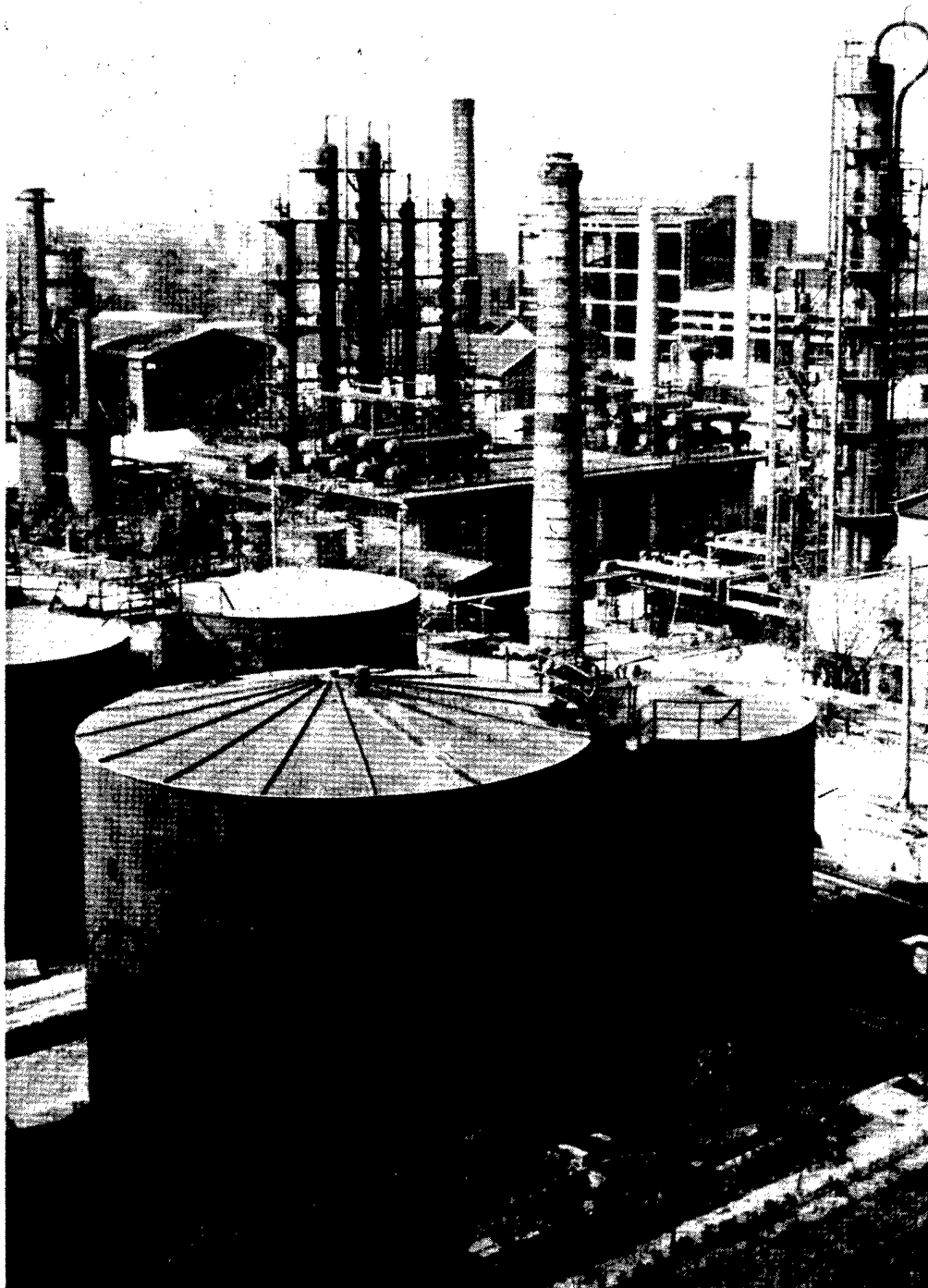
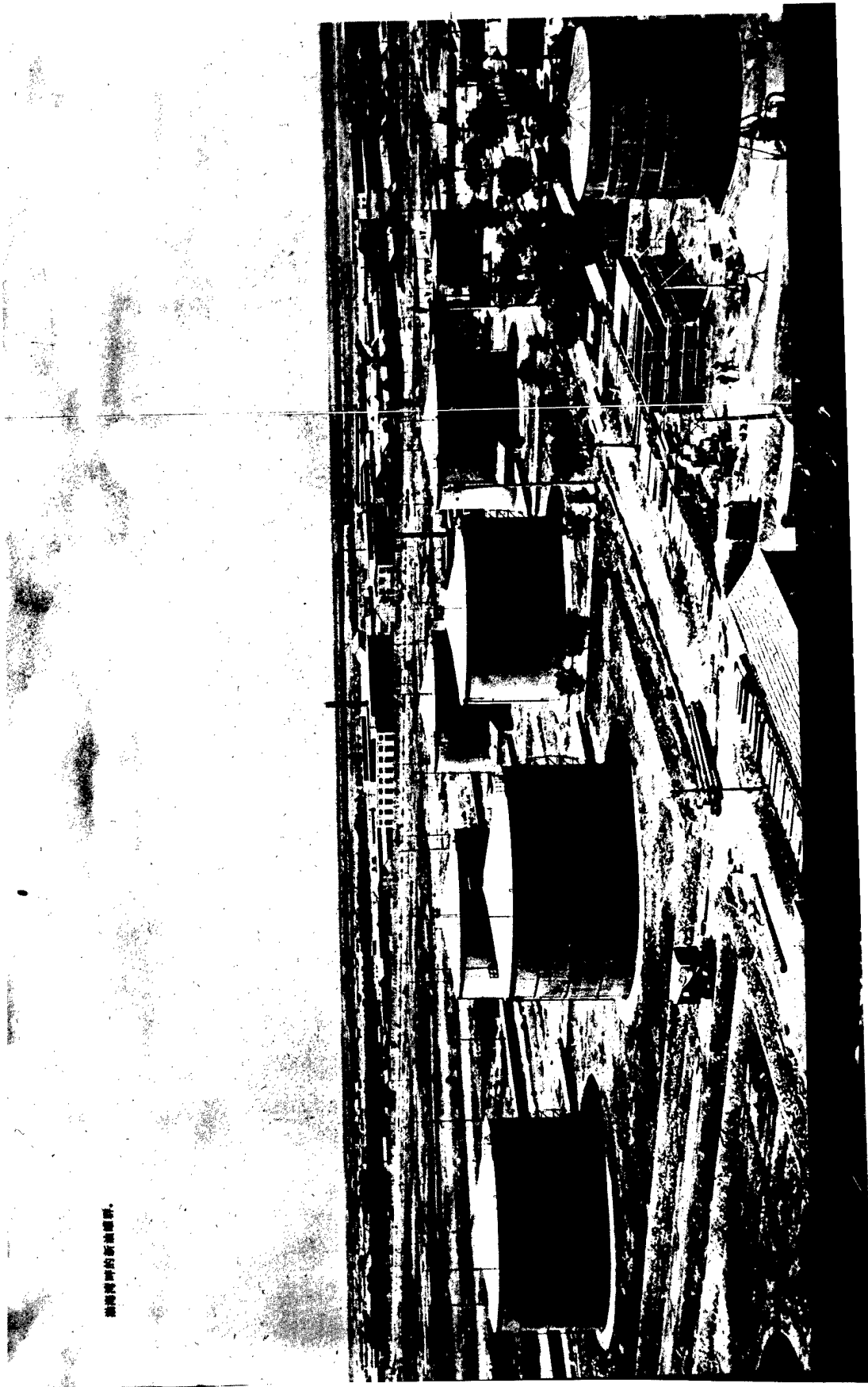


Fig. 27 A section of the Nanchong Oil Refinery in Sichuan

[Source: Chengdu SICHUAN HUABAO [SICHUAN PICTORIAL] in Chinese No 4,  
1982 p 20]



渤海湾的新油罐群。

Fig. 28 Photograph of a group of new oil tanks along the shores of Pohai Gulf.

[Source: Jinan SHANDONG HUABAO [SHANDONG PICTORIAL] in Chinese No 9, 1982 pp 24-25]



Fig. 29 View of the sugar-processing workshop of the Gaomi Sugar Mill, the largest sugar refinery in Shandong

[Source: Jinan SHANDONG HUABAO [SHANDONG PICTORIAL] in Chinese No 4, 1982 p 32]



Fig. 30 Full view of the Puyuan Construction Machinery Plant in Changde City, Hunan Province

[Source: Hong Kong ZHONGGUO JIXIE [CHINA MACHINERY] in Chinese and English No 2, 1982, inside frontcover]

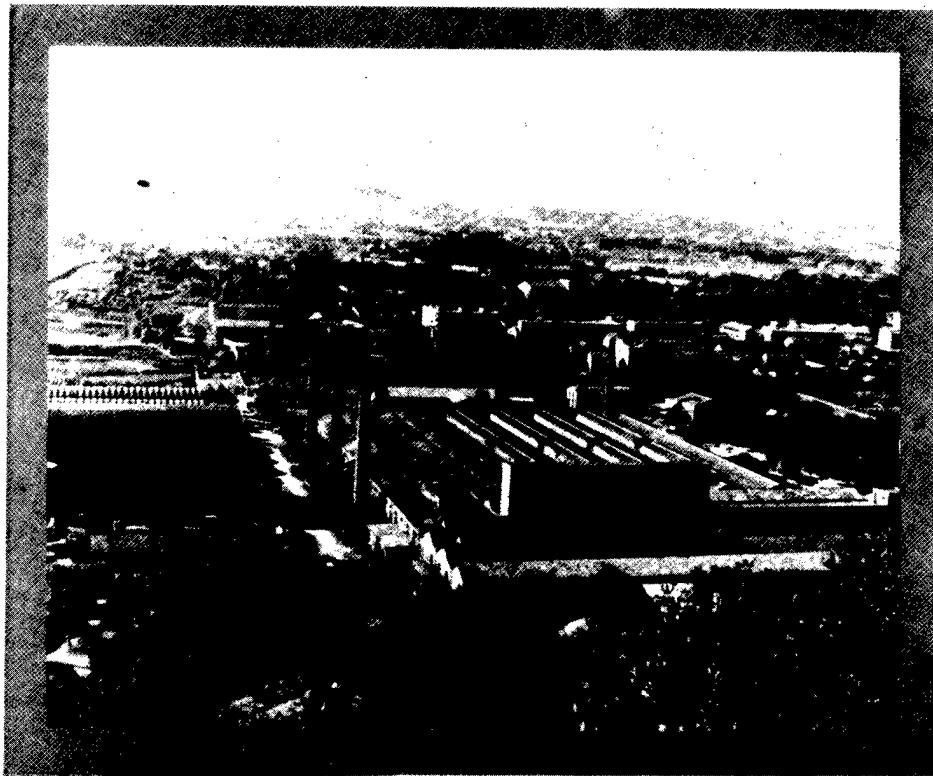


Fig. 31 A sectional view of the Liling Electro-Ceramic Plant in Liling of Hunan Province

[Source: Hong Kong ZHONGGUO JIXIE [CHINA MACHINERY] in Chinese and English No 2, 1982 p 7]

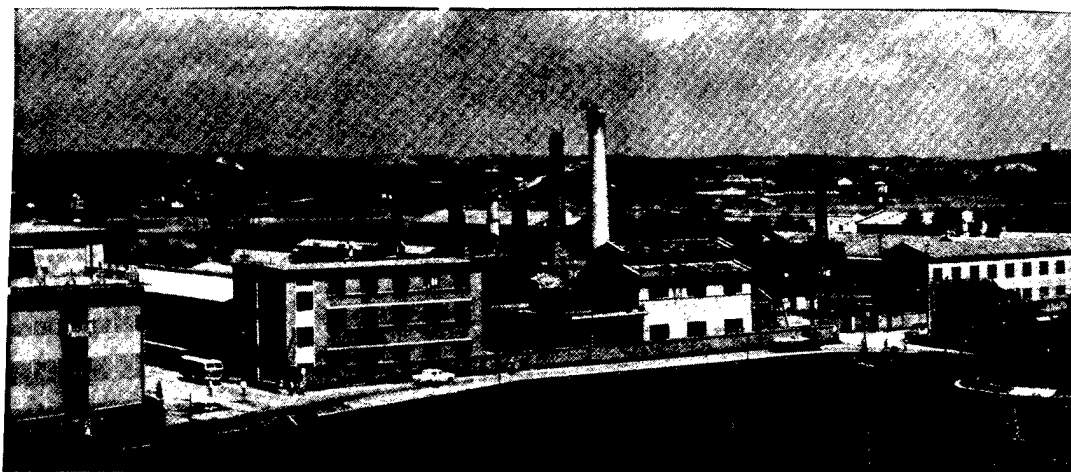


Fig. 32 Photo of the Zhuzhou Spark Plug Plant in Zhuzhou City, Hunan

[Source: Hong Kong ZHONGGUO JIXIE [CHINA MACHINERY] in Chinese and English No 2, 1982 p 24]



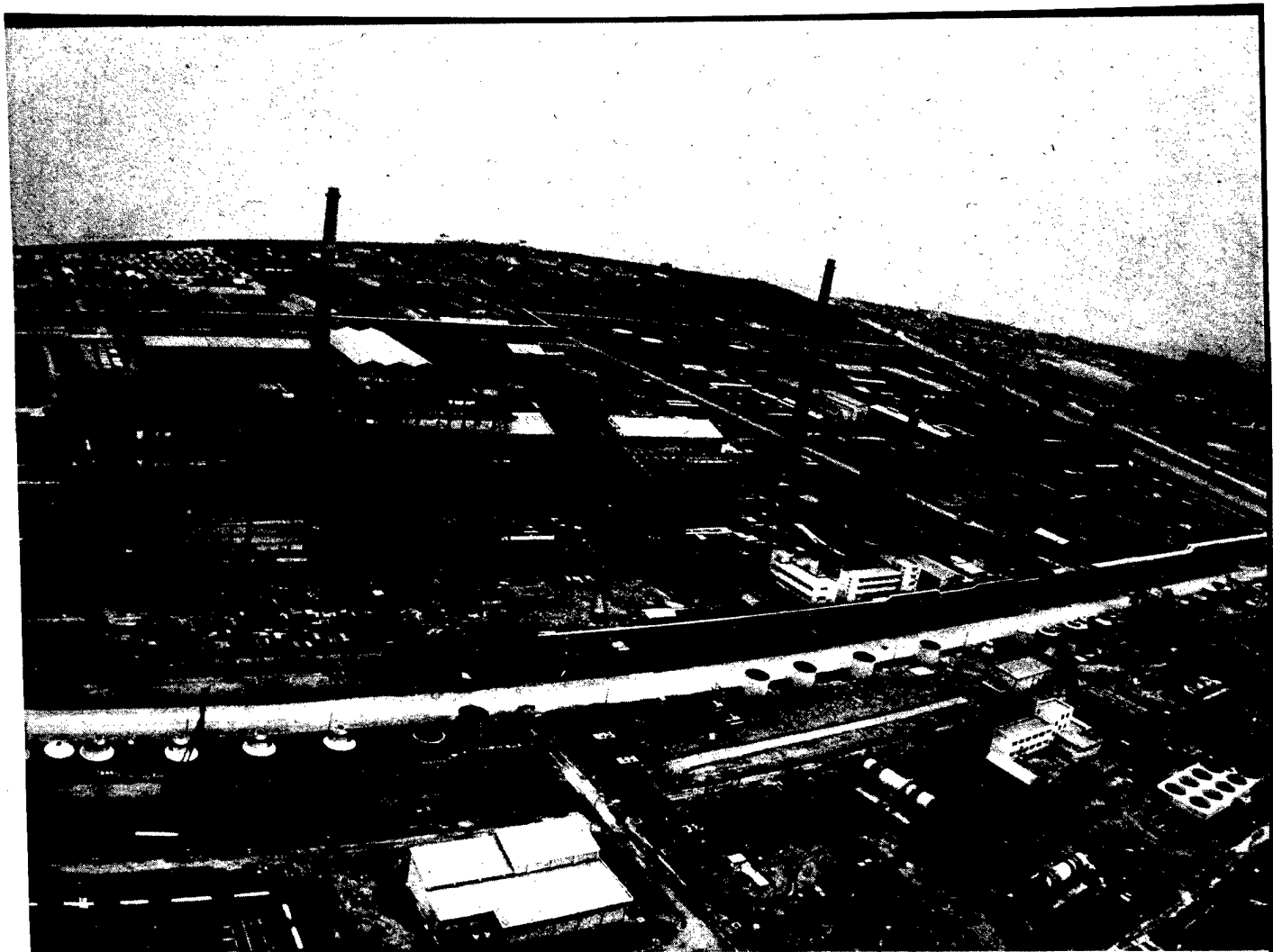
Fig. 33 A section of the Hengyang Tractor Plant's processing workshop.

[Source: Hong Kong ZHONGGUO JIXIE [CHINA MACHINERY] in Chinese and English No 2, 1982 p 29]



Fig. 34 A bird eye's view of the Baoshan General Iron and Steel Mill's construction site in Shanghai

[Source: Beijing ZHONGGUO HUABAO [CHINA PICTORIAL] in Chinese No 10, 1982 pp 24-25]



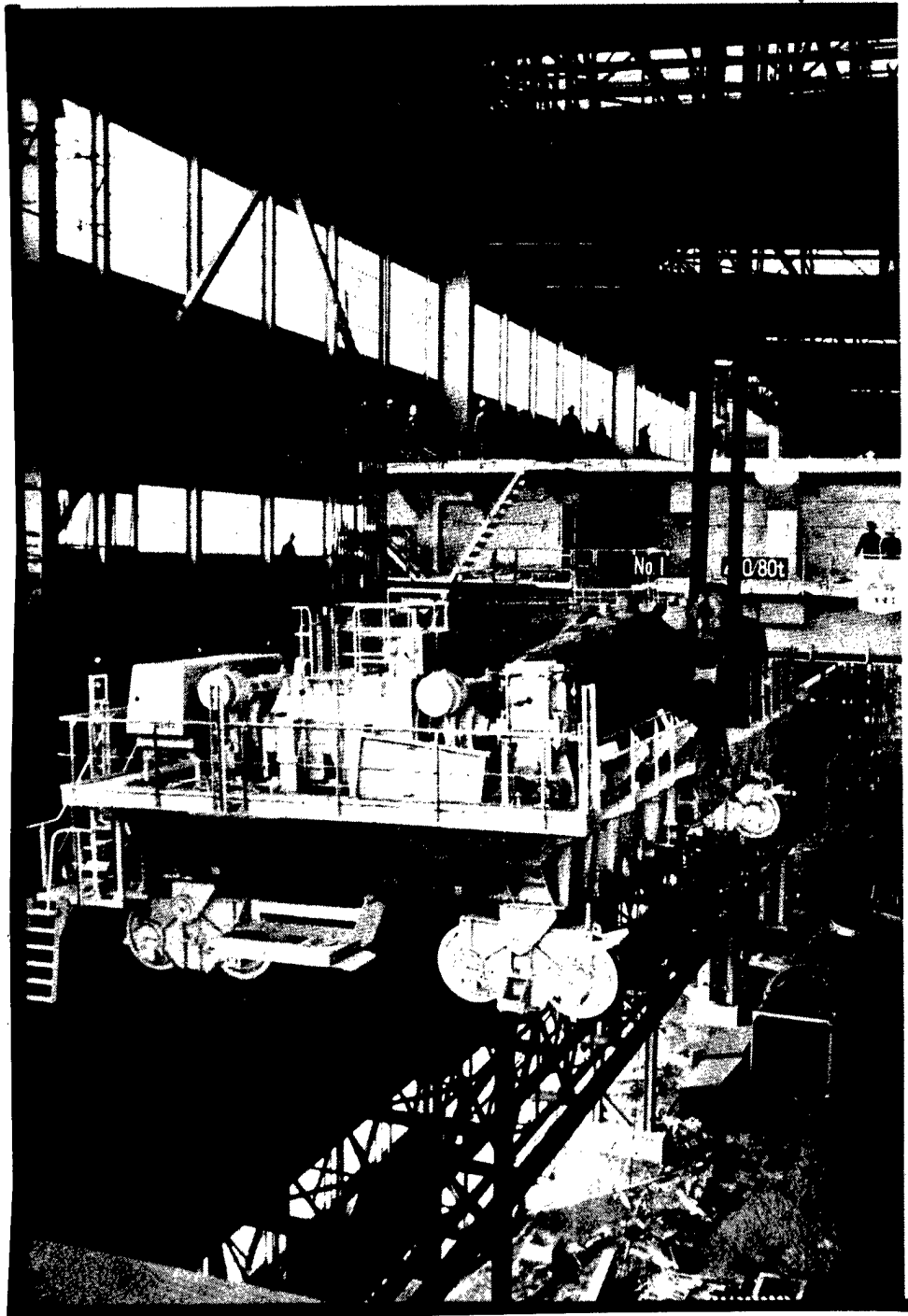


Fig. 35 A steel smelting plant of the Baoshan Iron and Steel Complex in Shanghai

[Source: Beijing ZHONGGUO HUABAO [CHINA PICTORIAL] in Chinese No 10,  
1982 p 24]

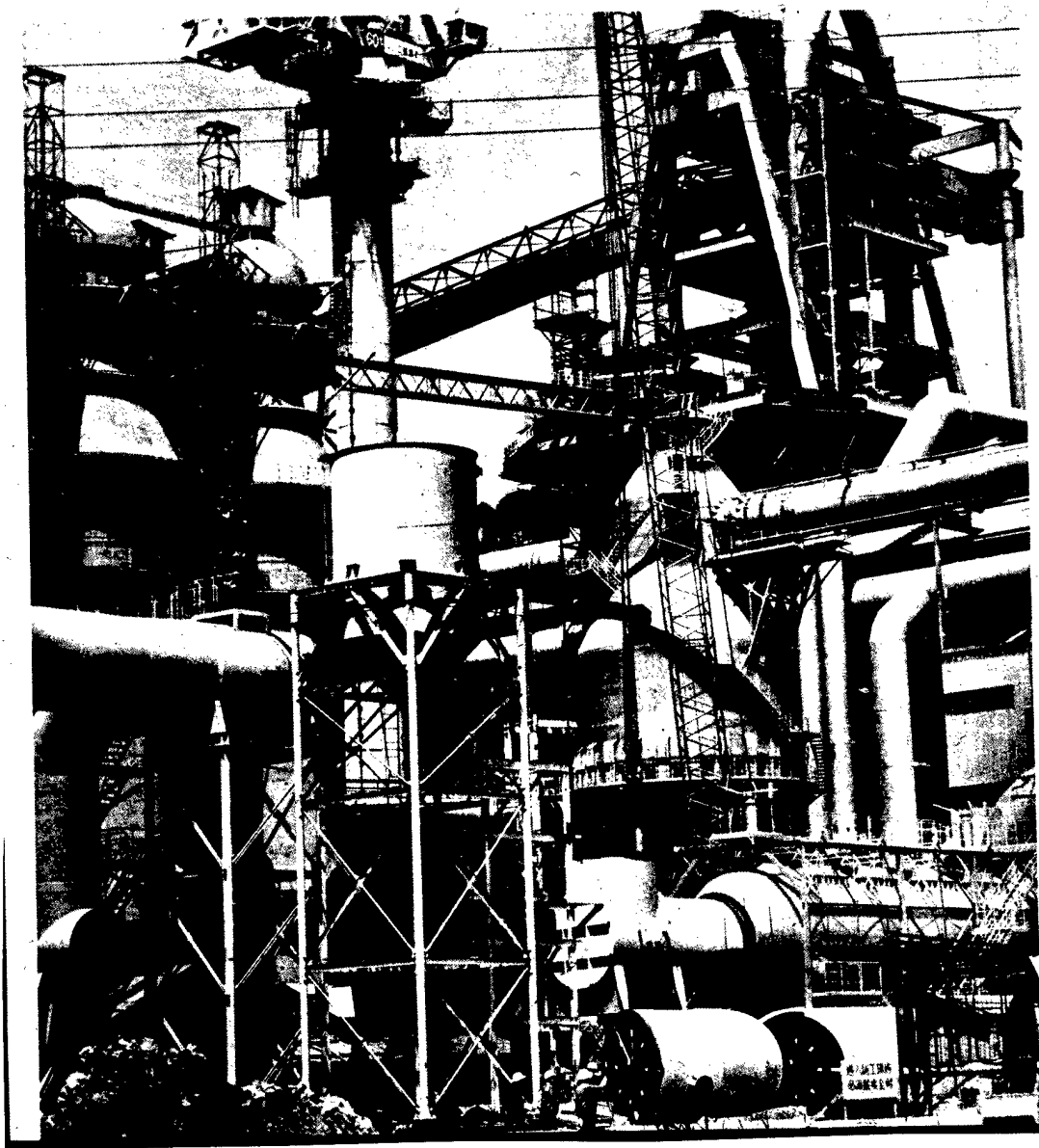


Fig. 36 The 4,063 cubic meter blast furnace of the Baoshan Iron and Steel Complex

[Source: Beijing ZHONGGUO HUABAO [CHINA PICTORIAL] in Chinese No 10,  
1982 pp 24-25]

CSO: 4013/47

END