



CENTER FOR COASTAL STUDIES, 0209  
SCRIPPS INSTITUTION OF OCEANOGRAPHY

9500 GILMAN DRIVE  
LA JOLLA, CALIFORNIA 92093-0209  
PHONE: (619) 534-4333  
FAX: (619) 534-0300

September 22, 1998

Dr. Thomas Kinder (3)  
Scientific Officer, Code 321CD  
Office of Naval Research  
Ballston Centre Tower One  
800 North Quincy Street  
Arlington, VA 22217-5660

Administrative Grants Officer (1)  
Office of Naval Research  
San Diego Regional Office  
4520 Executive Dr. Ste. 300  
San Diego, CA 92121-3019

Director, Naval Research Laboratory (1)  
Attn: Code 2627  
4555 Overlook Drive  
Washington, DC 20375-5326

Defense Technical Information Center (2)  
8725 John J. Kingman Rd., Ste. 0944  
Ft. Belvoir, VA 22060-6218

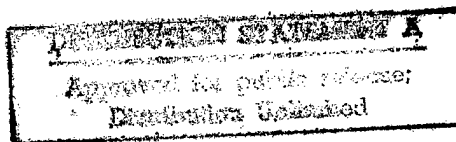
Office of Naval Research (1)  
Ballston Centre Tower One  
Attn: ONR OCCC1, Mr. William McCarthy  
800 North Quincy Street  
Arlington, VA 22217-5660

SUBJECT: Final Technical Report  
ONR Award No. N00014-96-1-0041  
PI: Dr. Thomas C. Lippmann

Enclosed for your records is the final technical report for the above referenced grant.

Sincerely,

Ann F. Dunbar  
Contract & Grant Assistant  
SIO, UCSD



Cc: Ms. Nancy Wilson  
Dr. Thomas C. Lippmann

**REPORT DOCUMENTATION PAGE**

Form Approved

OMB No. 0704-0188

Public reporting burden for this collection of information is estimated to average one hour per response, including the time for reviewing instructions, searching existing data sources, gathering and maintaining the data needed, and completing and reviewing the collection of information. Send comments regarding this burden estimate or any other aspect of this collection of information, including suggestions for reducing the burden to Washington Headquarters Services, Directorate for Information Operations and Reports, 1215 Jefferson Davis Highway, Suite 1204, Arlington, VA 22202-4302, and to the Office of Management and Budget, Paperwork Reduction Project (0704-0188), Washington, DC 20503.

1. AGENCY USE ONLY (Leave blank)		2. REPORT DATE 9/16/98	3. REPORT TYPE AND DATES COVERED Final Technical Report / 10/1/95 - 9/30/97	
4. TITLE AND SUBTITLE Wave Surface and Bottom Boundary Layers in the Nearshore			5. FUNDING NUMBERS ONR N00014-96-1-0041	
6. AUTHOR(S) Dr. Thomas C. Lippmann				
7. PERFORMING ORGANIZATION NAME(S) AND ADDRESS(ES) Scripps Institution of Oceanography, Center for Coastal Studies 9500 Gilman Drive La Jolla, CA 92093-0209			8. PERFORMING ORGANIZATION REPORT NUMBER	
9. SPONSORING/MONITORING AGENCY NAME(S) AND ADDRESS(ES) Office of Naval Research Attn: Dr. Thomas Kinder 800 North Quincy Street Arlington, VA 22217-5500			10. SPONSORING/MONITORING AGENCY REPORT NUMBER	
11. SUPPLEMENTARY NOTES				
12a. DISTRIBUTION/AVAILABILITY STATEMENT Unrestricted			12b. DISTRIBUTION CODE	
13. ABSTRACT (Maximum 200 words) This grant consisted of two components, development of new instruments followed by three field investigations of the dynamics of the wave surface and bottom boundary layers in shallow nearshore waters. Standard (daytime) and intensified (night-time) video systems were developed and tested in the field experiments, and were used to measure the temporal and spatial variability in wave breaking occurrences on both land atop towers and at sea aboard ships. Video data obtained coincident with in situ pressure, bi-directional velocity, turbulence, and void fraction were used to calibrate new models for the transformation of wave energy across the surf zone, the forcing of nearshore circulation patterns, and characteristics of breaking waves including turbulence and bubble injection into the water column. Methods for measuring wave breaking on the continental shelf from shipboard video observations were developed in a series of cruises, and used to quantify whitecapping events in relation to sea and swell in the vicinity of a directional waverider buoy.				
14. SUBJECT TERMS ocean surface waves, shallow water wave transformation, wave breaking, whitecapping, video image processing, nearshore processes.			15. NUMBER OF PAGES 3	
			16. PRICE CODE	
17. SECURITY CLASSIFICATION OF REPORT Unrestricted	18. SECURITY CLASSIFICATION OF THIS PAGE Unrestricted	19. SECURITY CLASSIFICATION OF ABSTRACT Unrestricted	20. LIMITATION OF ABSTRACT None	

Results from ONR Grant N00014-96-1-0041

Amount: \$ 44,499

Duration: 10/1/95 - 9/30/97

19980929 055

### Summary

This grant consisted of two components, development of new instruments followed by three field investigations of the dynamics of the wave surface and bottom boundary layers in shallow nearshore waters. The research grant was initiated at the Naval Postgraduate School with co-principal investigators Dr.'s E. B. Thornton, T. P. Stanton, and T. C. Lippmann. The summary which follows focuses on results contributed by Dr. Lippmann after his subsequent move to Scripps Institution of Oceanography in the second year of the initial three year grant duration.

A primary result of the instrumentation phase was the development of video image processing methods for quantifying the spatial and temporal variation of depth-limited wave breaking in the surf zone and steepness-limited whitecapping in intermediate and deep water. Both daylight and intensified nighttime video camera systems were developed which can be used to measure the location and time of individual wave breaking events that occur over several hundred meters both across-shore and along the coastline. These remotely controlled systems (via fiber-optic linkages) could be deployed under adverse weather conditions and continuously for several months. The time-synchronization of the video frames from multiple cameras can also be used for stereo-graphic analysis of wave breaking data. The statistics of wave breaking distributions obtained from a series of video cameras are used to calibrate new models for the transformation of wave heights across the surf zone, and quantified spatial forcing patterns for nearshore circulation that was not previously well understood. Methods for measuring whitecapping distributions were developed over several iterations and multiple field deployments, and resulted in a field tested method for quantifying the occurrence of whitecapping events in relation to synchronized observations of the sea-swell waves in the vicinity of a wave bouy.

The video systems and several other instruments developed as part of this grant by the co-PI's at the Naval Postgraduate School, were deployed for several weeks on a low-sloping beach in Monterey Bay in the winter and spring of 1995. The data showed that the spatial patterns of wave breaking significantly modified the previously modeled forcing distribution, and subsequently led to improved comparisons between modeled and observed set-up distributions across the surf zone, vertically varying undertow profiles, and bubble injections into the water column. New energy balance models for the spatial variation of wave breaking were verified with arrays of pressure data that measured wave height and nonlinear properties of the wave field (including wave asymmetries and skewness). These systems were deployed again for several months in the Fall of 1997 at Duck, NC, as part of the SandyDuck experiment. These data are being used to quantify the long temporal and large spatial variation of wave breaking patterns, and to compare the wave-driven forcing to collaborative observations of nearshore circulation, low-frequency infragravity motions, and suspended sediment concentration. As part of ongoing research, these results will be placed in context with the variation of bottom roughness and larger scale bathymetric features measured by our co-PI's.

## Publications

### Referred Articles:

Lippmann, T. C., C. F., Jorgensen, and E. B. Thornton, Wave slopes and breaking distributions in the surf zone, *J. Geophys. Res.*, submitted.

Lippmann, T. C., and E. B. Thornton, The spatial distribution of wave breaking on a barred beach, *J. Geophys. Res.*, submitted.

### Theses:

Jorgensen, C. F., Wave slopes and breaking distributions in the surf zone, M.S. Thesis, Naval Postgraduate School, Monterey, CA, pp. 64, 1996.

Tannahill, J. B., Bubble injection under breaking waves, M. S. Thesis, Naval Postgraduate School, Monterey, CA, pp. 56, 1996.

Morris, B. J., Set-up under a natural wave, M. S. Thesis, Naval Postgraduate School, Monterey, CA, pp. 51, 1997.

### Abstracts for Presentations at National and International Meetings:

Jorgensen, C. F., E. B. Thornton, and T. C. Lippmann, Wave asymmetry and breaking distributions on barred profiles, Abstract OS21B-7, *Trans. Amer. Geophys. Union*, 76(46), F293, 1995.

Tannahill, J. F., E. B. Thornton, T. P. Stanton, and T. C. Lippmann, Bubble injection events measured under breaking waves, Abstract OS21A-11, *Trans. Amer. Geophys. Union*, 76(46), F293, 1995.

Morris, B. J., E. B. Thornton, and T. P. Stanton, Wave set-up measured in the field, Abstract OS21A-01, 76(46), F293, 1995.

Thornton, E. B., T. P. Stanton, J. F. Tannahill, and T. C. Lippmann, Anatomy of breaking waves measured in the field, *Coastal Dynamics '97*, Plymouth England, 1997.