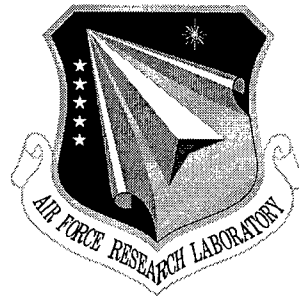


AFRL-IF-RS-TR-1998-132, Vol I (of three)
Final Technical Report
July 1998



CAMPAIGN PLANNING - Knowledge Bases For Air and Maritime Campaign Planning

SRI International

Sponsored by
Defense Advanced Research Projects Agency
DARPA Order No. C671

19981006 082

APPROVED FOR PUBLIC RELEASE; DISTRIBUTION UNLIMITED.

The views and conclusions contained in this document are those of the authors and should not be interpreted as necessarily representing the official policies, either expressed or implied, of the Defense Advanced Research Projects Agency or the U.S. Government.

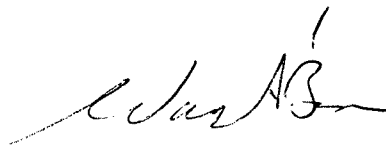
AIR FORCE RESEARCH LABORATORY
INFORMATION DIRECTORATE
ROME RESEARCH SITE
ROME, NEW YORK

DTIC QUALITY INSPECTED 1

This report has been reviewed by the Air Force Research Laboratory, Information Directorate, Public Affairs Office (IFOIPA) and is releasable to the National Technical Information Service (NTIS). At NTIS it will be releasable to the general public, including foreign nations.

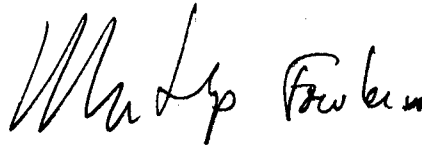
AFRL-IF-RS-TR-1998-132, Vol I (of three) has been reviewed and is approved for publication.

APPROVED:



WAYNE BOSCO
Project Engineer

FOR THE DIRECTOR:



NORTHROP FOWLER, III, Technical Advisor
Information Technology Division
Information Directorate

If your address has changed or if you wish to be removed from the Air Force Research Laboratory Rome Research Site mailing list, or if the addressee is no longer employed by your organization, please notify AFRL/IFTB, 525 Brooks Road, Rome, NY 13441-4505. This will assist us in maintaining a current mailing list.

Do not return copies of this report unless contractual obligations or notices on a specific document require that it be returned.

KNOWLEDGE BASES FOR AIR AND MARITIME CAMPAIGN PLANNING

Thomas J. Lee, Michael J. Wolverton

Contractor: SRI International
Contract Number: F30602-95-C-0175
Effective Date of Contract: June 1995
Contract Expiration Date: September 1997
Program Code Number: 7E20
Short Title of Work: SOCAP-ACPT Technology Integration
Period of Work Covered: Jun 95 - Sep 97

Principal Investigator: Marie Bienkowski
Phone: (650) 859-5485
AFRL Project Engineer: Wayne Bosco
Phone: (315) 330-3578

Approved for public release; distribution unlimited.

This research was supported by the Defense Advanced Research Projects Agency of the Department of Defense and was monitored by Wayne A. Bosco, AFRL/IFTB, 525 Brooks Road, Rome, NY 13441-4505.

| REPORT DOCUMENTATION PAGE | | | Form Approved OMB No. 0704-0188 | |
|--|---|--|--|--|
| Public reporting burden for this collection of information is estimated to average 1 hour per response, including the time for reviewing instructions, searching existing data sources, gathering and maintaining the data needed, and completing and reviewing the collection of information. Send comments regarding this burden estimate or any other aspect of this collection of information, including suggestions for reducing this burden, to Washington Headquarters Services, Directorate for Information Operations and Reports, 1215 Jefferson Davis Highway, Suite 1204, Arlington, VA 22202-4302, and to the Office of Management and Budget, Paperwork Reduction Project (0704-0188), Washington, DC 20503. | | | | |
| 1. AGENCY USE ONLY (Leave blank) | 2. REPORT DATE July 1998 | 3. REPORT TYPE AND DATES COVERED Final Jun 95 - Sep 97 | | |
| 4. TITLE AND SUBTITLE CAMPAIGN PLANNING - Knowledge Bases For Air and Maritime Campaign Planning | | | 5. FUNDING NUMBERS C - F30602-95-C-0175 PE - 62301E, 63278F PR - C671 TA - 00 WU - 01 | |
| 6. AUTHOR(S) Thomas J. Lee, and Michael J. Wolverton | | | | |
| 7. PERFORMING ORGANIZATION NAME(S) AND ADDRESS(ES) SRI International 333 Ravenswood Avenue Menlo Park CA 94025-3493 | | | 8. PERFORMING ORGANIZATION REPORT NUMBER N/A | |
| 9. SPONSORING/MONITORING AGENCY NAME(S) AND ADDRESS(ES) Defense Advanced Research Projects Agency Air Force Research Laboratory/IFTB 3701 North Fairfax Drive 525 Brooks Road Arlington VA 22203-1714 Rome NY 13441-4505 | | | 10. SPONSORING/MONITORING AGENCY REPORT NUMBER AFRL-IF-RS-TR-1998-132, Volume I (of three) | |
| 11. SUPPLEMENTARY NOTES Air Force Research Laboratory Project Engineer: Wayne A. Bosco/IFTB/(315) 330-3578 | | | | |
| 12a. DISTRIBUTION AVAILABILITY STATEMENT Approved for public release; distribution unlimited. | | | 12b. DISTRIBUTION CODE | |
| 13. ABSTRACT (Maximum 200 words) This report describes Version 3 of the Air Campaign Planning Knowledge Base (ACP-KB). Discussed are the generation of Air and Maritime Campaign plans by SIPE-2. SIPE-2 is a domain independent, state-of-the practice artificial intelligence (AI) planning system. ACP-KB components are described in detail in sections three through eight. Also discussed are threat modeling within ACP-KB, object-class hierarchy, goals and operators, deductive rules and predicates. | | | | |
| 14. SUBJECT TERMS SIPE, Maritime Campaign Planning, Air Campaign Planning, Knowledge Bases Campaign Planning (ACP KB), Conventional Target Effective Model (CTEM), Advisable Planner | | | 15. NUMBER OF PAGES 60 | |
| | | | 16. PRICE CODE | |
| 17. SECURITY CLASSIFICATION OF REPORT UNCLASSIFIED | 18. SECURITY CLASSIFICATION OF THIS PAGE UNCLASSIFIED | 19. SECURITY CLASSIFICATION OF ABSTRACT UNCLASSIFIED | 20. LIMITATION OF ABSTRACT UL | |

CONTENTS

| | | |
|----------|---|-----------|
| 1 | INTRODUCTION | 1 |
| 2 | ACP KB OVERVIEW AND SCENARIO | 2 |
| 3 | PROBLEMS AND PLANNED SOLUTIONS | 3 |
| 4 | MODELING AIR CAMPAIGN PLANNING | 4 |
| 4.1 | CAPABILITY-BASED MODELING | 4 |
| 4.2 | NETWORK REPRESENTATION | 4 |
| 4.3 | THREATS | 5 |
| 4.4 | TIME | 5 |
| 5 | CLASSES AND OBJECTS | 6 |
| 5.1 | PLACE CLASS | 6 |
| 5.2 | REGION CLASS | 6 |
| 5.3 | SECTOR CLASS | 7 |
| 5.4 | TARGET CLASS | 7 |
| 5.5 | RATING CLASS | 9 |
| 5.6 | WHEN CLASS | 9 |
| 5.7 | DAYNIGHT CLASS | 10 |
| 5.8 | AIRFRAME CLASS | 10 |
| 5.9 | TARGET-TACTIC CLASS | 13 |
| 5.10 | CAPABILITY CLASS | 13 |
| 5.11 | COMPOSITION CLASS | 14 |
| 5.12 | THREAT CLASS | 14 |
| 5.13 | E-AIRBASE CLASS | 14 |
| 5.14 | AIRBASE CLASS | 14 |
| 5.15 | SEAPORT CLASS | 15 |
| 5.16 | MISSION-CATEGORY CLASS | 15 |
| 6 | OPERATORS, GOALS, AND ADVICE | 15 |
| 6.1 | PRE-CTEM PLANNING | 16 |
| 6.2 | POST-CTEM PLANNING | 21 |
| 7 | DEDUCTIVE RULES | 24 |
| 8 | PREDICATES | 24 |
| 8.1 | TARGET NETWORKS | 25 |
| 8.2 | THREATS | 26 |
| 9 | REFERENCES | 27 |

Appendix

JMCAP NEO DOMAIN

1 INTRODUCTION

SRI International (SRI) is pleased to submit this technical report to the United States Air Force (USAF) Rome Laboratory (RL) and the Defense Advanced Research Projects Agency (DARPA) describing the knowledge bases developed under RL contract F30602-95-C-0175 for a generative planning system, SIPE-2.*

SIPE-2 is a domain independent, state-of-the-practice artificial intelligence (AI) planning system that has been applied in a number of military domains. Under the DARPA/RL Planning Initiative (ARPI) program, it was used as an integral part of the Fourth Integrated Feasibility Demonstration (IFD-4). IFD-4 showed the feasibility of AI planning to support both plan development and minor editing, plan refinement, and feasibility estimation for the USAF domain, air campaign planning. Feasibility estimation is the process of determining if a plan, articulated by a human planner to any level of detail, can be accomplished under practical operating conditions such as available resources (including such items as logistics, personnel, and intelligence assets). Feasibility estimation acts as a reality check for human planners while they are planning either the strategic or tactical parts of a mission. AI planners can aid such checking by filling out the parts of the plan that are incomplete, generating the detailed actions needed to support more abstract actions and goals, and extracting plan elements for analysis by an external module, such as a logistics scheduler. In addition to serving as a prelude to the analysis, the generation of the detailed plan itself serves as a check of the plan's feasibility: if no detailed plan can be generated, then assumptions that could not be satisfied were made in the higher-level planning.

SIPE-2 was critical to the feasibility estimation conducted for IFD-4. In IFD-4, SIPE-2, which was integrated with several other AI or USAF legacy systems, provided a central point for the maintenance of a hybrid plan representation, combining elements from other systems. SIPE-2 created detailed plans from high level, strategic goals; extracted information from the plans for feasibility estimation; and supported a selected set of plan modifications. In a follow-on effort to IFD-4, called the Technology Integration Experiment 97-1 (TIE 97-1), SIPE-2 was used in the same way with a knowledge base that was extended beyond IFD-4 capabilities. The TIE 97-1 knowledge base is described in this document.

SIPE-2 is also being used in the Joint Maritime Crisis Action Planning (JMCAP) system, an ONR/SPAWAR (formerly NRaD)[†]-sponsored effort in which SPAWAR and SRI are developing technology for distributed, collaborative, continuous planning in a maritime scenario. JMCAP supports the semiautomated generation of crisis response options in the presence of multiple, competing objectives and constraints. Within JMCAP, SIPE-2 operates in a distributed computing environment that includes multiple agents collaboratively solving the overall planning problem.

Bienkowski [1997] provides more details on SIPE-2's role in IFD-4. Wilkins [1997] gives details on running SIPE-2. SIPE-2 in TIE 97-1 relied on the Advisable Planner module, which is described by Myers [1996]. A companion user's/design guide [Bienkowski 1998] covers (1) the design and operation of the application of SIPE-2 to air campaign feasibility estimation;

*SIPE-2: System for Integrated Planning and Scheduling. SIPE-2 is a trademark of SRI International. All product or company names mentioned in this document are the trademarks of their respective holders.

[†]ONR: Office of Naval Research; SPAWAR: Space and Naval Warfare Systems Command; NRaD: Naval Research and Development.

(2) extensions made to SIPE-2 for IFD-4 (including integration code); and (3) the SIPE-2 user interface for IFD-4. This report contains details only on the SIPE-2 knowledge base for TIE 97-1 and JMCAP: SRI's companion user's guide [Bienkowski 1998] should be consulted for contextual information on the operation of SIPE-2 in military planning.

This report is organized as follows. Section 2 describes Version 3 of the Air Campaign Planning Knowledge Base (ACP KB). Section 3 describes the plans that are generated by SIPE-2 using the ACP KB. Sections 3–8 describe the components of the ACP KB. Section 4 describes the threat modeling; Section 5, the object-class hierarchy; Section 6, the goals and operators; Section 7, the deductive rules; and Section 8, the predicates. Section 9 lists the references cited in the text. The appendix describes the domain knowledge base for the Noncombatant Evacuation Operation (NEO) developed for use in JMCAP.

2 ACP KB OVERVIEW AND SCENARIO

This section describes Version 3.0 of the ACP KB. This version was used in the demonstration of TIE 97-1 in November 1997. An earlier version was used in ARPI IFD-4 in the summer of 1996. The TIE 97-1 version extends the IFD-4 version primarily in the areas of threat modeling.

The ACP KB encodes knowledge for automatically generating the portion of an air campaign plan whose purpose is to achieve air superiority. SIPE-2 uses the ACP KB to generate a set of primitive actions, executable by a group of aircraft or other air assets, that provide protection to friendly aircraft and centers of gravity (COGs)* from all enemy threats enumerated in the scenario.

The plans are generated in two parts. The first part includes selecting which targets to strike. The second part consists of determining the support required by the aircraft striking these targets, and selecting the primitive actions needed to provide that support. Between these two steps, an external program called CTEM† is run, which takes the targets from the first part, supplements each with additional information and groups the results into packages of targets. CTEM's output is used as input to complete the second part of the plan for SIPE-2. Internally, these two parts are represented as two separate subplans. These subplans are referred to the *pre-CTEM* and *post-CTEM plans*.

The plan generation process takes a scenario as input. The scenario describes in detail the situation to which the generated plan is responding. It includes representations of geography; a target database; target networks (i.e., a model of how targets function together and interact); friendly COGs; and friendly air assets and airbases, as well as an intelligence estimate of the kinds and degrees of the threats posed by the enemy to air superiority.

The ACP KB has been implemented and demonstrated in the Granola scenario, which was used for TIE 97-1. This scenario depicts a conflict between two hypothetical countries, Granola and Corona. Corona, the U.S. ally, is located in Baja California. Granola, the enemy, is located in the states of California, Nevada, and Arizona. The goal of the United States is to contain and defeat

*A center of gravity represents a target or target set whose destruction would have a far-reaching impact (i.e., impact beyond the loss of a capability provided by that target).

†CTEM: Conventional Targeting Effectiveness Model.

a Granolan invasion of Corona, and restore the prewar borders. Granola is a substantial regional military power, with a potent air force and a reasonably effective integrated air defense system (IADS).

The main sources for the knowledge used to construct the ACP KB were interviews conducted with USAF officers familiar with various aspects of air campaign planning. This knowledge was supplemented by written material, including Murray [1995] and Deptula [1996].

3 PROBLEMS AND PLANNED SOLUTIONS

Real-world air campaign plans have a hierarchical structure. The ACP KB represents a subset of that structure, as follows. An *air objective* is a high-level goal attainable through the use of air power. Air objectives are decomposed into *air tasks*. Tasks are decomposed into *activities*: an attack on a particular target is an activity. Activities are decomposed into *support missions*. Each support mission occurs on a particular day and time, and represents one sortie by a group of like aircraft (e.g., F-15Cs).

Each plan generation process uses the knowledge encoded in the scenario. In addition, the pre-CTEM planning process takes as input one air objective. That air objective is to achieve air superiority in the area covered by the scenario. This goal can express the desire to attain either air superiority proper, or air supremacy; the latter implies a greater reduction of and/or stronger defense against all enemy threats.

The pre-CTEM plan (i.e., the solution generated for the air superiority planning problem) contains two kinds of primitive actions—activities for each target selected for attack, and support missions for all activities not involving direct attacks on targets.

The post-CTEM planning process takes as input groupings of these target activities into packages (grouping is done by CTEM). Its output is a set of support missions that will accomplish these attacks.

Example planning problems are contained in the source file released with the SIPE-2 distribution [Wilkins 1997] `problems.sipe`. The first three problems—AS-A, AS-B, and AS-C are identical problems containing the high-level air superiority goal the KB solves. Other problems are used to test portions of the KB.

4 MODELING AIR CAMPAIGN PLANNING

4.1 CAPABILITY-BASED MODELING

This section describes how various elements of a scenario are modeled in order to generate plans that, when executed, select and attack enemy capabilities in support of high-level planning goals. A key feature of the ACP KB is that it enables SIPE-2 to create plans that deal with groups of targets that work together to provide a capability to the enemy. The KB provides primitives for aggregating targets into groups, and associating with that group a capability it provides. For example, all runways at an airbase provide a TAKEOFF-LANDING network that provides a TAKEOFF-LANDING capability at that airbase. Each such group is called a *network*. Furthermore, the same primitives can be used to group networks into higher-level networks that provide higher-level capabilities. For example, the TAKEOFF-LANDING, MUNITIONS, MAINTENANCE, and AIRCRAFT capabilities of an airbase work in concert to provide the capability to conduct AIR-OPERATIONS from that airbase.

Associated with each network is an effectiveness level between 0 (inoperative) and 1 (fully capable). As network components are damaged or otherwise degraded, the effectiveness levels in the modeled networks are reduced by an amount that is a function of the criticality of the degraded component. The ACP KB contains rules for computing effectivenesses, which are reusable from scenario to scenario. Effectiveness levels are represented by SIPE-2 LEVEL predicates [Wilkins 1997].

4.2 NETWORK REPRESENTATION

Each network is uniquely identified by a *capability* and a *place*. The place can be a target, a small area, a large region, etc., as desired for modeling the range or extent of the capability.

Each network is also characterized by a *composition*. The composition determines the effectiveness of the parent network as a function of the effectivenesses of its children. There are three different compositions:

- Additive: all components contribute in proportion to their weight
- Critical: parent effectiveness is the minimum of all components
- Redundant: parent effectiveness is the maximum of all components.

These characteristics are represented using a NET predicate for the network.

A parent network has one or more components. A component may be either a target or another network, and may be a part of many networks. Like a network, a component is uniquely identified by a capability and a place. If the component is a target, then the target itself is the place. A component also has a weight associated with it, which is used in determining the impact of degradation in the component's effectiveness on that of the parent. Each component is represented by a PROVIDES predicate.

Some networks have capabilities that are in part intrinsic: that is, even if all of its components were rendered completely ineffective, the network could still continue to function at some threshold level of effectiveness, below which it cannot be reduced. This threshold is represented by a NEEDS predicate.

Capability-based network modeling has been used, in the ACP KB, to represent IADS networks. It could also be used to represent other target networks of interest in air campaign planning, for example production networks including mining, manufacturing, and distribution components.

4.3 THREATS

The ACP KB models threats posed by surface-to-air missiles (SAMs), as well as various threats from enemy aircraft, including strike threats to ground- and sea-based friendly forces and territory, threats to friendly aircraft flying over friendly territory, and threats to friendly aircraft flying over enemy territory. The model allows for threats from anti-aircraft artillery (AAA) and theater-ballistic missiles (TBMs), as these are part of the air superiority picture. (However, the current implementation of the KB ignores these threats.)

The following information is associated with each threat:

- The kind of threat
- The associated network (capability and place)
- Whether the threat is daytime-only or 24-hour
- The base level of the threat; the base level reflects an intelligence analysis of the lethality of the threat against the most likely platforms or blue COGs it could be employed against.

The current level of a threat is its base (initial) level times the current effectiveness of the associated network, reflecting any damage or other degradation due to attacks upon it. As with network effectivenesses, the current level of a threat is represented by a LEVEL predicate (although threat levels are not constrained to be in the range between 0 and 1).

Threats are represented by THREAT predicates. For example:

- (threat strike-threat air-operations Van-Nuys daytime 160)
- Says the ground strike threat emanating from Van Nuys airbase as a daytime-only threat and has a base level of 160.

4.4 TIME

The time granularity of the ACP KB is 24 hours. All actions are considered to take at least one full day to accomplish, for historical reasons. First, the original purpose of the ACP KB was to estimate resource requirements (i.e., the numbers of aircraft sorties) required by a plan. One-day granularity is appropriate for this estimate, but is problematic for other uses of the ACP KB. For instance, it would be useful to sequence certain actions within a 24-hour period, perhaps designating some to occur at night. The ACP KB cannot do so.

5 CLASSES AND OBJECTS

SIPE-2 includes primitives for expressing class-object hierarchies to define domain elements and groups thereof. SIPE-2 documentation refers to this as the *sort-hierarchy* [Wilkins 1997]. Each definition includes the class/object name, its parent class, and a property list.

The objects in the sort hierarchy define the symbolic arguments allowable in predicates. The classes and properties of an object can be referenced in constraints in SIPE-2 operators; this is a convenient way to express planning semantics.

Following is a description of the key classes used in the ACP KB, along with some illustrative objects. SIPE-2 allows two syntaxes for expressing hierarchies: a flat syntax, in which direct parent classes and child classes/objects are listed, and a nested syntax, which allows the specification of multiple levels of children in one syntactic structure. Both are used below.

Most of the classes listed below are in the source file `hierarchy.lisp`. Many of the geographical classes are in `geography.lisp`. An associated `.sipe` file is automatically generated for each of these files when the KB is modified. A few high-level classes are defined in `root-hierarchy.sipe`. The target database is contained in `target-objects.sipe`. This file is generated programmatically from a flat file representation of the target database.

5.1 PLACE CLASS

The place class is the root for all geographic classes. It is used extensively in operators to indicate a variable that may be bound to any place in the scenario.

```
CLASS: place
SUBCLASSES: region,sector,target,seaport,airbase,e-airbase;
END CLASS
```

5.2 REGION CLASS

A region is a large-scale area that may be subdivided into sectors.

```
(class region
  (object aor)
  (class land-region
    ;; Scenario-specific land-region objects are defined here
    (object corona (side BLUE))
    (object granola (side RED))
    ;; These are used only to aggregate various threats into one capability
    (object northern-granola (side RED))
    (object southern-granola (side RED))
  )
  (class sea-region
    ;; Scenario-specific sea-region objects are defined here
    (object pacific-ocean (side GRAY))
    (object gulf-of-california (side GRAY))
  )
)
```

5.3 SECTOR CLASS

A sector is an area smaller than a region.

```
(class sector
  (class land-sector
    ;; Scenario-specific sea-sectors are defined here
  )
)

(class sea-sector (side GRAY)
  ;; Scenario-specific sea-sectors are defined here
)
)
```

5.4 TARGET CLASS

The target class groups targets into types and subtypes according to a classification system used by the U.S. Air Force. Each type of target has a *catcode* associated with it. Each target in the target database has one of these as a parent class.

```
(class target
  (catcode 99999)
  (object NONTARGET)
  (class movable )
)

(class ab-targets (catcode 71000)
  (class ab-shelter (catcode 71100)
    (class ab-ac-in-open (catcode 71200))
    (class ab-fuel-storage (catcode 71300))
    (class ab-munition-storage (catcode 71400))
    (class ab-maintenance (catcode 71500))
    (class ab-runways (catcode 71600))
    (class ab-housing (catcode 71700)))
)

(class c3-targets (catcode 72000)
  (class c3-hq (catcode 72100))
  (class c3-leadership (catcode 72300))
  (class c3-center (catcode 72400))
  (class c3-air-defense (catcode 72500))
  (class c3-cb (catcode 72600))
  (class c3-military (catcode 72700))
  (class c3-telephone (catcode 72800))
  (class c3-satellite (catcode 72900)))
)

(class power-facilities (catcode 73000)
  (class pf-nuclear (catcode 73100))
  (class pf-electrical (catcode 73200))
  (class pf-transformer (catcode 73300))
  (class pf-relay (catcode 73400))
  (class pf-refinery (catcode 73500))
  (class pf-petroleum-storage (catcode 73600))
  (class pf-pipeline (catcode 73700)))
)

(class storage (catcode 74000)
```

```

(class sf-sam-ammo (catcode 74100))
(class sf-other-ammo (catcode 74200))
(class sf-supply (catcode 74300))
(class sf-vehicle (catcode 74400))
(class sf-food-ammo (catcode 74500)))
(class seaport (catcode 75000)
(class sp-dock (catcode 75100))
(class sp-storage (catcode 75200))
(class sp-surface-berth (catcode 75300))
(class sp-sub-berth (catcode 75400))
(class sp-offload (catcode 75500)))
(class iads-targets (catcode 76000)
(class ia-ewgci (catcode 76100))
(class ia-sam)
(class ia-ssam (catcode 76200))
(class ia-tsam (catcode 76300))))
(class transportation-infrastructure (catcode (77000))
(class ti-bridge (catcode 77100))
(class ti-constriction (catcode 77200))
(class ti-cargo (catcode 77300))
(class ti-sewage (catcode 77400))
(class ti-water (catcode 77500)))
(class marshalling-area (catcode 79000)
(class ma-barracks (catcode 79100))
(class ma-open (catcode 79200))
(class ma-armor (catcode 79300))
(class ma-artillery (catcode 79400))
(class ma-vehicles (catcode 79500))
(class ma-engineering (catcode 79600)))
(class wmd (catcode 80000)
(class wmd-production (catcode 80100))
(class wmd-storage (catcode 80200))
(class wmd-research (catcode 80300)))
(class terrorist-camp (catcode 81000))
(class ballistic-missile (catcode 82000)
(class bm-storage (catcode 82100))
(class bm-production (catcode 82200))
(class bm-launcher (catcode 82300)))
(class ground-vehicle (catcode 83000)
(class gv-vehicle (catcode 83100))
(class gv-artillery (catcode 83200))
(class gv-howitzer (catcode 83300))
(class gv-mrl (catcode 83400)))
)

```

The target database consists of a set of objects of class target. Each target is uniquely identified by a number called a Basic Encyclopedia (BE) number. Target objects are created programmatically from a flat file representation of the target database. Following is an example target object.

```

OBJECT: Fallon-9006AB0003-71300
PARENT-CLASS: AB-FUEL-STORAGE
PROPERTIES:
  CATCODE = 71300,
  BEN = 9006AB0003,
  SECTOR = RENO-SECTOR,
  LAT = 3930,
  LON = 11845,
  LATBOX = 3900,
  LONBOX = 11800;
END OBJECT

```

5.5 RATING CLASS

The rating class is used as a general-purpose rating convention in numerous predicates.

```

(class rating
  (object very-high (ordinal 5))
  (object high (ordinal 4))
  (object med (ordinal 3)) ;;medium is a Sipe variable name
  (object low (ordinal 2))
  (object very-low (ordinal 1))
  (object none (ordinal 0)))

```

5.6 WHEN CLASS

The when class is used to specify when an action or support mission occurs.

```

(class when
  (object DAILY) ;for actions which are done every day
  (class dday ;time relative to start of a plan
    (object D+0 (ordinal 0))
    (object D+1 (ordinal 1))
    (object D+2 (ordinal 2))
    (object D+3 (ordinal 3))
    (object D+4 (ordinal 4))
    (object D+5 (ordinal 5))
    (object D+6 (ordinal 6))
    (object D+7 (ordinal 7))
    (object D+8 (ordinal 8))
    (object D+9 (ordinal 9))
    (object D+10 (ordinal 10))
    (object D+11 (ordinal 11))
    (object D+12 (ordinal 12))
    (object D+13 (ordinal 13))
  ))

```

5.7 DAYNIGHT CLASS

The daynight class is used to characterize when certain threats are extant, and when certain support missions take place.

```
(class daynight
  (object 24-hour (duration 24));ie. day and night
  (object daytime (duration 12));!assume this for simplicity
  (object nighttime (duration 12)))
```

5.8 AIRFRAME CLASS

The airframe class describes the types of friendly aircraft used in planning support missions (the capabilities of enemy aircraft are modeled more abstractly by THREAT predicates). Subclasses and properties are used to determine the suitability of aircraft for various support missions.

```
(class airframe
  (air-self-protect 0)      ;how well they handle enemy fighters
  (burn-rate 10000)       ;!just a guess
  (cas 0)                  ;appropriateness for CAS role
  (harm 0)                 ;#of AGM-88 (HARM) missiles
  (intercept 0)           ;appropriateness for air sup. role
  ;;Jamming is expressed in angular coverage of a pair of aircraft
  (jam-comm 0)            ;communications jamming
  (jam-radar 0)           ;radar jamming
  (max-offload 0)         ;tanker's fuel
  (max-sortie-duration 8) ;max hrs aloft, on avg.
  (radius 500)            ;combat radius for typical profile
  (service USAF)          ;default is Air Force
  (speed 250)             ;nominal/cruising speed
  (stealth 0)             ;stealth/nonstealth flag
  (class no_airframe      ;just so NO-AIRFRAME inherits props.
  (object NO-AIRFRAME));for self-delivered munitions
  (class unmanned
    (burn-rate 0)         ;unmanned airframes don't refuel
    (object tomahawk      ;cruise missile - an airframe to CTEM
      (radius 1500)))    ;!just a guess
  (class manned
  (class fighter          ;ie. high performance ftrs
    (cas 5)               ;just a guess
    (burn-rate 8000);fuel/hour used, on avg. (2 engines)
    (object f-117a (stealth 1)
      (radius 600)
      (speed 420))
    (class interceptor    ;can't drop bombs
      (air-self-protect 9)
      (cas 0)
      (intercept 9)
      (object f-14d (service USN)
        (radius 600)
        (speed 480))
```

```

        (object f-15c
            (radius 860) ;profile-dependent
            (speed 500))
        )
(object f-15e
    (radius 1000)
    (speed 540)
    (air-self-protect 7)
    (intercept 5)) ;Usable for intercept missions
(object f-16c;F-16s vary greatly in capabilities
    (radius 500)
    (speed 420)
    (air-self-protect 5)
    (intercept 7) ;Used in air sup. role sometimes
    (burn-rate 4000) ;F-16 is single-engine
    (harm 2));can carry HARM munition
(object fa-18 (service USN)
    (radius 550)
    (speed 420)
    (air-self-protect 7)
    (harm 2) ;From Murray p92; can maybe carry more!!
    (intercept 7)) ;Equiv. to F-15E in capability
)
(class bomber
    (object b-52
        (burn-rate 20000)
        (radius 7650)
        (speed 360)
        (cas 6))
    (object b-1b
        (burn-rate 14000)
        (radius 3500)
        (speed 540))
    (object b-2 (stealth 1)
        (burn-rate 14000)
        (radius 2600)
        (speed 420))
)
(class sead;other AC have SEAD capab.
    (object ea-6b (service USN)
        (harm 4);!4 or 2??
        (jam-comm 180)
        (jam-radar 180)
        (radius 695)
        (speed 420))
    (object ec-130
        (jam-comm 180)
        (radius 1300) ;!??
        (speed 240))
    (object ef-111
        (jam-comm 180)
        (jam-radar 180))
)

```

```

        (radius 3100)
        (speed 540))
    (object f-4g
      (harm 4);!do some only carry 2?
      (radius 680)
      (speed 480))
  )
(class tanker
  ;;max-offload takes into account reserves, takeoff cost, etc.
  (booms 1)      ;!some kc-10s can have 2
  (object kc-135;assume the KC135R model
    (burn-rate 10000)
    (radius 5000) ;!just a guess
    (speed 440)
    (max-offload 145000))
  (object kc-10
    (burn-rate 20000)
    (radius 5000) ;!just a guess
    (speed 520)
    (max-offload 272000))
  )
(class reconaissance
  (optical 1)      ;assume all recon aircraft have cameras
  (radar 1)        ;!added for MPA 9/96 demo
  (object rf-4);!may not be in IFD-4 scenario
  (object u-2))
(class awacs
  (object e-3
    (max-sortie-duration 8))
  (object e-2 (service USN)
    (max-sortie-duration 6))
  )
(class ground-attack;close-air support
  ;; Any strike AC can do CAS; these are specialized for CAS
  (cas 9)          ;prefer these aircraft for CAS roles
  (object a-10a
    (radius 250)
    (speed 260))
  (object ac-130
    (radius 1300)
    (speed 240))
  (object av-8b (service USMC)
    (radius 595)
    (speed 260)
    (air-self-protect 2));Just a guess
  )
  (object jstars);supports CAS - can see vehicles
  (object abccc);supports CAS -C^2
))

```

5.9 TARGET-TACTIC CLASS

The target-tactic class enumerates the variety of ways in which a target can be attacked, besides delivering munitions to it. Limited use of it is made in the ACP KB; it is intended as a hook for future expansion.

```
(class target-tactic
  ;;Various ways besides STRIKES that a target may be attacked.
  ;;Used in VULNERABLE-TO predicates
  (object sof-attack) ;Special operations
  (object jam-attack) ;Of comm, radar. !Not used in TIE97
  (object helo-attack) ;Attack helicopters. !Not used in TIE97
)
```

5.10 CAPABILITY CLASS

The capability class enumerates the various enemy capabilities that are modeled.

```
(class capability ;ie. of a target network
  (object test-capab) ;for testing only
  (object c3)
  (object higher-command) ;higher HQ/cmd
  (object aaa-engagement) ;ability to fire antiaircraft artillery
  (object sam-engagement) ;ability to launch and guide SAMs
  (object air-operations) ;airbase's ability to conduct air operations
  (object air-picture) ;radars etc. that allow reacting to attacks
  (object air-intercept) ;engaging attacking blue aircraft with ftrs
  (object sector-intercept) ;defense of a sector with fighters
  (object air-attack) ;attacking in-air blue aircraft with ftrs
  (object air-strike) ;attacking blue territory or ships with aircraft
  (class target-capability
    ;;These are capabilities that, when paired with a TARGET in a
    ;;network definition, can be degraded by attacking that target.
    (object c3-air)
    (object early-warning) ;ie. of hostile aircraft
    (object ground-control) ie. of friendly aircraft
  )
  (class airbase-capability
    (object takeoff-landing ;ie. runways and taxiways
    (object aircrew)
    (object aircraft) ;aircraft used to shoot down blue aircraft
    (object fuel)
    (object munitions)
    (object maintenance))
    (object sam-launcher) ;launchers+missiles at SAM site
    (object sam-support) ;nonweapon req'ts for SAM to function well
    (object electricity)
    (object communications)
  ))
))
```

5.11 COMPOSITION CLASS

The composition class enumerates the three ways in which the effectiveness of a parent network depends on the effectivenesses of its components.

```
(class composition
  (object additive) ;Degradation is proportional to that of components
  (object critical) ;Degrading any one component degrades the entire net
  (object redundant);All components must be degraded
)
```

5.12 THREAT CLASS

The threat class enumerates the various threats that are modeled. It is used primarily in THREAT predicates to quantify threats and associate each with a target network.

```
(class threat
  (object aaa-threat) ;to blue aircraft over red airspace
  (class threat-aircraft
    (object oca-threat) ;to blue aircraft over blue territory
    (object intercept-threat);to blue aircraft over red airspace
    (object strike-threat) ;to blue ground-based forces
    (object sea-strike-threat) ;to blue sea-based forces
  )
(class threat-missile
  (object sam-threat) ;to blue aircraft
  (object tbm-threat) ;to blue ground-based forces
))
```

5.13 E-AIRBASE CLASS

The e-airbase class is used to enumerate enemy airbases. These are used in THREAT predicates, and in predicates defining target networks.

```
(class e-airbase
  (object LAX
    (intercept 1) (attack 0) ;These are unused
    (lat 3357) (lon 11825)
    (latbox 3300) (lonbox 11800))
  ;; Other domain-dependent bases are defined here
)
```

5.14 AIRBASE CLASS

The airbase class is used to enumerate friendly airbases.

```
;;; ALL BLUE BASE NAMES MUST BE <= 8 CHARACTERS due to CTEM limitations
;;;! Note all airbases also have a LOCATED-WITHIN predicate
(class airbase ;ie. friendly
  (lat 9000) (lon 0) ;Make sure every base has a lat/lon
```

```

(object NO-AIRBASE)           ;for assets not at any base (sensors?)
(class carrier ;Assume fixed loc. for duration of plan
  (object lincln (lat 3130) (lon 11845))
  (object trvelt (lat 3132) (lon 11844)))
(class air-field ;An airbase on land
  (object sanfilipe (lat 3115) (lon 11501))
  (object loreto (lat 2601) (lon 11122))
  (object cabosanl (lat 2301) (lon 10954))
  (object lapaz (lat 2411) (lon 11016))
  (object hickam (lat 2115) (lon 15756))) ;Hawaii
)

```

5.15 SEAPORT CLASS

The seaport class can be mentioned in COG predicates to identify a friendly center of gravity.

```

(class seaport ;;These are COGs that must be protected
  (lat 9000) (lon 0)           ;Make sure every base has a lat/lon
  (object santa-rosalia (lat 2723) (lon 11219))
)

```

5.16 MISSION-CATEGORY CLASS

The mission-category class is used in post-CTEM planning to categorize support mission resource requirements.

```

(class mission-category
  ;;All missions (primitive actions) in plan fall into one of these groups
  (object strike)
  (object counterair);! was called ESCORT for IFD4
  (object isr)
  (object ew)
  (object refuel) ;! was called FUEL for IFD4
)

```

6 OPERATORS, GOALS, AND ADVICE

The ACP KB solves two separate planning problems—the pre-CTEM plan and the post-CTEM plan. Disjoint sets of operators are used for each plan. Each set is discussed separately.

The ACP KB includes a set of operators for refining goals into actions and subgoals. Operators fall naturally into groups based on the types of goals that each refines. These groups are termed *abstraction levels*. Operators within an abstraction level typically refine the same goal or related goals. The following discussion of operators is organized by abstraction levels.

6.1 PRE-CTEM PLANNING

The pre-CTEM portion of the KB contains the following abstraction levels:

- High-level decisions
- Defensive/offensive substrategies
- Effectiveness reduction (of networks)
- Target selection
- Attack selection
- Effectiveness computation.

The source file `airsup-ops.sipe` contains the operators for the first two abstraction levels. The remainder are contained in `ops.sipe`, except that effectiveness computation is done in `ops.sipe` and `side-eff-ops.sipe`, and also by deductive rules (in `deduce.sipe`).

6.1.1 HIGH-LEVEL DECISIONS

The highest-level goal in pre-CTEM planning is simply to achieve air superiority in the area of interest in the scenario. The ACP KB first partitions the air superiority problem into its offensive and defensive components. The offensive and defensive air superiority subgoals are solved separately, though there can be interactions between them (e.g., neutralizing airbases can serve both goals).

The ACP KB contains two options for the degree of air superiority desired: Air Superiority and Air Supremacy. Air Supremacy forces threats and air defenses to be reduced to lower levels than Air Superiority; otherwise, these subgoals are handled identically.

The operators implementing these alternatives are `achieve-offensive-air-superiority`, `achieve-offensive-air-supremacy`, `achieve-defensive-air-superiority`, and `achieve-defensive-air-supremacy`. The defensive and offensive alternatives are described in the following two subsections (Subsections 6.1.2 and 6.1.3).

6.1.2 DEFENSIVE AIR SUPERIORITY SUBSTRATEGIES

SIPE-2 plans for defensive air superiority by responding to all threats to all friendly COGs that are present in the scenario. A `THREAT-AXIS` predicate is used to associate threats with the places each threatens, and where the threat would cross the border:

```
(THREAT-AXIS <threat> <place> <threatened-place> <border-sector>).
```

Each `threatened-place` that is, or contains, a friendly COG causes the ACP KB to plan some response to the threat. The response could be preemptive (i.e., the threat is attacked somehow) or defensive in nature. If the threat is deemed insignificant, the ACP KB notes this with an `IGNORE-THREAT` action.

The following sequence of decisions is made by SIPE-2 in planning defensive air superiority:

1. Either a `PROTECT` or `PROTECT+ROLLBACK` overall strategy is adopted. Both will protect all threatened COGs somehow; in addition the latter will preempt threats that are close to friendly territory. Only one rollback strategy is implemented completely

in the ACP KB—that of preempting all threats originating in sectors bordering friendly territory. Other strategies, perhaps based on strength or type of threat or proximity to COGs, could be implemented by writing additional operators.

2. All significant threats to all blue COGs are identified. This is a deterministic step in which all threat-COG combinations are found, and protection goals are posted for each.
3. A protection alternative is chosen from the following:
 - A. Combat air patrol (CAP) at the threatened place
 - B. CAP in the sector at which the threat axis intersects the border
 - C. CAP over the origin of the threat
 - D. Preempt the threat (i.e., reduction of the threat to an “acceptable” level).
4. Support missions are generated.

6.1.3 OFFENSIVE AIR SUPERIORITY SUBSTRATEGIES

Planning for offensive air superiority uses a “breach and extend” strategy. A breach is a point at which the IADS is initially degraded enough to permit ingress by nonstealth aircraft. Once a breach is achieved, air superiority is extended over areas that are to be attacked as part of the overall air campaign. Both the breach location(s) and the areas to which air superiority is to be extended are expressed in sectors.

Air superiority in a sector is attained by reducing the SAM-THREAT and INTERCEPT-THREAT in that sector to acceptable levels. SAM-THREATs typically include all SAMs in that sector, even if some SAMs cover only a small part of the sector. INTERCEPT-THREATs typically include all fighters whose range permits operation over the sector.

The ACP KB implements the following breach alternatives:

- One sector
- Two sectors (possibly widely separated or on different borders)
- All sectors along an entire hostile border.

Currently, the sectors to which air superiority is to be extended are explicitly specified as part of the scenario. These sectors are those in which air strikes are called for in the overall plan. These sectors are designated by a REDUCE-IADS-THREAT predicate.

In principle, these sectors could be inferred from the rest of the air campaign plan by simply noting the sectors in which attacks are to be conducted. Because, however, the KB considers only the air superiority portion of the plan, we decided to leave the implementation of such an inference technique for future work.

6.1.4 EFFECTIVENESS REDUCTION

The third abstraction level in the ACP KB reduces the effectiveness of target networks. This abstraction level contains three sublevels—threat reduction, network reduction, and network degradation.

6.1.4.1 Threat Reduction

The higher abstraction levels of the ACP KB select threats whose levels are to be reduced. This selection is done during defensive air superiority planning by preempting threats such as STRIKE-THREATS, and during offensive air superiority by reducing INTERCEPT-THREATS and SAM-THREATS over enemy territory. Since each threat is associated with one network, this process leads to a deterministic selection of networks whose effectivenesses are to be reduced.

6.1.4.2 Network Reduction

The operators at the network reduction level provide a general-purpose capability to reduce the effectiveness of a given network so that it falls below a given threshold level. In this version of the ACP KB, only networks associated with threats are reduced. However, the operators are suitable for reducing any kind of network.

Each operator has as its purpose a LEVEL<= predicate. Expansions of the operator generate actions that reduce the effectiveness of the network below the threshold level. The reduction is accomplished by posting a network degradation goal for one or more of the components of the network being reduced. When the network degradation goal is fully expanded, the LEVEL<= predicate is checked, and is solved again recursively if the effectiveness is not below the desired threshold.

The ACP KB implements three network reduction alternatives: reduce-network-serial, reduce-network-parallel, and reduce-network-completely. The first selects only one component to be degraded. In the second, all components are degraded to some extent. In the third, all components are attacked, as are all components of components, until all targets supporting the network are attacked.

6.1.4.3 Network Degradation

The operators at the network degradation level have as their purpose a DEGRADE-CAPABILITY (or a DEVASTATE-CAPABILITY) predicate, which specifies a network whose effectiveness is to be reduced by an arbitrary amount. This differs from the purpose of the network reduction operators, which specify an explicit level to which the effectiveness is to be reduced.

Degradation is accomplished by expanding the operator into one or more degradation goals for components of the network being degraded. These are expanded recursively until components that are targets (as opposed to networks of targets) are reached. At that point the recursion terminates, and a technique for attacking the target is selected. Devastation (as opposed to degradation) means that all components of a network are attacked recursively, effectively attacking all targets supporting a network.

The ACP KB implements numerous network degradation alternatives:

- The degrade-best-network-component selects the one component with the highest contributing weight for degradation.
- The degrade-one-network-component selects one arbitrary component for degradation.
- The degrade-all-network-component selects all components for degradation.
- degrade-network-completely component devastates all components.

The above operators apply to any kind of network. In addition to these, the ACP KB can encode special-purpose degradation strategies for specific kinds of networks. An example is the blind-air-picture operator, which degrades the GROUND-CONTROL and EARLY-WARNING components of a network that provide an AIR-PICTURE of a sector.

6.1.5 Target/Attack Selection

The target/attack selection abstraction level contains two sublevels—target selection and attack selection.

Target selection terminates the recursion started by the network degradation operators. Attack selection terminates pre-CTEM planning by generating primitive actions to attack selected targets.

6.1.5.1 Target Selection

The target selection sublevel consists of an auxiliary set of operators that serve to terminate the recursion started during network degradation or devastation abstraction levels. These operators are degrade-target-component and devastate-target-component. They trigger the computation of the change in effectiveness of the networks containing the target by posting an UPDATE-PARENT effect. They also post a TARGET goal to be expanded by the attack selection operators.

6.1.5.2 Attack Selection

The attack selection operators have as their purpose a TARGET goal, and expand into a primitive action that is a kind of attack on the given target. Two alternatives are implemented—make-strike-target and make-sof-target. The former is an attack by delivery of munitions. The latter is an attack by special forces, the details of which are unspecified. Targets must be identified individually as being vulnerable to a nonmunition attack via a VULNERABLE-TO predicate. Other attacks, such as jamming, are not implemented, but are natural extensions to the ACP KB's capabilities.

6.1.6 Effectiveness Computation

The effectiveness computation operators are used not to reflect planning decisions, but rather to compute the changes of effectiveness in networks, given changes to their components. The general technique used is to defer the computation of the effectiveness of a parent network during recursive degradation and reduction until its children's effectivenesses are computed.

This is done by posting a RESOLVE-NETWORK-DEGRADE (or -REDUCE) goal serially after a DEGRADE-CAPABILITY goal. The RESOLVE goal is copied down each planning level by the appropriate DEFER operator, until a change occurs in the network being degraded. When such a change occurs, the appropriate RESOLVE operator computes the new effectiveness of the network, and posts a change to it. This process proceeds recursively until all attacks on networks are resolved.

A change in a component is detected by the presence of one of the following predicates: MAXLEVEL (for REDUNDANT networks), MINLEVEL (for CRITICAL networks), or CONSUME (for ADDITIVE networks). These predicates are posted as effects by the deductive rules that participate in the computation of effectivenesses.

The operators for resolving degrades are defer-redundant-degrade, resolve-redundant-degrade, defer-critical-degrade, resolve-critical-degrade, defer-additive-degrade, and reserve-additive-degrade.

The operators for resolving reductions are resolve-critical-reduce, defer-critical-reduce, defer-redundant-reduce, resolve-redundant-reduce, and resolve-additive-reduce.

The ACP KB propagates changes in effects upwards to all parent networks of an attacked component. It does so even if the parent itself did not occur in a goal to degrade or reduce the component; such changes are termed *side effects* or *collateral effects*.

The ACP KB permits the specification of advice, which disables the computation of collateral effects. This can improve performance and result in the generation of smaller plans containing fewer levels.

The operators that propagate effectiveness changes upwards are resolve-attack-side-effects, resolve-root-attack, ignore-parent-child-side-effects, resolve-parent-child-main-effect, resolve-parent-child-side-effects, resolve-additive-effect, resolve-critical-effect, and resolve-redundant-effect.

6.1.7 Advice

The ACP KB incorporates advice as specified in Myers [1997]. It uses *features* both to characterize distinctions between alternative operators, and to specify a context in which pieces of advice are active. It uses *roles* to specify planning arguments whose values are constrained by advice.

The ACP KB implements the following features:

- DEFENSIVE DEFENSIVE-AIR-SUPERIORITY DEGRADATION ECONOMICAL
- ESTABLISH-INGRESS IADS-REDUCTION INFLICT-BLINDNESS
- INTERCEPT-REDUCTION MASS OFFENSIVE OFFENSIVE-AIR-SUPERIORITY
- REFUELING SAFE SAM-REDUCTION THREAT-DEFENSE THREAT-REDUCTION.

The ACP KB implements the following roles:

- COG-CAPABILITY COG-PLACE THREAT-TYPE
- PARENT-CAPABILITY GRANDPARENT-CAPABILITY INGRESS-PLACE.

Using these features and roles, the ACP KB implements numerous pieces of advice. Each piece of advice has a one-sentence description associated with it, to identify it in the user interface for advice selection. Following are the descriptions for all implemented pieces of advice:

- Do not compute side effects of attacks on target networks
- Choose YUMA-SECTOR as a point at which to breach the IADS
- Choose SAN-FRANCISCO-SECTOR as a second point at which to breach the IADS
- Neutralize enemy intercept capability by denying them their air picture
- Blind enemy radars in order to deny them their air picture
- Disable SAMs by attacking launchers directly
- When attacking SAM launchers, attack ALL launchers

- Use F-14s to man all point-defense CAPs over carriers
- Use F-15Cs to man all point-defense CAPs over airfields
- Preempt all threats to naval surface ships
- Preempt air operations by attacking airbase munitions
- Choose runways/taxiways as targets when preempting strike threats
- When attacking airbases, mass forces against one target type
- Use non-preemptive operations when achieving defensive air superiority
- Breach IADS at two different sectors
- When defending against threats, use BARCAPs.

6.2 POST-CTEM PLANNING

Post-CTEM planning takes as input a set of SUPPORT-PKG goals. Each such goal designates the type and number of strike aircraft participating in an attack on a set of targets. The ACP KB expands each of these goals into primitive actions for the strike mission itself, and for any support missions required by the strikers. These missions include escort/counterair (protection from enemy aircraft); suppression of enemy air defense (SEAD), i.e., protection from enemy SAMs; refueling; and reconnaissance (both prestrike and poststrike).

To do a high-fidelity estimate of required support, the flight profile (the exact route from base to refueling to target, the altitude, etc.) needs to be considered. The ACP KB does not generate or represent the flight profile of strikes; it assumes a typical altitude profile and straight-line paths between bases, refueling points, and targets. Furthermore, it assumes that all targets in a package are colocated; in reality, targets within a package can be separated by as much as 100–200 miles. Also, in determining requirements for protective support, some important factors like the criticality of the target being attacked and the value of the strike aircraft are not considered.

The operators for post-CTEM planning are in the source file `strike-ops.sipe`. The abstraction levels used in post-CTEM planning are as follows:

- Decompose by striker type
- Select SEAD protection
- Select air protection
- Add reconnaissance
- Add tankers and output support missions.

Each of these levels is described in detail in the remainder of this section.

There is a correspondence between the abstraction levels and the kinds of support missions that are planned with the ACP KB: SEAD, air protection, and reconnaissance missions are added in successive abstraction levels. In addition, the last level adds tanker missions to fulfill package refueling requirements.

6.2.1 Decompose by Striker Type

Each SUPPORT-PKG goal is classified as one of three types, based on the kind of striker: unmanned, stealth, or regular. Each has different support requirements. An unmanned (e.g., cruise missile) strike requires only reconnaissance support. Stealth aircraft, by their nature, are safer when flying alone; they require only reconnaissance and possibly refueling support. Regular (nonstealth) packages may require SEAD and air protection, in addition to reconnaissance and refueling.

The operators are support-nonstealth-pkg, support-cruise-missile-strike, and support-stealth-strike.

6.2.2 Select SEAD Protection

These operators add SEAD protection as needed, based on the SAM-THREAT in the sector that is being attacked. SEAD support consists of aircraft that are capable of firing high-speed antiradiation missiles (HARMs) at SAM radar sites. This type of SEAD is termed *lethal SEAD*. Lethal SEAD is usually supplemented with a capability to jam SAM radars; this is termed *nonlethal SEAD*. Hooks are present in the ACP KB to allocate nonlethal SEAD; however, this kind of support is unimplemented.

Two options are implemented: dedicated SEAD support (the operator add-dedicated-sead), and self-protection (the skip-sead-no-threat). The former is used in the case of a high-threat environment, the later in a low-threat environment. A third option of interest, protection via a SEAD CAP, is not implemented. It is a middle course between self-protection and dedicated SEAD support, allowing SEAD support to be shared among packages flying in a certain area.

6.2.3 Select Air Protection

These operators add protection from attack by enemy aircraft. Support consists of aircraft with the capability of shooting down enemy interceptors.

Four options are implemented: no protection, self-protection, fighter sweep, and dedicated escort. No protection is applicable in an environment where the enemy INTERCEPT-THREAT is negligible. Self-protection is applicable in a low-threat environment in which the strike aircraft are at least somewhat capable in air-to-air combat. Fighter sweep is applicable in medium-threat environments and lower. Dedicated escort is applicable in all situations.

The number of aircraft used in a fighter sweep or dedicated escort is a function of the level of the threat and the size of the package (number of strikers plus number of dedicated SEAD aircraft). It is computed by the ACP KB function ESCORTS-REQUIRED. The number varies from two aircraft to roughly the number of aircraft being protected.

The air protection operators are skip-air-protection-for-unmanned, add-self-protection-air, add-fighter-sweep, and add-dedicated-escort.

6.2.4 Add Reconnaissance

The ACP KB contains a notional capability for estimating the reconnaissance support required by strikes. Due to a variety of factors, including security classification issues regarding the nature of reconnaissance and the inherent sensitivity of these capabilities, only a notional capability was implemented.

Reconnaissance support consists of adding a PRESTRIKE-RECON action that precedes the attack by several days (in order to allow time for the data to be gathered, analyzed, and distributed), and a bomb damage assessment (BDA) action that follows the attack. Two options were implemented: reconnaissance on a per-target basis, and on a per-package basis. The former generates a very large number of actions, but reflects the scope of the problem of integrating reconnaissance with operational planning. The latter is used in practice as it generates smaller plans; however, it is unrealistic to assume that one reconnaissance action will suffice for all targets within a package. In reality, several sensors of different kinds may be required.

The operators are add-support-with-pkg-recon, add-unmanned-support-with-pkg-recon, and add-support-with-target-recon.

These operators also perform the auxiliary step of decomposing the support goal into its components of strike, escort/air protection, SEAD, and refueling. The PRESTRIKE-RECON and BDA actions are sequenced before and after these components, respectively.

6.2.5 Add Tankers and Output Support Missions

These operators take the decomposed support goals posted in the above level, and expand each into the appropriate primitive action. Except for the selection of tanker type for refueling, this step is deterministic, as all information needed to characterize the action has been previously determined.

It is at this level that tanker requirements for refueling are computed for each package, by the ACP KB function PKG-REFUELERS. This function takes into account the type of tanker, the location of the targets and the refueling point, and the type and number of all aircraft in the package.

Refueling points are specified by the predicates

(REFUEL-FOR-SECTOR sector lat lon)

(REFUEL-FOR-BLUE lat lon).

The first predicate allows the specification of refueling points for individual sectors being attacked. The second allows the specification of catch-all refueling points.

The operators comprising this level and the associated primitive actions generated are shown in Table 1.

Table 1. Add Tankers and Output Support Missions

| OPERATOR | ACTION |
|--------------------------------------|-----------------------|
| make-strike | strike |
| make-bda | bda |
| no-tanker-orbits-needed-for-unmanned | no-tankers-needed |
| make-tanker-orbits | tanker-orbits |
| make-fighter-sweep | fighter-sweep |
| no-lsead-needed | no-lethal-sead-needed |
| make-lsead | lethal-sead |
| no-escorts-needed | no-escort-needed |
| make-escorts | escort |

These operators select a preferred type of asset (aircraft) to perform the primitive action. In numerous demonstrations, the actions output by the KB are postprocessed to identify and repair shortfalls in assets. In order to identify alternative asset allocations for such postprocessing, each primitive action has a set of ASSET-USAGE predicates, which specify allowable types and numbers of assets suitable for performing the action.

7 DEDUCTIVE RULES

Several simple deductive rules in the ACP KB compute simple relationships among objects (for example, the commutativity of ADJACENT relationships among geographic sectors).

Other deductive rules localize the computations needed to compute network effectivenesses and associated threat levels. These update rules, working in conjunction with operators in the Effectiveness Computation abstraction level, compute and propagate changes to network effectivenesses.

The update rules are update-threat-level, update-additive-effectiveness, update-critical-effectiveness, and update-redundant-effectiveness. The first of these rules is triggered nonrecursively whenever the network associated with a threat changes. It computes and posts the proportional change to the threat level.

The remaining update rules work as follows. Each is triggered by an UPDATE-PARENT predicate for a network of the associated type (additive, critical, or redundant). Each computes and posts an effect to reflect the change in the parent network caused by the change to the child. For additive networks, this is a CONSUME effect. For critical networks, this is a MINLEVEL effect. For redundant networks, this is a MAXLEVEL effect. The effect causes a RESOLVE operator, rather than a DEFER operator, to be applied, which in turn triggers another UPDATE-PARENT effect for the parent. This process repeats recursively until changes to all top-level networks (and associated threats) are resolved.

8 PREDICATES

Predicates are used to model the static world state that is defined by the scenario. They are also used to model the dynamic world state that is changed due to actions planned by SIPE-2.

The predicates described here are used to capture the intelligence analysis that is part of the scenario. This analysis includes a target network specification and threat characterization.

8.1 TARGET NETWORKS

A network is designated with a NET predicate:

```
(NET <capability> <place> <composition>)
```

e.g.,

```
(NET MUNITIONS LAX ADDITIVE).
```

Each network has a capability and a place associated with it. The place specifies the extent or the coverage of the capability. It can be a point location, a sector, or a region. Each network is one of three types, or *compositions*: ADDITIVE, CRITICAL, or REDUNDANT. The composition of a network determines how the effectiveness of its parent network is computed as a function of its components. ADDITIVE means that the parent's effectiveness is a weighted sum of its components. CRITICAL means that the parent's effectiveness is the minimum effectiveness of all its components. REDUNDANT means that the parent's effectiveness is the maximum effectiveness of all its components.

In addition, all connections between a component and all its parent must be specified via a PROVIDES predicate:

```
(PROVIDES <parent-net> <child-net> <weight>)
```

e.g.,

```
(PROVIDES AIR-OPERATIONS LAX MUNITIONS LAX 1.0)
```

```
(PROVIDES MUNITIONS LAX MUNITIONS AMMO-BUNKER-A 0.6)
```

```
(PROVIDES MUNITIONS LAX MUNITIONS AMMO-BUNKER-B 0.4).
```

A weight reflecting the importance of that component must be provided. Modeling a sophisticated IADS, complete with C³, power generation, and EW/GCI* coverage for each connection can involve many hundreds or even thousands of connections.

Intrinsic capabilities are designated with NEEDS predicates:

```
(NEEDS <net> <capability> <min-effectiveness>)
```

e.g.,

```
(NEEDS COMM SOUTH-GRANOLA ELECTRICITY 0.4).
```

<min-effectiveness> is a value between 0 and 1; it is the effectiveness level to which the target network can be reduced by being denied all external sources of <capability>. In the example, a COMM network requires ELECTRICITY to function, but has backup generators that enable it to operate at 40% efficiency if external power is cut.

Each network has an effectiveness between 0 (inoperative) and 1 (fully capable), implemented as a LEVEL predicate:

```
(LEVEL <capability> <place> <when> <level>)
```

where <level> reflects the effectiveness of the network <capability> <place> on the day designated by <when>. The INITLEVEL predicate is used to initialize a network level for all days of the scenario:

```
(INITLEVEL <capability> <place> <level>).
```

*C³: command, control, and communications; EW/GCI: early warning/ground controlled interception.

Here is an example network from the Granola scenario which models the air intercept network in its southern region as a function of the airbases in or near that region. The weights reflect an intelligence estimate of the degree of intercept threat emanating from the airbase, which is based on the number and type of intercept aircraft at the base:

```
;;Airbases that contribute to <SECTOR-INTERCEPT SOUTHERN-GRANOLA>
;;Enumerate all airbases with intercept threats, weighted by threat strength
(net air-intercept SOUTHERN-GRANOLA ADDITIVE)
(initlevel air-intercept SOUTHERN-GRANOLA 1.0)
(provides air-intercept SOUTHERN-GRANOLA air-operations Yuma-Airfield 0.15)
(provides air-intercept SOUTHERN-GRANOLA air-operations Phoenix-Intl 0.07)
(provides air-intercept SOUTHERN-GRANOLA air-operations Pt-Mugu-NAS 0.20)
(provides air-intercept SOUTHERN-GRANOLA air-operations Burbank 0.45)
(provides air-intercept SOUTHERN-GRANOLA air-operations Nellis-AFB 0.03)
(provides air-intercept SOUTHERN-GRANOLA air-operations LAX 0.10).
```

8.2 THREATS

A threat is designated by a THREAT predicate:

```
(THREAT <threat> <net> <daynight> <initial-strength>)
```

e.g.,

```
(THREAT SAM-THREAT SAM-ENGAGEMENT YUMA-SECTOR 24-HOUR 150).
```

Each threat is associated with one network, and is further characterized as daylight-only, nighttime-only, or 24-hour threat.

A threat is reduced by attacking the underlying network; its current strength is represented by a LEVEL predicate:

```
(LEVEL <threat> <net> <daynight> <day> <strength>).
```

A threat is related to a place it threatens by a THREAT-AXIS predicate:

```
(THREAT-AXIS <threat> <origin> <threatened-place> <border-sector>)
```

e.g.,

```
(THREAT-AXIS strike-threat Van-Nuys loreto tijuana-sector).
```

The <border-sector> is the place where the threat crosses the border en route to <threatened-place>. If multiple crossings are possible, one THREAT-AXIS for each is specified.

Numeric threat levels are mapped to a symbolic threat rating by means of THREAT-RATING-LEVEL predicates, as shown in Table 2.

Table 2. Threat Rating Levels

| RATING | LOW | HIGH |
|-----------|-----|---------|
| NONE | 0 | 1 |
| VERY-LOW | 1 | 10 |
| LOW | 10 | 40 |
| MED | 40 | 70 |
| HIGH | 70 | 100 |
| VERY-HIGH | 100 | 9999999 |

Ratings are used in various threat reduction goals to specify symbolically the level of threat tolerable for air superiority. These predicates are used to determine the numerical reduction in the threat level that must be attained to satisfy the threat reduction goal. The <low> and <high> values are somewhat arbitrary; they are modeling parameters used in conjunction with threat levels to represent threats of differing strengths.

9 REFERENCES

- Bienkowski, M. 1998. *User's Guide: System Design and User's Manual for SIPE-2 in IFD-4*, User's Guide, ITAD-7112-UG-97-194, SRI International, Menlo Park, California (January).
- Bienkowski, M. 1997. *SOCAP-ACPT Technology Integration and Application*, Annual Report, ITAD-7112-AR-97-095, SRI International, Menlo Park, California (June).
- Deptula, COL D.A. 1996. (pamphlet) *Firing for Effect: Change in the Nature of Warfare*, Aerospace Education Foundation, Arlington, Virginia.
- Murray, W. 1995. *Air War in the Persian Gulf*, The Nautical & Aviation Publishing Company of America, Baltimore, Maryland.
- Myers, K.L. 1997. *User Guide for the Advisable Planner, Version 1.1*, SRI International, Menlo Park, California.
- Wilkins, D.E. 1997. *Using the SIPE-2 Planning System: A Manual for SIPE-2, Version 4.14*, Revised Working Document (7 February).

Appendix
JMCAP NEO DOMAIN

JMCAP NEO DOMAIN

This appendix describes the domain knowledge for the Noncombatant Evacuation Operation (NEO) domain, developed under the Joint Maritime Crisis Action Planning (JMCAP) project. We first describe the NEO domain's class hierarchy, detailing the types of objects represented in the domain and the relationships between them. Next we present the predicates of the domain, which are used to represent the state of the world at any point in the planning process. We then briefly describe the requirements for a valid initial world state in the domain. Last, we present the domain's planning operators, which are used to decompose the initial problem into a complete plan for a NEO operation.

A.1 WORLD CLASSES

The few objects of the very highest levels of the class hierarchy are shown in Figure A-1.

Most entities in the NEO domain are subclasses of Object. A Group is any collection of objects, and its subclass Evacuee-Group represents a collection of people, located in a single area, who need to be evacuated. The other two subclasses of Object, Location and Military-unit, are described in more detail below.

The subclass hierarchy under the LOCATION class is shown in Figure A-2, and listed below.

- Location—in the JMCAP domain, a location is anything that a person can be in or on. It is used in operators that move people or craft from one place to another. Descendant classes of this class can have the following properties:
 - LAT-LONG: a list (<latitude> <longitude>) that gives the location's coordinates.
 - CITY: the city in which the location is contained, if any.
 - LOCATION: a reference specifically to the location of the entity, rather than the entity as a whole. (This class was formerly used to distinguish between an embassy as an office and/or organization and an embassy as a location, but is probably not used at present.)
- Land Region—an area of land; used to distinguish between transportation operators: operators for moving across or to Land Regions are different from operators for moving across or to Water Regions.
- Water Region—an area or point on a body of water; used to distinguish between transportation operators (see Land Region).
- Craft—a class encompassing all military vehicles: boats, aircraft, tanks, etc.; used in operators where the particular type of craft is not important: e.g., ones that load military units into craft, and ones that provide helo escort to craft. Descendant classes from this class can have the following properties:
 - MINIMUM-LOAD-RATE: the slowest rate that a group of personnel can be loaded onto this craft, in persons per minute.

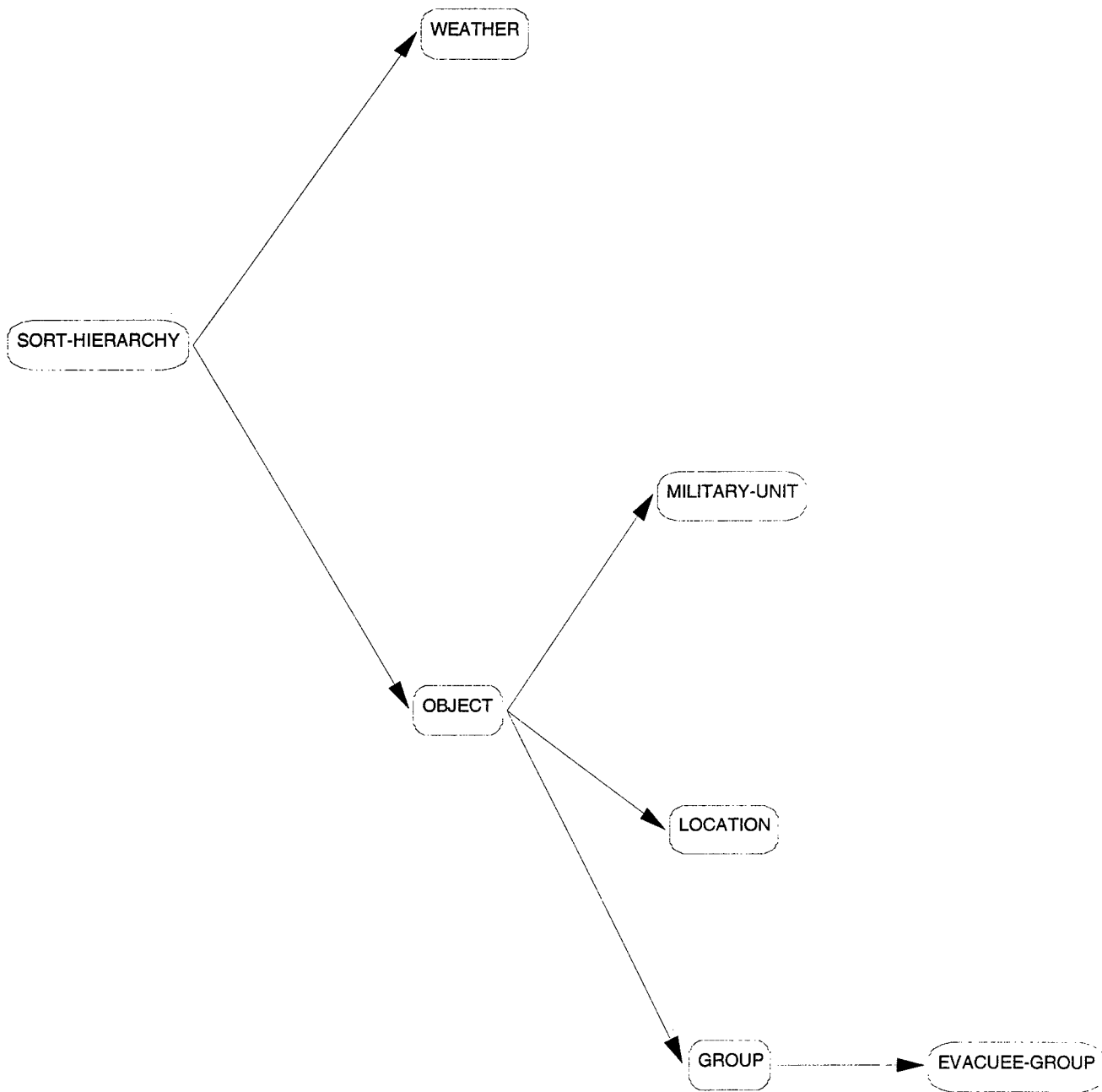


Figure A-1. Top-Level Object Hierarchy for NEO Domain

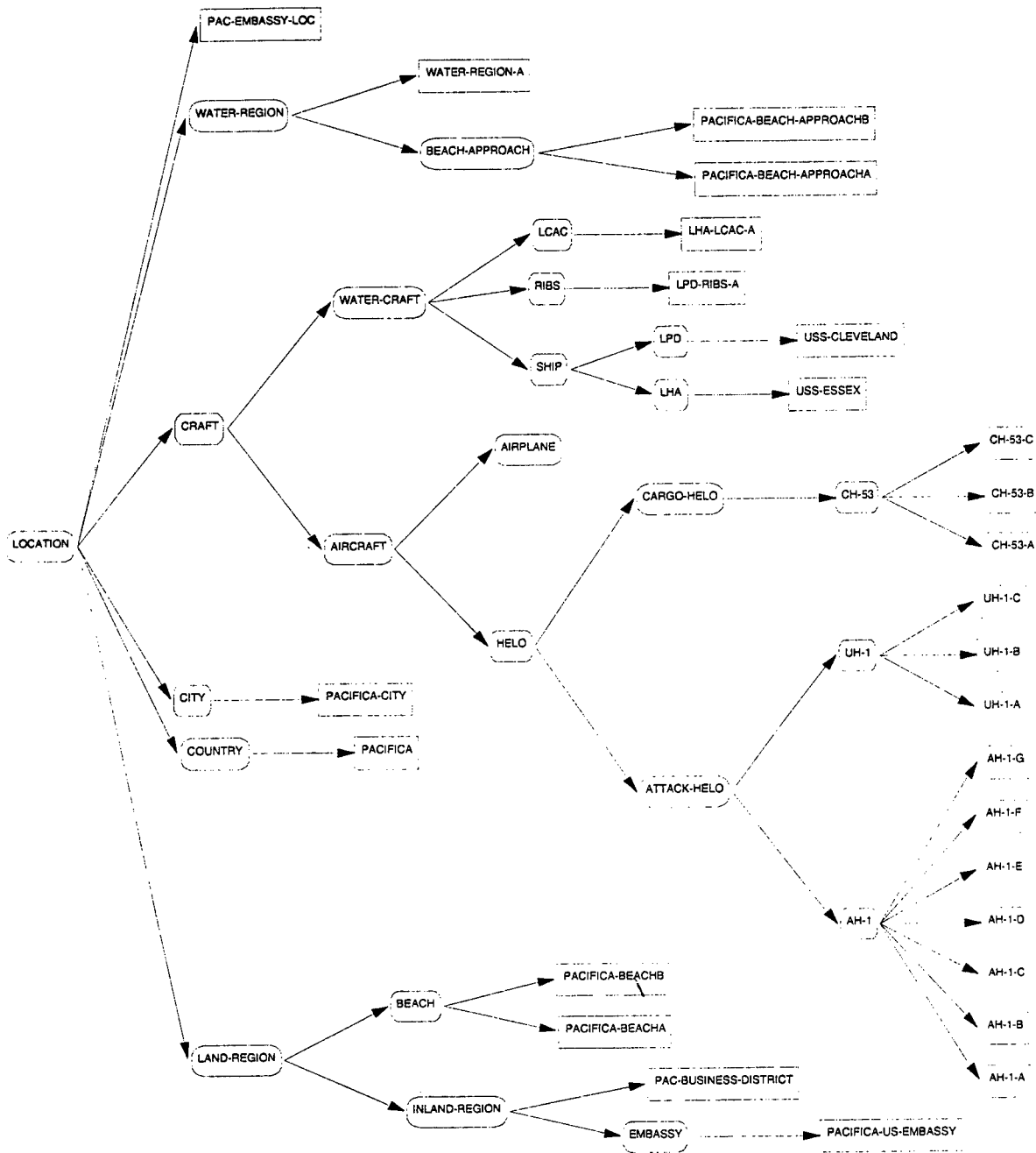


Figure A-2. Subclass Hierarchy under Location Class in NEO Domain

- City—a city; used to specify which beaches are possible sites for amphibious operations in the NEO: those that are in or adjacent to the city where the evacuees are.
- Country—a country; used to require that the government of the host country give permission to conduct the military operations.

- Beach Approach—the Water Region that is directly adjacent to a beach, i.e., the portion of the ocean that is directly offshore. This class is used for an important subpart of the NEO operation: making sure that a beach is suitable for amphibious operations includes clearing its beach approval of mines, etc.
- Water Craft—any Craft that travels across water: boats, ships, hydrofoils, etc. This particular partitioning of craft is not currently used in the JMCAP operators (although operators like OP-launch-water-craft-from-ship should probably use this class instead of Craft). Descendant classes from this class can have the following properties:
 - MAX-SPEED-OPEN-WATER-POOR-CONDITIONS: the best speed the craft can maintain in open (unmined) water under poor water and weather conditions.
 - MAX-SPEED-OPEN-WATER-IDEAL-CONDITIONS: the best speed the craft can maintain in open (unmined) water under ideal water and weather conditions.
 - MAX-SPEED-DANGEROUS-WATER-POOR-CONDITIONS: the best speed the craft can maintain in dangerous (possibly mined) water under poor water and weather conditions.
 - MAX-SPEED-DANGEROUS-WATER-IDEAL-CONDITIONS: the best speed the craft can maintain in dangerous (possibly mined) water under ideal water and weather conditions.
- Aircraft—any Craft that travels through the air: airplanes, helicopters, etc.; used to distinguish aircraft launching and transporting operations from water craft operations. Descendant classes from this class can have the following properties:
 - MAX-SPEED-POOR-CONDITIONS: the best speed the craft can maintain under poor air and weather conditions.
 - MAX-SPEED-IDEAL-CONDITIONS: the best speed the craft can maintain in under ideal air and weather conditions.
 - LCAC, RIBs, Ship, LPD, LHA, Airplane, Helo, Cargo-helo, Attack-helo, CH-53, UH-1, AH-1*—more specific subclasses and types of craft. See Tom Clancy's *Marine*[†] or a military manual for more detailed descriptions of the specific craft types.

The subclass hierarchy under the Military-Unit class is shown in Figure A-3, and listed below.

- Military-Unit—any grouping of soldiers, usually grouped for the purposes of performing a common function. Variables of this class are used in operators that do not depend on the specific type of unit being used—e.g., loading a unit to a craft. Descendant classes of this class can have the following properties:
 - UNITS: a list of the military-units under this unit's command.
 - PARENT-ORG: the military-unit above this one in the organizational chain of COMMAND.

*LCAC: Landing Craft Air Cushion; RIB: Rigid Inflatable Boats; LPD: Landing Platform Dock; LHA: Landing Helicopter Assault Carrier; CH: Cargo Helicopter; UH: Utility Helicopter; AH-1: Attack Helicopter.

†Clancy, T. 1996. *Marine: A Guided Tour of a Marine Expeditionary Unit*, Berkeley Publishing Group, Berkeley, California.

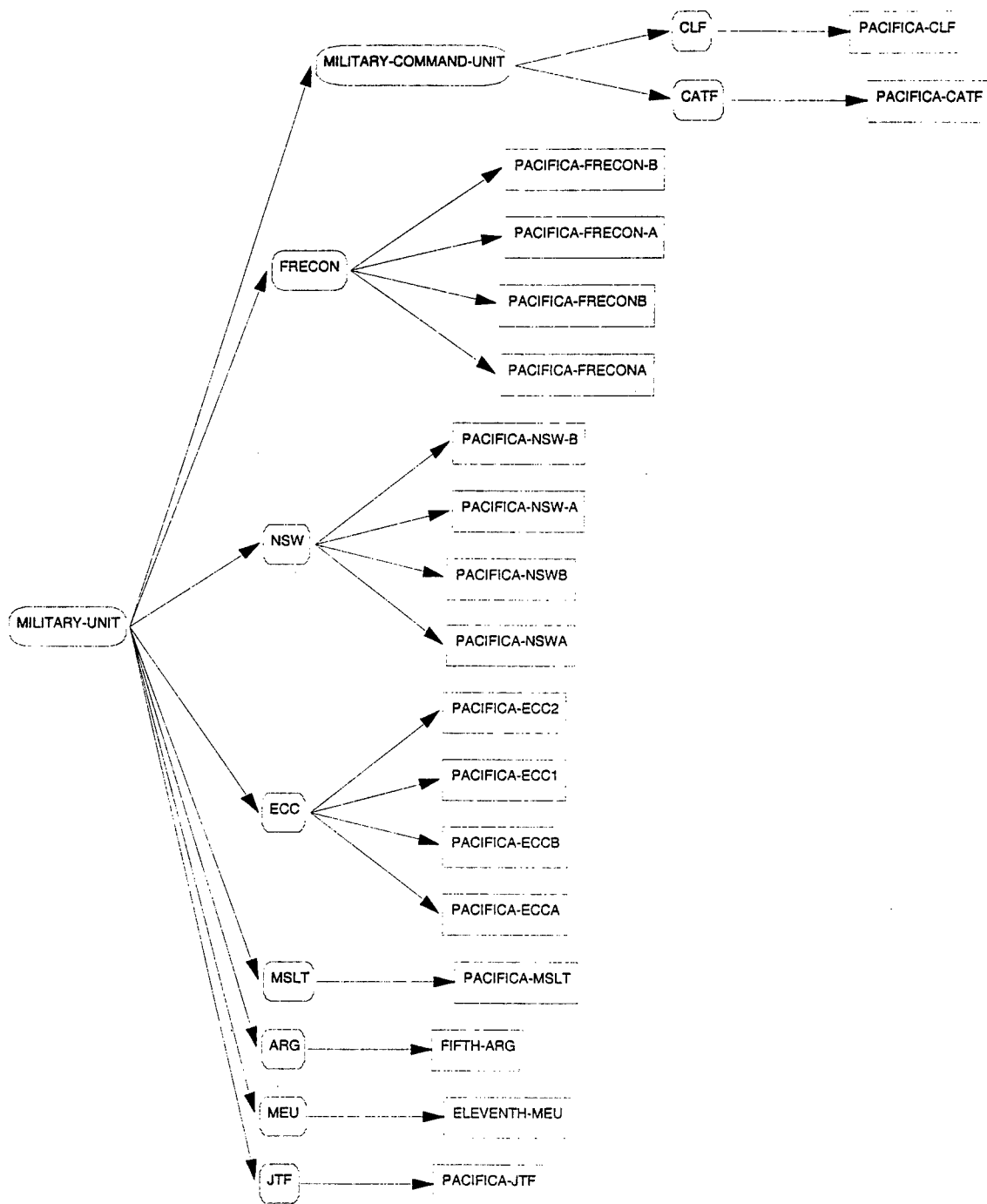


Figure A-3. Subclass Hierarchy under Military-Unit Class in NEO Domain

- COMMANDER: the name of the unit's commander.
- SIZE: the number of soldiers in the unit.
- MAX-FOOT-SPEED-POOR-CONDITIONS: the best speed the unit can maintain on foot (in miles per minute) in adverse walking/hiking conditions.
- MAX-FOOT-SPEED-IDEAL-CONDITIONS: the best speed the unit can maintain on foot (in miles per minute) in good walking/hiking conditions.

- **Military-Command-Unit**—the commander and commander’s staff of a larger military unit; used only as an intermediate subclass (no Military-Command-Unit variables appear in the JMCAP operators).
- **FRECON**—force reconnaissance unit; a U.S. Marine Corps (USMC) unit who, in the NEO scenario, are responsible for “clearing” the beach (giving an intelligence report and removing any threats) and the evacuation headquarters location.
- **NSW**—Naval special warfare unit; a Navy Seal unit that in the NEO scenario, are responsible for “clearing” the beach approach, primarily by sweeping for mines while swimming.
- **ECC**—evacuation control center unit; a unit of Marines who staff an evacuation control center and process the evacuees.
- **MSLT**—military support liaison team; a unit of Marines who set up the evacuation headquarters and coordinate relations with the other participating agencies (the host nation’s government and police force, state department, etc.).
- **ARG**—amphibious ready group; the collection of personnel and materials on the LPD and LHA.
- **MEU**—Marine Expeditionary Unit; the group of ~1,500 Marines who perform (most of) the NEO, as well as other amphibious operations. The smaller groups, like the FRECON and MSLT, are drawn from the MEU.
- **JTF**—Joint Task Force; the commander and staff who command and coordinate the entire ARG.

A.2 PREDICATES

In this subsection we list the predicates of the domain, which represent the state of the world at any point in the planning process.

- (IMMINENTLY-THREATENED <evacuee-group>)
True if the people in <evacuee-group> are threatened by political or other turmoil and are in need of evacuation.
- (PERMISSION-CONDUCT-MIL-OP <country> <military-unit>)
True if the government of <country> has granted permission to <military-unit> to conduct a military operation on their soil.
- (IN-COUNTRY <location> <country>)
True if <location> is contained inside <country>.
- (IN-CITY <location> <city>)
True if <location> is contained inside the city limits of <city>.
- (ADJACENT-REGIONS <location>-1 <location>-2)
True if both <location>s can be viewed as regions and border one another.
- (BETWEEN <location>-1 <location>-2 <location>-3)

True if <location>-1 is between <location>-2 and <location>-3, i.e., if the normal route from <location>-2 to <location>-3 (or from <location>-3 to <location>-2) passes through <location>-1.

- (PART-OF <group>-1 <group>-2)
True if <group>-1 constitutes a subset of <group>-2.
- (SIZE-OF <group> <number>)
True if <group> has <number> members in it.
- (AT-LOCATION <object> <location>)
True if <object> is at <location>. Here a <location> is almost any place or thing on or in which another object can be. Specifically, <craft> is a subtype of <location>, so ships, helicopters, and planes count as <location>s. Also, AT-LOCATION is transitive, so if (AT-LOCATION <a>) and (AT-LOCATION <c>), then it can be considered to be true that (AT-LOCATION <a> <c>). It is not, however, known whether the software enforces this transitivity automatically.
- (NUM-AMERICANS-IN <group> <number>)
True if there are <number> United States citizens who are members of <group>; not currently used in the planning process.
- (NUM-ALIEN-FAMILY-MEMBERS-IN <group> <number>)
True if there are <number> non-United States citizens who are immediate family members of United States citizens and who are members of <group>; not currently used in planning process.
- (NUM-OTHER-ELIGIBLE <group> <number>)
True if there are <number> people who are not United States citizens and not immediate family members of United States citizens, but who meet the eligibility requirements for evacuation in an United States-run NEO operation; not currently used in planning process.
- (AVAILABLE <military-unit>)
(AVAILABLE <craft>)
True if the <military-unit> or the <craft> is currently available for operations.
- (HELO-ASSIGNED-TO <helo> <craft>)
In the JMCAP domain, helicopters are paired with the craft that they will escort before planning time, rather than being dynamically selected at planning time. This predicate is true if <helo> has been designated to escort <craft> whenever <craft> is used in the future.
- (UNIT-ASSIGNED-TO <military-unit> <location>)
In the JMCAP domain, ECC units are paired with the ECC locations for which they will be responsible before planning time. This predicate is true if <military-unit> has been designated to oversee <location> during the mission.

- (CURRENT-WEATHER-CONDITIONS <weather>)
True if <weather> is an object that refers to the weather conditions of the evacuation site at the planned time for the evacuation.
- (WEATHER-CONDITIONS-SUITABLE-FOR-HELO <weather>)
True if <weather> refers to weather conditions that are suitable for helicopter operations.
- (WEATHER-CONDITIONS-SUITABLE-FOR-RIBS <weather>)
True if <weather> refers to weather conditions that are suitable for RIBs operations.
- (L-HOUR <number>)
True if <number> is the planned time for L-HOUR—the time that the LCACs land on the beach. Not presently used in planning process.

A.3 INITIAL WORLD STATE

The initial world state for a JMCAP NEO problem should generally specify the following:

1. The location (city) of the evacuees, the fact that they are imminently threatened, and the fact that the U.S. has permission to perform a military operation in the city
2. The location and size of each evacuee subgroup in the city
3. A high-level picture of the geography of the region, i.e., which regions are adjacent to which others, which are between which others, etc.
4. The locations of all the relevant craft and military units at the start of the operation
5. The availability of all relevant craft and military units for the operation
6. Assignment of attack helicopters to the craft that they will escort during the operation
7. Assignment of ECC units to the ECC sites that they will oversee during the operation
8. Whether the current weather conditions are suitable for operating the various types of craft in the NEO, e.g., helicopters and RIBs.

A.4 OPERATORS

The JMCAP operators are described in the following five subsections, according to the general objective that they support in the overall plan. Top Level operators are described first, followed by operators for clearing the beach approach, operators for clearing the beach, operators for performing an intelligence survey of the MSLT site, operators for processing and transporting the evacuees from ECC sites, and utility operators for transporting units and craft.

A.4.1 Top Level

The top-level operator, PERFORM-NEO, establishes three sequential goals: (1) clearing a beach and beach approach in or near the unstable city (FOUND-BEACH-SUITABLE-FOR-MARITIME-OPS); (2) establishing a suitable site for the evacuation headquarters (EVAC-SITE-INTEL-REPORTED); and

(3) processing and transporting the evacuees back to the ARG (EVACUEES-PROCESSED-AND-TRANSPORTED). In parallel with this sequence, it sets up a goal to prepare the ARG (LHA and LPD) to receive and accommodate the evacuees (LANDING-PREPARED).

The goal of FOUND-BEACH-SUITABLE-FOR-MARITIME-OPS is solved by the operator PERFORM-BEACH-OPERATIONS, which selects a beach to use, and sets up the parallel goals of clearing the beach approach and the beach itself (APPROACH-TO-BEACH-CLEARED and BEACH-CLEARED, respectively).

The military unit that clears the beach approach will not be used in subsequent stages of the operation, so the operator sets up a goal (RETURNED-TO) to return that unit to its ship after it has cleared the beach approach. The goal of RETURNED-TO is solved by the operator OP-TRANSPORT-GENERIC, which replaces the goal with a single primitive action for transporting the unit back to its base.

The LANDING-PREPARED goal is solved by the operator OP-PREPARE-FOR-LANDING, which simply replaces the goal with a single primitive action.

A.4.2 Clearing the Beach Approach

The goal of APPROACH-TO-BEACH-CLEARED is solved by the operator CLEAR-APPROACH-TO-BEACH, which selects an available NSW unit to perform the operation, and sets up the following sequential goals: (1) to transport the NSW to the beach approach (TRANSPORTED-TO); and (2) to have the unit perform the intelligence operations that are necessary to ensure that the beach approach is safe for an amphibious landing (BEACH-APPROACH-SECURED).

The goal of BEACH-APPROACH-SECURED is solved by OP-SECURE-BEACH-APPROACH, which replaces the goal by a single primitive action. This primitive action, SECURE-BEACH-APPROACH, represents whatever operations the NSW unit has to perform to verify the safety of the beach approach. Typically, this consists of entering the water in wet suits and swimming around looking for mines.

A.4.3 Clearing the Beach

The goal of BEACH-CLEARED is solved by OP-CLEAR-BEACH-BY-FRECON, which selects an available FRECON unit to perform the beach operations, and sets up the sequential goals of (1) transporting the FRECON to the beach (TRANSPORTED-TO-BEACH) and (2) having them verify the suitability of the beach for amphibious operations (BEACH-SURVEY-PERFORMED).

The goal of TRANSPORTED-TO-BEACH is solved by OP-TRANSPORT-UNIT-TO-BEACH-BY-RIBS-OFFSHIP-LOAD. This operator acts when the military unit to be transported and the RIBs that will transport them are on separate ships. It moves the military unit to a beach by transporting both the unit and the RIBs to a rendezvous point, loading the unit into the RIBs, and then transporting the RIBs to the beach. It sets up two sequences of goals in parallel: (1) load the military-unit into an LCAC (UNIT-LOADED), then launch the LCAC (WATER-CRAFT-LAUNCHED); and (2) launch the ribs (WATER-CRAFT-LAUNCH-REQUESTED). After these parallel goals are completed, it sequentially (1) performs a primitive action for rendezvousing the LCAC and RIBs, (2) loads the military-unit into the RIBs (UNIT-LOADED), and (3) transports the RIBs to the beach (CRAFT-TRANSPORTED-TO).

The goal of BEACH-SURVEY-PERFORMED is solved by OP-PERFORM-BEACH-SURVEY, which replaces the goal with two sequential primitive actions: (1) survey the beach for possible mines, signs of unfriendly forces, or natural hazards (PERFORM-BEACH-SURVEY); and (2) report the condition of the beach up the chain of command to the JTF (RADIO-BEACH-SUITABILITY).

A.4.4 Intelligence Survey of MSLT Site

The goal of EVAC-SITE-INTEL-REPORTED is solved by the operator PREPARE-AND-PERFORM-EVAC-SITE-REPORT, which selects an MSLT unit to perform the operation and sets up two goals in sequence: transport the unit to the evacuation headquarters location (TRANSPORTED-TO), and perform an intelligence survey of the location (COMPLETED-INTEL-REPORT).

The goal of COMPLETED-INTEL-REPORT is solved by the operator COMPLETE-INTEL-REPORT, which first performs an action to actually perform the intelligence survey (PERFORM-NEO-INTEL-SURVEY), and then performs two actions in parallel that inform the CATF and the CLF* of the results of the survey (two REPORT-INTEL-SURVEY-RESULTS actions).

A.4.5 Processing and Transporting Evacuees

The goal of EVACUEES-PROCESSED-AND-TRANSPORTED is solved by the operator OP-PROCESS-AND-TRANSPORT-EVACUEES, which does the following in parallel for each group of evacuees: select an available ECC unit, and set up a goal for that ECC to process and transport the evacuee group (EVACUEE-GROUP-PROCESSED-AND-TRANSPORTED).

The goal of EVACUEE-GROUP-PROCESSED-AND-TRANSPORTED is solved by the operator PROCESS-AND-TRANSPORT-EVACUEE-GROUP, which merely replaces the goal with a dummy action that represents the more complicated process of dealing with the evacuee group. (More operators are needed for this portion of the planning process.)

A.5 UTILITY OPERATORS

This subsection describes operators that are involved in transporting military units and craft.

The goal of transporting a military unit (TRANSPORTED-TO) can be solved by either of two operators, TRANSPORT-UNIT-VIA-RIBS-ONBOARD-LOAD and OP-TRANSPORT-UNIT-BY-FOOT. The former fires when the unit is onboard a ship, which is the case when a FRECON unit must be transported to a beach to clear it for amphibious operations. This operator sets up three goals in sequence: (1) load the unit to the RIBs (UNIT-LOADED); (2) launch the RIBs from the ship (WATER-CRAFT-LAUNCHED); and (3) transport the RIBs to its destination (CRAFT-TRANSPORTED-TO).

The latter operator, OP-TRANSPORT-UNIT-BY-FOOT, fires when the unit is on land, which is the case by the time the FRECON is needed to go to the evacuation site headquarters to survey that location. This operator replaces the TRANSPORTED-TO goal with a primitive action, TRANSPORT-UNIT-BY-FOOT, that represents the unit's hiking to its destination.

*CATF: Commander Amphibious Task Force; CLF: Commander Landing Force.

A UNIT-LOADED goal can be solved by one of two operators, OP-LOAD-UNIT-TO- CRAFT and LOAD-UNIT-ON-SHIP. The former operator replaces the UNIT-LOADED goal with a primitive action representing the loading. The latter operator sets up a call of the unit primitive action before the loading action.

A WATER-CRAFT-LAUNCHED goal is solved by the operator OP-LAUNCH-WATER-CRAFT-FROM-SHIP, which replaces the goal with three primitive actions in parallel: an action that launches the craft, and actions that launch two separate attack helicopters to escort the water craft.

A CRAFT-TRANSPORTED-TO goal can be solved by one of four operators, OP-TRANSPORT-CRAFT-TO-NONBEACH, OP-TRANSPORT-CRAFT-BY-STEPS, OP-TRANSPORT-CRAFT-TO-BEACH, and OP-TRANSPORT-AIRCRAFT-INLAND. These operators are described in the next four paragraphs.

OP-TRANSPORT-CRAFT-TO-NONBEACH fires when the destination of the craft is not a beach, and its source is a water region. The operator sets up two things in parallel: (1) a primitive action that represents the movement of the craft from source to destination, and (2) a set of parallel goals, one for each helicopter that is escorting the craft, to maintain the helicopter escort for the duration of the transportation (CRAFT-ESCORTED-BY-HELO).

OP-TRANSPORT-CRAFT-BY-STEPS fires when a location L is between the craft's source and its destination. This operator sets up two sequential CRAFT-TRANSPORTED-TO goals, one to travel from the source to L, and one to travel from L to the destination. Before establishing these goals, the operator sets up a dummy primitive action, which is necessary for phantomization to work correctly in the domain.

OP-TRANSPORT-CRAFT-TO-BEACH fires when the destination of the craft is a beach, and the craft is already at an adjacent beach approach. This operator sets up a goal that the beach approach be cleared of mines (APPROACH-TO-BEACH-CLEARED), followed by the same plot as the one set up by OP-TRANSPORT-CRAFT-TO-NONBEACH. In a particular JMCAP scenario, this APPROACH-TO-BEACH-CLEARED goal will be phantomized by the NSW's operations, which will already have cleared the beach approach in another part of the plan.

OP-TRANSPORT-AIRCRAFT-INLAND fires when the craft to be transported is an aircraft, when its destination is inland, and when it is already airborne (i.e., it has already been launched). This operator sets up essentially the same plot as OP-TRANSPORT-CRAFT-TO-NONBEACH.

A goal of CRAFT-ESCORTED-BY-HELO is solved by OP-ESCORT-CRAFT-BY-HELO, which replaces the goal with a primitive action representing the helicopter escort.

DISTRIBUTION LIST

| addresses | number of copies |
|---|---------------------|
| WAYNE A. BOSCO AFRL/IFTB 525 BROOKS ROAD ROME NY 13441-4505 | 4 |
| SRI INTERNATIONAL 333 RAVENSWOOD AVENUE MENLO PARK CA 94025-3493 | 5 |
| AFRL/IFOIL TECHNICAL LIBRARY 26 ELECTRONIC PKY ROME NY 13441-4514 | 1 |
| ATTENTION: DTIC-OCC DEFENSE TECHNICAL INFO CENTER 8725 JOHN J. KINGMAN ROAD, STE 0944 FT. BELVOIR, VA 22060-6218 | 2 |
| DEFENSE ADVANCED RESEARCH PROJECTS AGENCY 3701 NORTH FAIRFAX DRIVE ARLINGTON VA 22203-1714 | 1 |
| DR JAMES ALLEN COMPUTER SCIENCE DEPT/BLDG RM 732 UNIV OF ROCHESTER WILSON BLVD ROCHESTER NY 14627 | 1 |
| DR YIGAL ARENS USC-ISI 4676 ADMIRALTY WAY MARINA DEL RAY CA 90292 | 1 |
| DR MARIE A. BIENKOWSKI SRI INTERNATIONAL 333 RAVENSWOOD AVE/EK 337 MENLO PRK CA 94025 | 1 |

DR MARK S. BODDY 1
HONEYWELL SYSTEMS & RSCH CENTER
3660 TECHNOLOGY DRIVE
MINNEAPOLIS MN 55418

DR MARK BURSTEIN 1
BBN SYSTEMS & TECHNOLOGIES
10 MOULTON STREET
CAMBRIDGE MA 02138

DR THOMAS L. DEAN 1
BROWN UNIVERSITY
DEPT OF COMPUTER SCIENCE
P.O. BOX 1910
PROVIDENCE RI 02912

DR PAUL R. COHEN 1
UNIV OF MASSACHUSETTS
COINS DEPT
LEDERLE GRC
AMHERST MA 01003

DR JON DOYLE 1
LABORATORY FOR COMPUTER SCIENCE
MASS INSTITUTE OF TECHNOLOGY
545 TECHNOLOGY SQUARE
CAMBRIDGE MA 02139

DR MICHAEL FEHLING 1
STANFORD UNIVERSITY
ENGINEERING ECO SYSTEMS
STANFORD CA 94305

RICK HAYES-ROTH 1
CIMFLEX-TEKNOWLEDGE
1810 EMBARCADERO RD
PALO ALTO CA 94303

DR JIM HENDLER 1
UNIV OF MARYLAND
DEPT OF COMPUTER SCIENCE
COLLEGE PARK MD 20742

MR. MARK A. HOFFMAN 1
ISX CORPORATION
1165 NORTHCHASE PARKWAY
MARIETTA GA 30067

DR RON LARSEN 1
NAVAL CMD, CONTROL & OCEAN SUR CTR
RESEARCH, DEVELOP, TEST & EVAL DIV
CODE 444
SAN DIEGO CA 92152-5000

DR. ALAN MEYROWITZ 1
NAVAL RESEARCH LABORATORY/CODE 5510
4555 OVERLOOK AVE
WASH DC 20375

ALICE MULVEHILL 1
BBN
10 MOULTON STREET
CAMBRIDGE MA 02238

DR DREW MCDERMOTT 1
YALE COMPUTER SCIENCE DEPT
P.O. BOX 2158, YALE STATION
51 PROSPECT STREET
NEW HAVEN CT 06520

DR DOUGLAS SMITH 1
KESTREL INSTITUTE
3260 HILLVIEW AVE
PALO ALTO CA 94304

DR. AUSTIN TATE 1
AI APPLICATIONS INSTITUTE
UNIV OF EDINBURGH
80 SOUTH BRIDGE
EDINBURGH EH1 1HN - SCOTLAND

DIRECTOR 1
DARPA/ITO
3701 N. FAIRFAX DR., 7TH FL
ARLINGTON VA 22209-1714

DR STEPHEN F. SMITH 1
ROBOTICS INSTITUTE/CMU
SCHENLEY PRK
PITTSBURGH PA 15213

DR JONATHAN P. STILLMAN 1
GENERAL ELECTRIC CRD
1 RIVER RD, RM K1-5C31A
P. O. BOX 8
SCHENECTADY NY 12345

DR EDWARD C.T. WALKER
BBN SYSTEMS & TECHNOLOGIES
10 MOULTON STREET
CAMBRIDGE MA 02138

1

DR BILL SWARTOUT
USC/ISI
4676 ADMIRALTY WAY
MARINA DEL RAY CA 90292

1

DR MATTHEW L. GINSBERG
CIRL, 1269
UNIVERSITY OF OREGON
EUGENE OR 97403

1

MR JEFF GROSSMAN, CO
NCCOSC RDTE DIV 44
5370 SILVERGATE AVE, ROOM 1405
SAN DIEGO CA 92152-5146

1

DR ADELE E. HOWE
COMPUTER SCIENCE DEPT
COLORADO STATE UNIVERSITY
FORT COLLINS CO 80523

1

DR LESLIE PACK KAEHLING
COMPUTER SCIENCE DEPT
BROWN UNIVERSITY
PROVIDENCE RI 02912

1

DR SUBBARAO KAMBHAMPATI
DEPT OF COMPUTER SCIENCE
ARIZONA STATE UNIVERSITY
TEMPE AZ 85287-5406

1

DR MARTHA E POLLACK
DEPT OF COMPUTER SCIENCE
UNIVERSITY OF PITTSBURGH
PITTSBURGH PA 15260

1

DR MANUELA VELOSO
CARNEGIE MELLON UNIVERSITY
SCHOOL OF COMPUTER SCIENCE
PITTSBURGH PA 15213-3891

1

DR DAN WELD
DEPT OF COMPUTER SCIENCE & ENG
MAIL STOP FR-35
UNIVERSITY OF WASHINGTON
SEATTLE WA 98195

1

DR TOM GARVEY
DARPA/ISO
3701 NORTH FAIRFAX DRIVE
ARLINGTON VA 22203-1714

1

DIRECTOR
ARPA/ISO
3701 NORTH FAIRFAX DRIVE
ARLINGTON VA 22203-1714

1

OFFICE OF THE CHIEF OF NAVAL RSCH
ATTN: MR PAUL QUINN
CODE 311
800 N. QUINCY STREET
ARLINGTON VA 22217

1

DR GEORGE FERGUSON
UNIVERSITY OF ROCHESTER
COMPUTER STUDIES BLDG, RM 732
WILSON BLVD
ROCHESTER NY 14627

1

DR STEVE HANKS
DEPT OF COMPUTER SCIENCE & ENG'G
UNIVERSITY OF WASHINGTON
SEATTLE WA 98195

1

DR ADNAN DARWICHE
INFORMATION & DECISION SCIENCES
ROCKWELL INT'L SCIENCE CENTER
1049 CAMINO DOS RIOS
THOUSAND OAKS CA 91360

1

MR. ROBERT J. KRUCHTEN
HQ AMC/SCA
203 W LOSEY ST, SUITE 1016
SCOTT AFB IL 62225-5223

1

DR. MAREK RUSINKIEWICZ
MICROELECTRONCS & COMPUTER TECH
3500 WEST BALCONES CENTER DRIVE
AUSTIN, TX 78759-6509

1

MAJOR DOUGLAS DYER/ISO
DEFENSE ADVANCED PROJECT AGENCY
3701 NORTH FAIRFAX DRIVE
ARLINGTON, VA 22203-1714

1

DR. STEVE LITTLE
MAYA DESIGN GROUP
2100 WHARTON STREET S&E 702
PITTSBURGH, PA 15203-1944

1

NEAL GLASSMAN
AFOSR
110 DUNCAN AVENUE
BOLLING AFB, WASHINGTON, D.C.
29332

1