

320048

JPRS 81828

23 September 1982

# China Report

PLANT AND INSTALLATION DATA

No. 38

19981130 114

**FBIS**

FOREIGN BROADCAST INFORMATION SERVICE

Reproduced From  
Best Available Copy

REPRODUCED BY  
NATIONAL TECHNICAL  
INFORMATION SERVICE  
U.S. DEPARTMENT OF COMMERCE  
SPRINGFIELD, VA. 22161

DTIC QUALITY INSPECTED 3

3  
511  
A04

#### NOTE

JPRS publications contain information primarily from foreign newspapers, periodicals and books, but also from news agency transmissions and broadcasts. Materials from foreign-language sources are translated; those from English-language sources are transcribed or reprinted, with the original phrasing and other characteristics retained.

Headlines, editorial reports, and material enclosed in brackets [] are supplied by JPRS. Processing indicators such as [Text] or [Excerpt] in the first line of each item, or following the last line of a brief, indicate how the original information was processed. Where no processing indicator is given, the information was summarized or extracted.

Unfamiliar names rendered phonetically or transliterated are enclosed in parentheses. Words or names preceded by a question mark and enclosed in parentheses were not clear in the original but have been supplied as appropriate in context. Other unattributed parenthetical notes within the body of an item originate with the source. Times within items are as given by source.

The contents of this publication in no way represent the policies, views or attitudes of the U.S. Government.

#### PROCUREMENT OF PUBLICATIONS

JPRS publications may be ordered from the National Technical Information Service, Springfield, Virginia 22161. In ordering, it is recommended that the JPRS number, title, date and author, if applicable, of publication be cited.

Current JPRS publications are announced in Government Reports Announcements issued semi-monthly by the National Technical Information Service, and are listed in the Monthly Catalog of U.S. Government Publications issued by the Superintendent of Documents, U.S. Government Printing Office, Washington, D.C. 20402.

Correspondence pertaining to matters other than procurement may be addressed to Joint Publications Research Service, 1000 North Glebe Road, Arlington, Virginia 22201.

23 September 1982

CHINA REPORT  
PLANT AND INSTALLATION DATA

No. 38

CONTENTS

I. Metallurgical Industry.....	1
II. Transportation Equipment Industry.....	3
III. Electronic and Precision Equipment Industries.....	6
IV. Chemical Industry.....	11
V. Fuel and Power Industries.....	15
VI. Machine-Building Industry.....	24
VII. Miscellaneous Industries.....	28
VIII. Photographs of Industrial Facilities.....	32

## I. METALLURGICAL INDUSTRY

Item: Jinchuan Nonferrous Metals Corporation  
[6855 1557 2589 5351 6855 1466 0361 0674]

Location: Sichuan, PRC

Data: [1] This corporation is the largest enterprise in the country producing nickel, cobalt and platinum group metals. The majority of the workers employed in the workshop producing platinum, palladium, rhodium, iridium, osmium and ruthenium metals are young people 30 years old or younger and a number of them are holding responsible jobs. In 1981, the workshop's platinum and palladium output registered a 20-percent increase over 1980 and its output of rhodium, iridium, osmium and ruthenium showed a 3.5 fold rise over that of 10 years ago when the workshop was established.

[2] This corporation has added another new product--electrolytic cobalt in 1982. After it produced the first batch of products in January, by mid-May, it turned out 15 metric tons of electrolytic cobalt, fulfilling the 1982 production plan by 60 percent.

Source: Lanzhou GANSU RIBAO in Chinese [1] 15 Mar 82 p 2  
[2] 17 May 82 p 1

Item: Benxi Iron and Steel Company  
[2609 3005 6921 6993 0361 0674]

Location: Benxi, Liaoning, PRC

Data: This company has been pursuing a policy of purchasing domestically manufactured or available parts for its advanced ore mining machinery imported from abroad in recent years in order to save huge amounts of foreign exchange and to provide more work for the domestic machine-building industry. Since the beginning of 1982, this company has signed contracts with 22 factories for 96,000 spare parts. Owing to the increase in domestic orders for parts, 80 percent of the parts for its imported ore mining equipment was made domestically.

Source: Shenyang LIAONING RIBAO in Chinese 11 Jul 82 p 1

Item: Baiyin Institute of Mining and Metallurgy  
[4101 6892 4349 0396 4282 4496 2096]

Location: Baiyin, Gansu, PRC

Data: The emulsified petroleum explosive developed by this institute, which is subordinate to the Ministry of Metallurgical Industry, has passed an evaluation test at a recent technical meeting called by the Gansu Metallurgical Bureau. The explosives were successfully tested in the Shizishan Mine of Tongling, the small iron mines in Baiyin, and the Longshou Mine in Jinchuan. The metallic ore mines and railway, water conservancy and building materials departments are popularizing the use of this type of explosives.

Source: Lanzhou GANSU RIBAO in Chinese 16 Jul 82 p 2

Item: Shoudu Iron and Steel Mill  
[7445 6757 6921 6993 0617]

Location: Beijing, PRC

Data: A 5-day report meeting on learning from the experiences of this mill in implementing economic responsibility systems concluded in Guangzhou on 7 July. Over 3,000 representatives from all parts of the province attended the meeting. They praised the experiences of this plant as applicable to industry and communications enterprises and other trades in the province. Comrade Liang Lingguang called on the industry and communications system and all economic departments in Guangdong and Guangzhou to learn from the spirit of this plant and do well in enhancing economic responsibility systems and improving economic returns in the enterprises.

Source: Guangzhou Guangdong Provincial Service in Mandarin 1000 GMT  
7 Jul 82 HK

## II. TRANSPORTATION EQUIPMENT INDUSTRY

Item: Civil Aviation Plant No 102  
[3046 5300 0001 7190 1708 0617]

Location: Shanghai, PRC

Data: This plant has successfully trial-manufactured China's first aircraft towing vehicle--QCY-14 aircraft towing truck. It is now in operation at the Beijing airport. With a 200-ton towing capacity, the vehicle is suitable for towing Y-10, Y-8, Boeing 707, IL-62 and DC-8 aircraft.

Source: Shanghai WEN HUI BAO in Chinese 15 Jun 82 p 1

Item: Nanjing Port  
[0589 0079 3263]

Location: Nanjing, Jiangsu, PRC

Data: Construction of this port's Xinshengyu Port Zone project was started at the end of May. This project is located 350 kilometers from the mouth of the Changjiang River and has a channel 800 meters wide and a deep water shoreline 2,000 meters long. Fifteen thousand-ton class ships can reach the port area directly from Shanghai's Wusongkou. It fits the description as an excellent natural deep-water port. Completion of this project will have a major significance in expanding the domestic and foreign trade along the coastal areas of North and East China and areas south of the Changjiang River regions. It will also receive the pressure on the port of Shanghai.

Source: Harbin HEILONGJIANG RIBAO in Chinese 8 Jun 82 p 4

Item: Shanghai Aircraft Manufacturing Plant  
[0006 3189 7378 2623 0455 6644 0617]

Location: Shanghai, PRC

Data: Since the beginning of 1981, this plant has signed contracts with foreign firms totaling more than 5.7 million yuan. Another eight contracts are currently being negotiated. It has recently manufactured products for the Douglas Aircraft Corporation's DC9 Super 80.

Source: Shanghai WEN HUI BAO in Chinese 16 Aug 82 p 1

Item: Fugu Xian Shipyard  
[1650 6253 4905 6644 5307 0617]

Location: Fugu County, Shaanxi, PRC

Data: Yulin Prefecture's first motor-driven steel passenger ship built by this shipyard held its first trial run along the Yellow River between Fugu and Mazhen of Shenmu County on 25 April. It has begun carrying passengers recently. Built with the help of the Red Flag Shipyard in Ankang Prefecture, the passenger ship measures 26.28 meters in length and 4.4 meters in width and weighs 22 metric tons. With a speed of 16 kilometers per hour, the vessel carries 100 passengers and has a load capacity of 8 metric tons.

Source: Xi'an SHAANXI RIBAO in Chinese 15 May 82 p 1

Item: Duerbote Monggol Autonomous Xian Sheet Metal Plant  
[2659 1422 0130 3676 5336 0657 2469 5261 3112 4905 5631 6993 0617]

Location: Duerbote Monggol Autonomous County, Heilongjiang, PRC

Data: By the end of May, this plant has built 45 sheet metal fishing boats and employed trucks to transport them to 13 major fish breeding areas, including Lianhuan Lake, Taihuo and Keertai.

Source: Harbin HEILONGJIANG RIBAO in Chinese 8 Jun 82 p 2

Item: Heihe Shipping Bureau  
[7815 3109 5300 6663 1444]

Location: Heilongjiang Province, PRC

Data: Heilongjiang's first mobile-type mechanized river loading vessel is now operating along the wharves near Heihe Port. Built by this bureau, the ship is equipped with a winch, a light model belt conveyor, a "life-saving" pump and other equipment. It can go to any port and can load or unload 60 to 120 metric tons of cargo an hour. The vessel is also capable of saving sinking ships.

Source: Harbin HEILONGJIANG RIBAO in Chinese 5 Jun 82 p 1

III. ELECTRONIC AND PRECISION EQUIPMENT INDUSTRIES

Item: Wuxi Electronic Computer Plant  
[2477 6932 7193 1311 6060 4615 2623 0617]

Location: Wuxi, Jiangsu, PRC

Data: In cooperation with the Beijing University, this plant has built a practical prototype of Chinese characters/English information processing system controlled by a microcomputer. The machine, the size of an ordinary desk, has passed an appraisal test conducted by the General Computer Bureau of the Ministry of Electronics Industry. It was the unanimous opinion of representatives who were present at the appraisal meeting that the entire system is up to the advanced domestic standards in both software and hardware and has a distinct feature as compared to similar products manufactured abroad.

Source: Shanghai JIEFANG RIBAO in Chinese 5 Jul 82 p 3

Item: Jilin City Semiconductor Parts Plant No 2  
[0679 2651 1579 0584 1418 7555 0892 0115 1708 0617]

Location: Jilin City, Jilin Province, PRC

Data: Subordinate to the Jilin City Electronic Instruments and Meters Bureau and employing 396 staff members and workers, this plant produces high power silicon rectifier components and makes cadmium sulfide solar batteries. In 1978 and 1979, it violated the state policy on quality control, turning out poor quality products and incurring financial losses. For this it was severely criticized by the State Economic Commission, State General Standard Bureau, the Fourth Ministry of Machine-Building, and the provincial and municipal economic bureaus. In early 1980, the plant was in such a dilemma that it almost had to close down operations. Realizing the absolute necessity of having an all-round quality control system, and after 1 year of reorganization efforts, this plant was saved from being closed down.

Source: Beijing ZHILIANG GUANLI [QUALITY CONTROL] in Chinese No 3, 1982 p 2

Item: Tianguang Electrical Plant  
[1131 0342 7193 1562 0617]

Location: Gansu Province, PRC

Data: A batch of advanced integrated circuits, including ECL ultra-speed integrated circuits and LSTTL high-speed low power consumption integrated circuits, has been produced here. These new products are sorely needed by the national economy and the defense construction industry and find extensive applications in the fields of large-scale high-speed electronic computers, space travel, satellites, radar, digital communication systems, data transmission, industrial automatic controls, and instruments and meters, which China was unable to manufacture before and had to rely on imports.

Source: Xi'an SHAANXI RIBAO in Chinese 22 Jun 82 p 3

Item: Benxi City General Electronic Clock Plant  
[2609 3005 1579 7193 1311 6988 4920 0617]

Location: Benxi, Liaoning, PRC

Data: An engineer of this plant and technicians of the Benxi Radio Plant No. 12 have successfully produced a conducting plastic to take the place of conducting metals. This new conducting material and a long-life potentiometer made of this conducting plastic have passed an appraisal test at a technical meeting held in Benxi City on 25 May. The successful trial production of this new conducting plastic has filled a void in China's S/T research programs.

Source: Shenyang LIAONING RIBAO in Chinese 27 May 82 p 1

Item: Foshan Radio Plant No 1  
[0154 1472 3541 4848 7193 0001 0617]

Location: Foshan, Guangdong, PRC

Data: This plant turned out in 1981, 700,000 radio receivers, recording machines and television sets, its principal products. Beside supplying the domestic market, it exported some of these products to foreign countries.

Source: Beijing GONGREN RIBAO in Chinese 5 Jun 82 p 1

Item: Tongjiang Transistor Plant  
[6639 3068 2533 7555 4619 0617]

Location: Harbin, Heilongjiang, PRC

Data: This plant is turning out 16 different varieties of electronic products, including QM-N5 gas-sensitive components, of which it will export 600,000 in 1982, LM silicon force-sensitive components, QM-N5 317 smoke-sensitive components, and SM moisture-sensitive semi-conductors. Its magnetodiode has filled a gap in China's electronic industry.

Source: Harbin HEILONGJIANG RIBAO in Chinese 2 Jul 82 p 1

Item: Mudanjiang City Instrument and Meter Plant No 2  
[3665 0030 3068 1579 0308 5903 1708 0617]

Location: Mudanjiang City, Heilongjiang, PRC

Data: This plant has successfully produced a QT811 automobile fuel saving device with a fuel-saving rate of 9 percent. The department concerned has evaluated and tested the device which is up to the design requirements. The device has been installed on more than 1,100 motor vehicles in Mudanjiang City.

Source: Harbin HEILONGJIANG RIBAO in Chinese 22 Jul 82 p 1

Item: Shanghai Television Plant No 1  
[0006 3189 7193 6018 0001 0617]

Location: Shanghai, PRC

Data: This plant's color television set assembly line imported from Japan has assembled 30,000 TV sets since trial operation began early this year. This project, construction of which began in November 1980, has an annual output of 200,000 14-inch and 22-inch color television sets.

Source: Shanghai JIEFANG RIBAO in Chinese 14 Jul 82 p 1

Item: Unidentified Plant  
[2673 0617]

Location: Presumably in Lanzhou, Gansu, PRC

Data: With the help of scientific research units, the optical workshop of this plant has successfully produced a pair of radiation-proof eyeglasses that give excellent protection to eyes. Its ultra-violet and X-ray absorption capacity is up to the domestic standards of similar domestic products and its visible optical transmission rate surpasses that of similar products manufactured in China.

Source: Lanzhou GANSU RIBAO in Chinese 26 May 82 p 1

Item: Mei Xian Quartz Mine  
[4168 4905 4258 5391 4349]

Location: Mei County, Shaanxi Province, PRC

Data: The Shaanxi Geological Department recently discovered a rich quartz mine here. Construction of a highway leading to the mine has been completed. During the January-May 1982 period while construction was still going on, the mine has produced nearly 2,000 metric tons of quartz.

Source: Xi'an SHAANXI RIBAO in Chinese 15 Jul 82 p 1

IV. CHEMICAL INDUSTRY

Item: Shanghai General Petrochemical Plant  
[0006 3189 4258 0553 4920 0617]

Location: Shanghai, PRC

Data: As of the end of May, this plant has turned over to the state 2.74 billion yuan in profits and taxes, exceeding the total investment of 2.17 billion yuan by 570 million yuan. During the 3 years since it officially started operation, the plant has produced 390,000 metric tons of polyacrylonitrile, vinylon and dacron, 330,000 metric tons of high-pressure polyethylene plastics, and 2.5 million metric tons of chemical raw materials.

Source: Beijing GONGREN RIBAO in Chinese 14 Jun 82 p 1

Item: Liangshan Zhou Phosphate Fertilizer Plant  
[0404 1472 1558 4340 5142 0617]

Location: Liangshan Yi Autonomous Zhou, Sichuan, PRC

Data: This plant was built with state assistance in an effort to improve the phosphorus-deficient farmland in the zhou. It has an annual output capacity of 15,000 metric tons of sulfuric acid and 30,000 metric tons of calcium superphosphate.

Source: Chengdu SICHUAN RIBAO in Chinese 25 Jun 82 p 2

Item: Jiuquan Prefecture Clay Plant  
[6794 2164 0966 0575 4724 0960 0617]

Location: Jiuquan, Gansu, PRC

Data: With the help of the Yumen Petroleum Administrative Bureau, this plant has after one year's efforts, produced an up-to-standard new product--barite powder--and put it into production in September 1981. So far it has turned out more than 2,000 metric tons of barite powder and distributed them to the petroleum industrial bases in Gansu, Xinjiang and Qinghai.

Source: Lanzhou GANSU RIBAO in Chinese 15 Mar 82 p 2

Item: Yongan Barite Mine  
[3057 1344 6850 2533 4258 4349]

Location: Yongan County in western Fujian, PRC

Data: This large barite mine was recently discovered by a geological team of Fujian Province. Preliminary investigations showed that the mine has a reserve of 1.6 million metric tons, most of which are of high grade and open-pit minerals. The newly discovered barite deposits are located near highways and railroads, making it easy to transport them to other areas. Barite has broad applications in the oil-drilling, paper- and paint-making and pharmaceutical industries.

Source: Fuzhou FUJIANG RIBAO in Chinese 20 Apr 82 p 1

Item: Heyuan Fluorite Mine  
[3109 3293 5821 4258 4349]

Location: Heyuan County, Guangdong Province, PRC

Data: This is the largest fluorite mine found in Guangdong Province. Fluorite is an important raw material for the metallurgical and chemical industries. It also finds wide applications in the glass, ceramics, enamel, cement, refrigeration, and defense industries. The primary vein measures 2 to 7 kilometers in length and 2 to 4 meters in thickness. The ore contains on the average of 85.9 percent of calcium fluorites and top-grade ore accounts for 63 percent.

Source: Guangzhou GUANGZHOU RIBAO in Chinese 29 Jul 82 p 2

Item: Nanzheng Xian Nitrogenous Fertilizer Plant  
[0589 6774 4905 8644 5142 0617]

Location: Nanzheng County, Shaanxi, PRC

Data: By making greater use of the waste materials, primarily waste gas, solid waste and liquid waste, this plant was able to cut down the chemical fertilizer production cost per ton from 219.34 to 133.5 yuan. In the first quarter of 1982, it realized a profit of 120,000 yuan. The recovery of waste materials at the plant also helps to reduce pollution.

Source: Xi'an SHAANXI RIBAO in Chinese 22 Jun 82 p 1

Item: Yingkou Salt Chemicals Plant  
[3602 0656 7770 0553 0617]

Location: Yingkou, Liaoning, PRC

Data: Charged with the task of reprocessing salt for civilian and industrial uses in the three northeastern provinces, this plant has by 31 May produced 23,090 metric tons of concentrated salt and 16,409 metric tons of pulverized washing salt, setting a new output record for this period in its history.

Source: Shenyang LIAONING RIBAO in Chinese 4 Jun 82 p 1

Item: Daqing Industrial Complex  
[2192 1987 1562 2814 5114 0678 0120 2814]

Location: Daqing, Heilongjiang, PRC

Data: The biggest chemical industrial project of Heilongjiang Province, this complex is under construction and is expected to be completed by the end of this year. The construction site is located 12 km north of the Anda County seat. The project includes 13 sets of production equipment, of which 9 sets were imported from foreign countries and are modern style. The chemical industrial complex is expected to have a 530,000-ton annual output of organic chemical industrial raw materials and chemical fibers and to hand over 820 million yuan of profits and taxes annually to the state.

Source: Harbin Heilongjiang Provincial Service in Mandarin 1100 GMT  
24 Jul 82 SK

V. FUEL AND POWER INDUSTRIES

Item: Yangquan Mining Administrative Bureau  
[7122 2164 4349 0523 1444]

Location: Yangquan, Shanxi, PRC

Data: A heavy rainstorm hit this bureau's No 1 Mine at 5:36 p.m. on 29 July, flooding the shaft openings, plant buildings, and workers' dormitories, stopping underground operations, causing gas pipelines to rupture, and interrupting the transport system. Undaunted, the mine's party committee organized three underground and surface rescue teams to save the situation. Production was resumed at 9:20 p.m. that very night and the flood victims on the ground surface were moved to safety.

Source: Beijing GONGREN RIBAO in Chinese 31 Jul 82 p 1

Item: Weijiadi Mine Shaft  
[7614 1367 0966 4349 0064]

Location: Gansu, PRC

Data: Construction of the primary and secondary shafts of this vertical shaft project, the largest in Gansu and subordinate to the Jingyuan Mining Bureau, has been completed, and gallery operations are now being carried out. Underground work for this mine shaft project began in 1975. After a few setbacks, construction was resumed this year. The run length of the coal field is 9.4 kilometers and the incline width is 2.5 kilometers. The coal field covers an area of 23.5 square kilometers. There are three coal seams. The first seam averages 10 meters in thickness. The coal reserves are estimated at 320 million metric tons and the designed annual output is 1.5 million metric tons, comparable to the planned 1982 output of six coal mines under the Jingyuan Mining Bureau.

Source: Lanzhou GANSU RIBAO in Chinese 1 Jun 82 p 2

Item: Dalong Mine  
[2192 7127 4349]

Location: Liaoning, PRC

Data: A set of imported mechanized coal mining equipment was installed and put into operation at this mine, subordinate to the Tiefu Mining Administrative Bureau, at the end of April. Its maximum daily output capacity is 800 metric tons. By 26 May, this piece of equipment has produced 9,800 metric tons of raw coal.

Source: Shenyang LIAONING RIBAO in Chinese 27 May 82 p 1

Item: Xiaonan Coal Mine  
[2556 0589 3561 4349]

Location: Liaoning Province, PRC

Data: Since the beginning of 1982, Coal Extraction Team No 652 of this mine, subordinate to the Tiefu Mining Administrative Bureau, has been steadily increasing its output. By 28 May, its raw coal output has reached 68,399 metric tons, fulfilling the 1981 output plan 7 months and 3 days ahead of schedule.

Source: Shenyang LIAONING RIBAO in Chinese 2 Jun 82 p 1

Item: Wanghua Qu Coal Mine  
[2593 5363 0575 3561 4349]

Location: Wanghua Qu, Liaoning, PRC

Data: Construction on this project with an annual coal output capacity of 60,000 metric tons began on 4 June 1982. Located on the brink of a large mine, the main body of this mine has a reserve of 1.17 million metric tons. Total investment of this project is 3.17 million yuan. It is expected to go into operation in 1983.

Source: Shenyang LIAONING RIBAO in Chinese 6 Jun 82 p 1

Item: Benxi Mining Administrative Bureau  
[2609 3005 4349 0523 1444]

Location: Benxi, Liaoning, PRC

Data: As of 10 June, this bureau has prefulfilled its semi-annual output plan, exceeding the coal output quota by 62,800 metric tons, tunneling footage plan by 1,500 meters, and the coal dressing quota by 66,000 metric tons.

Source: Shenyang LIAONING RIBAO in Chinese 12 Jun 82 p 1

Item: Shuangyashan Coal-dressing Plant  
[7175 7700 1472 3156 0617]

Location: Heilongjiang, PRC

Data: In the past 3 years, this plant, under the Shuangyashan Mining Administrative Bureau, has implemented 133 technical innovations, vastly improved its coal-dressing techniques, and reduced the number of machinery and equipment from 441 to 246 pieces. As a result, its annual coal-dressing capacity has risen from 900,000 to 1.05 million metric tons. During the first 6 months of this year, this plant dressed 517,000 metric tons of coal and turned over to the state 4.43 million yuan in profits.

Source: Harbin HEILONGJIANG RIBAO in Chinese 19 Jul 82 p 2

Item: Donghai Coal Mine  
[2639 3189 3561 4349]

Location: Heilongjiang Province, PRC

Data: Subordinate to the Jixi Mining Administrative Bureau, this mine has commended more than 3,000 employees and workers for outstanding work performances. During the first 5 months of 1982, the mine produced 250,000 metric tons of raw coal more than the comparable period of 1981. It also realized 1.95 million yuan in profits during the same period.

Source: Harbin HEILONGJIANG RIBAO in Chinese 5 Jul 82 p 1

Item: Datun Coal Mine  
[2192 1470 3561 4349]

Location: Shanghai, PRC

Data: This mine's May 1982 coal output was 194,000 metric tons, a 21-percent increase over the comparable period of 1981, thereby making up for the poor output performance during the first quarter of this year.

Source: Shanghai JIEFANG RIBAO in Chinese 5 Jun 82 p 1

Item: Hanzhong Prefecture Coal Mine  
[3352 0022 0966 0575 3561 4349]

Location: Shaanxi, PRC

Data: During the first 3 months of 1982, this mine failed to fulfill its monthly output quotas due to flood damages and geological changes. As of the end of March this year, the mine's production was 2,800 metric tons short of the quotas and operated at a loss of 56,000 yuan. Because of effective measures adopted by the leadership of the mine to raise output, raise the utilization rate of working hours, and cut down the consumption of materials, its daily coal output rose from 331 metric tons in March to 508 metric tons in April and to 551 metric tons in May. The mine realized a profit of 32,000 yuan.

Source: Xi'an SHAANXI RIBAO in Chinese 12 Jun 82 p 2

Item: Tongchuan Mining Administrative Bureau  
[6894 1557 4349 0523 1444]

Location: Tongchuan, Shaanxi, PRC

Data: Miners here in May set a new monthly coal extraction record of 620,000 metric tons and a new tunneling record of 15,685 meters.

Source: Xi'an SHAANXI RIBAO in Chinese 12 Jun 82 p 1

Item: Liudaowan Coal Mine  
[0362 6670 3494 3561 4349]

Location: Urumqi, Xinjiang, PRC

Data: The mine employs 1,400 employees and workers from 10 different national minorities, including Uighur, Han, Hui, Kazakh, Manchu, Puyi, Russian, Tartar, Tajik, and Uzbek nationalities. Half of the mine's party Standing Committee members are national minorities. Employees and workers of all nationalities at the mine respect each other and work together harmoniously, making it possible for the mine to fulfill its production quotas since 1977.

Source: Beijing RENMIN RIBAO in Chinese 28 May 82 p 2

Item: Qinghe Power Plant  
[3237 3109 7193 0617]

Location: Liaoning Province, PRC

Data: As of 30 June, this plant, China's largest thermal power plant, generated 3,825,310,000 kilowatt hours of electricity, exceeding the planned target by 39.91 million kilowatt hours and 941.53 million kilowatt hours more than the comparable 1981 period.

Source: Shenyang LIAONING RIBAO in Chinese 3 Jul 82 p 1

Item: Qinghe Power Plant  
[3237 3109 7193 4541]

Location: Liaoning Province, PRC

Data: The fourth stage of this plant's expansion project was officially started on 1 August. This stage of the project calls for the installation of another 200,000-KW generating unit with a daily power output of 4 million kilowatt hours.

Source: Shenyang LIAONING RIBAO in Chinese 3 Aug 82 p 1

Item: (Baishan) Hydroelectric Power Station  
[(4101 1472 3055 7193 4541)]

Location: Jilin Province, PRC

Data: A large set of gold extracting equipment at the sandstone storage yard at a worksite of this station, the largest hydropower project in Northeast China, went into operation on 8 May. As of now 2,000 grams of gold have been produced.

Source: Changchun Jilin Provincial Service in Mandarin 1100 GMT 8 Jul 82 SK

Item: Jiamusi-Shuangyashan Transformer Project  
[0163 2606 2448 7175 7700 1472 6239 7193 1562 4453]

Location: Heilongjiang Province, PRC

Data: After 3 years of construction work, this project was put into operation on 6 June 1982. It includes a 60-kilometer 220,000-volt transmission line and a "one-time" transformer station with a total capacity of 90,000 KVA and is the second largest transformer project in Hejiang Prefecture.

Source: Harbin HEILONGJIANG RIBAO in Chinese 6 Jun 82 p 1

Item: Daqing Ethylene Plant  
[2192 1987 0044 7910 0617]

Location: Daqing, Heilongjiang, PRC

Data: Work on a new ethylene plant with an annual capacity of 300,000 metric tons is going full steam ahead at Daqing, China's leading oilfield, in the northeast. The plant will have 13 sets of technological production installations and 72 auxiliary installations and utilities. Construction has started on nearly half of them. Part of the plant's installations will be imported from Japan, West Germany and Britain. It is one of the major projects on which construction was once suspended owing to economic readjustment. The plant will use light hydrocarbon recovered from natural gas and crude oil as raw material. When fully completed, it will be able to provide 587,600 metric tons of raw materials annually for making organic chemicals, plastics and chemical fibers.

Source: Beijing XINHUA in English 0709 GMT 15 Aug 82 OW

Item: Lanzhou Oil Refinery  
[5695 1558 3550 3111 0617]

Location: Lanzhou, Gansu, PRC

Data: Despite poor sales of some of its principal products and lower output, this refinery realized a profit of 86.69 million yuan for the January-May 1982 period, a 2.95-percent increase over the comparable period of 1981. It turned over to the state 76 million yuan as profits. Energy conservation has played an important part in its successful and profitable operations. During the January-May 1982 period, the plant's electric power consumption per metric ton of crude oil processed dropped 8 kilowatt hours from the same period in 1981; its steam consumption per metric ton of crude oil processed fell 0.16 metric ton and its energy consumption per 100 yuan of output value dropped 7.09 million kilocalories from the like 1981 period.

Source: Lanzhou GANSU RIBAO in Chinese 28 Jun 82 p 1

VI. MACHINE-BUILDING INDUSTRY

Item: Dalian Diesel Engine Plant  
[2192 6647 2693 1444 2623 0617]

Location: Dalian, Liaoning, PRC

Data: This plant has successfully trial produced a diesel engine for automobiles, which consumes 35 percent less fuel than a gasoline engine. This type of diesel engine can be used interchangeably with the Liberation brand gasoline engine. Equipped with this diesel engine, each motor vehicle can save 5,000 yuan in fuel cost annually. Fifty-three customers have signed contracts with this plant for 1,926 diesel engines.

Source: Shenyang LIAONING RIBAO in Chinese 15 Jun 82 p 2

Item: Dalian Heavy Machinery Plant  
[2192 6647 6850 0992 2623 2750 0617]

Location: Dalian, Liaoning, PRC

Data: Two sets of up-to-date steel casting machines, called billet continuous casters, have been produced by this plant, according to a plant spokesman. Production of the machine, manufactured with the assistance of Mannesmann-Demag of the Federal Republic of Germany, will ensure China's metallurgical industry of a steady supply of modern continuous casting equipment, the spokesman said. The new caster will raise productivity 30 percent, the spokesman said, and billet yield 15 percent. Quality will improve, and 0.6 metric tons of coal will be saved from making each ton of billet. Between July 1981 and July 1982, as the plant technicians worked with Mannesmann-Demag, two sets of the casters were produced, and a third is now in process.

Source: Beijing XINHUA in English 0702 GMT 14 Aug 82 OW

Item: Jinzhou Heavy-Duty Machinery Plant  
[6930 1558 6850 0992 2623 2750 0617]

Location: Jinzhou, Liaoning, PRC

Data: Four 8-ton hydraulic crane trucks purchased from this plant by the Communications Department of the Xizang Autonomous Region were driven to Lhasa in early April. These trucks traveled over 5,000 kilometers from the shores of Bohai Gulf to Lhasa.

Source: Shenyang LIAONING RIBAO in Chinese 24 May 82 p 1

Item: Shenyang Elevator Plant  
[3088 7122 7193 2748 0617]

Location: Shenyang, Liaoning, PRC

Data: China's first 1 meter/second speed regulating passenger elevator built by this plant has passed an appraisal test held in Dalian between 1 and 4 March. When it has to be stopped, the elevator can gradually reduce speed until it stops. It is more stable than the two-speed elevator that controls its speed by stages.

Source: Shenyang LIAONING RIBAO in Chinese 3 Apr 82 p 2

Item: Tieling Machinery Repair Plant  
[6993 1545 2623 0208 0617]

Location: Tieling, Liaoning, PRC

Data: Subordinate to the Dongbei (Northeast) Oil Transportation Administrative Bureau, this plant had been operating at a loss of 17 million yuan during the 8 years since its establishment due to the poor quality of its products--tube-type oil pumps. Starting this year, the plant has taken positive measures to upgrade its product quality and has won praise from its customers. Six oilfields, including Daqing and Liaohe, have placed orders for 1,459 tube-type oil pumps, valued at more than 3 million yuan.

Source: Shenyang LIAONING RIBAO in Chinese 21 Jul 82 p 1

Item: Jixi Special Coal Mining Equipment Plant  
[7179 6007 3561 4349 1413 3938 6080 0271 0617]

Location: Heilongjiang, PRC

Data: Engineers and technicians have succeeded in building an MAZ-200 coal mine drilling machine that helps to open a market for this plant's products. Contracts amounting to 740,000 yuan have been signed. Since the beginning of 1980, the plant has produced 72 of the drilling machines.

Source: Harbin HEILONGJIANG RIBAO in Chinese 27 May 82 p 1

Item: Hanzhong Transformer Plant  
[3352 0022 6239 1090 0892 0617]

Location: Hanzhong, Shaanxi, PRC

Data: In cooperation with the 7th Design Institute of the First Ministry of Machine-Building Industry, this plant has successfully built China's first two-stage vacuum oil purifying machine. Since the plant put the machine into mass production in 1981, it has saved the state 1.2 million U.S. dollars in foreign exchange. In the past, one such imported machine cost US\$200,000.

Source: Beijing GONGREN RIBAO in Chinese 20 Apr 82 p 1

VII. MISCELLANEOUS INDUSTRIES

Item: Shanghai Light Bulb Plant  
[0006 3189 3597 3133 0617]

Location: Shanghai, PRC

Data: Since China's largest black and white television picture tube production line was installed here 1 year ago, this plant has turned out nearly 1 million 12- and 14-inch picture tubes, enabling it to pay back all the loans from the state and making it unnecessary for Shanghai to import black and white television picture tubes. The production line was imported from Japan and was put into operation in June 1981. It is capable of making four picture tubes per minute.

Source: Shanghai WEN HUI BAO in Chinese 17 Jul 82 p 1

Item: Xinjiang Bicycle Plant  
[2450 3984 5261 5887 6508 0617]

Location: Urumqi, Xinjiang, PRC

Data: With the help of the Shanghai Bicycle Corporation, this plant has successfully trial manufactured in only 11 months 800 Ostrich brand bicycles and has been given permission to mass produce these bicycles. The plant's current mechanical processing capacity is 150,000 bicycles and its electroplating and paint-baking capacity is 60,000 bicycles. The Ostrich brand bicycle incorporates the outstanding features of the Phoenix, Golden Lion and Flying Pigeon brand bicycles.

Source: Shanghai WEN HUI BAO in Chinese 27 Jul 82 p 1

Item: Yongan Plastics Plant No 1  
[3057 1344 1043 2436 1708 0617]

Location: Yongan County, Fujian, PRC

Data: This plant has been adopting effective measures to conserve energy. Last year, it conserved 600 metric tons of coal and 92,000 kilowatt hours of electricity. With the installation of six additional hydraulic presses, it produces an additional 4 million pairs of slippers a year. In 1981 the plant turned out a total of 7.72 million pairs of slippers and realized 1 million yuan in profits, registering increases of 85.93, 86.41 and 96 percent respectively over 1980. Its 1981 export volume also showed an increase of 159.28 percent over 1980.

Source: Fuzhou FUJIAN WUZI in Chinese 10 Feb 82 p 4

Item: Jiamusi Brick Plant No 4  
[0163 2606 2448 4574 0934 4331 0617]

Location: Jiamusi, Heilongjiang, PRC

Data: This newly built plant was officially put into operation in May 1982. Its monthly output is 150,000 red bricks. This project was financed by construction units of the Jiamusi City Building Materials Bureau. The red bricks made by this plant will be supplied on a priority basis to the units that financed this project to pay for the construction funds.

Source: Harbin HEILONGJIANG RIBAO in Chinese 7 Jun 82 p 1

Item: Zhaoyuan Glass Plant  
[5128 3293 3788 3863 0617]

Location: Zhaoyuan, Heilongjiang, PRC

Data: Following 2 months of readjustment, repairs and trial production operations, this plant was officially put into operation on 16 June 1982. Jointly operated by the Anyuan Glass Plant of Shanghai, this plant produces wine bottles and canning bottles. The two partners provided 10,000 yuan each to put the plant into operation.

Source: Harbin HEILONGJIANG RIBAO in Chinese 20 Jun 82 p 1

Item: Hailun Xian Dairy Products Plant  
[3189 0243 4905 0050 0756 0617]

Location: Hailun County, Heilongjiang, PRC

Data: This plant's second phase expansion project was recently put into operation, raising the daily milk processing capacity from 40 to 80 metric tons and surpassing the county's current dairy output capacity.

Source: Harbin HEILONGJIANG RIBAO in Chinese 7 Jul 82 p 1

Item: Yizheng Chemical Fiber Joint Company  
[0308 1767 0553 1331 4960 4850 5114 0678 0361 0674]

Location: Yizheng County, Jiangsu, PRC

Data: Construction of the first polyester plant for this company is now in full swing. After completion, the plant can produce enough chemical fibers to make 1.8 billion meters of synthetic fabric. The polyester plant was built by the China Trust and Investment Corporation here, utilizing foreign capital.

Source: Beijing XINHUA Domestic Service in Chinese 0045 GMT 5 Aug 82 OW

Item: Qianguo Soybean Protein Processing Plant  
[0467 6751 6258 5751 4101 6347 0502 1562 0617]

Location: Qianguo County, Jilin Province, PRC

Data: Qianguo County started building a modern soybean protein processing plant on 15 July. This plant is the first of its kind in China. It will be equipped with imported, Japanese-made equipment and processing technology, and will play an active role in Jilin's food processing industry and in increasing state revenue.

Source: Changchun Jilin Provincial Service in Mandarin 1100 GMT  
15 Jul 82 SK

VIII. PHOTOGRAPHS OF INDUSTRIAL FACILITIES

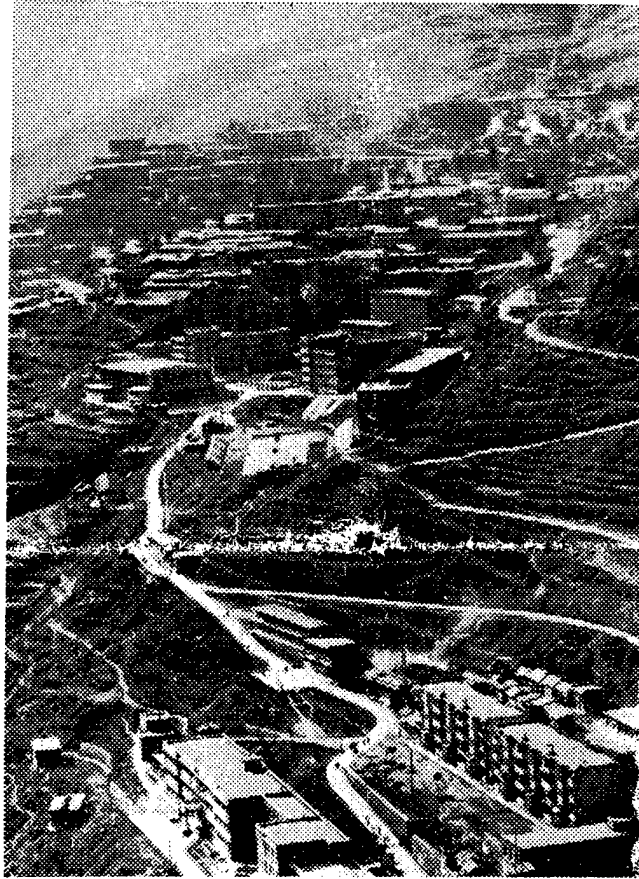


Fig. 1 View of the Dayao Copper Mine in Yunnan Province, which is still under construction .

[Source: Beijing RENMIN RIBAO in Chinese 29 Mar 82 p 1]

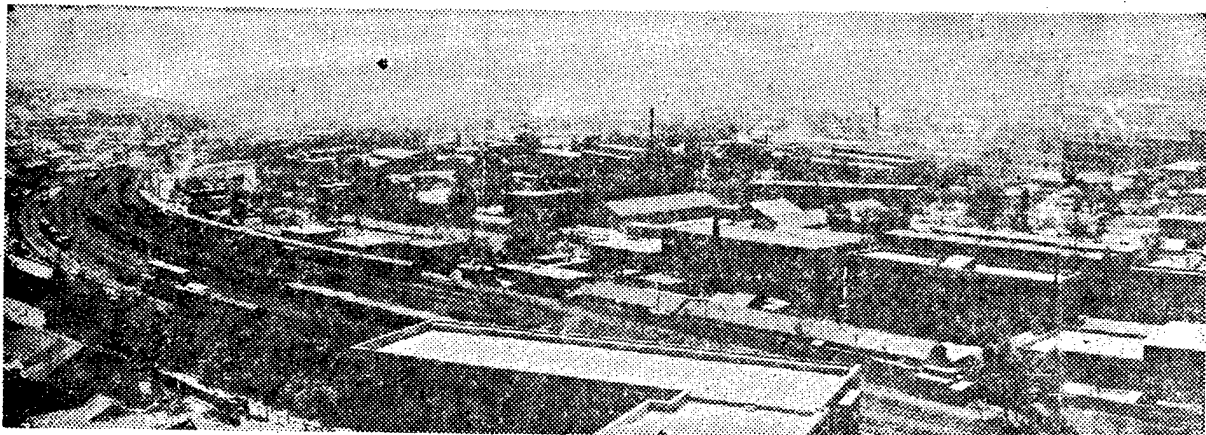


Fig. 2 Photograph of Tongchuan City, a major coal industrial base in Shaanxi Province

[Source: Xi'an SHAANXI RIBAO in Chinese 20 Jun 82 p 1]

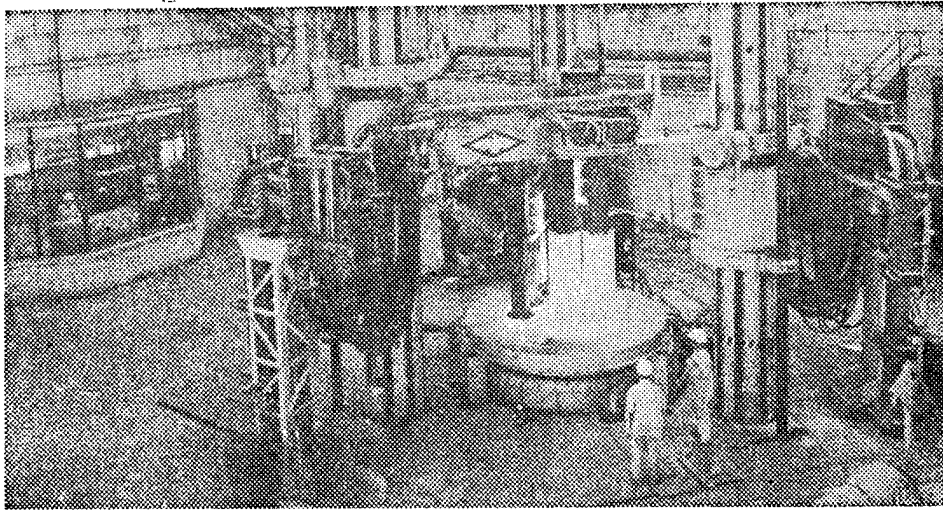


Fig. 3 World's largest electroslag remelting furnace is now in operation in Shanghai

[Source: Beijing GUANGMING RIBAO in Chinese 8 Aug 82 p 1]

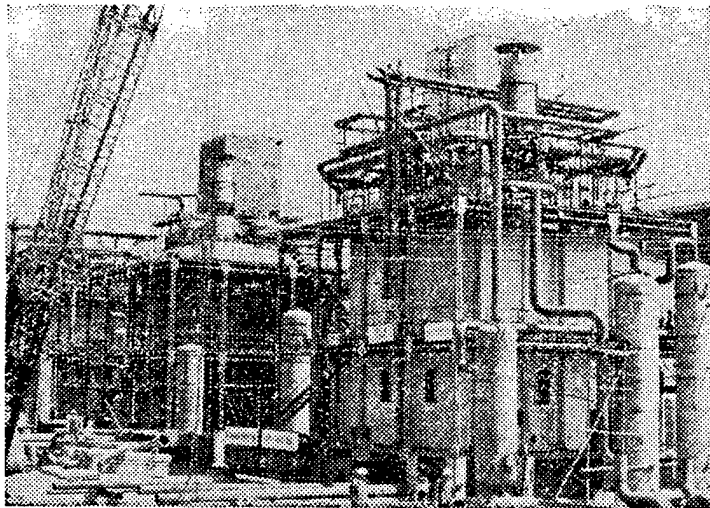


Fig. 4 The nearly completed oxygen-generating workshop of the Shenbei Coal Gasification Project in Shenyang City. The project is scheduled for completion in 1984.

[Source: Shenyang LIAONING RIBAO in Chinese 19 Jun 82 p 1]

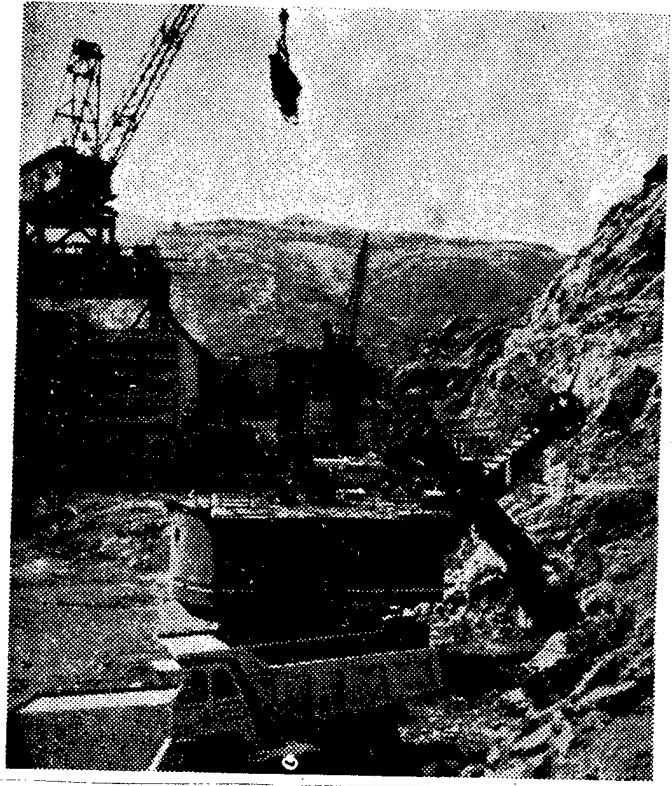


Fig. 5 Construction of the dam foundation project for the Huoshiyan Hydroelectric Power Station in Ankang along the Han River in Shaanxi is in full swing. The total installed capacity of this hydroelectric power project is 800,000 kilowatts. The power station is scheduled for completion in the 1980's

[Source: Beijing RENMIN RIBAO in Chinese 10 Jul 82 p 3]

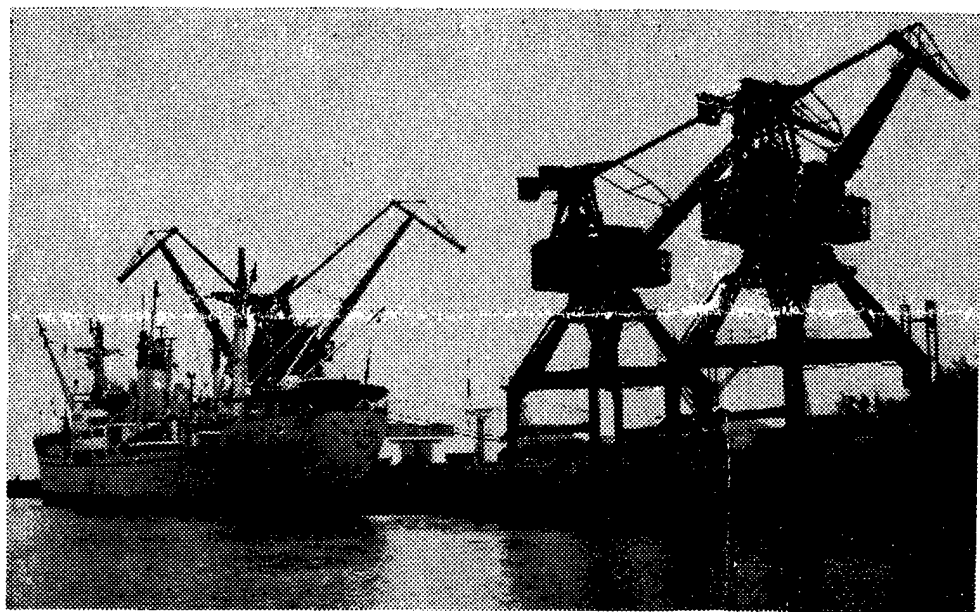


Fig. 6 Construction of the Fangcheng Port in Guangxi Province has been completed in the main. The port has an annual cargo tonnage capacity of 4 million metric tons. Seven 10,000-ton class deepwater berths have been completed so far.

[Source: Beijing RENMIN RIBAO in Chinese 28 Mar 82 p 1]

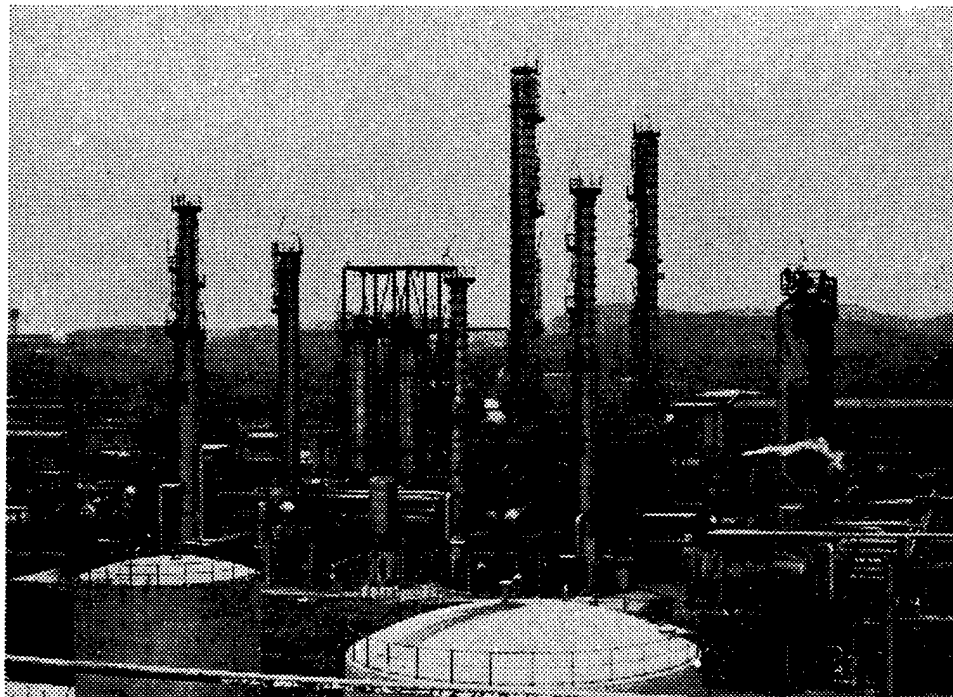


Fig. 7 The Nanjing Alkylbenzene Plant is now in operation.

[Source: Beijing RENMIN RIBAO in Chinese 8 Apr 82 p 1]

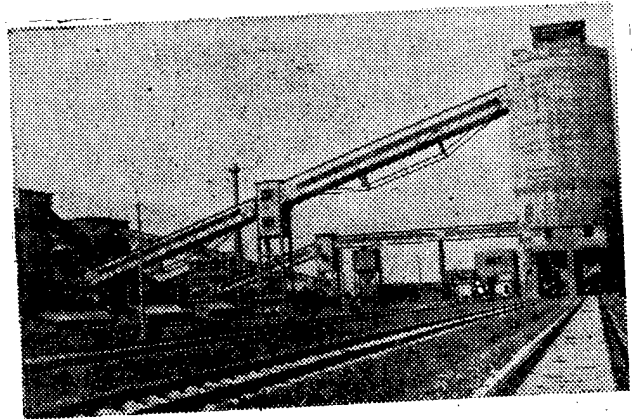


Fig. 8 A section of the coal-dressing plant in the Datun Coal Mining Zone. Located 70 kilometers north of Xuzhou, Jiangsu, this coal-dressing plant has an annual capacity of 1.8 million metric tons

[Source: Shanghai JIEFANG RIBAO in Chinese 8 Jul 82 p 3]

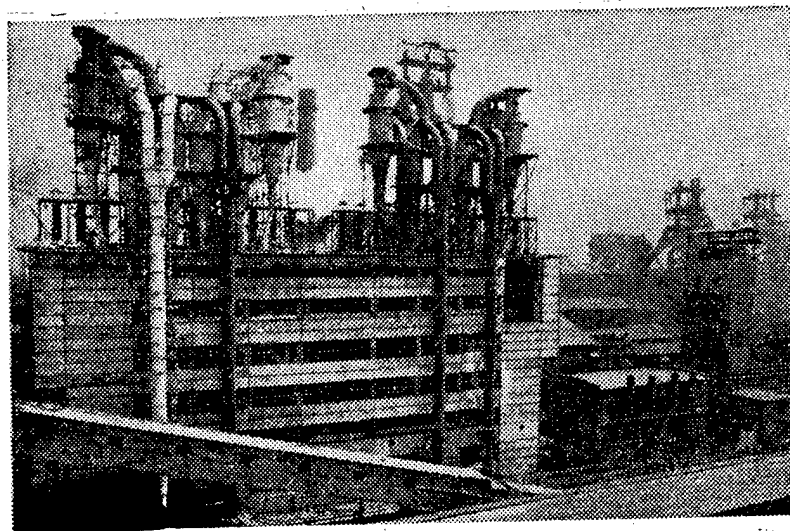


Fig. 9 Photograph of the powdered coal workshop of Anshan Iron and Steel Company's Iron Smelting Plant. The powdered anthracite processed by this workshop will help the company save 180,000 metric tons of heavy oil annually from iron smelting operation.

[Source: Shenyang LIAONING RIBAO in Chinese 18 Jul 82 p 1]

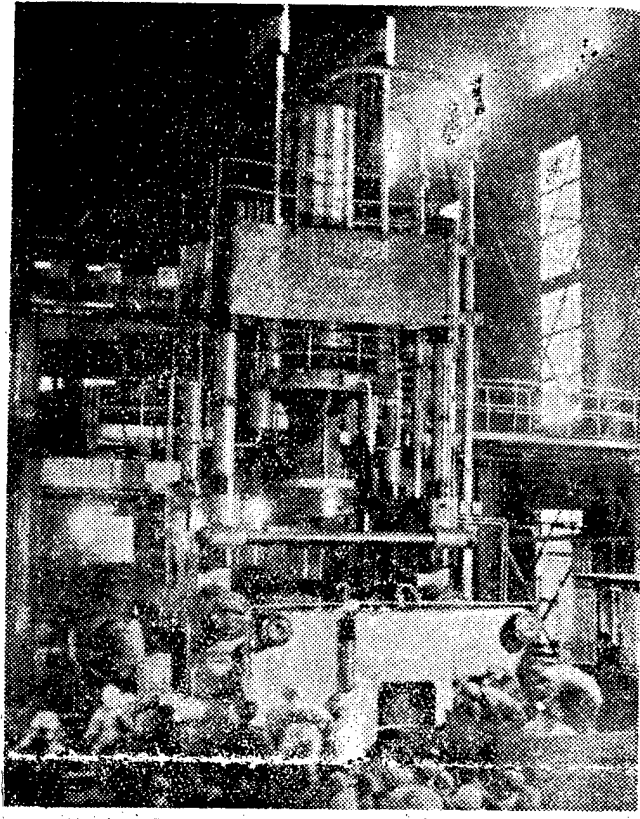


Fig. 10 China's first 5,000-ton vertical (crushing) type electrode extruding machine was recently installed and tested at the Lanzhou Carbon Plant

[Source: Lanzhou GANSU RIBAO in Chinese 5 Jun 82 p 1]

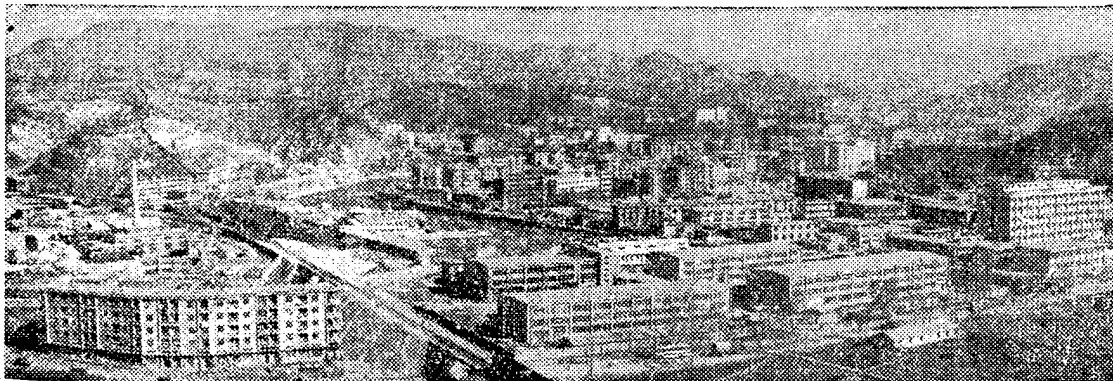


Fig. 11 Another view of the "automobile city" of Shiyan in Hubei

[Source: Beijing GONGREN RIBAO in Chinese 11 Jul 82 p 2]

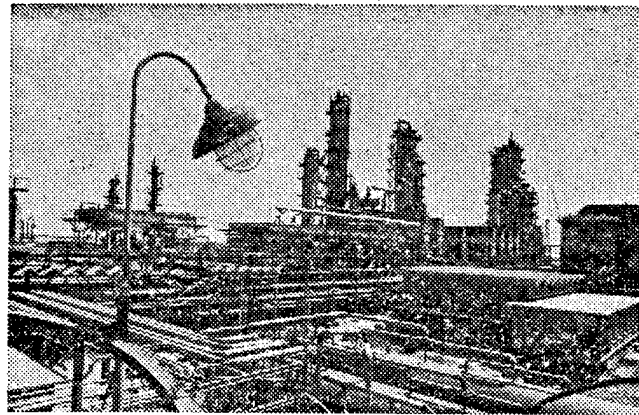


Fig. 12 View of the refining facility designed and built by Chinese engineers for the Shijiazhuang Oil Refinery. When completed, this facility is capable of refining 2.5 million metric tons of crude oil annually

[Source: Harbin HEILONGJIANG RIBAO in Chinese 24 Jun 82 p 4]

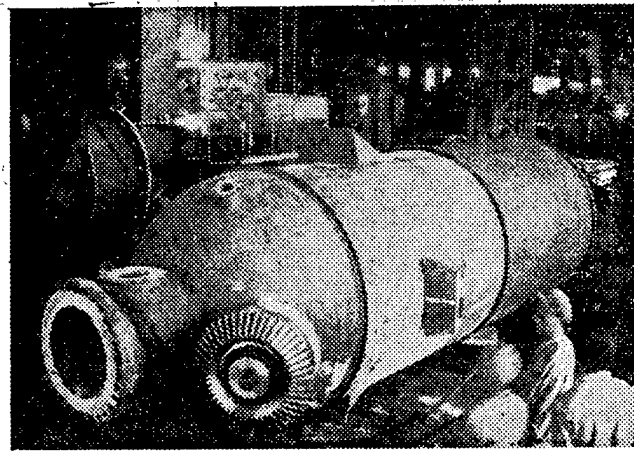


Fig. 13 China's first pressurized gasification furnace was built in Dalian. The main section of the furnace will be delivered to the Changchun Motor Vehicle Plant No 1. With an inside diameter of 1.8 meters and using low-grade coal as raw material, the furnace can produce more than 80,000 standard cubic meters of coal gas daily

[Source: Kunming YUNNAN RIBAO in Chinese 19 Jul 82 p 3]

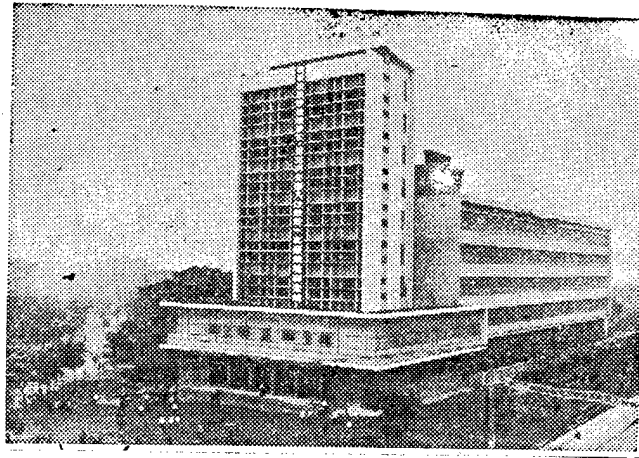


Fig. 14 Photo of the Chongqing Long-Distance Telephone Building. Serving Southwest China, this building covers 11,000 square meters of floor space

[Source: Harbin HEILONGJIANG RIBAO in Chinese 22 Jul 82 p 4]

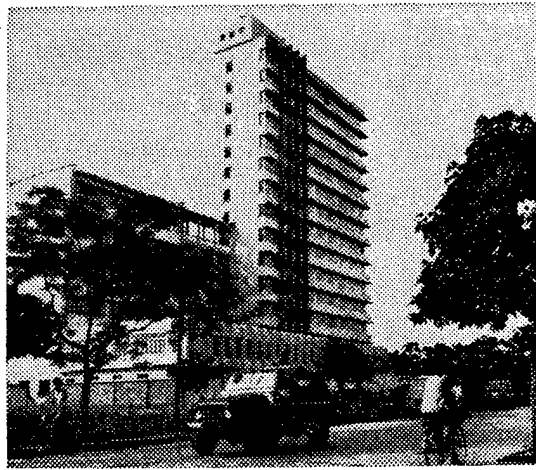


Fig. 15 The distribution microwave building of Guangxi's electric power center in Nanning was recently completed.

[Source: Shanghai JIEFANG RIBAO in Chinese 28 Jun 82 p 1]

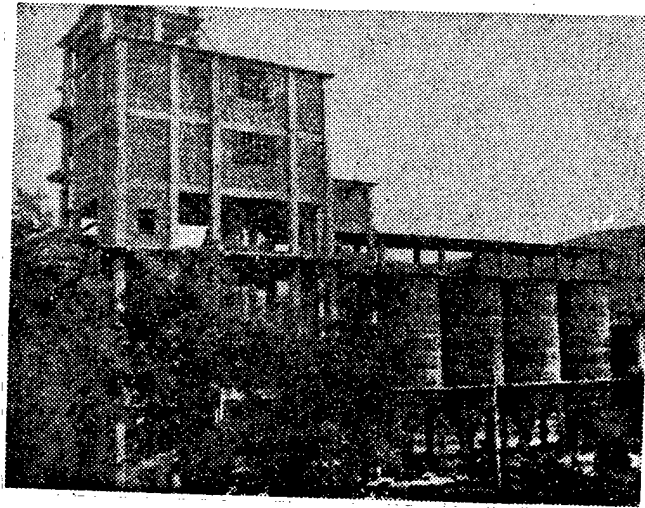


Fig. 16 A section of the recently built Xishuangbanna Diazu Autonomous Zhou Cement Plant in Yunnan Province. The factory has an annual cement output capacity of 20,000 metric tons.

[Source: Kunming YUNNAN RIBAO in Chinese 10 Jun 82 p 1]



Fig. 17 Steel rolling equipment of the Tangshan Metallurgical Mining Machinery Plant in Hebei

[Source: Beijing QIZHONG YUNSHU JIXIE [HOISTS AND CONVEYANCES] in Chinese No 6, 1982, inside frontcover]

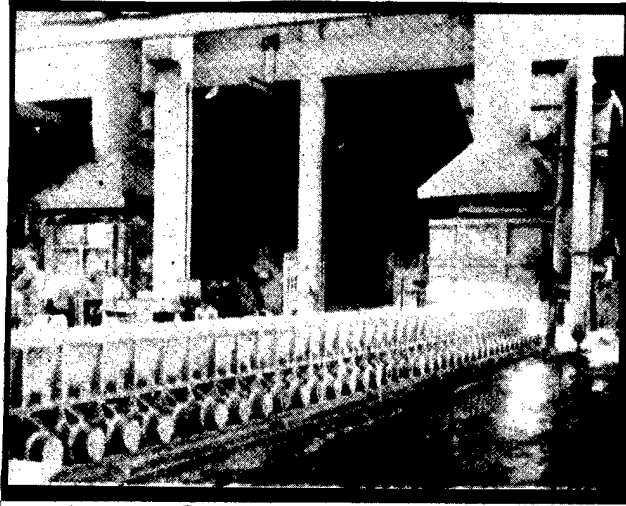


Fig. 18 A piece of sintering equipment at the Tangshan Metallurgical Mining Machinery Plant in Hebei

[Source: Beijing QIZHONG YUNSHU JIXIE [HOISTS AND CONVEYANCES] in Chinese No 6, 1982, inside frontcover]



Fig. 19 Inside view of the Fushun Excavator Plant, the largest of its kind in China today  
[Source: Tianjin GONGCHENG JIXIE [CONSTRUCTION MACHINERY AND EQUIPMENT] in Chinese No 2, 1982  
between pages 32 and 33]

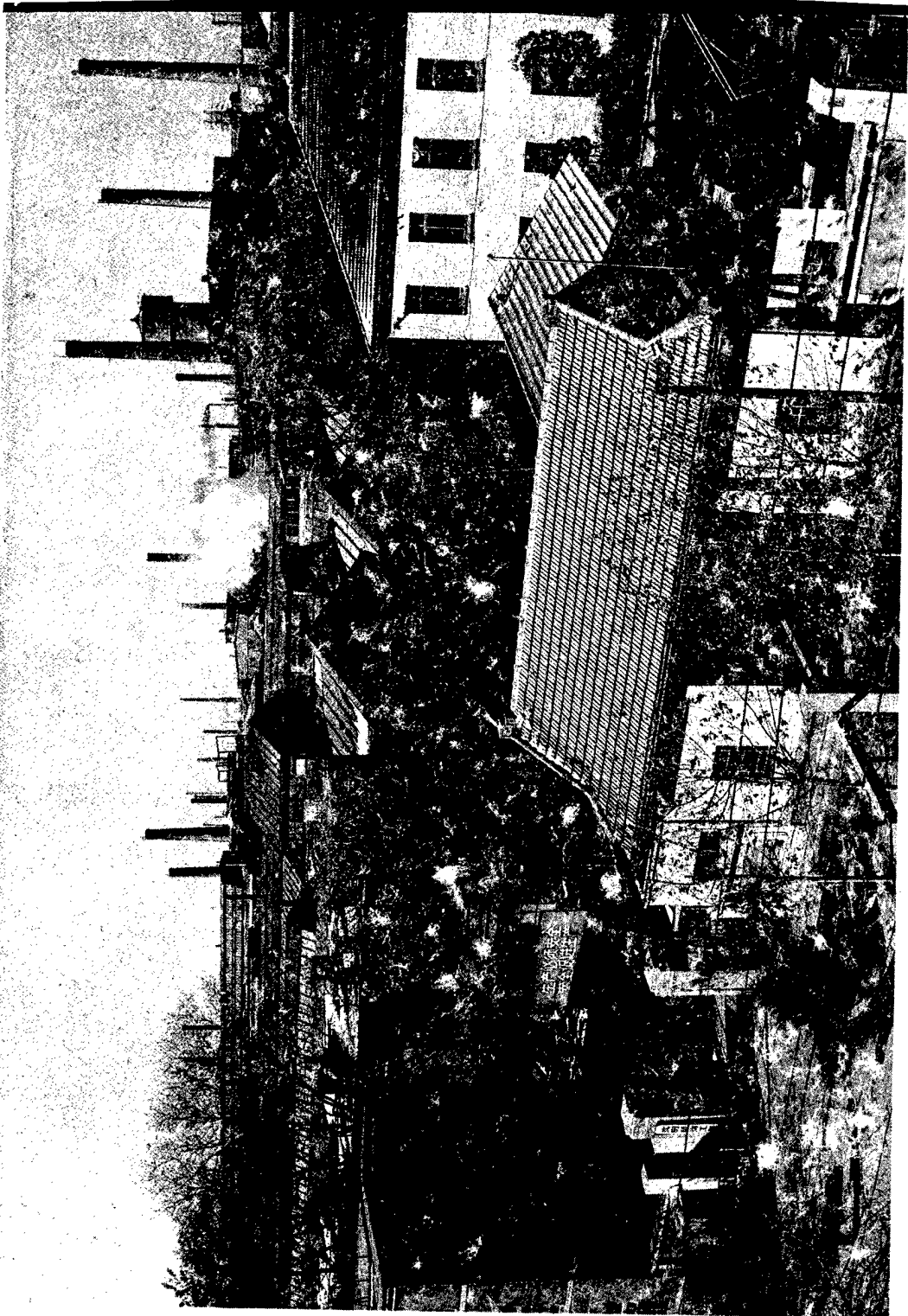


Fig. 20 Bird's eye view of the Shenyang Pneumatic Tools Plant

[Source: Luoyang KUANGSHAN JIXIE [MINING MACHINERY] in Chinese No 2, 1982, backcover]

# 上海原材料生产的重要基地 梅山炼铁基地一期工程昨日正式验收

近四年来，基地已向国家上缴税利一亿六千万元

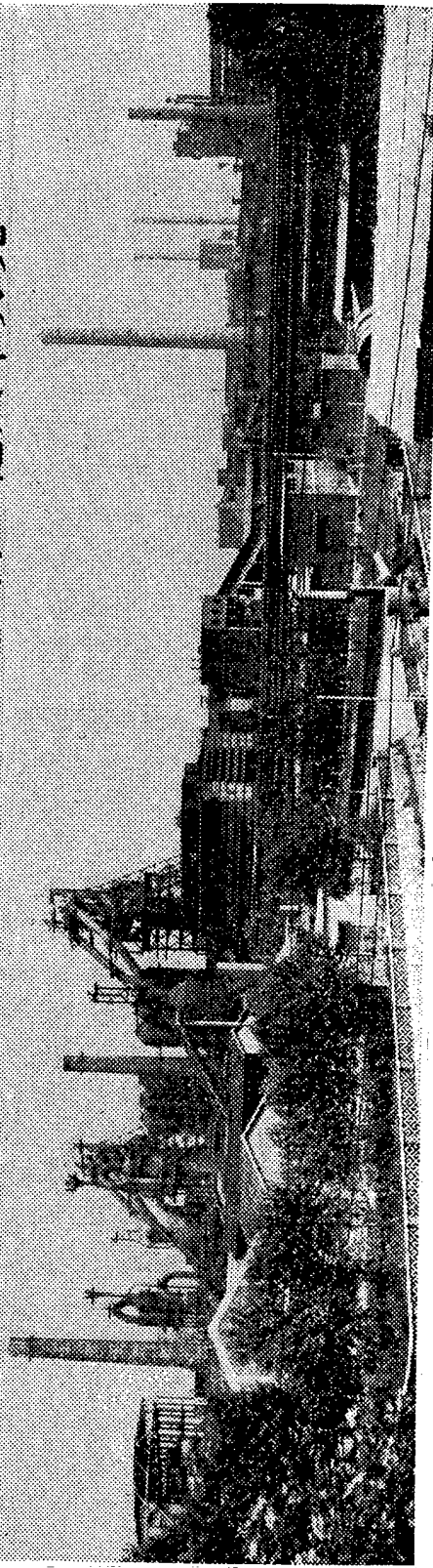


Fig. 21 The first stage of the Meishan Iron Smelting Base, an important raw material base for Shanghai, was formally commissioned and turned over for production 27 June 1982. The Meishan Iron Smelting Base currently employs more than 21,000 employees and workers

[Source: Shanghai JIEFANG RIBAO in Chinese 27 Jun 82 p 1]

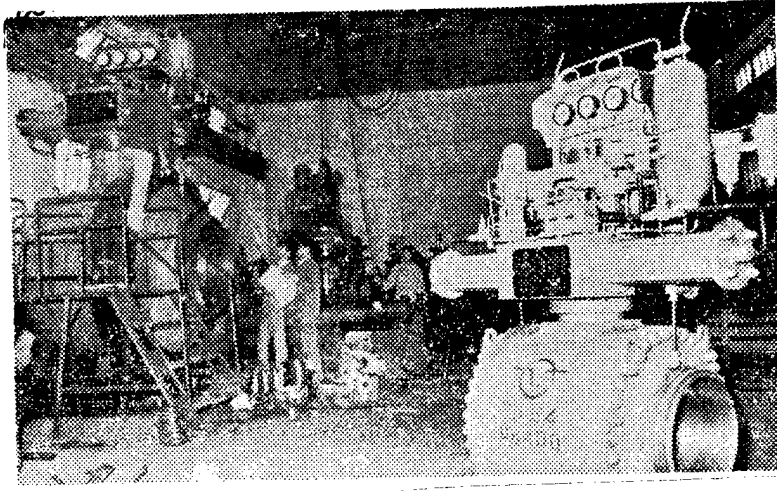


Fig. 22 A new product--ball safety valve--designed and built by the Zigong High Pressure Valve Plant in Sichuan. In the past 2 years, this new product has been installed on seven trunk and branch oil and gas pipelines in the country.

[Source: Chengdu SICHUAN RIBAO in Chinese 25 Jun 82 p 2]

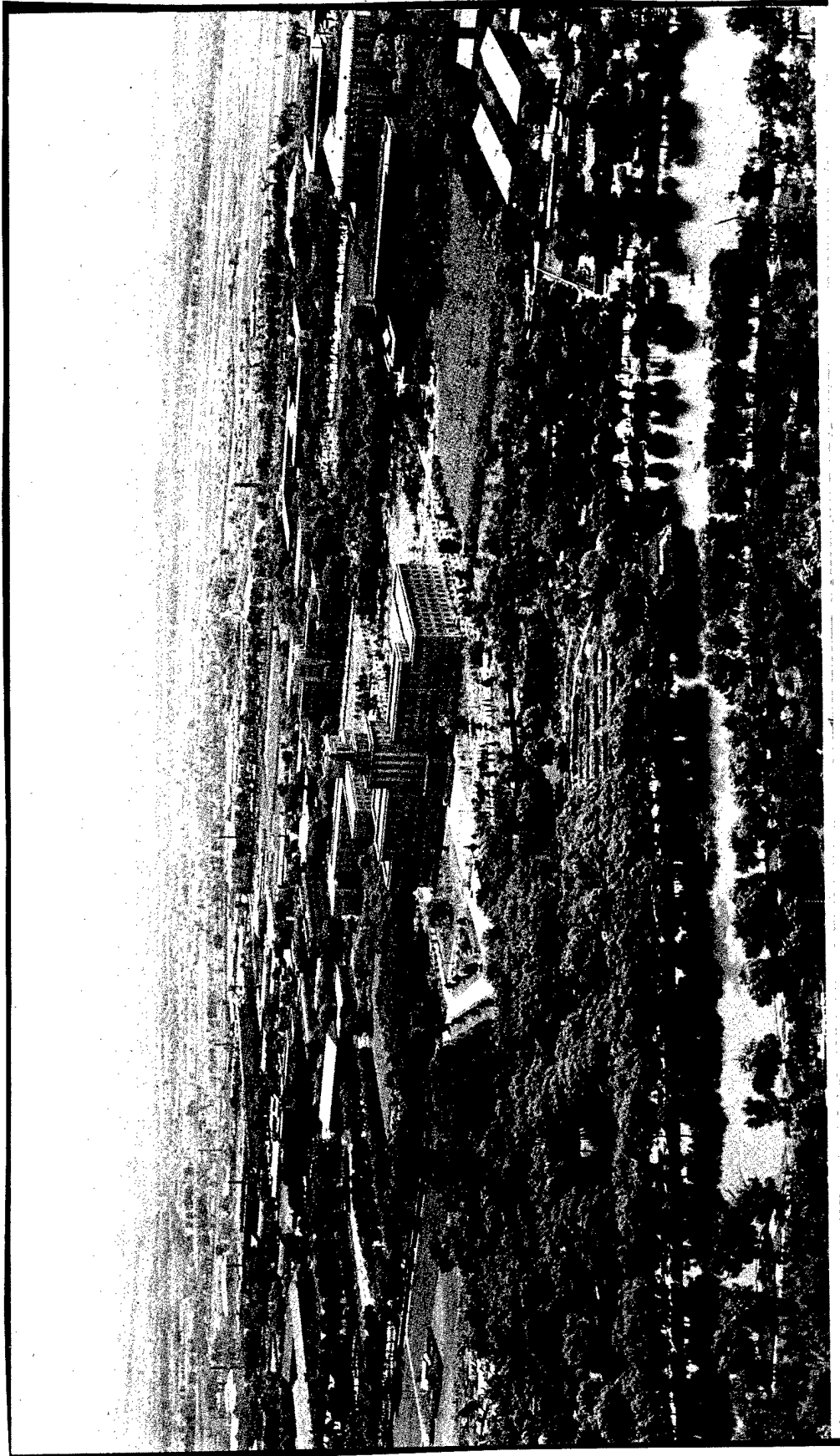


Fig. 23 A view of the Northeast Institute of Technology  
[Source: Shenyang DONGBEI GONGXUEYUAN XUEBAO [JOURNAL OF NORTHEAST INSTITUTE OF TECHNOLOGY]  
in Chinese No 2, 1982]

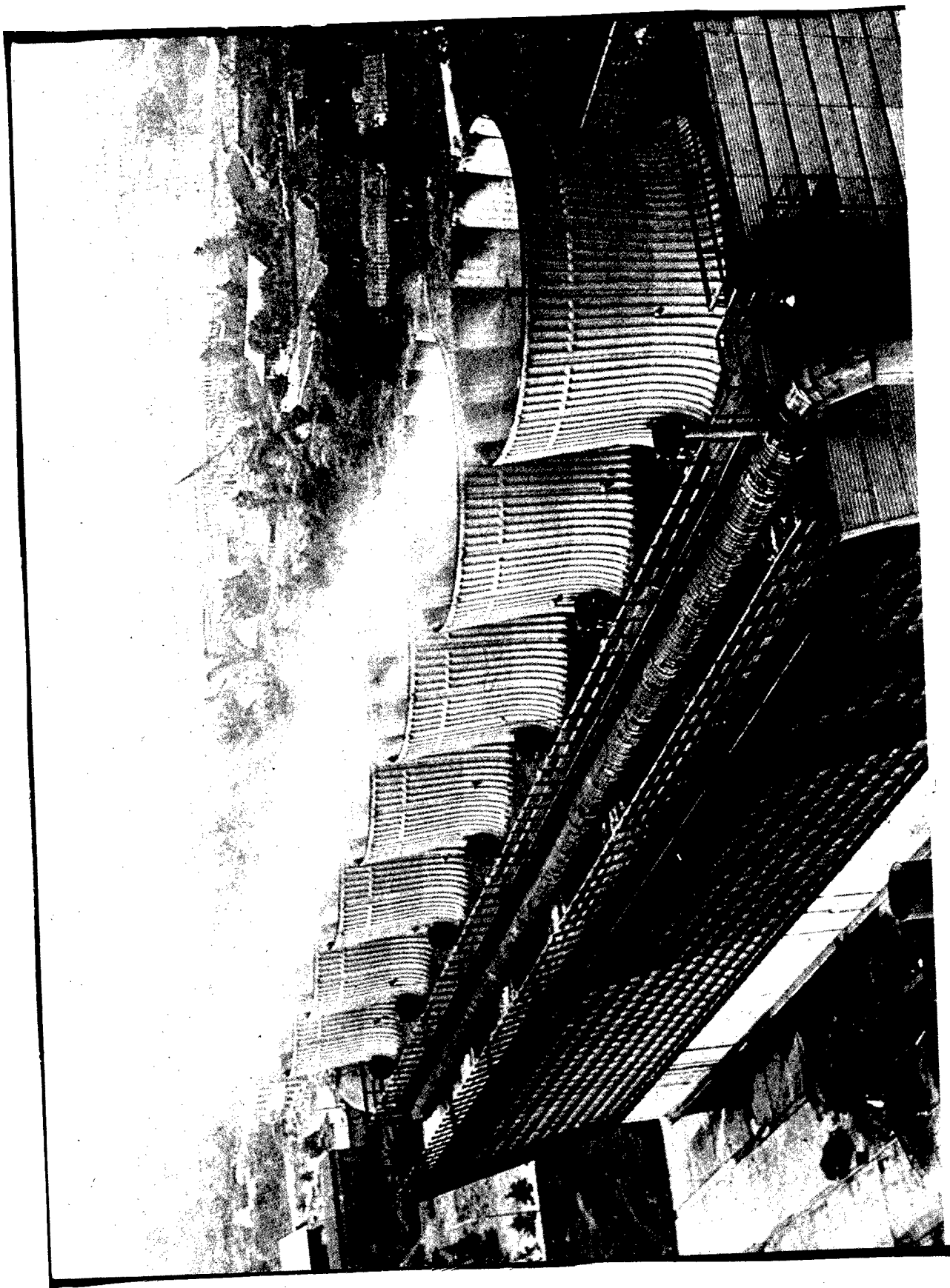


Fig. 24 Cooling water tower of the Yunnan Natural Gas Chemicals Plant  
[Source: Kunming YUNNAN HUABAO [YUNNAN PICTORIAL] in Chinese No 3, 1980, inside front cover]

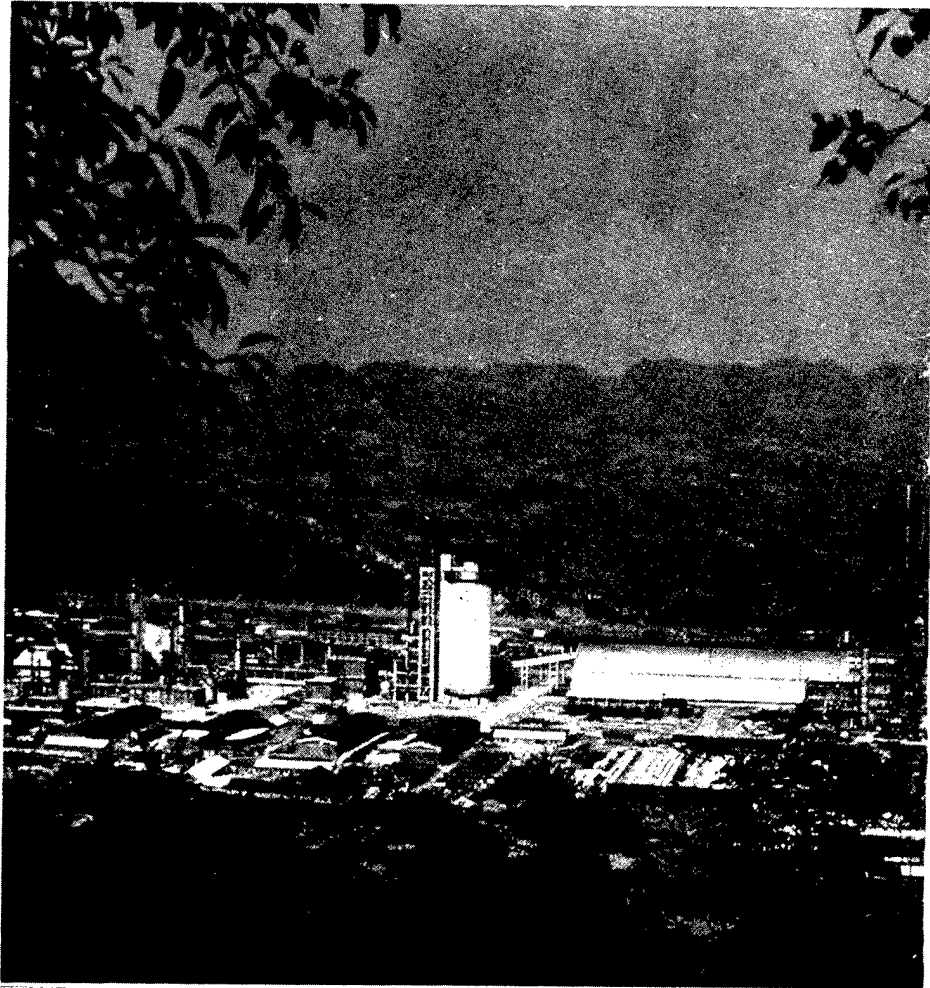


Fig. 25 Gasification Plant of the Yunnan Natural Gas Chemicals Plant

[Source: Kunming YUNNAN HUABAO [YUNNAN PICTORIAL] in Chinese No 3, 1980,  
inside front cover]

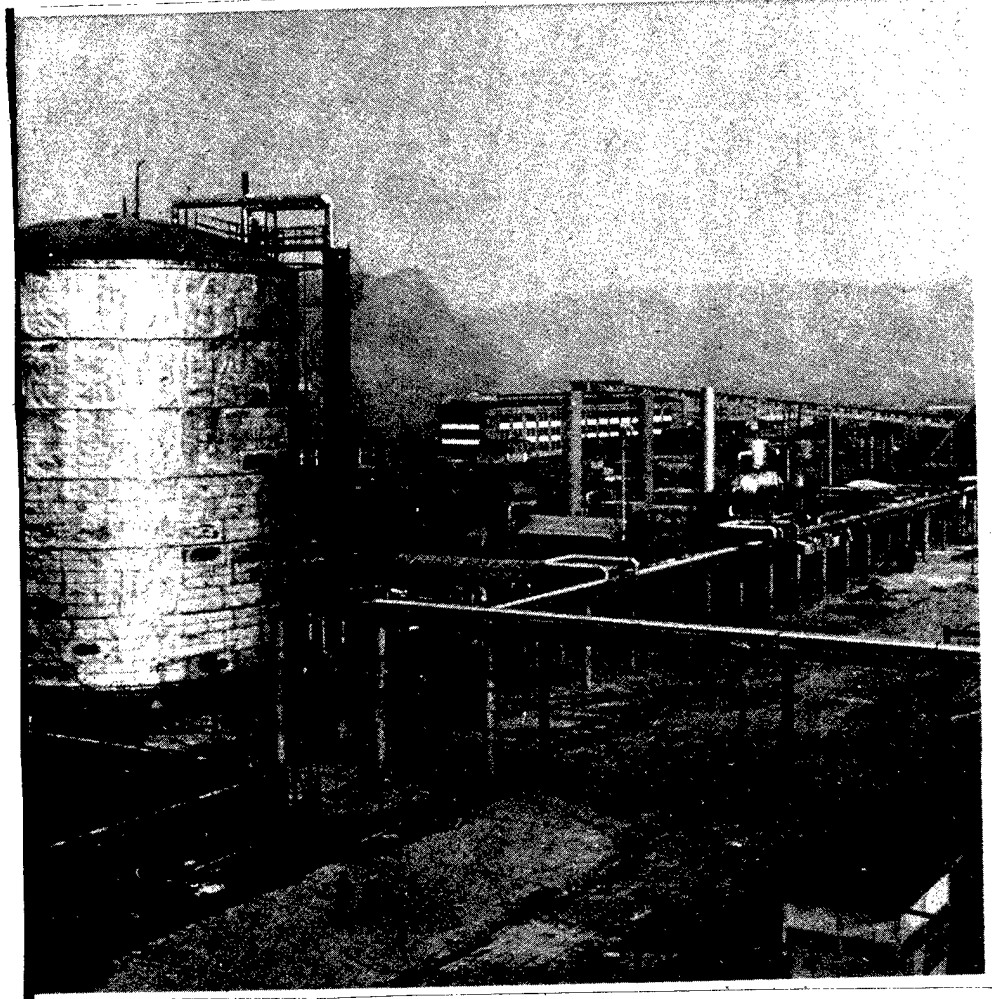


Fig. 26 Liquid ammonia storage tank and steam generator of the Yunnan Natural Gas Chemicals Plant

[Source: Kunming YUNNAN HUABAO [YUNNAN PICTORIAL] in Chinese No 3, 1980, inside front cover]

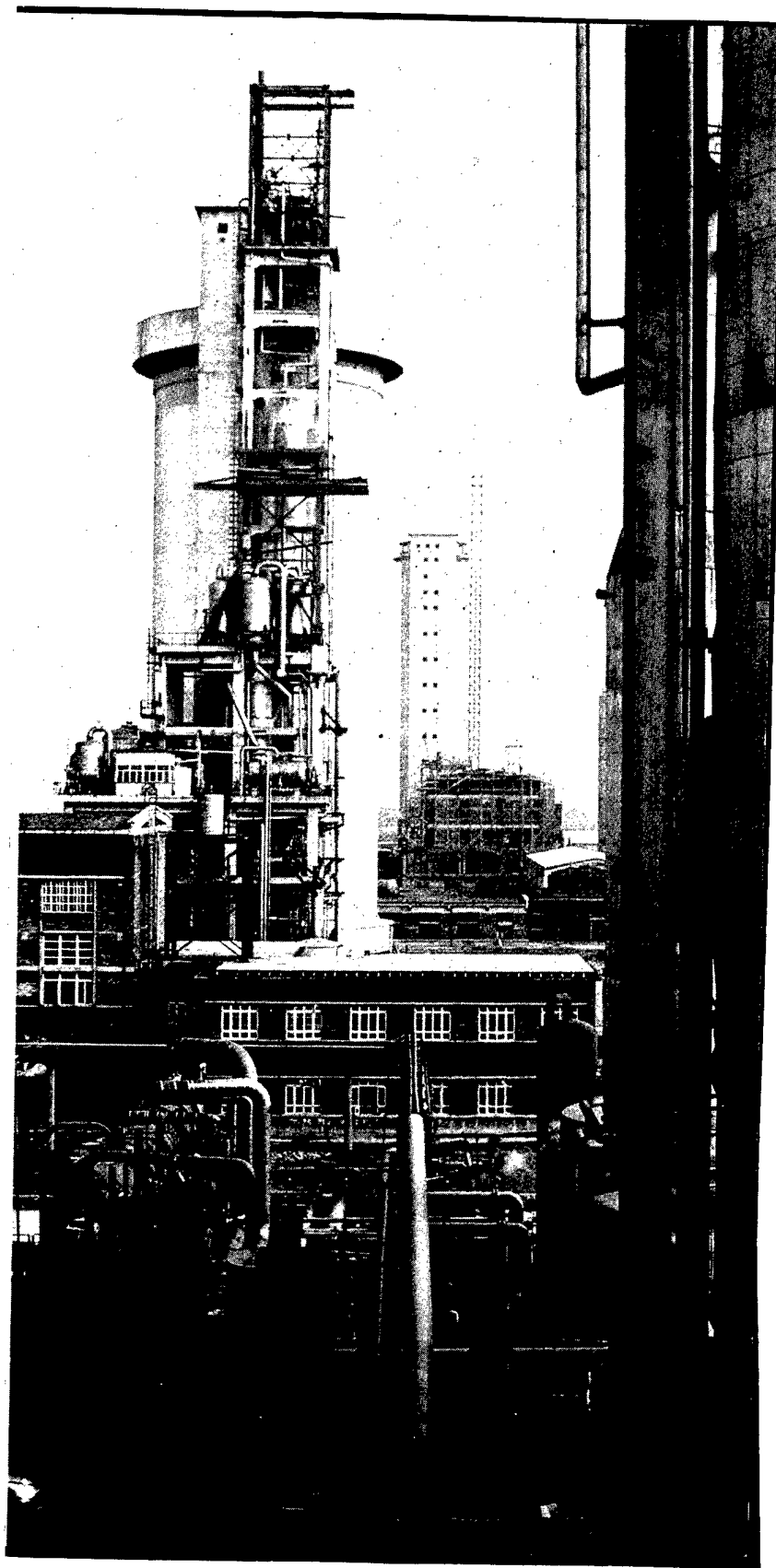


Fig. 27 Photograph of the urea pelletizing tower of the Yunnan Natural Gas Chemicals Plant

[Source: Kunming YUNNAN HUABAO [YUNNAN PICTORIAL] in Chinese No 3, 1980, p 1]