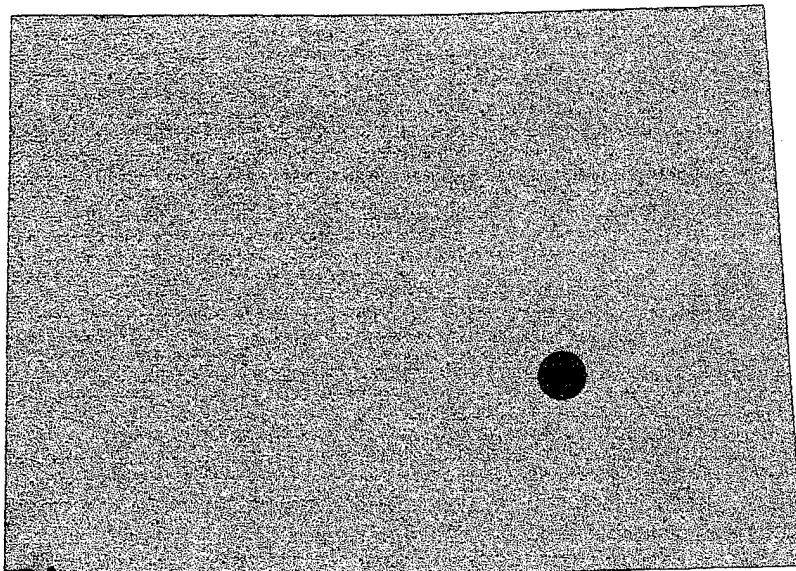


10066



COLLECTIONS SUMMARY FOR PUEBLO DEPOT ACTIVITY, COLORADO

U.S. Army NAGPRA Compliance Project,
Technical Report No. 54



DISTRIBUTION STATEMENT A
Approved for Public Release
Distribution Unlimited

19990603 056

Prepared for the
U.S. Army Environmental Center,
Environmental Compliance Division

by the
U.S. Army Corps of Engineers,
St. Louis District,
*Mandatory Center of Expertise for the Curation and Management
of Archaeological Collections*

REPORT DOCUMENTATION PAGE

Form Approved
OMB No. 0704-0188

Public reporting burden for this collection of information is estimated to average 1 hour per response, including the time for reviewing instructions, searching existing data sources, gathering and maintaining the data needed, and completing and reviewing the collection of information. Send comments regarding this burden estimate or any other aspect of this collection of information, including suggestions for reducing this burden, to Washington Headquarters Services, Directorate for Information Operations and Reports, 1215 Jefferson Davis Highway, Suite 1204, Arlington, VA 22202-4302, and to the Office of Management and Budget, Paperwork Reduction Project (0704-0188), Washington, DC 20503.

1. AGENCY USE ONLY <i>(Leave blank)</i>	2. REPORT DATE November 1995	3. REPORT TYPE AND DATES COVERED Final November 1995	
4. TITLE AND SUBTITLE An Archaeological Collections Summary for Pueblo Depot Activity		5. FUNDING NUMBERS	
6. AUTHOR(S) U.S. Army Engineer District, St. Louis, Mandatory Center of Expertise for the Curation and Management of Archaeological Collections (MCX)		8. PERFORMING ORGANIZATION REPORT NUMBER U.S. Army NAGPRA Compliance Project, NAGPRA Technical Report No.54	
7. PERFORMING ORGANIZATION NAME(S) AND ADDRESS(ES) U.S. Army Engineer District, St. Louis, Mandatory Center of Expertise for the Curation and Management of Archaeological Collections (CELMS-PD-C) 1222 Spruce Street, St. Louis, MO 63103		10. SPONSORING / MONITORING AGENCY REPORT NUMBER SFIM-AEC-EC-CR-96127	
9. SPONSORING / MONITORING AGENCY NAME(S) AND ADDRESS(ES) U.S. Army Environmental Center, Environmental Compliance Division (SFIM-AEC-ECN), Aberdeen Proving Ground, MD 21010-5401		11. SUPPLEMENTARY NOTES This research was supported in part by an appointment to the Research Participation Program at the St Louis District, U.S. Army Corps of Engineers administered by the Oak Ridge Institute for Science and Education through an interagency agreement between the U.S. Department of Energy and the St. Louis District, U.S. Army Corps of Engineers.	
12a. DISTRIBUTION / AVAILABILITY STATEMENT Approved for public release - distribution unlimited		12b. DISTRIBUTION CODE A	
13. ABSTRACT <i>(Maximum 200 words)</i> The U.S. Army Environmental Center tasked the Mandatory Center of Expertise for the Curation and Management of Archaeological Collections (MCX) with the job of assisting the Army in complying with the Native American Graves Protection and Repatriation Act (NAGPRA), P.L. 101-601. The MCX was asked to locate and assess archaeological collections derived from Army lands, to identify the Native American or Native Hawaiian organizations culturally affiliated with the collections, and to draft Section 6 summary letters for each installation. A two-stage process was used to identify, locate and assess the contents of the collections, consisting of archival research and telephone interviews with the repository personnel. This report conveys the results of the collection research completed for the compliance with Section 6 of NAGPRA			
14. SUBJECT TERMS Archaeology; curation; cultural resources management; funerary objects; Native Americans; NAGPRA; Pueblo Depot Activity			15. NUMBER OF PAGES 37
17. SECURITY CLASSIFICATION OF REPORT Unclassified			16. PRICE CODE
18. SECURITY CLASSIFICATION OF THIS PAGE Unclassified	19. SECURITY CLASSIFICATION OF ABSTRACT Unclassified	20. LIMITATION OF ABSTRACT UL	

**AN ARCHAEOLOGICAL COLLECTIONS SUMMARY
FOR
PUEBLO DEPOT ACTIVITY**

**Information Provided for Compliance with the
Native American Graves Protection and Repatriation Act
Section 6 Summary**

**Prepared for the
U.S. Army Environmental Center,
Environmental Compliance Division
Aberdeen Proving Ground, Maryland**

**By
U.S. Army Corps of Engineers,
St. Louis District,
Mandatory Center of Expertise for the
Curation and Management of Archaeological Collections,
U.S. Army NAGPRA Compliance Project,
Technical Report No. 54**

November 1995

CONTENTS

1	OBJECTIVES AND METHODS.....	1
2	RESEARCH RESULTS.....	2
	Archaeological Investigations at Pueblo Depot Activity.....	2
	Summary of Archaeological Collections.....	2
	References to Archaeological Investigations.....	3
	Native American Tribes Associated with Pueblo Depot Activity....	3
3	SECTION 6 COMPLIANCE.....	5
4	REFERENCES CITED.....	6
APPENDIX I	DRAFT SECTION 6 SUMMARY LETTERS.....	8
APPENDIX II	NATIVE AMERICAN POINTS OF CONTACT.....	26
APPENDIX III	SUMMARY OF CURRENT LOCATIONS OF COLLECTIONS FROM PUEBLO DEPOT ACTIVITY	28
APPENDIX IV	MCX LIST OF REFERENCES.....	31
APPENDIX V	NADB LIST OF REFERENCES.....	37

OBJECTIVES AND METHODS

The U.S. Army Environmental Center (AEC) tasked the Mandatory Center of Expertise for the Curation and Management of Archaeological Collections (MCX) with the job of assisting Army installation personnel in complying with the requirements of the Native American Graves Protection and Repatriation Act (P.L. 101-601, NAGPRA). The MCX was asked to locate and assess archaeological collections derived from Army-owned lands, to identify the federally recognized Native American tribes most likely culturally affiliated with the collections, to draft Section 6 Summary letters for each installation, and to conduct physical inventories of any collections that contain human skeletal remains. This report conveys the results of the collections research completed to assist Pueblo Depot Activity in complying with the Section 6 Summary requirements of NAGPRA.

The MCX used a two-stage process to identify, locate, and assess the contents of archaeological collections from the installation. First, archival research was performed to review all archaeological site records and reports for the installation. Second, telephone interviews were conducted with personnel at installations, universities, museums, and archaeological contractors that were identified during the archival research as possible repositories of Army collections. The MCX did not physically verify the existence of collections and, as such, the information contained in this report is based on background record reviews and information obtained via telephone interviews with the aforementioned installation personnel and institution professionals.

Archival research for Pueblo Depot Activity began with a search of the National Archeological Data Base (NADB) for references pertaining to the installation. This was followed by a thorough examination of all archaeological site forms and a literature review of all pertinent archaeological reports and manuscripts on file at the Colorado Office of Archaeology and Historic Preservation in Denver. The records search was performed in May 1995, and sought to identify any work on the installation that may have produced archaeological collections.

Subsequent telephone interviews to potential collections repositories ascertained whether the materials were present and the range of objects in each collection. Once the collections were located and assessed, MCX personnel identified federally recognized Native American tribes that are likely to be culturally affiliated with the materials in the collections. Draft Section 6 Summary letters are enclosed for each of these tribes (Appendix I), as well as a listing of each current tribal chairperson (Appendix II).

RESEARCH RESULTS

ARCHAEOLOGICAL INVESTIGATIONS AT PUEBLO DEPOT ACTIVITY

In 1984, the archaeological overview and management plan developed for Pueblo Depot Activity noted that no professional surveys or excavations had been conducted on the installation (Montgomery 1984). Prior to that time, one site, 5PE67, had been reported on the installation. No additional work had been conducted other than an inventory of historic buildings on the installation (Hess 1984). More recently, Larson-Tibesar Associates, Inc. of Laramie, Wyoming, conducted a survey of portions of the post and made a small collection of artifacts from the surface of prehistoric sites (Larson and Penny 1994).

The site form filed for 5PE67 indicates that lithic debris was collected from the site. No other archaeological work was identified in the MCX review of the Colorado Office of Archaeology and Historic Preservation's files.

SUMMARY OF ARCHAEOLOGICAL COLLECTIONS

A total of approximately 25 artifacts and associated documentation have been reportedly identified for Pueblo Depot Activity. Artifacts recovered include prehistoric lithics, ceramics, and animal bone. As of the date of this report, the artifacts are located in the following repository:

Larson-Tibesar Associates, Inc., Laramie, Wyoming	25 artifacts and associated documents
---	---------------------------------------

The attached *Summary of Current Locations of Archaeological Collections from Pueblo Depot Activity* (Appendix III) provides detailed information about each collection derived as a result of archaeological investigations at the installation. A collection consists of all of the materials, artifacts and associated documentation (e.g., field notes, maps, photos, data analyses, correspondence), produced as a result of an archaeological investigation or project at a single site or multiple sites. In some cases, the same archaeological site may have been investigated by various individuals or organizations. Depending on where the resulting collections are curated, they may be stored and identified as separate collections or separate components of a single collection. In cases where the artifacts and records have become separated, we list the records collections repository as well.

Collections Not Located

Every attempt has been made to locate all collections cited on available archaeological site records or in published and unpublished references to archaeological investigations on the installation. However, no artifacts from SPE67 could be located although the state site form indicates that lithics were collected.

NAGPRA-Related Items

The MCX did not identify any skeletal remains or associated funerary goods collected from Pueblo Depot Activity property. Nor were there any artifacts referred to as sacred objects or objects of cultural patrimony in the literature reviewed. However, the final determination of any funerary objects, sacred objects or objects of cultural patrimony among the Pueblo Depot Activity collections may be established upon further consultation with culturally affiliated Native American tribes according to the definitions and restrictions specified in NAGPRA.

REFERENCES TO ARCHAEOLOGICAL INVESTIGATIONS

Two sets of references regarding archaeological work conducted on Pueblo Depot Activity are attached: Appendix IV contains the list of references reviewed by the MCX during its archival research; and Appendix V is the list of references contained in the National Archeological Data Base (NADB).

NATIVE AMERICAN TRIBES ASSOCIATED WITH PUEBLO DEPOT ACTIVITY

The cultural affiliation for the artifacts collected from Pueblo Depot Activity was not stated in the reports or site files, however there are historic records of the Native American occupation of the area. The aboriginal occupation of this area is not clearly defined as historic accounts of Native Americans in the area of the installation reflect a large migration of tribes from the northern to the southern Great Plains. As a consequence, several tribes were reported historically in the general area now occupied by the depot in eastern central Colorado.

From the 1500s to about 1730, the area was used as hunting territory by the Paloma and Cuartelejo Apache until they were forced out by the Comanches (and possibly Shoshones) (Gunnerson 1987:132, Gunnerson and Gunnerson 1988:29).

In 1775, the Comanche were reported in the area of the installation (Gunnerson and Gunnerson 1988:30-31). The Comanche were a continued presence south of the Arkansas River until 1867 when they were settled on a reservation in Oklahoma.

The Utes, although currently located in extreme southwestern Colorado, were also noted in southern Colorado, often with the Comanche, from the New Mexico border as far north as the Arkansas River. However, by the mid-1800s, the Utes were present in the area only as raiding parties (Gunnerson and Gunnerson 1988:28).

In 1804, Lewis and Clark also noted the presence of Kiowa in the headwaters regions of the Arkansas and Platte Rivers (Gunnerson and Gunnerson 1988:11). In 1805, a group identified as the Kiowa skirmished with Spaniards on the Arkansas River just east of Las Animas, Colorado (Gunnerson and Gunnerson 1988:13). In 1820, a band of Kiowa were noted in the vicinity of Fowler, Colorado, just southeast of the installation (Gunnerson and Gunnerson 1988:14). The Arkansas River served as a boundary between the Comanche, Kiowa and Kiowa Apache to the south, and the Arapaho and Cheyenne to the north (Gunnerson 1987:129).

A group of hunters/traders dispatched by Manuel Lisa in 1811 noted the presence of Arapahos in the headwaters region of the Arkansas and Platte rivers. In 1821, Jacob Fowler encountered a gathering of tribes which included the Arapaho, Cheans (Cheyenne), Kiowa, Ietans (Comanche), and Snakes (Shoshone) along the upper Arkansas River (Gunnerson and Gunnerson 1988:12). Although it appears that these tribes commonly met in the area, it is significant that Chief Bear-Tooth of the Arapaho appears to have been the most influential of leaders in the area (Gunnerson and Gunnerson 1988:38). The historic encounters related by Gunnerson and Gunnerson (1988) typically mention that the Cheyenne are found with the Arapaho. Both tribes originated near the Great Lakes and migrated south and west, the Arapaho arriving in the region of the Arkansas River first (Gunnerson and Gunnerson 1988:41). By the mid-1800s their presence was firmly established and the Fort Laramie Treaty of 1851 designates the region as the territory of the Cheyenne and Arapaho (Gunnerson and Gunnerson 1988:39). And, the 1978 Indian Land Claims map (U.S.G.S. n.d.) indicates judicially established lands for the Northern Cheyenne, the Northern Arapaho, and the Cheyenne and Arapaho directly north of the installation.

There are several current tribal entities representing the tribes discussed above which are Federally recognized. These tribes are the Northern Cheyenne and Arapaho, and the Cheyenne-Arapaho (U.S.G.S. n.d., Wissler 1966:64-65), the Kiowa Tribe of Oklahoma, the Southern Ute and Ute Mountain Indian Tribes, which are currently located in extreme southwestern Colorado (Marino 1994:552, Waldman 1988:49), the Comanche, the Jicarilla Apache Tribe, of which the Paloma and Cuartelejo Apache are bands (Tiller 1983:441), and the Shoshone.

SECTION 6 COMPLIANCE

P.L. 101-601 (NAGPRA) requires that federal agencies engage in active consultation with Native Americans of federally recognized tribes and/or lineal descendants who may be culturally affiliated with the archaeological collections from the installation. Enclosed are draft NAGPRA Section 6 Summary letters (Appendix I) and a list of the tribal chairpersons from the federally recognized tribes which may be culturally affiliated with the collections (Appendix II).

Initial consultation should be conducted on a government-to-government basis. Refer to P.L. 101-601 (NAGPRA) for specifics on required Native American consultation and the legal definitions of items subject to NAGPRA.

REFERENCES CITED

Gunnerson, James H.

- 1987 Archaeology of the High Plains. *Cultural Resource Series* No. 19. Bureau of Land Management, Denver, Colorado.

Gunnerson, James H. and Dolores A. Gunnerson

- 1988 Ethnohistory of the High Plains. *Cultural Resource Series* No. 26. Bureau of Land Management, Denver, Colorado

Hess, Jeffrey A.

- 1984 *Historic Properties Report, Pueblo Depot Activity Pueblo, Colorado*. Report prepared by Macdonald and Mack Partnership, Minneapolis, Minnesota. Submitted to Building Technology Incorporated, Silver Spring, Maryland.

Larson, Thomas and Dori M. Penny, eds.

- 1994 *Results of a Class III Pedestrian Survey of Portions of the Pueblo Depot Activity Area, Pueblo County, Colorado (Draft)*. 2 Volumes. Report prepared by Larson-Tibesar Associates, Inc. Submitted to Gulf Engineers & Consultants, Baton Rouge, Louisiana. Funded by U.S. Army Corps of Engineers, Omaha District (Contract No. DACW45-92-D-011).

Marino, Cesare

- 1994 Reservations. In *Native America in the Twentieth Century: An Encyclopedia*, edited by Mary B. Davis, pp. 544-556. Garland Publishing, Inc. New York and London.

Montgomery, John

- 1984 *An Archeological Overview and Management Plan for the Pueblo Depot Activity, Pueblo County, Colorado*. Report prepared by Nickens and Associates, Montrose, Colorado. Submitted to U.S. Dept. of the Interior, National Park Service, Atlanta, Georgia.

Tiller, Veronica

- 1983 Jicarilla Apache. In Southwest, edited by Alfonso Ortiz, pp. 440-461. *Handbook of North American Indians*, Volume 10, William C. Sturtevant, general editor. Smithsonian Institution, Washington, D.C.

U.S.G.S.

n.d. *Indian Lands Judicially Established 1978*. Map prepared by the United States Geological Survey for the Indian Claims Commission.

Waldman, Carl

1988 *Encyclopedia of Native American Tribes*. Facts on File Publications, New York, New York.

Wissler, Clark

1966 *Indians of the United States*. Doubleday and Company, Inc. Garden City, New York

APPENDIX I

DRAFT SECTION 6 SUMMARY LETTERS FOR PUEBLO DEPOT ACTIVITY, COLORADO

[Installation Header]

Mr. Leonard Atole, President
Jicarilla Apache Tribe
P.O. Box 507
Dulce, NM 87528

Dear Mr. Atole:

I am writing to inform you of collections held by Pueblo Depot Activity that may contain Native American cultural items, as defined by the Native American Graves Protection and Repatriation Act (NAGPRA), that are, or are likely to be, culturally affiliated with the Jicarilla Apache. Pueblo Depot Activity has documented these archaeological collections in a Summary in accordance with the requirements of Section 6 of NAGPRA.

Pueblo Depot Activity is responsible for one collection consisting of prehistoric lithics, ceramics, and animal bone reportedly housed at the following repository:

Larson-Tibesar Associates, Inc., Laramie, Wyoming	25 artifacts and associated documents
---	---------------------------------------

As noted, the collection includes all associated documentation such as field notes, photographs, and correspondence.

We are notifying the Jicarilla Apache Tribe because some of these materials were found in, or around, the area thought to be part of the territory occupied or used historically by this group. In accordance with Section 6 of NAGPRA, we are inviting you to consult with us regarding these archaeological collections. Upon your written request, we will provide you access to review our records, catalogues, relevant studies, or other pertinent data for the purpose of determining the geographic origin, cultural affiliation, and basic facts surrounding acquisition and accession of these collections.

Please feel free to contact [installation POC] regarding any of these issues, at [phone number].

To facilitate discussions between Pueblo Depot Activity and the Jicarilla Apache Tribe on these matters, please forward the name and method of contacting your tribal representative, traditional religious leader, or preferred NAGPRA point of contact. We look forward to working with you.

Sincerely,

[Commander's signature]

CF: AMC Commander, U.S. Army Materiel Command
 ATTN: AMCEN-ER (Maria Chuck Longo)
 5001 Eisenhower Avenue
 Alexandria, VA 22333

USAEC Commander, US Army Environmental Center
 ATTN: SFIM-AEC-EC (Guldenzopf)
 Aberdeen Proving Ground, MD 21010-5401

MCX Commander, US Army Corps of Engineers
 ATTN: CELMS-PD-C (Trimble)
 1222 Spruce Street
 St. Louis, MO 63103-2833

[Installation Header]

Mr. Harvey Spoonwater Sr., Chairman
Arapaho Business Council
P.O. Box 396
Fort Washakie, Wyoming 82514

Dear Mr. Spoonwater:

I am writing to inform you of collections held by Pueblo Depot Activity that may contain Native American cultural items, as defined by the Native American Graves Protection and Repatriation Act (NAGPRA), that are, or are likely to be, culturally affiliated with the Arapaho. Pueblo Depot Activity has documented these archaeological collections in a Summary in accordance with the requirements of Section 6 of NAGPRA.

Pueblo Depot Activity is responsible for one collection consisting of prehistoric lithics, ceramics, and animal bone reportedly housed at the following repository:

Larson-Tibesar Associates, Inc., Laramie, Wyoming	25 artifacts and associated documents
---	---------------------------------------

As noted, the collection includes all associated documentation such as field notes, photographs, and correspondence.

We are notifying the Arapaho because some of these materials were found in, or around, the area thought to be part of the territory occupied or used historically by this group. In accordance with Section 6 of NAGPRA, we are inviting you to consult with us regarding these archaeological collections. Upon your written request, we will provide you access to review our records, catalogues, relevant studies, or other pertinent data for the purpose of determining the geographic origin, cultural affiliation, and basic facts surrounding acquisition and accession of these collections.

Please feel free to contact [installation POC] regarding any of these issues, at [phone number].

To facilitate discussions between Pueblo Depot Activity and the Arapaho on these matters, please forward the name and method of contacting your tribal representative, traditional religious leader, or preferred NAGPRA point of contact. We look forward to working with you.

Sincerely,

[Commander's signature]

CF: AMC Commander, U.S. Army Materiel Command
 ATTN: AMCEN-ER (Maria Chuck Longo)
 5001 Eisenhower Avenue
 Alexandria, VA 22333

USAEC Commander, US Army Environmental Center
 ATTN: SFIM-AEC-EC (Guldenzopf)
 Aberdeen Proving Ground, MD 21010-5401

MCX Commander, US Army Corps of Engineers
 ATTN: CELMS-PD-C (Trimble)
 1222 Spruce Street
 St. Louis, MO 63103-2833

[Installation Header]

Mr. Llevando Fisher, President
Northern Cheyenne Tribal Council
P.O. Box 128
Lame Deer, Montana 59043

Dear Mr. Fisher:

I am writing to inform you of collections held by Pueblo Depot Activity that may contain Native American cultural items, as defined by the Native American Graves Protection and Repatriation Act (NAGPRA), that are, or are likely to be, culturally affiliated with the Northern Cheyenne. Pueblo Depot Activity has documented these archaeological collections in a Summary in accordance with the requirements of Section 6 of NAGPRA.

Pueblo Depot Activity is responsible for one collection consisting of prehistoric lithics, ceramics, and animal bone reportedly housed at the following repository:

Larson-Tibesar Associates, Inc., Laramie, Wyoming	25 artifacts and associated documents
---	---------------------------------------

As noted, the collection includes all associated documentation such as field notes, photographs, and correspondence.

We are notifying the Northern Cheyenne because some of these materials were found in, or around, the area thought to be part of the territory occupied or used historically by this group. In accordance with Section 6 of NAGPRA, we are inviting you to consult with us regarding these archaeological collections. Upon your written request, we will provide you access to review our records, catalogues, relevant studies, or other pertinent data for the purpose of determining the geographic origin, cultural affiliation, and basic facts surrounding acquisition and accession of these collections.

Please feel free to contact [installation POC] regarding any of these issues, at [phone number].

To facilitate discussions between Pueblo Depot Activity and the Northern Cheyenne on these matters, please forward the name and method of contacting your tribal representative, traditional religious leader, or preferred NAGPRA point of contact. We look forward to working with you.

Sincerely,

[Commander's signature]

CF: AMC Commander, U.S. Army Materiel Command
 ATTN: AMCEN-ER (Maria Chuck Longo)
 5001 Eisenhower Avenue
 Alexandria, VA 22333

USAEC Commander, US Army Environmental Center
 ATTN: SFIM-AEC-EC (Guldenzopf)
 Aberdeen Proving Ground, MD 21010-5401

MCX Commander, US Army Corps of Engineers
 ATTN: CELMS-PD-C (Trimble)
 1222 Spruce Street
 St. Louis, MO 63103-2833

[Installation Header]

Ms. Viola Hatch, Chairperson
Cheyenne-Arapaho Business Committee
P.O. Box 38
Concho, Oklahoma 73022

Dear Ms. Hatch:

I am writing to inform you of collections held by Pueblo Depot Activity that may contain Native American cultural items, as defined by the Native American Graves Protection and Repatriation Act (NAGPRA), that are, or are likely to be, culturally affiliated with the Cheyenne or Arapaho. Pueblo Depot Activity has documented these archaeological collections in a Summary in accordance with the requirements of Section 6 of NAGPRA.

Pueblo Depot Activity is responsible for one collection consisting of prehistoric lithics, ceramics, and animal bone reportedly housed at the following repository:

Larson-Tibesar Associates, Inc., Laramie, Wyoming	25 artifacts and associated documents
---	---------------------------------------

As noted, the collection includes all associated documentation such as field notes, photographs, and correspondence.

We are notifying the Cheyenne and Arapaho because some of these materials were found in, or around, the area thought to be part of the territory occupied or used historically by this group. In accordance with Section 6 of NAGPRA, we are inviting you to consult with us regarding these archaeological collections. Upon your written request, we will provide you access to review our records, catalogues, relevant studies, or other pertinent data for the purpose of determining the geographic origin, cultural affiliation, and basic facts surrounding acquisition and accession of these collections.

Please feel free to contact [installation POC] regarding any of these issues, at [phone number].

To facilitate discussions between Pueblo Depot Activity and the Cheyenne and Arapaho on these matters, please forward the name and method of contacting your tribal representative, traditional religious leader, or preferred NAGPRA point of contact. We look forward to working with you.

Sincerely,

[Commander's signature]

CF: AMC Commander, U.S. Army Materiel Command
 ATTN: AMCEN-ER (Maria Chuck Longo)
 5001 Eisenhower Avenue
 Alexandria, VA 22333

USAEC Commander, US Army Environmental Center
 ATTN: SFIM-AEC-EC (Guldenzopf)
 Aberdeen Proving Ground, MD 21010-5401

MCX Commander, US Army Corps of Engineers
 ATTN: CELMS-PD-C (Trimble)
 1222 Spruce Street
 St. Louis, MO 63103-2833

[Installation Header]

Mr. Wallace Coffey, Chairman
Comanche Tribal Business Committee
HC 32 Box 1720
Lawton, Oklahoma 73502

Dear Mr. Edge:

I am writing to inform you of collections held by Pueblo Depot Activity that may contain Native American cultural items, as defined by the Native American Graves Protection and Repatriation Act (NAGPRA), that are, or are likely to be, culturally affiliated with the Comanche Tribe. Pueblo Depot Activity has documented these archaeological collections in a Summary in accordance with the requirements of Section 6 of NAGPRA.

Pueblo Depot Activity is responsible for one collection consisting of prehistoric lithics, ceramics, and animal bone reportedly housed at the following repository:

Larson-Tibesar Associates, Inc., Laramie, Wyoming	25 artifacts and associated documents
---	---------------------------------------

As noted, the collection includes all associated documentation such as field notes, photographs, and correspondence.

We are notifying the Comanche Tribe because some of these materials were found in, or around, the area thought to be part of the territory occupied or used historically by this group. In accordance with Section 6 of NAGPRA, we are inviting you to consult with us regarding these archaeological collections. Upon your written request, we will provide you access to review our records, catalogues, relevant studies, or other pertinent data for the purpose of determining the geographic origin, cultural affiliation, and basic facts surrounding acquisition and accession of these collections.

Please feel free to contact [installation POC] regarding any of these issues, at [phone number].

To facilitate discussions between Pueblo Depot Activity and the Comanche Tribe on these matters, please forward the name and method of contacting your tribal representative, traditional religious leader, or preferred NAGPRA point of contact. We look forward to working with you.

Sincerely,

[Commander's signature]

CF: AMC Commander, U.S. Army Materiel Command
 ATTN: AMCEN-ER (Maria Chuck Longo)
 5001 Eisenhower Avenue
 Alexandria, VA 22333

USAEC Commander, US Army Environmental Center
 ATTN: SFIM-AEC-EC (Guldenzopf)
 Aberdeen Proving Ground, MD 21010-5401

MCX Commander, US Army Corps of Engineers
 ATTN: CELMS-PD-C (Trimble)
 1222 Spruce Street
 St. Louis, MO 63103-2833

[Installation Header]

Mr. Lawrence Edge
Cultural and Historical Liaison
Kiowa Tribe of Oklahoma
P.O. Box 369
Carnegie, Oklahoma 73015

Dear Mr. Edge:

I am writing to inform you of collections held by Pueblo Depot Activity that may contain Native American cultural items, as defined by the Native American Graves Protection and Repatriation Act (NAGPRA), that are, or are likely to be, culturally affiliated with the Kiowa Tribe. Pueblo Depot Activity has documented these archaeological collections in a Summary in accordance with the requirements of Section 6 of NAGPRA.

Pueblo Depot Activity is responsible for one collection consisting of prehistoric lithics, ceramics, and animal bone reportedly housed at the following repository:

Larson-Tibesar Associates, Inc., Laramie, Wyoming	25 artifacts and associated documents
---	---------------------------------------

As noted, the collection includes all associated documentation such as field notes, photographs, and correspondence.

We are notifying the Kiowa Tribe of Oklahoma because some of these materials were found in, or around, the area thought to be part of the territory occupied or used historically by this group. In accordance with Section 6 of NAGPRA, we are inviting you to consult with us regarding these archaeological collections. Upon your written request, we will provide you access to review our records, catalogues, relevant studies, or other pertinent data for the purpose of determining the geographic origin, cultural affiliation, and basic facts surrounding acquisition and accession of these collections.

Please feel free to contact [installation POC] regarding any of these issues, at [phone number].

To facilitate discussions between Pueblo Depot Activity and the Kiowa Tribe on these matters, please forward the name and method of contacting your tribal representative, traditional religious leader, or preferred NAGPRA point of contact. We look forward to working with you.

Sincerely,

[Commander's signature]

CF: AMC Commander, U.S. Army Materiel Command
 ATTN: AMCEN-ER (Maria Chuck Longo)
 5001 Eisenhower Avenue
 Alexandria, VA 22333

USAEC Commander, US Army Environmental Center
 ATTN: SFIM-AEC-EC (Guldenzopf)
 Aberdeen Proving Ground, MD 21010-5401

MCX Commander, US Army Corps of Engineers
 ATTN: CELMS-PD-C (Trimble)
 1222 Spruce Street
 St. Louis, MO 63103-2833

[Installation Header]

Mr. Alfred Ward, Chairman
Shoshone Business Council
P.O. Box 217
Fort Washakie, Wyoming 82514

Dear Mr. Ward:

I am writing to inform you of collections held by Pueblo Depot Activity that may contain Native American cultural items, as defined by the Native American Graves Protection and Repatriation Act (NAGPRA), that are, or are likely to be, culturally affiliated with the Shoshone. Pueblo Depot Activity has documented these archaeological collections in a Summary in accordance with the requirements of Section 6 of NAGPRA.

Pueblo Depot Activity is responsible for one collection consisting of prehistoric lithics, ceramics, and animal bone reportedly housed at the following repository:

Larson-Tibesar Associates, Inc., Laramie, Wyoming	25 artifacts and associated documents
---	---------------------------------------

As noted, the collection includes all associated documentation such as field notes, photographs, and correspondence.

We are notifying the Shoshone because some of these materials were found in, or around, the area thought to be part of the territory occupied or used historically by this group. In accordance with Section 6 of NAGPRA, we are inviting you to consult with us regarding these archaeological collections. Upon your written request, we will provide you access to review our records, catalogues, relevant studies, or other pertinent data for the purpose of determining the geographic origin, cultural affiliation, and basic facts surrounding acquisition and accession of these collections.

Please feel free to contact [installation POC] regarding any of these issues, at [phone number].

To facilitate discussions between Pueblo Depot Activity and the Shoshone on these matters, please forward the name and method of contacting your tribal representative, traditional religious leader, or preferred NAGPRA point of contact. We look forward to working with you.

Sincerely,

[Commander's signature]

CF: AMC Commander, U.S. Army Materiel Command
 ATTN: AMCEN-ER (Maria Chuck Longo)
 5001 Eisenhower Avenue
 Alexandria, VA 22333

USAEC Commander, US Army Environmental Center
 ATTN: SFIM-AEC-EC (Guldenzopf)
 Aberdeen Proving Ground, MD 21010-5401

MCX Commander, US Army Corps of Engineers
 ATTN: CELMS-PD-C (Trimble)
 1222 Spruce Street
 St. Louis, MO 63103-2833

[Installation Header]

Mr. Leonard C. Burch
Southern Ute Tribal Council
P.O. Box 737
Ignacio, Colorado 81137

Dear Mr. Burch:

I am writing to inform you of collections held by Pueblo Depot Activity that may contain Native American cultural items, as defined by the Native American Graves Protection and Repatriation Act (NAGPRA), that are, or are likely to be, culturally affiliated with the Southern Ute Tribe. Pueblo Depot Activity has documented these archaeological collections in a Summary in accordance with the requirements of Section 6 of NAGPRA.

Pueblo Depot Activity is responsible for one collection consisting of prehistoric lithics, ceramics, and animal bone reportedly housed at the following repository:

Larson-Tibesar Associates, Inc., Laramie, Wyoming	25 artifacts and associated documents
---	---------------------------------------

As noted, the collection includes all associated documentation such as field notes, photographs, and correspondence.

We are notifying the Southern Ute Tribe because some of these materials were found in, or around, the area thought to be part of the territory occupied or used historically by this group. In accordance with Section 6 of NAGPRA, we are inviting you to consult with us regarding these archaeological collections. Upon your written request, we will provide you access to review our records, catalogues, relevant studies, or other pertinent data for the purpose of determining the geographic origin, cultural affiliation, and basic facts surrounding acquisition and accession of these collections.

Please feel free to contact [installation POC] regarding any of these issues, at [phone number].

To facilitate discussions between Pueblo Depot Activity and the Southern Ute Tribe on these matters, please forward the name and method of contacting your tribal representative, traditional religious leader, or preferred NAGPRA point of contact. We look forward to working with you.

Sincerely,

[Commander's signature]

CF:	AMC	Commander, U.S. Army Materiel Command ATTN: AMCEN-ER (Maria Chuck Longo) 5001 Eisenhower Avenue Alexandria, VA 22333
	USAEC	Commander, US Army Environmental Center ATTN: SFIM-AEC-EC (Guldenzopf) Aberdeen Proving Ground, MD 21010-5401
	MCX	Commander, US Army Corps of Engineers ATTN: CELMS-PD-C (Trimble) 1222 Spruce Street St. Louis, MO 63103-2833

[Installation Header]

Ms. Judy Knight-Frank, Chairperson
Ute Mountain Ute Tribe Farm and Ranch Enterprise
General Delivery
Towaoc, Colorado 81334

Dear Ms. Knight:

I am writing to inform you of collections held by Pueblo Depot Activity that may contain Native American cultural items, as defined by the Native American Graves Protection and Repatriation Act (NAGPRA), that are, or are likely to be, culturally affiliated with the Ute Mountain Tribe. Pueblo Depot Activity has documented these archaeological collections in a Summary in accordance with the requirements of Section 6 of NAGPRA.

Pueblo Depot Activity is responsible for one collection consisting of prehistoric lithics, ceramics, and animal bone reportedly housed at the following repository:

Larson-Tibesar Associates, Inc., Laramie, Wyoming	25 artifacts and associated documents
---	---------------------------------------

As noted, the collection includes all associated documentation such as field notes, photographs, and correspondence.

We are notifying the Ute Mountain Tribe because some of these materials were found in, or around, the area thought to be part of the territory occupied or used historically by this group. In accordance with Section 6 of NAGPRA, we are inviting you to consult with us regarding these archaeological collections. Upon your written request, we will provide you access to review our records, catalogues, relevant studies, or other pertinent data for the purpose of determining the geographic origin, cultural affiliation, and basic facts surrounding acquisition and accession of these collections.

Please feel free to contact [installation POC] regarding any of these issues, at [phone number].

To facilitate discussions between Pueblo Depot Activity and the Ute Mountain Tribe on these matters, please forward the name and method of contacting your tribal representative, traditional religious leader, or preferred NAGPRA point of contact. We look forward to working with you.

Sincerely,

[Commander's signature]

CF:	AMC	Commander, U.S. Army Materiel Command ATTN: AMCEN-ER (Maria Chuck Longo) 5001 Eisenhower Avenue Alexandria, VA 22333
	USAEC	Commander, US Army Environmental Center ATTN: SFIM-AEC-EC (Guldenzopf) Aberdeen Proving Ground, MD 21010-5401
	MCX	Commander, US Army Corps of Engineers ATTN: CELMS-PD-C (Trimble) 1222 Spruce Street St. Louis, MO 63103-2833

APPENDIX II

NATIVE AMERICAN POINTS OF CONTACT FOR PUEBLO DEPOT ACTIVITY, COLORADO

FEDERALLY RECOGNIZED TRIBES:

Apache:

Mr. Leonard Atole, President
Jicarilla Apache Tribe
P.O. Box 507
Dulce, New Mexico 87528
(505) 759-3242
(505) 759-3005 FAX

Arapahoe:

Mr. Harvey Spoonwater Sr., Chairman
Arapahoe Business Council
P.O. Box 396
Fort Washakie, Wyoming 82514
(307) 332-6120
(307) 332-7543 FAX

Cheyenne:

Mr. Llevando Fisher, President
Northern Cheyenne Tribal Council
P.O. Box 128
Lame Deer, Montana 59043
(406) 477-8284
(406) 477-6210 FAX

Cheyenne-Arapaho:

Ms. Viola Hatch, Chairperson
Cheyenne-Arapaho Business Committee
P.O. Box 38
Concho, Oklahoma 73022
(405) 262-0345
(405) 262-0745 FAX

Comanche:

Mr. Wallace Coffey, Chairman
Comanche Tribal Business Committee
HC 32 Box 1720
Lawton, Oklahoma 73502
(405) 492-4988
(405) 492-4981 FAX

Kiowa:

Mr. Lawrence Edge, Cultural and Historical Liaison
Kiowa Tribe of Oklahoma
P.O. Box 369
Carnegie, Oklahoma 73015
(405) 654-2300
(405) 654-2188 FAX

Shoshone:

Mr. Alfred Ward, Chairman
Shoshone Business Council
P.O. Box 217
Fort Washakie, Wyoming 82514
(307) 332-3523
(307) 332-3055 FAX

Ute:

Mr. Leonard C. Burch
Southern Ute Tribal Council
P.O. Box 737
Ignacio, Colorado 81137
(303) 563-0100
(303) 563-0396 FAX

Ms. Judy Knight-Frank, Chairperson
Ute Mountain Ute Tribe Farm and Ranch Enterprise
General Delivery
Towaoc, Colorado 81334
(303) 565-3751
(303) 565-7412 FAX

APPENDIX III

SUMMARY OF CURRENT LOCATIONS OF ARCHAEOLOGICAL COLLECTIONS FROM PUEBLO DEPOT ACTIVITY, COLORADO

All collections information has been entered into a Paradox data base file and can be queried by any of the fields listed below, as well as by the name of the installation and by MACOM. The data base will be delivered by the MCX to the U.S. Army Environmental Center upon completion of the U.S. Army NAGPRA Compliance Project. Inquiries for additional information are welcome (MCX: 314-331-8865; U.S. Army Environmental Center NAGPRA Compliance Project: 410-671-1573). The data fields listed in the summary of collections contain the following information:

REPOSITORY:	The current location in which the collection is stored, as of the date of this report.
REPOSITORY POC:	The person contacted by the MCX, or the person to whom inquiries regarding the collection should be addressed.
TELEPHONE:	The telephone number for the repository POC.
COLLECTION ID:	The identifying unit used by the repository to store and/or locate the collection. This can be a unique accession number assigned by the repository, the archaeological site number or project name, the name of the collector of the collection, or another number or name assigned by the repository.
SITE NUMBERS:	The official site number or name only for those sites from which materials were collected. An investigator may have performed work at additional sites but did not collect any materials. Those site numbers are not included in this field.
FIELDWORK DATES:	The date(s) during which the investigation(s) occurred. This information is provided to differentiate between projects that may have investigated the same site repeatedly.

EXCAVATOR/COLLECTOR: The individual and/or organization that conducted the investigation.

COLLECTION SIZE: The volume or number of objects in a collection, estimated by the repository POC or from project reports.

DESCRIPTION OF MATERIALS: General material classes of the objects in the collection derived from data provided on site records, in references, and/or by the Repository POC.

ANTIQUITY/ARCH. PERIOD: Chronological or cultural-historical designations recorded on site records or in references specific to the collection.

CULTURAL AFFILIATION: This column contains only those ethnic identifications found in the site records or references specific to the collection. This field is left blank if no such information was recorded.

BASIS OF DETERMINATION: Documents the source of the cultural affiliation information (e.g., site record, oral testimony, reference).

SECTION 5 MATERIALS: Describes the number and kind of human skeletal remains and associated funerary objects in the collection, as indicated by the site records, references, repository management documents, or information from repository POC. If these materials are present or are suspected to be present, NAGPRA Section 5 requires a physical inventory of the materials.

Summary of Current Location of Archaeological Coll

As of November

Repository	Repository POC	Telephone	Collection ID	Site Numbers	Fieldwork Dates	Exc
Larson Tibesar Associates	Tom Larson	(307) 742-4371	Site #	5PE1668-1696	Dec. 1993	Larson Associates
Larson Tibesar Associates	Tom Larson	(307) 742-4371	Site #	5PE1700-1745	May 1994	Larson Associates

(A)

Summary of Current Location of Archaeological Collections From: Pueblo Depot Activity, Colorado [AMC]

As of November 1995

Site Numbers	Fieldwork Dates	Excavator/Collector	Collection Size	Description of Materials	Antiquity/Archaeological Pe
5PE1668-1696	Dec. 1993	Larson Tibesar Associates		Field Notes: Handwritten Only, All Else at Omaha District - Corps of Engineers	
5PE1700-1745	May 1994	Larson Tibesar Associates	< 1 cu. ft.	Lithics, Fauna, Ceramics	Prehistoric

13

to [AMC]

Description of Materials	Antiquity/Archaeological Period	Cultural Affiliation	Basis of Determination	Section 5 Materials
Handwritten Only, All Else District - Corps of Engineers		None	N/A	None
a. Ceramics	Prehistoric	None	N/A	None

Q

APPENDIX IV

MCX LIST OF REFERENCES

In addition to the references reviewed by MCX personnel at the archaeological site information center, every attempt was made to obtain references cited but not on file. Information taken from these references was coded for data relating to collections made from sites located on installation property (see attached sample of PD-C Bibliographic Data Sheet form) and entered into a data base for ease of manipulation.

Report titles were drawn directly from the title page of reports, and consist of the following fields:

FIELD	DATA ENTERED
Subject Property	Army Installation name
Last Name	Primary author's last name
First Name	Primary author's first name
Middle Initial	Primary author's middle initial
Secondary Authors	Names of secondary authors, <i>or</i> in instances where the author is a company rather than an individual, the company name is listed here
Title	Title of the reference. For letter reports, the person or agency to whom the correspondence is addressed is listed as the title.
Series	If the report is part of a publication series, the name and number are provided here.
Date	Date of publication or submission
Length	Report length in pages
Contract Number	Contract number and delivery order number, if applicable

The data for the next three fields are drawn directly from the report title page and reflect the hierarchy of contracting agencies involved in accomplishing the work. In some cases, the sponsoring agency is listed as the Army installation; in others, the intermediary contracting agent, (e.g., the Army Corps of Engineers or the National Park Service) is listed as the Sponsoring Agency.

Sponsoring Agency	Agency for which the report was prepared
Contractor	The agent contracted to perform the work
Subcontractor	The agent subcontracted to perform the work

The majority of the citations for archaeological investigations on Army land refer to unpublished reports prepared under contract with federal agencies, consequently the MCX printout was designed to address these reports. In instances where the author is a company rather than an individual, the company name is listed in the Secondary Authors field (due to the length of the field). For published references, the publisher is listed in the Sponsoring Agency field.

Page ____ of ____

Fieldwork
Page ____ of ____

NADB No.

PD-C Collection No.

PD-C Bibliography Data Sheet

Date: _____

Information obtained by: _____

PD-C Project:

Subject Property:

Repository (name and location):

Record Collection Name/Number:

Report Date and Length (in pages):

Author(s):

Title:

Contractor/Address or Publisher/Address (city, state):

Subcontractor/Address (city, state):

Report Series and Number:

Contract/Purchase Order Number(s):

Sponsoring Agency/Address:

Project Name and Location:

Principal Investigator(s)/Director(s):

Fieldwork Dates:

Type of Investigation (e.g., survey, testing, mitigation):

PD-C Bibliography Data Sheet (continued)

Site Numbers:

Archaeological Period (e.g., Hohokam, Mississippian):

Material Classes (range):

Artifact Collections and Locations:

Approximate Size of Collections (e.g., number of objects):

Record Collections and Locations:

NAGPRA Materials (Check if present)

Human Skeletal Remains _____

Objects

Associated Funerary _____

Unassociated Funerary _____

Sacred _____

Cultural Patrimony _____

Human Skeletal Remains Data Sheet
Number of Attached Sheets _____

Object Data Sheet
Number of Attached Sheets _____

Cultural Affiliation(s):

Basis for Affiliation Determination (e.g., geographic location, burial practices):

Comments:

MCX List of References for Pueblo Depot Activity, Colorado [AMC] as of November 1995

Subject property : Pueblo Ordnance Depot Activity Area, CO

Last name :

First name :

Middle Initial :

Secondary Authors : Prepared By: Hammer, Siler, George Wilson and Company

Title : Pueblo Depot Activity Reuse Development Plan.

Series :

Date : 12/94

Length :

Contract Number :

Sponsoring Agency : Office of Economic Adjustment, Department of Defense

Contractor : Pueblo Area Council of Governments

Subcontractor : Edaw Inc.

Subject property : Pueblo Ordnance Depot Activity Area, CO

Last name :

First name :

Middle Initial :

Secondary Authors : Prepared By: MacDonald and Mock Partnership, Minneapolis, MN

Title : Historic Properties Report Pueblo Depot Activity, Pueblo, Colorado (Final Report).

Series :

Date : 08/84

Length : 54

Contract Number : CX-0001-2-0033

Sponsoring Agency : Building Technology Inc., Historic American Buildings, Historic American Engineering Record, NPS

Contractor : MacDonald & Mack Partnership

Subcontractor :

Subject property : Pueblo Ordnance Depot Activity Area, CO

Last name : Larson

First name : Thomas

Middle Initial : K.

Secondary Authors : Dori M. Penny

Title : Results of a Class III Pedestrian Survey of Portions of the Pueblo Depot Activity Area, Pueblo County, Colorado. Volume I and II, Draft.

Series :

Date : 12/94

Length :

Contract Number : DACW45-92-D-011

Sponsoring Agency : US Army Corps of Engineers-Omaha District

Contractor : Gulf Engineers and Consultants

Subcontractor : Larson-Tibesar Associates Inc.

MCX List of References for Pueblo Depot Activity, Colorado [AMC] as of November 1995

Subject property : Pueblo Ordnance Depot Activity Area, CO

Last name : Montgomery

First name : John

Middle Initial :

Secondary Authors : Nickers and Associates

Title : An Archaeological Overview and Management Plan for The Pueblo Depot Activity, Pueblo County, Colorado.

Series : Final Report No. 19

Date : 10/01/84

Length :

Contract Number : CX-5000-3-0771

Sponsoring Agency : National Park Service, Russell Federal Bldg., 75 Spring St. SW, Atlanta, GA.

Contractor : Woodward-Clyde Consultants

Subcontractor : Nickens and Associates

APPENDIX V

NATIONAL ARCHEOLOGICAL DATA BASE REFERENCES FOR PUEBLO DEPOT ACTIVITY, COLORADO

No attempt has been made to edit the National Archeological Data Base format or to correct obvious errors.

Hess, Jeffrey A.

1984 Historic Properties Report, Pueblo Depot Activity Pueblo, Colorado. Macdonald and Mack Partnership, Minneapolis, MN. Submitted to Building Technology Incorporated, Silver Spring, MD.

Knudson, Ruth Ann and Schmucker, Betty

1984 An Archeological Overview and Management Plan for the Pueblo Depot Activity, Pueblo County, Colorado. Nickens and Associates, Montrose, CO. Submitted to Usdi, Nps, Atlanta, GA.

Montgomery, John

1984 An Archeological Overview and Management Plan for the Pueblo Depot Activity, Pueblo County, Colorado. Nickens and Associates, Montrose, CO. Submitted to Usdi-Nps, Atlanta, GA.

Nickens and Associates

1984 An Archeological Overview and Management Plan for the Pueblo Depot Activity, Pueblo County, Colorado. Woodward-Clyde Consultants & Nickens and Associates. Submitted to U.S. Army Materiel Development and Readiness Command.