

COLUMBIA UNIVERSITY

IN THE CITY OF NEW YORK

OFFICE OF PROJECTS AND GRANTS

Dr. Robert Soulen, Program Officer
NRL Code 6344
Naval Research Laboratory
4555 Overlook Avenue, S.W.
Washington, DC 20375-5320

Re: N00173-98-1-G014

Dear Dr. Soulen:

Pursuant to applicable grant requirements I enclose one (1) original and two (2) copies of the annual performance report for the referenced award. This report covers the period July 1, 1998 to June 30, 1999.

Sincerely,



Veronica Murray
Sr. Projects Officer

encl.

c: Director, Naval Research Laboratory-w/cy
ATTN: Code 5227
4555 Overlook Ave., S.W.
Washington, D.C. 29375-5320

Defense technical Information Center-w/cy
8725 John J. Kingman Road
Suite 0944
Ft. Belvoir, VA 22060-6218

Administrative Grants Officer-w/cy of SF298
Office of Naval Research Regional Office
495 Summer St. Room 103
Boston, MA 02210-2109

19990709 054

DTIC QUALITY INSPECTED 4

REPORT DOCUMENTATION PAGE

Form Approved
OMB No. 0704-0188

Public reporting burden for this collection of information is estimated to average 1 hour per response, including the time for reviewing instructions, searching existing data sources, gathering and maintaining the data needed, and completing and reviewing the collection of information. Send comments regarding this burden estimate or any other aspect of this collection of information, including suggestions for reducing this burden, to Washington Headquarters Services, Directorate for Information Operations and Reports, 1215 Jefferson Davis Highway, Suite 1204, Arlington, VA 22202-4302, and to the Office of Management and Budget, Paperwork Reduction Project (0704-0188), Washington, DC 20503.

1. AGENCY USE ONLY (Leave blank)	2. REPORT DATE 6/29/99	3. REPORT TYPE AND DATES COVERED Ann. Progress, 7/1/98-6/30/99
----------------------------------	---------------------------	---

4. TITLE AND SUBTITLE Epitaxial Liftoff for Fully Single-Crystal Ferroelectric Thin Films	5. FUNDING NUMBERS N00173-98-1-G014
--	--

6. AUTHOR(S) Prof. Richard M. Osgood, Jr. Dr. Miguel Levy	
---	--

7. PERFORMING ORGANIZATION NAME(S) AND ADDRESS(ES) Columbia Radiation Laboratory 530 West 120th Street rm. 1001 New York, NY 10027	8. PERFORMING ORGANIZATION REPORT NUMBER
--	--

9. SPONSORING/MONITORING AGENCY NAME(S) AND ADDRESS(ES) U.S. Army Research Office P. O. Box 12211 Research Triangle Park, NC 27709-2211	10. SPONSORING/MONITORING AGENCY REPORT NUMBER
--	--

11. SUPPLEMENTARY NOTES
The view, opinions and/or findings contained in this report are those of the author(s) and should not be construed as an official Department of the Army position, policy, or decision, unless so designated by other documentation.

12a. DISTRIBUTION / AVAILABILITY STATEMENT Approved for public release; distribution unlimited.	12b. DISTRIBUTION CODE
--	------------------------

13. ABSTRACT (Maximum 200 words)

During the period covered by this report (July 1998 – June 1999), we initiated the application of crystal ion slicing to single-crystal potassium tantalate and strontium titanate. Transport-of-ions-in-matter (TRIM) simulations and ion implantation at 3.8MeV and various dosages were done and removal of the sacrificial layer tested in a number of etchants. Potassium tantalate films have been fabricated and characterized. Sacrificial-layer etching studies in SrTiO₃ for (110) crystals were also carried out.

14. SUBJECT TERMS epitaxial liftoff, ferroelectric, kTaO ₃ , SrTiO ₃ ion slicing, implantation, frequency agile	15. NUMBER OF PAGES 4
	16. PRICE CODE

17. SECURITY CLASSIFICATION OF REPORT UNCLASSIFIED	18. SECURITY CLASSIFICATION OF THIS PAGE UNCLASSIFIED	19. SECURITY CLASSIFICATION OF ABSTRACT UNCLASSIFIED	20. LIMITATION OF ABSTRACT UL
---	--	---	----------------------------------

Epitaxial Liftoff for Fully Single-Crystal Ferroelectric Thin Films

Progress Report (7/1/98-6/30/99) for DARPA/FAME project - Contract N00173-98-1-G014

During the period covered by this report (July 1998 – June 1999), we demonstrated the first crystal ion slicing of single-crystal potassium tantalate and strontium titanate; this constitutes the first fully single crystals thin films made of these materials. Transport-of-ions-in-matter (TRIM) simulations and ion implantation at 3.8MeV and various dosages were done and removal of the sacrificial layer tested in a number of etchants. Potassium tantalate films have been fabricated and characterized and sacrificial-layer etching studies in SrTiO₃ for (110) crystals were also carried out. In addition, a new approach to enhancing ion slicing has been developed using LiNbO₃ samples as model crystals.

Potassium Tantalate

Single-Crystal Film Fabrication

Etch Selectivity and Implantation Dosage

10 μ m-thick films were fabricated at an implantation energy of 3.8MeV and a dosage of 1×10^{16} cm⁻². Other dosage levels were also explored. These experiments showed that exfoliation occurred above the sacrificial layer for levels over 1×10^{16} cm⁻². Below this point, the etch selectivity in diluted HCl increased dramatically between 5×10^{15} cm⁻² and 1×10^{16} cm⁻². The undercut evolution rate ranged from less than a micron per hour at the low end, to 300 μ m/h near the exfoliation threshold. At high dosages the films tended to cleave during etching, possibly as a result of implantation-induced stress. Films up to 0.5 x 1.0 mm² in size have been fabricated so far. The effect of heat treatment on etch selectivity is yet to be investigated.

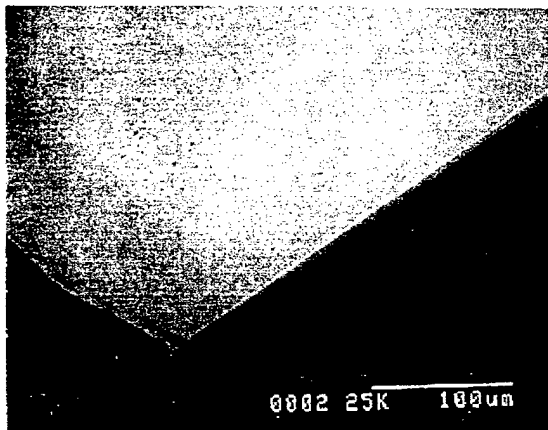


Fig.1(a). KTaO₃ single-crystal film.

Figure 1(a) shows a fully detached KTaO₃ film. While the film's top surface is smooth, its undersurface exhibits regular narrow grooves, less than 0.2 μ m in depth. A sample film's underside is displayed in Fig. 1(b).

Crystallographic Studies

We have initiated a series of crystallographic tests to probe the effect of implantation dosage on crystal structure in KTaO₃. Our aim is to better understand the evolution of strain leading to exfoliation at a threshold dosage of 1×10^{16} cm⁻². X-ray rocking curve measurements have been obtained at three different dosages below threshold. These experiments were done in collaboration with A.Kumar and H. Bakhru at

SUNY Albany. The plots show a pronounced shift in peak position in the implanted region, from $2\theta = 22.5^\circ$ for the unimplanted material, to $2\theta = 22.4^\circ$ at 5×10^{15} cm⁻² dosage. This corresponds to a strain of $\Delta a = 0.018\text{\AA}$ in the lattice parameter a at the implantation layer. Rutherford back scattering (RBS) measurements are also planned in these samples.

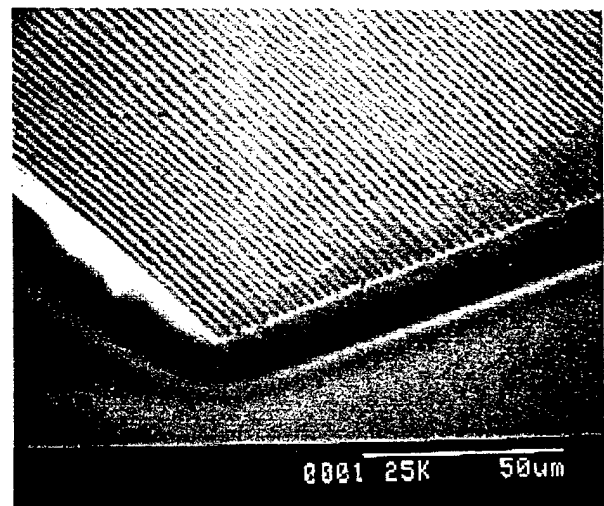


Fig.1(b). Underside of KTaO₃ film.

Capacitance of Free-Standing KTaO_3 Films

It is important to study the dielectric properties of single-crystal thin ferroelectric films, to determine whether they perform as bulk material, or whether deviations are brought about by purely geometrical factors. This is an issue central to the goals of the FAME program. In particular, are these films highly tunable, and are the values of dielectric constant and loss tangent comparable to that of bulk material? To answer these questions, we have started a study of the electrical properties in crystal ion sliced KTaO_3 films in collaboration with R. Guo, A. Bhalla and L.E. Cross of Penn State University. Capacitance measurements have been done initially on films with electrodes placed on top and bottom surfaces using

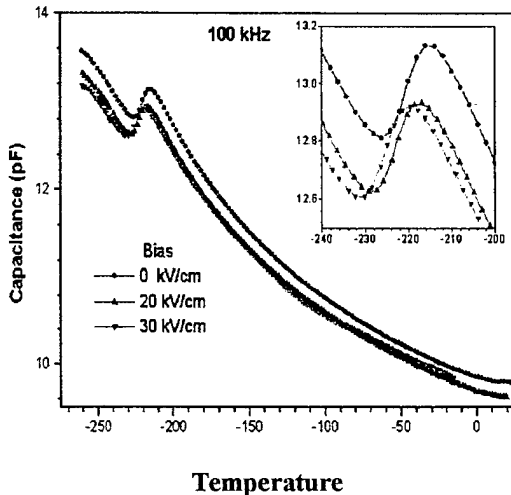


Fig. 2. Capacitance in a KTaO_3 film

Strontium Titanate

Etch Selectivity and Crystal Orientation

(110) crystals were implanted with He^+ at 3.8 MeV, $5 \times 10^{16} \text{ cm}^{-2}$ and $1 \times 10^{17} \text{ cm}^{-2}$. An undercut etch rate of 33 $\mu\text{m/h}$ was observed at the lower dosage and 65 $\mu\text{m/h}$ for $1 \times 10^{17} \text{ cm}^{-2}$ along the (110) direction.

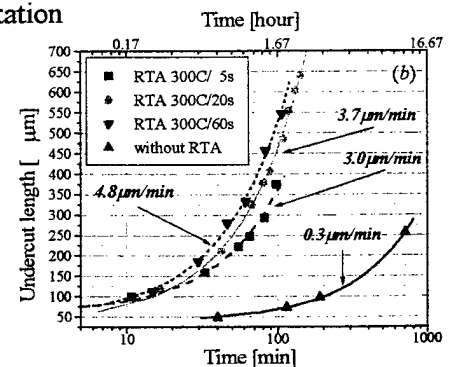
Etch Selectivity Enhancement

LiNbO₃ as a Model Ferroelectric

Rapid thermal treatment has been found to reduce the time needed for film detachment in ferroelectric fields by a factor as large as 100. This makes it possible to fabricate large films ($0.5 \times 1 \text{ cm}^2$) of excellent quality in just a matter of a few hours. Using LiNbO_3 as a model material, two different crystallographic orientations were studied: 1) c-cut and 2) phase-matching-cut for second harmonic generation at $1.55 \mu\text{m}$. Several ionic energies ranging from 3.18 MeV to 3.8 MeV, corresponding to penetration depths 8 to $10 \mu\text{m}$, were used to probe the effect of implantation energy on etch selectivity. Both crystal orientations exhibited significant selectivity enhancement, confirming that heat treatment speeds up film fabrication regardless of sample cut. Secondary ion mass spectroscopy (SIMS) showed that the He^+ distribution of implanted ions evolved toward sharper and narrower spectra. Heat treatment thus yields an increase in internal pressure at the sacrificial layer.

conductive epoxy. Low-temperature data was obtained showing the expected Curie-Weiss behavior, with a Curie point near 20K as in single-crystal bulk material. A secondary peak, observable near 60K in Fig. 2 has been tentatively identified with the presence of strain leading to weak ferroelectric behavior. Further tests are underway, including prior annealing to eliminate residual implantation strain. Presently we are preparing the deposition of aluminum electrodes to improve electrical contact. This is important to get an accurate reading of the absolute value in the dielectric constant. Figure 1(b) shows the film placed on a $1 \mu\text{m}$ -thick photoresist layer to prevent shorting during deposition.

A lower etch rate was measured for (001), indicating crystallographic dependence to the etch selectivity. Some implantation induced cleavage occurred during the etching. Annealing studies are planned.



Talks

1. MRS '99, Materials Research Society Symposium, "Helium-Implantation Induced Layer Detachment and Electrical Properties of Single-Crystal Potassium Tantalate Films," M. Levy, R.M. Osgood, Jr., R. Guo, A. Bhalla, L.E. Cross, A. Kumar, and H. Bakhru, Boston, MA, Nov 29- Dec 3, 1999.
2. MRS '99, Materials Research Society Symposium, "Narrow-Linewidth Yttrium Iron Garnet Films for Heterogeneous Integration," M. Levy, R.M. Osgood, Jr., F. J. Rachford, A. Kumar, and H. Bakhru, Boston, MA, Nov 29-Dec 3, 1999.
3. CLEO/QELS'99 Meeting, "Liftoff and Rapid Processing of 10mm-Thick Single-Crystal LiNbO₃ Films," A.M. Radojevic, M. Levy, and R.M. Osgood, Jr., Baltimore, MD, May 23-28, 1999.
4. City College of NY, Physics Department Colloquium, "Crystal Ion Slicing for Integrated Photonics," Miguel Levy, New York, NY, September 9, 1998.
5. Michigan Technological University, (invited talk), "Crystal Ion Slicing for Integrated Circuit Applications," Miguel Levy, Houghton, MI, September 10, 1998.

Papers

1. A.M. Radojevic, M. Levy, R. M. Osgood Jr., K. Atul, H. Bakhru, C. Tian and C. Evans, "Large Etch-Selectivity Enhancement in the Epitaxial Liftoff of Single-Crystal LiNbO₃ Films," Appl. Phys. Lett. 74, 3197 (1999).
2. M. Levy, R.M. Osgood Jr., R. Liu, L.E. Cross, G. S. Cargill III, A. Kumar, and H. Bakhru, "Fabrication of Single-Crystal Lithium Niobate Films by Crystal Ion Slicing," Appl. Phys. Lett. 73, 2293 (1998).
3. R. Liu, R. Guo, A. S. Bhalla, L.E. Cross, M. Levy, R.M. Osgood Jr., A. Kumar, and H. Bakhru, "Dielectric and Pyroelectric Properties of Crystal Ion Sliced (CIS) LiNbO₃ Thin Films," accepted for publication in Ferroelectrics.
4. R. Liu, R. Guo, A.S. Bhalla, L.E. Cross, M. Levy, and R.M. Osgood, Jr., "Optical Observation of Dynamic Ferroelectric Phase Transition and Static Domain Structures in Crystal Ion Sliced (CIS) LiNbO₃ Film," Materials Letters 39, 264-267 (1999).