

**Carderock Division**  
**Naval Surface Warfare Center**  
West Bethesda, MD 20817-5700

---

---

**CARDIVNSWC-TR-61-99-20 August 1999**

Survivability, Structures, and Materials Directorate  
Technical Report

## **Development of Compliance Expression for Deeply Flawed 1T-WOL Specimen**

by

P.W. Holsberg

R.A. Hays

19991022 067



---

Authorized for public release. Distribution unlimited.

---

**Carderock Division**  
**Naval Surface Warfare Center**  
West Bethesda, MD 20817-5700

---

---

**CARDIVNSWC-TR-61-99-20 August 1999**

Survivability, Structures, and Materials Directorate  
Technical Report

**Development of Compliance Expression for  
Deeply Flawed 1T-WOL Specimen**

by

P.W. Holsberg

R.A. Hays

---

Authorized for public release. Distribution unlimited.

---

# REPORT DOCUMENTATION PAGE

*Form Approved*  
OMB No. 0704-0188

Public reporting burden for this collection of information is estimated to average 1 hour per response, including the time for reviewing instructions, searching existing data sources, gathering and maintaining the data needed, and completing and reviewing the collection of information. Send comments regarding this burden estimate or any other aspect of this collection of information, including suggestions for reducing this burden, to Washington Headquarters services, Directorate for Information Operations and Reports, 1215 Jefferson Davis Highway, Suite 1204, Arlington, VA 22202-4302, and to the Office of Management and Budget, Paperwork Reduction Project (0704-0188), Washington, DC 20503.

1. AGENCY USE ONLY ( <i>Leave blank</i> )	2. REPORT DATE August 1999	3. REPORT TYPE AND DATES COVERED Research and Development	
4. TITLE AND SUBTITLE Development Of Compliance Expression For Deeply Flawed 1T-WOL Specimen		5. FUNDING NUMBERS	
6. AUTHOR(S) P.W. Holsberg and R.A. Hayes		8. PERFORMING ORGANIZATION REPORT NUMBER CARDIVNSWC-TR-61-1999-20	
7. PERFORMING ORGANIZATION NAME(S) AND ADDRESS(ES) NAVAL SURFACE WARFARE CENTER CARDEROCK DIVISION 9500 MACARTHUR BOULEVARD WEST BETHESDA, MD 20817-5700		10. SPONSORING/MONITORING AGENCY REPORT NUMBER	
9. SPONSORING/MONITORING AGENCY NAME(S) AND ADDRESS(ES)  OFFICE OF NAVAL RESEARCH BALLSTON CENTRE TOWER ONE 800 NORTH QUINCY STREET ARLINGTON VA 22217-5167		11. SUPPLEMENTARY NOTES	
12a. DISTRIBUTION/AVAILABILITY STATEMENT Approved for public release; distribution is unlimited.		12b. DISTRIBUTION CODE	
13. ABSTRACT ( <i>Maximum 200 words</i> )  It is difficult to make precise load measurements in 1T-WOL specimens where significant crack extension (the ratio of the final crack length to specimen width exceeds 0.8) has occurred during testing. An alternate method to determine this load would be from compliance calculation using the original, measured crack mouth opening displacement. Such an equation has been derived and verified.			
14. SUBJECT TERMS Stress Intensity Factor    Compliance Steel Stress Corrosion Cracking WOL Specimen		15. NUMBER OF PAGES 13	16. PRICE CODE
17. SECURITY CLASSIFICATION OF REPORT UNCLASSIFIED	18. SECURITY CLASSIFICATION OF THIS PAGE UNCLASSIFIED	19. SECURITY CLASSIFICATION OF ABSTRACT UNCLASSIFIED	20. LIMITATION OF ABSTRACT SAR

## CONTENTS

ABSTRACT .....	1
ADMINISTRATIVE INFORMATION .....	1
INTRODUCTION.....	1
ANALYSIS .....	2
CONCLUSION .....	8
ACKNOWLEDGEMENTS .....	8
REFERENCES.....	9
INITIAL DISTRIBUTION.....	10

## FIGURES

1. 1T WOL Specimen.....	3
2. Compliance Curve for 1T-WOL Specimens .....	8

## TABLES

1. Bolt-Loaded 1T WOL Specimen .....	6
--------------------------------------	---

## ABBREVIATIONS

a	= Crack Length
$a_0$	= Initial Crack Length
$a_f$	= Final Crack Length
B	= Net Specimen Depth ( $\sqrt{BB_N}$ )
$C_1$	= Distance from Load Line to Clip Gage Location (0.65 in.)
E	= Young's Modulus ( $29 \times 10^6$ psi)
$G_I$	= Strain Energy Release Rate
$K_I$	= Stress Intensity Factor
P	= Load
$U_{tot}$	= Total Strain Energy
$U_{no\ crack}$	= Strain Energy with No Crack
$U_{crack}$	= Strain Energy with Crack
$V_B$	= Crack Opening at Load Line
$V_G$	= Crack Opening at Clip Gage Location
W	= Specimen Width (2.55 in.)
$\nu$	= Poisson's Ratio (0.3)

## ABSTRACT

It is difficult to make precise load measurements in 1T-WOL specimens where significant crack extension (the ratio of the final crack length to specimen width exceeds 0.8) has occurred during testing. An alternate method to determine this load would be from compliance calculation using the original, measured crack mouth opening displacement. Such an equation has been derived and verified.

## ADMINISTRATIVE INFORMATION

The Metals Department (Code 61) of the Naval Surface Warfare Center, Carderock Division (NSWCCD) performed this task. The work was sponsored by Dr. John Sedriks, Office of Naval Research, ONR Code 332.

## INTRODUCTION

The modified Wedge Open Load (WOL) test [Novack and Rolfe] utilizes a specimen which is convenient for the determination of the susceptibility of a high strength steel, weldment, or other alloy to stress corrosion or other environmentally assisted cracking. When conducting tests on various product forms (plate, castings, weldments, etc.) in tough, high strength steels, high initial loads are desirable to minimize incubation time. For example, a crack tip stress intensity of 120 ksi $\sqrt{\text{in}}$ . in a 1-inch thick WOL specimen can be achieved with a load of approximately 25,000 lb and a corresponding crack mouth opening of about 0.03 in. If the steel product under test turns out to be very susceptible to cracking during that test, the crack may extend deeply into the specimen, reducing the residual load to the order of hundreds of pounds. The work done by Novack and Rolfe allows calculations of stress intensity and compliance of the WOL specimen to 80% crack through the test ligament,  $a/W \leq 0.8$ , Figure 1. A formula developed by Wilson allows calculation of stress intensity where  $a/W > 0.8$ , but no compliance formula was derived. Problems with corrosion and deposits on the crack surface, together with an uneven crack front profile, can make precise measurement of the after-test loads in the specimen difficult. The after-test loads are usually determined in the same fixtures and machines used to pre-load the specimen, also affecting the precision of such measurements. It would be useful, therefore, to be able to calculate the remaining load.

The objective of this study was to develop and verify an equation for calculating the remaining load by compliance utilizing the initial crack mouth opening.

## ANALYSIS

An expression relating compliance of deeply cracked WOL's to specimen geometry and material properties can be obtained by using the methods [Bucci et al.], and the  $K_I$  expressions [(Novak and Rolfe), (Wilson)] described in the literature.

The total amount of strain energy stored in a WOL specimen, Figure 1, is\*:

$$U_{tot} = U_{no\ crack} + U_{crack} \quad (1)$$

For a WOL specimen, the strain energy contribution of the uncracked specimen is negligible,  $U_{no\ crack} = 0$ . Therefore,

$$U_{tot} = U_{crack} \quad (2)$$

To determine the strain energy due to the crack, using the Griffith approach [Anderson]:

$$G = \frac{\partial U_{crack}}{B \partial a},$$

from which:

$$U_{crack} = B \int_0^a G \partial a.$$

---

\* See List of Abbreviations for explanation of terms.

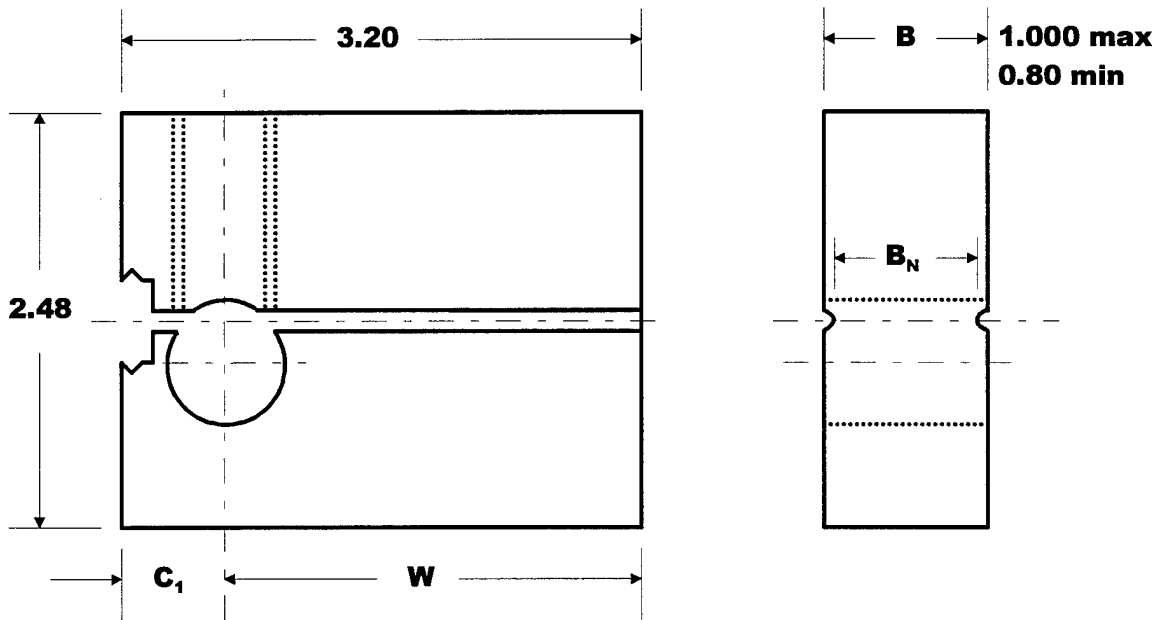


Figure 1. 1T WOL Specimen

Under plane-strain conditions:

$$K_I^2 = \frac{EG}{(1-\nu^2)}, \quad (3)$$

Or

$$G = \frac{(1-\nu^2)}{E} K_I^2. \quad (4)$$

Substituting equation (4) in (2):

$$U_{crack} = \frac{B(1-\nu^2)}{E} \int_0^a K_I^2 da. \quad (5)$$

Substituting equation (5) in (1):

$$U_{tot} = \frac{B(1-\nu^2)}{E} \int_0^a K_I^2 da .$$

We are interested in deeply cracked WOL specimens where  $a/W$  is greater than 0.8. Since there is no expression for  $K_I$  which covers the entire range, we must perform the operation stepwise. Thus:

$$U_{tot} = U_{a/W < 0.8} + U_{a/W > 0.8} \quad (6)$$

For  $a/W < 0.8$ , the expression for  $K_I$  is [Novak and Rolfe]:

$$K_I = \frac{PC_3(a/W)}{Ba^{\frac{1}{2}}} \quad (7)$$

where

$$C_3(a/W) = 30.96(a/W) - 195.8(a/W)^2 + 730.6(a/W)^3 - 1189.3(a/W)^4 + 754.6(a/W)^5$$

Substituting equation (7) in (5) and performing the integration from  $a/W = 0$  to  $a/W = 0.8$  we find:

$$U_{a/W < 0.8} = \frac{(1-\nu^2)P^2}{BE} (157) . \quad (8)$$

For  $a/W > 0.8$ , the expression for  $K_I$  is [Wilson]:

$$K_I = \frac{P(5W + 3a)}{2B(W - a)^{\frac{3}{2}}} \quad (9)$$

Substituting equation (9) in (5) and performing the integration from  $a = 2.04$  ( $a/W = 0.8$ ) to  $a$  we find:

$$U_{a/W>0.8} = \frac{(1-\nu^2)P^2}{4BE} \left[ -587 + \frac{(5+3(a/W))^2}{2(1-(a/W))^2} - 3 \frac{(5+3(a/W))}{(1-(a/W))} - 9 \log(1-(a/W)) \right]. \quad (10)$$

Combining equations (8) and (10) with (6):

$$U_{tot} = \frac{(1-\nu^2)P^2}{4BE} \left[ 41 + \frac{(5+3(a/W))^2}{2(1-(a/W))^2} - 3 \frac{(5+3(a/W))}{(1-(a/W))} - 9 \log(1-(a/W)) \right] \quad (11)$$

Use of Castigliano's theorem [Popov] gives the load point crack opening displacement as:

$$V_B = \frac{\partial U_{tot}}{\partial P}$$

Applying this to equation (11)

$$\frac{BV_B}{P} = \frac{(1-\nu^2)}{2BE} \left[ 41 + \frac{(5+3(a/W))^2}{2(1-(a/W))^2} - 3 \frac{(5+3(a/W))}{(1-(a/W))} - 9 \log(1-(a/W)) \right] \quad (12)$$

Equation (12) relates the load point crack opening,  $V_B$ , to the applied load,  $P$ . However, most experimental compliance measurements done on WOL specimens use a NASA type clip gage which measures the crack opening not at the bolt but at the edge of the specimen. Novak and Rolfe interpolated from the gage displacement to the bolt displacement using the linear relationship:

$$V_B = \frac{aV_G}{a+C_1} \quad (13)$$

Experiments were performed on a WOL specimen where crack opening at the bolt was measured using a linear variable differential transformer mounted on the side of the specimen. A plot of  $V_G$  versus  $V_B$  was made during bolt loading. The results are summarized in Table 1.

**Table 1. Bolt-Loaded 1T WOL Specimen**

Crack Length a, (in.)	a/W	Crack Opening		V <sub>B</sub> /V <sub>G</sub>	a/(a + C <sub>1</sub> )
		V <sub>G</sub> (mils)	V <sub>B</sub> (mils)		
0.930	0.368	25	14.8	0.592	0.589
1.305	0.484	25	16.2	0.648	0.668
1.674	0.662	30	22.5	0.750	0.720
2.033	0.804	35	26.8	0.766	0.757
2.282	0.902	35	27.0	0.771	0.778

Some curvature of the plots was apparent in the first three tests, with V<sub>B</sub>/V<sub>G</sub> ratios as high as 0.7 being observed for the first 0.005 in. of deflection at 0.930 in. crack length. The final two tests, which are of particular interest here, were linear. Therefore, the linear correction, equation (13), can be applied to equation (12):

$$\frac{BV_G}{P} = \frac{(1-\nu^2)\left(\frac{a+C_1}{a}\right)}{2E} \left[ 41 + \frac{(5+3(a/W))^2}{2(1-(a/W))^2} - 3\frac{(5+3(a/W))}{(1-(a/W))} - 9\log(1-(a/W)) \right]. \quad (14)$$

A number of specimens were deeply sawcut and the compliance measured experimentally. Figure 2 shows the results of these tests, together with the values calculated from equation (14) and an empirical formula, equation (15) [Novak and Rolfe]. The calculated values are in excellent agreement, both being slightly higher than the experimental values. The agreement is felt to be satisfactory.

$$P = \frac{EBV_G}{C_6(a/W)} \quad (15)$$

where:

$$C_6(a/W) = \exp[3.453 - 8.097(a/W) + 42.314(a/W)^2 - 64.667(a/W)^3 + 36.845(a/W)^4].$$

Equation (14) must now be applied to a bolt-loaded specimen. Novak and Rolfe assumed a rigid bolt in his analysis and the same will be done here as the error is less than 10% and is conservative. This means that  $V_B$  is constant throughout the test. Examination of equation (13) shows, therefore, as the crack extends (i.e., as  $a$  increases) that  $V_G$  must decrease to maintain  $V_B$  constant. However,  $V_G$  is measured for all specimens on initial loading, so it is convenient to express equation (13) as follows:

$$V_B = \frac{aV_{G0}}{a_0 + C_1} \quad (16)$$

where:

$a_0$  = initial crack length

$V_{G0}$  = initial crack opening at gage location.

Substituting equation (16), rearranging terms, and using  $a_f$  to indicate the crack length at the end of the stress-corrosion test, we find the expression for the remaining load to be:

$$P = \frac{2BEV_{G0} \left( \frac{a_0}{a_0 + C_1} \right)}{(1 - \nu^2) \left[ 41 + \frac{(5 + 3(a_f/W))^2}{2(1 - (a_f/W))^2} - 3 \frac{(5 + 3(a_f/W))}{(1 - (a_f/W))} - 9 \log(1 - (a_f/W)) \right]} \quad (17)$$

Equation (17) can be used to calculate loads in bolt loaded specimens where the final  $a/W > 0.8$ .

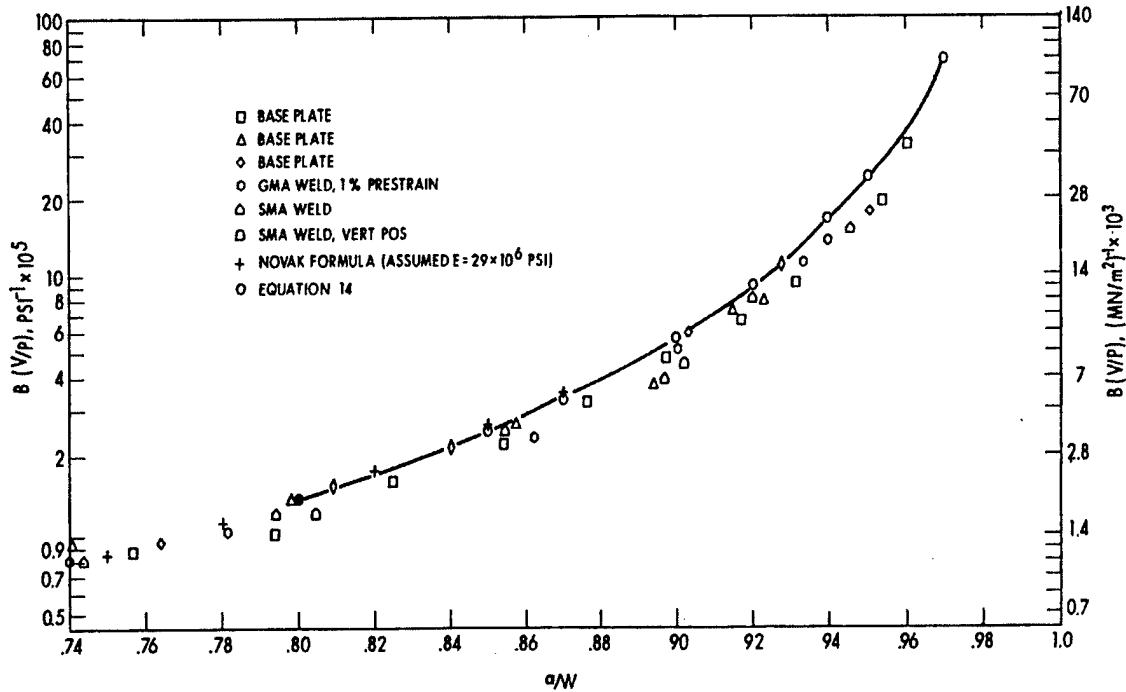


Figure 2. Compliance Curve for 1T-WOL Specimens

## CONCLUSION

An expression, equation (17), has been derived relating the load remaining in a deeply flawed 1T-WOL specimen to the initial crack mouth opening displacement. This compliance relationship was verified by actual testing.

## ACKNOWLEDGEMENTS

The authors gratefully acknowledge the efforts of Dr. James Joyce of the U.S. Naval Academy for his assistance in the mathematical analysis of the deeply flawed WOL specimen.

## REFERENCES

- Bucci, R.J., et al., "J Integral Estimation Procedures," ASTM STP 514, pp. 40-69 (1972).
- Novack, S.R. and S.T. Rolfe, "Modified WOL Specimen for K1scc Environmental Testing," *Journal of Materials*, Vol. 4, No. 3, pp. 701-728 (Sep 1969).
- Wilson, W.K., "Stress Intensity Factor for Deep Cracks in Bending and Compact Tension Specimens," Engineering Fracture Mechanics, Vol. 2, pp. 169-171 (1970).
- Popov, E.P., Mechanics of Materials, pp 404-405, Prentice-Hall, Inc., Englewood Cliffs, NJ (1959).
- Anderson, T.L., Fracture Mechanics, Second Edition, pp. 41-46, CRC Press, Anne Arbor, MI (1995).

## INITIAL DISTRIBUTION

### Copies

- 3** Office of Naval Research  
Ballston Centre Tower One  
800 N. Quincy St.  
Arlington VA 22217-5167
- 1 Code 332 (J. Sedriks)
  - 1 Code 332 (Vasudevan)
  - 1 Code 332 (G. Yoder)

- 2** DTIC

## CENTER DISTRIBUTION

### Copies

- 24** Commander, Naval  
Surface Warfare Center  
Carderock Division  
Bethesda, MD 20084-5000
- 1 Code 011 (Messick)
  - 1 Code 0113
  - 1 Code 0114
  - 1 Code 60 (Morton)
  - 1 Code 603 (Cavallaro)
  - 10 Code 61 (Holsberg)
  - 1 Code 61s (Report Archive)
  - 1 Code 612 (Aprigliano)
  - 1 Code 613 (Ferrara)
  - 4 Code 613 (Hays)
  - 1 Code 614 (Montemarano)
  - 1 Code 615 (DeNale)