

Princeton University
Joseph Henry Laboratories
Department of Physics

TRIBOLUMINESCENCE AND LIGHT AT
DEEP SEA HYDROTHERMAL VENTS

G.T. Reynolds
Technical Report #2

March 28, 2000

ONR Grant N00014-00-1-0010

DISTRIBUTION STATEMENT A
Approved for Public Release
Distribution Unlimited

20000413 014

DTIC QUALITY INSPECTED 2

Triboluminescence and Light at Deep Sea Hydrothermal Vents

“In considering the light seen at the vent orifice it is likely that we have been overly simplistic and the situation is more complex than can be explained in terms of laboratory experience with crystallo, sono, etc. luminescence, or even a combination of these. The situation is much more complex, involving the shear interface of a very hot (and sometimes maybe even supercritical) water plume containing a variety of elements, gases and dissolved compounds emerging at high speed (100 cm/sec) into distinctly cooler sea water under high pressure. At the shear interface we may have a kind of “liquid triboluminescence” involving charge separation or excited states. It may be a liquid analogue of frictional electricity. There may be crystalloluminescence, there may be sonoluminescence, but caused in, or enhanced by gas liquid interfaces and due to Bernoulli flow induced cavitation. Certainly at longer wavelengths we can expect to find characteristic thermal radiation. It is at the shorter wave lengths (visible) that light inconsistent with thermal, light seen by CCD’s and photodetectors is of interest to investigate for evidence of complex physical phenomena. If it has a significant surface component the images might in favorable symmetries of orifice geometry show an intensity profile assuming the emission is not lambertian.

In view of the cost of an expedition and individual dives, it is not unreasonable to suggest a laboratory experiment. The pressures are not excessive, the temperatures are moderate, the plume velocities are reasonable. It should be possible to send “sea water” containing iron sulfides, manganese compounds etc. through a mock up vent and view with a CCD. We have seen evidence for sodium radiation (~ 500 nm) and an occasional hint of radiation ~ 800 nm. Potassium and sulfur ions have emissions in the range 750-950 nm. Excitation mechanisms at the shear interface are distinctly possible.” [1]

Although a completely realistic mock up vent experiment has not been made, several elementary laboratory experiments have yielded suggestive results. One of these has already been reported. [2] There is extensive literature on the structure and components of the chimneys associated with vents. [3-13] These studies, combined with analyses of particles recovered from the plumes of the "black smokers" (performed by the authors of the cited papers), suggest a simple laboratory experiment.

The main minerals found in chimney structures include:

Sphalerite, ZnS; tetrahedral

Wurtzite, ZnS; hexagonal

Pyrite, FeS₂

Pyrohotite, FeS or Fe_{1-x}S_x

Cubanite, CuFe₂S₃

Bornite, Cu₅FeS₄

Manganite, Mn₂O₃ H₂O

Chalcopyrite, CuFeS₂

As a class iron, copper, zinc, sulphides are known to be triboluminescent. [14,15] Samples of these minerals have been obtained from Ward's Geology Supply* in the form of "Testing Chips". The individual chips are probably not pure (not represented as research grade) but are suitable as representative of vent and plume minerals. They were tested using an RCA 8575 photomultiplier, Kiethley 606 Electrometer whose output was recorded on a Soltec chart recorder.

The capability of the system to record the light signal from the triboluminescence of the various minerals was confirmed by fracturing them. Typical results are shown in Figs. 1-3.

*Ward's, PO Box 92912, Rochester, NY 14692-9012.

Further observation of triboluminescence was based on consideration that these materials are found in the plumes of "black smokers". These plumes are well known to be turbulent, both from video records obtained in Alvin dives, and from evidence of the fluctuating visible light recorded by Aliss in a dive at the Jan de Fuca Ridge. [16] Although this turbulence is more severe than can easily be achieved in the laboratory, and also at higher temperatures, temperature gradients, and pressures, a simple experiment was performed to explore the possibility that particles such as those found in plumes might emit light upon collision with each other. To test, a small sample of crushed material was placed in tap water at room temperature. This sample was placed in a glass beaker (100 ml) positioned over the cathode of the photomultiplier, and stirred with a glass rod. Light signals were observed, samples of which are shown in Figures 4 and 5 (control exposures stirring with no minerals in the water, gave no signal).

The nature of the minerals found in chimneys, presumably deposited by precipitation from the vent fluid, and the minerals found as particles in the black smoker plumes, suggest a combination of light producing phenomena that may make a major contribution to the light seen at the vent orifices: crystalloluminescence within the vent, triboluminescence outside the vent. Until recently, the main focus has been on crystalloluminescence outside the vent, and this might be a contributing source, but clearly triboluminescence must also receive consideration. Crystalloluminescence within the vent might be an intense source, the light from which could be (Mie) scattered outside the vent by plume particles, which are themselves exhibiting triboluminescence.

This hypothesis could be required to meet two constraints: spectral analysis of the light, compared to crystallo- and triboluminescence spectra of the minerals considered, and the spatial distribution of the light in the vertical direction of the plumes. As far as the sensitivity of the present detectors indicate, the light is concentrated close to the orifice. Presumably turbulence continues to some degree as the plume rises, and particles continue to collide. However, temperatures drop drastically away from the orifice, and mixing with sea water occurs rapidly, decreasing the concentration of particles and thus the frequency of

collisions. Also, there is reason to believe that the turbulence at the orifice is much greater than that existing even 10 or 20 centimeters away.

There still remain the complex possibilities of chemiluminescence and vapor bubble luminescence to be more thoroughly investigated, but simple experiments show that crystal-loluminescence, triboluminescence, turbulence, and light scattering are reasonable sources for the observed light.

In view of the presence of ZnS in chimneys and plumes it was of interest to investigate the response to pressure of a sample of ZnS deposited on mylar, which was used as a scintillator to convert x-rays to visible lights in early x-ray diffraction studies. [17,18] ZnS(Ag) was deposited to a thickness of 13 mg/cm^2 (about $80 \text{ }\mu\text{m}$ thick). When this sample was subjected to a very slight pressure, the photomultiplier signal was much stronger than those of the minerals tested (Fig. 6).

Acknowledgements

GTR benefited from helpful discussions with Rachel Haymon, Meg Tivey, Karen Von Damm and Richard Feely.

REFERENCES

- [1] Reynolds, G.T., memo dated 11/11/96 to Alan Chave, WHOI.
- [2] Reynolds, G.T., Evidence for vapor bubble luminescence, Technical Report #1, 1/14/00, ONR Grant N00014-00-1-0010.
- [3] Seafloor Hydrothermal Systems, AGU Geophysical Monograph 91 (1995) ed. S.E. Humphries, R.A. Zurenberg, L.S. Mullineau and R.E. Thomson.
- [4] Spiess, F.N. *et al.*, East Pacific Rise: Hot Springs and Geophysical Experiments, *Science* 207, 1427-1433 (1980).
- [5] Haymon, R.M. and M. Kastner, Hot Spring Deposits on the East Pacific Rise at 21° N: preliminary description of mineralogy and genesis. *Earth and Planetary Science Letters* 53, 363-381 (1981).
- [6] Haymon, R.M., Hydrothermal Deposit on the East Pacific Rise at 21° N, Ph.D. Thesis, University of California, San Diego (1982).
- [7] Haymon, R.M., Growth History of Hydrothermal Black Smoker Chimneys, *Nature* 301, 695-698 (1983).
- [8] Feely, R.A. *et al.*, Composition and Dissolution of Black Smoker Particulates from Active Vents on the Juan de Fuca Ridge, *JGR* 92, 11,347-11,363 (1987).
- [9] Feely, R.A., *et al.*, Distribution and Composition of Hydrothermal Plume Particles from the ASHES Vent Field at Axial Volcano, Juan de Fuca Ridge, *JGR* 95, 12,855-12,873 (1990).
- [10] Tivey, M.K., Modeling Chimney Growth and Associated Fluid Flow at Seafloor Hydrothermal Vent Sites in AGU Monograph 91 (ref. 3) pp. 158-177 (1995).
- [11] Feely, R.A., *et al.*, Hydrothermal Plume Particles and Dissolved Phosphate over the Superfast-spreading Southern East Pacific Rise, *Geochem. and Cosmochim. Acta* 60,

2297-2323 (1996).

- [12] Tivey, M.K., How to Build a Black Smoker Chimney, *Oceanus* 41, 22-26 (1998).
- [13] Baron, S.R., Hydrothermal Vent Precipitates: a study of temporal and geographic variations in black smoker particles and chimneys from 9°-10° North, East Pacific Rise. Ph.D. Thesis, University of California, Santa Barbara 1998.
- [14] Harvey, E.N., A History of Luminescence, American Philosophical Society, Chapter X (1957).
- [15] Walton, A.J., Triboluminescence, *Advances in Physics* 26, 887-948 (1977).
- [16] White, S.N. *et al.*, Variations in Ambient Light Emission from Black Smokers and Flange Pools on the Juan de Fuca Ridge, *Geophys. Res. Lett.*, in press,, 2000.
- [17] Reynolds, G.T., X-ray Image Intensification, Technical Report #8, Princeton University, November 25, 1968.
- [18] Reynolds, G.T., *et al.*, High Sensitivity Image Intensifier Detector for X-ray Diffraction Studies, *Rev. Sci. Inst.* 49, 1241-1249 (1978).

Figure Captions

Figure 1 Photomultiplier response of a Sphalerite chip subjected to light taps, resulting in fracture. The sharp initial positive spike is the result of the pm voltage turn on. The final negative spike occurs when the voltage is turned off.

Figure 2 Response of Chalcopyrite chip to light taps, resulting in fracture.

Figure 3 a) Response of Bornite chip.

b) Control.

Figure 4 a) Response of a number of small particles of Sphalerite in water, stirred with a glass rod.

b) Control.

Figure 5 Response of Chalcopyrite to stirring.

a) Control.

b) Small particles.

c) Larger chip added.

Figure 6 Response of ZnS(Ag) to very light finger pressure.

a) Chart paper not in motion.

b) Chart paper in motion as in Figs. 1-5.

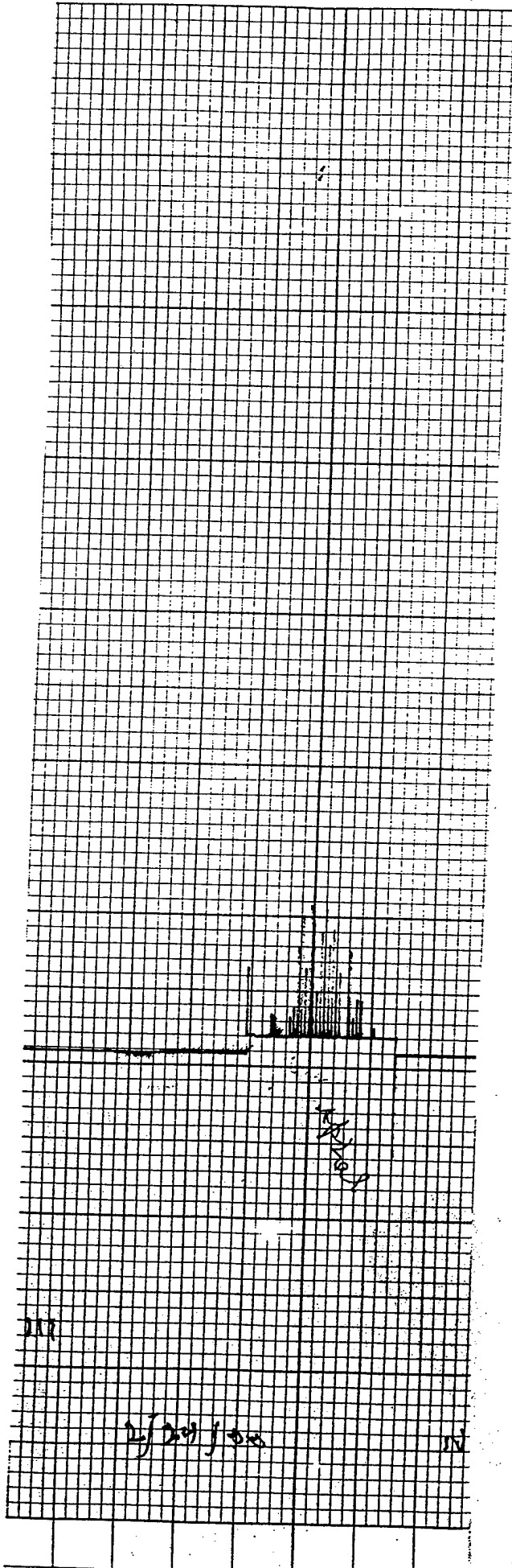


Figure 1

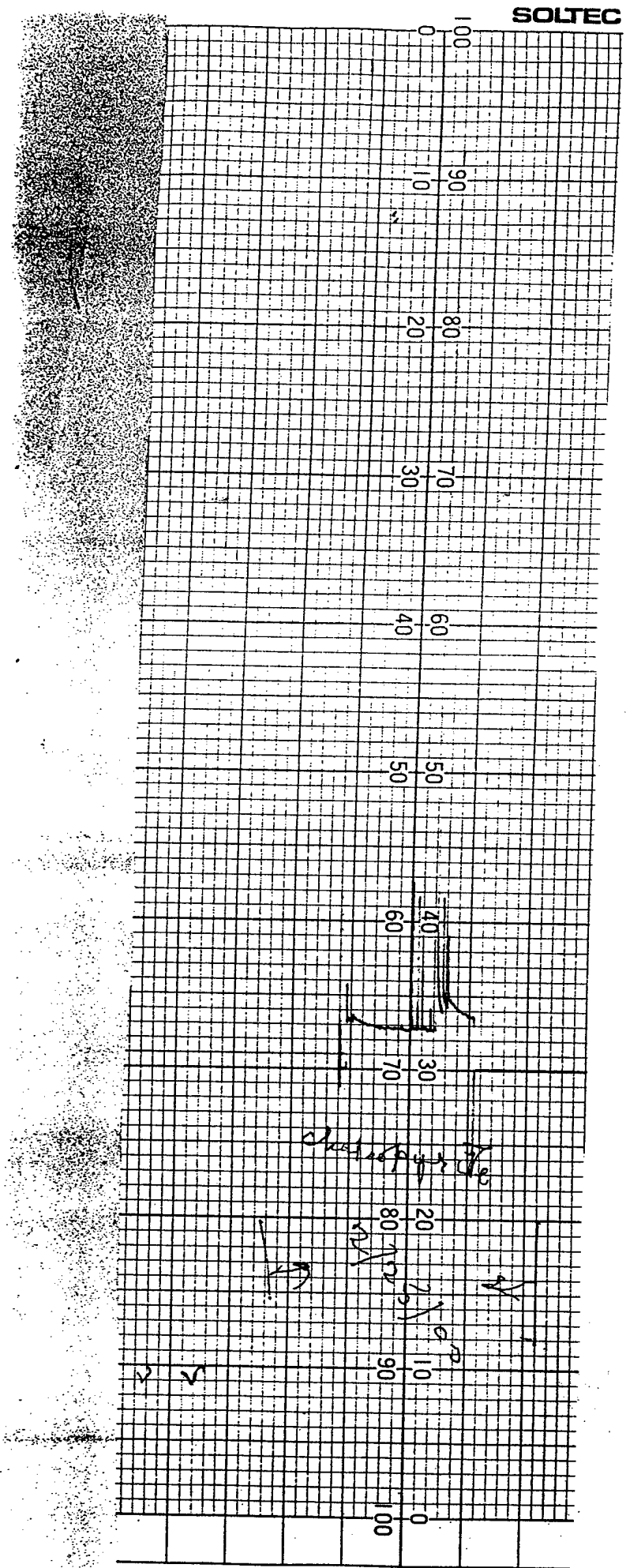


Figure 2

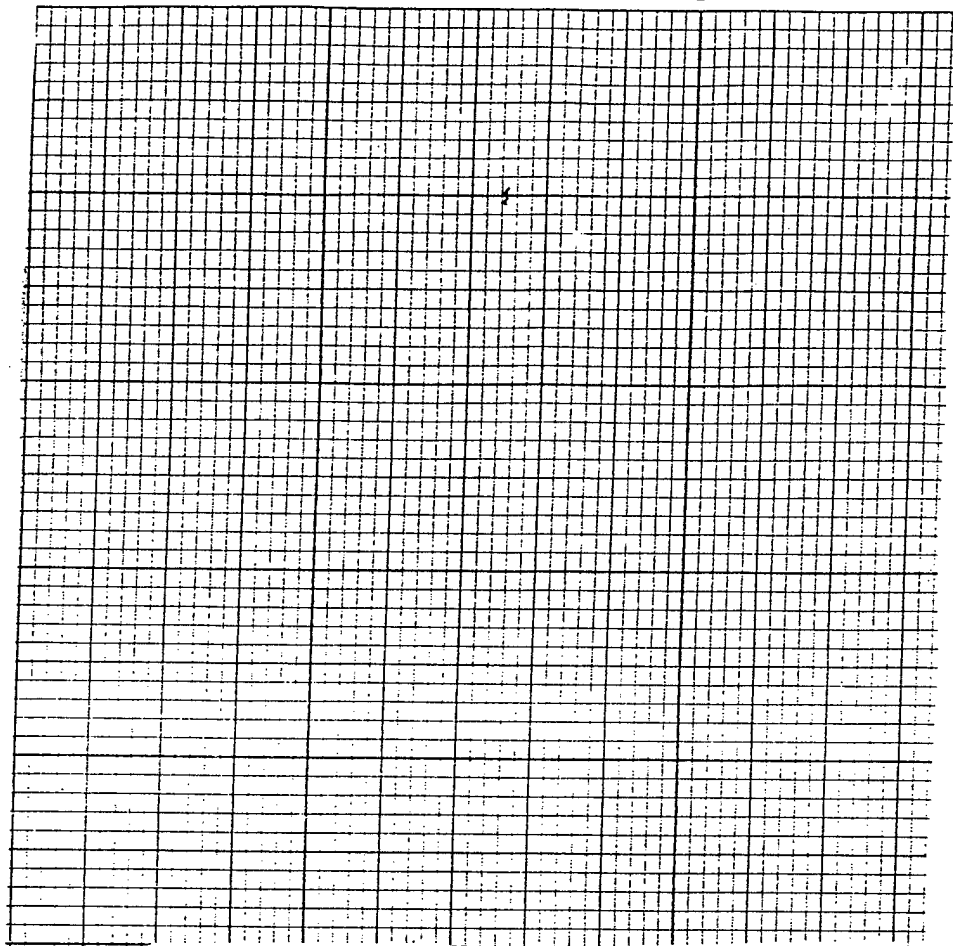


Figure 3a

Figure 3b

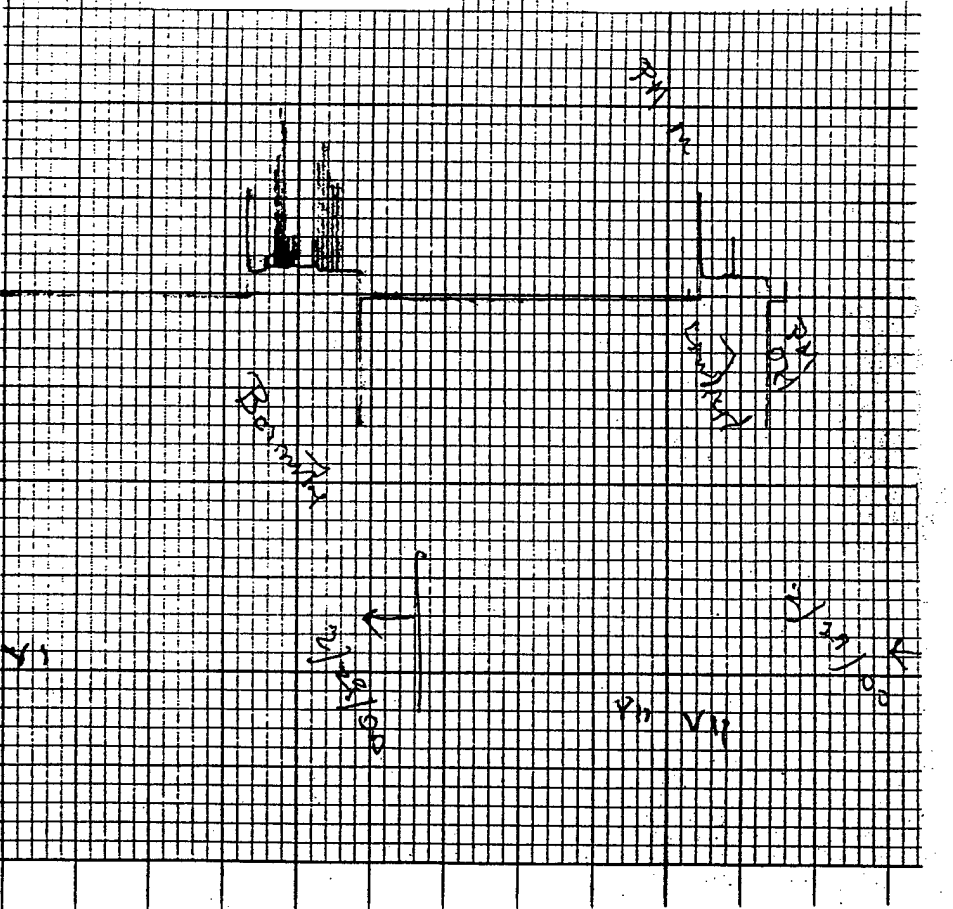


Figure 4a

Figure 4b



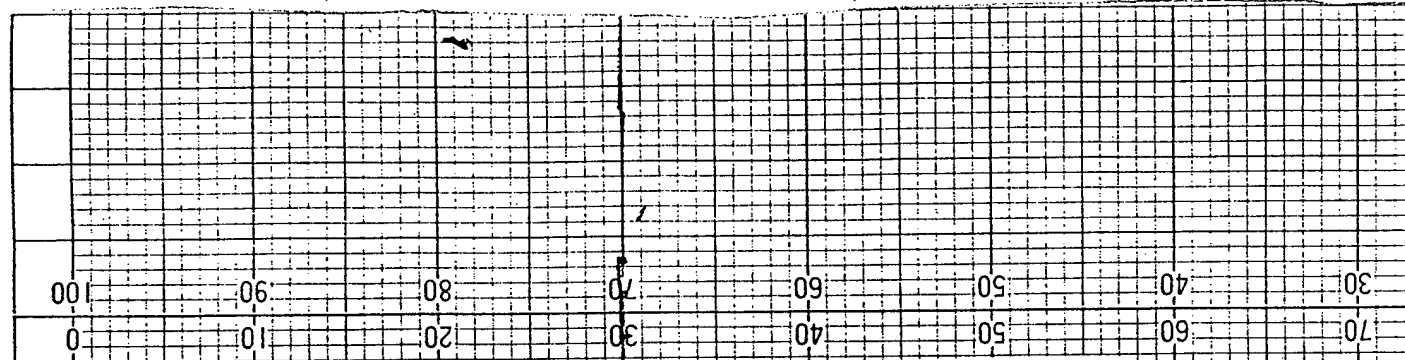


Figure 5a

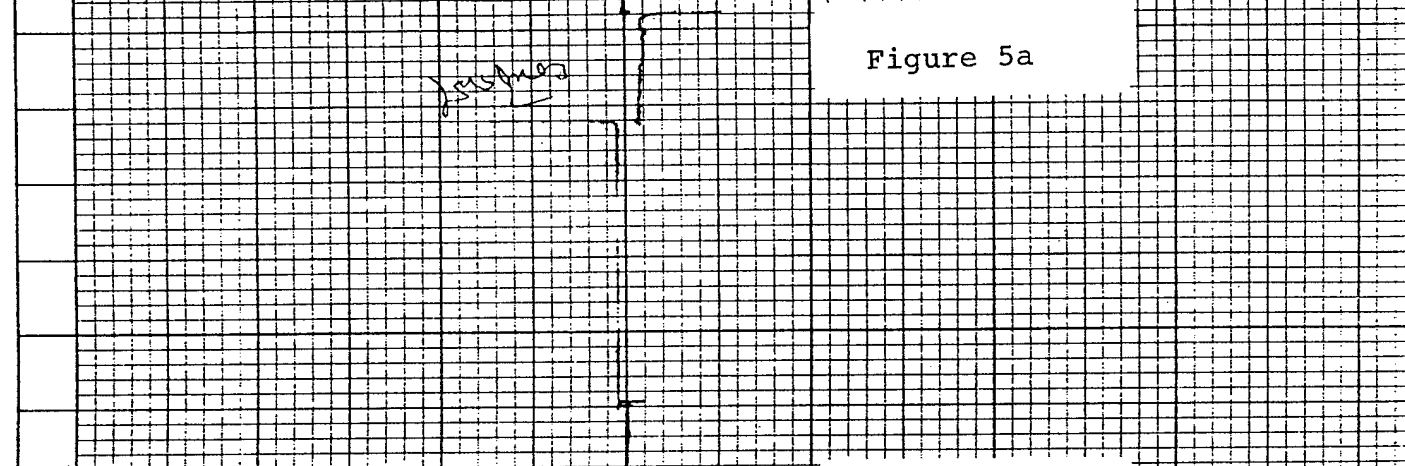


Figure 5b

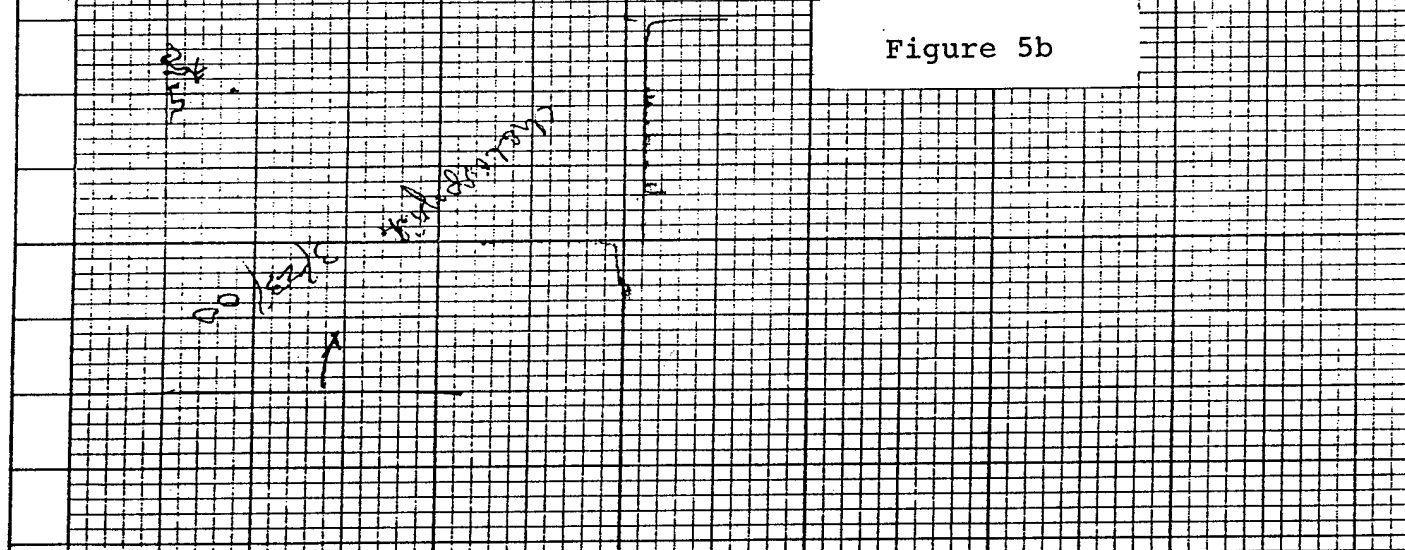


Figure 5c

1
2
3
4
5
6
7
8
9
10
11
12
13
14
15
16
17
18
19
20
21
22
23
24
25
26
27
28
29
30
31
32
33
34
35
36
37
38
39
40
41
42
43
44
45
46
47
48
49
50
51
52
53
54
55
56
57
58
59
60
61
62
63
64
65
66
67
68
69
70
71
72
73
74
75
76
77
78
79
80
81
82
83
84
85
86
87
88
89
90
91
92
93
94
95
96
97
98
99
100

REPORT DOCUMENTATION PAGE

Form Approved
OMB No. 0704-0188

Public reporting burden for this collection of information is estimated to average 1 hour per response, including the time for reviewing instructions, searching data sources, gathering and maintaining the data needed, and completing and reviewing the collection of information. Send comments regarding this burden estimate or any other aspect of this collection of information, including suggestions for reducing this burden to Washington Headquarters Service, Directorate for Information Operations and Reports, 1215 Jefferson Davis Highway, Suite 1204, Arlington, VA 22202-4302, and to the Office of Management and Budget, Paperwork Reduction Project (0704-0188) Washington, DC 20503.

PLEASE DO NOT RETURN YOUR FORM TO THE ABOVE ADDRESS.

1. REPORT DATE (DD-MM-YYYY) 28-03-2000		2. REPORT DATE Technical.		3. DATES COVERED (From - To) 1/00 - 4/00	
4. TITLE AND SUBTITLE Triboluminescence and Light at Deep Sea Hydrothermal Vents.				5a. CONTRACT NUMBER PR -- 00PR00102-00	
				5b. GRANT NUMBER N00014-00-1-0010	
				5c. PROGRAM ELEMENT NUMBER	
6. AUTHOR(S) Reynolds, George T.				5d. PROJECT NUMBER	
				5e. TASK NUMBER	
				5f. WORK UNIT NUMBER	
7. PERFORMING ORGANIZATION NAME(S) AND ADDRESS(ES) The Trustees of Princeton University Office of Research, Project Administration Fifth Floor, New South Building Princeton, NJ 08544-0636				8. PERFORMING ORGANIZATION REPORT NUMBER PHYS-2	
9. SPONSORING/MONITORING AGENCY NAME(S) AND ADDRESS(ES) Office of Naval Research Region Office Boston 495 Summer Street, Room 627 Boston, MA 02210-2109				10. SPONSOR/MONITOR'S ACRONYM(S) ONR (73)	
				11. SPONSORING/MONITORING AGENCY REPORT NUMBER	
12. DISTRIBUTION AVAILABILITY STATEMENT APPROVED FOR PUBLIC RELEASE.					
13. SUPPLEMENTARY NOTES					
14. ABSTRACT Triboluminescence has been well known for many minerals when fractured. Samples of minerals found in vent chimneys and plumes were fractured & the light recorded by means of a photomultiplier. Light was also observed when a sample of small particles in a beaker of water was stirred, indicating that these minerals may emit light in a turbulent vent plume.					
15. SUBJECT TERMS Triboluminescence in vents.					
16. SECURITY CLASSIFICATION OF:			17. LIMITATION OF ABSTRACT	18. NUMBER OF PAGES	19a. NAME OF RESPONSIBLE PERSON
a. REPORT	b. ABSTRACT	c. THIS PAGE			19b. TELEPHONE NUMBER (Include area code)
U	U	U	UU	14	Geo. T. Reynolds (609) 258-4384