

## Low-Speed Wind Tunnel Tests on a Diamond Wing High Lift Configuration

Terence A. Ghee\*  
 NAVAIR, Code 4321  
 Bldg. 2187, Suite 1320B  
 Patuxent River, MD 20670-1906

Dr. Nigel J. Taylor†  
 DERA Farnborough  
 Kuchemann Building X80, Ively Road  
 Farnborough Hampshire GU 14 0LX, UK

On modern military air vehicles, high lift systems are used to improve take-off and landing performance. For naval air vehicles, an improvement in the lift coefficient of a landing or approach configuration allows for arrested landings at reduced speeds or the ability to carry more weight back to the ship. For conventional take-off or landing (CTOL), improved lift to drag ratios allow for shorter take-off runs or greater payload capacity.

On a typical slotted high lift system, a hinged-shroud, in conjunction with a trailing edge flap is used to create a slot. The slot allows a jet, powered by the wing lower-surface high pressure, to energize the upper surface flow and cause an increase in lift as compared to a simple hinged flap system. The slot is set by varying gap and overhang, see Fig. 1. Gap is defined as the radius from the trailing edge of the shroud to a tangent point on the trailing edge flap. Overhang is defined as the horizontal distance from the trailing edge of the shroud to the leading edge of the trailing edge flap. The aerodynamic complexity of the high lift system makes design difficult. With that in mind, a cooperative international program was created to test two (2) representative military high lift configurations and utilize computational fluid dynamics (CFD) to understand the flow physics. In addition, it was hoped to be able to achieve the capability to use CFD as a future design tool. Therefore, the wind tunnel testing was conducted to understand the flow physics, optimize gap and overhang on selected configurations, and be used as a CFD validation data base.

A test of a high lift system on a representative military wing was conducted in the NASA Langley Research Center National Transonic Facility (NTF) wind tunnel. A sketch of the model is shown in Fig. 2. A photograph of the model installed in the tunnel is shown in Fig. 3. The testing was under the auspices of The Technical Co-operation Program (TTCP), a multi-national research collaboration program, and included NASA, DERA (UK), US Navy, and USAF. In addition to understanding the basic flow physics of military high-lift configurations, the test was also conducted for CFD validation.

The NTF wind tunnel is a cryogenic transonic facility at Langley Research Center and has an 8-foot by 8-foot test section. For this test, the normally slotted floor and ceiling were covered to form a solid wall tunnel. The tests were principally conducted at  $M=0.2$  for Reynolds numbers of

\* Aerodynamicist, ph: 301 342 8536 FAX: 301 342 8588, [gheeta@navair.navy.mil](mailto:gheeta@navair.navy.mil), Senior Member, AIAA

† Senior Scientist, ph: 44 1252 345110, FAX: 44 1252 395275, [njtaylor@dera.gov.uk](mailto:njtaylor@dera.gov.uk), Member, AIAA

7.7, 3.8, and 1.4 million per foot (or 24.2, 11.9, and 4.4 million based on mean aerodynamic chord). The angle-of-attack range was  $-5$  to  $24$  degrees. Mach and Reynolds number sweeps were also conducted to assess the effect on the aerodynamic properties. Tunnel force and moment data was corrected using a classical methodology (with out a separated wake correction) and using the WICS methodology.

The Diamond Wing, shown in Figs. 2 and 3, consisted of a semi-span, 40-degree leading and trailing edge-swept, thin wing. The semi-span was 2.6927 feet, see Fig. 2. Gap and overhang variation studies were conducted for shroud/trailing edge flap settings of 23/35, 17/35, and 0/20. The gap and overhang were optimized for the approach (23/35) and take-off (0/20) configurations. Leading edge flap angle was fixed at 22 degrees. Comparisons were also made with the wing with a 20 degree hinged flap and the wing in a clean configuration. Approximately 60 distinct gap/overhang conditions were tested on the three configurations. The gap was variable from 0.5 to 2.5% $c$  and overhang was variable from  $-1.0$  to 5.0% $c$  in increments of 0.5% $c$ . The fuselage was a generic design with a large flat region such that the flap/fuselage juncture could be sealed. A labyrinth seal and stand-off plate were used to reduce the effect of the wind tunnel boundary layer on the wing flow structure.

The high lift model was instrumented with approximately 450 pressure taps. The flap consisted of 132 pressure orifices. The fuselage incorporated approximately 80 pressure taps on the surface. Force and moment measurements were obtained with an external balance. In addition, the tunnel walls were heavily instrumented to record the surface pressure. Fluorescent mini-tuft data were acquired for the approach and takeoff configuration, as well as the maneuver (20 degree hinged flap) and cruise (clean) wings. Chemical sublimation studies were conducted on the approach configuration at 1atm for angles-of-attack of 8, 10, 12, and 14 degrees. Video deformation data was acquired on the approach configuration to determine the extent of the flap and shroud deflections, and thus the change in gap, under aerodynamic load.

The gap/overhang optimization was conducted to maximize the local lift coefficient at a representative range of angle-of-attack for the approach configuration and maximize the lift-over-drag ratio for the take-off configuration. The test evaluated the effect of trailing edge flap angle, shroud angle, high lift system effectiveness versus simple hinged flap, Reynolds and Mach number effects, and flap end seal effects in addition to the gap and overhang parametrics.

The paper will present an overview of the principal test results with selected data from other portions of the test. An uncertainty estimate will be provided along with an assessment of the test technique lessons learned.

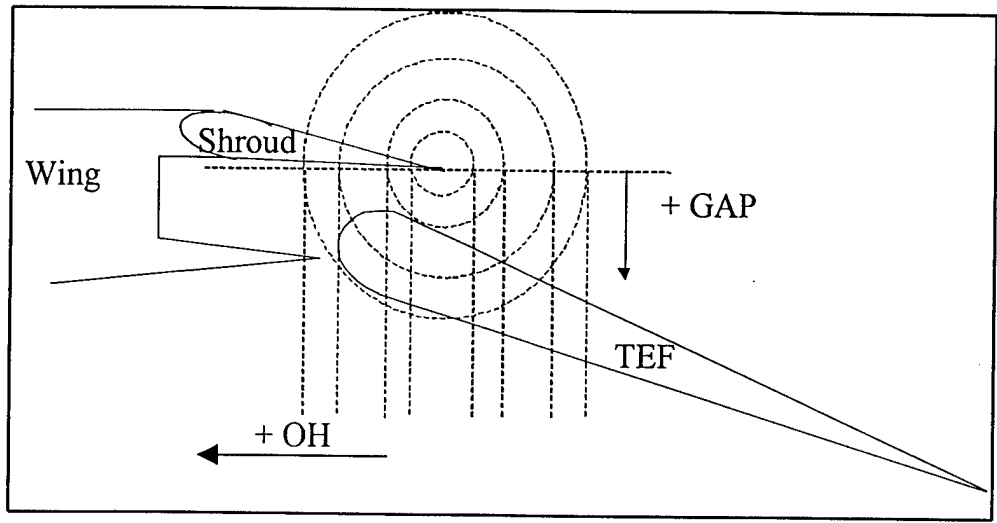
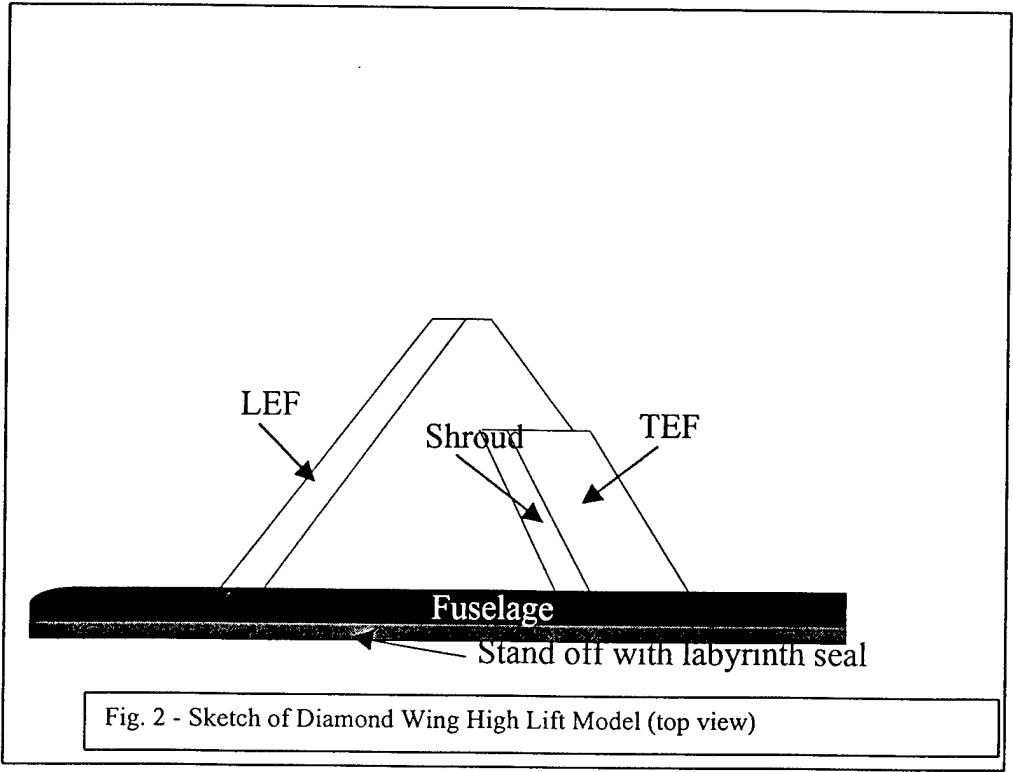


Figure 1. Sketch illustrating shroud, trailing-edge-flap (TEF), gap and overhang (OH).



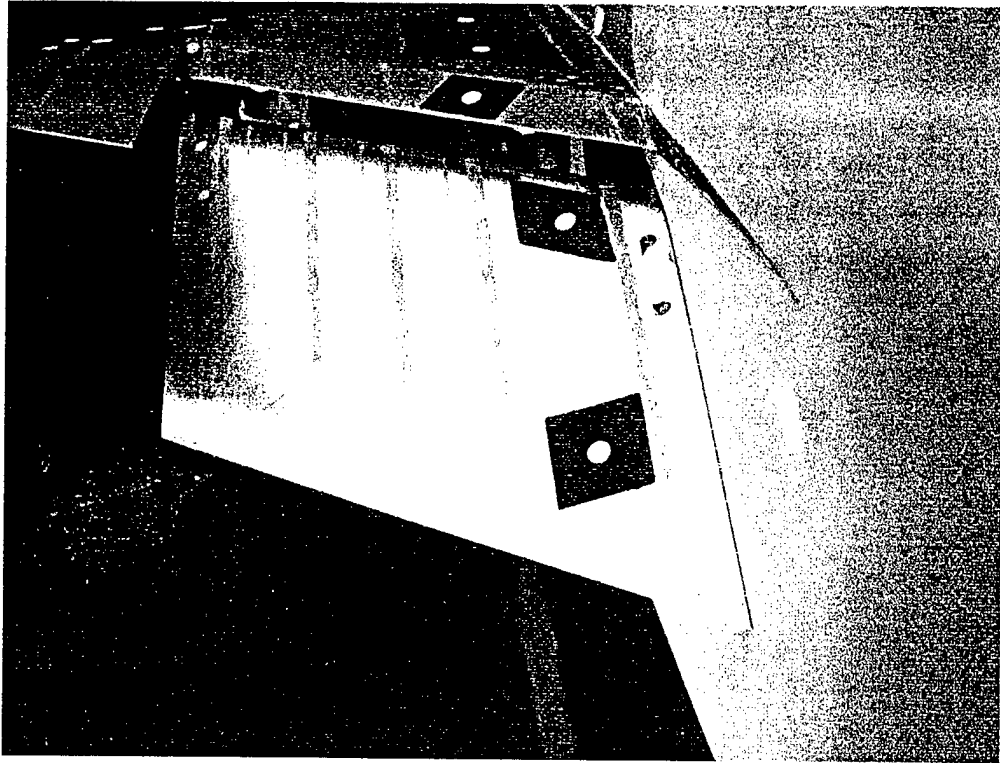


Fig. 3 – Diamond Wing High Lift system (looking upstream)

REPORT DOCUMENTATION PAGE			Form Approved OMB No. 0704-0188		
Public reporting burden for this collection of information is estimated to average 1 hour per response, including the time for reviewing instructions, searching existing data sources, gathering and maintaining the data needed, and completing and reviewing this collection of information. Send comments regarding this burden estimate or any other aspect of this collection of information, including suggestions for reducing this burden, to Department of Defense, Washington Headquarters Services, Directorate for Information Operations and Reports (0704-0188), 1215 Jefferson Davis Highway, Suite 1204, Arlington, VA 22202-4302. Respondents should be aware that notwithstanding any other provision of law, no person shall be subject to any penalty for failing to comply with a collection of information if it does not display a currently valid OMB control number. PLEASE DO NOT RETURN YOUR FORM TO THE ABOVE ADDRESS.					
1. REPORT DATE		2. REPORT TYPE Professional Paper		3. DATES COVERED	
4. TITLE AND SUBTITLE  Low-Speed Wind Tunnel Tests on a Diamond Wing High Lift Configuration			5a. CONTRACT NUMBER		
			5b. GRANT NUMBER		
			5c. PROGRAM ELEMENT NUMBER		
6. AUTHOR(S)  Terence Ghee Dr. Nigel Taylor			5d. PROJECT NUMBER		
			5e. TASK NUMBER		
			5f. WORK UNIT NUMBER		
7. PERFORMING ORGANIZATION NAME(S) AND ADDRESS(ES)  Naval Air Warfare Center Aircraft Division 22347 Cedar Point Road, Unit #6 Patuxent River, Maryland 20670-1161			8. PERFORMING ORGANIZATION REPORT NUMBER		
9. SPONSORING/MONITORING AGENCY NAME(S) AND ADDRESS(ES)  Naval Air Systems Command 47123 Buse Road Unit IPT Patuxent River, Maryland 20670-1547			10. SPONSOR/MONITOR'S ACRONYM(S)		
			11. SPONSOR/MONITOR'S REPORT NUMBER(S)		
12. DISTRIBUTION/AVAILABILITY STATEMENT  Approved for public release; distribution is unlimited.					
13. SUPPLEMENTARY NOTES					
14. ABSTRACT  On modern military air vehicles, high lift systems are used to improve takeoff and landing performance. For naval air vehicles, an improvement in the lift coefficient of a landing or approach configuration allows for arrested landings at reduced speeds or the ability to carry more weight back to the ship. For conventional takeoff or landing (CTOL), improved lift to drag ratios allow for shorter takeoff runs or greater payload capacity.					
15. SUBJECT TERMS  conventional takeoff or landing (CTOL)					
16. SECURITY CLASSIFICATION OF:			17. LIMITATION OF ABSTRACT	18. NUMBER OF PAGES	19a. NAME OF RESPONSIBLE PERSON
a. REPORT	b. ABSTRACT	c. THIS PAGE			Terence Ghee
Unclassified	Unclassified	Unclassified	Unclassified	4	19b. TELEPHONE NUMBER (include area code) (301) 342-8536

UNIC QUALITY INSPECTED 4