

ARMY RESEARCH LABORATORY



Determination of Occupational Exposure to Depleted Uranium Based on Inductively Coupled Plasma Mass Spectrometry

Phillip R. Boyd, T. Wayne Tardiff, John W. Ejnik,
Alistair J. Carmichael, Matthew M. Hamilton, Melissa McDiarmid,
and Katherine Squibb

ARL-TR-2109

May 2000

Approved for public release; distribution unlimited.

DTIC QUALITY INSPECTED 4

20000612 017

The findings in this report are not to be construed as an official Department of the Army position unless so designated by other authorized documents.

Citation of manufacturer's or trade names does not constitute an official endorsement or approval of the use thereof.

Destroy this report when it is no longer needed. Do not return it to the originator.

Army Research Laboratory

Adelphi, MD 20783-1197

ARL-TR-2109

May 2000

Determination of Occupational Exposure to Depleted Uranium Based on Inductively Coupled Plasma Mass Spectrometry

Phillip R. Boyd, T. Wayne Tardiff

Sensors and Electron Devices Directorate, ARL

John W. Ejnik, Alistair J. Carmichael, Matthew M. Hamilton

Armed Forces Radiobiology Research Institute

Melissa McDiarmid, Katherine Squibb

University of Maryland School of Medicine

Abstract

We used a simple method based on inductively coupled plasma mass spectrometry (ICP-MS) to determine the isotopic composition of uranium in urine at levels that indicate occupational exposure to depleted uranium (DU). DU exposure is indicated by a range for ^{235}U between 0.72 and 0.2 percent. Using the ICP-MS isotopic ratio method, we determined the percentage of ^{235}U in a series of urine samples based on the measured intensities of the ^{235}U and ^{238}U ions. In this study, urine samples from 12 individuals suspected of having been exposed to DU were processed by the Armed Forces Radiobiology Research Institute (AFRRI) and then analyzed by ICP-MS at the Army Research Laboratory for the presence of DU. We achieved a lower detection limit of 14 ng L^{-1} in the original urine samples, which is at or near uranium levels in the general population (not occupationally exposed to uranium). We concluded that this approach can be used to determine the percentage of ^{235}U in urine samples characterized by higher than normal uranium levels, and thus whether occupational exposure to DU has occurred.

Contents

1. Introduction	1
2. Experiment	3
3. Results and Discussion	6
4. Conclusions	9
References	10
Distribution	13
Report Documentation Page	15

Figures

1. ELAN 6000 inductively coupled plasma mass spectrometer	3
2. Cutaway showing internal components of ELAN 6000	4
3. Major hardware components of ELAN 6000 ICP-MS	4
4. Schematic of components of ELAN 6000 ICP-MS	5
5. Percentage of ^{235}U in 12 urine samples measured by ICP-MS	7
6. Percentage DU calculated from percentage of ^{235}U present in urine samples	8

Tables

1. Operating conditions used with ELAN-6000 ICP-MS for isotopic ratio measurement of uranium $\text{U}^{235}/\text{U}^{238}$ in urine	5
2. Raw uranium data from urine samples measured by ICP-MS	7

1. Introduction

The Gulf War conflict was the first major combat situation involving the widespread use of depleted uranium (DU), both in armor-piercing munitions and for enhancing the armor protection and survivability of U.S. tanks. The possible exposure of military personnel to DU during this conflict renewed interest in toxicology studies involving uranium and in assays for DU [1]. In 1993, the Office of the Army Surgeon General identified a number of soldiers who had been wounded by friendly fire and possibly exposed to DU. Investigations of the health effects of DU are currently being carried out at the Armed Forces Radiobiology Research Institute (AFRRI) and the Lovelace Respiratory Research Institute (LRRI). In support of the research efforts at AFRRI, we used inductively coupled plasma mass spectrometry (ICP-MS) to determine the isotopic ratios of uranium from the urine of 12 subjects currently enrolled in the Baltimore Veterans Administration Medical Center follow-up program.

Techniques commonly used to assay uranium in environmental, geological, and biological samples include fluorescence-type techniques such as laser-induced fluorescence (LIF) [2–8] and kinetic phosphorescence analysis (KPA). Other methods that can be applied to the analysis of uranium in urine- and serum-type samples include α -spectroscopy [9–11], spectrophotometry [12], neutron activation analysis (NAA) [13], inductively coupled plasma atomic emission spectroscopy (ICP-AES) [14], and ICP-MS [15–28]. Most of the indicated techniques require elaborate sample preparation procedures or extended data collection times, or they are subject to interference problems [27]. The LIF technique is quite useful for the determination of occupational exposure to uranium based on urine sampling, but has the drawback of an ultimate detection limit in the low nanograms per milliliter (parts per billion, ppb) range. Uranium concentrations in urine samples from the normal or unexposed population are typically in the 6 to 30 ng L⁻¹ or parts per trillion (ppt) range. The NAA technique is characterized by excellent detection limits for uranium, but requires extensive sample preparation, is very labor intensive, and is not very cost effective [23]. ICP-MS and α -spectroscopy are the only techniques from this group that allow for the determination of isotopic ratios. However, in order to produce accurate results for uranium levels below 25 ppt, α -spectroscopy requires extended data collection times, while ICP-MS requires much shorter sampling times and also exhibits an instrumental detection level (IDL) of less than 1 ppt for uranium. In addition, following sample preparation, ICP-MS analyses can be accomplished in sampling times on the order of a few minutes. We therefore selected the ICP-MS isotopic ratio approach as the method of choice to assess occupational exposure to DU.

Naturally occurring uranium contains 0.72 wt.% ^{235}U , while DU typically assays for ^{235}U at 0.2 to 0.25 wt.%. A quick survey technique based on isotopic ratios would provide a useful tool for assessing whether uranium detected in bodily fluids or tissue samples was from naturally occurring sources, such as drinking water and food stocks, or from DU contamination. If the measured $^{235}\text{U}/^{238}\text{U}$ ratio indicates ^{235}U less than 0.72 wt.%, then DU exposure is verified.

We used a Perkin Elmer ELAN 6000 ICP-MS* operated in the isotopic ratio analysis mode to determine the relative concentrations of ^{235}U and ^{238}U ions in a series of urine samples. Since the obtained analytical results are expressed as the ratio of the measured intensity of the ^{235}U ion to the measured intensity of the ^{238}U ion, no standardization was required. The precision of this approach can range from a few percent to as low as 0.1 percent, depending on the ratio of the isotopes to be determined and the total ion counts obtained during the measurement. The ELAN 6000 ICP-MS uses an argon plasma as an ionization source and a quadrupole to mass analyze the ions produced. It can provide quantitation for about 80 percent of the elements in the periodic table, with typical detection limits below 1 ppt or 1 ng L^{-1} . The dynamic range is over six orders of magnitude.

In this work, we used a quick-turnaround method based on ICP-MS to measure the isotopic ratio of uranium from urine samples to validate the onset of occupational exposure to DU.

*Perkin Elmer Corporation, 761 Main Avenue, Norwalk, CT 06859-0012.

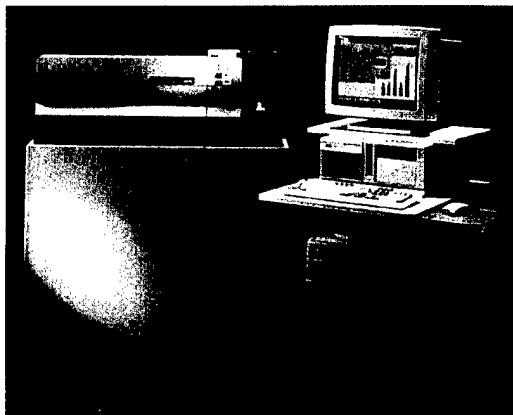
2. Experiment

We determined the uranium isotopic composition of 12 urine samples from individuals enrolled in the DU follow-up program [1] at the Baltimore Veterans Administration Medical Center using a Perkin Elmer ELAN 6000 ICP-MS (fig. 1 to 4). Table 1 shows the operational parameters of the ICP-MS used in these measurements.

We operated the ELAN 6000 in a continuous aspiration mode using a Gilson peristaltic pump. We used the dual detector and autolens modes of operation with a DU standard to reduce mass bias effects and obtain ratio correction factors for the ELAN software.

The total concentration of uranium in the urine was first determined at AFRRRI with a Chemchek Instruments model KPA-11 kinetic phosphorescence analyzer equipped with a Gilson 222 sample changer and 401 dilutor autosampler. (The principles of KPA have been described in detail elsewhere [7,23,30].) The urine samples for the ICP-MS analysis were processed in 20-mL glass scintillation vials. Samples were initially dried in an oven at 120 °C for 24 hr. They were then dry ashed in a muffle furnace at 300 °C for 24 hr, followed by a 450 °C dry-ash step for 4 hr. After dry ashing, samples were wet ashed with 2 mL of concentrated nitric acid and 0.5 mL of 30-percent hydrogen peroxide. The mixture was heated to just below boiling until evaporation was complete. The residues were cooled and wet ashed three more times in the same manner. The samples were further dry ashed at 450 °C for 4 hr, and then wet ashed two more times with 2 mL of concentrated nitric acid and 0.5 mL of hydrogen peroxide, as described above. At the end of this process, the samples consisted of a white residue that was dissolved in 1 molar nitric acid for ICP-MS analysis. We determined the isotopic composition of uranium by measuring the $^{235}\text{U}/^{238}\text{U}$ isotopic ratio. Each sample was measured with six replicates and 400 scans per replicate. The percentages of ^{235}U and ^{238}U were calculated from the $^{235}\text{U}/^{238}\text{U}$ isotopic ratio.

Figure 1. ELAN 6000 inductively coupled plasma mass spectrometer.



Reproduced by permission of Perkin Elmer.

Figure 2. Cutaway showing internal components of ELAN 6000: (A) interface region between plasma torch and mass filter, (B) torch assembly, (C) quadrupole mass filter, (D) ion optics, (E) rf generator, (F) ion detector, (G) turbomolecular pumping system, (H) nebulizer, and (I) spray chamber.

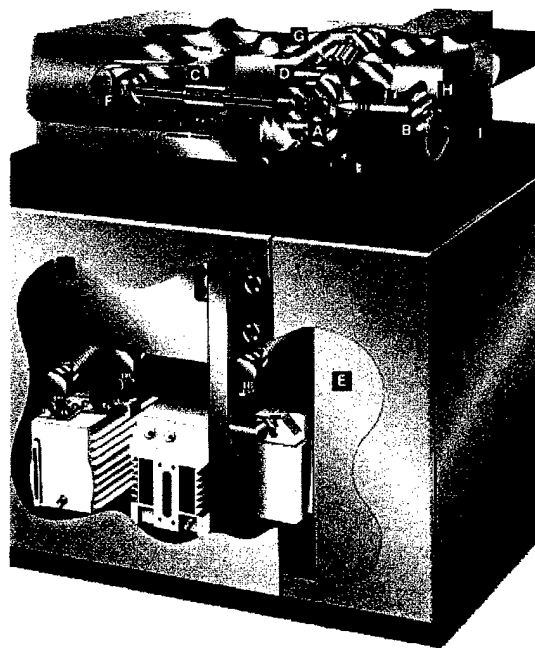


Figure 3. Major hardware components of ELAN 6000 ICP-MS.

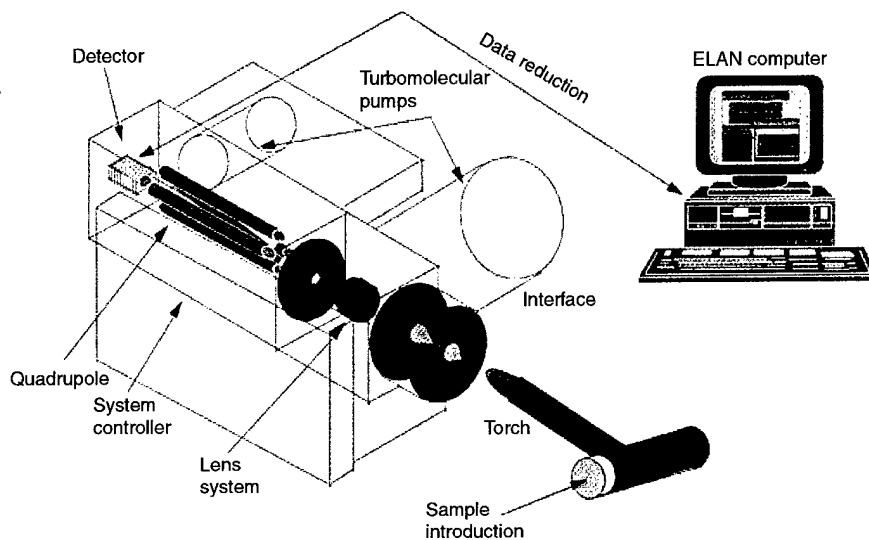


Figure 4. Schematic of components of ELAN 6000 ICP-MS.

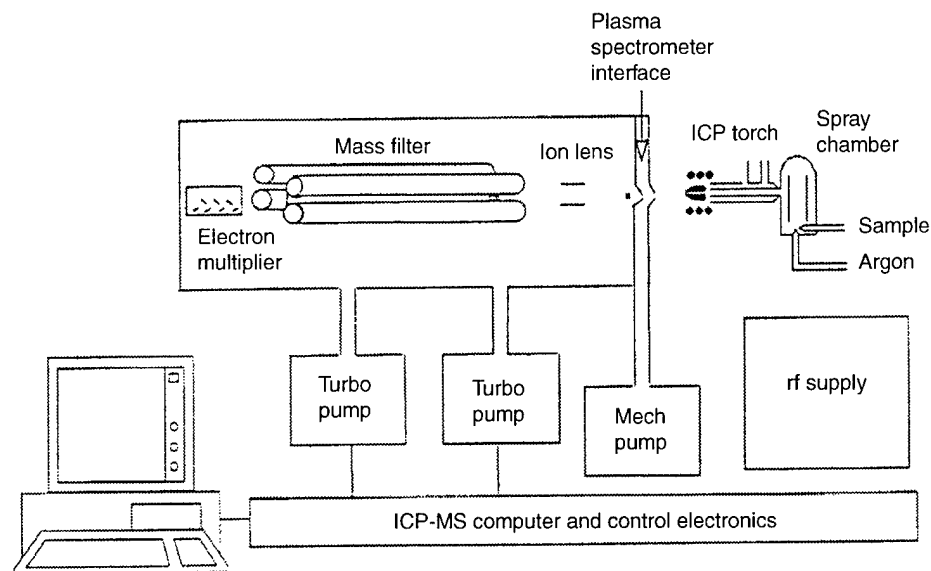


Table 1. Operating conditions used with ELAN 6000 ICP-MS for isotopic ratio measurement of uranium U^{235}/U^{238} in urine.

Instrument operating parameters	Setting
rf power	1000 W
Nebulizer gas flow rate	0.85 L min ⁻¹
Auxiliary gas flow rate	1.1 L min ⁻¹
Plasma gas flow rate	15 L min ⁻¹
Lens setting	8.25 V
Nebulizer type	Cross-flow
Interface cones	Nickel
Mass spectrometer acquisition parameters	
Dwell time	25 ms
Number of sweeps	400
Number of replicates	6
Scan mode	Peak hopping
Multichannel analyzer channels per peak	1

3. Results and Discussion

We can calculate the IDL for uranium by ICP-MS based on 3.29 times the standard deviation of the blank [23,31]. Using this criterion, we determined that the IDL was less than 0.1 ng L^{-1} , a value that is in agreement with Denoyer [32] and Karpas et al [27] and somewhat better than the IDL reported earlier for an ELAN 250 system by Boomer and Powell [15]. Given that the IDL was approximately 0.1 ng L^{-1} and the ^{235}U composition is 0.72 percent for natural uranium and ~ 0.2 percent for the DU, the $^{235}\text{U}/^{238}\text{U}$ isotopic ratio measurement limits were 14 and 50 ng L^{-1} , respectively.

A total of 12 urine samples from individuals enrolled in the DU program at the Baltimore Veterans Affairs Medical Center were ashed, dissolved in 1 molar nitric acid, and measured by KPA and ICP-MS (see table 2). For the KPA analyses, we monitored I-methylglycocyanidine, commonly called creatinine, as an internal standard to assess urine dilution.

Of the 12 urine samples measured by KPA, all but samples 7, 10, and 11 had levels of uranium above the normal reported range [27] of 6 to 30 ng L^{-1} . We determined the percentage of ^{235}U from the $^{235}\text{U}/^{238}\text{U}$ ion intensity ratio measured by ICP-MS (table 2, fig. 5). To calculate the amount of uranium present in the urine from a DU source, we assumed the concentration of ^{235}U in the DU to be 0.2 percent. Table 2 and figure 6 show the calculated percentage of DU in the 12 urine samples.

Of the 12 urine samples, 8 were determined to contain DU, 3 were void of DU, and 1 was below the IDL. Of the eight samples containing DU, six contained >95 percent DU, one contained 90.1 ± 1.6 percent DU, and one contained 74.1 ± 3.8 percent DU.

The six DU samples containing >95 percent DU are not calculated to be 100 percent because the defined range of DU is between 0.20 and 0.25 percent ^{235}U , and we assumed that the ^{235}U content of DU was exactly 0.20 percent. However, the six samples may actually contain 100 percent DU, since the ^{235}U concentration was 0.21 to 0.22 percent, which is within the defined range (0.20 to 0.25 percent). The uranium concentration in these six samples is also elevated significantly relative to normal reported levels of 6 to 30 ng L^{-1} (table 2).

Samples 1, 7, and 10 were void of DU within experimental error and contained only natural background uranium. Samples 7 and 10 were determined to be in the range of normal uranium levels because they contained less than 50 ng L^{-1} . The uranium concentration in sample 1 is above the normal levels reported by Karpas et al [27]. However, even the results for this sample fall within the normal range if we consider the work of Dang et al [33] and Beyer and coworkers [34], where the normal

distribution covered the range from 3 to 310 ng L⁻¹. The uranium concentration in sample 11 was below the IDL. The ²³⁵U counts per second (cps) were less than 3.29 times the background intensity for this sample. The high background level yielded a higher count rate at mass 235, which resulted in an apparent enriched ²³⁵U percentage.

Table 2. Raw uranium data from urine samples measured by ICP-MS.

Sample ID	²³⁵ U (cps) ^a	²³⁸ U (cps)	Ratio ²³⁵ U/ ²³⁸ U	RSD ^b (%)	²³⁵ U (%)	DU (%)	U ^c (ng L ⁻¹)
1	54.7	7,596	0.00734	2.81	0.73±0.020	-1.9±4.0	110
2	374	175,432	0.00215	0.90	0.21±0.002	98.1±0.4	1,400
3	4841	2,178,768	0.00224	0.79	0.22±0.002	96.2±0.4	36,000
4	1588	771,706	0.00208	0.70	0.21±0.001	98.1±0.3	9,000
5	623	300,438	0.00209	0.92	0.21±0.002	98.1±0.4	17,000
6	1523	751,209	0.00205	0.69	0.20±0.001	100.0±0.7	45,000
7	21.2	2,746	0.00777	11.00	0.77±0.085	-9.6±16.3	— ^d
8	75.4	22,634	0.00336	5.87	0.33±0.020	75.0±3.8	150
9	71.4	28,549	0.00252	3.30	0.25±0.008	90.4±1.6	280
10	15.8	2,280	0.00704	14.1	0.70±0.099	3.8±19.0	— ^d
11	6.4	623	0.01029	8.06	1.01±0.081	-55.8±15.7	— ^d
12	1113	544,168	0.00206	1.01	0.21±0.002	98.1±0.4	9,200

^a Counts per second.

^b Relative standard deviation.

^c Uranium concentration measured in urine specimens by KPA. Units are defined as nanograms uranium per liter of urine.

^d Below detection limit (50 ng L⁻¹) of KPA method.

Figure 5. Percentage of ²³⁵U in 12 urine samples measured by ICP-MS. Percentages were calculated from measured ²³⁵U and ²³⁸U intensities.

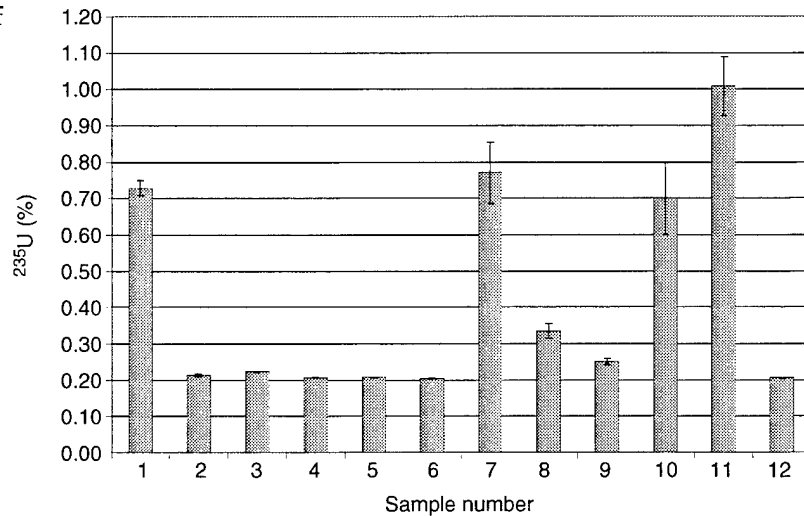
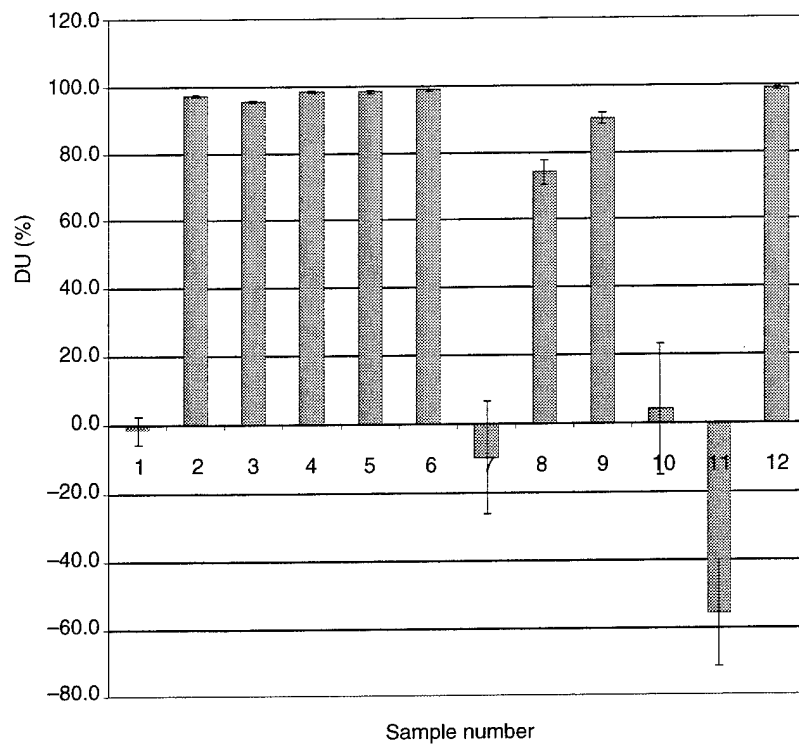


Figure 6. Percentage DU calculated from percentage of ^{235}U present in urine samples.



4. Conclusions

The urine of individuals not exposed to DU contains natural background uranium, which is 0.72 percent abundant in ^{235}U . Exposure to DU causes the percentage of ^{235}U to decrease to a range between 0.72 and 0.2 wt.% and the total uranium concentration to increase above normal background levels.

The goal of this study was to develop an assay to determine the isotopic composition of uranium in urine samples by ICP-MS, so that we can rapidly and effectively determine exposure of soldiers to DU. Since the detection limit of the instrumentation for isotopic ratio measurements for these kinds of samples (14 ng L^{-1}) is within the range of uranium concentrations in the urine of the typical nonexposed individual (i.e., 6 to 30 ng L^{-1}), the assay can accurately determine if an individual has been exposed to DU when uranium levels in the urine increase above baseline levels. This assay is being used to help determine whether Gulf War veterans with elevated uranium levels have suffered DU exposure.

The entire procedure required 8 days to complete, but over 50 samples can be analyzed per day by ICP-MS operating in the manual sampling mode. The use of an autosampler would increase the throughput at the ICP-MS stage to hundreds of samples per day.

In the past, low levels of DU exposure were difficult to determine because everyone has low levels of natural uranium in their urine. This assay can accurately determine whether the uranium in urine is from DU or natural background uranium. Therefore, this assay can be useful in efforts to resolve toxicological issues relative to DU exposure and health issues associated with the Gulf War.

References

1. B. Rostker, "Environmental Exposure Report: Depleted Uranium in the Gulf," <http://www.gulflink.osd.mil/du> (July 31, 1998).
2. W. Campen and K. Bachmann, *Mikrochim. Acta* **II** (1979), 159–170.
3. C. A. Zook, *Mikrochim. Acta* **II** (1981), 457–468.
4. P. G. Whitkop, *Anal. Chem.* **54** (1982), 2475–2477.
5. A. T. Rhys Williams and J. N. Miller, *Analyt. Acta* **154** (1983), 341–345.
6. P. Decambox, P. Mauchien, and C. Moulin, *Appl. Spectrosc.* **45**, 1 (1991), 116–118.
7. R. Brina and A. G. Miller, *Anal. Chem.* **64** (1992), 1413–1418.
8. G. Crehange and P. Gerasimo, *Radioprotection* **27** (1992), 283–290.
9. T. J. Miller, *Anal. Lett.* **24** (1991), 657–664.
10. C. L. Duarte and M.S.F. Szeles, *J. Radioanal. Nucl. Chem.* **177** (1994), 73–79.
11. G. G. Jia, S. Bazzari, F. Micci, and C. J. Testa, *Radioanal. Nucl. Chem.* **178** (1994), 11–18.
12. K. I. Kressin, *Anal. Chem.* **56** (1984), 2269–2271.
13. H. S. Dang, V. R. Pullat, and K. C. Pillai, *Radiat. Protect. Dosim.* **40** (1992), 195–197.
14. G. F. Kirkbright and Z. Li-Xing, *Appl. Spectrosc.* **37** (1983), 11–16.
15. G. Horlick and Y. Shao, "Inductively Coupled Plasma-Mass Spectrometry for Elemental Analysis," in *Inductively Coupled Plasmas in Analytical Atomic Spectrometry*, 2nd ed., A. Montaser, and D. W. Golightly, eds. (1992), VCH Publishers, New York.
16. F. Vanhaecke, L. Moens, and P. Taylor, "Use of ICP-MS for Isotope Ratio Measurements" in *Inductively Coupled Plasma Spectrometry and Its Applications*, S. J. Hill, ed., CRC Press (1999).
17. D. W. Boomer and M. J. Powell, *Anal. Chem.* **59** (1987), 2810–2813.
18. B.T.G. Ting and M. Janghorbani, *Spectrochim. Acta* **42B**, No. 1/2 (1987), 21–27.
19. G. P. Russ III and J. M. Bazan, *Spectrochim. Acta* **42B**, No. 1/2 (1987), 49–62.
20. H. P. Longerich, B. J. Fryer, and D. F. Strong, *Spectrochim. Acta* **42B**, No. 1/2 (1987), 39–48.
21. E. S. Gladney, *Health Phys.* **57** (1989), 171.

22. K. J. Mulligan, T. M. Davidson, and J. A. Caruso, *J. Anal. Atomic Spectrosc.* **5** (1990), 301–306.
23. J. P. Schmit, M. Youla, and Y. Gelinias, *Analyt. Chim. Acta* **249** (1991), 495–501.
24. H. Vanhoe, R. Dams, and J. J. Versieck, *Anal. At. Spectrosc.* **9** (1994), 23–31.
25. D. W. Medley, R. L. Kathren, and A. G. Miller, *Health Phys.* **67**, No. 2 (1994), 122–130.
26. A. Lorber, Z. Karpas, and L. Halicz, *Analyt. Chim. Acta* **334** (1996), 295–301.
27. Z. Karpas, L. Halicz, J. Roiz, R. Marko, E. Katorza, A. Lorber, and Z. Goldbart, *Health Phys.* **71**, No. 6 (1996), 879–885.
28. Z. Karpas, A. Lorber, E. Elish, R. Kol, R. Roiz, R. Marko, E. Katorza, L. Hajicz, J. Riondata, F. Vanhaecke, and L. Moens, *Health Phys.* **74**, No. 3 (1998), 337–345.
29. A. Lorber, L. Halicz, Z. Karpas, E. Elish, J. Roiz, and R. Marko, “Uranium in Urine and Serum of ‘Normal’ Populations: A FIAS-ICP-MS Study,” in *Plasma Source-Mass Spectrometry Developments and Applications*, G. Holland and S. D. Tanner, eds., Cambridge, UK, Royal Chemical Society (1997).
30. L. L. Moore and R. L. Williams, *J. Radioanal. Nucl. Chem.* **156** (1992), 223.
31. L. A. Currie, *Anal. Chem.* **40** (1968), 586.
32. E. R. Denoyer, *Int. Lab.* (April 1995), 8–13.
33. H. S. Dang, V. R. Pullat, and K. C. Pillai, *Health Phys.* **62** (1992), 562–566.
34. D. Beyer, R. Biehl, and G. Pilwat, *Health Phys.* **64** (1993), 321.

Distribution

Admnstr
Defns Techl Info Ctr
Attn DTIC-OCF
8725 John J Kingman Rd Ste 0944
FT Belvoir VA 22060-6218

Ofc of the Secy of Defns
Attn ODDRE (R&AT)
The Pentagon
Washington DC 20301-3080

OSD
Attn OUSD(A&T)/ODDR&E(R) R J Trew
3080 Defense Pentagon
Washington DC 20301-7100

AMCOM MRDEC
Attn AMSMI-RD W C McCorkle
Redstone Arsenal AL 35898-5240

BMDO Direct, Engrg Conc & Compon
Attn TOR J Pohlmann
1725 Jefferson Davis Highway Ste 809
Arlington VA 22202-4102

CECOM
Attn PM GPS COL S Young
FT Monmouth NJ 07703

Dir for MANPRINT
Ofc of the Deputy Chief of Staff for Prsnl
Attn J Hiller
The Pentagon Rm 2C733
Washington DC 20301-0300

Hdqtrs Dept of the Army
Assist Secy of the Army for RD&A
Attn SARD-DOV H Fallin Rm 3E411
The Pentagon
Washington DC 20301-0103

Night Vision & Elec Sensors Dir
Attn AMSEL-RD-NV D Benson
Attn AMSEL-RD-NV J Ratches
10221 Burbeck Rd Ste 430
FT Belvoir VA 22060-5806

TECOM
Attn AMSTE-CL
Aberdeen Proving Ground MD 21005-5057

US Army ARDEC
Attn AMSTA-AR-TD M Fisette
Bldg 1
Picatinny Arsenal NJ 07806-5000

Director
US Army CECOM Rsrch, Dev, & Engrg Ctr
FT Monmouth NJ 07703-5201

US Army Info Sys Engrg Cmnd
Attn ASQB-OTD F Jenia
FT Huachuca AZ 85613-5300

US Army Natick RDEC
Acting Techl Dir
Attn SSCNC-T P Brandler
Natick MA 01760-5002

US Army Natick Rsrch Dev Engrg Ctr
Attn SSCNC-T
Natick MA 01760-5002

US Army Simulation, Train, & Instrmntn
Cmnd
Attn J Stahl
12350 Research Parkway
Orlando FL 32826-3726

US Army Soldier & Biol Chem Cmnd Dir of
Rsrch & Techlgy Dirctr
Attn SMCCR-RS IG Resnick
Aberdeen Proving Ground MD 21010-5423

US Army Tank-Automtv Cmnd Rsrch, Dev, &
Engrg Ctr
Attn AMSTA-TR J Chapin
Warren MI 48397-5000

US Army Train & Doctrine Cmnd Battle Lab
Integration & Techl Dirctr
Attn ATCD-B J A Klevecz
FT Monroe VA 23651-5850

Distribution (cont'd)

US Military Academy
Mathematical Sci Ctr of Excellence
Attn MDN-A LTC M D Phillips
Dept of Mathematical Sci Thayer Hall
West Point NY 10996-1786

Nav Surface Warfare Ctr
Attn Code B07 J Pennella
17320 Dahlgren Rd Bldg 1470 Rm 1101
Dahlgren VA 22448-5100

DARPA
Attn S Welby
3701 N Fairfax Dr
Arlington VA 22203-1714

Hicks & Associates Inc
Attn G Singley III
1710 Goodrich Dr Ste 1300
McLean VA 22102

Palisades Inst for Rsrch Svc Inc
Attn E Carr
1745 Jefferson Davis Hwy Ste 500
Arlington VA 22202-3402

Army Rsrch Ofc
Attn AMSRL-RO-EN W Bach
Attn AMSRL-RO-D C Chang
PO Box 12211
Research Triangle Park NC 27709

US Army Rsrch Lab
Attn AMSRL-CI-AI-A Mail & Records Mgmt
Attn AMSRL-CI-AP Techl Pub (3 copies)
Attn AMSRL-CI-LL Techl Lib (3 copies)
Attn AMSRL-DD J Miller
Attn AMSRL-SE-E H Pollehn
Attn AMSRL-SE-E W Clark
Attn AMSRL-SE-EM J Pamulapati
Attn AMSRL-SE-EM P Boyd (10 copies)
Adelphi MD 20783-1197

REPORT DOCUMENTATION PAGE			Form Approved OMB No. 0704-0188	
Public reporting burden for this collection of information is estimated to average 1 hour per response, including the time for reviewing instructions, searching existing data sources, gathering and maintaining the data needed, and completing and reviewing the collection of information. Send comments regarding this burden estimate or any other aspect of this collection of information, including suggestions for reducing this burden, to Washington Headquarters Services, Directorate for Information Operations and Reports, 1215 Jefferson Davis Highway, Suite 1204, Arlington, VA 22202-4302, and to the Office of Management and Budget, Paperwork Reduction Project (0704-0188), Washington, DC 20503.				
1. AGENCY USE ONLY (Leave blank)		2. REPORT DATE May 2000	3. REPORT TYPE AND DATES COVERED Summary, 4/98-7/99	
4. TITLE AND SUBTITLE Determination of Occupational Exposure to Depleted Uranium Based on Inductively Coupled Plasma Mass Spectrometry			5. FUNDING NUMBERS DA PR: A31B PE: 61102A	
6. AUTHOR(S) Phillip R. Boyd, T. Wayne Tardiff (ARL), John W. Ejnik, Alistair J. Carmichael, Matthew M. Hamilton (Armed Forces Radiobiology Research Institute), Melissa McDiarmid, Katherine Squibb (University of Maryland School of Medicine)				
7. PERFORMING ORGANIZATION NAME(S) AND ADDRESS(ES) U.S. Army Research Laboratory Attn: AMSRL-SE-EI email: prboyd@arl.mil 2800 Powder Mill Road Adelphi, MD 20783-1197			8. PERFORMING ORGANIZATION REPORT NUMBER ARL-TR-2109	
9. SPONSORING/MONITORING AGENCY NAME(S) AND ADDRESS(ES) U.S. Army Research Laboratory 2800 Powder Mill Road Adelphi, MD 20783-1197			10. SPONSORING/MONITORING AGENCY REPORT NUMBER	
11. SUPPLEMENTARY NOTES ARL PR: ONE1BB AMS code: 611102.31B				
12a. DISTRIBUTION/AVAILABILITY STATEMENT Approved for public release; distribution unlimited.			12b. DISTRIBUTION CODE	
13. ABSTRACT (Maximum 200 words) We used a simple method based on inductively coupled plasma mass spectrometry (ICP-MS) to determine the isotopic composition of uranium in urine at levels that indicate occupational exposure to depleted uranium (DU). DU exposure is indicated by a range for ²³⁵ U between 0.72 and 0.2 percent. Using the ICP-MS isotopic ratio method, we determined the percentage of ²³⁵ U in a series of urine samples based on the measured intensities of the ²³⁵ U and ²³⁸ U ions. In this study, urine samples from 12 individuals suspected of having been exposed to DU were processed by the Armed Forces Radiobiology Research Institute (AFRRI) and then analyzed by ICP-MS at the Army Research Laboratory for the presence of DU. We achieved a lower detection limit of 14 ng L ⁻¹ in the original urine samples, which is at or near uranium levels in the general population (not occupationally exposed to uranium). We concluded that this approach can be used to determine the percentage of ²³⁵ U in urine samples characterized by higher than normal uranium levels, and thus whether occupational exposure to DU has occurred.				
14. SUBJECT TERMS Isotopic ratios, Gulf War syndrome, ²³⁵ U, ²³⁸ U, ELAN 6000			15. NUMBER OF PAGES 20	
			16. PRICE CODE	
17. SECURITY CLASSIFICATION OF REPORT Unclassified	18. SECURITY CLASSIFICATION OF THIS PAGE Unclassified	19. SECURITY CLASSIFICATION OF ABSTRACT Unclassified	20. LIMITATION OF ABSTRACT UL	