

**Navigation Study at the Approach  
to Lock and Dam 24,  
Upper Mississippi River**

**Hydraulic Micro Model  
Investigation**

**Volume 2 of 2**

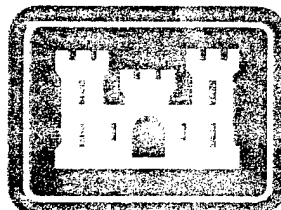
*Jan 98*

**Reproduced From  
Best Available Copy**

**DISTRIBUTION STATEMENT A**  
Approved for Public Release  
Distribution Unlimited

DTIC QUALITY INSPECTED 4

20000703 027



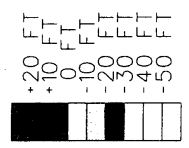
**US Army Corps  
of Engineers**  
St. Louis District



3 Dikes Built on the Illinois Bankline

DUPRET ISLAND  
DIKE NO. 275.3 (L)

Elevations Referenced to LWRP



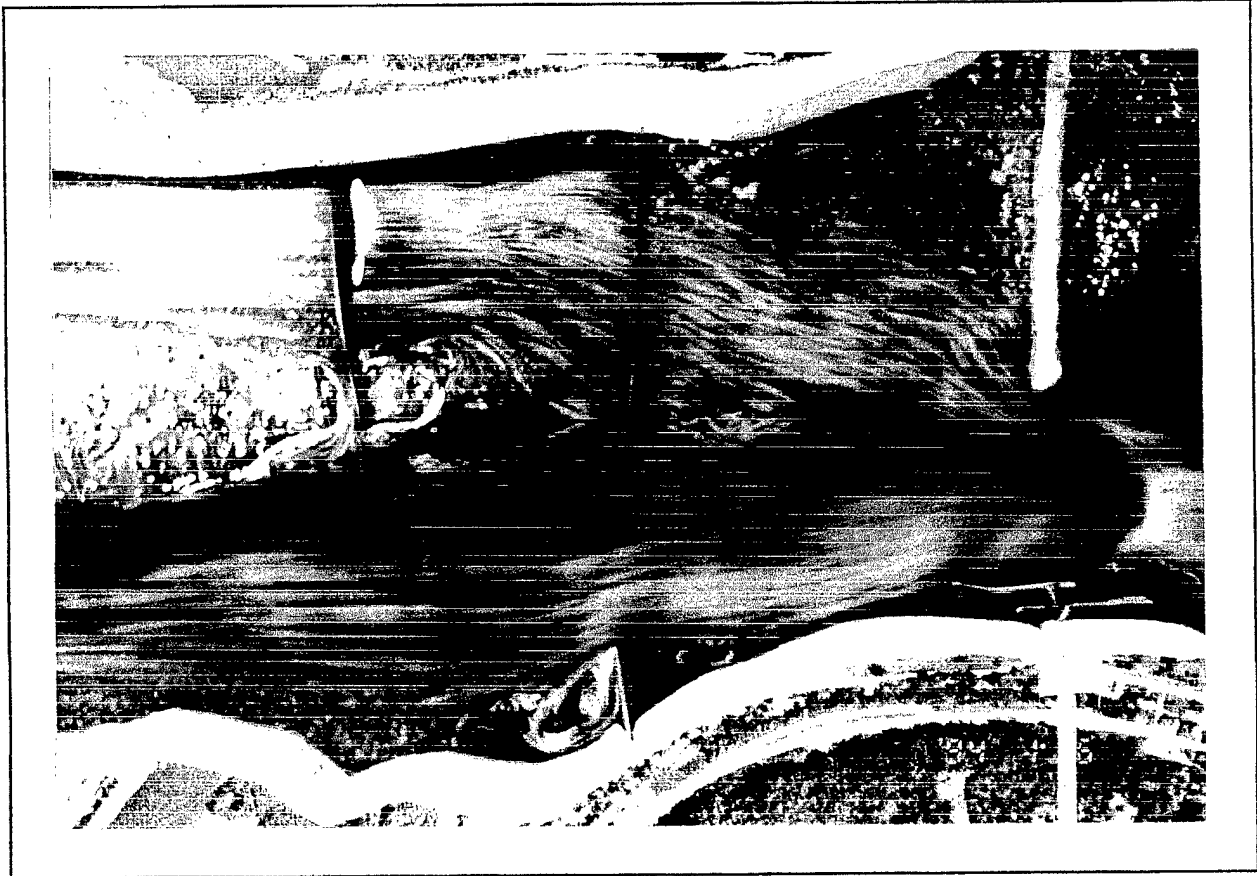
PREPARED BY: D. G. ...  
DRAWN BY: D. G. ...  
CHECKED BY: R. ...

U.S. ARMY ENGINEER DISTRICT, ST. LOUIS  
CORPS OF ENGINEERS  
ST. LOUIS, MISSOURI

Lock and Dam #24 Micro Model Study  
Mississippi River Miles 271 - 277  
Alternative D



DESIGN FILE: D-NCHAD06/VA/24/...  
PLOT SCALE: 1" = 200'



U.S. ARMY ENGINEER DISTRICT, ST. LOUIS  
CORPS OF ENGINEERS  
ST. LOUIS, MISSOURI

PREPARED BY D. Gordon  
CHECKED BY R. Deviney

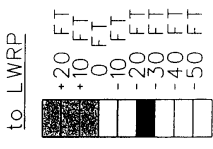
Lock and Dam 24 Micro Model Study  
Mississippi River Miles 271 - 277  
Flow Visualization - Alternative D

PLATE NO

35



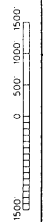
Elevations Referenced to LWRP



U.S. ARMY ENGINEER DISTRICT, ST. LOUIS  
CORPS OF ENGINEERS  
ST. LOUIS, MISSOURI

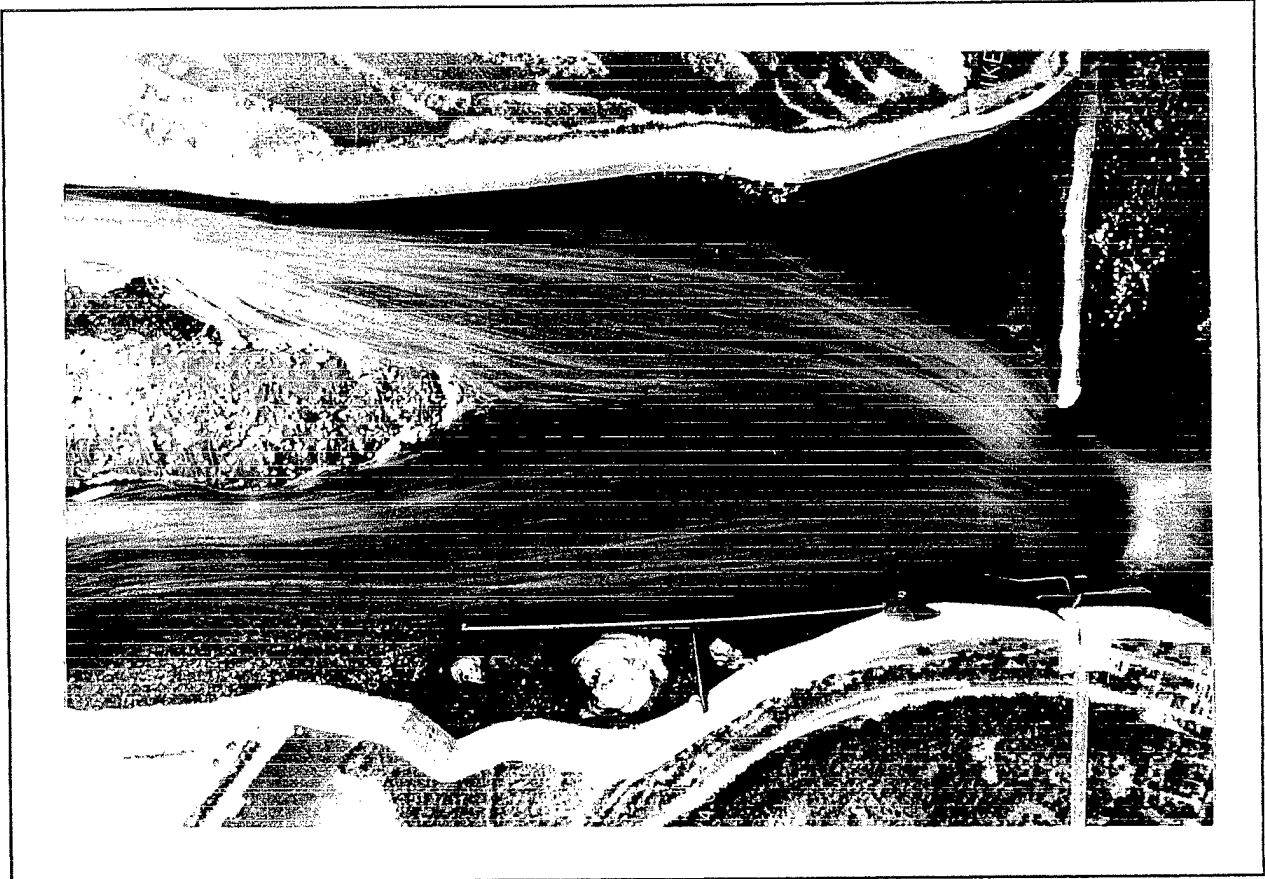
PREPARED BY: B. Cooper  
DRAWN BY: B. Cooper  
CHECKED BY: R. Duvette

Lock and Dam #24 Micro Model Study  
Mississippi River Miles 271 - 277  
Alternative E



DESIGN FILE: D:\MSMODEL\LD#24\ PLOT SCALE: 1" = 2000'

PAGE NO. 36



U.S ARMY ENGINEER DISTRICT, ST. LOUIS  
 CORPS OF ENGINEERS  
 ST. LOUIS, MISSOURI

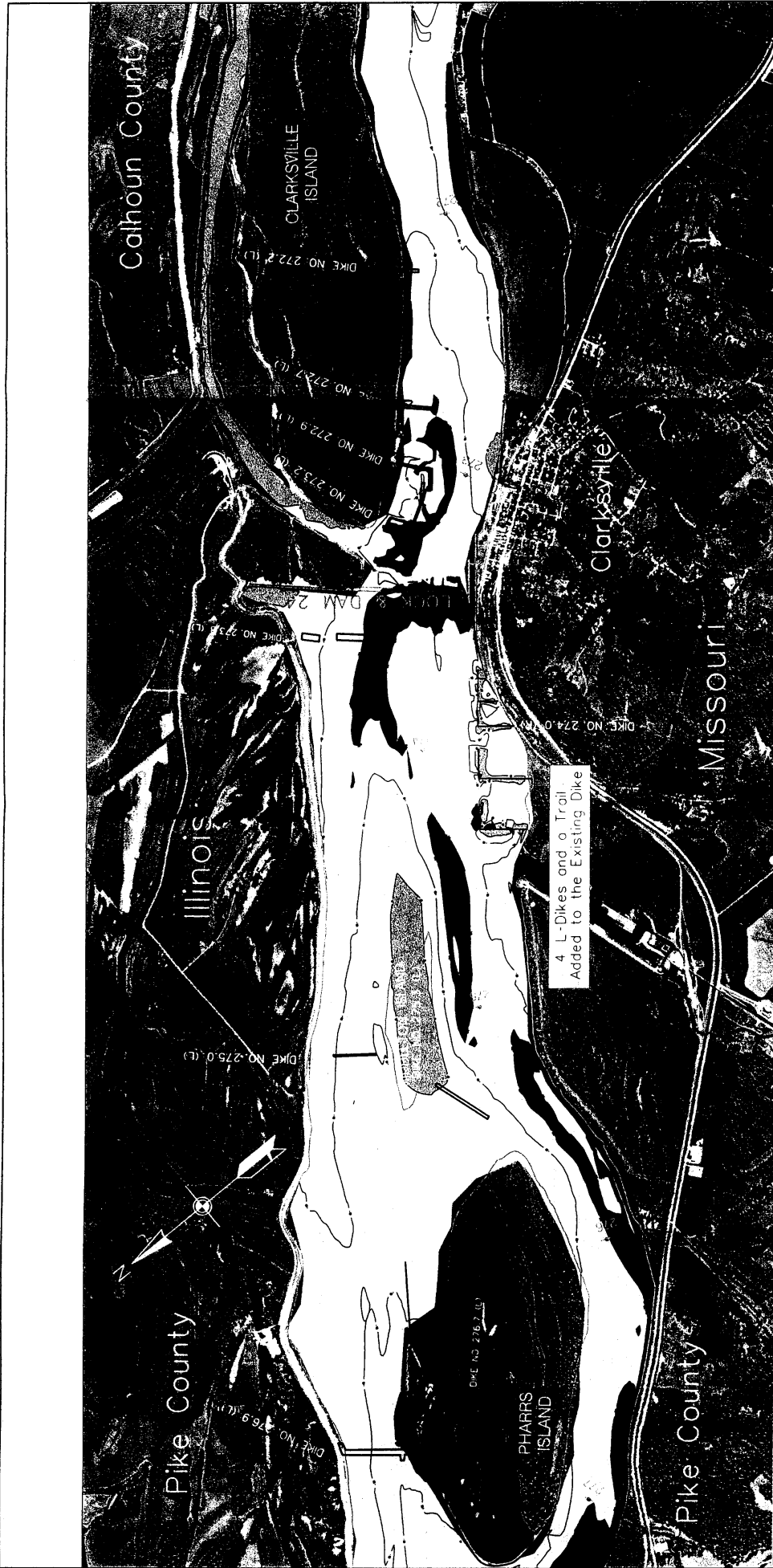
PREPARED BY: D. Gordon  
 CHECKED BY: R. Davnroy

Lock and Dam 24 Micro Model Study  
 Mississippi River Miles 271 - 277

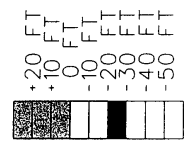
Flow Visualization - Alternative E

PLATE NO

37



Elevations Referenced  
to LWRP



U.S. ARMY ENGINEER DISTRICT, ST. LOUIS  
CORPS OF ENGINEERS  
ST. LOUIS, MISSOURI

Lock and Dam #24 Micro Model Study  
Mississippi River Miles 271 - 277

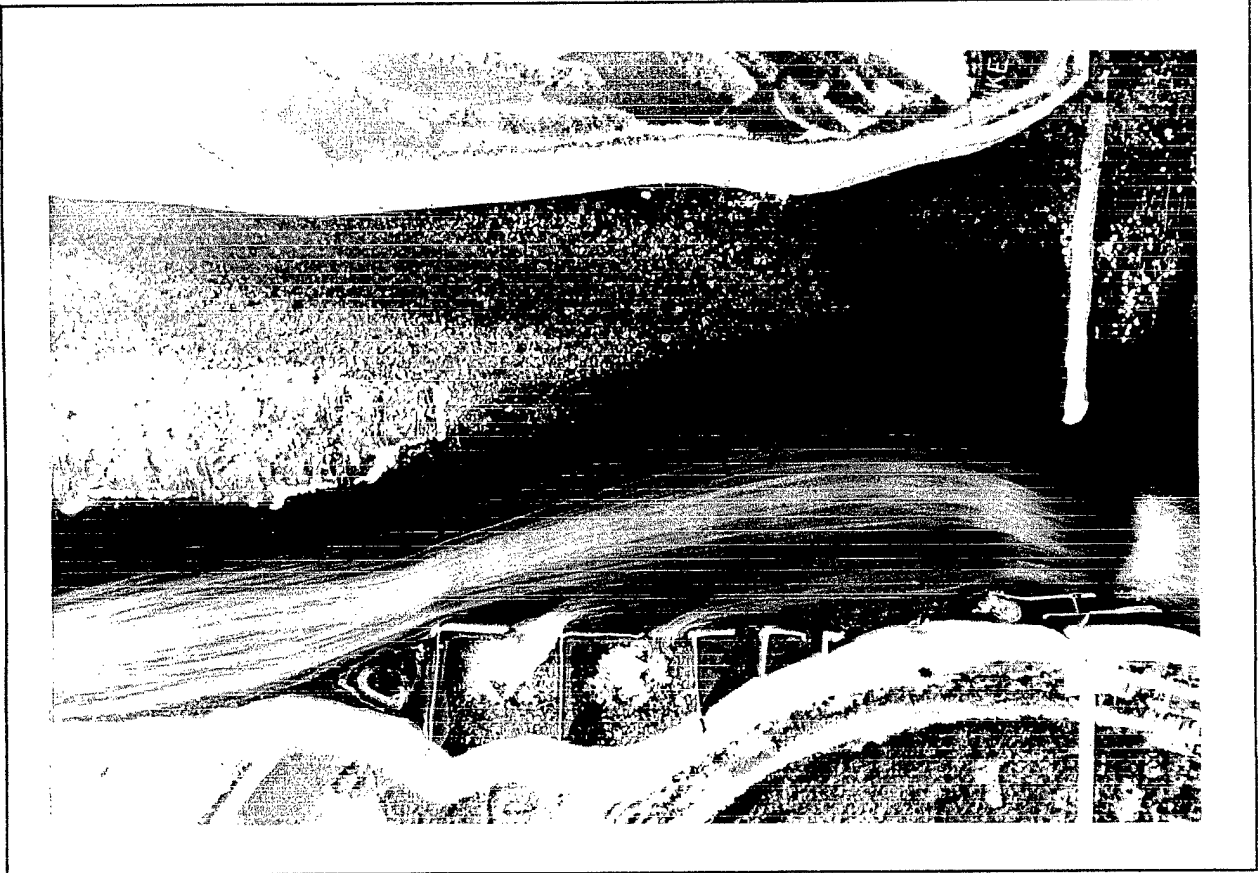
Alternative F



DESIGN FILE: D:\DIGN\WORK\ALTRF24\T  
PLOT SCALE: 1" = 2000'

PLATE NO.

38



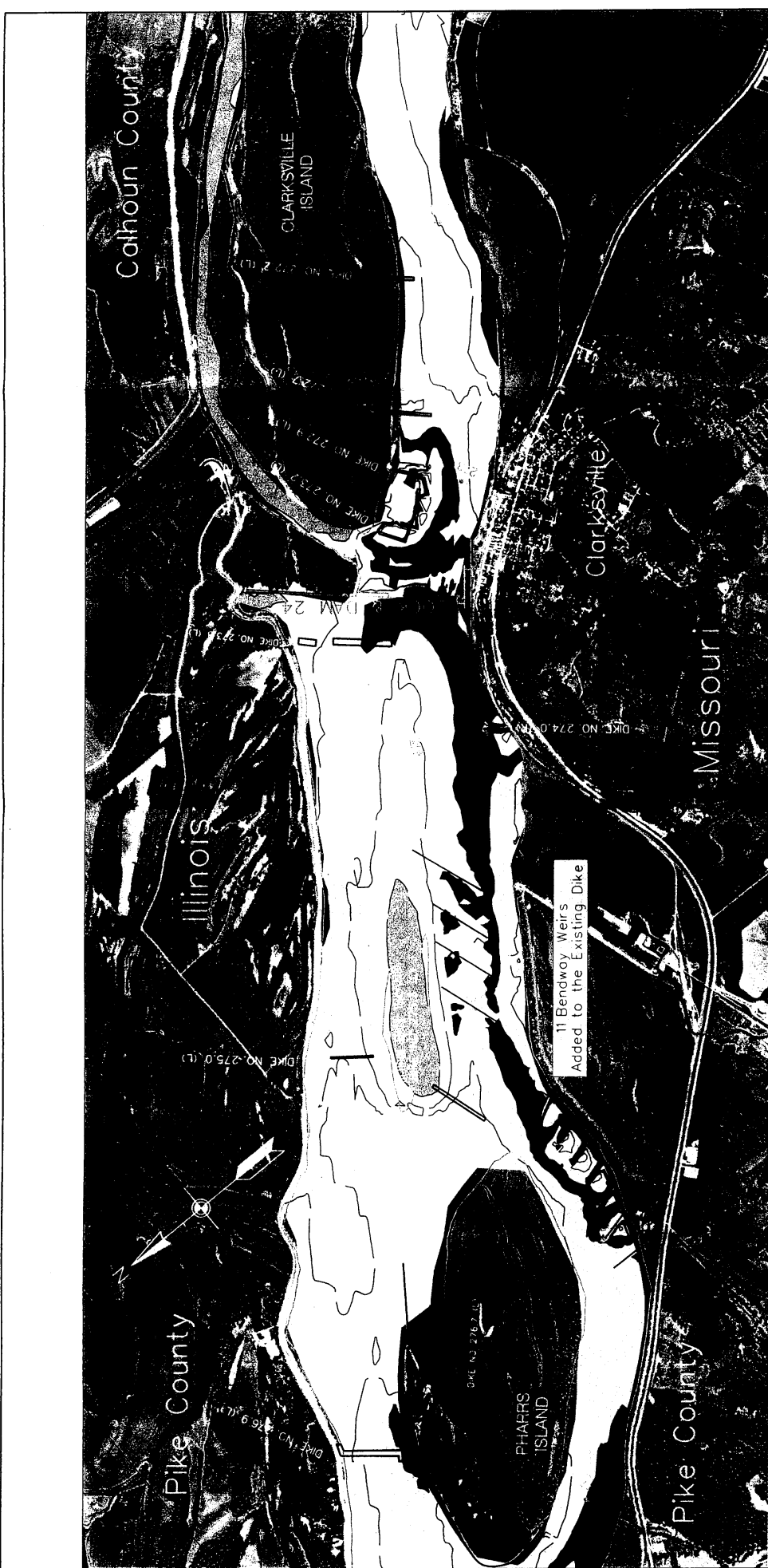
U.S ARMY ENGINEER DISTRICT, ST. LOUIS  
CORPS OF ENGINEERS  
ST. LOUIS, MISSOURI

PREPARED BY: D. Gordon  
CHECKED BY: R. Devroy

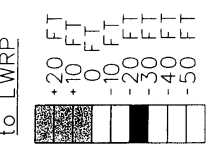
Lock and Dam 24 Micro Model Study  
Mississippi River Miles 271 - 277  
Flow Visualization - Alternative F

PLATE NO

39



Elevations Referenced to LWRP



U.S. ARMY ENGINEER DISTRICT, ST. LOUIS  
CORPS OF ENGINEERS  
ST. LOUIS, MISSOURI

Lock and Dam #24, Micro Model Study  
Mississippi River Miles 271 - 277

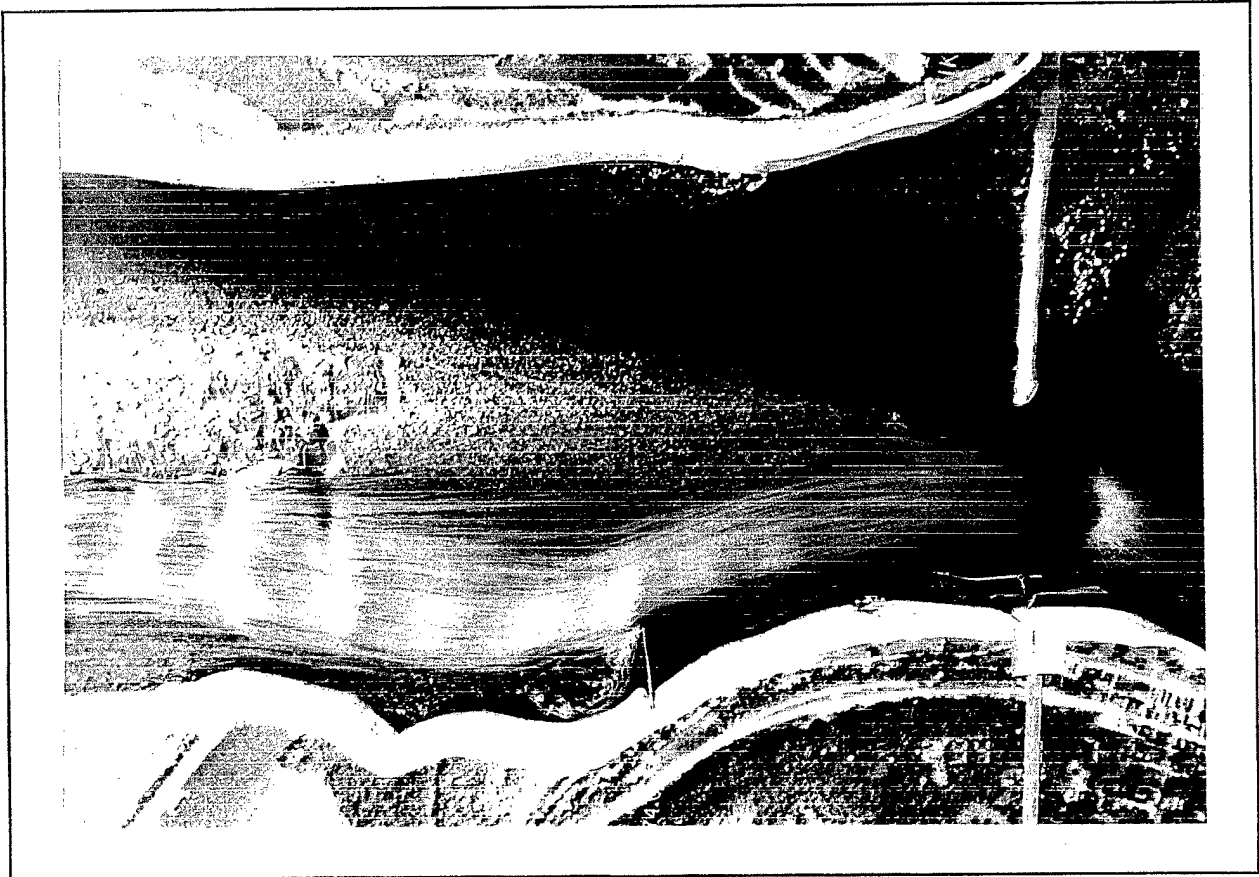
Alternative C

1500  
0 - 500 - 1000 - 1500

DESIGN FILE: D:\NONMODEL\ALD\24A  
PLOT SCALE: 1" = 2000'

PLATE NO

40



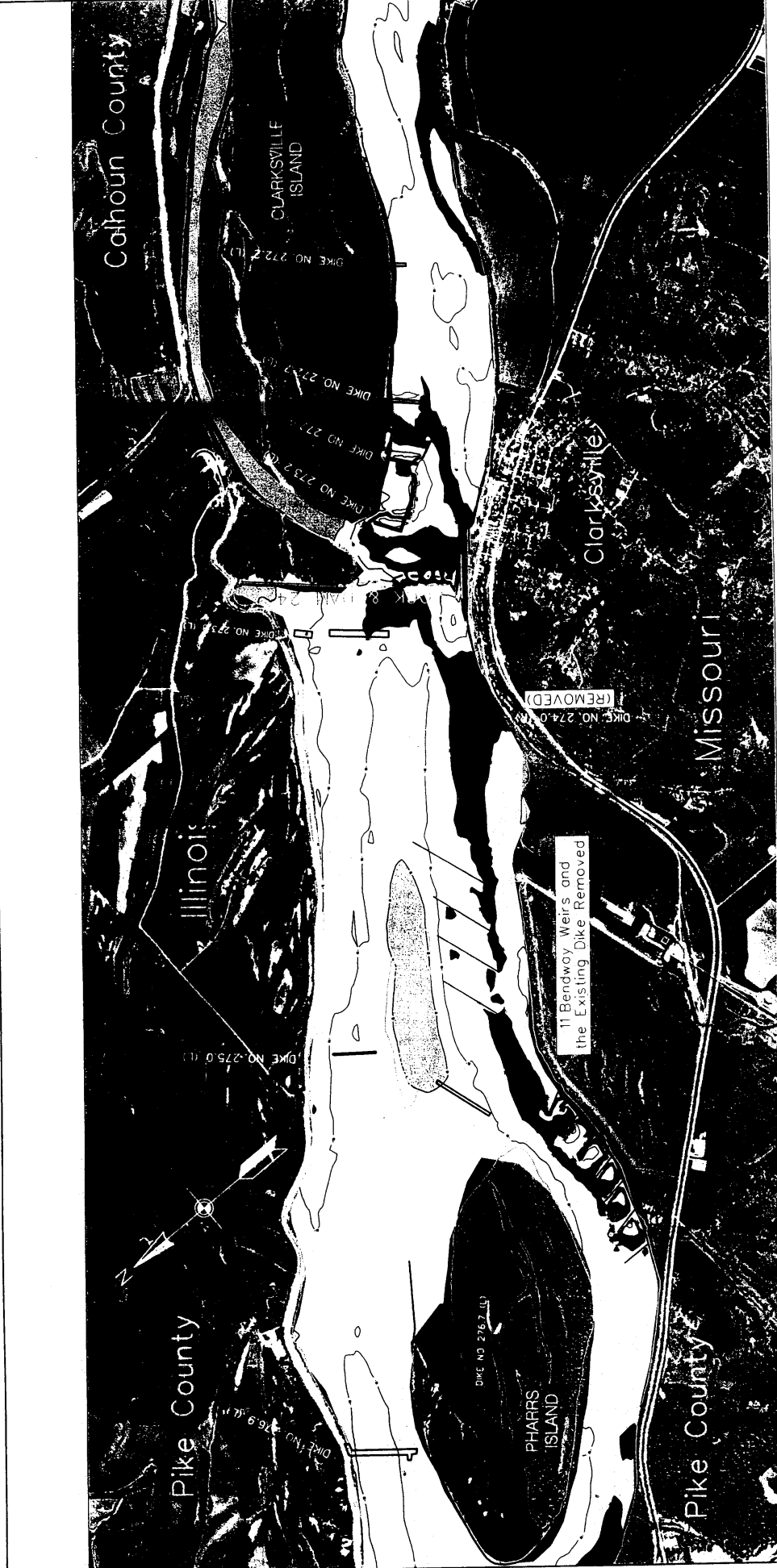
U.S ARMY ENGINEER DISTRICT, ST. LOUIS  
CORPS OF ENGINEERS  
ST. LOUIS, MISSOURI

PREPARED BY D. Gordon  
CHECKED BY R. Downroy

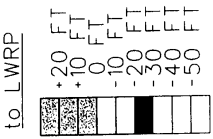
Lock and Dam 24 Micro Model Study  
Mississippi River Miles 271 - 277  
Flow Visualization - Alternative G

PLATE NO

41



Elevations Referenced  
to LWRP



PREPARED BY: D. Colman  
DRAWN BY: D. Colman  
CHECKED BY: R. Goussard

U.S. ARMY ENGINEER DISTRICT, ST. LOUIS  
CORPS OF ENGINEERS  
ST. LOUIS, MISSOURI

Lock and Dam #24 Micro Model Study  
Mississippi River Miles 271 - 277  
Alternative H



DESIGN FILE: D:\03\MODEL\140724  
PLOT SCALE: 1" = 200'



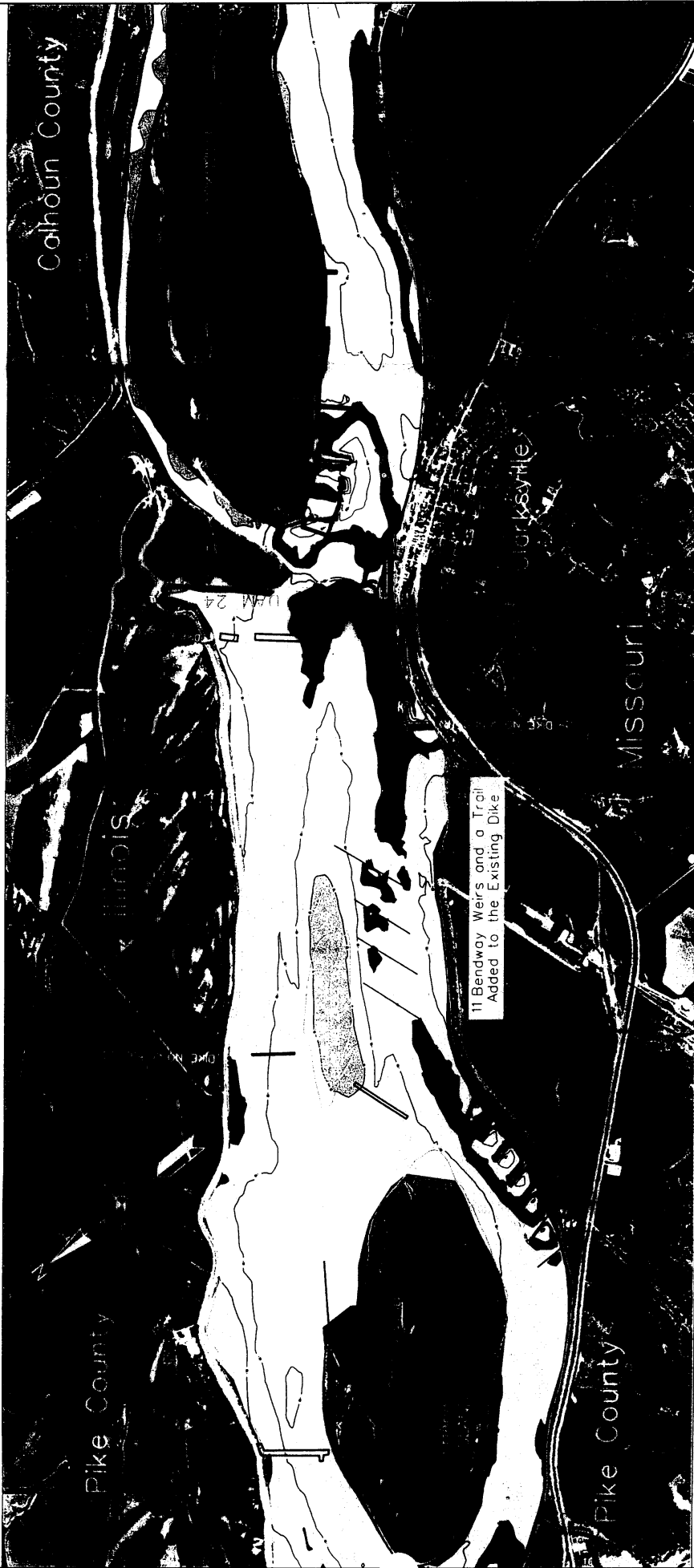
**U.S ARMY ENGINEER DISTRICT, ST. LOUIS  
CORPS OF ENGINEERS  
ST. LOUIS, MISSOURI**

PREPARED BY: D. Gordon  
CHECKED BY: R. Dewdney

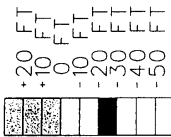
Lock and Dam 24 Micro Model Study  
Mississippi River Miles 271 - 277  
Flow Visualization - Alternative H

PLATE NO

**43**



Elevations Referenced  
to LWRP



PREPARED BY: G. Gordon  
CHECKED BY: G. Gordon  
DRAWN BY: G. Gordon

U.S. ARMY ENGINEER DISTRICT, ST. LOUIS  
CORPS OF ENGINEERS  
ST. LOUIS, MISSOURI

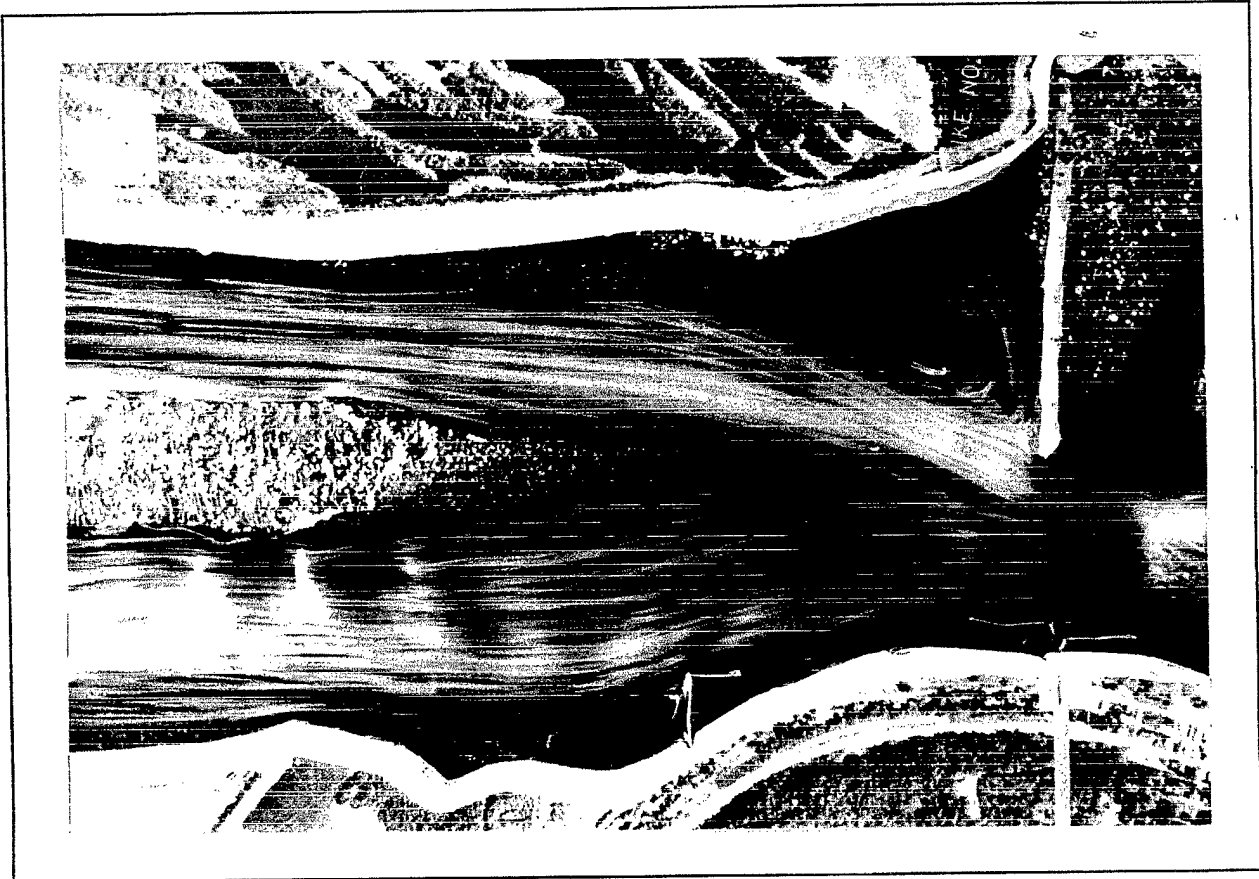
Lock and Dam #24 Micro Model Study  
Mississippi River Miles 271 - 277

Alternative I



DESIGN FILE: DSD/DAW/EL/MD/PAV  
PLOT SCALE: 1" = 1000'

PLATE NO. 44



U.S ARMY ENGINEER DISTRICT, ST. LOUIS  
CORPS OF ENGINEERS  
ST. LOUIS, MISSOURI

PREPARED BY: D. Gordon  
CHECKED BY: R. Dantroy

Lock and Dam 24 Micro Model Study  
Mississippi River Miles 271 - 277

Flow Visualization - Alternative 1

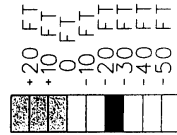
PLATE NO

45



Elevations Referenced

to LWRP



U.S. ARMY ENGINEER DISTRICT, ST. LOUIS  
CORPS OF ENGINEERS  
ST. LOUIS, MISSOURI

Lock and Dam #24 Micro Model Study  
Mississippi River Miles 271 - 277

Alternative J

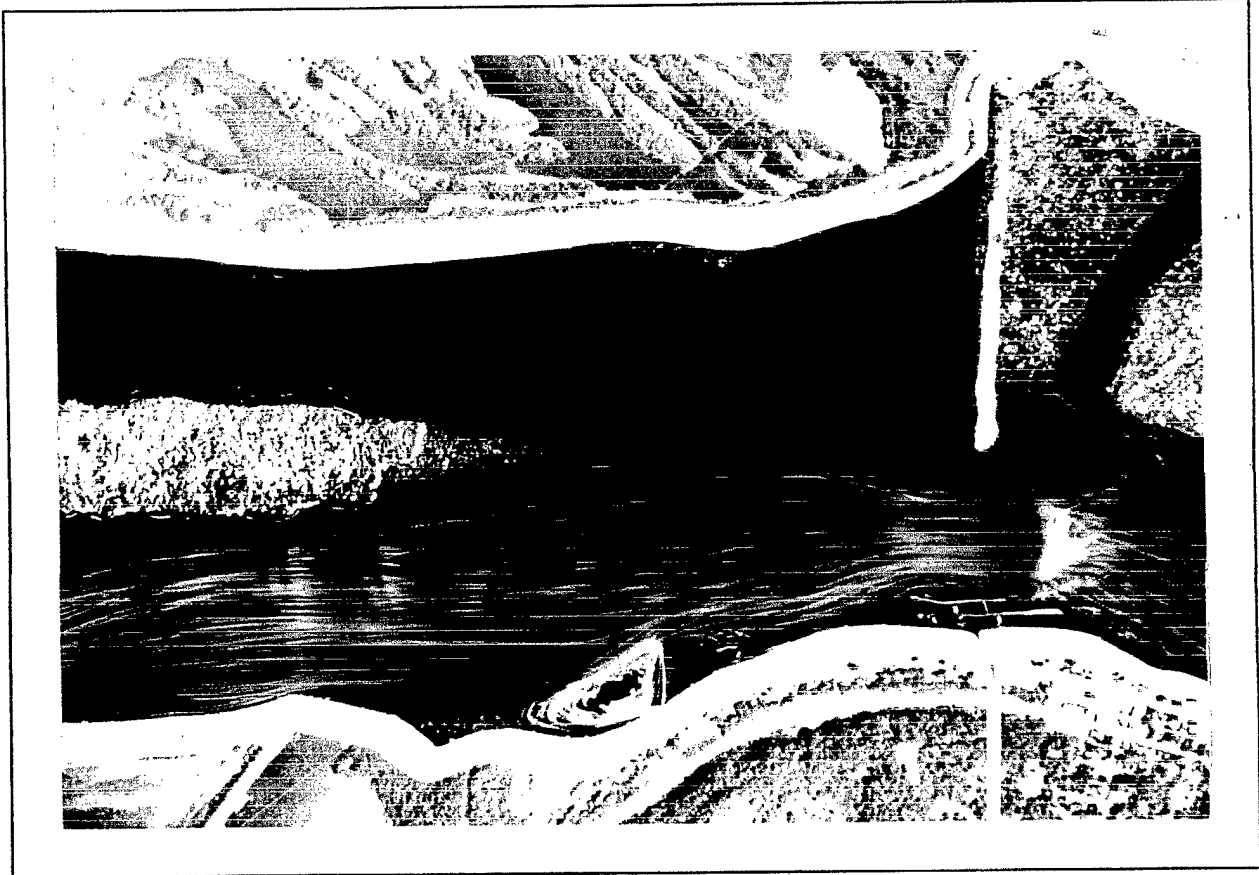
1500' 0 500' 1000' 1500'

DESIGN FILE: D-3004/MSM/LWRP-24

PLOT SCALE: 1" = 200'

PLATE NO.

46



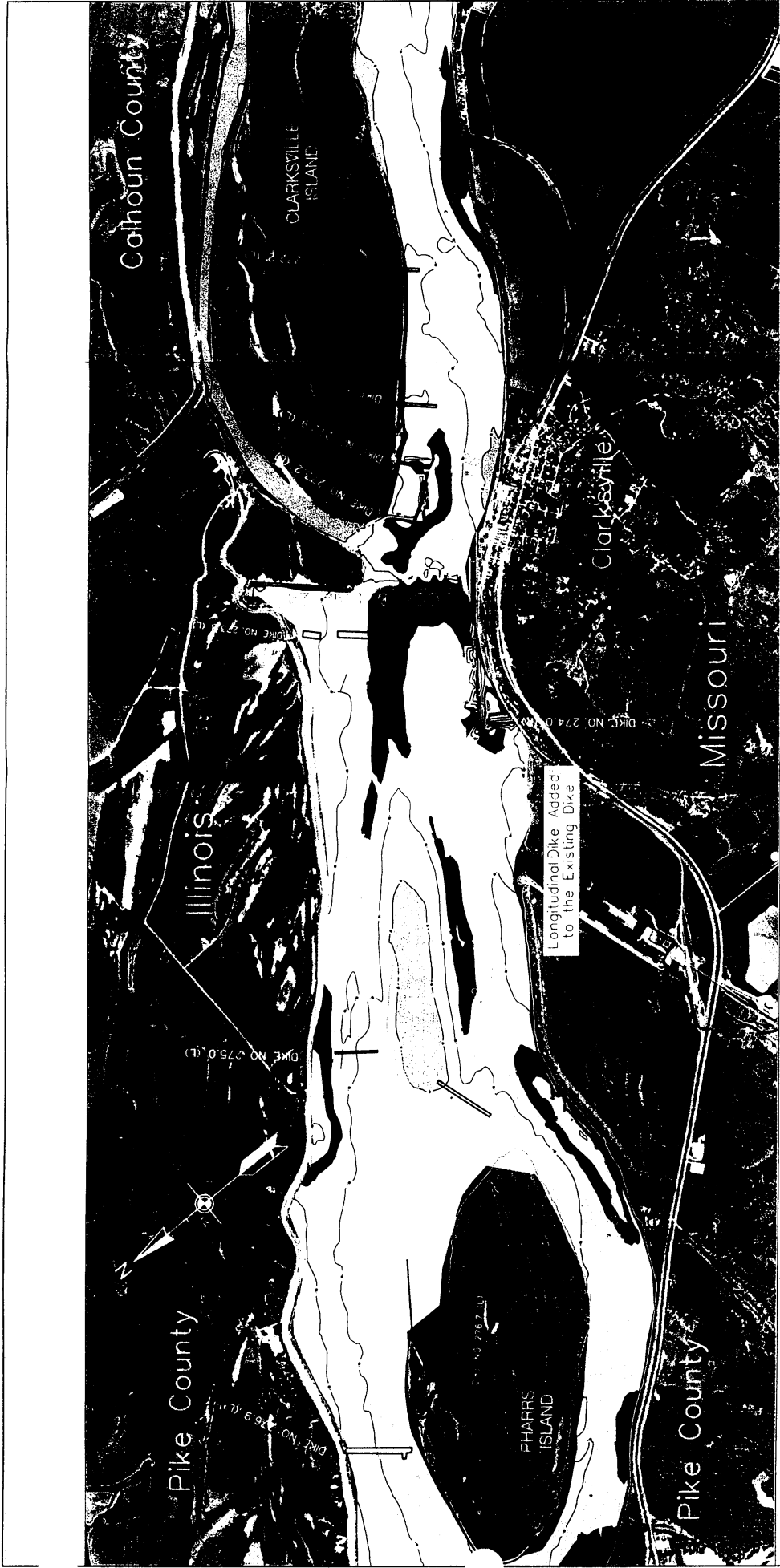
U.S ARMY ENGINEER DISTRICT, ST. LOUIS  
CORPS OF ENGINEERS  
ST. LOUIS, MISSOURI

PREPARED BY: D Gordon  
CHECKED BY: R Demrey

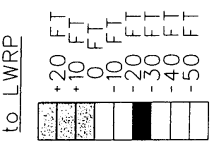
Lock and Dam 24 Micro Model Study  
Mississippi River Miles 271 - 277  
Flow Visualization - Alternative J

PLATE NO

47



Elevations Referenced  
to LWRP



	U.S. ARMY ENGINEER DISTRICT, ST. LOUIS CORPS OF ENGINEERS ST. LOUIS, MISSOURI
	Lock and Dam #24 Micro Model Study Mississippi River Miles 271 - 277 Alternative K
DESIGN FILE: D-500/MODEL/AL0224 1500' 0 500' 1000' 1500' HORIZONTAL SCALE: 1" = 2000' PLATE NO. <b>48</b>	
PREPARED BY: B. Cochran DRAWING BY: D. Gordon CHECKED BY: R. Denny	



U.S ARMY ENGINEER DISTRICT, ST. LOUIS  
CORPS OF ENGINEERS  
ST. LOUIS, MISSOURI

PREPARED BY: D. Gordon  
CHECKED BY: R. Davinroy

Lock and Dam 24 Micro Model Study  
Mississippi River Miles 271 - 277  
Flow Visualization - Alternative K

PLATE NO

49



Elevations Referenced  
to LWRP



U.S. ARMY ENGINEER DISTRICT, ST. LOUIS  
CORPS OF ENGINEERS  
ST. LOUIS, MISSOURI

PREPARED BY: G. Corbett  
DRAWN BY: G. Corbett  
CHECKED BY: S. Benney

Lock and Dam #24 Micro Model Study  
Mississippi River Miles 271 - 277  
Alternative 1

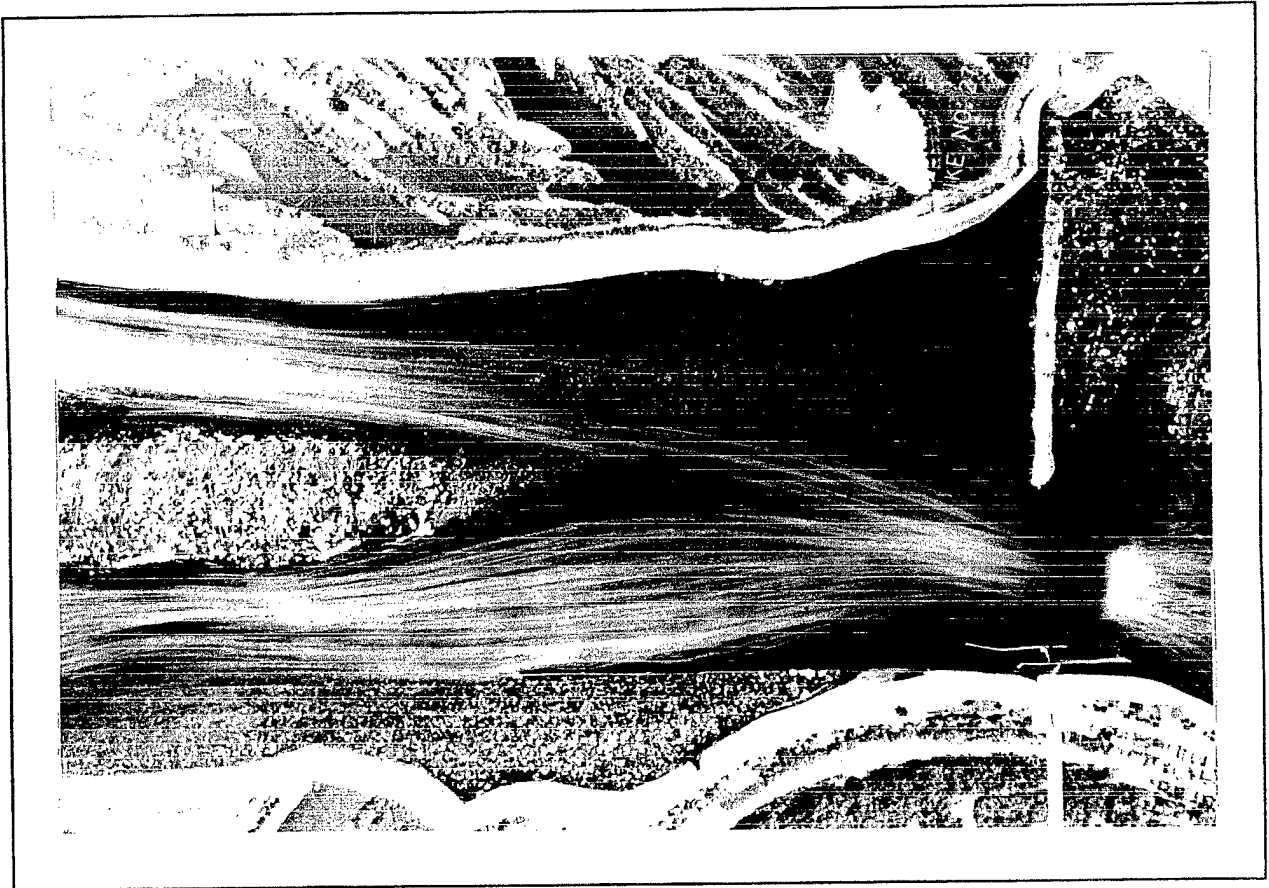
1500 0 500 1000 1500

DESIGN FILE: D:\000\WORK\ALM\024\

PLOT SCALE: 1" = 2000'

PLATE NO.

50



U.S ARMY ENGINEER DISTRICT, ST. LOUIS  
CORPS OF ENGINEERS  
ST. LOUIS, MISSOURI

PREPARED BY: D Gordon  
CHECKED BY: R Damroy

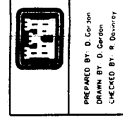
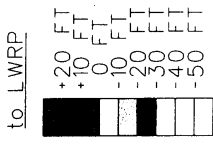
Lock and Dam 24 Micro Model Study  
Mississippi River Miles 271 - 277  
Flow Visualization - Alternative L

PLATE NO

51



Elevations Referenced to LWRP



U.S. ARMY ENGINEER DISTRICT, ST. LOUIS  
CORPS OF ENGINEERS  
ST. LOUIS, MISSOURI

Lock and Dam #24 Micro Model Study  
Mississippi River Miles 271 - 277

Alternative M




DESIGN FILE: P-100000000-224  
PLOT SCALE: 1" = 2000'

PLATE NO  
**52**



3

	<p align="center"><b>U.S ARMY ENGINEER DISTRICT, ST. LOUIS CORPS OF ENGINEERS ST. LOUIS, MISSOURI</b></p>
<p>PREPARED BY: D. Gordon CHECKED BY: R. Demroy</p>	<p align="center">Lock and Dam 24 Micro Model Study Mississippi River Miles 271 - 277 <u>Flow Visualization - Alternative M</u></p>
	<p align="right">PLATE NO <b>53</b></p>

Calhoun County

Pike County

Pike County

Missouri

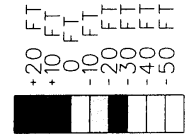
Illinois

4 Bendway Weirs and a Longitudinal Dike, Added to the Existing Dike

CELLULOSE ISLAND DIKE NO. 275.3 (L)

DAM 24

Elevations Referenced to LWRP



DESIGNED BY: D. G. GARDNER  
DRAWN BY: D. G. GARDNER  
CHECKED BY: R. GARDNER

U.S. ARMY ENGINEER DISTRICT, ST. LOUIS  
CORPS OF ENGINEERS  
ST. LOUIS, MISSOURI

Lock and Dam #24 Micro Model Study  
Mississippi River Miles 271 - 277

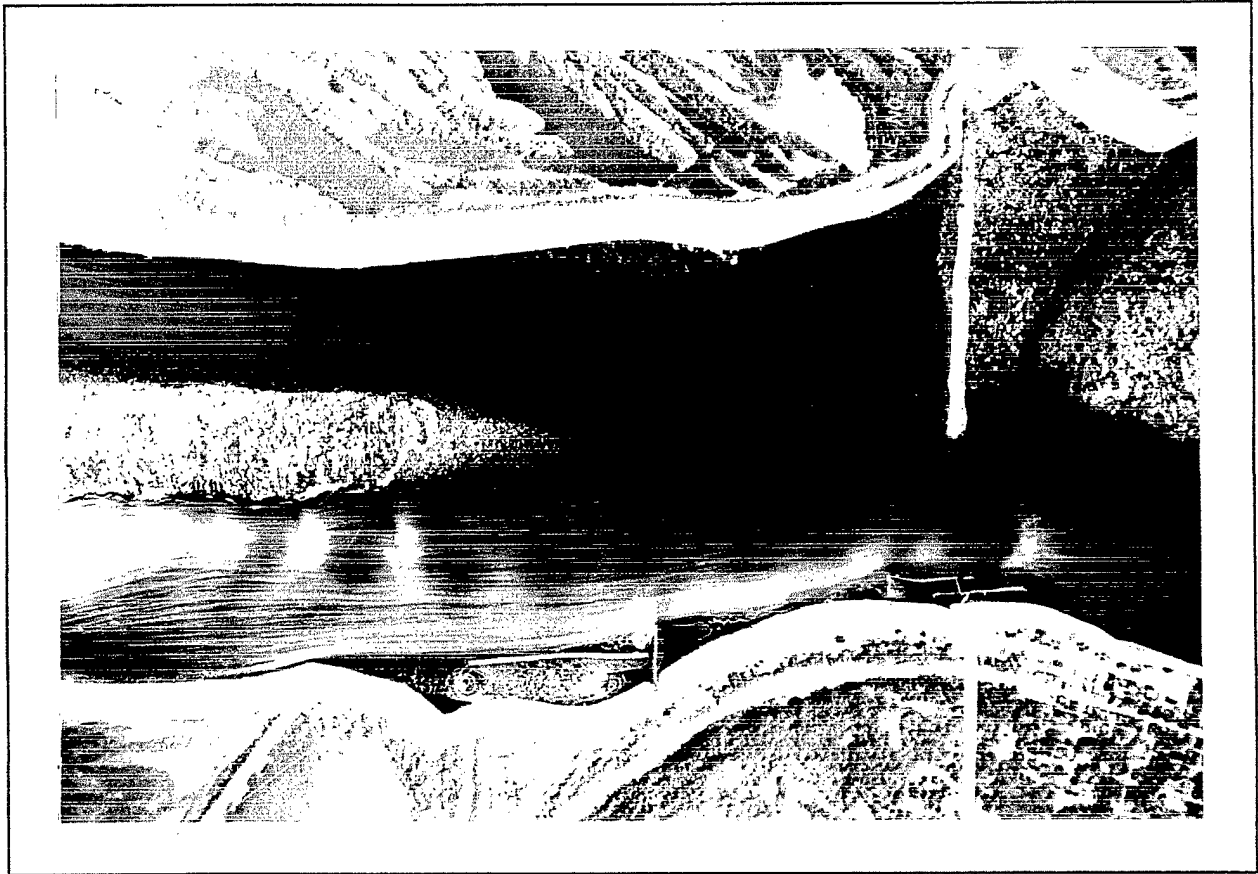
Alternative N



DESIGN FILE: D-NCHAMRKL/SLP/24/

PLATE NO.

54



PREPARED BY: D. Gordon  
CHECKED BY: R. D'Amroy

U.S ARMY ENGINEER DISTRICT, ST. LOUIS  
CORPS OF ENGINEERS  
ST. LOUIS, MISSOURI

Lock and Dam 24 Micro Model Study  
Mississippi River Miles 271 - 277

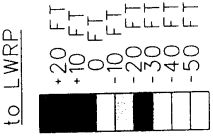
Flow Visualization - Alternative N

PLATE NO

55



Elevations Referenced  
to LWRP



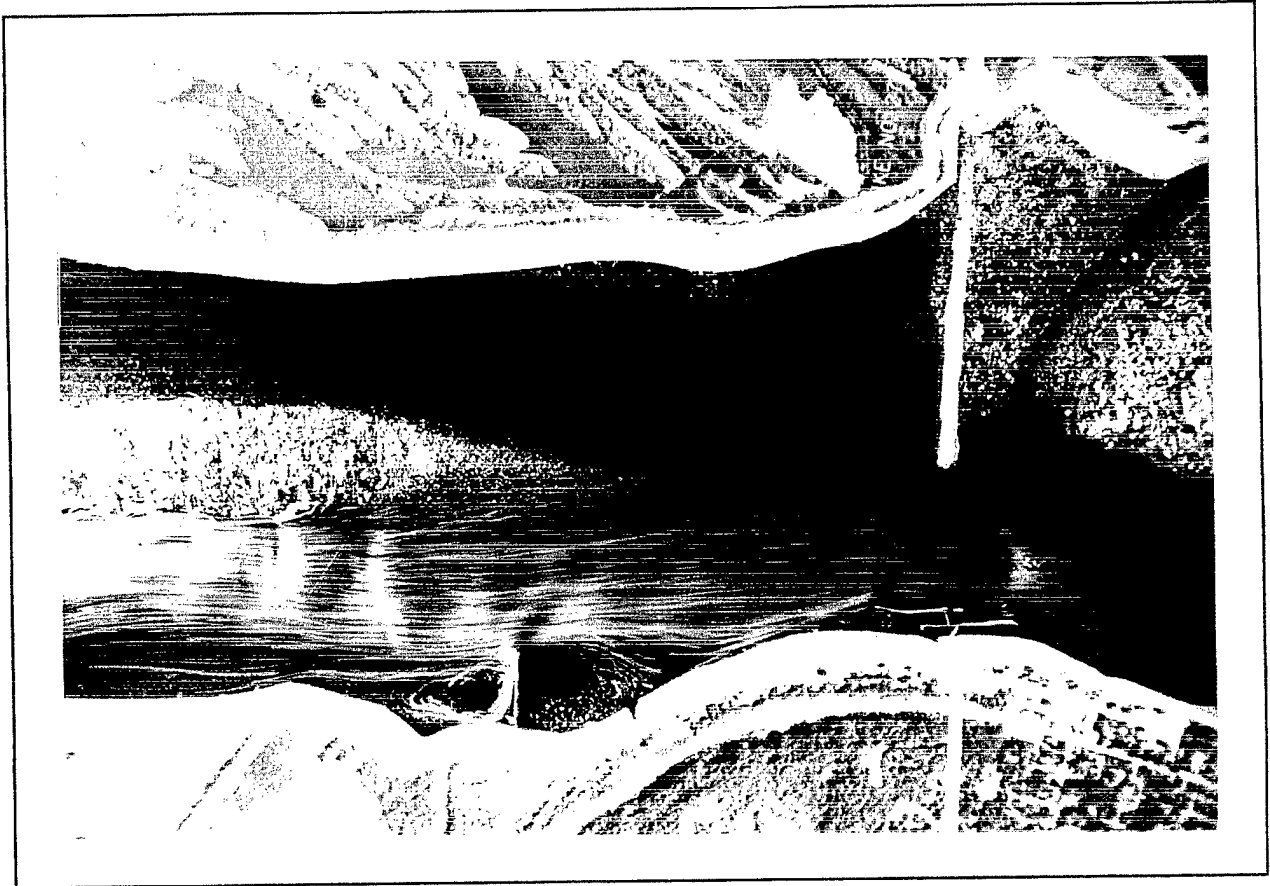
U.S. ARMY ENGINEER DISTRICT, ST. LOUIS  
CORPS OF ENGINEERS  
ST. LOUIS, MISSOURI

Lock and Dam #24 Micro Model Study  
Mississippi River Miles 271 - 277

Alternative 0  
1:500 0 500 1000 1500'

DESIGN FILE: D:\DDM\MODEL\1507-24\1  
PLOT SCALE: 1" = 2000'

PLATE NO  
**56**



U.S ARMY ENGINEER DISTRICT, ST. LOUIS  
CORPS OF ENGINEERS  
ST. LOUIS, MISSOURI

PREPARED BY: D Gordon  
CHECKED BY: R Davinroy

Lock and Dam 24 Micro Model Study  
Mississippi River Miles 271 - 277

Flow Visualization - Alternative O

PLATE NO

57

Calhoun County

Pike County

Illinois

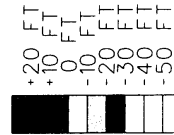
Pike County

MISSOURI



Elevations Referenced

to LWRP



U.S. ARMY ENGINEER DISTRICT, ST. LOUIS  
CORPS OF ENGINEERS  
ST. LOUIS, MISSOURI

PREPARED BY: D. G. Gorman  
DRAWN BY: D. G. Gorman  
CHECKED BY: R. University

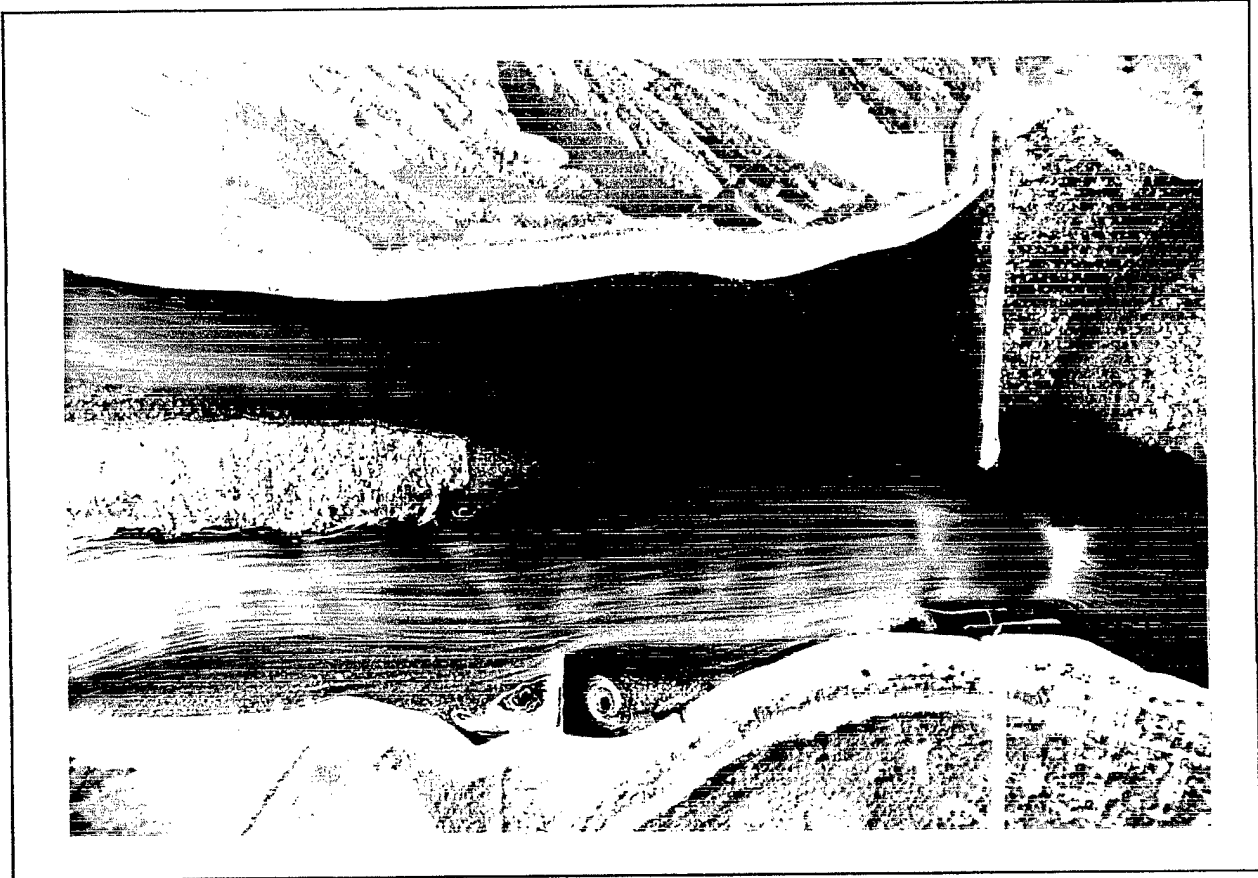
Lock and Dam #24 Micro Model Study  
Mississippi River Miles 271 - 277  
Alternative P

500 1000 1500

PERSON FILE: D:\NONWORK\148P24

PLATE NO

58



U.S. ARMY ENGINEER DISTRICT, ST. LOUIS  
CORPS OF ENGINEERS  
ST. LOUIS, MISSOURI

PREPARED BY: D. Gordon  
CHECKED BY: R. Downroy

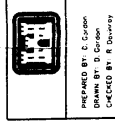
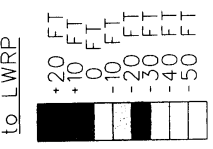
Lock and Dam 24 Micro Model Study  
Mississippi River Miles 271 - 277  
Flow Visualization - Alternative P

PLATE NO

59



Elevations Referenced  
to LWRP



U.S. ARMY ENGINEER DISTRICT, ST. LOUIS  
CORPS OF ENGINEERS  
ST. LOUIS, MISSOURI

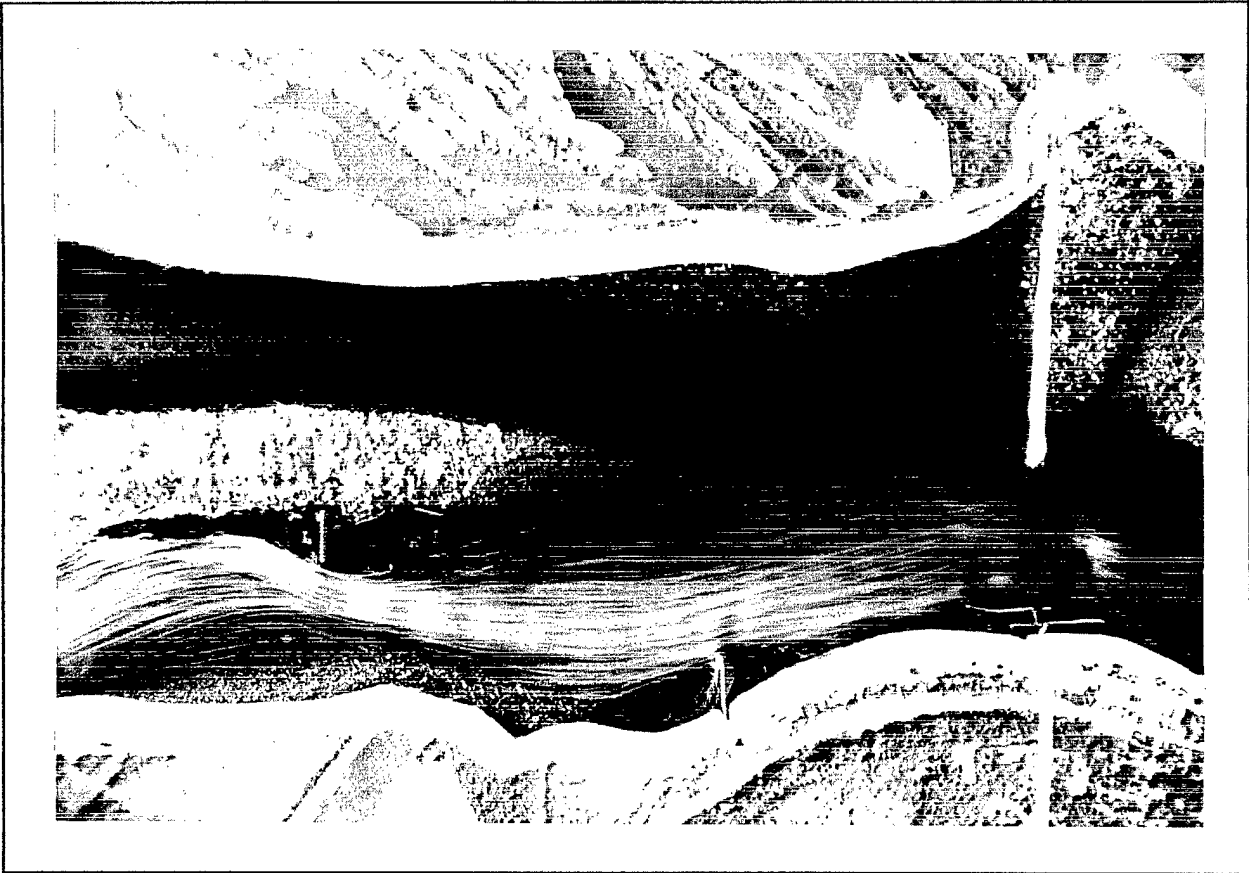
Lock and Dam #24 Micro Model Study  
Mississippi River Miles 271 - 277  
Alternative 0

DESIGN FILE: D-104-MODEL-LAD-24  
PLOT SCALE: 1" = 2000'

1500' 1000' 500' 0' 500' 1000' 1500'

PLATE NO. **60**

PREPARED BY: R. C. Cooper  
DRAWN BY: D. G. Brown  
CHECKED BY: R. D. Dunaway



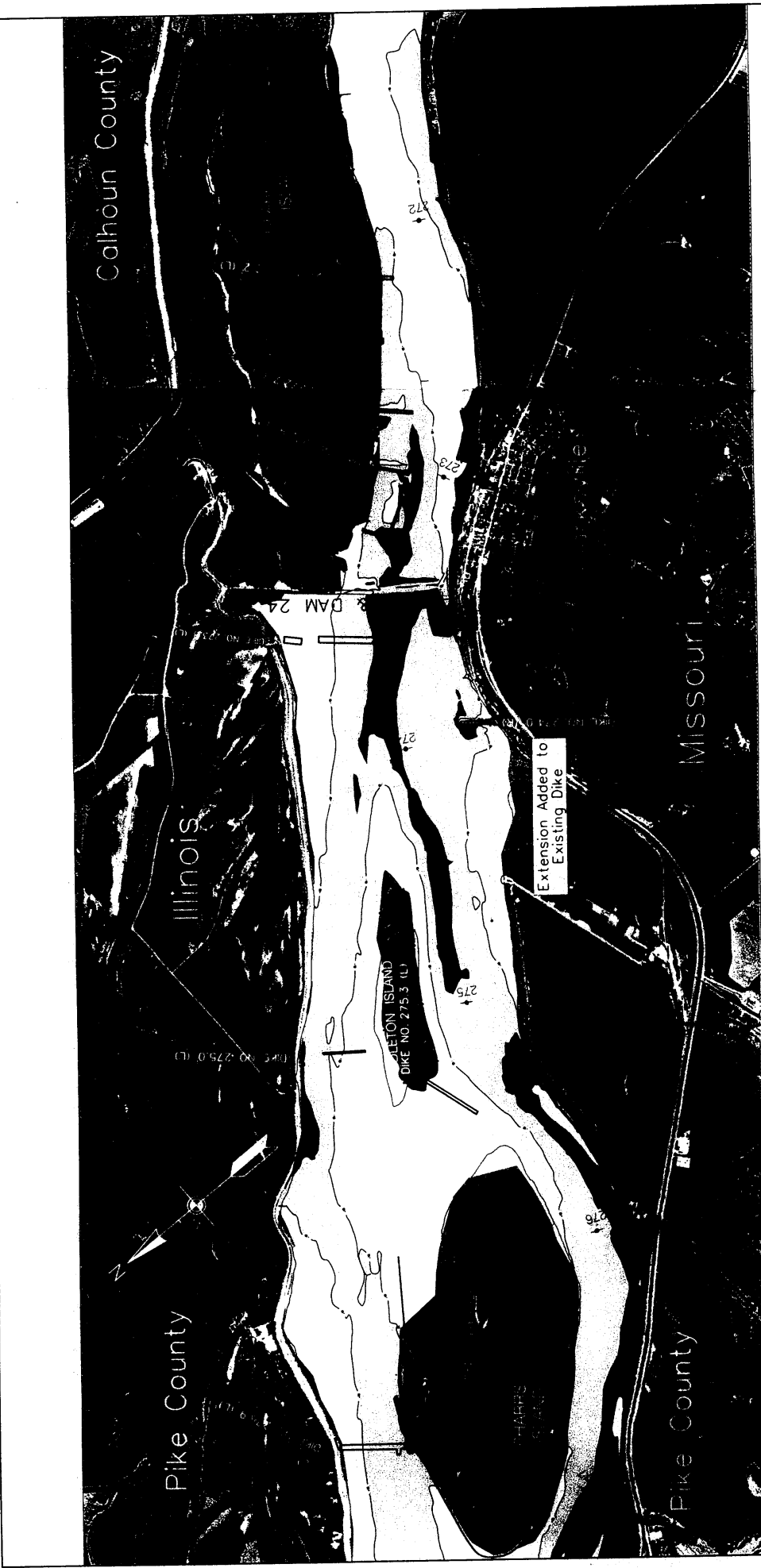
U.S ARMY ENGINEER DISTRICT, ST. LOUIS  
CORPS OF ENGINEERS  
ST. LOUIS, MISSOURI

PREPARED BY: D. Gordon  
CHECKED BY: R. DeMay

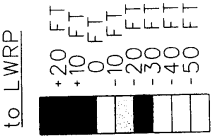
Lock and Dam 24 Micro Model Study  
Mississippi River, Miles 271 - 277  
Flow Visualization - Alternative Q

PLATE NO

61



Elevations Referenced  
to LWRP

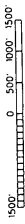


PREPARED BY: D. Groom  
DRAWN BY: D. Groom  
CHECKED BY: R. Dierker

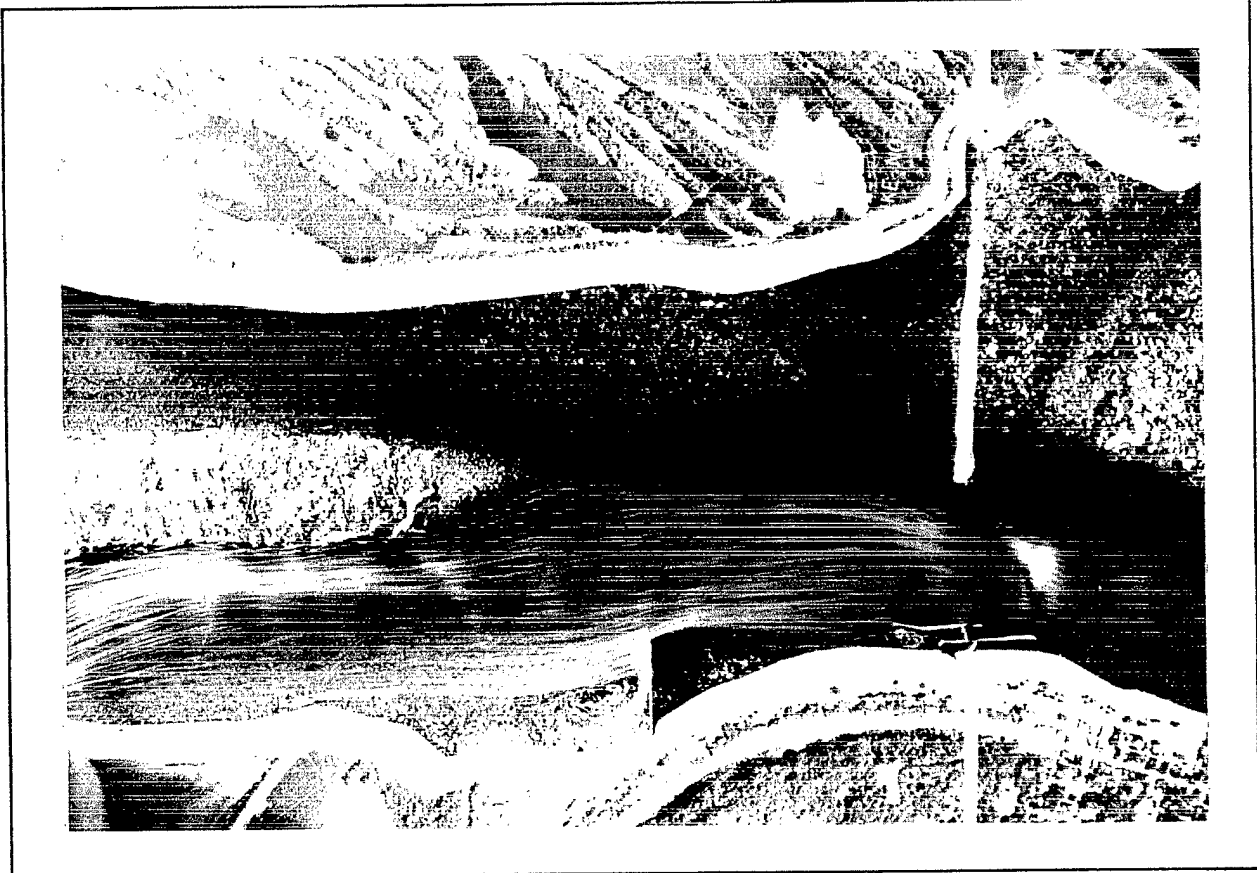
U.S. ARMY ENGINEER DISTRICT, ST. LOUIS  
CORPS OF ENGINEERS  
ST. LOUIS, MISSOURI

Lock and Dam #24 Micro Model Study  
Mississippi River Miles 271 - 277

Alternative R



DESIGN FILE: D:\WORK\DEL\140724\ PLOT NO. 62  
PLOT SCALE: 1" = 200'



U.S ARMY ENGINEER DISTRICT, ST. LOUIS  
CORPS OF ENGINEERS  
ST. LOUIS, MISSOURI

PREPARED BY: D. Gordon  
CHECKED BY: R. Dewarroy

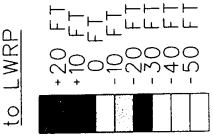
Lock and Dam 24 Micro Model Study  
Mississippi River Miles 271 - 277  
Flow Visualization - Alternative R

PLATE NO.

63



Elevations Referenced  
to LWRP



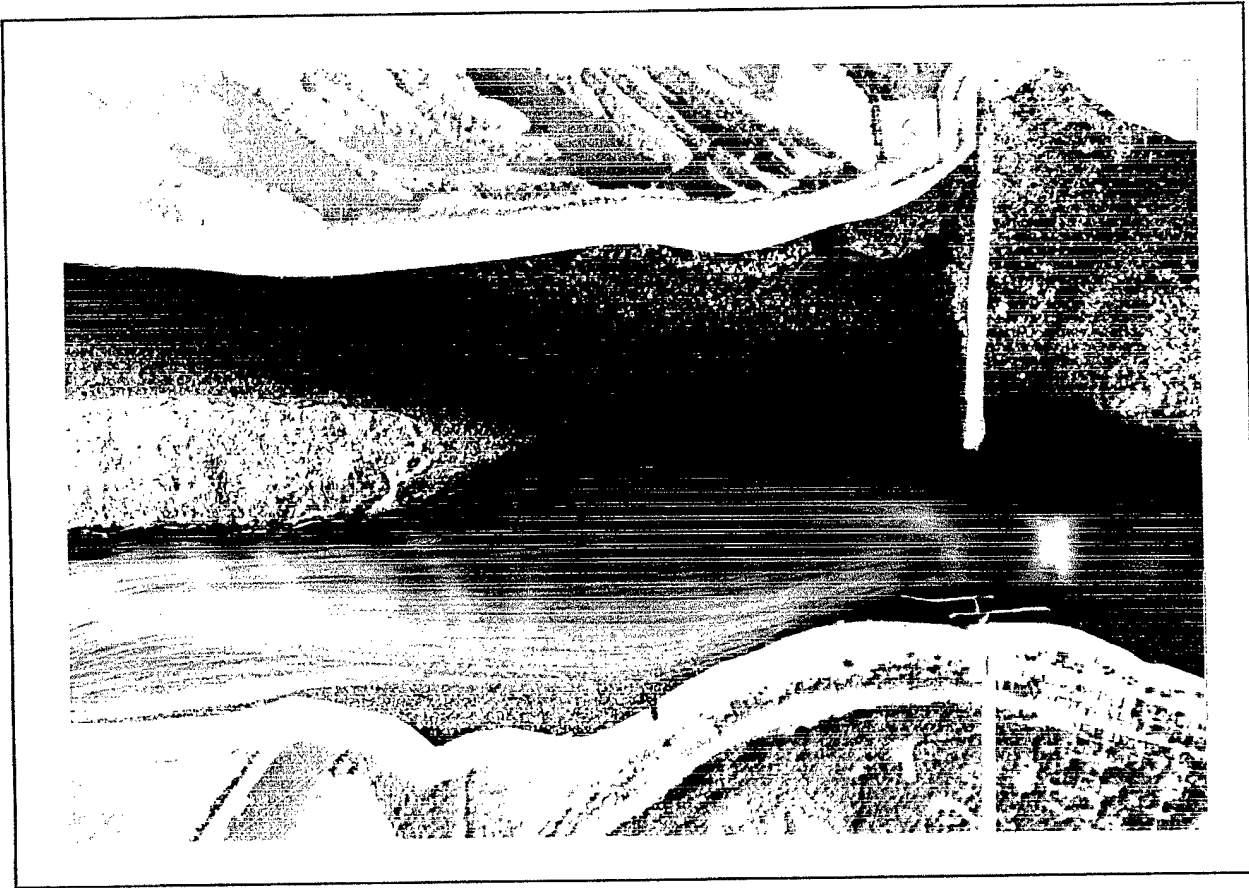
U.S. ARMY ENGINEER DISTRICT, ST. LOUIS  
CORPS OF ENGINEERS  
ST. LOUIS, MISSOURI

Lock and Dam #24, Micro Model Study  
Mississippi River Miles 271 - 277

Alternative S



PLATE NO. **64**



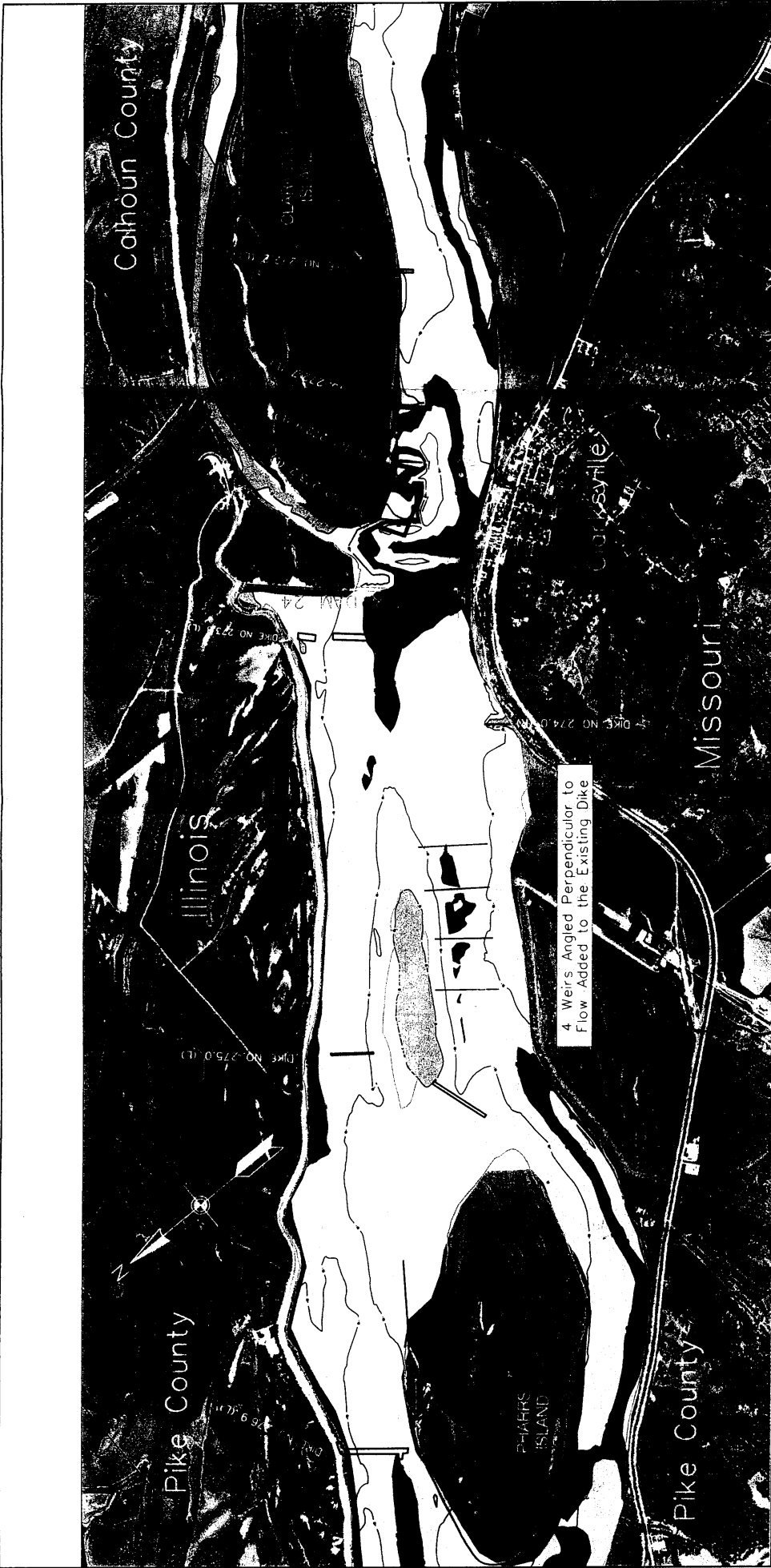
U.S. ARMY ENGINEER DISTRICT, ST. LOUIS  
CORPS OF ENGINEERS  
ST. LOUIS, MISSOURI

PREPARED BY D Gordon  
CHECKED BY R Dainroy

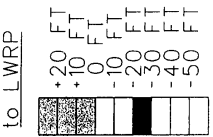
Lock and Dam 24 Micro Model Study  
Mississippi River Miles 271 - 277  
Flow Visualization - Alternative S

PLATE NO

65



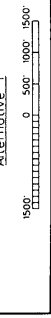
Elevations Referenced  
to LWRP



PREPARED BY: B. C. ...  
DRAWN BY: D. ...  
CHECKED BY: R. ...

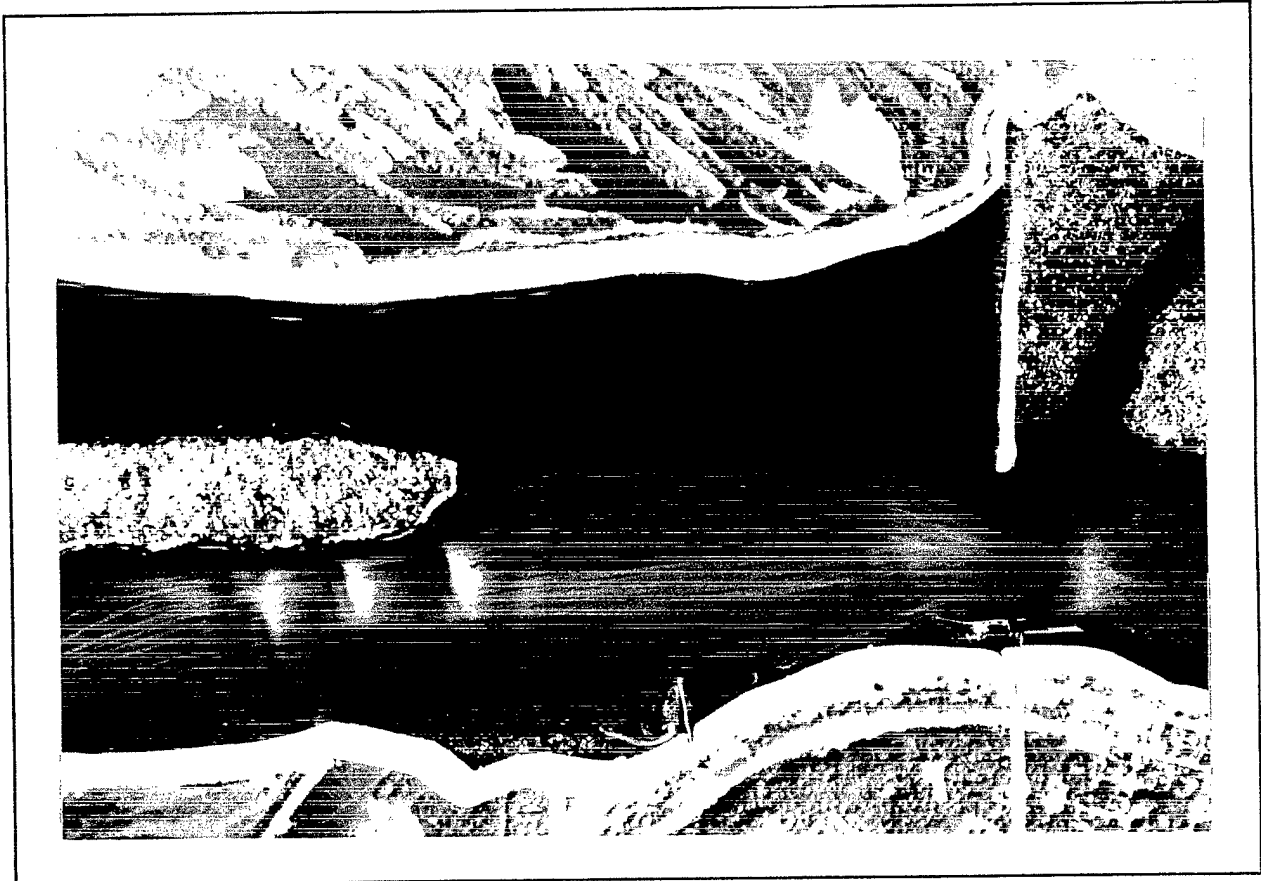
U.S. ARMY ENGINEER DISTRICT, ST. LOUIS  
CORPS OF ENGINEERS  
ST. LOUIS, MISSOURI

Lock and Dam #24, Micro Model Study  
Mississippi River Miles 271 - 277  
Alternative I



DESIGN FILE: D:\WORK\MODEL\LAD\24\...  
PLOT SCALE: 1" = 2000'

PLATE NO. 66



U.S ARMY ENGINEER DISTRICT, ST. LOUIS  
 CORPS OF ENGINEERS  
 ST. LOUIS, MISSOURI

PREPARED BY D. Gordon  
 CHECKED BY R. Davinroy

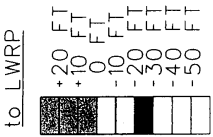
Lock and Dam 24 Micro Model Study  
 Mississippi River Miles 271 - 277  
Flow Visualization - Alternative I

PLATE NO

**67**



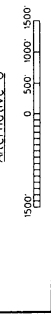
Elevations Referenced  
to LWRP



DESIGNED BY: D. G. GARDNER  
 DRAWN BY: D. G. GARDNER  
 CHECKED BY: R. B. BULLOCK

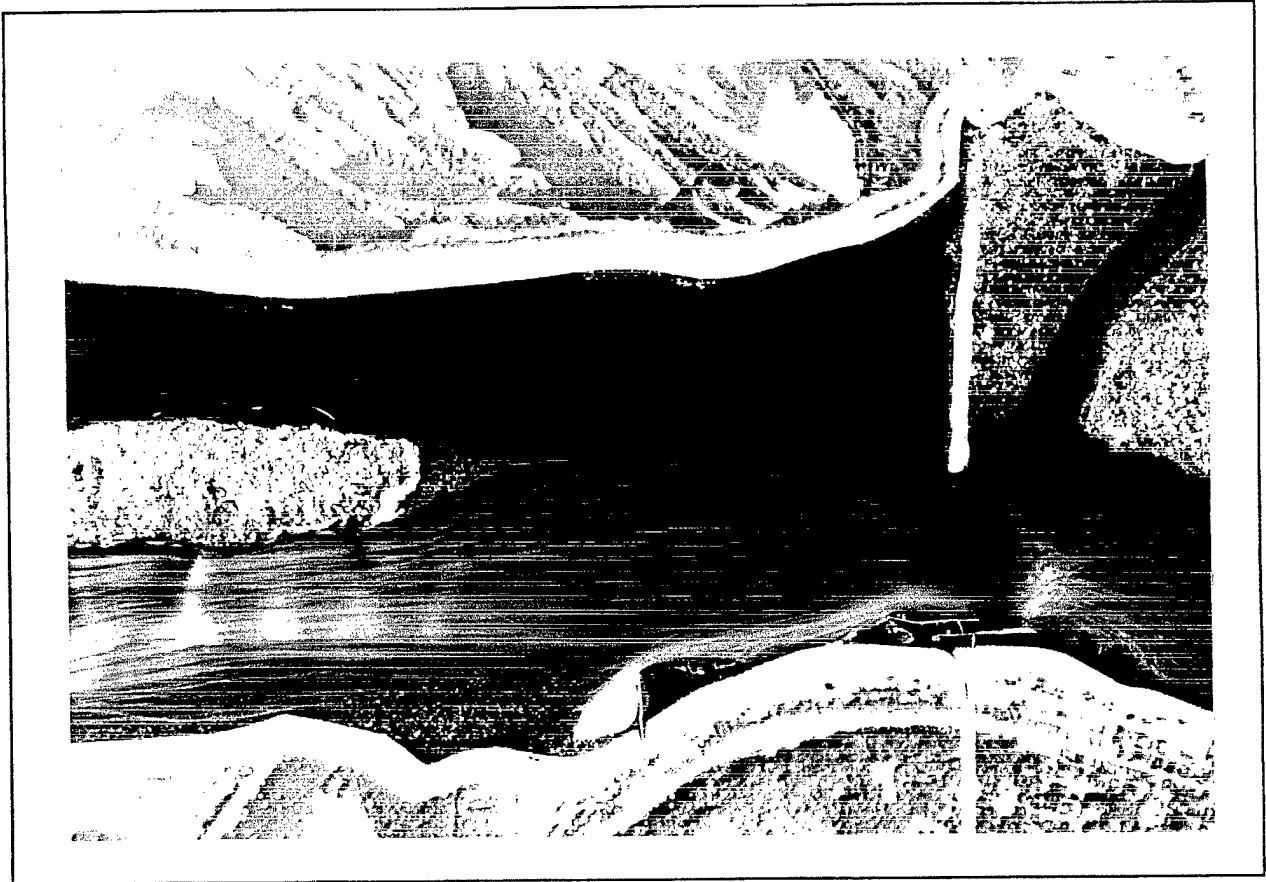
U.S. ARMY ENGINEER DISTRICT, ST. LOUIS  
 CORPS OF ENGINEERS  
 ST. LOUIS, MISSOURI

Lock and Dam #24 Micro Model Study  
 Mississippi River Miles 271 - 277  
 Alternative U



68

DESIGN FILE: D:\NONWORK\ALB\24\1  
 PLOT SCALE: 1" = 200'



PREPARED BY: D Gordon  
CHECKED BY: R Dainroy

U.S ARMY ENGINEER DISTRICT, ST. LOUIS  
CORPS OF ENGINEERS  
ST. LOUIS, MISSOURI

Lock and Dam 24 Micro Model Study  
Mississippi River Miles 271 - 277

Flow Visualization - Alternative U

PLATE NO

69



Calhoun County

Illinois

Pike County

Clarksville

Missouri

Pike County

DIKE NO. 276.9 (L)

DIKE NO. 275.0 (L)

DIKE NO. 273.4 (L)

DIKE NO. 272.2 (L)

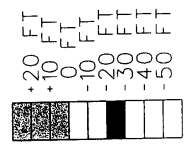
CLARA'SVILLE ISLAND

PHAHRS ISLAND

3 Bendway Weirs Added to the Existing Dike

DIKE NO. 274.0 (R)

Elevations Referenced to LWRP



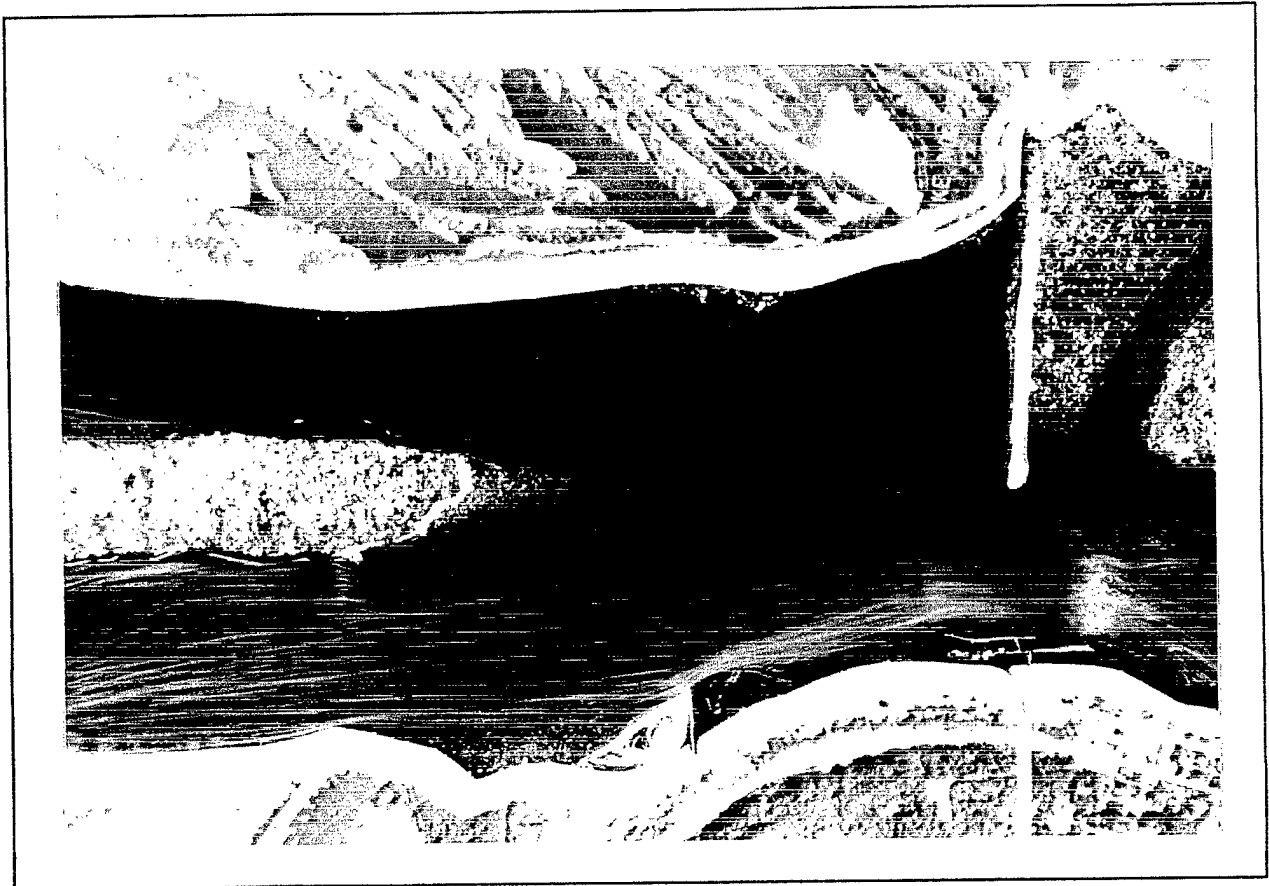
PREPARED BY: G. Gordon  
DRAWN BY: D. Gordon  
CHECKED BY: R. Murray

U.S. ARMY ENGINEER DISTRICT, ST. LOUIS  
CORPS OF ENGINEERS  
ST. LOUIS, MISSOURI

Lock and Dam #24 Micro Model Study  
Mississippi River Miles 271 - 277

Alternative V  
1500 0 500 1000 1500

ESCHER FLEISCHMANN & NEUBAUER  
SCALE 1" = 2000'  
DATE NO. 70



**U.S ARMY ENGINEER DISTRICT, ST. LOUIS  
CORPS OF ENGINEERS  
ST. LOUIS, MISSOURI**

PREPARED BY: D. Gordon  
CHECKED BY: R. DeVinney

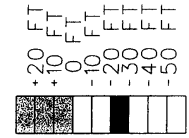
Lock and Dam 24 Micro Model Study  
Mississippi River Miles 271 - 277  
Flow Visualization - Alternative V

PLATE NO

**71**



Elevations Referenced to LWRP



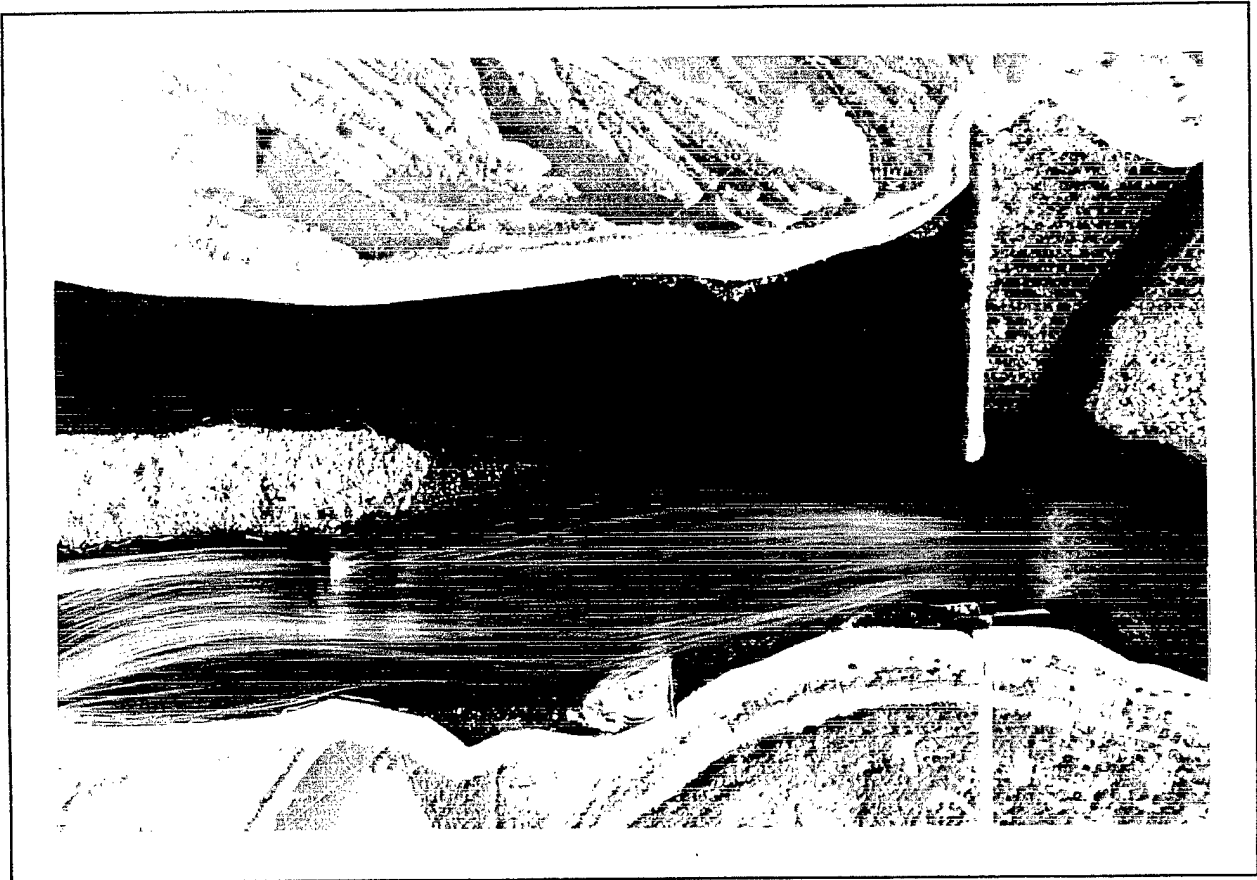
**LWRP**  
 PREPARED BY: D. Gordon  
 DRAWN BY: S. Gordon  
 CHECKED BY: R. Bennett

U.S. ARMY ENGINEER DISTRICT, ST. LOUIS  
 CORPS OF ENGINEERS  
 ST. LOUIS, MISSOURI

Lock and Dam #24 Micro Model Study  
 Mississippi River Miles 271 - 277  
 Alternative W

0 500 1000 1500  
 DESIGN FILE: D-1000/MDL/ALM24A  
 PLOT SCALE: 1" = 200'

PLATE NO. **72**



U.S ARMY ENGINEER DISTRICT, ST. LOUIS  
CORPS OF ENGINEERS  
ST. LOUIS, MISSOURI

PREPARED BY: D. Gordon  
CHECKED BY: R. Davrney

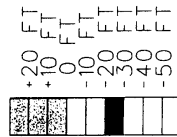
Lock and Dam 24 Micro Model Study  
Mississippi River Miles 271 - 277  
Flow Visualization - Alternative W

PLATE NO

73



Elevations Referenced  
to LWRP



U.S. ARMY ENGINEER DISTRICT, ST. LOUIS  
CORPS OF ENGINEERS  
ST. LOUIS, MISSOURI

Lock and Dam #24 Micro Model Study  
Mississippi River Miles 271 - 277  
Alternative X

DESIGN FILE NUMBER: 1440-244  
PLOT SCALE: 1" = 2000'

PLATE NO  
**74**



U.S ARMY ENGINEER DISTRICT, ST. LOUIS  
CORPS OF ENGINEERS  
ST. LOUIS, MISSOURI

PREPARED BY: D. Gordon  
CHECKED BY: R. Dainroy

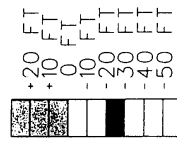
Lock and Dam 24 Micro Model Study  
Mississippi River Miles 271 - 277  
Flow Visualization - Alternative X

PLATE NO

75



Elevations Referenced  
to LWRP



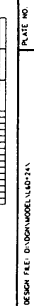
U.S. ARMY ENGINEER DISTRICT, ST. LOUIS  
CORPS OF ENGINEERS  
ST. LOUIS, MISSOURI

PREPARED BY: D. Corbin  
DESIGNED BY: D. Corbin  
CHECKED BY: R. Jarbo

Lock and Dam #24 Micro Model Study  
Mississippi River Miles 271 - 277

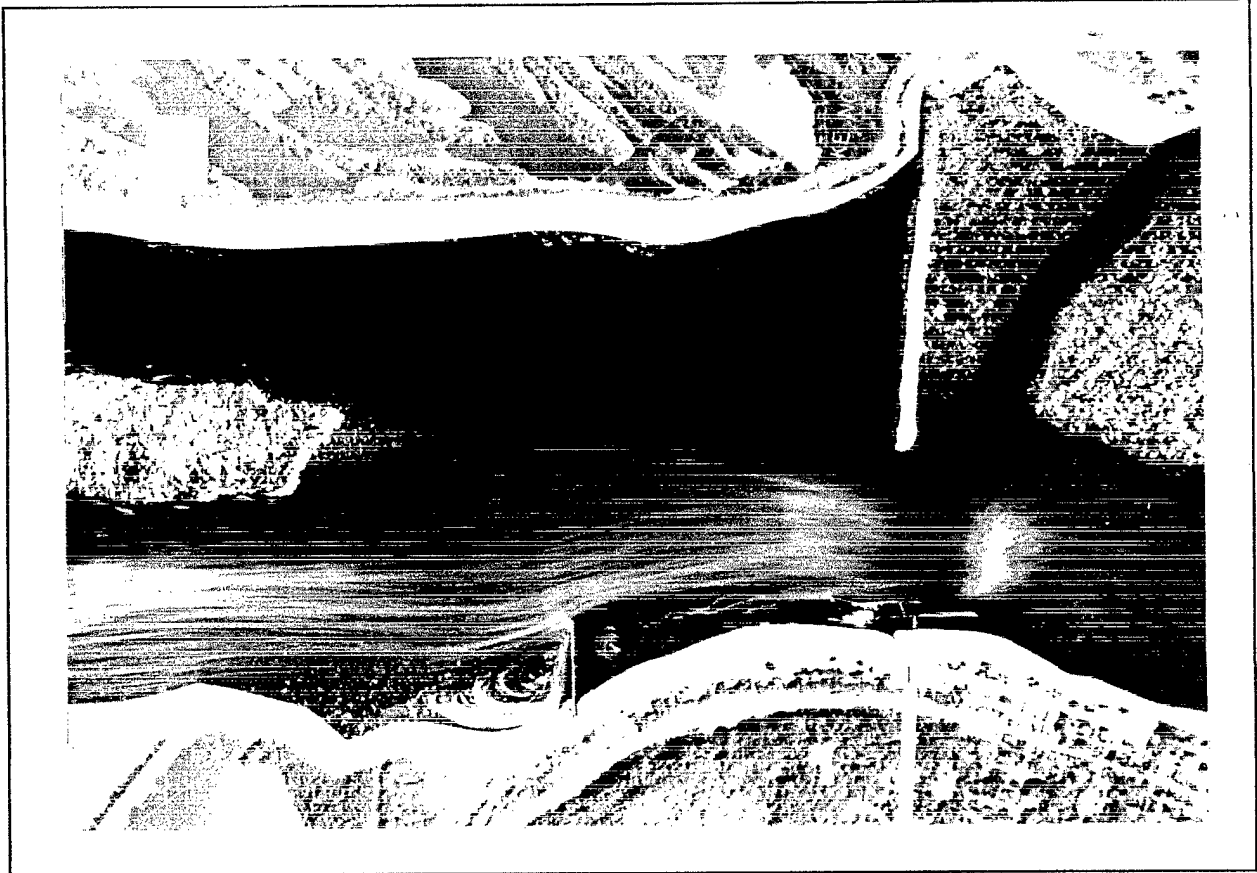
Alternative Y

1500' 0' 500' 1000' 1500'



76

DESIGN FILE: D:\SWM\MOBILE\LD24\Y  
PLOT SCALE: 1" = 2000'



U.S ARMY ENGINEER DISTRICT, ST. LOUIS  
CORPS OF ENGINEERS  
ST. LOUIS, MISSOURI

PREPARED BY: D. Gordon  
CHECKED BY: R. Denny

Lock and Dam 24 Micro Model Study  
Mississippi River Miles 271 - 277

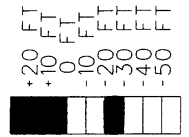
Flow Visualization - Alternative Y


PLATE NO

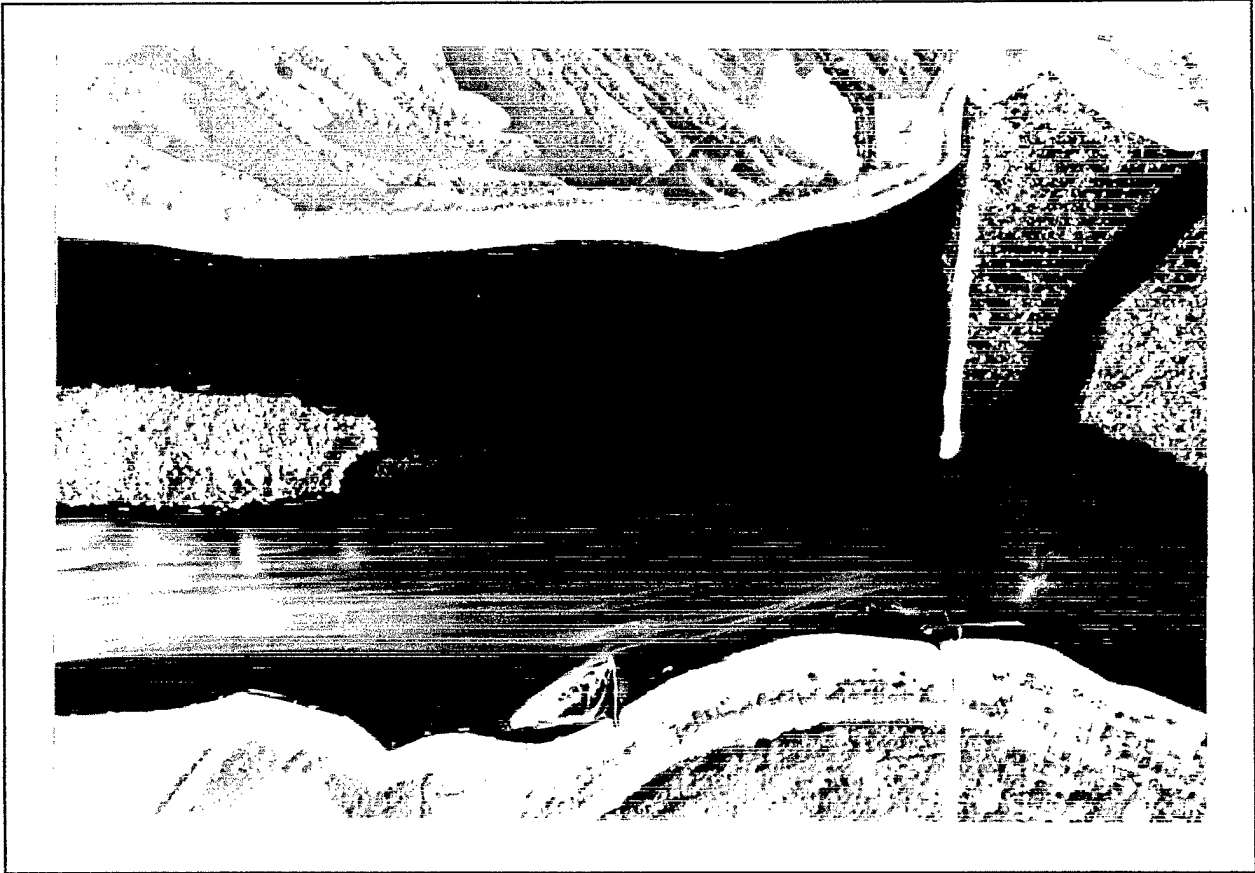
77



Elevations Referenced  
to LWRP



	<p>U.S. ARMY ENGINEER DISTRICT, ST. LOUIS CORPS OF ENGINEERS ST. LOUIS, MISSOURI</p>
<p>DESIGNED BY: D. Corbett DRAWN BY: D. Corbett CHECKED BY: R. Bennett</p>	<p>Lock and Dam #24 Micro Model Study Mississippi River Miles 271 - 277 Alternative Z-0</p>
<p>1500 0 500' 1000' 1500'</p>	<p>DESIGN FILE: D:\DGM\MODEL\LEAD-24\1 PLOT SCALE: 1" = 1000'</p>
<p>PLATE NO</p>	<p>78</p>



U.S ARMY ENGINEER DISTRICT, ST. LOUIS  
CORPS OF ENGINEERS  
ST. LOUIS, MISSOURI

PREPARED BY: D. Gordon  
CHECKED BY: R. Davinoy

Lock and Dam 24 Micro Model Study  
Mississippi River Miles 271 - 277  
Flow Visualization - Alternative Z-0

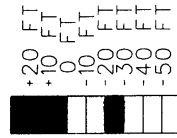
PLATE NO

79

Calhoun County



Elevations Referenced  
to LWRP



PREPARED BY: D. Carlson  
DRAWN BY: D. Carlson  
CHECKED BY: R. Shively

U.S. ARMY ENGINEER DISTRICT, ST. LOUIS  
CORPS OF ENGINEERS  
ST. LOUIS, MISSOURI

Lock and Dam #24 Micro Model Study  
Mississippi River Miles 271 - 277  
Alternative Z-1

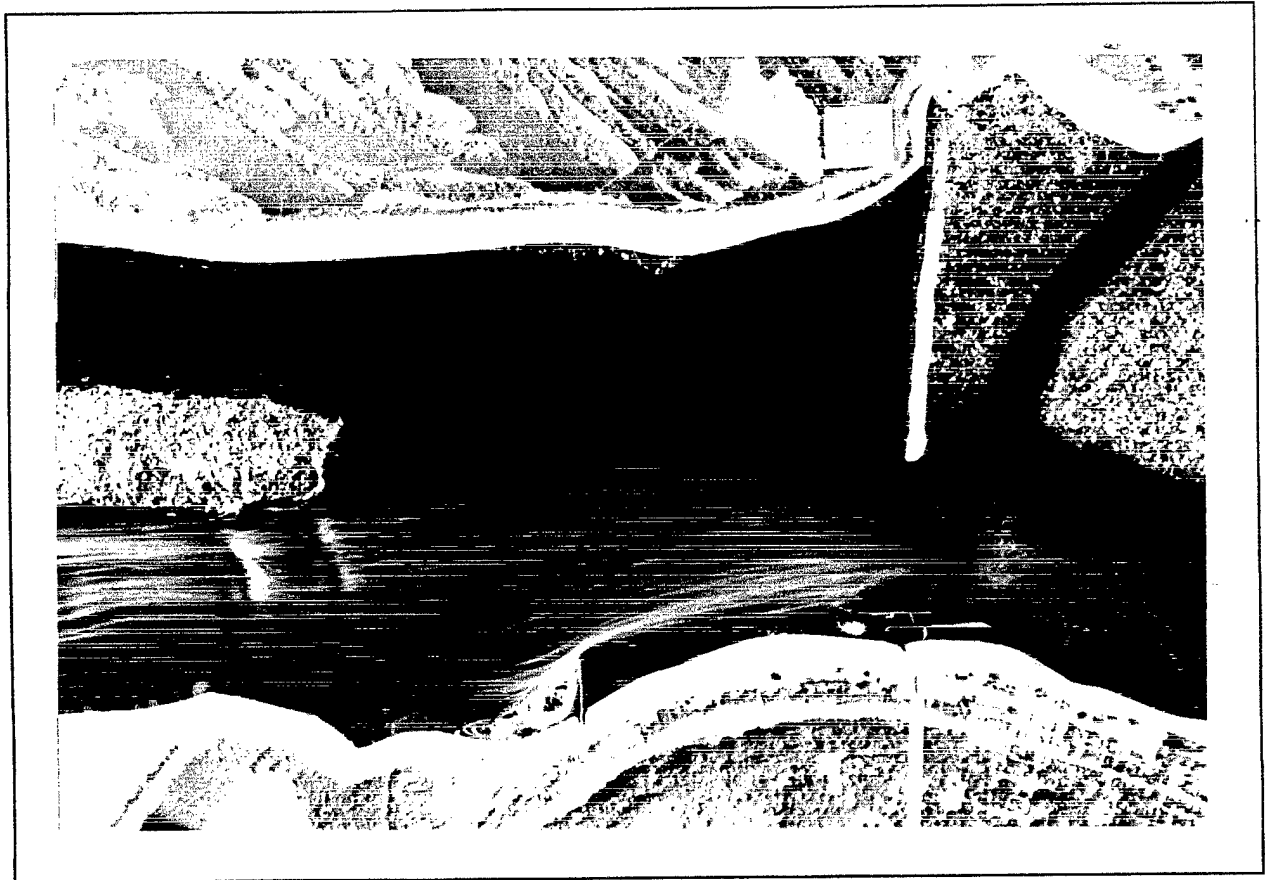
1500' 0 500' 1000' 1500'

DESIGN FILE: D:\NONMODEL\ALDP24\

PLATE NO.

80

PLAT SCALE: P - 2000



U.S ARMY ENGINEER DISTRICT, ST. LOUIS  
CORPS OF ENGINEERS  
ST. LOUIS, MISSOURI

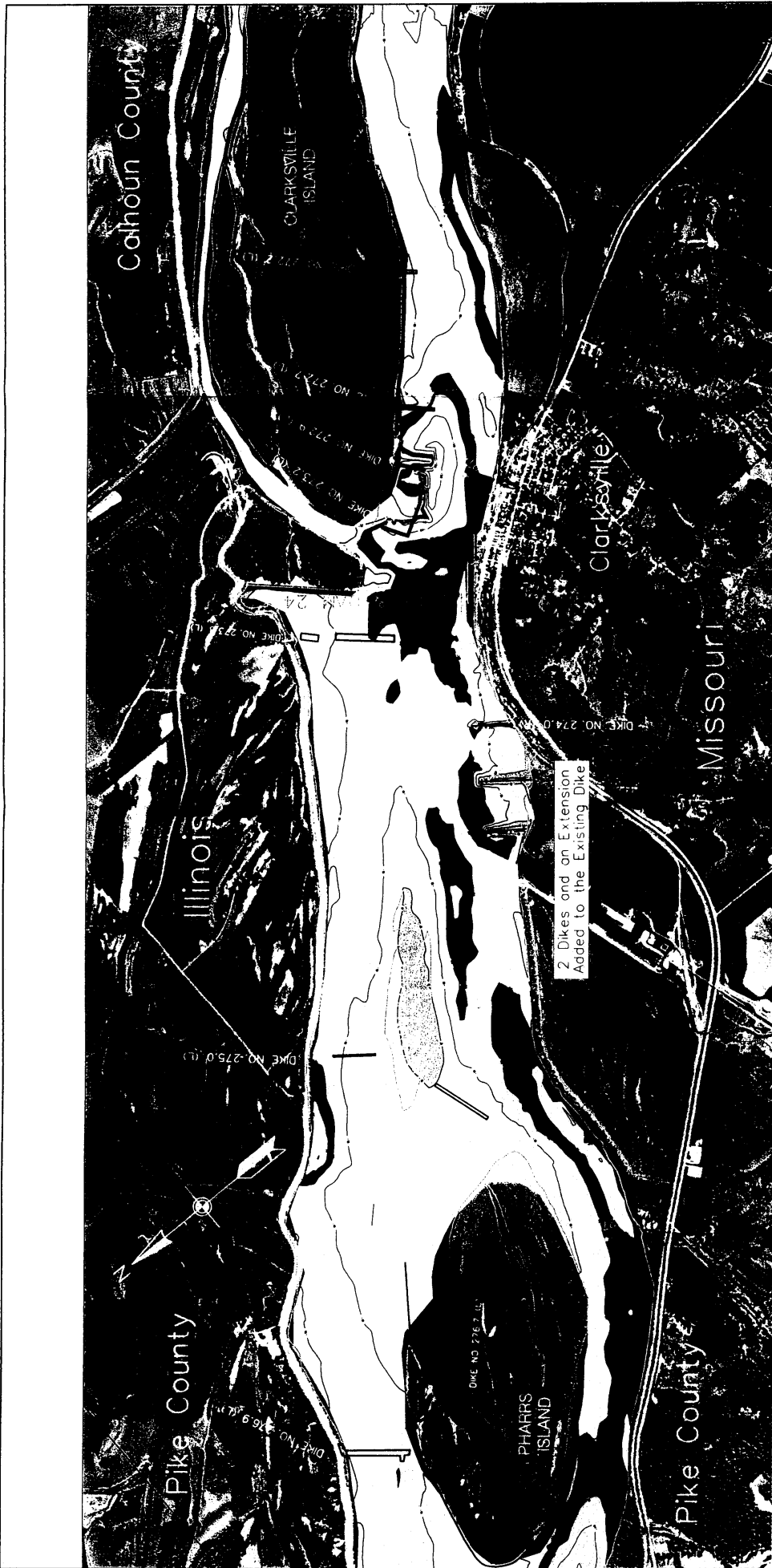
PREPARED BY: D. Gordon  
CHECKED BY: R. Dainoff

Lock and Dam 24 Micro Model Study  
Mississippi River Miles 271 - 277

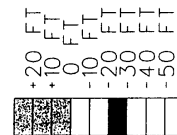
Flow Visualization - Alternative Z-1

PLATE NO

81



Elevations Referenced  
to LWRP



DESIGNED BY: D. Geron  
DRAWN BY: D. Geron  
CHECKED BY: R. Dornoy

U.S. ARMY ENGINEER DISTRICT, ST. LOUIS  
CORPS OF ENGINEERS  
ST. LOUIS, MISSOURI

Lock and Dam #24 Micro Model Study  
Mississippi River Miles 271 - 277

Alternative Z-2

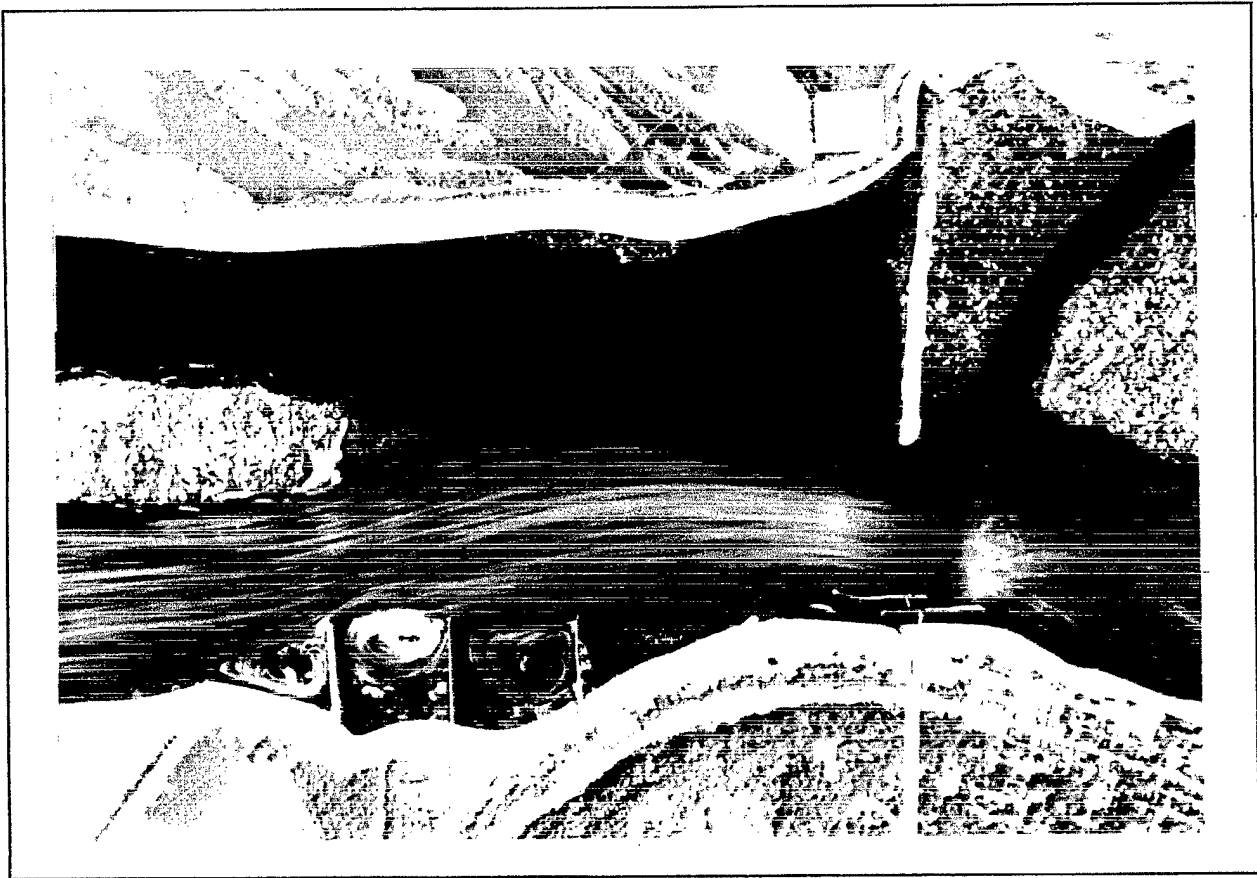
1:500 0 500 1000 1500

DESIGN FILE: 8-1000-NOV-14-07-24

PLOT SCALE: 1" = 2000'

PLATE NO

82



U.S ARMY ENGINEER DISTRICT, ST. LOUIS  
CORPS OF ENGINEERS  
ST. LOUIS, MISSOURI

PREPARED BY: D. Gordon  
CHECKED BY: R. Downey

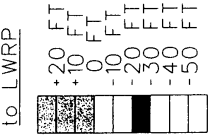
Lock and Dam 24 Micro Model Study  
Mississippi River Miles 271 - 277  
Flow Visualization - Alternative Z-2

PLATE NO

83



Elevations Referenced  
to LWRP

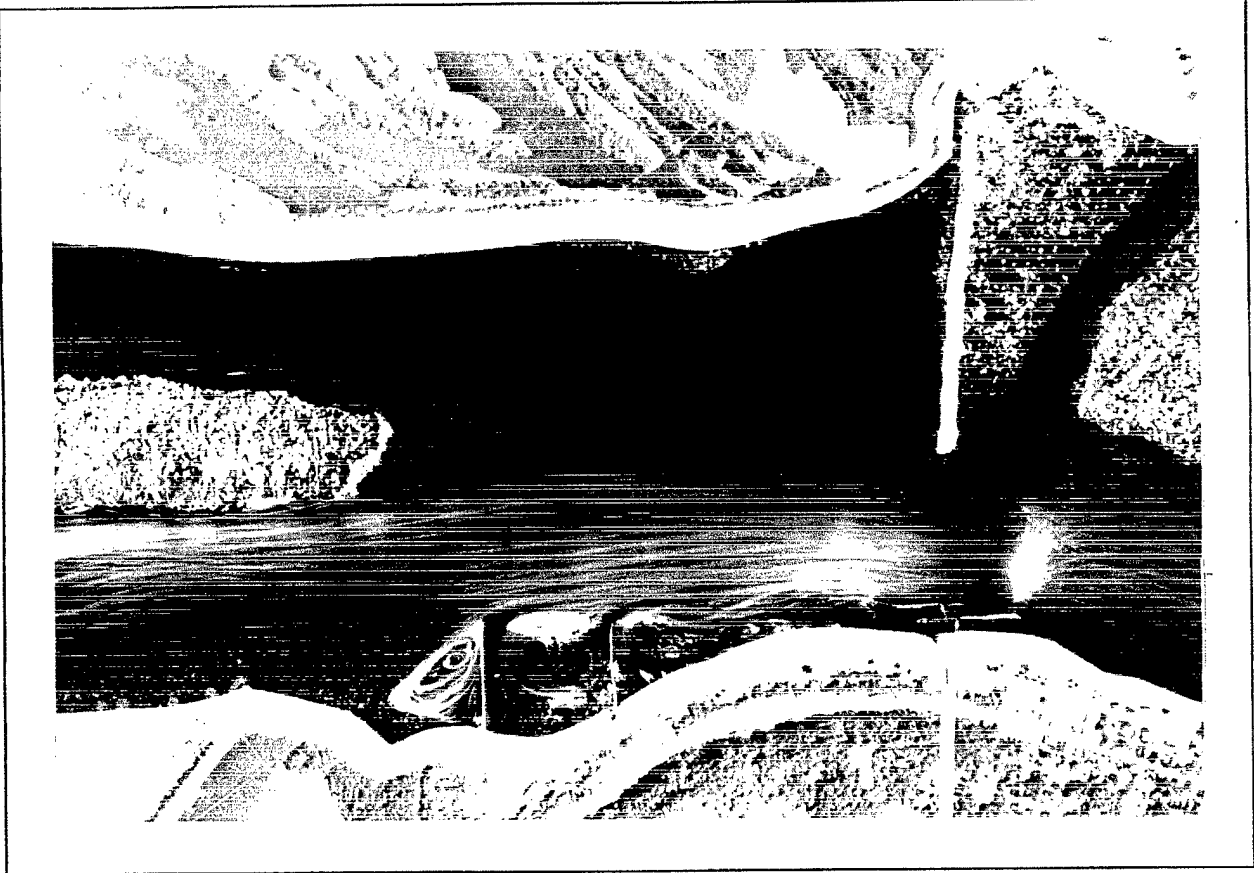


U.S. ARMY ENGINEER DISTRICT, ST. LOUIS  
CORPS OF ENGINEERS  
ST. LOUIS, MISSOURI

Lock and Dam #24 Micro Model Study  
Mississippi River Miles 271 - 277

Alternative Z-3  
1500 0 500 1000 1500

DESIGN FILE: D:\304\MODEL\LIB\271A  
PLOT SCALE: 1" = 2000'  
PLATE NO: **84**



U.S ARMY ENGINEER DISTRICT, ST. LOUIS  
CORPS OF ENGINEERS  
ST. LOUIS, MISSOURI

PREPARED BY: D. Gordon  
CHECKED BY: R. Damroy

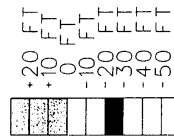
Lock and Dam 24 Micro Model Study  
Mississippi River Miles 271 - 277  
Flow Visualization - Alternative Z-3

PLATE NO

85



Elevations Referenced  
to LWRP



PREPARED BY: D. Gordon  
DRAWN BY: D. Gordon  
CHECKED BY: R. Damsky

U.S. ARMY ENGINEER DISTRICT, ST. LOUIS  
CORPS OF ENGINEERS  
ST. LOUIS, MISSOURI

Lock and Dam #24 Micro Model Study  
Mississippi River, Miles 271 - 277

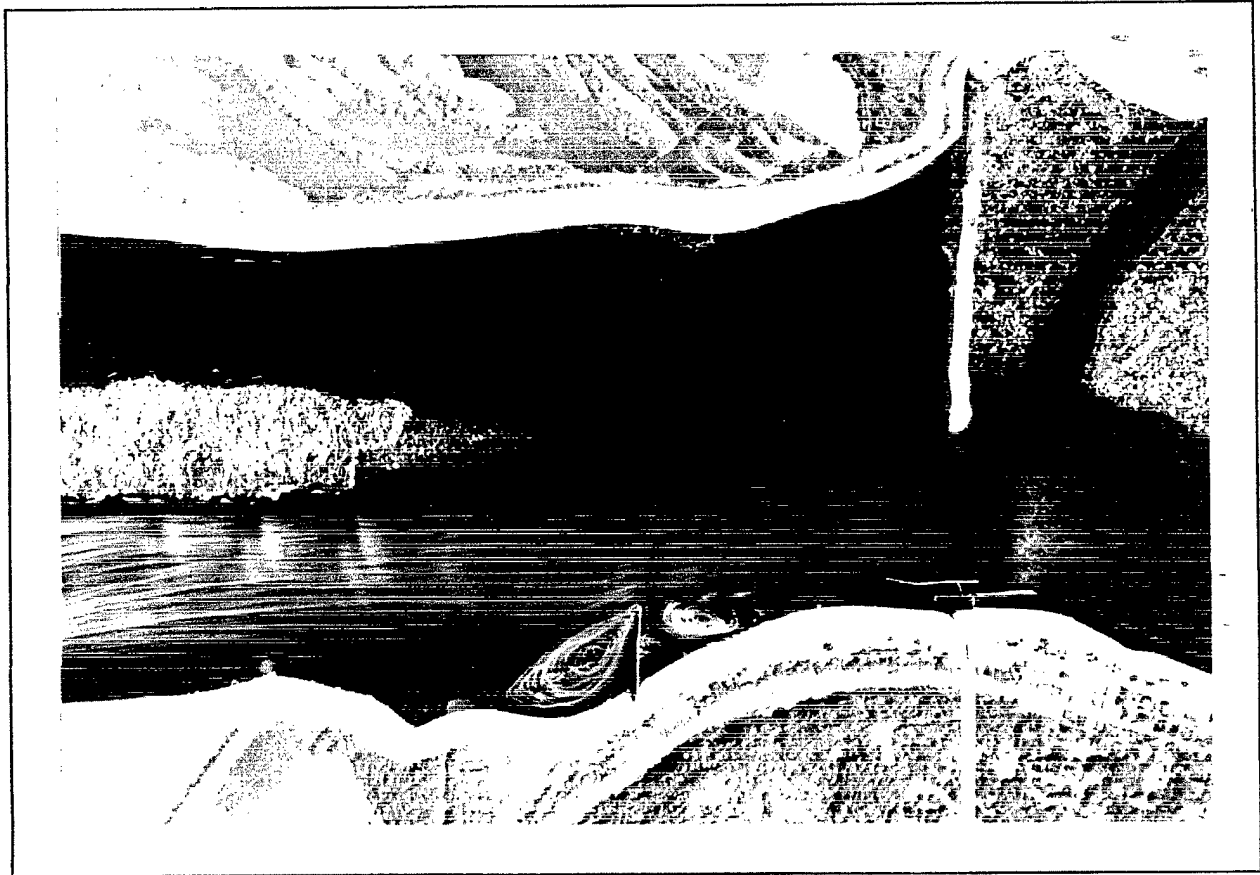
Alternative Z-4

1500' 0' 500' 000' 1500'

DESIGN FILE: D:\GMODEL\LAD\24\

PLOT SCALE: 1" = 2000'

PLATE NO. 86



U.S. ARMY ENGINEER DISTRICT, ST. LOUIS  
CORPS OF ENGINEERS  
ST. LOUIS, MISSOURI

PREPARED BY: D. Gordon  
CHECKED BY: R. Darnley

Lock and Dam 24 Micro Model Study  
Mississippi River Miles 271 - 277  
Flow Visualization - Alternative Z-4

PLATE NO

87