

AD \_\_\_\_\_

Award Number DAMD17-98-1-8199

TITLE: Regulatory Pathways Involved in Heregulin-Induced Proliferation and Differentiation of Human Breast Cancer Cells

PRINCIPAL INVESTIGATOR: Morven C. Shearer

CONTRACTING ORGANIZATION: University of Iowa  
Iowa City, Iowa 52242-1320

REPORT DATE: May 1999

TYPE OF REPORT: Annual Summary

PREPARED FOR: U.S. Army Medical Research and Materiel Command  
Fort Detrick, Maryland 21702-5012

DISTRIBUTION STATEMENT: Approved for Public Release;  
Distribution Unlimited

The views, opinions and/or findings contained in this report are those of the author(s) and should not be construed as an official Department of the Army position, policy or decision unless so designated by other documentation.

20000828 193

# REPORT DOCUMENTATION PAGE

*Form Approved*  
OMB No. 0704-0188

Public reporting burden for this collection of information is estimated to average 1 hour per response, including the time for reviewing instructions, searching existing data sources, gathering and maintaining the data needed, and completing and reviewing the collection of information. Send comments regarding this burden estimate or any other aspect of this collection of information, including suggestions for reducing this burden, to Washington Headquarters Services, Directorate for Information Operations and Reports, 1215 Jefferson Davis Highway, Suite 1204, Arlington, VA 22202-4302, and to the Office of Management and Budget, Paperwork Reduction Project (0704-0188), Washington, DC 20503.

1. AGENCY USE ONLY <i>(Leave blank)</i>	2. REPORT DATE May 1999	3. REPORT TYPE AND DATES COVERED Annual Summary (6 Apr 98 - 5 Apr 99)	
4. TITLE AND SUBTITLE Regulatory Pathways Involved in Heregulin-Induced Proliferation and Differentiation of Human Breast Cancer Cells		5. FUNDING NUMBERS DAMD17-98-1-8199	
6. AUTHOR(S) Morven C. Shearer			
7. PERFORMING ORGANIZATION NAME(S) AND ADDRESS(ES) University of Iowa Iowa City, Iowa 52242-1320		8. PERFORMING ORGANIZATION REPORT NUMBER	
9. SPONSORING / MONITORING AGENCY NAME(S) AND ADDRESS(ES) U.S. Army Medical Research and Materiel Command Fort Detrick, Maryland 21702-5012		10. SPONSORING / MONITORING AGENCY REPORT NUMBER	
11. SUPPLEMENTARY NOTES			
12a. DISTRIBUTION / AVAILABILITY STATEMENT Approved for Public Release; Distribution Unlimited		12b. DISTRIBUTION CODE	
13. ABSTRACT <i>(Maximum 200 words)</i>  The polypeptide heregulin has been shown to reverse the transformed phenotype of certain cultured breast cancer cell lines, and hence convert them to more normal, milk-producing cells. In contrast, heregulin is reported to induce proliferation of other breast cancer cell lines. The mechanism by which heregulin alternatively stimulates the proliferation or differentiation of human breast cancer cells was investigated. In the first year of funding, efforts were made to develop assays for quantifying the relative state of differentiation of breast cancer cells. Lipid droplet formation, indicative of the formation of milk by differentiated breast cells, was assayed by light microscopy with the stain Oil Red-O. Production of milk protein was assayed by Western immunoblotting of cell lysates with an antibody recognizing casein. E-cadherin, a cell adhesion molecule expressed at high levels in differentiated cells and low levels in transformed cells, was also detected by Western immunoblotting of breast cancer cell lysates. Although each of these assays should be a valid indicator, we have so far not observed consistent heregulin-dependent changes in the differentiation status of the various breast cancer cell lines examined. Future studies will determine whether specific heregulin-induced intracellular signaling pathways can trigger the differentiation of breast cancer cells.			
14. SUBJECT TERMS Breast Cancer, heregulin, neuregulin, ErbB, differentiation			15. NUMBER OF PAGES 11
			16. PRICE CODE
17. SECURITY CLASSIFICATION OF REPORT Unclassified	18. SECURITY CLASSIFICATION OF THIS PAGE Unclassified	19. SECURITY CLASSIFICATION OF ABSTRACT Unclassified	20. LIMITATION OF ABSTRACT Unlimited

FOREWORD

Opinions, interpretations, conclusions and recommendations are those of the author and are not necessarily endorsed by the U.S. Army.

\_\_\_\_\_ Where copyrighted material is quoted, permission has been obtained to use such material.

\_\_\_\_\_ Where material from documents designated for limited distribution is quoted, permission has been obtained to use the material.

\_\_\_\_\_ Citations of commercial organizations and trade names in this report do not constitute an official Department of Army endorsement or approval of the products or services of these organizations.

\_\_\_\_\_ In conducting research using animals, the investigator(s) adhered to the "Guide for the Care and Use of Laboratory Animals," prepared by the Committee on Care and use of Laboratory Animals of the Institute of Laboratory Resources, national Research Council (NIH Publication No. 86-23, Revised 1985).

JJK For the protection of human subjects, the investigator(s) adhered to policies of applicable Federal Law 45 CFR 46.

N/A In conducting research utilizing recombinant DNA technology, the investigator(s) adhered to current guidelines promulgated by the National Institutes of Health.

N/A In the conduct of research utilizing recombinant DNA, the investigator(s) adhered to the NIH Guidelines for Research Involving Recombinant DNA Molecules.

N/A In the conduct of research involving hazardous organisms, the investigator(s) adhered to the CDC-NIH Guide for Biosafety in Microbiological and Biomedical Laboratories.

John J. Holland 4/4/99  
PI - Signature Date  
(for Marvin Sheerer)

**TABLE OF CONTENTS**

	Page
Front Cover . . . . .	1
SF 298 Report Documentation Page . . . . .	2
Foreword . . . . .	3
Table of Contents . . . . .	4
Introduction . . . . .	5
Body . . . . .	5-9
Conclusions . . . . .	9
References . . . . .	9-10
Appendices . . . . .	11

## INTRODUCTION

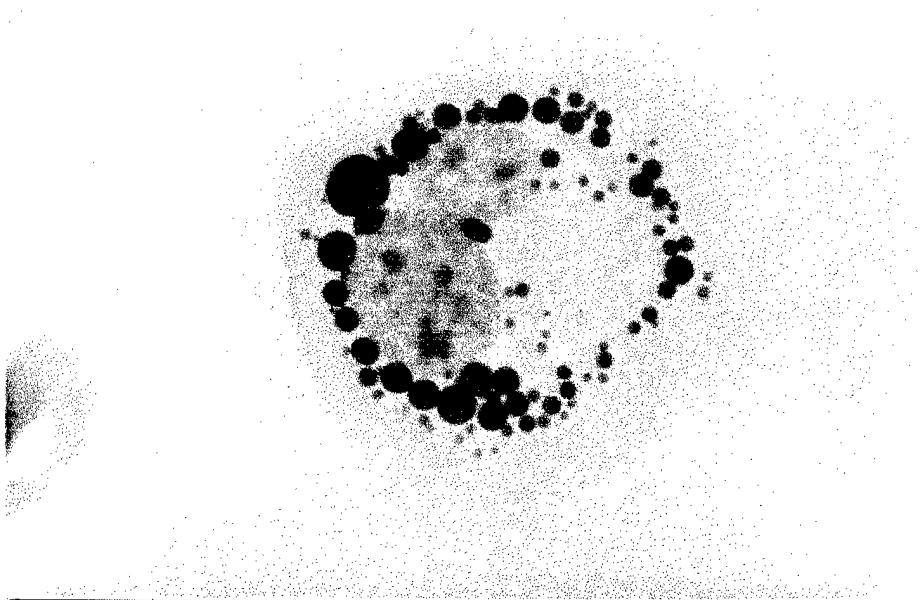
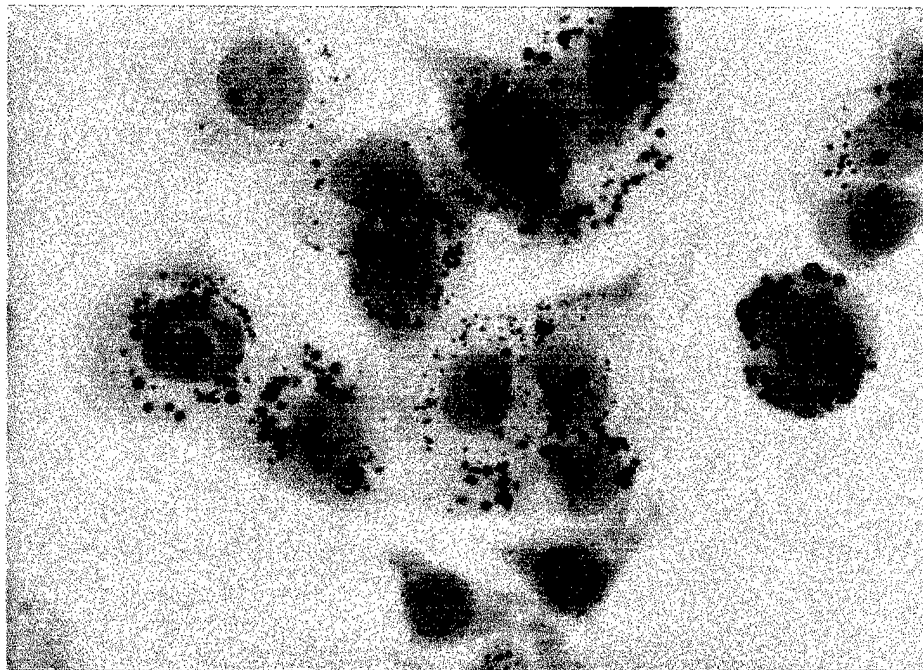
Breast cancer cells have been observed to express abnormally high levels of receptor proteins in the ErbB family, which includes the EGF receptor, ErbB2, ErbB3 and ErbB4 (also designated as HER1-HER4, respectively) (1-4). High levels of EGF receptor and ErbB2 expression in tumor cells have been considered indicators of poor prognosis (5). Given that these receptors activate mitogenic signaling pathways, it is possible that they play a role in the abnormal proliferation of breast cancer cells. The polypeptide heregulin (6) is secreted from breast cancer cells (7), and has been shown to activate ErbB2, ErbB3 and ErbB4 receptor proteins (8-11). Whereas ErbB4 can respond to heregulin independently, ErbB2 and ErbB3 have been shown to function together as a coreceptor for heregulin (12). With the discovery of heregulin (originally designated as Neu differentiation factor) came the observation that this factor could induce the re-differentiation of certain cultured breast cancer cell lines, specifically the cell lines MDA-MB-453 and AU-565 (13). Hence, in response to heregulin, these breast cancer cells show a flatter morphology, the presence of lipid droplets, and elevated levels of the milk protein casein. The observation that heregulin can alternatively induce either the proliferation or the re-differentiation of breast cancer cells raises numerous questions about the mechanisms by which this ErbB receptor ligand activates cellular responses. Presumably, clarifying these cellular control mechanisms would lead to a better understanding of breast cancer development, which in turn could lead to the discovery of novel therapeutic or prophylactic measures. Multiple signaling pathways are engaged by ErbB family receptors in response to heregulin. The focus of the proposed research is to identify those signaling pathways that alternatively elicit either the proliferation or differentiation of breast cancer cells.

## BODY

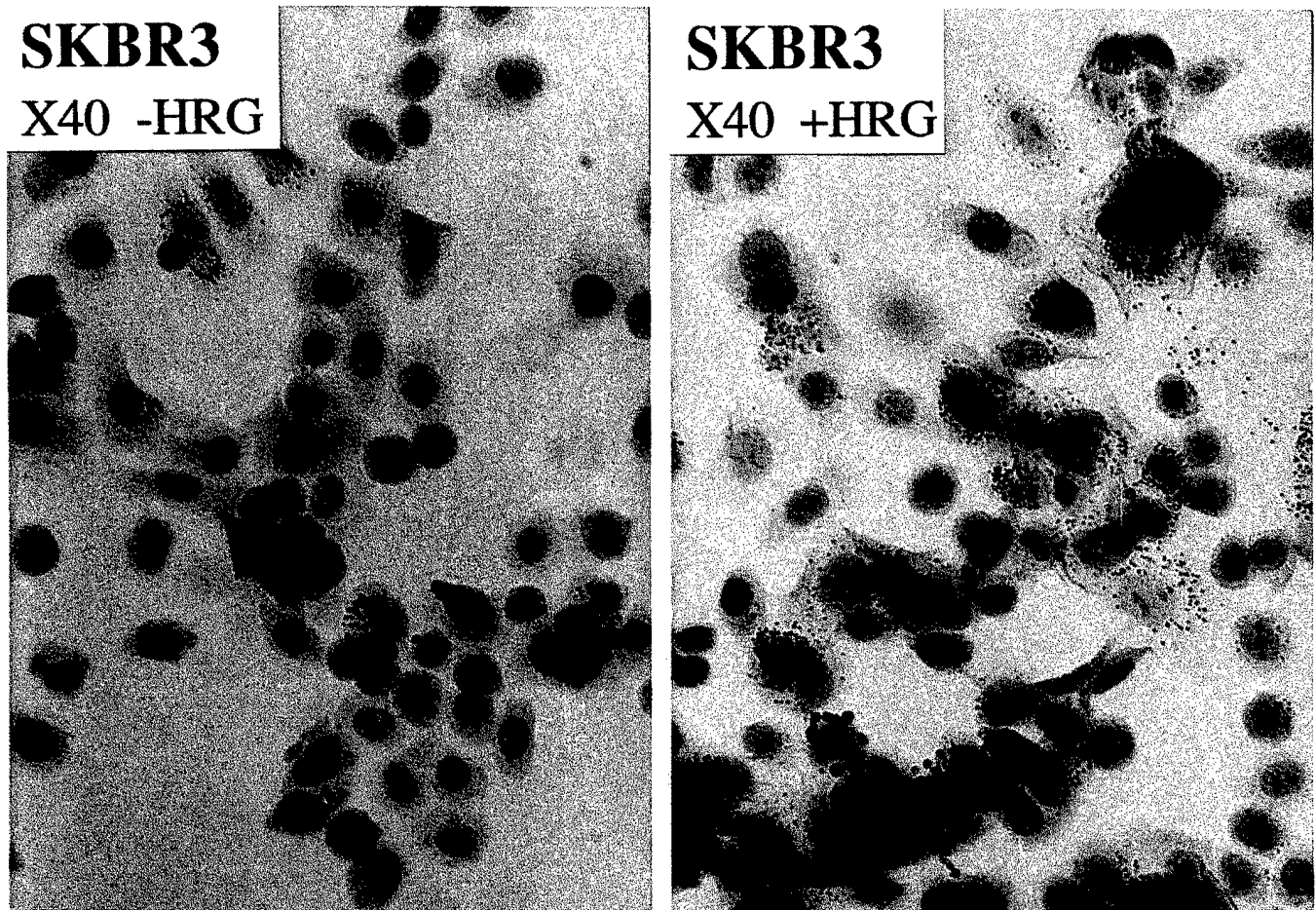
In the first year of funding, progress was made towards the development of methods for assaying the relative state of differentiation of cultured breast cancer cells. Two of these methods, Oil Red-O staining of lipid droplets, which represents the production of milk lipids, and casein immunoblotting, which detects the production of milk proteins, have been previously used to study breast cancer cells. A third method, immunoblotting of E-cadherin, detects the expression of a cell adhesion molecule known to be generally expressed in differentiated cells, and attenuated in expression with their cancerous transformation, the loss of cell adhesion being associated with the progressive invasion, migration and metastasis of cancer cells.

Lipid droplets are a relatively obvious characteristic of normal secretory breast epithelial cells, and are present in transformed cells to a greater or lesser extent, depending upon their relative state of de-differentiation. Figure 1 shows typical results of our Oil Red-O staining assay of lipid droplets in cultured cells. As is readily seen in the light microscope, cells in the MDA-MB-468 breast cancer line are relatively differentiated and show abundant lipid droplets. The effect of heregulin on the state of differentiation of various breast cancer cell lines was also examined by use of the Oil Red-O assay. Figures 2 and 3 show the effect of heregulin treatment on two representative cell lines, SK-BR-3 and T47D. To some extent, an eight-day exposure of cells to heregulin enhance the number and density of Oil Red-O-staining lipid droplets. However, we could not demonstrate a statistically significant enhancement of lipid droplet formation in any of the cell lines examined, which included the MDA-MB-453 cell line with which the differentiating effects of heregulin were first observed. Attempts to enhance the differentiating effects of heregulin by variation of culture conditions and heregulin exposure time were also unsuccessful. We concluded that observation of the differentiating effects of heregulin, as previously observed with the MDA-MB-453 cell line, must depend very subtly on cell culture conditions or other undiscovered parameters.

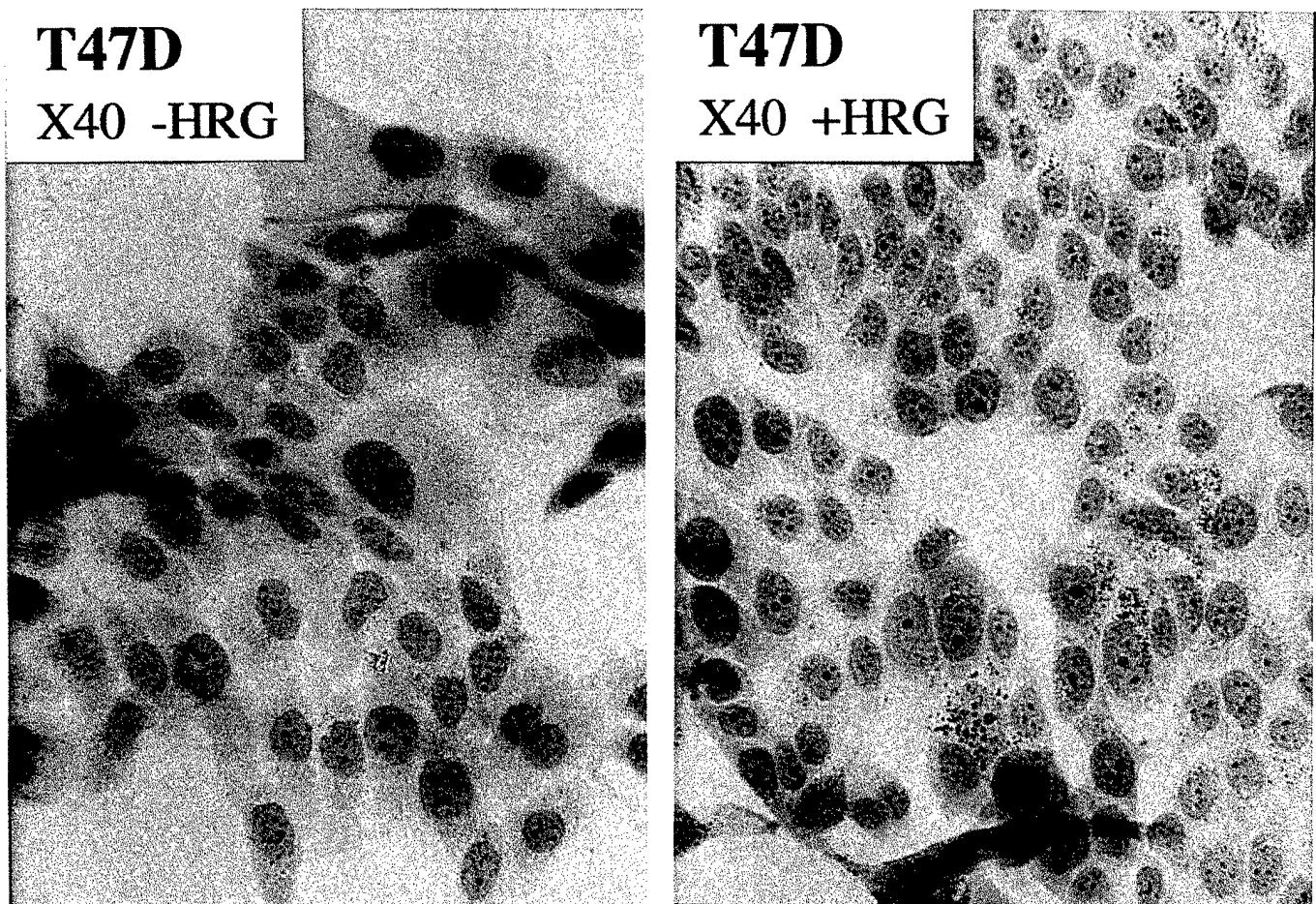
Two other assays of cellular differentiation were also developed. These involved the immunologic detection of  $\beta$ -casein (an abundant milk protein) and E-cadherin (a cell adhesion molecule generally elevated in differentiated cells). While we could readily detect expression of both  $\beta$ -casein and E-cadherin by Western immunoblotting, we could not detect heregulin-



**Figure 1. Oil Red-O staining of lipid droplets in the human breast cancer cell line MDA-MB-468.** Lipid droplets indicative of the production of milk lipids and the relative state of differentiation of cultured breast cancer cells were stained with the dye Oil Red-O and visualized by light microscopy. Shown are representative images of MDA-MB-468 at cells at 80x (upper panel) and 120x (lower panel) magnification.



**Figure 2. Effect of heregulin treatment on lipid droplet formation in representative human breast cancer cell lines.** The SK-BR-3 human breast cancer cell line was cultured for eight days in the presence or absence of 1 nM heregulin- $\beta$ 1 as indicated, after which time the presence of lipid droplets was detected by Oil Red-O staining. Results are representative of several fields of cells examined.



**Figure 3. Effect of heregulin treatment on lipid droplet formation in representative human breast cancer cell lines.** The T47D human breast cancer cell line was cultured for eight days in the presence or absence of 1 nM heregulin- $\beta$ 1 as indicated, after which time the presence of lipid droplets was detected by Oil Red-O staining. Results are representative of several fields of cells examined.

dependent changes in expression of either differentiation marker. Again, attempts to observe heregulin-dependent changes by variation of cell culture conditions and heregulin exposure time were not effective.

## CONCLUSIONS

The first goal of our proposed studies was to develop methods for ascertaining the state of differentiation of cultured breast cancer cells. We have been able to detect three markers of differentiation applicable to breast cancer cells: (1) lipid droplets by Oil Red-O staining (2)  $\beta$ -casein expression; and (3) E-cadherin expression. Mastery of these methods required the investigator to develop facility with light microscopic histochemistry methods and immunologic methods. To date, we have not been able to reproducibly demonstrate the differentiating effects of heregulin previously observed with the MDA-MB-453 cell line. A second cell line in which these effects was observed (AU-565) was not made available to the investigator due to problems of mycoplasma contamination in the stocks of the supplier, but could be the subject of future studies. Given that heregulin has been previously observed to induce differentiation of breast cancer cell lines, we reason that one of the signaling pathways engaged by ErbB family receptors, such as the mitogen-activated protein kinase pathway or the phosphatidylinositol 3-kinase pathway, might be more effective in eliciting differentiation of these cells if activated individually rather than in sum. Hence, future efforts will focus on developing methods for the specific activation of these individual signaling pathways in cultured breast cancer cells. Such methods will include the use of inhibitors to block alternative pathways as described in the original proposal.

## REFERENCES

1. Kraus, M. H., W. Issing, T. Miki, N. C. Popescu, and S. A. Aaronson. 1989. Isolation and characterization of *ERBB3*, a third member of the *ERBB*/epidermal growth factor receptor family: evidence for overexpression in a subset of human mammary tumors. *Proc. Natl. Acad. Sci. USA* **86**:9193-9197.
2. Slamon, D. J., W. Godolphin, L. A. Jones, J. A. Holt, S. G. Wong, D. E. Keith, W. J. Levin, S. G. Stuart, J. Udove, A. Ullrich, and M. F. Press. 1989. Studies of the *HER-2/neu* Proto-oncogene in Human Breast and Ovarian Cancer. *Science* **244**:707-712.
3. Lovekin, C., I. O. Ellis, A. Locker, J. Robertson, J. Bell, R. Nicholson, W. J. Gullick, C. W. Elston, and R. W. Blamey. 1991. c-erbB-2 oncoprotein expression in primary and advanced breast cancer. *Br. J. Cancer* **63**:439-443.
4. Gullick, W. J. 1990. 4. The role of the epidermal growth factor receptor and the c-erbB-2 protein in breast cancer. *Int. J. Cancer* **46**:55-61.
5. Jain, S., M. I. Filipe, W. J. Gullick, J. Linehan, and R. W. Morris. 1991. c-erbB-2 proto-oncogene expression and its relationship to survival in gastric carcinoma: An immunohistochemical study on archival material. *Int. J. Cancer* **48**:668-671.
6. Ben-Baruch, N., and Y. Yarden. 1994. Neu differentiation factors: A family of alternatively spliced neuronal and mesenchymal factors. *Proc. Soc. Exp. Biol. Med.* **206**:221-227.
7. Holmes, W. E., M. X. Sliwkowski, R. W. Akita, W. J. Henzel, J. Lee, J. W. Park, D. Yansura, N. Abadi, H. Raab, G. D. Lewis, H. M. Shepard, W. J. Kuang, W. I. Wood, D. V. Goeddel, and R. L. Vandlen. 1992. Identification of heregulin, a specific activator of p185<sup>erbB2</sup>. *Science* **256**:1205-1210.
8. Plowman, G. D., J. M. Green, J. M. Culouscou, G. W. Carlton, V. M. Rothwell, and S. Buckley. 1993. Heregulin induces tyrosine phosphorylation of HER4/p180<sup>erbB4</sup>. *Nature* **366**:473-475.

9. **Carraway, K. L., III, and L. C. Cantley.** 1994. A new acquaintance for ErbB3 and ErbB4: A role for receptor heterodimerization in growth signaling. *Cell* **78**:5-8.
10. **Carraway, K. L., III, M. X. Sliwkowski, R. Akita, J. V. Platko, P. M. Guy, A. Nuijens, A. J. Diamonti, R. L. Vandlen, L. C. Cantley, and R. A. Cerione.** 1994. The *erbB3* gene product is a receptor for heregulin. *J. Biol. Chem.* **269**:14303-14306.
11. **Soltoff, S. P., K. L. Carraway, III, S. A. Prigent, W. G. Gullick, and L. C. Cantley.** 1994. ErbB3 is involved in activation of phosphatidylinositol 3-kinase by epidermal growth factor. *Mol. Cell. Biol.* **14**:3550-3558.
12. **Sliwkowski, M. X., G. Schaefer, R. W. Akita, J. A. Lofgren, V. D. Fitzpatrick, A. Nuijens, B. M. Fendly, R. A. Cerione, R. L. Vandlen, and K. L. Carraway, III.** 1994. Coexpression of *erbB2* and *erbB3* proteins reconstitutes a high affinity receptor for heregulin. *J. Biol. Chem.* **269**:14661-14665.
13. **Wen, D., E. Peles, R. Cupples, S. V. Suggs, S. S. Bacus, Y. Luo, G. Trail, S. Hu, S. M. Silbiger, R. B. Levy, R. A. Koski, H. S. Lu, and Y. Yarden.** 1992. Neu differentiation factor: a transmembrane glycoprotein containing an EGF domain and an immunoglobulin homology unit. *Cell* **69**:559-572.

## APPENDICES

### Key research accomplishments:

1. Development and application of the Oil Red-O histochemical method for detection of lipid droplets in cultured breast cancer cells.
2. Development and application of the Western immunoblotting method for detection of  $\beta$ -casein and E-cadherin expression in cultured breast cancer cells.
3. Investigation of the potential differentiating effects of heregulin treatment on cultured breast cancer cells by assay of markers of cellular differentiation.

### Reportable outcomes:

None.

### Copies of above cited manuscripts:

Not applicable.