

U.S. ARMY

Center for
Arm
Analysis

**UPDATE MARINE CORPS DATA FOR
OCA-NEA**

AUGUST 2000



**CENTER FOR ARMY ANALYSIS
6001 GOETHALS ROAD
FORT BELVOIR, VA 22060-5230**

SECRET

20000830 016



DISCLAIMER

The findings of this report are not to be construed as an official Department of the Army position, policy, or decision unless so designated by other official documentation. Comments or suggestions should be addressed to:

**Director
Center for Army Analysis
ATTN: CSCA-NE
6001 Goethals Road
Fort Belvoir, VA 22060-5230**

REPORT DOCUMENTATION PAGE			<i>Form Approved</i> <i>OMB No. 074-0188</i>	
Public reporting burden for this collection of information is estimated to average 1 hour per response, including the time for reviewing instructions, searching existing data sources, gathering and maintaining the data needed, and completing and reviewing this collection of information. Send comments regarding this burden estimate or any other aspect of this collection of information, including suggestions for reducing this burden to Washington Headquarters Services, Directorate for Information Operations and Reports, 1215 Jefferson Davis Highway, Suite 1204, Arlington, VA 22202-4302, and to the Office of Management and Budget, Paperwork Reduction Project (0704-0188), Washington, DC 20503				
1. AGENCY USE ONLY (Leave blank)	2. REPORT DATE April 2000	3. REPORT TYPE AND DATES COVERED Final, July 1999 – March 2000		
4. TITLE AND SUBTITLE Update Marine Corps Data for OCA-NEA			5. FUNDING NUMBER	
6. AUTHOR(S) Mr. Louis J. Albert				
7. PERFORMING ORGANIZATION NAME(S) AND ADDRESS(ES) Center for Army Analysis 6001 Goethals Road Fort Belvoir, VA 22060-5230			8. PERFORMING ORGANIZATION REPORT NUMBER CAA-R-00-23	
9. SPONSORING / MONITORING AGENCY NAME(S) AND ADDRESS(ES) Operational Capability Assessments – NEA Division Center for Army Analysis 6001 Goethals Road Fort Belvoir, VA 22060-5230			10. SPONSORING / MONITORING AGENCY REPORT NUMBER	
11. SUPPLEMENTARY NOTES				
12a. DISTRIBUTION / AVAILABILITY STATEMENT Approved for public release; dissemination unlimited			12b. DISTRIBUTION CODE A	
13. ABSTRACT (<i>Maximum 200 Words</i>) Marine Corps doctrine and force structure is changing; Marine Expeditionary Brigade (MEB) formations have been abolished and are being redesigned along with Marine Expeditionary Unit (MEU) formations. Gather data on the changed USMC for use in the Concepts Evaluation Model (CEM) and TACWAR. The desired product is a revised database and a briefing. Become knowledgeable on US Marine Corps and collect data for use in Operational Capability Assessments – Northeast Asia (OCA-NEA) theater warfare simulations.				
14. SUBJECT TERMS United States Marine Corps, amphibious formations, Marine Air Ground Task Force, Marine Expeditionary Unit/Force.			15. NUMBER OF PAGES 41	
			16. PRICE CODE	
17. SECURITY CLASSIFICATION OF REPORT UNCLASSIFIED	18. SECURITY CLASSIFICATION OF THIS PAGE UNCLASSIFIED	19. SECURITY CLASSIFICATION OF ABSTRACT UNCLASSIFIED	20. LIMITATION OF ABSTRACT SAR	

(THIS PAGE INTENTIONALLY LEFT BLANK)

**UPDATE MARINE CORPS DATA FOR OCA-NEA
(MARNEA)**

SUMMARY

THE PROJECT PURPOSE was to gather data on the US Marine Corps (USMC) for use in the Concepts Evaluation Model (CEM) and TACWAR.

THE PROJECT SPONSOR was the Chief of the Operational Capability Assessments-Northeast Asia Division at the Center for Army Analysis.

THE PROJECT OBJECTIVES were to:

- (1) Gather data on the USMC for current year analysis and prepare a database.
- (2) Prepare a briefing describing USMC organization for the North East Asia theater.

THE SCOPE OF THE PROJECT was limited to the current year force for the Northeast Asia theater.

THE PROJECT EFFORT was conducted by Mr. Louis Albert, Operational Capability Assessments - Northeast Asia, Center for Army Analysis (CAA).

COMMENTS AND QUESTIONS may be sent to the Director, Center for Army Analysis, ATTN: CSCA-NE, 6001 Goethals Road, Suite 102, Fort Belvoir, VA 22060-5230.

(THIS PAGE INTENTIONALLY LEFT BLANK)

CONTENTS

1	INTRODUCTION.....	1
1.1	Update Marine Corps Data for OCA-NEA (MARNEA).....	1
1.2	Agenda.....	1
1.3	Front Page.....	2
1.4	MARFORPAC Organization Chart.....	3
1.5	Scope of This Report.....	4
1.6	Marine Expeditionary Force (MEF).....	5
1.7	I MEF.....	6
1.8	III MEF.....	7
1.9	1 and 3 MARDIV.....	8
1.10	Infantry Regiment.....	9
1.11	Tank Battalion.....	10
1.12	Assault Amphibian Battalion.....	11
1.13	Combat Engineer Battalion.....	12
1.14	Artillery Regiment.....	13
1.15	Headquarters Battalion.....	14
1.16	Light Armored Reconnaissance Battalion.....	15
1.17	1st MAW.....	16
1.18	3 FSSG.....	17
1.19	Marine Expeditionary Unit (MEU).....	18
1.20	31st MEU (SOC).....	19
1.21	CE (MEU-31).....	20
1.22	GCE (BLT 2/4).....	21
1.23	ACE (HMM-265).....	22
1.24	CSSE (MSSG-31).....	23
1.25	ARG (PhibRon 11).....	24
1.26	USS Belleau Wood LHA 3.....	25
1.27	USS Juneau LPD 10.....	26
1.28	USS Germantown, LSD 42, and USS Fort McHenry, LSD 43.....	27
	APPENDIX A. PROJECT CONTRIBUTORS.....	A-1
	APPENDIX B. REQUEST FOR ANALYTICAL SUPPORT.....	B-1

FIGURES

Figure 1.	Agenda.....	1
Figure 2.	Front Page.....	2
Figure 3.	MARFORPAC Organization Chart.....	3
Figure 4.	Scope of This Report.....	4
Figure 5.	Marine Expeditionary Force (MEF).....	5
Figure 6.	I MEF.....	6
Figure 7.	III MEF.....	7
Figure 8.	1 and 3 MARDIV.....	8
Figure 9.	Infantry Regiment.....	9
Figure 10.	Tank Battalion.....	10

Figure 11. Assault Amphibian Battalion	11
Figure 12. Combat Engineer Battalion	12
Figure 13. Artillery Regiment.....	13
Figure 14. Headquarters Battalion	14
Figure 15. Light Armored Reconnaissance Battalion.....	15
Figure 16. 1st MAW	16
Figure 17. 3 FSSG	17
Figure 18. Marine Expeditionary Unit (MEU)	18
Figure 19. 31st MEU (SOC)	19
Figure 20. CE (MEU-31)	20
Figure 21. GCE (BLT 2/4).....	21
Figure 22. ACE (HMM-265)	22
Figure 23. CSSE (MSSG-31).....	23
Figure 24. ARG (PhibRon 11).....	24
Figure 25. USS Belleau Wood LHA 3.....	25
Figure 26. USS Juneau LPD 10	26
Figure 27. USS Germantown, LSD 42, and USS Fort McHenry, LSD 43.....	27

1 INTRODUCTION

1.1 UPDATE MARINE CORPS DATA FOR OCA-NEA (MARNEA)

1.2 AGENDA

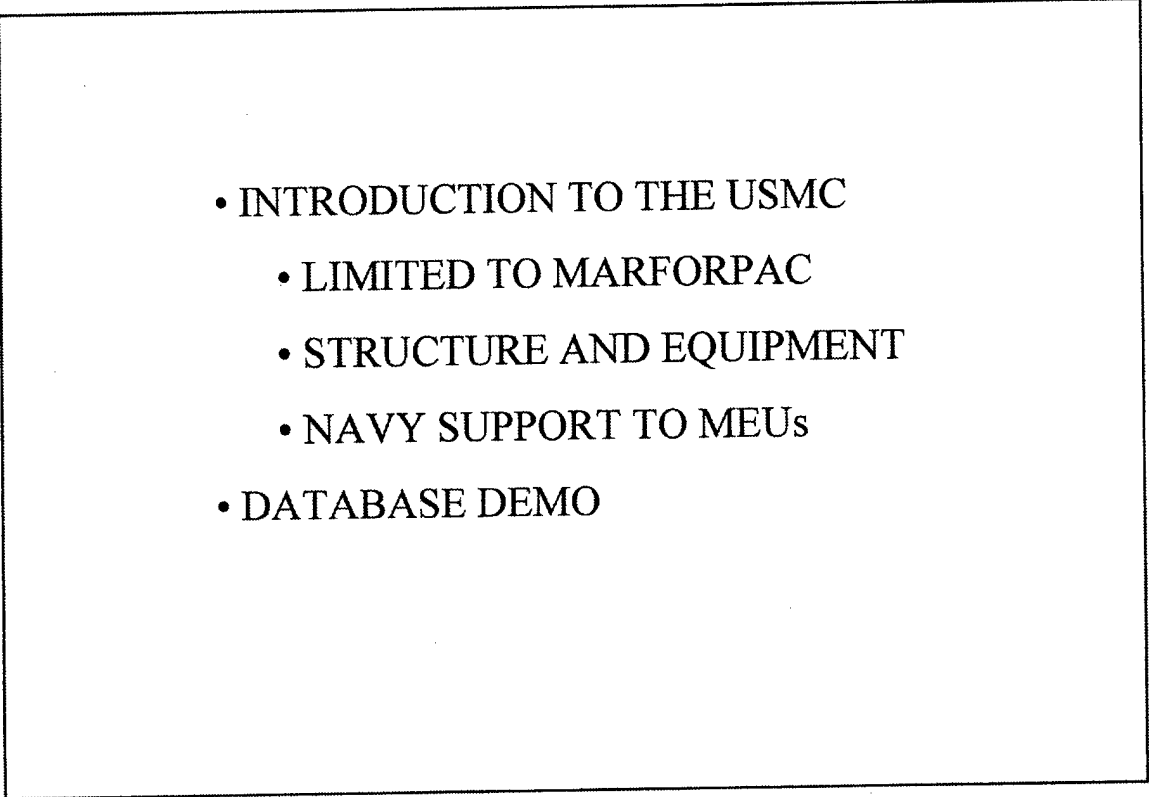
- 
- INTRODUCTION TO THE USMC
 - LIMITED TO MARFORPAC
 - STRUCTURE AND EQUIPMENT
 - NAVY SUPPORT TO MEUs
 - DATABASE DEMO

Figure 1. Agenda

Figure 1 presents the agenda followed for this report.

1.3 Front Page

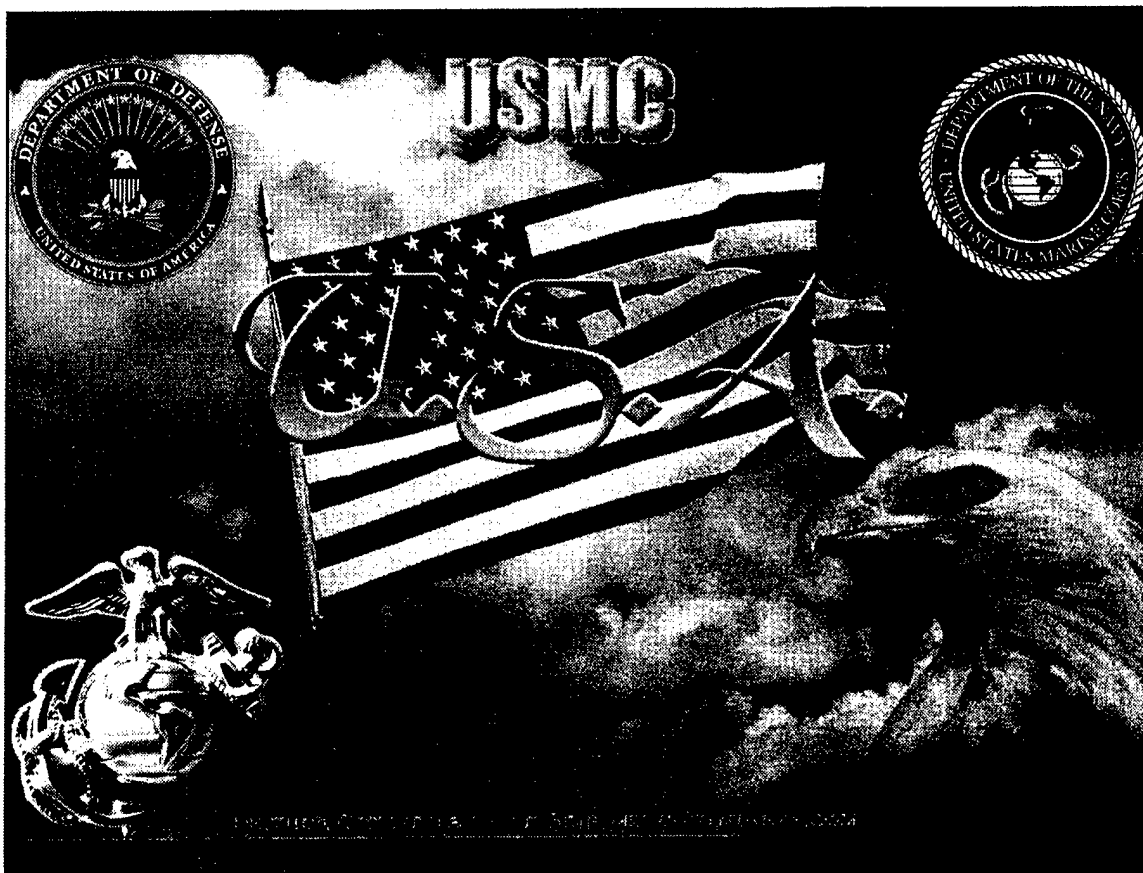


Figure 2. Front Page

The purpose of this report is to familiarize the viewer with the US Marine Corps (USMC) forces that support the Northeast Asian theater.

L.4 MARFORPAC Organization Chart

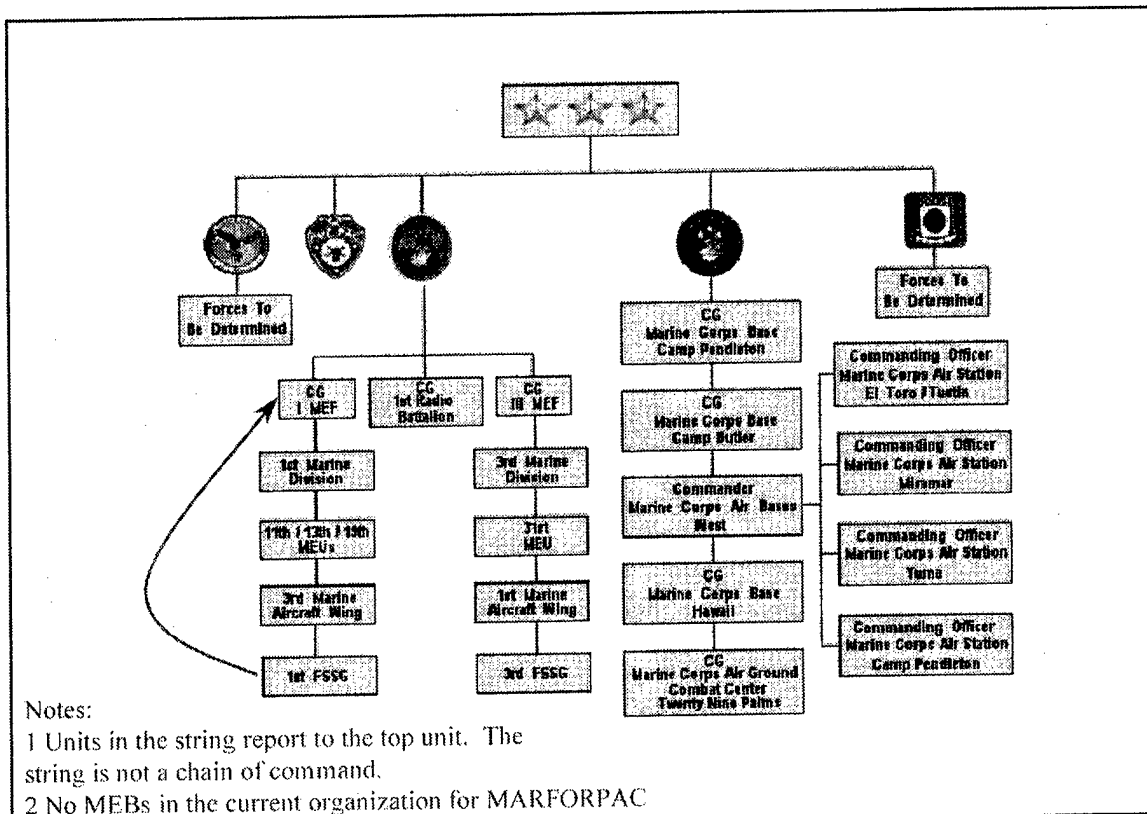


Figure 3. MARFORPAC Organization Chart

Our scope is limited to the column on Figure 3 titled CG III MEF and the naval forces that support these marine forces. These forces are widely scattered around the Pacific Ocean. The forces for Central Command (CENTCOM) and US Forces Korea (USFK) will be drawn from these commands, from the Marine reserves and from the Atlantic commands.

This organization chart is slightly misleading; 1st Force Service Support Group (FSSG) works for 1 Marine Expeditionary Force (MEF), not the unit directly above it, and so forth. If a Marine Expeditionary Brigade (MEB) is formed from the Marine forces in the Pacific, it will be formed from the above divisions, wings, and FSSGs assigned to Marine Forces Pacific (MARFORPAC).

1.5 Scope of This Report

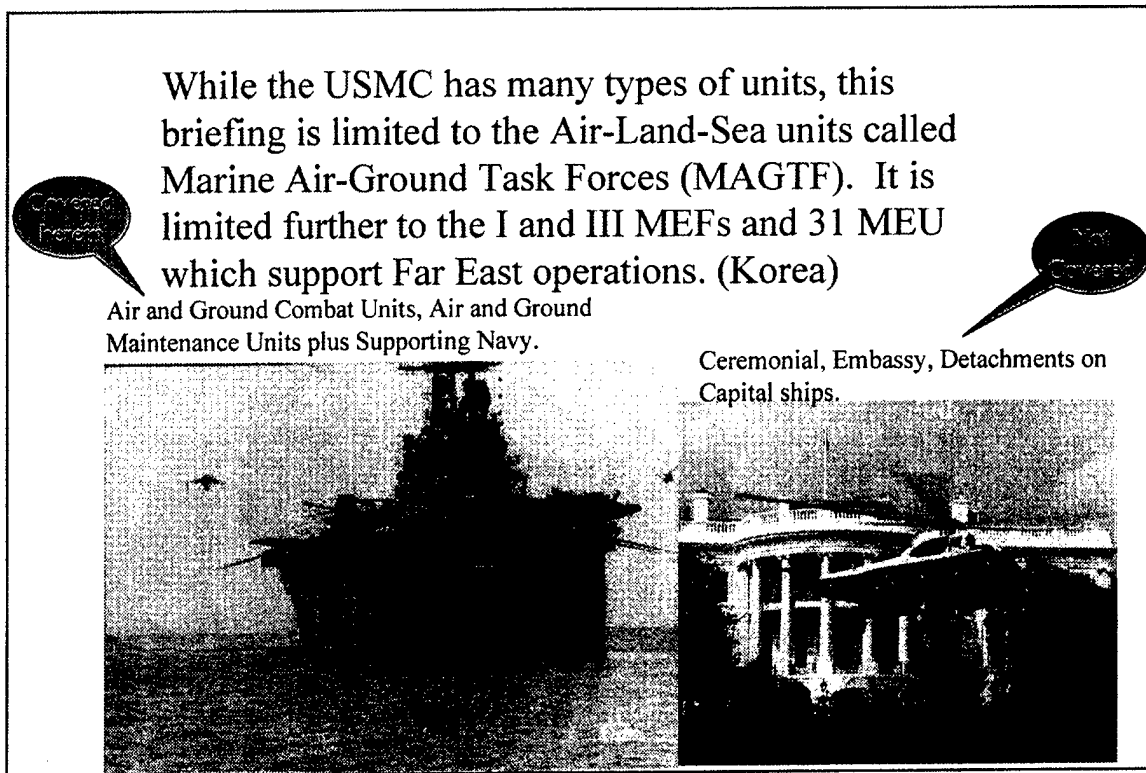


Figure 4. Scope of This Report

Figure 4 shows the USS Tarawa, LHA-1, a sister ship of the amphibious assault ship assigned to 31 Marine Expeditionary Unit (MEU). Each MEU is composed of Marine ground combat forces, amphibious forces, air combat forces, and support forces as well as a US Navy squadron called a PhibRon for amphibious squadron. In general terms, a MEU is a small type of MAGTF which is forward-positioned and capable of responding to a variety of small emergencies.

The helicopter shown is Marine Corps 1. It is part of the USMC that this briefing will not cover.

Equivalences to Army units are:

MEF - similar to a corps command with 1 or more division plus air and combat service support (CSS).

MEB - similar to a brigade plus air and CSS.

MEU - similar to a reinforced regiment with air and CSS slices.

A MAGTF is supported by Naval forces such as this ship. In peacetime operations, different units rotate into the MAGTFs. In wartime operations, the units are organized into MAGTFs such as MEFs, MEBs, and MEUs.

1.6 Marine Expeditionary Force (MEF)

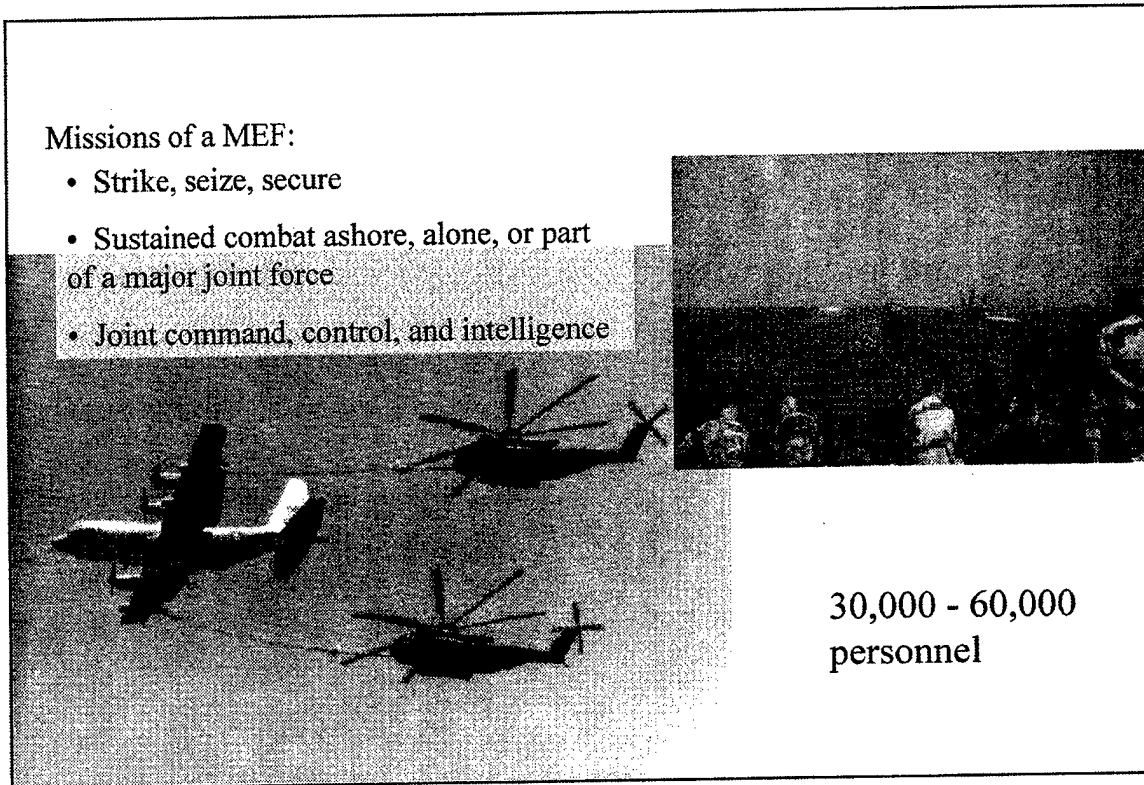


Figure 5. Marine Expeditionary Force (MEF)

The MEF is the largest USMC MAGTF. It is based upon one or more Marine divisions, one or more Marine air wings, and an FSSG. One or more MEUs may be included, either formed from the units of the MEF or added to it from other Marine units. A MAGTF has sufficient naval force attached to transport and land it.

The aircraft shown in Figure 5 are a USMC C-130 refueling two CH-53E Super Stallion helicopters. The other picture shows Marines and a PhibRon (amphibious squadron) near Suez, Egypt. A PhibRon consists of a helicopter and Harrier-equipped assault carrier, either LHA or LHD class amphibious assault ship, and two amphibious landing ships of the LPD or LSD classes.

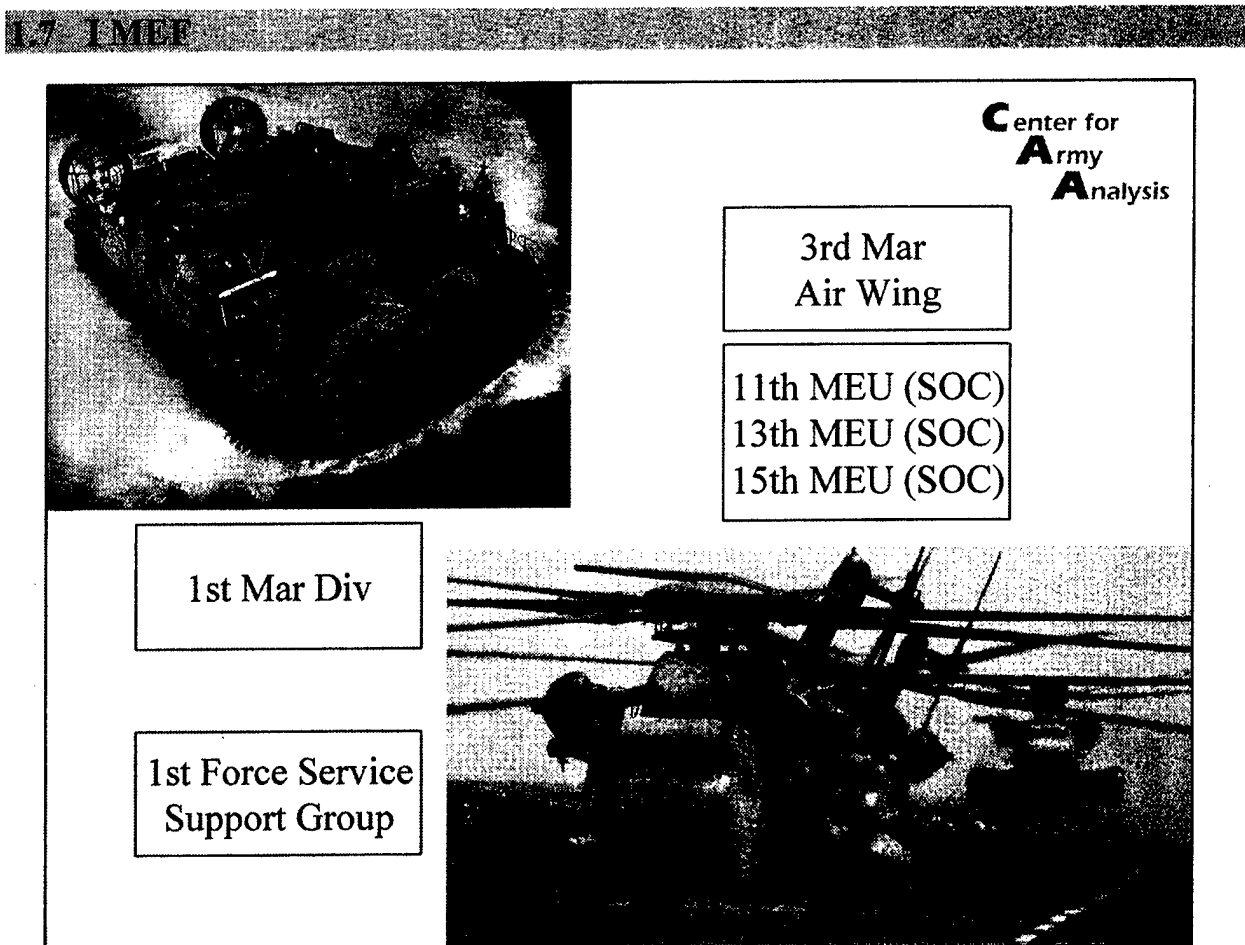


Figure 6. I MEF

The I MEF is assigned to the commander in chief (CINC) for the Pacific Command (PACOM). This is its nominal USMC structure. It may, depending upon the task, be augmented with additional Marine forces. I MEF Headquarters is at Camp Pendleton, California. 1st Marine Division (MARDIV) is part of I MEF and its headquarters is at Camp Pendleton, California. 3d Marine Air Wing (MAW) is at Miramar Naval Air Station, California. 1st FSSG is part of I MEF, and its headquarters is at Camp Pendleton, California. 11 MEU is based at Camp Pendleton and currently is about to be deployed on the Peleliu ARG (Jan 2000). 13 MEU is based at Camp Pendleton and currently is not deployed (Jan 2000). 15 MEU is based at Camp Pendleton and currently is deployed on the Bonnhomme Richard ARG (Jan 2000).

The pictures are of a landing craft air cushioned (LCAC) loaded and under way and of CH-53E Sea Stallion helicopters.

SOC (shown in the figure) means special operations capable. A MEU must qualify for this designation each time units rotate into a MEU.

L8 III MEF

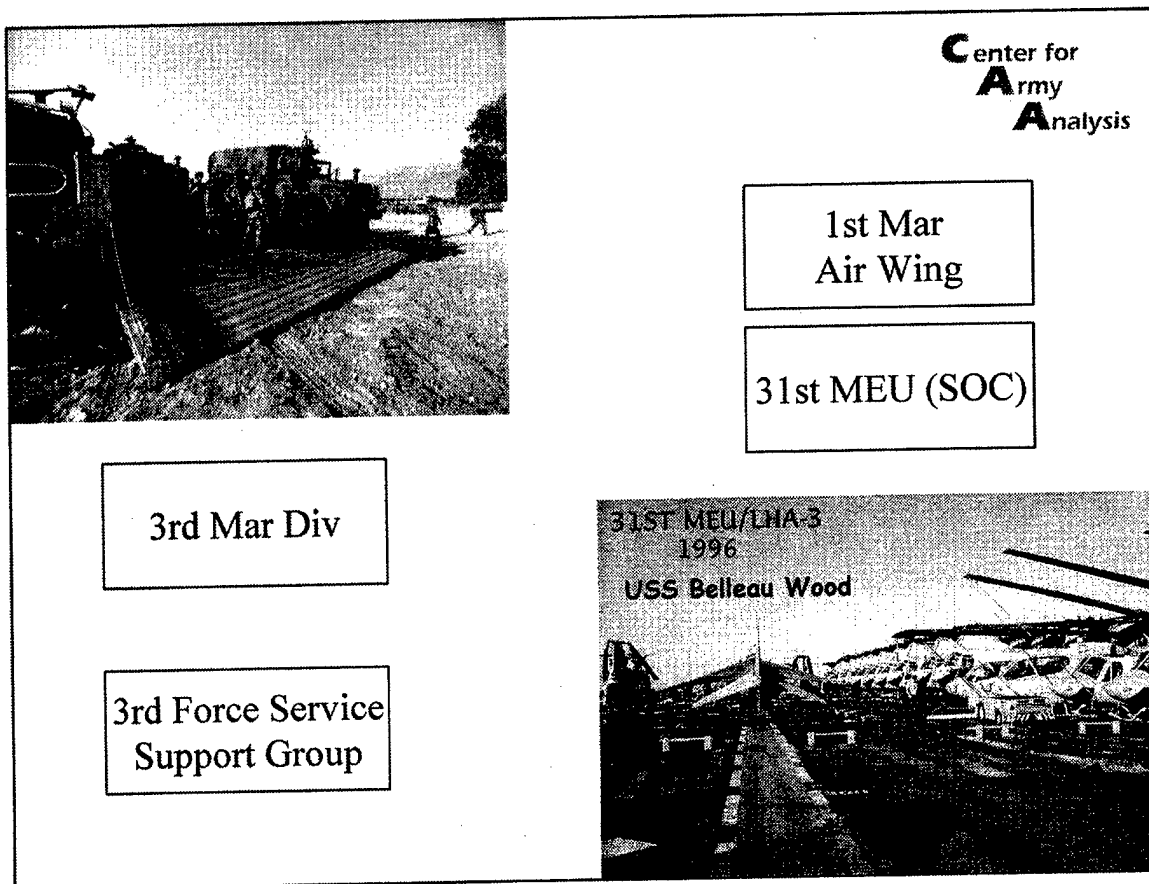


Figure 7. III MEF

The III MEF is assigned to the CINC for the Pacific Command. This is its nominal USMC structure. It may, depending upon the task, be augmented with additional Marine forces. III MEF headquarters is at Camp Foster, Okinawa.

3d MARDIV is part of III MEF, and its headquarters is at Camp Courtney, Okinawa. 1st MAW HQ is part of III MEF and is based at Futenma Marine Corps Air Station (MCAS), Okinawa, and currently is at Camp Foster. 3d FSSG HQ is part of III MEF and is based at Camp Kinser, Okinawa. 31 MEU (SOC) is based at Camp Hansen, Okinawa, and is forward-deployed on the Belleau Wood Amphibious Ready Group (ARG) at Sasebo, Japan as of January 2000.

“It would be helpful to understand how the Marine Corps deploys in order to better understand the structure. The four infantry battalions on Okinawa (III MEF, 3rd MARDIV) are part of the Unit Deployment Program (UDP). What that means is that they rotate from CONUS for 6 month tours, and they are taken from the divisions in Hawaii, West Coast, and East Coast. Thus, while the number of battalions in CONUS and Hawaii may seem high, that is because they always have battalions missing on UDP in Okinawa.”

The left picture in Figure 7 shows an LCAC offloading on a beach. An early number LHA, like the USS Belleau Wood, carries one LCAC. The larger LHD carries three LCACs. LCUs can be used instead of LCACs.

1.9 1 and 3 MARDIV

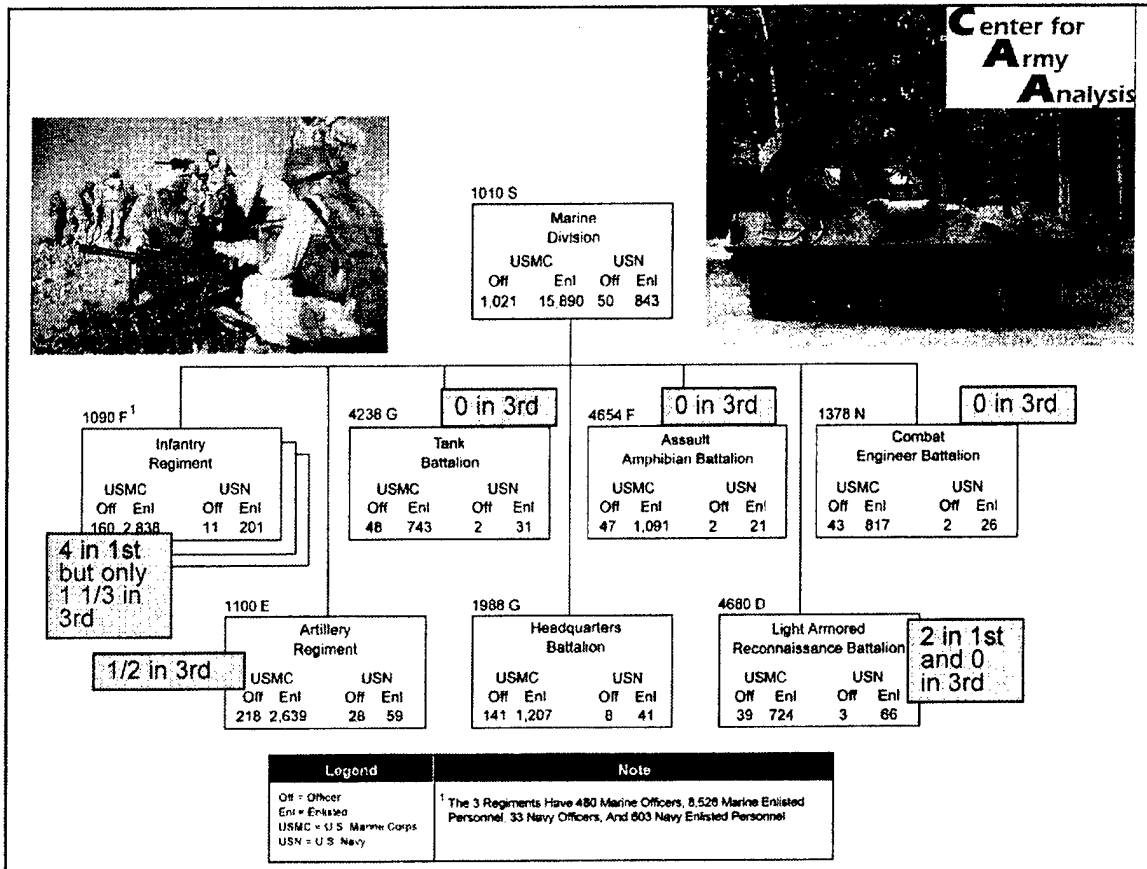


Figure 8. 1 and 3 MARDIV

This and the organizational charts shown in the following figures are from Organization of Marine Corps Forces, MCRP 5-12D, dated 13 October 1998. The First, Second, and Third Marine Divisions have the same nominal organization chart, but 3 MARDIV is short units as indicated. The Fourth Marine Division is a reserve division and is organized differently; it is the source of replacements for the three active divisions.

3 MARDIV headquarters is at Camp Courtney, Okinawa.

The MK 19 grenade launcher is in the left picture.

The light armored vehicle (LAV)-25 in the right picture is an LAV-AD with Stinger and gatling gun. The basic LAV-25 is an 8x8 that can do 6 knots or 65 mph. It comes with a 25mm Bushmaster mount with coaxial 7.62mm machinegun. Crew is three plus five passengers in the basic LAV-25. It can be lifted by a CH-53E Super Stallion helicopter or a C-130, both of which are used by the USMC.

1.10 Infantry Regiment

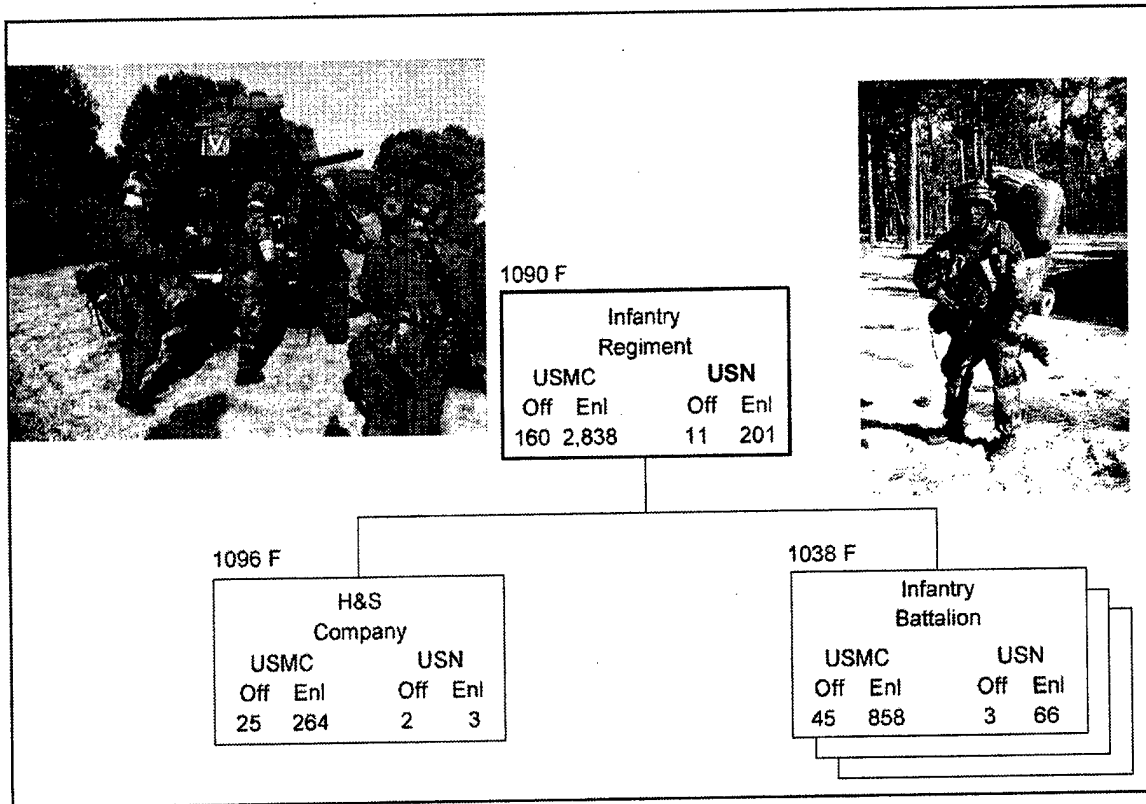


Figure 9. Infantry Regiment

III MARDIV has 1.3 infantry regiments; each regiment has 3 battalions for a total of 4 infantry battalions. A nominal MARDIV has nine battalions of infantry. These are light infantry units with trucks, rifles, machineguns, TOW (tube-launched, optically tracked, wire-guided) launchers, and 60 and 81mm mortars.

1.11 Tank Battalion

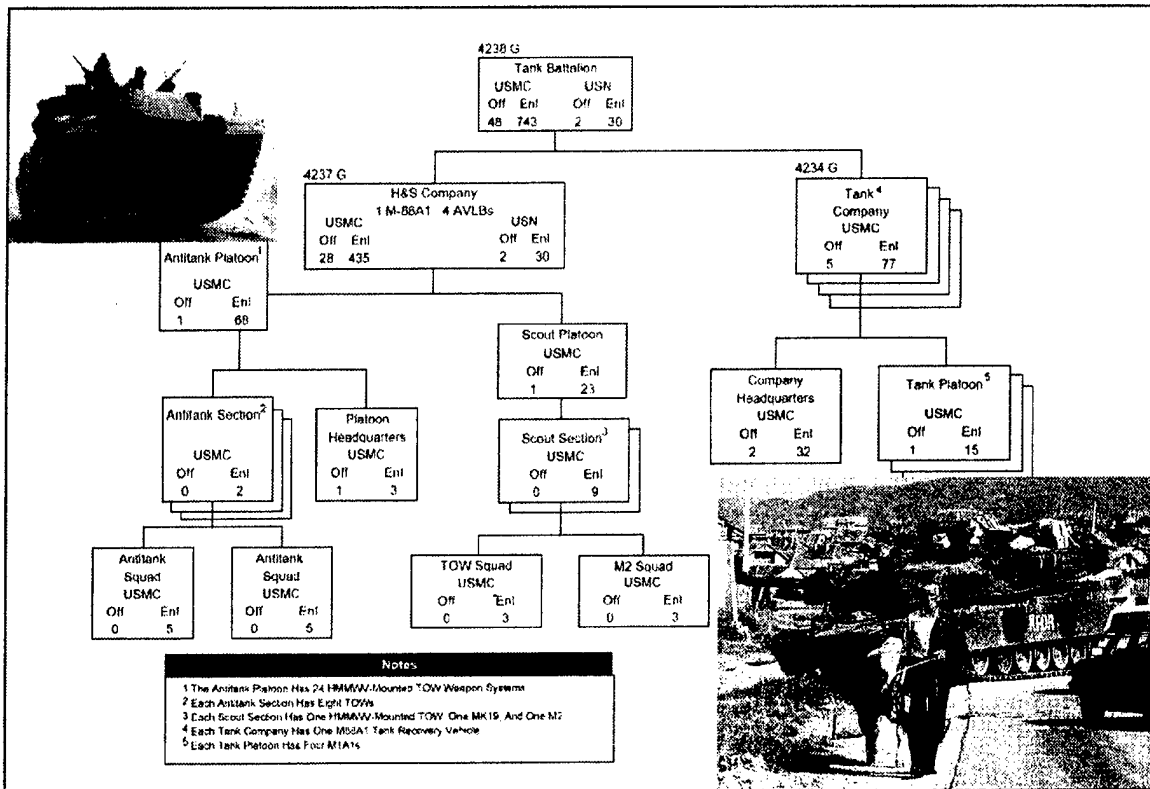


Figure 10. Tank Battalion

The tank battalion has 58 M1A1 tanks; a tank platoon from a battalion is generally attached to a MEU. The 26th MEU (SOC) has a platoon of four tanks and was deployed to Kosovo in 1999. The picture of an Army tank in Kosovo at the lower right of Figure 10 is representative of the follow-on force to 26 MEU.

I.12 Assault Amphibian Battalion

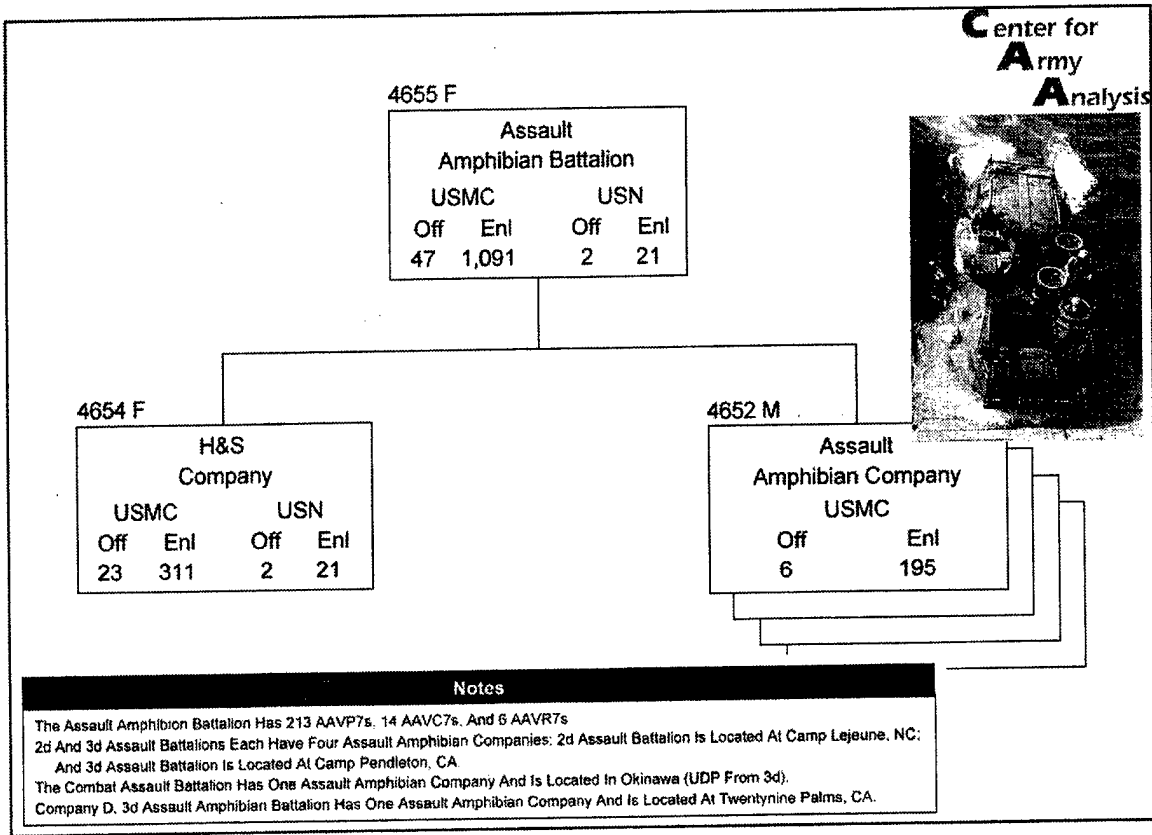


Figure 11. Assault Amphibian Battalion

The assault amphibian battalion has 233 amphibious assault vehicles (AAVs) as noted on Figure 11. The picture is an AAVP7 starting to climb the stern ramp of an PhibRon ship. The AAVP7 carries a crew of 3 plus 25 passengers. It can do about 7 knots in water and 45 mph on land. Its land range is about 300 land miles.

1.13 Combat Engineer Battalion

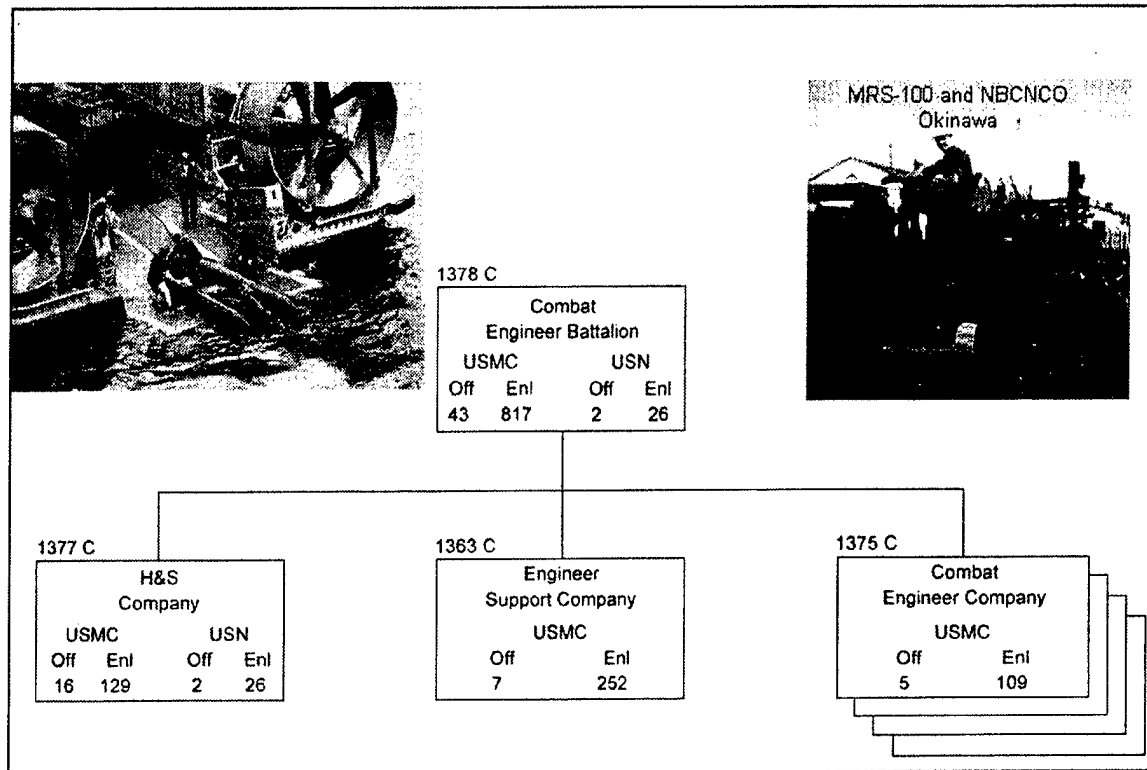


Figure 12. Combat Engineer Battalion

The left picture is an explosive ordnance disposal (EOD) team deploying from a LCAC. The right picture was taken in Okinawa of an MRS-100 and its driver.

I.14 Artillery Regiment

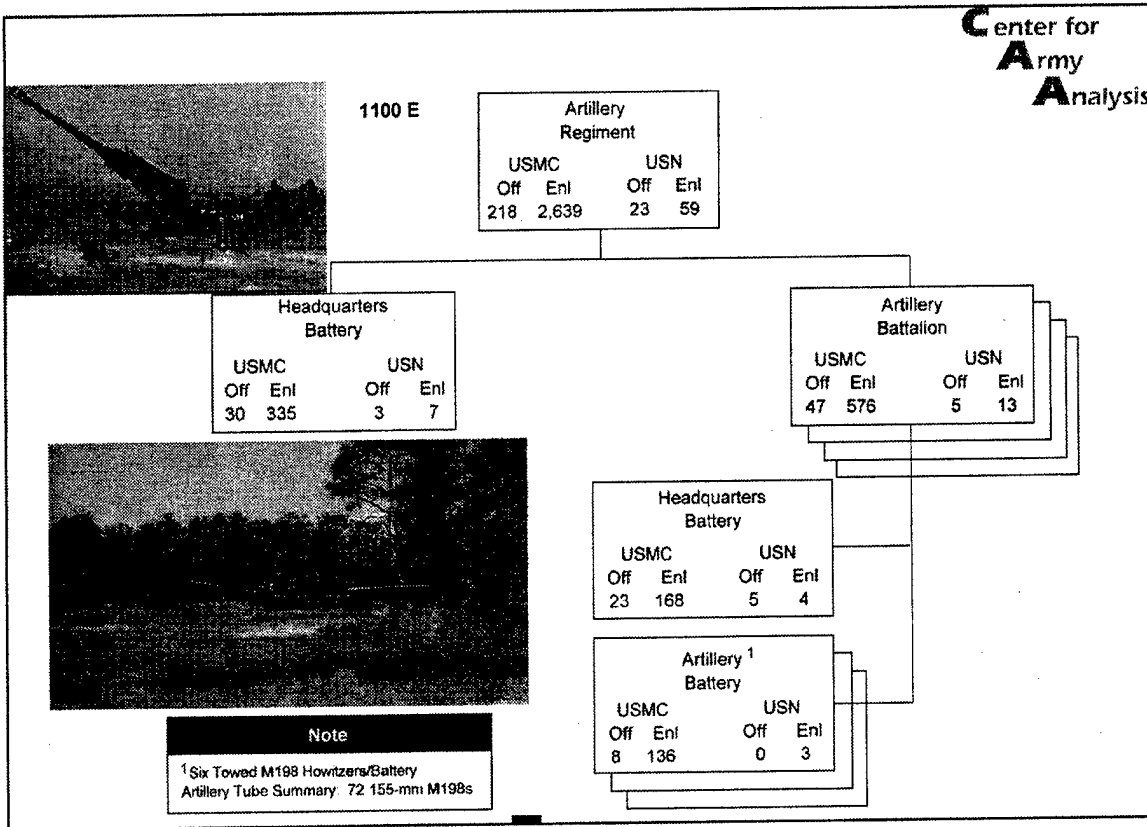


Figure 13. Artillery Regiment

Each battery has six M198 towed 155s.

1.15 Headquarters Battalion

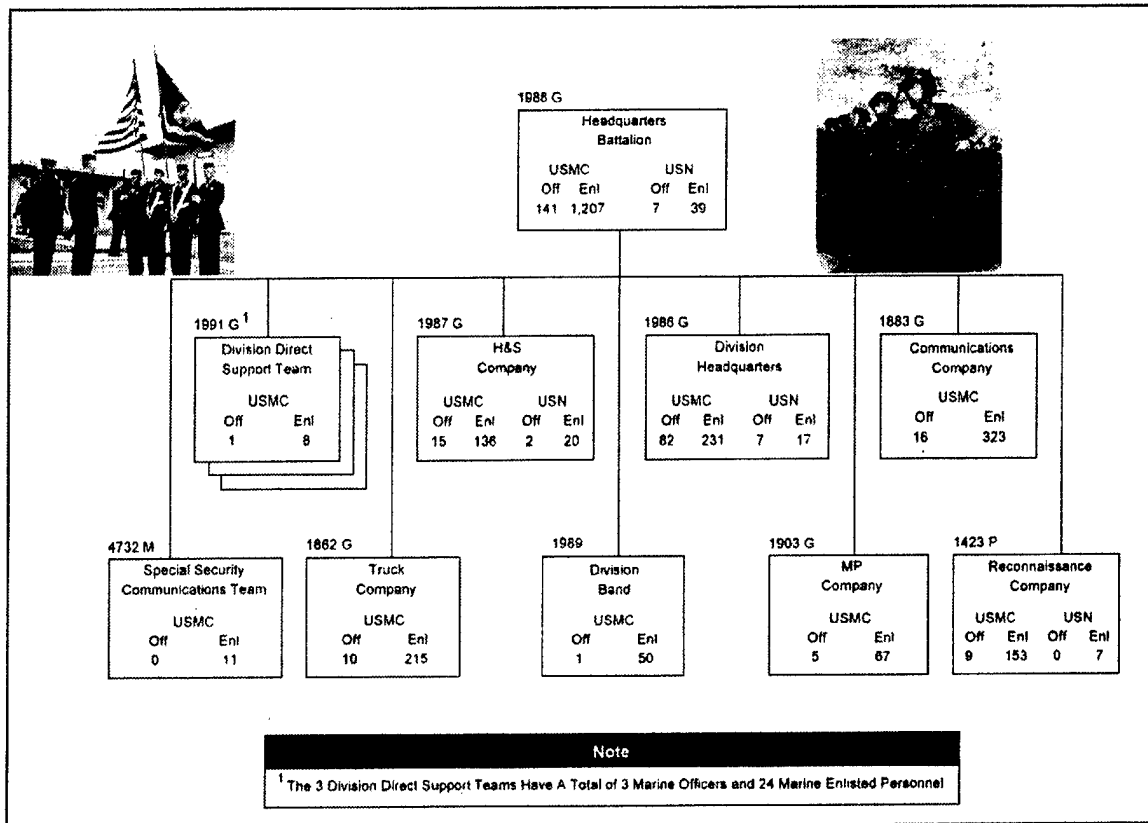


Figure 14. Headquarters Battalion

Figure 14 shows headquarters battalion structure.

1.16 Light Armored Reconnaissance Battalion

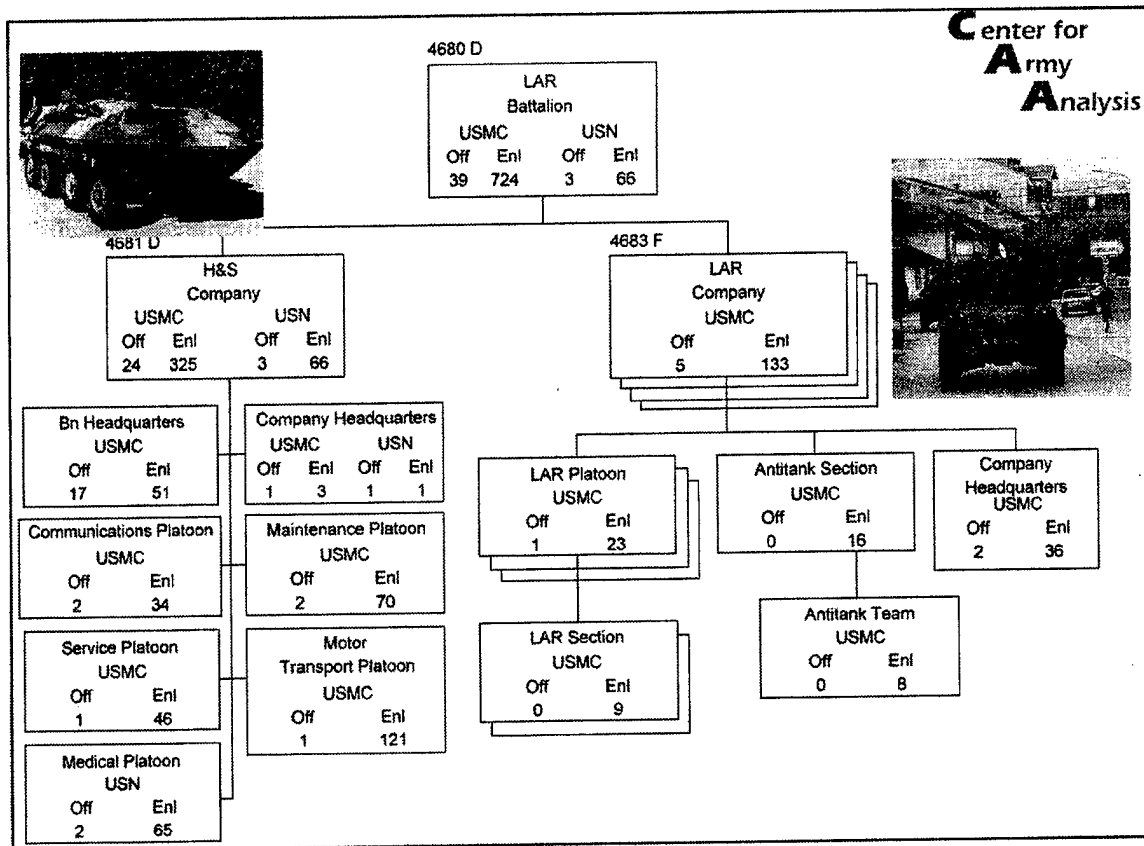


Figure 15. Light Armored Reconnaissance Battalion

This unit uses light armored vehicles (LAVs) and high mobility multipurpose wheeled vehicles (HMMWVs) in various configurations, including mortar, machinegun, and antitank. The crew in the LAV-25 is three plus five passengers.

1.17 1st MAW

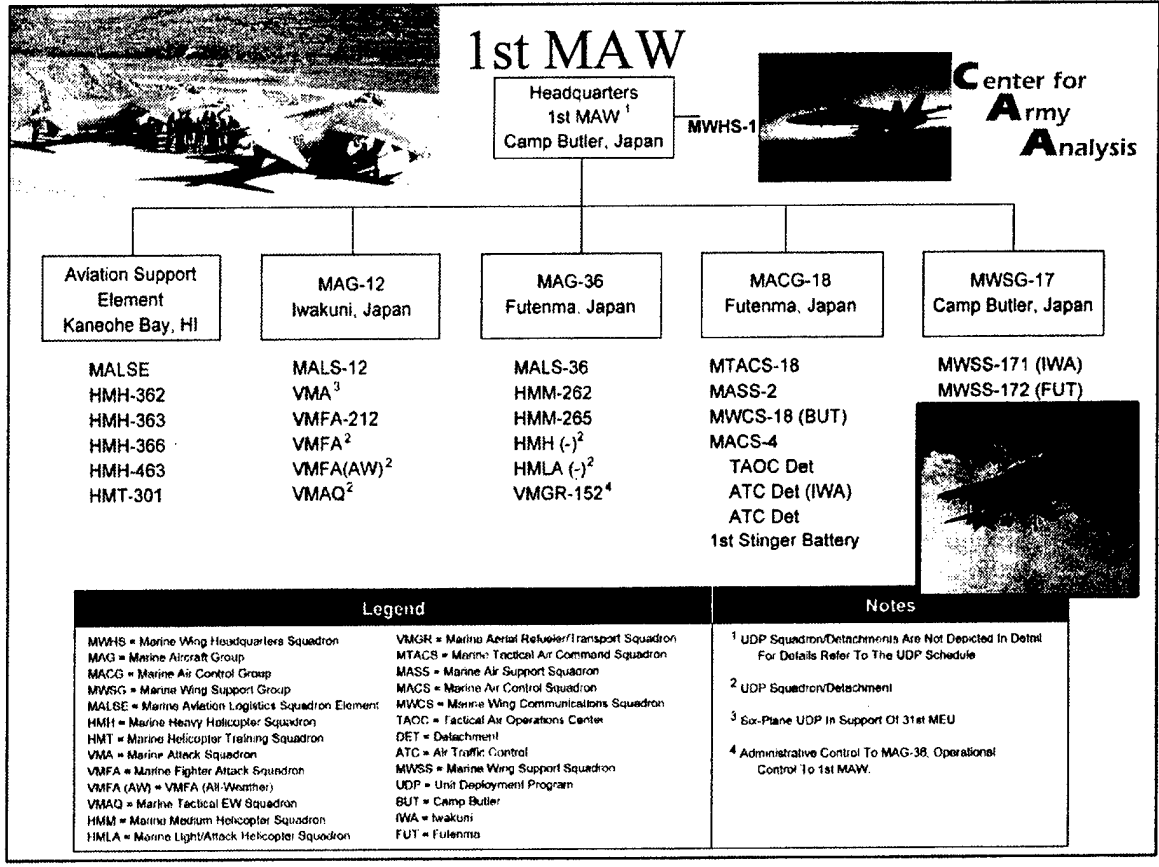


Figure 16. 1st MAW

Figure 16 shows two Harriers, an FA-18 Hornet and an AV-8B Harrier.

I.18 3 FSSG

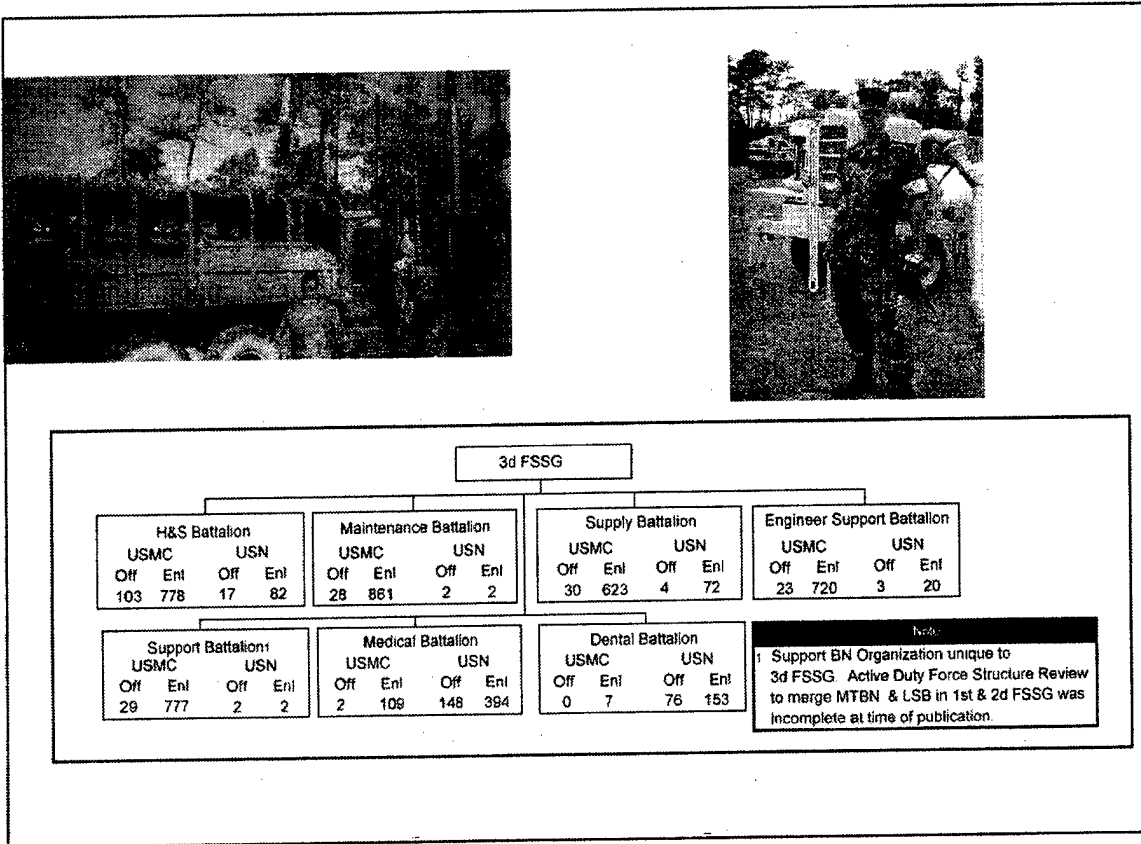


Figure 17. 3 FSSG

3d Force Service Support Group (FSSG) is based at various camps and air stations in Okinawa, Japan, and Hawaii. Headquarters is at Camp Kinser, Okinawa. The Marine with the wrench is standing in front of water pumping equipment.

1.19 Marine Expeditionary Unit (MEU)

Missions of a MEU:

- Security operations
- Amphibious operations
- Noncombatant evacuation operations (NEO)
- Special operations
- Mobile training teams
- Humanitarian assistance



2,100 personnel

Figure 18. Marine Expeditionary Unit (MEU)

The CH-46E Sea King helicopter shown in Figure 18 carries a crew of 3 plus 26 passengers. It can do approximately 144 knots with a range of 240 miles.

The AAV7 also shown in Figure 18 carries a crew 3 plus 25 passengers. It can do approximately 7 knots in water and 45mph on land. It's land range is about 300 land miles.

L20 31st MEU (SOC)

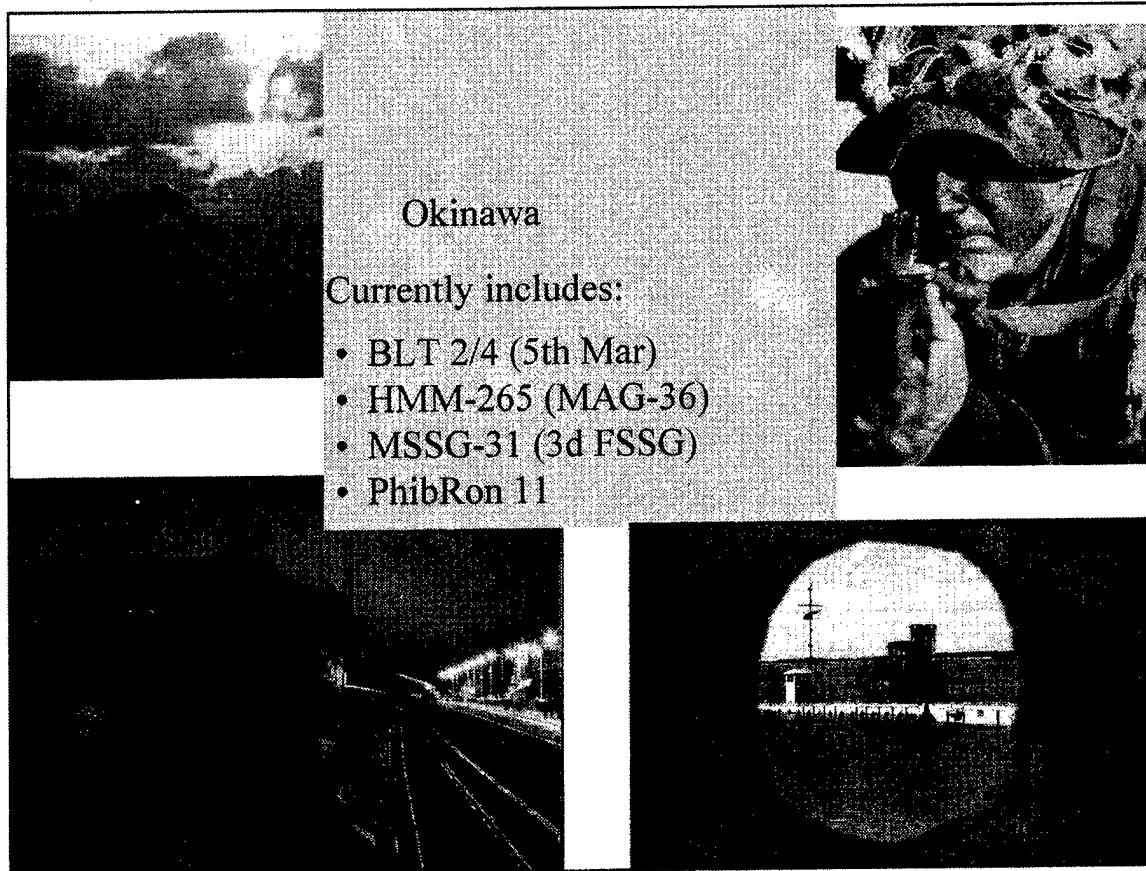


Figure 19. 31st MEU (SOC)

A MEU is a small, balanced force of land, sea, and air units. Acronyms used in Figure 19 are defined as follows:

BLT	battalion landing team
MEU	Marine Expeditionary Unit
SOC	special operations capable
HMM	Marine medium helicopter squadron
MAG	Marine aircraft group
MSSG	Marine service support group
FSSG	force service support group
PhibRon	amphibious squadron

1.21 CE (MEU-31)

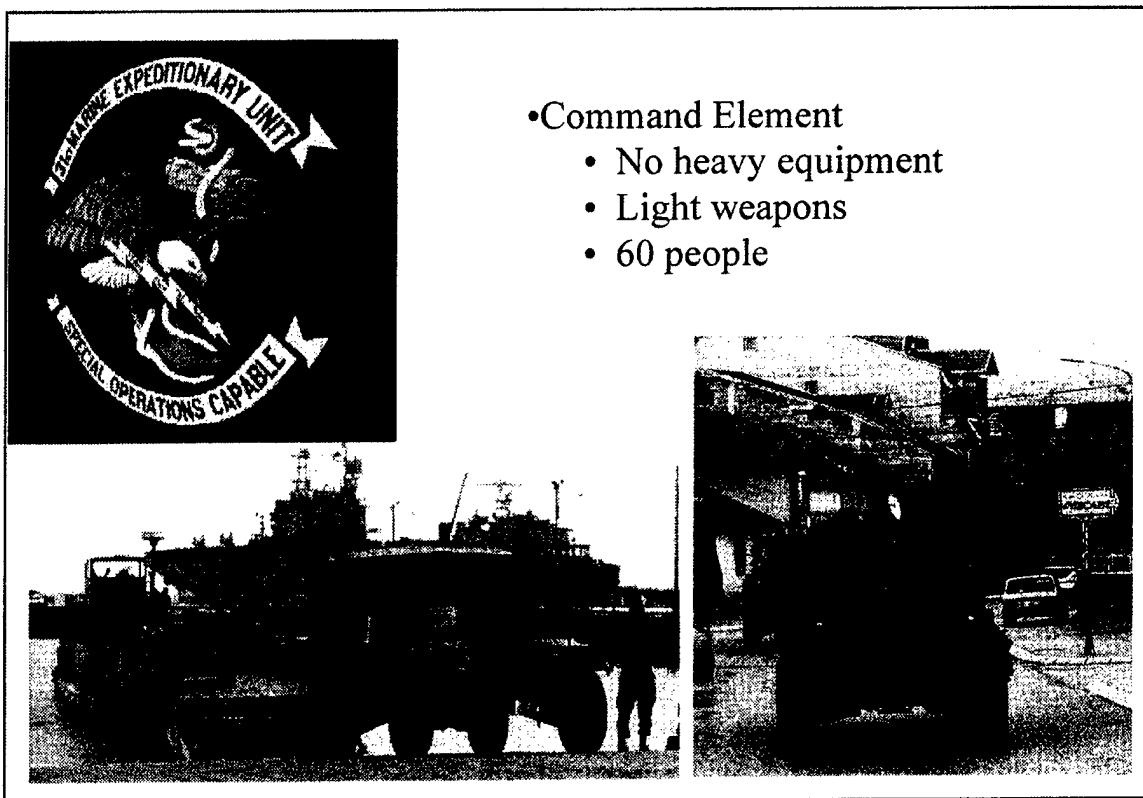


Figure 20. CE (MEU-31)

The command element (CE), as shown in Figure 20, is one of the two permanent parts of the MEU. CE, 31 MEU, is assigned to Camp Hansen, Okinawa. Its unit identification code (UIC) is M20175.

1.22 GCE (BLT 2/4)

- Ground Combat Element
- 4 M1A1 Main Battle Tanks
- 8 LAV-25 Light Armored Vehicles
- 17 AAV-7 Armored Amphibious Vehicles
- 28 HMMWV
 - including TOW, 50 cal machine guns, stingers, grenade launchers, and 81mm mortars
- 8 M198 155mm Towed
- 902 People

Currently 31 MEU does not have tanks.

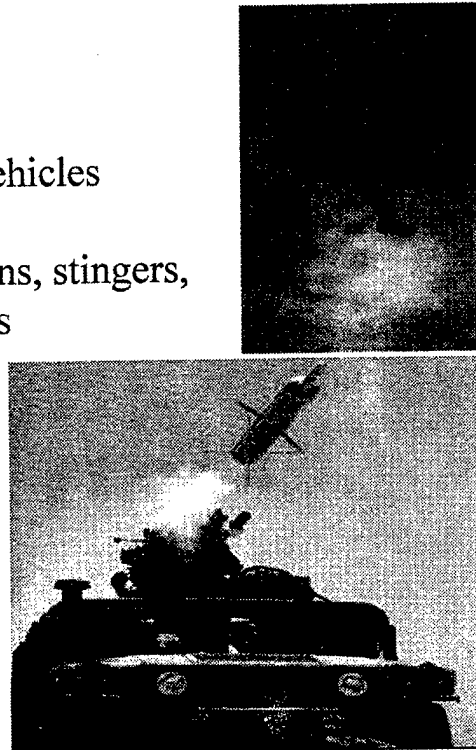


Figure 21. GCE (BLT 2/4)

1/5th is the current battalion assigned to the BLT of the 31 MEU.

The units that fill the ground combat element (GCE), aviation combat element (ACE), and CSSE rotate every 6 months according to the USMC unit deployment plan.

1.23 ACE (HMM-265)

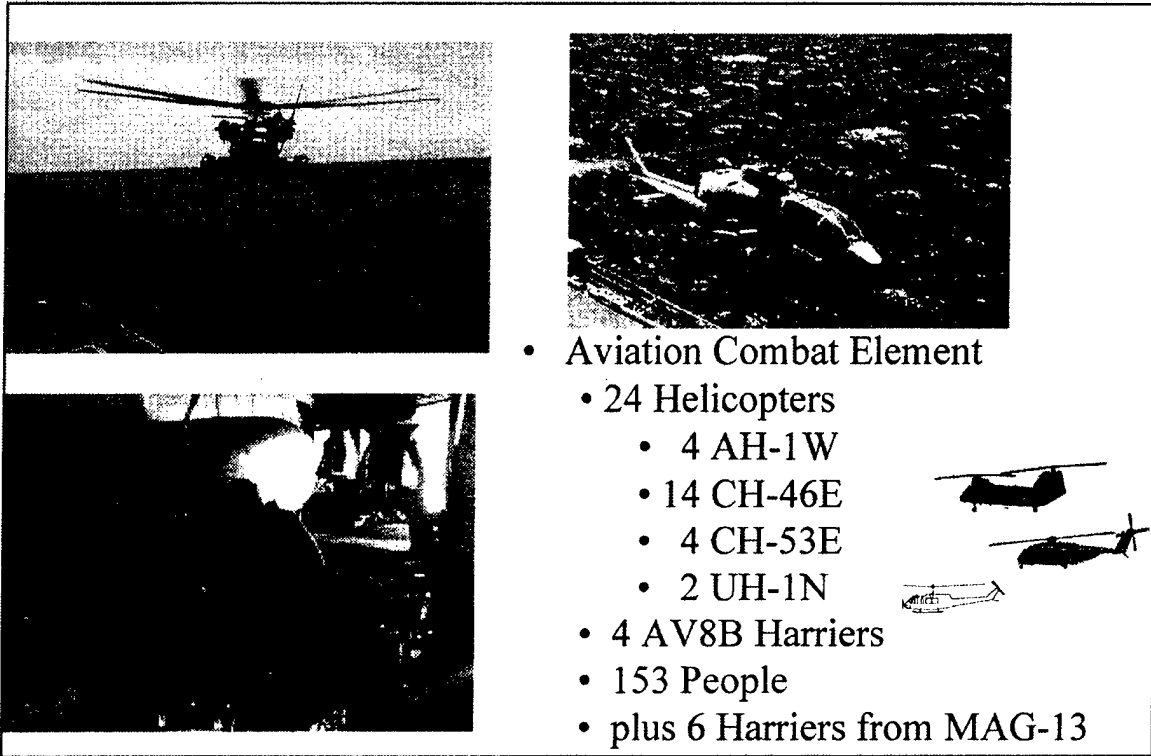


Figure 22. ACE (HMM-265)

The composition of an ACE will vary depending upon the deployment mission and the ships available in the PhibRon. The complement of aircraft shown in Figure 22 is the normal one for this MEU; however, the MEU is normally on a three-ship amphibious ready group, and in early 2000, this ARG has an extra ship and mission, probably for humanitarian assistance in East Timor where the USMC is providing helicopter lift. The Navy web site states that 26 CH-46Es and 19 CH-53Ds were in this ARG as of 10 January 2000.

1.24 CSSE (MSSG-31)

- **Combat Service Support Element**
 - Light Weapons
 - Trucks
 - Decontamination
 - Water purification
 - Storage tanks
 - Communications
 - 248 People

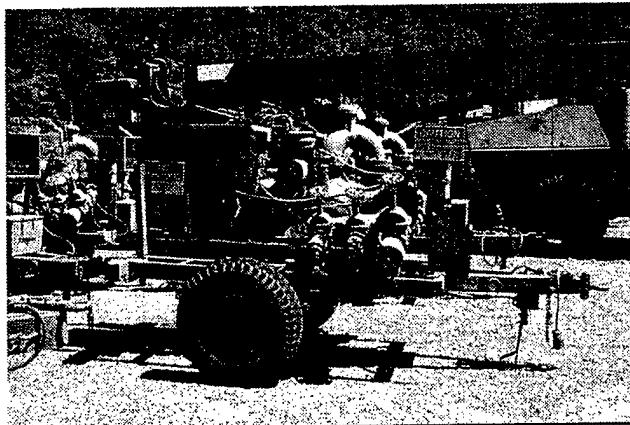
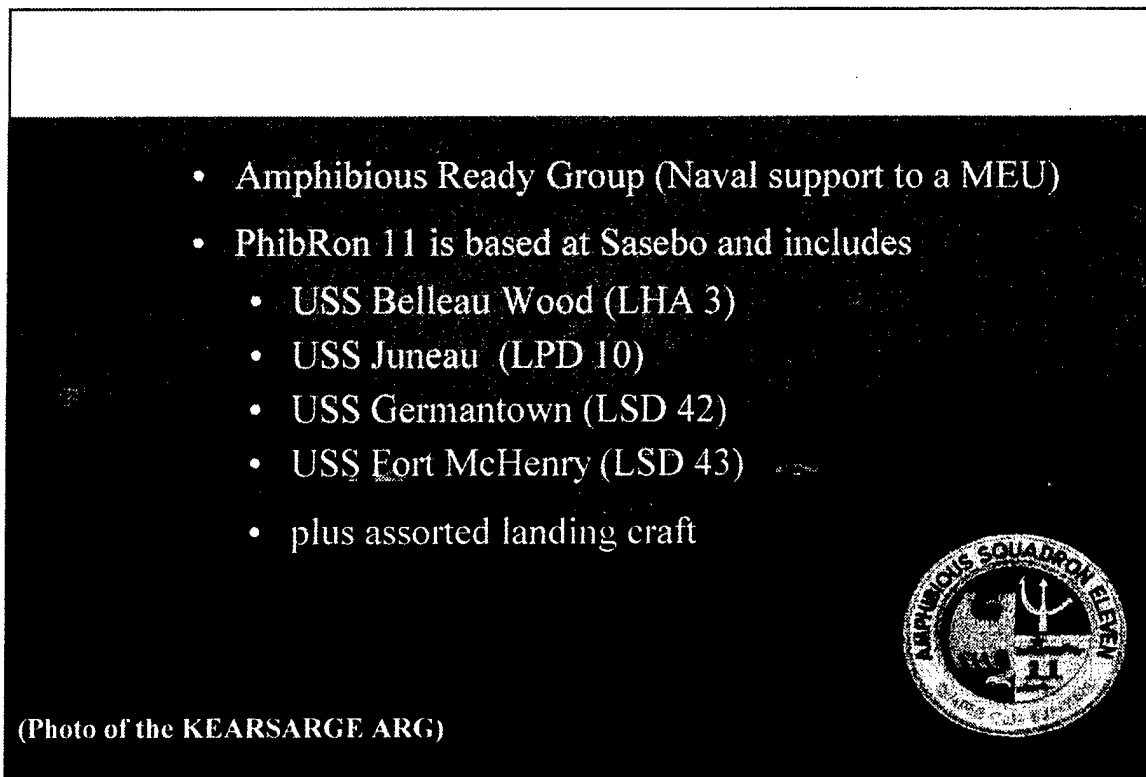


Figure 23. CSSE (MSSG-31)

The combat service support element is one of the two permanent parts of the MEU. CSSE, 31 MEU, UIC M29048, is assigned to Camp Kinser, Okinawa.

1.25 ARG (PhibRon 11)**Figure 24. ARG (PhibRon 11)**

The ARG shown in Figure 24 is similar to PhibRon 11. The landing craft carried on these ships are air cushioned vehicles. LCUs or LCMs can be substituted for these LCACs. In addition to the landing craft, a PhibRon carries a Seal team. Normally, a PhibRon consists of three ships. Currently, another LSD is added to PhibRon 11; possibly for detached operations in East Timor. The capabilities of these ships are described in the following figures.

Note that ships rotate in and out of squadrons; the above composition of the PhibRon is the Spring 2000 assignment.

1.26 USS Belleau Wood LHA 3



	Commissioned 23 Sep 1978
	Length 834 feet
	Displacement 39,300 tons
	Speed 24 knots
	Range 10,000 miles @ 20 knots
Capacity:	
Troops 1,703	
Cargo 105,900 cu ft	
LCACs 1	
Helos 42	

Figure 25. USS Belleau Wood LHA 3

The USS Belleau Wood shown in Figure 25 is a Tarawa class amphibious assault ship.

1.27 USS Juneau LPD 10



	<p>Commissioned 12 Aug 1969 Length 570 feet Displacement ~17,000 tons Speed 21 knots Range 7,700 miles @ 20 knots</p>
<p>Capacity:</p> <ul style="list-style-type: none">Troops 840Cargo 51,100 cu ftLCACs 1Helos ~9 + UAV	

Figure 26. USS Juneau LPD 10

USS Juneau is an Austin class amphibious transport dock. The pictures in Figure 26 are of the USS Juneau underway and of USS Austin, LPD 4, a sister ship of USS Juneau. USS Dubuque, LPD 8, was in PhibRon 11 until recently when it was replaced by USS Juneau.

L28 USS Germantown, LSD 42, and USS Fort McHenry, LSD 43

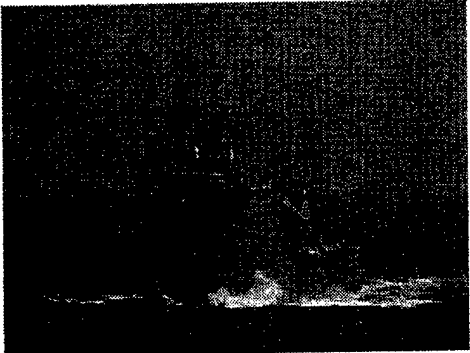

	<p>Commissioned 8 Feb 1986 & 8 Aug 1987</p>
	<p>Length 609 feet</p>
	<p>Displacement 15,725 tons</p>
	<p>Speed 22 knots</p>
	<p>Range 8,000 miles @ 18 knots</p>
<p>Capacity:</p>	
<p>Troops 454</p>	
<p>Cargo 5,100 cu ft</p>	
<p>LCACs 4</p>	
<p>Helos 0-2</p>	

Figure 27. USS Germantown, LSD 42, and USS Fort McHenry, LSD 43

USS Germantown and USS Fort McHenry shown in Figure 27 are Whidbey Island class dock landing ships. The upper picture shows the USS Germantown and a CH-46 with a sling load. The second picture is of an LCU docking in a LSD. LCUs can be substituted for LCACs.

(THIS PAGE INTENTIONALLY LEFT BLANK)

APPENDIX A. PROJECT CONTRIBUTORS

1. PROJECT TEAM

a. Project Director

Mr. Louis J. Albert, Operational Capability Assessments - Northeast Asia Division

b. Other Contributors

LTC Thomas M. Kastner

Mr. Barry P. Groves

2. PRODUCT REVIEW

Mr. Ron Iekel

(THIS PAGE INTENTIONALLY LEFT BLANK)

APPENDIX B. REQUEST FOR ANALYTICAL SUPPORT

P *Performing Division:* NE *Account Number:* 99119

A *Tasking:* Verbal *Mode (Contract-Yes/No):* No

R *Acronym:* MARNEA

T

Title: Update Marine Corps Data for OCA-NEA

1 *Start Date:* 26-Jul-99 *Estimated Completion Date:* 30-Nov-99

Requestor/Sponsor (i.e., DCSOPS): CAA *Sponsor Division:* OCA-NEA

Resource Estimates: a. *Estimated PSM:* 1 b. *Estimated Funds:* \$0.00

c. *Models to be:* None

Description/Abstract:

Become knowledgeable on US Marine Corps and collect data for use in OCA-NEAs theater warfare simulations. Marine Corps doctrine and force structure are changing; MEB formations have been abolished and the MEU formations are being revised. Gather data on the changed USMC for use in CEM and TACWAR. The desired product is a revised database and a briefing.

Study Director/POC Signature: *Original Signed*

Phone#: 703-806-5522

Study Director/POC: Mr. Louis Albert

If this Request is for an External Project expected to consume 6 PSM or more, Part 2 Information is Not Required. See Chap 3 of the Project Directors' Guide for preparation of a Formal Project Directive.

Background:

P

A

R *Scope:*

T

2

Issues:

Milestones:

Signatures *Division Chief Signature:* *Original Signed and Dated* *Date:*

Division Chief Concurrence:

Sponsor Signature: *Original Signed and Dated* *Date:*

Sponsor Concurrence (COL/DA Div Chief/GO/SES)

(THIS PAGE INTENTIONALLY LEFT BLANK)