

IDA

INSTITUTE FOR DEFENSE ANALYSES

Army Combat Potential FY 1962 – FY 2000

John R. Brinkerhoff

January 2001

Approved for public release;
distribution unlimited.

IDA Document D-2498

Log: H 00-002323

Form SF298 Citation Data

Report Date <i>("DD MON YYYY")</i> 00012001	Report Type N/A	Dates Covered (from... to) <i>("DD MON YYYY")</i>
Title and Subtitle Army Combat Potential FY 1962-FY 2000		Contract or Grant Number
Authors Brinkerhoff, John R.		Program Element Number
Performing Organization Name(s) and Address(es) Institute for Defense Analyses 1801 N. Beauregard St. Alexandria, VA 22311		Project Number
Sponsoring/Monitoring Agency Name(s) and Address(es)		Task Number
Distribution/Availability Statement Approved for public release, distribution unlimited		Work Unit Number
Supplementary Notes		Performing Organization Number(s)
Abstract		Monitoring Agency Acronym
Subject Terms		Monitoring Agency Report Number(s)
Document Classification unclassified	Classification of SF298 unclassified	
Classification of Abstract unclassified	Limitation of Abstract unlimited	
Number of Pages 47		

This work was conducted under contract DASW01 98 C 0067, Task BA-6-1866, for the Director, Program Analysis and Evaluation. The publication of this IDA document does not indicate endorsement by the Department of Defense, nor should the contents be construed as reflecting the official position of that Agency.

© 2000, 2001 Institute for Defense Analyses, 1801 N. Beauregard Street, Alexandria, Virginia 22311-1772 • (703) 845-2000.

This material may be reproduced by or for the U.S. Government pursuant to the copyright license under the clause at DFARS 252.227-7013 (NOV 95).

INSTITUTE FOR DEFENSE ANALYSES

IDA Document D-2498

Army Combat Potential FY 1962 – FY 2000

John R. Brinkerhoff

PREFACE

This document partially fulfills the task entitled “Organization and Manning of the Institutional Army,” performed by the Institute for Defense Analyses for the Office of the Director, Program Analysis and Evaluation. The overall task is to define and assess the Institutional Army, including a historical survey of the Army force structure, personnel strength allocations, and funds spent on operational and support forces from the end of World War II until present day. This document describes the Army’s combat potential as determined by the aggregate number of combat battalions and battalion equivalents. It was reviewed by Mr. Michael Leonard, Mr. Daniel L. Cuda, and Mr. Stanley A. Horowitz of IDA.

CONTENTS

Preface.....	iii
Summary	S-1
Introduction.....	1
Analyses	5
Conclusions.....	20
Appendix.....	A-1

FIGURES

1. Definition of Combat Battalions	2
2. Combat Battalions in Recent Wars.....	5
3. Total Combat Battalions by Major Category FY1962–FY2000	7
4. Army Combat Battalions by Component FY1962–FY2000	8
5. Active Army Combat Battalions by Category FY1962–FY2000.....	9
6. Army National Guard Combat Battalions by Category FY1962–FY2000.....	10
7. Army Reserve Combat Battalions by Category FY1962–FY2000.....	11
8. Infantry Battalions by Type FY1962–FY2000	12
9. Maneuver Battalions by Component	13
10. Active Army Maneuver Battalions by Weight	14
11. Total Army Maneuver Battalions by Weight	15
12. Total Army Fire Support Battalions by Type FY1962–FY2000.....	16
13. Fire Support Battalions by Component FY1962–FY2000	17
14. Mix of Maneuver, Reconnaissance, and Fire Support Battalions.....	18
15. Personnel to Combat Battalion Ratio FY1962–FY2000	29

SUMMARY

This paper uses the ratio of total military and civilian personnel to the aggregate number of combat battalions to estimate the efficiency of the Army in providing combat potential. The aggregate number of combat battalions is used to represent the output of the Army in terms of combat potential. The aggregate number of military personnel in the active Army, Army National Guard, and the Army Reserve and the number of civilian employees is used to represent the resources the Army used to provide combat battalions. The number of personnel used by the Army to create and support one combat battalion is a rough measure of the Army's efficiency in producing combat potential. This measure provides insights into the historical trends of the balance between the Expeditionary Army and the Institutional Army.

The numbers and types of combat battalions and battalion equivalents in the Army, Army National Guard, and Army Reserve from the end of FY1962 through the end of FY2000 were obtained from the Forces File of the Future Years Defense Program (FYDP) and rearranged to aggregate combat battalions and battalion equivalents by type. Figure S-1 shows the total number of combat battalions of all types by component from FY1962 through FY2000.

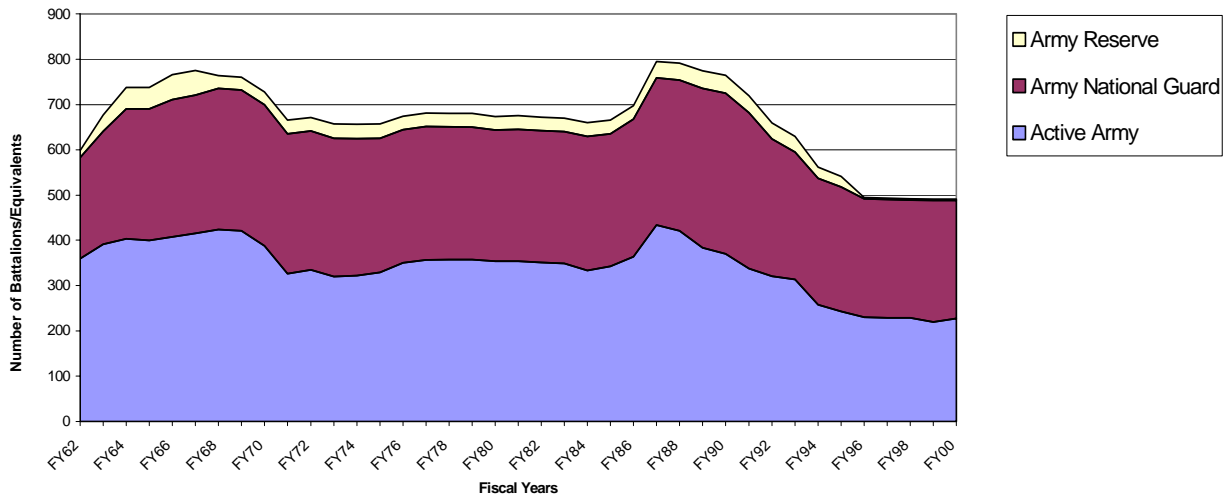


Figure S-1. Army Combat Battalions by Component FY1962–FY2000

Combat battalions are of the following types: infantry, tank, cavalry, reconnaissance, field artillery, surface-to-surface missile, air defense artillery, surface-to-air missile, combat aviation, and special forces. In addition to the FYDP data, the numbers and types of combat battalions in the Army during World War II and the Korean War have been estimated from historical sources to provide a broader basis for this record of combat potential.

The ratio of the total military and civilian strength of the Army to the total number of combat battalions provides a rough measure of the efficiency of the Army in producing combat potential. Figure S-2 shows the number of personnel the Army used to support a single combat battalion from FY1962 to FY2000.

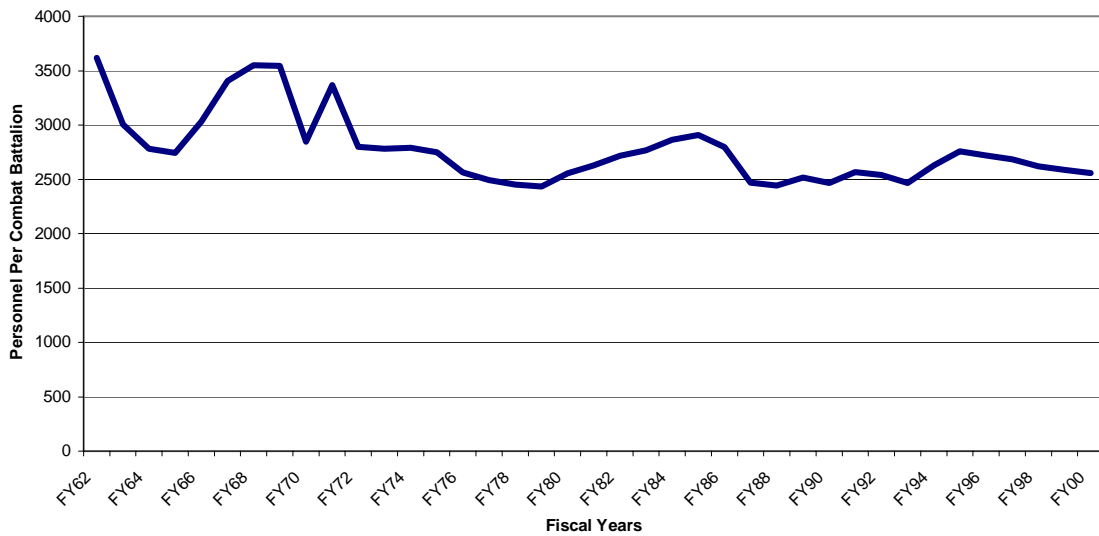


Figure S-2. Personnel Per Combat Battalion FY1962-FY2000

The ratio shown in Figure S-2 suggests that the Army has become more efficient over the past 39 years in producing combat potential. In the Vietnam War, it took about 3,500 personnel to support one combat battalion. In the post-Vietnam drawdown, the Army was able to support one combat battalion with 2,500 personnel. During the Cold War buildup, it took about 3,000 personnel to support a combat battalion, but for the past decade the Army has been able to support a combat battalion with about 2,500 personnel. There is no indication that the Army has become less efficient or burdened by excessive overhead.

INTRODUCTION

In discussing the evolution of the Army's combat potential from FY1962 through FY2000, this paper—

- Traces the variation in the number and mix of Army combat battalions since FY1962.
- Shows how the Army force structure has changed over the past 39 years to meet the needs of the Nation.
- Uses the aggregate number of combat battalions as a rough output measure to indicate the trend in the Army's overall combat-to-support ratio.

This paper incorporates three terms that need to be defined at the outset.¹

- A *military force* is “any body of persons that combines for the purpose of waging or threatening to wage aggressive or defensive military conflict with respect to any other body of persons.”
- *Combat potential* is the “pre-combat latent designed capacity of a [military] force to achieve useful results in combat.” Combat potential is converted into combat power when combat starts. Combat potential is the measure (or descriptor) adopted in this paper to express the capability of the Army's force structure.
- *Combat battalions* interact by design with the enemy either in direct contact or by application of firepower while not in direct contact.² The aggregate number of combat battalions describes the combat potential of a military force.

¹ The first two terms are derived from *A Concise Theory of Combat*, by Edmund L. DuBois, Wayne P. Hughes, Jr., and Lawrence J. Low, published in 1997 by the Institute for Joint Warfare Analysis, Naval Postgraduate School, in collaboration with The Military Conflict Institute (TMCI). This document may be viewed at the TMCI Web site: www.militaryconflict.com.

² The approach is derived from John R. Brinkerhoff, “CONAF Methodology Paper 2-73, Definition and Use of Combat Battalions,” U.S. Army Concepts Analysis Agency, 21 June 1973. In this paper the term “combat module” has been discarded in favor of the term “combat battalion.”

Combat Battalions

The Army subdivides the army-in-the-field into three general categories of units: combat, combat support, and combat service support. The classification of combat battalions used in this paper differs in some respect from current Army practice. For example, field artillery battalions that were once classified as combat have been reclassified as combat support, although it is clear that these units engage the enemy by design by the application of firepower and provide some of the output of a force in combat. Combat battalions include battalions and squadrons, and separate companies, troops, and batteries of infantry, armor, reconnaissance, cavalry, field artillery, air defense artillery, combat aviation, special forces, and special operations aviation units. The unit types categorized in this report as combat battalions are shown below in Figure 1.

Infantry Battalions
Light Infantry Type Battalions [light, airborne, mountain, air assault, ranger, and TOW light anti-tank (TLAT)]
Medium Infantry Battalions (infantry, motorized)
Mechanized Infantry Battalions
Tank Battalions
Reconnaissance Battalions
(reconnaissance, armored cavalry, air cavalry, air reconnaissance)
Field Artillery Battalions
Light Field Artillery (105mm)
Medium Field Artillery (155mm, 175mm, 8")
Rocket Artillery (MLRS)
Surface-to-Surface Missile Battalions
Surface-to-Air Missile Battalions
Air Defense Battalions
Attack Helicopter Battalions
Special Operations Battalions (special forces, special operations aviation)

Figure 1. Definition of Combat Battalions

Combat battalions provide greater granularity and precision in describing land combat potential than can be achieved by using larger formations. Divisions, brigades, and brigade task forces are large combined arms formations that include a variable mix and number of combat units, as well as combat support and combat service support units. The composition of divisions and brigades has varied significantly over time, and at any one time there are several different sizes and shapes of these organizations in the force structure. Using the number of divisions or brigades to describe land combat potential is

convenient but conveys an inaccurate and imprecise impression. Addressing land combat potential in terms of combat battalions provides a better basis for analysis than using larger organizations for this purpose.

Although providing more precision than brigades and divisions, battalions and companies also come in a wide variety of sizes and shapes. They have changed composition over the years, and there may be several versions in the force structure at any one time. Aggregating the number of tank battalions, for example, introduces an error if the battalions are equipped with different models of tanks. A tank battalion with 78 M1A1 tanks has a different combat potential than a tank battalion with 54 M60A1 tanks. These errors can be reduced by making allowances for difference by weighting the various specific unit types according to their contribution to overall combat potential. Doing this, however, requires knowledge of the primary characteristics of each specific type of combat battalion, and that has not been attempted in this paper.

The aggregation of all kinds of combat battalions to achieve a single number that purports to represent the combat potential of a force or of a force structure is fraught with peril. However, it is better than simply counting brigades and divisions.

Methodology

The data for the period FY1962–FY2000 are from the Forces File of the Future Years Defense Program (FYDP).³ They are the official numbers of combat and combat support battalions and separate companies in the Army force structure at the end of fiscal years as reported by the Army. The basic data are arrayed by component (Active, National Guard, Army Reserve) and resource identification code (RIC), which identifies the specific type of unit.

The table of combat battalions was prepared in the following manner. Each entry in the database represents a unit type identified by a RIC and grouped by component. The first step was to sort the data by RIC into group-like units. The second step was to aggregate each unit type by component. The third step was to delete the units that were not combat battalions or separate companies. The fourth step was to compute battalion equivalents by summing separate companies of a type (or a set of types) and dividing by

³ Courtesy of David Drake, Cost Analysis and Research Division, Institute for Defense Analyses.

three. The fifth and final step was to aggregate battalions and battalion equivalents into major categories of combat battalions to provide time series data. A table of the basic data used to construct the charts in this paper is appended.

FYDP data were available for FY1962 to FY2000. Annual force structure data from FY1945 to FY1961 have not yet been found. The number and mix of combat battalions has been estimated for the maximum strengths for World War II and (with considerable difficulty) the Korean War. Attempts will be made to locate battalion-level troop lists for the period FY1945 to FY1961.

The FYDP Forces File contains some inconsistencies that may or may not be errors. These inconsistencies may stem in part from changes over the years in the Army's method of accounting for units and in part from differences between programmed and actual forces that have not been reconciled. For this reason, the appended table of basic data needs to be reviewed by the Army to ensure that it is a correct historical record. Some of the areas of concern are as follows.

The mix of infantry battalions is confusing during the last 10 years of the Forces File from the end of FY1990 to the end of FY2000. It is difficult to track the transition of the Army National Guard from a predominantly infantry force to a force consisting of light and mechanized battalions. The part of the table showing these units has been modified to smooth out the changes in numbers of battalions.

Infantry scout battalions of the Alaska National Guard are shown from FY1962 to FY1972 and again from FY1987 to FY2000. It is possible that these units existed from FY1968 to FY1973 in some other form.

The phaseout of Hawk surface-to-surface missile battalions was accomplished by the end of FY1997, but a single entry of two battalions shows in the force structure at the end of FY2000. This was accompanied by a reduction of four Patriot battalions. This inconsistency has been smoothed out by zeroing out the two Hawk battalions and adding two Patriot battalions.

Air Defense battalions and battalion equivalents are confusing, in part because so many of these units were configured as separate batteries. In order to calculate battalion equivalents for the 40mm Duster batteries, the rule was that four batteries would constitute a battalion equivalent instead of three companies or batteries as was applied for all other units.

The presentation has been simplified to show battalions and battalion equivalents. Battalion equivalents were computed by aggregating separate combat companies (of which there have at times been many) and then dividing by three. This procedure introduces error because some battalions have had four line companies or batteries, and battalions often include weapons companies or combat support companies that are not adequately represented by an aggregation of three separate companies.

ANALYSIS

The combat battalion data have been arrayed in different ways to illustrate various characteristics of the force structure. Several charts follow, accompanied by commentary.

Figure 2 shows the total number and mix of various types of combat battalions at the maximum strengths for World War II and later conflicts, and for the Future Army programmed for the initial years of the 21st century.

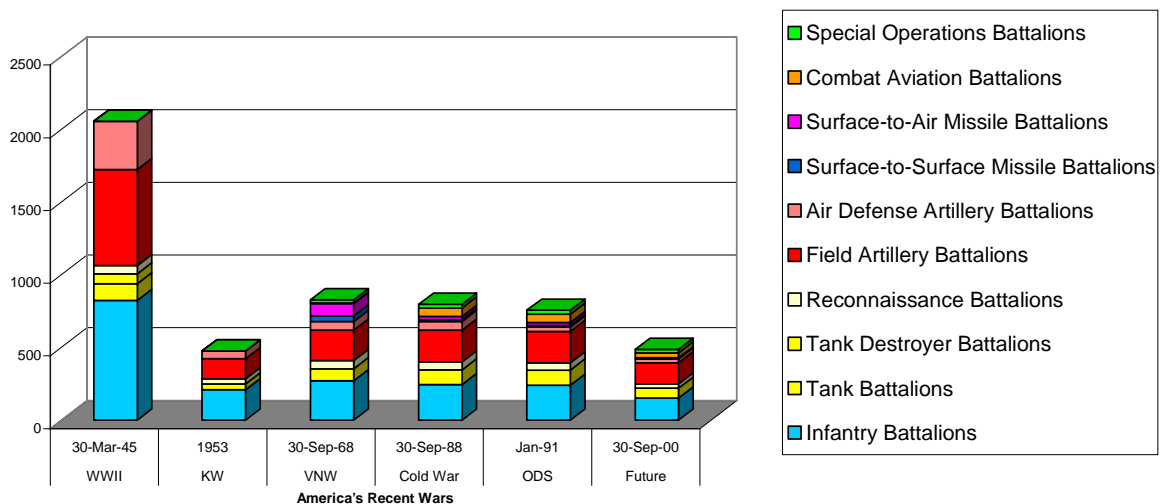


Figure 2. Combat Battalions at Selected Times

The Army raised for World War II was the largest aggregation of land combat potential in this century. It was predominantly infantry, but there were also numerous tank battalions and a large number of artillery battalions. These data, derived from the Official History, include the National Guard and Army Reserve (both on active duty for the war), and the Army of the United States (AUS).

The Army for the Korean War resembled the World War II Army in most respects but was much smaller. These data are estimates of active Army units and National Guard units on active duty and are based on order of battle information. They do not include National Guard and Army Reserve units not on active duty.

After the end of the Korean War, the Army was transformed from an infantry force with tank support into a predominately heavy force of tank and mechanized infantry battalions with some infantry and light infantry battalions. To fight in Vietnam, the Army added combat aviation units and light infantry battalions but did not reduce its heavy forces. After the War in Vietnam, the Army's force structure was optimized to fight a conventional battle in Europe against the Warsaw Pact and emphasized heavy combat battalions and surface-to-surface missile units. In the final years of the Cold War, the Army increased the number of light infantry battalions but did so by converting medium infantry battalions into light battalions without reducing the heavy combat battalions. The combat battalion mix of the Future Army resembles very much the Army that fought and won Operation Desert Storm, albeit with fewer battalions.

Table 1 shows a rough measure of the efficiency of the Army at the high points for each of these wars. Total military and civilian strength is divided by the total number of combat battalions supported to show the number of personnel needed to support a combat module. The data for World War II include the Regular Army, Army National Guard, Army Reserve, and Army of the United States—all on active duty. The data for the Korean War include the Regular Army and that part of the National Guard that was called to active duty during the war. For the Vietnam War and after, the data include the Total Army—Active, Guard, and Reserve.

Table 1. Personnel Needed to Support A Combat Battalion in Recent Wars

	World War II* 30 Mar 1945	Korean War 30 Jun 1953	Vietnam War 30 Sep 1968	Cold War 30 Sep 1988	Desert Storm 31 Sep 1990	Future Army 30 Sep 2000
Military & Civilian Strength (000s)	7,865	1,696	2,713	1,949	1,885	1,255
Total Combat Battalions	2,055	476	786	791	765	491
Total Personnel per Combat Battalion	3,827	3,563	3,452	2,464	2,464	2,556

* Combat battalions as of 30 March 1945 and personnel strength as of 30 June 1945.

To make the ratio comparable with the ratios for later wars, the number of combat battalions for the Vietnam War has been increased by 24 special operations battalions, based on 8 special forces groups, each credited with 3 battalion equivalents.

Table 1 indicates that the Army has made considerable progress in reducing the total personnel needed to support a combat battalion. The personnel required to support a combat battalion in the Korean War and the Vietnam War decreased by about 300 from World War II. After the end of the Vietnam War, the Army was able to reduce personnel per combat battalion by another thousand from those needed during the 1950s and 1960s. The personnel to combat battalion ratio for the Army at the end of FY2000 is consistent with the experience of the 1990s and represents a decrease of almost 1,800 from the ratio experienced in World War II.

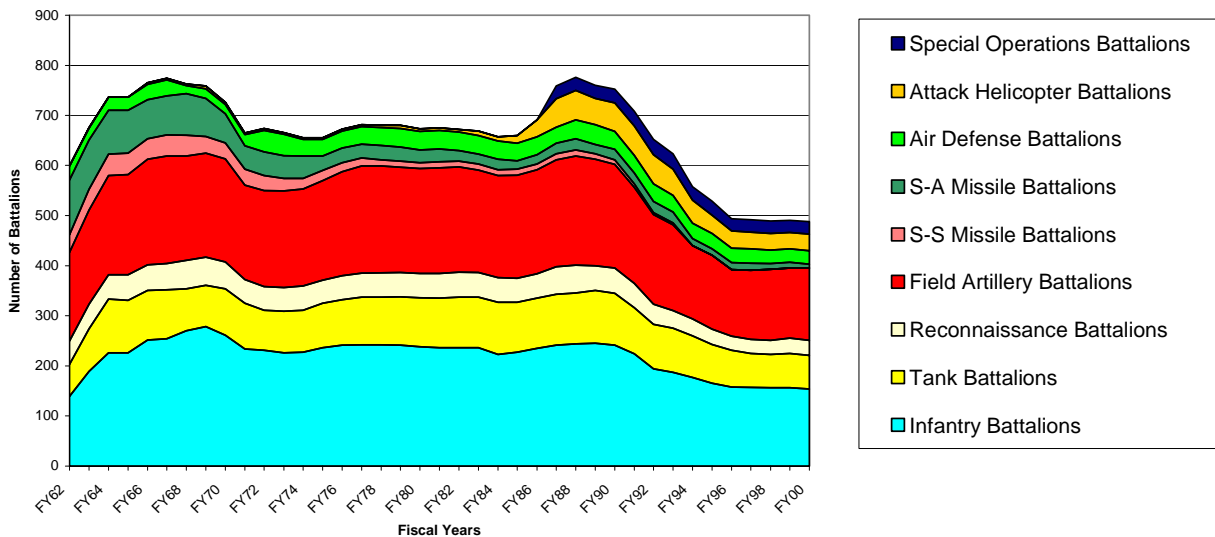


Figure 3. Total Combat Battalions by Major Category FY1962–FY2000

Figure 3 shows the number and mix of combat battalions in all three Army components since FY1962. The number of combat battalions increased significantly for the Vietnam War (1964–1971) as well as for the buildup of conventional war capability that occurred during the final days of the Cold War (1981–1989).

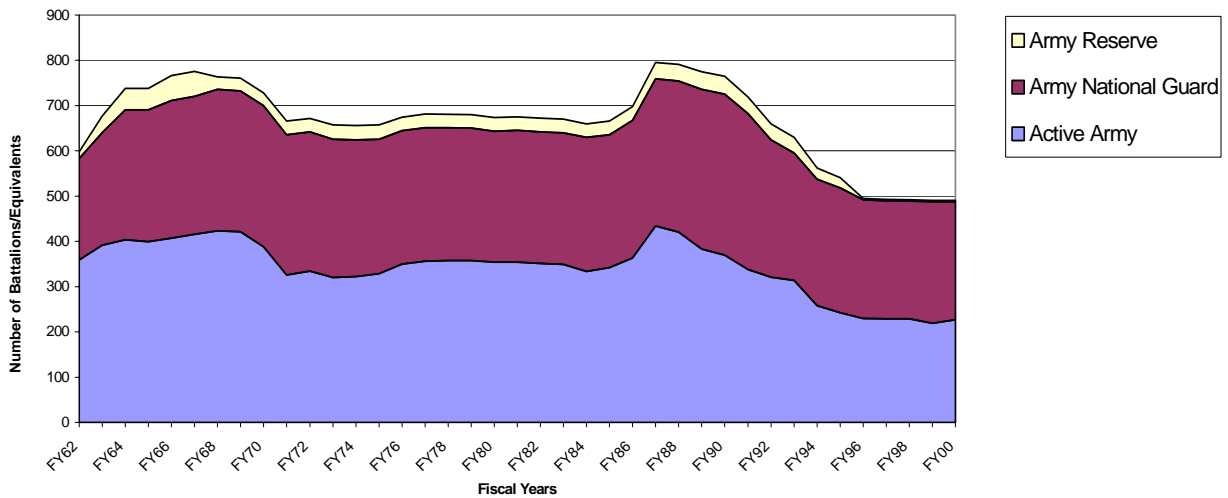


Figure 4. Army Combat Battalions by Component FY1962–FY2000

Figure 4 shows the relative contribution to Army land combat potential by each of the three components. The combat potential of the Active Army increased only slightly during the Vietnam War. The greatest increase in the Active deployable force structure during that period was in combat support and combat service support units that were in the Reserve components but were not brought to active duty for service in that war. During the Vietnam War there was a substantial increase in the combat potential of the Army National Guard and an additional increase during the Cold War buildup in the 1980s. The Army Reserve contributed a small amount of combat potential that was created at the beginning of this period and lasted until the mid-1990s, when almost all Army Reserve combat units were eliminated.

Total Army combat potential was reduced significantly after the end of the Cold War in 1989, continued to decline through FY1996, and has remained level from that point on. In this drawdown of combat potential from the FY1987 high point, more active battalions were eliminated than National Guard battalions.

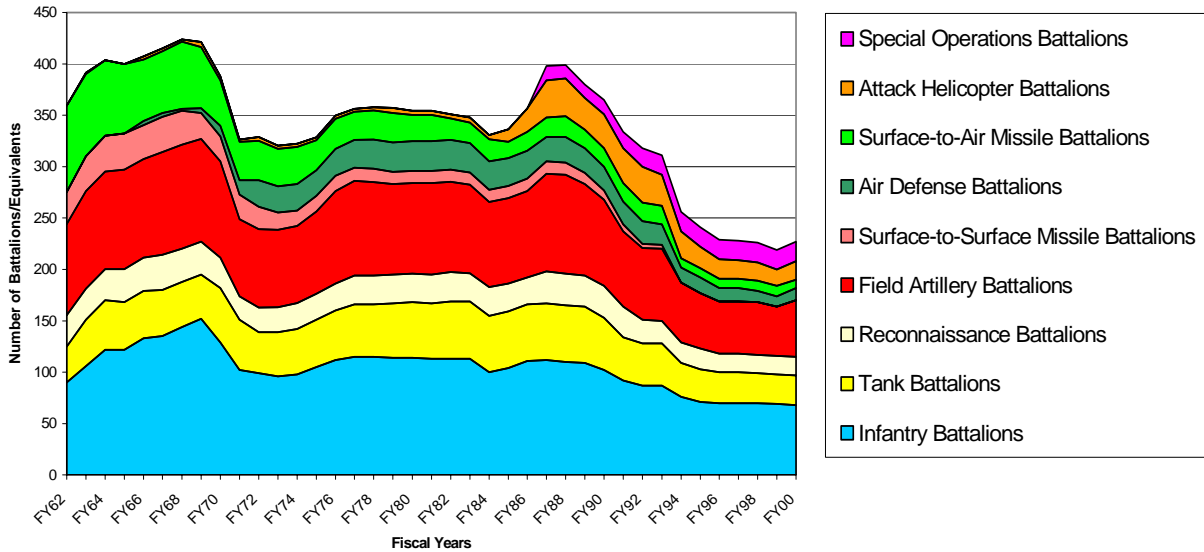


Figure 5. Active Army Combat Battalions by Category FY1962–FY2000

Figure 5 shows the combat battalions in the Active Army during the period of interest. The Active Army entered the 1960s with about 360 combat battalions and entered the 21st century with about 240 combat battalions. Over the past 40 years, surface-to-surface missile battalions have left the force structure, and the number of surface-to-air missile battalions has decreased significantly. Combat aviation battalions did not exist in FY1962 but now are numerous, contributing substantially to combat potential. Special Forces battalions appear as such in FY1988. From FY1962 to FY1987 this capability was organized into Special Forces Groups, which were not listed in the FYDP.

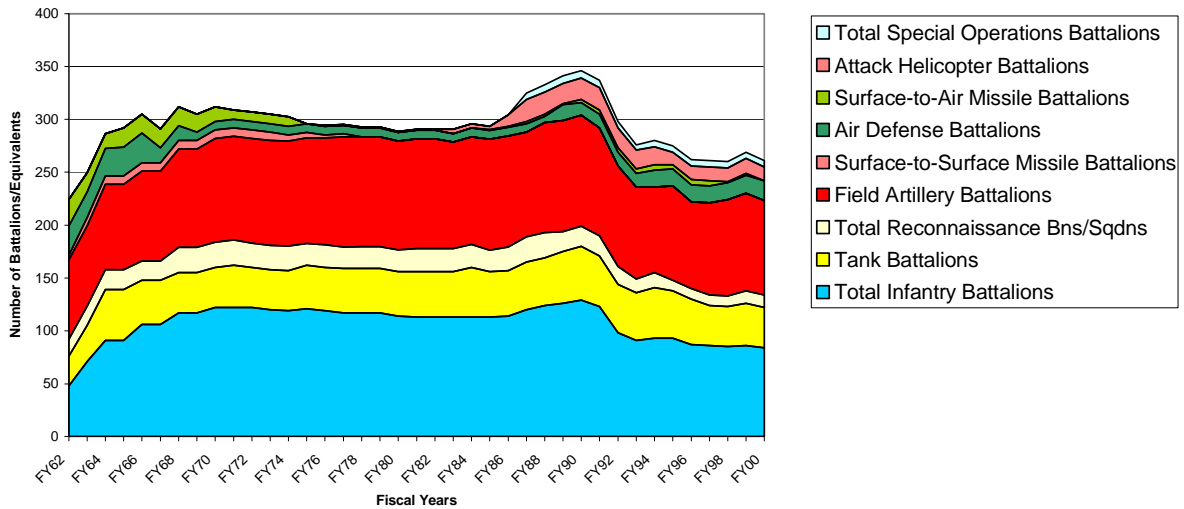


Figure 6. Army National Guard Combat Battalions by Category FY1962–FY2000

The initial FYDP database for FY1962 showed 224 combat battalions in the Army National Guard (Figure 6). This number included 28 air defense gun battalion equivalents and 25 surface-to-air missile battalions, 4 surface-to-surface missile battalions, 75 field artillery battalions, 16 reconnaissance battalions, and 76 maneuver battalions. From FY1962 through FY1964 the Army National Guard and Army Reserve were transformed from forces with a large number of under-strength and unequipped units to forces with fewer units adequately manned and equipped. Before FY1962, many guard and Reserve units were at cadre strength, had no equipment, and were not well trained. During the transformation, 2,100 Guard and Reserve units, including 15 National Guard and 6 Army Reserve divisions, were eliminated, and the resources were reallocated to the remaining units.⁴ When active Army combat units started deploying to Vietnam in 1965, the Army wanted to provide a backup strategic reserve force in the National Guard and formed a Selected Reserve Force consisting of 3 National Guard divisions, six separate brigades, and corps troops.⁵ This force was staffed at 90% of wartime requirements and given high priority for training and equipment fill. By the end of FY1966, the National Guard had increased to a total of 304 combat battalions, including 148 maneuver battalions, 18 reconnaissance battalions, and 85 field artillery battalions—all in reasonably good condition. The number of National Guard combat battalions stayed at about 300 during the first 25 years of this period, then increased to

⁴ John R. Brinkerhoff, *Army Force Structure for Land Combat: 1917–1997*, Unpublished Manuscript, 1996.

⁵ John B. Wilson, *The Evolution of Divisions and Separate Brigades*, The Army Lineage Series, Center of Military History, United States Army, 1998, pp. 328–329.

almost 350 during the Cold War buildup of the 1980s. After significant post-Cold War reductions to 261 combat battalions at end FY2000, the Guard is programmed to have its combat battalions reduced even more in the first 5 years of the 21st century.

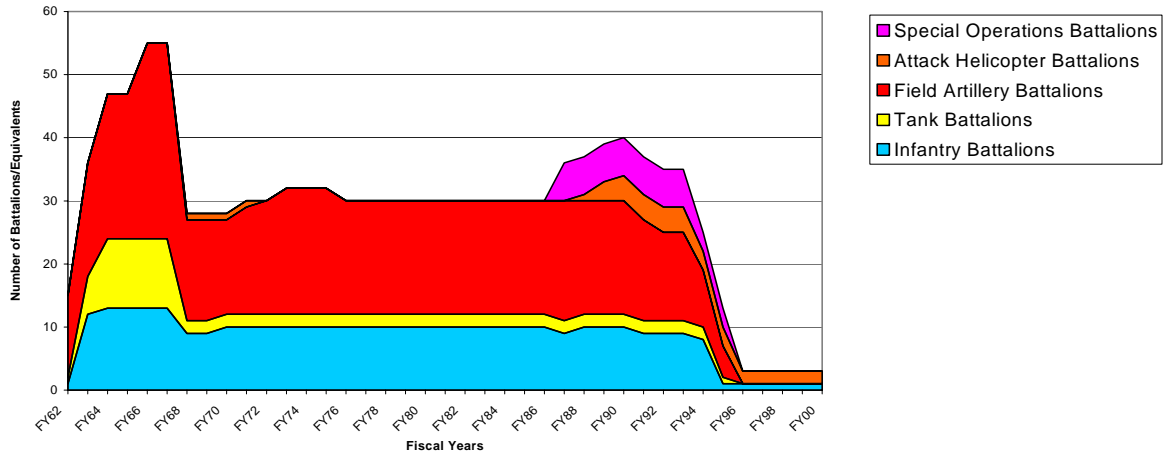


Figure 7. Army Reserve Combat Battalions by Category FY1962–FY2000

The Army Reserve became a source of ready combat battalions with the transformation in 1963–1964 that eliminated many cadre units but provided substantial people and equipment for the remaining units. In the first FYDP database for FY1962, the Army Reserve was shown to have 1 infantry, 1 tank, and 13 field artillery battalions. After the transformation, the Army Reserve had three separate brigades, several separate infantry and tank battalions, and a significant number of field artillery battalions (Figure 7). During most of the Cold War, the Army Reserve had about 30 combat battalions. After the Off-Site Agreement of 1993, the Army Reserve ceased to be a major provider of combat battalions, keeping only one infantry battalion and two combat aviation battalions. The infantry battalion is the 100/442nd Infantry Battalion, Hawaii, which was a famous Japanese-American unit that fought well in Italy during World War II. After the loss of its combat units, the Army Reserve has been able to concentrate on its core competencies of combat support, combat service support, and training support.

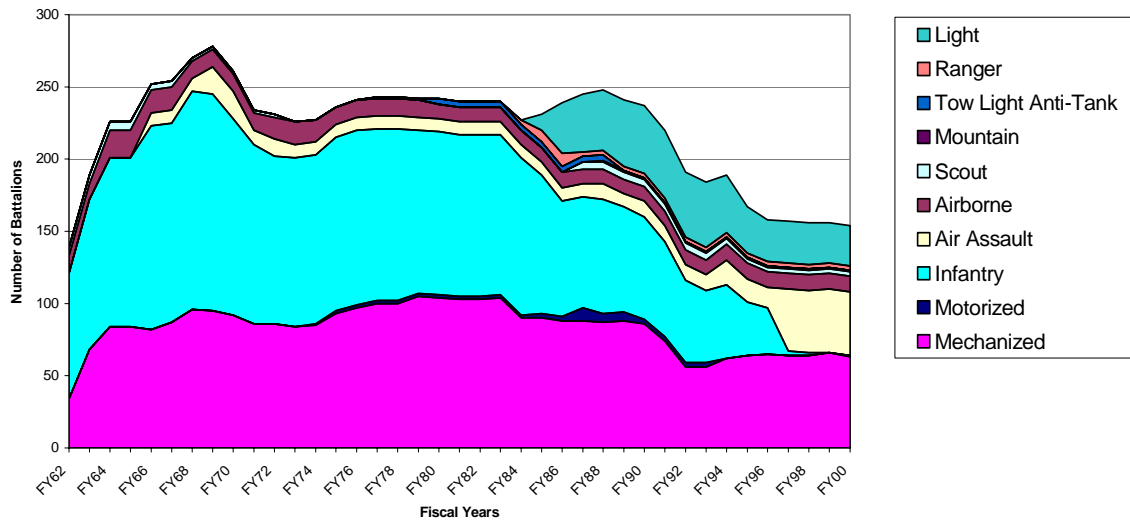


Figure 8. Infantry Battalions by Type FY1962–FY2000

Figure 8 shows the pattern of infantry battalions during the period. The key point is the trend toward a large number of types of infantry battalions, with the mechanized battalions increasing dramatically at the start of the period of interest and the remaining relatively constant in numbers thereafter. The Army introduced and discarded the motorized battalions and the tow light anti-tank battalions. The large number of medium (or “leg”) infantry battalions in the force in FY1964 were converted into light infantry type battalions. The remaining National Guard infantry battalions were all converted in the mid-1990s into smaller air assault battalions to save on manpower authorizations.

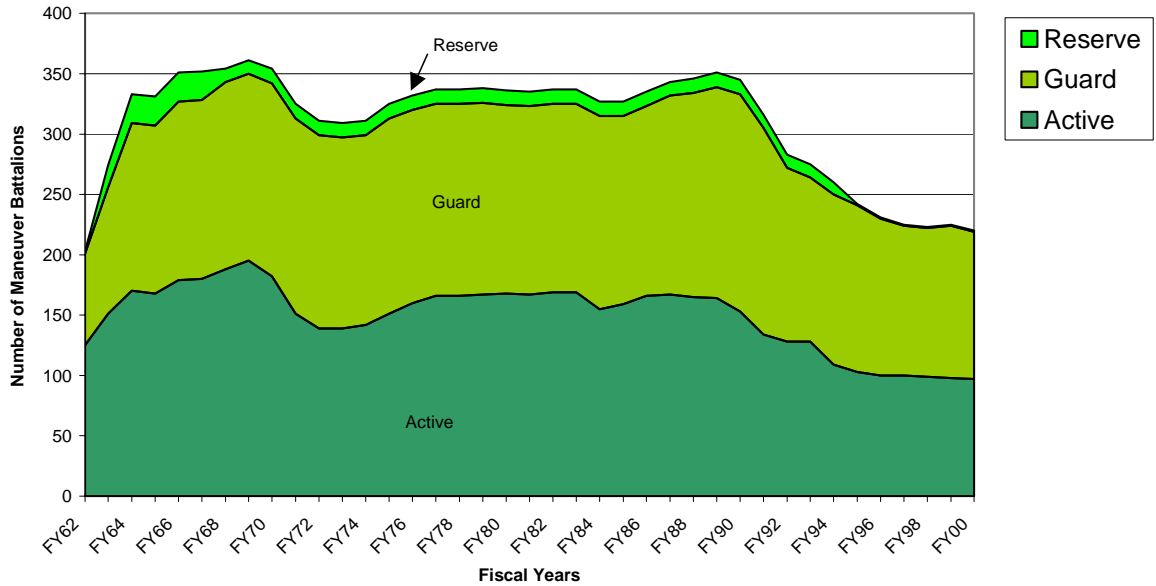


Figure 9. Maneuver Battalions by Component

Maneuver battalions are the infantry and tank battalions that move tactically on the battlefield to close with and destroy the enemy. Figure 9 shows the relative contribution of the Army's three components to the total number of maneuver battalions. During the entire period, about half of the total battalions were available in the Active Army. From FY1964 to FY1994 the Army Reserve contributed few maneuver battalions. Active maneuver battalions were increased substantially for the Vietnam War and reduced sharply after that war was concluded. The Active Army remained steady after that until the post-Cold War drawdown to the Base Force. Guard maneuver battalions were increased during the 1980s defense buildup. After the end of the Cold War and the Persian Gulf War, the number of maneuver battalions was reduced significantly to levels that were about the same as existed in FY1962, except that the number of Active Army maneuver battalions is somewhat lower than in FY1962.

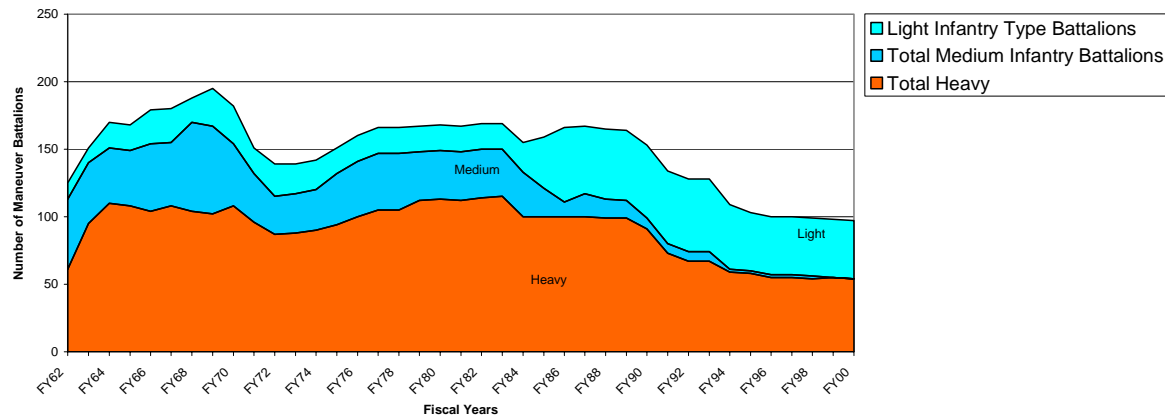


Figure 10. Active Army Maneuver Battalions by Weight

Figure 10 illustrates the division of the Army during the 1980s into two roughly equal parts, one heavy and the other light. The Active Army entered the 1960s with a substantial number of medium maneuver battalions but ended up almost 40 years later with no medium battalions and an almost equal division between heavy and light maneuver battalions. In the mid-1960s, several medium battalions and a few light battalions were created to assist in waging the war in Vietnam. This was done without decreasing the number of heavy maneuver battalions, which remained constant during the war. After the drawdown in the mid-1970s, the number of heavy battalions was increased in the early 1980s to face the Soviet Union in Europe. Thus, when the new light divisions were introduced in the late 1980s, the new light maneuver battalions were created at the expense of the medium battalions, which disappeared from the force. After the end of the Cold War, the reductions in maneuver battalions were taken equally from heavy and light battalions, leaving the Army a force that is about half heavy and half light at the dawn of the 21st century.

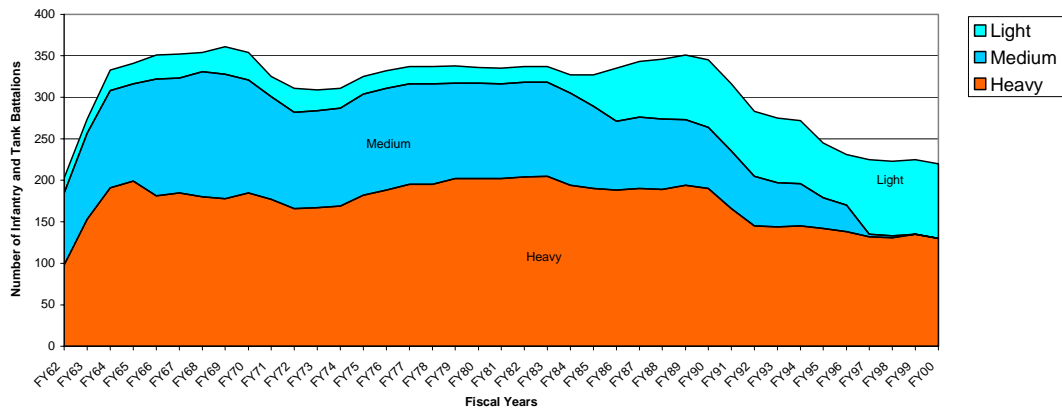


Figure 11. Total Army Maneuver Battalions by Weight

The total number of maneuver battalions (including Guard and Reserve battalions) shown in Figure 11 shows the same trend toward half-heavy and half-light that was evident in Figure 10. Medium battalions remained longer in the Guard than in the Active Army, but in the late 1990s all were converted to light (air assault) battalions to save manpower spaces. Because the National Guard is a heavier force, the Total Army mix at the end of FY2000 is about 40% light and 60% heavy.

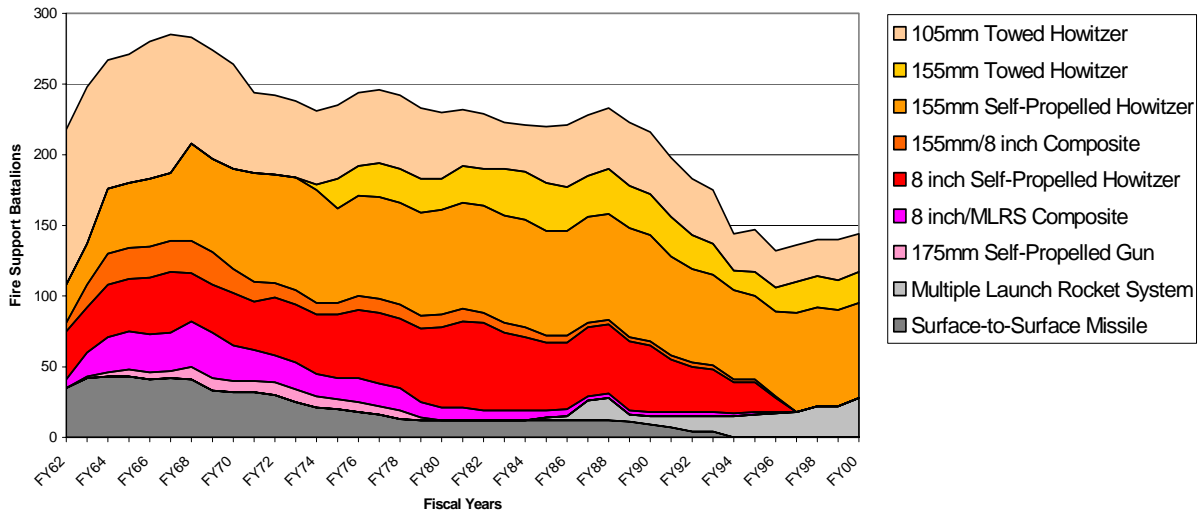


Figure 12. Total Army Fire Support Battalions by Type FY1962–FY2000

Figure 12 shows the mix of fire support battalions and battalion equivalents, including field artillery and surface-to-surface missiles (SSMs). A significant number of SSM battalions existed in 1962, but their number declined by the mid-1980s and eventually all were replaced by the Multiple Launch Rocket System (MLRS). The 175mm gun battalions provided long-range field artillery support during the Vietnam War but were reduced and then phased out of the force structure in the 1980s. The 8-inch howitzer was phased out of the force in the 1980s in favor of 155mm howitzers with extended range and improved accuracy. By the end of the period of interest, the heavy forces were supported by self-propelled 155mm howitzers and the light forces by towed 105mm howitzers and a newly developed towed 155mm howitzer to provide general support for light divisions. As with maneuver battalions, fire support battalions are about evenly divided between towed (light) and self-propelled (heavy) weapons.

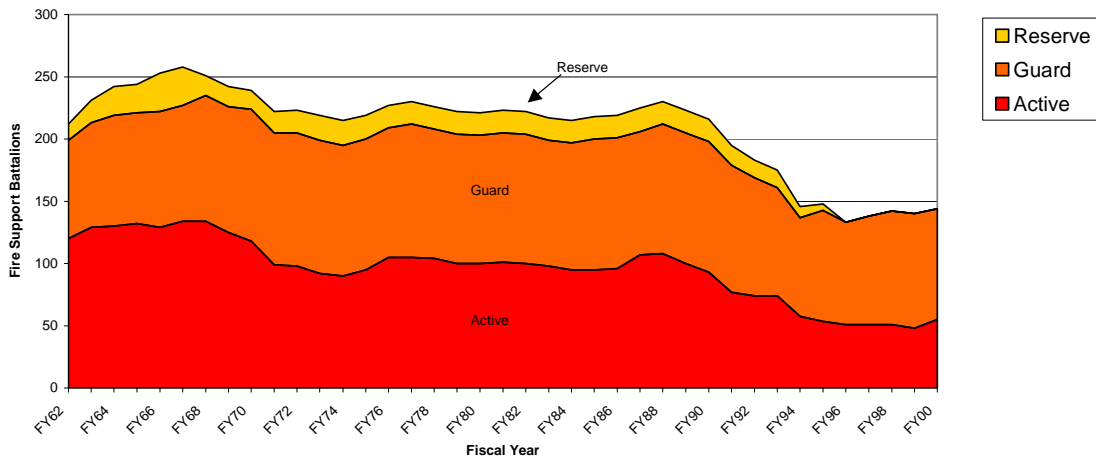


Figure 13. Fire Support Battalions by Component FY1962–FY2000

Figure 13 shows the allocation of fire support battalions and battalion equivalents among the Army’s three components. The allocation remains very much the same until the drawdown of the 1990s, when the Army Reserve lost its fire support battalions, and a greater share of the remaining units was retained in the National Guard. For FY2000, about 60% of the Army’s fire support battalions are in the National Guard.

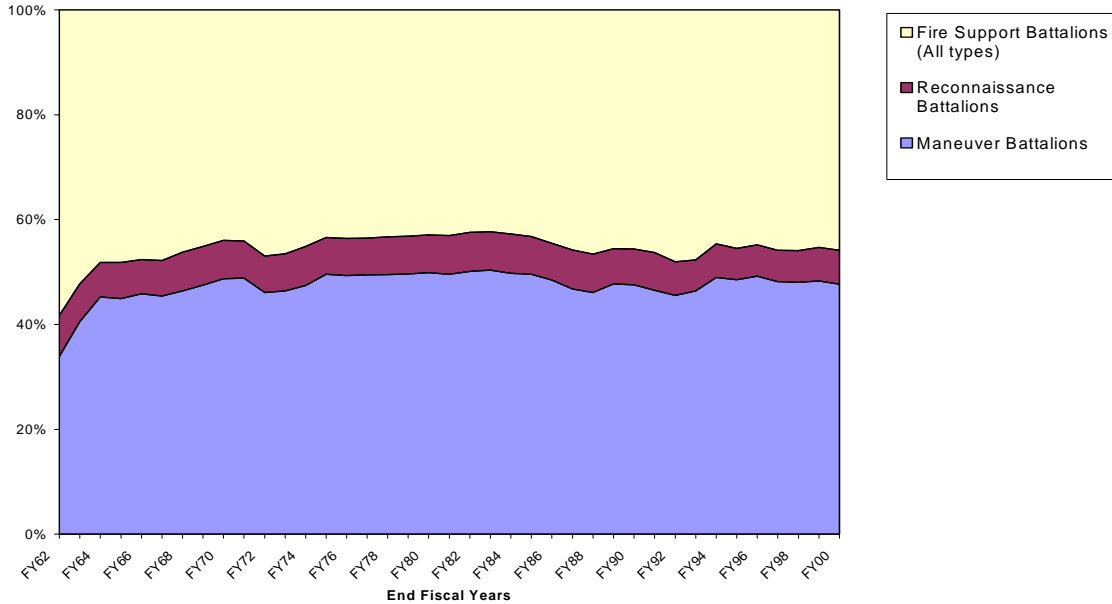


Figure 14. Mix of Maneuver, Reconnaissance, and Fire Support Battalions

Figure 14 shows the relative mix, or proportions, of the Army’s combat battalions divided into three groups: maneuver, reconnaissance, and fire support. For this purpose, the fire support category includes field artillery, surface-to-surface missile, surface-to-air missile, air defense, and attack helicopter (or combat aviation) battalions.

The first 3 years of this period are influenced by the presence of a large number of surface-to-air missile battalions engaged in the air defense of CONUS and not available for operations of the army-in-the-field.

During the rest of this period, covering 35 years, the proportions of the Army’s combat battalions have remained remarkably stable. During periods of build up and periods of downsizing, regardless of the strategy and doctrine, and despite the addition of new weapons and the removal of old weapons, the Army has remained about the same in this aspect of its composition.

45% to 50% of the combat battalions are for maneuver

6% to 8% of the combat battalions are for reconnaissance

42% to 48% of the combat battalions provide fire support

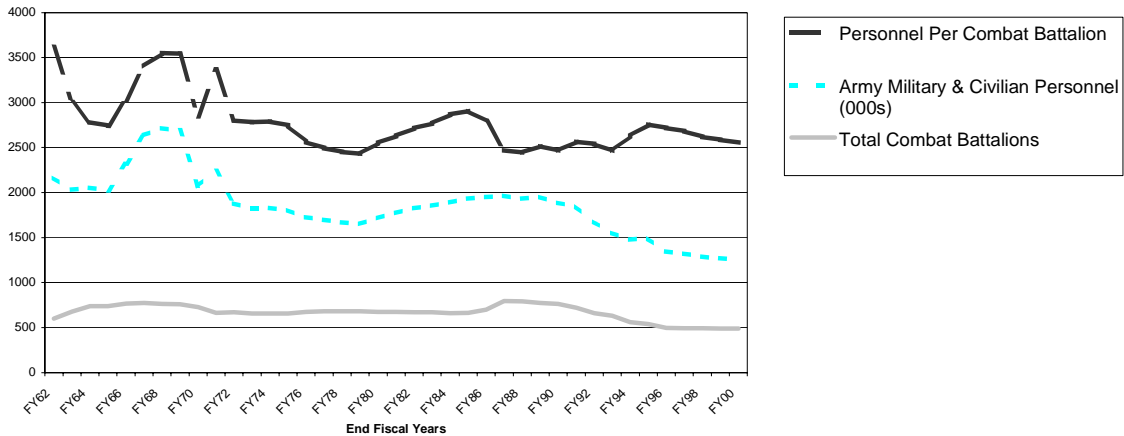


Figure 15. Personnel to Combat Battalion Ratio FY1962–FY2000

Figure 15 compares the number of combat battalions in the Army force structure with the total military and civilian strength at the end of each fiscal year during the period of interest. The top line in black shows for the end of each fiscal year the number of personnel used to support a single combat module. During this period of almost 40 years the number of personnel used to support one combat battalion ranges from a high of 3,619 at the end of FY1962 to a low of 2,431 at the end of FY1979. During the decade of the Vietnam War (FY1964–FY1973), the average number of personnel required to provide a combat battalion was 3,140. During the 20 years starting with FY1981, the average was 2,637. The efficiency of the Army in this respect appears to decrease during periods of buildup for combat operations. In general, over the last 20 years or so, the Army has been able to support each combat battalion with fewer people than it could during the World War II, the Korean War, or the Vietnam War.

The results of this research suggest that in the past 20 years the Army has become more efficient in producing combat potential from its total personnel strength than in earlier years. This observation does not consider the impact of transfers of functions and personnel to defense agencies or of contracting out, which would reduce the gains in efficiency. On the other hand, it does not take into account the fact that combat battalions of today are much more capable than those of yesterday. If the qualitative improvement of each combat battalion were taken into consideration, the Army’s efficiency, according to this measure, would have increased even more than shown in Figure 15.

CONCLUSIONS

This compilation of combat battalions provides a preliminary basis for assessing the way in which Army force managers have in the past balanced the competing constraints of budgetary restraints, future investment needs, and the demand for current combat potential. Some observations are in order.

- During the first 30 of the past 39 years, the Army's combat potential as described by the aggregate number of combat battalions was maintained at a high level to deal with the threat of the Soviet Union, and even more combat potential was added to deal with the Vietnam War and the final phase of the Cold War. Since the end of the Cold War, the army's combat potential has declined to about two-thirds of its high values during the Vietnam War and the final phase of the Cold War.
- Whether by design or instinct, the mix of combat battalions in the Army's force structure has been remarkably consistent over four decades despite major fluctuations in strength and the introduction of new weapons and new doctrine. This is either a good thing because it recognizes the enduring basic nature of land combat or a bad thing because it reflects organizational inertia carried to an extreme.
- The aggregate number of combat battalions is a useful description of the combat potential of a force structure or a force within that force structure.
- The use of the aggregate number of combat battalions as a measure of combat potential does not take into account variations of the battalions among types and, within a type, variations in output.
- The combat battalion database could be extended to the next level of detail to account for differences within a single unit type.
- The ratio of total personnel to the aggregate number of combat battalions over the period from FY1962 to FY2000 does not reveal any discontinuities or adverse trends that would substantiate a hypothesis that the Army is becoming inefficient from having excessive overhead. The ratio does suggest that the Army has become more efficient in recent years in extracting combat potential from its military members and civilian workforce.

Appendix
ARMY COMBAT BATTALIONS BY TYPE

Army Combat Battalions and Battalion Equivalents
FY1962 - FY2000

	FY62	FY63	FY64	FY65	FY66	FY67	FY68	FY69	FY70	FY71	FY72	FY73	FY74	FY75
Light Type Infantry Battalions														
Light Infantry Battalions														
Active	0	0	0	0	0	0	0	0	0	0	0	0	0	0
Guard	0	0	0	0	0	0	0	0	0	0	0	0	0	0
Reserve	0	0	0	0	0	0	0	0	0	0	0	0	0	0
Total	0	0	0	0	0	0	0	0	0	0	0	0	0	0
Airborne Battalions														
Active	12	11	19	19	16	16	9	9	9	9	12	13	13	10
Guard	0	0	0	0	0	0	3	3	3	3	3	3	2	2
Total	12	11	19	19	16	16	12	12	12	12	15	16	15	12
Air Assault Battalions														
Active	0	0	0	0	9	9	9	19	19	10	12	9	9	9
Guard	0	0	0	0	0	0	0	0	0	0	0	0	0	0
Reserve	0	0	0	0	0	0	0	0	0	0	0	0	0	0
Total	0	0	0	0	9	9	9	19	19	10	12	9	9	9
Scout Battalions - Guard	6	6	6	6	4	4	2	2	2	2	2	0	0	0
Mountain Battalions - Guard	0	0	0	0	0	0	0	0	0	0	0	0	0	0
Ranger Battalions - Active	0	0	0	0	0	0	0	0	0	0	0	0	0	0
Light Anti-Tank Battalions - Guard	0	0	0	0	0	0	0	0	0	0	0	0	0	0
Total	0	0	0	0	0	0	0	0	0	0	0	0	0	0
Total Light Type Infantry Battalions	12	11	19	19	25	25	18	28	28	19	24	22	22	19
Active	6	6	6	6	4	4	5	5	5	5	5	3	2	2
Guard	0	0	0	0	0	0	0	0	0	0	0	0	0	0
Reserve	0	0	0	0	0	0	0	0	0	0	0	0	0	0
Total	18	17	25	25	29	29	23	33	33	24	29	25	24	21
Medium Infantry Battalions														
Infantry Battalions														
Active	52	45	41	41	50	47	66	65	46	36	28	29	29	36
Guard	34	50	66	66	81	81	76	76	80	80	80	80	80	76
Reserve	1	9	10	10	10	10	9	9	10	8	8	8	8	8
Total	87	104	117	117	141	138	151	150	136	124	116	117	117	120
Motorized Battalions - Active	0	0	0	0	0	0	0	0	0	0	0	0	1	2
Total Medium Infantry Battalions	52	45	41	41	50	47	66	65	46	36	28	29	30	38
Active	34	50	66	66	81	81	76	76	80	80	80	80	80	76
Guard	1	9	10	10	10	10	9	9	10	8	8	8	8	8
Reserve	1	9	10	10	10	10	9	9	10	8	8	8	8	8
Total	87	104	117	117	141	138	151	150	136	124	116	117	118	122

Army Combat Battalions and Battalion Equivalents
FY1962 - FY2000

	FY76	FY77	FY78	FY79	FY80	FY81	FY82	FY83	FY84	FY85	FY86	FY87	FY88	FY89
Light Type Infantry Battalions														
Light Infantry Battalions														
Active	0	0	0	0	0	0	0	0	0	11	26	28	30	30
Guard	0	0	0	0	0	0	0	0	0	0	9	12	12	13
Reserve	0	0	0	0	0	0	0	0	0	0	0	0	0	3
Total	0	0	0	0	0	0	0	0	0	11	35	40	42	46
Airborne Battalions														
Active	10	10	10	10	10	10	10	10	10	10	11	10	10	10
Guard	2	2	2	2	2	2	2	2	2	2	2	2	2	2
Total	12	12	12	12	12	12	12	12	12	12	13	12	12	12
Air Assault Battalions														
Active	9	9	9	9	9	9	9	9	9	9	9	9	9	9
Guard	0	0	0	0	0	0	0	0	0	0	0	0	0	0
Reserve	0	0	0	0	0	0	0	0	0	0	0	0	0	0
Total	9	9	9	9	9	9	9	9	9	9	9	9	9	9
Scout Battalions - Guard														
Mountain Battalions - Guard	0	0	0	0	0	0	0	0	0	0	0	0	0	1
Ranger Battalions - Active	0	0	0	0	0	0	0	0	0	3	8	9	3	3
Light Anti-Tank Battalions - Guard	0	1	1	1	4	4	4	4	4	4	4	4	4	4
Total Light Type Infantry Battalions	19	19	19	19	19	19	19	19	22	38	55	50	52	52
Active	2	2	2	2	2	2	2	2	2	2	2	2	2	2
Guard	0	0	0	0	0	0	0	0	0	0	0	0	0	0
Reserve	0	0	0	0	0	0	0	0	0	0	0	0	0	0
Total	21	21	21	21	19	19	19	19	22	38	64	67	72	78
Medium Infantry Battalions														
Active	39	40	40	34	34	34	34	33	31	18	8	8	8	7
Guard	74	71	71	71	71	70	70	70	70	70	64	62	63	61
Reserve	8	8	8	8	8	8	8	8	8	8	7	7	8	5
Total	121	119	119	113	113	112	112	111	109	96	80	77	79	73
Motorized Battalions - Active														
Total Medium Infantry Battalions	41	42	42	36	36	36	36	35	33	21	11	17	14	13
Active	74	71	71	71	71	70	70	70	70	70	64	62	63	61
Guard	8	8	8	8	8	8	8	8	8	8	7	7	8	5
Reserve	123	121	121	115	115	114	114	113	111	99	83	86	85	79
Total														

Army Combat Battalions and Battalion Equivalents
FY1962 - FY2000

	FY90	FY91	FY92	FY93	FY94	FY95	FY96	FY97	FY98	FY99	FY00
Light Type Infantry Battalions											
Light Infantry Battalions											
Active	30	30	30	30	23	18	18	18	18	18	18
Guard	14	14	12	12	14	13	10	10	10	10	10
Reserve	3	3	3	3	3	1	1	1	1	1	0
Total	47	47	45	45	40	32	29	29	29	28	28
Airborne Battalions											
Active	10	10	10	10	11	11	11	11	11	11	11
Guard	0	0	0	0	0	0	0	0	0	0	0
Total	10	10	10	10	11	11	11	11	11	11	11
Air Assault Battalions											
Active	11	11	11	11	11	11	11	11	11	11	11
Guard	0	0	0	0	6	5	3	32	32	32	32
Reserve	0	0	0	0	0	0	0	0	0	0	1
Total	11	11	11	11	17	16	14	43	43	44	44
Scout Battalions - Guard	5	5	5	5	4	3	3	3	3	3	3
Mountain Battalions - Guard	1	1	1	1	1	1	1	1	1	1	1
Ranger Battalions - Active	3	3	3	3	3	3	3	3	3	3	3
Light Anti-Tank Battalions - Guard	4	4	4	4	3	0	0	0	0	0	0
Total Light Type Infantry Battalions	54	54	54	54	48	43	43	43	43	43	43
Active	24	24	21	21	25	22	17	46	46	46	46
Guard	3	3	3	3	3	1	1	1	1	1	1
Reserve	81	81	78	78	76	66	61	90	90	90	90
Total											
Medium Infantry Battalions											
Infantry Battalions											
Active	5	4	4	4	2	2	2	2	2	2	0
Guard	61	58	49	42	36	35	1	1	0	0	0
Reserve	5	4	4	4	3	0	0	0	0	0	0
Total	71	66	57	50	41	37	32	3	2	0	2
Motorized Battalions - Active	3	3	3	3	0	0	0	0	0	0	0
Total Medium Infantry Battalions											
Active	8	7	7	7	2	2	2	2	2	2	0
Guard	61	58	49	42	36	35	16	1	0	0	0
Reserve	5	4	4	4	3	0	0	0	0	0	0
Total	74	69	60	53	41	37	18	3	2	2	0

Army Combat Battalions and Battalion Equivalents
FY1962 - FY2000

	FY62	FY63	FY64	FY65	FY66	FY67	FY68	FY69	FY70	FY71	FY72	FY73	FY74	FY75
Mechanized Infantry Battalions														
Active	26	50	62	62	58	63	60	59	55	47	47	45	46	48
Guard	8	15	19	19	21	21	36	36	37	37	37	37	37	43
Reserve	0	3	3	3	3	3	0	0	0	2	2	2	2	2
Total	34	68	84	84	82	87	96	95	92	86	86	84	85	93
Total Infantry Battalions														
Active	90	106	122	122	133	135	144	152	129	102	99	96	98	105
Guard	48	71	91	91	106	106	117	117	122	122	122	120	119	121
Reserve	1	12	13	13	13	13	9	9	10	10	10	10	10	10
Total	139	189	226	226	252	254	270	278	261	234	231	226	227	236
Tank Battalions														
Active	35	45	48	46	46	45	44	43	53	49	40	43	44	46
Guard	28	34	48	48	42	42	38	38	38	40	38	38	38	41
Reserve	1	6	11	11	11	11	2	2	2	2	2	2	2	2
Total	64	85	107	105	99	98	84	83	93	91	80	83	84	89
Total Maneuver Battalions														
Active	125	151	170	168	179	180	188	195	182	151	139	139	142	151
Guard	76	105	139	139	148	148	155	155	160	162	160	158	157	162
Reserve	2	18	24	24	24	24	11	11	12	12	12	12	12	12
Total	203	274	333	331	351	352	354	361	354	325	311	309	311	325
Reconnaissance Battalions														
Armored Cavalry Squadrons														
Active	29	29	29	26	26	26	24	22	20	17	18	18	19	19
Guard	16	18	18	18	18	18	20	20	20	20	23	23	23	20
Reconnaissance Battalions														
Active	0	0	0	0	0	0	0	0	0	0	0	0	0	0
Guard	0	0	0	0	0	0	0	0	0	0	0	0	0	0
Air Cavalry Squadrons*														
Active	1	1	1	6	6	8	8	10	9	6	6	6	6	6
Guard	0	0	1	1	0	0	4	4	4	4	0	0	0	1
Regimental Aviation Squadrons														
Active	0	0	0	0	0	0	0	0	0	0	0	0	0	0
Guard	0	0	0	0	0	0	0	0	0	0	0	0	0	0
Air Reconnaissance Squadrons - Active														
Total Reconnaissance Battalions														
Active	30	30	30	32	32	34	32	32	29	23	24	24	25	25
Guard	16	18	19	19	18	18	24	24	24	24	23	23	23	21
Total	46	48	49	51	50	52	56	56	53	47	47	47	49	46

Notes: *indicates battalion equivalents include in total.
Totals may not equal sum of component totals due to rounding.

Army Combat Battalions and Battalion Equivalents
FY1962 - FY2000

	FY76	FY77	FY78	FY79	FY80	FY81	FY82	FY83	FY84	FY85	FY86	FY87	FY88	FY89
Mechanized Infantry Battalions														
Active	52	54	54	59	59	58	58	59	45	45	45	45	44	44
Guard	43	44	44	44	43	43	43	43	43	43	41	41	41	42
Reserve	2	2	2	2	2	2	2	2	2	2	2	2	2	2
Total	97	100	100	105	104	103	103	104	90	90	88	88	87	88
Total Infantry Battalions	112	115	115	114	114	113	113	113	100	104	111	112	110	109
Active	119	117	117	117	114	113	113	113	113	113	114	120	124	126
Guard	10	10	10	10	10	10	10	10	10	10	10	9	10	10
Reserve	241	242	242	241	238	236	236	236	223	227	235	241	244	245
Tank Battalions	48	51	51	53	54	54	56	56	55	55	55	55	55	55
Active	41	42	42	42	42	43	43	43	47	43	43	45	45	49
Guard	2	2	2	2	2	2	2	2	2	2	2	2	2	2
Reserve	91	95	95	97	98	99	101	101	104	100	100	102	102	106
Total	160	166	166	167	168	167	169	169	155	159	166	167	165	164
Total Maneuver Battalions	160	159	159	159	156	156	156	156	160	156	157	165	169	175
Active	12	12	12	12	12	12	12	12	12	12	12	11	12	12
Guard	332	337	337	338	336	335	337	337	327	327	335	343	346	351
Reconnaissance Battalions	20	20	20	20	20	20	20	20	20	20	20	20	19	19
Armored Cavalry Squadrons	20	19	19	19	19	20	20	20	20	20	21	21	21	16
Active	0	0	0	0	0	0	0	0	0	0	1	2	5	4
Guard	0	0	0	0	0	0	0	0	0	0	1	1	1	1
Air Cavalry Squadrons*	6	8	8	8	8	8	8	7	8	7	4	2	3	4
Active	1	1	2	2	2	2	2	2	2	0	0	0	0	0
Guard	0	0	0	0	0	0	0	0	0	0	0	0	0	0
Regimental Aviation Squadrons	0	0	0	0	0	0	0	0	0	0	0	3	3	3
Active	0	0	0	0	0	0	0	0	0	0	0	2	2	2
Guard	0	0	0	0	0	0	0	0	0	0	0	1	1	0
Air Reconnaissance Squadrons - Active	26	28	28	28	28	28	28	27	28	27	26	31	31	30
Total Reconnaissance Battalions	21	20	21	21	21	22	22	22	22	20	22	24	24	19
Active	47	48	49	49	49	50	50	49	50	47	48	55	55	49
Guard														
Total														

Notes: *indicates battalion equivalents include in total.
Totals may not equal sum of component totals due to rounding.

Army Combat Battalions and Battalion Equivalents
FY1962 - FY2000

	FY90	FY91	FY92	FY93	FY94	FY95	FY96	FY97	FY98	FY99	FY00
Mechanized Infantry Battalions											
Active	40	31	26	26	26	26	25	25	25	26	25
Guard	44	41	28	28	32	36	40	39	39	40	38
Reserve	2	2	2	2	2	0	0	0	0	0	0
Total	86	74	56	56	60	62	65	64	64	66	63
Total Infantry Battalions											
Active	102	92	87	87	76	71	70	70	70	69	68
Guard	129	123	98	91	93	93	87	86	85	86	84
Reserve	10	9	9	9	8	1	1	1	1	1	1
Total	241	224	194	187	177	165	158	157	156	156	153
Tank Battalions											
Active	51	42	41	41	33	32	30	30	29	29	29
Guard	51	48	46	45	48	45	43	38	38	40	38
Reserve	2	2	2	2	2	1	0	0	0	0	0
Total	104	92	89	88	83	78	73	68	67	69	67
Total Maneuver Battalions											
Active	153	134	128	128	109	103	100	100	99	98	97
Guard	180	171	144	136	141	138	130	124	123	126	122
Reserve	12	11	11	11	10	1	1	1	1	1	1
Total	345	316	283	275	260	242	231	225	223	225	220
Reconnaissance Battalions											
Armored Cavalry Squadrons											
Active	19	19	13	13	16	16	14	14	14	13	14
Guard	16	16	14	11	13	9	9	9	9	11	11
Reconnaissance Battalions											
Active	4	4	4	4	0	0	0	0	0	1	0
Guard	1	1	1	1	0	0	0	0	0	0	0
Air Cavalry Squadrons*											
Active	4	3	3	2	0	0	0	0	0	0	0
Guard	0	0	0	0	0	0	0	0	0	0	0
Regimental Aviation Squadrons											
Active	3	3	2	2	2	2	2	2	2	2	2
Guard	2	2	2	1	1	1	1	1	1	1	1
Air Reconnaissance Squadrons - Active											
Active	1	1	1	1	2	2	2	2	2	2	2
Total Reconnaissance Battalions											
Active	31	30	23	22	20	20	18	18	18	18	18
Guard	19	19	17	13	14	10	10	10	10	12	12
Total	50	49	40	35	34	30	28	28	28	30	30

Notes: *indicates battalion equivalents include in total.
Totals may not equal sum of component totals due to rounding.

Army Combat Battalions and Battalion Equivalents
FY1962 - FY2000

	FY62	FY63	FY64	FY65	FY66	FY67	FY68	FY69	FY70	FY71	FY72	FY73	FY74	FY75
Field Artillery Battalions														
105mm Towed Howitzer Battalions*														
Active	66	63	41	41	43	44	40	42	38	24	22	20	19	20
Guard	42	42	43	43	47	47	31	33	31	33	31	32	31	30
Reserve	2	6	7	7	7	7	4	4	3	2	2	2	2	2
Total	110	111	91	91	97	98	75	77	74	57	56	54	52	52
155mm Towed Howitzer Battalions														
Active	0	0	0	0	0	0	0	0	0	0	0	0	4	4
Guard	0	0	0	0	0	0	0	0	0	0	0	0	0	13
Reserve	0	0	0	0	0	0	0	0	0	0	0	0	0	4
Total	0	0	0	0	0	0	0	0	0	0	0	0	4	21
155mm Self-Propelled Howitzer Battalions														
Active	7	8	22	22	21	21	26	23	25	26	27	28	27	30
Guard	18	18	21	21	21	21	40	40	43	45	43	43	44	32
Reserve	2	3	3	3	6	6	3	3	3	6	7	9	9	5
Total	27	29	46	46	48	48	69	66	71	77	77	80	80	67
8' Self-Pr Total														
Active	12	16	16	16	14	17	15	15	18	15	17	17	17	19
Guard	13	8	9	9	9	11	11	11	11	11	16	16	16	18
Reserve	9	8	12	12	17	17	8	8	8	8	8	8	8	8
Total	34	32	37	37	40	43	34	34	37	34	41	41	42	45
155mm/8" Self-Propelled Howitzer Battalions														
Active	4	8	14	14	14	14	15	15	9	6	5	5	3	3
Guard	2	8	8	8	8	8	8	8	8	8	5	5	5	5
Total	6	16	22	22	22	22	23	23	17	14	10	10	8	8
175mm Self-Propelled Gun Battalions														
Active	0	0	2	4	4	4	5	5	4	4	5	5	4	4
Guard	0	0	0	0	0	0	3	3	3	3	3	3	3	2
Reserve	0	1	1	1	1	1	1	1	1	1	1	1	1	1
Total	0	1	3	5	5	5	9	9	8	8	9	9	8	7
8"/MLRS Battalion Equivalents*														
Active	0	0	0	0	0	0	0	0	0	0	0	0	0	0
Guard	0	0	0	0	0	0	0	0	0	0	0	0	0	0
Total	0	0	0	0	0	0	0	0	0	0	0	0	0	0
Multiple Launch Rocket System Battalions*														
Active	0	0	0	0	0	0	0	0	0	0	0	0	0	0
Guard	0	0	0	0	0	0	0	0	0	0	0	0	0	0
Total	0	0	0	0	0	0	0	0	0	0	0	0	0	0
Total Field Artillery Battalions														
Active	89	95	95	97	96	100	101	100	94	75	76	75	75	80
Guard	75	76	81	81	85	85	93	93	98	98	99	99	99	100
Reserve	13	18	23	23	23	31	16	16	15	17	18	20	20	20
Total	177	189	199	201	212	216	210	209	207	190	193	194	194	200

Notes: *indicates battalion equivalents include in total.
Totals may not equal sum of component totals due to rounding.

Army Combat Battalions and Battalion Equivalents
FY1962 - FY2000

	FY76	FY77	FY78	FY79	FY80	FY81	FY82	FY83	FY84	FY85	FY86	FY87	FY88	FY89
Field Artillery Battalions														
105mm Towed Howitzer Battalions*														
Active	21	22	22	20	18	15	14	8	8	13	16	18	18	20
Guard	29	28	28	28	27	23	23	23	23	25	26	23	23	23
Reserve	2	2	2	2	2	2	2	2	2	2	2	2	2	2
Total	52	52	52	50	47	40	39	33	33	40	44	43	43	45
155mm Towed Howitzer Battalions														
Active	4	4	4	4	5	8	8	13	14	13	11	10	10	8
Guard	13	16	16	16	13	16	16	16	16	17	16	15	18	18
Reserve	4	4	4	4	4	2	2	4	4	4	4	4	4	4
Total	21	24	24	24	22	26	26	33	34	34	31	29	32	30
155mm Self-Propelled Howitzer Battalions														
Active	34	35	35	36	37	37	38	39	38	37	37	37	37	37
Guard	34	34	34	34	34	34	34	34	35	34	34	35	35	37
Reserve	3	3	3	3	3	4	4	3	3	3	3	3	3	3
Total	71	72	72	73	74	75	76	76	76	74	74	75	75	77
8' Self-Pr Total														
Active	22	22	21	22	24	25	25	23	20	15	14	16	16	17
Guard	18	19	19	21	24	26	27	23	23	24	24	23	24	23
Reserve	8	9	9	9	9	10	10	9	9	9	9	10	9	9
Total	48	50	49	52	57	61	62	55	52	48	47	49	49	49
155mm/8" Self-Propelled Howitzer Battalions														
Active	5	5	5	4	4	4	3	2	2	0	0	0	0	0
Guard	5	5	5	5	5	5	4	5	5	5	5	3	3	3
Total	10	10	10	9	9	9	7	7	7	5	5	3	3	3
175mm Self-Propelled Gun Battalions														
Active	4	4	4	2	0	0	0	0	0	0	0	0	0	0
Guard	2	2	2	0	0	0	0	0	0	0	0	0	0	0
Reserve	1	0	0	0	0	0	0	0	0	0	0	0	0	0
Total	7	6	6	2	0	0	0	0	0	0	0	0	0	0
8"/MLRS Battalion Equivalents*														
Active	0	0	0	0	0	0	0	1	1	3	3	0	0	3
Guard	0	0	0	0	0	0	0	0	0	0	0	0	0	0
Total	0	0	0	0	0	0	0	1	1	3	3	0	0	3
Multiple Launch Rocket System Battalions*														
Active	0	0	0	0	0	0	0	0	0	2	3	14	15	4
Guard	0	0	0	0	0	0	0	0	0	0	0	0	1	1
Total	0	0	0	0	0	0	0	0	0	2	3	14	16	5
Total Field Artillery Battalions														
Active	90	92	91	88	88	89	88	86	83	83	84	95	96	89
Guard	101	104	104	104	103	104	104	101	102	105	105	99	104	105
Reserve	18	18	18	18	18	18	18	18	18	18	18	19	18	18
Total	209	214	213	210	209	211	210	205	203	206	207	213	218	212

Notes: *indicates battalion equivalents include in total.
Totals may not equal sum of component totals due to rounding.

Army Combat Battalions and Battalion Equivalents
FY1962 - FY2000

	FY90	FY91	FY92	FY93	FY94	FY95	FY96	FY97	FY98	FY99	FY00
Field Artillery Battalions											
105mm Towed Howitzer Battalions*											
Active	19	18	17	17	12	13	12	12	12	12	13
Guard	23	22	21	19	12	17	14	14	14	17	14
Reserve	2	2	2	2	2	0	0	0	0	0	0
Total	44	42	40	38	26	30	26	26	26	29	27
155mm Towed Howitzer Battalions											
Active	7	7	7	7	5	4	4	4	4	3	3
Guard	18	17	13	11	7	12	13	18	18	18	19
Reserve	4	4	4	4	2	1	0	0	0	0	0
Total	29	28	24	22	14	17	17	22	22	21	22
155mm Self-Propelled Howitzer Battalions											
Active	35	31	29	29	25	22	21	21	21	21	21
Guard	37	37	35	33	36	36	39	49	49	47	46
Reserve	3	2	2	2	2	1	0	0	0	0	0
Total	75	70	66	64	63	59	60	70	70	68	67
8' Self-Pr Total											
Active	15	7	5	4	1	0	0	0	0	0	0
Guard	23	22	21	20	18	18	10	0	0	0	0
Reserve	9	8	6	6	3	3	0	0	0	0	0
Total	47	37	32	30	22	21	10	0	0	0	0
155mm/8" Self-Propelled Howitzer Battalions											
Active	0	0	0	0	0	0	0	0	0	0	0
Guard	3	3	3	3	2	2	1	0	0	0	0
Total	3	3	3	3	2	2	1	0	0	0	0
175mm Self-Propelled Gun Battalions											
Active	0	0	0	0	0	0	0	0	0	0	0
Guard	0	0	0	0	0	0	0	0	0	0	0
Reserve	0	0	0	0	0	0	0	0	0	0	0
Total	0	0	0	0	0	0	0	0	0	0	0
8"/MLRS Battalion Equivalents*											
Active	3	3	3	3	3	3	2	2	2	2	0
Guard	0	0	0	0	1	0	0	0	0	0	0
Total	3	3	3	3	4	3	2	2	2	2	0
Multiple Launch Rocket System Battalions*											
Active	5	7	9	10	12	12	12	12	12	12	18
Guard	1	1	2	1	3	4	5	6	10	10	10
Total	6	8	11	11	15	16	17	18	22	22	28
Total Field Artillery Battalions											
Active	84	73	70	70	58	54	51	51	51	48	55
Guard	105	102	95	87	79	89	82	87	91	92	89
Reserve	18	16	14	14	9	5	0	0	0	0	0
Total	207	191	179	171	146	148	133	138	142	140	144

Notes: *Indicates battalion equivalents include in total.
Totals may not equal sum of component totals due to rounding.

Army Combat Battalions and Battalion Equivalents
FY1962 - FY2000

	FY62	FY63	FY64	FY65	FY66	FY67	FY68	FY69	FY70	FY71	FY72	FY73	FY74	FY75
Surface-to-Surface Missile Battalions														
CORPORAL Battalions - Active	2	0	0	0	0	0	0	0	0	0	0	0	0	0
LACROSSE Battalions - Active	2	2	0	0	0	0	0	0	0	0	0	0	0	0
REDSTONE Battalions - Active	1	1	0	0	0	0	0	0	0	0	0	0	0	0
SERGEANT Battalions - Active	3	5	5	5	6	6	6	6	4	4	5	5	2	2
HONEST JOHN Battalions														
Active	17	17	20	20	20	20	20	15	16	16	12	7	4	2
Guard	4	8	8	8	8	8	8	8	8	8	8	8	6	5
Total	21	25	28	28	28	28	28	23	24	24	20	15	10	7
LITTLE JOHN Battalions - Active	5	6	5	5	2	3	2	0	0	0	0	0	0	0
PERSHING Battalions - Active	1	3	5	5	5	5	4	4	4	4	4	4	4	4
LANCE Battalions - Active	0	0	0	0	0	0	0	0	0	0	1	1	5	7
Total Surface-to-Surface Missile Battalions														
Active	31	34	35	35	33	34	33	25	24	24	22	17	15	15
Guard	4	8	8	8	8	8	8	8	8	8	8	8	6	5
Total	35	42	43	43	41	42	41	33	32	32	30	25	21	20
Surface-to-Air Missile Battalions														
NIKE AJAX Battalions* - Guard	23	11	0	0	0	0	0	0	0	0	0	0	0	0
NIKE HERCULES Battalions*														
Active	59	55	48	44	37	37	38	31	23	17	18	17	17	10
Guard	2	7	14	18	18	18	18	17	14	9	9	9	9	0
Total	61	62	62	62	55	55	56	48	37	26	27	26	26	10
ROLAND Battalions*														
Active	0	0	0	0	1	1	1	1	1	1	1	0	0	0
Guard	0	0	0	0	0	0	0	0	0	0	0	0	0	0
Total	0	0	0	0	1	1	1	1	1	1	1	0	0	0
HAWK Battalions*														
Active	25	25	25	23	22	22	26	27	20	20	20	19	19	19
Guard	0	0	0	0	0	0	0	0	0	0	0	0	0	0
Total	25	25	25	23	22	22	26	27	20	20	20	19	19	19
PATRIOT Battalions*														
Active	0	0	0	0	0	0	0	0	0	0	0	0	0	0
Guard	0	0	0	0	0	0	0	0	0	0	0	0	0	0
Total	0	0	0	0	0	0	0	0	0	0	0	0	0	0
Total Surface-to-Air Missile Battalions														
Active	84	80	73	67	60	60	65	59	44	38	38	36	36	29
Guard	25	18	14	18	18	18	18	17	14	9	9	9	9	0
Total	109	98	87	85	78	78	83	76	58	47	47	45	45	29

Notes: *indicates battalion equivalents include in total.
Totals may not equal sum of component totals due to rounding.

Army Combat Battalions and Battalion Equivalents
FY1962 - FY2000

	FY76	FY77	FY78	FY79	FY80	FY81	FY82	FY83	FY84	FY85	FY86	FY87	FY88	FY89
Surface-to-Surface Missile Battalions														
CORPORAL Battalions - Active	0	0	0	0	0	0	0	0	0	0	0	0	0	0
LACROSSE Battalions - Active	0	0	0	0	0	0	0	0	0	0	0	0	0	0
REDSTONE Battalions - Active	0	0	0	0	0	0	0	0	0	0	0	0	0	0
SERGEANT Battalions - Active	1	0	0	0	0	0	0	0	0	0	0	0	0	0
HONEST JOHN Battalions														
Active	2	1	1	0	0	0	0	0	0	0	0	0	0	0
Guard	3	3	0	0	0	0	0	0	0	0	0	0	0	0
Total	5	4	1	0	0	0	0	0	0	0	0	0	0	0
LITTLE JOHN Battalions - Active	0	0	0	0	0	0	0	0	0	0	0	0	0	0
PERSHING Battalions - Active	4	4	4	4	4	4	4	4	4	4	4	4	4	3
LANCE Battalions - Active	8	8	8	8	8	8	8	8	8	8	8	8	8	8
Total Surface-to-Surface Missile Battalions	15	13	13	12	12	12	12	12	12	12	12	12	12	11
Active	3	3	0	0	0	0	0	0	0	0	0	0	0	11
Guard	18	16	13	12	12	12	12	12	12	12	12	12	12	11
Surface-to-Air Missile Battalions														
NIKE AJAX Battalions* - Guard	0	0	0	0	0	0	0	0	0	0	0	0	0	0
NIKE HERCULES Battalions*														
Active	10	8	8	8	7	7	4	2	1	0	0	0	0	0
Guard	0	0	0	0	0	0	0	0	0	0	0	0	0	0
Total	10	8	8	8	7	7	4	2	1	0	0	0	0	0
ROLAND Battalions*														
Active	0	0	0	0	0	0	0	0	0	0	0	0	0	0
Guard	0	0	0	0	0	0	0	0	0	1	1	1	1	0
Total	0	0	0	0	0	0	0	0	0	1	1	1	1	0
HAWK Battalions*														
Active	19	19	20	21	19	19	17	17	17	12	12	11	10	8
Guard	0	0	0	0	0	0	0	0	0	0	0	1	1	1
Total	19	19	20	21	19	19	17	17	17	12	12	12	11	9
PATRIOT Battalions*														
Active	0	0	0	0	0	0	0	0	1	3	4	6	8	10
Guard	0	0	0	0	0	0	0	0	0	0	0	0	0	0
Total	0	0	0	0	0	0	0	0	1	3	4	6	8	10
Total Surface-to-Air Missile Battalions	29	27	28	29	26	26	21	20	21	16	18	19	20	18
Active	0	0	0	0	0	0	0	0	0	1	1	2	2	1
Guard	29	27	28	29	26	26	21	20	21	17	19	21	22	19

Notes: *indicates battalion equivalents include in total.
Totals may not equal sum of component totals due to rounding.

Army Combat Battalions and Battalion Equivalents
FY1962 - FY2000

	FY90	FY91	FY92	FY93	FY94	FY95	FY96	FY97	FY98	FY99	FY00
Surface-to-Surface Missile Battalions											
CORPORAL Battalions - Active	0	0	0	0	0	0	0	0	0	0	0
LACROSSE Battalions - Active	0	0	0	0	0	0	0	0	0	0	0
REDSTONE Battalions - Active	0	0	0	0	0	0	0	0	0	0	0
SERGEANT Battalions - Active	0	0	0	0	0	0	0	0	0	0	0
HONEST JOHN Battalions											
Active	0	0	0	0	0	0	0	0	0	0	0
Guard	0	0	0	0	0	0	0	0	0	0	0
Total	0	0	0	0	0	0	0	0	0	0	0
LITTLE JOHN Battalions - Active	0	0	0	0	0	0	0	0	0	0	0
PERSHING Battalions - Active	2	0	0	0	0	0	0	0	0	0	0
LANCE Battalions - Active	7	7	4	4	0	0	0	0	0	0	0
Total Surface-to-Surface Missile Battalions											
Active	9	7	4	4	0	0	0	0	0	0	0
Guard	0	0	0	0	0	0	0	0	0	0	0
Total	9	7	4	4	0	0	0	0	0	0	0
Surface-to-Air Missile Battalions											
NIKE AJAX Battalions* - Guard	0	0	0	0	0	0	0	0	0	0	0
NIKE HERCULES Battalions*											
Active	0	0	0	0	0	0	0	0	0	0	0
Guard	0	0	0	0	0	0	0	0	0	0	0
Total	0	0	0	0	0	0	0	0	0	0	0
ROLAND Battalions*											
Active	0	0	0	0	0	0	0	0	0	0	0
Guard	0	0	0	0	0	0	0	0	0	0	0
Total	0	0	0	0	0	0	0	0	0	0	0
HAWK Battalions*											
Active	8	8	8	8	0	0	0	0	0	0	0
Guard	3	4	4	4	5	4	4	4	4	0	0
Total	11	12	12	12	5	4	4	4	4	0	0
PATRIOT Battalions*											
Active	10	10	10	10	9	9	9	9	10	10	8
Guard	0	0	0	0	0	0	1	1	1	2	0
Total	10	10	10	10	9	9	10	10	11	12	8
Total Surface-to-Air Missile Battalions											
Active	18	18	18	18	9	9	9	9	10	10	8
Guard	3	4	4	4	5	4	5	5	1	2	0
Total	21	22	22	22	14	13	14	14	11	12	8

Notes: *indicates battalion equivalents include in total.
Totals may not equal sum of component totals due to rounding.

Army Combat Battalions and Battalion Equivalents
FY1962 - FY2000

	FY62	FY63	FY64	FY65	FY66	FY67	FY68	FY69	FY70	FY71	FY72	FY73	FY74	FY75
Air Defense Battalions														
40m DUSTER Battalions*														
Active	0	0	0	0	4	4	2	2	2	2	0	0	0	0
Guard	28	24	26	26	27	28	14	14	8	8	8	8	8	8
Total	28	24	26	26	31	31	16	16	10	10	8	8	8	8
VULCAN/CHAPARRAL Battalions - Active	0	0	0	0	0	0	0	0	0	0	0	0	0	0
VULCAN/STINGER Battalions - Active	0	0	0	0	0	0	0	2	5	7	12	12	11	11
VULCAN/CHAPARRAL/STINGER Bns - Active	0	0	0	0	0	0	0	0	0	0	6	6	6	6
CHAPARRAL Battalions*														
Active	0	0	0	0	0	0	0	1	3	5	8	8	8	8
Guard	0	0	0	0	0	0	0	0	0	0	0	0	0	0
AVENGER/CHAPARRAL Battalions														
Active	0	0	0	0	0	0	0	0	0	0	0	0	0	0
Guard	0	0	0	0	0	0	0	0	0	0	0	0	0	0
MANPADS Battalions														
Active	0	0	0	0	0	0	0	0	0	0	0	0	0	0
Guard	0	0	0	0	0	0	0	0	0	0	0	0	0	0
Air Defense Battalions* - Active	0	0	0	0	0	0	0	0	0	0	0	0	0	0
ADA Battalions Heavy Division														
Active	0	0	0	0	0	0	0	0	0	0	0	0	0	0
Guard	0	0	0	0	0	0	0	0	0	0	0	0	0	0
ADA Battalions Light Division														
Active	0	0	0	0	0	0	0	0	0	0	0	0	0	0
Guard	0	0	0	0	0	0	0	0	0	0	0	0	0	0
Total Air Defense Battalions*														
Active	0	0	0	0	4	4	2	5	10	14	26	26	25	25
Guard	28	24	26	26	27	28	14	14	8	8	8	8	8	8
Total	28	24	26	26	31	32	16	19	18	22	34	34	33	33

Notes: *indicates battalion equivalents include in total.
Totals may not equal sum of component totals due to rounding.

Army Combat Battalions and Battalion Equivalents
FY1962 - FY2000

	FY76	FY77	FY78	FY79	FY80	FY81	FY82	FY83	FY84	FY85	FY86	FY87	FY88	FY89
Air Defense Battalions														
40m DUSTER Battalions*														
Active	0	0	0	0	0	0	0	0	0	0	0	0	0	0
Guard	8	8	8	8	8	8	8	8	8	8	6	6	3	0
Total	8	8	8	8	8	8	8	8	8	8	6	6	3	0
VULCAN/CHAPARRAL Battalions - Active	0	0	0	0	0	0	0	0	0	0	0	2	6	0
VULCAN/STINGER Battalions - Active	12	12	12	13	13	13	13	13	12	12	13	3	8	0
VULCAN/CHAPARRAL/STINGER Bns - Active	6	6	6	6	6	6	6	6	6	6	6	17	7	0
CHAPARRAL Battalions*														
Active	8	9	10	10	10	10	10	10	10	9	6	6	4	0
Guard	0	0	0	0	0	0	0	0	0	0	2	2	3	0
AVENGER/CHAPARRAL Battalions														
Active	0	0	0	0	0	0	0	0	0	0	0	0	0	3
Guard	0	0	0	0	0	0	0	0	0	0	0	0	0	8
MANPADS Battalions														
Active	0	0	0	0	0	0	0	0	0	0	0	0	0	0
Guard	0	0	0	0	0	0	0	0	0	0	0	0	0	3
Air Defense Battalions* - Active	0	0	0	0	0	0	0	0	0	0	0	0	0	4
ADA Battalions Heavy Division														
Active	0	0	0	0	0	0	0	0	0	0	0	0	0	12
Guard	0	0	0	0	0	0	0	0	0	0	0	0	0	0
ADA Battalions Light Division														
Active	0	0	0	0	0	0	0	0	0	0	0	0	0	5
Guard	0	0	0	0	0	0	0	0	0	0	0	0	0	1
Total Air Defense Battalions*														
Active	26	27	28	29	29	29	29	29	28	27	27	28	25	24
Guard	8	8	8	8	8	8	8	8	8	8	8	8	6	12
Total	34	35	36	37	37	37	37	37	36	35	35	36	31	36

Notes: *indicates battalion equivalents include in total.
Totals may not equal sum of component totals due to rounding.

Army Combat Battalions and Battalion Equivalents
FY1962 - FY2000

	FY90	FY91	FY92	FY93	FY94	FY95	FY96	FY97	FY98	FY99	FY00
Air Defense Battalions											
40m DUSTER Battalions*											
Active	0	0	0	0	0	0	0	0	0	0	0
Guard	0	0	0	0	0	0	0	0	0	0	0
Total	0	0	0	0	0	0	0	0	0	0	0
VULCAN/CHAPARRAL Battalions - Active	0	0	0	0	0	0	0	0	0	0	0
VULCAN/STINGER Battalions - Active	0	0	0	0	0	0	0	0	0	0	0
VULCAN/CHAPARRAL/STINGER Bns - Active	0	0	0	0	0	0	0	0	0	0	0
CHAPARRAL Battalions*											
Active	0	0	0	0	0	0	0	0	0	0	0
Guard	0	0	0	0	0	0	0	0	0	0	0
AVENGER/CHAPARRAL Battalions											
Active	3	3	4	4	3	3	3	3	1	0	0
Guard	8	8	8	8	8	8	8	8	8	9	11
MANPADS Battalions											
Active	0	0	0	0	0	0	0	0	0	0	0
Guard	3	3	3	3	0	0	0	0	0	0	0
Total	4	4	3	3	0	0	0	0	0	0	0
Air Defense Battalions* - Active											
ADA Battalions Heavy Division											
Active	12	10	10	8	8	8	6	6	6	6	6
Guard	0	0	0	0	6	7	7	7	7	7	7
ADA Battalions Light Division											
Active	5	5	5	5	4	4	4	4	4	4	2
Guard	1	2	2	2	2	1	1	1	1	1	1
Total Air Defense Battalions*											
Active	24	22	22	20	15	15	13	13	11	10	8
Guard	12	13	13	13	16	16	16	16	16	17	19
Total	36	35	35	33	31	31	29	29	27	27	27

Notes: *indicates battalion equivalents include in total.
Totals may not equal sum of component totals due to rounding.

Army Combat Battalions and Battalion Equivalents
FY1962 - FY2000

	FY62	FY63	FY64	FY65	FY66	FY67	FY68	FY69	FY70	FY71	FY72	FY73	FY74	FY75
Combat Aviation Battalions														
Attack Helicopter Battalions*														
Active	0	1	0	0	3	3	2	5	4	2	4	3	3	3
Guard	0	0	0	0	0	0	0	0	0	0	0	0	0	0
Reserve	0	0	0	0	0	0	1	1	1	1	0	0	0	0
Total	0	1	0	0	3	3	3	6	5	3	4	3	3	3
Special Operations Battalions														
Special Forces Battalions														
Active	0	0	0	0	0	0	0	0	0	0	0	0	0	0
Guard	0	0	0	0	0	0	0	0	0	0	0	0	0	0
Reserve	0	0	0	0	0	0	0	0	0	0	0	0	0	0
Total	0	0	0	0	0	0	0	0	0	0	0	0	0	0
Special Operations Aviation Battalions														
Active	0	0	0	0	0	0	0	0	0	0	0	0	0	0
Guard	0	0	0	0	0	0	0	0	0	0	0	0	0	0
Total Special Operations Battalions														
Active	0	0	0	0	0	0	0	0	0	0	0	0	0	0
Guard	0	0	0	0	0	0	0	0	0	0	0	0	0	0
Reserve	0	0	0	0	0	0	0	0	0	0	0	0	0	0
Total	0	0	0	0	0	0	0	0	0	0	0	0	0	0
TOTAL COMBAT BATTALIONS														
Active	359	391	404	400	407	415	424	421	388	326	329	320	322	329
Guard	224	249	287	291	304	305	312	311	312	309	307	305	302	296
Reserve	15	36	47	47	47	55	28	28	28	30	30	32	32	32
Total	599	677	737	737	758	775	764	760	728	665	666	657	656	656

Notes: *Indicates battalion equivalents include in total.
Totals may not equal sum of component totals due to rounding.

Army Combat Battalions and Battalion Equivalents
FY1962 - FY2000

	FY76	FY77	FY78	FY79	FY80	FY81	FY82	FY83	FY84	FY85	FY86	FY87	FY88	FY89
Combat Aviation Battalions														
Attack Helicopter Battalions*														
Active	3	3	3	5	4	4	4	5	4	4	12	23	36	31
Guard	1	1	1	1	1	1	1	4	4	3	11	21	21	19
Reserve	0	0	0	0	0	0	0	0	0	0	0	0	0	3
Total	4	4	4	6	5	5	5	9	8	15	34	57	59	53
Special Operations Battalions														
Special Forces Battalions														
Active	0	0	0	0	0	0	0	0	0	0	0	0	12	12
Guard	0	0	0	0	0	0	0	0	0	0	0	0	6	6
Reserve	0	0	0	0	0	0	0	0	0	0	0	0	6	6
Total	0	0	0	0	0	0	0	0	0	0	0	24	24	24
Special Operations Aviation Battalions														
Active	0	0	0	0	0	0	0	0	0	0	0	2	1	1
Guard	0	0	0	0	0	0	0	0	0	0	0	0	0	1
Total Special Operations Battalions	0	0	0	0	0	0	0	0	0	0	0	14	13	13
Active	0	0	0	0	0	0	0	0	0	0	0	6	7	7
Guard	0	0	0	0	0	0	0	0	0	0	0	6	6	6
Reserve	0	0	0	0	0	0	0	0	0	0	0	0	0	0
Total	0	0	0	0	0	0	0	0	0	0	0	26	26	26
TOTAL COMBAT BATTALIONS														
Active	350	356	358	357	354	354	351	348	331	336	357	402	399	380
Guard	294	295	293	293	289	291	291	291	296	293	304	325	333	349
Reserve	30	30	30	30	30	30	30	30	30	30	30	30	37	39
Total	674	682	680	680	673	675	672	668	657	660	691	763	769	768

Notes: *Indicates battalion equivalents include in total.
Totals may not equal sum of component totals due to rounding.

Army Combat Battalions and Battalion Equivalents
FY1962 - FY2000

FY90 FY91 FY92 FY93 FY94 FY95 FY96 FY97 FY98 FY99 FY00

Combat Aviation Battalions

Attack Helicopter Battalions*

Active	33	34	35	30	26	21	19	18	18	18	18
Guard	20	21	19	18	17	12	13	13	13	14	13
Reserve	4	4	4	4	3	3	2	2	2	2	2
Total	57	59	58	52	46	36	34	33	33	32	33

Special Operations Battalions

Special Forces Battalions

Active	13	15	14	15	15	15	15	15	15	15	15
Guard	6	6	6	6	6	6	6	6	6	6	6
Reserve	6	6	6	6	3	3	0	0	0	0	0
Total	25	27	26	26	24	24	21	21	21	21	21

Special Operations Aviation Battalions

Active	1	1	4	4	4	4	4	4	4	4	8
Guard	1	1	1	1	0	0	0	0	0	0	0

Total Special Operations Battalions

Active	14	16	18	19	19	19	19	19	19	19	23
Guard	7	7	7	6	5	6	6	6	6	6	6
Reserve	6	6	6	6	3	3	0	0	0	0	0
Total	27	29	31	31	27	28	25	25	25	25	29

TOTAL COMBAT BATTALIONS

Active	366	334	318	311	256	241	229	228	226	219	227
Guard	346	337	299	277	277	275	262	261	260	269	261
Reserve	40	37	35	35	25	12	3	3	3	3	3
Total	752	708	652	623	558	528	494	492	489	491	491

Notes: *Indicates battalion equivalents include in total.
Totals may not equal sum of component totals due to rounding.

REPORT DOCUMENTATION PAGE*Form Approved
OMB No. 0704-0188*

Public reporting burden for this collection of information is estimated to average 1 hour per response, including the time for reviewing instructions, searching existing data sources, gathering and maintaining the data needed, and completing and reviewing the collection of information. Send comments regarding this burden estimate or any other aspect of this collection of information, including suggestions for reducing this burden, to Washington Headquarters Services, Directorate for Information Operations and Reports, 1215 Jefferson Davis Highway, Suite 1204, Arlington, VA 22202-4302, and to the Office of Management and Budget, Paperwork Reduction Project (0704-0188), Washington, DC 20503.

1. AGENCY USE ONLY (Leave blank)		2. REPORT DATE January 2001	3. REPORT TYPE AND DATES COVERED Final	
4. TITLE AND SUBTITLE <i>Army Combat Potential FY1962-FY2000</i>			5. FUNDING NUMBERS DASW01 98 C 0067 BA-6-1866	
6. AUTHOR(S) John R. Brinkerhoff		7. PERFORMING ORGANIZATION NAME(S) AND ADDRESS(ES) Institute for Defense Analyses 1801 N. Beauregard Street Alexandria, VA 22311		
8. PERFORMING ORGANIZATION REPORT NUMBER IDA Document D-2498			9. SPONSORING/MONITORING AGENCY NAME(S) AND ADDRESS(ES) Office of the Director, Program Analysis and Evaluation The Pentagon Washington, DC 20301	
10. SPONSORING/MONITORING AGENCY REPORT NUMBER		11. SUPPLEMENTARY NOTES		
12a. DISTRIBUTION/AVAILABILITY STATEMENT Approved for public release; distribution unlimited.			12b. DISTRIBUTION CODE	
13. ABSTRACT (Maximum 200 words) This paper presents Army combat battalions from end FY1962 to end FY2000 as recorded in the Forces File of the Future Years Defense Program (FYDP). The aggregate number of combat battalions is used to represent the combat potential of the Army, and that measure is compared with total Army military and civilian personnel strength to provide a measure of the Army's efficiency. The results of this analysis indicate that the Army has become more efficient in producing and supporting combat battalions over the 39-year period of investigation.				
14. SUBJECT TERMS Army, combat battalions, combat potential, combat power, force structure, Institutional Army, TOE Army			15. NUMBER OF PAGES 48	
16. PRICE CODE			17. SECURITY CLASSIFICATION OF REPORT UNCLASSIFIED	
18. SECURITY CLASSIFICATION OF THIS PAGE UNCLASSIFIED		19. SECURITY CLASSIFICATION OF ABSTRACT UNCLASSIFIED		20. LIMITATION OF ABSTRACT UL