

EN  
[REDACTED]

Reproduced From  
Best Available Copy

UNCLASSIFIED

CLOTHING ALMANAC NO. 8

[REDACTED]

[REDACTED]

NORTHWEST AFRICA

DISTRIBUTION STATEMENT A  
Approved for Public Release  
Distribution Unlimited

20010719 073

Army—C&GSC—P0

Research and Development Branch  
Military Planning Division  
Office of The Quartermaster General  
October 1950

MIR  
[REDACTED]

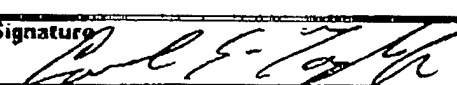
[REDACTED]

UNCLASSIFIED

JUN-06-2001 09:01

DTIC-DC

703 767 9244 P.06/06

DEFENSE TECHNICAL INFORMATION CENTER REQUEST FOR SCIENTIFIC AND TECHNICAL REPORTS		
Title  		
<b>1. Report Availability (Please check one box)</b> <input checked="" type="checkbox"/> This report is available. Complete sections 2a - 2f. <input type="checkbox"/> This report is not available. Complete section 3.	<b>2a. Number of Copies Forwarded</b>  	<b>2b. Forwarding Date</b>  28 Jun 01
<b>2c. Distribution Statement (Please check ONE box)</b> DoD Directive 5230.24, "Distribution Statements on Technical Documents," 18 Mar 87, contains seven distribution statements, as described briefly below. Technical documents MUST be assigned a distribution statement.		
<input checked="" type="checkbox"/> DISTRIBUTION STATEMENT A: Approved for public release. Distribution is unlimited. <input type="checkbox"/> DISTRIBUTION STATEMENT B: Distribution authorized to U.S. Government Agencies only. <input type="checkbox"/> DISTRIBUTION STATEMENT C: Distribution authorized to U.S. Government Agencies and their contractors. <input type="checkbox"/> DISTRIBUTION STATEMENT D: Distribution authorized to U.S. Department of Defense (DoD) and U.S. DoD contractors only. <input type="checkbox"/> DISTRIBUTION STATEMENT E: Distribution authorized to U.S. Department of Defense (DoD) components only. <input type="checkbox"/> DISTRIBUTION STATEMENT F: Further dissemination only as directed by the controlling DoD office indicated below or by higher authority. <input type="checkbox"/> DISTRIBUTION STATEMENT X: Distribution authorized to U.S. Government agencies and private individuals or enterprises eligible to obtain export-controlled technical data in accordance with DoD Directive 5230.25, Withholding of Unclassified Technical Data from Public Disclosure, 6 Nov 84.		
<b>2d. Reason For the Above Distribution Statement (in accordance with DoD Directive 5230.24)</b> <i>Originators deemed the information unclassified and suitable for public release</i>		
<b>2e. Controlling Office</b>  AMSCB-OSA(N)	<b>2f. Date of Distribution Statement Determination</b>  28 Jun 01	
<b>3. This report is NOT forwarded for the following reasons. (Please check appropriate box)</b>		
<input type="checkbox"/> It was previously forwarded to DTIC on _____ (date) and the AD number is _____ <input type="checkbox"/> It will be published at a later date. Enter approximate date if known. _____ <input type="checkbox"/> In accordance with the provisions of DoD Directive 3200.12, the requested document is not supplied because: _____ _____ _____		
<b>Print or Type Name</b> Carl E. Taylor, Jr.	<b>Signature</b> 	
<b>Telephone</b> 508-233-4527	(For DTIC Use Only) <b>AQ Number</b>	

~~UNCLASSIFIED~~  
~~RESTRICTED~~

Department of the Army  
OFFICE OF THE QUARTERMASTER GENERAL  
Military Planning Division  
Research and Development Branch

Environmental Protection Section

Clothing, Almanac No. 8

NORTHWEST AFRICA

Washington, D. C.

October 1950

"This document contains information affecting the National Defense of the United States within the meaning of the Espionage Act, 50 U. S. C., 31 and 32, as amended. Its transmission or the revelation of its contents in any manner to an unauthorized person is prohibited by law."

~~UNCLASSIFIED~~

~~RESTRICTED~~

## INTRODUCTION

1. PURPOSE. Clothing Almanacs show monthly requirements for items of military clothing to be used in a particular region by troops operating under combat conditions. They are intended to aid logistic planners; from them it is possible to determine monthly clothing needs, probable amounts of use and wear of the items, and requirements for item replacement.

a. Distribution. The Almanacs are distributed for guidance to theater, Army, and other commanders responsible for authorizing the issue of discretionary items, and for information to commanders of posts, camps, stations, and divisions or equivalent organizations.

2. DESCRIPTION. Clothing Almanacs supplement T/A 21, which specifies total yearly clothing allowances for each of seven world-wide zones. Each T/A 21 Clothing Allowance Zone is based on the average temperatures of the coldest and warmest months, as shown in Table I.

---

TABLE 1: CLOTHING ALLOWANCE ZONES OF T/A 21

Zone	Average Temperature (°F) of	
	Coldest Month	Warmest Month
I Tropical . . . . .	Above 68 . . .	Above 68
II Semitropical . . . . .	50 to 68 . . .	Above 68
III Warm Temperate . . . . .	32 to 50 . . .	Above 68
IV Mild Temperate . . . . .	32 to 50 . . .	50 to 68
V Cool Temperate . . . . .	Below 32 . . .	Above 68
VI Cold Temperate . . . . .	14 to 32 . . .	50 to 68
VII Arctic . . . . .	Below 14 . . .	Below 68

---

For each zone, T/A 21 lists the items that are required or mandatory. It also lists for each zone the items that are discretionary. (Discretionary items are not required by all personnel within the respective zones, but they are essential to the operating efficiency of certain personnel whose duty assignments may involve greater exposure to environmental conditions.) Within the framework of T/A 21, Clothing Almanacs show monthly clothing requirements in specific regions, indicating essential items in these regions.

a. Basis. Clothing Almanacs are based on a detailed study of local environmental conditions. Each Almanac specifies the clothing most likely to be needed by troops for adequate protection against these conditions during round-the-clock operations. Of primary concern in preparing an Almanac is the amount and kind of clothing a soldier needs while he is in the field engaged in relatively light activity. Troops engaged in strenuous activity need less clothing; troops completely at rest require more to remain comfortable. Clothing Almanacs show the items that will give troops

adequate protection for at least 90 percent of the time, and in an average year any particular item can be expected to be used at least 30 percent of the time during the months specified.

b. Regions. Clothing Almanacs are issued for particular regions (e.g., Alaska, Japan, Northeast Africa, etc.) which include parts of two or more T/A 21 Clothing Allowance Zones. Each Clothing Almanac Region is further subdivided into a number of Clothing Requirement Areas, according to differences in monthly clothing requirements. Although all Clothing Requirement Areas within any one of the T/A 21 Clothing Allowance Zones have the same basic annual clothing allowances, they differ in monthly clothing needs.

(1) Clothing Requirement Areas are of two types, non-mountainous and mountainous. The latter are given a special designation to indicate that field conditions and, consequently, clothing requirements may change rapidly within a relatively short horizontal distance. The mountainous areas are divided into elevation intervals, each of which has different clothing needs. Thus, in effect, each interval represents a Clothing Requirement Area and clothing needs of troops operating within mountains can be determined for any elevation.

(2) Each Clothing Requirement Area is assigned an identifying symbol. Non-mountainous areas are designated by Roman numerals of the Clothing Zones in which they occur, together with an identifying letter (e.g., VI-A). Mountainous areas are designated by the Roman numerals of the Clothing Allowance Zones of their lowest elevations, together with an identifying number (e.g., VI-2). Although Clothing Requirement Areas in different Clothing Almanacs may have identical designations, they do not necessarily have the same environmental conditions or monthly clothing requirements. For example, monthly clothing requirements in Alaska VII-C are not the same as those in Greenland VII-C.

c. Map. A map of the Region showing its Clothing Requirement Areas is included in the back of the Almanac. Distinctive boundaries separate Clothing Allowance Zones; single line boundaries separate the individual Clothing Requirement Areas. Each area is numbered according to the system outlined above.

d. Tables. For each Clothing Requirement Area or mountain elevation interval there is a table in the Clothing Almanac. Months are shown along the top, and the clothing items are listed on the left side of the page. Need for an item is shown by a solid bar drawn opposite the item and in the proper month-column. The absence of such a bar means that the item is not needed in that month. For each mountain interval, elevations in feet above sea level are given at the top of the page.

e. Items Listed. All items listed in the clothing tables are authorized in T/A 21, Mobilization, 26 January 1950, for the respective zones. In the tables, these items have been grouped and arranged alphabetically under the headings of Body Clothing, Footgear, Handgear, Headgear, and Sleeping Equipment. For many items, model numbers, shade numbers, etc., have been eliminated to conserve space.

(1) Both discretionary and mandatory items are included in the tables. Discretionary items are indicated by an asterisk (\*).

(2) Clothing Almanacs do not specify the requirements for specialized equipment. Issue of Specialized Individual Equipment for low mountain and alpine areas, as listed in T/A 21, Part III, Section II, may be authorized by the commanding general, theater of operations, or by the Department of the Army for individuals undergoing special training in continental United States. Boots, ski-mountain are considered specialized in that they are to be worn primarily by trained ski troops or specially equipped mountain troops. When worn with the proper sockgear, these boots are satisfactory for use with skis at temperatures as low as -22°F; they are not suitable for use with snowshoes. For climbing steep rocky slopes, they may be preferred at moderate to high temperatures over the Boot, service, combat, russet, and at lower temperatures over Shoepacs; the latter, however, are generally preferred for climbing wet or snow covered slopes.

(3) Certain items which are mandatory throughout the world, such as Drawers, cotton and Belt, waist are not included in the tables.

(4) Also excluded are items in the nature of equipment rather than clothing: insignia, toilet articles, knives, snowshoes, tents, steel helmets, etc.

(5) Under the heading "Anti-Insect" need is indicated for: Gloves, mosquito; Headnet, mosquito; Bar, insect, field; and Repellent, insect.



Fig. 1. Typical sand dune topography, interrupted by low hills with exposed bedrock, in the Sahara ( $27^{\circ} 30' N$ ,  $7^{\circ} E$ , Area II-C). Clothing here must provide protection against blowing sand and intense sunshine.



Fig 2. Salt marshes, such as this one south of Constantine, Algeria (Area II-D), are found also in Areas II-B, II-C, and II-E. They indicate need for Boots, knee wader for wear over Boots, service, combat. This photograph (courtesy National Geographic Society) shows conditions in spring; in summer a dry crust forms, but men and vehicles break through into mud.

~~UNCLASSIFIED~~

## CLOTHING ALMANAC FOR NORTHWEST AFRICA

1. GENERAL. The Clothing Almanac for Northwest Africa lists the month-by-month clothing needs for troops operating in Tunisia, Algeria, French Morocco, Spanish Morocco, Tangier Zone, Ifni, Spanish Western Sahara, French West Africa, Gambia, Portuguese Guinea, Sierra Leone, Liberia, Gold Coast, Togo, Nigeria, Cameroons and the Madeira, Canary, Fernando Poo and Cape Verde Islands (see attached map). This Almanac Region is slightly larger than the United States. Although all of it is "hot", it contains such a wide range of environmental conditions that a single clothing assembly would not provide adequate protection for all troops throughout the year for the entire region.

Desert occupies nearly two-thirds of this region. The remaining third includes seasonally dry thorn bush and grass land, belt of tropical rain forest along the southern coast, and mountain ranges in the northern, eastern, and southern parts. The islands to the west, though mountainous, have less severe ranges of climatic conditions than inland places of the same elevations.

2. CLOTHING REQUIREMENT AREAS AND TABLES. The Northwest Africa Clothing Almanac Region is included entirely within Zones I and II of the seven world-wide Clothing Allowance Zones described in T/A 21 (see page i). Zone I is south of 15° N latitude in this Almanac Region; Zone II is north of this latitude. Owing to differences in geographic and climatic conditions within this region, it has been divided into 15 areas, each with essentially homogeneous clothing requirements. These Clothing Requirement Areas are shown on the attached map and the clothing needs of each area are indicated in the respective Clothing Requirement Table.

Environmental conditions within one area may vary, from place to place and from year to year, so that two or more items sometimes have been indicated on the Clothing Requirement Tables as required for the same general purpose: for example, Boots, service, combat and Boots, combat, tropical. In addition, items may be intended for use in different military occupations. The following paragraphs are intended to provide information to aid in judicious selection of such items from the Clothing Requirement Tables.

The Clothing Requirement Tables for the seven mountain areas in Northwest Africa indicate approximate variations of requirements according to elevation intervals. Additional specialized items may be required in some of these intervals. Sudden changes in short distances, the great altitudinal variation of temperature, wind speed, and amount of precipitation, and the steepness and ruggedness of slopes, must be considered when recommending clothing for these areas. The Zone I or II conditions of the lower levels of Northwest African mountains change to those of

~~UNCLASSIFIED~~  
UNCLASSIFIED

Zones III or IV in the upper levels. Clothing found to be satisfactory on the leeward side of a peak at a high elevation may not be adequate on the windward side of the same peak at the same elevation. Improperly clothed troops may become casualties because of sudden changes of temperature in these areas.

### 3. SURFACE CONDITIONS.

a. Desert. The Sahara Desert (Clothing Requirement Areas II-B, II-C and II-F), extending west to east across the entire region and from the Atlas Mountains in the north to approximately 17° N in the south, occupies more than one-half of this Almanac Region. From May to September the heat and aridity characteristic of the Sahara reach as far north as the Mediterranean Coast and from September to March as far south as Accra on the Gulf of Guinea Coast.

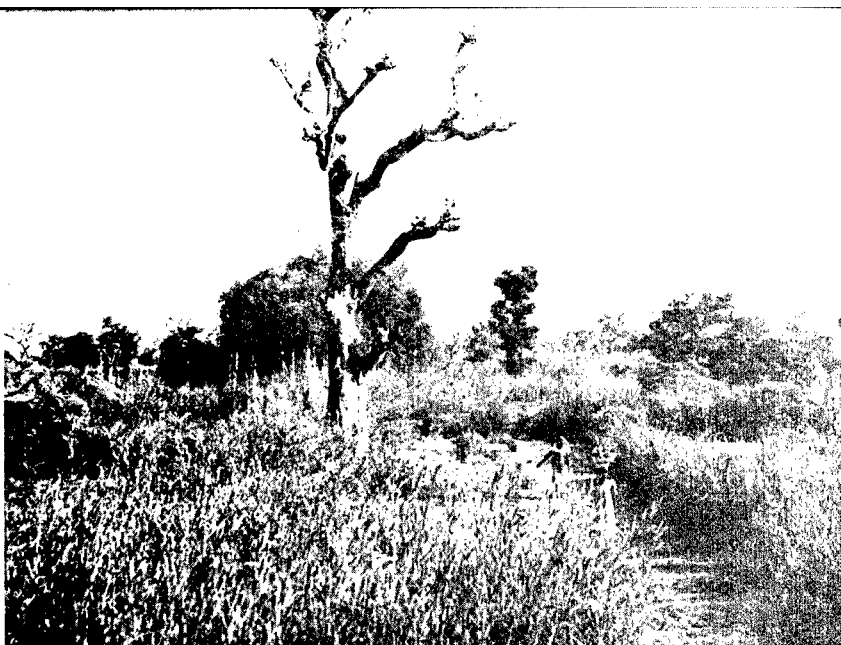
A vast territory of diversified landforms, the Sahara is less than one-half sand dune topography; most of it is pebble-covered and rocky with great stretches of thin sand deposits not in dunes (Fig. 1). Glasses, sun are required as protection against sun glare reflected from the ground. Furthermore, these surfaces become so hot during the day that protection is required for all parts of the body coming in contact with them. The most suitable footgear for use in the desert is Boots, service, combat. In addition, Glove-shells, leather are recommended for anticontact purposes, and for handling objects, especially metal ones, which have been lying in the sun.

Wells, springs, salt marshes, and irrigation ditches occur in most parts of the desert, and throughout the semidesert parts of the region (Fig. 2). Because of the high alkalinity and salinity of the water, the land surrounding these features is usually crusted with alkaline and salt crystals. For troops operating in or around salt marshes, or in irrigated sections of the cases, Boots, knee wader are suggested for wear over Boots, service, combat. The rotting effect of the high alkalinity and salinity on clothing and equipment necessitates frequent replacement in desert areas.

In general, clothing for the desert should be lightweight and light in color, and should cover as much of the body as possible from the burning effect of the sun. An additional outer layer has been included in the Clothing Tables because of the extreme variability of conditions.

b. Steppe. Bordering the desert on the south is a wide semiarid grass land with large clumps of thorn trees and stretches of stabilized sand dunes (Fig. 3). This type of land, elsewhere called "steppe", in Africa is called the Sudan (Areas I-B and II-A). The northern margins of this seasonally wet and dry grass land, varying in elevation from 500 to 3,000 feet, approximate the southern limit of moving sand dunes. Within the Sudan the dunes are grass-covered and are, therefore, fixed.

Fig. 3. In the Sudan (Area I-B), scattered trees and tall grass provide some shade and cover for troops. After the summer rains end, much of the grass dries and is burned off by the natives. (I.F.A.N. photo by G. Labitte)



During the wet season grasses in the Sudan grow several feet in height, but dry out soon after the rains end and are frequently burned off by the natives. Most of the grasses are prickly or burr-bearing and together with the thorn trees cause accelerated wear and tear on body clothing and footgear. Extensive military operations would destroy the anchored grass cover on the fixed sand hills and cause ground conditions similar to those in the desert. Overgrazing has already caused such conditions near wells and villages. Troops stationed in or near these places of blowing sand and grit require the same items of clothing and equipment normally used in the desert.

Although the northern periphery of the Sudan is characterized by low bushes, scattered trees are common in the higher elevations and along the watercourses. Forests increase in extent in the southern part. In some sections, trees are too scattered and too ravaged by fire and animals to furnish appreciable shade or cover for troops.

On the northern side of the Sahara the high plateau (Area II-D) between the Middle Atlas and the Saharan Atlas is a grass land with large salt marshes, called "shotts", scattered throughout its length. Large wheat fields are located on the higher sections and bushes line the canyons at the upper edge of the plateau.

The Mediterranean coastal area (II-E) is deeply dissected by short, swift streams. The narrow beaches are backed by the foothills of the Atlas; in many places the cliffs rise directly from the sea. This coastal area is only slightly less arid than the high plateau. There are groves of trees along the higher slopes in this area, but the lower slopes are seasonally dry and the scattered orchards require irrigation.

c. Tropical rain forests. Area I-A contains the only large stands of tropical rain forest in this Almanac Region. It extends eastward from



Fig. 4. In the tropical rain forest, such as this view in Liberia (Area I-A), body clothing should be loose-fitting and lightweight, and footgear should be vapor-permeable and easily dried. (Photo by U. S. Economic Mission to Liberia)

Sierra Leone to the Gold Coast, and from southern Nigeria into the Cameroons (Fig. 4). Smaller stands of tropical rain forest line some of the rivers flowing southward into the Gulf of Guinea and westward into the Atlantic Ocean as far north as Portuguese Guinea.

Openings appear in the forest where natives have cleared away trees to make room for their cultivated crops or to market the timber. For the most part, however, the forest is a continuous belt of tall, slender trees with dense canopies. Since it is always hot and moist in the tropical rain forests, the trees do not have a regular season for shedding their

leaves, as in temperate lands. Beneath the canopies, therefore, the forest is always shaded, the ground wet, and huge vines or lianas of various thicknesses hang and twine in a network of cables and ropes. In places, especially near rivers and coastal lagoons, the land is swampy. Progress through such forests is possible only with a machete and a strong arm.

Troops operating in these forests require easily dried footgear and waterproof covering for sleeping equipment. Because the forests tend to restrict the movement of air, and because of the high temperatures, frequent rain, and high relative humidities, the climate of these forests is enervating and disagreeable. Body clothing, therefore, should be loose-fitting and lightweight.

d. Mountains. The mountains in and around the desert (the Ahaggar, Area II-1; the Air, Area II-3; and the southern slopes of the Saharan Atlas, Area II-2) are steep, rocky, sparsely covered with vegetation, and deeply cut by flash floods from infrequent but torrential thunderstorms. Low thorn bushes, burr-bearing grasses, and stunted olive and acacia trees grow only in the more favorable locations. Many of the peaks are inactive volcanic cones flanked by lava flows and deep deposits of cinders and pumice dust. At least four of the peaks in the Ahaggar Mountains exceed 9,000 feet in elevation.

The northern slopes of the Atlas Mountains (Area II-2) are well wooded up to 10,000 feet in elevation and contain many alpine meadows which are snow covered during the winter months. The highest peak in this area (Tizi-n-Tamjurt) is 13,665 feet in elevation, and there are six peaks above 10,000 feet in elevation; all are in the Moroccan portion of the Atlas range. In Algeria and Tunisia the elevations are much lower, the highest peaks being below 8,000 feet (Fig. 5).

Clothing Requirement Area II-4 includes the Islas Canarias (Canary Islands), Ilhas Salvages (Salvage Islands), and Madeira. For the most part, these volcanic islands are climatically similar. Tenerife, on Madeira, the highest peak in these islands, rises to 12,162 feet in elevation and is snow-capped from 6 to 8 months per year. In January all of the peaks are snow-covered above the 5,000 foot elevation. Generally, the eastern sides of the islands are more arid than the western sides. The Mediterranean climate of the islands permits the growth of olive and citrus trees and several types of palms. Cacti and prickly grasses are common on the lower mountain slopes.

Dense rain forests are characteristic of the slopes of the Cameroons Mountains (Area I-1) and the Fouta Djallon (Area I-2) and Bauchi (Area I-3) plateaus. The peak of Mount Cameroons reaches 13,354 feet in elevation. Although it is not snow-covered, its upper levels have cold-wet climatic conditions throughout the year, requiring the use of woolen clothing.



Fig. 5. In the Atlas Mountains of Northern Algeria (Area II-2), conditions change with elevation from hot desert at the southern foot to cold on the upper slopes of the peaks, which are 7,000 to 8,000 feet in elevation. In this late spring photograph (courtesy National Geographic Society) the snow has almost disappeared from the peaks.

Because of similar clothing requirements, the semiarid Arquipelago de Cabo Verde (Cape Verde Islands) is included with the Bauchi Plateau in Area I-3.

#### 4. CLIMATE.

a. Temperature. High temperatures are common throughout the year in nearly all parts of the Northwest Africa Region, except the mountains. The highest temperatures are experienced in the desert, where daytime temperatures may be expected to reach 100°F from March through October. Readings as high as 133°F have been recorded. Along the Spanish Western Sahara coast (Area II-F) temperatures are modified by the sea breeze, and in the High Plateau (Area II-D) by elevation. Although temperatures frequently rise above 100°F along the north coast of Algeria and Morocco (Area II-E) from May to October, the highest ever recorded in most of this area is 118°F. Near Casablanca, however, the temperature reached 128°F during a hot southerly wind. These maximum temperatures are very similar to those of the deserts of Southern California, and the monthly averages along the north coast of Africa are similar to those of Florida, which, however, receives more rain.

In the desert during summer, the heat of the air is increased by radiation from the sand and rock surfaces of the ground, which may have temperatures as high as 180°F. In summer the ground continues to radiate a discomforting heat for several hours after sunset, especially in low-lying places. On plateaus and at higher elevations, faster ground-radiation and chilly nights may be expected. During summer nights in the desert and in the highlands, troops require blankets as protection against stones and uneven ground, the reradiation from the ground, and the relatively chill air just prior to sunrise. Head cover is required for troops as protection against intense solar radiation. Tent flies or awnings help to prevent sunstroke and heatstroke; the only areas with abundant natural shade are in the tropical rain forests (Area I-A).

In the southern part of this Almanac Region, the highest temperatures (93° to 95°F) are lower than those in the desert. Furthermore, the average range of temperature from night to afternoon is less than 10°F on the coasts and in the tropical rain forests, compared to over 25°F in the desert. For example, south of Freetown, Sierra Leone, the average range of temperature from night to day is greater than the range between mean monthly averages of the coldest and warmest months. Month-by-month temperatures are relatively uniform. Jacket and Trousers, lightweight special are suitable in this area throughout the year.

Except for the mountain areas, the average temperatures of the coldest months for the entire region are above 50°F. Although temperatures as low as -11°F have been recorded in the Atlas Mountains (Area II-1), the extreme low readings in other mountain areas in Northwest Africa are less severe. The extreme minimum in non-mountainous areas is 26°F; and in the desert, water in wells or pools may freeze nearly everywhere at night from November through February.

Winter daytime temperatures in inland sections (Areas II-B and II-C) frequently exceed 80°F. Clothing for these areas must be lightweight for high daytime temperatures, and must be supplemented with an additional jacket or sweater after sunset.

b. Precipitation. The amount and distribution of rainfall varies considerably from south to north in this region. Year-round rainfall may be expected in the tropical rain forest (Area I-A). Summer rains and dry winters are the rule in the Sudan (Areas I-B and II-A). Infrequent and scattered rains may occur in the desert (Areas II-B, II-C, and II-F). Winter rains and dry summers are characteristic in the north (Areas II-D and II-E). Therefore, the Poncho, lightweight, od is required in nearly all of this region at some time during the year.

The highest annual average precipitation, generally between 160 and 175 inches, is recorded along the Gulf of Guinea coasts. Some localities receive over twice as much; for example, Debunja, on the coast near the Nigeria-Cameroons border, receives 390 inches. On the other hand, Accra, Gold Coast (Area I-B), with an annual average of only 28 inches, is clearly an exception. Generally, around the Gulf of Guinea there is a double maximum of rainfall; December and January are the driest months, with only slight intermittent rains.

Toward the north, the dry season is longer, the rainy season has a single maximum in summer, and the amount of precipitation is less. In the central Sudan, at Zinder (Area I-B), and on the Atlantic coast, at St. Louis (Area II-A), the rainy season lasts from May to September with an annual average of approximately 19 inches. In general, the rains of the Sudan come in separate storms, and are localized. One sector may have several rains in succession while an adjacent sector may experience drought.

In the desert (Areas II-B and II-C) the average annual precipitation is in places less than one inch, although five inches or more have fallen in a few hours during a thunderstorm. Flash floods may occur in any of the dry stream beds because of rapid run-off from intense storms, perhaps some distance away. In many cases the heat of the desert air causes complete evaporation of precipitation before it reaches the ground. In the plateau (Area II-D) and mountains (Areas II-1, II-2, and II-3), the average annual precipitation varies from 8 to 20 inches.

North of the desert the amount of precipitation and the length of the rainy season increase (Area II-E). Here the rainy season begins in October and lasts until March, with November, December, and January the rainiest months. This precipitation is largely in the form of drizzle. In the summer an average of less than one inch of rain falls per month in most of the area.

Although abundant snow falls every winter in the upper slopes of the Atlas Mountains (Area II-2), it is light on the lower slopes of these ranges, and rarely appears at all in the desert. Snow falls intermittently on the North African coast, but it usually melts as it falls, or soon after it reaches the ground. Above the 5,000 foot elevation, snow may be expected any time from October to March.

c. Winds. Winds and their effects vary considerably in the different sections of this Almanac Region. The oppressive heat and humidity of the tropical rain forests are greatly mollified by the harmattan, an easterly or northeasterly wind from the desert. It is most prevalent in the Sudan during the dry season (September to May), but it is known even on the Guinea Coast. Dryness is the most prominent feature. The leaves on the trees turn yellow and fall, and wood splits. To humans, the feeling of dryness is intensified by the presence of dust and smoke in the air, but even this is a relief from the steamy heat of the forests. The dustiness is greatest just prior to the rainy season.

Winds in the Sahara are cold in winter, especially at night, requiring additional outer clothing, such as Jacket, field, M-1943 or Sweater, high neck; in summer they are hot blasts. In all seasons these winds are dry and laden with dust and grit. Glasses, sun provide partial protection against these wind-carried irritants. Great gusts of hot air and dense, whirling sand storms usually precede rain in the desert. Calms are often experienced in the Sahara, resulting in stagnation of hot air.

Hot winds from the desert, called siroccos, are the usual cause of excessively high temperatures along the coasts of North Africa. In their wide sweep over the Sahara, the siroccos pick up large quantities of dust, which with their abnormal heat distinguish them from other southerly winds. The sirocco is particularly devastating if long continued in summer, because of its intense evaporating power. Enormous quantities of water are required to support human life adequately during its continuance.

In mountain areas normally the winds are cold. The Jacket, wool, field, od and the Jacket, field, M-1943 are required to protect troops against wind chill in the high elevations of Northwest Africa mountains.

5. CLOTHING SUMMARY. Clothing requirements for Northwest Africa, itemized in detail in the Clothing Requirement Tables, can be summarized in three groups (Table 2): clothing required for warm and hot weather, cool weather, and cold weather. Not all items of each group are required in a specific area, but selections from the groups will provide suitable protection under average conditions of the applicable season. The Clothing Requirement Tables at the end of this Almanac show the detailed requirements for individual items.

TABLE 2: CLOTHING FOR NORTHWEST AFRICA

Warm and Hot Weather

Jacket & Trousers, lightweight special  
Shirt & Trousers, cotton, khaki  
Shirt, knit, od  
Boots, combat, tropical; w/1 pr. socks, wool, cushion sole;  
1 pr. insoles, ventilating  
Boots, service, combat, russet; w/1 pr. socks, wool, cushion sole  
Cap, herringbone twill  
Blanket, lightweight  
Blanket, wool, od  
Poncho, lightweight, od  
Anti-insect items

Cool Weather

Undershirt & Drawers, winter  
Jacket, field, w/hood, jacket & overcoat  
Shirt, flannel, od, & Trousers, field, wool, od  
Trousers, field, cotton, od  
Boots, service, combat, russet; w/1 pr. socks, wool, cushion sole  
Cap, herringbone twill  
Blanket, wool, od  
Poncho, lightweight, od  
Anti-insect items

Cold Weather

Undershirt & Drawers, winter  
Shirt, flannel, od, & Trousers, field, wool, od  
Jacket, wool, od  
Jacket, field, w/hood, jacket & overcoat  
Jacket & Trousers, herringbone twill  
Boots, service, combat, russet; w/1 pr. socks, wool, cushion sole  
Shoepacs, 12 in.; w/2 pr. socks, wool, ski; 1 pr. insoles, felt  
Glove-shells, leather; w/2 pr. inserts, wool  
Cap, field, cotton, od, w/visor  
Muffler, wool, od  
Bag, sleeping, mountain  
Case, water repellent, bag, sleeping  
Poncho, lightweight

Warm and hot weather clothing, as listed in Table 2, is generally suitable for wear in summer in all parts of the region, and throughout the year in areas where mean monthly temperatures are above 68°F, such as in the central and southern Sahara (Areas II-A and II-B), the Sudan (II-A), and along the Gulf of Guinea (I-A).

Cool weather clothing, ordinarily suitable for wear when the mean monthly temperatures are between 50° and 68°F, may be used in winter in the northern Sahara (II-C) and along the Atlantic and Mediterranean coasts. It is suitable in part or all of the year in the intermediate levels of the mountain areas, including the offshore islands.

At the higher elevations of most mainland and insular mountain areas, when the mean monthly temperatures are between 14° and 50°F, cold weather clothing is worn. In the Fouta Djallon Plateau (Area I-2), this ensemble is never required.

6. INSECTS. Nearly all of Northwest Africa presents requirements for some, if not all, of the anti-insect items. The extreme northern coast in winter and the high sections of the mountains are the only exceptions. Mosquitoes, vectors of malaria, yellow fever, filariasis, and dengue, are common throughout the southern half of this region as well as in northern coastal marshes, upland salt flats, desert pools, and irrigation ditches.

The common house fly in Northwest Africa carries the germs of typhoid, cholera, dysentery, scarlet fever, tuberculosis, etc.; it is found throughout the region, except in the most arid sections of the desert; and is especially rife around native huts and trails. The sand fly, a vector of sand fly fever, may be found any where in the desert. Many sections of the southern half of this region are infested with tsetse fly, similar in appearance to the common house fly; it is usually found along rivers and in stands of low bush, and is a bearer of sleeping sickness.

Poisonous spiders, centipedes, and scorpions may be found throughout the desert periphery. Fleas, ticks, ants, lice, mites, and bedbugs are common in both the extreme northern and southern parts of this region. Clothing stored in foot lockers or barracks bags may be damaged by white ants, locusts, moths, cockroaches, silverfish, and crickets, all of which are especially common in the southern half of the region.

7. SUPPLEMENTARY ARMY PUBLICATIONS. Information concerning the construction, function, manner of wear, and approved methods of care of each item of clothing may be found in one or more of the following Army publications:

a. FM 70-10: Mountain Operations (September 1947). Chapter 1, General Considerations; Chapter 4, Conditioning and Acclimatization; Chapter 6, Weather; and Chapter 7, Winter Characteristics, discuss the relationship between the soldier and the mountain environment.

b. FM 31-25: Desert Operations (March 1942). Section I discusses the general aspects and problems of desert environment. Section II gives general consideration of the food, clothing, and individual equipment needs.

c. FM 72-20: Jungle Warfare (October 1944). Of special value are Chapter 1, General Characteristics of the Jungle; Chapter 2, Health and Hygiene and Sanitation; Chapter 3, Jungle Service; Chapter 4, Jungle Operations; Appendix I, Native Plants; and Appendix II, Use of Jungle Machete.

d. FM 21-15: Individual Clothing and Equipment (April 1945). Emphasis is placed on the care of clothing and equipment and methods of assembling and packing.

e. TM 10-228: Fitting of Shoes and Socks (February 1946). The importance of proper shoe fitting methods, foot measuring equipment and procedure, sock fitting and also correlation, and data for boots and shoes including approved sock combinations, are the more important sections of this manual.

8. OTHER CLOTHING ALMANACS. Clothing Almanacs for adjoining regions are:

Northeast Africa (No. 3, March 1950)  
Central Africa  
Western Europe  
Southeast Europe

9. CLOTHING REQUIREMENT TABLES. The 29 tables of Field Clothing Requirements for the 15 Areas of Northwest Africa are arranged according to Clothing Allowance Zones, those for Zone I being followed by those for Zone II. Within each zone, the tables for non-mountainous areas come first; in alphabetical order, the mountain area tables follow in numerical order, with the tables for the lowest elevation of each area coming first, then for upper levels in ascending order.

Areas to which each table applies are shown on the folding map in the back. For the best use of the tables, especially as regards selection from them of clothing items best suited to the individual location and year, the preceding text should be consulted.

# FIELD CLOTHING REQUIREMENTS

## NORTHWEST AFRICA I-A

	Jan	Feb	Mar	Apr	May	Jun	Jul	Aug	Sep	Oct	Nov	Dec
<b>BODY CLOTHING</b>												
* Jacket, field, w/hood, jacket & overcoat . . . . .												
Jacket & Trousers, lightweight special . . . . .												
Poncho, lightweight, od . . . . .												
* Raincoat . . . . .												
Shirt & Trousers, cotton, khaki . . . . .												
Shirt, knit, od . . . . .												
<b>FOOTGEAR</b>												
Boots, combat, tropical; w/1 pr. socks, wool, cushion sole; 1 pr. insoles, ventilating . . . . .												
* Boots, service, combat, russet, OR Shoes, service; w/1 pr. socks, wool, cushion sole . . . . .												
<b>HANDGEAR</b>												
None												
<b>HEADGEAR</b>												
Cap, herringbone twill . . . . .												
* Helmet, sun . . . . .												
<b>SLEEPING EQUIPMENT</b>												
Blanket, lightweight . . . . .												
Blanket, wool, od . . . . .												
<b>OTHER ITEMS</b>												
Anti-insect ( See Introduction ) . . . . .												

- Item usually required in this month
- \* Item usually required in indicated months, but must be procured specially because "discretionary" in this zone.

5/25/50

# FIELD CLOTHING REQUIREMENTS

## NORTHWEST AFRICA I-B

	Jan	Feb	Mar	Apr	May	Jun	Jul	Aug	Sep	Oct	Nov	Dec
<b>BODY CLOTHING</b>												
* Jacket, field, w/hood, jacket & overcoat . . . . .												
Jacket & Trousers, lightweight special . . . . .												
Poncho, lightweight, od . . . . .												
* Raincoat . . . . .												
Shirt & Trousers, cotton, khaki . . . . .												
Shirt, knit, od . . . . .												
<b>FOOTGEAR</b>												
Boots, combat, tropical; w/1 pr. socks, wool, cushion sole; 1 pr. insoles, ventilating . . . . .												
* Boots, service, combat, russet, OR Shoes, service; w/1 pr. socks, wool, cushion sole . . . . .												
<b>HANDGEAR</b>												
None												
<b>HEADGEAR</b>												
Cap, herringbone twill . . . . .												
* Helmet, sun . . . . .												
<b>SLEEPING EQUIPMENT</b>												
Blanket, lightweight . . . . .												
Blanket, wool, od . . . . .												
<b>OTHER ITEMS</b>												
Anti-insect ( See Introduction ) . . . . .												

— Item usually required in this month  
 \* Item usually required in indicated months, but must be procured specially because "discretionary" in this zone.

5/25/50

# FIELD CLOTHING REQUIREMENTS

## NORTHWEST AFRICA I-1 (4000-7000 ft.)

	Jan	Feb	Mar	Apr	May	Jun	Jul	Aug	Sep	Oct	Nov	Dec
<b>BODY CLOTHING</b>												
* Jacket, field, w/hood, jacket & overcoat . . . . .												
Jacket & Trousers, lightweight special . . . . .												
Poncho, lightweight, od . . . . .												
* Raincoat . . . . .												
Shirt & Trousers, cotton, khaki . . . . .												
Shirt, knit, od . . . . .												
<b>FOOTGEAR</b>												
Boots, combat, tropical; w/l pr. socks, wool, cushion sole; 1 pr. insoles, ventilating . . . . .												
* Boots, service, combat, russet, OR Shoes, service; w/l pr. socks, wool, cushion sole . . . . .												
<b>HANDGEAR</b>												
None												
<b>HEADGEAR</b>												
Cap, herringbone twill . . . . .												
* Helmet, sun . . . . .												
<b>SLEEPING EQUIPMENT</b>												
Blanket, lightweight . . . . .												
Blanket, wool, od . . . . .												
<b>OTHER ITEMS</b>												
Anti-insect ( See Introduction ) . . . . .												

— Item usually required in this month  
 \* Item usually required in indicated months, but must be procured specially because "discretionary" in this zone.

5/25/50

# FIELD CLOTHING REQUIREMENTS

## NORTHWEST AFRICA I-1 (7000-10000 ft.)

	Jan	Feb	Mar	Apr	May	Jun	Jul	Aug	Sep	Oct	Nov	Dec
<b>BODY CLOTHING</b>												
Jacket, field, w/hood, jacket & overcoat . . . . .												
Jacket, wool, od . . . . .												
Jacket & Trousers, herringbone twill . . . . .												
Overcoat, wool, od . . . . .												
* Parka & Trousers, field, overwhite . . . . .												
* Parka & Trousers, wet weather . . . . .												
Poncho, lightweight, od . . . . .												
* Raincoat . . . . .												
Shirt & Trousers, cotton, khaki . . . . .												
Shirt, flannel, od, & Trousers, field, wool, od . . . . .												
* Shirt, knit, od . . . . .												
Sweater, high neck . . . . .												
Trousers, field, cotton, od . . . . .												
Undershirt & Drawers, winter . . . . .												
<b>FOOTGEAR</b>												
* Boots, combat, tropical; w/lpr. socks, wool, cushion sole; lpr. insoles, ventilating . . . . .												
* Boots, knee wader . . . . .												
Boots, service, combat, russet, OR Shoes, service; w/lpr. socks, wool, cushion sole . . . . .												
<b>HANDGEAR</b>												
Glove-shells, leather, w/2pr. inserts, wool . . . . .												
* Mittens, overwhite . . . . .												
<b>HEADGEAR</b>												
Cap, field, cotton, od, w/visor . . . . .												
* Cap, herringbone twill . . . . .												
* Helmet, sun . . . . .												
* Muffler wool, od . . . . .												
<b>SLEEPING EQUIPMENT</b>												
* Bag, sleeping, mountain . . . . .												
* Bag, sleeping, wool . . . . .												
* Blanket, wool, od . . . . .												
* Case, water repellent, bag, sleeping . . . . .												
<b>OTHER ITEMS</b>												
* Anti-insect (See Introduction) . . . . .												

5/25/50

— Item usually required in this month

\* Item usually required in indicated months, but must be procured specially because "discretionary" in this zone

# FIELD CLOTHING REQUIREMENTS

## NORTHWEST AFRICA I-1 (above 10000 ft.)

	Jan	Feb	Mar	Apr	May	Jun	Jul	Aug	Sep	Oct	Nov	Dec
<b>BODY CLOTHING</b>												
Jacket, field, w/hood, jacket & overcoat. . . . .												
Jacket, wool, od. . . . .												
Jacket & Trousers, herringbone twill . . . . .												
Overcoat, wool, od. . . . .												
* Parka & Trousers, field, overwhite . . . . .												
* Parka & Trousers, wet weather . . . . .												
Poncho, lightweight, od. . . . .												
* Raincoat. . . . .												
* Shirt & Trousers, cotton, khaki . . . . .												
Shirt, flannel, od, & Trousers, field, wool, od. . . . .												
Sweater, high neck . . . . .												
Trousers, field, cotton, od . . . . .												
Undershirt & Drawers, winter. . . . .												
<b>FOOTGEAR</b>												
* Boots, knee wader . . . . .												
Boots, service, combat, russet, OR Shoes, service; w/1pr. socks, wool, cushion sole. . . . .												
* Shoe-pacs, 12 in., w/2 pr. socks, wool, ski; 1pr. insoles, felt. . . . .												
<b>HANDGEAR</b>												
Glove - shells, leather, w/2 pr. inserts, wool. . . . .												
* Mittens, overwhite . . . . .												
<b>HEADGEAR</b>												
Cap, field, cotton, od, w/visor . . . . .												
* Cap, herringbone twill . . . . .												
* Muffler, wool, od . . . . .												
<b>SLEEPING EQUIPMENT</b>												
* Bag, sleeping, mountain. . . . .												
* Bag, sleeping, wool. . . . .												
* Blanket, wool, od. . . . .												
* Case, water repellent, bag, sleeping. . . . .												
<b>OTHER ITEMS</b>												
* Anti - insect ( See Introduction ). . . . .												

5/25/50

- Item usually required in this month
- \* Item usually required in indicated months, but must be procured specially because "discretionary" in this zone

# FIELD CLOTHING REQUIREMENTS

## NORTHWEST AFRICA I-2 (4000-5500 ft.)

	Jan	Feb	Mar	Apr	May	Jun	Jul	Aug	Sep	Oct	Nov	Dec
<b>BODY CLOTHING</b>												
* Jacket, field, w/hood, jacket & overcoat . . . . .												
Jacket & Trousers, lightweight special . . . . .												
Poncho, lightweight, od . . . . .												
* Raincoat . . . . .												
Shirt & Trousers, cotton, khaki . . . . .												
Shirt, knit, od . . . . .												
<b>FOOTGEAR</b>												
Boots, combat, tropical; w/l pr. socks, wool, cushion sole; 1 pr. insoles, ventilating . . . . .												
* Boots, service, combat, russet, OR Shoes, service; w/l pr. socks, wool, cushion sole . . . . .												
<b>HANDGEAR</b>												
None												
<b>HEADGEAR</b>												
Cap, herringbone twill . . . . .												
* Helmet, sun . . . . .												
<b>SLEEPING EQUIPMENT</b>												
Blanket, lightweight . . . . .												
Blanket, wool, od . . . . .												
<b>OTHER ITEMS</b>												
Anti-insect ( See Introduction ) . . . . .												

— Item usually required in this month  
 \* Item usually required in indicated months, but must be procured specially because "discretionary" in this zone.

5/25/50

# FIELD CLOTHING REQUIREMENTS

## NORTHWEST AFRICA I-2 (above 5500 ft.)

	Jan	Feb	Mar	Apr	May	Jun	Jul	Aug	Sep	Oct	Nov	Dec
<b>BODY CLOTHING</b>												
Jacket, field, w/hood, jacket & overcoat . . . . .												
Jacket, wool, od . . . . .												
Jacket & Trousers, herringbone twill . . . . .												
Overcoat, wool, od . . . . .												
* Parka & Trousers, field, overwhite . . . . .												
* Parka & Trousers, wet weather . . . . .												
Poncho, lightweight, od . . . . .												
* Raincoat . . . . .												
Shirt & Trousers, cotton, khaki . . . . .												
Shirt, flannel, od, & Trousers, field, wool, od . . . . .												
* Shirt, knit, od . . . . .												
Sweater, high neck . . . . .												
Trousers, field, cotton, od . . . . .												
Undershirt & Drawers, winter . . . . .												
<b>FOOTGEAR</b>												
* Boots, combat, tropical; w/lpr. socks, wool, cushion sole; lpr. insoles, ventilating . . . . .												
* Boots, knee wader . . . . .												
Boots, service, combat, russet, OR Shoes, service; w/lpr. socks, wool, cushion sole. . . . .												
<b>HANDGEAR</b>												
Glove-shells, leather, w/2pr. inserts, wool . . . . .												
* Mittens, overwhite . . . . .												
<b>HEADGEAR</b>												
Cap, field, cotton, od, w/visor . . . . .												
* Cap, herringbone twill . . . . .												
* Helmet, sun . . . . .												
* Muffler wool, od . . . . .												
<b>SLEEPING EQUIPMENT</b>												
* Bag, sleeping, mountain . . . . .												
* Bag, sleeping, wool . . . . .												
* Blanket, wool, od . . . . .												
* Case, water repellent, bag, sleeping . . . . .												
<b>OTHER ITEMS</b>												
* Anti-insect (See Introduction) . . . . .												

5/25/50

- Item usually required in this month
- \* Item usually required in indicated months, but must be procured specially because "discretionary" in this zone

# FIELD CLOTHING REQUIREMENTS

## NORTHWEST AFRICA I-3 (below 3000 ft.)

	Jan	Feb	Mar	Apr	May	Jun	Jul	Aug	Sep	Oct	Nov	Dec
<b>BODY CLOTHING</b>												
* Jacket, field, w/hood, jacket & overcoat . . . . .												
Jacket & Trousers, lightweight special . . . . .												
Poncho, lightweight, od . . . . .												
* Raincoat . . . . .												
Shirt & Trousers, cotton, khaki . . . . .												
Shirt, knit, od . . . . .												
<b>FOOTGEAR</b>												
Boots, combat, tropical; w/1 pr. socks, wool, cushion sole; 1 pr. insoles, ventilating . . . . .												
* Boots, service, combat, russet, OR Shoes, service; w/1 pr. socks, wool, cushion sole . . . . .												
<b>HANDGEAR</b>												
None												
<b>HEADGEAR</b>												
Cap, herringbone twill . . . . .												
* Helmet, sun . . . . .												
<b>SLEEPING EQUIPMENT</b>												
Blanket, lightweight . . . . .												
Blanket, wool, od . . . . .												
<b>OTHER ITEMS</b>												
Anti-insect ( See Introduction ) . . . . .												

— Item usually required in this month  
 \* Item usually required in indicated months, but must be procured specially because "discretionary" in this zone.

5/25/50

# FIELD CLOTHING REQUIREMENTS

## NORTHWEST AFRICA I-3 (3000-6000 ft.)

	Jan	Feb	Mar	Apr	May	Jun	Jul	Aug	Sep	Oct	Nov	Dec
<b>BODY CLOTHING</b>												
* Jacket, field, w/hood, jacket & overcoat . . . . .												
Jacket & Trousers, lightweight special . . . . .												
Poncho, lightweight, od . . . . .												
* Raincoat . . . . .												
Shirt & Trousers, cotton, khaki . . . . .												
Shirt, knit, od . . . . .												
<b>FOOTGEAR</b>												
Boots, combat, tropical; w/1 pr. socks, wool, cushion sole; 1 pr. insoles, ventilating . . . . .												
* Boots, service, combat, russet, OR Shoes, service; w/1 pr. socks, wool, cushion sole . . . . .												
<b>HANDGEAR</b>												
None												
<b>HEADGEAR</b>												
Cap, herringbone twill . . . . .												
* Helmet, sun . . . . .												
<b>SLEEPING EQUIPMENT</b>												
Blanket, lightweight . . . . .												
Blanket, wool, od . . . . .												
<b>OTHER ITEMS</b>												
Anti-insect ( See Introduction ) . . . . .												

— Item usually required in this month

\* Item usually required in indicated months, but must be procured specially because "discretionary" in this zone.

5/25/50

# FIELD CLOTHING REQUIREMENTS

## NORTHWEST AFRICA I-3 (6000 - 9000 ft.)

	Jan	Feb	Mar	Apr	May	Jun	Jul	Aug	Sep	Oct	Nov	Dec
<b>BODY CLOTHING</b>												
Jacket, field, w/hood, jacket & overcoat . . . . .												
Jacket, wool, od . . . . .												
Jacket & Trousers, herringbone twill . . . . .												
Overcoat, wool, od . . . . .												
* Parka & Trousers, field, overwhite . . . . .												
* Parka & Trousers, wet weather . . . . .												
Poncho, lightweight, od . . . . .												
* Raincoat . . . . .												
Shirt & Trousers, cotton, khaki . . . . .												
Shirt, flannel, od, & Trousers, field, wool, od . . . . .												
* Shirt, knit, od . . . . .												
Sweater, high neck . . . . .												
Trousers, field, cotton, od . . . . .												
Undershirt & Drawers, winter . . . . .												
<b>FOOTGEAR</b>												
* Boots, combat, tropical; w/lpr. socks, wool, cushion sole; lpr. insoles, ventilating . . . . .												
* Boots, knee wader . . . . .												
Boots, service, combat, russet, OR Shoes, service; w/lpr. socks, wool, cushion sole . . . . .												
<b>HANDGEAR</b>												
Glove-shells, leather, w/2 pr. inserts, wool . . . . .												
* Mittens, overwhite . . . . .												
<b>HEADGEAR</b>												
Cap, field, cotton, od, w/visor . . . . .												
* Cap, herringbone twill . . . . .												
* Helmet, sun . . . . .												
* Muffler wool, od . . . . .												
<b>SLEEPING EQUIPMENT</b>												
* Bag, sleeping, mountain . . . . .												
* Bag, sleeping, wool . . . . .												
* Blanket, wool, od . . . . .												
* Case, water repellent, bag, sleeping . . . . .												
<b>OTHER ITEMS</b>												
* Anti-insect (See Introduction) . . . . .												

5/25/50

Item usually required in this month

\* Item usually required in indicated months, but must be procured specially because "discretionary" in this zone

# FIELD CLOTHING REQUIREMENTS

## NORTHWEST AFRICA I-3 (above 9000 ft.)

	Jan	Feb	Mar	Apr	May	Jun	Jul	Aug	Sep	Oct	Nov	Dec
<b>BODY CLOTHING</b>												
Jacket, field, w/hood, jacket & overcoat . . . . .												
Jacket, wool, od . . . . .												
Jacket & Trousers, herringbone twill . . . . .												
Overcoat, wool, od . . . . .												
* Parka & Trousers, field, overwhite . . . . .												
* Parka & Trousers, wet weather . . . . .												
Poncho, lightweight, od . . . . .												
* Raincoat . . . . .												
Shirt & Trousers, cotton, khaki . . . . .												
Shirt, flannel, od, & Trousers, field, wool, od . . . . .												
* Shirt, knit, od . . . . .												
Sweater, high neck . . . . .												
Trousers, field, cotton, od . . . . .												
Undershirt & Drawers, winter . . . . .												
<b>FOOTGEAR</b>												
* Boots, combat, tropical; w/lpr. socks, wool, cushion sole; lpr. insoles, ventilating . . . . .												
* Boots, knee wader . . . . .												
Boots, service, combat, russet, OR Shoes, service; w/lpr. socks, wool, cushion sole . . . . .												
<b>HANDGEAR</b>												
Glove-shells, leather, w/2pr. inserts, wool . . . . .												
* Mittens, overwhite . . . . .												
<b>HEADGEAR</b>												
Cap, field, cotton, od, w/visor . . . . .												
* Cap, herringbone twill . . . . .												
* Helmet, sun . . . . .												
* Muffler wool, od . . . . .												
<b>SLEEPING EQUIPMENT</b>												
* Bag, sleeping, mountain . . . . .												
* Bag, sleeping, wool . . . . .												
* Blanket, wool, od . . . . .												
* Case, water repellent, bag, sleeping . . . . .												
<b>OTHER ITEMS</b>												
* Anti-insect (See Introduction) . . . . .												

— Item usually required in this month

\* Item usually required in indicated months, but must be procured specially because "discretionary" in this zone

5/25/50

# FIELD CLOTHING REQUIREMENTS

## NORTHWEST AFRICA II-A

	Jan	Feb	Mar	Apr	May	Jun	Jul	Aug	Sep	Oct	Nov	Dec
<b>BODY CLOTHING</b>												
Jacket, field, w/hood, jacket & overcoat . . . . .												
* Jacket, wool, od . . . . .												
Jacket & Trousers, lightweight special. . . . .												
Poncho, lightweight, od. . . . .												
* Raincoat . . . . .												
Shirt & Trousers, cotton, khaki. . . . .												
* Shirt, flannel, od, & Trousers, field, wool, od . . . . .												
* Shirt, knit, od. . . . .												
* Sweater, high neck . . . . .												
* Trousers, field, cotton, od . . . . .												
* Undershirt & Drawers, winter. . . . .												
<b>FOOTGEAR</b>												
* Boots, combat, tropical; w/1 pr. socks, wool, cushion sole; 1 pr. insoles, ventilating . . . . .												
* Boots, knee wader. . . . .												
Boots, service, combat, russet, OR Shoes, service; w/1 pr. socks, wool, cushion sole . . . . .												
<b>HANDGEAR</b>												
None												
<b>HEADGEAR</b>												
Cap, herringbone twill . . . . .												
* Helmet, sun . . . . .												
<b>SLEEPING EQUIPMENT</b>												
* Blanket, lightweight. . . . .												
Blanket, wool, od. . . . .												
<b>OTHER ITEM</b>												
Anti-insect ( See Introduction). . . . .												

5/25/50

Item usually required in this month  
 \* Item usually required in indicated months, but must be procured specially because "discretionary" in this zone.

# FIELD CLOTHING REQUIREMENTS

## NORTHWEST AFRICA II-B

### BODY CLOTHING

	Jan	Feb	Mar	Apr	May	Jun	Jul	Aug	Sep	Oct	Nov	Dec
Jacket, field, w/hood, jacket & overcoat. . . . .												
* Jacket, wool, od . . . . .												
Jacket & Trousers, lightweight special. . . . .												
Poncho, lightweight, od. . . . .												
* Raincoat . . . . .												
Shirt & Trousers, cotton, khaki. . . . .												
* Shirt, flannel, od, & Trousers, field, wool, od . . . . .												
* Shirt, knit, od. . . . .												
* Sweater, high neck . . . . .												
* Trousers, field, cotton, od . . . . .												
* Undershirt & Drawers, winter. . . . .												
<b>FOOTGEAR</b>												
* Boots, combat, tropical; w/l pr. socks, wool, cushion sole; 1 pr. insoles, ventilating . . . . .												
* Boots, knee wader. . . . .												
Boots, service, combat, russet, OR Shoes, service; w/l pr. socks, wool, cushion sole . . . . .												
<b>HANDGEAR</b>												
None												
<b>HEADGEAR</b>												
Cap, herringbone twill . . . . .												
* Helmet, sun . . . . .												
<b>SLEEPING EQUIPMENT</b>												
* Blanket, lightweight. . . . .												
Blanket, wool, od. . . . .												
<b>OTHER ITEM</b>												
Anti-insect ( See Introduction). . . . .												

Item usually required in this month  
 \* Item usually required in indicated months, but must be procured specially because "discretionary" in this zone.

5/25/50

# FIELD CLOTHING REQUIREMENTS

## NORTHWEST AFRICA II-C

	Jan	Feb	Mar	Apr	May	Jun	Jul	Aug	Sep	Oct	Nov	Dec
<b>BODY CLOTHING</b>												
Jacket, field, w/hood, jacket & overcoat. . . . .												
* Jacket, wool, od . . . . .												
Jacket & Trousers, lightweight special. . . . .												
Poncho, lightweight, od. . . . .												
* Raincoat . . . . .												
Shirt & Trousers, cotton, khaki. . . . .												
* Shirt, flannel, od, & Trousers, field, wool, od . . . . .												
* Shirt, knit, od. . . . .												
* Sweater, high neck . . . . .												
* Trousers, field, cotton, od . . . . .												
* Undershirt & Drawers, winter. . . . .												
<b>FOOTGEAR</b>												
* Boots, combat, tropical; w/1 pr. socks, wool, cushion sole; 1 pr. insoles, ventilating . . . . .												
* Boots, knee wader. . . . .												
Boots, service, combat, russet, OR Shoes, service; w/1 pr. socks, wool, cushion sole . . . . .												
<b>HANDGEAR</b>												
None												
<b>HEADGEAR</b>												
Cap, herringbone twill . . . . .												
* Helmet, sun . . . . .												
<b>SLEEPING EQUIPMENT</b>												
* Blanket, lightweight. . . . .												
Blanket, wool, od. . . . .												
<b>OTHER ITEM</b>												
Anti-insect ( See Introduction). . . . .												

5/25/50

Item usually required in this month  
 \* Item usually required in indicated months, but must be procured specially because "discretionary" in this zone.

# FIELD CLOTHING REQUIREMENTS

## NORTHWEST AFRICA II-D

	Jan	Feb	Mar	Apr	May	Jun	Jul	Aug	Sep	Oct	Nov	Dec
<b>BODY CLOTHING</b>												
Jacket, field, w/hood, jacket & overcoat. . . . .												
* Jacket, wool, od. . . . .												
Jacket & Trousers, lightweight special. . . . .												
Poncho, lightweight, od. . . . .												
* Raincoat . . . . .												
Shirt & Trousers, cotton, khaki. . . . .												
* Shirt, flannel, od, & Trousers, field, wool, od. . . . .												
* Shirt, knit, od. . . . .												
* Sweater, high neck . . . . .												
* Trousers, field, cotton, od. . . . .												
* Undershirt & Drawers, winter. . . . .												
<b>FOOTGEAR</b>												
* Boots, combat, tropical; w/1 pr. socks, wool, cushion sole; 1 pr. insoles, ventilating . . . . .												
* Boots, knee wader. . . . .												
Boots, service, combat, russet, OR Shoes, service; w/1 pr. socks, wool, cushion sole . . . . .												
<b>HANDGEAR</b>												
None												
<b>HEADGEAR</b>												
Cap, herringbone twill . . . . .												
* Helmet, sun . . . . .												
<b>SLEEPING EQUIPMENT</b>												
* Blanket, lightweight. . . . .												
Blanket, wool, od. . . . .												
<b>OTHER ITEM</b>												
Anti-insect ( See Introduction). . . . .												

■ Item usually required in this month  
 \* Item usually required in indicated months, but must be procured specially because "discretionary" in this zone.

5/25/50

# FIELD CLOTHING REQUIREMENTS

## NORTHWEST AFRICA II-E

### BODY CLOTHING

- Jacket, field, w/hood, jacket & overcoat. . . . .
- \* Jacket, wool, od . . . . .
- Jacket & Trousers, lightweight special. . . . .
- Poncho, lightweight, od. . . . .
- \* Raincoat . . . . .
- Shirt & Trousers, cotton, khaki. . . . .
- \* Shirt, flannel, od, & Trousers, field, wool, od . . . . .
- \* Shirt, knit, od. . . . .
- \* Sweater, high neck . . . . .
- \* Trousers, field, cotton, od . . . . .
- \* Undershirt & Drawers, winter. . . . .

### FOOTGEAR

- \* Boots, combat, tropical; w/1 pr. socks, wool, cushion sole; 1 pr. insoles, ventilating . . . . .
- \* Boots, knee wader. . . . .
- Boots, service, combat, russet, OR Shoes, service; w/1 pr. socks, wool, cushion sole . . . . .

### HANDGEAR

None

### HEADGEAR

- Cap, herringbone twill . . . . .
- \* Helmet, sun . . . . .

### SLEEPING EQUIPMENT

- \* Blanket, lightweight. . . . .
- Blanket, wool, od. . . . .

### OTHER ITEM

- Anti-insect ( See Introduction). . . . .

	Jan	Feb	Mar	Apr	May	Jun	Jul	Aug	Sep	Oct	Nov	Dec
Jacket, field, w/hood, jacket & overcoat. . . . .												
* Jacket, wool, od . . . . .												
Jacket & Trousers, lightweight special. . . . .												
Poncho, lightweight, od. . . . .												
* Raincoat . . . . .												
Shirt & Trousers, cotton, khaki. . . . .												
* Shirt, flannel, od, & Trousers, field, wool, od . . . . .												
* Shirt, knit, od. . . . .												
* Sweater, high neck . . . . .												
* Trousers, field, cotton, od . . . . .												
* Undershirt & Drawers, winter. . . . .												
FOOTGEAR												
* Boots, combat, tropical; w/1 pr. socks, wool, cushion sole; 1 pr. insoles, ventilating . . . . .												
* Boots, knee wader. . . . .												
Boots, service, combat, russet, OR Shoes, service; w/1 pr. socks, wool, cushion sole . . . . .												
HANDGEAR												
None												
HEADGEAR												
Cap, herringbone twill . . . . .												
* Helmet, sun . . . . .												
SLEEPING EQUIPMENT												
* Blanket, lightweight. . . . .												
Blanket, wool, od. . . . .												
OTHER ITEM												
Anti-insect ( See Introduction). . . . .												

Item usually required in this month  
 \* Item usually required in indicated months, but must be procured specially because "discretionary" in this zone.

5/25/50

# FIELD CLOTHING REQUIREMENTS

## NORTHWEST AFRICA II-F

	Jan	Feb	Mar	Apr	May	Jun	Jul	Aug	Sep	Oct	Nov	Dec
<b>BODY CLOTHING</b>												
Jacket, field, w/hood, jacket & overcoat. . . . .												
* Jacket, wool, od . . . . .												
Jacket & Trousers, lightweight special. . . . .												
Poncho, lightweight, od. . . . .												
* Raincoat . . . . .												
Shirt & Trousers, cotton, khaki. . . . .												
* Shirt, flannel, od, & Trousers, field, wool, od . . . . .												
* Shirt, knit, od. . . . .												
* Sweater, high neck . . . . .												
* Trousers, field, cotton, od . . . . .												
* Undershirt & Drawers, winter. . . . .												
<b>FOOTGEAR</b>												
* Boots, combat, tropical; w/1 pr. socks, wool, cushion sole; 1 pr. insoles, ventilating . . . . .												
* Boots, knee wader. . . . .												
Boots, service, combat, russet, OR Shoes, service; w/1 pr. socks, wool, cushion sole . . . . .												
<b>HANDGEAR</b>												
None												
<b>HEADGEAR</b>												
Cap, herringbone twill . . . . .												
* Helmet, sun . . . . .												
<b>SLEEPING EQUIPMENT</b>												
* Blanket, lightweight. . . . .												
Blanket, wool, od. . . . .												
<b>OTHER ITEM</b>												
Anti-insect ( See Introduction). . . . .												

■ Item usually required in this month  
 \* Item usually required in indicated months, but must be procured specially because "discretionary" in this zone.

5/25/50

# FIELD CLOTHING REQUIREMENTS

## NORTHWEST AFRICA II-1 (4000 - 6000 ft.)

	Jan	Feb	Mar	Apr	May	Jun	Jul	Aug	Sep	Oct	Nov	Dec
<b>BODY CLOTHING</b>												
Jacket, field, w/hood, jacket & overcoat. . . . .												
* Jacket, wool, od . . . . .												
Jacket & Trousers, lightweight special. . . . .												
Poncho, lightweight, od. . . . .												
* Raincoat . . . . .												
Shirt & Trousers, cotton, khaki. . . . .												
* Shirt, flannel, od, & Trousers, field, wool, od . . . . .												
* Shirt, knit, od. . . . .												
* Sweater, high neck . . . . .												
* Trousers, field, cotton, od . . . . .												
* Undershirt & Drawers, winter. . . . .												
<b>FOOTGEAR</b>												
* Boots, combat, tropical; w/1 pr. socks, wool, cushion sole; 1 pr. insoles, ventilating . . . . .												
* Boots, knee wader. . . . .												
Boots, service, combat, russet, OR Shoes, service; w/1 pr. socks, wool, cushion sole . . . . .												
<b>HANDGEAR</b>												
None												
<b>HEADGEAR</b>												
Cap, herringbone twill . . . . .												
* Helmet, sun . . . . .												
<b>SLEEPING EQUIPMENT</b>												
* Blanket, lightweight. . . . .												
Blanket, wool, od. . . . .												
<b>OTHER ITEM</b>												
Anti-insect ( See Introduction). . . . .												

█ Item usually required in this month  
 \* Item usually required in indicated months, but must be procured specially because "discretionary" in this zone.

5/25/50

# FIELD CLOTHING REQUIREMENTS

## NORTHWEST AFRICA II-1 (6000 - 8000 ft.)

	Jan	Feb	Mar	Apr	May	Jun	Jul	Aug	Sep	Oct	Nov	Dec
<b>BODY CLOTHING</b>												
Jacket, field, w/hood, jacket & overcoat . . . . .												
Jacket, wool, od . . . . .												
Jacket & Trousers, herringbone twill . . . . .												
Overcoat, wool, od . . . . .												
* Parka & Trousers, field, overwhite . . . . .												
* Parka & Trousers, wet weather . . . . .												
Poncho, lightweight, od . . . . .												
* Raincoat . . . . .												
Shirt & Trousers, cotton, khaki . . . . .												
Shirt, flannel, od, & Trousers, field, wool, od . . . . .												
* Shirt, knit, od . . . . .												
Sweater, high neck . . . . .												
Trousers, field, cotton, od . . . . .												
Undershirt & Drawers, winter . . . . .												
<b>FOOTGEAR</b>												
* Boots, combat, tropical; w/1pr. socks, wool, cushion sole; 1pr. insoles, ventilating . . . . .												
* Boots, knee wader . . . . .												
Boots, service, combat, russet, OR Shoes, service; w/1pr. socks, wool, cushion sole . . . . .												
<b>HANDGEAR</b>												
Glove-shells, leather, w/2pr. inserts, wool . . . . .												
* Mittens, overwhite . . . . .												
<b>HEADGEAR</b>												
Cap, field, cotton, od, w/visor . . . . .												
* Cap, herringbone twill . . . . .												
* Helmet, sun . . . . .												
* Muffler, wool, od . . . . .												
<b>SLEEPING EQUIPMENT</b>												
* Bag, sleeping, mountain . . . . .												
* Bag, sleeping, wool . . . . .												
* Blanket, wool, od . . . . .												
* Case, water repellent, bag, sleeping . . . . .												
<b>OTHER ITEMS</b>												
* Anti-insect (See Introduction) . . . . .												

— Item usually required in this month  
 \* Item usually required in indicated months, but must be procured specially because "discretionary" in this zone

5/25/50

# FIELD CLOTHING REQUIREMENTS

## NORTHWEST AFRICA II - I (above 8000 ft.)

	Jan	Feb	Mar	Apr	May	Jun	Jul	Aug	Sep	Oct	Nov	Dec
<b>BODY CLOTHING</b>												
Jacket, field, w/hood, jacket & overcoat. . . . .												
Jacket, wool, od. . . . .												
Jacket & Trousers, herringbone twill . . . . .												
Overcoat, wool, od. . . . .												
* Parka & Trousers, field, overwhite . . . . .												
* Parka & Trousers, wet weather . . . . .												
Poncho, lightweight, od. . . . .												
* Raincoat. . . . .												
* Shirt & Trousers, cotton, khaki . . . . .												
Shirt, flannel, od, & Trousers, field, wool, od. . . . .												
Sweater, high neck . . . . .												
Trousers, field, cotton, od . . . . .												
Undershirt & Drawers, winter. . . . .												
<b>FOOTGEAR</b>												
* Boots, knee wader . . . . .												
Boots, service, combat, russet, OR Shoes, service; w/1pr. socks, wool, cushion sole . . . . .												
* Sheepacs, 12 in., w/2pr. socks, wool, ski; 1pr. insoles, felt. . . . .												
<b>HANDGEAR</b>												
Glove - shells, leather, w/2pr. inserts, wool. . . . .												
* Mittens, overwhite . . . . .												
<b>HEADGEAR</b>												
Cap, field, cotton, od, w/visor . . . . .												
* Cap, herringbone twill . . . . .												
* Muffler, wool, od . . . . .												
<b>SLEEPING EQUIPMENT</b>												
* Bag, sleeping, mountain. . . . .												
* Bag, sleeping, wool. . . . .												
* Blanket, wool, od. . . . .												
* Case, water repellent, bag, sleeping. . . . .												
<b>OTHER ITEMS</b>												
* Anti - insect ( See Introduction ). . . . .												

5/25/50

— Item usually required in this month  
 \* Item usually required in indicated months, but must be procured specially because "discretionary" in this zone

# FIELD CLOTHING REQUIREMENTS

## NORTHERN AFRICA II-2 (3500 - 6500 ft.)

### BODY CLOTHING

	Jan	Feb	Mar	Apr	May	Jun	Jul	Aug	Sep	Oct	Nov	Dec
Jacket, field, w/hood, jacket & overcoat. . . . .												
* Jacket, wool, od . . . . .												
Jacket & Trousers, lightweight special. . . . .												
Poncho, lightweight, od. . . . .												
* Raincoat . . . . .												
Shirt & Trousers, cotton, khaki. . . . .												
* Shirt, flannel, od, & Trousers, field, wool, od . . . . .												
* Shirt, knit, od. . . . .												
* Sweater, high neck . . . . .												
* Trousers, field, cotton, od . . . . .												
* Undershirt & Drawers, winter. . . . .												
<b>FOOTGEAR</b>												
* Boots, combat, tropical; w/1 pr. socks, wool, cushion sole; 1 pr. insoles, ventilating . . . . .												
* Boots, knee wader. . . . .												
Boots, service, combat, russet, OR Shoes, service; w/1 pr. socks, wool, cushion sole . . . . .												
<b>HANDGEAR</b>												
None												
<b>HEADGEAR</b>												
Cap, herringbone twill . . . . .												
* Helmet, sun . . . . .												
<b>SLEEPING EQUIPMENT</b>												
* Blanket, lightweight. . . . .												
Blanket, wool, od. . . . .												
<b>OTHER ITEM</b>												
Anti-insect ( See Introduction). . . . .												

Item usually required in this month  
 \* Item usually required in indicated months, but must be procured specially because "discretionary" in this zone.

5/25/50

# FIELD CLOTHING REQUIREMENTS

## NORTHWEST AFRICA II-2 (6500 - 9500 ft.)

	Jan	Feb	Mar	Apr	May	Jun	Jul	Aug	Sep	Oct	Nov	Dec
<b>BODY CLOTHING</b>												
Jacket, field, w/hood, jacket & overcoat . . . . .												
Jacket, wool, od . . . . .												
Jacket & Trousers, herringbone twill . . . . .												
Overcoat, wool, od . . . . .												
* Parka & Trousers, field, overwhite . . . . .												
* Parka & Trousers, wet weather . . . . .												
Poncho, lightweight, od . . . . .												
* Raincoat . . . . .												
Shirt & Trousers, cotton, khaki . . . . .												
Shirt, flannel, od, & Trousers, field, wool, od . . . . .												
* Shirt, knit, od . . . . .												
Sweater, high neck . . . . .												
Trousers, field, cotton, od . . . . .												
Undershirt & Drawers, winter . . . . .												
<b>FOOTGEAR</b>												
* Boots, combat, tropical; w/lpr. socks, wool, cushion sole; lpr. insoles, ventilating . . . . .												
* Boots, knee wader . . . . .												
Boots, service, combat, russet, OR Shoes, service; w/lpr. socks, wool, cushion sole . . . . .												
<b>HANDGEAR</b>												
Glove-shells, leather, w/2pr. inserts, wool . . . . .												
* Mittens, overwhite . . . . .												
<b>HEADGEAR</b>												
Cap, field, cotton, od, w/visor . . . . .												
* Cap, herringbone twill . . . . .												
* Helmet, sun . . . . .												
* Muffler, wool, od . . . . .												
<b>SLEEPING EQUIPMENT</b>												
* Bag, sleeping, mountain . . . . .												
* Bag, sleeping, wool . . . . .												
* Blanket, wool, od . . . . .												
* Case, water repellent, bag, sleeping . . . . .												
<b>OTHER ITEMS</b>												
* Anti-insect (See Introduction) . . . . .												

5/25/50

- Item usually required in this month
- \* Item usually required in indicated months, but must be procured specially because "discretionary" in this zone

# FIELD CLOTHING REQUIREMENTS

## NORTHWEST AFRICA II - 2 (above 9500 ft.)

	Jan	Feb	Mar	Apr	May	Jun	Jul	Aug	Sep	Oct	Nov	Dec
<b>BODY CLOTHING</b>												
Jacket, field, w/hood, jacket & overcoat. . . . .												
Jacket, wool, od. . . . .												
Jacket & Trousers, herringbone twill . . . . .												
Overcoat, wool, od. . . . .												
* Parka & Trousers, field, overwhite . . . . .												
* Parka & Trousers, wet weather . . . . .												
Poncho, lightweight, od. . . . .												
* Raincoat. . . . .												
* Shirt & Trousers, cotton, khaki . . . . .												
Shirt, flannel, od, & Trousers, field, wool, od. . . . .												
Sweater, high neck . . . . .												
Trousers, field, cotton, od . . . . .												
Undershirt & Drawers, winter. . . . .												
<b>FOOTGEAR</b>												
* Boots, knee wader . . . . .												
Boots, service, combat, russet, OR Shoes, service; w/1pr. socks, wool, cushion sole. . . . .												
* Shoe-pacs, 12 in., w/2 pr. socks, wool, ski; 1 pr. insoles, felt. . . . .												
<b>HANDGEAR</b>												
Glove - shells, leather, w/2 pr. inserts, wool. . . . .												
* Mittens, overwhite . . . . .												
<b>HEADGEAR</b>												
Cap, field, cotton, od, w/visor . . . . .												
* Cap, herringbone twill . . . . .												
* Muffler, wool, od . . . . .												
<b>SLEEPING EQUIPMENT</b>												
* Bag, sleeping, mountain. . . . .												
* Bag, sleeping, wool. . . . .												
* Blanket, wool, od. . . . .												
* Case, water repellent, bag, sleeping. . . . .												
<b>OTHER ITEMS</b>												
* Anti - insect ( See Introduction ). . . . .												

— Item usually required in this month  
 \* Item usually required in indicated months, but must be procured specially because "discretionary" in this zone

5/25/50

# FIELD CLOTHING REQUIREMENTS

## NORTHWEST AFRICA II - 3 (3500 - 5000 ft.)

	Jan	Feb	Mar	Apr	May	Jun	Jul	Aug	Sep	Oct	Nov	Dec
<b>BODY CLOTHING</b>												
Jacket, field, w/hood, jacket & overcoat . . . . .												
* Jacket, wool, od . . . . .												
Jacket & Trousers, lightweight special . . . . .												
Poncho, lightweight, od . . . . .												
* Raincoat . . . . .												
Shirt & Trousers, cotton, khaki . . . . .												
* Shirt, flannel, od, & Trousers, field, wool, od . . . . .												
* Shirt, knit, od . . . . .												
* Sweater, high neck . . . . .												
* Trousers, field, cotton, od . . . . .												
* Undershirt & Drawers, winter . . . . .												
<b>FOOTGEAR</b>												
* Boots, combat, tropical; w/l pr. socks, wool, cushion sole; 1 pr. insoles, ventilating . . . . .												
* Boots, knee wader . . . . .												
Boots, service, combat, russet, OR Shoes, service; w/l pr. socks, wool, cushion sole . . . . .												
<b>HANDGEAR</b>												
None												
<b>HEADGEAR</b>												
Cap, herringbone twill . . . . .												
* Helmet, sun . . . . .												
<b>SLEEPING EQUIPMENT</b>												
* Blanket, lightweight . . . . .												
Blanket, wool, od . . . . .												
<b>OTHER ITEM</b>												
Anti-insect ( See Introduction) . . . . .												

Item usually required in this month  
 \* Item usually required in indicated months, but must be procured specially because "discretionary" in this zone.

5/25/50

# FIELD CLOTHING REQUIREMENTS

## NORTHWEST AFRICA II-3 (above 5000 ft.)

	Jan	Feb	Mar	Apr	May	Jun	Jul	Aug	Sep	Oct	Nov	Dec
<b>BODY CLOTHING</b>												
Jacket, field, w/hood, jacket & overcoat												
Jacket, wool, od												
Jacket & Trousers, herringbone twill												
Overcoat, wool, od												
* Parka & Trousers, field, overwhite												
* Parka & Trousers, wet weather												
Poncho, lightweight, od												
* Raincoat												
Shirt & Trousers, cotton, khaki												
Shirt, flannel, od, & Trousers, field, wool, od												
* Shirt, knit, od												
Sweater, high neck												
Trousers, field, cotton, od												
Undershirt & Drawers, winter												
<b>FOOTGEAR</b>												
* Boots, combat, tropical; w/lpr. socks, wool, cushion sole; lpr. insoles, ventilating												
* Boots, knee wader												
Boots, service, combat, russet, OR Shoes, service; w/lpr. socks, wool, cushion sole												
<b>HANDGEAR</b>												
Glove-shells, leather, w/2pr. inserts, wool												
* Mittens, overwhite												
<b>HEADGEAR</b>												
Cap, field, cotton, od, w/visor												
* Cap, herringbone twill												
* Helmet, sun												
* Muffler wool, od												
<b>SLEEPING EQUIPMENT</b>												
* Bag, sleeping, mountain												
* Bag, sleeping, wool												
* Blanket, wool, od												
* Case, water repellent, bag, sleeping												
<b>OTHER ITEMS</b>												
* Anti-insect (See Introduction)												

— Item usually required in this month

\* Item usually required in indicated months, but must be procured specially because "discretionary" in this zone

5/25/50

# FIELD CLOTHING REQUIREMENTS

## NORTHWEST AFRICA II-4 (below 2500ft.)

	Jan	Feb	Mar	Apr	May	Jun	Jul	Aug	Sep	Oct	Nov	Dec
<b>BODY CLOTHING</b>												
Jacket, field, w/hood, jacket & overcoat. . . . .												
* Jacket, wool, od . . . . .												
Jacket & Trousers, lightweight special. . . . .												
Poncho, lightweight, od. . . . .												
* Raincoat . . . . .												
Shirt & Trousers, cotton, khaki. . . . .												
* Shirt, flannel, od, & Trousers, field, wool, od . . . . .												
* Shirt, knit, od. . . . .												
* Sweater, high neck . . . . .												
* Trousers, field, cotton, od . . . . .												
* Undershirt & Drawers, winter. . . . .												
<b>FOOTGEAR</b>												
* Boots, combat, tropical; w/1 pr. socks, wool, cushion sole; 1 pr. insoles, ventilating . . . . .												
* Boots, knee wader. . . . .												
Boots, service, combat, russet, OR Shoes, service; w/1 pr. socks, wool, cushion sole . . . . .												
<b>HANDGEAR</b>												
None												
<b>HEADGEAR</b>												
Cap, herringbone twill . . . . .												
* Helmet, sun . . . . .												
<b>SLEEPING EQUIPMENT</b>												
* Blanket, lightweight. . . . .												
Blanket, wool, od. . . . .												
<b>OTHER ITEM</b>												
Anti-insect ( See Introduction). . . . .												

■ Item usually required in this month  
 \* Item usually required in indicated months, but must be procured specially because "discretionary" in this zone.

5/25/50

# FIELD CLOTHING REQUIREMENTS

## NORTHWEST AFRICA II-4 (2500 - 5000 ft.)

	Jan	Feb	Mar	Apr	May	Jun	Jul	Aug	Sep	Oct	Nov	Dec
<b>BODY CLOTHING</b>												
Jacket, field, w/hood, jacket & overcoat . . . . .												
Jacket, wool, od . . . . .												
Jacket & Trousers, herringbone twill . . . . .												
Overcoat, wool, od . . . . .												
* Parka & Trousers, field, overwhite . . . . .												
* Parka & Trousers, wet weather . . . . .												
Poncho, lightweight, od . . . . .												
* Raincoat . . . . .												
Shirt & Trousers, cotton, khaki . . . . .												
Shirt, flannel, od, & Trousers, field, wool, od . . . . .												
* Shirt, knit, od . . . . .												
Sweater, high neck . . . . .												
Trousers, field, cotton, od . . . . .												
Undershirt & Drawers, winter . . . . .												
<b>FOOTGEAR</b>												
* Boots, combat, tropical; w/1pr. socks, wool, cushion sole; 1pr. insoles, ventilating . . . . .												
* Boots, knee wader . . . . .												
Boots, service, combat, russet, OR Shoes, service; w/1pr. socks, wool, cushion sole . . . . .												
<b>HANDGEAR</b>												
Glove-shells, leather, w/2pr. inserts, wool . . . . .												
* Mittens, overwhite . . . . .												
<b>HEADGEAR</b>												
Cap, field, cotton, od, w/visor . . . . .												
* Cap, herringbone twill . . . . .												
* Helmet, sun . . . . .												
* Muffler, wool, od . . . . .												
<b>SLEEPING EQUIPMENT</b>												
* Bag, sleeping, mountain . . . . .												
* Bag, sleeping, wool . . . . .												
* Blanket, wool, od . . . . .												
* Case, water repellent, bag, sleeping . . . . .												
<b>OTHER ITEMS</b>												
* Anti-insect ( See Introduction ) . . . . .												

5/25/50

— Item usually required in this month

\* Item usually required in indicated months, but must be procured specially because "discretionary" in this zone

# FIELD CLOTHING REQUIREMENTS

## NORTHWEST AFRICA II-4 (5000 - 9000 ft.)

	Jan	Feb	Mar	Apr	May	Jun	Jul	Aug	Sep	Oct	Nov	Dec
<b>BODY CLOTHING</b>												
Jacket, field, w/hood, jacket & overcoat . . . . .												
Jacket, wool, od . . . . .												
Jacket & Trousers, herringbone twill . . . . .												
Overcoat, wool, od . . . . .												
* Parka & Trousers, field, overwhite . . . . .												
* Parka & Trousers, wet weather . . . . .												
Poncho, lightweight, od . . . . .												
* Raincoat . . . . .												
Shirt & Trousers, cotton, khaki . . . . .												
Shirt, flannel, od, & Trousers, field, wool, od . . . . .												
* Shirt, knit, od . . . . .												
Sweater, high neck . . . . .												
Trousers, field, cotton, od . . . . .												
Undershirt & Drawers, winter . . . . .												
<b>FOOTGEAR</b>												
* Boots, combat, tropical; w/lpr. socks, wool, cushion sole; lpr. insoles, ventilating . . . . .												
* Boots, knee wader . . . . .												
Boots, service, combat, russet, OR Shoes, service; w/lpr. socks, wool, cushion sole . . . . .												
<b>HANDGEAR</b>												
Glove-shells, leather, w/2pr. inserts, wool . . . . .												
* Mittens, overwhite . . . . .												
<b>HEADGEAR</b>												
Cap, field, cotton, od, w/visor . . . . .												
* Cap, herringbone twill . . . . .												
* Helmet, sun . . . . .												
* Muffler wool, od . . . . .												
<b>SLEEPING EQUIPMENT</b>												
* Bag, sleeping, mountain . . . . .												
* Bag, sleeping, wool . . . . .												
* Blanket, wool, od . . . . .												
* Case, water repellent, bag, sleeping . . . . .												
<b>OTHER ITEMS</b>												
* Anti-insect (See Introduction) . . . . .												

5/25/50

- Item usually required in this month
- \* Item usually required in indicated months, but must be procured specially because "discretionary" in this zone

# FIELD CLOTHING REQUIREMENTS

## NORTHWEST AFRICA II-4 (above 9000 ft.)

	Jan	Feb	Mar	Apr	May	Jun	Jul	Aug	Sep	Oct	Nov	Dec
<b>BODY CLOTHING</b>												
Jacket, field, w/hood, jacket & overcoat. . . . .												
Jacket, wool, od. . . . .												
Jacket & Trousers, herringbone twill . . . . .												
Overcoat, wool, od. . . . .												
* Parka & Trousers, field, overwhite . . . . .												
* Parka & Trousers, wet weather . . . . .												
Poncho, lightweight, od. . . . .												
* Raincoat. . . . .												
* Shirt & Trousers, cotton, khaki . . . . .												
Shirt, flannel, od, & Trousers, field, wool, od. . . . .												
Sweater, high neck . . . . .												
Trousers, field, cotton, od . . . . .												
Undershirt & Drawers, winter. . . . .												
<b>FOOTGEAR</b>												
* Boots, knee wader . . . . .												
Boots, service, combat, russet, OR Shoes, service; w/1pr. socks, wool, cushion sole . . . . .												
* Shoepacs, 12 in., w/2pr. socks, wool, ski; 1pr. insoles, felt. . . . .												
<b>HANDGEAR</b>												
Glove - shells, leather, w/2pr. inserts, wool. . . . .												
* Mittens, overwhite . . . . .												
<b>HEADGEAR</b>												
Cap, field, cotton, od, w/visor . . . . .												
* Cap, herringbone twill . . . . .												
* Muffler, wool, od . . . . .												
<b>SLEEPING EQUIPMENT</b>												
* Bag, sleeping, mountain. . . . .												
* Bag, sleeping, wool. . . . .												
* Blanket, wool, od. . . . .												
* Case, water repellent, bag, sleeping. . . . .												
<b>OTHER ITEMS</b>												
* Anti - insect ( See Introduction ). . . . .												

— Item usually required in this month

\* Item usually required in indicated months, but must be procured specially because "discretionary" in this zone

5/25/50

# NORTHWEST AFRICA

CLOTHING ALMANAC NO. 8




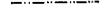
## CLOTHING REQUIREMENT AREAS

Roman numerals refer to T/A-21 Clothing Allowance Zones.

Arabic numbers refer to mountain areas.

Letters refer to nonmountain areas.

### BOUNDARIES

-  Boundaries
-  Clothing Allowance Zones
-  Clothing Requirement Areas
-  International

Clothing Requirements for each area are shown on the corresponding table in the Clothing Almanac

