



NIMA Address to the Executive Forum on Modeling & Simulation

Mr I.P. Buck
Associate Deputy Director -
Plans & Customer Operations
NIMA

REPORT DOCUMENTATION PAGE

Form Approved OMB No.
0704-0188

Public reporting burden for this collection of information is estimated to average 1 hour per response, including the time for reviewing instructions, searching existing data sources, gathering and maintaining the data needed, and completing and reviewing this collection of information. Send comments regarding this burden estimate or any other aspect of this collection of information, including suggestions for reducing this burden to Department of Defense, Washington Headquarters Services, Directorate for Information Operations and Reports (0704-0188), 1215 Jefferson Davis Highway, Suite 1204, Arlington, VA 22202-4302. Respondents should be aware that notwithstanding any other provision of law, no person shall be subject to any penalty for failing to comply with a collection of information if it does not display a currently valid OMB control number. PLEASE DO NOT RETURN YOUR FORM TO THE ABOVE ADDRESS.

1. REPORT DATE (DD-MM-YYYY) 01-05-2002	2. REPORT TYPE Briefing	3. DATES COVERED (FROM - TO) xx-xx-2002 to xx-xx-2002	
4. TITLE AND SUBTITLE NIMA Address to the Executive Forum on Modeling & Simulation Unclassified		5a. CONTRACT NUMBER	
		5b. GRANT NUMBER	
		5c. PROGRAM ELEMENT NUMBER	
6. AUTHOR(S) Buck, I. P. ;		5d. PROJECT NUMBER	
		5e. TASK NUMBER	
		5f. WORK UNIT NUMBER	
7. PERFORMING ORGANIZATION NAME AND ADDRESS NIMA xxxxx, xxxxxxx		8. PERFORMING ORGANIZATION REPORT NUMBER	
9. SPONSORING/MONITORING AGENCY NAME AND ADDRESS United States Department of Defense Defense Modeling and Simulation Office 1901 N. Beauregard Street, Suite 500 Alexandria, VA22311-1705		10. SPONSOR/MONITOR'S ACRONYM(S)	
		11. SPONSOR/MONITOR'S REPORT NUMBER(S)	
12. DISTRIBUTION/AVAILABILITY STATEMENT APUBLIC RELEASE			
13. SUPPLEMENTARY NOTES			
14. ABSTRACT NIMA Mission: To provide timely, relevant, and accurate imagery, imagery intelligence, and geospatial information in support of the national security objectives of the United States.			
15. SUBJECT TERMS			
16. SECURITY CLASSIFICATION OF:		17. LIMITATION OF ABSTRACT	18. NUMBER OF PAGES
a. REPORT Unclassified	b. ABSTRACT Unclassified	c. THIS PAGE Unclassified Public Release	15
		19. NAME OF RESPONSIBLE PERSON Fenster, Lynn lfenster@dtic.mil	
		19b. TELEPHONE NUMBER International Area Code Area Code Telephone Number 703767-9007 DSN 427-9007	
			<small>Standard Form 298 (Rev. 8-98) Prescribed by ANSI Std Z39.18</small>



NIMA Mission

To provide timely, relevant, and accurate imagery, imagery intelligence, and geospatial information in support of the national security objectives of the United States.





NIMA Standup

1 October 1996

**Incorporated
entirely . . .**

- **Defense Mapping Agency**
- **Central Imagery Office**
- **Defense Dissemination Program Office**
- **National Photographic Interpretation Center**



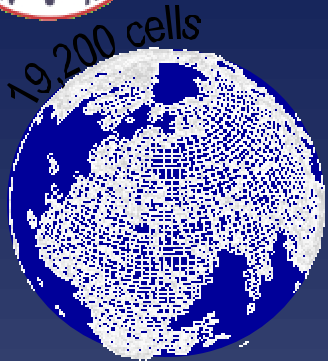
**Incorporated
imagery program
elements of . . .**

- **Defense Airborne Reconnaissance Office**
- **National Reconnaissance Office**
- **Defense Intelligence Agency**
- **Central Intelligence Agency**

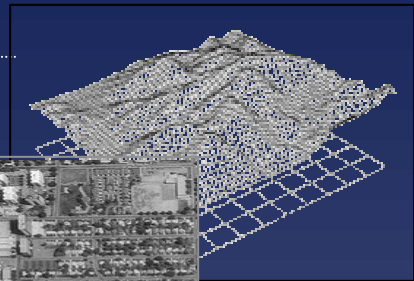


Foundation-based Operations

The Near Global Framework for Readiness



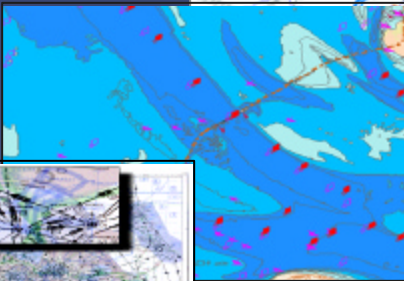
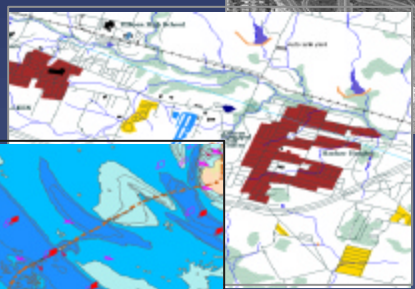
Elevation (Shuttle Mission) ←



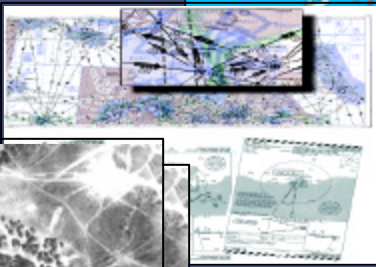
5M Controlled Imagery ←



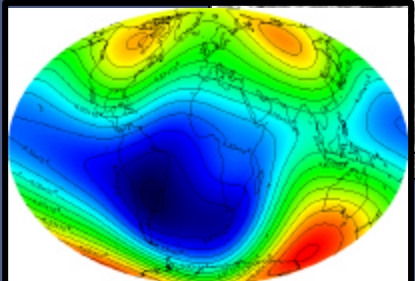
Foundation Feature Data / VMAP1 in areas of no FFD ←



▶ Hydrographic Safety of Navigation



▶ Aeronautical Safety of Navigation



▶ Digital Point Positioning Database

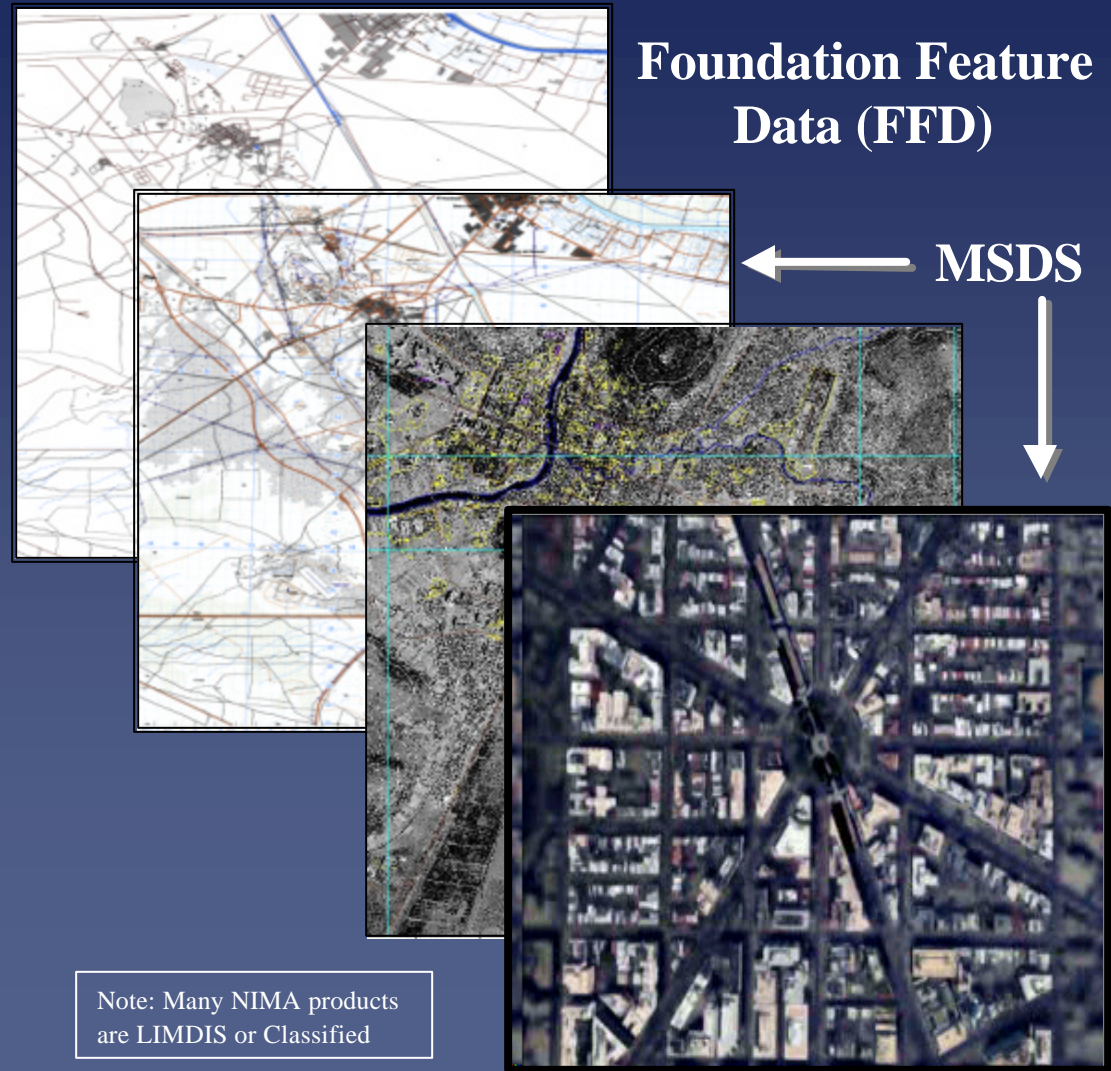
▶ Geodesy & Geophysics

Note: Many NIMA products are LIMDIS or Classified



Mission Specific Data Set (MSDS)

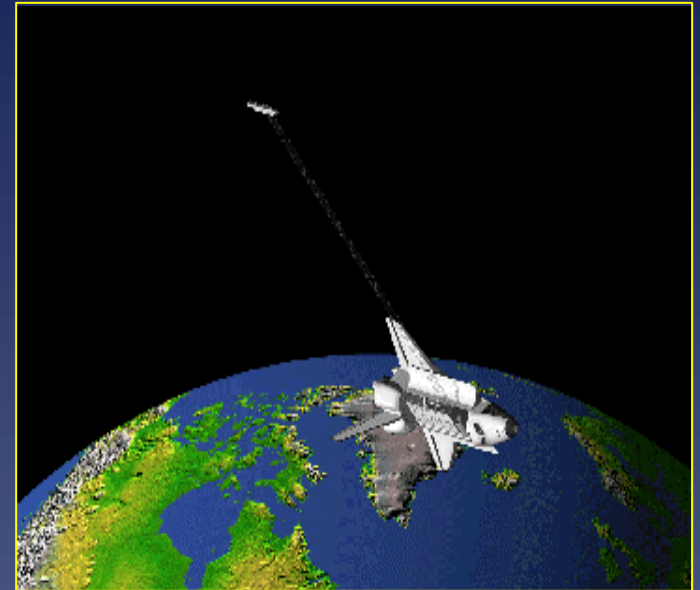
- Imagery, elevation, and/or feature data at an increased level of accuracy, attribution, and density
- Provides a common framework for interoperability - UCDM
- Built upon Foundation Data
- Content driven
- Focused on specific objective areas
- Based on customer defined missions and intended uses
- Types of MSDS are:
 - Standard
 - Tailored
- Independent of format
- Supports value-adding





Shuttle Radar Topographic Mission (SRTM)

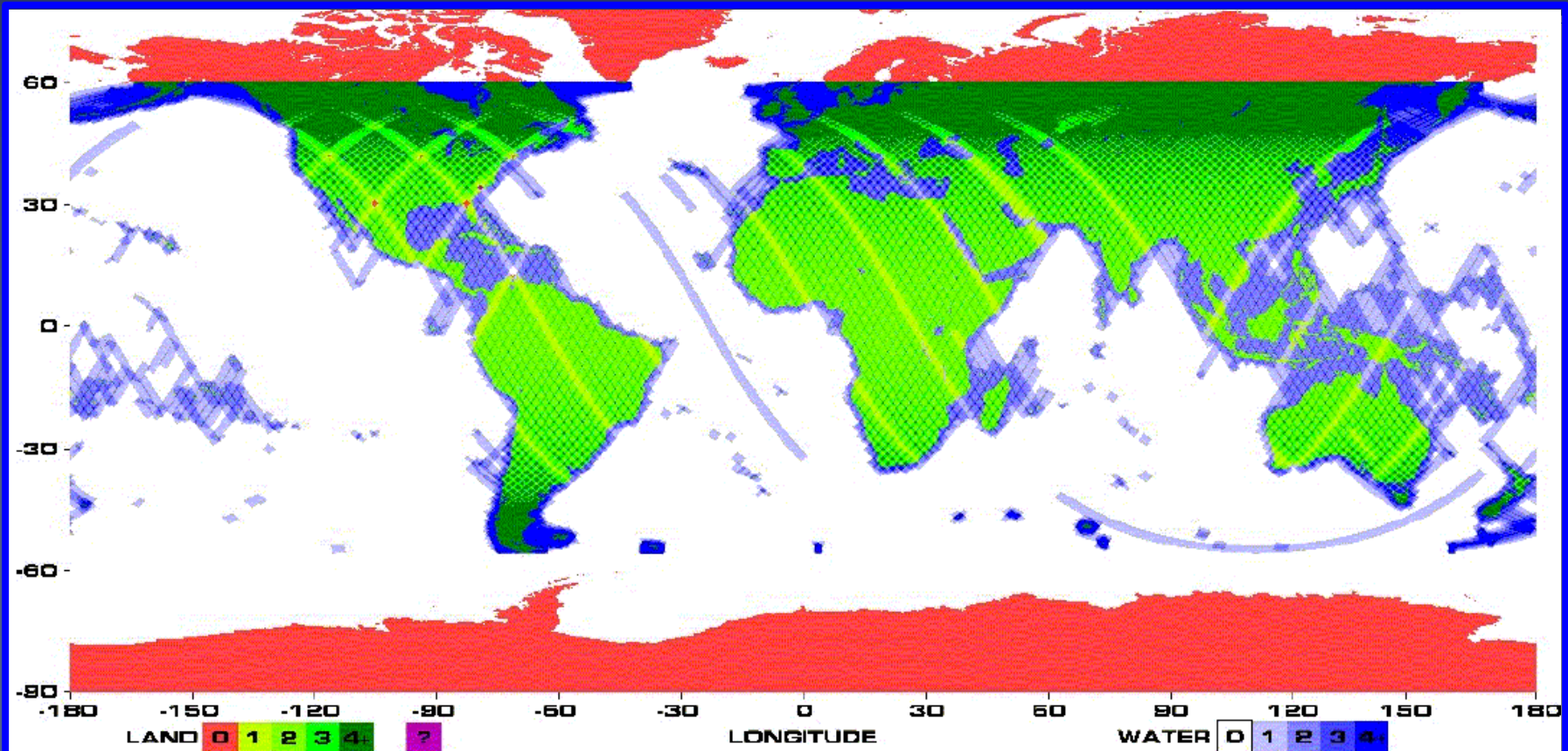
- SRTM is a joint NIMA/NASA Space Shuttle Mission to collect terrain height information at 1 arc sec density from 60°N to 57°S (80% of earth's landmass; 14400 1° cells)
- SRTM mission complete 11-22 Feb 2000, resulted in 99.98% data acquisition
- Incremental data finishing from December 2001 to April 2003
- NIMA processing of terrain height data to DTED2 format according to CINC/Service priorities



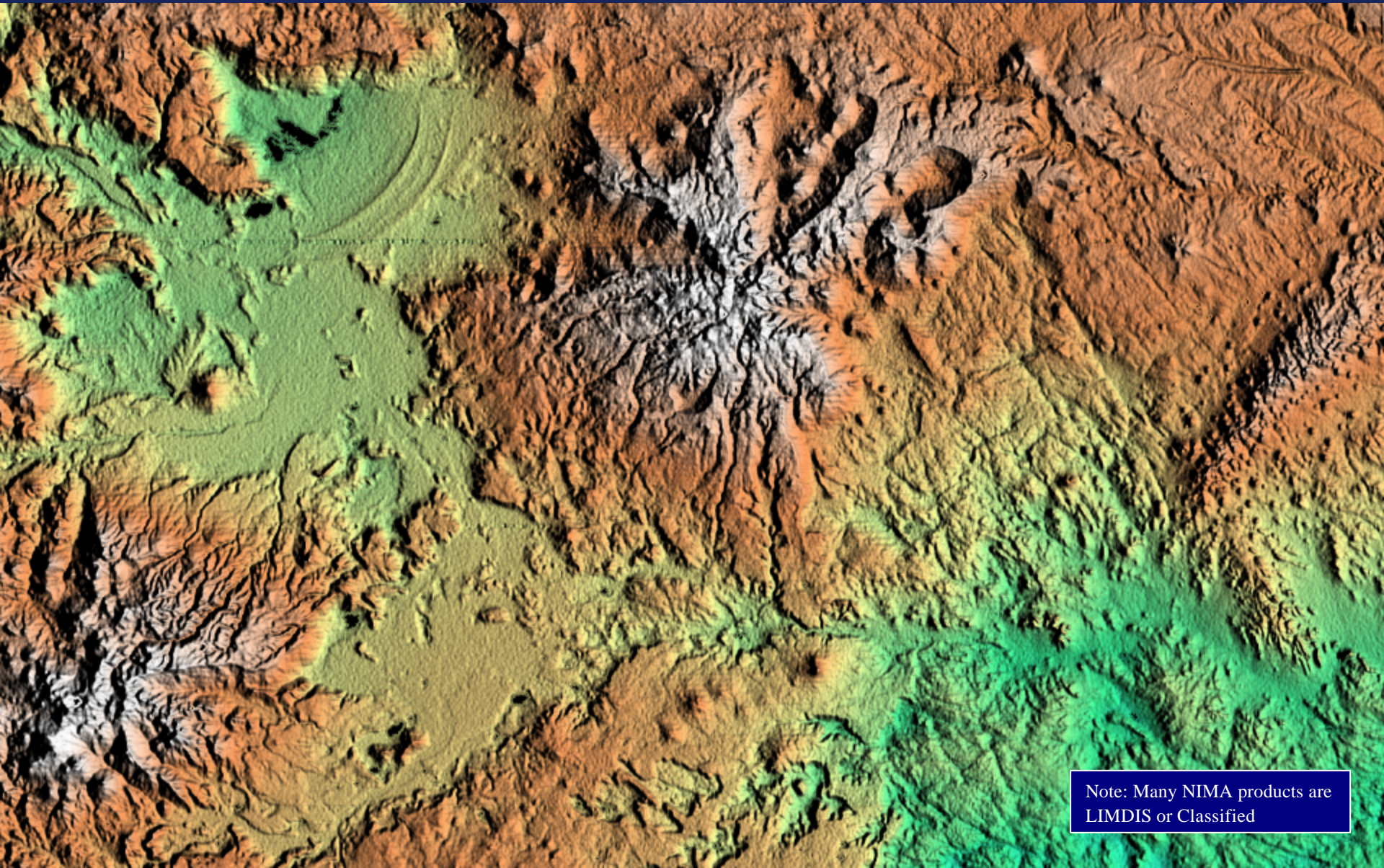


SRTM Collection Overview

- *Extremely successful collection by the Shuttle (~119 million km²)*
- *80% of the Earth's land mass imaged between 60N and 54S (Southern Alaska to Tierra del Fuego)*
- *99.96% imaged once and 94.59% imaged twice*



*Shaded relief map of Patagonia, Argentina
from SRTM data, 20 Feb 00*



Note: Many NIMA products are
LIMDIS or Classified



NIMA GI3 IPT

- Director of NIMA authorized the establishment of the Geospatial Information Infrastructure Implementation Integrated Product Team (GI3IPT), which began on 7 Aug 2000 and will run until June 2001.
- The team is focusing the attention of the community on the geospatial domain of the USIGS within the FY 2001-2010 timeframe with a view toward achieving the tenets of the DCI's Statement of Strategic Intent and JV2020.
- The team aims to deliver the final USIGS Geospatial Transition Plan in June 2001



Army Environmental Database IPT

- D/NIMA is a signatory of the OIPT Charter
- Army participation with the NIMA GI3 IPT has been productive
 - Mid Level Leadership at NIMA has agreed to include expanding the UCDM to accommodate all Army requirements for Geospatial Information required to support future M&S and C4I systems
- Army is finalizing the requirements documents for TCDM as a standard MSDS



NIMA as an M&S data producer

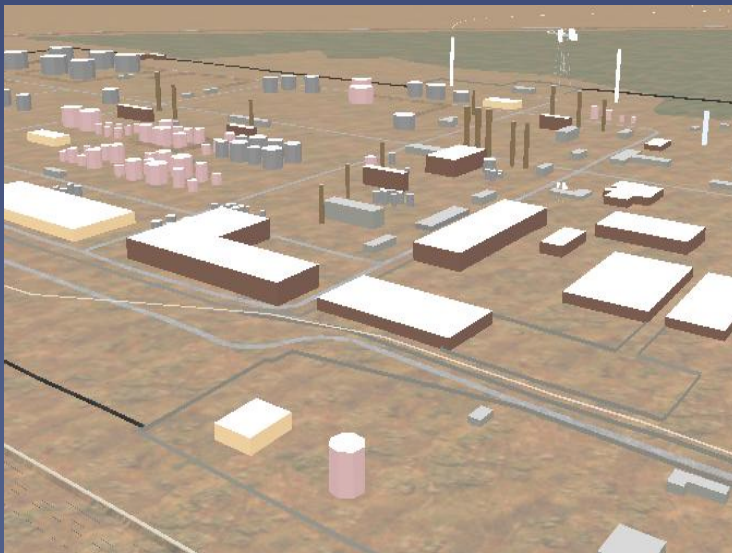
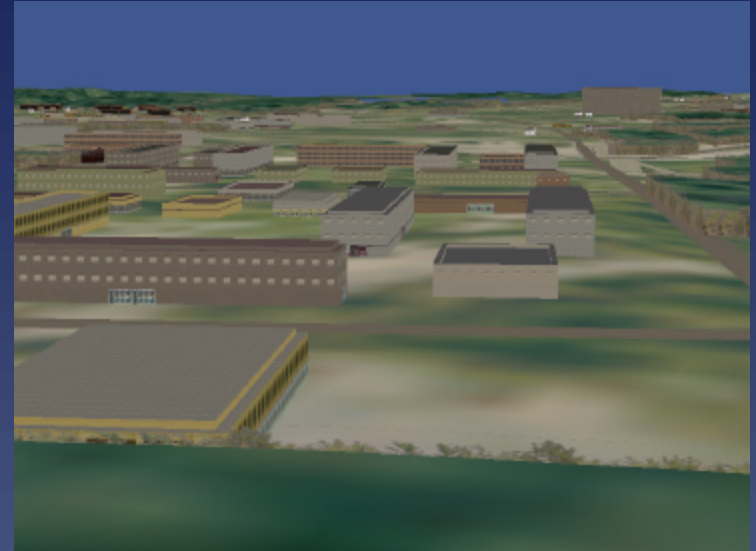
- Currently M&S data sets are not part of standard NIMA production
 - Low priority compared to CINC requirements
 - NIMA data is often LIMDIS or classified
- NIMA Foundation Data and current Mission Specific Data Sets are designed for C4I systems not specifically for M&S systems
 - Army's adoption of TCDM as an MSDS requirement will help





NIMA as an M&S data producer

- NIMA production to support M&S has been in the form of custom data sets for individual activities



- Examples
 - MOUT ACTD
 - MMBL
 - Army Experimentation



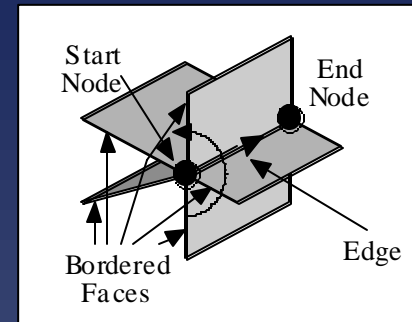
NIMA Future M&S Role

- NIMA is the Executive Agent for terrain data
 - Provided support to DMSO via Terrain Modeling Project Office (TMPO)
 - Support included R&D and data production
- Liaison and contact with DMSO has diminished with time
 - NIMA aiming to re-energize the relationship
 - M&S community needs to help define requirements



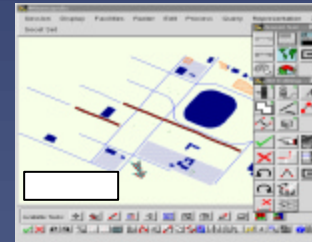
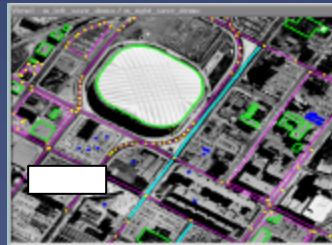
NIMA M&S Relevant R&D

- Volume Topology Definition and Development
 - FY98 DMSO funding continued by NIMA
 - Currently at the prototype stage



- Object Oriented Data Base / Stereo Workstation

Minneapolis
stereo pair



Corresponding Gothic dataset

- Spatial Object Transfer Format - NIMA 1998
 - Extending OGC Geography Markup Language
 - SOTF 'features', topological primitives. Node feature with its geometry, coordinates, and edge which is dependent upon that particular node. Edge feature with directed edges listed and the nodes upon which the edge is dependent
 - Possible mechanism for Volume Topology



Questions