

AD _____

Award Number: DAMD17-97-1-7342

TITLE: Role of NF1 and NF2 in Signaling and Transformation

PRINCIPAL INVESTIGATOR: Channing J. Der, Ph.D.

CONTRACTING ORGANIZATION: University of North Carolina
Chapel Hill, North Carolina 27599-1350

REPORT DATE: October 2000

TYPE OF REPORT: Final

PREPARED FOR: U.S. Army Medical Research and Materiel Command
Fort Detrick, Maryland 21702-5012

DISTRIBUTION STATEMENT: Approved for Public Release;
Distribution Unlimited

The views, opinions and/or findings contained in this report are those of the author(s) and should not be construed as an official Department of the Army position, policy or decision unless so designated by other documentation.

20021101 032

REPORT DOCUMENTATION PAGE

Form Approved
OMB No. 074-0188

*Public reporting burden for this collection of information is estimated to average 1 hour per response, including the time for reviewing instructions, searching existing data sources, gathering and maintaining the data needed, and completing and reviewing this collection of information. Send comments regarding this burden estimate or any other aspect of this collection of information, including suggestions for reducing this burden to Washington Headquarters Services, Directorate for Information Operations and Reports, 1215 Jefferson Davis Highway, Suite 1204, Arlington, VA 22202-4302, and to the Office of Management and Budget, Paperwork Reduction Project (0704-0188), Washington, DC 20503

1. AGENCY USE ONLY (Leave blank)		2. REPORT DATE October 2000	3. REPORT TYPE AND DATES COVERED Final (15 Sep 97 - 14 Sep 00)	
4. TITLE AND SUBTITLE Role of NF1 and NF2 in Signaling and Transformation			5. FUNDING NUMBERS DAMD17-97-1-7342	
6. AUTHOR(S) Channing J. Der, Ph.D.				
7. PERFORMING ORGANIZATION NAME(S) AND ADDRESS(ES) University of North Carolina Chapel Hill, North Carolina 27599-1350 E-Mail: cjder@med.unc.edu			8. PERFORMING ORGANIZATION REPORT NUMBER	
9. SPONSORING / MONITORING AGENCY NAME(S) AND ADDRESS(ES) U.S. Army Medical Research and Materiel Command Fort Detrick, Maryland 21702-5012			10. SPONSORING / MONITORING AGENCY REPORT NUMBER	
11. SUPPLEMENTARY NOTES				
12a. DISTRIBUTION / AVAILABILITY STATEMENT Approved for Public Release; Distribution Unlimited			12b. DISTRIBUTION CODE	
13. ABSTRACT: Our studies have concentrated on the mechanism by which NF2 may function as a tumor suppressor. We determined that NF2 blocks Ras transformation, in part, by blocking the action of the Rac small GTPase. We then focused our efforts on further assessing the mechanism by which NF2 antagonizes Rac signaling and function. Progress has been made in two main directions. We determined that NF2 can block multiple Rac-mediated signaling activities. This suggests that NF2 inhibition of Rac function is not due to inhibition of a subset of Rac signaling events and argues that NF2 may directly modulate Rac itself. This outcome was an unexpected. Based on an observation by our collaborators, Rac was found to cause phosphorylation of NF2. The consequences of this phosphorylation on NF2 negative modulation of Rac transforming activity was determined. When taken together, these observations may provide a key clue regarding the tumor suppressing function of NF2. Rac function has been found to be necessary for the transforming actions of Ras and other oncoproteins. Therefore, if NF2 is a negative modulator of Rac function, it may serve as a negative modulator of growth regulation by a spectrum of growth promoting signaling proteins.				
14. SUBJECT TERMS NF1, NF2, Ras			15. NUMBER OF PAGES 24	
			16. PRICE CODE	
17. SECURITY CLASSIFICATION OF REPORT Unclassified	18. SECURITY CLASSIFICATION OF THIS PAGE Unclassified	19. SECURITY CLASSIFICATION OF ABSTRACT Unclassified	20. LIMITATION OF ABSTRACT Unlimited	

Cover..... 1

SF 298..... 2

Table of Contents..... 3

Introduction..... 4

Body..... 4

Key Research Accomplishments..... 10

Reportable Outcomes..... 11

Conclusions..... 11

References..... 12

Appendices.....14

Introduction

Although the NF1 and NF2 candidate tumor suppressor genes have been implicated in the development of neurofibromatosis type 1 and 2, respectively, the precise functions of their encoded proteins remain to be elucidated. NF1 encodes neurofibromin, which has been shown to function as a GTPase activating protein (GAP) for the Ras proto-oncogene proteins (1;2). However, there is also evidence that neurofibromin may mediate downstream effector signaling pathways that promote Ras regulation of cellular differentiation (3;3). Whether neurofibromin is an effector of Ras remains to be determined (4). NF2 encodes merlin, a member of the ERM family of proteins that are believed to function in linking cytoskeletal components with membrane proteins. However, little is known concerning merlin function. Like neurofibromin, merlin expression has been shown to antagonize Ras transformation (5). However, how either protein blocks Ras transformation remains poorly understood. Of our tasks outlined in our approved statement of work, progress on this second research aim progressed significantly and the details of these studies are included in a publication in *Developmental Cell* by Shaw et al. 2001 (please see Appendix).

Body

We initiated our studies to evaluate the link between NF1 and NF2 and the Ras oncoprotein (6). Since progress on the study of NF2 was significant, and resulted in unexpected observations, our studies concentrated mainly on the evaluation of NF2 function. These studies verified that NF2 can block the transforming activity of oncogenic Ras and indicated that NF2 inhibition of Rac was the basis of this inhibition. These observations extended our previous work that showed that blocking Rac function could block oncogenic Ras transformation (7).

A. Structural characterization of NF2 antagonism of Rac signaling: role of N- and C-terminal sequences

Our results from the first year determined that NF2 could block Ras and Rac signaling. These studies were done using C-terminal epitope-tagged versions of full length NF2 as well as N-terminal and C-terminal fragments (provided by Dr. Nancy Ratner). However, in light of observations by other investigators that C-terminal manipulation can alter NF2 function, we felt that an important goal was to verify that our detected NF2 activities were not compromised by altered C-terminal function. Using non-epitope-tagged versions of full length (UM), N-terminal (UN), and C-terminal (UC) fragments of NF2, we confirmed our previous observations. Full length NF2 showed strong inhibition of Ras and Rac signaling (Jun activation) and the N-terminal fragment also showed a similar, but reduced, inhibition (Fig. 1). However, whereas our previous analyses found no inhibition by the C-terminus alone, we have seen low, but reproducible, inhibition of Rac signaling with the non-tagged C-terminal fragment. Thus, the inhibition seen with full length NF2 can be attributed primarily to sequences within the N-terminus and C-terminal sequences may contribute to this activity.

A surprising observation from the NF2 inhibition of signaling studies was that NF2 also blocked activated MEK1 stimulation of Elk-1. MEK1 is not expected to activate Elk-1 in a Rac1-dependent fashion. However, since there are a number of observations that activated MEK1 can stimulate signaling pathways aside from direct activation of ERK (to then activate Elk-1), it may reflect the possibility that MEK1 activation of an autocrine pathway that then activates Elk-1 in a Rac1-dependent fashion has occurred. Elk-1 has been shown to be activated by Rac1 via MEK1 in published studies. The possibility that this represented a general growth inhibitory activity of NF2 was eliminated by our failure to see NF2 block the expression of a constitutively-activated luciferase gene expression vector. Also, we found no growth inhibitory activity with full length NF2 or either N- or C-terminal fragments, as assessed by the efficient isolation of stably-transfected NIH 3T3 cells that expressed high levels of each protein.

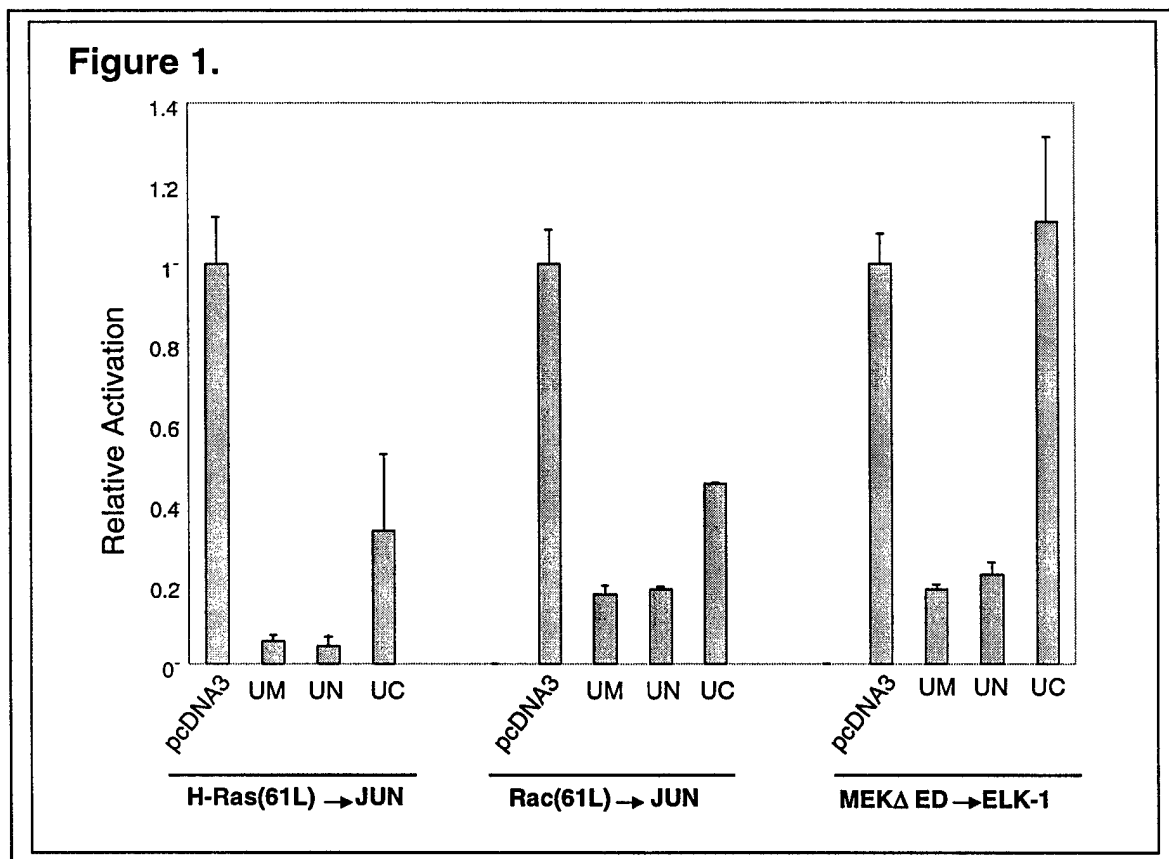


Fig. 1. Merlin antagonizes H-Ras and Rac1 signaling. NIH 3T3 cells were transiently cotransfected with the Gal-Jun or Gal-Elk and 5xGal reporter systems, constitutively activated H-Ras, Rac1 or MEK and NF2. Rac1 has been shown to be an activator of JNK mitogen-activated protein kinases, and JNK activates the Jun transcription factor. Cells were serum starved for 14 hr in 0.5% serum and luciferase activity was measured the following day. Results represent the average of three independent experiments done in duplicate.

Transcriptional activation assays. NIH3T3 cells were transiently transfected via calcium phosphate precipitation with pcDNA 3 NF2 (0.7 μ g), pCGN H-Ras(61L) (10 ng), pCGN-rac(61L) (0.5 μ g), activated pcML MEK Δ ED (20 ng), 5X Gal-luciferase (2.5 μ g) and Gal-Jun and Gal-Elk (0.5 μ g) in 35 mm dishes. Cells were serum starved in 0.5% serum for 14 hr and luciferase activity measured on a luminometer. Relative light units (RLUs) are normalized to Rac(61L) plus empty pcDNA3 plasmid DNA.

In addition to blocking Rac1 activation of Jun, we also found that co-expression of NF2 also blocked Rac1 activation of transcription from the cyclin D1 promoter as well as stimulation of serum response factor (SRF) activation. We showed previously, using Rac1 effector domain mutants, that Rac1 stimulates Jun, cyclin D1, and SRF via distinct effector signaling pathways (8). This general inhibition of Rac1 signaling suggested that NF2 may directly antagonize Rac1 function rather than blocking a signaling pathway downstream of Rac1.

B. NF2 antagonizes Rac transformation

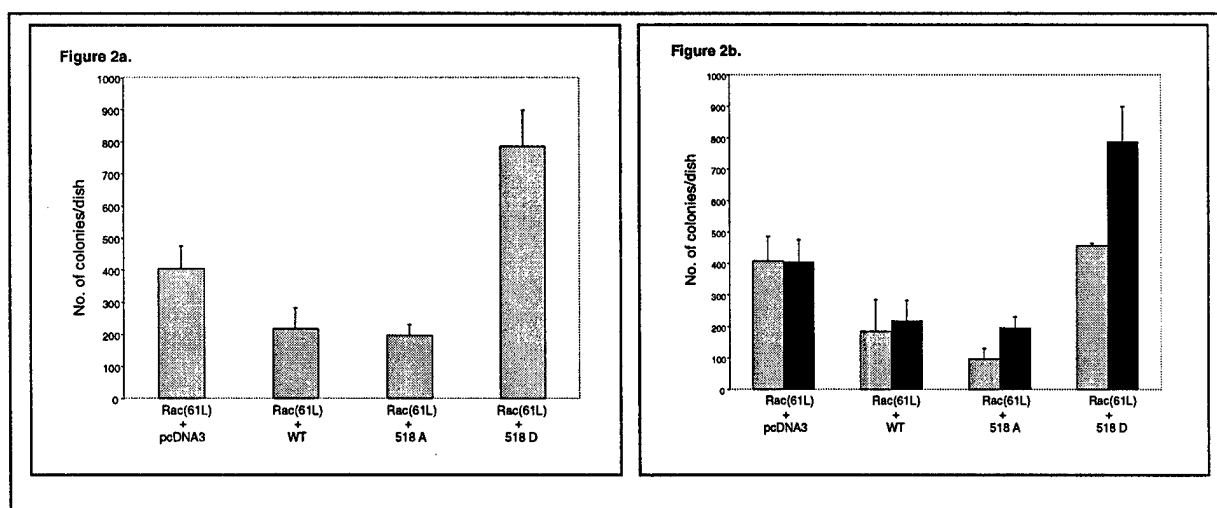


Fig. 2. NF2 antagonizes Rac1-induced tumorigenic transformation. NIH 3T3 cells stably expressing constitutively activated Rac1 and NF2 were assayed for their ability to proliferate under anchorage-independent conditions. Cells were seeded in growth medium containing 0.3% agar and colonies were visualized after 14 days. Results represent (Panel A) the average of two experiments, (Panel B) data from two independent experiments.

Anchorage-independent growth assays. NIH3T3 cells transfected as above were co-selected in 0.4 mg/ml G418 (pcDNA3-NF2) and 0.1 mg/ml hygromycin B (pCGN-rac1(61L)). Stably expressing cells were pooled and seeded at a density of 7.5×10^4 cells per 60 mm dish in DMEM containing 0.3% agar and 10% calf serum. Number of colonies was visualized after 14 days.

We determined that NF2 blocked Ras focus-formation when assayed in NIH 3T3 cells and that NF2 could block Ras and Rac signaling (Fig. 2). These results predicted that NF2 antagonism of Ras was due, in part, to blocking Rac function. To address this possibility, we determined if NF2 could antagonize Rac transforming activity. For these analyses we isolated NIH 3T3 cells stably cotransfected with a constitutively activated

mutant of Rac1 (Q61L) and full length or truncated NF2. The isolated cell lines were first assessed to verify expression of NF2 using anti-NF2 antibody (provided by Dr. A. McClatchey) Western blot analyses (data not shown). No difference in the morphology or the growth rate on plastic was observed for the control Rac1(61L) and the co-transfected cell lines. However, we found that NIH 3T3 cells stably expressing activated Rac1 and NF2 were impaired in their ability to form colonies in soft agar.

During the course of our studies, we established collaborative interactions with Drs. Andrea McClatchey (MGH) and Tyler Jacks (MIT). McClatchey, Jacks and colleagues determined that activated Rac caused tyrosine phosphorylation of NF2. The significance of this phosphorylation event, with regards to NF2 antagonism of Rac, was then determined. The precise phosphorylation site was determined by Jacks and colleagues and this serine residue (S518) was mutated to either an alanine (518A; nonphosphorylatable) or to aspartate (518D; "constitutively phosphorylated"). The working hypothesis was that phosphorylation caused the impairment of the ability of merlin to antagonize Rac transformation. This was based on the observation that conditions that promoted growth cessation (serum deprivation, increased cell density, and loss of adhesion) favored formation of unphosphorylated merlin (Fig. 3). Thus, the substitution of an aspartate to mimic a phosphorylated serine residue was anticipated to create a "constitutively phosphorylated" and inactivated version of merlin. Conversely, the alanine substitution was expected to prevent phosphorylation, and render merlin constitutively active, or at least insensitive to Rac-mediated downregulation. We then determined the ability of these mutants to block Rac transformation.

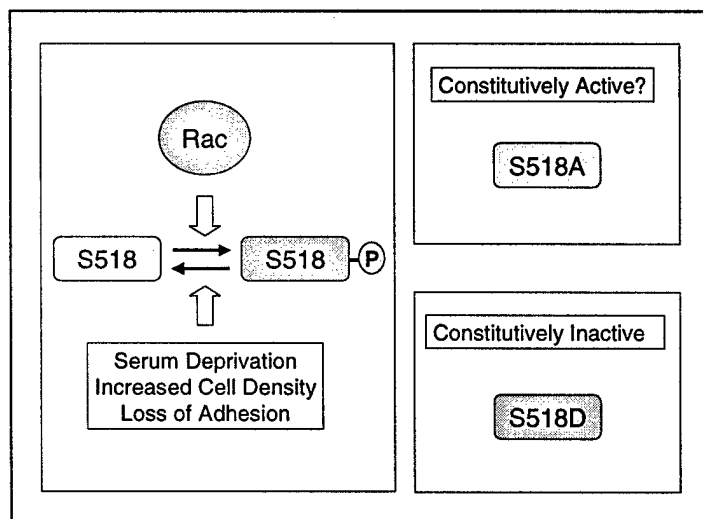


Fig. 3. Phosphorylation regulation of merlin function.

Serum deprivation, increased cell density, and loss of adhesion, conditions that favored growth cessation, also favored formation of unphosphorylated merlin that then served as a tumor suppressor. Since Rac promoted the phosphorylated form, this suggests that Rac can function as a negative regulator of merlin function. Merlin is phosphorylated by Rac at residue S518. Therefore, two mutants of merlin were generated, one that cannot be phosphorylated (S518A) and one that was "constitutively" phosphorylated (S518D).

For these analyses, NIH 3T3 cells were stably co-transfected with plasmid DNA expression vectors encoding activated Rac(61L), either with the empty pcDNA3 vector, or pcDNA3 encoding wild type (WT) or mutated (518A or 518D) NF2. Double drug

selection was done to isolate transfected cell lines harboring both Rac and NF2, pooled together, and assessed for growth in soft agar. Co-expression of wild type or 518A NF2 caused repression of Rac-induced colony formation in soft agar. In contrast, the putative constitutively phosphorylated version, 518D, actually showed enhancement of Rac-mediated transforming activity. These results suggests that Rac1-mediated phosphorylation of NF2 inhibits NF2 ability to block Rac function. These studies, as well as others, are summarized in Shaw *et al.* 2001 (Appendix).

The results of these studies suggest a model whereby Rac functions both as a regulator (phosphorylation and downregulation of NF2 function) and sensor (NF2 negative regulation of Rac transforming activity) (Fig. 4).

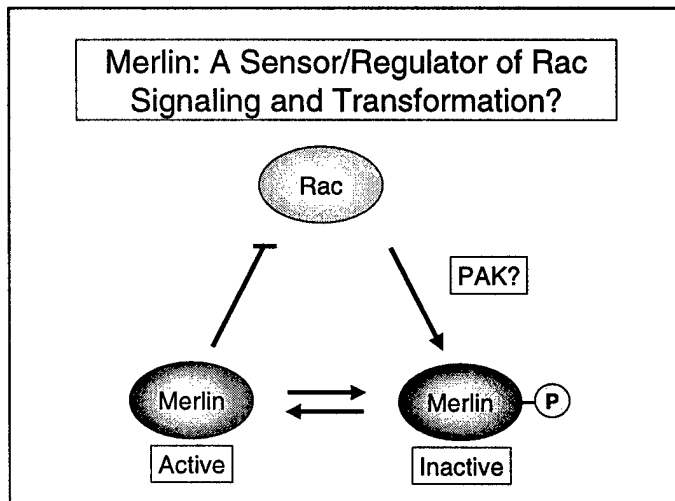


Fig. 4. Merlin can act as a sensor and regulator of Rac signaling and transformation.

Merlin can be phosphorylated by Rac, via a serine/threonine kinase, causing the downregulation of its tumor suppressor function. Based on the studies described below, PAK, a known effector of Rac1, is a candidate for this kinase. Conversely, merlin may act as a negative regulator and impair Rac function. Hence, merlin tumor suppressor function can be mediated in part by inhibiting the function of Rac. How the dynamic merlin:Rac regulatory cycle is regulated temporally remains to be delineated.

C. PAK may mediate Rac phosphorylation of NF2.

Rac can interact with and activate a variety of serine/threonine kinases, including the JNK and p38 mitogen-activated protein kinases (also called stress-activated protein kinases), the PAK family of kinases, the MLK-2/3 kinases, p70 S6 kinase, etc. (Fig. 5). Therefore, we determined what kinase may be involved in Rac-mediated phosphorylation of NF2. For these analyses, we determined the ability of effector domain mutants of activated Rac to cause phosphorylation of NF2 *in vivo*. These mutants of activated Rac1 (12V or 61L) harbor single amino acid substitutions that caused selective impairment in the ability of Rac1 to activate various signaling pathways, including those involved in the activation of p38 and JNK, as well as PAK and p70 S6 kinase (8,11). We found that the ability of the different mutants to cause phosphorylation of NF2 correlated with the ability of Rac1 to cause activation of PAK. For example, the Rac(12V/40H) mutant is impaired in PAK activation (8) and NF2 phosphorylation. In contrast, the Rac(12V/33N) mutant retains the ability to activate PAK (8) and also retained the ability to cause phosphorylation of NF2. These results suggested that Rac1 may cause phosphorylation of NF2 via activation of PAK.

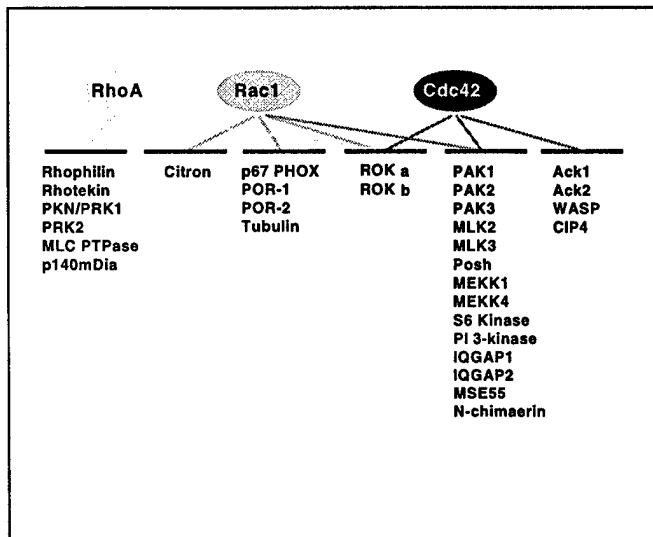


Fig. 5. Rac1 interacts with and activates a variety of serine/threonine kinases. As described above, Rac1 promotes the phosphorylation of S518 in merlin. Rac1 can interact with a variety of kinases that are strong candidates for this kinase. These include the three PAKs, MLK2/3, MEKK1/4, and p70 S6 kinase. An additional possibility is the PI3K lipid kinase, which in turn can cause activation of the Akt serine/threonine kinase. We have described previously mutants of Rac1 that are differentially-impaired in their ability to activate these kinases (8). These mutants may be useful to determine the kinase used by Rac to cause phosphorylation of merlin.

To address directly whether PAK activation alone was sufficient to cause phosphorylation of NF2, we performed analyses with activated forms of PAK. We found that co-expression of activated PAK caused the same appearance of an altered mobility form of NF2, that co-migrated with the Rac-mediated phosphorylated form of NF2. These results, together with the effector domain mutant analyses, supported the possibility that Rac activation of PAK is responsible for phosphorylating and inactivating the tumor-suppressing function of NF2. Our conclusion is supported by two recent observations by other laboratories that PAK can indeed directly interact with and phosphorylate NF2 (12, 13).

Future Directions:

Our observations from these studies have provided a foundation for our future NF2 studies. These research efforts will concentrate on elucidating the mechanism by which NF2 antagonizes Rac function. Our model for this mechanism is shown in Fig. 5. Our current results suggest that NF2 may directly target all Rac function. We will verify this possibility by evaluating whether NF2 will block other Rac functions, such as activation of the NF- κ B transcription factor and the generation of reactive oxygen species. How this is achieved is unclear and elucidating the details of this inhibition will be an important goal of our future studies. The role of Rac-mediated phosphorylation in modulating NF2 inhibition of transformation will be one goal of these studies. For these studies, we have utilized effector domain mutants of activated Rac1 that are impaired in specific downstream signaling functions. Additionally, since we and others have shown previously that Rac1 function is also necessary for the transforming actions of other oncoproteins, it will be important to determine if NF2 can also antagonize their transforming actions. For example, we showed previously that the Mas G protein-coupled receptor and that Vav guanine nucleotide exchange factor cause transformation in a Rac-dependent fashion (9;10). Will NF2 also block Mas and Vav

transforming activity?

The mechanism by which PAK causes phosphorylation of NF2 will also be important to determine. For example, does PAK cause a direct phosphorylation of NF2, or is this indirect and involve another kinase(s)? The observation that Rac1-mediated phosphorylation of PAK correlated with phosphorylation of NF2 is interesting, but puzzling, since we previously determined that Rac1 activation of PAK did not correlate with Rac1 transforming activity, as assessed in NIH 3T3 cells. If Rac-mediated phosphorylation of NF2 is critical for Rac-mediated transformation, we would have expected a direct correlation between these two events. For example, the Rac1(12V40H) mutant is impaired in NF2 phosphorylation, yet this mutant retains potent transforming activity, as measured by focus-formation and soft agar growth, in NIH 3T3 cells. One possible interpretation of these data are that perhaps Rac1-mediated phosphorylation of NF2 does contribute to Rac1 transformation, but this event alone is not sufficient or necessary. This possibility is supported by our previous observations that we can unlink the ability of Rac to activate a variety of mitogenic signaling pathways (e.g., JNK, p70 S6 kinase) from transformation, and that no one signaling pathway has been found to be necessary or sufficient for Rac1 transformation. Clearly, the signaling pathways that promote Rac transformation are complex and more needs to be determined.

Another possible explanation for this result is that cell type differences in the role of NF2 phosphorylation may be seen, such that in human tumors where NF2 loss is critical for oncogenesis, the role of PAK in phosphorylation and inactivation of NF2 may be more critical for Rac1-mediated oncogenesis.

Key Research Accomplishments

- NF2 inhibition of oncogenic Ras transformation of NIH 3T3 rodent fibroblasts – role of both N- and C-terminal sequences in this inhibition were established
- NF2 inhibition of Rac transformation of NIH 3T3 rodent fibroblasts. This result is consistent with our previous observation that inhibition of Rac causes an inhibition of Ras transformation.
- NF2 inhibition of multiple aspects of Rac-mediated signaling (c-Jun and cyclin D1 activation) – these results suggest that NF2 may antagonize Rac itself, rather than a specific downstream signaling pathway activated by Rac.
- Activated Rac causes phosphorylation of NF2 via an effector that may be that PAK serine/threonine kinase – analyses of Rac effector domain mutants showed that one that had lost the ability to activate PAK had also lost the ability to cause phosphorylation of NF2. These implicated PAK as a key connection between Rac1 and NF2
- Activated PAK alone caused phosphorylation of NF2. This result supports the data from the effector domain mutant analyses and suggests that PAK is a key link between Rac1 and NF2.
- Activated PI3K alone caused a partial phosphorylation of NF2. Since PI3K is a lipid kinase, obviously this is not due to a direct interaction between PI3K and NF2. However, since PI3K can activate the Akt serine/theonine kinase,

perhaps Akt can cause direct phosphorylation of NF2.

Reportable Outcomes

Manuscripts:

Shaw, R.J., Paez, J.G., Curto, M., Yaktine, A., Pruitt, W.M., Saotome, I., O'Bryan, J.P., Gupta, V., Ratner, N., Der, C.J., Jacks, T. and McClatchey, A.I. (2001). The Nf2 tumor suppressor, merlin, is a sensor/regulator of Rac-dependent signaling. *Devel. Cell*, 1:63-72.

Abstracts:

Shaw, R.J., Paez, J.G., Curto, M., Yaktine, A., Pruitt, W.M., Saotome, I., O'Bryan, J.P., Gupta, V., Ratner, N., Der, C.J., Jacks, T. and McClatchey, A.I. The Nf2 tumor suppressor, merlin, is a sensor/regulator of Rac-dependent signaling. FASEB Summer Research Conference, July 15-20, 2000, Snowmass, CO (poster presentation)

Presentations:

Mosbacher Kolloquium 2000, German Society for Biochemistry and Molecular Biology Annual Meeting, April 2-5, 2000, Neckar Valley, Germany (Meeting Talk)

The Picower Institute, May 19, 2000, Long Island, NY (Seminar)

FASEB Summer Research Conference, July 15-20, 2000, Snowmass, CO (Meeting talk)

Conclusions

The main conclusion from our studies is that NF2 may function as a tumor suppressor, in part, by blocking the transforming activity of the Rac small GTPase. This observation provides the first evidence for a mechanism of NF2 anti-tumor function. The implication of Rac as a target may have important ramifications since Rac has been implicated in oncogenesis in other studies. For example, we showed previously that Ras transformation required Rac1 function. Therefore, it makes sense that NF2 can inhibit Ras transformation, via inhibition of Rac1 function. Rac1 has also been shown to be required for the transformation activity of a variety of other oncoproteins. Consequently, inhibitors of Rac oncogenesis have already been considered as possible anti-cancer drugs. For example, in our other studies, we are characterizing the possibility that inhibitors of geranylgeranyltransferase I (GGTIs) to block Rac transformation. GGTIs block the posttranslational isoprenoid lipid modification of Rac and prevents Rac membrane association and transformation. Perhaps GGTIs can block the tumor growth of cells that have lost NF2, and hence, have hyperactive Rac function. Obviously, a limitation of our studies is the use of a cell type not involved in NF2-associated

malignancies. Therefore, it remains to be determined whether the role of NF2 in human oncogenesis also involves Rac1 activation. Thus, it will be important to extend these observations to human NF2-deficient tumor cells to evaluate whether Rac1 activation is hyperactivated by the loss of NF2, and whether inhibition of Rac function, for example using the Rac1 S17N dominant negative mutant, will impair the growth of NF2-deficient human tumor cells.

Personnel Involved in Studies

John P. O'Bryan, Ph.D.
Wendy M. Pruitt, Ph.D.
Que Lambert

Collaborators:

Andrea McClatchey, Ph.D. (MGH)
Tyler Jacks, Ph.D. (MIT)
Nancy Ratner, Ph.D. (U. Cinn.)

References

1. **Martin, G. A., D. Viskochil, G. Bollag, P. C. McCabe, W. J. Crosier, H. Haubruck, L. Conroy, R. Clark, P. O'Connell, R. M. Cawthon, M. A. Innis, and F. McCormick.** 1990. The GAP-related domain of the neurofibromatosis type 1 gene product interacts with *ras* p21. *Cell* **63**:843-849.
2. **Xu, G., P. O'Connell, D. Viskochil, R. Cawthon, M. Robertson, M. Culver, D. Dunn, J. Stevens, R. Gesteland, R. White, and R. Weiss.** 1990. The neurofibromatosis type 1 gene encodes a protein related to GAP. *Cell* **62**:599-608.
3. **Johnson, M. R., J. E. DeClue, S. Felzmann, W. C. Vass, G. Xu, R. White, and D. R. Lowy.** 1994. Neurofibromin can inhibit Ras-dependent growth by a mechanism independent of its GTPase-accelerating function. *Mol.Cell.Biol.* **14**:641-645.
4. **Fridman, M., A. Tikoo, M. Varga, A. Murphy, M. S. A. Nur-E-Kamal, and H. Maruta.** 1994. The minimal fragments of c-Raf-1 and NF1 that can suppress v-Ha-Ras-induced malignant phenotype. *J.Biol.Chem.* **269**:30105-30108.
5. **Tikoo, A., M. Varga, V. Ramesh, J. Gusella, and H. Maruta.** 1994. An anti-Ras function of neurofibromatosis type 2 gene product (NF2/Merlin). *J.Biol.Chem.* **269**:23387-23390.
6. **Shields, J. M., Pruitt, K., McFall, A., Shaub, Der, and C.J.** 2000. Understanding Ras: "it ain't over 'til it's over". *Trends Cell Biol.* **10**:147-153.
7. **Zohn, I. M., S. L. Campbell, R. Khosravi-Far, K. L. Rossman, and C. J. Der.** 1998. Rho family proteins and Ras transformation: the RHOad less traveled gets congested. *Oncogene* **17**:1415-1438.
8. **Westwick, J. K., Q. T. Lambert, G. J. Clark, M. Symons, L. Van Aelst, R. G. Pestell, and C. J. Der.** 1997. Rac regulation of transformation, gene expression,

- and actin organization by multiple, PAK-independent pathways. *Mol.Cell Biol.* **17**:1324-1335.
9. **Khosravi-Far, R., M. Chrzanowska-Wodnicka, P. A. Solski, A. Eva, K. Burridge, and C. J. Der.** 1994. Vav and Dbl mediate transformation via Ras-independent mitogen activated protein kinase activation. *Mol.Cell.Biol.* **14**:6848-6857.
 10. **Zohn, I. E., M. Symons, M. Chrzanowska-Wodnicka, J. K. Westwick, and C. J. Der.** 1998. Mas oncogene signaling and transformation require the small GTP-binding protein Rac. *Mol.Cell Biol.* **18**:1225-1235.
 11. **Lambert, J.M., Karnoub, A., Graves, L.M., Campbell, S.L. and Der, C.J.** 2002. Rac activation of p70 S6 kinase is mediated by MLK-3 and is dispensable for Rac transformation. *J. Biol. Chem.*, **277**:4770-4777.
 12. **Xiao, G.H, Beeser, A, Chernoff, J., Testa, J.R.** 2002. p21-activated kinase links Rac/Cdc42 signaling to merlin. *J. Biol. Chem.* **277**:883-886.
 13. **Kissil, J.L., Johnson, K.C., Eckman M.S., Jacks, T.** 2002. Merlin Phosphorylation by p21-activated kinase 2 and effects of phosphorylation on merlin localization. *J. Biol. Chem.* **277**:10394-9

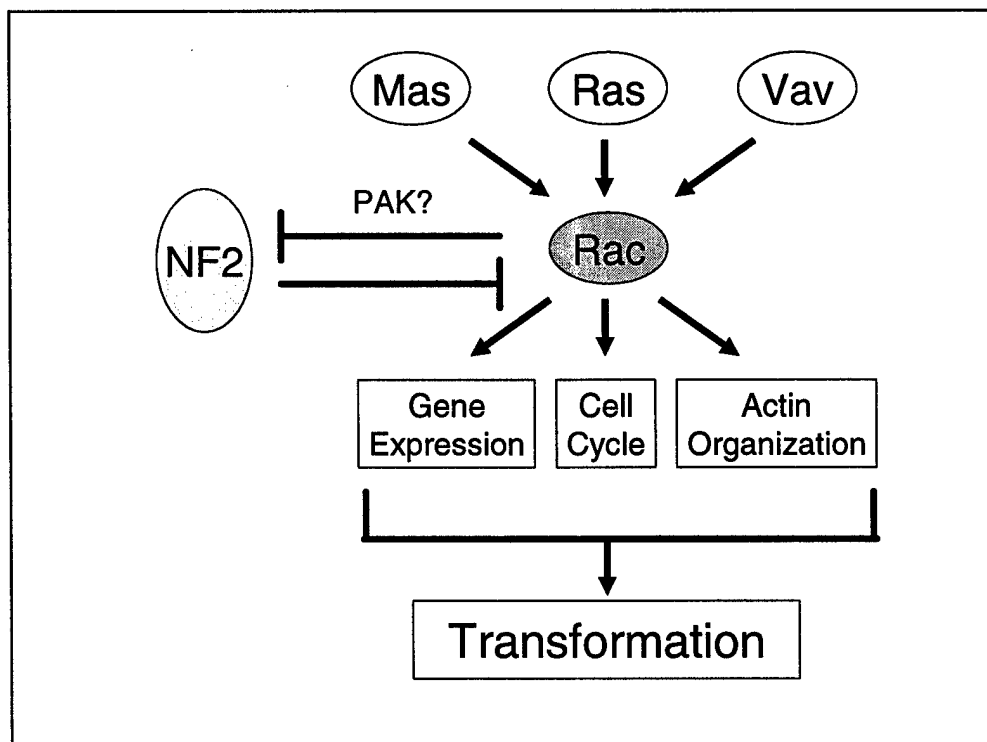


Fig. 6. NF2 antagonism of Rac1- a general mechanism of growth inhibition by antagonizing multiple regulators of cell proliferation? We showed previously that Rac1 is required for Ras, Mas and Vav transforming activity. Mas is a novel G protein-coupled receptor that causing transformation by activation of Rac. Vav is a guanine nucleotide exchange factor that activates Rac1, as well as two related GTPases, Cdc42 and RhoA. We have shown that NF2 can antagonize Rac1 and Ras transforming activity. These observations argue that NF2 will also block the growth promoting actions of Mas and Vav. Whereas NF2 can block Rac function, Rac-mediated phosphorylation of NF2 may prevent NF2 inhibition of Rac function. Thus, we propose a model where NF2 and Rac1 can mutually antagonize each others function, but Rac1 can escape NF2 inhibitory activity by causing its phosphorylation. In light of the diverse cellular functions of Rac1, involving the regulation of gene expression, cell cycle progression and growth, and actin cytoskeletal organization, the loss of NF2-mediated inhibition of Rac1 function can certainly contribute to aberrant Rac1-mediated oncogenesis. Finally, based on our analyses of Rac effector domain mutants, as well as activated PAK, we suggest that PAK is a kinase that may promote Rac1-mediated phosphorylation and inactivation of NF2.

Appendices

Shaw, R.J., Paez, J.G., Curto, M., Yaktine, A., Pruitt, W.M., Saotome, I., O'Bryan, J.P., Gupta, V., Ratner, N., Der, C.J., Jacks, T. and McClatchey, A.I. The Nf2 tumor suppressor, merlin, is a sensor/regulator of Rac-dependent signaling. *Devel. Cell*, 1:63-72.

The *Nf2* Tumor Suppressor, Merlin, Functions in Rac-Dependent Signaling

Reuben J. Shaw,^{1,6,7} J. Guillermo Paez,^{2,7}
Marcello Curto,² Ann Yaktine,²
Wendy Morse Pruitt,³ Ichiko Saotome,²
John P. O'Bryan,³ Vikas Gupta,¹ Nancy Ratner,⁴
Channing J. Der,³ Tyler Jacks,¹
Andrea I. McClatchey^{2,5}

¹Department of Biology and
Center for Cancer Research and
Howard Hughes Medical Institute
Massachusetts Institute of Technology
Cambridge, Massachusetts 02139

²MGH Cancer Center and
Harvard Medical School Department of Pathology
Charlestown, Massachusetts 02129

³Department of Pharmacology
Lineberger Comprehensive Cancer Center
University of North Carolina at Chapel Hill
Chapel Hill, North Carolina 27599

⁴Department of Cell Biology, Neurobiology,
and Anatomy
College of Medicine
University of Cincinnati
Cincinnati, Ohio 45267

Summary

Mutations in the neurofibromatosis type II (*NF2*) tumor suppressor predispose humans and mice to tumor development. The study of *Nf2*^{-/-} mice has demonstrated an additional effect of *Nf2* loss on tumor metastasis. The *NF2*-encoded protein, merlin, belongs to the ERM (ezrin, radixin, and moesin) family of cytoskeleton:membrane linkers. However, the molecular basis for the tumor- and metastasis-suppressing activity of merlin is unknown. We have now placed merlin in a signaling pathway downstream of the small GTPase Rac. Expression of activated Rac induces phosphorylation and decreased association of merlin with the cytoskeleton. Furthermore, merlin overexpression inhibits Rac-induced signaling in a phosphorylation-dependent manner. Finally, *Nf2*^{-/-} cells exhibit characteristics of cells expressing activated alleles of Rac. These studies provide insight into the normal cellular function of merlin and how *Nf2* mutation contributes to tumor initiation and progression.

Introduction

Neurofibromatosis type 2 (NF2) is a familial cancer syndrome that features the development of tumors of the

nervous system, particularly schwannomas and meningiomas (Gutmann et al., 1997). The disease is caused by inherited mutation of the *NF2* tumor suppressor gene; sporadically occurring tumors of these types frequently exhibit inactivation of both *NF2* alleles. In addition, *NF2* mutations are found in malignant mesotheliomas (Gusella et al., 1999). Mice heterozygous for an *Nf2* mutation are predisposed to developing osteosarcomas, fibrosarcomas, and hepatocellular carcinomas that have lost the wild-type *Nf2* allele. Strikingly, most tumors arising in *Nf2*^{+/-} mice metastasize, which sharply contrasts with the generally rare incidence of metastasis in the mouse. Indeed, experimental evidence supports a role for *Nf2* loss in metastatic progression (McClatchey et al., 1998).

The *NF2*-encoded protein, merlin, is highly related to the cytoskeleton:membrane linking proteins ezrin, radixin, and moesin (the ERM proteins). Although the function of the ERM proteins is not well understood, the study of merlin function has largely paralleled that of the ERMs (reviewed in Bretscher et al., 2000). There are important distinctions and similarities between merlin and the ERMs. Merlin and the ERM proteins share similar subcellular localization to regions of dynamic cytoskeletal remodeling such as membrane ruffles, actin-containing microspikes, and the cleavage furrow (Gusella et al., 1999). All four proteins interact with membrane-associated partners via an amino-(N)-terminal domain and with cytoskeletal components via a carboxyl-(C)-terminal domain (Bretscher et al., 2000). However, the ERMs interact directly with actin via a domain that is not conserved in merlin. In fact, the ERM proteins are more closely related to each other than to merlin. Merlin does share binding partners with the ERM proteins, including the hyaluronic acid receptor CD44, NHE-RF/EBP50, and RhoGDI (Sainio et al., 1997; Murthy et al., 1998; Maeda et al., 1999). However, the functional consequences of interaction of the ERMs or merlin with these proteins remains unclear.

The membrane:cytoskeletal linking activity of the ERM proteins appears to be regulated through intra- and perhaps intermolecular association of their N- and C-terminal domains (Bretscher et al., 2000). Phosphorylation and phospholipid binding weaken self-association of the ERM proteins, stimulating their ability to link membrane proteins and F-actin into dynamic actin structures such as microvilli, membrane ruffles, and uropods (Bretscher et al., 2000). Recent studies suggest that merlin is also regulated by self-association, and can form homo- and heterodimers with ERM family members (Sherman et al., 1997; Huang et al., 1998; Gronholm et al., 1999; Nguyen et al., 2000).

Recently, we and others have shown that the small GTPase RhoA is an important regulator of the ERM proteins. The Rho family of GTPases affects reorganization of the actin cytoskeleton and regulates such cellular activities as motility, invasiveness, and proliferation through the regulation of several signaling pathways (for review see Zohn et al., 1998; Van Aelst and D'Souza-Schorey, 1997). RhoA activity was found to be necessary and sufficient for the phosphorylation of a conserved

⁵Correspondence: mcclatch@helix.mgh.harvard.edu

⁶Present address: Division of Signal Transduction, Beth Israel Deaconess Medical Center, and Department of Cell Biology, Harvard Medical School, 330 Brookline Avenue, Boston, Massachusetts 02115

⁷These authors contributed equally to this work.

residue (T558 in moesin) in the F-actin binding domain of the ERM proteins and the subsequent formation of ERM-containing apical microvilli (Shaw et al., 1998a; Matsui et al., 1998; Oshiro et al., 1998). Phosphorylation of T558 inhibits the association of the N- and C-terminal domains of moesin in vitro, unmasking its F-actin and membrane protein binding potential (Matsui et al., 1998; Simons et al., 1998; Huang et al., 1999). Both Rho-kinase and phosphatidylinositol 4-phosphate 5-kinase have been implicated in affecting this activation of the ERM proteins in vivo (Matsui et al., 1999). Importantly, while the sequence surrounding this site is well conserved in all three ERM proteins, it is quite distinct in merlin.

Merlin is also phosphorylated on serine/threonine residues in response to a variety of conditions in culture (Shaw et al., 1998b). The simplest interpretation of the available data is that phosphorylation inactivates merlin. High levels of a hypophosphorylated form of merlin are associated with conditions of growth arrest by serum deprivation, increased cell density, and loss of adhesion. Interestingly, these are all conditions under which Rho GTPase signaling is downregulated (Kjoller and Hall, 1999; Ren et al., 1999). Given the links between RhoA and ERM phosphorylation, merlin phosphorylation and growth control, and loss of merlin function leading to metastatic tumors in mice, we have investigated whether merlin is also regulated by members of the Rho family of GTPases. In this study, we find that merlin is targeted by and is a regulator of the Rac/Cdc42-pathway, providing a framework for understanding how merlin normally functions as a tumor and metastasis suppressor.

Results

Merlin Is Phosphorylated in a Rac/Cdc42-Dependent Manner

By SDS-PAGE, merlin migrates as a doublet, representing hyper- and hypophosphorylated forms of the protein (Shaw et al., 1998b). Phosphoamino acid analysis and two-dimensional phosphopeptide mapping experiments revealed that merlin is phosphorylated at multiple sites, predominantly on serine residues, but also on at least one threonine residue (Shaw et al., 1998b; see Supplemental Figure S1 at <http://www.developmental.com/cgi/content/full/11/1/63/DC1>). To address whether Rho GTPase activation affects merlin phosphorylation, NIH3T3 cells were transfected with wild-type merlin and either activated or dominant-negative alleles of the Rho family members RhoA, Rac1, and Cdc42Hs. Importantly, the pattern of phosphorylation of exogenous merlin under various conditions in culture is comparable to that of endogenous merlin (see Figure 1A, first two lanes; Shaw et al., 1998b). For example, in serum-starved cells (Figure 1A, second lane) the ratio of the faster migrating, hypophosphorylated form to the hyperphosphorylated form of exogenous merlin is high. Strikingly, while coexpression of activated Rho did not significantly affect merlin phosphorylation, expression of two different activated alleles of Rac (RacV12, RacL61) strongly increased it. An activated allele of Cdc42 (Cdc42V12) also induced merlin phosphorylation (Figure 1A), which may reflect the activity of a common effector pathway or the

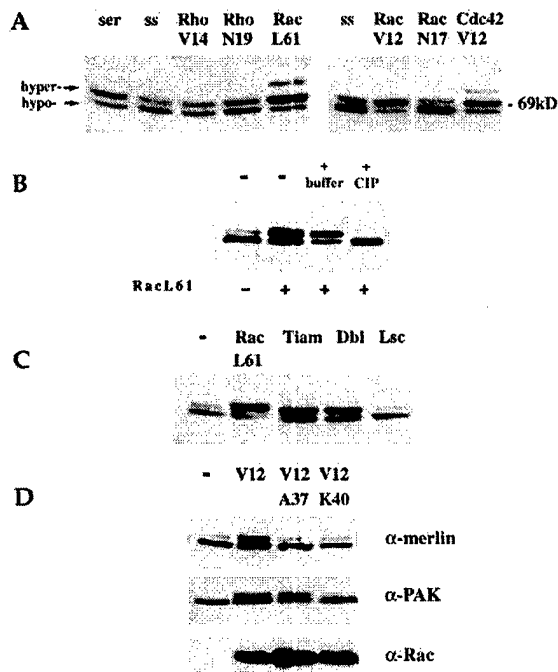


Figure 1. Activation of Rac or Cdc42, but Not Rho, Induces Merlin Hyperphosphorylation

(A) Wild-type merlin was transiently transfected with or without myc-tagged activated and dominant negative alleles of Rac, Rho, or Cdc42, as indicated, in NIH3T3 cells, then analyzed by immunoblotting with anti-merlin (sc331) antisera. All GTPases were expressed in serum-starved cells. First and second lanes show merlin phosphorylation in cycling (ser) and serum starved (ss) cells. Equivalent levels of activated and dominant negative GTPases were confirmed by anti-myc immunoblotting (data not shown).

(B) Wild-type HA-merlin was transfected with activated Rac, immunoprecipitated with anti-HA antisera, and treated with calf intestinal phosphatase (CIP), with CIP buffer alone or boiled in sample buffer as indicated. Merlin was detected by anti-HA immunoblotting.

(C) Wild-type merlin was transfected with Tiam1, Dbl, Lsc, or activated Rac as indicated and analyzed as above.

(D) Wild-type merlin or HA-tagged Pak1 were transfected with Rac effector mutants. Merlin was analyzed as above; Pak1 hyperphosphorylation resulting in a mobility shift detected by anti-HA immunoblotting indicates that RacV12A37 but not RacV12C40 activates Pak1.

sequential activation of Rac by Cdc42 (Nobes and Hall, 1995). A third merlin species with even slower mobility was also noted in the presence of activated Rac or Cdc42; this band may represent a super-phosphorylated form of merlin. Phosphatase treatment of immunoprecipitated merlin from Rac-transfected cells demonstrated that the Rac-induced mobility shift is due to phosphorylation (Figure 1B).

To examine whether activation of endogenous GTPases modulates merlin phosphorylation, merlin was transfected with members of the Dbl family of guanine nucleotide exchange factors (GEFs), each of which activates a subset of Rho GTPases in vivo. For example, Dbl activates Rac, Rho, and Cdc42 while Tiam-1 and Lsc are specific activators of Rac and Rho, respectively (Van Aelst and D'Souza-Schorey, 1997). As shown in Figure 1C, overexpression of either Tiam-1 or Dbl induced merlin phosphorylation, while expression of Lsc

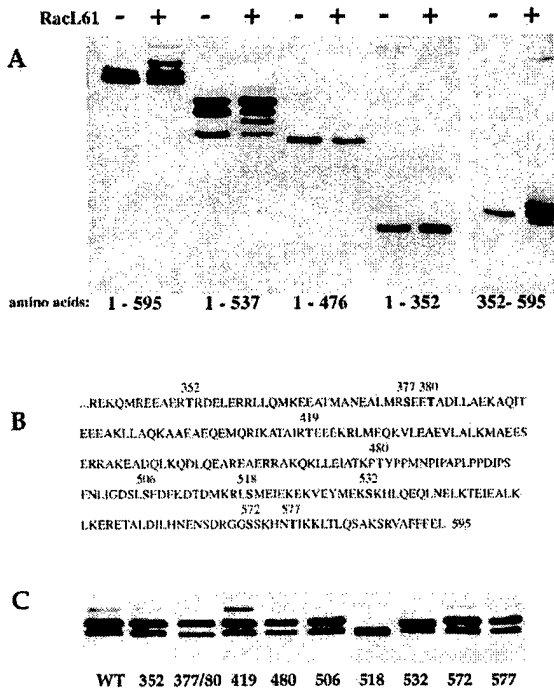


Figure 2. Identification of Rac-Dependent Phosphorylation Sites

(A) A series of HA-tagged merlin truncations were transfected with and without activated Rac and analyzed by immunoblotting. Residues contained within each truncation are indicated below the corresponding lanes.

(B) Amino acid sequence of the C-terminal half of merlin, with serine or threonine residues matching known kinase phosphorylation motifs or conserved in *Drosophila* numbered above the sequence.

(C) Potential phosphorylation sites were mutated individually (or in the case of 377 and 380, in combination), to alanine in the context of full-length HA-tagged merlin. These constructs were then transfected with activated Rac and analyzed by immunoblotting.

had no effect (Figure 1C). These results suggest that activation of endogenous Rac, and perhaps Cdc42, can mediate merlin phosphorylation.

Many serine/threonine kinases are known to be activated by Rac and/or Cdc42, and are thus candidates for mediating the effect of Rac activation on merlin phosphorylation (Aspenstrom, 1999). However, neither of two well-characterized Rac effector mutants (RacV12A37, RacV12K40) was capable of stimulating merlin phosphorylation (Figure 1D). As most known Rac effector pathways can be activated by one of these two effector mutants (Westwick et al., 1997; Lamarche et al., 1996; Jones et al., 1996), this result suggests that multiple effector pathways are required for merlin hyperphosphorylation or that an uncharacterized pathway that is dependent upon both amino acids 37 and 40 of Rac is responsible for this effect.

Identification of Rac-Induced Phosphorylation Sites

To identify Rac-induced sites of phosphorylation in merlin, we transfected activated Rac with a series of epitope-tagged merlin truncation mutants and examined their phosphorylation by electrophoretic mobility shift (Figure 2A). As described previously, the N-terminal half

of merlin (residues 1–352) migrates as a single species (Shaw et al., 1998c); activated Rac had no additional effect on the mobility of this fragment. In contrast, the C-terminal half of merlin (residues 352–595) migrates as a doublet; introduction of activated Rac increased the amount of the upper species. Further deletion mapping narrowed the Rac-responsive region to residues 476–537 (Figure 2A). Orthophosphate labeling experiments revealed that although both the N- and C-terminal halves of merlin are phosphorylated in serum-starved cells, the introduction of activated Rac leads to increased incorporation of radioactive label in the C-terminal half only (data not shown). These data suggest that while there may be many phosphorylation sites in merlin, the Rac-responsive site(s) lie in the C-terminal half.

Within this region are ten serine/threonine residues, eight of which are surrounded by consensus kinase recognition motifs (Figure 2B). Each candidate residue was individually mutated to alanine in the context of the full-length molecule and transfected with and without activated Rac, to determine whether loss of any one site could affect Rac-dependent phosphorylation. As shown in Figure 2C, conversion of T577 to alanine did not effect basal or Rac-induced merlin phosphorylation; T577 is analogous to T558 of moesin, which is a target of RhoA-induced phosphorylation (Matsui et al., 1998, 1999). This is consistent with our observation that Rho activation had no effect on merlin phosphorylation. Instead, mutation of S518 had an appreciable effect on Rac-stimulated phosphorylation. In fact, the S518A mutant is not phosphorylated in response to serum and migrates as a single species. Orthophosphate labeling and phosphopeptide mapping experiments revealed that while the S518A mutant is still phosphorylated in cells, prominent phosphopeptides are absent (see Supplemental Figure S1). A synthetic peptide containing residue S518, but not one containing a S518A substitution, can be phosphorylated *in vitro* in a Rac-dependent manner, indicating that S518 is phosphorylated directly (J. Kissil and T.J., unpublished data).

Effect of S518 Phosphorylation on Merlin Function

We next investigated whether Rac-induced phosphorylation of merlin regulates its activity. Phosphorylation of the ERM proteins inhibits self-association and promotes their ability to link membrane and cytoskeletal partners. Thus, we investigated the effect of Rac-dependent phosphorylation on the ability of the N- and C-terminal halves of merlin to interact. First, the epitope-tagged, N-terminal half of merlin was transfected into NIH3T3 cells together with untagged versions of either full-length merlin or the C-terminal half. Immunoprecipitation of the N-terminal portion followed by immunoblotting for the C-terminal half revealed the association of the two (Figure 3A). Mutation of S518 to aspartic acid, which is predicted to mimic phosphoserine, inhibited the interaction of either the full-length or C-terminal forms of merlin with the N-terminal half. In contrast, mutation of S518 to alanine in the context of either the full-length or C-terminal half of merlin resulted in a stronger association with the N-terminal half. These data imply that the S518A mutant is not stably “closed” and therefore unavailable for interaction with the HA-N-terminal portion. This idea is supported by the recent demonstration

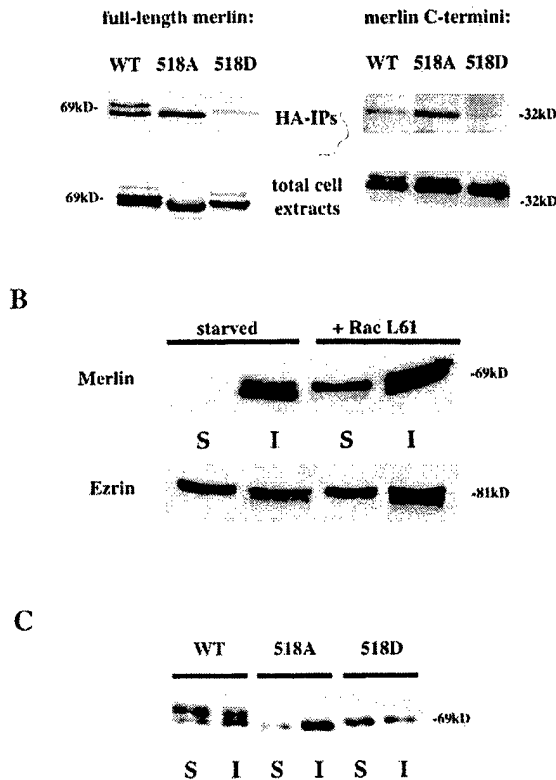


Figure 3. Rac Regulates the Intramolecular and Cytoskeletal Association of Merlin

(A) Untagged full-length or C-terminal merlin fragments were transfected with HA-tagged N-terminal merlin. Bound merlin was visualized by immunoprecipitation with anti-HA-antisera and immunoblotting with anti-merlin antisera directed against the final 20 amino acids of the protein (sc332). Five percent of the total cell extracts were immunoblotted to confirm equivalent expression of wild-type and mutant merlin isoforms. Control experiments indicate that merlin is not nonspecifically associating with the HA-antisera or protein A beads (data not shown).

(B) HA-tagged merlin or HA-tagged ezrin was transfected with or without activated Rac into NIH3T3 cells, which were then serum-starved. Triton X-100 soluble and insoluble fractions were then prepared and analyzed by anti-HA immunoblotting.

(C) Full-length wild-type, S518A- or S518D-expressing plasmids were transfected into NIH3T3 cells in 15% serum; Triton X-100 soluble and insoluble fractions were prepared and analyzed by immunoblotting with an anti-merlin antibody.

that association of the N- and C-terminal halves of merlin is a weaker and more dynamic interaction than that of the ERM proteins (Nguyen et al., 2000). We also examined these interactions directly by mixing ³⁵S-labeled in vitro-translated versions of full-length merlin with the HA-tagged N-terminal half of merlin and immunoprecipitating using anti-HA antisera; these experiments gave similar results (data not shown). These data suggest that phosphorylation of S518 disrupts merlin self-association, and perhaps oligomerization.

Given the distinct localization of merlin to areas of dynamic actin reorganization and its potential to interact with membrane and cytoskeleton proteins, localization is likely to be critical for its function. Thus, we examined the effect of Rac-dependent phosphorylation on the detergent-solubility of merlin. In serum-starved cells both

hyper- and hypophosphorylated merlin species were found in the detergent insoluble fraction (Figure 3B). When activated Rac was introduced, a significant amount of hyperphosphorylated merlin appeared in the soluble fraction. In contrast, activated Rac had no effect on ezrin solubility (Figure 3B). Consistent with this observation, examination of the detergent-solubility of expressed full-length S518A and S518D mutants revealed the relative insolubility of S518A and solubility of S518D compared to wild-type (Figure 3C). Together, these results suggest that Rac-induced phosphorylation of merlin weakens both its head-to-tail interaction and association with the cytoskeleton.

Overexpression of Merlin Blocks Rac-Mediated Transformation and Signaling

Overexpression of activated Rac can transform fibroblasts in vitro, and Rac activity is required for Ras-induced transformation (Khosravi-Far et al., 1995; Qiu et al., 1995). It has been previously reported that merlin overexpression can block Ras-induced transformation (Tikoo et al., 1994). We have confirmed this result and also examined the ability of merlin to block Rac-induced anchorage-independent growth in soft agar as a measure of transformation. We found that full-length merlin efficiently inhibited Rac-induced colony formation in this assay (Figure 4A).

We next examined the effect of merlin overexpression on signaling pathways that are activated downstream of Rac. A major downstream target of Rac is activation of the *c-jun*-N-terminal kinase (JNK) (Coso et al., 1995; Minden et al., 1995). We measured the effect of merlin overexpression on endogenous JNK activity by transfecting fibroblasts with full-length merlin along with a GFP-expressing plasmid. We analyzed basal JNK activity specifically in the transfected cells by fluorescence-activated cell sorting (FACS) and replating of the GFP-expressing cells. The levels of JNK activity were measured using an antibody that specifically recognizes phosphorylated (active) JNK. We found that merlin overexpression significantly reduced the level of phosphorylated JNK in cycling cells (Figure 4B, middle). Under these conditions, merlin overexpression had a negligible effect on the levels of phosphorylated extracellular regulated kinase (ERK) in these cells (Figure 4B, bottom).

A well-established consequence of JNK activation is increased activity of the AP-1 transcription factor, composed of heterodimeric combinations of *jun* and *fos* family members (Ip and Davis, 1998). After first ascertaining that merlin could also specifically block Rac-induced AP-1 activity, we asked whether this ability was dependent on merlin's phosphorylation state (Figure 4C). Our studies of merlin phosphorylation predict that hypophosphorylated merlin is the active, tumor suppressor form of the protein and that hyperphosphorylation inactivates it. To link merlin phosphorylation to its ability to block Rac signaling, we asked whether phosphorylation-defective (S518A) or phosphorylation-mimicking (S518D) forms of merlin could also block Rac-induced signaling. Strikingly, we found that while the S518A mutant inhibited Rac-induced activation of AP-1 reporter activity as well or better than the wild-type protein, S518D was clearly compromised in its ability to block Rac-induced signaling relative to wild-type (Figure

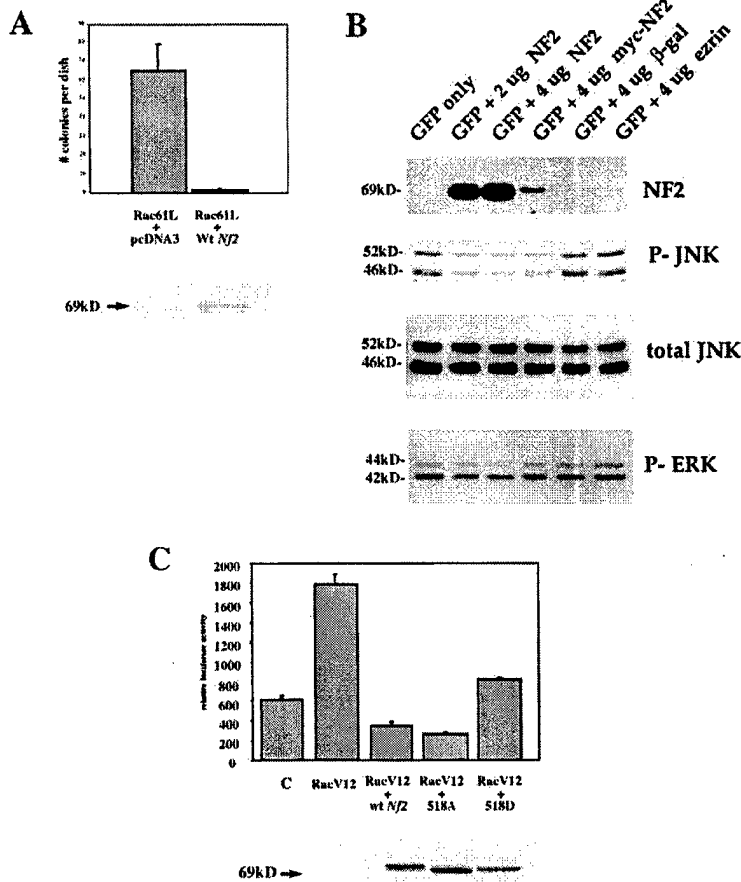


Figure 4. Merlin Inhibits Rac-Dependent Transformation and Signaling

(A) NIH3T3 cells stably expressing activated Rac with or without wild-type merlin were assayed for their ability to proliferate under anchorage-independent conditions. Cells were seeded in growth medium containing 0.3% agar, and colonies were visualized and quantitated after 14 days (top). Total cell lysates were immunoblotted using anti-merlin (sc331) or anti-Rac antisera to ensure expression of wild-type merlin (bottom) and Rac (data not shown). Experiment shown is representative of three independent experiments done in triplicate.

(B) Immortalized fibroblasts were transfected with a GFP-expression plasmid, with or without untagged or myc-tagged wild-type merlin, lacZ, or HA-tagged ezrin. GFP-positive cells were isolated by FACS and replated in 15% serum for 24 hr prior to harvesting. Total cell lysates were then immunoblotted with anti-merlin (sc331), anti-phospho-JNK, anti-phospho-ERK, or anti-JNK antibodies as indicated.

(C) Cells were transfected with the AP-1 reporter plasmid with or without an EF1 α -GST-RacV12 expression plasmid and 50 ng of wild-type or mutant merlin expression plasmid, as indicated. Total cell lysates were immunoblotted with anti-merlin (sc331; below) or anti-GST (not shown) antibodies.

4C). Immunoblotting confirmed that equivalent levels of wild-type and mutant merlin protein were expressed in these cells (Figure 4C). These results are consistent with the possibility that Rac-induced phosphorylation inactivates merlin.

Examination of Rac-Dependent Signaling in *Nf2*-Deficient Fibroblasts

Given a link between Rac signaling and merlin phosphorylation and regulation, we wanted to examine the integrity of Rac signaling in the absence of *Nf2*. We previously generated a *Nf2* mutant strain of mice and found that *Nf2* homozygous mutant embryos fail at gastrulation, precluding the isolation of embryo-derived fibroblasts directly (McClatchey et al., 1997). Therefore, we generated primary *Nf2*^{-/-} fibroblasts from chimeric embryos composed of both wild-type and *Nf2*^{-/-} cells (see Experimental Procedures). In addition, several spontaneously immortalized fibroblast lines were generated for each genotype; these cells were used where indicated.

First, we compared the levels of phosphorylated (active) JNK in wild-type and *Nf2*^{-/-} fibroblasts by Western blot analysis. As shown in Figure 5A (left), we found that basal JNK activity was elevated approximately 4-fold in cycling *Nf2*^{-/-} fibroblasts and was further induced upon stimulation with serum or UV treatment. The same results were obtained by kinase assay (Figure 5A, right) and in *Nf2*^{-/-} ES cells (data not shown).

To determine whether AP-1 activity was also upregulated in these cells, we introduced an AP-1 luciferase reporter into wild-type and *Nf2*^{-/-} immortalized fibroblasts. As seen in Figure 5B, basal AP-1 activity was indeed increased in *Nf2*^{-/-} fibroblasts. Moreover, reintroduction of *Nf2* expression into *Nf2*^{-/-} fibroblasts resulted in a dose-dependent decrease in basal AP-1 activity to the levels of wild-type cells (Figure 5C). Taken together these results support the conclusion that loss of merlin function is responsible for deregulated AP-1 activity in *Nf2*^{-/-} cells.

In nearly every cell system examined, Rac plays a central role in the formation of membrane ruffles during cell spreading, cell motility, and growth factor stimulation (reviewed in Kjøller and Hall, 1999). To address the effects of merlin deficiency on this classic cytoskeletal response, we plated primary fibroblasts on coverslips and examined cell spreading by immunostaining for F-actin and the ERM proteins, which highlight the dynamic cortical cytoskeleton. In contrast to wild-type cells, at one hour post-plating, *Nf2*^{-/-} cells demonstrated prominent membrane ruffles rich in F-actin and ERM proteins (Figure 6A). At this time point, wild-type cells exhibited abundant apical microvilli, but few peripheral membrane ruffles. Notably, in addition to membrane ruffles, increased vesicles are also seen in the *Nf2*^{-/-} cells (see Figure 6A). Both of these phenotypes are observed in cells overexpressing activated Rac (Van Aelst and D'Souza-Schorey, 1997).

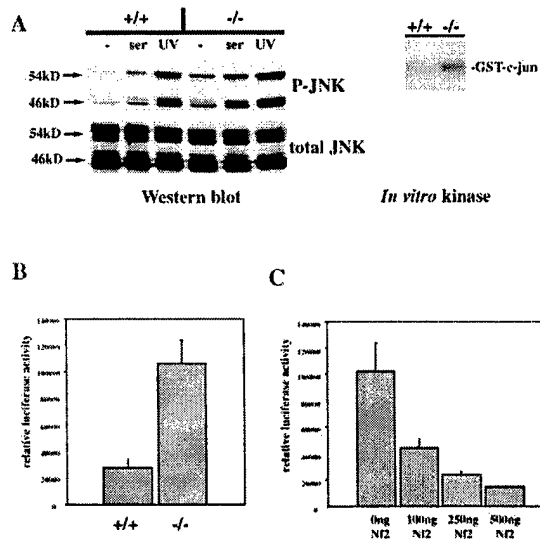


Figure 5. *Nf2* Deficient Fibroblasts Show Increased JNK and AP-1 Activity

(A) Cycling immortalized wild-type and *Nf2*^{-/-} fibroblasts were stimulated with serum or UV (80 J) for 30 min. Levels of activated JNK were evaluated by immunoblotting using an antibody that recognizes phosphorylated JNK (left). The corresponding levels of total JNK are shown below. In vitro kinase assay (right) yielded similarly elevated basal JNK activity in *Nf2*^{-/-} cells.

(B) An AP-1 luciferase reporter was transfected into wild-type and *Nf2*^{-/-} immortalized fibroblasts and basal luciferase activity was measured.

(C) The same AP-1 reporter was transfected into *Nf2*^{-/-} fibroblasts alone or with 50, 100, 250, or 500 ng of wild-type *Nf2* expression plasmid and resulting luciferase activity was measured. The data shown in (B) and (C) are representative of twelve independent experiments carried out using four different immortalized cell lines.

To examine whether *Nf2*-deficiency affected Rac-mediated cytoskeletal changes in another setting, we "scrape-wounded" confluent monolayers of wild-type and *Nf2*^{-/-} primary fibroblasts with a plastic pipette tip and then treated them with PDGF. As shown in Figure 6B, fifteen minutes after wounding and PDGF treatment, dramatic membrane ruffling was seen at the leading edge of the wounded *Nf2*^{-/-} monolayer. At this time point, wild-type cells at the leading edge of the "wound" displayed little membrane ruffling.

A positive role for Rac signaling in cell motility is well established. The link between merlin function and Rac signaling together with the metastatic nature of murine *Nf2*^{-/-} tumors suggested that *Nf2*-deficient cells may have enhanced motility. Thus, monolayers of wild-type and *Nf2*^{-/-} MEFs growing in serum were wounded and followed by phase contrast microscopy over the next 36 hr (Figure 6C). Strikingly, *Nf2*^{-/-} cells migrated to close the wound approximately two to three times as fast as wild-type cells (~15 vs ~36 hr). Similarly, *Nf2*^{-/-} immortalized fibroblasts migrate faster than wild-type fibroblasts in transwell chamber assays (data not shown). A recent analysis of the function of Rho GTPases in wound-healing of fibroblast monolayers revealed that while Rho activity was needed to maintain adhesion, Rac and Cdc42 activity were more critical in

promoting motility (Nobes and Hall, 1999). Therefore, the behavior of *Nf2*-deficient cells is most consistent with increased Rac- or Cdc42-dependent motility.

Discussion

Cloning of the *NF2* gene several years ago revealed that its encoded protein, merlin, is a member of a family of cytoskeleton:membrane linkers whose function is not well understood. Thus, merlin occupies an intriguing subcellular location for a tumor suppressor. The generation and study of *Nf2*-mutant mice confirmed its role as a tumor suppressor and suggested an additional role as a metastasis suppressor (McClatchey et al., 1998). Nevertheless, the molecular basis for the growth suppressing function of merlin remains elusive. We now provide several lines of evidence linking merlin function to signaling by the small GTPase Rac. Given the large body of evidence linking Rac activation to cell transformation, cell motility and invasion, these results suggest a mechanism whereby merlin exerts its tumor and metastasis suppressing activities.

Our results indicate that merlin is regulated by Rac. Although phosphopeptide mapping experiments indicate that merlin phosphorylation is complex (see Supplemental Figure S1), the existing data suggest that Rac-induced phosphorylation inactivates merlin. Phosphorylation of the Rac-responsive S518 residue inhibits merlin self-association, weakens its association with the cytoskeleton, and compromises its ability to inhibit Rac-mediated signaling. This suggests that the closed or oligomerized form of merlin is the active, growth suppressing form. This is consistent with the observations of Gutmann and colleagues, who found that the same amino acid residues necessary for self-association were also required for the growth- and motility- suppressing function of merlin in schwannoma cells (Sherman et al., 1997; Gutmann et al., 1999). Importantly, Rac is activated by growth factor stimulation and matrix adhesion, conditions which also stimulate endogenous merlin phosphorylation (reviewed in Kjøller and Hall, 1999; Shaw et al., 1998b). Our finding that merlin is phosphorylated in response to activation of Rac/ Cdc42 and not Rho would indicate that merlin and the ERMs are regulated in distinct ways. Together with the observation that merlin can heterodimerize with ERM proteins (Gronholm et al., 1999; Huang et al., 1998), this suggests that this family of proteins could serve to coordinate the activities of these GTPases.

The observation that merlin is phosphorylated in response to Rac activation might have suggested that merlin is an effector of Rac and thus required for some downstream functions of Rac. Instead, our results are consistent with a model wherein merlin normally acts to attenuate Rac signaling. First, overexpression of merlin inhibits JNK activity as well as Rac-induced AP-1 activity and transformation. Second, *Nf2*-deficient cells exhibit phenotypes that are consistent with hyperactivation of Rac signaling including increased activation of JNK, AP-1, membrane ruffling, and motility. Notably, a recent study also demonstrated that overexpression of merlin inhibited cell spreading and motility (Gutmann et al., 1999). Together these observations are consistent with a

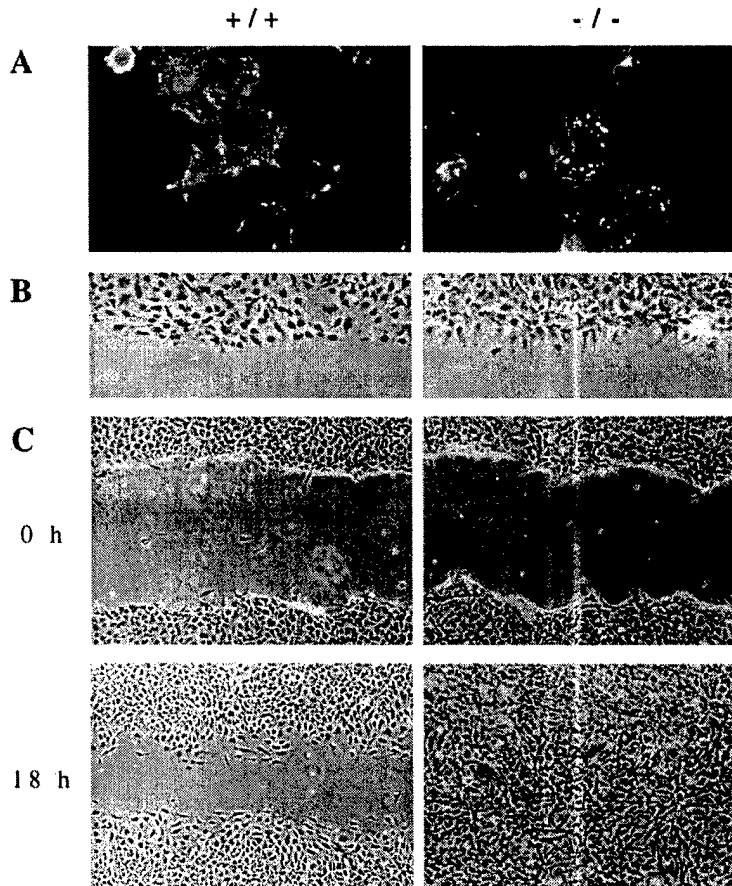


Figure 6. *Nf2*-Deficient Cells Exhibit Increased Ruffling in Response to PDGF and Substrate Reattachment and Exhibit Increased Rates of Migration during Wound Healing

(A) Serum-starved primary fibroblasts were plated on glass coverslips and fixed 1 hr post-plating. Cells were then processed for immunocytochemistry using a pan-ERM antibody to detect endogenous ERM protein localization. The ERM proteins are particularly concentrated in membrane ruffles in the *Nf2*^{-/-} fibroblasts.

(B) Monolayers of wild-type and *Nf2*^{-/-} primary fibroblasts were wounded and treated with 6 ng/ml PDGF. Increased protrusive ruffling is observed in the *Nf2*^{-/-} cells.

(C) Monolayers of wild-type and *Nf2*^{-/-} primary fibroblasts in full serum were wounded and examined by phase contrast microscopy for the next 36 hr. Photos shown were taken at the time points indicated. *Nf2*^{-/-} cells closed the wound 2–3× faster than their wild-type counterparts. Results shown are representative of three independent experiments.

model in which merlin functions as a sensor of Rac signaling. Phosphorylation of merlin in response to Rac activation or other stimuli inactivates merlin, thereby potentiating Rac signaling; dephosphorylation would restore its inhibitory function. This type of mechanism is analogous to the "feed-forward" mechanism of cell cycle progression established via inactivation of the cell cycle inhibitor p27 by cyclin-dependent kinase 2 (cdk2)-dependent phosphorylation and subsequent degradation (Vlach et al., 1997).

Several recent reports have demonstrated that the ERM proteins can similarly both regulate the activity of RhoA and be regulated by phosphorylation downstream of RhoA. As described above, RhoA-induced phosphorylation of the ERM C terminus is necessary and sufficient for the formation of apical microvilli (Matsui et al., 1999; Oshiro et al., 1998; Shaw et al., 1998a). Conversely, a role for the ERM proteins upstream of the Rho GTPases has emerged from several studies (Takahashi et al., 1998; Lamb et al., 2000). In fact, the ERM proteins can directly bind to RhoGDI and Dbl, negative and positive regulators, respectively, of Rho GTPases (Takahashi et al., 1997, 1998). Thus the ERM proteins may serve to localize regulators of the GTPases to particular sites of action at the membrane.

We propose that merlin functions as a tumor and metastasis suppressor through its ability to inhibit Rac-dependent signaling. Human *NF2* patients are predisposed to developing Schwann cell tumors while *Nf2*^{+/-}

mice develop a variety of metastatic cancers. Although little is known about the function of Rho GTPases in Schwann cells, human schwannoma cells exhibit actin cytoskeleton defects consistent with increased activity of these GTPases (Pelton et al., 1998). It is well established that Rac activity is necessary and sufficient for transformation of several other cell types (Zohn et al., 1998). In addition, a large body of literature indicates that Rac activity controls cell motility and invasion. For example, the Rac exchange factor Tiam-1 was identified in a screen designed to identify genes that promote cell invasion in vivo (Habets et al., 1994). In addition, several studies in normal and tumor cells have found that Rac is a critical determinant of cell motility and invasion (Keely et al., 1997; Shaw et al., 1997; Nobes and Hall, 1999). Finally, NIH3T3 cells expressing activated Rac display increased metastatic potential when injected into mice (del Peso et al., 1997).

The mechanism by which Rac causes transformation or affects cell motility is not known; however, multiple downstream targets are likely required for the full transforming properties of Rac (Joneson et al., 1996; Lamarque et al., 1996; Westwick et al., 1997). For example, AP-1, a key target of Rac signaling, plays an important role in cell proliferation and cellular invasion. Known AP-1 targets include members of the matrix metalloproteinase family, which have been repeatedly linked to the process of tumor metastasis, suggesting a mechanism by which *Nf2* loss leads to metastatic tumor formation

(Ip and Davis, 1998). Alternatively, *Nf2* loss may alter the function of its direct membrane binding partner CD44, whose function has been linked to metastatic progression of a wide variety of human tumors (Sherman et al., 1994). These two hypotheses are not mutually exclusive. Indeed, CD44 ligation can activate Rac under certain conditions, perhaps via direct interaction with the Rac-specific exchange factor Tiam-1 (Oliferenko et al., 2000; Bourguignon et al., 2000). Thus by directly binding CD44 and negatively regulating Rac signaling and AP-1 transcription, merlin may be uniquely poised to negatively regulate tumor metastasis.

Our data do not define the mechanism by which merlin controls Rac signaling. Extensive mutational analysis of Rac suggests that the downstream effector pathways controlling cytoskeletal and transcriptional responses are distinct. Given that overexpression of merlin effects both (Figure 5, Gutmann et al., 1999), and both are deregulated in *Nf2*-deficient cells (Figures 5 and 6), merlin may act to modulate Rac directly, or to modulate the activity of one of its enzymatic regulators. We have been unable to detect appreciably elevated levels of active Rac-GTP in *Nf2*^{-/-} cells by measuring the amount of (active) Rac-GTP bound to its effector Pak (data not shown; Bagrodia et al., 1998; del Pozo et al., 2000). This may be due to subtle changes in Rac activity coupled with the relative insensitivity of this assay or to the fact that merlin actually functions downstream of Rac as suggested by the data in Figure 4. In fact, like the ERM proteins, merlin can also bind to RhoGDI (Maeda et al., 1999). One possibility is that merlin controls the subcellular localization of Rac or RhoGDI. We have not detected alterations in the subcellular distribution of either Rac or RhoGDI in *Nf2*^{-/-} fibroblasts by crude cell fractionation; however, a higher resolution analysis is necessary before this hypothesis can be ruled out.

It is likely that merlin normally controls Rac signaling in a context-dependent manner, an idea that is supported by the relatively modest elevation of JNK activity in *Nf2*^{-/-} cells (Figure 5A). Interestingly, a recent study demonstrated that JNK activation by UV and serum is inhibited by cell confluence (Lallemand et al., 1998). Disruption of the actin cytoskeleton reversed this effect, suggesting cytoskeleton-based, confluence-sensitive regulation of JNK. Because merlin levels and phosphorylation are also regulated by cell confluence (Shaw et al., 1998b); merlin is therefore a candidate to mediate this effect. In fact, we have found that *Nf2*^{-/-} fibroblasts are not contact inhibited, growing to an extremely high saturation density and forming a multilayer rather than a monolayer (our unpublished data).

These studies suggest that the molecular basis for the tumor and metastasis suppressing function of merlin is at least partly due to its ability to negatively regulate Rac signaling. This, in turn, suggests many potential avenues of research and allows us to consider potential therapeutic strategies targeted specifically to Rac signaling. For example, Rac is posttranslationally modified by geranylation (Adamson et al., 1992). Thus, by analogy to the use of farnesyltransferase inhibitors to block post-translational modification of Ras, newly developed geranylgeranyltransferase inhibitors may show efficacy in slowing or preventing tumorigenesis and metastasis in *Nf2*^{+/-} mice, and ultimately in treating tumors in NF2

patients (Sebti and Hamilton, 2000). Finally, these studies also provide a broad link to the role of the membrane-cytoskeleton interface in tumor development and progression.

Experimental Procedures

Cell Culture

NIH3T3 cells (ATCC) were grown in DMEM plus 10% calf serum (Hyclone). To generate primary *Nf2*^{-/-} fibroblasts, we utilized *lacZ*⁺/*Nf2*^{-/-}, and *lacZ*⁺/*Nf2*^{+/-} embryonic stem (ES) cell lines generated de novo from blastocysts isolated from ROSA26;*Nf2*^{+/-} intercrosses (McClatchey et al., 1997). ES cells of each genotype were used to generate chimeric embryos by blastocyst injection. Embryonic fibroblasts harvested from E12.5 chimeric embryos were expanded and selected in G418 (400 µg/ml) to obtain pure populations of each genotype. Each *Nf2* mutant allele as well as the ROSA26 transgene contains a single copy of the *neo*^R gene. Multiple ES cell lines of each genotype were used for each experiment. After one passage in selection an aliquot of cells was taken for PCR analysis and lacZ staining to determine whether selection was complete (McClatchey et al., 1997). Primary cells were used between passages 4 and 8. Spontaneously immortalized cells were also generated using the 3T9 protocol (Todaro and Green, 1963).

For wounding assays, a pipette tip (p20) was used to scrape a monolayer wound; 6 ng/ml of PDGF was added immediately at the time of wounding. For UV treatment, growing cells were treated with 80J UV-C (Stratalinker; Stratagene) after rinsing with PBS. Following treatment, fresh media was placed back on the cells for the time indicated (30 min).

Antibodies

sc331 and sc332 antibodies (Santa Cruz) were used at 1:100 to detect merlin by immunoblotting. Anti-P-JNK, P-ERK, and ERK antisera were all purchased from New England Biolabs and used according to manufacturer's recommendations. Anti-JNK and anti-GST antisera were purchased from Santa Cruz. Anti-HA (12CA5) and anti-Rac antisera were purchased from Boehringer Mannheim and UBI, respectively. Anti-ERM antisera (CR-22) was provided by S. Tsukita.

Plasmids

Merlin truncations were generated by PCR amplification of the specified coding region using oligonucleotides containing flanking Sal I restriction sites. These PCR products were ligated into the Sal I site of the previously described HA-modified pCDNA3 or pCI-Neo (Shaw et al., 1998c). Site-directed mutagenesis of merlin and Rac was performed using the Quickchange kit (Stratagene) according to manufacturer's instruction. Each mutant was sequenced in its entirety. pEBG-RacV12 was supplied by J. Blenis (Chou and Blenis, 1996). All other GTPase and merlin constructs were previously described (Shaw et al., 1998a, c). CMV-Lsc and CMV-Dbl were supplied by J. Glaven and R. Cerione (Glaven et al., 1999). CMV-Tiam1 was supplied by C. Carpenter. CMV-HA-hPAK1 was supplied by J. Chant (Brown et al., 1996). AP-1 (7X), SRF, CMV-lacZ, and TK-renilla luciferase reporters were purchased from Stratagene.

Transcriptional Reporters

Nf2^{-/-} and wild-type immortalized cells were transiently transfected using Lipofectamine Plus (LTI) according to manufacturer's instructions. Cells were transfected with the indicated amount of reporter, a GFP expression plasmid to monitor transfection efficiency, a TK-renilla luciferase plasmid, and, where indicated, untagged wild-type, S518A or S518D merlin, and/or GST-RacV12 expression vectors. Dual luciferase quantitation was determined using kits from Promega.

Indirect Immunofluorescence

Cells plated on glass coverslips were rinsed in PBS and fixed in cold 3.7% paraformaldehyde for 15 min. Cells were then permeabilized in 0.2% Triton X-100 for 10 min and processed for indirect immunofluorescence as previously described (Shaw et al., 1998c).

Protein Analysis

Total cell lysates were made by washing cells in PBS, followed by addition of boiling SDS-lysis buffer (10 mM Tris 7.5, 1% SDS, 50 mM NaF, 1 mM NaVO₃) to the plate. Protein concentration was calculated using the BCA assay (Pierce) and Western analysis was performed as previously described (Shaw et al., 1998b).

Phosphorylation Analysis

NIH3T3 cells seeded at a density of $\sim 0.2 \times 10^6$ per 60 mm plate were transfected using Lipofectamine Plus (LI) according to the manufacturer's instructions. Cells were placed in DMEM without serum 18 hr later. Six hours later, cells were washed in PBS and lysed in boiling SDS lysis buffer. Phosphatase treatment, orthophosphate labeling, and detergent extraction analysis were performed as previously described (Shaw et al., 1998a).

In Vitro Kinase Assays

Kinase assays were performed essentially as described (Hibi et al., 1993). Briefly, total JNK immunoprecipitated with an anti-JNK antibody and protein A agarose beads (Pierce) was pelleted and resuspended in 30 μ l kinase buffer with 5 μ g GST-c-Jun (Santa Cruz), 20 μ l ATP, and 5 μ Ci [γ -³²P]ATP and incubated at 30°C for 20 min. Samples were resolved by SDS-PAGE, transferred to Immobilon-P (Millipore), and subject to autoradiography.

Merlin Self-Association Assays

NIH3T3 cells were transfected with 3 μ g of each construct per 60 mm plate and lysed in cold NP40 lysis buffer (50 mM Hepes [pH 7.5], 150 mM NaCl, 1% NP40, 50 mM NaF, 0.5 mM EDTA, 1 mM Pefabloc and Complete protease inhibitors [Boehringer Mannheim]). After pelleting insoluble material, lysates were precleared for 1 hr with Protein A-Sepharose (PAS) beads alone. After pelleting, supernatants were added to 50 μ l of premixed 12CA5/PAS beads and incubated at 4°C for 2 hr with rocking. Bound material was pelleted and washed 3 \times with NP40 lysis buffer prior to boiling in sample buffer.

Anchorage-Independent Growth Assays

NIH3T3 cells transfected as described were selected in 0.4 mg/ml G418 (pCDNA3 NF2) and 0.1 mg/ml hygromycin B (pCGN Rac1L61). Stably expressing cells were pooled and seeded at a density of 7.5×10^4 cells per 60 mm dish in DMEM containing 0.3% agar and 10% calf serum. Colony number was visualized after 14 days.

Acknowledgments

The authors thank Jeff Settleman, Karen Cichowski, and Spyros Artavanis-Tsakonas for helpful suggestions on the manuscript and throughout the course of this study. We thank John Chant, Judith Glaven, Richard Cerione, Chris Carpenter, and John Blenis for kindly supplying plasmids, and Sachiro Tsukita for the generous gift of CR22 anti-ERM antisera. A.I.M was supported by a Burroughs Wellcome Career Development Award, the National Neurofibromatosis Foundation, the Medical Foundation/Harcourt Charitable Trust, and the American Cancer Society (RPG0031601) during the course of these studies.

Received April 19, 2000; revised April 27, 2001.

References

Adamson, P., Marshall, C.J., Hall, A., and Tilbrook, P.A. (1992). Post-translational modification of p21rho proteins. *J. Biol. Chem.* 267, 20033-20038.

Aspenstrom, P. (1999). Effectors for the Rho GTPases. *Curr. Opin. Cell Biol.* 11, 95-102.

Bagrodia, S., Taylor, S.J., Jordan, K.A., Van Aelst, L., and Cerione, R.A. (1998). A novel regulator of p21-activated kinases. *J. Biol. Chem.* 273, 23633-23636.

Bourguignon, L.Y., Zhu, H., Shao, L., and Chen, Y.W. (2000). CD44 interaction with tiam1 promotes Rac1 signaling and hyaluronic acid-mediated breast tumor cell migration. *J. Biol. Chem.* 275, 1829-1838.

Bretscher, A., Chambers, D., Nguyen, R., and Reczek, D. (2000). ERM-merlin and EBP50 protein families in plasma membrane organization and function. *Ann. Rev. Cell Dev. Biol.* 16, 113-143.

Brown, J.L., Stowers, L., Baer, M., Trajo, J., Coughlin, S., and Chant, J. (1996). Human Ste20 homologue hPAK1 links GTPases to the JNK, MAP kinase pathway. *Curr. Biol.* 6, 598-605.

Chou, M.-M., and Blenis, J. (1996). The 70kDa S6 kinase complexes with and is activated by the Rho family G proteins Cdc42 and Rac1. *Cell* 85, 573-583.

Coso, O.A., Chiariello, M., Yu, J.C., Teramoto, H., Crespo, P., Xu, N., Miki, T., and Gutkind, J.S. (1995). The small GTP-binding proteins Rac1 and Cdc42 regulate the activity of the JNK/SAPK signaling pathway. *Cell* 81, 1137-1146.

del Peso, L., Hernandez-Alcoceba, R., Embade, N., Camero, A., Esteve, P., Paje, C., and Lacal, J.C. (1997). Rho proteins induce metastatic properties in vivo. *Oncogene* 15, 3047-3057.

del Pozo, M.A., Price, L.S., Alderson, N.B., Ren, X.D., and Schwartz, M.A. (2000). Adhesion to the extracellular matrix regulates the coupling of the small GTPase Rac to its effector PAK. *EMBO J.* 19, 2008-2014.

Glaven, J.A., Whitehead, I., Bagrodia, S., Kay, R., and Cerione, R.A. (1999). The Dbl-related protein, Lfc, localizes to microtubules and mediates the activation of Rac signaling pathways in cells. *J. Biol. Chem.* 274, 2279-2285.

Gronholm, M., Sainio, M., Zhao, F., Heiska, L., Vaheri, A., and Carpen, O. (1999). Homotypic and heterotypic interaction of the neurofibromatosis 2 tumor suppressor protein merlin and the ERM protein ezrin. *J. Cell Sci.* 112, 895-904.

Gusella, J.F., Ramesh, V., MacCollin, M., and Jacoby, L. (1999). Merlin: the neurofibromatosis 2 tumor suppressor. *Biochem. Biophys. Acta* 1423, M29-36.

Gutmann, D.H., Aylsworth, A., Carey, J.C., Korf, B., Marks, J., Pyeritz, R.E., Rubenstein, A., and Viskochil, D. (1997). The diagnostic evaluation and multidisciplinary management of neurofibromatosis 1 and neurofibromatosis 2. *JAMA* 278, 51-57.

Gutmann, D.H., Sherman, L., Seftor, L., Haipke, C., Hoang Lu, K., and Hendrix, M. (1999). Increased expression of the NF2 tumor suppressor gene product, merlin, impairs cell motility, adhesion and spreading. *Hum. Mol. Genet.* 8, 267-275.

Habets, G.G., Schoftes, E.H., Zuydgest, D., van der Kammen, R.A., Stam, J.C., Berns, A., and Collard, J.G. (1994). Identification of an invasion-inducing gene, Tiam-1, that encodes a protein with homology to GDP-GTP exchangers for Rho-like proteins. *Cell* 77, 537-549.

Hibi, M., Lin, A., Smeal, T., Minden, A., and Karin, M. (1993). Identification of an oncoprotein- and UV-responsive protein kinase that binds and potentiates the c-Jun activation domain. *Genes & Dev.* 7, 2135-2148.

Huang, L., Ichimaru, E., Pestonjamas, K., Cui, X., Nakamura, H., Lo, G.Y., Lin, F.I., Luna, E.J., and Furthmayr, H. (1998). Merlin differs from moesin in binding to F-actin and in its intra- and intermolecular interactions. *Biochem. Biophys. Res. Commun.* 248, 548-553.

Huang, L., Wong, T.Y., Lin, R.C., and Furthmayr, H. (1999). Replacement of Threonine 558, a Critical Site of Phosphorylation of Moesin in Vivo, with Aspartate activates F-actin Binding of Moesin. Regulation by conformational change. *J. Biol. Chem.* 274, 12803-12810.

Ip, Y.T., and Davis, R.J. (1998). Signal transduction by the c-Jun N-terminal kinase (JNK)- from inflammation to development. *Curr. Opin. Cell Biol.* 10, 205-219.

Joneson, T., McDonough, M., Bar-Sagi, D., and Van Aelst, L. (1996). RAC regulation of actin polymerization and proliferation by a pathway distinct from Jun kinase. *Science* 274, 1374-1376. Erratum: *Science* Apr 11;276, 1997.

Keely, P.J., Westwick, J.K., Whitehead, I.P., Der, C.J., and Parise, L.V. (1997). Cdc42 and Rac1 induce integrin-mediated cell motility and invasiveness through PI(3)K. *Nature* 390, 632-636.

Khosravi-Far, R., Solski, P.A., Clark, G., Kinch, M., and Der, C. (1995). Activation of Rac1, RhoA, and Mitogen-Activated Protein Kinases is required for Ras transformation. *Mol. Cell. Biol.* 15, 6443-6453.

- Kjoller, L., and Hall, A. (1999). Signaling to Rho GTPases. *Exp. Cell Res.* 253, 166-179.
- Lallemant, D., Ham, J., Garbay, S., Bakiri, L., Traincard, F., Jeannequin, O., Pfarr, C.M., and Yaniv, M. (1998). Stress-activated protein kinases are negatively regulated by cell density. *EMBO J.* 17, 5615-5626.
- Lamarche, N., Tapon, N., Stowers, L., Burbelo, P.D., Aspenstrom, P., Bridges, T., Chant, J., and Hall, A. (1996). Rac and Cdc42 induce actin polymerization and G1 cell cycle progression independently of p65PAK and the JNK/SAPK MAP kinase cascade. *Cell* 87, 519-529.
- Lamb, R.F., Roy, C., Diefenbach, T.J., Vinters, H.V., Johnson, M.W., Jay, D.G., and Hall, A. (2000). The TSC1 tumour suppressor hamartin regulates cell adhesion through ERM proteins and the GTPase Rho. *Nat. Cell Biol.* 2, 281-287.
- Maeda, M., Matsui, T., Imamura, M., Tsukita, S., and Tsukita, S. (1999). Expression level, subcellular distribution and rho-GDI binding affinity of merlin in comparison with Ezrin/Radixin/Moesin proteins. *Oncogene* 18, 4788-4797.
- Matsui, T., Maeda, M., Doi, Y., Yonemura, S., Amano, M., Kaibuchi, K., Tsukita, S., and Tsukita, S. (1998). Rho-kinase phosphorylates COOH-terminal threonines of ezrin/radixin/moesin (ERM) proteins and regulates their head-to-tail association. *J. Cell Biol.* 140, 647-657.
- Matsui, T., Yonemura, S., Tsukita, S., and Tsukita, S. (1999). Activation of ERM proteins in vivo by Rho involves phosphatidylinositol 4-phosphate 5-kinase and not ROCK kinases. *Curr. Biol.* 9, 1259-1262.
- McClatchey, A.I., Saotome, I., Mercer, K., Crowley, D., Gusella, J.F., Bronson, R.T., and Jacks, T. (1998). Mice heterozygous for a mutation at the Nf2 tumor suppressor locus develop a range of highly metastatic tumors. *Genes Dev.* 12, 1121-1133.
- McClatchey, A.I., Saotome, I., Ramesh, V., Gusella, J.F., and Jacks, T. (1997). The Nf2 tumor suppressor gene product is essential for extra embryonic development immediately prior to gastrulation. *Genes Dev.* 11, 1253-1265.
- Minden, A., Lin, A., Claret, F., Abo, A., and Karin, M. (1995). Selective activation of the JNK signaling cascade and c-Jun transcriptional activity by the small GTPases Rac and Cdc42Hs. *Cell* 81, 1147-1157.
- Murthy, A., Gonzalez-Agosti, C., Cordero, E., Pinney, D., Candia, C., Solomon, F., Gusella, J., and Ramesh, V. (1998). NHE-RF, a regulatory cofactor for Na(+)-H+ exchange, is a common interactor for merlin and ERM (MERM) proteins. *J. Biol. Chem.* 273, 1273-1276.
- Nguyen, R., Reczek, D., and Bretscher, A. (2000). Hierarchy of merlin and ezrin N- and C-terminal domain interactions in homo- and heterotypic associations and their relationship to binding of scaffolding proteins EBP50 and E3KARP. *J. Biol. Chem.*, in press.
- Nobes, C.D., and Hall, A. (1995). Rho, rac, and cdc42 GTPases regulate the assembly of multimolecular focal complexes associated with actin stress fibers, lamellipodia, and filopodia. *Cell* 81, 53-62.
- Nobes, C.D., and Hall, A. (1999). Rho GTPases Control Polarity, Protrusion, and Adhesion during Cell Movement. *J. Cell Biol.* 144, 1235-1244.
- Oliifrenko, S., Kaverina, I., Small, J.V., and Huber, L.A. (2000). Hyaluronic acid (HA) binding to CD44 activates rac1 and induces lamellipodia outgrowth. *J. Cell Biol.* 148, 1159-1164.
- Oshiro, N., Fukata, Y., and Kaibuchi, K. (1998). Phosphorylation of moesin by rho-associated kinase (Rho-kinase) plays a crucial role in the formation of microvilli-like structures. *J. Biol. Chem.* 273, 34663-34666.
- Pelton, P.D., Sherman, L., Rizvi, T., Marchionni, M., Wood, P., Friedman, R., and Ratner, N. (1998). Ruffling membrane, stress fiber, cell spreading and proliferation abnormalities in human schwannoma cells. *Oncogene* 17, 2195-2209.
- Qiu, R.G., Chen, J., Kirn, D., McCormick, F., and Symons, M. (1995). An essential role for Rac in Ras transformation. *Nature* 374, 457-459.
- Ren, X.D., Kiousses, W.B., and Schwartz, M.A. (1999). Regulation of the small GTP-binding protein Rho by cell adhesion and the cytoskeleton. *EMBO J.* 18, 578-585.
- Sainio, M., Zhao, F., Heiska, L., Turunen, O., den Bakker, M., Zwartthoff, E., Lutchman, M., Rouleau, G.A., Jaaskelainen, J., Vaheri, A., and Carpen, O. (1997). Neurofibromatosis 2 tumor suppressor protein colocalizes with ezrin and CD44 and associates with actin-containing cytoskeleton. *J. Cell Sci.* 110, 2249-2260.
- Sebt, S.M., and Hamilton, A.D. (2000). Farnesyltransferase and geranylgeranyltransferase I inhibitors in cancer therapy: important mechanistic and bench to bedside issues. *Expert Opin. Investig. Drugs.* 9, 2767-2782.
- Shaw, L.M., Rabinovitz, I., Wang, H.H., Toker, A., and Mercurio, A.M. (1997). Activation of phosphoinositide 3-OH kinase by the alpha-beta4 integrin promotes carcinoma invasion. *Cell* 91, 949-960.
- Shaw, R.J., Henry, M., Solomon, F., and Jacks, T. (1998a). RhoA-dependent phosphorylation and relocalization of ERM proteins into apical membrane/actin protrusions in fibroblasts. *Mol. Biol. Cell* 9, 403-419.
- Shaw, R.J., McClatchey, A.I., and Jacks, T. (1998b). Regulation of the neurofibromatosis type 2 tumor suppressor protein, merlin, by adhesion and growth arrest stimuli. *J. Biol. Chem.* 273, 7757-7764.
- Shaw, R.J., McClatchey, A.I., and Jacks, T. (1998c). Localization and functional domains of the neurofibromatosis type II tumor suppressor, merlin. *Cell Growth Diff.* 9, 287-296.
- Sherman, L., Sleeman, J., Herrlich, P., and Ponta, H. (1994). Hyaluronate receptors: key players in growth, differentiation, migration and tumor progression. *Curr. Op. Cell Biol.* 6, 726-733.
- Sherman, L., Xu, H.M., Geist, R.T., Saporito-Irwin, S., Howells, N., Ponta, H., Herrlich, P., and Gutmann, D.H. (1997). Interdomain binding mediates tumor growth suppression by the NF2 gene product. *Oncogene* 15, 2505-2509.
- Simons, P.C., Pietromonaco, S.F., Reczek, D., Bretscher, A., and Elias, L. (1998). C-terminal threonine phosphorylation activates ERM proteins to link the cell's cortical lipid bilayer to the cytoskeleton. *Biochem. Biophys. Res. Commun.* 253, 561-565.
- Takahashi, K., Sasaki, T., Mammoto, A., Takaishi, K., Kameyama, T., Tsukita, S., and Takai, Y. (1997). Direct interaction of the Rho GDP dissociation inhibitor with ezrin/radixin/moesin initiates the activation of the Rho small G protein. *J. Biol. Chem.* 272, 23371-23375.
- Takahashi, K., Sasaki, T., Mammoto, A., Takaishi, K., Imanura, H., Nakano, K., Kodama, A., and Takai, Y. (1998). Interaction of radixin with Rho small G protein GDP/GTP exchange protein Dbl. *Oncogene* 16, 3279-3284.
- Tikoo, A., Varga, M., Ramesh, V., Gusella, J., and Maruta, H. (1994). An anti-Ras function of neurofibromatosis type 2 gene product (NF2/Merlin). *J. Biol. Chem.* 269, 23387-23390.
- Todar G.J., and Green H. (1963). Quantitative studies of the growth of mouse embryo cells in culture and their development into established lines. *J. Cell Biol.* 17, 299-313.
- Van Aelst, L., and D'Souza-Schorey, C. (1997). Rho GTPases and signaling networks. *Genes Dev.* 11, 2295-2322.
- Vlach, J., Hennecke, S., and Amati, B. (1997). Phosphorylation-dependent degradation of the cyclin-dependent kinase inhibitor p27. *EMBO J.* 16, 5334-5344.
- Westwick, J.K., Lambert, Q.T., Clark, G.J., Symons, M., Van Aelst, L., Pestell, R.G., and Der, C.J. (1997). Rac regulation of transformation, gene expression, and actin organization by multiple, PAK-independent pathways. *Mol. Cell Biol.* 17, 1324-1335.
- Zohn, I.M., Campbell, S.L., Khosravi-Far, R., Rossman, K.L., and Der, C.J. (1998). Rho family proteins and Ras transformation: the RHOad less traveled gets congested. *Oncogene* 17, 1415-1438.