

AD \_\_\_\_\_

Award Number: DAMD17-99-1-9516

TITLE: TRAIL-Induced Apoptosis - A Prostate Cancer Therapy

PRINCIPAL INVESTIGATOR: Xiaojun Lu, Ph.D.  
Doctor David Rodman

CONTRACTING ORGANIZATION: University of Colorado Health Sciences Center at Fitzsimmons  
Aurora, Colorado 80045-0508

REPORT DATE: July 2002

TYPE OF REPORT: Annual Summary

PREPARED FOR: U.S. Army Medical Research and Materiel Command  
Fort Detrick, Maryland 21702-5012

DISTRIBUTION STATEMENT: Approved for Public Release;  
Distribution Unlimited

The views, opinions and/or findings contained in this report are those of the author(s) and should not be construed as an official Department of the Army position, policy or decision unless so designated by other documentation.

20021104 112

# REPORT DOCUMENTATION PAGE

*Form Approved*  
OMB No. 074-0188

Public reporting burden for this collection of information is estimated to average 1 hour per response, including the time for reviewing instructions, searching existing data sources, gathering and maintaining the data needed, and completing and reviewing this collection of information. Send comments regarding this burden estimate or any other aspect of this collection of information, including suggestions for reducing this burden to Washington Headquarters Services, Directorate for Information Operations and Reports, 1215 Jefferson Davis Highway, Suite 1204, Arlington, VA 22202-4302, and to the Office of Management and Budget, Paperwork Reduction Project (0704-0188), Washington, DC 20503

<b>1. AGENCY USE ONLY (Leave blank)</b>	<b>2. REPORT DATE</b> July 2002	<b>3. REPORT TYPE AND DATES COVERED</b> Annual Summary (1 Jul 99 - 30 Jun 02)
---	------------------------------------	--

<b>4. TITLE AND SUBTITLE</b> TRAIL-Induced Apoptosis - A Prostate Cancer Therapy	<b>5. FUNDING NUMBERS</b> DAMD17-99-1-9516
---	---

**6. AUTHOR(S)**  
Xiaojun Lu, Ph.D.  
Doctor David Rodman

**7. PERFORMING ORGANIZATION NAME(S) AND ADDRESS(ES)**  
University of Colorado Health Sciences Center at Fitzsimmons  
Aurora, Colorado 80045-0508  
  
E-Mail: xiaojun.lu@uchsc.edu

**8. PERFORMING ORGANIZATION REPORT NUMBER**

**9. SPONSORING / MONITORING AGENCY NAME(S) AND ADDRESS(ES)**  
U.S. Army Medical Research and Materiel Command  
Fort Detrick, Maryland 21702-5012

**10. SPONSORING / MONITORING AGENCY REPORT NUMBER**

**11. SUPPLEMENTARY NOTES**

**12a. DISTRIBUTION / AVAILABILITY STATEMENT**  
Approved for Public Release; Distribution Unlimited

**12b. DISTRIBUTION CODE**

**13. Abstract (Maximum 200 Words) (abstract should contain no proprietary or confidential information)**  
TRAIL induces apoptosis in five of six prostate cancer cell lines. The cell line LNCaP is resistant to TRAIL treatment. High constitutive expression of AKT was found in LNCaP cells, and suppression of AKT activity by the PI-3 kinase inhibitors wortmanin and Ly 294002 or dominant negative Akt expression renders LNCaP cells sensitive to TRAIL. Infection of LNCaP cells with a constitutively active AKT reverses the wortmanin effect. Thus, elevated AKT protects LNCaP cells from TRAIL-induced apoptosis. Overexpression of bcl-2 or bcl-X<sub>1</sub> in LNCaP cells inhibits cytochrome c release from mitochondria when TRAIL is used in combination with wortmanin, suggesting that the mitochondria mediated apoptosis pathway is crucial. Expression of other Bcl-2 family members such as BAX, BAK and caspases inhibitor XIAP does not change after TRAIL treatment. Heterozygous deficiency of MnSOD renders smooth muscle cells more sensitive TRAIL, indicating a possible role of mitochondria superoxide production in TRAIL induced apoptosis. In addition, TRAIL induces apoptosis in human angiomyolipoma cells - a cell culture model system for human lymphangiomyomatosis (LAM), suggesting a potential role for TRAIL in therapy for human LAM.

**14. SUBJECT TERMS**  
prostate cancer, TRAIL, AKT, Bcl-2, Bcl-X<sub>1</sub>, cytochrome c, wortmanin

**15. NUMBER OF PAGES**  
19

**16. PRICE CODE**

**17. SECURITY CLASSIFICATION OF REPORT**  
Unclassified

**18. SECURITY CLASSIFICATION OF THIS PAGE**  
Unclassified

**19. SECURITY CLASSIFICATION OF ABSTRACT**  
Unclassified

**20. LIMITATION OF ABSTRACT**  
Unlimited

## Table of Contents

Cover.....	1
SF 298.....	2
Table of Contents.....	3
Introduction.....	4
Body.....	4-8
Key Research Accomplishments.....	9
Reportable Outcomes.....	10
Conclusions.....	N/A
References.....	N/A
Appendices.....	11-19

## **Annual Summary Report for Award Number DAMD 17-99-1-9516**

### **Introduction**

TNF (tumor necrosis factor)-Related Apoptosis Inducing Ligand (TRAIL) is a proapoptotic cytokine that is capable of inducing apoptosis in a variety of human cancers via binding to its receptors DR4 and DR5 (death receptor 4 and 5). It appears to specifically kill transformed and cancer cells but has little or no toxicity to normal cells, which makes it promising anti-cancer agent for cancer therapy. In this study, we test whether prostate cancer cell lines undergo apoptosis when incubated with TRAIL. We find TRAIL induced apoptosis in five of six prostate cancer cell lines. Moreover, the biochemical mechanism by which prostate cancer cell line LNCaP is resistant to TRAIL-induced apoptosis is examined. Further, the role of mitochondria superoxide production in downstream apoptotic signaling by TRAIL is studied in smooth muscle cells system. In addition, a preliminary study of TRAIL as potential therapeutic agent for human lymphangiomyomatosis has been initiated.

### **Body**

In the past year, I received scientific training from the laboratory of Dr. Rodman, center for human genetic lung diseases, division of cardiovascular pulmonary research at the University of Colorado Health Science Center. Through a combination of personal instruction by my mentor and in seminars and journal clubs, I have learned a lot about prostate cancer biology and apoptosis. To date, I have completed task 1 and task 2 and part of task 3 proposed in my statement of work. I have also initiated preliminary studies on potential TRAIL therapy for human lymphangiomyomatosis

One aspect of my research last year was to examine TRAIL induced apoptosis pathway in prostate cancer cells. There are two major apoptotic pathways initiated either by the cell surface receptors (extrinsic pathway) or mitochondria (intrinsic pathway). TRAIL initiates apoptosis through binding to two death receptors DR4 and DR5 on the cell membrane. However, no correlation was found between expressions of DR4, DR5 and

the sensitivity of TRAIL in six prostate cancer cell lines. Analysis of TRAIL induced apoptosis in six prostate cancer cell lines *in vitro* has demonstrated that five prostate cancer cells lines ALVA 31, PC-3, DU 145, TSU-Pr1 and JCA1 are sensitive to TRAIL whereas the prostate cancer cell line LNCaP is resistant.

To study the biochemical mechanisms that cause LNCaP cells to be resistant to TRAIL induced apoptosis, the upstream survival factors PI3 kinase and AKT were tested in prostate cancer cell lines. Cells having higher constitutive AKT were more resistant to TRAIL treatment. Prostate cancer cell line LNCaP shows high constitutive AKT activity and is the most resistant cell line to TRAIL treatment. Pharmaceutical inhibition of AKT activity by PI-3 kinase inhibitors wortmanin and Ly 294002 suppressed constitutive AKT activity and sensitized LNCaP cells to TRAIL. Attenuation of AKT activity by overexpression of dominant negative AKT in LNCaP cells increases cells sensitivity to TRAIL. Moreover, infection of LNCaP cells with a constitutive active AKT reversed the ability of wortmanin to potentiate TRAIL induced apoptosis in LNCaP cells. Thus, elevated AKT activity becomes the upstream key player that contributes to the resistance of TRAIL-induced apoptosis in LNCaP.

The second element in the TRAIL-induced apoptosis pathway is caspase 8. Caspase 8 is recruited to form the death inducing signaling complex (DISC) along with TRAIL, DR4 and DR5. DISC formation then triggers the autoprocessing and activation of caspase 8. Lower expression of caspase 8 was found in TRAIL resistant cell line LNCaP compared to the five sensitive cell lines. However, caspase 8 cleavage occurred in all six prostate cancer cell lines upon TRAIL treatment. Thus, the block of TRAIL induced apoptosis occurs downstream of caspase 8.

The next element in the TRAIL signal pathway is the substrate of caspase 8, cytosolic proapoptotic protein p22 BID. BID is cleaved into tBID P15 by activated caspase 8. BID P15 then inserts into the mitochondrial membrane, resulting in the release of cytochrome c. In LNCaP cells treated with TRAIL alone, BID fail to be cleaved, cytochrome c is not released. But BID is cleaved and cytochrome c is released when TRAIL is added in

combination with cycloheximide or wortmanin to LNCaP cells. BID cleavage in these cells is consistent with cytochrome c release from mitochondria. Therefore, there is another blocker function between caspase 8 and BID cleavage.

To more precisely determine the biochemical step at which TRAIL induced apoptosis signaling stops, more studies of Bcl-2 family members were done. A major site of activity of the BCL-2 protein is the mitochondria membrane. Evasion or inactivation of the mitochondria apoptosis pathway may contribute to resistance of cell sensitivity to TRAIL. BCL-2 or BCL-X<sub>l</sub> inhibit release of mitochondria cytochrome c, maintaining mitochondrial membrane potential, thereby promoting apoptosis resistance and cell survival. Overexpression of Bcl-2 or Bcl-X<sub>l</sub> in LNCaP cells blocks cytochrome c release but did not affect caspase 8 and BID cleavage and renders the LNCaP resistant to TRAIL plus wortmanin treatment. However, the causes of LNCaP resistance to TRAIL treatment alone are still not clear downstream even though elevated AKT activity is the major upstream factor that mediates TRAIL resistance in LNCaP cells.

Recent studies have suggested that mitochondrial events are required for death receptors mediated apoptosis by TRAIL. Although BID is the link between mitochondrial pathway and death receptor signaling, how tBID regulates cytochrome c release is not known. One study has shown that TRAIL-caspase8-tBID-BAX cascade is required to remove the inhibitory effect of XIAP (the caspases inhibitors) and allow apoptosis to occur. BAX dependent release of Smac/DIABLO from mitochondria mediates the contribution of the mitochondrial pathway to death receptor mediated apoptosis. XIAP cleavage and BAX expression were not altered by addition of cycloheximide and wortmanin in LNCaP cells. To further examine the role of BAX in the TRAIL induced apoptosis pathway, more experiments need to be done to test how BAX dimerizes, and the ratio of proapoptotic BAX and anti-apoptotic BCL-2 that is critical in TRAIL-induced apoptosis.

Besides the importance of multiple members of the BCL-2 family in TRAIL-induced apoptosis, mitochondrial dysfunction is important as well. Mitochondrial dysfunction includes a change in the mitochondrial membrane potential, production of reactive

oxygen species, opening of permeability transition pores (PTP) and the release of the intermembrane space protein, cytochrome c (Cyt c). One major reactive oxygen species is superoxide anion produced by the electron transport chain in mitochondria. Cells are protected against this metabolically induced oxidative stress by several oxygen radical scavengers, including the superoxide dismutase (SOD). Three forms of SODs are found in mammalian cells, cytosolic Cu-Zn SOD (SOD1), mitochondrial Mn SOD (SOD2) and extracellular Cu-Zn containing SOD (SOD3).

To define the role of mitochondrial superoxide production downstream of TRAIL induced apoptosis, three isoforms of SOD knock out mice were generated to study TRAIL-induced apoptosis. To test the roles of three SODs in TRAIL- induced apoptosis, primary smooth muscle cell lines were established from heterozygous MnSOD or homozygous Cu-Zn SOD and Ec SOD mice. As MnSOD<sup>-/-</sup> mice suffer from severe oxidative damage and the animals die 2 days after the birth, therefore only heterozygous MnSOD<sup>+/-</sup> smooth muscle cells lines were established. Preliminary study revealed that TRAIL induced apoptosis in MnSOD <sup>+/-</sup> mutant cells but not in normal wild type mouse smooth muscle cells. Cu-Zn SOD <sup>-/-</sup> smooth muscle cells could not be grown in culture. EcSOD<sup>-/-</sup> mice fail to produce enough offspring for cell culture study. Haplodeficiency of MnSOD sensitizes mouse smooth muscle cells to TRAIL induced apoptosis, suggesting Mn SOD may play a role downstream of TRAIL induced apoptosis by modulating mitochondria function.

Another important aspect of my research was to apply my knowledge and experience obtained from TRAIL induced apoptosis study in prostate cancer to research on human lymphangiomyomatosis (LAM). Human LAM is characterized by a diffuse proliferation of abnormal smooth muscle cells in lung airways, vessels and lymphatics. This leads to cystic and nodular destruction of lung and is eventually fatal. It can occur sporadically or in association with tumor sclerosis complex (TSC). Although genetic studies have identified TSC2 mutation and loss of heterozygosity of TSC2 in LAM patients, there is no cure for this devastating disease. The purpose of this preliminary study is to search for a possible therapy for human LAM. As 80% of human LAM patients also have

commitant renal angiomyolipoma, human renal angiomyolipoma cell line SV tert 7 was used to mimic human LAM cells *in vitro*. Preliminary study has demonstrated that TRAIL induces apoptosis in human angiomyolipoma cells but not in human pulmonary smooth muscle cells. DNA fragmentation occurred after 24 hours treatment of TRAIL at 100ng/ml. Caspase 8 was activated, then BID was cleaved in to tBID, Caspase 3, 9 and PARP were all cleaved as well. Expression of BAX, BAD and BCL2 were not altered after TRAIL treatment. Cycloheximide augmented TRAIL induced apoptosis in human angiomyolipoma cells. TRAIL induced apoptosis in human angiomyolipoma cells is through the common death receptor initiated pathway. Further study will be carried out when a human LAM cell line becomes available.

## Key Research Accomplishments

- **TRAIL induces apoptosis in five of six prostate cancer cell lines.** Prostate cancer cell lines ALVA31, DU145, PC-3, JCA1 and TSU-Pr-1 were found sensitive to TRAIL, whereas the cell line LNCaP is resistant.
- **AKT mediates prostate cancer cell line LNCaP resistance to TRAIL-induced apoptosis.** Elevated AKT activity was found to prevent TRAIL-induced apoptosis in LNCaP cells. Attenuation of AKT activity by PI3 kinase inhibitors Ly 294002 or wortmanin or by dominant negative AKT expression sensitize LNCaP cells to TRAIL induced apoptosis. Overexpression of Bcl-2/Bcl-X<sub>l</sub> inhibits TRAIL induced apoptosis in LNCaP cells treated with TRAIL in combination with PI3 kinase inhibitors wortmanin or Ly 294002. Expression of BAX, BAK, and XIAP is not altered before and after the treatment of TRAIL or TRAIL + wortmanin, TRAIL +Ly294002.
- **The role of mitochondria superoxide production in TRAIL-induced apoptosis is partly examined.** Heterozygous deficiency of MnSOD makes smooth muscle cells more sensitive to TRAIL treatment whereas the normal smooth muscle is resistant to TRAIL.
- **TRAIL induces apoptosis in human angiomyolipoma cells- *in vitro* cell culture system for human Lymphangiomyomatosis (LAM).** DNA laddering was found after 24 hours treatment of TRAIL, Caspases 8,3 and 9 were shown activated. Cycloheximide augments TRAIL- induced apoptosis in human angiomyolipoma cells.

## Reportable Outcomes

### Publications

1. Xiaojun Lu, Marloes Hoedt-Miller, Brian Fouty and David Rodman, TRAIL induces apoptosis in "LAM"- like cells. Abstract, The LAM Foundation/NHLBI Research Conference, Cincinnati, March 22-24, 2002

2. Alexandre Nesterov, Xiaojun Lu, Michael Johnson, Gary J. Miller, Yuri Ivashchenko, and Andrew Kraft. Elevated AKT activity protects the prostate cancer cell line LNCaP from TRAIL induced apoptosis. *The Journal of Biological Chemistry* 276: 10767-10774, 2001

### Grant application

Beginning Grant In-AID application for American Heart Association entitled "TRAIL induces apoptosis in cell culture models for lymphangiomyomatosis". January, 2002

### Cell lines

Primary smooth muscle cell lines from wild type mouse pulmonary artery and MnSOD<sup>+/-</sup> heterozygous mice were established

## Elevated Akt Activity Protects the Prostate Cancer Cell Line LNCaP from TRAIL-induced Apoptosis\*

Received for publication, June 15, 2000, and in revised form, November 30, 2000  
Published, JBC Papers in Press, January 18, 2001, DOI 10.1074/jbc.M005196200

Alexandre Nesterov<sup>‡§</sup>, Xiaojun Lu<sup>¶</sup>, Michael Johnson<sup>‡</sup>, Gary J. Miller<sup>||</sup>, Yuri Ivashchenko<sup>\*\*</sup>, and Andrew S. Kraft<sup>‡‡</sup>

From the <sup>‡</sup>Division of Medical Oncology, <sup>¶</sup>Division of Pulmonary Medicine, and <sup>||</sup>Department of Pathology, University of Colorado Health Sciences Center, Denver, Colorado 80262 and <sup>\*\*</sup>Aventis Pharmaceuticals, 65926 Frankfurt, Germany

We find that the prostate cancer cell lines ALVA-31, PC-3, and DU 145 are highly sensitive to apoptosis induced by TRAIL (tumor-necrosis factor-related apoptosis-inducing ligand), while the cell lines TSU-Pr1 and JCA-1 are moderately sensitive, and the LNCaP cell line is resistant. LNCaP cells lack active lipid phosphatase PTEN, a negative regulator of the phosphatidylinositol (PI) 3-kinase/Akt pathway, and demonstrate a high constitutive Akt activity. Inhibition of PI 3-kinase using wortmannin and LY-294002 suppressed constitutive Akt activity and sensitized LNCaP cells to TRAIL. Treatment of LNCaP cells with TRAIL alone induced cleavage of the caspase 8 and XIAP proteins. However, processing of BID, mitochondrial release of cytochrome *c*, activation of caspases 7 and 9, and apoptosis did not occur unless TRAIL was combined with either wortmannin, LY-294002, or cycloheximide. Blocking cytochrome *c* release by Bcl-2 overexpression rendered LNCaP cells resistant to TRAIL plus wortmannin treatment but did not affect caspase 8 or BID processing. This indicates that in these cells mitochondria are required for the propagation rather than the initiation of the apoptotic cascade. Infection of LNCaP cells with an adenovirus expressing a constitutively active Akt reversed the ability of wortmannin to potentiate TRAIL-induced BID cleavage. Thus, the PI 3-kinase-dependent blockage of TRAIL-induced apoptosis in LNCaP cells appears to be mediated by Akt through the inhibition of BID cleavage.

TRAIL (tumor-necrosis factor-related apoptosis-inducing ligand) (1) also known as Apo-2 ligand (2) is a proapoptotic cytokine that together with three related proteins (tumor necrosis factor- $\alpha$ , CD95L/FasL, and TWEAK/Apo3L) constitutes a family of ligands that transduce death signals through death domain-containing receptors (3–5). TRAIL is a type II transmembrane protein that functions by binding to two closely related receptors, DR4 and DR5 (6). Both TRAIL and its receptors are ubiquitously expressed (7), suggesting the existence of

mechanisms that protect normal tissues from TRAIL-induced apoptosis.

TRAIL is capable of inducing apoptosis in a wide variety of cancer cells in culture and in tumor implants in mice, including cancers of the colon, breast, lung, kidney, central nervous system, blood, and skin (1, 6, 8–11). At the same time, unlike tumor necrosis factor- $\alpha$  and Fas ligand, whose use for cancer therapy has been hampered by their severe toxicity (12, 13), TRAIL has no toxic effects when systemically administered in rodents (10) and nonhuman primates (9). Although the majority of normal human cells tested so far appear to be TRAIL-resistant, recent experiments have demonstrated that cultured human liver cells may be sensitive to TRAIL (14), suggesting that additional studies are required to investigate what determines resistance or sensitivity to this agent.

Despite the ubiquitous expression of TRAIL receptors, a significant proportion of cell lines originating from various cancer types demonstrate either partial or complete resistance to the proapoptotic effects of TRAIL. These findings suggest either defects in apoptotic pathways or the presence of inhibitors of TRAIL-induced apoptosis. The latter possibility appears to be more likely, since the resistance of many types of cancer cells to TRAIL can be reversed by treatment with protein synthesis inhibitors (15–19) or chemotherapeutic agents (9, 11). Some normal human cells can also be sensitized to TRAIL by the inhibition of protein synthesis (20). The elucidation of mechanisms that control sensitivity to TRAIL may lead to better understanding of death receptor-mediated signaling and help to develop TRAIL-based approaches to cancer treatment.

Activation of death receptors leads to the formation of the death-inducing signaling complex (DISC)<sup>1</sup> (21), which includes the receptor itself, and caspase 8 (22). The recruitment of caspase 8 to TRAIL receptors DR4 and DR5 is thought to be mediated by the adaptor protein FADD (23–25). The formation of the DISC triggers autoproteolysis and activation of caspase 8 (22) that in turn results in the cleavage and activation of the effector caspase 3 or 7 (26, 27), leading to apoptosis. Activated caspase 8 may also cleave a proapoptotic protein BID, whose cleavage product triggers cytochrome *c* release from mitochondria (28, 29). In some but not all cell types, the mitochondrial step may be required to amplify the apoptotic signal and fully activate caspase 8 (30). Since the TRAIL-induced apoptotic signal is a multistep process, inhibition of this cascade may occur at several stages. For example, at the ligand-receptor level, TRAIL signaling could be inhibited by the overexpression of nonfunctional TRAIL receptors DcR1 or DcR2 (31) or by proteins that induce rapid internalization of TRAIL receptors

\* This work was supported by National Institutes of Health Grant CA 78631 (to A. S. K.) and United States Public Health Service Grant CA 53520 (to G. J. M.). The costs of publication of this article were defrayed in part by the payment of page charges. This article must therefore be hereby marked "advertisement" in accordance with 18 U.S.C. Section 1734 solely to indicate this fact.

<sup>§</sup> To whom correspondence may be addressed: Division of Medical Oncology, University of Colorado Health Sciences Center, 4200 E. Ninth Ave., Denver, CO 80262. Tel.: 303-315-7691; Fax: 303-315-5502; E-mail: Alexander.Nesterov@UCHSC.edu.

<sup>‡‡</sup> To whom correspondence may be addressed: Division of Medical Oncology, University of Colorado Health Sciences Center, 4200 E. Ninth Ave., Denver, CO 80262. Tel.: 303-315-8802; E-mail: Andrew.Kraft@UCHSC.edu.

<sup>1</sup> The abbreviations used are: DISC, death-inducing signaling complex; PI, phosphatidylinositol; TUNEL, terminal deoxynucleotidyl transferase-mediated nick end labeling.

(similar to Fas inhibition the adenoviral protein E3) (32). At the DISC, the apoptotic pathway may be inhibited by cFLIP protein that is capable of blocking processing and activation of caspase 8 (33, 34). Downstream of DISC, IAP proteins may specifically inhibit the executor caspases 3 and 7 (35). In those cells that require mitochondria to stimulate apoptosis, the signal may be inhibited by Bcl-2/Bcl-X<sub>L</sub> types of proteins that prevent the release of proapoptotic factors from the mitochondria (30).

In the present study, we tested the cytotoxic effects of TRAIL on six human prostate cancer cell lines, demonstrating variable responses, with some cell lines being extremely sensitive and others highly resistant. The highly resistant cell line LNCaP was further investigated to examine mechanisms that protect it from TRAIL-mediated apoptosis. We find that the TRAIL-induced death signal in LNCaP cells is negatively regulated by a high constitutive activity of protein kinase Akt. Furthermore, the antiapoptotic block occurs downstream of caspase 8 activation at the level of BID protein cleavage. This study is the first demonstration that the PI 3-kinase/Akt pathway may interfere with an apoptotic signal by inhibiting processing of BID.

#### EXPERIMENTAL PROCEDURES

**Antibodies**—Antibodies were obtained from the following sources: anti-phospho-Akt (New England Biolabs, Beverly, MA); anti-cytochrome *c* and anti-BID (Zymed Laboratories Inc.); anti-Akt and anti-XIAP (Transduction Laboratories, Lexington, KY); anti-HA1 tag (Babco, Richmond, CA); anti-caspase 8 (Upstate Biotechnology, Inc., Lake Placid, NY); anti-caspase 7 (PharMingen, San Diego, CA); anti-caspase 9 (Oncogene Research Products, Boston, MA); anti-FLIP<sub>L</sub> (Affinity BioReagents, Golden, CO); anti-FLIP<sub>Δ</sub> (Calbiochem).

**Cell Culture**—Prostate cancer cell lines LNCaP, PC-3, DU 145, TSU-Pr1, JCA-1, and ALVA-31 were passaged in RPMI 1640 with 10% fetal calf serum, 50 units/ml penicillin, and 50 units/ml streptomycin. The sources for these cell lines, their characterization, and use in our laboratories have been described previously (36). LNCaP cells overexpressing Bcl-2 (37) were kindly provided by Dr. R. Buttyan (Columbia Presbyterian Medical Center, New York, NY) and grown in medium supplemented with 400 μg/ml of G418.

**Expression of Recombinant TRAIL in Yeast *Pichia pastoris***—A cDNA encoding for soluble human TRAIL (residues 114–281) was amplified by polymerase chain reaction from the expressed sequence tag clone 117926 (GenBank™ accession number T90422) in frame with the N-terminal hexahistidine tag using oligonucleotides 5'-AGTCATGAATTC-CATCACCATCACCATCACGTGAGAGAAAGAGGTCCTCAGAGAGT-AG-3' and 5'-AGTCATGGTACCTTAGCCAACTAAAAAGGCCCGAA-AAA-3'. This cDNA was then cloned into the *EcoRI/KpnI* sites of pPIC-ZeA vector (Invitrogen, Carlsbad, CA) in frame with the cleavable secretion signal from yeast  $\alpha$  factor. All manipulations of yeast were performed in general as outlined in the Invitrogen manual. Briefly, the expression vector was linearized and transformed by electroporation into *P. pastoris* strain SMD1168 (38). Transformants were selected on 500 μg/ml of Zeocin, and secretion of TRAIL was tested by Western blotting. For large scale production, yeast were grown for 24 h in 10 liters of complex medium containing glycerol and antifoam 289 (Sigma, St. Louis, MO) and buffered with 100 mM potassium phosphate buffer, pH 6.0, at constant aeration and mixing to A<sub>600</sub> of 15. To induce TRAIL production, cells were pelleted by centrifugation, resuspended in complex medium containing 0.5% methanol, and grown for 24 h. The supernatant was concentrated using tangential flow Prep/Scale-TFF cartridge (Millipore Corp., Bedford, MA) and recombinant TRAIL purified by nickel-chelate chromatography on a Ni<sup>2+</sup>-nitrilotriacetic acid-agarose column (Qiagen, Valencia, CA). This procedure yielded about 2 mg of pure protein from 1 liter of yeast supernatant.

**Cytotoxicity Assays**—Cell viability was determined spectrophotometrically using an Aqueous One tetrazolium-based assay (Promega, Madison, WI). Absorbance was measured at 490 nm, and data from duplicate determinations were plotted as percentage of untreated control cells. Quantitative analysis of DNA fragmentation was done using a Cell Death Detection ELISA<sup>plus</sup> kit (Roche Diagnostics Corp., Indianapolis, IN) by measuring relative amounts of DNA-histone complexes released into the cytoplasm. Data from triplicate determinations were plotted as percentage of control of untreated cells. A TUNEL assay was performed using the FragEL™ DNA fragmentation detection kit (On-

cogene Research Products, Cambridge, MA).

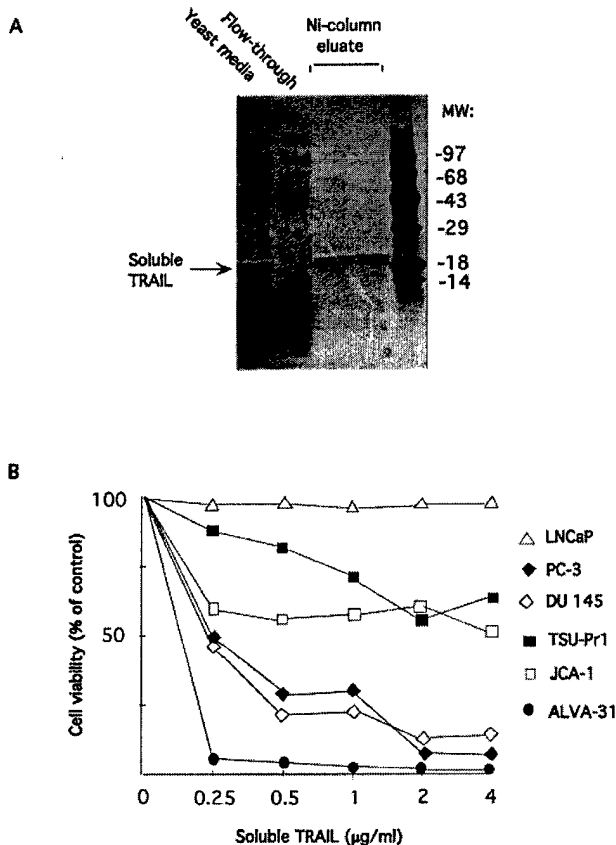
**Measurement of Cytochrome *c* Release from Mitochondria**—Cytosolic extracts from LNCaP cells were prepared by the hypotonic lysis procedure originally described by Bossy-Wetzel *et al.* (39) and modified by Carson *et al.* (40). LNCaP cells grown on 15-cm plates to 50% confluence were placed on ice and then scraped directly into growth medium and centrifuged for 2 min at 200 × *g*. Cell pellets were then washed once with ice-cold phosphate-buffered saline and resuspended in 300 μl of hypotonic lysis buffer (220 mM mannitol, 68 mM sucrose, 50 mM PIPES-KOH (pH 7.4), 50 mM KCl, 5 mM EDTA, 2 mM MgCl<sub>2</sub>, 1 mM dithiothreitol) containing protease inhibitors, including Complete Mixture (Roche Molecular Biochemicals, Germany), 1 mM phenylmethylsulfonyl fluoride, 10 μg/ml leupeptin, and 2 μg/ml aprotinin. Cells were incubated on ice for 45 min and homogenized by pipetting (10 passes up and down). Supernatants were cleared by 10-min centrifugation at 1000 × *g*, followed by 30 min at 100,000 × *g* and analyzed by Western blotting with the anti-cytochrome *c* antibody.

**Construction of Adenoviral Vectors Expressing myr-Akt**—The full-length coding sequence of human Akt1 was fused in frame with the myristoylation signal from the human Src protein in the N terminus and HA tag in the C terminus (myr-Akt). Kinase-dead construct was created by mutating lysine 179 for alanine, destroying in that way an ATP-binding site (myr-Akt(K-)). Recombinant adenoviruses were constructed by the method described by Crouzet *et al.* (41). Briefly, cDNAs of interest were subcloned into the expression cassette in plasmid vector pXL2996 under the control of the cytomegalovirus promoter. Each expression cassette was subcloned into the shuttle vector pXL3474. The resulting shuttle plasmids were introduced into *Escherichia coli* JM83 cells by electroporation. After double homologous recombinations, plasmid DNA for recombinant virus was purified by CsCl density gradient centrifugation. This DNA was linearized and transfected into 293 cells. 2–3 weeks after transfections, recombinant adenovirus was harvested from the conditioned medium and amplified in 293 cells.

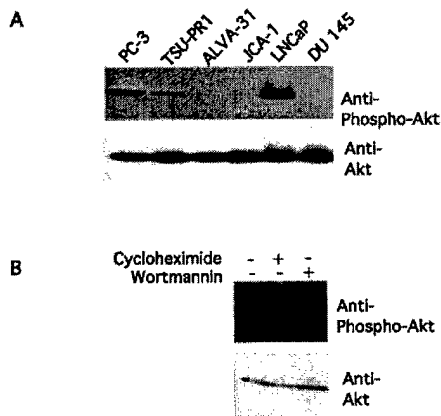
#### RESULTS

**Effect of Soluble TRAIL on Six Prostate Cancer Cell Lines**—Recombinant human TRAIL (residues 114–281) was produced in methylotrophic yeast *P. pastoris* as a fusion protein containing an N-terminal hexahistidine tag and a cleavable secretion signal from yeast  $\alpha$  factor. These features allowed quick one-step purification of secreted 20-kDa TRAIL by nickel-chelate chromatography from yeast supernatant yielding ~2 mg of pure protein from each liter of yeast culture medium (Fig. 1A). The cytotoxic effects of TRAIL were tested on a panel of six prostate cancer cell lines (Fig. 1B). Cell viability assays demonstrated that three of these cell lines, ALVA-31, DU 145, and PC-3 were very sensitive to TRAIL, JCA-1, and TSU-Pr1 revealed moderate sensitivity, whereas LNCaP cells were resistant to as high as 4 μg/ml of TRAIL. Internucleosomal fragmentation (DNA laddering) confirmed that cell death occurred by apoptosis (data not shown).

To investigate the mechanisms controlling the resistance of LNCaP cells to the cytotoxic effect of TRAIL, a series of Western and Northern blot experiments were done to compare the expression of various components of the TRAIL signaling pathway among the six prostate cancer cell lines. However, no correlation was found between the sensitivity of cells to TRAIL and the expression of TRAIL receptors DR4 and DR5, decoy receptors for TRAIL DcR1 and DcR2, initiator caspase 8, and apoptosis inhibitory protein cFLIP (data not shown). LNCaP cells contain a deactivating frameshift mutation in the gene encoding the tumor suppressor PTEN (42). This dual specificity phosphatase cleaves D3 phosphate of second messenger lipid phosphatidylinositol (PI) 3,4,5-trisphosphate (43). PI 3,4,5-trisphosphate produced by PI 3-kinase activates protein kinase Akt, and therefore, the lack of negative regulation by PTEN results in the constitutive activation of Akt in LNCaP cells (40). Immunoblot analysis with an antibody that specifically recognizes the phosphorylated/activated form of Akt (Ser<sup>473</sup>) demonstrates that LNCaP cells possess the highest Akt activity among the six prostate cancer cell lines (Fig. 2A). Treating cells with the inhibitor of PI 3-kinase, wortmannin (200 nM), for 6 h



**FIG. 1. Sensitivity of human prostate cancer cell lines to soluble human TRAIL.** A, purification of recombinant TRAIL from *P. pastoris* supernatant by nickel-chelate chromatography. B, relative viability of six prostate cancer cell lines treated for 24 h with TRAIL, as measured by the tetrazolium conversion assay. Data are expressed as the means for duplicate determinations.



**FIG. 2. Constitutive activity of Akt in prostate cancer cells determined by immunoblot with anti-phospho-Akt antibody (Ser<sup>473</sup>).** A, cell lysates prepared from six prostate cancer cell lines were probed by immunoblotting with anti-phospho-Akt antibody (top panel) or anti-Akt antibody (bottom panel). B, LNCaP cells were treated with wortmannin (200 nM) or cycloheximide (10 µM) for 6 h, and cell lysates were immunoblotted with anti-phospho-Akt antibody (top panel) or anti-Akt/PKB $\alpha$  antibody (bottom panel).

reverses the high constitutive activity of Akt (Fig. 2B).

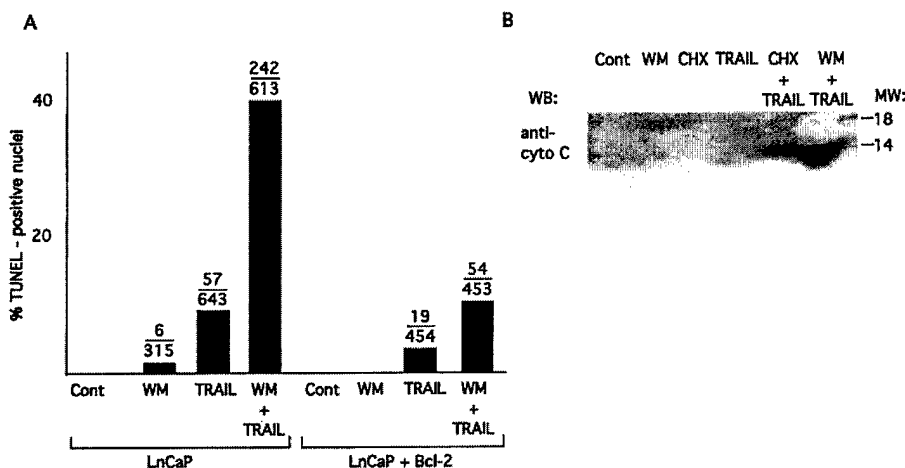
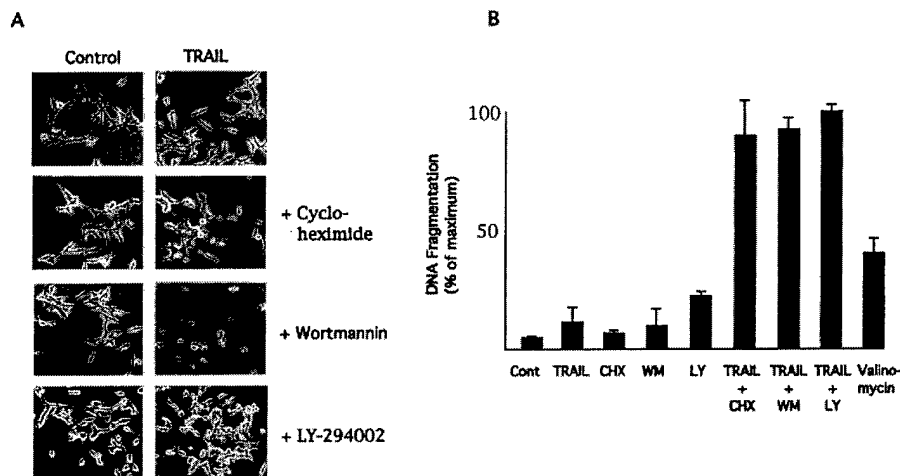
**Inhibition of PI 3-Kinase Activity or Protein Synthesis Renders LNCaP Cells Sensitive to TRAIL**—To test whether the high constitutive activity of Akt in LNCaP cells results in their resistance to TRAIL, we first examined how PI 3-kinase inhibitors wortmannin (200 nM) and LY-294002 (20 µM) effect

TRAIL cytotoxicity. Wortmannin acts at nanomolar concentrations by covalently modifying PI 3-kinase (44) but is unstable in aqueous solutions (45), making it possible that some PI 3-kinase activity can be restored by *de novo* synthesis in the course of the experiment. LY-294002 does not bind the enzyme covalently and has an IC<sub>50</sub> value for PI 3-kinase about 500-fold higher than that of wortmannin (46) but is much more stable in culture medium. We have found that both substances significantly enhanced the proapoptotic activity of TRAIL in LNCaP cells as judged by apoptotic morphology (Fig. 3A) and DNA fragmentation (Fig. 3B), quantitated by measuring the relative amounts of DNA-histone complexes released into cytoplasm. Since wortmannin and LY-294002 inhibit PI 3-kinase by different mechanisms, this result confirms that sensitization of cells to TRAIL occurs through the inhibition of the PI 3-kinase pathway. Inhibition of protein synthesis with cycloheximide also sensitized LNCaP cells to TRAIL (Fig. 3, A and B). The DNA fragmentation induced by TRAIL in combination with wortmannin, LY-294002, or cycloheximide was greater than that triggered by the potassium ionophore valinomycin (Fig. 3B), a potent inducer of apoptosis (47). Thus, the resistance of LNCaP cells to TRAIL results from the blockage of the TRAIL-induced apoptotic signal transduction cascade rather than the defects in apoptotic machinery. These data demonstrate that the inhibition of TRAIL-mediated apoptosis in LNCaP cells requires PI 3-kinase activity and involves some short lived protein component(s).

**TRAIL-mediated Cytochrome c Release Is Blocked in LNCaP Cells**—Depending on the cell type, apoptotic signaling mediated by CD95/Fas may or may not require the release of proapoptotic factors (cytochrome c and apoptosis-inducing factor) from mitochondria. In type II, but not in type I cells, inhibition of mitochondrial apoptogenic activities by overexpression of Bcl-2 protein blocks Fas-mediated apoptosis (30). To examine whether the apoptogenic activity of mitochondria is required for the transduction of the TRAIL-induced death signal in LNCaP cells, the cytotoxic effects of TRAIL alone or in combination with wortmannin were studied in an LNCaP cell line overexpressing Bcl-2 (37). Quantitation of apoptotic nuclei by the TUNEL technique clearly demonstrates that Bcl-2 overexpression impairs the cytotoxic effect of TRAIL (Fig. 4A), indicating that mitochondria play an important role in TRAIL-induced apoptosis of LNCaP cells. If the resistance of LNCaP cells to TRAIL results from the high constitutive activity of Akt, this enzyme may block apoptosis either upstream (48, 49) or downstream (50) of mitochondrial cytochrome c release. To discriminate between these two possibilities, experiments were done to examine whether TRAIL-induced cytochrome c release is inhibited in LNCaP cells. LNCaP cells were incubated for 6 h with TRAIL alone or TRAIL in combination with cycloheximide or wortmannin. Cytosolic extracts were then prepared under conditions that keep mitochondria intact (39), and cytochrome c released to the cytosolic fraction was then detected by immunoblotting (Fig. 4B). This experiment demonstrated that in LNCaP cells TRAIL alone does not trigger the release of cytochrome c from the mitochondria, but it does so in combination with wortmannin and, to a lesser extent, cycloheximide. Thus, TRAIL-induced apoptotic signaling in LNCaP cells is blocked upstream of the mitochondria.

**TRAIL-induced Apoptotic Signaling in LNCaP Cells Is Blocked at the Level of BID Cleavage**—To understand at what biochemical step the TRAIL-mediated apoptotic cascade is blocked in LNCaP cells, a series of immunoblotting experiments were carried out using antibodies to proteins involved in this cascade. Our results demonstrate that processing of initiator caspase 8 is induced by TRAIL alone as efficiently as when

**FIG. 3. Inhibitors of PI 3-kinase or protein synthesis potentiate the cytotoxic activity of TRAIL.** *A*, LNCaP cells were treated for 24 h with 1  $\mu$ g/ml TRAIL, 200 nM wortmannin, 20  $\mu$ M LY-294002, or 10  $\mu$ M cycloheximide alone or in combinations. The cells were visualized by light microscopy. *B*, LNCaP cells were treated for 6 h with 1  $\mu$ g/ml TRAIL, 200 nM wortmannin (WM), 20  $\mu$ M LY-294002, 10  $\mu$ M cycloheximide (CHX), or 100  $\mu$ M valinomycin alone or in combinations. DNA fragmentation was quantitated by measuring the relative amounts of DNA-histone complexes released into the cytoplasm using a Cell Death Detection ELISA<sup>plus</sup> kit.



**FIG. 4. The role of mitochondrial cytochrome c release for TRAIL-induced apoptosis in LNCaP cells.** *A*, parental LNCaP cells or LNCaP cells overexpressing Bcl-2 were treated as described in the legend to Fig. 3B, and apoptotic nuclei were scored by TUNEL staining. Several randomly chosen microscopic fields were visualized, and both normal and TUNEL-positive cells were counted. The numbers of TUNEL-positive versus total numbers of counted cells are represented as ratios above the bar graphs. *B*, LNCaP cells were treated with TRAIL, wortmannin, or cycloheximide as described above. Cells were lysed in hypotonic buffer, and cytochrome c in the cytosolic fraction was measured by immunoblotting with cytochrome c-specific antibodies.

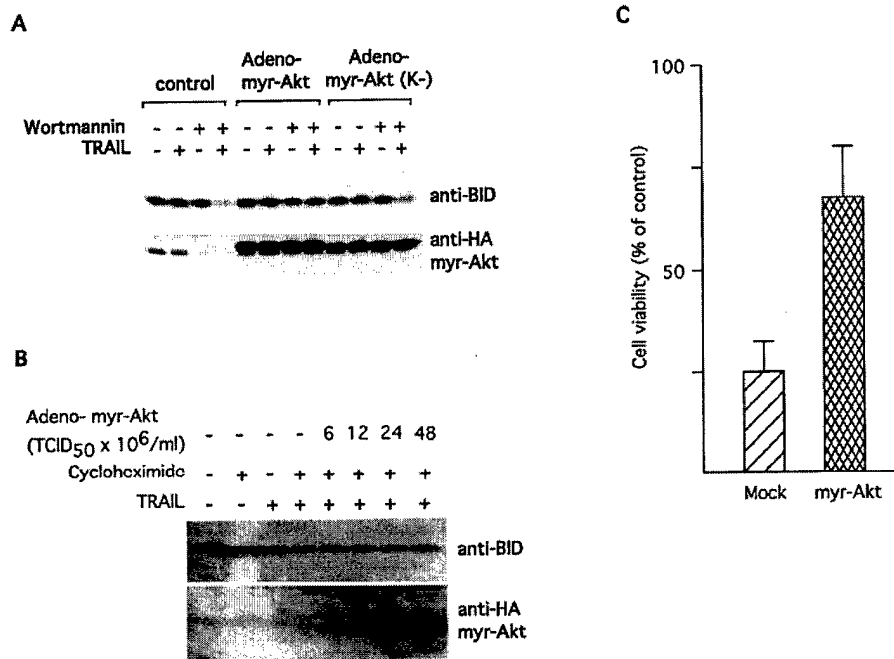
TRAIL is combined with cycloheximide and wortmannin (Fig. 5A). Similarly, these two compounds did not enhance TRAIL-induced cleavage of the apoptosis inhibitory protein XIAP, a substrate for several caspases including caspase 8 (51). These results suggest that the antiapoptotic block in LNCaP occurs downstream of caspase 8 activation. In contrast, proteolytic cleavage of the caspase 8 substrate BID was not detected in TRAIL-treated cells unless TRAIL was administered in combination with cycloheximide or wortmannin. Caspase 8-mediated cleavage of BID generates a proteolytic fragment, tBID, that is capable of inducing mitochondrial cytochrome c release and providing a functional link between death receptors and the mitochondria (28, 29). The lack of BID cleavage is thus consistent with the observation that TRAIL alone is not capable of inducing cytochrome c release. TRAIL-mediated processing of cytochrome c-dependent caspase 9 and effector caspase 7 were also detected only if TRAIL was combined with wortmannin or cycloheximide. The involvement of PI 3-kinase in the blockage of TRAIL-induced BID cleavage was further confirmed by the experiment with another PI 3-kinase inhibitor, LY-294002. Fig. 5B demonstrates that treatment of LNCaP cells with LY-294002 in combination with TRAIL results in the decreasing of cellular BID level. Thus, the PI 3-kinase- and protein synthesis-dependent antiapoptotic block in LNCaP cells occurs downstream of caspase 8, at the level of BID cleavage.

Alternatively, it is possible that the lack of BID cleavage may result from an inhibition of mitochondrial function. By analogy with the CD95/Fas system, LNCaP cells may be classified as type II cells, since mitochondrial function appears to be necessary for apoptosis. In type II cells, mitochondrial cytochrome c

release serves as an amplification loop that potentiates the activation of caspase 8. If a similar mitochondria-dependent amplification loop is involved in TRAIL signaling in LNCaP cells, its disruption may affect caspase 8-mediated BID cleavage. To test whether or not cleavage of BID in LNCaP cells depends on mitochondrial function, the processing of BID in Bcl-2 overexpressor LNCaP cells versus parental cells was examined. Immunoblot analysis (Fig. 5C) demonstrates that after 6 h of treatment with TRAIL plus wortmannin or TRAIL plus cycloheximide, BID is processed equally well in parental and Bcl-2-overexpressing LNCaP cells. In addition, caspase 8 was processed efficiently in both cell lines as judged by the TRAIL-induced appearance of a cleavage product that corresponds to the 20-kDa active subunit of caspase 8. Thus, apoptogenic activity of mitochondria is not required for TRAIL-induced cleavage of BID and caspase 8.

Our results demonstrate that the blockage of TRAIL-induced apoptosis at the level of BID cleavage can be removed by cycloheximide treatment, suggesting the possibility that this inhibition may be mediated by a short lived protein. It has been hypothesized that inhibition of protein synthesis sensitizes cells to death-inducing ligands by down-regulating antiapoptotic cFLIP proteins (15, 19, 52). To determine whether this is the case for LNCaP cells, cell lysates from a previous experiment (Fig. 5A) were immunoblotted with antibodies that recognize different splice variants of cFLIP proteins: FLIP<sub>L</sub>, FLIP<sub>γ</sub>, and FLIP<sub>δ</sub> (53). In contrast to published data, treatment of LNCaP cells for up to 16 h with cycloheximide or wortmannin had no effect on the level of cFLIP proteins (Fig. 5C), suggesting that they are unlikely to be involved in the





**FIG. 6. Constitutively active Akt inhibits proapoptotic effects of TRAIL.** *A*, LNCaP cells were infected with adenoviral constructs expressing myristoylated Akt (*Adeno-myr-Akt*) or kinase-inactive myristoylated Akt (*Adeno-myr-Akt(K-)*) at a titer of  $3 \times 10^6$  TCID<sub>50</sub>/ml. Control cells were not infected with adenoviruses. 16 h postinfection, the cells were treated for 6 h with 1  $\mu$ g/ml TRAIL and 200 nM wortmannin alone or in combination. Cell lysates were consecutively probed with BID-specific antibody and anti-HA1 antibody that recognizes hemagglutinin-tagged myr-Akt. *B*, LNCaP cells were infected where indicated with adenoviral constructs expressing myristoylated Akt (*Adeno-myr-Akt*) at a titer increasing from 6 to  $48 \times 10^6$  TCID<sub>50</sub>/ml. Control cells were not infected with adenovirus. 16 h after infection, the cells were treated for 6 h with 1  $\mu$ g/ml of TRAIL and 10  $\mu$ M cycloheximide alone or in combination. Cell lysates were probed as outlined for *A*. *C*, ALVA-31 cells were transiently cotransfected with an expression plasmid encoding the *E. coli lacZ* gene plus an expression plasmid for myristoylated Akt (*myr-Akt*) (60) or empty expression vector (*Mock*). 24 h after transfection, the cells were incubated with or without 0.1  $\mu$ g/ml TRAIL and scored for apoptosis 24 h later. Cells positive for  $\beta$ -galactosidase activity were checked for morphological changes characteristic of apoptosis, and the percentage of live cells was quantitated.

protein kinase is known to block apoptosis (55), we tested whether inhibition of this pathway affects the sensitivity of LNCaP cells to TRAIL. We found that treatment with the PI 3-kinase inhibitors wortmannin and LY-294002 or the protein synthesis inhibitor cycloheximide renders them sensitive to TRAIL-induced apoptosis. Thus, the resistance of LNCaP cells to TRAIL results not from defects in apoptotic machinery, but from PI 3-kinase-dependent inhibition of the TRAIL-mediated apoptotic signaling pathway.

It has been reported that apoptosis induced by triggering of CD95/Fas (56, 57) is counteracted by the PI 3-kinase/Akt pathway, but the molecular mechanisms that cause apoptosis resistance remain unclear. To identify which step of the TRAIL-mediated apoptotic pathway is blocked in LNCaP cells, we first tested whether the release of proapoptotic factors from mitochondria is essential for TRAIL-induced death of these cells. The involvement of mitochondria in apoptosis induced by death receptors remains controversial. Scaffidi *et al.* (30) have proposed that two types of cells exist that differ with respect to their requirement for mitochondria during Fas-mediated apoptosis. In type I cells, caspase 8 is activated without involvement of mitochondria to a level sufficient to process the effector caspase 3. In contrast, in type II cells a mitochondria-dependent amplification loop is required to fully activate caspase 8 and transduce an apoptotic signal. This model has recently been questioned by Huang *et al.* (58), who argue that the difference between type I and type II cells is an artifact of using agonistic anti-Fas antibodies to trigger Fas signaling instead of Fas ligand. To clarify the role of mitochondria in TRAIL-induced apoptosis in LNCaP cells, we used Bcl-2-overexpressing LNCaP cells, which were shown to exhibit an impaired cytochrome *c* release in response to various apoptotic stimuli (37).

Our results demonstrate that these cells are much more resistant to TRAIL plus wortmannin-induced apoptosis compared with the parental cells. In these experiments, apoptosis was triggered by soluble death receptor ligand and not agonistic antibody, supporting the notion that in some cells mitochondrial function is indeed essential for death receptor-mediated apoptosis.

Using a cell fractionation approach, we have found that TRAIL-induced cytochrome *c* release was blocked in LNCaP cells, but both wortmannin and cycloheximide are capable of overcoming this block. Release of mitochondrial cytochrome *c* by death receptors is triggered by a multistep mechanism. The formation of the DISC results in autoprocessing and activation of the initiator caspase 8 followed by cleavage of the proapoptotic protein BID (28, 29). A proteolytic fragment of BID translocates to the mitochondria as an integral membrane protein and triggers the release of mitochondrial cytochrome *c* (59). Using immunoblot analysis, we found that cleavage of caspase 8 and one of its substrates, the antiapoptotic protein XIAP (51) were induced by TRAIL alone as efficiently as when TRAIL was combined with either wortmannin or cycloheximide. This important result indicates that DISC formation or caspase 8 activation was not blocked in LNCaP cells. In contrast, wortmannin and cycloheximide were required for TRAIL-induced cleavage of BID, the release of cytochrome *c*, and processing of caspases 9 and 7. Thus, the PI 3-kinase-dependent block of TRAIL-induced apoptosis in LNCaP cells occurs at the level of BID cleavage.

The requirement for mitochondrial apoptogenic activity in TRAIL-induced death suggests that LNCaP cells are similar to type II cells. If so, the lack of BID cleavage could, in principle, be explained by the disruption of a mitochondria-dependent

amplification loop, resulting in only partial activation of caspase 8. To see whether this hypothesis could be true, we compared the cleavage of BID and caspase 8 in Bcl-2-overexpressing versus parental LNCaP cells and found that these proteins are processed equally well in both cell lines. These results demonstrate that although mitochondrial function is important for TRAIL-induced apoptosis in LNCaP cells, unlike "typical" type II cells mitochondria are required not to amplify caspase 8 activation but to transduce apoptotic signal downstream of the initiator caspase. Therefore, it may be possible to classify LNCaP as type III cells where mitochondria are involved in the propagation rather than the initiation of the apoptotic cascade.

Involvement of PI 3-kinase in the block of apoptosis suggests that Akt could mediate resistance of LNCaP cells to TRAIL. To confirm this hypothesis, we tested whether overexpression of constitutively active Akt could inhibit the proapoptotic effect of TRAIL plus wortmannin treatment. For this purpose, we used a myristoylated derivative of Akt, which exhibits kinase activity independently of PI 3-kinase (60). Both apoptosis (data not shown) and BID cleavage induced by treatment of LNCaP cells with TRAIL plus wortmannin were inhibited by overexpression of myristoylated Akt, indicating that resistance of LNCaP cells to TRAIL is, at least in part, mediated by Akt.

It has been documented that Akt may inhibit a variety of apoptotic stimuli in multiple ways (55). These include direct phosphorylation and modulation of proapoptotic proteins BAD (48) and caspase 9 (50), activation of antiapoptotic NF- $\kappa$ B-mediated transcriptional pathways (61, 62), or phosphorylation of the Forkhead family of transcription factors, preventing them from inducing the transcription of proapoptotic genes (63). Inhibition of BID cleavage has not been previously reported as a mechanism through which PI 3-kinase and Akt block apoptotic signals.

Although it remains unclear how the PI 3-kinase/Akt pathway mediates inhibition of BID cleavage, our data suggest an indirect mechanism. First, inhibition of protein synthesis by cycloheximide affected the same step of TRAIL apoptotic cascade as the inhibition of PI 3-kinase. However, even very high levels of constitutively active Akt did not rescue BID from cleavage when TRAIL was combined with cycloheximide rather than wortmannin. These results suggest that a short lived protein is involved in the PI 3-kinase/Akt-mediated blockage of BID cleavage, and the synthesis of this hypothetical protein may be triggered by Akt. Second, the effect of myristoylated Akt appears to be cell type-specific, since its overexpression did not rescue HeLa, DU-145, or A498 cells from TRAIL-induced apoptosis (data not shown) but did rescue LNCaP and ALVA-31 cells. This could reflect either the difference in apoptotic pathways employed by different cell types or the absence of certain factors required for the protective effect of Akt. In particular, human prostate cancer cell lines have scores of chromosomal deletions and rearrangements (64), so that LNCaP and PC-3 differ in much more than Akt levels.

It has been reported that short term (3–7-h) treatment of human keratinocytes (52), HeLa and Kym-1 cells (19) with cycloheximide significantly reduces the level of cellular cFLIP protein. Since upon overexpression cFLIP is capable of inhibiting Fas-mediated apoptosis (33, 34), it has been suggested that protein synthesis inhibitors sensitize cells to TRAIL by down-regulating cFLIP. To examine this hypothesis, we tested the level of various splice variants of cFLIP (FLIP<sub>L</sub>, FLIP $\gamma$ , and FLIP $\delta$ ) in LNCaP cells and found that neither cycloheximide nor wortmannin treatment affected cFLIP levels after as long as 16 h of treatment. These data are consistent with our observation on renal carcinoma cells (65) and published results on

Kaposi's sarcoma cells (17) in which that inhibition of protein synthesis sensitized cells to TRAIL without affecting the expression of cFLIP proteins. Thus, mediators of the PI 3-kinase-dependent blockage of TRAIL-induced BID cleavage and apoptosis in LNCaP cells still await identification and characterization.

**Acknowledgments**—We thank Dr. Ralph Buttyan (Columbia Presbyterian Medical Center, New York, NY) for Bcl-2-overexpressing LNCaP cells, and we thank Dr. Richard A. Roth (Stanford University School of Medicine, Stanford, CA), Dr. Joseph Biggs, and other members of Kraft laboratory for helpful discussions. We appreciate the excellent technical assistance of Sarah Winbourn.

## REFERENCES

- Wiley, S. R., Schooley, K., Smolak, P. J., Din, W. S., Huang, C. P., Nicholl, J. K., Sutherland, G. R., Smith, T. D., Rauch, C., Smith, C. A., and Goodwin, R. G. (1995) *Immunity* **3**, 673–682
- Pitti, R. M., Marsters, S. A., Ruppert, S., Donahue, C. J., Moore, A., and Ashkenazi, A. (1996) *J. Biol. Chem.* **271**, 12687–12690
- Schulze-Osthoff, K., Ferrari, D., Los, M., Wesselborg, S., and Peter, M. E. (1998) *Eur. J. Biochem.* **254**, 439–459
- Ashkenazi, A., and Dixit, V. M. (1998) *Science* **281**, 1305–1308
- Walczak, H., and Krammer, P. H. (2000) *Exp. Cell Res.* **256**, 58–66
- Griffith, T. S., and Lynch, D. H. (1998) *Curr. Opin. Immunol.* **10**, 559–563
- Golstein, P. (1997) *Curr. Biol.* **7**, R750–R753
- Snell, V., Clodi, K., Zhao, S., Goodwin, R., Thomas, E. K., Morris, S. W., Kadin, M. E., Cabanillas, F., Andreeff, M., and Younes, A. (1997) *Br. J. Haematol.* **99**, 618–624
- Ashkenazi, A., Pai, R. C., Fong, S., Leung, S., Lawrence, D. A., Marsters, S. A., Blackie, C., Chang, L., McMurtry, A. E., Hebert, A., DeForge, L., Koumenis, I. L., Lewis, D., Harris, L., Bussiere, J., Koeppen, H., Shahrokhi, Z., and Schwall, R. H. (1999) *J. Clin. Invest.* **104**, 155–162
- Walczak, H., Miller, R. E., Ariail, K., Gliniak, B., Griffith, T. S., Kubin, M., Chin, W., Jones, J., Woodward, A., Le, T., Smith, C., Smolak, P., Goodwin, R. G., Rauch, C. T., Schuh, J. C., and Lynch, D. H. (1999) *Nat. Med.* **5**, 157–163
- Keane, M. M., Ettenberg, S. A., Nau, M. M., Russell, E. K., and Lipkowitz, S. (1999) *Cancer Res.* **59**, 734–741
- Vassalli, P. (1992) *Annu. Rev. Immunol.* **10**, 411–452
- Nagata, S. (1997) *Cell* **88**, 355–365
- Jo, M., Kim, T. H., Seol, D. W., Esples, J. E., Dorko, K., Billiar, T. R., and Strom, S. C. (2000) *Nat. Med.* **6**, 564–567
- Griffith, T. S., Chin, W. A., Jackson, G. C., Lynch, D. H., and Kubin, M. Z. (1998) *J. Immunol.* **161**, 2833–2840
- Muhlenbeck, F., Haas, E., Schwenzler, R., Schubert, G., Grell, M., Smith, C., Scheurich, P., and Wajant, H. (1998) *J. Biol. Chem.* **273**, 33091–33098
- Mori, S., Murakami-Mori, K., Nakamura, S., Ashkenazi, A., and Bonavida, B. (1999) *J. Immunol.* **162**, 5616–5623
- Rieger, J., Naumann, U., Glaser, T., Ashkenazi, A., and Weller, M. (1998) *FEBS Lett.* **427**, 124–128
- Wajant, H., Haas, E., Schwenzler, R., Muhlenbeck, F., Kreuz, S., Schubert, G., Grell, M., Smith, C., and Scheurich, P. (2000) *J. Biol. Chem.* **275**, 24357–24366
- Bretz, J. D., Rymaszewski, M., Arscott, P. L., Myc, A., Ain, K. B., Thompson, N. W., and Baker, J. R., Jr. (1999) *J. Biol. Chem.* **274**, 23627–23632
- Kischkel, F. C., Hellbardt, S., Behrmann, I., Germer, M., Pawlita, M., Krammer, P. H., and Peter, M. E. (1995) *EMBO J.* **14**, 5579–5588
- Medema, J. P., Scaffidi, C., Kischkel, F. C., Shevchenko, A., Mann, M., Krammer, P. H., and Peter, M. E. (1997) *EMBO J.* **16**, 2794–2804
- Chaudhary, P. M., Eby, M., Jamin, A., Bookwalter, A., Murray, J., and Hood, L. (1997) *Immunity* **7**, 821–830
- Schneider, P., Thome, M., Burns, K., Bodmer, J. L., Hofmann, K., Kataoka, T., Holler, N., and Tschopp, J. (1997) *Immunity* **7**, 831–836
- Bodmer, J. L., Holler, N., Reynard, S., Vinciguerra, P., Schneider, P., Juo, P., Blenis, J., and Tschopp, J. (2000) *Nat. Cell Biol.* **2**, 241–243
- Srinivasula, S. M., Ahmad, M., Fernandes-Alnemri, T., Litwack, G., and Alnemri, E. S. (1996) *Proc. Natl. Acad. Sci. U. S. A.* **93**, 14486–14491
- Muzio, M., Salvesen, G. S., and Dixit, V. M. (1997) *J. Biol. Chem.* **272**, 2952–2956
- Luo, X., Budihardjo, I., Zou, H., Slaughter, C., and Wang, X. (1998) *Cell* **94**, 481–490
- Li, H., Zhu, H., Xu, C. J., and Yuan, J. (1998) *Cell* **94**, 491–501
- Scaffidi, C., Fulda, S., Srinivasan, A., Friesen, C., Li, F., Tomaselli, K. J., Debatin, K. M., Krammer, P. H., and Peter, M. E. (1998) *EMBO J.* **17**, 1675–1687
- Ashkenazi, A., and Dixit, V. M. (1999) *Curr. Opin. Cell Biol.* **11**, 255–260
- Tollefson, A. E., Hermiston, T. W., Lichtenstein, D. L., Colle, C. F., Tripp, R. A., Dimitrov, T., Toth, K., Wells, C. E., Doherty, P. C., and Wold, W. S. (1998) *Nature* **392**, 726–730
- Kataoka, T., Schroter, M., Habne, M., Schneider, P., Irmeler, M., Thome, M., Froelich, C. J., and Tschopp, J. (1998) *J. Immunol.* **161**, 3936–3942
- Scaffidi, C., Schmitz, I., Krammer, P. H., and Peter, M. E. (1999) *J. Biol. Chem.* **274**, 1541–1548
- Deveraux, Q. L., and Reed, J. C. (1999) *Genes Dev.* **13**, 239–252
- Hedlund, T. E., Duke, R. C., Schleicher, M. S., and Miller, G. J. (1998) *Prostate* **36**, 92–101
- Raffo, A. J., Perlman, H., Chen, M. W., Day, M. L., Streitman, J. S., and Buttyan, R. (1995) *Cancer Res.* **55**, 4438–4445
- Gleeson, M. A., White, C. E., Meiningner, D. P., and Komives, E. A. (1998)

- Methods Mol. Biol.* **103**, 81-94
39. Bossy-Wetzell, E., Newmeyer, D. D., and Green, D. R. (1998) *EMBO J.* **17**, 37-49
40. Carson, J. P., Kulik, G., and Weber, M. J. (1999) *Cancer Res.* **59**, 1449-53
41. Crouzet, J., Naudin, L., Orsini, C., Vigne, E., Ferrero, L., Le Roux, A., Benoit, P., Latta, M., Torrent, C., Branellec, D., Deneffe, P., Mayaux, J. F., Perricaudet, M., and Yeh, P. (1997) *Proc. Natl. Acad. Sci. U. S. A.* **94**, 1414-1419
42. Vlietstra, R. J., van Alewijk, D. C., Hermans, K. G., van Steenbrugge, G. J., and Trapman, J. (1998) *Cancer Res.* **58**, 2720-2723
43. Di Cristofano, A., and Pandolfi, P. P. (2000) *Cell* **100**, 387-90
44. Wymann, M. P., Bulgarelli-Leva, G., Zvelebil, M. J., Pirola, L., Vanhasebroeck, B., Waterfield, M. D., and Panayotou, G. (1996) *Mol. Cell. Biol.* **16**, 1722-1733
45. Budavari, S. (ed) (1989) *The Merck Index*, 11th Ed., p. 1585, Merck, Rahway, NJ
46. Walker, E. H., Pacold, M. E., Perisic, O., Stephens, L., Hawkins, P. T., Wymann, M. P., and Williams, R. L. (2000) *Mol. Cell* **6**, 909-919
47. Duke, R. C., Witter, R. Z., Nash, P. B., Young, J. D., and Ojcius, D. M. (1994) *FASEB J.* **8**, 237-246
48. Datta, S. R., Dudek, H., Tao, X., Masters, S., Fu, H., Gotoh, Y., and Greenberg, M. E. (1997) *Cell* **91**, 231-241
49. Kennedy, S. G., Kandel, E. S., Cross, T. K., and Hay, N. (1999) *Mol. Cell. Biol.* **19**, 5800-5810
50. Cardone, M. H., Roy, N., Stennicke, H. R., Salvesen, G. S., Franke, T. F., Stanbridge, E., Frisch, S., and Reed, J. C. (1998) *Science* **282**, 1318-1321
51. Deveraux, Q. L., Leo, E., Stennicke, H. R., Welsh, K., Salvesen, G. S., and Reed, J. C. (1999) *EMBO J.* **18**, 5242-5251
52. Leverkus, M., Neumann, M., Mengling, T., Rauch, C. T., Brocker, E. B., Krammer, P. H., and Walczak, H. (2000) *Cancer Res.* **60**, 553-559
53. Tschopp, J., Irmiler, M., and Thome, M. (1998) *Curr. Opin. Immunol.* **10**, 552-558
54. Uslu, R., Borsellino, N., Frost, P., Garban, H., Ng, C. P., Mizutani, Y., Beldegrun, A., and Bonavida, B. (1997) *Clin. Cancer Res.* **3**, 963-972
55. Datta, S. R., Brunet, A., and Greenberg, M. E. (1999) *Genes Dev.* **13**, 2905-2927
56. Hausler, P., Papoff, G., Eramo, A., Reif, K., Cantrell, D. A., and Ruberti, G. (1998) *Eur. J. Immunol.* **28**, 57-69
57. Rohn, J. L., Hueber, A. O., McCarthy, N. J., Lyon, D., Navarro, P., Burgering, B. M., and Evan, G. I. (1998) *Oncogene* **17**, 2811-2818
58. Huang, D. C., Hahne, M., Schroeter, M., Frei, K., Fontana, A., Villunger, A., Newton, K., Tschopp, J., and Strasser, A. (1999) *Proc. Natl. Acad. Sci. U. S. A.* **96**, 14871-14876
59. Gross, A., Yin, X. M., Wang, K., Wei, M. C., Jockel, J., Milliman, C., Erdjument-Bromage, H., Tempst, P., and Korsmeyer, S. J. (1999) *J. Biol. Chem.* **274**, 1156-63
60. Kohn, A. D., Summers, S. A., Birnbaum, M. J., and Roth, R. A. (1996) *J. Biol. Chem.* **271**, 31372-31378
61. Ozes, O. N., Mayo, L. D., Gustin, J. A., Pfeffer, S. R., Pfeffer, L. M., and Donner, D. B. (1999) *Nature* **401**, 82-85
62. Romashkova, J. A., and Makarov, S. S. (1999) *Nature* **401**, 86-90
63. Kops, G. J., and Burgering, B. M. (1999) *J. Mol. Med.* **77**, 656-665
64. Webber, M. M., Bello, D., and Quader, S. (1997) *Prostate* **30**, 58-64
65. Pawlowski, J. E., Nesterov, A., Scheinman, R. I., Johnson, T. R., and Kraft, A. S. (2001) *Anticancer Res.* **20**, 4243-4256

Brian Fouty, MD  
University of Colorado Health Science Center

**TRAIL induces apoptosis in "LAM"- like cells**

Xiaojun Lu, Marloes Hoedt-Miller, **Brian Fouty** and David Rodman  
Center for human genetic lung diseases, Department of Medicine, University of Colorado Health Science Center, Denver, CO 80262

TRAIL (TNF related apoptosis inducing ligand) is a proapoptotic cytokine that has been shown to induce apoptosis differentially in tumor cells but not normal cells. Studies of TRAIL in a variety of tumor cell lines strongly support the role of TRAIL as a valuable candidate for tumor treatment. As no established human "LAM" cell lines are available at present, we used two "LAM" like cell lines to study the effect of TRAIL. One is rat TSC2-/- smooth muscle cell line ELT3; another is human angiomyolipoma SV7 cell line. AnnexinV-PI flow cytometry analysis showed that TRAIL induced apoptosis in both cell lines but not in their normal counterparts. As low as 100ng/ml TRAIL caused apoptosis in human angiomyolipoma cells, Caspase 8 and Caspase 3 were cleaved after 4 hours TRAIL treatment. DNA fragmentation occurred after 24 hour treatment. Normal human smooth muscle cells were unaffected by TRAIL treatment at comparable doses. TRAIL also induced apoptosis in rat ELT3 cell line, but as high as 800ng/ml TRAIL and 48 hours were required for apoptosis to occur by MTT assay. Annexin-V-PI flow cytometry analysis showed that cycloheximide greatly enhanced TRAIL induced apoptosis in ELT3 cells, suggesting inhibitors of TRAIL-induced apoptosis may be concomitantly induced by TRAIL in ELT3 cells. While these studies have uncertain relevance to "authentic" LAM cells, they raise the possibility that TRAIL could be a novel, selective chemotherapeutic agent in LAM.