

Award Number: DAMD17-01-1-0572

TITLE: Prognostic Value of Telomere DNA Content in Invasive Breast Cancer

PRINCIPAL INVESTIGATOR: Jeffrey K. Griffith, Ph.D.

CONTRACTING ORGANIZATION: University of New Mexico Health Sciences Center
Albuquerque, New Mexico 87131-5041

REPORT DATE: June 2002

TYPE OF REPORT: Final

PREPARED FOR: U.S. Army Medical Research and Materiel Command
Fort Detrick, Maryland 21702-5012

DISTRIBUTION STATEMENT: Approved for Public Release;
Distribution Unlimited

The views, opinions and/or findings contained in this report are those of the author(s) and should not be construed as an official Department of the Army position, policy or decision unless so designated by other documentation.

195

REPORT DOCUMENTATION PAGE

Form Approved
OMB No. 074-0188

Public reporting burden for this collection of information is estimated to average 1 hour per response, including the time for reviewing instructions, searching existing data sources, gathering and maintaining the data needed, and completing and reviewing this collection of information. Send comments regarding this burden estimate or any other aspect of this collection of information, including suggestions for reducing this burden to Washington Headquarters Services, Directorate for Information Operations and Reports, 1215 Jefferson Davis Highway, Suite 1204, Arlington, VA 22202-4302, and to the Office of Management and Budget, Paperwork Reduction Project (0704-0188), Washington, DC 20503

1. AGENCY USE ONLY (Leave blank)		2. REPORT DATE June 2002	3. REPORT TYPE AND DATES COVERED Final (1 Jun 01 - 31 May 02)	
4. TITLE AND SUBTITLE Prognostic Value of Telomere DNA Content in Invasive Breast Cancer			5. FUNDING NUMBERS DAMD17-01-1-0572	
6. AUTHOR(S) Jeffrey K. Griffith, Ph.D.				
7. PERFORMING ORGANIZATION NAME(S) AND ADDRESS(ES) University of New Mexico Health Sciences Center Albuquerque, New Mexico 87131-5041 E-Mail: Jkgriffith@salud.unm.edu			8. PERFORMING ORGANIZATION REPORT NUMBER	
9. SPONSORING / MONITORING AGENCY NAME(S) AND ADDRESS(ES) U.S. Army Medical Research and Materiel Command Fort Detrick, Maryland 21702-5012			10. SPONSORING / MONITORING AGENCY REPORT NUMBER	
11. SUPPLEMENTARY NOTES				
12a. DISTRIBUTION / AVAILABILITY STATEMENT Approved for Public Release; Distribution Unlimited			12b. DISTRIBUTION CODE	
13. ABSTRACT (Maximum 200 Words) Telomeres, which are specialized protein-nucleic acid complexes that protect the ends of chromosomes, are shortened each time a cell divides. Although the mechanisms that drive cancer initiation and progression are not known, genomic instability occurs in most tumors and is correlated with shortened telomeres. The loss of growth control in tumor cells results in excessive telomere shortening and, by extension, phenotypic variability. We hypothesized, therefore, that very short telomeres would facilitate progression to a metastatic phenotype and, therefore, that telomere DNA content (TC), a proxy for telomere length, would predict clinical outcome in breast cancer. Patient histories and tissues were obtained from the New Mexico Tumor Registry. TC was measured in 38 breast tumors and 38 paired specimens of tumor-associated, histologically-normal stroma. In tumor tissues, Kaplan-Meier analysis demonstrated that reduced TC was associated with disease recurrence or death and that high TC was associated with disease-free survival ($p=0.01$). Unexpectedly, there was a similar association between TC and clinical outcome in the tumor-associated stroma ($p=0.001$). These findings show that TC in both breast tumors and tumor-associated, normal stroma predicts clinical outcome. This implies that telomere length is a characteristic of the cells' microenvironment, rather than a consequence of tumors' proliferation.				
14. SUBJECT TERMS breast cancer, telomere, DNA, prognosis, genomic instability, cancer initiation, metastatic phenotype			15. NUMBER OF PAGES 42	
			16. PRICE CODE	
17. SECURITY CLASSIFICATION OF REPORT Unclassified	18. SECURITY CLASSIFICATION OF THIS PAGE Unclassified	19. SECURITY CLASSIFICATION OF ABSTRACT Unclassified	20. LIMITATION OF ABSTRACT Unlimited	

NSN 7540-01-280-5500

Standard Form 298 (Rev. 2-89)
Prescribed by ANSI Std. Z39-18
298-102

Table of Contents

Cover	1
SF 298	2
Table of Contents	3
Introduction	4
Body	4
Key Research Accomplishments	6
Reportable Outcomes	6
Conclusions	7
References	7
Appendices	7

20021114 261

INTRODUCTION

The overall 10-year survival rate for breast cancers is no better than 50%, with recurrence occurring even after 10 years. Therefore, the development of new markers that identify the subset of patients at high risk for disease recurrence, coupled with aggressive therapeutic strategies, could improve long term survival. The genetic differences between tumors that have high and low chances of metastasis and recurrence are not known. However, genetic instability is a poor prognostic factor in breast carcinoma, implying that cellular processes that lead to the gain, loss, or rearrangement of genomic DNA are important in the evolution of tumor cells with a high risk of metastasis and recurrence (Duesberg et al, 1998). Telomeres are protein-DNA complexes that cap the ends of linear chromosomes, protecting them from degradation and fusion (Allsop et al, 1995; Biessmann and Mason, 1992; Blackburn 2000). Shortening of telomeres, the structures that protect the ends of human chromosomes from damage, is one mechanism that has been proposed to drive cancer cell evolution. A number of processes, both stochastic and abrupt, lead to the cumulative reduction of telomere length and ultimately cell cycle arrest or apoptosis (Allsop et al, 1995; Blackburn 2000, Bisseman and Mason, 1992). Some cells, including cancer progenitor cells, are able to up regulate telomerase, the enzyme that adds telomere repeats, and by pass cell cycle arrest. Interestingly, telomerase does not usually lengthen telomeres in cancer cells; instead it maintains them at the length when telomerase is upregulated (Blackburn, 2000; Autexier and Greider, 1996, Blasco et al, 1996).

The purpose of this study is to test the hypothesis that telomere DNA content predicts clinical outcome, thereby differentiating patients with aggressive metastatic breast carcinoma from those with a less aggressive localized disease.

BODY

Tasks:

The agreed upon specific aim to be completed under the Concept Award was to perform a preliminary, retrospective investigation of the relationship between telomere DNA content and survival in invasive breast carcinoma.

Progress Relative to Tasks:

A study population of 62 women diagnosed with breast cancer prior to 1995 was identified in cooperation with the New Mexico Tumor Registry (NMTR). The study population was selected such that approximately half of the women died of metastatic breast cancer, although these women had similar prognostic markers at the time of diagnosis as the control group who survived eight years or greater without signs of disease recurrence. Abstracted patient files were reviewed and available vital statistics were recorded including: age at diagnosis, tumor grade and size, estrogen/progesterone receptor status, treatment and length of survival or date and cause of death. Archival paraffin-embedded tumor was obtained for 48 women. For 34 of these women it was also possible to obtain genetically matched tumor-adjacent normal tissue.

Tissue type and tumor grade were confirmed histologically by Dr Nancy Joste, Department of Pathology, University of New Mexico School of Medicine. DNA was extracted from a total of 96 paraffin-embedded blocks including 48 tumor and 34 tumor-adjacent normal tissues using the Qiagen Qiamp Tissue Kit (Qiagen). Purified DNA was quantified with a commercial fluorescence-based DNA detection reagent (Picogreen, Molecular Bioprobes, Inc). Telomere DNA contents (TC) were determined

using a slot blot-based approach as described (Fordyce et al, in press). Briefly, DNA is denatured, fixed to a nylon membrane and probed with a telomere specific probe end labeled with fluorescein. An antibody conjugated to alkaline phosphatase detects the fluorescein antigen. Addition of the substrate, CDP-Star (Applied Biosystems) produces light. Blots are exposed to film, and the digitized images are quantitated with Nucleotech Gel Expert Software 4.0 (Nucleotech). TC in tumor and tumor-adjacent tissues is expressed as fraction of the placental control run on each blot. We analyzed TC in a total of 48 breast tumors, comprising two overlapping breast study groups. The first group was composed of paraffin-embedded tumor specimens from 28 women. These tumors were selected so as to have a

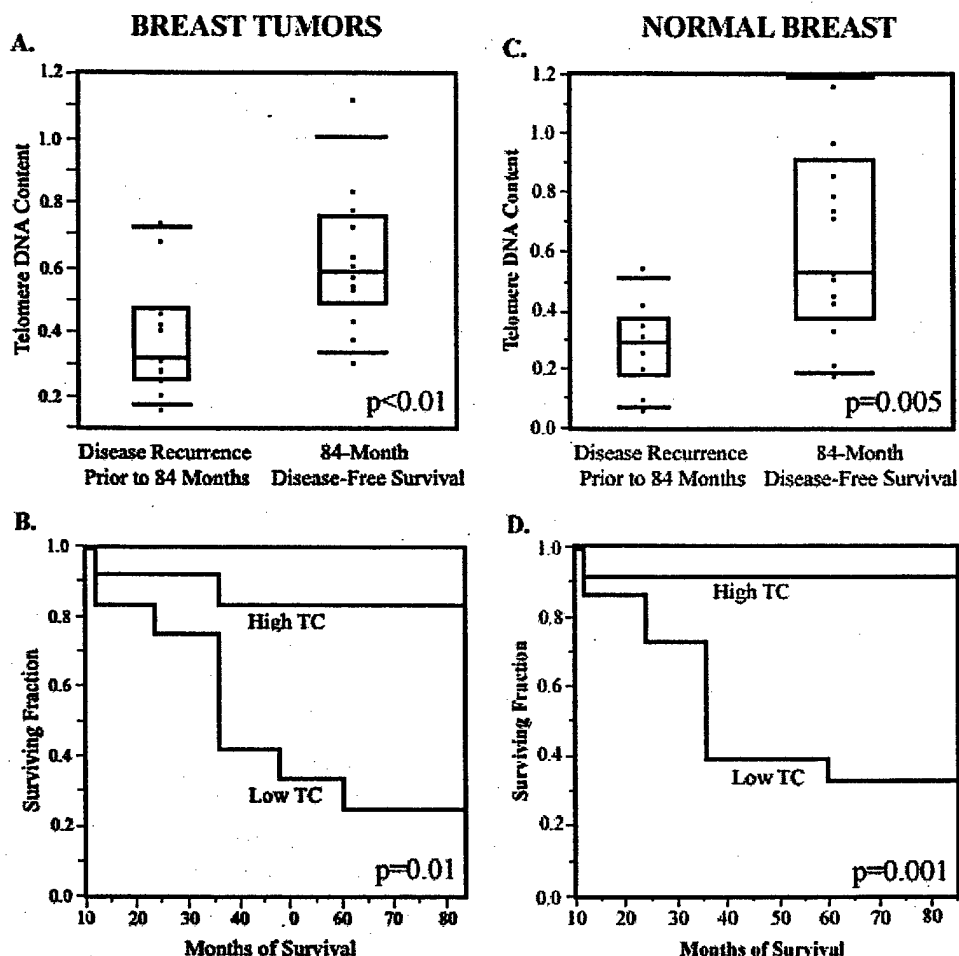


Figure 1: Telomere DNA Content in Tumor and Tumor-Adjacent Normal Breast Tissue. Data from breast tumors are shown in panels A and B, tumor-adjacent, genetically matched normal breast tissues are shown in panels C and D. In panels A and C, breast tissues were divided into two groups, recurrent and disease-free, based on patient outcome 84 months after surgery. P values were calculated by Wilcoxon-Rank Sums analysis. Box plots show patients outcome on the X-axis and TC, as a fraction of the placental control, on the y-axis. In panels B and D breast tissues were divided into groups, high and low, based on median TC. TC greater than or equal to the median is defined as High TC and TC less than the median is defined as Low TC. P values were calculated by Kaplan-Meier analysis. Plots show months of disease-free survival up to 84 months on the X-axis and surviving fraction on the y-axis.

mixture of positive and negative prognostic markers. For example, tumors were typically estrogen and progesterone receptor-positive, but also large with nodal involvement. Tumors were stratified by median TC. TC was not associated with ethnicity, age at diagnosis, tumor size, tumor grade, nodal involvement or estrogen- or progesterone-receptor status (data not shown). However, as shown in Figure 1A, reduced TC was associated with patients who developed recurrent breast cancer within 84 months of surgery ($p < 0.01$). Moreover, Kaplan-Meier analysis demonstrated that telomere DNA content was associated with clinical outcome (Figure 1B, $p = 0.01$). The relative risk of breast cancer recurrence was nine times greater in women whose tumors had TC less than the median. To confirm and extend the observed relationship between TC and clinical outcome, an additional 20 randomly selected patients were added to the initial study group. Consistent with our preliminary observation, TC also predicted clinical outcome in the expanded group of patients whose tumors' characteristics were more diverse (data not shown, $p = 0.03$.)

In addition to the breast tumors, we analyzed TC in a total of 34 paired tumor-adjacent normal paraffin-embedded breast tissues. Tumor-adjacent normal breast tissues were stratified by median TC. TC of the tumor-adjacent normal tissue was not associated with patients' ethnicity, age at diagnosis, tumor size, tumor grade, nodal involvement or estrogen- or progesterone-receptor status (data not shown). However, remarkably, as shown in Figure 1C, reduced TC was associated with patients who developed recurrent breast cancer within 84 months of surgery ($p = 0.005$). Moreover, Kaplan-Meier analysis demonstrated that telomere DNA content in tumor-adjacent normal breast was associated with clinical outcome (Figure 1D, $p = 0.001$). *Collectively, these findings demonstrate that TC is an informative prognostic marker in breast tumors and surprisingly in tumor-adjacent normal tissue, and that changes in telomere length may occur early in the neoplastic process, even prior to phenotypic changes.*

KEY RESEARCH ACCOMPLISHMENTS

- Identified a study population, half of whom survive greater than eight years without disease recurrence and half of whom died from metastatic breast cancer. This study population had similar prognostic markers at the time of diagnosis.
- Purified and quantitated genomic DNA from tumor normal pairs of the first study population.
- Telomere DNA content has been analyzed in 48 tumors and 34 tumor-adjacent normal tissues.
- Identified a second study population, whose tissues have been frozen, thus preserving the integrity of tumor RNA.

REPORTABLE OUTCOMES

- Two databases have been produced that contain anonymous patient histories, including age at diagnosis, treatments, tumor grade, estrogen and progesterone receptor status, tumor size, length of disease free survival or date and cause of death and diagnosis.
- DNA and RNA banks from tumor and normal breast tissues have been produced.
- These data were presented at the FASEB meeting in New Orleans in April of 2002.
- One paper is in press, one paper has been submitted for publication and it is anticipated that one other will be produced from this data.

CONCLUSIONS

- Telomere DNA content is a novel and independent prognostic marker in breast tumors and tumor-adjacent normal tissue. These data further imply that reduced telomere DNA content in tumor-adjacent normal tissue is associated with a stromal environment that either precedes, or is induced by the growth of aggressive, lethal tumors.

REFERENCES

- Allsop, R.C., Chang, E., Kashefi-Aazam, M., Rogaev, E.I., Piatyszek, M.A. and Shay, J.W. (1995) Telomere shortening is associated with cell division in vitro and in vivo. *Exp. Cell Research* 220 (1) 194-200.
- Autexier, C. and Greider, C.W. (1996) Telomerase and cancer: revisiting the telomere hypothesis. *Trends in Biochemical Sciences* 21 (10) 387-391.
- Blackburn, E.H. (2000) Telomeres and Telomerase *Keio Journal of Medicine* 49(2) 59-65.
- Blasco, M.A., Rizen, M., Greider, C.W. and Hanahan, D. (1996) Differential regulation of telomerase activity and telomerase RNA during multistage tumorigenesis. *Nature Genetics* 12 (2) 200-204.
- Bieche, I., Nogues, C., Paradis, V., Olivi, M., Bedossa, P., Lidereau, R and Vidaud, M. (2000) Quantification of hTERT gene expression in sporadic breast tumors with real-time reverse transcription polymerase chain reaction assay *Clinical Cancer Research* 6 (2) 452-459.
- Bissemann, H. and Mason, J.M. (1992) Genetics and molecular biology of telomeres *Advances in Genetics* 30 185-249.
- Duesberg, P., Rausch, C., Rasnick, D., Hehlmann, R. (1998) Genetic instability in cancer cells is proportional to their degree of aneuploidy *Proceedings of the national academy of sciences, USA* 95 (23) 13692-13697.

APPENDICES

Manuscripts in Press:

Chemiluminescent Measurement of Telomere DNA Content in Biopsies
Colleen A. Fordyce, Christopher M. Heaphy and Jeffrey K. Griffith

Manuscripts Submitted:

Telomere DNA Content Predicts Clinical Outcome in Breast and Prostate Cancer
Colleen A. Fordyce, Aroop Mangalik, Nancy E. Joste and Jeffrey K. Griffith

IN PRESS: BIOTECHNIQUES

Chemiluminescent Measurement of Telomere DNA Content in Biopsies

Colleen A. Fordyce, Christopher M. Heaphy and Jeffrey K. Griffith
Department of Biochemistry and Molecular Biology

University of New Mexico Health Sciences Center, Albuquerque, NM 87131-5221

Keywords: telomere, chemiluminescence, biopsy

Address Correspondence to:

Jeffrey Griffith, Ph.D.

Department of Biochemistry and Molecular Biology

BMSB 249

University of New Mexico School of Medicine

Albuquerque, NM 87131-5221

Phone: 505-272-3444

Fax: 505-272-6587

Email: jkgriiffith@salud.unm.edu

ABSTRACT

Telomeres are nucleoprotein complexes that protect the ends of chromosomes from fusion and degradation. They are typically shorter in tumor cells than in paired normal cells, and shorter telomeres are associated with poor outcome in cancer. We previously described a slot blot-based method for measuring telomere DNA content, a proxy for telomere length. Although this method represented an improvement over existing methods, its limit of sensitivity, 30 ng, was insufficient for use with biopsy or other scant tissues. Here we describe a chemiluminescent slot blot assay for telomere DNA content that has the sensitivity required for use with biopsy materials. Results obtained with DNA derived from human placental, HeLa, human peripheral blood lymphocytes, sham needle core prostate biopsies and archival prostatectomy tissues demonstrated that telomere DNA content can be reliably and reproducibly measured in 5 ng, and sometimes in as little as 2 ng of genomic DNA. Sham needle core prostate biopsy and prostatectomy specimens processed in parallel produced comparable results. The contribution of truncated telomeres in admixtures containing as much as 75% normal placental DNA could be established. We also demonstrated that treatment of tissue with formalin prior to DNA purification does not decrease the efficacy of the assay.

INTRODUCTION

Telomeres are nucleoprotein complexes that protect the ends of chromosomes from fusion and degradation (1,3,6,11-12). Since telomeres are shortened each time a cell divides (1,3,11,15), tumor cells typically have shorter telomeres than paired normal cells (1,3,6,16). Reduced telomere DNA content (or length) has been associated with aneuploidy, metastasis, grade, disease recurrence and survival (2,4-5,7-10,13-14,17). To validate the potential prognostic significance of telomere DNA content, it is necessary to measure telomere DNA content in relevant clinical specimens, particularly in biopsies.

We previously described a slot blot method for measuring telomere DNA content, a proxy for telomere length (5). In contrast to the commonly used Southern blotting method of measuring terminal telomere restriction fragments (TRFs) (1,10,13,16) the slot blot assay required less than 0.1 μg of genomic DNA and was insensitive to DNA breakage (5). Nevertheless, it lacked the sensitivity required for use with biopsy specimens and microdissected, or other very scant tissues; took 5-8 days to complete, and relied upon hybridization of a second centromere-specific, oligonucleotide to normalize for DNA quantity/load and reactivity. In addition to these limitations, the effects of formalin fixation and normal cell contamination in tumors were unknown. These factors limit the potential clinical utility of the slot blot assay for use with biopsy specimens.

To address these limitations, we developed a new chemiluminescent assay for measuring telomere DNA content that is both more sensitive and faster than previous methods. We also tested the assay's suitability for use with DNA purified from formalin-fixed tissue and admixtures of normal and tumor cells.

MATERIALS AND METHODS

DNA Isolation: DNA was purified from human placental tissue and cultured HeLa cells as previously described (5). Waste frozen human prostate tissue was obtained from the University of New Mexico Solid Tumor Facility. Sham needle-core biopsies were produced from the frozen prostate tissue using a 2 cm long 18-gauge needle core. Pieces (0.2-0.4 g) of human placental tissue were submerged in formalin (Sigma, St Louis, MO) for 0, 15, 30, 60, 120, 240 and 480 minutes at room temperature. The tissue was washed twice in 30 mls of phosphate buffered saline (Sigma, St Lois MO) to remove any residual formalin prior to DNA purification. DNA was purified from sham needle core biopsies and formalin-treated placenta using the Qiagen DNAeasy Kit and the manufacturer's protocol (Qiagen, Valencia, CA). The average yield of DNA from a 2 cm long, 18-gauge frozen needle core was 150 ng (n=9, SD 159 ng). DNA yield was not affected by formalin fixation. Archival paraffin-embedded prostatectomy tissue was obtained from the New Mexico Tumor Registry as approved by the Human Research Review Committee of the University of New Mexico. DNA was purified from archival paraffin embedded tissue as described above.

Quantification of DNA: Placenta, HeLa, sham needle core biopsy, and paraffin-embedded prostatectomy DNAs were quantitated with the fluorescent dye, PicoGreen (Molecular Probes, Eugene, OR), using a commercially available human genomic DNA purified from peripheral blood lymphocytes (Promega, Madison, WI) as a standardized control. PicoGreen was added to both the standard and purified DNAs, and excited at 480 nm, as described by the supplier. Fluorescence emission intensities were measured at 520 nm using a Luminescence Spectrometer LS50 (Perkin Elmer, Boston, MA). Concentrations of the DNA samples were calculated from the equation describing the best-fit line generated with the standardized control DNA.

Preparation and Hybridization of Slot Blots: Slot blots were prepared as described (5) with the following modifications. DNA was applied to Tropilon-Plus™ membranes (Tropix, Bedford, MA), air-dried and cross-linked with 1,200 mJ (UVP, Upland, CA). Following cross-linking, each blot was submerged in 0.25M sodium phosphate buffer, pH 7.2. Each blot was prehybridized in a 200 ml glass hybridization bottle (Bellco Glass, Vineland, NJ) for one hour at 60°C in 50 mls of hybridization buffer (7% SDS, 0.25M sodium phosphate buffer pH 7.2, 0.001M EDTA pH 8.0). Following prehybridization, the buffer was replaced with 50 mls of fresh hybridization solution containing 300 pmoles of telomere-specific, fluorescein 3' end-labeled probe [5' TTAGGG 3']₄ (IDT, Coralville, IA). Each blot was hybridized at 60°C for a minimum of 12 hours and a maximum of 16 hours. Following hybridization, the blot was washed twice at room temperature for 5 minutes in 30 mls of 2 X SSC (0.3M NaCl, 0.03M Na₃C₆H₅O₇-2H₂O), 1%SDS. The initial wash was followed by two high temperature washes at 60°C for 15-minute in 30 mls of preheated 1 X SSC, 1% SDS. Finally, the blot was washed twice at room temperature for 5 minutes in 30 mls of 1 X SSC. All washes were performed in glass hybridization bottles with constant agitation in a Bellco AutoBlot hybridization oven (Bellco Glass, Vineland, NJ).

Detection and Quantification of Telomere DNA: After hybridization, telomere DNA was quantitated using the Southern Star™ chemiluminescent kit as described by the supplier (Tropix, Bedford, MA). The blots were equilibrated for 5 minutes in two successive 20 ml washes of blocking buffer [PBS (0.058M Na₂HPO₄, 0.017M NaH₂PO₄-H₂O, 0.068M NaCl), 2% I-block reagent (Tropix, Bedford, MA), 0.1% Tween-20 (Sigma, St Lois, MO)]. Each blot was then

incubated separately for 45 minutes in 30 mls of blocking buffer at room temperature with constant agitation. The blocking buffer was discarded and replaced with 50 mls of blocking buffer containing 2 μ l of alkaline phosphatase-conjugated, anti-fluorescein antibody (Tropix, Bedford, MA). The blot was incubated for 30 minutes at room temperature with constant agitation, washed in 30 mls of fresh blocking buffer, and then washed three times for 5 minutes at room temperature in 30 mls of wash buffer (PBS, 0.1% Tween-20) with constant agitation.

The pH of the blot was optimized for alkaline phosphatase activity by incubating the blot twice for two minutes in 20 mls of 1 X assay buffer (Tropix, Bedford, MA). The surface of the blot was completely covered with approximately 4 mls of CDP-Star[®] chemiluminescent substrate (Tropix, Bedford, MA) and incubated for 5 minutes at room temperature (Figure 1A). Following incubation, CDP-Star[®] was wicked away, the blot was sealed in a plastic bag and exposed to Hyperfilm (Amersham Pharmacia Biotech, Buckinghamshire England) for 2 or 5 minutes.

Films were developed (Konica Medical Film Processor-model QX-70) and scanned (Hewlett-Packard ScanJet ADF). The intensity of the telomere hybridization signal was determined from the digitized images with Nucleotech Gel Expert Software 4.0 (Nucleotech, San Mateo, CA). Telomere content was determined by comparing the slope of the equation generated from DNA input versus relative signal from the placental standard to the samples at known concentration (e.g. Figure 1B).

RESULTS AND DISCUSSION

Sensitivity and Specificity: There was a linear relationship ($R^2=0.98-99$) between telomere DNA contents and inputs of 5 to 120 ng in human genomic DNAs purified from placenta, HeLa cells and peripheral blood lymphocytes. Telomere contents in the placenta and the peripheral blood lymphocyte DNAs, representative of normal somatic cells, were nearly identical (slopes= 923 vs 942 respectively). In contrast, the telomere content in HeLa DNA, representative of tumor cells, was significantly decreased (slope=353) (Figure 1B). Telomere DNA contents in genomic DNA isolated from sham needle core biopsies ranged from 48-100% of the placental control (Figure 1C). There was no signal when equivalent amounts of a non-specific plasmid DNA (pGEM®-easy vector, Promega, Madison, WI) was substituted for genomic DNA in the assay (data not shown).

Telomere Contents in Admixtures: Tumor and biopsy specimens typically contain mixtures of normal cells and tumor cells, whose telomeres differ in length. Thus, the observed telomere content of such a specimen reflects both the telomere contents and relative proportions of normal and tumor cells. The observed telomere content (TC_{obs}) can be expressed quantitatively by the following equation:

$$TC_{obs} = (TC_N)(\%N) + (TC_T)(\%T)$$

where TC_N and TC_T are the telomere contents in normal and tumor cells, respectively, and %N and %T are the percentages of normal and tumor cells in the specimen, respectively. Ideally, the

telomere content of tumor cells in mixed samples could be calculated with the following equation:

$$(TC_T) = [TC_{obs} - (TC_N)(\%N)]/(\%T)$$

when TC_{obs} , TC_N , and $\%T$ (defined by histopathological examination) are known. To validate this approach, telomere contents were measured in mixtures containing defined proportions of HeLa cell DNA, mimicking tumor cells, and placental DNA, mimicking normal cells (Figure 2). There was a linear and predictable relationship between the telomere contents and the relative proportions of HeLa and placenta DNA in each of the admixtures. Identical results were obtained when telomere contents were assayed in defined admixtures containing 30, 40, 50 or 60 ng of total genomic DNA (not shown). Thus, the contributions of the truncated HeLa cell telomeres in admixtures containing as much as 75% normal placental DNA can be defined.

Telomere DNA Content In Formalin Fixed Tissue: It is not uncommon for surgical and biopsy specimens to be stored in formalin for as long as 8 hours prior to embedding in paraffin. To determine whether formalin fixation affected the reliability of the telomere DNA content assay, human placenta was submerged in formalin for up to 8 hours at room temperature prior to DNA purification as shown in Figure 3. Telomere DNA contents measured in genomic DNA isolated from tissue treated with formalin were not different from the untreated control (slopes=768, 804 respectively). Telomere DNA content could also be assayed with DNA purified from paraffin embedded archival prostatectomy specimens (Figure 1A).

Conclusion: Although the reported associations between reduced telomere DNA content and several prognostic markers of cancer are provocative (2,4-5,7-10,13-14,17), prospective investigations with biopsy materials are necessary to establish the clinical relevance of telomere DNA content. Such investigations have not been possible with existing methods. We have developed a chemiluminescent assay for telomere DNA content that is particularly well-suited for analysis of biopsy or microdissected specimens. The assay, including DNA purification and quantification, can be completed in two days and requires as little as 2-5 ng of genomic DNA, the equivalent of approximately 285-715 diploid cells. This technique is at least ten times more sensitive and five times faster than existing methods. In addition, the assay is unaffected by standard formalin treatment and is informative for tumor tissues that contain up to 75% normal cells.

It is important to emphasize that telomere DNA contents determined by this method reflect the *average* telomere content in cells comprising the sample. It does not provide information about the variability of telomere DNA content on chromosomes within or between individual cells. However, with the assay's improved sensitivity, telomere DNA content could be measured in microdissected or flow sorted tumor cell sub-populations.

ACKNOWLEDGEMENTS

We are indebted to our colleagues, Dr. Nancy Joste from the University of New Mexico Department of Pathology and Dr. Lida Crooks from the Albuquerque Regional Administration of Veterans Affairs Medical Center Department of Pathology, Albuquerque New Mexico, for their invaluable assistance.

REFERENCES

1. **Allsopp, R.C., E. Chang, M. Kashefiaazam, E. I. Rogaev, M.A. Piatyszek, J.W. Shay and C.B. Harley.** 1995. Telomere shortening is associated with cell division *in vitro* and *in vivo*. *Exp. Cell Res.* 220:194-200.
2. **Bechter, O.E., W. Eisterer, G. Pall, W. Hilbe, T. Kuhr and J. Thaler.** 1998. Telomere length and telomerase activity predict survival in patients with B cell chronic lymphocytic leukemia. *Cancer Res.* 58(21):4918-4922.
3. **Biessmann H. and J.M Mason.** 1992. Genetics and molecular biology of telomeres. *Adv. Genet.* 30:185-249.
4. **Brummendorf, T.H., T.L. Holyoake, N. Rufer, M.J. Barnett, M. Schulzer, C.J. Eaves, A.C. Eaves and P.M. Lansdorp.** 2000. Prognostic implications of differences in telomere length between normal and malignant cells from patients with chronic myeloid leukemia measured by flow cytometry. *Blood* 95,6: 1883-1890.
5. **Bryant, J., K. Hutchings, R. Moyzis and J. Griffith.** 1997. Measurement of telomeric DNA content in human tissues. *BioTechniques.* 23:476-484.
6. **de Lange, T.** 1995. Telomere dynamics and genome instability in human cancer. *Telomeres* Cold Spring Harbor Press 265-293.
7. **Donaldson, L., C. Fordyce, F. Gilliland, A. Smith, R. Feddersen, N. Joste, R. Moyzis and J. Griffith.** 1999. Association between outcome and telomere DNA content in prostate cancer. *Journal of Urology.* 162:1788-1792.
8. **Griffith, J.K., J. Bryant, C. Fordyce, F. Gilliland, N. Joste and R. Moyzis.** 1999. Reduced telomere DNA content is correlated with genomic instability and metastasis in invasive human breast carcinoma. *Breast Cancer Research and Treatment* 54:59-64.

9. **Hirashama, T., T. Komiya, T. Nitta, Y. Takada, M. Kobayasi, N. Masuda, K. Matui, M. Takada, M. Kikui, T. Yasumitu, A. Ohna, K. Nakagawa, M. Fukuoka and I. Kawase.** 2000. Prognostic significance of telomeric repeat length alterations in pathological stage I-III non-small cell lung cancer. *Anticancer Res.* 20(3B):2181-2187.
10. **Hiyama, K., S. Ishioka, Y. Shirotnani, K. Inai, E. Hiyama, I. Murakami, T. Isobe, T. Inamizu and M. Yamakido.** 1995. Alterations in telomeric repeat length in lung cancer are associated with loss of heterozygosity in p53 and Rb. *Oncogene* 10:937-944.
11. **Levy, M.Z., R.C. Allsop, B.A. Futcher, C.W. Greider and C. Harley.** 1992. Telomere end replication problem and cell aging. *J. Mol Biol* 225:951-960.
12. **Moyzis, R.K., J.M. Buckingham, L.S. Cram, M. Dani, L.L., Deaven, M.D. Jones, J. Meyne, R.L. Ratliff and J.R. Wu.** 1988. A highly conserved repetitive DNA sequence, (TTAGGG)_n, present at the telomeres of human chromosomes. *Proc. Natl. Acad. Sci. USA* 85:6622-6626.
13. **Odagiri, E., N. Kanda, K. Jibiki, R. Demura, E. Aikawa and H. Demura.** 1994. Reduction of telomeric length and c-erb2 gene amplification in human breast cancer, fibroadenoma and gynecomastia. *Cancer* 73:2978-2984.
14. **Ohyashiki, J.H., H. Iwama, N. Yahata, K. Ando, S. Hayashi, J.W. Shay, and K. Ohyashiki.** 1999. Telomere stability is frequently impaired in high-risk groups of patients with myelodysplastic syndromes. *Clinl. Cancer Res.* 5:1155-1160.
15. **Olovnikov, A.M.** 1973. A theory of marginotomy. The incomplete copying of template margin in enzymic synthesis of polynucleotides and biological significance of the phenomenon. *J. Theor. Biol.* 41:181-190.

16. **Schmitt, H., N. Blin, H.Zankl and H. Scherthan.** 1994. Telomere length variation in normal and malignant human tissues. *Genes Chromosom. Cancer* 11:171-177.
17. **Takauchi, K., S. Tashiro, M. Ohtaki and N. Kamada.** 1994. Telomere reduction of specific chromosome translocation in acute myelocytic leukemia. *Japn. J. Cancer Res.* 85:127-130.

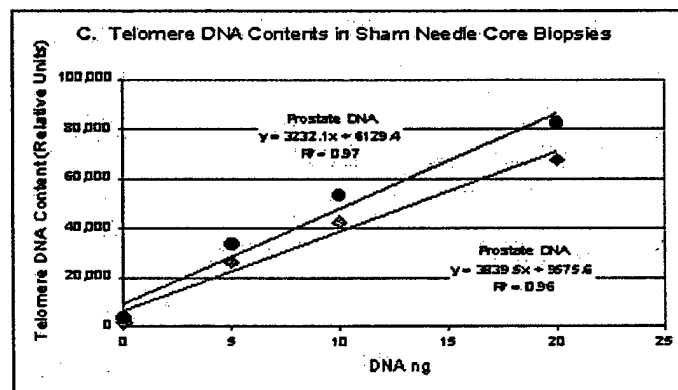
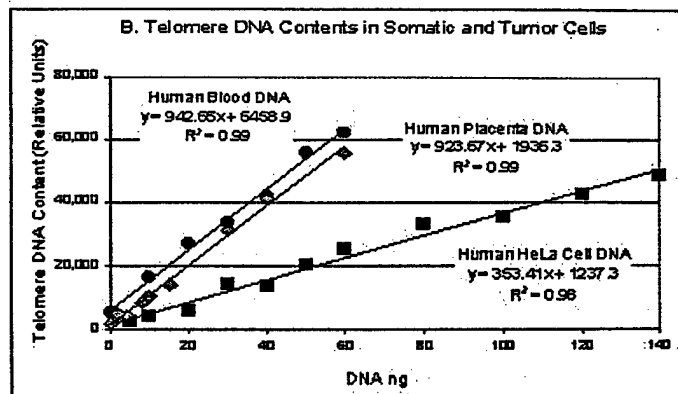
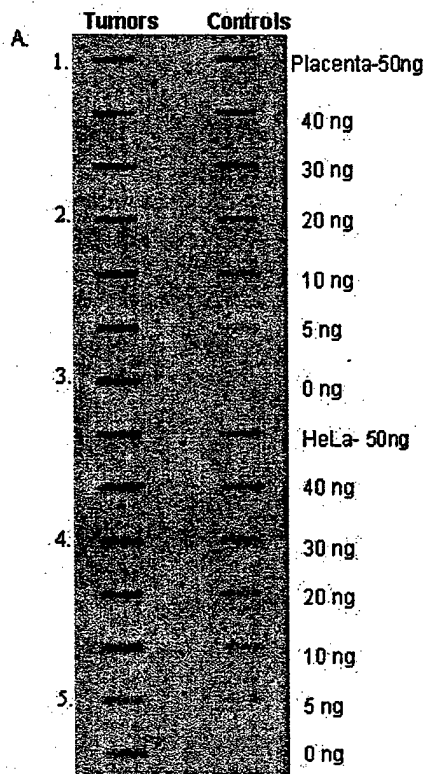


FIGURE 1.

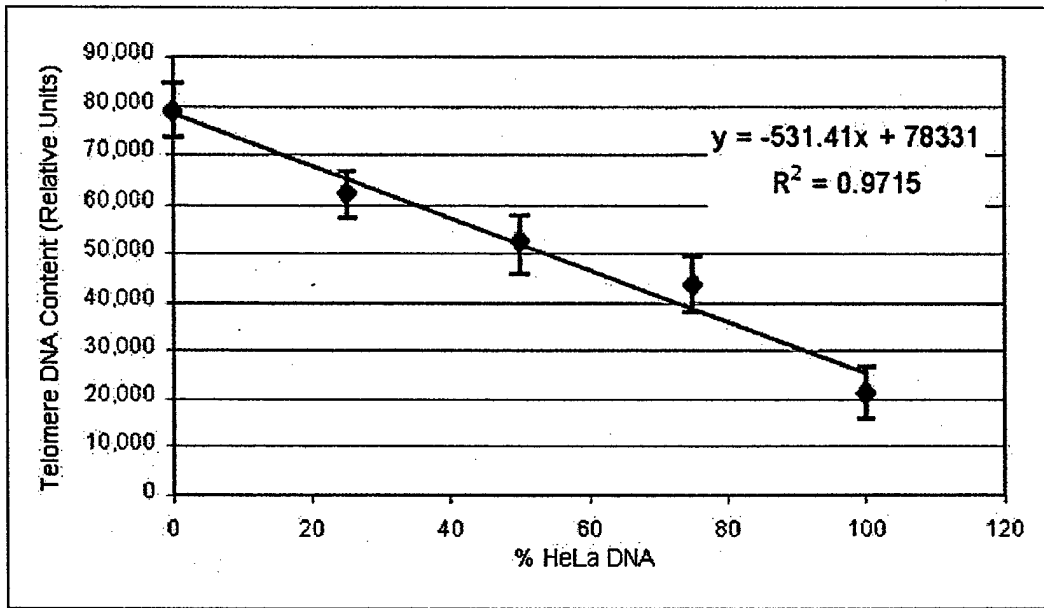


FIGURE 2

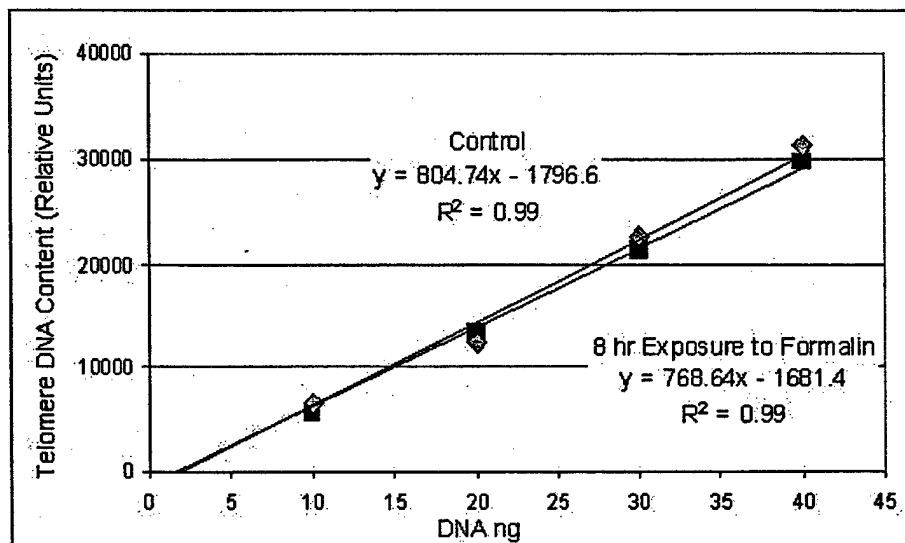


FIGURE 3

FIGURE LEGENDS

Figure 1. Sensitivity of Telomere DNA Content Assay. A: Representative slot blot showing placental, HeLa and five archival paraffin-embedded prostate tumor samples. Placenta and HeLa DNA concentrations range from 0-50 ng, tumor DNAs were analyzed in triplicate (one replicate, for sample 5, not shown) at 40 ng. B: Representative data demonstrating differential telomere DNA contents in normal somatic (human blood lymphocytes and placenta) and tumor (HeLa) cells. The slot blot was prepared and analyzed as described in Materials and Methods. C: Representative data demonstrating telomere DNA contents in sham needle core biopsies. Slopes, x-intercepts and correlation coefficients were calculated by linear regression.

Figure 2. Telomere Contents in DNA Admixtures. HeLa and placenta DNAs were mixed in the following proportions: 0%, 25%, 50%, 75% and 100% HeLa. Data shown represents telomere DNA contents measured in 60 ng of total genomic DNA analyzed in triplicate. The regression line and correlation coefficient were calculated as in Figure 1; error bars represent standard deviations of the means.

Figure 3. Effect of Formalin Exposure on Telomere Content Assay. Human placenta was placed in formalin for 0 to 8 hrs at room temperature. Telomere DNA contents were measured in DNA purified following tissue treatment with formalin. Identical results were obtained from all time points, data from 0 and 8 hrs is shown. See Figure 1 legend for additional details.

SUBMITTED

Telomere DNA Content Predicts Clinical Outcome in Breast and Prostate Cancer

Colleen A. Fordyce¹, Aroop Mangalik², Nancy E. Joste³ and Jeffrey K. Griffith¹

Departments of Biochemistry and Molecular Biology¹, Internal Medicine² and Pathology³
University of New Mexico School of Medicine

Key words: Telomere, Prognosis, Breast Cancer, Prostate Cancer, Genomic Instability, Outcome

Corresponding Author
Jeffrey K. Griffith, Ph.D.
Department of Biochemistry and Molecular Biology
University of New Mexico School of Medicine
BMSB Room 249
915 Camino de Salud
Albuquerque, New Mexico 87131
Phone: 505-272-3444
Fax: 505-272-6587
Email: jkg Griffith@salud.unm.edu

ABSTRACT

Background: Telomeres are protein-DNA complexes that stabilize the ends of chromosomes. Genomic instability, resulting from telomere shortening, creates phenotypic variability that may facilitate the progression to a metastatic phenotype. Thus, we hypothesized that telomere DNA content would predict clinical outcome in breast and prostate cancer.

Methods: Telomere DNA content was measured with a slot-blot based assay developed in our laboratory. Total telomere DNA content was analyzed in 48 breast and 51 prostate tumors identified by the New Mexico Tumor Registry. Patient histories included at least 84-months of follow-up, ethnicity, age at diagnosis, tumor grade or Gleason sum score, nodal involvement and several other accepted tumor markers. An initial breast study population was composed of 28 matched breast tumors from patients whose prognoses were ambiguous at diagnosis. This group was subsequently expanded by adding 20 randomly selected breast cancer patients. Statistical analysis was two-sided, used a 95% confidence interval and was performed with the Wilcoxon Rank sums and Kaplan-Meier tests.

Results: In the initial breast study population, reduced TC was associated with disease recurrence ($p < 0.01$) and poor clinical outcome ($p = 0.01$). These results were extended in the expanded breast study; reduced TC was again associated with poor clinical outcome ($p = 0.03$). In the prostate study, reduced TC was also associated with disease recurrence ($p = 0.01$) and poor clinical outcome ($p = 0.04$). TC was not associated with any of several accepted tumor markers either breast or prostate cancer.

Conclusions: Telomere DNA content has potential as an informative, independent prognostic marker in breast and prostate cancer.

INTRODUCTION

Currently available prognostic markers often fail to identify patients with lethal, metastatic tumors. Nodal involvement and either high tumor grade or moderate to high Gleason sum scores are currently the most informative prognostic markers for breast and prostate cancers, respectively (1-5). However, these markers often fail to discriminate between patients who will have favorable and poor clinical outcomes (1,3,5-9). Accordingly, many patients diagnosed with breast or prostate cancer receive aggressive therapies that may, in fact, be unnecessary. Thus, it is important to develop new prognostic markers that more accurately predict disease recurrence and survival. Recent reports demonstrate the feasibility of using microarray technologies to produce gene-expression signatures of aggressive tumors (10,11). However, the costs and complex data output of this technology presently precludes its use in most clinical laboratories. Alternatively, we have developed a simple, inexpensive assay for telomere DNA content (a proxy for telomere length). Here, we show that this assay can be used to predict clinical outcome in breast and prostate cancer.

Telomeres are specialized protein-nucleic acid structures located at the ends of eucaryotic chromosomes (12). Shortened telomeres are associated with genomic instability, including dicentric chromosome formation, chromosome translocation and loss of heterozygosity (13-16). These data demonstrate that telomeres play a critical role in protecting and stabilizing chromosome ends (17-19). Because of incomplete replication of DNA on the leading strand of the replication fork, telomeric DNA is lost each time a cell divides. Thus, cells with a higher proliferative history, like tumor cells, typically have shorter telomeres and are more likely to be genetically unstable (12,20,21). Therefore, we hypothesized that the telomere DNA in a tumor would presage a tumor's phenotypic variability and, hence, metastatic potential.

We have previously described a slot blot assay for telomere DNA content. Telomere DNA content is directly proportional to telomere length measured by Southern blotting, and thus serves as a proxy for telomere length (22). However, in contrast to Southern blotting (23,24), the slot blot assay requires less than 100 ng of genomic DNA and is insensitive to DNA breakage, making it ideal for retrospective studies of archival tissues (22). Moreover, we have shown that telomere DNA content measured in frozen tissues and formalin-fixed, paraffin-embedded tissues are comparable (22),(25). Using this assay, we previously reported that reduced telomere content was associated with aneuploidy and metastasis in breast cancer and with disease recurrence and survival in an initial prostate cancer study (26). However, the composition and small size of each cohort limited the significance that could be ascribed to these observations. To investigate the prognostic potential of telomere DNA content more thoroughly, we measured telomere DNA content in two distinct study populations comprised of 48 women with breast tumors and 51 men with prostate tumors.

MATERIALS AND METHODS

Study Populations The New Mexico Tumor Registry (NMTR) database links anonymous patient histories to archival cancer specimens through pathology reference numbers and dates of procedures as approved by the University of New Mexico Human Research Review Committee in accordance with all federal guidelines. A retrospective examination of anonymous records from the NMTR database identified a total of 48 women diagnosed with breast cancer, comprising two overlapping study groups. The first study group was composed of 28 women diagnosed with infiltrating breast cancer prior to 1994. Patients were carefully selected such that their tumors possessed both positive and negative prognostic markers, and as such, their possible outcome was ambiguous at diagnosis. Of the 28 women, 13 either died from or had recurrent breast cancer. Archival paraffin-embedded tumor tissues were obtained for each woman.

An expanded breast study group was composed of 48 women diagnosed with breast cancer prior to 1996, including the 28 women in the first group. No selection criteria, other than availability of frozen or paraffin-embedded tissue, were applied to the remaining 20 women in this group. Patient histories were obtained for all 48 women. Evaluable data typically included ethnicity, age at diagnosis, lymph node metastasis, tumor size, tumor grade and duration of disease free survival or date and cause of death. In approximately one-third of the tumors, estrogen and progesterone receptor status was also available. Nearly all of the women in the study population received one of several adjuvant therapies.

A prostate cancer study group was composed of 51 men diagnosed prior to 1996. Of the 51 men, 21 either died from or had recurrent prostate cancer. Typically, men were treated with prostatectomy and did not receive additional treatments unless or until there were signs of disease recurrence, such as rising PSA (prostate specific antigen). Patient histories included

ethnicity, age at diagnosis, Gleason score, lymph node and seminal vesicle metastasis, duration of disease-free survival, and date and cause of death.

Histological Review Tumor tissues were derived from excisional biopsy obtained at diagnosis, partial or full mastectomy or prostatectomy. Both paraffin-embedded and frozen tumor tissue sections were stained with hematoxylin and eosin and were examined microscopically to determine the fraction of normal and tumor cells within each tissue section. Paraffin blocks and frozen tissue sections containing the highest proportion of tumor cells were used for the study.

DNA Isolation DNA was purified from either paraffin-embedded or frozen archival tissue. DNA was extracted from twelve, serial 25 μm -thick sections of paraffin-embedded tissue using the Qiap Tissue Kit (Qiagen, Valencia CA) with the following modifications to the manufacture's protocol. Tissue sections were deparaffinized in octane and washed in ethanol as described previously (Fordyce, Heaphy and Griffith, in press). Frozen tissues were cut into small pieces using a sterile scalpel. DNA was extracted from frozen tissue using the Qiagen DNAeasy Kit following the manufacture's protocol. Placenta and HeLa DNA controls, with terminal restriction fragments (TRF) lengths of 10.1 and 5.4 KB, were purified as described (22).

Quantification of DNA Tumor DNAs were quantitated with the fluorescent dye, PicoGreen (Molecular Probes, Eugene, OR) following the manufacturer's protocol.

Slot Blots Slot blots were prepared as described (Fordyce, et al, in press). Briefly, DNA was denatured, neutralized, loaded and fixed to Tropilon-PlusTM membranes (Applied Biosystems, Foster City, CA). A telomere specific oligonucleotide end-labeled with fluorescein, (5'TTAGGG3')₄-FAM, was purchased from IDT (Coralville, IA). Following hybridization, the blots were washed to remove non-hybridizing oligonucleotides. Telomere-specific

oligonucleotides were detected by an alkaline phosphatase-conjugated anti-fluorescein antibody that produces light when a substrate, CDP-Star, is incubated with the blot (Applied Biosystems, Foster City, CA). Blots were exposed to Hyperfilm (Amersham Pharmacia Biotech, Buckinghamshire, UK) and digitized. The intensity of the telomere hybridization signal was determined from the digitized images with Nucleotech Gel Expert Software 4.0 (Nucleotech, San Mateo, CA). Telomere DNA content was expressed as a percentage of the average chemiluminescent signal of three replicate tumor DNAs, analyzed in duplicate or triplicate, compared to the value of the placental standard at the same genomic DNA concentration. (In 15 of the 51 prostate tumors, telomere DNA content was measured using an earlier version of this assay (22)).

Statistical Analysis Bias in the data analyses was minimized by stratifying tumors according to the median telomere DNA content of each study group. Telomere DNA content equal to or greater than the median was considered "High" and less than the median was considered "Low". Patients were identified retrospectively using their date of surgical procedure as the start date of the study and were followed for 84 months or until death. Except for survival analysis, which was performed with the Kaplan-Meier test, all statistical tests were two-sided Wilcoxon Rank Sums tests for which the α level was set at 0.05. Jmp In software 3.0 (SAS Institute) was used for all statistical analysis.

RESULTS

Telomere DNA Content and Breast Cancer: DNA was purified and telomere DNA content was analyzed by slot-blot in a total of 48 breast tumors, comprising two overlapping breast study groups. The first group was composed of paraffin-embedded tumor specimens from 28 women. Thirteen of these women developed recurrent breast cancer (including 12 who died from breast cancer) within 84 months of surgery. The remaining 15 women were disease-free for at least 84 months. These tumors were selected so as to have a mixture of positive and negative prognostic markers. For example, tumors were typically estrogen and progesterone receptor - positive, but also large with nodal involvement (Table 1). Telomere DNA content was not associated with ethnicity, age at diagnosis, tumor size, tumor grade, nodal involvement or estrogen- or progesterone-receptor status (data not shown). However, as shown in Figure 1a, reduced telomere DNA content was associated with patients who developed recurrent breast cancer within 84 months of surgery ($p < 0.01$).

Moreover, when tumors were stratified by median telomere DNA content, Kaplan-Meier analysis demonstrated that telomere DNA content was associated with clinical outcome (Fig. 1b, $p = 0.01$). The relative risk of breast cancer recurrence was nine times greater in women whose tumors had telomere DNA content less than the median.

To confirm and extend the observed relationship between telomere DNA content and clinical outcome, an additional 20 randomly selected patients were added to the initial study group. Seven of these 20 women developed recurrent breast cancer (including six who died of breast cancer) within 84 months of surgery. The characteristics of the 48 tumor specimens in the expanded study group are shown in Table 1. Consistent with our initial observation, telomere DNA content also predicted clinical outcome in the expanded group of patients (Fig. 2, $p = 0.03$).

Telomere DNA Content and Prostate Cancer: Using a carefully matched, limited prostate cancer study group (analogous to the initial breast cancer study group) we previously demonstrated that reduced telomere DNA content was also associated with disease recurrence and death (26). This result, in combination with investigations of breast cancer described above, implies that telomere DNA content has prognostic significance in cancers with both a variety of markers and different tissues of origin. To evaluate this possibility, telomere DNA content was analyzed in paraffin-embedded prostate tumors from 51 randomly selected men. Twenty-one of these men developed recurrent prostate cancer (including 13 who died from prostate cancer) within 84 months of surgery. The remaining 30 men remained disease-free for at least 84 months. The characteristics of the prostate study group are summarized in Table 2. Similarly, there was no association between telomere DNA content and ethnicity, age at diagnosis, Gleason sum score or lymph node or seminal vesicle status (data not shown). However, as shown in Figure 3a, reduced telomere DNA content was again associated with patients who either died from, or developed recurrent cancer within 84 months of surgery ($p=0.01$). Moreover, when tumors were stratified by median telomere DNA content, Kaplan-Meier analysis demonstrated yet again, that telomere DNA content was associated with clinical outcome (Fig. 3b, $p=0.04$).

DISCUSSION

Currently available prognostic markers often fail to accurately identify patients with the potential for lethal, metastatic tumors. Accordingly, cancer patients often receive empiric, aggressive therapies that, in fact, may not be necessary. Thus, there is a pressing need to identify more informative prognostic markers. To that end, we have evaluated the hypothesis that tumors with the shortest telomeres have the most aggressive phenotypes, which is suggested by our previous studies (13,25-28). This hypothesis is based on the fact that critically shortened telomeres are associated with genomic instability (13,14,27), and the assumption that genotypic instability results in phenotypic variability.

Although telomere loss has been associated with disease progression in a number of cancers, there have been few investigations of telomeres and clinical outcome(29-32). In 1998, Bechter and coworkers demonstrated that reduced telomeres were associated with decreased survival in patients with B cell chronic lymphocytic leukemia (33). Similarly, we showed that telomere loss was associated with reduced survival and increased disease recurrence in a preliminary investigation of prostate cancer (26). While these investigations are provocative, they either lacked sufficient sample size or a direct association with patient outcome.

The current investigation was designed to explore the hypothesized relationship between telomere DNA content and clinical outcome in breast and prostate cancer, diseases in which it is often difficult to predict disease recurrence. Here we show, in two independent studies, that telomere DNA content is associated with clinical outcome. Our investigation of telomere DNA content in breast cancer included two overlapping study groups. The initial group was carefully selected to contain women whose tumor markers made it difficult to differentiate between patients with aggressive, lethal tumors and those with less aggressive disease, i.e. the women

with the most problematic prognoses. In this group, telomere DNA content predicted death from breast cancer or disease recurrence ($p=0.01$). To ensure that this result was not an artifact of the study population, the analysis was repeated on an overlapping, less homogeneous group. This group, which was nearly double the size of the initial population, was formed by the addition of randomly selected patients. In the expanded study group, telomere DNA content also predicted death from breast cancer or disease recurrence ($p=0.03$).

In a second, independent study we examined the relationship between telomere DNA content and outcome in prostate cancer. This study was undertaken in part to confirm and extend our previously reported findings that reduced TC was associated with death and disease recurrence in a limited prostate study group (26). In contrast to the initial prostate study, no selection criteria were applied to the patients. Once again, reduced telomere DNA content predicted death from prostate cancer or disease recurrence ($p=0.04$).

Telomere DNA content was not associated with patients' ethnicity, age at diagnosis, tumor size or nodal involvement in either breast or prostate cancer, nor with estrogen- nor progesterone-receptor status in breast cancer, nor Gleason sum score nor seminal vesicle status in prostate cancer. Thus, telomere DNA content is independent of these existing, prognostic tumor markers. Collectively, these data provide strong support for the hypothesis that telomere DNA content is an informative, independent and novel prognostic marker for breast and prostate cancer.

Several characteristics of the telomere DNA content assay make it well-suited for clinical use: it requires very small quantities of DNA that can be isolated from fresh, frozen or paraffin-embedded tissue; the results are not affected by DNA fragmentation, and the data-analysis is straight forward. Importantly, while breast and prostate tumors are typically heterogeneous,

telomere DNA content was independent of the fraction of normal cells within the tumor. For instance patient 6382 had a good outcome and high telomere DNA content, although the tumor contained 10% normal cells. The tumor from patient 640 also contained 10% normal cells however; this patient had a poor outcome and low telomere DNA content. Since our analyses were based on the median telomere DNA content, additional studies will be necessary to establish the telomere DNA contents that predict favorable and poor outcomes. Finally, prospective investigations are necessary to confirm the prognostic import of telomere DNA content in these and, potentially, other cancers

Table 1: Summary of Breast Study Group

Characteristic	N	Ethnicity ¹			Age @ DX		Lymph Nodes ⁴		Estrogen Receptor ⁴		Progesterone Receptor ⁴		Tumor Size ⁵ (cm)		Tumor Grade ⁶		
		A	H	O	M ²	R ³	Pos	Neg	Pos	Neg	Pos	Neg	<2	>2	1	2	3
Initial Breast Study	28	15	10	1	48	33-75	24	2	10	6	12	5	2	16	5	9	7
Extended Breast Study	48	24	21	1	48	33-89	35	11	21	11	20	12	6	32	8	13	18

Characteristics of the breast study group are shown. 1). Patients' ethnicities were self-reported and classified as Anglo (A), Hispanic (H), or Other (O). 2). Median age. 3). Range of age of diagnoses. 4). Tumors' lymph node, estrogen-receptor and progesterone-receptor statuses. 5). Tumors were divided into two groups based on their size in largest dimension. 6). Tumors' histopathological grade.

Table 2: Summary of Prostate Study Group

Characteristic	N	Ethnicity ¹			Age @ DX		Lymph Nodes ⁴		Seminal Vesicles ⁴		Gleason Sum Score	
		A	H	O	M ²	R ³	Pos	Neg	Pos	Neg	M ⁵	R ⁶
Prostate Study Group	51	28	12	2	67	53-76	6	39	28	8	7	2-9

Characteristics of the prostate study group are shown. 1). Patients' ethnicities were self-reported and classified as Anglo (A), Hispanic (H), or Other (O). 2). Median age. 3). Range of age of diagnoses. 4). Tumors' lymph node, seminal vesicle status. 5). Median Gleason sum score 6). Range Gleason sum score.

REFERENCES

- (1) Bostwick DG, Foster CS. Predictive factors in prostate cancer: current concepts from the 1999 College of American Pathologists Conference on Solid Tumor Prognostic Factors and the 1999 World Health Organization Second International Consultation on Prostate Cancer. *Semin Urol Oncol* 1999;17:222-72.
- (2) Feneley MR, Partin AW. Indicators of pathologic stage of prostate cancer and their use in clinical practice. *Urol Clin North Am* 2001;28:443-58.
- (3) Goldhirsch A, Glick JH, Gelber RD, Senn HJ. Meeting highlights: International Consensus Panel on the Treatment of Primary Breast Cancer. *J Natl Cancer Inst* 1998;90:1601-8.
- (4) Hamdy FC. Prognostic and predictive factors in prostate cancer. *Cancer Treat Rev* 2001;27:143-51.
- (5) McGuire WL. Breast cancer prognostic factors: evaluation guidelines. *J Natl Cancer Inst* 1991;83:154-5.
- (6) Polychemotherapy for early breast cancer: an overview of the randomised trials. Early Breast Cancer Trialists' Collaborative Group. *Lancet* 1998;352:930-42.
- (7) Eifel P, Axelson JA, Costa J, Crowley J, Curran WJ, Jr., Deshler A, et al. National Institutes of Health Consensus Development Conference Statement: adjuvant therapy for breast cancer, November 1-3, 2000. *J Natl Cancer Inst* 2001;93:979-89.
- (8) Feneley MR, Partin AW. Diagnosis of localized prostate cancer: 10 years of progress. *Curr Opin Urol* 2000;10:319-27.
- (9) Glick JH, Gelber RD, Goldhirsch A, Senn HJ. Meeting highlights: adjuvant therapy for primary breast cancer. *J Natl Cancer Inst* 1992;84:1479-85.
- (10) van 't Veer LJ, Dai H, van de Vijver MJ, He YD, Hart AA, Mao M, et al. Gene expression profiling predicts clinical outcome of breast cancer. *Nature* 2002;415:530-6.
- (11) Shipp MA, Ross KN, Tamayo P, Weng AP, Kutok JL, Aguiar RC, et al. Diffuse large B-cell lymphoma outcome prediction by gene-expression profiling and supervised machine learning. *Nat Med* 2002;8:68-74.
- (12) McEachern MJ, Krauskopf A, Blackburn EH. Telomeres and their control. *Annu Rev Genet* 2000;34:331-58.
- (13) Counter CM, Avilion AA, LeFeuvre CE, Stewart NG, Greider CW, Harley CB, et al. Telomere shortening associated with chromosome instability is arrested in immortal cells which express telomerase activity. *EMBO Journal* 1992;11:1921-9.
- (14) Hiyama K, Ishioka S, Shirotani Y, Inai K, Hiyama E, Murakami I, et al. Alterations in telomeric repeat length in lung cancer are associated with loss of heterozygosity in p53 and Rb. *Oncogene* 1995;10:937-44.
- (15) Takauchi K, Tashiro S, Ohtaki M, Kamada N. Telomere reduction of specific chromosome translocation in acute myelocytic leukemia. *Japanese Journal of Cancer Research* 1994;85:127-30.
- (16) Romanov SR, Kozakiewicz BK, Holst CR, Stampfer MR, Haupt LM, Tlsty TD. Normal human mammary epithelial cells spontaneously escape senescence and acquire genomic changes. *Nature* 2001;409:633-7.
- (17) de Lange T, Shiue L, Myers RM, Cox DR, Naylor SL, Killery AM, et al. Structure and variability of human chromosome ends. *Mol Cell Biol* 1990;10:518-27.
- (18) Saltman D, Morgan R, Cleary ML, de Lange T. Telomeric structure in cells with chromosome end associations. *Chromosoma* 1993;102:121-8.

- (19) Hande MP, Samper E, Lansdorp P, Blasco MA. Telomere length dynamics and chromosomal instability in cells derived from telomerase null mice. *J Cell Biol* 1999;144:589-601.
- (20) Artandi SE, DePinho RA. Mice without telomerase: what can they teach us about human cancer? *Nat Med* 2000;6:852-5.
- (21) Chang S, Khoo C, DePinho RA. Modeling chromosomal instability and epithelial carcinogenesis in the telomerase-deficient mouse. *Semin Cancer Biol* 2001;11:227-39.
- (22) Bryant JE, Hutchings KG, Moyzis RK, Griffith JK. Measurement of telomeric DNA content in human tissues. *Biotechniques* 1997;23:476-8.
- (23) Rha SY, Park KH, Kim TS, Yoo NC, Yang WI, Roh JK, et al. Changes of telomerase and telomere lengths in paired normal and cancer tissues of breast. *International Journal of Oncology* 1999;15:839-45.
- (24) Allsopp RC, Harley CB. Evidence for a critical telomere length in senescent human fibroblasts. *Experimental Cell Research* 1995;219:130-6.
- (25) Griffith JK, Bryant JE, Fordyce CA, Gilliland FD, Joste NE, Moyzis RK. Reduced telomere DNA content is correlated with genomic instability and metastasis in invasive human breast carcinoma. *Breast Cancer Research & Treatment* 1999;54:59-64.
- (26) Donaldson L, Fordyce C, Gilliland F, Smith A, Feddersen R, Joste N, et al. Association between outcome and telomere DNA content in prostate cancer. *Journal of Urology* 1999;162:1788-92.
- (27) Gisselsson D, Jonson T, Petersen A, Strombeck B, Dal Cin P, Hoglund M, et al. Telomere dysfunction triggers extensive DNA fragmentation and evolution of complex chromosome abnormalities in human malignant tumors. *Proc Natl Acad Sci U S A* 2001;98:12683-8.
- (28) Artandi SE, Chang S, Lee SL, Alson S, Gottlieb GJ, Chin L, et al. Telomere dysfunction promotes non-reciprocal translocations and epithelial cancers in mice. *Nature* 2000;406:641-5.
- (29) Boultonwood J, Peniket A, Watkins F, Shepherd P, McGale P, Richards S, et al. Telomere length shortening in chronic myelogenous leukemia is associated with reduced time to accelerated phase. *Blood* 2000;96:358-61.
- (30) Brummendorf TH, Holyoake TL, Rufer N, Barnett MJ, Schulzer M, Eaves CJ, et al. Prognostic implications of differences in telomere length between normal and malignant cells from patients with chronic myeloid leukemia measured by flow cytometry. *Blood* 2000;95:1883-90.
- (31) Brummendorf TH, Rufer N, Holyoake TL, Maciejewski J, Barnett MJ, Eaves CJ, et al. Telomere length dynamics in normal individuals and in patients with hematopoietic stem cell-associated disorders. *Ann N Y Acad Sci* 2001;938:293-303; discussion -4.
- (32) Isokawa O, Suda T, Aoyagi Y, Kawai H, Yokota T, Takahashi T, et al. Reduction of telomeric repeats as a possible predictor for development of hepatocellular carcinoma: convenient evaluation by slot-blot analysis. *Hepatology* 1999;30:408-12.
- (33) Bechter OE, Eisterer W, Pall G, Hilbe W, Kuhr T, Thaler J. Telomere length and telomerase activity predict survival in patients with B cell chronic lymphocytic leukemia. *Cancer Research* 1998;58:4918-22.

FIGURE LEGENDS

Figure 1: Telomere DNA Content in the Initial Breast Cancer Study

A. Breast tumors were divided into two groups, recurrent and disease-free, based on patient outcome 84 months after surgery. P value (<0.01) was calculated by Wilcoxon-Rank Sums analysis. Box plots show patients outcome on the X-axis and TC, as a fraction of the placental control, on the y-axis.

B. Breast tumors were divided into groups, high and low, based on median Telomere DNA Contents (TC). TC greater than or equal to the median is defined as High TC and TC less than the median is defined as Low TC. P value (0.01) was calculated by Kaplan-Meier analysis. Plots show months of disease-free survival up to 84 months on the X-axis and surviving fraction on the y-axis.

Figure 2: Telomere DNA Content in the Extended Breast Cancer Study

The 48 human breast tumors were divided into two groups and analyzed as described in Figure 1 ($p = 0.03$).

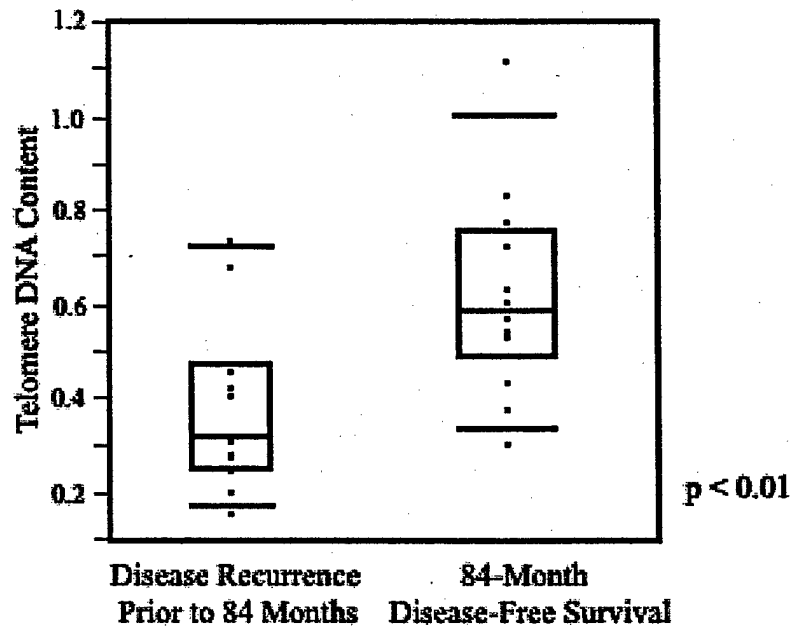
Figure 3: Telomere DNA Content in the Prostate Cancer Study

A. Prostate tumors were divided into two groups, recurrent and disease-free, as described in Figure 1 ($p = 0.01$).

B. Prostate tumors were divided into two groups and analyzed as described in Figure 1 ($p = 0.04$).

Figure 1: Telomere DNA Content in the Initial Breast Cancer Group

A.



B.

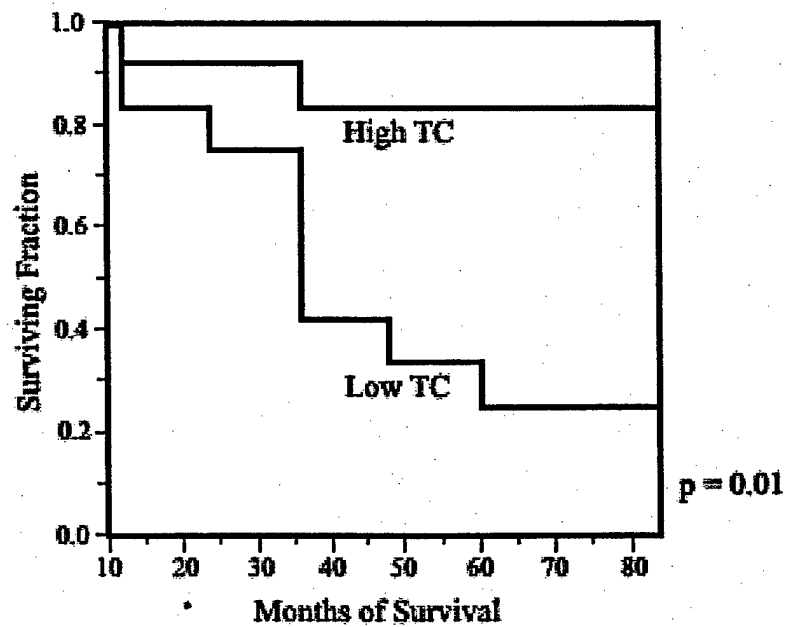


Figure 2: Telomere DNA Content in the Extended Breast Cancer Study Group

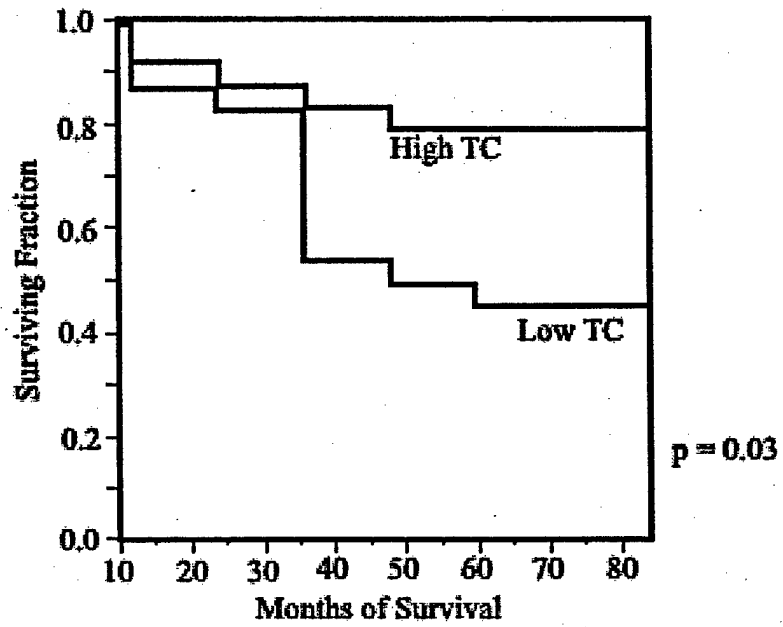


Figure 3: Telomere DNA Content in the Prostate Cancer Group

