

AD _____

Award Number: DAMD17-99-1-9197

TITLE: A New APC-like Gene Involved in Regulation of
 β -catenin/LEF Signaling

PRINCIPAL INVESTIGATOR: Christy R. Jarrett

CONTRACTING ORGANIZATION: Georgetown University Medical Center
Washington, DC 20057

REPORT DATE: July 2002

TYPE OF REPORT: Annual Summary

PREPARED FOR: U.S. Army Medical Research and Materiel Command
Fort Detrick, Maryland 21702-5012

DISTRIBUTION STATEMENT: Approved for Public Release;
Distribution Unlimited

The views, opinions and/or findings contained in this report are those of the author(s) and should not be construed as an official Department of the Army position, policy or decision unless so designated by other documentation.

REPORT DOCUMENTATION PAGE

Form Approved
OMB No. 074-0188

Public reporting burden for this collection of information is estimated to average 1 hour per response, including the time for reviewing instructions, searching existing data sources, gathering and maintaining the data needed, and completing and reviewing this collection of information. Send comments regarding this burden estimate or any other aspect of this collection of information, including suggestions for reducing this burden to Washington Headquarters Services, Directorate for Information Operations and Reports, 1215 Jefferson Davis Highway, Suite 1204, Arlington, VA 22202-4302, and to the Office of Management and Budget, Paperwork Reduction Project (0704-0188), Washington, DC 20503

1. AGENCY USE ONLY (Leave blank)	2. REPORT DATE July 2002	3. REPORT TYPE AND DATES COVERED Annual Summary (1 Jul 01 - 30 Jun 02)
----------------------------------	-----------------------------	---------------------------------------------------------------------------

4. TITLE AND SUBTITLE A New APC-like Gene Involved in Regulation of β -catenin/LEF Signaling	5. FUNDING NUMBERS DAMD17-99-1-9197
-------------------------------------------------------------------------------------------------------	----------------------------------------

6. AUTHOR(S) Christy R. Jarrett

7. PERFORMING ORGANIZATION NAME(S) AND ADDRESS(ES) Georgetown University Medical Center Washington, DC 20057 E-MAIL: byerss@georgetown.edu	8. PERFORMING ORGANIZATION REPORT NUMBER
------------------------------------------------------------------------------------------------------------------------------------------------------------	------------------------------------------

9. SPONSORING / MONITORING AGENCY NAME(S) AND ADDRESS(ES) U.S. Army Medical Research and Materiel Command Fort Detrick, Maryland 21702-5012	10. SPONSORING / MONITORING AGENCY REPORT NUMBER 20030122 082
---------------------------------------------------------------------------------------------------------------------------------------------------	-----------------------------------------------------------------------------

11. SUPPLEMENTARY NOTES report contains color

12a. DISTRIBUTION / AVAILABILITY STATEMENT Approved for Public Release; Distribution Unlimited	12b. DISTRIBUTION CODE
---------------------------------------------------------------------------------------------------	------------------------

13. ABSTRACT (*Maximum 200 Words*)
A second adenomatous polyposis coli (APC)-like gene, APC2/APCL was recently described and localized to chromosome 19. We have fine mapped APC2 to a small region of chromosome 19p13.3 containing markers D19S883 and WI-19632, a region commonly lost in a variety of cancers, particularly ovarian and breast cancer. Interphase FISH analysis revealed an APC2 allelic imbalance in 19 of 20 ovarian and 4/20 breast cancers screened and indicates that APC2 could be a potential tumor suppressor gene in breast and ovarian cancer. When over-expressed in cells that express low levels of APC2, exogenous APC2 localized to the Golgi apparatus, actin-containing structures, and occasionally to microtubules. Antibodies against the N-terminus of human APC2 show that endogenous APC2 is diffusely distributed in the cytoplasm and co-localizes with both the Golgi apparatus and actin filaments. APC2 remained associated with actin filaments following treatment with the actin-disrupting agent, cytochalasin D. These results suggest that APC2 is involved in actin associated events and could influence cell motility or adhesion through interaction with actin filaments as well as functioning independently or in cooperation with APC to down-regulate β -catenin signaling.

14. SUBJECT TERMS breast cancer, APC2, LEF signaling	15. NUMBER OF PAGES 17
	16. PRICE CODE

17. SECURITY CLASSIFICATION OF REPORT Unclassified	18. SECURITY CLASSIFICATION OF THIS PAGE Unclassified	19. SECURITY CLASSIFICATION OF ABSTRACT Unclassified	20. LIMITATION OF ABSTRACT Unlimited
-------------------------------------------------------	----------------------------------------------------------	---------------------------------------------------------	-----------------------------------------

FOREWORD

Opinions, interpretations, conclusions and recommendations are those of the author and are not necessarily endorsed by the U.S. Army.

___ Where copyrighted material is quoted, permission has been obtained to use such material.

___ Where material from documents designated for limited distribution is quoted, permission has been obtained to use the material.

___ Citations of commercial organizations and trade names in this report do not constitute an official Department of Army endorsement or approval of the products or services of these organizations.

N/A In conducting research using animals, the investigator(s) adhered to the "Guide for the Care and Use of Laboratory Animals," prepared by the Committee on Care and use of Laboratory Animals of the Institute of Laboratory Resources, national Research Council (NIH Publication No. 86-23, Revised 1985).

For the protection of human subjects, the investigator(s) adhered to policies of applicable Federal Law 45 CFR 46.

N/A In conducting research utilizing recombinant DNA technology, the investigator(s) adhered to current guidelines promulgated by the National Institutes of Health.

N/A In the conduct of research utilizing recombinant DNA, the investigator(s) adhered to the NIH Guidelines for Research Involving Recombinant DNA Molecules.

N/A In the conduct of research involving hazardous organisms, the investigator(s) adhered to the CDC-NIH Guide for Biosafety in Microbiological and Biomedical Laboratories.

Christy R. Jarrett
PI - Signature _____ Date

Table of Contents

Cover.....	1
SF 298.....	2
Foreword.....	3
Table of Contents.....	4
Introduction.....	5
Body.....	5
Key Research Accomplishments.....	9
Reportable Outcomes.....	10
Addition to Statement of Work	
Conclusions.....	10
References.....	
Appendices.....	11

INTRODUCTION (refer to references and figures in appendix)

The APC tumor suppressor gene, located on chromosome 5q21, is associated with colon cancer. Possible functions include the regulation of β -catenin protein degradation and signaling and microtubule mediated cell migration (1-3). β -catenin binds to the Tcf/LEF transcription factor complex and regulates the transcription of c-myc and cyclin D1, thus indicating that this pathway may be involved in cell cycle regulation (4-8). Truncating mutations in APC or mutations in certain N-terminal serine residues of β -catenin, result in increased β -catenin levels and increased transcriptional activation (2,3,9,10).

APCL/APC2, an APC homologue, located on chromosome 19p13.3 has also been shown to interact with β -catenin and can decrease β -catenin levels and signaling activity in SW480 colon cancer cells (11,12). hAPC2 is expressed in many different tissues and cell lines including brain, breast, colon, and ovary. APC family members have similar N-terminal dimerization domains, armadillo repeats, and β -catenin binding and regulatory domains but are less conserved at the C-terminus, which contains the basic domain, microtubule binding domain, and disc large binding site in hAPC. In addition, hAPC2 lacks the three 15 amino acid β -catenin binding sites. A phylogenetic tree of the highly conserved armadillo repeat domain suggests independent drosophila and vertebrate APC gene duplications (13). Drosophila APC (dAPC) is known to regulate wingless signaling in the eye but has not been associated with other tissues (14). Drosophila APC2 (dAPC2)/E-APC negatively regulates wingless signaling in the epidermis (13,15). These results suggest that APC and APC2 could be tissue specific and/or have different roles in β -catenin regulation.

Endogenous APC localizes near the ends of microtubules but does not associate with actin filaments or with microtubules in the cell body, however, when overexpressed, APC associates with microtubules throughout the cell (1,16,17). Over-expressed hAPC2 localizes to the perinuclear region and to some microtubules in the cell body but no studies have examined the distribution of endogenous hAPC2 (18).

dAPC2/E-APC co-localizes with actin caps during development and weak E-APC mutations in Drosophila females cause a loss of E-APC at the membrane of nurse-cells in the ovary, which corresponds to a loss of Armadillo/ β -catenin at the membrane (19,20). β -catenin localizes at the membrane to form adhesion junctions, which suggests that cell adhesion of these cells is compromised by the mutation in E-APC. In this study we show that endogenous hAPC2 co-localizes with the Golgi apparatus and actin filaments, particularly those filaments present at the leading edge of the cell and at cell-cell contact sites but was not associated with microtubules unless over-expressed. Significantly, SKOV3 ovarian cancer cells express considerably less APC2 than other cell lines. We have fine-mapped APC2 to a region of chromosome 19p13.3 containing markers D19S883 and WI-19632, a region commonly lost in a variety of cancers particularly breast and ovarian cancer (21-23). Using interphase fluorescence in situ hybridization (FISH), we show an allelic imbalance of APC2 in 19 of 20 sporadic ovarian tumors and 4/20 breast tumors indicating that APC2 could be a potential tumor suppressor gene.

RESULTS

Chromosomal Localization and Fine Mapping. Using a 1 kb sequence to the N-terminal region, four PAC clones (1K8, 17J21, 22K8, and 26K20) were isolated for APC2. FISH analysis using the four clones localized APC2 to chromosome 19p13.3, which confirms the previously published chromosomal assignment (Figure 1A (7,8)). 19p13.3 is ~20 mb in size. The genomic sequence of APC2 is ~40 kb and the coding sequence 7 kb. APC2 was then fine mapped by radiation hybrid mapping to the 800 kb region containing markers D19S883 and WI-19632 using primers designed to span the first exon/intron junction

(Figure 1B). This particular region of 19p13.3 exhibits significant loss of heterozygosity (LOH) in many different cancers and is near the Peutz-Jeghers syndrome (PJS) associated gene, LKB1/STK11. PJS is characterized by, intestinal hamartomas and increased risk of gastrointestinal, ovarian, pancreatic, and breast cancers (26). Even though there is significant LOH in this region, there are few mutations in the LKB1 gene in sporadic breast and colorectal cancers and adenoma malignum of PJS patients (21,22). In addition, although 50% of ovarian cancers contain an LOH on 19p13.3, LKB1 is not mutated indicating that another gene of significance in the development of cancer exists in this region (27). For example, marker D19S216, which is 9.5 cM distal to marker D19S883, but not LKB1 itself, exhibits 100% LOH in sporadic adenoma malignum of the uterine cervix (23). Therefore, APC2 could be a tumor suppressor gene affected by LOH of chromosome 19p13.3.

Using PAC clone 22K8, we performed FISH analysis on the SKOV3 ovarian cancer cell line, which had reduced levels of APC2 protein, and a variety of other cancer cell lines including those derived from breast and colon. These pilot studies showed that most had two or more copies on chromosome 19. However, although SKOV3 cells had on average 3 signals, none of them were on chromosome 19. To continue this study, we screened 20 sporadic breast and ovarian tumors by interphase FISH analysis. Remarkably, 19 of 20 specimens from ovarian cancer patients exhibited marked allelic imbalance (Table I). In contrast no significant allelic imbalance was observed in normal ovarian or breast tissue. The number of signals of the 19p telomeric marker was also significantly less than 2 in the ovarian cancer specimens. Even taking into account the bias toward slightly underestimating hybridization signals using interphase FISH, these data are consistent with published studies showing a marked loss of chromosome 19p tel in ovarian cancers and indicate an even more marked loss of APC2. Although the overall ratio of APC2/19p when averaged over 20 breast cancers was not markedly reduced (Table II), 4 of 20 breast cancer specimens did actually exhibit allelic imbalance at this locus.

Exogenous expression of APC2 in SKOV3 cells. In pilot studies we found that many cells expressed significant levels of APC2. However, the ovarian cancer cell line SKOV3 expressed low levels of APC2 as demonstrated by western blot and immunocytochemistry (Figure 2). We used SKOV3 cells to examine the distribution of exogenously expressed APC2. Upon APC2 transfection, the intensity of several bands was markedly increased as detected by western blot using a chicken antibody to APC2. Immunocytochemistry showed that APC2 transfected cells could easily be detected against the background of non-transfected cells. Exogenously expressed APC2 localized around the nucleus and co-localized with PKC μ , a kinase known to associate with the Golgi apparatus (28) (Figure 2 A1-3). Co-localization of APC2 and PKC μ was observed for much of the Golgi stack indicating that APC2 is associated with certain regions of the Golgi where it co-localizes with PKC μ even though the Golgi apparatus is somewhat disrupted in the transfected cells. APC2 co-localized with actin filaments at the cell membrane (Figure 2 B1-3). SKOV3 cells have very few actin filaments in the cytoplasm compared to the MDA-MB-157 cells shown in Figure 5. β -catenin co-localized with exogenous APC2 in the aggregates at the Golgi apparatus whereas in untransfected cells β -catenin is localized only at the membrane (Figure 2 C1-3). This could be indicative of a transport function for APC2 as suggested in recent studies (29-31). Exogenously expressed APC2 also appears to co-localize with some perinuclear microtubules (Figure 2 D1-3).

APC2 Expression. APC2 expression was determined by RT-PCR, Northern analysis and Western analysis of both cell lines and tissue. For RT-PCR 1 ug of total RNA from each cell line or tissue was used for amplification, for Northern analysis 10 ug of total RNA and for Western analysis 60 ug of protein from each cell line. We confirmed that APC2 is expressed in a variety of tissues, including breast, colon, brain, and ovary, at both the RNA and protein level (designated as (+)Table III; 12). In some cells APC2 levels were reduced but still detectable (+/-). APC2 expression, like APC, is greatest in the brain;

however, there are differing levels in different brain regions with very little expression in the cerebellum and cerebral cortex (results not shown). Lymphoid tissues and lymphoma cell lines had no detectable APC2 at the mRNA or protein level with the exception of K-562 leukemia cells, which express low levels of APC2 (Figure 3).

Both rabbit and chicken hAPC2 antibodies were affinity purified on an antigen coupled CNBr column. Western blot analysis determined that both antibodies were specific to hAPC2 with no cross-reactivity to APC (Figure 3A). This was confirmed using the SW480 colon cancer cell line that contains a C-terminally truncated form of APC. Neither rabbit nor chicken hAPC2 antibodies detect this truncated APC protein even though it contains the conserved N-terminus. The predicted molecular weight of full-length APC is ~310 K and that of APC2 is ~245 K. In addition, APC2 is present in T84 cells, which have a homozygous deletion of the APC gene. To further determine specificity, we blocked the antibody with recombinant antigen before Western blot analysis and found that all bands are specific to APC2 (results not shown). Similarly, when preimmune IgY was used to probe Western blots no staining was observed (not shown). Western blot analysis showed that APC2 is expressed in many cell lines including SKBR3, SW480, MDCK, MDA-MB-157 and 436 (Figure 3B). HL-60 lymphoma cells have no detectable APC2 protein, which correlates with the mRNA data. A characteristic pattern of immunoreactive species was observed. Three major bands larger than 200 kD and several smaller molecular weight species of ~121, 81, and 51 kD (not shown on this blot) were present consistently. Other cell lines, for example MDA-MB-157 and SKOV3, have significantly less of all bands. The presence of multiple bands by western blotting with N-terminal APC2 antibodies is similar to that observed for APC using N-terminal APC antibodies (32). In the case of APC the multiple banding pattern has been ascribed to a combination of multiple splice variants and to degradation products. Because several lower molecular weight species are present in cells that are transfected with full-length APC2 (Figure 2) it is likely that these bands represent degradation products. Some differences in the pattern of immunoreactive species were observed when endogenous APC2 was compared in different cell lines and when compared to exogenously expressed APC2. These variations are likely to represent variable degrees of proteolytic degradation in the different situations. However it is possible that like APC, APC2 may also have many splice variants.

The N-terminal region of APC2 contains the highly conserved dimerization domain. This region in APC has been shown to dimerize *in vitro* (33,34). To determine whether APC associates with APC2, APC2 was immunoprecipitated with the purified rabbit antibody and APC detected using APC Ab-1 in SW480 and HBL-100 cells (Figure 3C). Full-length APC was detected in HBL-100 cells and the 150 kD truncated form of APC was detected in SW480 cells. This result demonstrates that APC and APC2 can either dimerize or associate in a complex in a detergent soluble lysate.

Sub-cellular Localization of APC2. To investigate the localization of endogenous APC2 in the cell, we performed immunocytochemistry on several cell lines including SKBR3 breast cancer cells, MDCK normal canine kidney cells, SW480 colon cancer cells, and A549 lung carcinoma cells. Although both rabbit and chicken antibodies exhibited a similar staining pattern by immunocytochemistry, the chicken antibody was exceptional and was used for these studies. Preimmune chicken IgY and antigen blocked antibody, as well as IgY prior to antigen affinity purification, were completely negative (Figure 4 A and B). Specific APC2 staining was similar in all cell lines and was observed diffusely in the cytoplasm as well as being associated with tubular structures adjacent to the nucleus that resembled the Golgi apparatus (Figure 4). Staining was also concentrated along filamentous structures and in what appeared to be lamellipodial membranes.

APC2 Association with Actin Filaments. As was observed with exogenously expressed APC2 in SKOV3 cells, endogenous APC2 co-localized with PKC μ at the Golgi apparatus (Figure 5 A1-3). A relationship between APC2 and actin filaments was observed in cells stained with phalloidin (Figure 5

B1-3). However, not all actin filaments stained and APC2 appeared to be concentrated near actin-associated membrane ruffles and lamellipodia as well as cell-cell contact sites. Treatment with cytochalasin D, an actin-disrupting agent, causes actin filaments to collapse and coalesce mostly at the cell periphery but also throughout the cell. Following treatment with cytochalasin D, APC2 remained associated with the actin filaments in MDA-MB-157 cells (Figure 5 C1-3).

Endogenous APC is localized at the tips of microtubules in MDCK cells and is not associated with actin filaments (1). However, overexpression of APC results in the decoration of microtubules throughout the cell (16,35). Consistent with this, cytochalasin D treatment does not affect APC staining but disruption of microtubules with nocodazole does (1).

DISCUSSION

Subcellular localization of hAPC2

hAPC2 is diffusely distributed in the cytoplasm, is localized to the Golgi apparatus, and is associated with actin filaments. In some instances, such as lamellapodia or membrane ruffles, APC2 exhibits a punctate staining at the ends of actin filaments. Unlike APC, APC2 remains associated with the disrupted actin filaments following treatment with cytochalasin D. Recent studies show that E-APC/dAPC2 co-localizes with actin caps during *Drosophila* development and negatively regulates wingless signaling in the epidermis (20,38,39). These data suggest that even though sequence similarity is low, hAPC2 and dAPC2/E-APC may be functional homologues and that both may be involved in actin-associated events such as motility as well as in β -catenin signaling.

In contrast, endogenous APC localizes near the ends of microtubules in a punctate pattern but does not co-localize with actin (1); however, when over-expressed, APC associates with microtubules throughout the cell (16,35). Over-expressed APC2 forms aggregates at the Golgi apparatus and co-localizes with actin filaments as well as some microtubules. Similarly, Nakagawa *et al* (18) reported that over-expressed, epitope-tagged APCL/APC2 localizes in the perinuclear region and microtubule network. Our results indicate that as is the case with APC, APC2 localization with microtubules in the cell body may only occur when APC2 is present at very high levels. It has been suggested that APC might be involved in microtubule regulated membrane protrusion and cell migration as well as inhibition of β -catenin signaling (40). Like APC, APC2 also can inhibit β -catenin signaling (11,12). Although APC2 and APC do not co-localize at the membrane or cytoskeletal structures they are both present in the cytoplasm. Immunoprecipitation results show that they can exist in the same complex in this environment. Taken together these findings suggest an intriguing scenario in which cytoplasmic APC and APC2 regulate related microtubule and actin-based functions and β -catenin signaling either independently or in cooperation. APC and APC2 could cooperate in the cytoplasm or in association with microtubules and actin filaments respectively to control such processes as β -catenin signaling and cell motility as suggested by Barth *et al* (40). In addition interactions between microtubules and actin filaments occur during cell motility (41). The cellular location and many binding domains of APC2 suggest that it has multiple and perhaps dynamic functions. For example, recent studies located a nuclear export signal that allows APC, APC2, and E-APC to shuttle between the nucleus and the cytoplasm thus suggesting a transport mechanism (29-31).

Significance of the chromosomal location of APC2

The chromosomal localization of APC2 to chromosome 19p13.3 within 12 cM of the telomere is significant because this region is associated with Peutz-Jeghers Syndrome (PJS) and exhibits significant loss of heterozygosity (LOH) in several sporadic cancers. Patients with PJS are more susceptible to breast, testis, gastrointestinal, and ovarian cancers (26). Loss of 19p13.3 occurs in many sporadic cancers including those of the breast and is remarkably common in sporadic ovarian carcinomas (~50%) (27). Ovarian cancers are also characterized by a high rate (~16%) of stabilizing β -catenin mutations (42). However, mutations in the PJS gene, LKB1, are not present in most of these sporadic cancers suggesting the existence of other tumor suppressor loci in this region of chromosome 19 (21,27). Our fine-mapping analysis shows that APC2 is located in the region of markers D19S883 and WI-19632 between the LKB1 gene and the site of 100% LOH found in adenoma malignum of the uterine cervix (23). Importantly, we found significant allelic imbalance of APC2 in sporadic ovarian cancers. Therefore, like APC, APC2 could be a tumor suppressor gene important in several cancers particularly ovarian cancer.

A recent study by Townsley and Bienz (19) showed that the majority of offspring of homozygous *Drosophila* females carrying a weak E-APC/dAPC2 mutation die as embryos with defects similar to Wingless stimulation. Interestingly, E-APC was lost at the membrane of nurse-cells in the ovary. This loss coincided with a loss of Armadillo/ β -catenin at the membrane and suggests that cell adhesion might be affected by the weak mutation in E-APC. Our data indicates that if similar mutations occur in human APC2 they may be relevant in breast and ovarian cancer. At this time some single nucleotide polymorphisms (SNPs) have been discovered in several genes on chromosome 19p13.3 but none in the APC2 gene itself. Further studies searching for SNPs and a more formal LOH study will better determine whether APC2 is a tumor suppressor gene.

Key Research Accomplishments:

- Identification of a new APC-like gene, APC2 (~245 K), which is overall 35% identical to APC (~310K).
- APC2 is located on chromosome 19p13.3 in a region containing markers D19S883 and WI-19632, a region of LOH predisposing to several different cancers including breast and ovarian.
- APC2 is expressed in most cells and tissues, including breast, colon, and ovary with greatest expression in the brain, which is similar to APC.
- APC2 is localized diffusely in the cytoplasm, is localized to the golgi apparatus, and is associated with actin filaments.
- Upon retinoic acid (RA) treatment, APC2 co-localizes with β -catenin and actin filaments at the membrane in SKBR3 breast cancer cells.
- APC2 regulates β -catenin signaling activity similar to APC.
- APC2 and APC associate in a detergent soluble lysate.
- Upon overexpression, APC2 localizes at the Golgi apparatus, in aggregates containing β -catenin, and associates with both actin and microtubule filaments.
- There is a significant APC2 allelic imbalance in ovarian cancer.
- An APC2 allelic imbalance was found in 4 of 20 breast tumors, however these 4 were the most aggressive of the 20 specimens examined.

Reportable Outcomes:

Jarrett, C.R., Blancato, J., Cao, T., Young, P., King, C.R. and Byers, S. Human APC2 localization and allelic imbalance (2001) Cancer Res. 61:7978-7984

APC2 in breast cancer. NIH 5 R21-CA87749. NIH grant awarded to Stephen Byers. 04/01/01-03/31/03.
Total costs \$232,950

Addition to Statement of Work:

Christy Jarrett completed PhD Program and we were recently approved to transfer this award to another of our predoctoral trainees, Greg Nishanian. Mr. Nishanian is currently a third year student in the Tumor Biology Training Program, and is very excited to continue the interesting work on the regulation of β -catenin signaling. His proposed project is similar to that described in the original grant with the additional goal of investigating a new β -catenin-regulated gene (BMP4). Tasks 1-3 of the original proposal remain as written and we will add the following task.

Task 4. To investigate proteins that interact with the C-terminal of the BMP4 receptor. BMP4 was recently identified as a β -catenin target gene. To further study this important aspect of β -catenin regulation Mr. Nishanian proposes to identify proteins that interact with the C-terminal of the BMP-4 receptor. This information will give us more information regarding the mechanisms of β -catenin signaling that lead to tumor development.

Conclusions:

In year 3 of this pre-doctoral fellowship, the work on APC2 was largely completed. Much of this was published recently in Cancer Research (see appendix). As a direct result of DOD support of Ms (now Dr) Jarrett we were able to successfully compete for NIH funding (see reportable outcomes).

Appendix:

Jarrett, C.R., Blancato, J., Cao, T., Young, P., King, C.R. and Byers, S. Human APC2 localization and allelic imbalance (2001) Cancer Res. 61:7978-7984

Human APC2 Localization and Allelic Imbalance¹

Christy Rothwell Jarrett, Jan Blancato, Tin Cao, D. S. Bressette, M. Cepeda, Paul E. Young, C. Richter King, and Stephen W. Byers²

The Lombardi Cancer Research Center, Georgetown University School of Medicine, Washington, DC 20007 [C. R. J., J. B., T. C., S. W. B.]; Human Genome Sciences, Inc., Rockville, Maryland 20850 [D. S. B., M. C., P. E. Y.]; and GenVec, Rockville, Maryland 20852 [C. R. K.]

ABSTRACT

A second adenomatous polyposis coli (APC)-like gene, APC2/APCL, was recently described and localized to chromosome 19. We have fine mapped APC2 to a small region of chromosome 19p13.3 containing markers D19S883 and WI-19632, a region commonly lost in a variety of cancers, particularly ovarian cancer. Interphase fluorescence *in situ* hybridization analysis revealed an APC2 allelic imbalance in 19 of 20 ovarian cancers screened and indicates that APC2 could be a potential tumor suppressor gene in ovarian cancer. When overexpressed in SKOV3 ovarian cancer cells, which express low levels of APC2, exogenous APC2 localized to the Golgi apparatus, actin-containing structures, and occasionally to microtubules. Antibodies against the NH₂ terminus of human APC2 show that endogenous APC2 is diffusely distributed in the cytoplasm and colocalizes with both the Golgi apparatus and actin filaments. APC2 remained associated with actin filaments after treatment with the actin-disrupting agent, cytochalasin D. These results suggest that APC2 is involved in actin-associated events and could influence cell motility or adhesion through interaction with actin filaments, as well as functioning independently or in cooperation with APC to down-regulate β -catenin signaling.

INTRODUCTION

The APC³ tumor suppressor gene, located on chromosome 5q21, is associated with colon cancer. Possible functions include the regulation of β -catenin protein degradation and signaling and microtubule-mediated cell migration (1-3). β -catenin binds to the Tcf/LEF transcription factor complex and regulates the transcription of c-myc and cyclin D1, thus indicating that this pathway may be involved in cell cycle regulation (4-8). Truncating mutations in APC or mutations in certain NH₂-terminal serine residues of β -catenin result in increased β -catenin levels and increased transcriptional activation (2, 3, 9, 10).

APCL/APC2, an APC homologue located on chromosome 19p13.3, has also been shown to interact with β -catenin and can decrease β -catenin levels and signaling activity in SW480 colon cancer cells (11, 12). hAPC2 is expressed in many different tissues and cell lines, including brain, breast, colon, and ovary. APC family members have similar NH₂-terminal dimerization domains, armadillo repeats, and β -catenin binding and regulatory domains but are less conserved at the COOH terminus, which contains the basic domain, microtubule-binding domain, and disc large binding site in hAPC. In addition, hAPC2 lacks the three 15 amino acid β -catenin binding sites. A phylogenetic tree of the highly conserved armadillo repeat

domain suggests independent *Drosophila* and vertebrate APC gene duplications (13). dAPC is known to regulate wingless signaling in the eye but has not been associated with other tissues (14). dAPC2/E-APC negatively regulates wingless signaling in the epidermis (13, 15). These results suggest that APC and APC2 could be tissue specific and/or have different roles in β -catenin regulation.

Endogenous APC localizes near the ends of microtubules but does not associate with actin filaments or with microtubules in the cell body; however, when overexpressed, APC associates with microtubules throughout the cell (1, 16, 17). Overexpressed hAPC2 localizes to the perinuclear region and to some microtubules in the cell body, but no studies have examined the distribution of endogenous hAPC2 (18).

dAPC2/E-APC colocalizes with actin caps during development, and weak E-APC mutations in *Drosophila* females cause a loss of E-APC at the membrane of nurse cells in the ovary, which corresponds to a loss of armadillo/ β -catenin at the membrane (19, 20). β -catenin localizes at the membrane to form adhesion junctions, which suggests that cell adhesion of these cells is compromised by the mutation in E-APC. In this study, we show that endogenous hAPC2 colocalizes with the Golgi apparatus and actin filaments, particularly those filaments present at the leading edge of the cell and at cell-cell contact sites but was not associated with microtubules unless overexpressed. Significantly, SKOV3 ovarian cancer cells express considerably less APC2 than other cell lines. We have fine mapped APC2 to a region of chromosome 19p13.3 containing markers D19S883 and WI-19632, a region commonly lost in a variety of cancers, particularly ovarian cancer (21-23). Using interphase FISH, we show an allelic imbalance of APC2 in 19 of 20 sporadic ovarian tumors indicating that APC2 could be a potential tumor suppressor gene.

MATERIALS AND METHODS

FISH Analysis and Fine Mapping. A 1-kb cDNA fragment from the NH₂-terminal region of APC2 corresponding to the recombinant protein used to make antibodies was used to screen a PAC library (Human Genome FISH Mapping Resource Center at the Ontario Cancer Institute). Four genomic PAC clones were identified: 1K8, 17J21, 22K8, and 26K20. FISH to normal human lymphocyte chromosomes was used to map the genomic PAC clones to chromosome 19p13.3. Fine mapping was performed using radiation hybrid screening by PCR (Research Genetics, Inc.). Primer sequences (5'-GCTG-CAGGAGCTGAAGATG; 5'-GTGGCTGGAGTTGTCCTTA) were designed to yield a 120-bp product spanning the first exon/intron junction. Interphase FISH analysis was performed on paraffin sections of 20 sporadic ovarian and breast tumors, as well as 10 normal ovary and breast specimens.

Antibody Development. A recombinant glutathione S-transferase-fusion protein to the NH₂-terminal region of APC2 (amino acid 1-249) was produced in *Escherichia coli* using the pGEX-4T-2 vector, isolated, and released by protease cleavage (Pharmacia Biotech). This protein was used to inoculate both rabbit and chicken (Rockland, Inc., Gilbertsville, PA). Both the rabbit serum and IgY collected from the chicken eggs were affinity purified on an antigen-coupled CnBr column.⁴

Northern Analysis. Human multiple tissue and human cancer cell line-polyadenylated RNA blots were obtained from CLONTECH and processed

Received 12/11/00; accepted 8/27/01.

The costs of publication of this article were defrayed in part by the payment of page charges. This article must therefore be hereby marked *advertisement* in accordance with 18 U.S.C. Section 1734 solely to indicate this fact.

¹ Supported by grants from the Department of Defense (DAMD 17-98-8089) and NIH (R21 CA87749). C. R. J. was supported by a Department of Defense Predoctoral Fellowship Grant DAMD 17-99-1-9197.

² To whom requests for reprints should be addressed, at Georgetown University Medical Center, Research Building E415, 3970 Reservoir Road Northwest, Washington, DC 20007. Phone: (202) 687-1813; Fax: (202) 687-7505; E-mail: byerss@gunet.georgetown.edu.

³ The abbreviations used are: APC, adenomatous polyposis coli; APC2, APC-like gene; dAPC, *Drosophila* APC; dAPC2/E-APC, *Drosophila* APC2; FISH, fluorescence *in situ* hybridization; hAPC2, human APC2; PAC, P-1-derived artificial chromosome; PJS, Peutz-Jeghers syndrome; RT-PCR, reverse transcription-PCR; LOH, loss of heterozygosity.

⁴ Internet address: http://viz.e222.zo.utexas.edu/Marker_pages/methods_pages/affinity_col.html.

according to the supplied manufacturer's protocol using a probe to the NH₂-terminal region of APC2.

RT-PCR. RNA was isolated by the RNazol method (Tel-Test, Inc.). RT-PCR was performed using the Perkin-Elmer Gene Amp RNA PCR Core Kit. Primers to the NH₂-terminal region (5'-AGGAGCTAAGGGA-CAACTCCA; 5'-TCCAGCAGCTCCTTGTCAT) were designed to yield a 600-bp fragment. These primers were shown to be specific to APC2 by sequencing of the product, as well as using wild-type APC as a negative control.

Western Blot. Cells were grown to confluence in 150-mm dishes, washed twice with PBS, and lysed for 10 min on ice in 1% HEPES lysis buffer containing 1% Triton-X and protease inhibitors (1 mM sodium vanadate, 50 mM sodium fluoride, and Boehringer Mannheim complete mini EDTA-free protease inhibitor cocktail tablet). Lysates were centrifuged at 14,000 rpm at 4°C. Protein content was determined by the bicinchoninic acid protein assay (Pierce). Western blotting was performed as described previously using either rabbit or chicken APC2 antibody at 1 µg/ml, APC Ab-1 (Oncogene) at 1 µg/ml, or β-catenin (Transduction Laboratories) at 1:1000 (24). The blots were developed using chemiluminescent detection (Pierce). Specificity of the antibodies was determined by incubating recombinant APC2 antigen (10 µg/ml) with the antibody for 1 h at room temperature before incubating the blot.

Immunocytochemistry. SKBR3, A549, MDA-MB-157, SW480, and MDCK cells were plated on 18-mm coverslips in 12 well plates at ~50,000 cells/well. SKOV3 cells were transfected with 0.2 µg of APC2 using LipofectAMINE Plus (Life Technologies, Inc.). In some experiments, cells were treated with 2 µM cytochalasin D (Sigma Chemical Co.) in media for 2 h at 37°C. Antibody blocking with the immunogen was performed as described above. Both treated and untreated cells were fixed with 2% paraformaldehyde and permeabilized with 0.2% Triton. Purified chicken APC2 antibody was used at a concentration of 1 µg/ml, and secondary antibody conjugated with fluorescein (Pierce) was used at 1:100. Other primary antibodies and reagents were used at the following concentrations: normal IgY (Rockland, Inc.) at 1 µg/ml, monoclonal β-catenin antibody (Transduction Laboratories) at 1:100 overnight at 4°C, polyclonal anti-APC (kindly provided by P. Polakis; Ref. 3) at 1:100 overnight at 4°C, monoclonal antitubulin (Sigma Chemical Co.) at 1:2000, phalloidin (Molecular Probes, Inc.) at 1:200 for 15 min, and anti-PKCµ (Transduction Laboratories) at 1:200. All primary antibodies were incubated for 1 h, and all secondary antibodies were used at a 1:100 dilution for 1 h at room temperature unless otherwise noted above.

RESULTS

Chromosomal Localization and Fine Mapping. Using a 1-kb sequence to the NH₂-terminal region, four PAC clones (1K8, 17J21, 22K8, and 26K20) were isolated for APC2. FISH analysis using the four clones localized APC2 to chromosome 19p13.3, which confirms the previously published chromosomal assignment (Fig. 1A; Refs. 7 and 8). 19p13.3 is ~20 Mb in size. The genomic sequence of APC2 is ~40 kb, and the coding sequence is 7 kb. APC2 was then fine mapped by radiation hybrid mapping to the 800-kb region containing markers D19S883 and WI-19632 using primers designed to span the first exon/intron junction (Fig. 1B). This particular region of 19p13.3 exhibits significant LOH in many different cancers and is near the PJS-associated gene, *LKB1/STK11*. PJS is characterized by intestinal hamartomas and increased risk of gastrointestinal, ovarian, pancreatic, and breast cancers (25). Although there is significant LOH in this region, there is a low frequency of mutations in the *LKB1* gene in sporadic breast and colorectal cancers and adenoma malignum of PJS patients (21, 22). In addition, although 50% of ovarian cancers contain an LOH on 19p13.3, *LKB1* is not mutated, indicating that another gene of significance in the development of cancer exists in this region (26), e.g., marker D19S216, which is 9.5 fM distal to marker D19S883, but not *LKB1* itself, exhibits 100% LOH in sporadic adenoma malignum of the uterine cervix (23). Therefore, APC2 could be a tumor suppressor gene affected by LOH of chromosome 19p13.3.

Using PAC clone 22K8, we performed FISH analysis on the

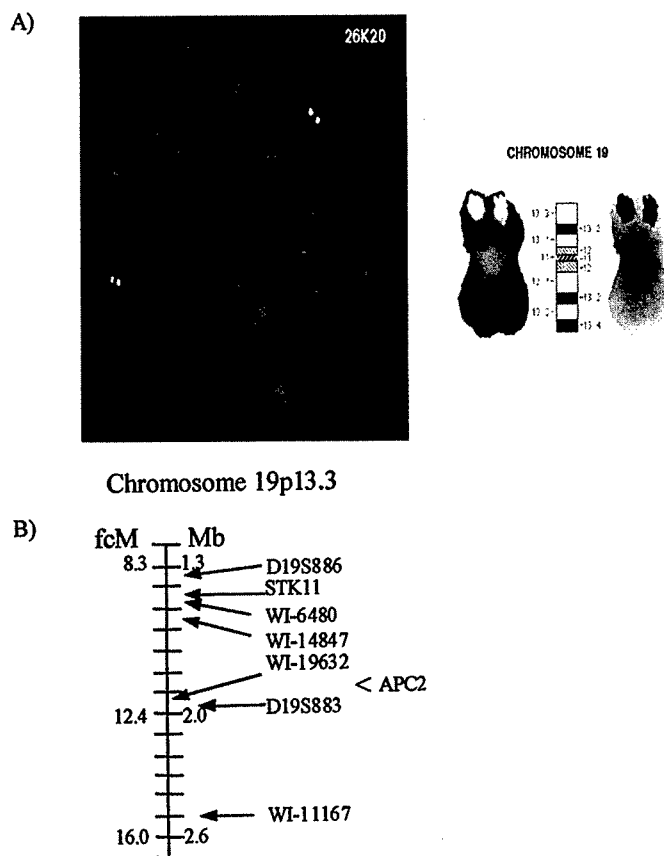


Fig. 1. APC2 chromosomal localization and fine mapping. In A, APC2 was mapped to chromosome 19p13.3 by FISH analysis using PAC clones identified through screening with a 1-kb cDNA fragment from the NH₂-terminal region of APC2. In B, fine mapping using radiation hybrid screening by PCR located APC2 to the region on chromosome 19p13.3 containing markers WI-19632 and D19S883.

SKOV3 ovarian cancer cell line, which had reduced levels of APC2 protein, and a variety of other cancer cell lines, including those derived from breast and colon. These pilot studies showed that most had two or more copies on chromosome 19. However, although SKOV3 cells had on average three signals, none of them were on chromosome 19. To continue this study, we screened 20 sporadic breast and ovarian tumors by interphase FISH analysis. Remarkably, 19 of 20 specimens from ovarian cancer patients exhibited marked allelic imbalance (Table 1). In contrast, no significant allelic imbalance was observed in normal ovarian or breast tissue. The number of signals of the 19p telomeric marker was also significantly less than two in the ovarian cancer specimens. Even taking into account the bias toward slightly underestimating hybridization signals using interphase FISH, these data are consistent with published studies showing a marked loss of chromosome 19ptel in ovarian cancers and indicate an even more marked loss of APC2. Although the overall ratio of APC2:19p when averaged over 20 breast cancers was not markedly reduced (Table 2), 4 of 20 breast cancer specimens did actually exhibit allelic imbalance at this locus.

Exogenous Expression of APC2 in SKOV3 Cells. In pilot studies, we found that many cells expressed significant levels of APC2. However, the ovarian cancer cell line SKOV3 expressed low levels of APC2 as demonstrated by Western blot and immunocytochemistry (Fig. 2). We used SKOV3 cells to examine the distribution of exogenously expressed APC2. On APC2 transfection, the intensity of three bands was markedly increased as detected by Western blot using a chicken antibody to APC2. Immunocytochemistry showed that APC2-transfected cells could easily be detected against the back-

Table 1 Allelic imbalance of chromosome 19p and APC2 in ovarian tumors^a

Specimen	Chromosome 19p telomere	APC2
1	2.05	0.95
2	1.6	0.55
3	1.45	0.7
4	1.0	0.7
5	1.3	0.7
6	1.65	0.45
7	1.2	0.4
8	1.0	0.1
9	0.8	0.15
10	0.15	1.75
11	0.4	0.25
12	0.85	0.2
13	1.2	0.55
14	0.9	0.05
15	0.85	0.2
16	1.5	0.4
17	1.45	0.3
18	1.25	0.4
19	1.0	0.2
20	0.75	0.25
Mean	1.12	0.46

^aT value 4.9056; P 9.8187e-5.

ground of nontransfected cells. Exogenously expressed APC2 localized around the nucleus and colocalized with PKC μ , a kinase known to associate with the Golgi apparatus (Ref. 27; Fig. 2A1-3). Colocalization of APC2 and PKC μ was observed for much of the Golgi stack, indicating that APC2 is associated with certain regions of the Golgi where it colocalizes with PKC μ , although the Golgi apparatus is

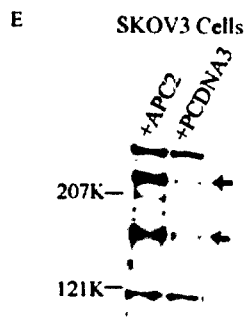
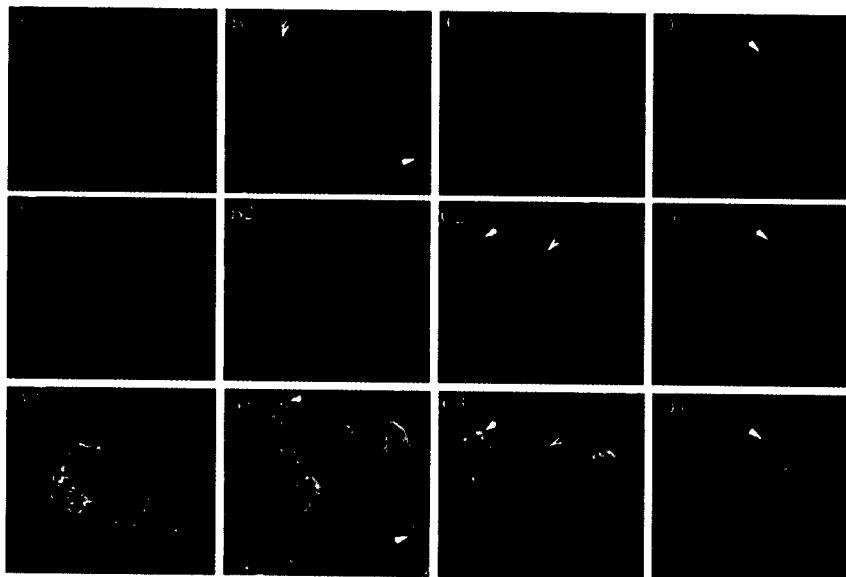
somewhat disrupted in the transfected cells. APC2 colocalized with actin filaments at the cell membrane (Fig. 2B1-3). SKOV3 cells have less prominent actin filaments in the cytoplasm compared with the MDA-MB-157 cells shown in Fig. 5. β -catenin colocalized with exogenous APC2 in the aggregates at the Golgi apparatus, whereas in untransfected cells, β -catenin is localized only at the membrane (Fig. 2C1-3). This could be indicative of a transport function for APC2 as suggested in recent studies (28-30). Exogenously expressed APC2 also appears to colocalize with some perinuclear microtubules (Fig. 2D1-3).

APC2 Expression. APC2 expression was determined by RT-PCR, Northern analysis, and Western analysis of both cell lines and tissue. For RT-PCR, 1 μ g of total RNA from each cell line or tissue was used for amplification; for Northern analysis, 10 μ g of total RNA was used; and for Western analysis, 60 μ g of protein from each cell line was used. We confirmed that APC2 is expressed in a variety of tissues, including breast, colon, brain, and ovary, at both the RNA and protein

Table 2 Mean number of chromosome 19p telomere and APC2 signals in normal and tumor ovarian and breast tissues

Tissue	Chromosome 19ptel	APC2	Ratio APC2:19p
Normal ovary	1.42	1.25	0.88
Ovarian cancer	1.12	0.46	0.41
Normal breast	1.43	1.34	0.94
Breast cancer	1.70	1.49	0.88

Fig. 2. Localization of exogenously expressed APC2. Immunocytochemical staining of SKOV3 cells transfected with APC2 shows perinuclear staining (A1) using the APC2 IgY antibody. Cells were stained for the Golgi apparatus marker PKC μ (A2). APC2 colocalizes with PKC μ at the Golgi apparatus (A3). Also note that the Golgi apparatus looks somewhat distorted in the transfected cells compared with the nontransfected cells. Double staining of APC2 (B1) and actin (B2) found APC2 localized with actin filaments in regions close to the membrane (B3, arrows). Cells were stained for APC2 (C1) and β -catenin (C2). β -catenin colocalizes with transfected APC2 in large aggregates around the nucleus (C3, arrow). In comparison, β -catenin is only found at the membrane in the untransfected cells (arrowhead). Transfected SKOV3 cells were double stained for APC2 (D1) and tubulin (D2). Overexpressed APC2 localizes with some but not all microtubules (D3, arrows). All images are at a magnification of $\times 630$. In E, SDS-PAGE analysis was performed on a 3-8% Tris-Acetate gel. SKOV3 ovarian cancer cells express low levels of APC2 as shown by Western blot with the APC2 IgY antibody. Exogenously expressed APC2 detected four different molecular weight species.



WB: APC2

Table 3 APC2 expression

Cell line	Type	APC2 expression ^a	Cell line	Type	APC2 expression	Tissue	APC2 expression
A1N4	Breast	+ ²	ZR-75-1	Breast	+ ¹	Colon	+ ²
BT20	Breast	+ ¹	SW480	Colon	+ ^{1,2}	Ovary	+ ²
HBL-100	Breast	+ ^{1,2}	LS-123	Colon	+ ¹	Testis	+ ²
MCF-7	Breast	+ ²	T84	Colon	+ ¹	Spleen	+ ²
MCF-10A	Breast	+ ²	A549	Lung	+ ^{1,2}	Periph. bl. leuk.	+ ²
MDA-MB-134	Breast	+ ²	Calu-3	Lung	+ ¹	Brain	+ ²
MDA-MB-157	Breast	+/- ¹	G361	Melanoma	+ ²	Sm. intestine	+ ²
MDA-MB-453	Breast	+ ^{1,2}	SKOV3	Ovary	+/- ¹	Prostate	+ ²
MDA-MB-231	Breast	+ ²	U87	Brain	+ ¹	Thymus	+ ²
MDA-MB-436	Breast	+ ¹	A-431	Epidermoid	+ ²		+ ²
MDA-MB-468	Breast	+ ^{1,2}	MOLT-4	Leukemia	- ²		- ²
MDA-MB-435	Breast	+ ¹	Burkitt's Raji	Lymphoma	- ²		- ²
SKBR3	Breast	+ ^{1,2}	HL-60	Leukemia	- ¹		- ¹
T47D	Breast	+ ^{1,2}	K-562	Leukemia	+/- ¹		+/- ¹

1 = protein, 2 = RNA; +/- = low levels.

level (designated as "+" in Table 3; Ref. 12). In some cells, APC2 levels were reduced but still detectable (+/-). APC2 expression, like APC, is greatest in the brain; however, there are differing levels in different brain regions with very little expression in the cerebellum and cerebral cortex (results not shown). Lymphoid tissues and lymphoma cell lines had no detectable APC2 at the mRNA or protein level with the exception of K-562 leukemia cells, which express low levels of APC2 (Fig. 3).

Both rabbit and chicken hAPC2 antibodies were affinity purified on an antigen-coupled CnBr column. Western blot analysis determined that both antibodies were specific to hAPC2 with no cross-reactivity to APC (Fig. 3A). This was confirmed using the SW480 colon cancer cell line that contains a COOH-terminally truncated form of APC. Neither rabbit nor chicken hAPC2 antibodies detect this truncated APC protein, although it contains the conserved NH₂ terminus. The predicted molecular weight of full-length APC is $M_r \sim 310,000$ and that of APC2 is $M_r \sim 245,000$. In addition, APC2 is present in T84 cells, which have a homozygous deletion of the APC gene. To additionally determine specificity, we blocked the antibody with recombinant antigen before Western blot analysis and found that all bands are specific to APC2 (results not shown). Similarly, when preimmune IgY was used to probe Western blots, no staining was observed (data not shown). Western blot analysis showed that APC2 is expressed in many cell lines, including SKBR3, SW480, MDCK, MDA-MB-157, and 436 (Fig. 3B). HL-60 lymphoma cells have no detectable APC2 protein, which correlates with the mRNA data. A characteristic pattern of immunoreactive species was observed. Three major bands larger than M_r 200,000 and three smaller molecular weight species of $M_r \sim 121,000$; 81,000; and 51,000 (data not shown on this blot) were present consistently. Other cell lines, e.g., MDA-MB-157 and SKOV3, have significantly less of all bands. The presence of multiple bands by Western blotting with NH₂-terminal APC2 antibodies is similar to that observed for APC using NH₂-terminal APC antibodies (31). In the case of APC, the multiple banding pattern has been ascribed to a combination of multiple splice variants and to degradation products. Because several lower molecular weight species are present in cells that are transfected with full-length APC2 (Fig. 2), it is likely that these bands represent degradation products. Some differences in the pattern of immunoreactive species were observed when endogenous APC2 was compared in different cell lines and when compared with exogenously expressed APC2. These variations are likely to represent variable degrees of proteolytic degradation in the different situations. However, it is possible that like APC, APC2 may also have many splice variants.

The NH₂-terminal region of APC2 contains the highly conserved dimerization domain. This region in APC has been shown to dimerize *in vitro* (32, 33). To determine whether APC associates with APC2,

APC2 was immunoprecipitated with the purified rabbit antibody, and APC was detected using APC Ab-1 in SW480 and HBL-100 cells (Fig. 3C). Full-length APC was detected in HBL-100 cells, and the M_r 150,000 truncated form of APC was detected in SW480 cells. This result demonstrates that APC and APC2 can either dimerize or associate in a complex in a detergent soluble lysate.

Subcellular Localization of APC2. To investigate the localization of endogenous APC2 in the cell, we performed immunocytochemistry on 10 cell lines, including SKBR3 breast cancer cells, MDCK normal

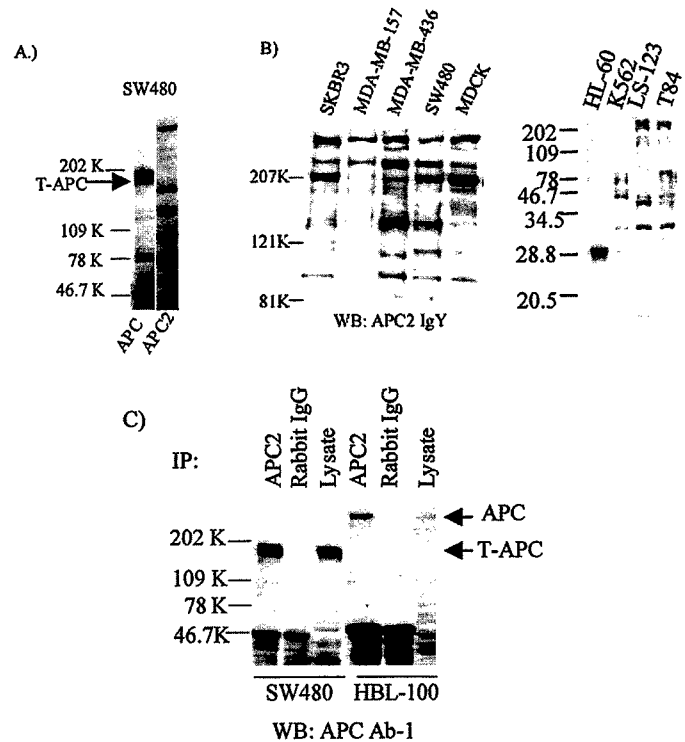


Fig. 3. Expression of APC2 and Western blot of cell lysates comparing APC2 and APC. In A, SW480 cell lysates, containing a truncated form of APC (T-APC), were used to compare affinity-purified APC2 rabbit antibody (1 μ g/ml) to APC antibody-1 (1 μ g/ml). SDS-PAGE analysis was performed on a 4–12% Tris-Glycine gel. No cross-reactivity could be found. The affinity-purified APC2 IgY antibody gave similar results (results not shown). In B, varying protein patterns of APC2 are observed by Western blot analysis of five different cell lysates using the IgY antibody (1 μ g/ml). Equal amounts of protein (60 μ g) were loaded in each lane. SDS-PAGE analysis was performed on a 3–8% Tris-Acetate gel. Note that HL-60 and K-562 lymphoma cell lines have no detectable APC2 as shown on a 4–12% Tris-Glycine gel. In C, APC2 was immunoprecipitated from SW480 and HBL-100 cell lysates using the affinity-purified rabbit antibody. Rabbit IgG was used as a control. Complexes and a control lysate were analyzed for APC by Western blot using APC Ab-1 (1 μ g/ml). The truncated form of APC found in SW480 cells and full-length APC found in HBL-100 cells exist in a complex with APC2.

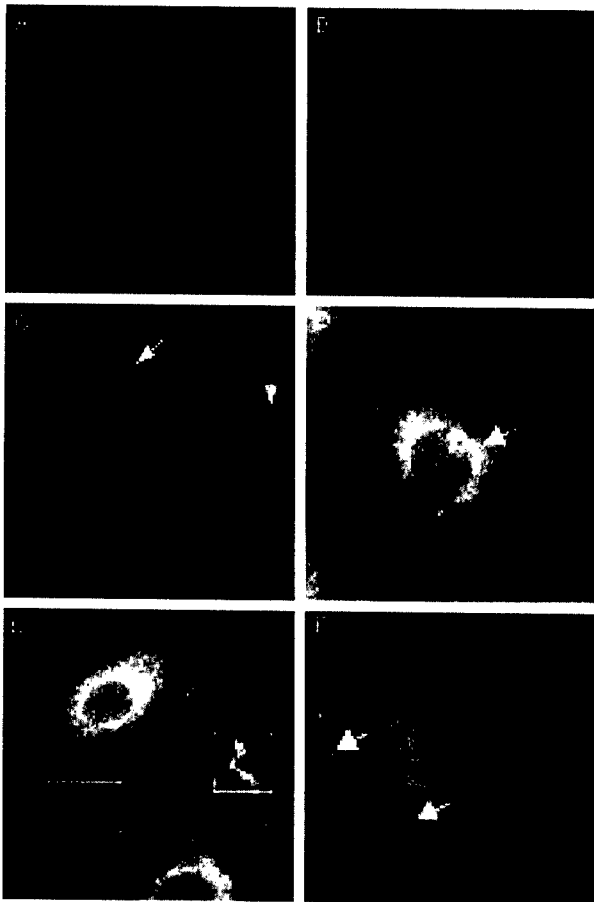


Fig. 4. Immunocytochemical staining for endogenous APC2. In A, SKBR3 cells were stained using preimmune IgY (3 $\mu\text{g/ml}$). Little staining could be seen even in this overexposed image. B, MDA-MB-157 cells stained using IgY antibody blocked with APC2 protein. C, MDA-MB-157 cells stained for APC2 using APC2 IgY antibody (1 $\mu\text{g/ml}$). APC2 can be seen concentrated along filamentous structures, as well as concentrated along the membrane (arrows). In D, A549 cells were stained with APC2 affinity-purified IgY antibody (1 $\mu\text{g/ml}$). Arrow, staining resembling the Golgi apparatus surrounding the nucleus. E, A549 cells stained for APC2 as above. Box, a region of small vesicles/particles concentrated in a lamellipodia membrane. F, A549 cells again stained for APC2. Arrows, staining resembling the Golgi apparatus surrounding the nucleus and staining along actin filaments.

canine kidney cells, SW480 colon cancer cells, and A549 lung carcinoma cells. Although both rabbit and chicken antibodies exhibited a similar staining pattern by immunocytochemistry, the chicken antibody was exceptional and was used for these studies. Preimmune chicken IgY and antigen-blocked antibody, as well as IgY before antigen affinity purification, were completely negative (Fig. 4, A and B). Specific APC2 staining was similar in all cell lines and was observed diffusely in the cytoplasm, as well as being associated with tubular structures adjacent to the nucleus that resembled the Golgi apparatus (Fig. 4). Staining was also concentrated along filamentous structures and in what appeared to be lamellipodia membranes.

APC2 Association with Actin Filaments. As was observed with exogenously expressed APC2 in SKOV3 cells, endogenous APC2 colocalized with PKC μ at the Golgi apparatus (Fig. 5A1–3). A relationship between APC2 and actin filaments was observed in cells stained with phalloidin (Fig. 5B1–3). However, not all actin filaments stained, and APC2 appeared to be concentrated near actin-associated membrane ruffles and lamellipodia, as well as cell-cell contact sites. Treatment with cytochalasin D, an actin-disrupting agent, causes actin filaments to collapse and coalesce mostly at the cell periphery but also throughout the cell. After treatment with cytochalasin D, APC2 remained associated with the actin filaments in MDA-MB-157 cells (Fig. 5C1–3).

Endogenous APC is localized at the tips of microtubules in MDCK cells and is not associated with actin filaments (1). However, overexpression of APC results in the decoration of microtubules throughout the cell (16, 17). Consistent with this, cytochalasin D treatment does not affect APC staining, but disruption of microtubules with nocodazole does (1).

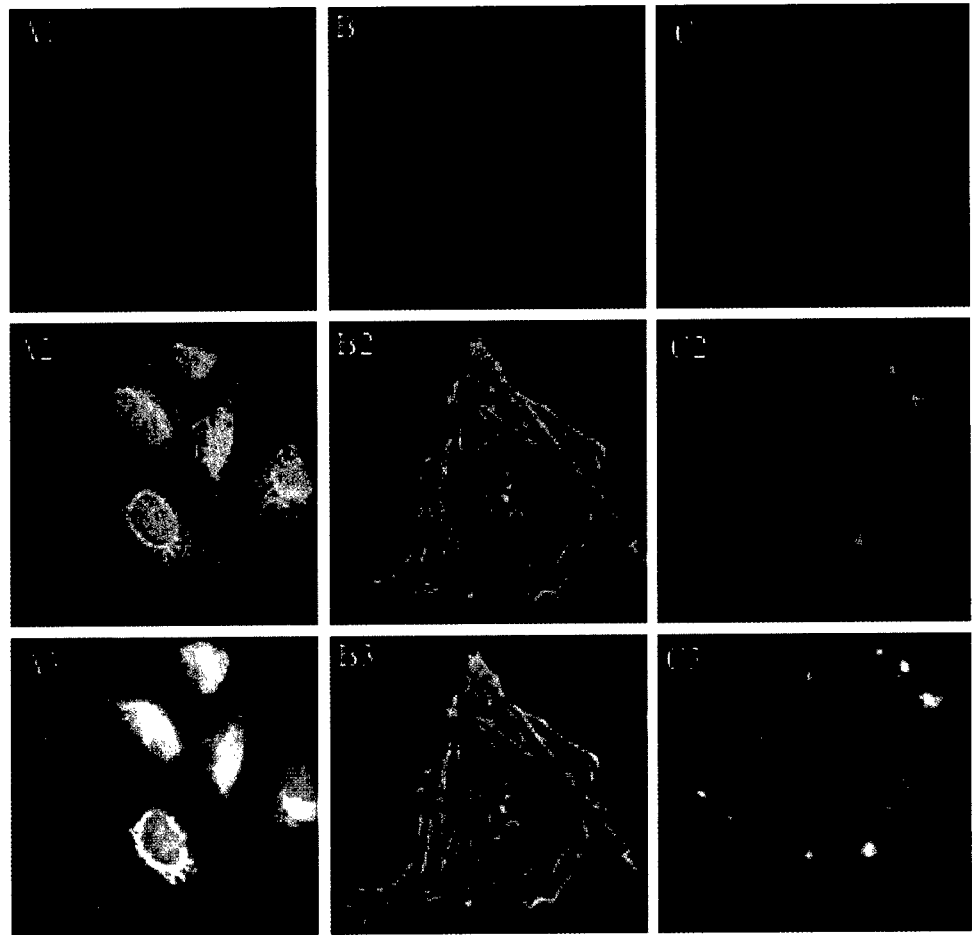
DISCUSSION

Subcellular Localization of hAPC2. hAPC2 is diffusely distributed in the cytoplasm, is localized to the Golgi apparatus, and is associated with actin filaments. In some instances, such as lamellipodia or membrane ruffles, APC2 exhibits a punctate staining at the ends of actin filaments. Unlike APC, APC2 remains associated with the disrupted actin filaments after treatment with cytochalasin D. Recent studies show that dAPC2/E-APC colocalizes with actin caps during *Drosophila* development and negatively regulates wingless signaling in the epidermis (13, 20, 34). These data suggest that although sequence similarity is low, hAPC2 and dAPC2/E-APC may be functional homologues and that both may be involved in actin-associated events, such as motility, as well as in β -catenin signaling.

In contrast, endogenous APC localizes near the ends of microtubules in a punctate pattern but does not colocalize with actin (1); however, when overexpressed, APC associates with microtubules throughout the cell (16, 17). Overexpressed APC2 forms aggregates at the Golgi apparatus and colocalizes with actin filaments as well as some microtubules. Similarly, Nakagawa *et al.* (18) reported that overexpressed, epitope-tagged APCL/APC2 localizes in the perinuclear region and microtubule network. Our results indicate that as is the case with APC, APC2 localization with microtubules in the cell body may only occur when APC2 is present at very high levels. It has been suggested that APC might be involved in microtubule-regulated membrane protrusion and cell migration, as well as inhibition of β -catenin signaling (35). Like APC, APC2 also can inhibit β -catenin signaling (11, 12). Although APC2 and APC do not colocalize at the membrane or cytoskeletal structures, they are both present in the cytoplasm. Immunoprecipitation results show that they can exist in the same complex in this environment. Taken together, these findings suggest an intriguing scenario in which cytoplasmic APC and APC2 regulate related microtubule and actin-based functions and β -catenin signaling either independently or in cooperation. APC and APC2 could cooperate in the cytoplasm or in association with microtubules and actin filaments, respectively, to control such processes as β -catenin signaling and cell motility as suggested by Barth *et al.* (35). In addition, interactions between microtubules and actin filaments occur during cell motility (36). The cellular location and many binding domains of APC2 suggest that it has multiple and perhaps dynamic functions, *e.g.*, recent studies located a nuclear export signal that allows APC, APC2, and E-APC to shuttle between the nucleus and the cytoplasm, thus suggesting a transport mechanism (28–30).

Significance of the Chromosomal Location of APC2. The chromosomal localization of APC2 to chromosome 19p13.3 within 12 fcm of the telomere is significant because this region is associated with PJS and exhibits significant LOH in sporadic cancers. Patients with PJS are more susceptible to breast, testis, gastrointestinal, and ovarian cancers (25). Loss of 19p13.3 occurs in many sporadic cancers, including those of the breast, and is remarkably common in sporadic ovarian carcinomas (~50%; Ref. 26). Ovarian cancers are also characterized by a high rate (~16%) of stabilizing β -catenin mutations (37). However, mutations in the PJS gene, *LKB1*, are not present in most of these sporadic cancers, suggesting the existence of other tumor suppressor loci in this region of chromosome 19 (21, 26). Our fine-mapping analysis shows that APC2 is located in the region of

Fig. 5. APC2 localization at the Golgi apparatus and actin filaments. A549 cells double stained with APC2 and PKC μ or phalloidin. Cells were treated with 2 μ M cytochalasin D for 2 h. In A1, PKC μ clearly stains the Golgi apparatus. In A2, APC2 localizes to the Golgi apparatus. In A3, double staining shows APC2 colocalization with PKC μ at the Golgi apparatus. B1, phalloidin staining of actin filaments in MDA-MB-157 cells. In B2, APC2 is diffusely distributed in the cytoplasm and colocalizes with actin filaments. In B3, double staining shows APC2 associated with actin filaments. C1, MDA-MB-157 cells treated with cytochalasin D and stained with phalloidin. Actin filaments are disrupted. In C2, cells treated with cytochalasin D and stained for APC2. APC2 is disrupted. In C3, double staining shows that APC2 remains associated with actin filaments after treatment with cytochalasin D.



markers D19S883 and WI-19632 between the *LKB1* gene and the site of 100% LOH found in adenoma malignum of the uterine cervix (23). Importantly, we found significant allelic imbalance of APC2 in sporadic ovarian cancers. Therefore, like APC, APC2 could be a tumor suppressor gene important in several cancers, particularly ovarian cancer.

A recent study by Townsley and Bienz (19) showed that the majority of offspring of homozygous *Drosophila* females carrying a weak dAPC2/E-APC mutation die as embryos with defects similar to wingless stimulation. Interestingly, E-APC was lost at the membrane of nurse cells in the ovary. This loss coincided with a loss of armadillo/ β -catenin at the membrane and suggests that cell adhesion might be affected by the weak mutation in E-APC. Our data indicate that if similar mutations occur in hAPC2, they may be relevant in ovarian cancer. At this time, no single nucleotide polymorphisms have been discovered in the APC2 gene. Additional studies searching for single nucleotide polymorphisms and a more formal LOH study will better determine whether APC2 is a tumor suppressor gene.

ACKNOWLEDGMENTS

We thank Y. Nakamura for the full-length APC2/APCL cDNA and P. Polakis for the polyclonal APC antibody. We also thank Michele Dougherty for help with the RT-PCR experiments, Emma Bowden and Susette Mueller for advice on PKC μ antibody, P. Burbello for advice on tubulin, and B. Haddad for information and help with FISH analysis and radiation hybrid screening. Finally, we thank the support of the Lombardi Cancer Center SPORE Imaging and Microscopy Core Facility and the Cytogenetics facility.

REFERENCES

- Nathke, I. S., Adams, C. L., Polakis, P., Sellin, J. H., and Nelson, W. J. The adenomatous polyposis coli tumor suppressor protein localizes to plasma membrane sites involved in active cell migration. *J. Cell Biol.*, 134: 165-179, 1996.
- Polakis, P. The adenomatous polyposis coli (APC) tumor suppressor. *Biochim. Biophys. Acta*, 1332: F127-F147, 1997.
- Munemitsu, S., Albert, I., Souza, B., Rubinfeld, B., and Polakis, P. Regulation of intracellular β -catenin levels by the adenomatous polyposis coli (APC) tumor-suppressor protein. *Proc. Natl. Acad. Sci. USA*, 92: 3046-3050, 1995.
- Shtutman, M., Zhurinsky, J., Simcha, I., Albanese, C., D'Amico, M., Pestell, R., and Ben, Z. The cyclin D1 gene is a target of the β -catenin/LEF-1 pathway. *Proc. Natl. Acad. Sci. USA*, 96: 5522-5527, 1999.
- Orford, K., Orford, C. C., and Byers, S. W. Exogenous expression of β catenin regulates contact inhibition, anchorage-independent growth, anoikis and radiation-induced cell-cycle arrest. *J. Cell Biol.*, 146: 1-13, 1999.
- Korinek, V., Barker, N., Morin, P. J., van Wichen, D., de Weger, R., Kinzler, K. W., Vogelstein, B., and Clevers, H. Constitutive transcriptional activation by a β -catenin-Tcf complex in APC^{-/-} colon carcinoma. *Science (Wash. DC)*, 275: 1784-1787, 1997.
- Tetsu, O., and McCormick, F. β -catenin regulates expression of cyclin D1 in colon carcinoma cells. *Nature (Lond.)*, 398: 422-426, 1999.
- He, T. C., Sparks, A. B., Rago, C., Hermeking, H., Zawel, L., da Costa, L. T., Morin, P. J., Vogelstein, B., and Kinzler, K. W. Identification of c-Myc as a target of the APC pathway. *Science (Wash. DC)*, 281: 1509-1512, 1998.
- Munemitsu, S., Albert, I., Rubinfeld, B., and Polakis, P. Deletion of an amino-terminal sequence stabilizes β -catenin *in vivo* and promotes hyperphosphorylation of the adenomatous polyposis coli tumor suppressor protein. *Mol. Cell. Biol.*, 16: 4088-4094, 1996.
- Orford, K., Crockett, C., Jensen, J. P., Weissman, A. M., and Byers, S. W. Serine phosphorylation-regulated ubiquitination and degradation of β catenin. *J. Biol. Chem.*, 272: 24735-24738, 1997.
- Nakagawa, H., Murata, Y., Koyama, K., Fujiyama, A., Miyoshi, Y., Monden, M., Akiyama, T., and Nakamura, Y. Identification of a brain-specific APC homologue, APCL, and its interaction with β -catenin. *Cancer Res.*, 58: 5176-5181, 1998.
- van Es, J., Kirkpatrick, M., van de Wetering, M., Molenaar, M., Miles, A., Kuipers, J., Destree, O., Peifer, M., and Clevers, H. Identification of APC2, a homologue of the adenomatous polyposis coli tumor suppressor. *Curr. Biol.*, 9: 105-108, 1999.

13. McCartney, B. M., Dierick, H. A., Kirkpatrick, C., Moline, M. M., Baas, A., Peifer, M., and Bejsovec, A. *Drosophila* APC2 is a cytoskeletally-associated protein that regulates wingless signaling in the embryonic epidermis. *J. Cell Biol.*, *146*: 1303–1318, 1999.
14. Ahmed, Y., Hayashi, S., Levine, A., and Wieschaus, E. Regulation of armadillo by a *Drosophila* APC inhibits neuronal apoptosis during retinal development. *Cell*, *93*: 1171–1182, 1998.
15. Hamada, F., Murata, Y., Nishida, A., Fujita, F., Tomoyasu, Y., Nakamura, M., Toyoshima, K., Tabata, T., Ueno, N., and Akiyama, T. Identification and characterization of E-APC, a novel *Drosophila* homologue of the tumor suppressor APC. *Genes Cells*, *4*: 465–474, 1999.
16. Smith, K. J., Levy, D. B., Maupin, P., Pollard, T. D., Vogelstein, B., and Kinzler, K. W. Wild-type but not mutant APC associates with the microtubule cytoskeleton. *Cancer Res.*, *54*: 3672–3675, 1994.
17. Munemitsu, S., Souza, B., Muller, O., Albert, I., Rubinfeld, B., and Polakis, P. The APC gene product associates with microtubules *in vivo* and promotes their assembly *in vitro*. *Cancer Res.*, *54*: 3676–3681, 1994.
18. Nakagawa, H., Koyama, K., Murata, Y., Morito, M., Akiyama, T., and Nakamura, Y. EB3, a novel member of the EBI family preferentially expressed in the central nervous system, binds to a CNS-specific APC homologue. *Oncogene*, *19*: 210–216, 2000.
19. Townsley, F. M., and Bienz, M. Actin-dependent membrane association of a *Drosophila* epithelial APC protein and its effect on junctional Armadillo. *Curr. Biol.*, *10*: 1339–1348, 2000.
20. Yu, X., and Bienz, M. Ubiquitous expression of a *Drosophila* adenomatous polyposis coli homolog and its localization in cortical actin caps. *Mech. Dev.*, *84*: 69–73, 1999.
21. Bignell, G. R., Barfoot, R., Seal, S., Collins, N., Warren, W., and Stratton, M. R. Low frequency of somatic mutations in the LKB1/Peutz-Jeghers syndrome gene in sporadic breast cancer. *Cancer Res.*, *58*: 1384–1386, 1998.
22. Avizienyte, E., Roth, S., Loukola, A., Hemminki, A., Lothe, R. A., Stenwig, A. E., Fossa, S. D., Salovaara, R., and Aaltonen, L. A. Somatic mutations in LKB1 are rare in sporadic colorectal and testicular tumors. *Cancer Res.*, *58*: 2087–2090, 1998.
23. Lee, J. Y., Dong, S. M., Kim, H. S., Kim, S. Y., Na, E. Y., Shin, M. S., Lee, S. H., Park, W. S., Kim, K. M., Lee, Y. S., Jang, J. J., and Yoo, N. J. A distinct region of chromosome 19p13.3 associated with the sporadic form of adenoma malignum of the uterine cervix. *Cancer Res.*, *58*: 1140–1143, 1998.
24. Sommers, C. L., Gelmann, E. P., Kemler, R., Cowin, P., and Byers, S. W. Alterations in β -catenin phosphorylation and plakoglobin expression in human breast cancer cell lines. *Cancer Res.*, *54*: 3544–3552, 1994.
25. Mehenni, H., Gehrig, C., Nezu, J., Oku, A., Shimane, M., Rossier, C., Guex, N., Blouin, J. L., Scott, H. S., and Antonarakis, S. E. Loss of LKB1 kinase activity in Peutz-Jeghers syndrome and evidence for allelic and locus heterogeneity. *Am. J. Hum. Genet.*, *63*: 1641–1650, 1998.
26. Wang, Z. J., Churchman, M., Campbell, I. G., Xu, W. H., Yan, Z. Y., McCluggage, W. G., Foulkes, W. D., and Tomlinson, I. P. Allele loss and mutation screen at the Peutz-Jeghers (*LKB1*) locus (*19p13.3*) in sporadic ovarian tumours. *Br. J. Cancer*, *80*: 70–72, 1999.
27. Johannes, F. J., Prestle, J., Eis, S., Oberhagemann, P., and Pfizenmaier, K. PKC α is a novel, atypical member of the protein kinase C family. *J. Biol. Chem.*, *269*: 6140–6148, 1994.
28. Rosin-Arbesfeld, R., Townsley, F., and Bienz, M. The APC tumour suppressor has a nuclear export function. *Nature (Lond.)*, *406*: 1009–1012, 2000.
29. Henderson, B. R. Nuclear-cytoplasmic shuttling of APC regulates β -catenin subcellular localization and turnover. *Nat. Cell Biol.*, *2*: 653–660, 2000.
30. Neufeld, K. L., Nix, D. A., Bogerd, H., Kang, Y., Beckerle, M. C., Cullen, B. R., and White, R. L. Adenomatous polyposis coli protein contains two nuclear export signals and shuttles between the nucleus and cytoplasm. *Proc. Natl. Acad. Sci. USA*, *97*: 12085–12090, 2000.
31. Santoro, I. M., and Groden, J. Alternative splicing of the APC gene and its association with terminal differentiation. *Cancer Res.*, *57*: 488–494, 1997.
32. Su, L. K., Johnson, K. A., Smith, K. J., Hill, D. E., Vogelstein, B., and Kinzler, K. W. Association between wild type and mutant APC gene products. *Cancer Res.*, *53*: 2728–2731, 1993.
33. Joslyn, G., Richardson, D. S., White, R., and Alber, T. Dimer formation by an N-terminal coiled coil in the APC protein. *Proc. Natl. Acad. Sci. USA*, *90*: 11109–11113, 1993.
34. Yu, X., Waltzer, L., and Bienz, M. A new *Drosophila* APC homologue associated with adhesive zones of epithelial cells. *Nat. Cell Biol.*, *1*: 144–151, 1999.
35. Barth, A. I., Nathke, I. S., and Nelson, W. J. Cadherins, catenins and APC protein: interplay between cytoskeletal complexes and signaling pathways. *Curr. Opin. Cell Biol.*, *9*: 683–690, 1997.
36. Waterman-Storer, C. M., and Salmon, E. Positive feedback interactions between microtubule and actin dynamics during cell motility. *Curr. Opin. Cell Biol.*, *11*: 61–67, 1999.
37. Wright, K., Wilson, P., Morland, S., Campbell, I., Walsh, M., Hurst, T., Ward, B., Cummings, M., and Chenevix-Trench, G. β -catenin mutation and expression analysis in ovarian cancer: exon 3 mutations and nuclear translocation in 16% of endometrioid tumours. *Int. J. Cancer*, *82*: 625–629, 1999.