

Award Number: DAMD17-01-1-0286

TITLE: Early Detection of Breast Cancer by Molecular
Analysis of Ductal Lavage Fluid

PRINCIPAL INVESTIGATOR: Saraswati Sukumar, Ph.D.

CONTRACTING ORGANIZATION: John Hopkins University School of Medicine
Baltimore, Maryland 21205

REPORT DATE: June 2003

TYPE OF REPORT: Annual

PREPARED FOR: U.S. Army Medical Research and Materiel Command
Fort Detrick, Maryland 21702-5012

DISTRIBUTION STATEMENT: Approved for Public Release;
Distribution Unlimited

The views, opinions and/or findings contained in this report are those of the author(s) and should not be construed as an official Department of the Army position, policy or decision unless so designated by other documentation.

20031106 059

REPORT DOCUMENTATION PAGEForm Approved
OMB No. 074-0188

Public reporting burden for this collection of information is estimated to average 1 hour per response, including the time for reviewing instructions, searching existing data sources, gathering and maintaining the data needed, and completing and reviewing this collection of information. Send comments regarding this burden estimate or any other aspect of this collection of information, including suggestions for reducing this burden to Washington Headquarters Services, Directorate for Information Operations and Reports, 1215 Jefferson Davis Highway, Suite 1204, Arlington, VA 22202-4302, and to the Office of Management and Budget, Paperwork Reduction Project (0704-0188), Washington, DC 20503

1. AGENCY USE ONLY (Leave blank)		2. REPORT DATE June 2003	3. REPORT TYPE AND DATES COVERED Annual (1 Jun 02 - 31 May 03)	
4. TITLE AND SUBTITLE Early Detection of Breast Cancer by Molecular Analysis of Ductal Lavage Fluid			5. FUNDING NUMBERS DAMD17-01-1-0286	
6. AUTHOR(S) Saraswati Sukumar, Ph.D.				
7. PERFORMING ORGANIZATION NAME(S) AND ADDRESS(ES) John Hopkins University School of Medicine Baltimore, Maryland 21205 E-Mail: saras@jhmi.edu			8. PERFORMING ORGANIZATION REPORT NUMBER	
9. SPONSORING / MONITORING AGENCY NAME(S) AND ADDRESS(ES) U.S. Army Medical Research and Materiel Command Fort Detrick, Maryland 21702-5012			10. SPONSORING / MONITORING AGENCY REPORT NUMBER	
11. SUPPLEMENTARY NOTES Original contains color plates: All DTIC reproductions will be in black and white				
12a. DISTRIBUTION / AVAILABILITY STATEMENT Approved for Public Release; Distribution Unlimited			12b. DISTRIBUTION CODE	
13. ABSTRACT (Maximum 200 Words) <u>Reliable intermediate biological markers for breast cancer risk, that can be easily detected in both pre- and post-menopausal women, do not exist at the present time. For more than 20 years, the ability to access breast ductal fluid through the nipple has prompted initiatives to develop a PAP-like test for breast cancer. Yields were variable, not every woman yielded fluid, and there was no assurance of obtaining samples from the entire length of the ducts. In this proposal, we will use a 1) a facile ductal lavage (DL) technique using cannulating catheters which flushes each duct to yield thousands of ductal cells. 2) a panel of markers consisting of three genes, Cyclin D2, Twist and retinoic acid receptor β2 (RARβ2), which are aberrantly hypermethylated in breast cancer cells. We will standardize the techniques using fluid from cancer patients, and then evaluate the frequency of cells positive by MSP assays in ductal lavage obtained from women with a high risk of developing breast cancer, such as patients with lobular carcinoma, patients with cancer in one breast, and those with mammographically suspicious lesions. Thus, we aim to develop a PAP test for the breast.</u>				
14. SUBJECT TERMS			15. NUMBER OF PAGES 16	
			16. PRICE CODE	
17. SECURITY CLASSIFICATION OF REPORT Unclassified	18. SECURITY CLASSIFICATION OF THIS PAGE Unclassified	19. SECURITY CLASSIFICATION OF ABSTRACT Unclassified	20. LIMITATION OF ABSTRACT Unlimited	

Table of Contents

Cover.....	1
SF 298.....	2
Table of Contents.....	3
Introduction.....	4
Body.....	4
Key Research Accomplishments.....	9
Reportable Outcomes.....	9
Conclusions.....	10
References.....	10
Appendices.....	12

Introduction:

Detected early, breast cancer is an eminently curable disease. However, reliable intermediate biological markers for breast cancer risk, that can be easily detected in both pre- and post-menopausal women, do not exist at the present time. Conventional cytological examination of breast cells is a fairly reliable test to detect breast cancer cells. However, its sensitivity and specificity could be complemented and supplemented with molecular diagnostic tests. It is increasingly clear that silencing of gene expression by promoter hypermethylation is a common feature of cancer and is seldom seen in normal tissues except for imprinted genes and genes on the inactive X chromosome. Using a sensitive assay called methylation specific PCR (1), initial studies show that MSP can detect 1 methylated gene copy in 1000 unmethylated gene copies, attesting to the sensitivity of this approach. Importantly, the assays are highly specific in that no abnormal methylation was detected in serum DNA if the same alteration was not present in the primary tumor. Promoter methylation has been reported in 15-50% of primary breast tumors for the following genes: 14.3.3 sigma (2,3), RAR-beta (4, 5), cyclin D2 (6), HOXA5 (7), Twist (8), RASSF1A (9, 10, 11), HIN-1 (12) and NES-1 (13), to name a few.

Body:

Month 1 to 6: Optimize conditions for duplex or multiplex assays for the 5 markers RAR β , RASSF1A, Twist, cyclin D2, and HIN-1 using fluid spiked with varying numbers of tumor cells.

We standardized quantitative methylation specific PCR (14) for all five genes. Here the readout is of the percentage of methylation present in each sample, and one can calculate how many microgram equivalents of methylated DNA are present in the particular sample. This method is able to detect down to 20 picogram of methylated DNA in vast excess of unmethylated DNA from normal cells. However, DNA recovered from these samples is a limiting factor, which we have now addressed by developing a multiplex MSP assay.

Then test the MSP markers on ductal lavage from tumor-containing breast of 25 women just prior to surgery for known lesion.

Ductal lavage was performed on 11 women so far in the IRB approved trial on ductal lavage, just prior to surgery for a biopsy proven lesion. These fluids are currently undergoing cytology analysis. Once the analysis is complete, DNA will be extracted from the cytospin preparations and tested for the presence of methylated genes.

Months 7 to 12: If sample is limiting, perform RAR β , RASSF1A, Twist, cyclin D2, and then HIN-1 in a stepwise fashion, going from the highest (85%) to the lowest (30%) incidence markers. Samples may need pre-amplification to enable use of all 5 markers on the varying numbers of tumor cells obtained by ductal lavage. Standardize this methodology. Then test the MSP markers on ductal lavage from tumor-containing breast of 25 additional women just prior to surgery for known lesion.

We have made considerable progress on this specific aim. Knowing that cells from ductal lavage will always remain a limiting factor, we have developed a multiplex quantitative Methylation specific PCR. This PCR test allows us to test all 5 genes with little limitation of sample size. It is important to ascertain whether the increase in sensitivity of this method does not result in loss of specificity. Also, we would like to set the normal range of values from normal tissue, thus setting the cut-off value above which the values can be considered abnormal. This has been completed for each gene using reduction mammoplasty specimens. Also to determine if epithelial or stromal cells provide false positive values for some genes, we microdissected cells from sections of benign and normal breast sections and performed the same assay. The cut-off values have been set at the higher limit of 1% methylation as being normal values.

We plan to use a novel quantitative multiplex methylation specific PCR (MQ-MSP) assay, recently developed by us, on cells from the fixed and stained cytopsin preparation to detect 5 genes on DNA obtained from the ductal cells of breast cancer patients. The five genes, Cyclin D2, RAR- β , Twist, RASSF1A, and HIN-1, were selected because they are specifically and frequently (more than 30%) hypermethylated in breast tumor cells, but are not methylated in normal blood cells or normal breast cells. Actin is the 6th gene which is amplified as an internal control for normalization of the reactions based on total DNA content. Multiplex Q-MSP test is very specific, is conducted in a multi-well format suited to large-scale analysis, and provides finite values for the amount of methylated DNA present in each sample as the reaction is progressing in real time (our unpublished data). More importantly, the test is objective, and its sensitivity is well established. The panel of these 5 markers can detect breast cancer (as early as DCIS) in 100% of women (our unpublished data). Most tumors contain 1 or more markers hypermethylated. Combining the sensitivity and objectivity of the test with the specificity of the markers, we have a good chance of identifying women at high risk of developing breast cancer.

Standardization of the Multiplex Q-MSP.

Quantitative real-time -MSP (Q-MSP) test is very specific, is conducted in a multi-well format suited to large-scale analysis, and provides values for the relative amount of methylated and unmethylated DNA present in each sample as the reaction is progressing (in real time). More importantly, unlike conventional MSP (1), the test is objective, and its sensitivity is well established.

We have standardized this assay in a multiplexed format for 6 genes. Using only one aliquot (out of 10 μ l) of the sodium bisulfite treated DNA, in Step 1 all the genes in the panel are amplified in one tube. The first reaction contained 6 gene-specific "external" primers that were designed to anneal to genomic DNA independent of methylation status of the genome (do not contain any CpGs in their own sequence). In step 2, this DNA is diluted, and subjected to Q-MSP for both methylated and unmethylated sequences, using 3 gene-specific primers (2 flanking primers and 1 probe) for the CpG containing region. We have standardized the analysis for the RASSF1A gene in Step 2. We determined that human sperm DNA (HSD) is unmethylated (100%), and that MDA MB 231 breast cancer cell line DNA is methylated (100%) at the RASSF1A promoter (Figure 1A). Human sperm DNA and 231 DNA was mixed in roughly equal proportions. 20 ng of the mixture

DNA was amplified by 35 cycles in a 25 microliter PCR reaction using forward and reverse primers for RASSF1A, RAR β , Cyclin D2, Twist, Hin-1, and actin (6 pairs of primers used simultaneously) in the multiplex PCR reaction. This DNA was then used as a source of the "standard".

To provide a quantitative estimate of the amount of methylation present in each sample, the following was done. In each run, the multiplexed DNA "standard" was serially diluted and amplified with RASSF1A primers specific for either methylated or unmethylated DNA. By plotting Ct vs dilution, a linear trend line with a correlation coefficient $>.99$ was established. It is also established that the slope of the U curve and M curve are approximately the same, indicating both reactions are occurring with the same efficiency (e.g. 2 fold increase per cycle, 10 fold increase every 3.3 cycles). DNA dilution equivalents in the test samples were extrapolated off the standard curve for 20 ng HSD and 231 genomic DNA. % Methylated DNA is calculated by-

$$\% \text{ Methylated DNA} = [M/(U+M)]100$$

Figure 1A

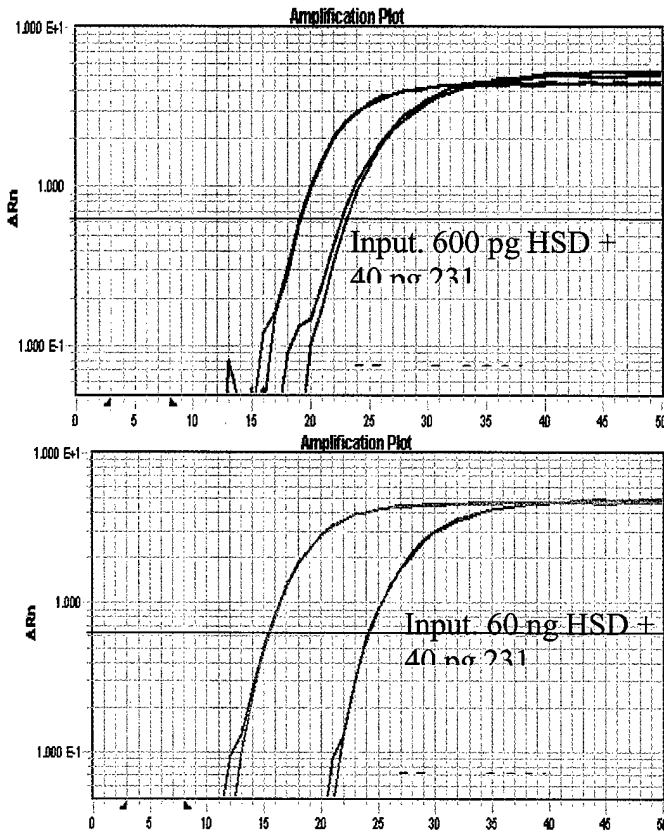


Figure 1B

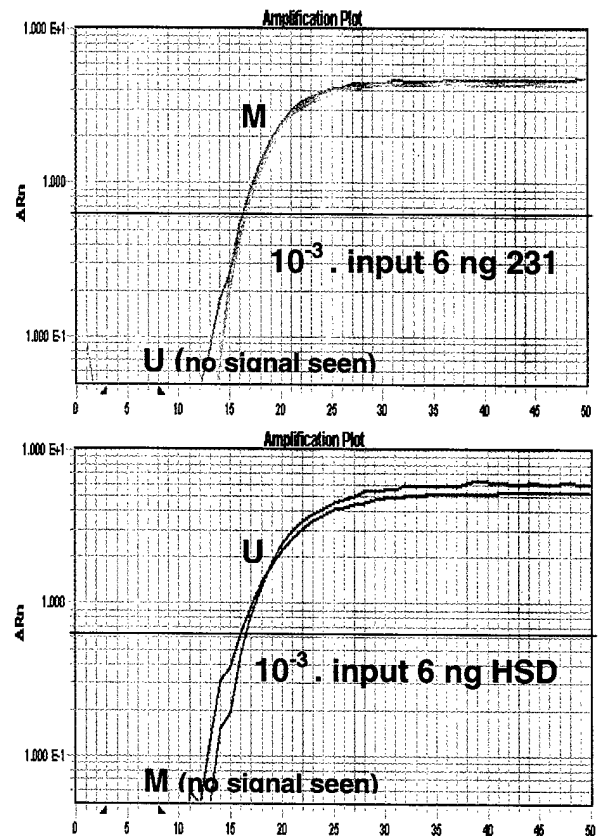


Figure 1A. M-Q-MSP is sensitive. Panel A: Multiplexed DNA (mixture) was diluted (10⁻³) and Q-MSP was performed using primers specific for the unmethylated (U) or methylated (M) RASSF1A promoter. Panel A: 600 pg of HSD plus 40 pg 231DNA. Panel B: 60 ng of HSD with 40 pg of 231 DNA.

Figure 1B. M-Q-MSP is specific. Primers for methylated DNA (231) do not detect unmethylated HSD (panel A), and vice versa (panel B). One ul of the 1 in 1000 dilution of the multiplex reaction was used in the Q-MSP reaction.

Table 1

RASSF1A Methylation in Ductal Carcinoma				
ID		U	M	% M
1	DCIS / 1	81303.46	0.00	0.00
2	DCIS / 1	186121.62	0.00	0.00
3	DCIS / 1	7840.00	1661.54	17.49
4	DCIS / 2	1221993.9	194693.08	14.00
5	DCIS / 3	414613.88	46676.41	10.12
6	DCIS / 3	3072.88	2803.76	47.71
7	DCIS / 3	462237.84	121006.98	20.75
8	DCIS / 3	511980.94	130374.00	20.30
9	IDC	60212.73	31235.53	34.16
10	IDC	3199.05	3121.15	49.38
11	IDC	86387.04	288.61	0.33
12	IDC	66219.05	0.00	0.00

Table 2

RASSF1A Methylation In Reduction Mammoplasty Specimens					
ID		U	M	% M	Age over 49
1		96731.95	0.00	0.00	
2		180330.70	0.00	0.00	X
3		155594.48	0.00	0.00	X
4		13343.36	0.00	0.00	
5		1792.47	0.00	0.00	
6		2103863.80	612793.20	18.00	X
7		42132.44	0.00	0.00	
8		255753.55	0.00	0.00	X
9		301421.44	0.00	0.00	X
10		9011.11	0.00	0.00	
11		342109.30	0.00	0.00	
12		185307.84	429523.60	69.00	
13		1580726.90	0.00	0.00	X
14		189218.97	0.00	0.00	X
15		9175290.00	0.00	0.00	
16		238118.89	0.00	0.00	
17		344951.38	0.77	0.00	
18		7317194.50	0.00	0.00	
19		8428731.00	0.00	0.00	
20		3189157.20	0.56	0.00	
21		1493306.80	0.00	0.00	
22		937980.30	0.00	0.00	
23		448169.25	3235.87	0.72	
24		32345.32	0.00	0.00	
25		2491771.50	0.00	0.00	
26		511569.62	0.00	0.00	
27		1032461.94	0.00	0.00	X

Table 1. By M-Q-MSP RASSF1A is frequently methylated in DCIS and invasive ductal carcinoma. Levels of RASSF1A methylation of ductal carcinoma in situ (Grade 1, 2 or 3), and invasive carcinomas.

Table 2. Twenty-seven mammoplasty specimens of women with benign disease, including 19 samples of tissues from under the age of 50, and 8 samples from over the age of 50 were analyzed by M-Q-MSP. Sample #16 and Sample #12 contained 18%, and 69% values for methylated DNA levels. We are investigating the hyperplasias in these tissues more closely. Sample #23 contained less than 1% methylated alleles. No age-related methylation was observed in this small sampling.

Analysis of 28 specimens of normal peripheral blood cells showed abundant unmethylated DNA but less than 0.01% of methylated DNA. We then investigated the status of RASSF1A methylation in reduction mammoplasty specimens (Table 2).

Sample preparation and M-Q-MSP analysis. DNA will be extracted from the cytospin preparation following diagnosis and/or immunohistochemistry. A minimum of 20 breast

epithelial cells from either source is sufficient for MSP analysis. The coverslip is removed after soaking in xylene, the section is scraped and placed in 50-100 ul of TNES with proteinase K for digestion overnight. After centrifugation at 14K, the supernatant DNA is treated with sodium bisulfite, and extracted in 10 ul of water (1). One ul of this is adequate for performing multiplex and Q-MSP for 6 or more genes (our unpublished work). Amplicon sizes for the seven genes vary from 70-80 bp, and all of them will be PCR-amplified under identical experimental conditions.

The contents of a typical 96 well plate consists of the following: 1) 30 patient samples, two wells per sample (one well with U or and one well with M primers), 2) two standard DNA dilution curves (dilutions of 10^{-3} , 10^{-5} , 10^{-7} , and 10^{-9} in duplicate each for U and for M primer), two genomic DNA standards of known amounts of DNA (20 ng human sperm DNA and MDA MB 231 DNA determined by OD₂₆₀) in duplicate wells, 3) two multiplex DNA standards of known % M (200/13 copies and 20,000/13 copies U/M), and water controls in duplicate from the first PCR reaction that serve as No Template Control (NTC) for each primer set U and M.

Potential Problems.

Amount of DNA available may be too low: Small quantities of DNA will be extracted from ductal lavage cells of women with DCIS and small cancers, and even less from normal individuals. We have previously successfully conducted studies on ductal cells obtained from 150 women with and without cancer. In many instances, the pathologist deemed the sample not suitable for cytology- yet we were able to obtain results by conventional MSP. To enable us to use more markers and to circumvent this problem, we have now developed the multiplex approach- with the potential to analyze 100s of genes. The quantitative feature of this assay has allowed us to set the cutoff point for normal tissue at less than 1% methylation compared to the unmethylated signal.

Sensitivity may be too low: We have successfully multiplexed 6 gene sets, and shown data for RASSF1A (Figure 1, Table 1) that look very promising. The sensitivity of our methodology is at its desired level- we are able to detect down to 40 pg of hypermethylated DNA in presence of 40 ng unmethylated DNA. Improvements by changing magnesium concentration, primer locations, and other experimental PCR conditions will be tested. We would like our marker panel to distinguish between benign and atypical hyperplasia- this experiment has never been done.

Method may detect too many positives- may not be specific: In this situation, cytology analysis will be negative and Q-MSP will be positive for the same sample. We have conducted studies on 27 mammoplasty specimens, many of which had fibrocystic changes and a few had ductal hyperplasia. Nearly all of them were negative for methylation. Thus we do not expect rampant positivity in benign disease breasts. The two positive samples appear to be those with hyperplasias, and in one case, papilloma in the contralateral breast. The information obtained from this proposal will be regarded as hypothesis generating, providing the foundation for planning a more definitive clinical trial. In particular, this information will provide the statistics necessary for appropriate power calculation to design a definitive clinical trial.

Months 12-18: Test fluid from contralateral ducts (tumor-free by mammogram and clinical exam) of 50 patients with breast cancer. Complete MSP assays on the fluid

obtained from both breasts of a total of 50 cancer patients. If recovery of cells is not satisfactory, optimize conditions, add patients to the study to get results from approximately 200-300 samples of ductal fluid (2-3 ducts per breast X 50) from 50 individuals. Compare MSP results with cytopathological data, and histopathology of the resected tumor, on each sample.

Months 18-30: Approach high-risk, tumor free women who attend the BOSS (breast ovarian surveillance service) clinic in Johns Hopkins, and other high risk individuals to undergo this procedure. Accrual will be slower in this category until the minimal discomfort involved and potential benefit becomes a publicized fact. Enter 50 individuals into the study. Perform MSP on cells obtained from each ductal lavage, on a total of approximately 200 samples.

Months 30 to 36: Complete comparison of MSP results to cytopathologic and histopathology data, and data obtained by DNA analysis of tumor tissue obtained after surgery. Write and communicate papers.

KEY RESEARCH ACCOMPLISHMENTS:

- 1) The clinical trial has been initiated. Eleven women have undergone ductal lavage of both breasts- the tumored breast and the contralateral high-risk breast. Wash fluids have been stored. Ductal cells are being examined by the cytopathologist.
- 2) A multiplex quantitative methylation specific PCR assay has been developed for all five marker genes, that include RASSF1A and HIN-1. The sensitivity and specificity of the test have been completed.

REPORTABLE OUTCOMES:

Publications

MJ Fackler, E Evron, SA. Khan and S Sukumar. Novel agents for chemoprevention, screening methods and sampling issues. J of Mammary Gland Biology and Cancer, (in press. 2003)

Fackler MJ, Mc Veigh M, Evron E, Mehrotra J, Sukumar S, Argani P. DNA Methylation of *RASSF1A*, *HIN-1*, *RAR- α* , *Cyclin D2* and *Twist* in *In Situ* and Invasive Lobular Breast Carcinoma (manuscript submitted to International Journal of Cancer), April, 03.

Vali M, Mehrotra J, McVeigh M, Kominsky, S, Sacchi, S, Korz, D, Argani P, and S. Sukumar. Very high incidence of hypermethylated genes in breast cancer metastasis to the bone, brain and lung. (manuscript in preparation)

Mehrotra J, MM Ganpat, Y Kanaan, MJ Fackler, M McVeigh, J Lahti-Domenici, K Polyak, P Argani, E Garrett, T Naab, C Broome, and S Sukumar. Distinct DNA

methylation patterns in breast cancers among African-American and Caucasian women (manuscript in preparation, 03).

Presentations:

June 12, 2003, Howard/Hopkins Partnership Steering Committee Meeting, Howard University Cancer Center, Washington, D.C. "Comparative Gene Expression Analysis in African American and Caucasian Breast Cancer"

March 27-30, 2003, 3rd International Santa Barbara Symposium, The Intraductal Approach to Breast Cancer, Santa Barbara, California, "Detection of Breast Cancer Cells in Ductal Lavage and Blood Using Hypermethylated Gene Markers"

January 7-8, 2003, Institute of Medicine Committee on New Approaches to Early Detection and Diagnosis of Breast Cancer. Workshop on New Approaches to Breast Cancer Detection, Washington, D.C., "The Search for Breast Cancer Biomarkers"

January 22-23, 2003, National Council for Johns Hopkins Medicine, Meeting and Reception, Palm Beach, Florida, "Breast Cancer Research – Dawn of a New Era"

September 25–28, 2002, Era of Hope, Department of Defense Breast Cancer Research Program Meeting, Orange County Convention Center, Orlando, Florida, "Early Detection of Breast Cancer by Molecular Analysis of Ductal Lavage Fluid"

September 19 – 21, 2002, Mildred Scheel Cancer Conference, Frankfurt, Germany, "Gene expression profiling of breast cancer – from bench research to early detection markers"

Patent application – Aberrantly Methylated Genes as Markers of Breast Malignancy (Docket # JHU1630; Ref. # DM-3729)

CONCLUSIONS:

Cells obtained by ductal lavage will prove to be valuable resource for detecting breast cancer cells early. Recognizing the paucity of the cells, methods need to be developed that will increase the specificity and sensitivity of detection methods. This method may prove to be a PAP test for the breast.

REFERENCES:

1. Herman JG, Graff JR, Myohanen S, Nelkin BD, and Baylin SB. Methylation-specific PCR: a novel PCR assay for methylation status of CpG islands. Proc.Natl.Acad.Sci.U.S.A 1996;93: 9821-9826.
2. Ferguson AT, Evron E, Umbricht CB, Pandita TK, Chan TA, Hermeking H, Marks JR, Lambers AR, Futreal PA, Stampfer MR, Sukumar S. High frequency

- of hypermethylation at the 14-3-3 sigma locus leads to gene silencing in breast cancer. *Proc Natl Acad Sci U S A*. 97(11):6049-54, 2000.
3. Umbricht CB, Evron E, Gabrielson E, Ferguson A, Marks J, Sukumar S. Hypermethylation of 14-3-3 sigma (stratifin) is an early event in breast cancer. *Oncogene*. 20(26):3348-53, 2001.
 4. Widschwendter M, Berger J, Muller HM, Zeimet AG, Marth C. Epigenetic downregulation of the retinoic acid receptor-beta2 gene in breast cancer. *J Mammary Gland Biol Neoplasia*. 6(2):193-201. 2001.
 5. Sirchia SM, Ferguson AT, Sironi E, Subramanyan S, Orlandi R, Sukumar S, Sacchi N. Evidence of epigenetic changes affecting the chromatin state of the retinoic acid receptor beta2 promoter in breast cancer cells. *Oncogene*. 19(12):1556-63, 2000.
 6. Evron E, Umbricht CB, Korz D, Raman V, Loeb DM, Niranjana B, Buluwela L, Weitzman SA, Marks J, Sukumar S. Loss of Cyclin D2 expression in the majority of breast cancers is associated with promoter hypermethylation. *Cancer Res*. 61(6):2782-7, 2001.
 7. Raman V, Martensen SA, Reisman D, Evron E, Odenwald WF, Jaffee E, Marks J, Sukumar S. Compromised HOXA5 function can limit p53 expression in human breast tumours. *Nature*. 405(6789):974-8, 2000.
 8. Evron E, Dooley WC, Umbricht CB, Rosenthal D, Sacchi N, Gabrielson E, Soito AB, Hung DT, Ljung B, Davidson NE, Sukumar S. Detection of breast cancer cells in ductal lavage fluid by methylation-specific PCR. *Lancet*. 357(9265):1335-6, 2001.
 9. Burbee DG, Forgacs E, Zochbauer-Muller S, Shivakumar L, Fong K, Gao B, Randle D, Kondo M, Virmani A, Bader S, Sekido Y, Latif F, Milchgrub S, Toyooka S, Gazdar AF, Lerman MI, Zbarovsky E, White M, Minna JD. Epigenetic inactivation of RASSF1A in lung and breast cancers and malignant phenotype suppression. *J Natl Cancer Inst*. 93(9):691-9, 2001.
 10. Dammann R, Yang G, Pfeifer GP. Hypermethylation of the CpG island of Ras association domain family 1A (RASSF1A), a putative tumor suppressor gene from the 3p21.3 locus, occurs in a large percentage of human breast cancers. *Cancer Res*. 61(7):3105-9, 2001.
 11. Fackler MJ, Mc Veigh M, Evron E, Mehrotra J, Sukumar S, Argani P. Methylation profiling of early breast cancer (manuscript submitted to *Cancer Res.*), May 2002.
 12. Krop IE, Sgroi D, Porter DA, Lunetta KL, LeVangie R, Seth P, Kaelin CM, Rhei E, Bosenberg M, Schnitt S, Marks JR, Pagon Z, Belina D, Razumovic J, Polyak K.

HIN-1, a putative cytokine highly expressed in normal but not cancerous mammary epithelial cells. Proc Natl Acad Sci U S A. 98(17):9796-801, 2001.

13. Li B, Goyal J, Dhar S, Dimri G, Evron E, Sukumar S, Wazer DE, Band V. CpG methylation as a basis for breast tumor-specific loss of NES1/kallikrein 10 expression. Cancer Res. 61(21):8014-21, 2001.
14. Trinh BN, Long TI, and Laird PW. DNA methylation analysis by methylight technology. Methods 2001;25: 456-462.

APPENDICES:

None.

BIOGRAPHICAL SKETCH

Provide the following information for the key personnel in the order listed for Form Page 2.
Follow the sample format for each person. **DO NOT EXCEED FOUR PAGES.**

NAME		POSITION TITLE	
Saraswati Sukumar, Ph.D.		Professor of Oncology/Pathology	
EDUCATION/TRAINING (Begin with baccalaureate or other initial professional education, such as nursing, and include postdoctoral training.)			
INSTITUTION AND LOCATION	DEGREE (if applicable)	YEAR(s)	FIELD OF STUDY
Nagpur University, Nagpur, India	M.S.	1969	Biochemistry
Atomic Energy Commission at Cancer Institute, Madras, India	Research Fellow	1971-76	Microbiology
Nagpur University, Nagpur, India	Ph.D.	1977	Biochemistry
National Cancer Institute, NIH, Bethesda, MD	Postdoc. Fellow	1978-83	Immunology, Molecular Biology

A. Position and Honors

- 1976-78 Assistant Research Officer, in charge of Tumor Biology Section, Indian Council of Research in Indian Medicine, Madras, India.
- 1978-83 Visiting Associate, Laboratory of Immunobiology, National Cancer Institute, Bethesda, MD (Section Chief, B.Zbar)
- 1983-88 Scientist Associate, NCI and Bionetics Research Inc., NCI/Frederick Cancer Research Facility, Frederick, MD (Section Chief, Mariano Barbacid)
- 1988-89 Senior Research Associate, Dulbecco Laboratory, The Salk Institute for Biological Studies LaJolla, CA
- 1989-94 Assistant Professor, Molecular Biology of Breast Cancer Laboratory, The Salk Institute for Biological Studies, LaJolla, CA
- 1994- Associate Professor of Oncology and Director of Basic Research, Breast Cancer Program, The Johns Hopkins University School of Medicine, Baltimore, MD
- 1996-02 Associate Professor of Pathology, The Johns Hopkins University School of Medicine, Baltimore, MD
- 2002- Professor of Oncology and Pathology, Director of Basic Research; Breast Cancer Program, The Johns Hopkins University School of Medicine, Baltimore, MD
- Scientific Counselor, National Institute of Environmental Health Sciences, Research Triangle Park, NC, 1991-94
- Member of the Board of Governors, International Association for Breast Cancer Research, 1991-94
- Member, American Cancer Society Grant Review Committee, 1992-1998

B. Selected peer-reviewed publications (out of 65)

- Sukumar S, Notario V, Martin-Zanca D, Barbacid M: Induction of mammary carcinomas in rats by nitroso-methylurea involves the malignant activation of the H-ras-1-locus by single point mutations. *Nature* 306:658, 1983.
- Sukumar S, Pulciani S, Zbar B, Barbacid M: A transforming ras gene in tumorigenic guinea pig cell lines initiated by diverse chemical carcinogens. *Science* 223:1197, 1984.
- Zarbl H, Sukumar S, Arthur AV, Martin-Zanca D, Barbacid M: Direct mutagenesis of the Ha- ras-1 oncogenes by N-nitroso-N-methylurea during initiation of mammary carcinogenesis in rats. *Nature* 315: 382-385, 1995.
- Sukumar S, Perantoni A, Reed C, Rice JM, Wenk ML: Activated K-ras and N-ras oncogenes in primary renal mesenchymal tumors induced in F344 rats by methyl (methoxymethyl) nitrosamine. *Mol Cell Biol* 6:2716, 1986.
- Dandekar A, Sukumar S, Zarbl H, Young LJT, Cardiff RD: Specific activation of the cellular Harvey- ras oncogene in dimethyl benzanthracene-induced mouse mammary tumors. *Mol Cell Biol* 6:4104, 1986.
- Sukumar S, Carney W, Barbacid M: Independent molecular pathways are involved in the initiation and loss of hormone responsiveness of breast-carcinomas. *Science* 240:524, 1988.
- Miyamoto S, Sukumar S, Guzman R, Osborn RC, Nandi S: Transforming c-K-ras mutation is a preneoplastic event in mouse mammary carcinogenesis induced in vitro by N-methyl-N-introsourea. *Mol Cell Biol*;10:1593, 1990
- Sukumar S, Barbacid M: Specific patterns of oncogene activation in transplacentally-induced tumors. *Proc Natl Acad. Sci U S A* 87:718, 1990.

- Kumar R, Sukumar S, Barbacid M: Activation of ras oncogenes precedes the onset of neoplasia. *Science* 248:1101,1990.
- Sukumar S, Barbacid M: Specific patterns of oncogene activation in transplacentally-induced tumors. *Proc Natl Acad Sci U S A* 87:718, 1990.
- Kumar R, Medina E, Sukumar S: Activation of H-ras oncogenes in preneoplastic mouse mammary tissues. *Oncogene* 5:1271, 1990.
- Sharma PM, Yang X, Bowman M, Roberts V, Sukumar S: Molecular cloning of rat Wilms' tumor cDNA and a study of the mRNA expression in the urogenital system and the brain. *Cancer Res* 52:6407,, 1992.
- Sharma PM, Bowman M, Madden S, Rauscher F, Sukumar S: RNA editing in the rat Wilms' tumor susceptibility gene, WT1. *Genes Dev* 8:720, 1994.
- Glebov O, McKenzie KE, White CA, Sukumar S: Frequent p53 mutations and novel alleles in familial breast cancer. *Cancer Res* 54:3703, 1994.
- Sharma PM, Bowman M, Yu B-F, Sukumar S: A rodent model for human Wilms Tumors: Embryonal kidney neoplasms induced by N-Nitroso N-Methylurea *Proc Natl Acad Sci U S A* 99:9931, 1994.
- Umbricht CB, Saji M, Westra W, Udelsman R, Zeiger M, Sukumar S: Telomerase activity: a marker to distinguish follicular thyroid adenoma from carcinoma. *Cancer Res* 57:2144, 1997.
- Varon D, Cheng J, Hedican C, Dome JS, Umbricht CB, Thompson HJ, Sukumar S: Telomerase activity in normal and neoplastic rat mammary gland. *Cancer Res* 57:5605, 1997.
- Umbricht CB, Sherman ME, Dome J, Carey LA, Hedican CA, Kim N, Sukumar S: Telomerase activity in DCIS associated with invasive breast cancer. *Oncogene* 18:3407, 1999.
- Carey LA, Kim NW, Goodman S, Marks J, Henderson SG, Umbricht CB, Dome JS, Dooley W, Amshey SR, Sukumar S: Telomerase activity and prognosis in primary breast cancers. *J Clin Onc* 17:4:1, 1999.
- Nacht M, Ferguson AT, Zhang W, Petroziello JM, Cook BP, Gao YH, Maguire S, Riley D, Coppola G, Landes,GM, Madden SL, Sukumar S: Combining SAGE and array technologies to identify genes differentially expressed in breast cancer. *Cancer Res* 59:5464, 1999.
- Ferguson AT, Evron E, Umbricht CB, Pandita TK, Chan TA, Hermeking H, Marks J, Lamber A, Futreal AP, Stampfer MR, Sukumar S: High frequency of hypermethylation at the 14-3-3 σ -locus leads to gene silencing in breast cancer. *Proc Natl Acad Sci U S A* 97:6049, 2000.
- Raman V, Martenson SA, Reisman D, Marks J, Jaffee E, Sukumar S: Compromised HOXA5 function can limit p53 expression in human breast tumours. *Nature* 405:975, 2000.
- Raman V, Tamori A, Vali M, Zeller H, Korz D, Sukumar S: HOXA5 regulates expression of the progesterone receptor. *J Biol. Chem.* 34:26551, 2000.
- Loeb DM, Evron E, Patel CB, Sharma PM, Niranjana B, Buluwela L, Weitzman SA, Korz D, Sukumar S. WT1 is expressed in primary breast tumors despite tumor-specific promoter methylation. *Cancer Res.*, 61:921, 2001.
- Evron E, Umbricht CB, Korz D, Raman V, Loeb DM, Niranjana B, Buluwela L, Weitzman SA, Marks J, S. Sukumar. Loss of cyclin D2 expression in the majority of breast cancers is associated with promoter hypermethylation. *Cancer Res.*, 61:2782, 2001.
- Evron E, Dooley WC, Umbricht CB, Rosenthal D, Sacchi N, Gabrielson E, Soito AB, Hung DT, Ljung B-M, Davidson, NE, Sukumar S. Detection of breast cancer cells in ductal lavage fluid by methylation-specific PCR. *The Lancet* 357:1335, 2001
- Umbricht CB, Evron E, Gabrielson E, Ferguson A, Marks J, Sukumar S. Hypermethylation of 14.3.3 σ (Stratifin) is an early event in breast cancer. *Oncogene* 20:3348, 2001.
- Li B, Goyal J, Dhar S, Dimri G, Evron E, Sukumar, S, Wazer DE. and Band V. CpG methylation as a basis for breast tumor-specific loss of NES1/kallikrein 10 expression. *Cancer Res.* 61:8014-8021, 2001.
- Loeb DM., Korz D., Katsnelson M, Burwell EA, Friedman AD and Sukumar, S. Cyclin E is a target for WT1 transcriptional repression. *J. Biol. Chem.*, 277:19627-19632, 2002.
- Loeb DM. and Sukumar S. The role of WT1 in oncogenesis - tumor suppressor or oncogene? *International Journal of Hematology*, 76:117-126, 2002
- Kominsky SL, Argani, P, Korz D, Evron E, Raman V, Garrett E, Rein A, Sauter G, Kallionemi O-P, Sukumar S. Loss of tight junction protein Claudin 7 correlates with histological grade in both ductal carcinoma in situ and invasive ductal carcinoma of the breast. *Oncogene* , 2021-2033, 2003.
- Parker BS, and Sukumar S. Distant metastasis in breast cancer: molecular mechanisms and a search for therapeutic targets. *Cancer Biology and Therapy* 2:1, 14-21, 2003.
- Loeb DM, Summers JL, Burwell EA, Korz D, Friedman AD, and Sukumar S An Isoform of the Wilms' tumor suppressor gene potentiates granulocytic differentiation. *Leukemia* 17:965-971,2003.
- Chen H, and Sukumar S. The role of homeobox gene in mammary gland development and breast cancer. *J Mammary Gland Biol Neoplasia* (in press) 2003.

Parker BS, Cutts SM, Nudelman A, Raphaeli A, Phillips DR, Sukumar S. Mitoxantrone mediates demethylation and reexpression of estrogen receptor and 14.3.3 s in breast cancer cells. *Cancer Biol. Therapy* (on line, and in press) June/July 2003.

Fackler, MJ, Evron E, Khan SA, Sukumar S. Novel agents for chemoprevention, screening methods and sampling issues. *J Mammary Gland Biol Neoplasia*, (in press) 2003.

Fackler, MJ, McMeigh M, Evron E, Garrett E, Mehrotra J, Polyak, Sukumar S, Argani P. DNA methylation of RASSF1A, HIN-1, RAR-beta, Cyclin D2 and twist in in situ and invasive lobular breast carcinoma. *International Journal of Cancer* (under revision, 2003).

C. Research Support

Sukumar, S.

ONGOING

P50 CA88843 – Sukumar (PI) Project 1A NIH/NCI Molecular Markers for Breast Cancer Specialized Program in Research Excellence (SPORE in Breast Cancer) The overall goal of this proposal is to identify major molecular alterations in carcinoma of the breast by microarray analysis of all stages of tumor development.	9/29/00-9/28/05 \$177,872	10%
DAMD-17-01-1-0285 - Sukumar (PI) DOD-USAMRMC Imaging the vascular and metabolic impact of claudin-7, a tight junction protein, in transgenic human breast cancer models	06/01/01-5/31/04 \$100,000	10%
SPORE in Breast Cancer – Project 3C Jaffee (PI) NIH/NCI Vaccines: A New Paradigm for Breast Cancer Prevention The overall goal of this proposal is to study vaccines and to use the information gained to design clinical trials aimed at both the treatment and prevention of breast cancer. The success of these studies may define a new paradigm for cancer prevention.	09/30/00 to 09/29/05 \$179,678	5%
SPORE in Breast Cancer – Project 1B Gabrielson (PI) NIH/NCI Molecular phenotypes of breast cancer The goal of this project is to distinguish biologically different group of ductal breast cancer from one another using gene expression profiles.	09-30-00 to 09/29/05 \$188,695	5%
DAMD-17-01-1-0286 - Sukumar (PI) DOD-USAMRMC Early detection of cancer by molecular analysis of ductal lavage fluid Five markers cyclin D2, RAR beta, Twist, RASF and HIN-1 will be evaluated in ductal cells by quantitative methylation specific PCR	6/1/01-5/31/04 \$100,000	15%
National Cancer Institute, US4 - Sukumar (PI) Partnership between Howard University and Johns Hopkins/National Cancer Institute. Comparative gene expression analysis of african american and caucasian breast cancer microarray analysis of African American and Caucasian breast cancer stratified by ER status.	3/1/01-2/28/04 \$125,000	10%
P50-CA86346-02 Bhujwala (PI) NIH <i>Multidisciplinary functional imaging of cancer</i> In vivo cellular and molecular imaging centers	7/1/03- 6/30/08	5%

Pending

SPORE Supplement – Davidson Co-PI S.Sukumar Surrogate Endpoints in Prevention Studies and Ductal Lavage	07/03 – 07/05 \$200,000
Avon Breast Cancer Crusade – NCI CA88843-AV-14P1 Avon- - NCI Progress for Patients (PFP) Awards Program	07/03 – 06/05 \$122,324
DOD – Predoctoral Traineeship Award – BC 030941 Liangfeng Han Characterization of the role of HEYL in angiogenesis and breast cancer Development	06/04 – 06/07 \$50,000
DOD – Predoctoral Traineeship Award Theresa Swift-Scalan, M.S., R.N. Epigenetic Modifiers in Breast Cancer Risk	06/04 – 06/07 \$50,000
DOD – Postdoctoral Award – BC 030470 Xinyan Wu, Postdoctoral Fellow Role of HOXA5 in Breast Cancer Metastasis	06/04 – 06/07 \$100,000
Supplement to SPORE – CA88843 (Administrative Supplement for equipment)	09/01/03-08/31/04 \$128,186
Completed in the Last 3 Years	
R01 CA48493 - Sukumar (PI) NIH/NCI Role of tumor suppressor genes in chemical carcinogenesis This project aims at determining if expression of abundant edited Wilms' tumor suppressor gene, WT1 mediates tumorigenesis.	7/1/96-6/30/01
DAMD-17-99-1-9242 - Sukumar (PI) DOD-USAMRMC Prevention of Breast Cancer by Targeted Disruption of Breast Epithelial Cells. The goal of this project is to determine chemical ablation of the mammary epithelium can prevent breast cancer. The hypothesis will be tested using TGF α -PE toxin in a rat mammary tumor model.	9/1/99-8/31/02
P20-CA86346-02 Bhujwalla (PI) NIH <i>Multidisciplinary functional imaging of cancer</i> Planning grants: In vivo cellular and molecular imaging centers	7/1/01- 6/30/02
Susan G. Komen Breast Cancer Foundation-Sukumar (PI) SGKF - BCTR-2000-577 Early Detection of Breast Cancer by Molecular Assessment of Ductal Lavage Fluid Three markers cyclin D, RAR- β 2 and ER will be evaluated	9/30/00-9/29/02
BCRF – Davidson (PI) Breast Cancer Research Foundation To support pre-clinical studies in breast cancer research at Johns Hopkins	10/01/01-09/30/02