

**A Spectrum-Matching and Look-up-table Approach
to Interpretation of Hyperspectral Remote-sensing Data**

Curtis D. Mobley

Sequoia Scientific, Inc.
2700 Richards Road, Suite 107
Bellevue, WA 98005

FINAL REPORT

Prepared for the
Office of Naval Research
under
Contract No. N00014-00-D-0161/0001

January 2004

SEQUOIA

20040123 059

REPORT DOCUMENTATION PAGEForm Approved
OMB No. 074-0188

Public reporting burden for this collection of information is estimated to average 1 hour per response, including the time for reviewing instructions, searching existing data sources, gathering and maintaining the data needed, and completing and reviewing this collection of information. Send comments regarding this burden estimate or any other aspect of this collection of information, including suggestions for reducing this burden to Washington Headquarters Services, Directorate for Information Operations and Reports, 1215 Jefferson Davis Highway, Suite 1204, Arlington, VA 22202-4302, and to the Office of Management and Budget, Paperwork Reduction Project (0704-0188), Washington, DC 20503

1. AGENCY USE ONLY (Leave blank)		2. REPORT DATE January 2004	3. REPORT TYPE AND DATES COVERED Final Report, Nov 2000 to Nov 2003	
4. TITLE AND SUBTITLE A Spectrum-Matching and Look-up-table Approach to Interpretation of Hyperspectral Remote-sensing Data			5. FUNDING NUMBERS N00014-00-D-0161/0001	
6. AUTHOR(S) Curtis D. Mobley				
7. PERFORMING ORGANIZATION NAME(S) AND ADDRESS(ES) Sequoia Scientific, Inc. 2700 Richards Road, Suite 107 Bellevue, WA 98005			8. PERFORMING ORGANIZATION REPORT NUMBER Final Report-Project 48 Contract Item 0002	
9. SPONSORING / MONITORING AGENCY NAME(S) AND ADDRESS(ES) Environmental Optics Program, Code 322OP Office of Naval Research 800 North Quincy Street Arlington, VA 22217-5000 Attn: Dr. Steven Ackleson			10. SPONSORING / MONITORING AGENCY REPORT NUMBER	
11. SUPPLEMENTARY NOTES				
12a. DISTRIBUTION / AVAILABILITY STATEMENT Unlimited			12b. DISTRIBUTION CODE	
13. ABSTRACT (Maximum 200 Words) A spectrum-matching and look-up-table (LUT) methodology has been developed and evaluated for extracting environmental information from remotely sensed hyperspectral imagery. The LUT methodology works as follows. First, a database of remote-sensing reflectance (R_{rs}) spectra corresponding to various water depths, bottom reflectance spectra, and water-column inherent optical properties (IOPs) is constructed using a special version of the Hydrolight radiative transfer numerical model. Second, the R_{rs} spectrum for a particular image pixel is compared with each spectrum in the database and the closest match to the image spectrum is found using a least-squares minimization. The environmental conditions in nature are then assumed to be the same as the input conditions that generated the closest-matching Hydrolight-generated spectrum in the database. The LUT methodology has been evaluated by application to an Ocean PHILLS (Portable Hyperspectral Imaging Low-Light Spectrometer) image acquired near Lee Stocking Island, Bahamas, on 17 May 2000. The LUT-retrieved bottom depths were on average within 5% and 0.5 m of independently obtained acoustic depths. The LUT-retrieved bottom classification was in qualitative agreement with diver and video spot classification of bottom types, and the LUT-retrieved IOPs were consistent with IOPs measured at nearby times and locations.				
14. SUBJECT TERMS look-up-table, LUT, hyperspectral, remote sensing, Hydrolight			15. NUMBER OF PAGES 43	
			16. PRICE CODE	
17. SECURITY CLASSIFICATION OF REPORT UNCLASSIFIED	18. SECURITY CLASSIFICATION OF THIS PAGE UNCLASSIFIED	19. SECURITY CLASSIFICATION OF ABSTRACT UNCLASSIFIED	20. LIMITATION OF ABSTRACT Unlimited	

**A Spectrum-Matching and Look-up-table Approach
to Interpretation of Hyperspectral Remote-sensing Data**

Curtis D. Mobley

Sequoia Scientific, Inc.
2700 Richards Road, Suite 107
Bellevue, WA 98005

FINAL REPORT

Prepared for the
Office of Naval Research
under
Contract No. N00014-00-D-0161/0001

January 2004

SEQUOIA

Executive Summary

A team of investigators led by C. Mobley of Sequoia Scientific, Inc. has developed and evaluated a new methodology for extracting environmental information from remotely sensed hyperspectral imagery. In brief, this look-up-table (LUT) methodology works as follows:

First, a database of remote-sensing reflectance (R_{rs}) spectra corresponding to various water depths, bottom reflectance spectra, water-column inherent optical properties (IOPs), sky conditions, and viewing geometries is assembled. This database is constructed using the a special version of the Hydrolight radiative transfer numerical model, which provides an exact solution of the unpolarized radiative transfer equation for the given input. Each Hydrolight-generated R_{rs} spectrum in the database is tagged by indices that identify the bottom depth, bottom reflectance spectrum, water IOPs, sun zenith angle, etc. that were used as input to the Hydrolight run. At a minimum, this database should contain R_{rs} spectra generated for environmental conditions close to those occurring in nature at the time and location where the image was acquired. The database also may contain spectra corresponding to environmental conditions much different from those of the image under consideration.

Second, the R_{rs} spectrum for a particular image pixel is compared with each spectrum in the database and the closest match to the image spectrum is found using a least-squares minimization. The environmental conditions in nature are then assumed to be the same as the input conditions that generated the closest-matching Hydrolight-generated spectrum in the database. Thus, the inversion of a measured R_{rs} spectrum to obtain the corresponding environmental conditions is effected by a table look-up of the conditions corresponding to the closest-matching database spectrum.

Finally, for example, the index tag identifying which bottom reflectance spectrum was used in the closest-matching Hydrolight run can be used to identify the bottom type at that pixel, or to obtain other information such as the bottom reflectance at a particular wavelength. This process is repeated for each pixel in the image to generate corresponding maps of bottom depth, bottom type, or water-column IOPs.

The LUT methodology has been evaluated by application to a PHILLS (Portable Hyperspectral Imaging Low-Light Spectrometer) image acquired near Lee Stocking Island, Bahamas, on 17 May 2000. The LUT-retrieved bottom depths were compared with independently obtained acoustic bathymetry. On average, the LUT depths were within 5% and 0.5 m of the acoustic depths. The LUT-retrieved bottom classification was in qualitative agreement with diver and video spot classification of bottom types, although detailed bottom classification data were not available for quantitative, pixel-by-pixel comparison with the LUT retrievals. The LUT-retrieved IOPs were consistent with IOPs measured at nearby times and locations.

The detailed discussion of this work is presented here as a paper which has been prepared for submission to *Applied Optics* in January 2004.

Paper prepared for submission to *Applied Optics*

**A Spectrum-Matching and Look-up-table Approach
to Interpretation of Hyperspectral Remote-sensing Data**

Curtis D. Mobley
Lydia K. Sundman
Sequoia Scientific, Inc.
2700 Richards Road, Suite 107
Bellevue, WA 98005

Curtiss O. Davis
T. Valerie Downes
Robert A. Leathers
Marcos Montes
Naval Research Laboratory
4555 Overlook Ave. S.W.
Washington, D.C. 20375

W. Paul Bissett
David D. R. Kohler
Florida Environmental Research Institute
4807 Bayshore Blvd. Suite 101
Tampa, FL 33611

R. Pamela Reid
Eric M. Louchard
Rosenstiel School of Marine and Atmospheric Science
University of Miami
4600 Rickenbacker Causeway
Miami, FL 33149

1. Introduction

Recent years have seen much interest in the development of hyperspectral imagers and in the analysis of hyperspectral imagery of optically shallow waters. Sensors include the airborne AVIRIS (Airborne Visible and InfraRed Imaging Spectrometer), Ocean PHILLS (Ocean Portable Hyperspectral Imager for Low-Light Spectroscopy), CASI (Compact Airborne Spectrometer Imager;), AAHIS (Advanced Airborne Hyperspectral Imaging System), and HyMap (Hyperspectral Mapper) instruments, and the satellite-borne Hyperion imager

Recent applications of hyperspectral imagery have been quite varied. Hochberg and Atkinson (2000) used AAHIS imagery and Andréfouët et al., (2003) used CASI imagery for mapping and classification of benthic types into corals, algae, and sediments by fourth-derivative analysis of remotely sensed reflectance spectra. Dierssen et al., (2003) used spectral ratios derived from Ocean PHILLS imagery of shallow Bahamian waters to extract bathymetry and bottom type; Louchard et al. (2003) used spectrum matching for the same purpose on the same imagery. Sandage and Holyer (1998) used a neural network to determine bathymetry from AVIRIS imagery of Florida waters, and Melack and Gastil (2001) used AVIRIS to map phytoplankton concentrations in Mono Lake, California. In all cases, the exploitation of hyperspectral imagery for shallow waters depends on being able to extract information about water-column optical properties, bathymetry, or bottom type from remote-sensing reflectance spectra.

The remote-sensing reflectance R_{rs} is the ratio of the water-leaving radiance L_w to the incident plane irradiance E_d from the sun and background sky; both L_w and E_d are evaluated just above the sea surface. In practice, L_w must be estimated either by removing the surface-reflected radiance from the total (water-leaving plus surface-reflected) radiance measured just above the surface, or by extrapolating the upwelling radiance measured below the sea surface through the surface. Regardless of how it is obtained from field measurements, R_{rs} is uniquely determined by the water column inherent optical properties (IOPs, namely the absorbing and scattering properties of the water body), the depth and bidirectional reflectance distribution function (BRDF) of the bottom, the sun and sky radiance incident onto the sea surface, and the sea surface wave state. Given complete information about these environmental conditions, R_{rs} can be computed exactly by numerically solving the radiative transfer equation (RTE). The solution of this forward radiative transfer problem can be obtained using the Hydrolight radiative transfer software package (Sequoia Scientific, Inc.)

The extraction of environmental information from measured reflectance spectra constitutes a radiative-transfer inverse problem, which is discussed in the present paper. Inverse problems are notoriously difficult because of potential non-uniqueness problems. Although a given R_{rs} spectrum uniquely corresponds to a particular set of environmental conditions, errors in the measured R_{rs} may cause a particular R_{rs} spectrum to be associated with incorrect environmental conditions when "inverting" R_{rs} to obtain information about the environment. Thus it is often necessary to constrain

inverse problems so as to guide the inversion to the correct solution. Such constraints often take the form of simplifying assumptions about the underlying physical or mathematical problem, or of added environmental information.

We approach the inversion of R_{rs} via a spectrum-matching and look-up-table (LUT) methodology designed for the simultaneous extraction of bathymetry, bottom classification, and water-column absorption and scattering properties from hyperspectral imagery. After presenting the underlying LUT ideas, we apply our methodology to the extraction of environmental information from an Ocean PHILLS image acquired on May 17, 2000 in optically shallow waters near Lee Stocking Island (LSI), Bahamas. This area has been previously studied, so that acoustic bathymetry and diver and video observation of bottom type are available for comparison with the corresponding LUT-retrieved values. We evaluate both unconstrained and constrained forms of the LUT methodology.

2. The LUT Methodology

The basic idea underlying the LUT methodology for inverting R_{rs} is simple. First, a database of R_{rs} spectra corresponding to various water depths, bottom reflectance spectra, water-column IOPs, sky conditions, and viewing geometries is assembled. This database is constructed using the a special version of the Hydrolight radiative transfer numerical model (Sequoia Scientific, Inc.), which provides an exact solution of the unpolarized RTE for the given input. Each Hydrolight-generated R_{rs} spectrum in the database is tagged by indices that identify the bottom depth, bottom reflectance spectrum, water IOPs, sun zenith angle, etc. that were used as input to the Hydrolight run. At a minimum, this database should contain R_{rs} spectra generated for environmental conditions close to those occurring in nature at the time and location where the image was acquired. The database also may contain spectra corresponding to environmental conditions much different from those of the image under consideration.

Second, the R_{rs} spectrum for a particular image pixel is compared with each spectrum in the database and the closest match to the image spectrum is found. The environmental conditions in nature are then assumed to be the same as the input conditions that generated the closest-matching Hydrolight-generated spectrum in the database. Thus, the inversion of a measured R_{rs} spectrum to obtain the corresponding environmental conditions is effected by a table look-up of the conditions corresponding to the closest-matching database spectrum.

Finally, for example, the index tag identifying which bottom reflectance spectrum was used in the closest-matching Hydrolight run can be used to identify the bottom type at that pixel, or to obtain other information such as the bottom reflectance at a particular wavelength. This process is repeated for each pixel in the image to generate corresponding maps of bottom depth, bottom type, or water-column IOPs.

Although spectrum-matching has a venerable history, previous applications have been to easier problems or relied on ancillary data. Laboratory or terrestrial applications do not have the confounding influence of unknown water absorption and scattering obscuring the desired information. The previous oceanographic application by Louchard et al. (2003) relied on ancillary measurements of the IOPs so that the water properties could be considered known. In our unconstrained analysis mode, we make no *a priori* assumptions about the water depth, IOPs, or bottom reflectance.

The Hydrolight runs needed to generate the database are computationally expensive, but they are done only once. Searching the database to find the closest match to a given image spectrum is computationally fast, as is the table look up and generation of graphical or digital output products.

Spectrum matching is performed using a least-squares comparison of the measured image and database spectra via

$$LSQ(i) = \sum_{j=1}^J w(\lambda_j) [(\tilde{R}_{rs}(i, \lambda_j) - R_{rs}(\lambda_j))]^2, \quad (1)$$

where $\tilde{R}_{rs}(i, \lambda_j)$ is the i^{th} database spectrum at wavelength band j , $R_{rs}(\lambda_j)$ is the measured spectrum for a particular image pixel, and $w(\lambda_j)$ is a weighting function between 0 and 1 that can be used to weight the contribution of different wavelength bands (e.g., to discount wavelengths where the measured reflectance data are less accurate). The smallest value of the least-squares distance LSQ determines the closest database spectrum i to the measured spectrum.

Criterion (1) matches the spectrum magnitudes at each wavelength; the simultaneous incorporation of spectral shape information is implicit in this criterion. Other spectrum-matching criteria have been considered. For example, the Spectral Image Processing System (SIPS; Kruse, et al., 1993) minimizes the angle between the two normalized spectra in J -dimensional space, where J is the number of wavelengths. The SIPS matching criterion considers only the spectral shape; it regards two spectra that differ only by a multiplicative factor as being a perfect match. Although such a matching criterion is adequate for some applications, and must be used if only uncalibrated spectra are available, the SIPS criterion makes no use of the magnitude information available in the calibrated PHILLS spectra considered here. The LUT method uses both magnitude and spectral shape information to avoid the non-uniqueness problems that often occur when extracting oceanographic information from uncalibrated or normalized spectra.

3. Imagery and Ground Truth

Imagery

The Ocean PHILLS airborne hyperspectral imager is a pushbroom-scanning instrument. It uses a two-dimensional CCD array with 1024 cross-track pixels for spatial resolution. Light from each spatial pixel is dispersed onto the other direction of the CCD to obtain (after binning) 128 spectral channels between 400 and 1000 nm, with a nominal bandwidth of 4.6 nm. As normally flown, each spatial pixel is one to two meters square on the ground. Davis et al. (2002) give detailed descriptions of the instrument design and its spectral and radiometric calibration.

Ocean PHILLS was flown during the Coastal Benthic Optical Properties (CoBOP) field experiment in the vicinity of Lee Stocking Island (LSI), Bahamas during May 2000. The waters in the vicinity of LSI are generally less than 15 m deep, but do extend offshore to optically deep, open-ocean water. Nearshore waters are usually visually very clear and are characterized by chlorophyll concentrations of 0.1 to 0.2 mg Chl m⁻³. In shallow regions, there is often substantially more absorption at blue wavelengths than what would be expected for Case 1 waters having the same chlorophyll concentration, due to colored dissolved organic matter (CDOM) derived from benthic biota such as seagrass and coral or sediment biofilms. Scattering, however, appears to be dominated by phytoplankton except during episodic strong winds, which can resuspend sediments. The sea bed consists of carbonate sands and harder sediments, seagrass beds, and patches of both hard and soft corals. The bottom can be uniform on scales of tens of meters, or patchy on scales of less than a meter. There are often sharp dividing lines between bottoms of different types, such as between bare sand and dense seagrass beds or coral heads.

Figure 1 shows a PHILLS RGB image of the Adderly Cut area just to the northwest of LSI acquired at 0930 local (Eastern Daylight Savings) time (1330 UTM) on 17 May 2000. After geocorrection and discarding questionable pixels at the ends of the scan lines, the useable image shown here is 900 pixels from North to South and 1425 pixels from East to West. The pixel size is approximately 1.3 m, so the image shows an area of approximately 1.2 km by 1.9 km. This image contains areas of highly reflecting ooid sands, sparse to dense seagrass beds, pavements and sediments with varying degrees of biofilm and patchy turf algae or *Sargassum*, and small coral patch reefs. The deepest water is about 11 m.

The PHILLS at-sensor radiances were atmospherically corrected with Tafkaa (Montes et al., 2001; Gao et al., 2000). Atmospheric absorption was modeled using distributions of well-mixed gasses appropriate for a tropical atmosphere. The ozone content was set to 0.3 atm-cm (300 Dobson units), and the water vapor content was set to 3.5 cm of precipitable water. A maritime aerosol with a relative humidity of 90% was used; the optical properties of such an aerosol are described in Shettle and Fenn (1979). The aerosol optical depth was 0.1 at 550 nm. Tafkaa uses the wind speed to set

the reflectivity of the sea surface via the surface slope statistics; the available speeds are 2, 6, and 10 m s⁻¹. A value of 6 m s⁻¹ tended to overcorrect for atmospheric effects thereby occasionally giving negative radiances at the sea surface. Therefore a speed of 2 m s⁻¹ was used, which may have led to undercorrection, i.e., to water-leaving radiances that were too large.

Given an accurate radiometric calibration and using Tafkaa in its aerosol determination mode (i.e., aerosols are chosen based on the assumption that the water-leaving radiance at several NIR/SWIR wavelengths is 0), Tafkaa's lookup-table grid gives water-leaving radiances that are accurate to the equivalent of ± 0.003 sr⁻¹ in R_{rs} . However, the errors will increase if, for example, the true aerosol is not closely matched by the modeled aerosol, or if swells are present in the image (i.e., the true sea-surface geometry is different than the modeled slope statistics in Tafkaa). For the present image, the aerosols were input to Tafkaa rather than being determined from NIR/SWIR wavelengths. Likewise, the calibration processing was fairly involved (Leathers et al. 2002). Both of these situations may lead to larger systematic errors in the final R_{rs} .

Bathymetry

Acoustic bathymetry in the waters surrounding LSI was acquired from a small boat during 16-20 June 2001 (Louchard et al., 2003). Bathymetric measurements were recorded at a repetition rate of 0.7 Hz using a Suzuki ES2025 echo sounder, and each depth was recorded along with its time and the latitude and longitude as determined by WAAS GPS. The acoustic data were corrected to mean sea level (MSL) to account for tide differences. Extracting only the acoustic data that fell within the latitude-longitude bounds of the Adderly Cut image of Fig. 1 left 98,751 depths. The GPS latitude-longitude coordinates were converted to UTM and then to image pixel coordinates. Because of the slow boat speed and fast sample rate, a given PHILLS pixel often contained several acoustic depths. Multiple acoustic depths within any PHILLS pixel were averaged to get the depth for that pixel. The final result was 20,446 image pixels for which an acoustic depth is available. These pixels are shown by the black boat track in Fig. 2. The depth contours of Fig. 2 were generated by interpolation of the available depth values using the IDL (Research Systems, Inc.) contouring routine with smoothing by an 11-pixel boxcar filter (± 5 pixels to either side of a given pixel).

To gain some idea of the accuracy of the tide-corrected acoustic depths, we compared the depths for all pixels where east-west and north-south boat tracks crossed. In principle, the MSL depths at the crossings should be the same for both tracks, which may have been hours apart. There were 120 such crossings, including acoustic data from areas not shown in Fig. 1. The average difference in the depths at the crossing points was 0.10 m, with a standard deviation of 0.08 m. Only 10 crossing had a difference of more than 0.20 m, and the largest difference was 0.27 m. There was no correlation between the bottom depth and the difference in the depths of the crossing tracks. Thus we feel that the acoustic depths are accurate to within 0.1 to 0.2 m for depths of 2 to 12 m.

Geocorrection and GPS Errors

The PHILLS image was geocorrected by comparison of 379 ground control points (for the entire flight line seen in Fig. 17) as seen on the raw PHILLS image and on an IKONOS image, which covered the Adderly Cut area at 2 m resolution. After rubbersheeting, the rms error for these points was 3.1 m.

To gain some idea of the magnitude of the horizontal position errors due both to errors in the GPS positioning of the acoustic bathymetry and to the warping of the PHILLS image, we plotted the acoustic depths along line AB of Fig. 1 along with the magnitude of the corresponding PHILLS spectra at selected wavelengths. The result is seen in Fig. 3. Because the reflectance of the ooid sand in this shoal area is probably very uniform, it is reasonable to assume that the shallowest acoustic depth along line AB corresponds to the highest magnitude of R_{rs} . We thus associate the shallowest acoustic depth and the highest R_{rs} values as indicated by the dotted lines in the figure. There is an offset of 17 pixels between the minimum acoustic depth and the maximum R_{rs} values. For a pixel size of 1.3 m, this is a discrepancy of 22 m on the ground. This error is larger than what might be expected from the rms error of the image warping and the expected error of roughly 5 m in the GPS positioning. It is more speculative to associate other peaks in the depth profile with peaks in the R_{rs} values, but there appear to be discrepancies of order 10 pixels, i.e. of order 10 m, in associating the bathymetric data with the image data. These discrepancies represent the combined errors due to imperfect GPS positioning of the acoustic data, imperfect warping of the PHILLS image during geocorrection, and possible migration of the ooid sand shoal in the year between the PHILLS image and the acoustic survey.

There are few other points in the image for which an acoustic depth measurement can be reliably associated with the R_{rs} signal. Moreover, the geocorrection image warping is very nonlinear over the image area, so it is not possible to correct horizontal mismatches in bathymetric and image data based on only a few points. We therefore conclude that, when making pixel-by-pixel comparisons of the acoustic bathymetry with the PHILLS imagery, there may be horizontal positioning errors of roughly 10 m. The depth profile of Fig. 3 shows that a horizontal mismatch of pixels by 10 m can correspond to an error as of 1 m in the depth due to bottom slope. Thus, although the acoustic data are accurate to 0.1 or 0.2 m, the association of that data with a particular image pixel may be in error by as much as one meter, although the average error may be less.

IOPs

Absorption a and scattering b coefficients were measured using an ac-9 (WETLabs, Inc., Philomath, Oregon) over part of a tidal cycle on 21 May 2000 at a location approximately 1 km to the northwest of the Adderly Cut area (just to the upper left of Fig. 1; E. Boss, personal communication). Another ac-9 was used to measure the IOPs at just to the south of Adderly Cut on 1 June 1999 during the ebb

tide (Louchard et al, 2003, Table 2). In both cases the ac-9 data were taken at nominal wavelengths of 412, 440, 488, 510, 532, 555, 650, 676, and 715 nm, with a 20 nm bandwidth. These data are shown by the diamonds in Fig. 4, both with and without the pure water contribution. The figure also shows the a and b spectra as predicted by a bio-optical model for Case 1 water with a chlorophyll concentration of $0.2 \text{ mg Chl m}^{-3}$.

For purposes of hyperspectral data analysis, it is necessary to extrapolate and interpolate the available ac-9 data to cover the wavelength range of the hyperspectral image. We extended the ac-9 data to the 400-750 nm range, with 5 nm band widths (which we call the LUT standard wavelengths), as follows. As seen in Fig. 4(a), the ac-9 a spectra resemble CDOM absorption spectra, which are well described by an exponential function of wavelength. We therefore used the slope of the 412 and 440 nm values to define an exponential function of wavelength characteristic of CDOM absorption, which was then used to define the absorption for the LUT bands centered at 402.5 and 407.5 nm. Non-water absorption at and beyond 715 was assumed to be zero. Values at other LUT wavelengths were obtained by cubic spline interpolation of the available ac-9 values. The ac-9 scattering coefficients were extended in a similar fashion using the available bands to define a λ^{-n} functional form for extrapolation to 400 and 750 nm.

The Adderly Cut area has deep, open ocean water to the northeast and extensive shallows to the northwest and south. Strong tidal currents alternately flush the area with water from the open ocean or from the shallows. The flood tide brings in open-ocean water, which has chlorophyll concentrations near $0.2 \text{ mg Chl m}^{-3}$. As seen in Fig. 4(a), the total absorption at high tide is very close to that for Case 1 water with $0.2 \text{ mg Chl m}^{-3}$ at wavelengths of 470 nm and greater. Below 470 nm, there is additional absorption in the blue. The ebb tide drains the extensive shallow areas, which are covered by sea grass beds, corals, and ooid sands and pavements with varying degrees of biofilm. These benthic biota are a source of water-column CDOM that is unrelated to the phytoplankton concentration (Boss and Zaneveld, 2003). The ebb tide carries this CDOM-rich water from the shallows, which greatly increases the absorption at blue wavelengths. The ebb-tide water thus has a much different absorption spectrum than Case 1 water for any chlorophyll concentration. Because of the benthic CDOM, the absorption coefficient varies by over a factor of three during the tidal cycle of 21 May 2000, with the highest CDOM concentration and absorption occurring at low tide. The flood-tide water from offshore appears to retain some of this CDOM, as indicated by the additional absorption in the blue noted above. The 1 June 1999 measurement, which was made on a falling tide, is consistent with those of 21 May 2000.

Figure 4(b) shows the corresponding scattering coefficients b . The scattering coefficient for the 21 May 2000 measurements is only about 30% larger at low tide than at high tide, which indicates that the ebb and flood of the tide has a smaller effect on the particulate load in the water than on the CDOM concentration. The scattering coefficient remains close to that predicted by the Case 1 model with $0.2 \text{ mg Chl m}^{-3}$ throughout the tidal cycle. This implies that most of the scattering in the water

column is due to phytoplankton. The 1 June 99 scattering coefficients are somewhat higher indicating, perhaps, additional mineral particles in the water from resuspended sediments or detritus from benthic plants.

It thus appears that in this area the absorption coefficient is strongly coupled to the tidal cycle and is much greater at blue wavelengths than for Case 1 water with the same chlorophyll concentration. The scattering coefficient, on the other hand, is less variable, is weakly coupled to the tides, and is closer to what would be expected in Case 1 water. The time of the PHILLS image acquisition, 0930 EDST on 17 May 2000, was just after a high tide at 0847 EDST (the next low tide was at 1440). The period between image acquisition on 17 May and the nearby IOP measurements on 21 May was one of stable weather and no visually apparent changes in water conditions. Thus a reasonable *a priori* guess as to the IOPs at the time of image acquisition could be made by using one of the higher-tide IOP sets from the 21 May 2000 measurements.

We also added pure water, and spectra defined by the Case 1 IOP model in Hydrolight for chlorophyll concentrations of 0.05, 0.2, and 0.5 mg Chl m⁻³. We do not expect that these IOPs would describe the Adderly Cut waters, but their presence in the database will serve as a test of the algorithm's ability to extract the correct IOPs when others are also available. To have a wider selection of spectra in the IOP database, we also interpolated between the four ac-9 spectra measured on 17 May 2000. This gives a total of 4 sets of measured IOPs, 3 sets obtained from interpolation of measurements, and 4 sets of modeled IOPs, for a total of 11 sets of absorption and scattering spectra in the database. These *a* and *b* spectra are shown in Fig. 5. Figure 5(b) shows that the Case 1 scattering spectra vary much more in magnitude as a function of chlorophyll concentration than do the measured *b* over the course of a tidal cycle.

Bottom Classification

Bottom type in the Adderly Cut area has been classified by a combination of diver observation and video recorded from a small boat (Gonzalez and Eberli, 1997; Louchard et al., 2003). As mentioned above, the bottom includes bare oolitic sand shoals in areas swept by strong tidal currents; sands stabilized by sparse to dense beds of *Thalassia*; pavement with varying coverages of *Sargassum*, turf algae, soft corals, and sponges; and small patch reefs and isolated hard coral heads. The sediments are covered by varying degrees of biofilm. Figure 6 shows the bottom classification based on video recorded from a small boat. Visual classifications such as "sparse to medium seagrass" or "patchy *Sargassum*" do not allow for quantitative analysis in terms such as leaf area index, but they do serve for qualitative evaluation of the LUT retrievals of bottom type.

Bottom Reflectance

Spectral irradiance reflectances R_b for various bottom materials in the LSI area have been measured both in situ with diver-operated instruments (Mazel, 1997; Mazel and Fuchs, 2003) and in the laboratory on sediment cores (Stephens et al, 2003; Decho et al, 2003) and plant specimens (Drake et al., 2003) returned from the field. In many cases the measured quantities were reflectance factors that are equated to the irradiance reflectance under the assumption that the material is a Lambertian reflector.

Selected sediment and biota reflectances are shown in Fig. 7. The spectra of Fig. 7(a) show the wide range of reflectance magnitudes occurring for sediments ranging from clean ooid sand (top spectrum), through sand with varying degrees of biofilm, to pavement, grapestone and other dark, hard sediments (bottom spectrum). Figure 7(b) shows the reflectance spectra for selected biota including bleached coral (top spectrum), clean seagrass leaves (*Thalassia*), turf algae, brown seaweed (*Sargassum*), corals, and sponges. These spectra are in many cases averages of several spectra measured on different plants or on different parts of the same plant. In many cases these spectra were obtained at other locations and may or may not be representative of the biota at Adderly Cut. The spectra of Figs. 7(a) and 7(b) can be combined to obtain spectra for mixtures such as sand and seagrass, or pavement and *Sargassum*, as may be appropriate for describing particular locations in Adderly Cut. Figure 7(c) shows such reflectance mixtures for clean seagrass leaves combined with a sand substrate measured in a seagrass bed, and for mixtures of pavement and turf algae, *Sargassum*, and coral. The mixing was done at ten percent increments, i.e., 90% sand + 10% grass, 80% sand + 20% grass, etc. These mixtures are rather limited given the ranges of possible bottom reflectances found in nature. The coral reflectance used in the mixing was an average of several rather different reflectances for different coral species, and the *Sargassum* and turf algae spectra were each measurements on a single plant.

We also included three "gray" bottom reflectances with wavelength-independent reflectances of 0.2, 0.1, and 0.0 (a black bottom). Although such spectra are unnatural and would not be included in a database for operational image analyses, their presence is a test of the matching algorithm's tendency to go astray if given the chance. Including the measured endmembers, the mixtures, and the three gray spectra, there are 63 bottom reflectance spectra in the database. These are shown in Fig. 7(d).

4. Database Generation

A special version of the Hydrolight 4.2 radiative transfer model (called EcoLUT) was used to create a database of R_{rs} spectra for evaluation of the LUT methodology. The water IOPs were assumed to be homogeneous (constant with depth). Finite-depth bottoms were assumed to have Lambertian BRDFs characterized by the irradiance reflectances just discussed. Runs were made at the LUT

standard wavelengths, namely at the 70 five-nanometer wavelength bands from 400 to 750 nm. For computational efficiency, all IOPs and bottom reflectances were preprocessed to obtain values at the LUT standard wavelengths before being used as input to EcoLUT.

No backscatter data were available, from which it would be possible to determine the backscatter fraction from the backscatter coefficient and the scattering coefficient. It is likely that the phytoplankton had a backscatter fraction of 0.015 or less (Ulloa et al., 1994). However, in these clear waters, backscatter by the water itself can be a significant part of the total backscatter. Simultaneous ac-9 and HydroScat-6 (HOBILabs, Inc.) measurements in the Florida Keys, which also have optically clear, shallow water in a similar environmental setting, have shown total (particulate plus water) backscatter fractions between 0.03 and 0.04 [P. Bissett, personal communication; Looe Key data from Oct 2002]. When processing the ac-9 data, the particle backscatter fraction was assumed to be 0.02, which may be representative of the mixture of small mineral particles and phytoplankton suspended in the LSI waters. The resulting total backscatter fractions (including water backscatter) are in the range of 0.025 to 0.05, which covers the range of measurements made elsewhere in similar environments. For the database IOPs based on bio-optical models for Case 1 waters, a particle (phytoplankton) backscatter fraction of 0.005 was used. The total backscatter fraction at each wavelength was then used to generate the total scattering phase function from the Fournier-Forand family of phase functions, as described in Mobley et al. (2002).

The bottom was placed at 0.25 m increments from 0.25 to 15.0 m, for a total of 60 depths. An additional bottom option, infinitely deep water, was also included. In this case, the non-Lambertian "bottom" BRDF was computed from the water-column IOPs and no separate bottom reflectance spectrum was used.

The EcoLUT runs included Raman scatter by water. However, since the IOP input to EcoLUT was the total IOPs, not chlorophyll or CDOM concentrations, fluorescence by chlorophyll and CDOM were not included in the runs.

The LUT database thus has $N_{\text{IOP}} = 11$ sets of IOPs, $N_{\text{Rb}} = 63$ bottom reflectances, and $N_{\text{zb}} = 60$ finite bottom depths. When combined in the EcoLUT runs, these yield $N_{\text{IOP}} \times (N_{\text{Rb}} \times N_{\text{zb}} + 1) = 41,591$ R_{rs} spectra for a given sun angle, wind speed, and other external conditions. For the initial database, only one solar zenith angle was used: $\theta_s = 60$ deg, which corresponds to the sun's location at the time of the PHILLS overflight. The sky was modeled as clear with atmospheric conditions (humidity, aerosol type, etc.) typical for tropical atmospheres. Only the EcoLUT nadir-viewing radiances were used to compute R_{rs} ; there are no off-nadir viewing directions in the database. Figure 8 shows the R_{rs} spectra in the database.

5. Unconstrained Inversions

We now apply the entire EcoLUT-generated database of R_{rs} spectra to the analysis of the hyperspectral PHILLS data for the Adderly Cut area seen in Fig. 1. The 72 wavelengths in the PHILLS R_{rs} spectra in the 400-750 nm range do not correspond exactly to the 70 LUT standard wavelengths. We therefore first resampled the LUT database R_{rs} spectra via a cubic spline fit to correspond to the 72 PHILLS wavelengths.

The first matching used the entire LUT database and all available wavelengths from 400 to 750 nm, i.e., all $w(\lambda_j) = 1$ in Eq. (1). The results were disappointing. When compared to the acoustic bathymetry at the 20,446 pixels where both LUT and acoustic depths are available, the average LUT depth retrieval was 49.0% too shallow, which corresponded to the average depth being 2.56 m too shallow. The retrieval of bottom type correctly separated areas of sediment and seagrass in waters less than ~5 m deep, but large areas of deeper water were retrieved as a gray bottom. The IOPs were generally retrieved as the lower-CDOM spectra in shallow waters, but were often retrieved as higher-CDOM or even Case 1 water over the gray-bottom pixels. Thus, the deeper pixels were often retrieved as too shallow, with a gray bottom and an unlikely set of IOPs.

The reason for the poor retrievals apparently lies in the presence of systematic errors in the PHILLS R_{rs} spectra. Figure 9 shows selected PHILLS spectra chosen to illustrate a variety of bottom depths and types. The locations of points 1-5 are shown in Fig. 1 and are briefly characterized as follows: Point 1 is clean ooid sand at ~2 m (acoustic) depth; 2 is ooid sand at ~8 m; 3 is moderate to dense seagrass at ~2 m; 4 is sparse grass at ~2.5 m; 5 is biofilmed sand or pavement at ~3 m; and 6 is a deeper-water (15 m or more) offshore pixel located ~2 km to the northeast of Adderly Cut (at the upper right of Fig. 17). For our present purpose, we note that the spectra do not approach zero for wavelengths beyond 700 nm, as would be expected for bottom depths of more than a meter. Indeed, all of the database R_{rs} spectra with $z_b \geq 1$ m are essentially zero beyond 750 nm. Dierssen et al. (2003) compared data from the same PHILLS instrument at a nearby location with ground-truth R_{rs} spectra measured by a Hyper-TSRB (Satlantic, Inc.). They too concluded that the 2000 version of the PHILLS instrument gave spectra which were too high in the red, and were also too high over most of the spectrum for areas of seagrass bottoms. Kohler (2001) compared PHILLS spectra from the 1999 version of this instrument with Hyper-TSRB data and found that both an offset and a gain were necessary to bring the PHILLS spectra into agreement with the Hyper-TSRB spectra. Louchard et al. (2003) also adjusted spectra from the 1999 version of the PHILLS instrument by subtracting the difference of a deep-water PHILLS spectrum and a Hydrolight-computed spectrum for infinitely deep water from each shallow-water spectrum. If the PHILLS spectra are too large in magnitude, we could expect that the LUT depth retrieval would be too shallow because a brighter spectrum would correspond to a shallower bottom, all else being the same.

We thus hypothesize that the PHILLS spectra are systematically too large. This is consistent with

an undercorrection of atmospheric effects caused by using a 2 m s^{-1} wind speed in Tafkaa. Lacking extensive groundtruth R_{rs} data, we cannot say if the obvious offsets beyond 650 nm as seen in Fig. 9 also occur down to 400 nm or if the offset is the same for every wavelength. Nevertheless, we can attempt to correct for any systematic, wavelength-independent bias by shifting each PHILLS spectrum so that its minimum value, which is generally located somewhere beyond 650 nm, is zero. The dotted lines in Fig. 9 illustrate such shifted spectra.

We then repeated the LUT matching with each PHILLS spectrum offset to zero at its minimum value before determining the closest database match via Eq. (1). The results were much better. The average depth error over all pixels is now only 5.3%, or 0.54 m, too shallow. The deeper areas previously retrieved as grass bottoms are now generally retrieved as sea grass.

Figure 10 compares the LUT and acoustic depth retrievals as a function of the retrieved bottom type. The average percent difference in the LUT and acoustic depths is computed as

$$\text{percent difference} = \frac{100}{N} \sum_{i=1}^N \frac{z_b(\text{LUT}; i) - z_b(\text{acoustic}; i)}{z_b(\text{acoustic}; i)}, \quad (2)$$

where $z_b(\text{LUT}; i)$ is the retrieved depth at pixel i , $z_b(\text{acoustic}; i)$ is the acoustic depth, and N is the number of pixels for a given bottom type as shown in the figure. The average depth difference is computed as

$$\text{depth difference} = \frac{1}{N} \sum_{i=1}^N [z_b(\text{LUT}; i) - z_b(\text{acoustic}; i)]. \quad (3)$$

In each case, a positive (negative) error indicates that the LUT depth is too deep (shallow). Over the sediments, which are highly reflecting and well represented in the LUT database, the average error is only 1.6%, or -0.07 m. The depth error is larger, -12.6% or -0.88 m, over the darker seagrass bottoms, which give a smaller bottom contribution to R_{rs} and whose reflectances in the LUT database are a mixture of an average clean-leaf seagrass reflectance and one sediment type. Thus the bottom reflectances for seagrass and sediment mixtures are perhaps not as well represented in the LUT database as are the pure sediment bottoms. There is large scatter in the depth retrievals for mixtures of coral, *Sargassum*, and turf algae, which are likely even less well represented in the present database. The "other" category also includes the gray-bottom pixels, which are always retrieved as much too shallow. The horizontal striping in the plotted points occurs because the LUT depths are

at intervals of 0.25 m.

It is not clear in Fig. 10 that most of the points cluster near the 1:1 line at the shallower depths. Therefore Fig. 11 displays the retrieved and acoustic depths as a depth distribution of the number of pixels at each depth. We note in particular that the seagrass bottoms in the 7-9 m depth range are not well retrieved. Figure 12 shows the pixel-by-pixel depth retrievals for the entire image. Although the LUT retrieved depths are in increments of 0.25 m, we have binned the retrieved depths for convenient display. The qualitative agreement with the acoustic depth map of Fig. 2 is clear. No pixels were retrieved with a depth greater than 12 m, which is correct for this area. Figure 13 compares the acoustic and LUT depths along transect AB shown in Fig. 12. We see that there is considerable pixel-to-pixel variability, but that the overall retrieval is fairly good. Moreover, we note that the average error and standard deviation between the LUT and acoustic depths are comparable to the differences that can be expected owing to GPS and geocorrection errors, as discussed above.

Figure 14 shows the pixel-by-pixel retrieved bottom type. The color-coded classification scheme is defined as follows. A pixel is flagged as "sand" if the retrieved bottom reflectance is any of the seven database spectra for clean ooid sand to heavily biofilmed sand. These are the upper seven R_b spectra in Fig. 7(a). "Darker sediment" corresponds to bottom reflectances for any of the four lower-reflectance spectra for hardpan, grapestone, or pavement. "Thick grass" refers to a pixel whose retrieved bottom spectrum was either the pure sea grass spectrum or a mixture of sand and grass with 60% or more grass spectrum; "sparse grass" is a grass-sand mixture with 10-50% grass. "Turf on pavement" flags pixels whose bottom reflectances correspond to any mixture (10-100%) of the turf algae spectrum with the pavement spectrum; the same definition is used for "Sargassum on pavement" and "coral on pavement." "Pure biota" refers to a pixel retrieved as having a reflectance spectrum for one of the seven corals and sponges in the database. Finally, "gray" refers to bottoms with a reflectance of $R_b = 0.0, 0.1, \text{ or } 0.2$ at all wavelengths. It should be remembered that our category of "thick grass," for example, is based on a large contribution by the pure grass spectrum to the total bottom reflectance. This may or may not correspond to a "thick grass" classification by some other scheme such as leaf area index.

With this qualitative bottom classification scheme, we see from Figs. 14 and 6 that the LUT retrieval has done a reasonably good job of classifying areas of sediments, and dense and sparse sea grass. The LUT retrieval is also consistent with an intuitive interpretation of Fig. 1. There appears to be some mis-identification of sea grass vs. turf or *Sargassum*, but this is not surprising because these reflectance spectra are dark and somewhat similar (especially for turf algae vs. *Sargassum*). Very few pixels are retrieved as pure biota. The curved band of turf/*Sargassum* at x pixels ~400-850 and y pixels ~850 parallels the edge of the image and is not correlated with any physical feature. Note a similar band in the IOP data of Figs. 15 and 20, which extends beyond the Adderly Cut area. This indicates that these retrievals are influenced by artifacts in the PHILLS image.

Figure 15 shows the IOP retrievals color coded as to which set of IOPs was retrieved. The water IOPs will have the least influence on R_{rs} where the bottom is brightest and shallowest, such as over the center of the ooid shoal or very near shore. The IOPs will have the greatest influence on R_{rs} where the bottom is darkest and deepest, such as over seagrass beds or the deeper parts of the ooid shoal. Thus the IOP retrievals are likely to be more trustworthy over the deeper and vegetated areas. These areas of Fig. 15 are predominately retrieved as IOP sets 2, 3 or 4, which correspond to the lower-to-moderate CDOM waters that we would expect to occur just after high tide. The shallow center of the ooid shoal is retrieved as IOP set 1, which had the lowest CDOM concentration. We tend to discount the accuracy of this retrieval because of the shallow, bright bottom. The deeper areas of the ooid shoal are retrieved as IOP set 2 or 3, consistent with the retrievals over the adjacent darker bottoms. The shallow near-shore regions are often retrieved as high-CDOM water. This is indeed where benthic vegetation and sediment biofilms could significantly increase the CDOM concentration during the previous slack water at high tide, and where the currents are weakest and may not have mixed the waters with those of the central part of the area as the tide begins to ebb. However, those high-CDOM retrievals also may be incorrect IOP retrievals resulting from inadequate representation of the corresponding bottom reflectances in the database. The sensor signal to noise ratio is lowest and the calibration is most difficult at blue wavelengths, which may also affect the IOP retrievals because of the strong influence of CDOM absorption near 400 nm. Although it is not possible to decide which IOP retrievals are correct or incorrect in the absence of IOP ground truth measurements taken at the time of the PHILLS overflight, the IOP retrievals are nevertheless plausible. It is reassuring that the only pixels retrieved as Case 1 water were at the very shallowest part of the ooid shoal.

These results indicate that the poor initial matching results were indeed due in large part to a systematic error in the PHILLS spectra for this image. We will henceforth offset each PHILLS spectrum to zero before performing the matching.

6. Constrained Inversions

We next investigate whether the matching results can be improved by constraining the inversion. We can do this by restricting the allowed depths, bottom reflectances, or IOPs in the LUT database, or by performing the matching over a restricted wavelength interval. In all cases, it is best to be guided by the data, starting with an unconstrained inversion.

The three gray-bottom reflectance spectra were included in the initial database just to see if they ever occurred in the matching results. They seldom occur with the offset PHILLS spectra and, in any case, they are unnatural. Likewise, the IOP sets for pure water and Case 1 water with chlorophyll concentrations of 0.05, 0.2, and 0.5 mg Chl m^{-1} were included in the database to see if they would be chosen, even though we did not expect that the Adderly Cut waters would be described by these

IOPs. It was again reassuring that the matching almost never returned one of these IOP sets. Because neither the gray bottoms nor the Case 1 IOPs are found to provide frequent best matches for this image, the corresponding R_{rs} spectra can be omitted from the database. This gives a constrained database with 7 IOPs and 60 R_b spectra, for a total of 25,207 R_{rs} spectra. Searching a smaller LUT database will also decrease the computer time required to process an image.

The average depth error obtained with the constrained database is 4.7%, or 0.49 m, too shallow. The various plots are visually quite similar to Figs. 10-15. Now, however, the points of Fig. 10(c) lie nearer to the 1:1 line because there are no gray-bottom pixels. However, excluding the gray bottoms and Case 1 IOPs does not greatly improve the average retrievals because so few pixels were previously being matched with these now-excluded values.

If we now assume that the IOP retrievals over the deeper, darker bottom regions are most likely to be correct over the entire image area, then we might improve the depth and bottom classification retrievals by reprocessing the image using only the IOPs for this retrieved range of likely values. We thus further constrained the R_{rs} database to include spectra corresponding only to IOP sets 2, 3, and 4. This does indeed slightly improve the depth retrievals: the average error decreases from -4.7% and -0.49 m to -2.2% and -0.38 m. This is a noticeable quantitative improvement, but the depth plots corresponding to Figs. 10-13 are visually similar to those already seen.

The regions previously retrieved as IOP set 1 are now retrieved as set 2, which is the nearest allowed IOP set. Likewise, areas previously retrieved as high-CDOM IOPs are now retrieved as IOP set 4. Although constraining the IOPs did not greatly influence the depth retrievals, the shallow near-shore areas previously retrieved as high-CDOM IOPs and a mixtures of seagrass, and *Sargassum*, or turf algae are now more often retrieved as *Sargassum* or turf algae, as seen in Fig. 16. It is not possible to say quantitatively if these changes in the bottom type retrievals are correct or not. However, visual comparison of Figs. 6 and 16 is good.

When the IOPs are constrained to sets 2-4, most of the pixels are retrieved as IOP 4, except over the shallower parts of the ooid shoal. Therefore, if we assume that the entire water body is homogeneous, we can further constrain the inversion by allowing only IOP4 in the matching. This gives almost no change in the depth or bottom type retrievals, since most pixels were already being retrieved as IOP set 4. In any case, constraining the dataset this much is hard to justify given our limited knowledge about the IOPs at the time of the PHILLS overflight.

We can also constrain the inversion by performing the matching using a restricted wavelength range. Since the PHILLS R_{rs} spectra appear somewhat noisy at wavelengths greater than about 600 nm, we performed the matching using only 400 to 600 nm. In all cases—unconstrained, or any of the constrained inversions discussed above—restricting the wavelength range degraded the depth retrievals. For example, for the constrained inversion with 60 bottoms and 7 IOPs, the 400-750 nm

inversion gave an average depth error of -4.7% or -0.49 m, whereas the 400-600 nm inversion gave errors of -10.1% and -0.67 m. This indicates that the wavelengths beyond 600 nm are contributing useful information, presumably at the shallowest depths where the bottom reflectance contributes to R_{rs} in spite of the high absorption by water itself.

Finally, we performed the inversion using spatially filtered PHILLS spectra. The PHILLS image was reprocessed so that the R_{rs} spectrum at each pixel was averaged with the eight surrounding spectra in a 3x3 block centered on the given pixel (except at the edges of the image, where fewer spectra were averaged). This averaging gives a very slight fuzziness to the visual appearance of Fig. 1. The smoothed image, i.e., the spatially averaged PHILLS R_{rs} , was reanalyzed using the constrained dataset with 60 bottoms, IOPs 2-4, and all wavelengths from 400 to 750 nm. The smoothing does reduce the pixel-to-pixel variability in the depth retrievals somewhat, as seen in Fig. 13, and the average depth error is only -1.0% and -0.25 m, compared to -2.2% and -0.38 m for the same inversion applied to the unsmoothed image. The map of retrieved bottom type is very similar to those already seen.

7. Additional Retrievals

Based on the above quantitative comparisons of the Adderly Cut depth retrievals with the acoustic bathymetry, and on the qualitative agreement for bottom type and expected water IOPs, we are confident that the LUT methodology provides useful inversions of hyperspectral R_{rs} data. The present LUT database appears to be adequate for analysis of the waters around LSI. We therefore now extend the analysis to the entire PHILLS flight line, which is seen in Fig. 17.

The Adderly Cut area studied above is at the center of this image. At the left end of the image, west of Norman's Pond Cay, the water is less than 4 m deep and the nearly level bottom is generally pavement or grapestone, which can be bare or sparsely covered with seagrass or other vegetation. At the east end of the image, north of LSI, the water becomes progressively deeper. The deepest waters at the upper right corner of this image have depths of 15 m or more, but are not yet optically deep (i.e., the bottom still influences R_{rs}).

A LUT inversion of this dataset was performed using the constrained database with 60 bottoms, IOPs 1-7, and all wavelengths. Figure 18 shows the depth retrievals. We see that at the upper right of the figure the depth is retrieved as 12-15 m, which is correct. Some of that area may be deeper than 15 m, but the present LUT database does not have depths greater than 15 m, except for the infinite depth case. Thus the closest matching spectra are those for 15 m; the infinite-depth spectra were never chosen. At the left end of the plot, the depths are correctly retrieved as being less than 4 m.

The previous plots of bottom type have used the retrieved bottom index to classify the bottom type

according to a convenient *ad hoc* scheme. However, one of the advantages of the LUT inversion methodology is that the bottom index labels an entire reflectance spectrum. Thus we have spectral information available, which can be presented or used in various ways. If, for example, the LUT-retrieved bottom information were being used to predict the performance of a bathymetric LIDAR, the quantity of interest might be the reflectance of the bottom at the LIDAR wavelength, not the type of bottom material. In this case a map of bottom reflectance, rather than bottom type, can be displayed. Figure 19 illustrates this LUT capability via a map of retrieved bottom reflectance at 488 nm. We see that the darker graptone and pavement sediments west of Norman's Pond Cay (at the left end of Fig. 17) have a bottom reflectance similar to that of the areas covered by sparse vegetation on a sand substrate, as seen in the Adderly Cut area. Only the areas covered by dense vegetation have reflectances less than 10%, and only the ooid shoal and a few beach areas have reflectances greater than 40%.

Likewise, the retrieved IOPs have full spectral information on the total absorption, scattering, and backscatter coefficients that were used to generate the LUT database. The ratio of $a(412 \text{ nm})$ to $a(443 \text{ nm})$ is sometimes used to separate Case 2 waters with high concentrations of CDOM from Case 1 waters with the same chlorophyll concentration. Such information is available from the LUT retrievals. Thus, rather than plot the index of the IOP set as was done above, Fig. 20 shows a plot of the retrieved $a(412)/a(443)$ ratio. As expected, the furthest offshore (at the upper right of Fig. 17) have the lowest value of this ratio, i.e., the lowest CDOM concentration. As previously discussed, the low ratio values over the ooid shoal are likely an incorrect retrieval due to the shallow, bright bottom. For comparison, the Case 1 waters in the full LUT database have an $a(412)/a(443)$ ratio of less than one; pure water has $a(412)/a(443) = 0.66$.

8. Conclusions

We have developed a very general spectrum-matching and look-up-table (LUT) methodology for inversion of hyperspectral ocean-color remote-sensing data. The present methodology requires no ancillary environmental information and is able simultaneously to retrieve bathymetry, bottom classification, and IOPs. It is therefore a significant improvement over previous spectrum-matching algorithms.

We evaluated our methodology by application to a PHILLS image taken near Lee Stocking Island, Bahamas. The associated database of R_{rs} spectra was constructed using Hydrolight and the available, but limited, information on bottom reflectances and water IOPs in this area. Additional gray bottom reflectances and IOPs for Case 1 water were included in the database to evaluate whether the LUT inversions would be led astray by the presence of spectra representing unnatural (the gray bottoms) or unlikely (the Case 1 IOPs) conditions. The LUT retrievals were validated using acoustic bathymetry and diver- and video-generated maps of bottom type.

The success of the LUT methodology depends upon two requirements. First, the image R_{rs} spectra must be accurately calibrated. This is a difficult but achievable goal given recent advances in hyperspectral imaging and atmospheric correction algorithms. Poorly calibrated or relative R_{rs} spectra are not sufficient for accurate extraction of quantitative environmental information. It is indeed the use of accurately calibrated R_{rs} spectra that avoids the non-uniqueness problems that often occur with uncalibrated spectra. Second, the database R_{rs} spectra used to match the image spectra must include spectra that describe the depth, bottom reflectance, and water IOPs found within the image. The database spectra can be obtained from models, as was done here, or from well characterized field measurements. The presence of non-representative R_{rs} spectra, which perhaps describe other locations, increases the computer time required for image processing but does not degrade the retrieval.

The available PHILLS R_{rs} spectra appear to be systematically too large at red and longer wavelengths (Fig. 9). Indirect evidence (based on the accuracy of the LUT retrievals before and after correction of the PHILLS spectra) indicates that the offset extends to shorter wavelengths. This is also consistent with previous comparisons of PHILLS spectra with ground truth measurements made over shallow seagrass beds. We therefore attempted an approximate correction for this offset by shifting each PHILLS spectrum to zero at its smallest value, which usually occurs somewhere beyond 650 nm.

The LUT methodology (applied to the corrected PHILLS spectra) yields environmental information about bathymetry, bottom classification, and water-column IOPs that is consistent with the available ground truth. When applied in its unconstrained form, i.e., including all database R_{rs} spectra and wavelengths as candidates for matching the PHILLS spectra, the LUT depth retrievals were on average about five percent or one-half meter too shallow when compared on a pixel-by-pixel basis with the available acoustic bathymetry. This is comparable to the possible differences between the LUT and acoustic bathymetry due to GPS errors and imperfect geocorrection of the PHILLS image (Fig. 3). However, the LUT depth retrievals do appear to be systematically too shallow by one meter or more at some of the deeper locations (compare Figs. 2 and 12, or Fig. 13). The retrieved bottom type is consistent with the qualitative ground truth map of bottom type. The retrieved IOPs are consistent with what would be expected in this area, based on nearby IOP measurements taken at other times. Very few pixels were matched with either a gray bottom or Case 1 IOPs (see Fig. 14), which reassuringly indicates that the spectrum matching algorithm correctly selects the spectra for a given environment even in the presence of unrepresentative environmental conditions in the database.

Several constrained inversions were also performed. When the un-natural gray bottoms and Case 1 IOPs were eliminated from the database, the resulting depth errors decreased only slightly because the unconstrained inversion was seldom being led astray. Further constraints based on allowing only the most likely IOPs to be used in matching again gave slight increases in the accuracy of the depth

retrievals. The constrained inversions gave a somewhat different map of bottom type, with seagrass-sand mixtures often being replaced by mixtures of *Sargassum* or turf algae with pavement (compare Figs. 14 and 16). The available ground truth is not adequate for pixel-by-pixel quantitative evaluation of these retrievals, but the retrieved maps of bottom type are in all cases visually similar to the diver- and video-generated maps.

There is noticeable pixel-to-pixel variability in the retrieved bottom depths (Fig. 13). This variability decreased somewhat in the constrained inversions or when the PHILLS pixels were spatially averaged over 3x3 blocks of pixels, but in any case the variability does not obscure the overall depth retrieval.

The errors in the average depth retrieval increased somewhat when the spectrum matching was performed using only wavelengths between 400 and 600 nm. This indicates that the wavelengths from 600 to 750 nm were indeed contributing useful information to the inversion and should be retained, especially when analyzing images with very shallow waters.

The success of the LUT methodology in this initial evaluation gives us reason to believe that it will prove to be a very general and robust way of extracting environmental information from hyperspectral oceanographic imagery. Further improvements in the retrievals can be anticipated as additional bottom reflectance spectra and water IOPs are added to the existing database. Improved retrievals of selected information will likely be possible whenever ancillary information is available to constrain the inversions. Thus, for example, if IOP measurements are available at the time of the overflight, only those IOPs would be allowed in the spectrum matching, and the resulting retrievals of depth and bottom type likely would improve. Similarly, if bathymetric data were available, obtained either from charts or perhaps from a combined hyperspectral-LIDAR imaging system, then the depths would be known *a priori* at each pixel, and the inversion would need to find only the bottom reflectance and water IOPs.

Finally, we note that the computer time required for image processing is not limiting. In the present analysis, every PHILLS spectrum was compared with every database spectrum. The unconstrained inversion of the Adderly Cut image required a few hours of time on a PC; less time was required for the constrained inversions. Analyzing the full flight line required an overnight run. Thus it is reasonable that, when applied in an operational mode, maps of bathymetry, bottom classification, and water-column IOPs can be in the user's hands within 24 hours of the PHILLS overflight. Further order-of-magnitude decreases in run time can certainly be achieved by streamlining the present computer code.

Acknowledgements

This work was supported by the Environmental Optics Program of the U. S. Office of Naval Research under contract N00014-00-D-0161/0001 to C.D.M. Collaborators W. P. Bissett and C. O. Davis were separately funded. The ac-9 data were provided by E. Boss and J. R. V. Zaneveld. C. H. Mazel, C. Stephens, and R. Zimmerman all provided bottom reflectance spectra from the LSI area.

References

- Andréfouët, S., C. Payri, E. J. Hochberg, L. M. Che, M. J. Atkinson, 2003. Airborne hyperspectral detection of microbial mat pigmentation in Rangiroa atoll (French Polynesia). *Limnol. Oceanogr.* 48(1, part 1), 426-430.
- Boss, E. and J. R. V. Zaneveld, 2003. The effect of bottom substrate on inherent optical properties: Evidence of biogeochemical processes. *Limnol. Oceanogr.* 48(1, part 1), 346-354.
- Davis, C. O., J. Bowles, R. A. Leathers, D. Korwan, T. V. Downes, W. A. Snyder, W. J. Rhea, W. Chen, J. Fisher, W. P. Bissett, and R. A. Reisse, 2002. Ocean PHILLS hyperspectral imager: design, characterization, and calibration. *Optics Express*, 10(4), 210-221.
- Decho, A. W., T. Kawaguchi, M. A. Allison, E. M. Louchard, R. P. Reid, F. C. Stephens, K. J. Voss, R. A. Wheatcroft, and B. B. Taylor, 2003. Sediment properties influencing upwelling spectral reflectance signatures: The "biofilm gel effect." *Limnol. Oceanogr.* 48(1, part 1), 431-443.
- Dietersen, H. M., R. C. Zimmerman, R. A. Leathers, T. V. Downes, and C. O. Davis, 2003. Ocean color remote sensing of seagrass and bathymetry in the Bahamas Banks by high-resolution airborne imagery. *Limnol. Oceanogr.*, 48(1, part 2), 444-455.
- Drake, L. A., F. C. Dobbs, and R. C. Zimmerman, 2003. Effects of epiphyte load on optical properties and photosynthetic potential of the seagrasses *Thalassia testudinum* Banks ex König and *Zostera marina* L. *Limnol. Oceanogr.* 48(1, part 1), 456-463.
- Gao, B.-C., M. J. Montes, Z. Ahmad, and C.O. Davis, 2000. An Atmospheric Correction Algorithm for Hyperspectral Remote Sensing of Ocean Color from Space. *Applied Optics*, 39(6), 887-896.
- Gonzalez, R. and G. P. Eberli, 1997. Sediment transport and sedimentary structures in a carbonate tidal inlet; Lee Stocking Island, Exuma Islands, Bahamas. *Sedimentology*, 44, 1015-1030.

Hochberg, E. J. and M. J. Atkinson, 2000. Spectral discrimination of coral reef benthic communities. *Coral Reefs*, 19, 164-171.

Kohler, D. D. R., 2001. An evaluation of a derivative based hyperspectral bathymetric algorithm. Ph. D. Dissertation, Cornell Univ. Ithaca, N.Y, 113 pp.

Kruse, F. A., A. B. Lefkoff, J. W. Boardman, K. B. Heidebrecht, A. T. Shapiro, P. J. Brloon, and A. F. H. Goetz, 1993. The spectral image processing system (SIPS)—Interactive visualization and analysis of imaging spectrometer data. *Remote Sens. Environ.* 44, 145-163.

Leathers, R. A., T. V. Downes, W. A. Snyder, J. H. Bowles, C. O. Davis, M. E. Kappus, W. Chen, D. Korwan, M. J. Montes, W. J. Rhea and M. E. Carney, 2002. Ocean PHILLS Data Collection and Processing: May 2000 Deployment, Lee Stocking Island, Bahamas. Naval Research Laboratory Formal Report NRL/FR/7212-02-10,010.

Louchard, E., R. P. Reid, F. C. Stephens, C. O. Davis, R. A. Leathers, and T. V. Downes, 2003. Optical remote sensing of benthic habitats and bathymetry in coastal environments at Lee Stocking Island, Bahamas: A comparative spectral classification approach. *Limnol. Oceanogr.* 48(1,part 2) 511-521.

Mazel, C. H. 1997. Diver-operated instrument for in situ measurement of spectral fluorescence and reflectance of benthic marine organisms and substrates. *Opt. Eng.* 36: 2612-2617.

Mazel, C. H. and E. Fuchs, 2003. Contribution of fluorescence to the spectral signature and perceived color of corals. *Limnol. Oceanogr.*, 48(1, part 2), 390-401.

Melack, J. M. and M. Gastil, 2001. Airborne remote sensing of chlorophyll distributions in Mono Lake, California, *Hydrobiologia*, 466, 31-38.

Mobley, C. D., L. K. Sundman, and E. Boss, 2002. Phase function effects on oceanic light fields. *Appl. Optics* 41, 1035-1050.

Montes, M. J., B.-C. Gao and C. O. Davis, 2001. A new algorithm for atmospheric correction of hyperspectral remote sensing data. In *Geo-Spatial Image and Data Exploitation II*, Proceedings of the SPIE, 4383, 23-30.

Sandage, J. C. and R. J. Holyer, 1998. Coastal Bathymetry from Hyperspectral Observations of Water Radiance. *Remote Sens. Environ.*, 65, 341-352.

Shettle, E. P. and Fenn, R. W. 1979. Models for the aerosols of the lower atmosphere and the Effects

of humidity variations on their optical properties. Air Force Geophysics Laboratory Technical Report AFGL-TR-79-0214.

Stephens, F. C., E. M. Louchard, R. P. Reid, and R. A. Maffione, 2003. Effects of microalgal communities on reflectance spectra of carbonate sediments in subtidal optically shallow marine environments. *Limnol. Oceanogr.* 48(1, part1), 535-546.

Ulloa, O., S. Sathyendranath, and T. Platt, 1994. Effect of the particle-size distribution on the backscattering ration in seawater. *Appl. Optics*, 33(30), 7070-7077.

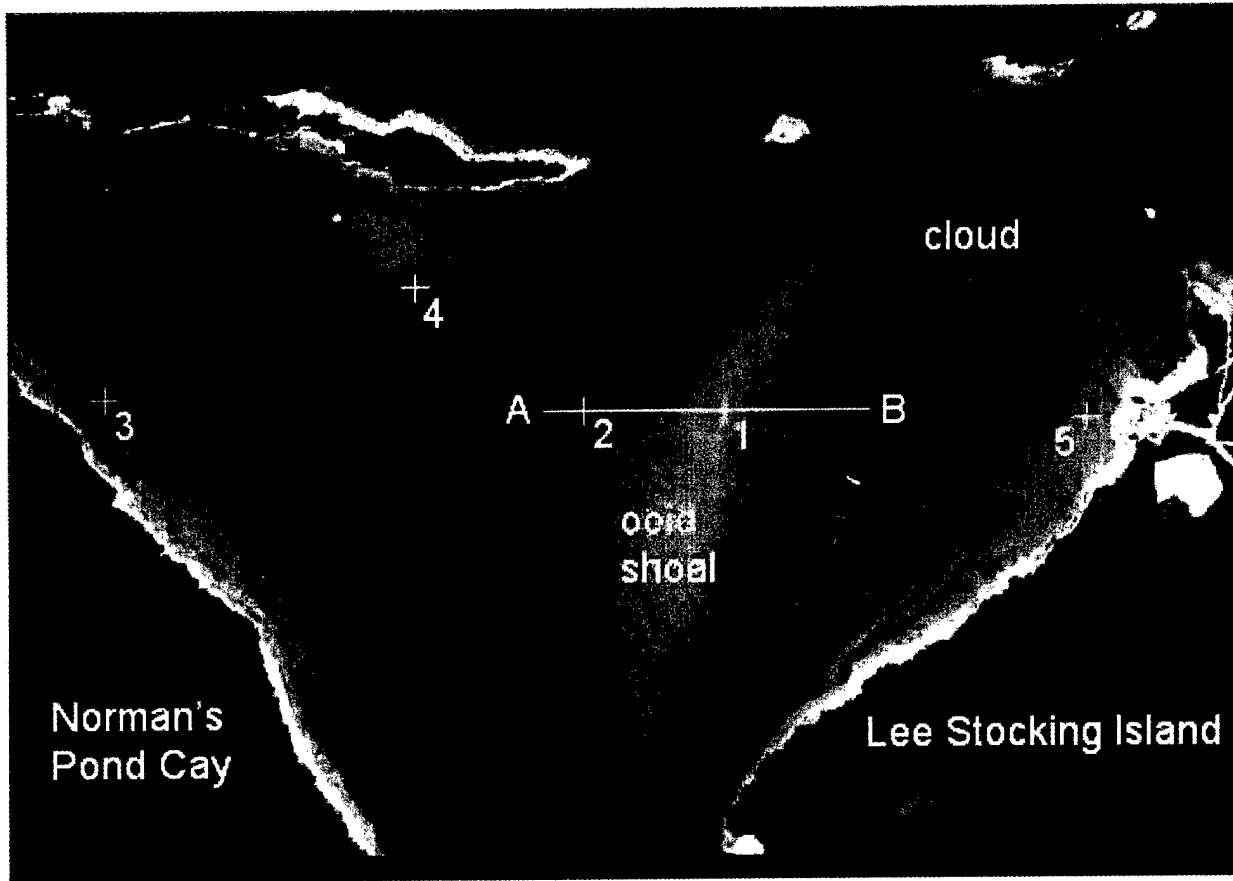


Fig. 1. RGB image of Adderly Cut generated from wavelengths 446, 565, and 680 nm of the hyperspectral PHILLS data [from Run04Seq010203_Rrs_SS5_UTM_Adderly.bil] The entire flight line is shown in Fig. 17. Line AB is the West to East transect plotted in Fig. 3. The numbered points show the locations of the R_{rs} spectra plotted in Fig. 9.

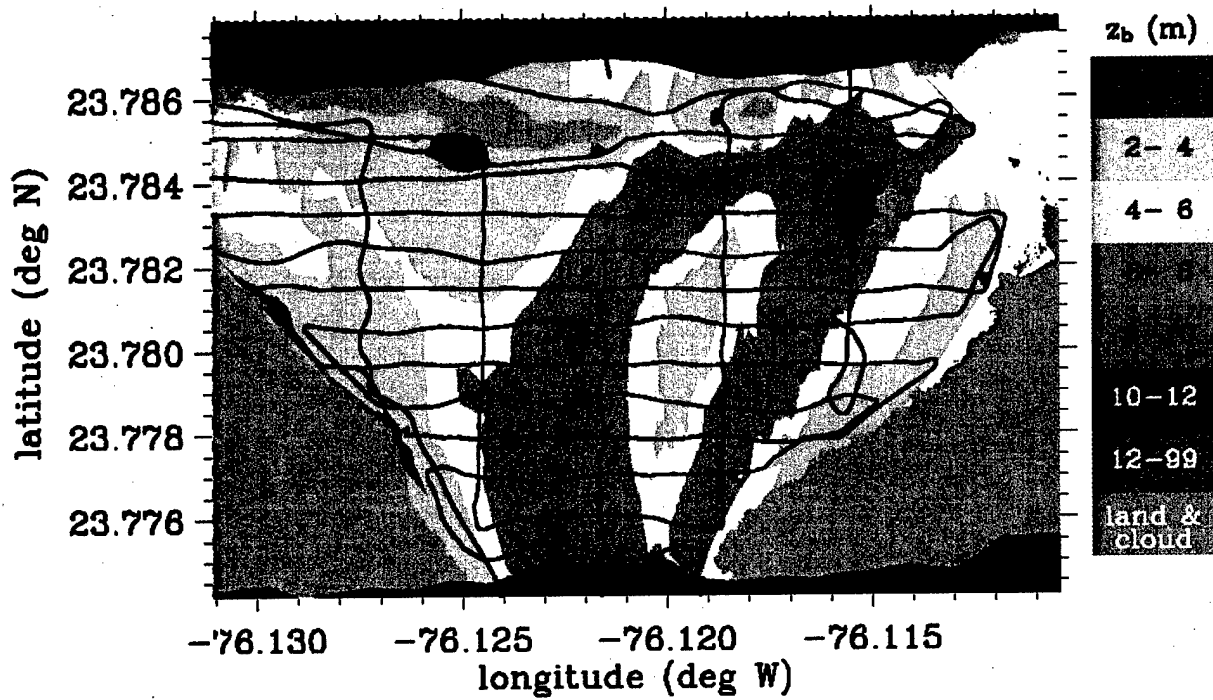


Fig. 2. Bathymetry corresponding to the area shown in Fig. 1. The black line shows the track of the small boat used to acquire the acoustic data.

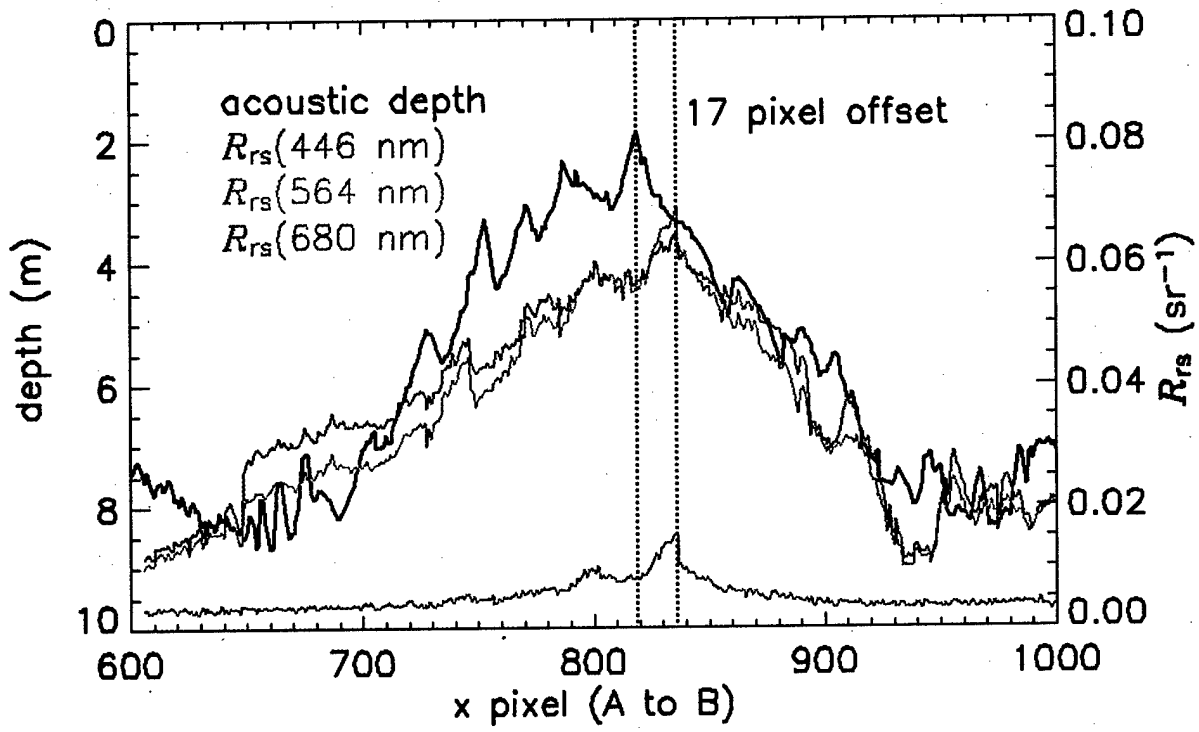


Fig. 3. Comparison of acoustic depth and R_{rs} along West to East transect AB shown in Fig. 1

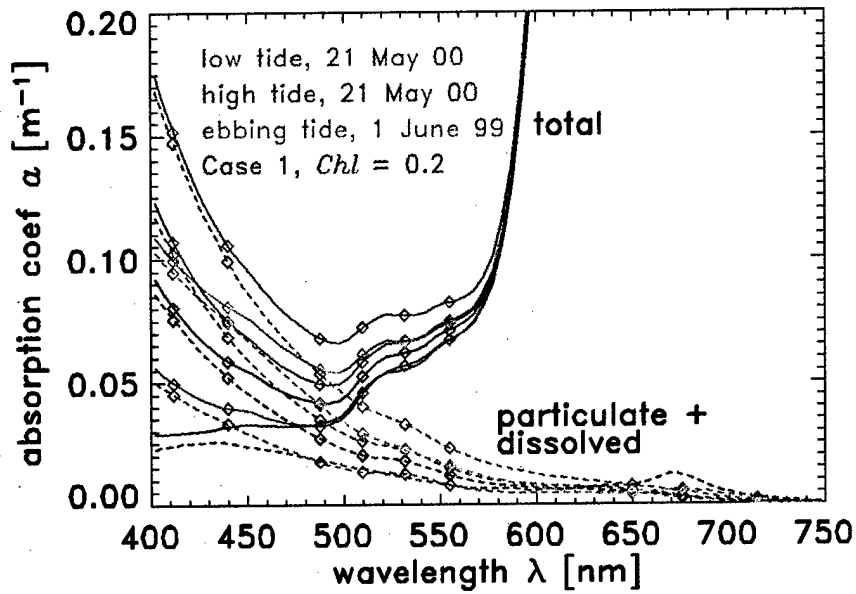


Fig 4(a). Measured ac-9 absorption spectra. The solid lines include absorption by pure water.

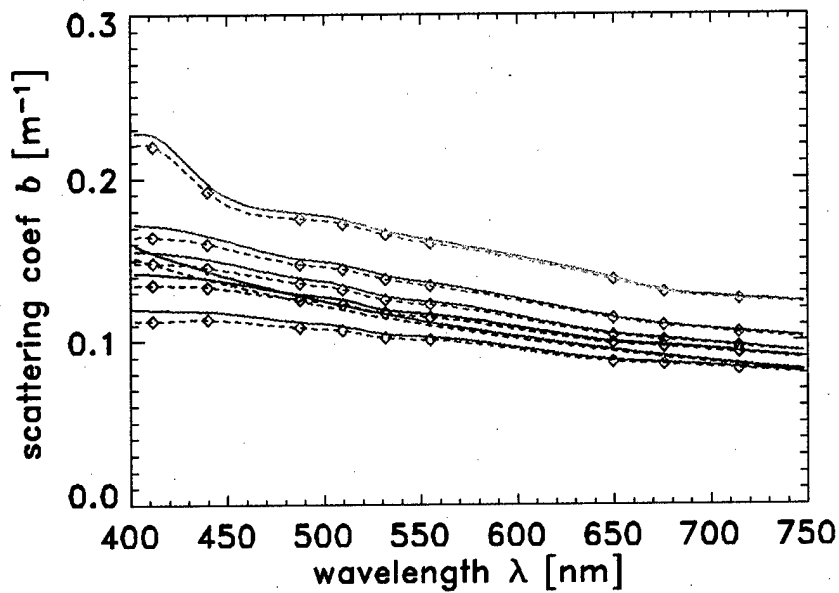


Fig. 4(b). Measured ac-9 scattering spectra. The colors and line patterns are the same as for Fig. 4(a).

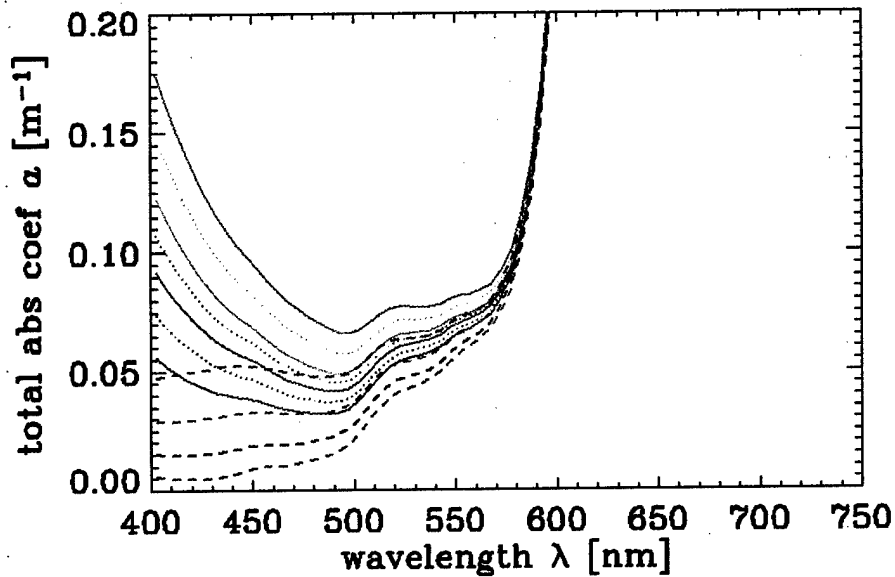


Fig. 5(a) The 11 total absorption spectra in the database. Solid lines: measured ac-9 spectra; dotted lines: interpolated ac-9 spectra; dashed lines: pure water (bottom curve) and Case 1 models.

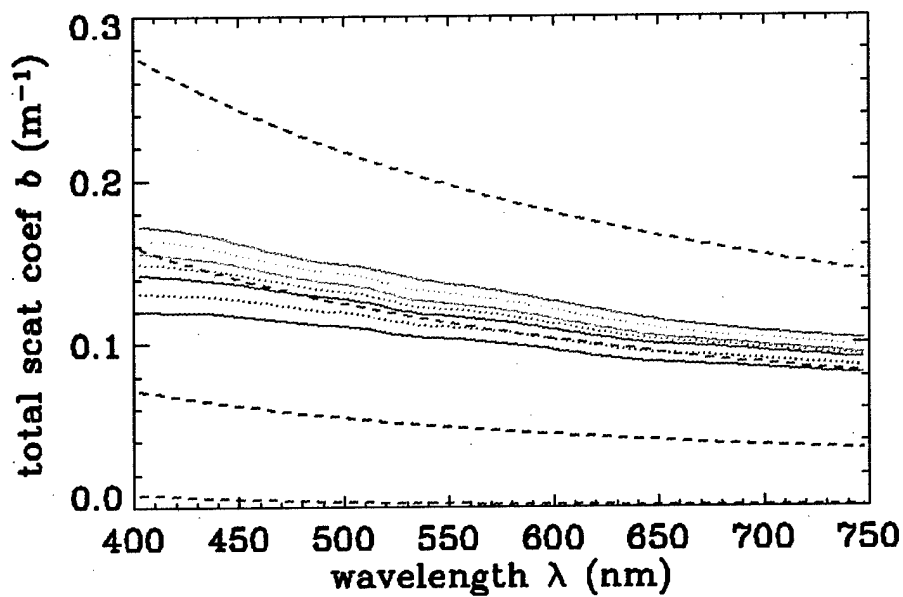


Fig. 5(b). The 11 total scattering spectra in the database. The line patterns are the same as in panel (a).

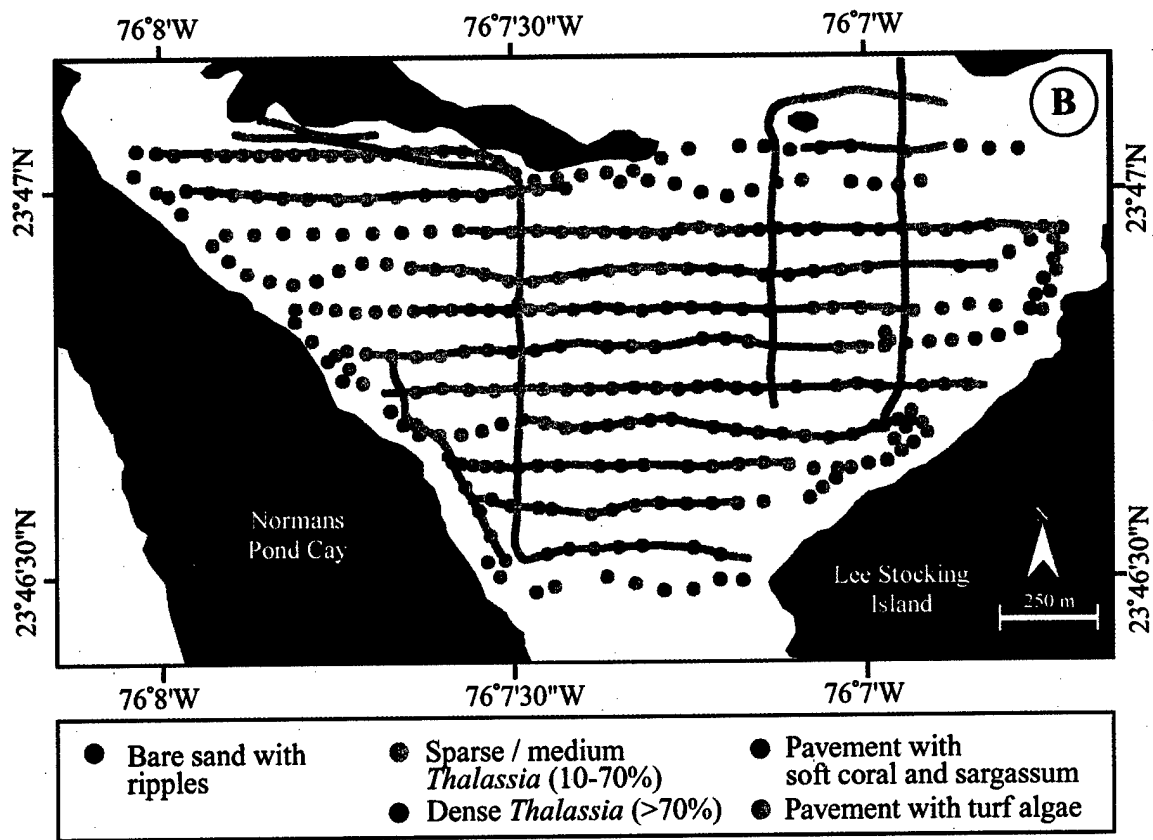


Fig. 6. Bottom classification based on diver observation and video recorded from a small boat.

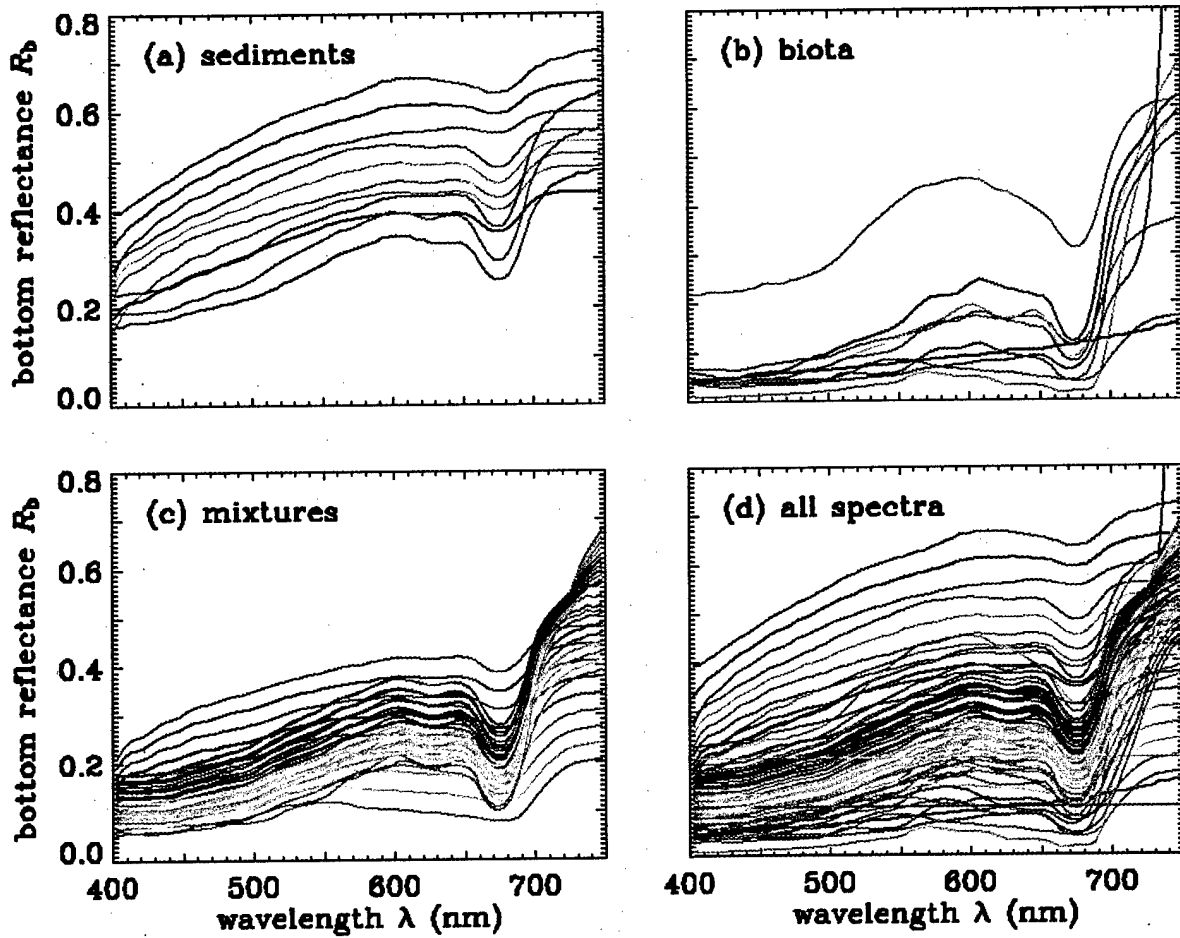


Fig. 7. Irradiance reflectances of various bottom materials and mixtures.

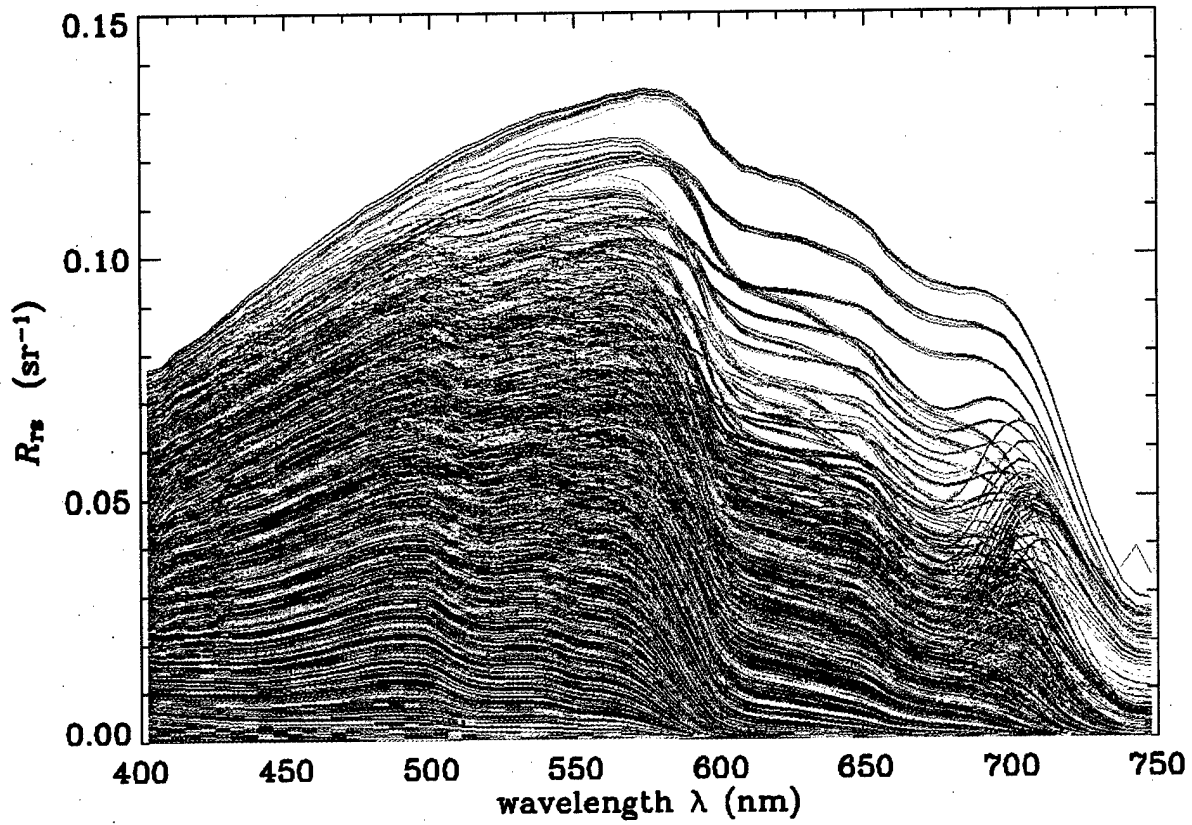


Fig. 8. The 41,591 EcoLUT-generated R_{rs} spectra in the LUT database.

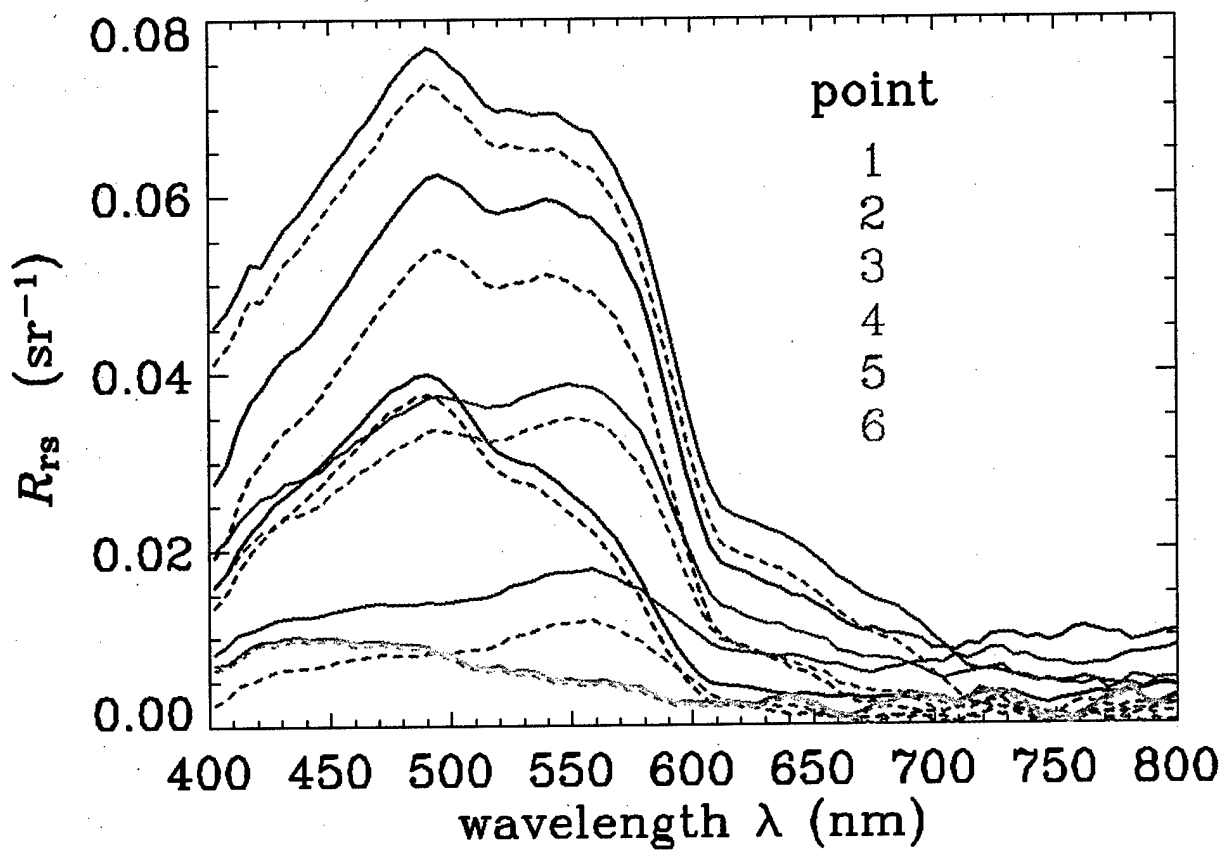
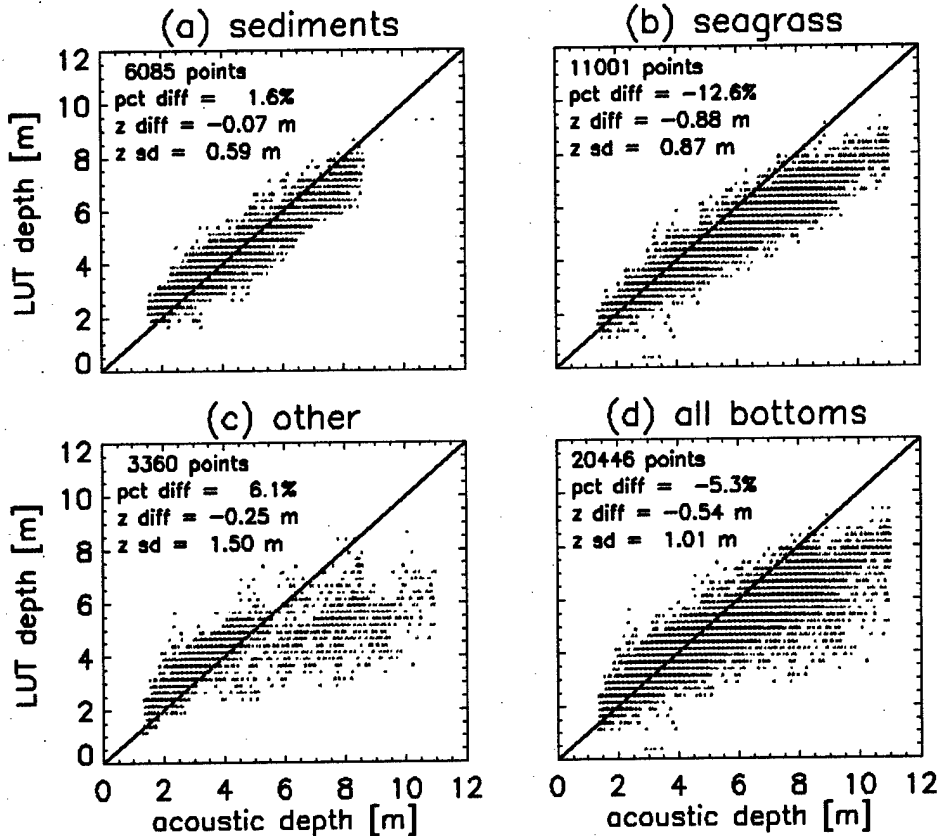
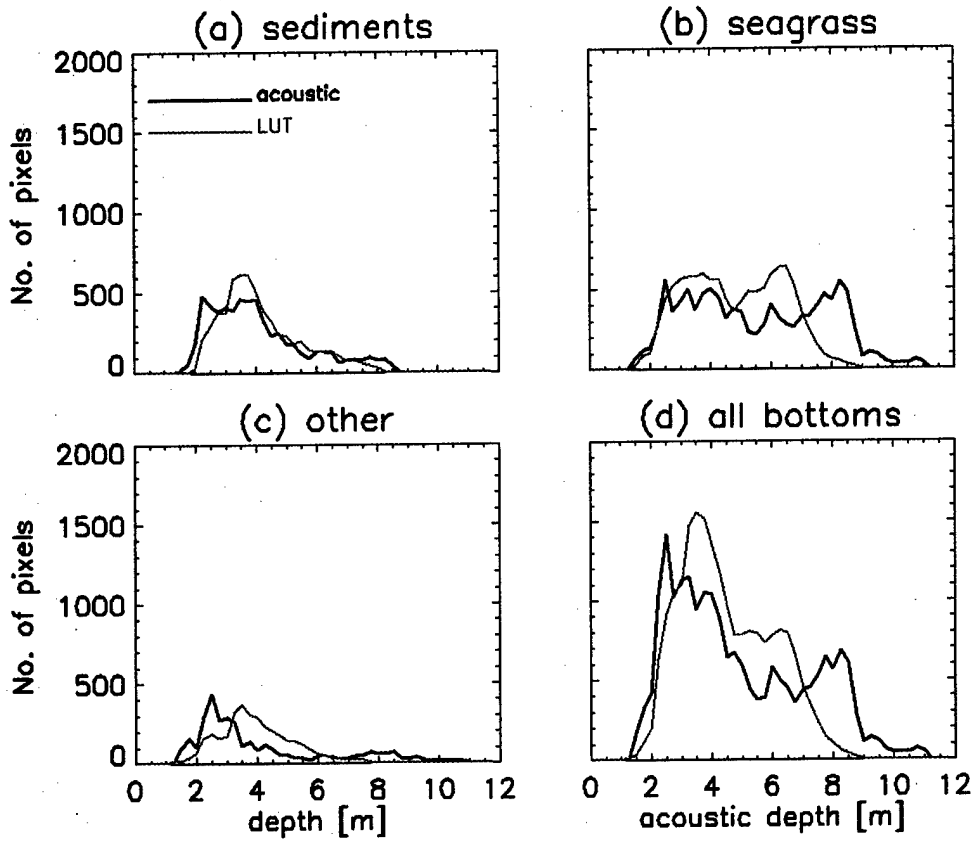


Fig. 9. PHILLS R_{rs} at selected pixels, located as shown in Fig. 1. The solid lines are the PHILLS spectra; the dashed lines are the corresponding spectra offset to zero at the minimum value of the spectra.



Run04Seq010203_Rrs_ss5_UTM_Adderly_Closure2_Rramin_Rb1-63_IOP1-11_W400-750_LUT.txt

Fig. 10. Comparison of LUT-retrieved and acoustic depths as obtained from the offset PHILLS spectra and the unconstrained database. The percent difference (pct diff) and depth differences (z diff) are computed using Eqs. (2) and (3), respectively. The standard deviation of the depth differences is displayed as "z sd."



Run04Seq010203_Rrs_ss5_UTM_Alderly_Closure2_Rrmin_Rb1-63.JOP1-11_W400-750_LUT.txt

Fig. 11. Depth distribution of the number of pixels for different retrieved bottom types.

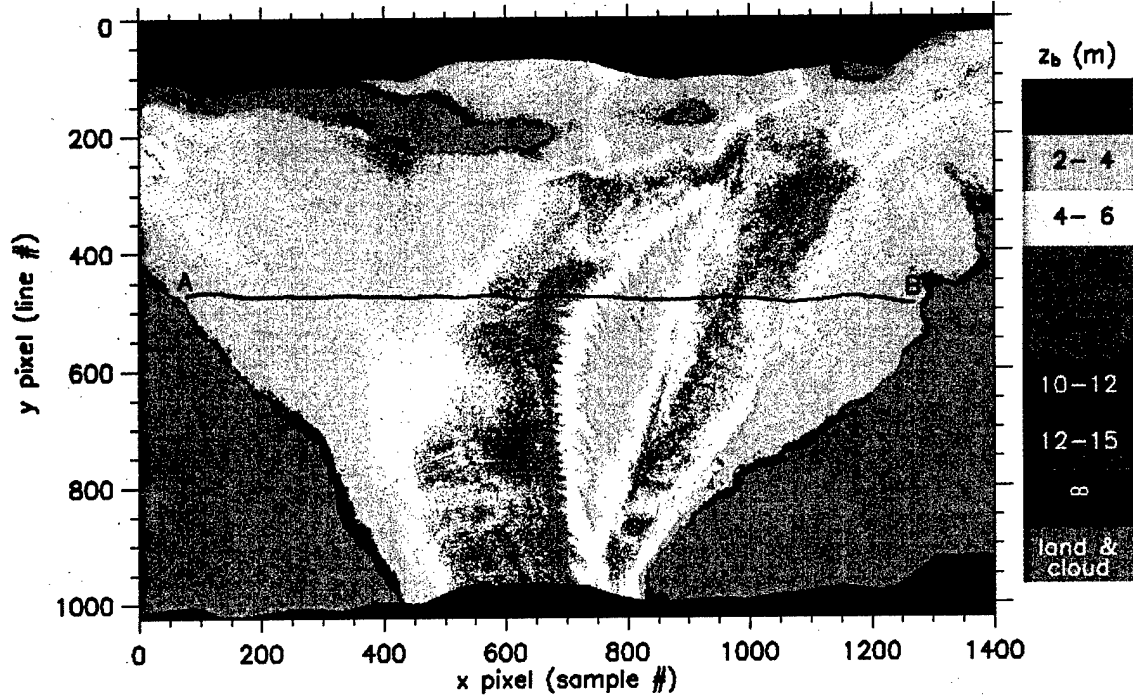


Fig. 12. Pixel-by-pixel map of LUT-retrieved depths as obtained using the offset PHILLS spectra and the unconstrained database; compare with Fig. 2. Line AB shows the boat track used for pixel-by-pixel comparison with acoustic depths in Fig. 13.

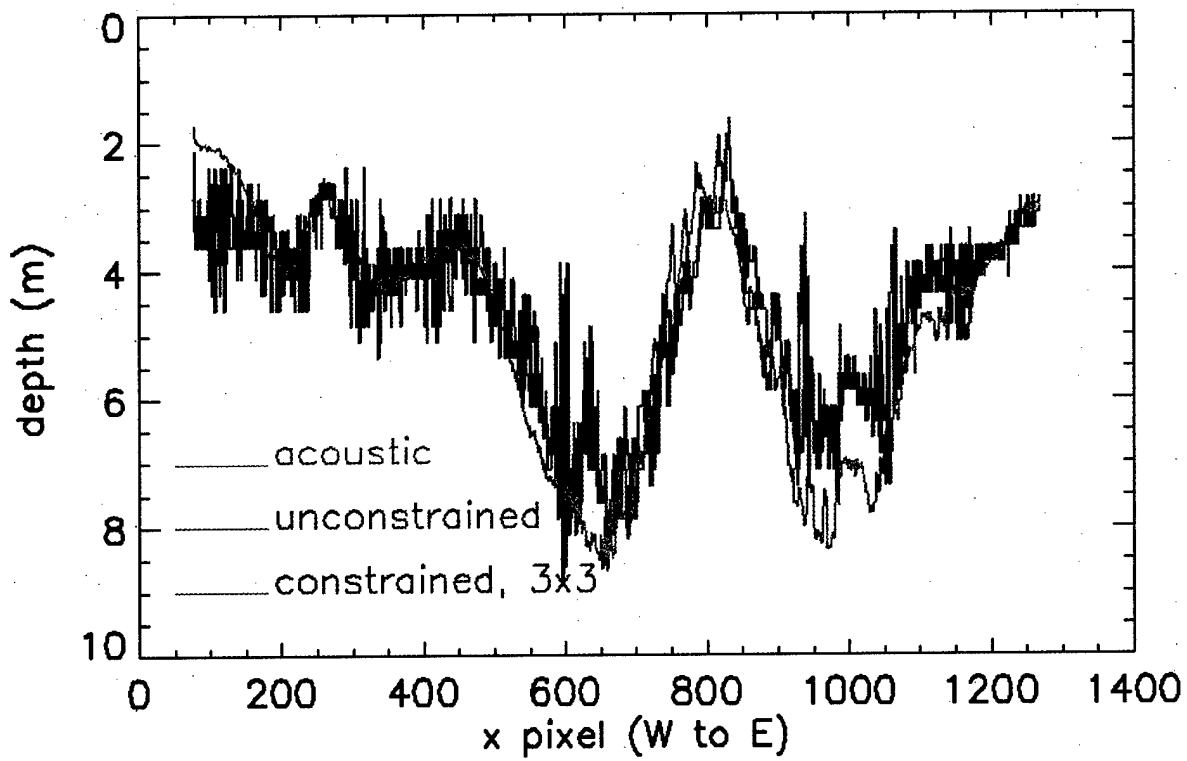


Fig. 13. Comparison of acoustic and LUT-retrieved depths along line AB shown in Fig. 12. The unconstrained line is for a LUT inversion using the full dataset of 63 bottoms and 11 IOPs. The constrained, 3x3 line refers to the constrained inversion for 60 bottoms and IOPs 2-4 applied to the PHILLS image after 3x3 pixel smoothing.

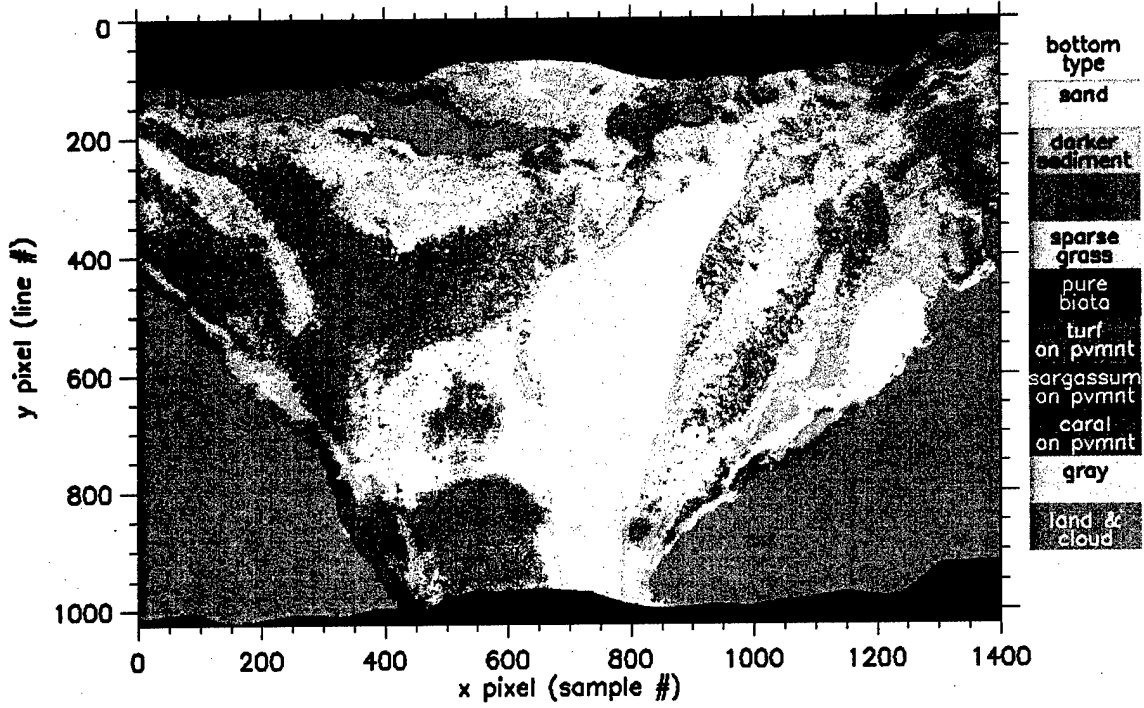


Fig. 14. LUT-retrieved bottom type for the unconstrained inversion.

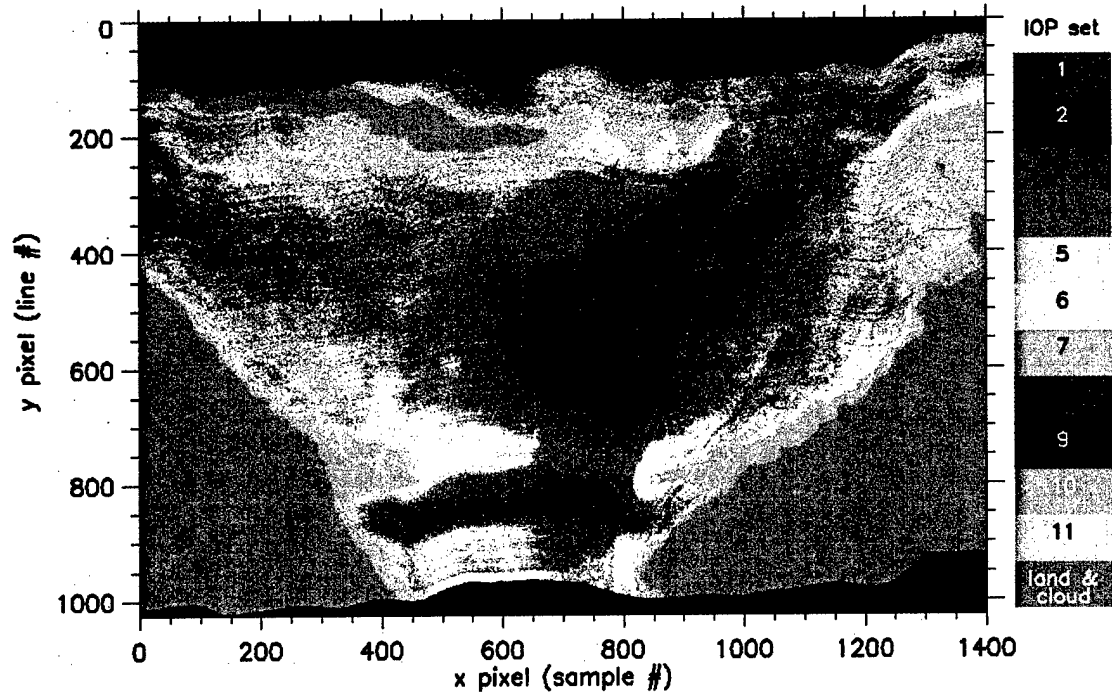


Fig. 15. LUT-retrieved IOPs corresponding to Figs. 12 and 14.

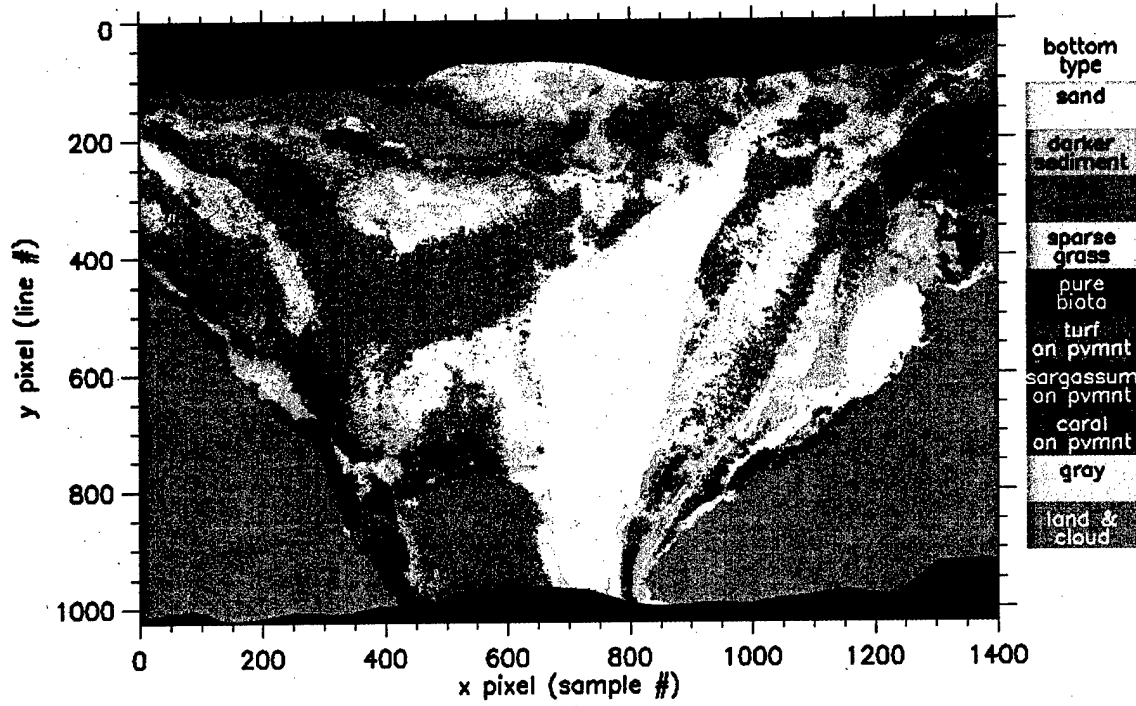
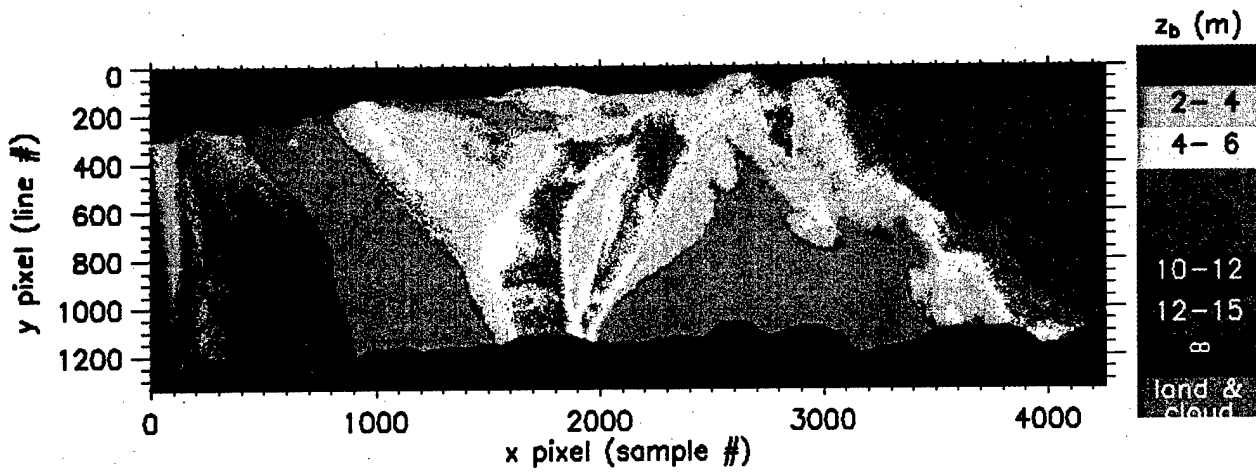


Fig. 16. Bottom type retrieval for the constrained database with only IOPs 2-4. Compare with Figs. 6 and 14.

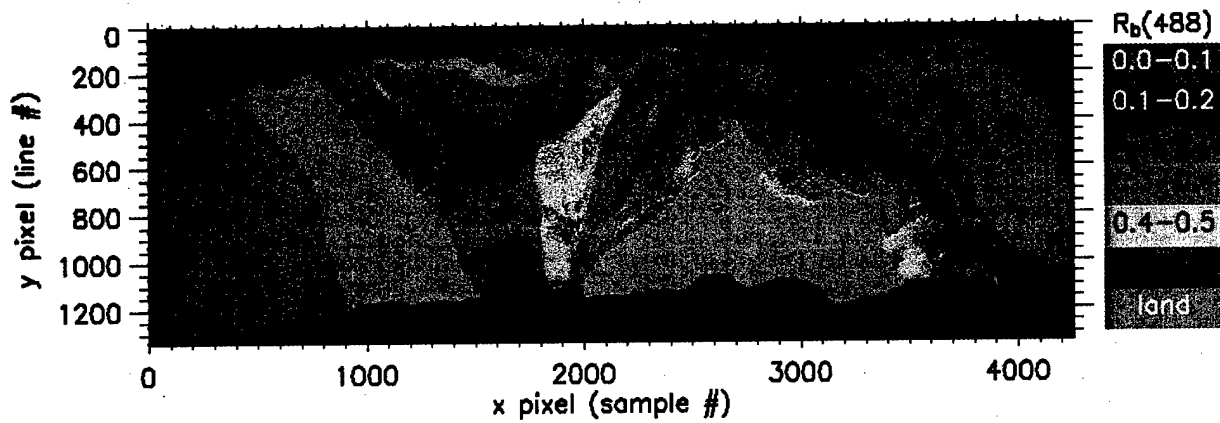


Fig. 17. The entire PHILLS flight line of 0930 local time, 17 May 2000.



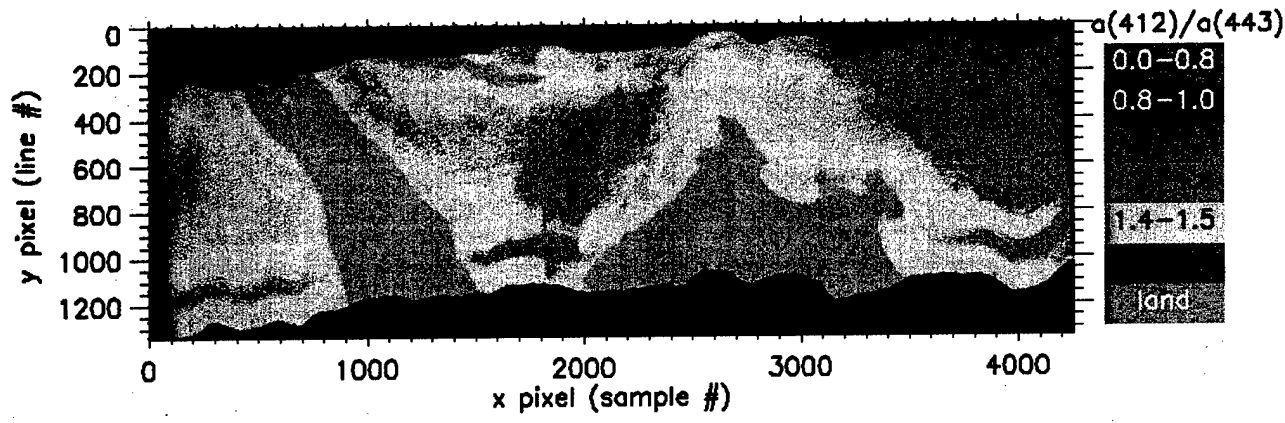
Run04Seq010203_Rrs_ss5_UTM_Closure2_Rrmin_Rb1-60_IOP1-7_W400-600_LUT.txt

Fig 18. Depth retrieval for the entire flight line.



Run04Seq010203_Rra_ss5_UTM_Closure2_Rrmin_Rb1-60_IOP1-7_W400-600_LUT.txt

Fig 19. Retrieved bottom reflectance at 488 nm.



Run04Seq010203_Rra_ss5_UTM_Closure2_Rrmin_Rb1-60_IOP1-7_W400-600_LUT.txt

Fig. 20. Retrieved ratio of $a(412)/a(443)$. The green band near the bottom of the figure and parallel to the image edge likely results from data artifacts in those PHILLS pixels.