

NONLINEAR INTERNAL WAVES IN THE SOUTH CHINA SEA DURING ASIAEX

Antony K. Liu

NASA Goddard Space Flight Center, Greenbelt MD, USA

David T. Y. Tang

National Taiwan University, Taipei, Taiwan

and Steve R. Ramp

Naval Postgraduate School, Monterey CA, USA

OUTLINE:

- 0 Satellite Coverage and Analysis of RADARSAT SAR Images
- 0 Internal Wave Distribution Maps in SCS from SAR images during ASIAEX-2001
- 0 SAR and Mooring Data Comparison and Integration on May 9-10, and May 4-5, 2001
- 0 Environmental Parameters and Data Assimilation by Numerical Model
- 0 Wave-wave Interaction on May 18, and May 4, 2001 from SAR Imagery
- 0 Summary of the Characteristics of Internal Waves in SCS during ASIAEX
- 0 Implication of Internal Wave Effects on Acoustic Propagation

Report Documentation Page

Form Approved
OMB No. 0704-0188

Public reporting burden for the collection of information is estimated to average 1 hour per response, including the time for reviewing instructions, searching existing data sources, gathering and maintaining the data needed, and completing and reviewing the collection of information. Send comments regarding this burden estimate or any other aspect of this collection of information, including suggestions for reducing this burden, to Washington Headquarters Services, Directorate for Information Operations and Reports, 1215 Jefferson Davis Highway, Suite 1204, Arlington VA 22202-4302. Respondents should be aware that notwithstanding any other provision of law, no person shall be subject to a penalty for failing to comply with a collection of information if it does not display a currently valid OMB control number.

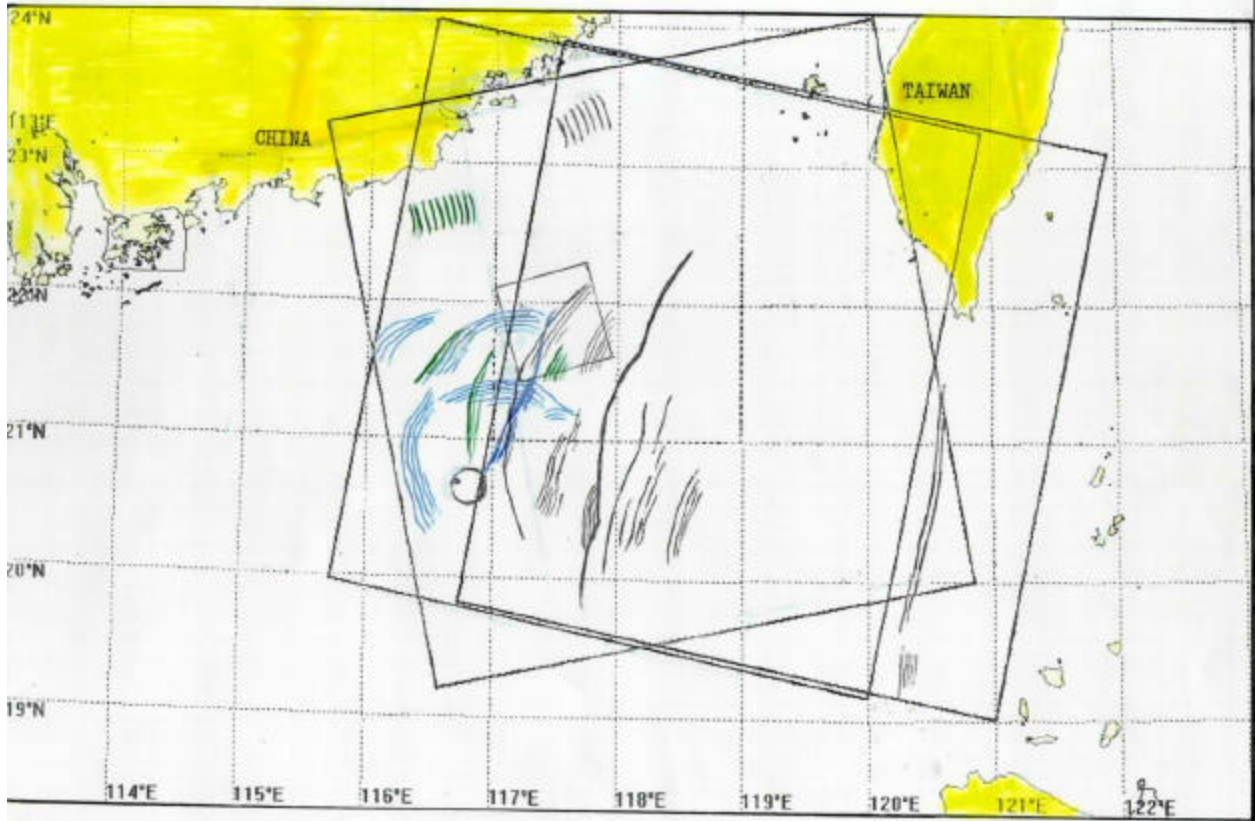
1. REPORT DATE 01 DEC 2002		2. REPORT TYPE N/A		3. DATES COVERED -	
4. TITLE AND SUBTITLE Nonlinear Internal Waves in the South China Sea During ASIAEX				5a. CONTRACT NUMBER N00014-99-1-0275	
				5b. GRANT NUMBER	
				5c. PROGRAM ELEMENT NUMBER	
6. AUTHOR(S)				5d. PROJECT NUMBER	
				5e. TASK NUMBER	
				5f. WORK UNIT NUMBER	
7. PERFORMING ORGANIZATION NAME(S) AND ADDRESS(ES) NASA Goddard Space Flight Center, Greenbelt MD, National Taiwan University, Taipei, Taiwan, Naval Postgraduate School, Monterey, CA				8. PERFORMING ORGANIZATION REPORT NUMBER	
9. SPONSORING/MONITORING AGENCY NAME(S) AND ADDRESS(ES)				10. SPONSOR/MONITOR'S ACRONYM(S)	
				11. SPONSOR/MONITOR'S REPORT NUMBER(S)	
12. DISTRIBUTION/AVAILABILITY STATEMENT Approved for public release, distribution unlimited					
13. SUPPLEMENTARY NOTES Also See: M001452, The original document contains color images.					
14. ABSTRACT					
15. SUBJECT TERMS					
16. SECURITY CLASSIFICATION OF:			17. LIMITATION OF ABSTRACT UU	18. NUMBER OF PAGES 14	19a. NAME OF RESPONSIBLE PERSON
a. REPORT unclassified	b. ABSTRACT unclassified	c. THIS PAGE unclassified			

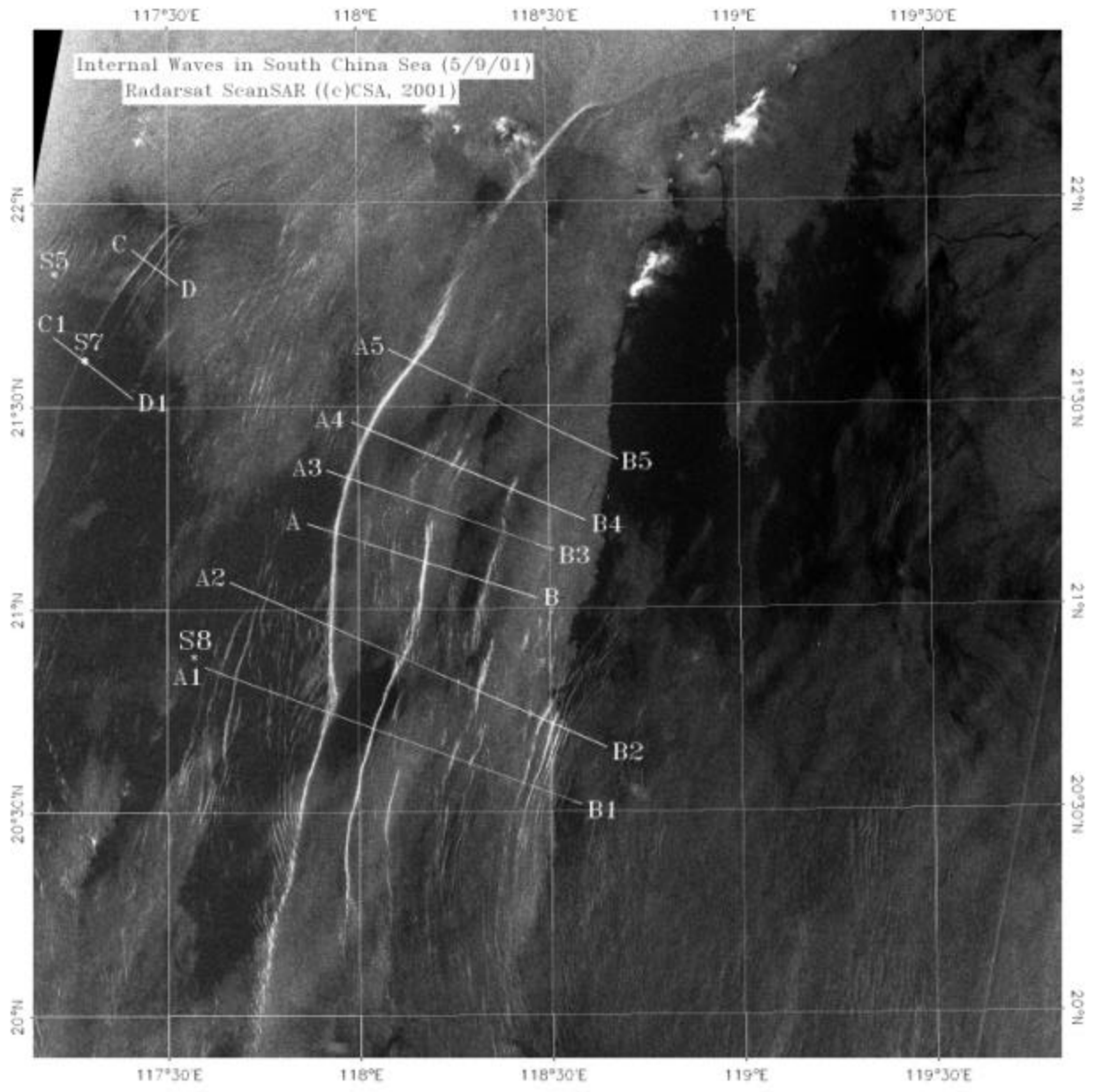
Satellite Coverage and RADARSAT ScanSAR Images in SCS

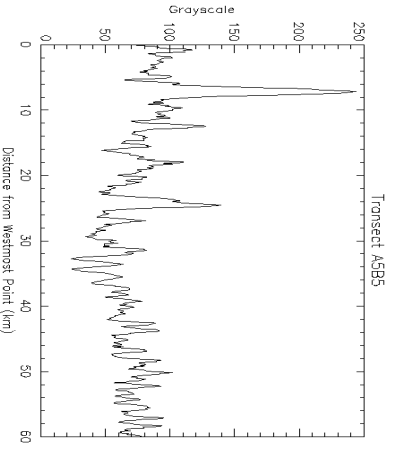
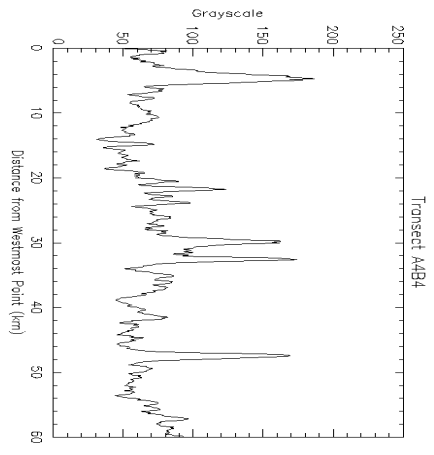
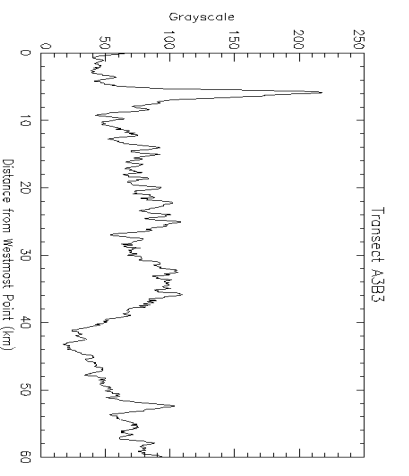
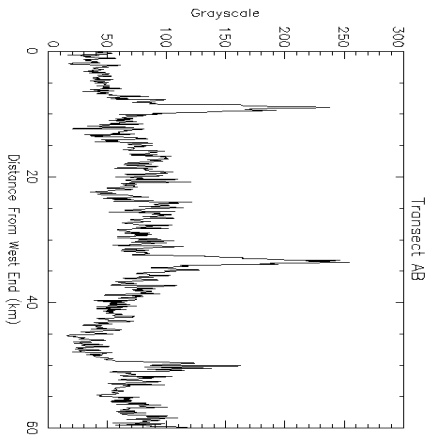
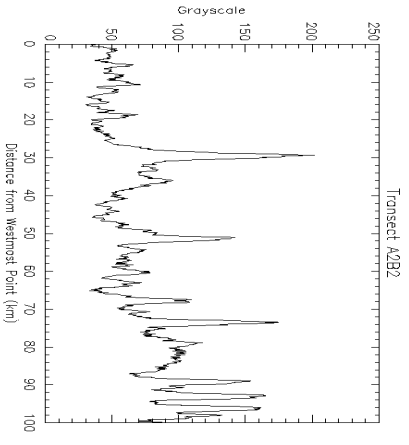
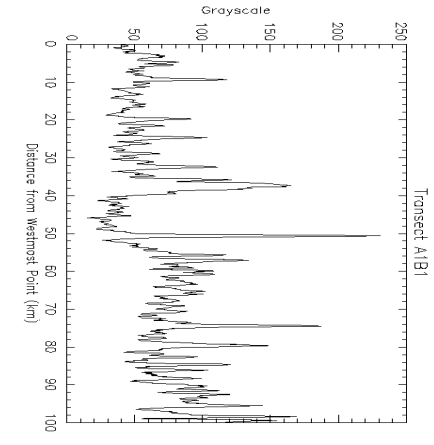
- On January 25, 2001 ERS-2's gyro#1 failed, and Taiwan Ground Station can no longer process SAR images.
- In replacement, all cloud-free SPOT images (60km * 60km) with 20m resolution were collected and processed in near-real time during ASIAEX from Taiwan Ground Station.
- Most of days during ASIAEX, SPOT images were obscured by the cloud-cover and internal waves were visible only on May 7 and May 14, 2001.
- Four RADARSAT ScanSAR images (500km * 500km) from May 2, May 9, May 18, and May 11 (replaced by June 4) have been collected during ASIAEX through RADARSAT International.
- On May 11, due to transmission problem the SAR data were lost (Typhoon?).
- RADARSAT Standard SAR images (100km * 100km) from April 17, 18, 24 and May 1, 4, 5, 19, 26, 28, 2001 have been collected during ASIAEX through NRL and NOAA Satellite Active Archive (SAA).

Internal Wave Distribution Map from RADARSAT in the South China Sea during ASIAEX-2001

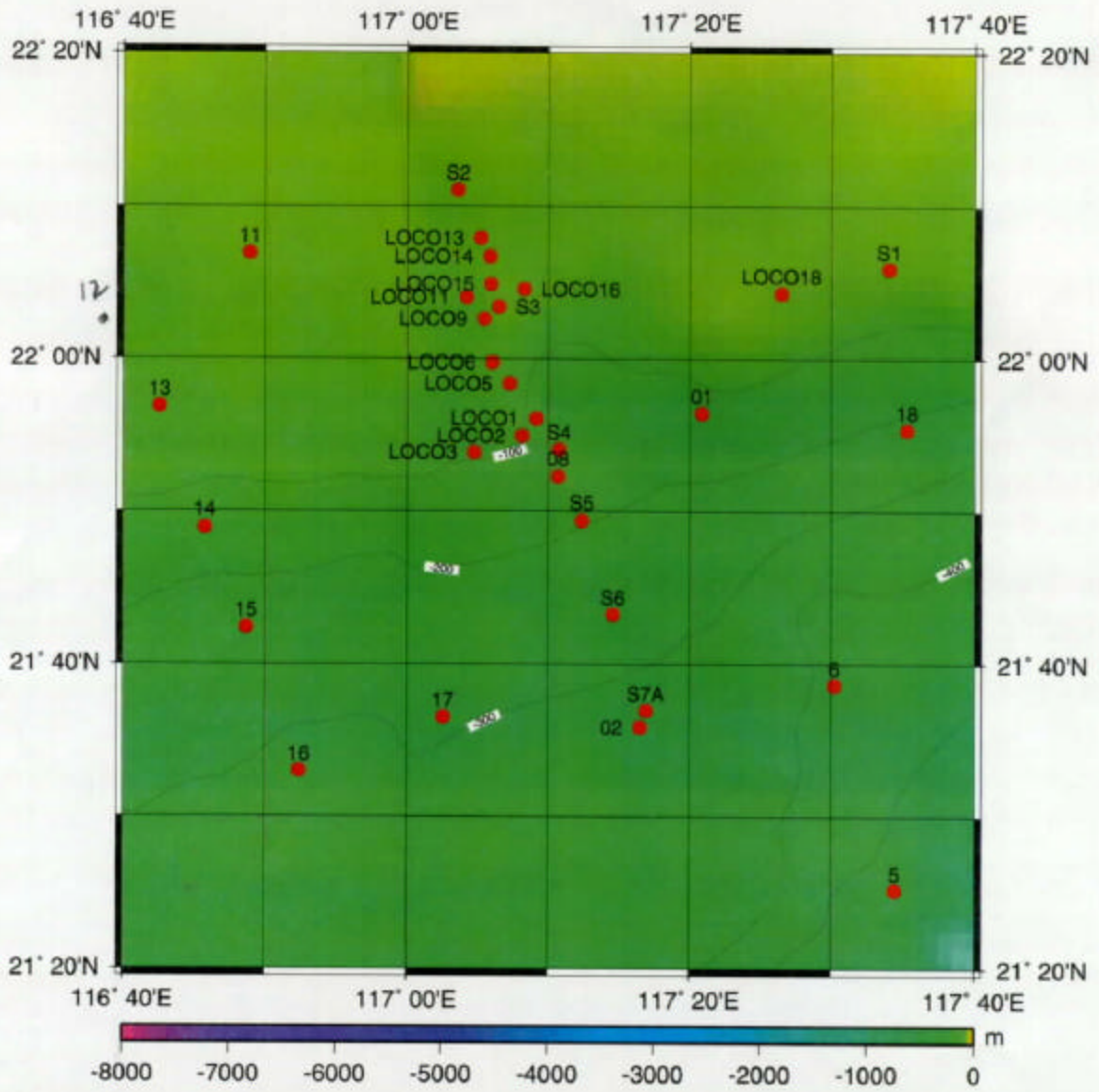
Antony K. Liu, NASA/GSFC

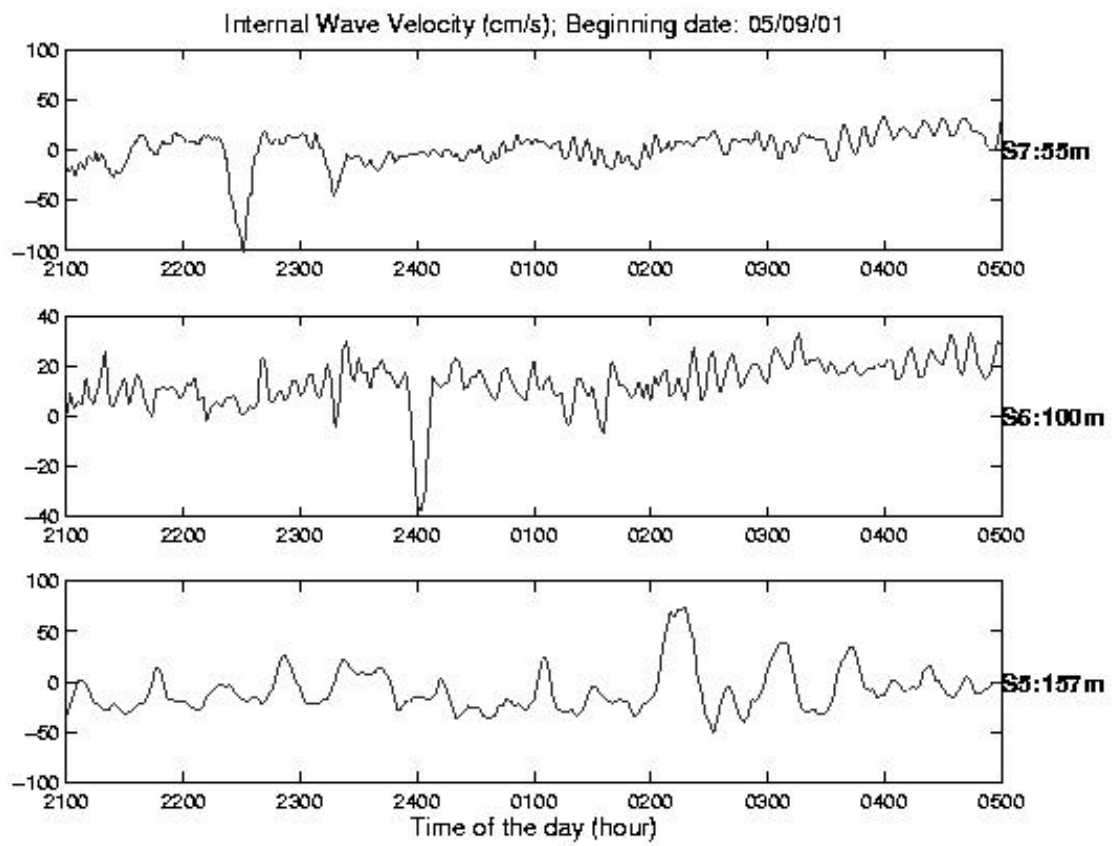






ASIAEX CTD Stations





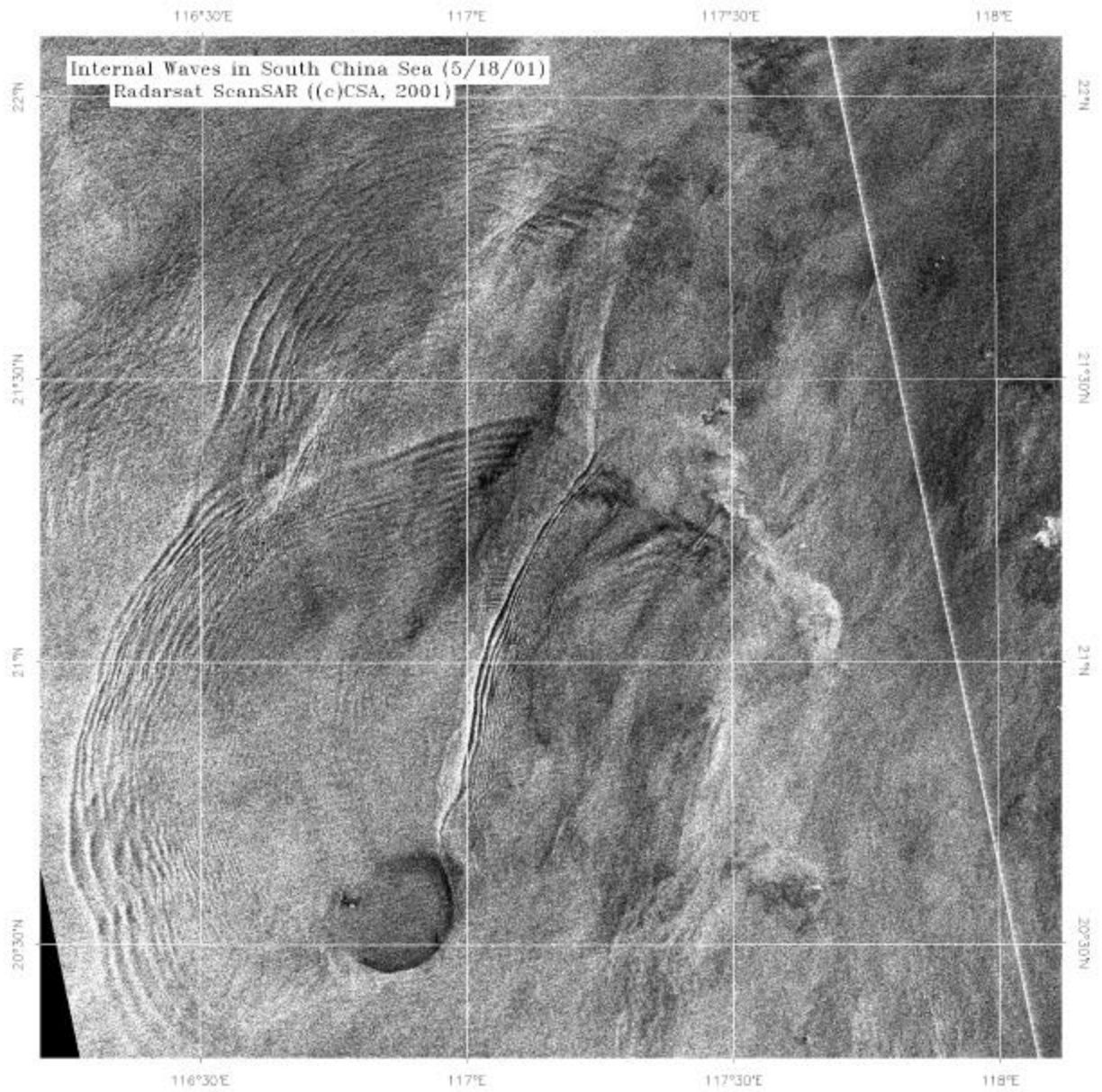
SUMMARY OF SAR AND MOORING DATA COMPARISON (May 9-10)

SENSOR (ADCP)	S2	S4	S5	S6	S7	S8	SAR
DEPTH (m)	71	120	184	275	350	800	---
DISTANCE (km)	34.1	8.5	12.9	12.0	88.1		
SHIFT TIME (min)	762	162	134	91	415		744
	---	160	132	91	468		
IW DIR (deg)	75/85	45	45	25/5	25	---	28
MOOR DIR	16	16	16	16	16		
SHIFT DIST (km)	33.1	7.4	10.0	6.2	44.1		76
IW SPEED (m/s)	0.72 (0.33)	0.76 0.77	1.24 1.26 (1.14)	1.14 (1.54) 1.14	1.77 1.57 (1.75)		1.70
IW WIDTH (km)	---	0.7	1.5 1.6	0.9 1.5 (0.8)	1.4 1.4	---	1.4 2.5
SOLITON #	---	---	3	3	3	(0.7)	3
IW LENGTH (km)	---	1.2	2.4-1.6 7.6-1.8	4.2-1.6 10.4-2.4	4.4-2.1 10.5-3.6	9.7-2.4 7.9-2.5	4.3-2.8 13.3-5.2
CURRENT (m/s)	0.3 ---	0.5 0.4	0.9 1.2	0.6 0.8	1.2 1.6	---	---
AMPLITUDE (m)	---	---	(80/90)	(32/63)	(70/95)	---	---

SUMMARY

- 0 Satellite Remote Sensing Is Critical to Several Aspects of ASIAEX, Including Tracking Internal Waves, and Locating Fronts, Especially the Synoptic 2-D Internal Wave Pattern in the Test Area.
- 0 Comparison of RADARSAT ScanSAR and Mooring Data Show Good Agreement and Consistent Internal Wave Field with Marine Radar Images and Model Results on May 4-5, and 9-10, 2001.
- 0 Remote Sensing and Mooring Data Can Be Integrated by Numerical Simulations from Deep Ocean (SAR) to S5/6/7 (Mooring) on Shelf Using Modified KDV-Type Internal Wave Evolution Code.
- 0 Typical Internal Wave Characteristics:
 - Water Depth and Density: 800 m to 70 m and CTD Data
 - Internal Wave Direction: 25° to 75° (Ray Tracing Method)
 - Internal Wave Speed: 1.7 m/s to 0.7 m/s
 - Soliton Width: 1.5 km to 0.7 km
 - Soliton Number: 5 to 3 to Wave Train
 - Soliton Separation: 9.7 km and 2.4 km to Wavelength of 1.2 km
 - Wave Amplitude: 95 m to 32 m
 - Dissipation: Eddy Viscosity up to $5 \text{ m}^2/\text{s}$
- 0 Wave-Wave Interaction Has Been Observed on May 4 and 18, 2001 in ASIAEX Test Area and Is Very Important for Acoustic Applications (Two-Dimensional Effects).

WAVE-WAVE INTERACTION



SUMMARY OF SAR AND MOORING DATA COMPARISON (May 4-5)

SENSOR (ADCP)	S2	S3	S4	S5	S6	S7	S8	SAR
DEPTH (m)	71	85	120	184	275	350	800	---
DISTANCE (km)	15.1	19.0	8.5	12.9	12.0	88.1		
SHIFT TIME (min)	---	420	67	117	84	---		744
	---	---	59	122	78	437		
IW DIR (deg)	90	80	75	55*				13
			15	45*	5	25		10
MOOR DIR	16	16	16	16	16	16	16	
SHIFT DIST (km)	15.0	19.0	8.0					
		9.8	6.1	8.5	6.2	38.6		56
IW SPEED (m/s)	(0.35)	---	0.75	2.00*	1.21	1.23	---	---
				(0.77)	(1.18)	(1.72)		
	(0.33)	----	1.72*	1.16	(1.14)	1.32	1.47	(1.55)
			(1.43*)	(1.10)	(1.63)	(1.72)		1.26
IW WIDTH (km)			0.7	0.8	1.2	0.8	0.8	1.5
				(0.8)			(0.7)	
SOLITON #	Packet	---	3	2	3	1	1	2
IW LENGTH (km)	0.2	---	1.3-1.0	2.1	1.9-1.5	---	---	2.0
CURRENT (m/s)	---	---	---	0.3	0.3	0.3	---	---
	0.3	---	0.5	0.7	0.6	0.5	---	
AMPLITUDE (m)	---	---	---	---	(16/32)	---	---	---

* Effects of Wave-Wave Interaction

MODEL OF NONLINEAR INTERNAL WAVE EVOLUTION ON SHELF

0 Evolution Equation of Wave Amplitude $A(x,t)$ with Variable Coefficients

$$A_t + C_o A_x + \mathbf{a} A A_x + \mathbf{b} A_{xxx} - \mathbf{e} A_{xx} = 0, \quad U(z) = C_o A_o \mathbf{f}(z)$$

0 Eigen-Value Problem for Vertical Modes

$$\mathbf{f}'' + [N^2 - \mathbf{w}^2] \mathbf{f} / C_o = 0, \quad \mathbf{f}(0) = \mathbf{f}(-H) = 0, \quad C_o = \mathbf{w} / \mathbf{k}$$

0 Environmental Parameters

$$\text{Nonlinear: } \mathbf{a} = 3C_o \int_{-H}^0 \mathbf{f}'^3 dz \Big/ 2 \int_{-H}^0 \mathbf{f}'^2 dz$$

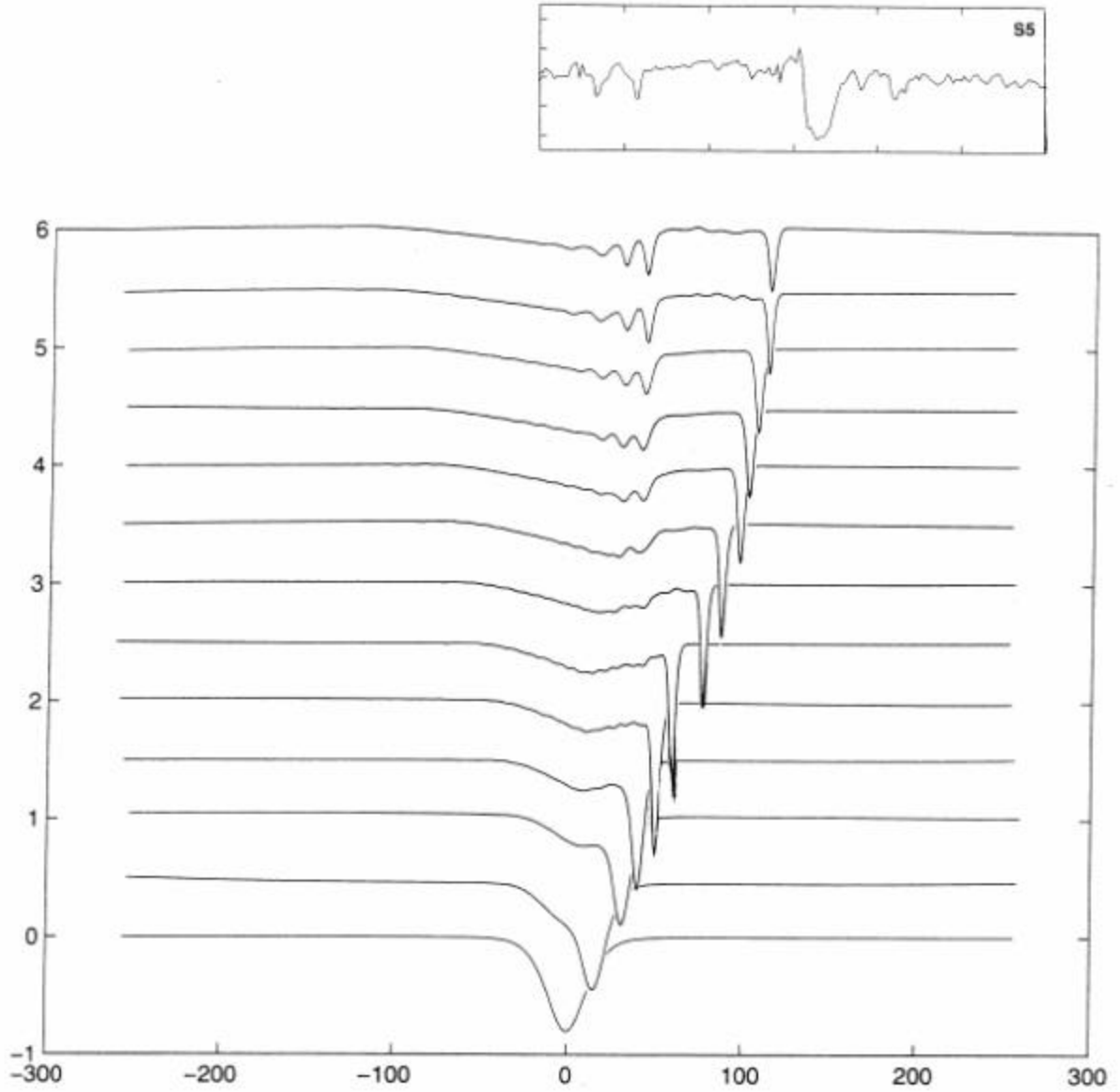
$$\text{Dispersion: } \mathbf{b} = \int_{-H}^0 \mathbf{f}^2 dz \Big/ 2 \int_{-H}^0 \mathbf{f}'^2 dz$$

Dissipation: \mathbf{e} - Eddy Viscosity

0 Numerical Simulations

- FFT in Spatial Coordinate
- Centered Divided Difference for Time Derivative
- Window Filter at the Computation Boundary
- Initial Waveform as Inputs from Field Data

NUMERICAL SIMULATION OF WAVE EVOLUTION



ACOUSTIC IMPACT OF INTERNAL SOLITONS

0 Resonance Coupling Effect

- Strong Horizontal Gradient in Sound Speed Induced by Internal Solitons
- Coupling between Acoustic Normal Modes

0 Time Spreading

- Differences in Acoustic Modal Group Velocities Cause Time Spreading of Pulses.
- Interference Patterns between Mode Multipaths Are Very Sensitive to Coupling Events.
- Significant Temporal Variation in Arrival-Time

0 Transmission Attenuation

- Coupling of Mode-1 into Higher Modes due to Soliton Packet
- In General, Attenuation Is Greater for Higher Modes
- Energy Sink and Significant Variability in Apparent Attenuation for Low Modes

0 Internal Soliton Parameters

- Soliton Number, Soliton Location, Soliton Direction, Soliton Wavelength, and Wave Packet Length
- More Soliton Activity Closer to Receiver, the Greater the Spreading and Bias in Arrivals

0 Two-Dimensional Effects

- Variability of Environmental and Soliton Parameters on Shelf in the ASIAEX Area
- Soliton Evolution Path Is not Aligned with Source and Receiver
- Wave-Wave Interaction