

Direct path fluctuations due to shallow water volume variability

Stephen Karpi, Kevin B Smith
Department of Physics
Naval Postgraduate School
Monterey, CA 93943

Steve Ramp
Department of Oceanography
Naval Postgraduate School
Monterey, CA 93943

Peter H Dahl
Applied Physics Lab
University of Washington
Seattle, WA 98105

Work supported by ONR, Code 3210A

Report Documentation Page

Form Approved
OMB No. 0704-0188

Public reporting burden for the collection of information is estimated to average 1 hour per response, including the time for reviewing instructions, searching existing data sources, gathering and maintaining the data needed, and completing and reviewing the collection of information. Send comments regarding this burden estimate or any other aspect of this collection of information, including suggestions for reducing this burden, to Washington Headquarters Services, Directorate for Information Operations and Reports, 1215 Jefferson Davis Highway, Suite 1204, Arlington VA 22202-4302. Respondents should be aware that notwithstanding any other provision of law, no person shall be subject to a penalty for failing to comply with a collection of information if it does not display a currently valid OMB control number.

| | | | | | |
|--|------------------------------------|--|----------------------------|---------------------|---------------------------------|
| 1. REPORT DATE 01 DEC 2002 | 2. REPORT TYPE N/A | 3. DATES COVERED - | | | |
| 4. TITLE AND SUBTITLE Direct Path Fluctuations Due to Shallow Water Volume Variability | | 5a. CONTRACT NUMBER | | | |
| | | 5b. GRANT NUMBER | | | |
| | | 5c. PROGRAM ELEMENT NUMBER | | | |
| 6. AUTHOR(S) | | 5d. PROJECT NUMBER | | | |
| | | 5e. TASK NUMBER | | | |
| | | 5f. WORK UNIT NUMBER | | | |
| 7. PERFORMING ORGANIZATION NAME(S) AND ADDRESS(ES) Department of Physics, Naval Postgraduate School, Department of Oceanography, Naval Postgraduate School, and Applied Physics Lab, University of Washington, Seattle, WA | | 8. PERFORMING ORGANIZATION REPORT NUMBER | | | |
| 9. SPONSORING/MONITORING AGENCY NAME(S) AND ADDRESS(ES) | | 10. SPONSOR/MONITOR'S ACRONYM(S) | | | |
| | | 11. SPONSOR/MONITOR'S REPORT NUMBER(S) | | | |
| 12. DISTRIBUTION/AVAILABILITY STATEMENT Approved for public release, distribution unlimited | | | | | |
| 13. SUPPLEMENTARY NOTES Also see: M001452, The original document contains color images. | | | | | |
| 14. ABSTRACT | | | | | |
| 15. SUBJECT TERMS | | | | | |
| 16. SECURITY CLASSIFICATION OF: | | | 17. LIMITATION OF ABSTRACT | 18. NUMBER OF PAGES | 19a. NAME OF RESPONSIBLE PERSON |
| a. REPORT unclassified | b. ABSTRACT unclassified | c. THIS PAGE unclassified | UU | 23 | |

Introduction

- During two, 24-hour periods of the ECS experiment, Peter Dahl's group deployed a source and two sub-arrays at close range (~500m). The source transmitted short duration pulses at frequencies 4, 8, 16, and 20 kHz. The arrival structure of these pulses sometimes allowed for propagation path discrimination, i.e. the direct water-bourne path was separable from the surface reflected path, which was separable from the bottom reflected path, etc.
- Of interest is the spatial (vertical) coherence of the signal after it has interacted with variable features of the environment. The direct path has only interacted with the water column, and so the coherence provides some measure of the water column variability.
- The goal is to provide numerical modeling results of variety of water column perturbations to determine types of variability needed to affect vertical correlation measure. This will be compared to measured data in the near future.

Model

- Monterey-Miami Parabolic Equation (MMPE) model used to compute propagation. Inputs may include range-dependent sound speed profiles, water-sediment and sediment-basement interfaces, and sediment and basement acoustic characterizations.
- Background sound speed profiles input deterministically, based on single CTD measurement during ASI AEX.
- Sound speed variability based on 3 types of perturbations:

- Single sinusoidal (1W) perturbation

$$dc \square B \frac{z}{60} \left(1 - e^{\left(-\frac{(z-70)}{60} \right)} \right) \cos \left(\frac{2pr}{100} \right)$$

- Combination of multiple (5) sinusoidal perturbations

$$dc \square \sum_{i=1}^5 \frac{B}{i} \frac{z}{60} \left(1 - e^{\left(-\frac{(z-70)}{60} \right)} \right) \cos \left(\frac{2pr}{100/i} \right)$$

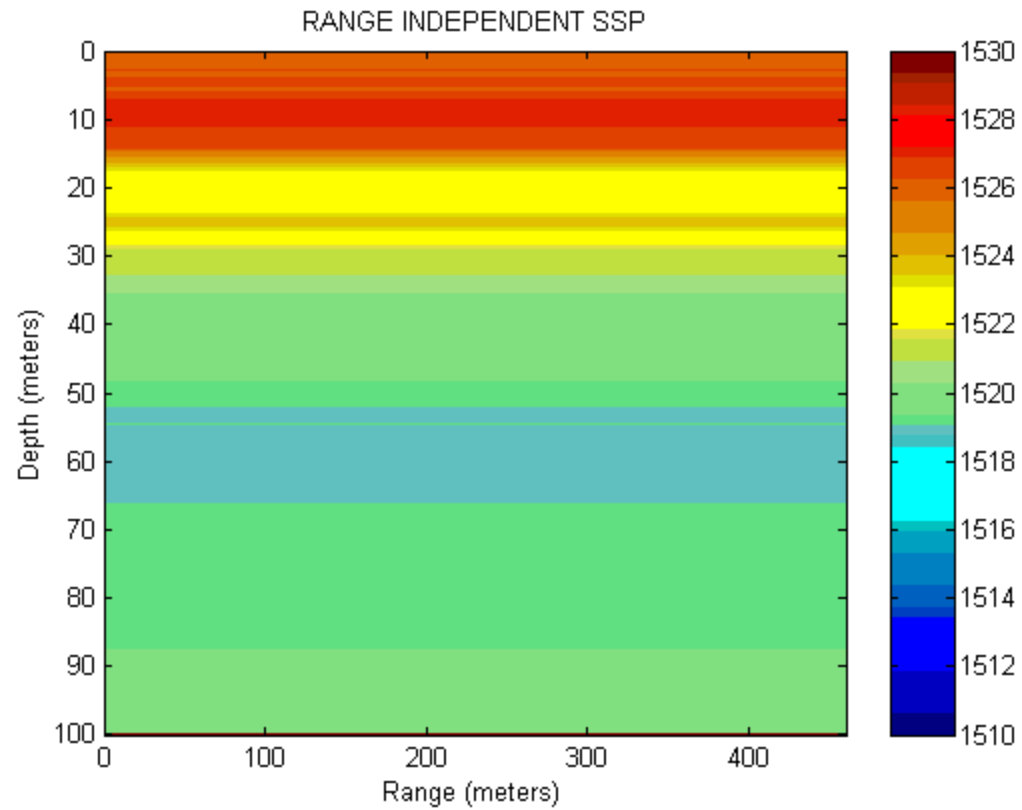
- Small scale, turbulent-like perturbations based on random realization of 2-D variability spectrum

$$W_{dc}(K, M) \square (\Lambda^2 K^2 + M^2)^{-g}$$

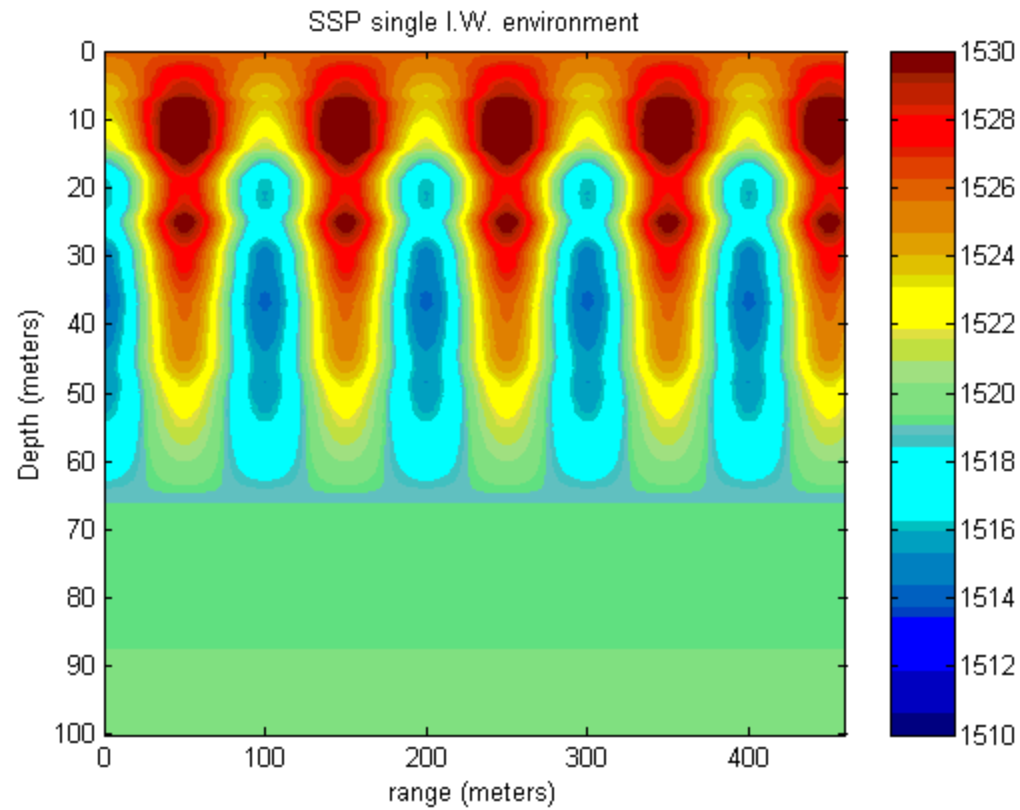
Approach

- Compute broadband arrival time structures based on source at 50m depth. Source transmits frequency spectrum consistent with 2msec CW pulse. Solution stored at range of 460m.
- Arrival structures extracted at depths similar to two sub-arrays used in experiment. Vertical correlations computed over sub-arrays.
- Re-run similar calculations for each perturbation.

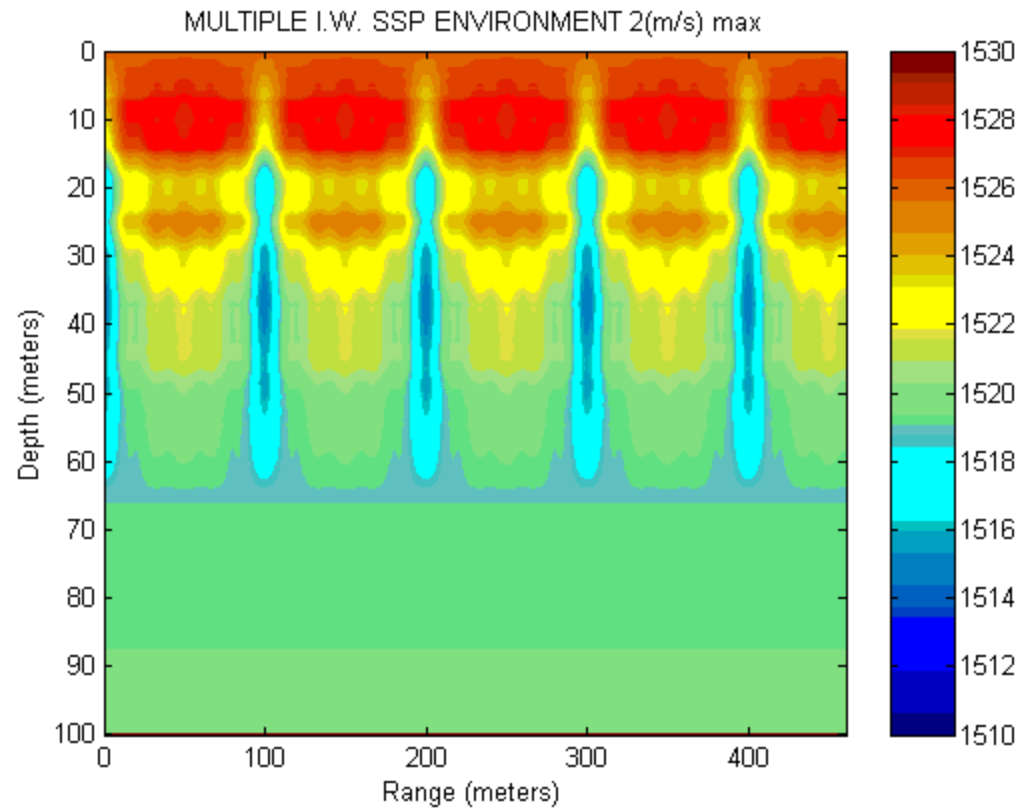
Range - Independent



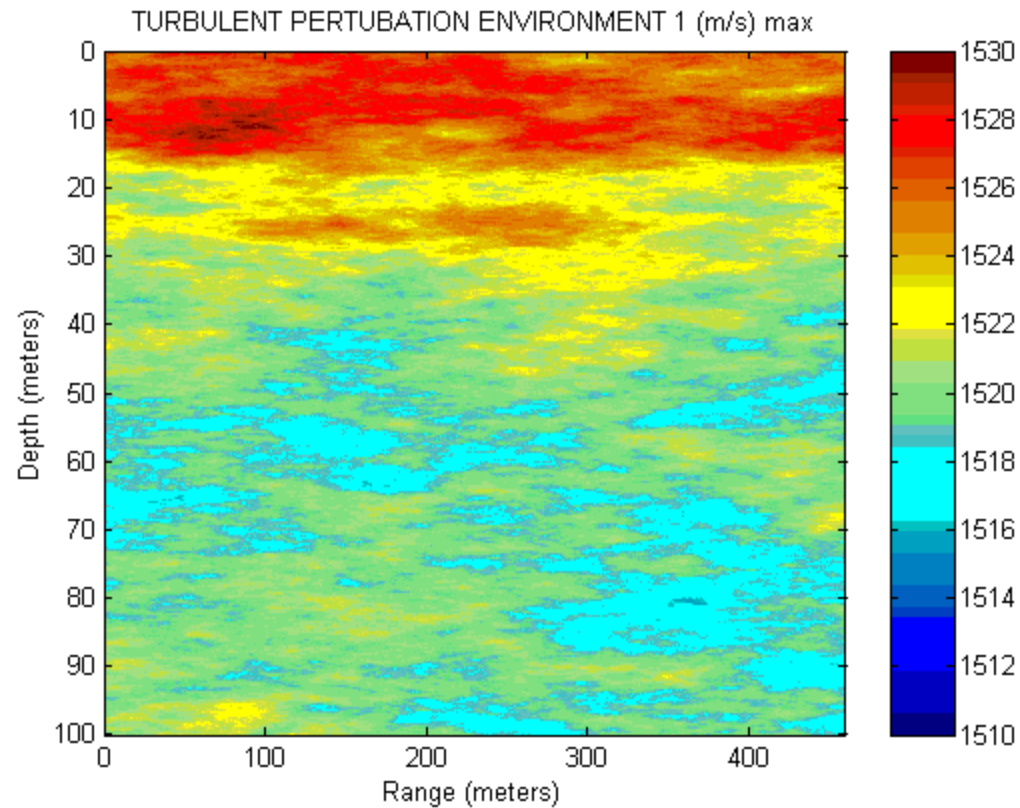
Range-Dependent, Single Sinusoid



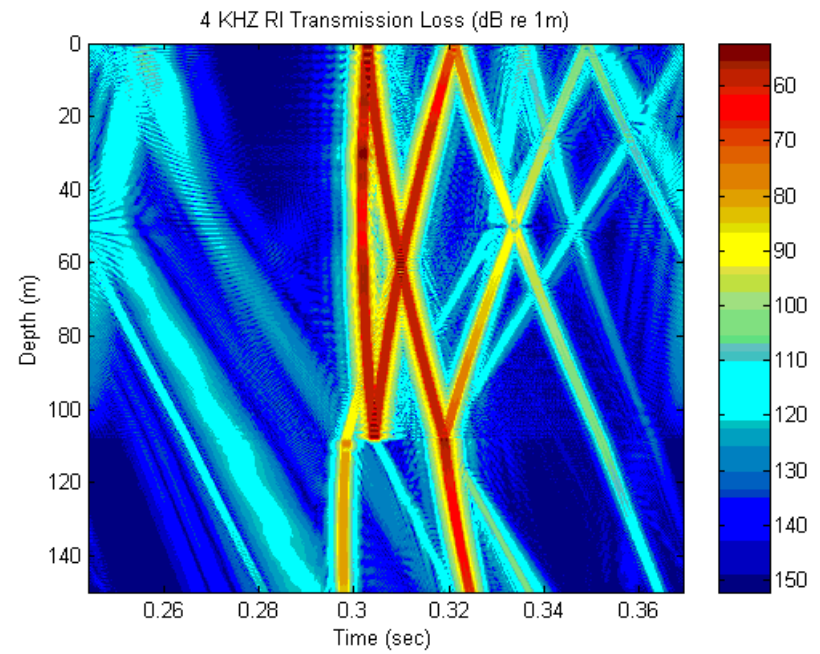
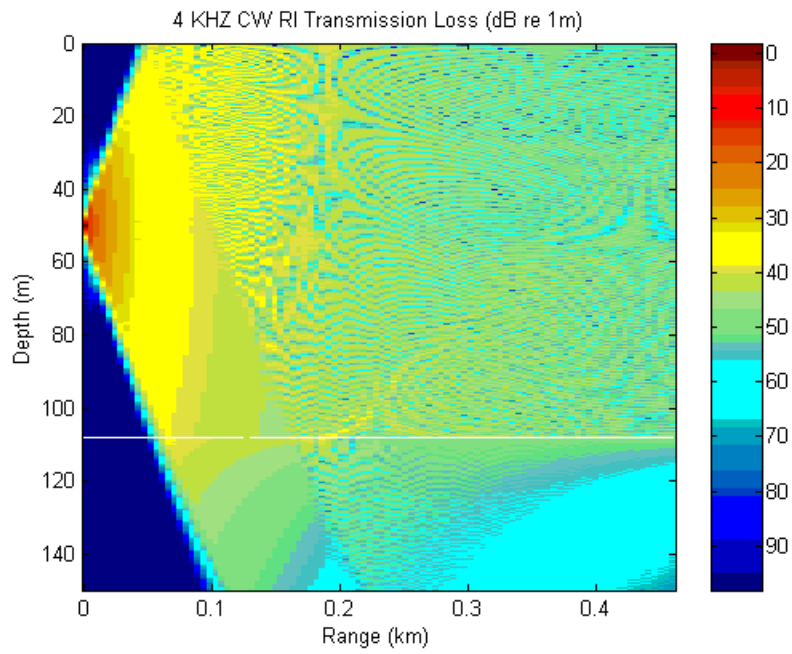
Range-Dependent, Multiple Sinusoids



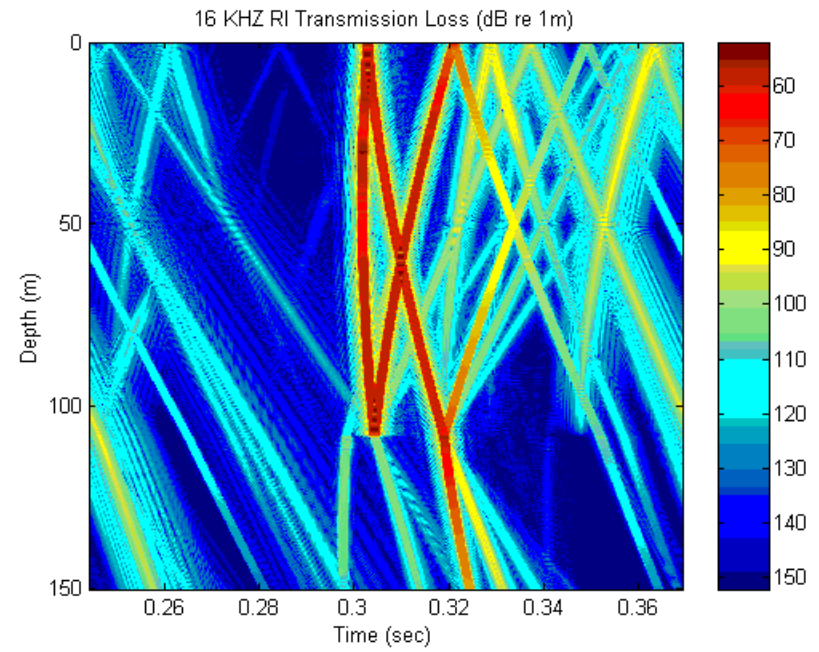
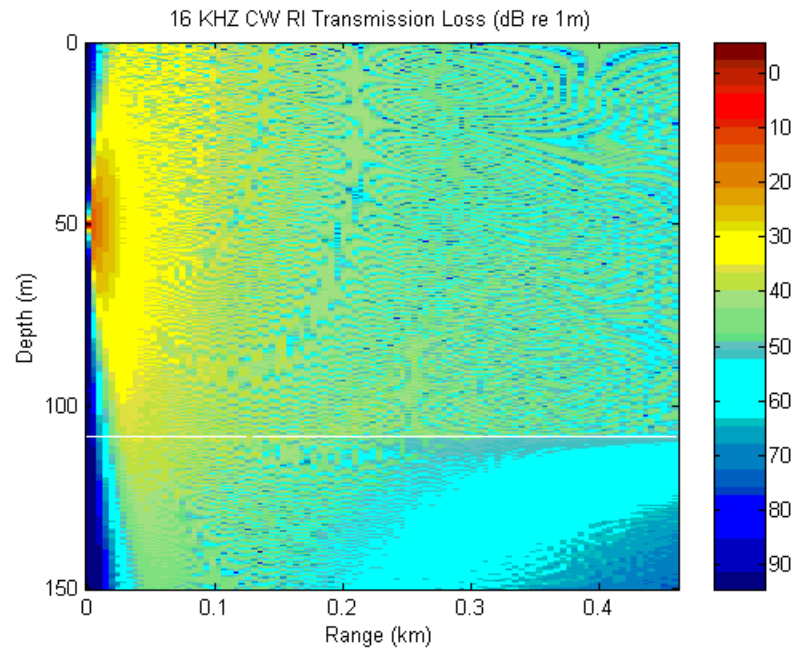
Range-Dependent, Random Perturbations



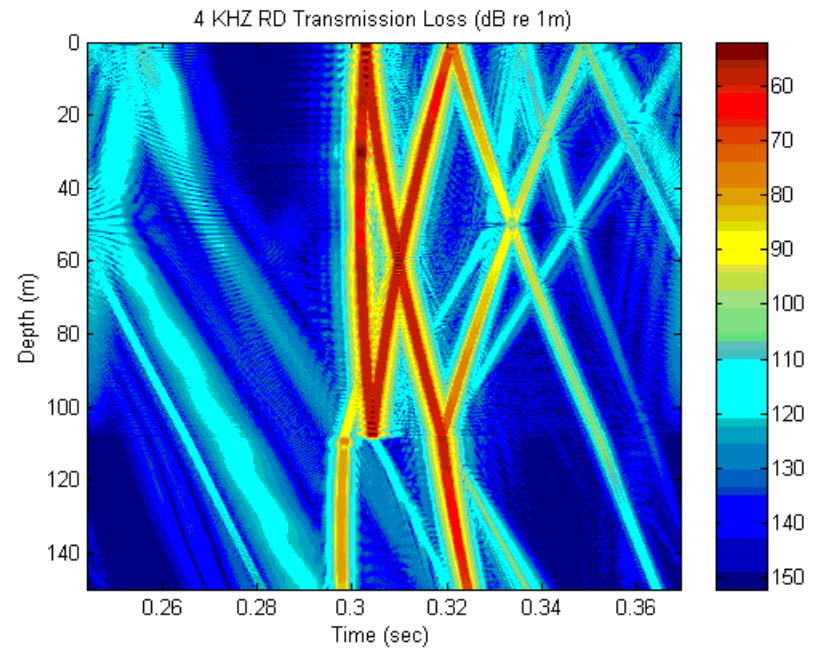
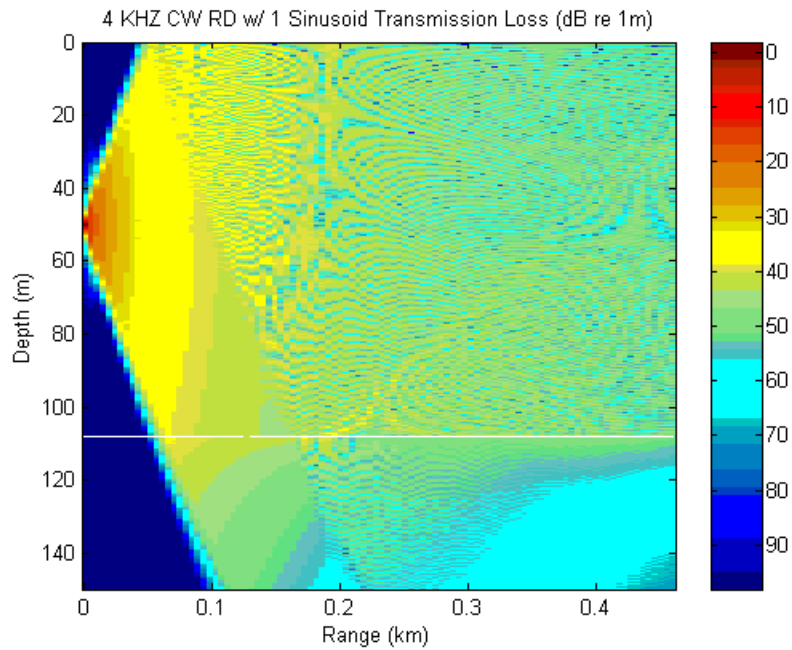
Range-Independent, TL Plots



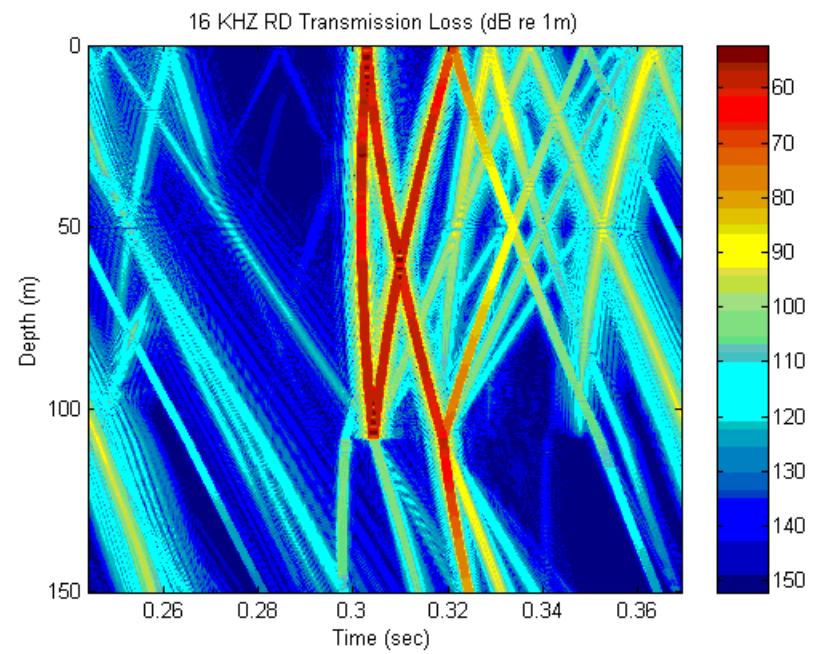
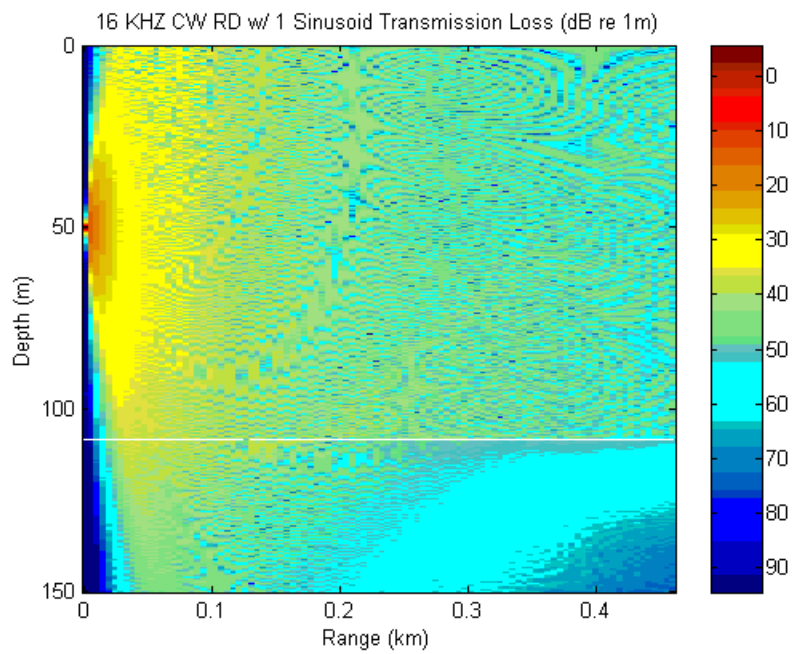
Range-Independent, TL Plots



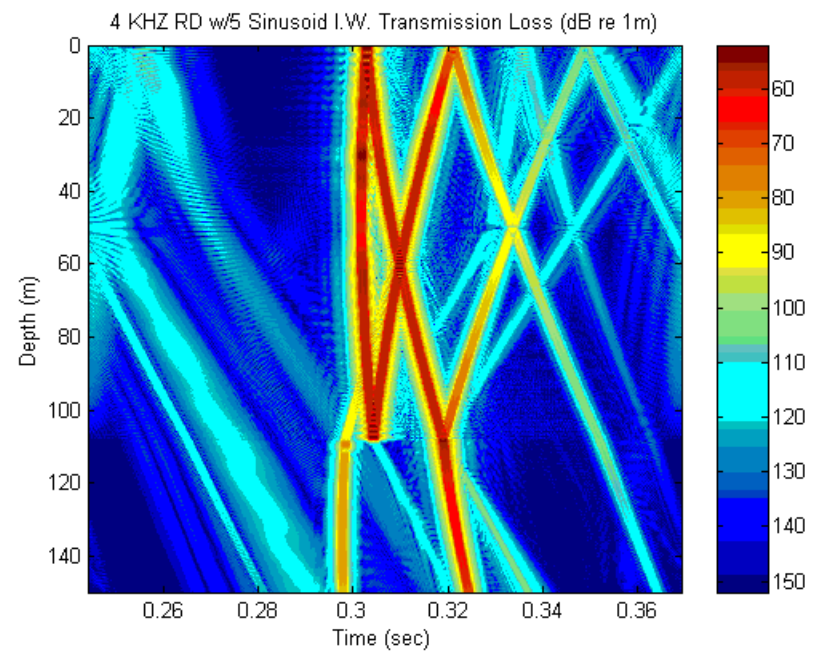
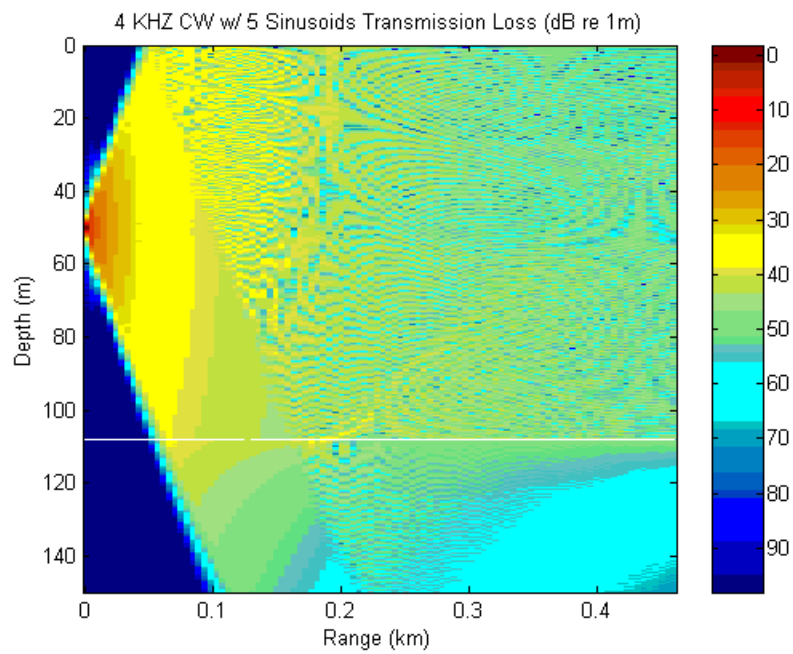
Range-Dependent, Single Sinusoid, TL Plots



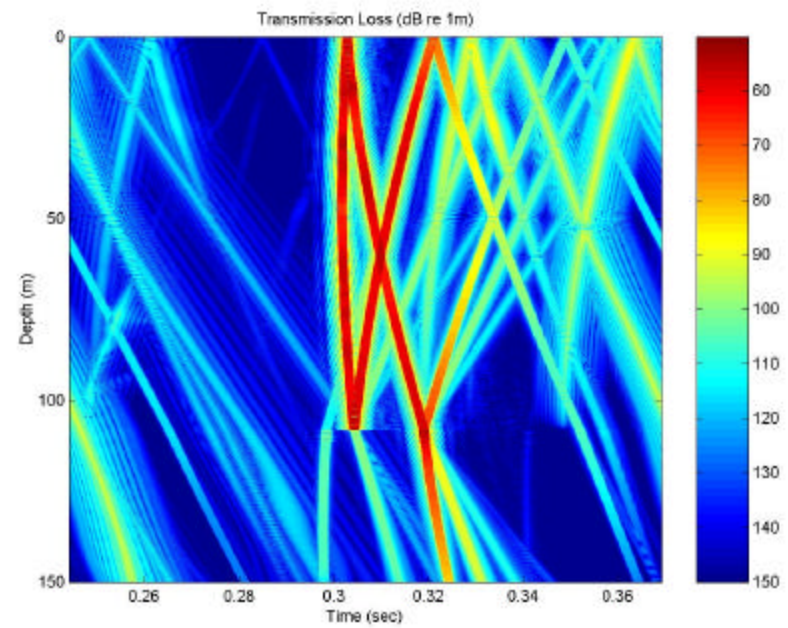
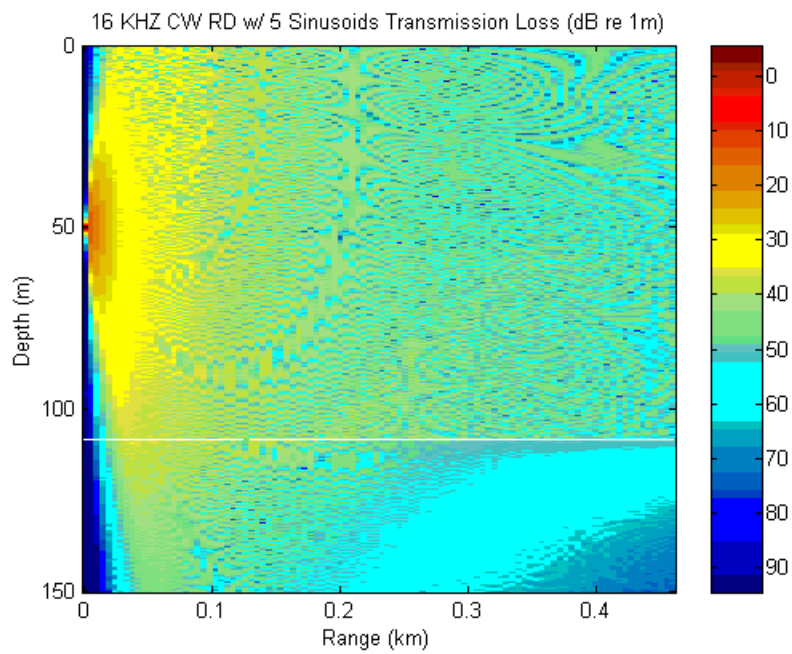
Range-Dependent, Single Sinusoid, TL Plots



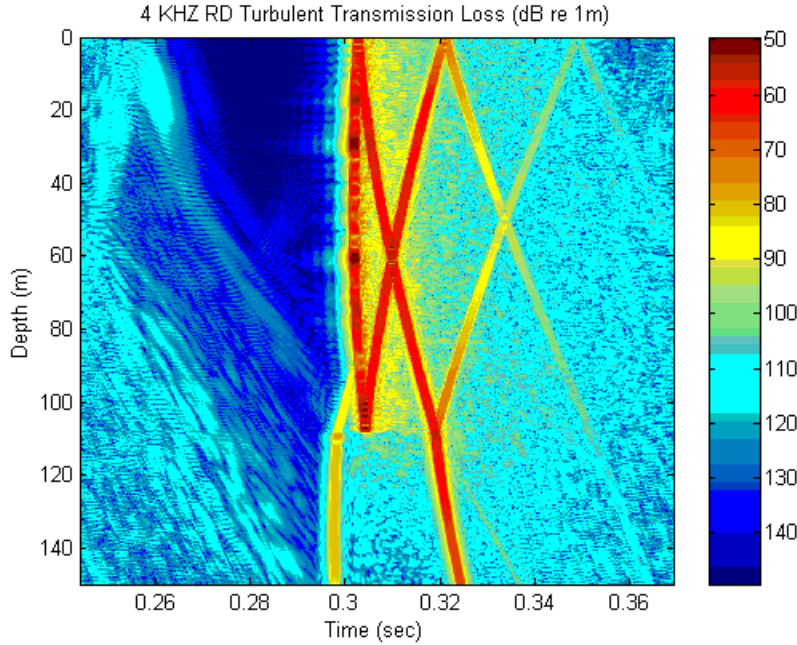
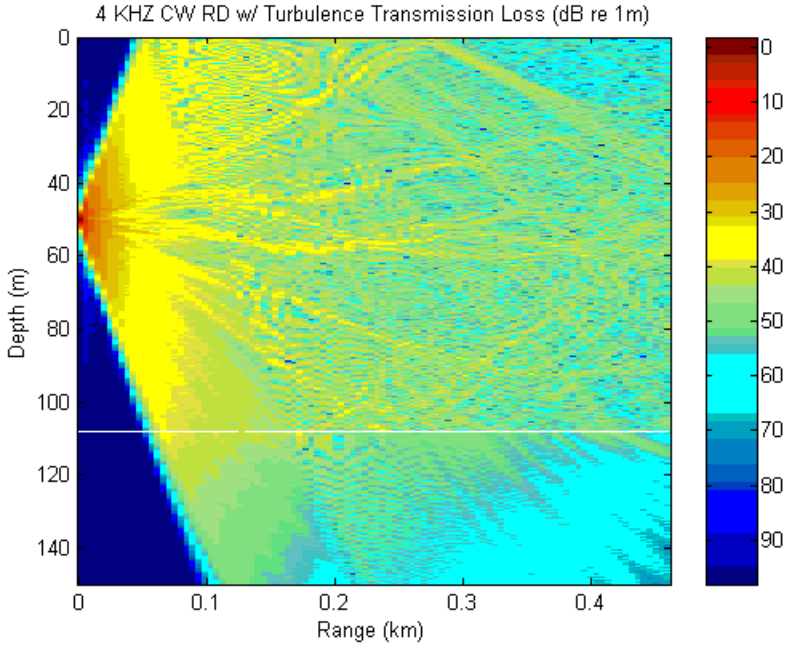
Range-Dependent, Multiple Sinusoids, TL Plots



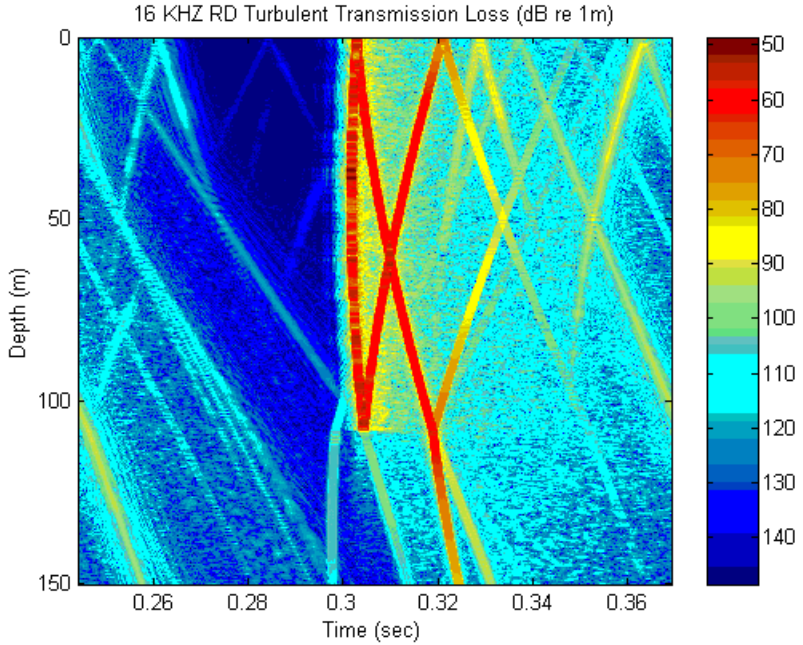
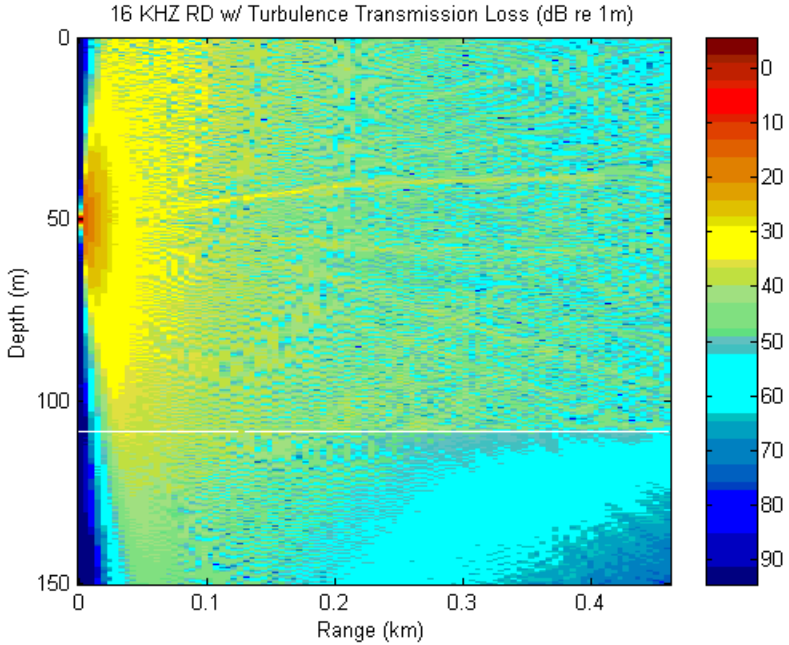
Range-Dependent, Multiple Sinusoids, TL Plots



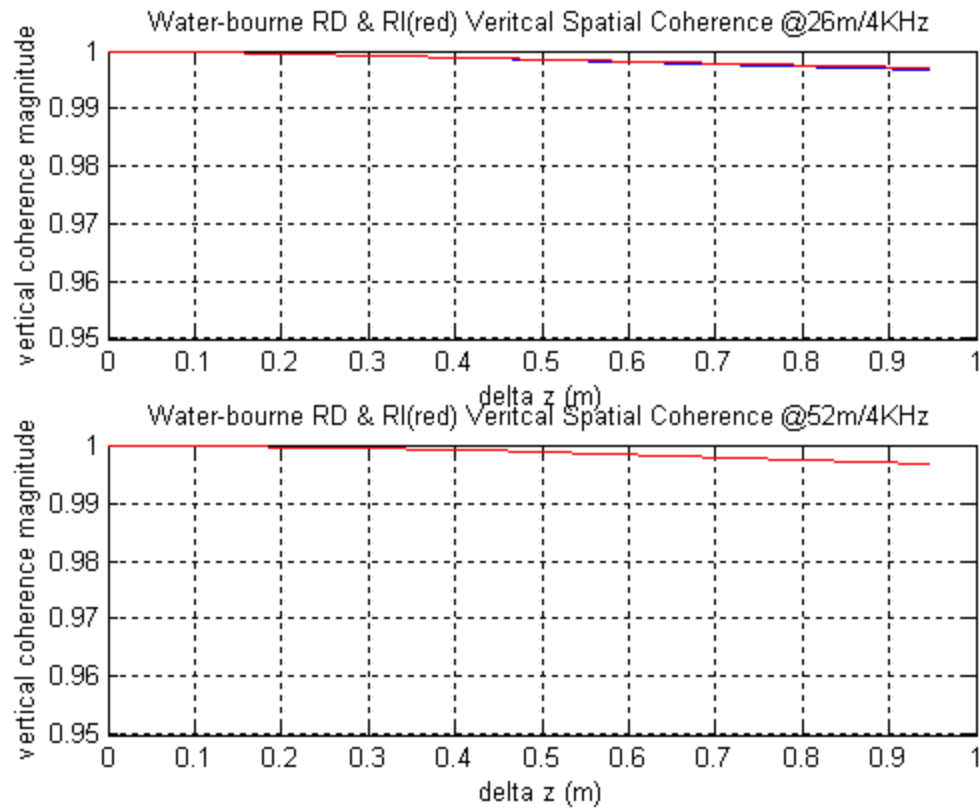
Range-Dependent, Random Perturbations, TL Plots



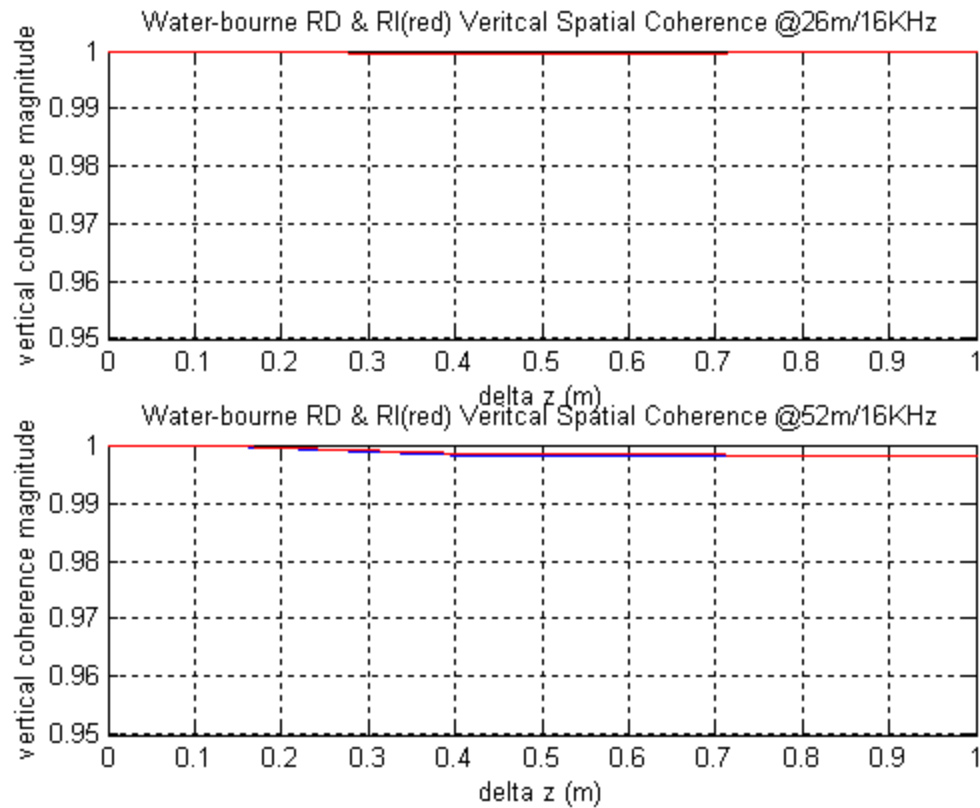
Range-Dependent, Random Perturbations, TL Plots



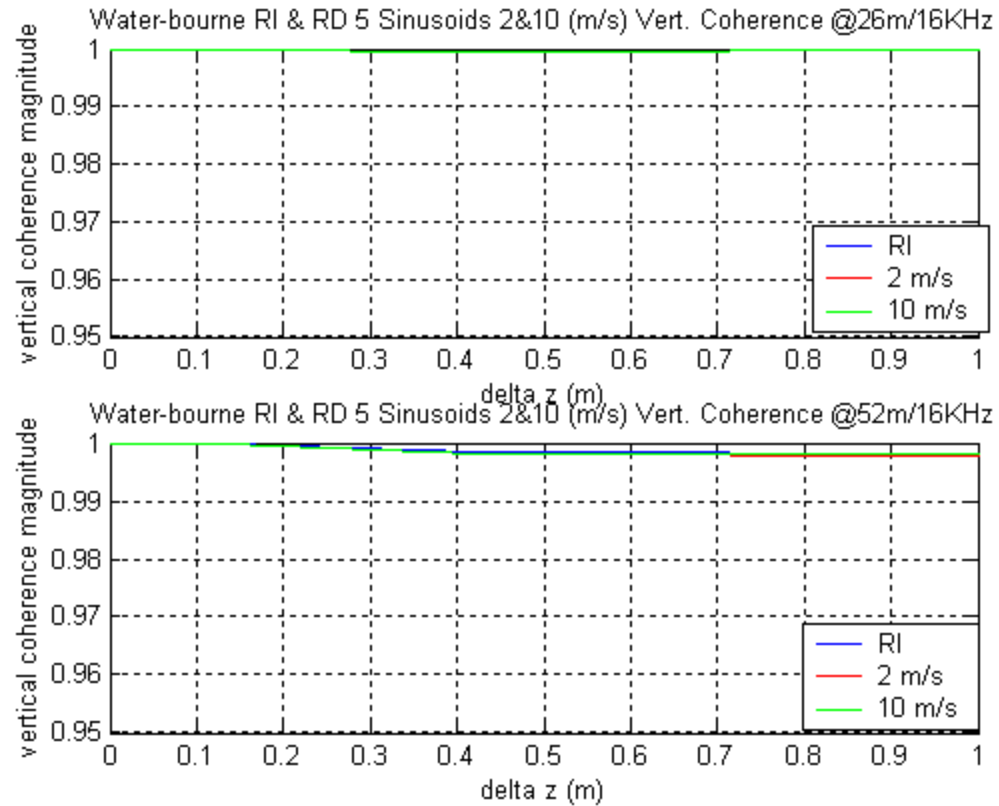
Range-Dependent, Single Sinusoid, Vertical Correlation



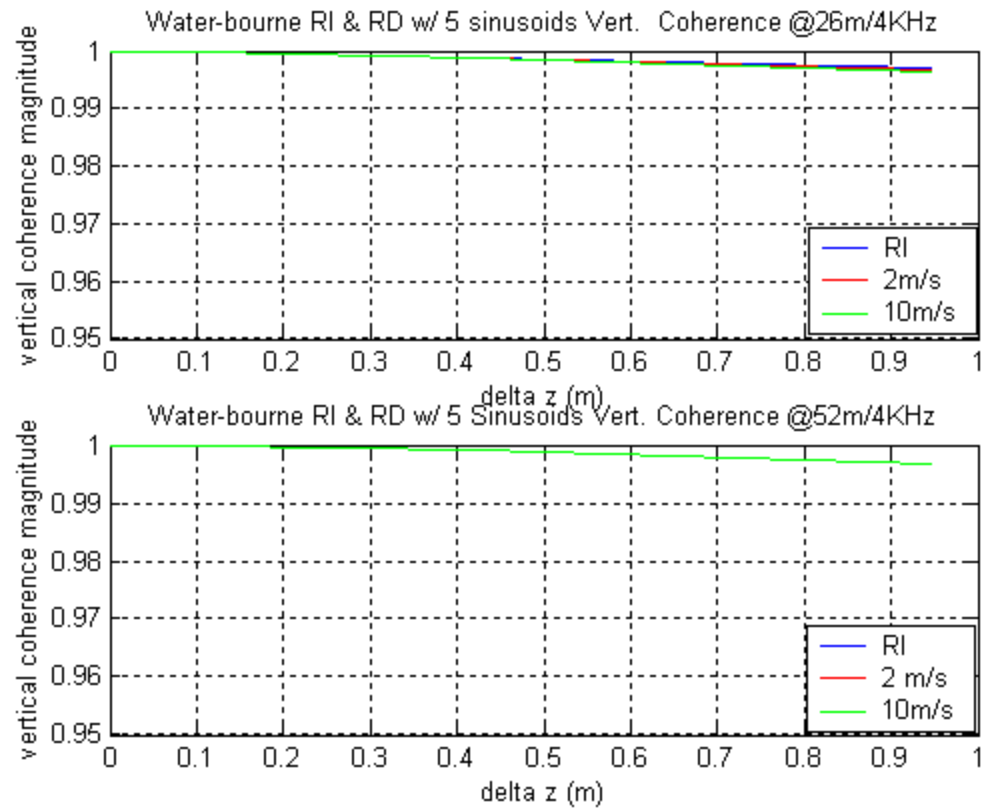
Range-Dependent, Single Sinusoid, Vertical Correlation



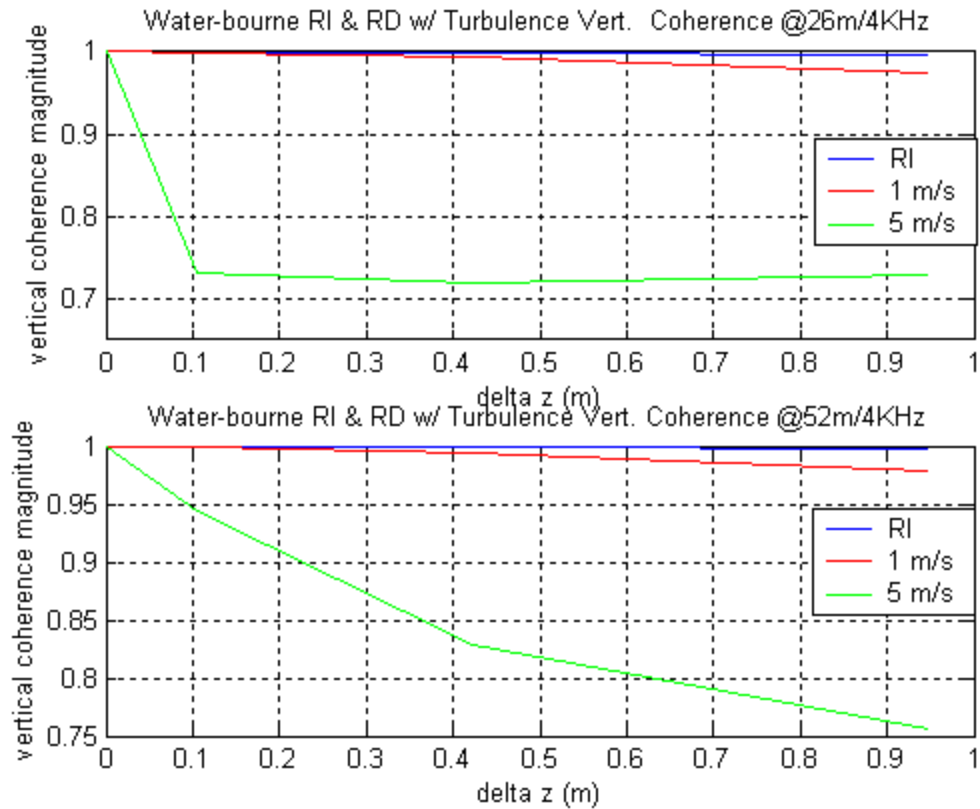
Range-Dependent, Multiple Sinusoids, Vertical Correlation



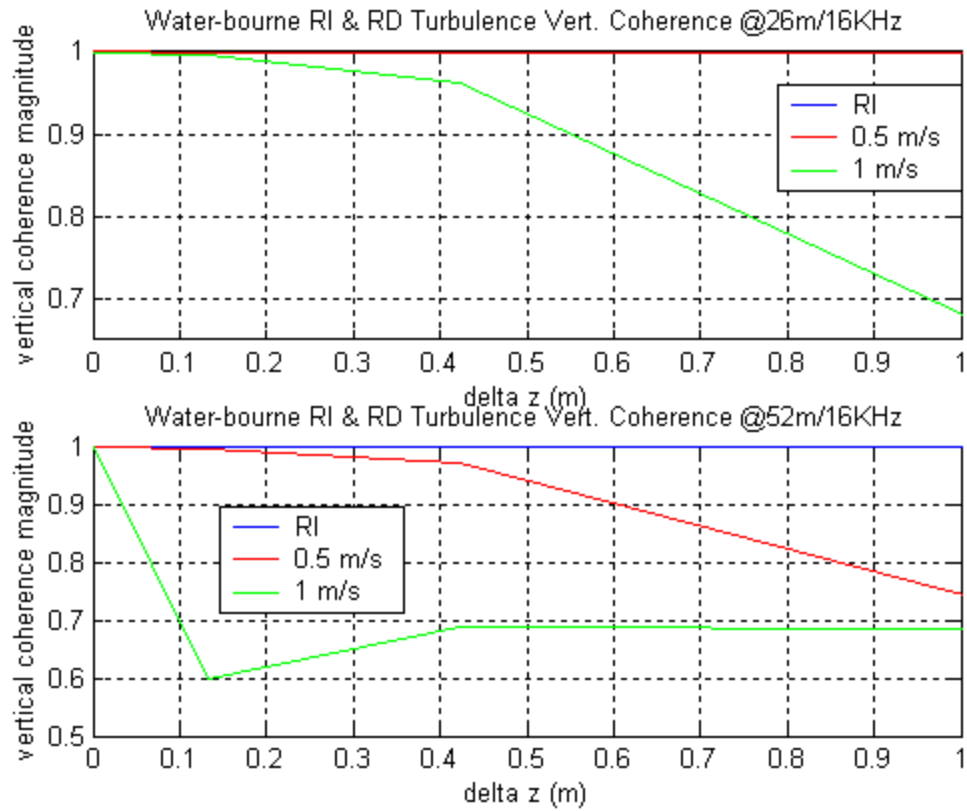
Range-Dependent, Multiple Sinusoids, Vertical Correlation



Range-Dependent, Random Perturbations, Vertical Correlation



Range-Dependent, Random Perturbations, Vertical Correlation



Summary

- Internal wave scale perturbations do not seem to impact vertical correlation of direct path propagation. Small scale turbulent structure appears to be necessary.
- Onset of decorrelation appears rather rapidly with increasing magnitude of turbulent fluctuations. The magnitude of the fluctuations needed for the onset also appears to be frequency dependent.
- This suggests magnitude scale of turbulent volume fluctuations may be estimated by examining onset of significant vertical decorrelation as a function of frequency.
- Future work will incorporate more realistic models of ocean volume turbulence and effects on sound speed. Model results will also be compared with measured ECS data.