

## Simulation Interoperability for the new RNLA C2 WorkStation

**Jeroen Beckers, Wim Huiskamp, Freek-Jan Toevank, Oscar Abbenhuis**

Command & Control and Simulation Division

Operations Research Division

TNO Physics and Electronics Laboratory

P.O. Box 96864

2509 JG The Hague

THE NETHERLANDS

[j.j.beckers@fel.tno.nl](mailto:j.j.beckers@fel.tno.nl)   [huiskamp@fel.tno.nl](mailto:huiskamp@fel.tno.nl)   [toevank@fel.tno.nl](mailto:toevank@fel.tno.nl)   [abbenhuis@fel.tno.nl](mailto:abbenhuis@fel.tno.nl)

### **ABSTRACT**

*The C2 WorkStation (C2WS), developed by the Royal Netherlands Army (RNLA), is a configurable application platform and information system that provides generic functionality to support the Command and Control process. The C2WS supports the users in building and maintaining a Common Operational Picture (COP) in order to enhance the Situational Awareness. The C2WS has conversion modules for ATCCIS and RNLA legacy systems e.g. the Integrated Staff Information System 'ISIS' and the Battlefield Management System BMS.*

*TNO-FEL has recognised an opportunity to support the C2WS assessment activities by ongoing experimental studies on coupling of simulation tools with the C2 architecture. The simulators will be used to provide stimuli (e.g. unit detection or movement) to the C2WS and thus objectively assess the C2-systems involved and facilitate training and education of the users of these C2-systems.*

*Our architectural approach is to provide a software gateway to the modern High Level Architecture (HLA) simulation standard. The link to HLA provides the possibility to connect many modern simulation components to the C2WS architecture. The HLA development process provides a generic approach to simulation interoperability for the C2WS. As a first demonstrator of interoperability between the C2WS and an HLA Simulation system, a Decision Support System (DSS) has been selected. This DSS concentrates on Course of Action (COA) analysis. The COP defined in the C2WS is copied to a planning overlay on the C2WS and transferred to the DSS. The DSS evaluates this input using simulation and the results from the analysis are routed back to the C2WS in the form of a new planning overlay. This overlay can then be evaluated by the C2 operator.*

*Future applications of the addition of Simulation components to the C2WS will be a more extended Decision Support functionality (e.g. route planning, fire support planning, etc.) and the use of simulators for C2 training of commanders.*

*This paper presents an overview of the architecture and the demonstrator under development. Application areas: (1) Test and assessment (as part of the Acquisition process), (2) Training & Instruction, (3) Operations Support.*

**Key Words:** C2 – Simulation Interoperability, Simulator Architecture, HLA Middleware.

# Report Documentation Page

*Form Approved*  
*OMB No. 0704-0188*

Public reporting burden for the collection of information is estimated to average 1 hour per response, including the time for reviewing instructions, searching existing data sources, gathering and maintaining the data needed, and completing and reviewing the collection of information. Send comments regarding this burden estimate or any other aspect of this collection of information, including suggestions for reducing this burden, to Washington Headquarters Services, Directorate for Information Operations and Reports, 1215 Jefferson Davis Highway, Suite 1204, Arlington VA 22202-4302. Respondents should be aware that notwithstanding any other provision of law, no person shall be subject to a penalty for failing to comply with a collection of information if it does not display a currently valid OMB control number.

1. REPORT DATE <b>00 DEC 2003</b>	2. REPORT TYPE <b>N/A</b>	3. DATES COVERED <b>-</b>			
4. TITLE AND SUBTITLE <b>Simulation Interoperability for the new RNLA C2 WorkStation</b>		5a. CONTRACT NUMBER			
		5b. GRANT NUMBER			
		5c. PROGRAM ELEMENT NUMBER			
6. AUTHOR(S)		5d. PROJECT NUMBER			
		5e. TASK NUMBER			
		5f. WORK UNIT NUMBER			
7. PERFORMING ORGANIZATION NAME(S) AND ADDRESS(ES) <b>Command &amp; Control and Simulation Division Operations Research Division TNO Physics and Electronics Laboratory P.O. Box 96864 2509 JG The Hague THE NETHERLANDS</b>		8. PERFORMING ORGANIZATION REPORT NUMBER			
9. SPONSORING/MONITORING AGENCY NAME(S) AND ADDRESS(ES)		10. SPONSOR/MONITOR'S ACRONYM(S)			
		11. SPONSOR/MONITOR'S REPORT NUMBER(S)			
12. DISTRIBUTION/AVAILABILITY STATEMENT <b>Approved for public release, distribution unlimited</b>					
13. SUPPLEMENTARY NOTES <b>See also ADM001657., The original document contains color images.</b>					
14. ABSTRACT					
15. SUBJECT TERMS					
16. SECURITY CLASSIFICATION OF:			17. LIMITATION OF ABSTRACT <b>UU</b>	18. NUMBER OF PAGES <b>32</b>	19a. NAME OF RESPONSIBLE PERSON
a. REPORT <b>unclassified</b>	b. ABSTRACT <b>unclassified</b>	c. THIS PAGE <b>unclassified</b>			

### 1.0 INTRODUCTION

This paper addresses the approach used by TNO-FEL to develop and demonstrate concepts for interoperability between C2 system and Simulations. Simulation interoperability for C2 systems enables applications in training of army staff officers, operations support and procurement, assessment and evaluation of C2 systems. The project is aimed specifically at the C2 Workstation (C2WS), a new system for the Royal Netherlands Army (RNLA), which is in an early stage of its development.

The requirements for the design of the C2-Simulation interoperability are: flexibility, scalability, robustness and compliancy to international standards.

As a first demonstrator of interoperability between the C2WS and an HLA (High Level Architecture) based Simulation system, a Decision Support System (DSS) was chosen, which concentrates on Course of Action (COA) analysis. The DSS analyses plans, prepared on the C2WS, using simulation and results from the analysis are routed back to the C2WS as a new planning overlay, for evaluation by the C2 operator.

The next section addresses the need for interoperability and the general concept of coupling C2 systems to Simulations. Section 3 explains the interoperability approach followed for the C2WS; section 4 discusses the High Level Architecture which has become the *interoperability standard* used in the Simulation domain. The remaining sections discuss the system architecture, implementation issues and some preliminary results and conclusions of this project.

### 2.0 LINKING C2 SYSTEMS TO SIMULATION MODELS

Linking C2 systems to Simulation systems has many potential applications:

- Simulation systems can stimulate the C2 system by providing data that simulates the 'real-world'. This information will now appear to have been received from peer C2 systems. In this way a simulated COP (Common Operational Picture) is created that is based on a simulation scenario. Applications of this technique are: assessment of C2 systems (performance, user interface etc.), assessment of C2 operator capabilities or even training of C2 operators.
- The simulation can provide the C2 operator with operational decision support by executing 'what-if' scenarios. These scenario's can support the operator in his decision making process (e.g. mission planning or assessment of alternative COA's).
- New or experimental parts for an existing C2 system can be evaluated before purchase or even before development of the component by replacing an existing component of the C2 system with an embedded simulation. Simulation systems can be 'initialised' from the existing COP in the C2 system and a simulation run can be started based on this information, assessing what-if scenarios.

The advantage of using simulations as a tool for stimulation of C2 systems, as apposed to 'role players', is that the simulation has a consistent, controlled and reproducible behaviour, which allows objective assessment of system and/or operator performance. TNO-FEL has recognised an opportunity to support the C2WS assessment activities by ongoing experimental studies on coupling of our simulation tools with this C2 architecture. The aim of the research is to develop a flexible and future-proof approach to the C2-Simulation interoperability problem. First we need to clarify what we really mean by 'interoperability'.

Interoperability is the degree to which entities are able to co-operate in achieving a common goal. There are many interpretations of the concept of interoperability between computer systems. It varies from

having a network connection and being able to transfer files (e.g. email) to using exactly the same applications at all systems and completely sharing the information they process. A commonly used form of interoperability is '*information interoperability*', because it offers optimal connectivity between systems, while preserving maximum independence. Information interoperability is defined as the ability of systems to automatically exchange and interpret information that is common to those systems [Ref 1].

In this paper we focus on information interoperability that is achieved by the *automated exchange and interpretation of structured information* between systems. With minimum user intervention, C2 systems and Simulation systems must be able to *automatically* interchange certain information and utilise that for further processing. This means that the information must be *structured*, because this enables functionality such as distribution by subscription on certain topics, presentation of information and filtering by specific selection criteria. The emphasis here lies on the exchange of *information* (rather than 'free format' databits), preserving its meaning, integrity and context. Structured information is described formally by a '*Datamodel*'. The datamodel thus represents the foundation for information interoperability.

In the most common case where many systems have to exchange information, standardisation of a common 'interface' is a key factor to achieve information interoperability. Otherwise, dedicated interfaces are needed between every pair of interconnected systems, leading to an exponential grow of the number of interfaces required. Preferably the exchange should not depend on proprietary products, such as database management systems and communication systems. The key notion for information interoperability is *standardisation*. By having common agreements on which information is exchanged, in what format, and under what conditions, it becomes easier to allow systems of different types to interoperate.

### 3.0 C2WS

The C2WS is a configurable *application platform* and information system that provides generic functionality to support the Command and Control process. The C2WS supports the users in building and maintaining a COP in order to enhance the Situational Awareness.

The C2WS is being developed at the RNLA C2 Support Centre, with cooperation of TNO-FEL. The C2WS system architecture comprises three layers whose basic functionality can be segmented into: presentation services, business services, and data services [Ref. 2].

The **presentation services layer** is responsible for gathering information from the user and presenting information to the user using the services of the business services layer.

The **business services layer** is responsible for end-to-end *business transactions* such as maintaining *roles*, *contexts* and *business objects* and the logic that applies within these concepts.

The **data services layer** is responsible for storage, retrieval, maintenance and integrity of data. The data services layer is also in charge of publishing as well as subscribing and listening to data on the network.

The information exchange in the C2WS environment is based on commercial of the shelf publish/subscribe services and a tailored information exchange language [Ref. 3]. The information exchange language is based on the RNLA C3I Architecture (C3IA) Information Model (C3IA-IM) for C2 applications within the RNLA. C3IA is more generic than the fixed set of descriptive attributes of ATCCIS.

The C2WS has conversion modules for RNLA legacy systems such as the Integrated Staff Information System 'ISIS' and the Battlefield Management System 'BMS'. A translator service shall be made available for translating C3I information to proprietary systems such as the German C2 system 'HEROS'.

## Simulation Interoperability for the new RNLA C2 WorkStation

At the time of writing, the C2WS supports GIS functionality for placing units and lines/areas on the map. The network functionality is partly implemented, for example updates of the COP for a certain 'context' can be exchanged between different C2WSs. However a means for a new C2WS to hook into the network and receive the full current COP has not yet been implemented.

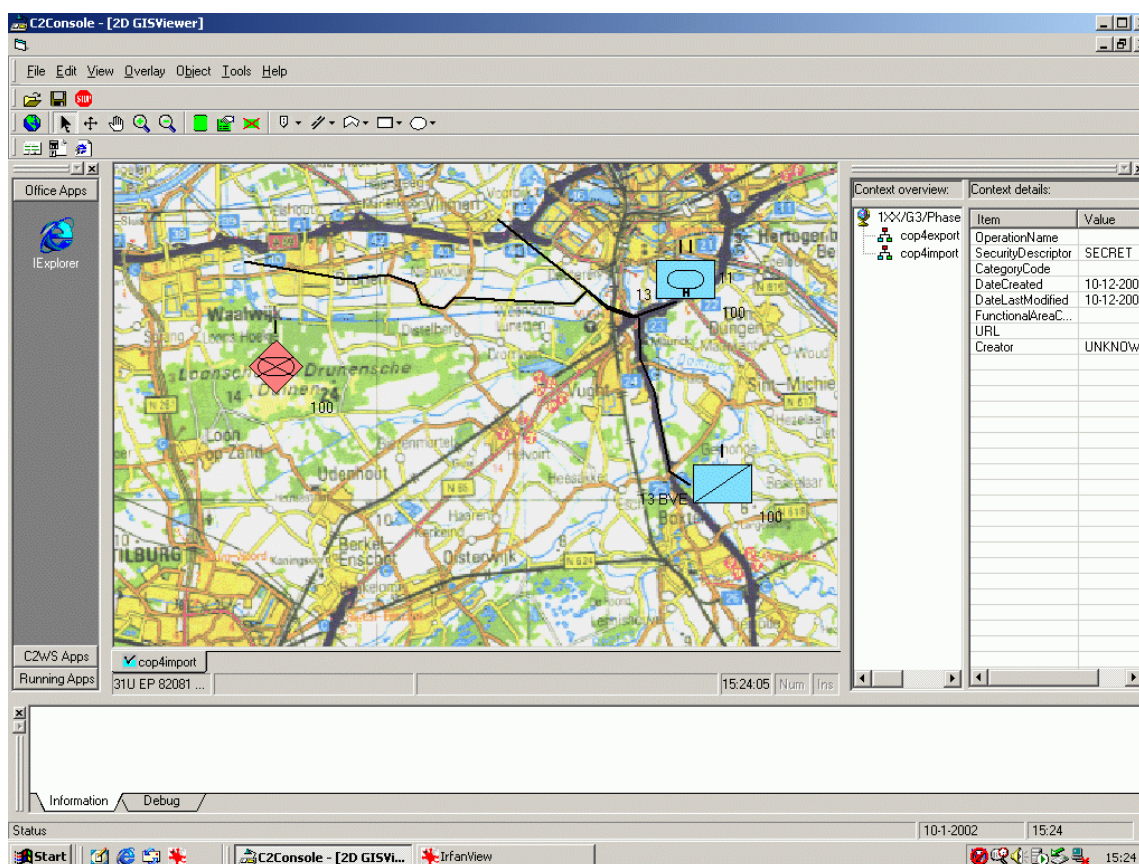


Figure 1: The RNLA C2 WorkStation (Pre-Released Prototype, Sept 2001).

### 4.0 HLA

The High Level Architecture (HLA) is an architecture for reuse and interoperation of simulations [Ref. 4, 5, 6]. The HLA is based on the premise that no single simulation can satisfy the requirements of all uses and users. An individual simulation or set of simulations developed for one purpose can be applied to another application under the HLA concept of the Federation: a composable set of interacting simulations [See Figure 2].

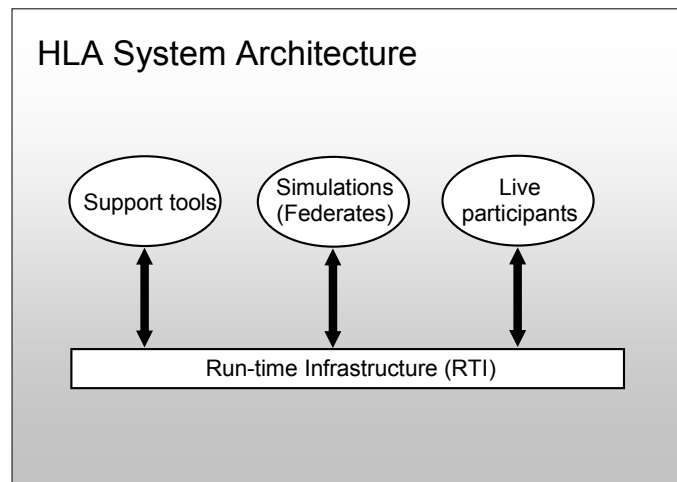


Figure 2: HLA Federation.

The intent of the HLA is to provide a structure that will support reuse of capabilities available in different simulations, ultimately reducing the cost and time required to create a synthetic environment for a new purpose and providing developers the option of different implementations within the framework of the HLA.

The HLA provides the specification of a common technical architecture for use across all classes of simulations: (a) *Virtual*: “Real people operating simulated equipment”, (b) *Constructive*: “Simulated people operating simulated equipment” and (c) *Live*: “Real people operating real equipment on an instrumented training range”. HLA provides the structural basis for simulation interoperability. The baseline definition of the HLA includes the HLA Rules, the HLA Interface Specification (IFSpec), and the HLA Object Model Template (OMT). The HLA interface specification defines many services that HLA provides to the application. These services include Object Management (publish/subscribe) and Time Management (i.e. synchronisation between distributed applications). The Federation Object Model (FOM) is the datamodel of the HLA Federation. The OMT is the standard format that is used in HLA documentation.

The HLA does not prescribe a specific implementation, nor does it mandate the use of any particular software or programming language. Over time, as technology advances become available, new and different implementations will be possible within the framework of the HLA. In February 1998, version 1.3 of the HLA specification was adopted by the US Defense Modelling and Simulation Office (DMSO) and in September 2000 it has been accepted as IEEE Standard 1516 for simulation interoperability. The HLA is a standard for use in the US Department of Defense and within NATO (NATO MSMP 1998). Development of a generic coupling between C2 systems and HLA thus provides the possibility to connect modern simulation components to the C2 environment.

One of the main components of HLA is the Run-Time Infrastructure (RTI). The RTI implements the HLA IFSpec and allows the user to invoke the RTI services to support run-time interactions among Federates and to respond to requests from the RTI. This interface is implementation independent and is independent of the specific object models and data exchange requirements of any Federation. At TNO-FEL we developed an HLA based middleware layer, called the Runtime Communication Infrastructure (RCI) [Ref. 7] which supports HLA. The RCI shields the developer from many intricate details concerning the usage of the HLA-RTI, including Data Distribution Management (DDM) [Ref. 4, 5, 6], when developing either a Component or a Federate. The RCI includes a C++ code-generator to translate the required HLA-OMT descriptions into easily accessible object-oriented classes. The C2-Sim coupling approach described here is based on our RCI concept.

## 5.0 C2WS-BRIDGE FEDERATION

The first demonstration target of our project was to achieve interoperability between the C2WS and an HLA Simulation system. More specifically, the use of simulation as a Decision Support System (DSS), which concentrates on Course of Action (COA) analysis. The COP defined in the C2WS is copied to a planning overlay on the C2WS and transferred to the DSS. The DSS analyses this input through simulation and results from the analysis are routed back to the C2WS as a new planning overlay available for evaluation by the C2 operator. The Federation that was developed for this demonstration is named the ‘C2WS-Bridge Federation’ and consists of the following Federates:

- FedMan, this (optional) Federate was developed by TNO and is used as Federation Manager. It has online capabilities to initialise, monitor, start, stop, pause and abort the whole system. The Federation Manager also has the ability to monitor the activities of all participants and systems and take appropriate (planned & unplanned) action, to ensure a successful completion of the exercise;
- Decision Support Federate. This Federate is based on the ‘Bridge’ constructive combat simulation model developed by TNO-FEL for the RNLA. It is responsible for the simulation of ground and air brigade/division mobile operations. The Federate was modified to handle the input from the C2WS and deal with the required Objects and Interactions.

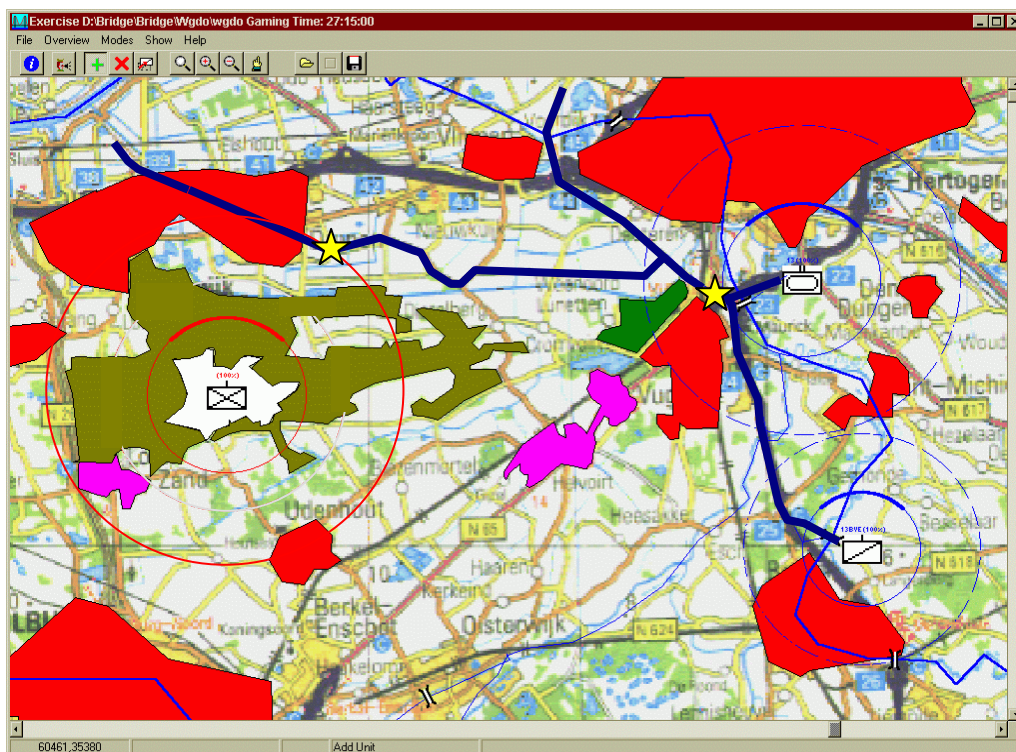


Figure 3: The DSS Tool Bridge (TNO-FEL Prototype).

- Stealth Federate, a 3D viewer into the virtual environment. This (optional) Federate is based on the available TNO-FEL Stealth from TNO-FEL’s Electronic Battlespace Facility (EBF). The Stealth is interoperable with the Federation through a ‘DIS/HLA Gateway’ and thus demonstrates our capability to deal with ‘legacy’ DIS Federates;
- C2WS Federate, one or more (unmodified) C2WS applications (C2 GIS) manned by their regular RNLA operators. See figure 1.

The C2WS-Bridge Federation was able to adopt the DiMuNDS 2000 FOM [Ref. 8] (see next section).

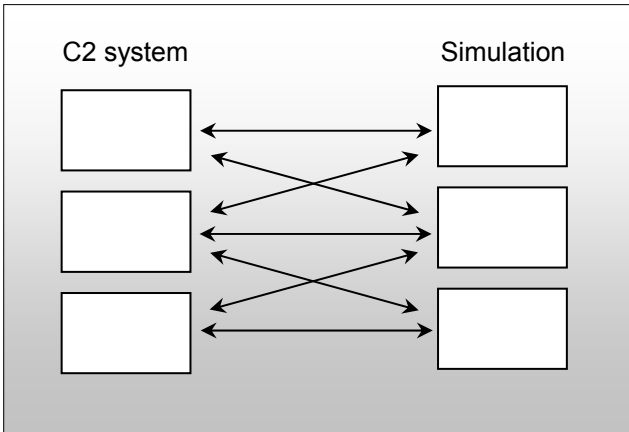


Figure 4: Tailor Made Connections. (Not Fully Interconnected)

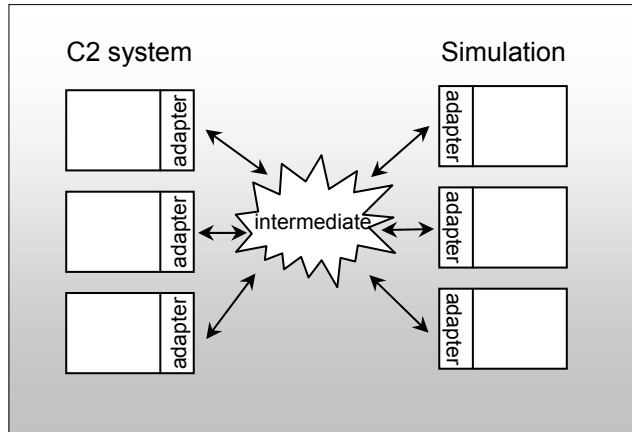


Figure 5: Connections using an Intermediate Layer. (Fully Interconnected)

## 6.0 BRIDGING THE GAP

Previous attempts to couple C2 systems with simulations were often ad-hoc and resulted in tailor-made connections for every specific combination of C2 systems and simulation models. When one of the systems needs to be connected to another system or simulation, a new connection needs to be developed. This approach means a lot of work for both the C2-System and the simulation model, see Figure 4.

A more flexible approach is the use of an intermediate layer as show in Figure 5.

Once a system or simulation has a (tailor made) adaptor for the intermediate layer, the system can be connected to other systems or simulations without any additional work on the other sides.

The approach that was followed to achieve C2WS-Simulation interoperability resembles the ‘intermediate layer’ solution, however with an important difference: both the C2WS systems and the Simulation systems already support interoperability within their own domain.

The C2-System uses a commercial of the shelf product, TIB/Rendezvous (TIB/RV) from Tibco, to exchange information. The simulation systems use the HLA interoperability standard. A ‘gateway’ connects TIB/RV on one side to HLA on the other side (see Figure 6).

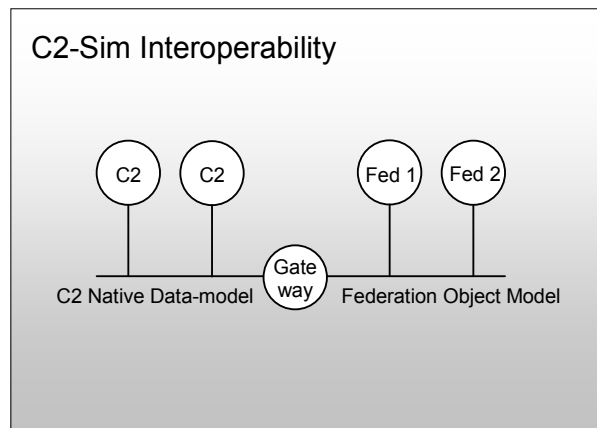


Figure 6: C2-Simulation Datamodel Interoperability.

## Simulation Interoperability for the new RNLA C2 WorkStation

In addition to interoperability at the technical level (protocols, networks etc), we also need to develop the information interoperability: bring the Datamodels inline and provide a two-way mapping for all relevant attributes (see Figure 6). HLA systems are connected to each other in a Federation and define their communication via a Federation Object Model (FOM). The FOM has to be agreed upon between the systems that need to be connected. For the C2-Simulation system a C2WS-Bridge Federation has been designed together with an initial FOM based upon the FOM used previously in the NATO DIMUNDS 2000 demonstration [Ref. 8].

This FOM describes four generic objects which are:

- Weather,
- Stationary,
- Mobile and
- StationaryMultiLocation.

The information that is exchanged via the FOM consists amongst other things of the position of the object and depending on the object information, for example status and speed. It is often impossible to directly map the information exchanged between C2-systems onto the FOM.

**Table 1: Schematic DiMuNDS 2000 FOM Datamodel.**

Object	Specialisation	Specialisation	Specialisation
Weather			
Stationary	Seaport		
	Pumping station		
	C2-centre		
	Corridor		
	Airbase		
	Depot radarsite		
	Bridge	CivilBridge	
		Combatbridge	
StationaryMulti Location	Special area		
	Minefield		
	Non lethal obstacle		
Mobile	Sea	Surface	
		Sub-surface	
	Air	Cruise missile	
		Air mission	Fixed-wing
			Helikopter
	Ground	Non-combat	
		Combat service support	
		Engineer	
		Sensor	
		Fire-support	
		Manouvre	
		Airdefence	HiMad
			ShoRad

In most cases it is necessary to combine information from the C2-system in order to get it mapped onto the FOM and vice versa. In an initial quick research the following fields were identified for a unit message that need adaptation before they can be mapped on either the FOM or on the C2 information.

**Table 2: Data Mapping Fields (not exhaustive)**

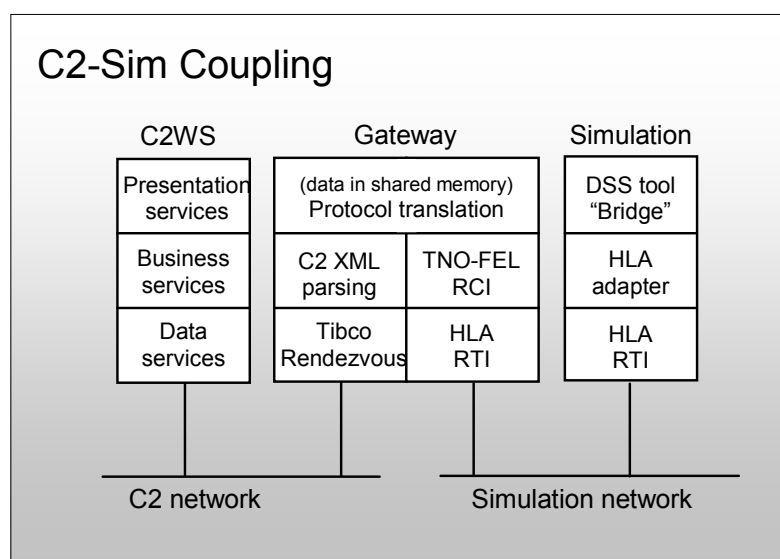
FOM	C2WS
ObjName	Name
PartyNumber	Nationality
Velocity	SpeedQty
Position	Position
Front	BearingAngle

A name in the FOM needed to be restricted to 10 characters, the FOM only knows of four different parties while the C2WS allows many more different nationalities, and the location of a unit in the UTM system of the C2WS needed to be translated into the relative map coordinates used by the FOM. Specific conversions and layout issues had to be resolved and implemented to realise any coupling between the two domains.

## 7.0 TIBCO-HLA GATEWAY

A TIBCO/HLA Gateway was developed for the purpose of incorporating a C2WS in the Federation.

The Gateway (see Figure 7) was implemented using two processes, one attached to the RCI (HLA middleware) and the other attached to TIB/RV (main component of the C2WS interoperability middleware from Tibco). Both sides use a broadcast (publish/subscribe) method to distribute data on the network. TIB/RV listens to messages on the network and places an image of the object/interaction data concerning the C2WS entities (to which a subscription was issued by the Gateway) in shared memory. The RCI process subsequently reads this data from shared memory and maps it onto the HLA-SOM via the RCI middleware. The same holds for communicating data from the HLA Federation to the C2WS world where TIB/RV publishes the object/interaction data received from the Federates in the Federation.



**Figure 7: C2WS Federation with TIBCO/HLA Gateway.**

## Simulation Interoperability for the new RNLA C2 WorkStation

---

The Federation was developed by (loosely) following the Federation Development and Execution Process (FEDEP) [Ref. 6].

The objective of the Federation was defined as:

- Demonstrate interoperability between constructive (wargame) simulations and C2 systems using HLA. The focus of the scenario and the simulation application is on features that are important for Decision Support.

The following documentation is typically produced in the FEDEP:

- *Federation Objectives, Requirements and Conceptual Model*. This provides details for FEDEP steps 1 (*Define federation objectives*) and 2 (*Perform conceptual analysis*). The document describes the statement of 'Federation Objectives', 'Scenario Requirements', 'Conceptual Model' and 'Federation Requirements'. Federation requirements described in the document serve as a vehicle for transforming objectives into functional and behavioural capabilities, and provide a crucial trace-ability link between the Federation objectives and the design implementation. The requirements are derived from the specification of the Federation Objectives and the high-level description of the Scenario.
- *Federation Scenario Document*; this document describes the scenario in full detail, the geographic location of interest, the nature and size of forces, in our total scenario represented by about 60 computer generated forces (CGF) units, the initial positions and the occurring events.
- *Federation Design and Development Document*; this document provides details for FEDEP steps 3 (*Design Federation*) and 4 (*Develop Federation*). This phase of the FEDEP is concerned with the detailed design of the Federation (including mapping of Federation Objectives and Requirements to Federates), the selection of and modification of existing Federates and the development of new Federates. The document describes the results of the selection process, the definition and development of their interactions (laid down in the FOM) and mapping of Federation objects/functionality on Federates. The document also details Federation agreements (e.g. Operating Systems, Tool versions, and co-ordinate systems).
- Documentation supporting step 5 (*Plan, Integrate, and Test the Federation*).
- *Federation Execution and Evaluation Document*; this document provides details for FEDEP step 6 (*Execute Federation and Analyse results*). The document also details hardware and network requirements and organisational aspects (e.g. machines, network port numbers, script and required staff list for rehearsals and executions, list of invited guests).

Inconsistencies in co-ordinate conversion algorithms used by different Federates often pose an additional problem. But in our case, the terrain databases used by constructive Federate (Bridge) on one hand and the C2WS Federate on the other hand, were identical and thus correlated. Only the usual conversion from map-co-ordinates to UTM, used in our FOM (and vice-versa), was called for.

## 8.0 RESULTS

The prototype demonstrator for the C2WS with DSS tool is capable of transferring a COP to the DSS tool. The user can try out several courses of action and transfer the resulting situation back to the C2WS as a planning overlay. The gateway handles a limited set of units and other C2 items, which shall be extended in further versions of the demonstrator.

Due to the early stage of the development of the C2WS, some cumbersome precautions have to be taken when demonstrating the simulation functionality. The updates of the COP from the C2WS are incremental, so only changes are broadcast to other stations. A full COP transfer for when a new C2WS is

added to the network, or in our case, for simulation purposes, has not yet been implemented in the current version.

Concentrating on coupling this RNLA C2 system with a simulation component in such an early stage of its development has resulted in encouraging insights in the possible additional functionality required of the C2WS.

## 9.0 CONCLUSIONS

The demonstration of coupling a C2 system to a simulation tool using HLA is expected to achieve its overall objectives and received positive reactions from its audience. Some lessons learned so far from the project are:

- Use a single (authoritative) source for common data like terrain data, co-ordinate conversion algorithms, equipment and weapon parameters, etc.;
- Peruse for a standardised C2-Simulation Datamodel, represented in FOM format.

In addition to full compliance with HLA, the innovative architectural concept that was developed supports the key capabilities required for future C2-Simulation interoperability applications:

- An abstraction layer (or TNO-RCI middleware) and a code generator hiding complexities of the underlying interoperability standards and enabling simulation protocol migration with minimal changes to the functional implementation.
- A structured development process (the FEDEP), supported by appropriate tools, enabling migration of legacy simulations and COTS products to the new standard architecture;
- One single standard for all information exchange between systems is a solution that is unlikely to be ever achieved, even if we restrict the ‘universe’ to NATO C4I systems. The Gateway approach is therefore the optimal solution to allow interoperability between the different worlds that C2 and Simulation are today.

The (completion of the) design and the development of the C2WS falls outside the scope of our project. However, we do believe that future C2 systems will include the design requirement for interoperability with Simulations and the results of our project will therefore influence the development direction of the C2WS. The C2WS is on its way to become a useful and exciting new C2 system, reaching out to the useful and exiting new simulation standard HLA.

## 10.0 REFERENCES

- [1] Eddie Lassehuyt, Marcel van Hekken, “Information Interoperability and Information Standardisation for NATO C2 – a practical approach”, IST-2000 Workshop, April 2000.
- [2] Command and Control Workstation (C2WS) ‘Help’-documentation set, RNLA C2 Support Centre, 23 October 2000.
- [3] C3I Architecture: Information Model, RNLA C2 Support Centre, 22 December 2000.
- [4] Defense Modeling and Simulation Office (DMSO), “High Level Architecture for Simulations Interface Specification”. <http://www.dmsomil/public/transition/hla/techspecs>
- [5] Defense Modeling and Simulation Office (DMSO), “High Level Architecture Object Model Template”. <http://www.dmsomil/public/transition/hla/techspecs>

- [6] Defense Modeling and Simulation Office (DMSO), “Federation Development and Execution Process (FEDEP) Model”. <http://www.dmsomil/public/transition/hla/techspecs>
- [7] Marco Brasse, Wim Huiskamp, Olaf Stroosma, “A Component Architecture for Federate Development”, Simulation Interoperability Workshop, Fall 1999.
- [8] Joost Hamers, Leo Breebaart, “Development of the NATO DiMuNDS 2000 Federation – An account of work”.
- [9] Wim Huiskamp, Henk Janssen, Hans Jense, “An HLA based Flight Simulation Architecture”, Proc. AIAA Modeling and Simulation Technologies Conference, Denver, Colorado, USA, August 2000 (AAIA-2000-4401).

### AUTHOR BIOGRAPHIES

**Jeroen Beckers** is a junior scientist at the Command & Control and Simulation Division at TNO-FEL. He holds a M.Sc. degree in Computer Science from the Delft University of Technology and his work concentrates on simulation scenario research and development, distributed simulation and development and visualisation of Virtual Environments.

**Wim Huiskamp** is a research scientist in the Command & Control and Simulation Division at TNO-FEL. He holds a M.Sc. degree in Electrical Engineering from Twente University of Technology, The Netherlands. He works in the field of High Performance Computing and Networking and specialises in design and implementation of distributed computer architectures. His research interests include system architecture, real-time simulation and autonomous vehicle technology. Wim was the project lead for several national and international simulation (and simulation interoperability) projects.

**Oscar Abbenhuis** is a research scientist in the Operations Research and *Business management* division at TNO-FEL. He holds a degree in Micro Electronical Systems Design from the Haagse Hogeschool in The Hague, the Netherlands. He works in the field of software engineering and specialises in design and implementation of software in various languages. His research interests include modelling and simulation, distributed computing and new technologies in the software field.

**Freek-Jan Toevank** is a scientist in the Operations Research and *Business management* division at TNO-FEL. He holds a M.Sc. degree in Econometrics and Operations Research from the University of Groningen, The Netherlands. He works in the fields of operational analysis, decision support and strategic policy development for the RNLA.

*Jeroen Beckers, M.Sc.*

# Simulation Interoperability for the new RNLA C2 WorkStation

TNO Physics and Electronics Laboratory



# Overview

- Linking C2 and Simulation
- Project Objectives
- The RNLA C2 WorkStation
- High Level Architecture
- Concept demonstrator
- Bridging the gap
- TIBCO-HLA Gateway
- Results and conclusions

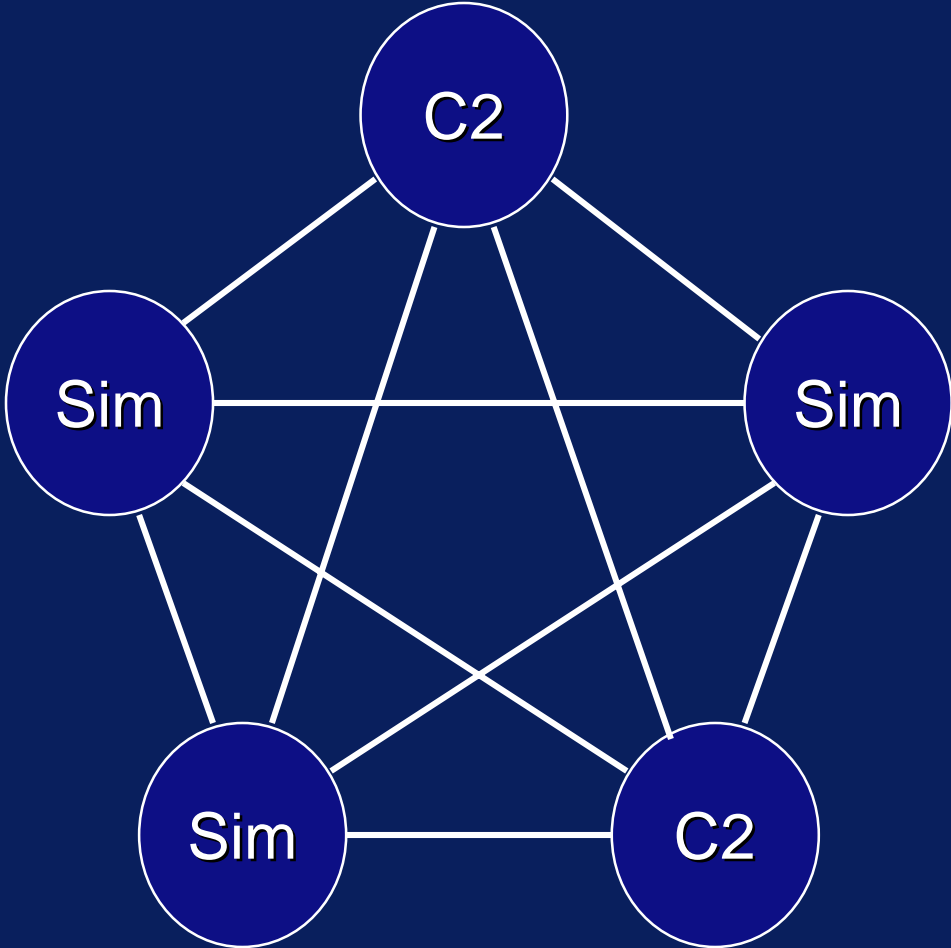
# Linking C2 and Simulation

- Applications
  - Assessment of C2 systems
  - Training and assessment of C2 operators
  - Operational decision support
- Interoperability
  - Systems working together
  - Information interoperability
  - Standardisation

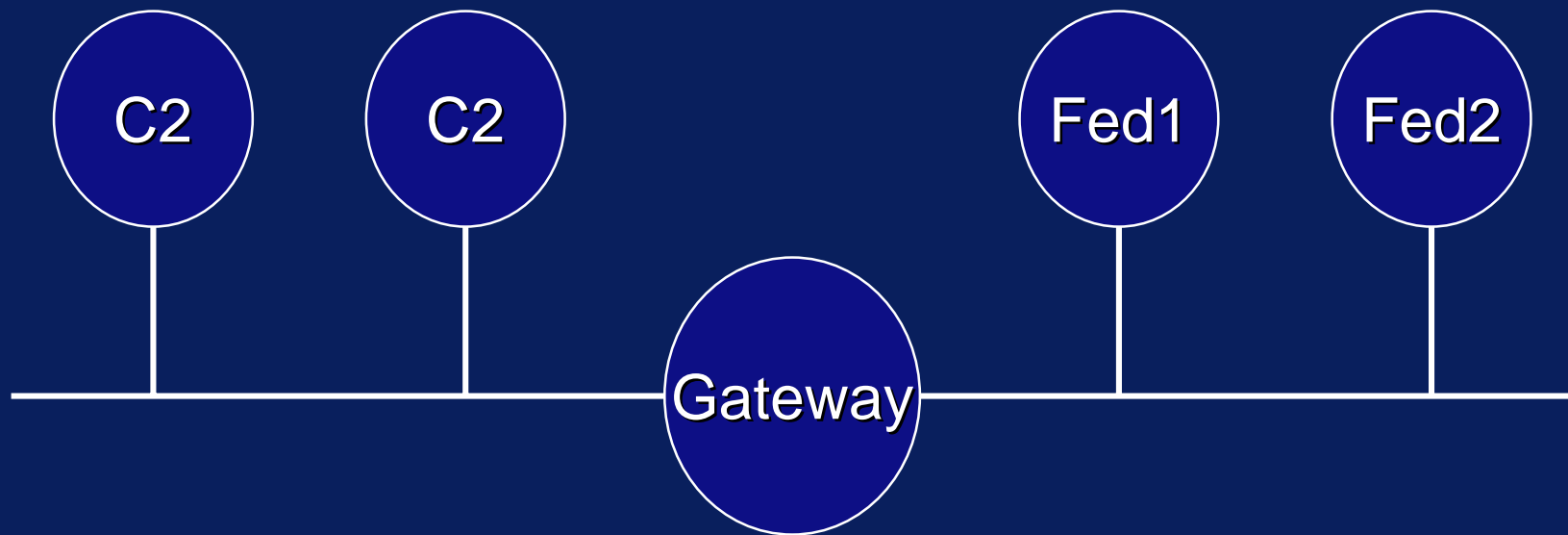
# C2-Simulation Project Objectives

- Interoperability Architecture
  - Staff-level Demonstrator
  - Team-level Demonstrator (BMS)
- Roadmap for future developments

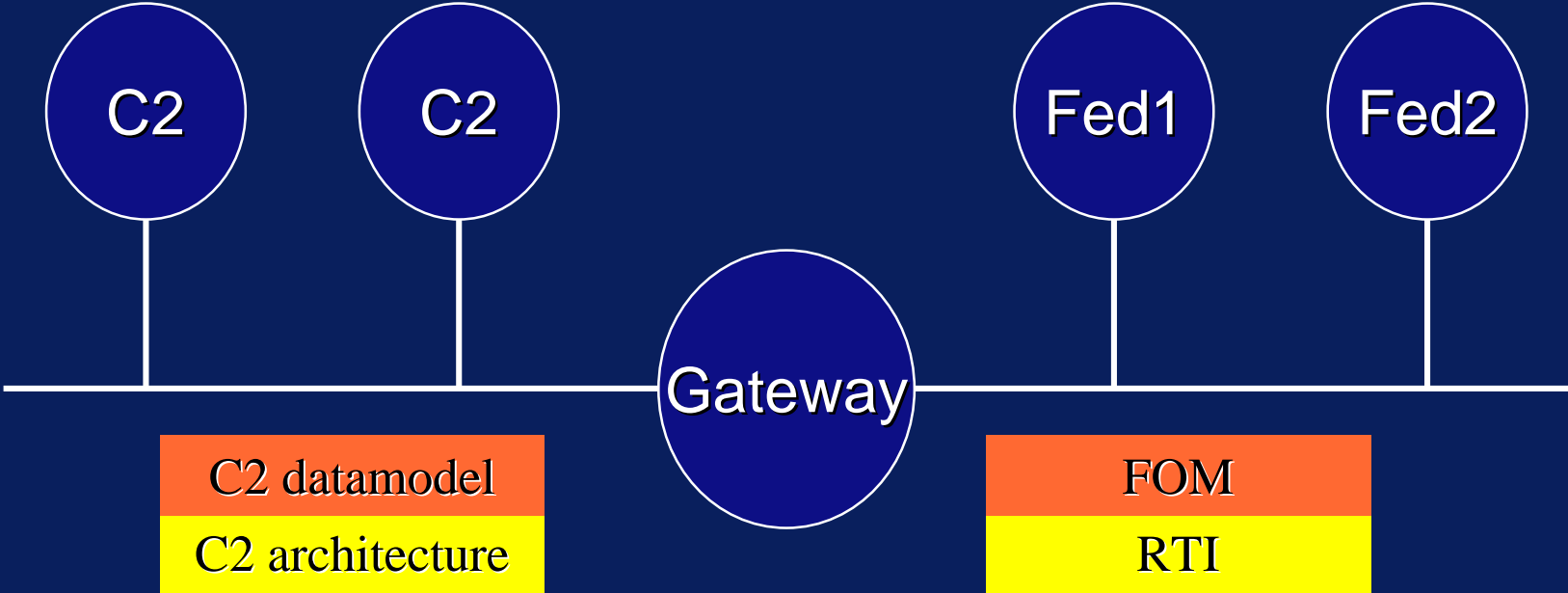
# C2-Sim Interoperability



# C2-Sim Interoperability



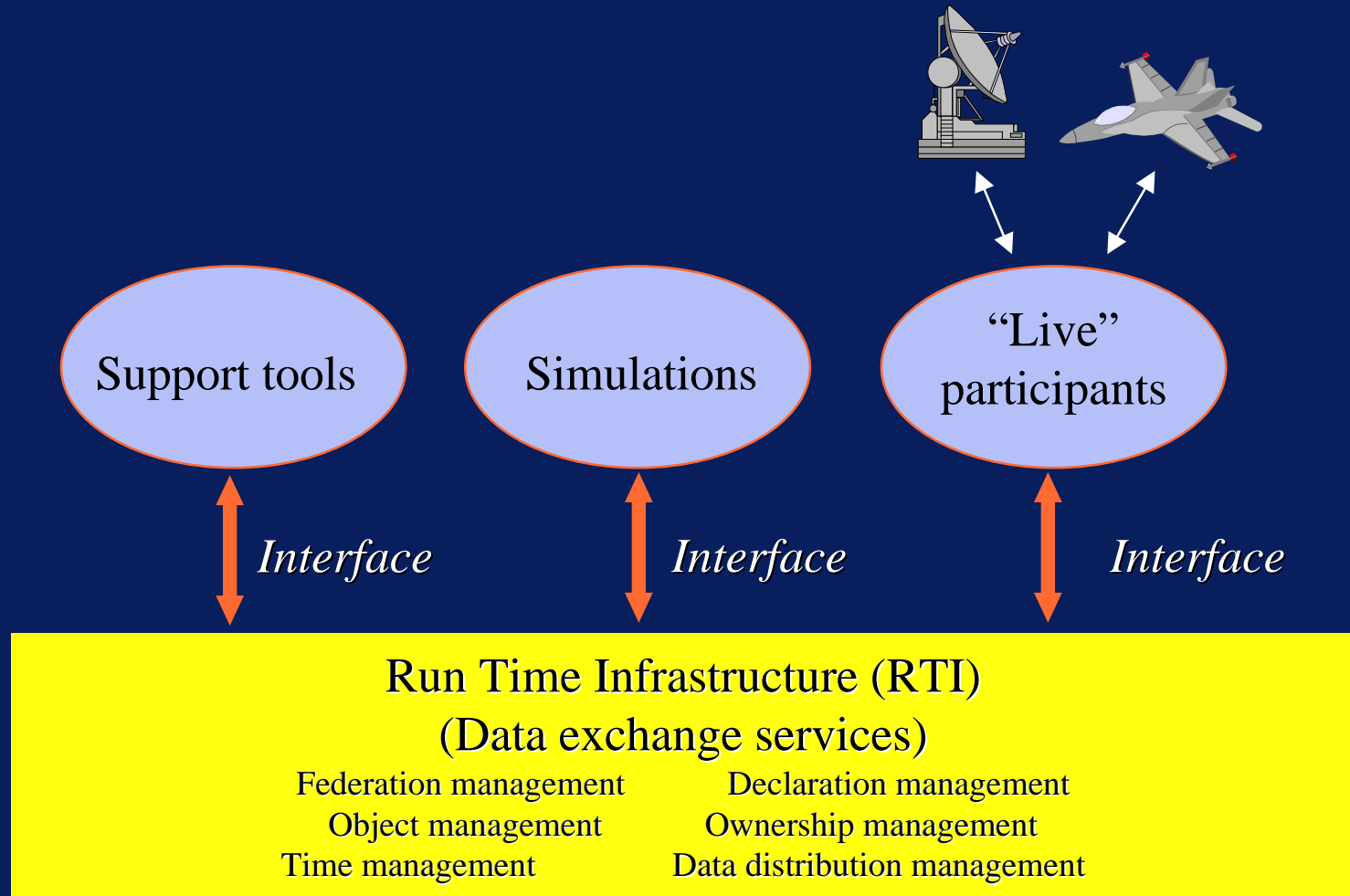
# C2-Sim Interoperability



# High Level Architecture

- Since 1995 promoted by the US DoD
  - NATO M&S masterplan (1998)
  - RNLA M&S policy (2000)
- Simulation Reuse and Interoperability
  - HLA rules
  - Interface specification
  - Federation Object Model
- Run-Time Infrastructure
- Runtime Communication Infrastructure

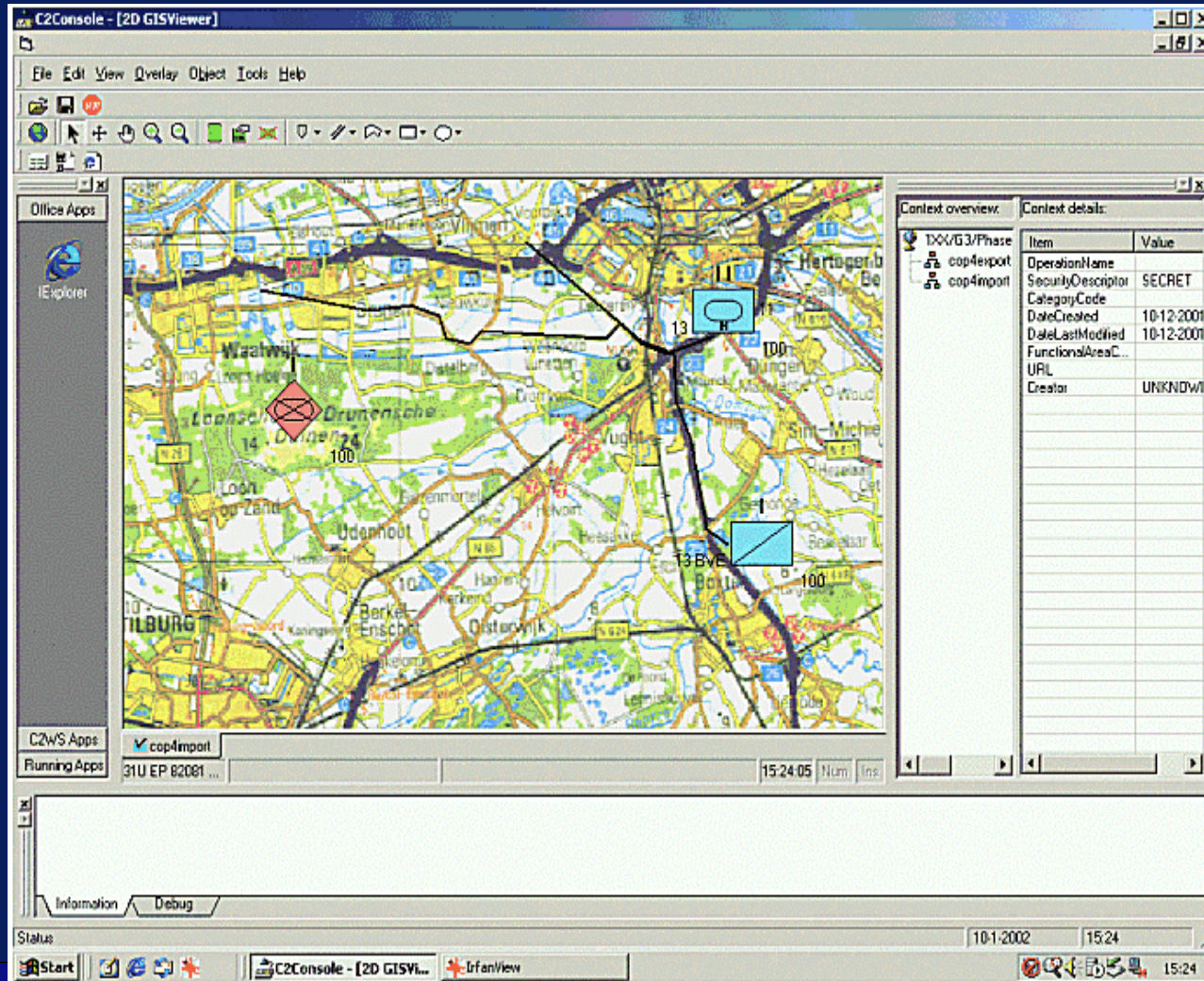
# The High Level Architecture (HLA)



# Staff-level demonstrator

- User requirements (RNLA)
  - Decision support
  - COA analysis
  - Route Planning
  - Personnel reduction at CAX
- Concept Demonstrator
  - Course of action analysis
  - No heavy duty wargame
  - Choice of DSS tool 'Bridge'

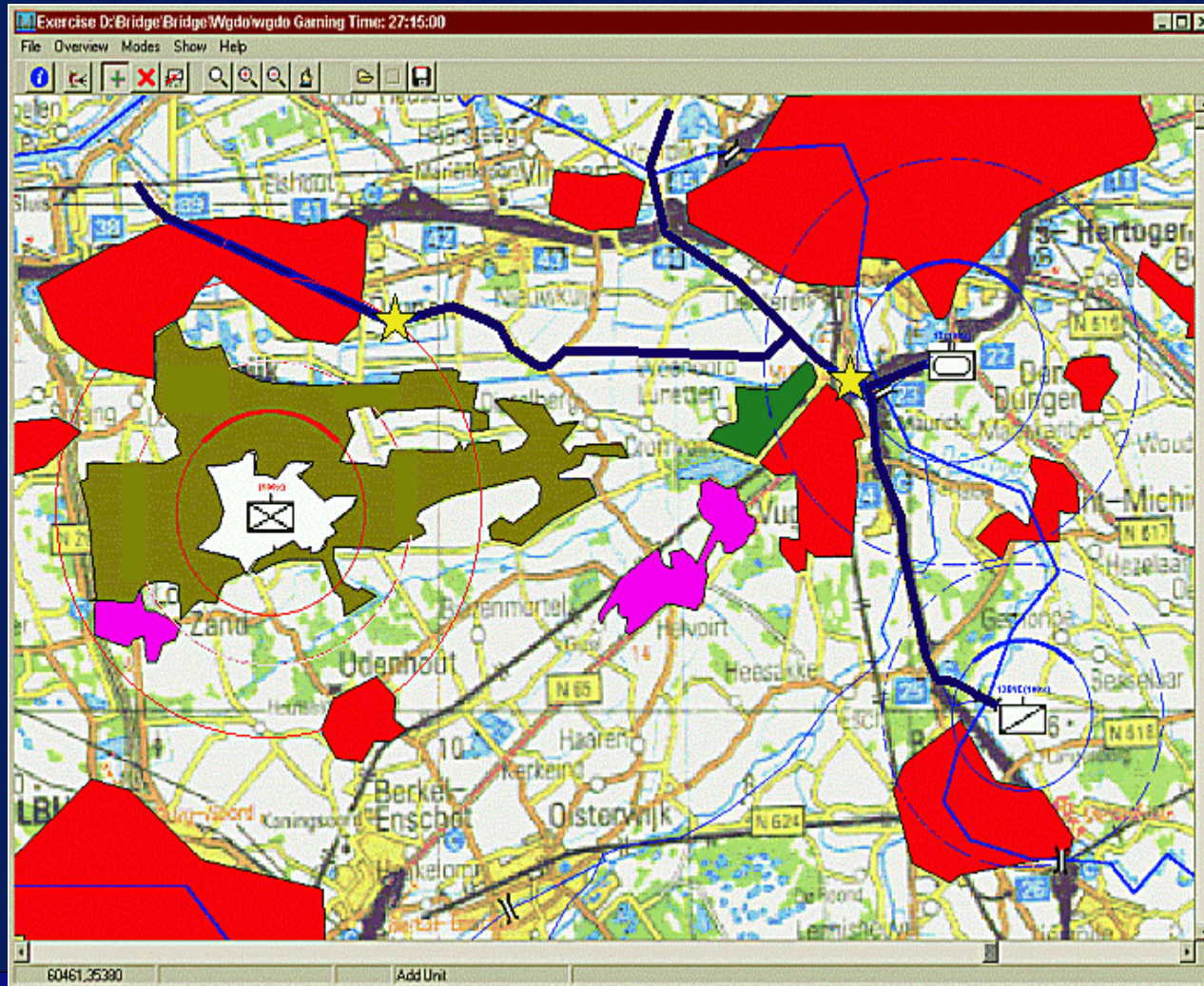
# C2WS (prototype 2001)



# The RNLA C2 WorkStation

- Developed in-house at the RNLA
- Configurable application platform
  - C2 framework
  - C3I architecture
  - C2 XML
- Interoperability through a Commercial Of The Shelf publish/subscribe service (Tibco)

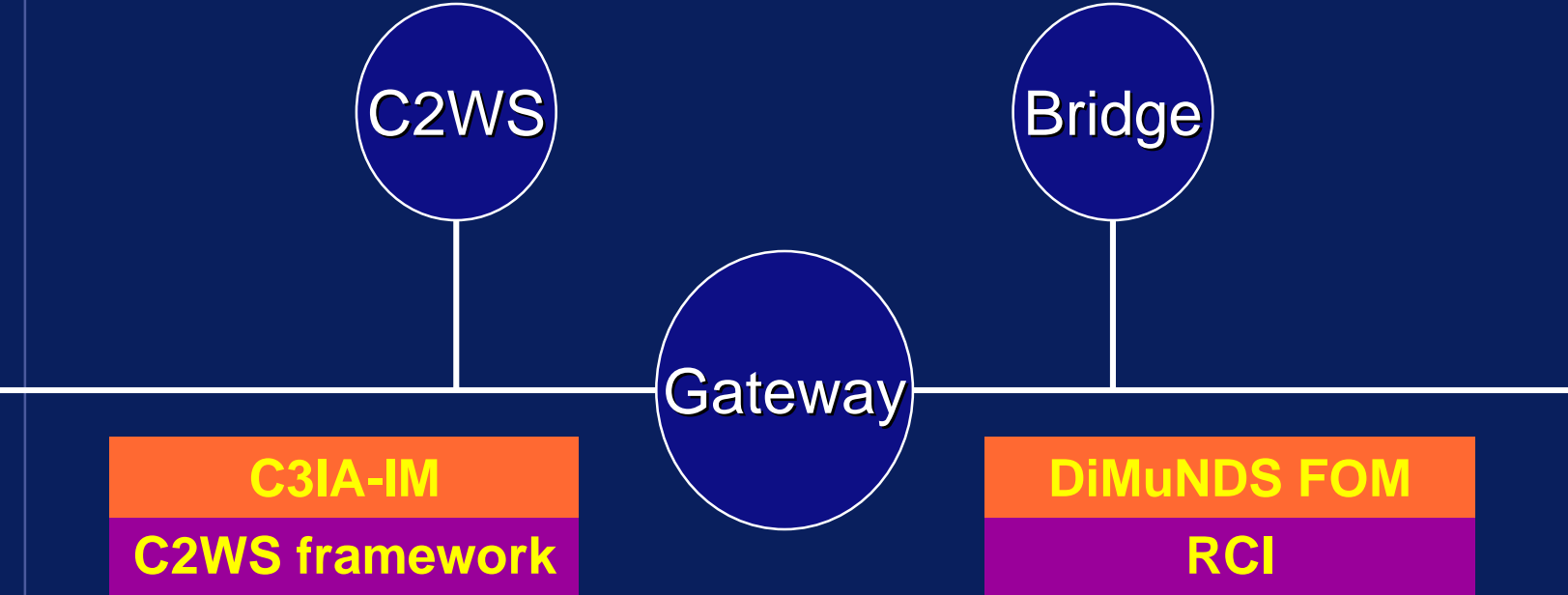
# Bridge (demonstrator DSS tool)



# Bridge

- Bridge constructive combat simulation model
  - In-house TNO-FEL developed as demonstrator
  - Evaluation of orders ( for educational purposes)
  - More easily manageable
- Custom HLA interface developed

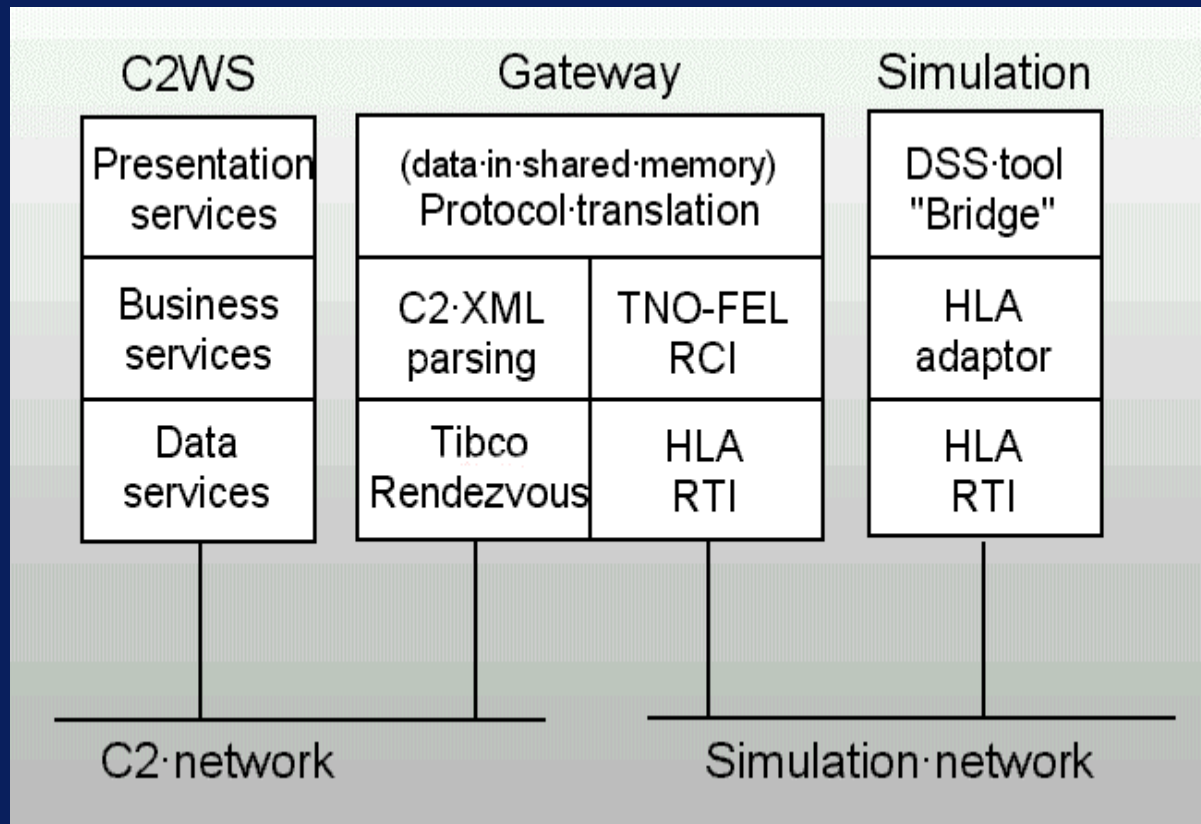
# C2WS-Bridge Federation



## Bridging the gap

- Units and Obstacles import and export
- Mapping of attributes
- Map-exchange and coordinates
- Reuse of components

# C2WS-Bridge Gateway



# Results and conclusions

- Prototype developed for conceptual research
  - Straightforward architecture
  - Useful aid for customer negotiations
- Future plans
  - User feedback
  - Extension of prototype
  - More generic approach
  - Assessment of C2 Workstation
  - Training of C2 Workstation users

## C2 COBP

- Early interacting with the customer, the RNLA, trying to get to the 'REAL question'
- C2-Simulation interoperability needs a Masterplan
  - System Architecture
  - Datamodels

## Contacts

- Jeroen Beckers, M.Sc.      [J.J.Beckers@fel.tno.nl](mailto:J.J.Beckers@fel.tno.nl)
- Wim Huiskamp, M.Sc.      [Huiskamp@fel.tno.nl](mailto:Huiskamp@fel.tno.nl)
- Hans Jense, Ph.D.      [Jense@fel.tno.nl](mailto:Jense@fel.tno.nl)
- Freek-Jan Toevank, M.Sc.      [Toevank@fel.tno.nl](mailto:Toevank@fel.tno.nl)

TNO Physics and Electronics Laboratory  
Oude Waalsdorperweg 63  
P.O. box 96864  
2509 JG The Hague  
The Netherlands